

Submit to Appropriate
District Office
State Lease - 4 copies
Fee Lease - 3 copies

State of New Mexico
Energy, Minerals and Natural Resources Department

Form C-102
Revised 1-1-89

OIL CONSERVATION DIVISION

DISTRICT I
P.O. Box 1980, Hobbs, NM 88240

P.O. Box 2088

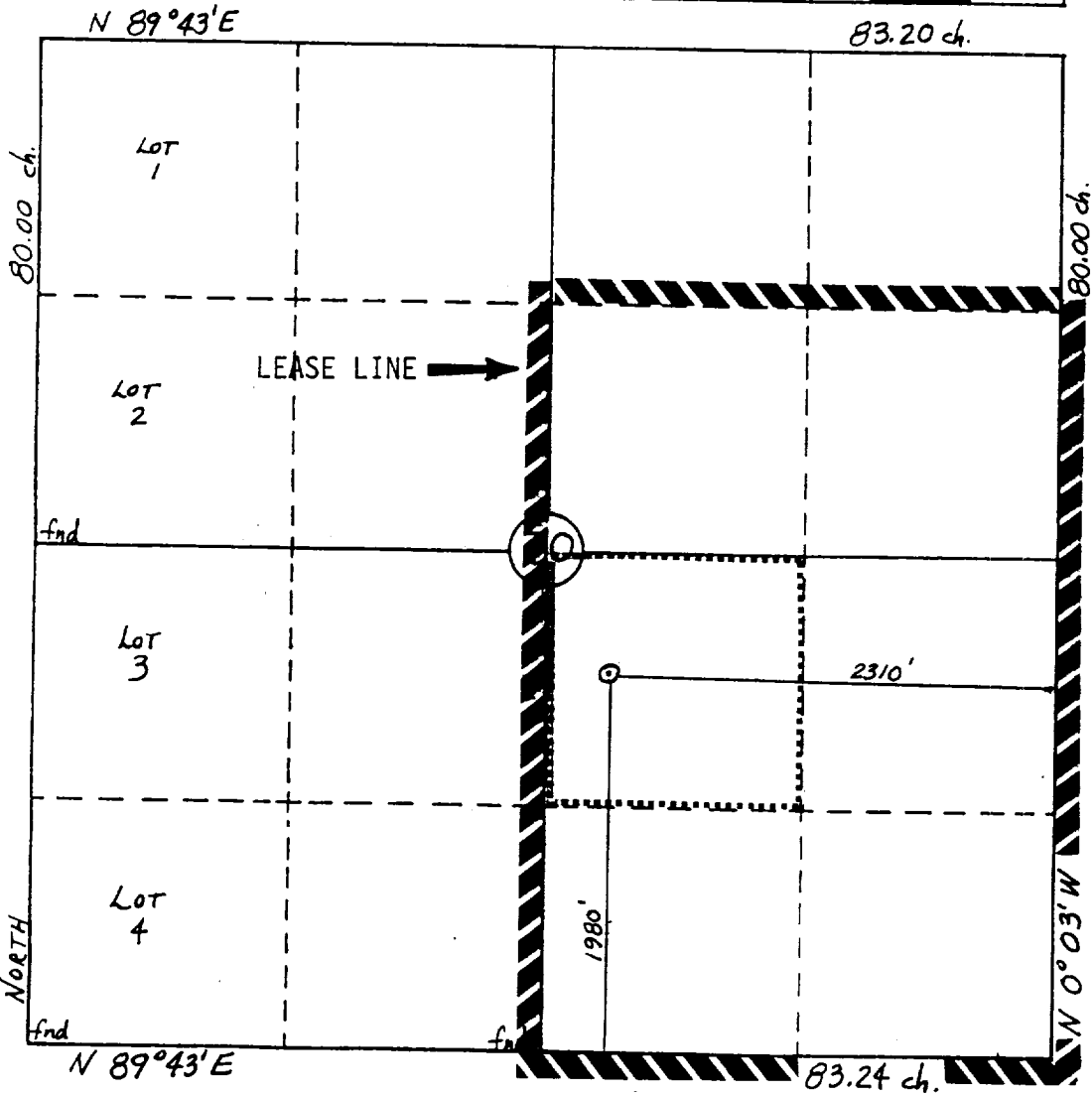
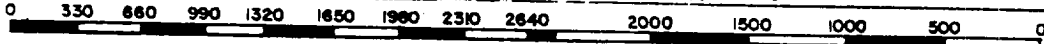
Santa Fe, New Mexico 87504-2088

DISTRICT II
P.O. Drawer DD, Artesia, NM 88210

DISTRICT III
1000 Rio Brazos Rd., Aztec, NM 87410

WELL LOCATION AND ACREAGE DEDICATION PLAT
All Distances must be from the outer boundaries of the section

Operator MERIDIAN OIL INC.		Lease LITTLE JACK "30" FEDERAL		Well No. 1
Unit Letter J	Section 30	Township 23 SOUTH	Range 32 EAST	County LEA
Actual Footage Location of Well: 1980 feet from the SOUTH line and 2310 feet from the EAST line				
Ground level Elev. 3605	Producing Formation BONE SPRING OR DELAWARE		Pool WILDCAT	Dedicated Acreage: 40 Acres
<p>1. Outline the acreage dedicated to the subject well by colored pencil or hachure marks on the plat below.</p> <p>2. If more than one lease is dedicated to the well, outline each and identify the ownership thereof (both as to working interest and royalty).</p> <p>3. If more than one lease of different ownership is dedicated to the well, have the interest of all owners been consolidated by communitization, unitization, force-pooling, etc.? <input type="checkbox"/> Yes <input type="checkbox"/> No If answer is "yes" type of consolidation _____</p> <p>If answer is "no" list the owners and tract descriptions which have actually been consolidated. (Use reverse side of this form if necessary.) _____</p> <p>No allowable will be assigned to the well until all interests have been consolidated (by communitization, unitization, forced-pooling, or otherwise) or until a non-standard unit, eliminating such interest, has been approved by the Division.</p>				



OPERATOR CERTIFICATION
I hereby certify that the information contained herein is true and complete to the best of my knowledge and belief.

Signature: *Maria L. Perez*
Printed Name: **MARIA L. PEREZ**
Position: **PRODUCTION ASST.**
Company: **MERIDIAN OIL INC.**
Date: **7-1-93**

SURVEYOR CERTIFICATION
I hereby certify that the well location shown on this plat was plotted from field notes of actual surveys made by me or under my supervision, and that the same is true and correct to the best of my knowledge and belief.
Date Surveyed: **6-13-93**
WILLIAM E. MAHNKE II
Signature & Seal: *William E. Mahnke II*
Professional Surveyor
Certificate No. **9466**