

COUNTY	LEA	FIELD	E1 Mar	OWWO
OPR	KERN COUNTY LAND CO.		STATE	NM MN 08317
	4 State "36"		MAP	
	Sec 36, T-26-S, R-32-E		CO-ORD	
	542' FSL, 330' FWL of Sec			
	Re-Spd 6-6-70			
	Re-Cmp 7-16-70		CLASS	OWDF EL 2
LOGS & SX - TUBING	FORMATION	DATUM	FORMATION	DATUM
8 5/8" at 335' w/150 SX				
4 1/2" at 4707' w/150 SX.				
LOGS EL GR RA IND HC A				
	TD 4707'; PBD 4683'			
(Delaware Sand) Perfs 4568-4623' NO NEW POTENTIAL.				

Distribution limited and publication prohibited by subscribers' agreement.
 Reproduction rights reserved by Williams & Lee Scouting Service, Inc.

CONT. DATE PROP DEPTH 4623' TYPE WO

8-11-70 F.R.C. 8-13-70; Opr's Elev. 3097' GL
 PD 4623' WO (Delaware Sand)
 (Orig. Hill & Meeker #4 State "36", comp
 8-10-59 thru Perfs 4589-95', OTD 4707',
 OPB 4683'; OWWO & Re-Cmp by Kern County Land
 Co. on 9-24-63 thru Perfs 4568-95', OPB 4683')
 TD 4707'; PBD 4683'; COMPLETE
 Perf 4603-23'
 Acid (4568-4623') 750 gals
 Frac (4568-4623') 15,000 gals oil +
 17,500# sd
 3-13-70 Ppd 19 BNO + 22 BW in 24 hrs (4568-4623')
 COMPLETION REPORTED

COUNTY	Lea	FIELD	El Mar-Delaware	STATE	N.M.	NO.	OWWO
OPR.	Kern County Land Company						
NO.	4	LSE	State	"36"	MAP		
SEC.	36	T.	26S	BLK.	32E	SUR	
LOC.				542' fr S Line & 330' fr W Line of Sec.			
Re-	MI.	FROM	Re-	CLASS.	OWWO EL. 31012		
SPUD.	9-23-63	COMP.	9-24-63	FORMATION	DATUM	FORMATION	
TRT.							
CSG. & SX.							
	8 5/8"	348'	150				
	4 1/2"	4711'	250				
TBG.	DEPTH	SIZE					
LOGS	EL	GR	RA	IND	HC	A	
				TD	4711'	PB	4680'
PROD INT.	(DAILY RATE)	BS&W	GH	GOR	GTY	C. P.	T. P.
4568-95'	Flwd 55 BO + 3 BW	?		161.8			
(Delaware)							24
Distribution limited and publication prohibited by subscribers' agreement. Reproduction rights reserved by Williams & Lee Scouting Service, Inc.							
CONT.	PROP			DEPTH	TYPE		
DATE							

10-21-63 F.R.C. 10-24-63, OWWO, OTD 4711'
 TD 4711', PB 4680', COMPLETED.
 Perf 4568-88' W/2 SPF
 Frac 2000 gals oil + 2000# sd.
 (Formerly Hill & Meeker)

NEW MEXICO OIL CONSERVATION COMMISSION
WELL LOCATION AND ACREAGE DEDICATION PLAT

FORM C-128
Revised 5/1/57

SEE INSTRUCTIONS FOR COMPLETING THIS FORM ON THE REVERSE SIDE

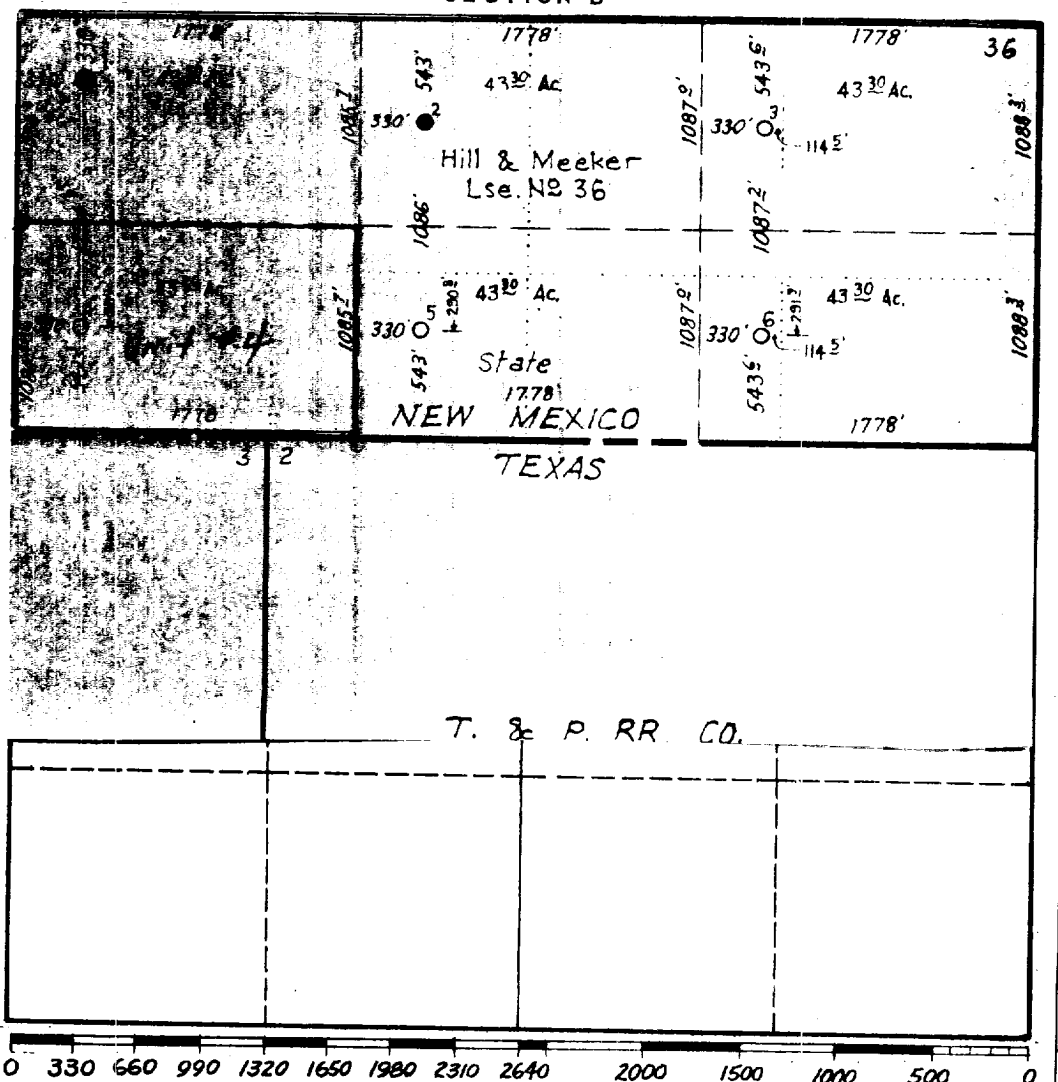
SECTION A

Operator Hill & Meeker		Lease State 36		Well No. 4
Unit Letter non std.	Section 36	Township 26S	Range 32E	County Lea
Actual Footage Location of Well: 330 feet from the West line and 542.3' feet from the South line Sec. 36				
Ground Level Elev. 3093	Producing Formation Delaware Sand	Pool Undesignated	Dedicated Acreage: 43.3 Acres	

1. Is the Operator the only owner in the dedicated acreage outlined on the plat below? YES ☒ NO ____ . ("Owner" means the person who has the right to drill into and to produce from any pool and to appropriate the production either for himself or for himself and another. (65-3-29 (e) NMSA 1935 Comp.)
2. If the answer to question one is "no," have the interests of all the owners been consolidated by communitization agreement or otherwise? YES ____ NO ____ . If answer is "yes," Type of Consolidation _____
3. If the answer to question two is "no," list all the owners and their respective interests below:

Owner	Land Description

SECTION B



CERTIFICATION

I hereby certify that the information in SECTION A above is true and complete to the best of my knowledge and belief.

Name	H. D. Manning
Position	Production Clerk
Company	Hill & Meeker
Date	July 7, 1959

I hereby certify that the well location shown on the plat in SECTION B was plotted from field notes of actual surveys made by me or under my supervision, and that the same is true and correct to the best of my knowledge and belief.

Date Surveyed	July 7, 1959
Registered Professional Engineer and/or Land Surveyor	[Signature]

Certificate No. _____

INSTRUCTIONS FOR COMPLETION OF FORM C-128

1. Operator shall furnish and certify to the information called for in Section A.
2. Operator shall outline the dedicated acreage for *both* oil and gas wells on the plat in Section B.
3. A registered professional engineer or land surveyor registered in the State of New Mexico or approved by the Commission shall show on the plat the location of the well and certify this information in the space provided.
4. All distances shown on the plat must be from the outer boundaries of the Section.
5. If additional space is needed for listing owners and their respective interests as required in question 3 of Section A, please use space below.