

# OIL CONSERVATION DIVISION

P.O. Box 2088  
Santa Fe, New Mexico 87504-2088

## DISTRICTU

P.O. Box 1980, Hobbs, NM 88240

## DISTRICT II

P.O. Drawer DD, Artesia, NM 88210

### DISTRICT III

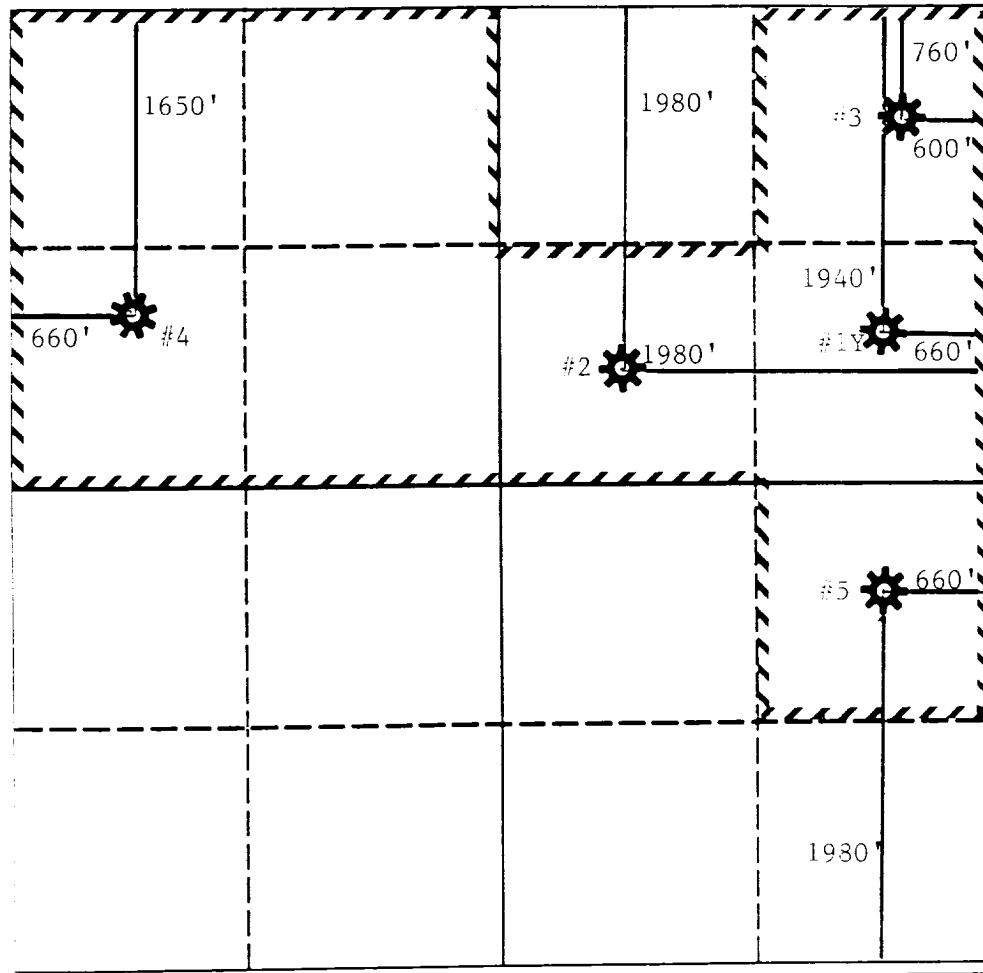
1000 Rio Brazos Rd., Aztec, NM 87410

# WELL LOCATION AND ACREAGE DEDICATION PLAT

All Distances must be from the outer boundaries of the section

Operator			Lease		Well No.	
ARCO OIL AND GAS COMPANY			JOHN P. COMBEST WN		#3	
Unit Letter	Section	Township	Range	County		
A	35	T-23S	R-36E	NMPM		LEA
Actual Footage Location of Well:						
760'	feet from the	NORTH	line and	600	feet from the	EAST line
Ground level Elev.	Producing Formation		Pool	Dedicated Acreage:		
3326'	TANSILL/YATES/7-RIVERS		JALMAT	320 Acres		

1. Outline the acreage dedicated to the subject well by colored pencil or hatchure marks on the plat below.
2. If more than one lease is dedicated to the well, outline each and identify the ownership thereof (both as to working interest and royalty).
3. If more than one lease of different ownership is dedicated to the well, have the interest of all owners been consolidated by communitization, unitization, force-pooling, etc.?
- ☐ Yes      ☐ No      If answer is "yes" type of consolidation \_\_\_\_\_
- If answer is "no" list the owners and tract descriptions which have actually been consolidated. (Use reverse side of this form if necessary.) \_\_\_\_\_
- No allowable will be assigned to the well until all interests have been consolidated (by communitization, unitization, forced-pooling, or otherwise) or until a non-standard unit, eliminating such interest, has been approved by the Division.



T-23S

## OPERATOR CERTIFICATION

I hereby certify that the information contained herein is true and complete to the best of my knowledge and belief.

Signature \_\_\_\_\_

Everett E. Hilson

Printed Name \_\_\_\_\_

E. E. GILSON

Position

ENGINEERING TECHNICIAN

Сотруднику

ARCO OIL AND GAS COMPANY

Date \_\_\_\_\_

JUNE 1, 1993

### SURVEYOR CERTIFICATION

I hereby certify that the well location shown on this plat was plotted from field notes of actual surveys made by me or under my supervision, and that the same is true and correct to the best of my knowledge and belief.

Date Surveyed \_\_\_\_\_

Signature & Seal of  
Professional Surveyor

Certificate No.

0	330	660	990	1320	1650	1980	2310	2640	2000	1500	1000	500
---	-----	-----	-----	------	------	------	------	------	------	------	------	-----

R-36E

NEW MEXICO OIL CONSERVATION COMMISSION  
WELL LOCATION AND ACREAGE DEDICATION PLAT

Form C-102  
Supersedes C-128  
Effective 1-1-65

All distances must be from the outer boundaries of the Section.

Operator <b>Atlantic Richfield Company</b>			Lease <b>John P. Combest</b>		Well No. <b>3</b>
Unit Letter <b>A</b>	Section <b>35</b>	Township <b>23 South</b>	Range <b>• 36 East</b>	County <b>Lea</b>	
Actual Footage Location of Well: <b>760</b> feet from the <b>North</b> line and <b>600</b> feet from the <b>East</b> line					
Ground Level Elev. <b>3334'</b>	Producing Formation <b>Yates - Seven Rivers</b>		Pool <b>Jalmat Gas</b>		Dedicated Acreage: <b>320</b> Acres

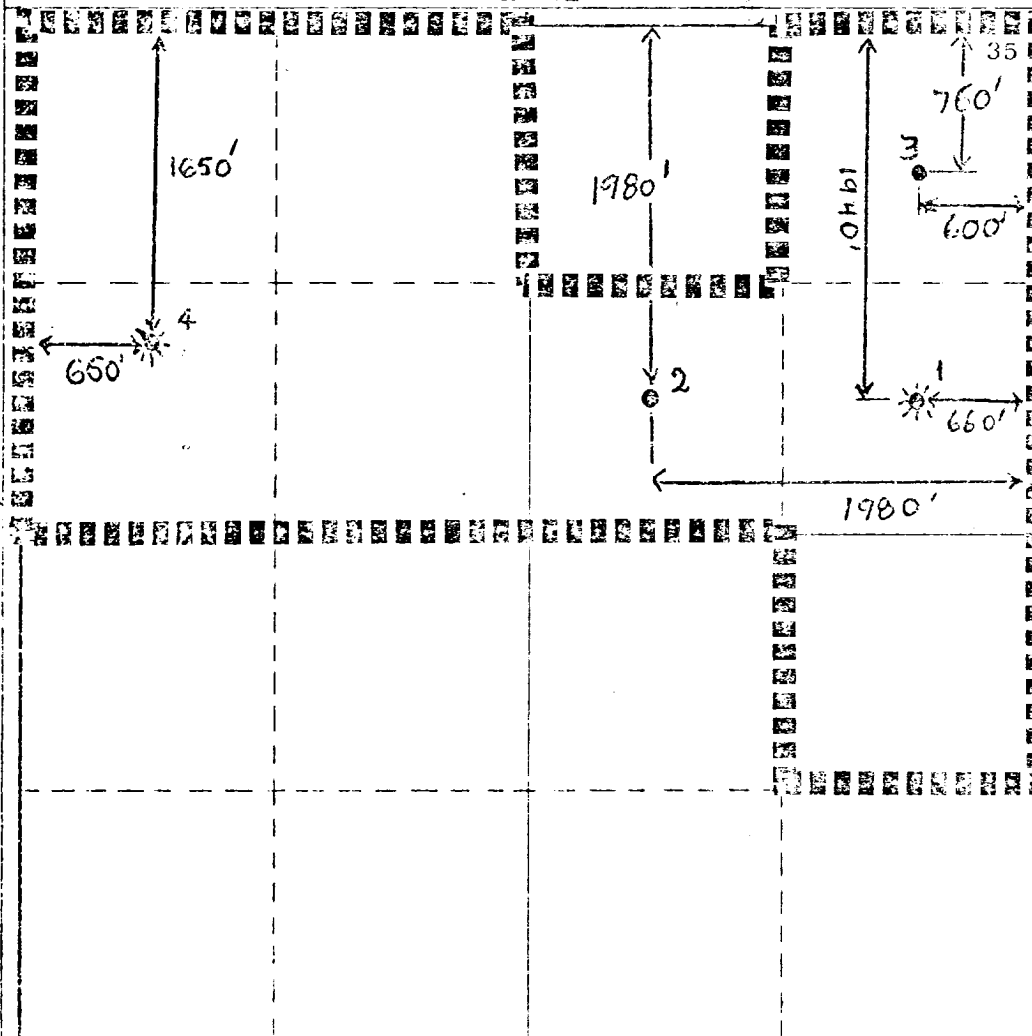
1. Outline the acreage dedicated to the subject well by colored pencil or hatchure marks on the plat below.
2. If more than one lease is dedicated to the well, outline each and identify the ownership thereof (both as to working interest and royalty).
3. If more than one lease of different ownership is dedicated to the well, have the interests of all owners been consolidated by communitization, unitization, force-pooling, etc?

☐ Yes ☐ No If answer is "yes," type of consolidation \_\_\_\_\_

If answer is "no," list the owners and tract descriptions which have actually been consolidated. (Use reverse side of this form if necessary.) \_\_\_\_\_

No allowable will be assigned to the well until all interests have been consolidated (by communitization, unitization, forced-pooling, or otherwise) or until a non-standard unit, eliminating such interests, has been approved by the Commission.

R-36E



CERTIFICATION

I hereby certify that the information contained herein is true and complete to the best of my knowledge and belief.

*Huan Quoc Pham*

Name

Huan Quoc Pham

Position

Operation Engineer

Company

Atlantic Richfield Co.

Date

August 3, 1976

I hereby certify that the well location shown on this plat was plotted from field notes of actual surveys made by me or under my supervision, and that the same is true and correct to the best of my knowledge and belief.

Date Surveyed

Registered Professional Engineer  
and/or Land Surveyor

Certificate No.