

Submit to Appropriate
District Office
State Lease - 4 copies
Fee Lease - 3 copies

State of New Mexico
Energy, Minerals and Natural Resources Department

Form C-102
Revised 1-1-89

OIL CONSERVATION DIVISION
P.O. Box 2088
Santa Fe, New Mexico 87504-2088

DISTRICT I
P.O. Box 1980, Hobbs, NM 88240

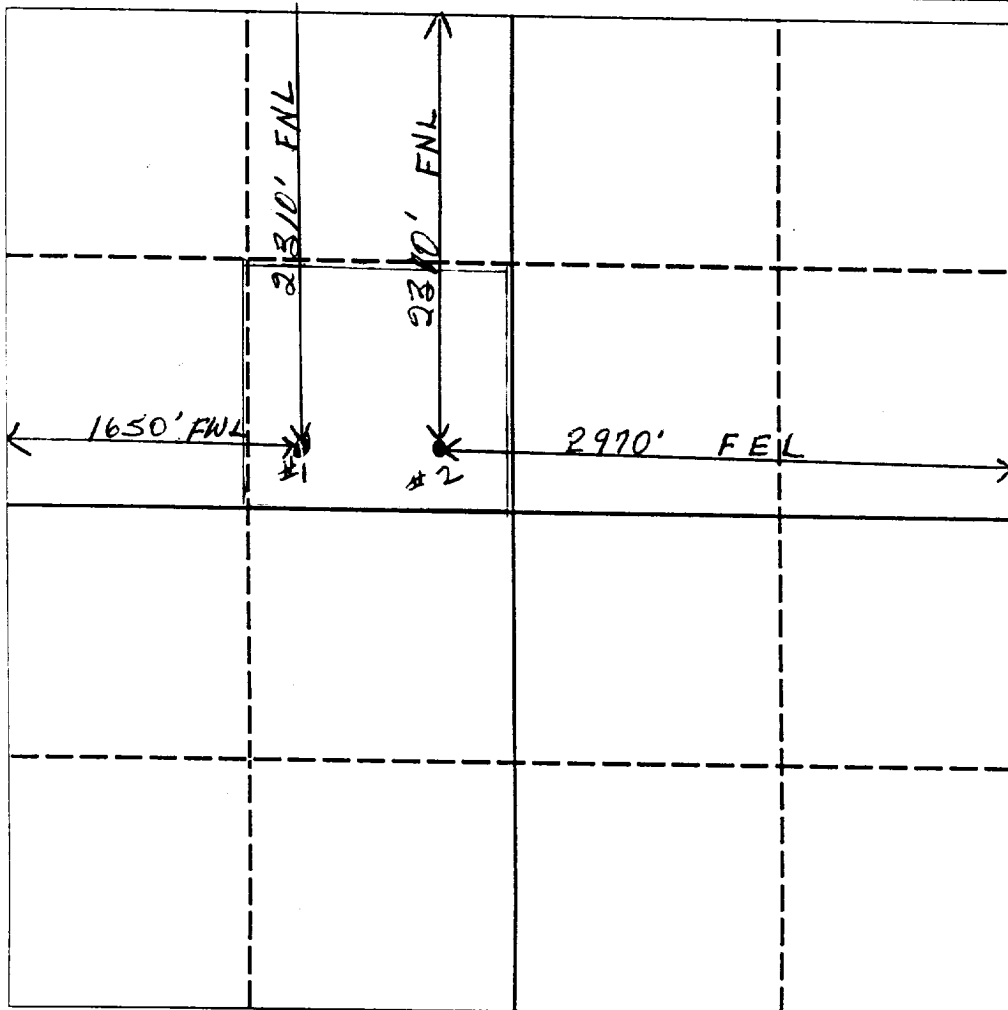
DISTRICT II
P.O. Drawer DD, Artesia, NM 88210

DISTRICT III
1000 Rio Brazos Rd., Aztec, NM 87410

WELL LOCATION AND ACREAGE DEDICATION PLAT
All Distances must be from the outer boundaries of the section

Operator Westbrook Oil Corporation			Lease Zattu Cushing Federal		Well No. 1
Unit Letter F	Section 23	Township 24S	Range 36E	County Lea	
Actual Footage Location of Well: 2310 feet from the North line and 1650 feet from the West line					
Ground level Elev.	Producing Formation Tansill Yates 7-Rivers		Pool Jalmat	Dedicated Acreage: 40 Acres	

1. Outline the acreage dedicated to the subject well by colored pencil or hachure marks on the plat below.
2. If more than one lease is dedicated to the well, outline each and identify the ownership thereof (both as to working interest and royalty).
3. If more than one lease of different ownership is dedicated to the well, have the interest of all owners been consolidated by communitization, unitization, force-pooling, etc.?
☐ Yes ☐ No If answer is "yes" type of consolidation _____
If answer is "no" list the owners and tract descriptions which have actually been consolidated. (Use reverse side of this form if necessary).
No allowable will be assigned to the well until all interests have been consolidated (by communitization, unitization, forced-pooling, or otherwise) or until a non-standard unit, eliminating such interest, has been approved by the Division.



OPERATOR CERTIFICATION

I hereby certify that the information contained herein is true and complete to the best of my knowledge and belief.

Signature *V. H. Westbrook*
Printed Name V. H. Westbrook
Position Vice-President
Company Westbrook Oil Corporation
Date 10/20/94

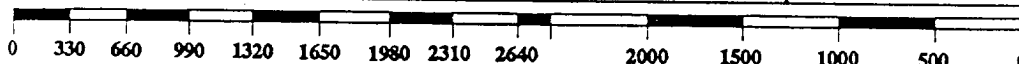
SURVEYOR CERTIFICATION

I hereby certify that the well location shown on this plat was plotted from field notes of actual surveys made by me or under my supervision, and that the same is true and correct to the best of my knowledge and belief.

Date Surveyed

Signature & Seal of
Professional Surveyor

Certificate No.



**NEW MEXICO OIL CONSERVATION COMMISSION
WELL LOCATION AND ACREAGE DEDICATION PLAT**

Form C
Supersedes C-128
Effective 1-1-65

All distances must be from the outer boundaries of the Section

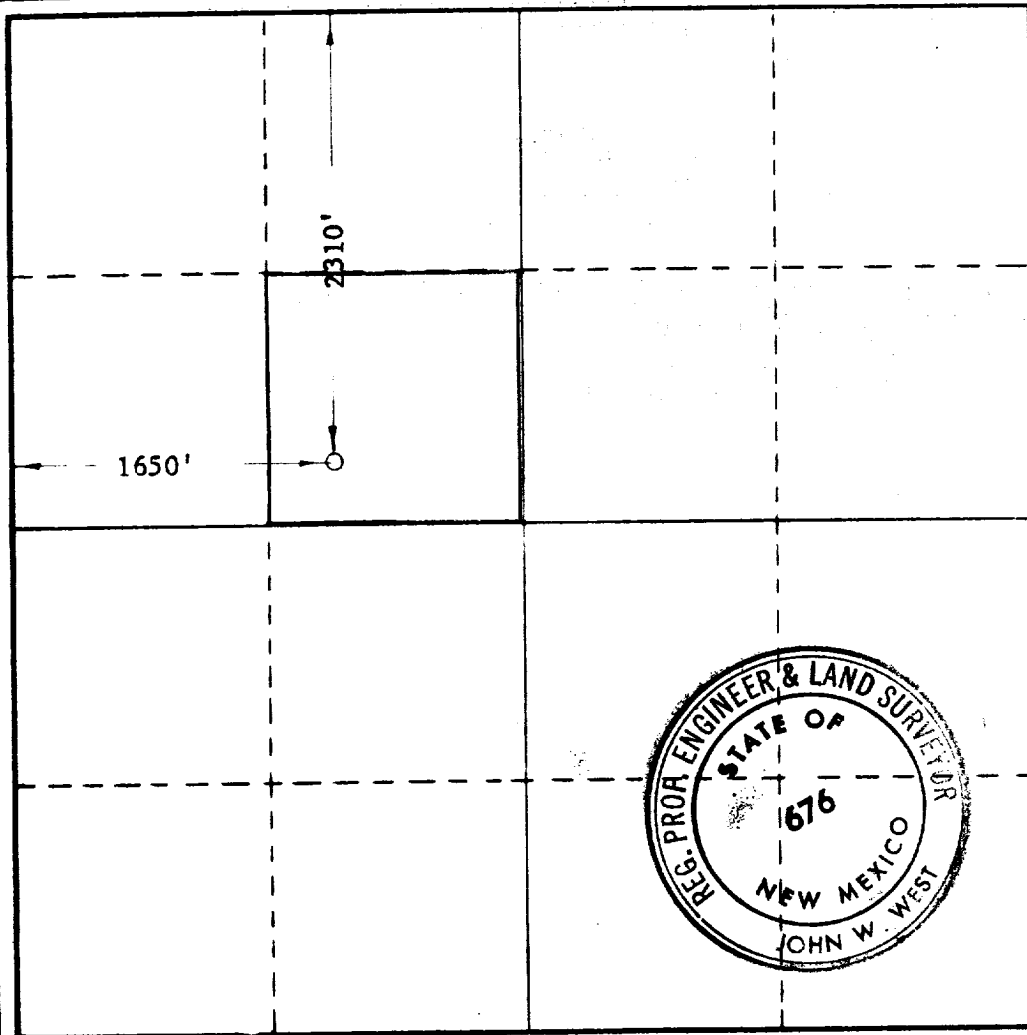
Operator SAM D. ARES			Lease ZATTU CUSHING		Well No. 1
Unit Letter F	Section 23	Township 24 SOUTH	Range 36 EAST	County LEA	
Actual Footage Location of Well: <div style="display: flex; justify-content: space-between;"> 2310 feet from the NORTH line and 1650 feet from the WEST line </div>					
Ground Level Elev.	Producing Formation Yates	Pool Jalnet	Dedicated Acreage: 40 Acres		

1. Outline the acreage dedicated to the subject well by colored pencil or hachure marks on the plat below.
2. If more than one lease is dedicated to the well, outline each and identify the ownership thereof (both as to working interest and royalty).
3. If more than one lease of different ownership is dedicated to the well, have the interests of all owners been consolidated by communitization, unitization, force-pooling, etc?

☐ Yes ☐ No If answer is "yes," type of consolidation _____

If answer is "no," list the owners and tract descriptions which have actually been consolidated. (Use reverse side of this form if necessary.) _____

No allowable will be assigned to the well until all interests have been consolidated (by communitization, unitization, forced-pooling, or otherwise) or until a non-standard unit, eliminating such interests, has been approved by the Commission.



CERTIFICATION

I hereby certify that the information contained herein is true and complete to the best of my knowledge and belief.

Name
Donna Walker
Position
Agent

Company
Sam D. Ares

Date
7/13/73

I hereby certify that the well location shown on this plat was plotted from field notes of actual surveys made by me or under my supervision, and that the same is true and correct to the best of my knowledge and belief.

Date Surveyed
JULY 11, 1973

Registered Professional Engineer and/or Land Surveyor

John W. West
Certificate No. **676**

120 660 100 1320 1650 1980 2310 2640 2000 1800 1000 800

COUNTY	IEA	FIELD	Jalmat	STATE	NM	OWWO
OPR	ARES, SAM D.					MAP
	1 Cushing, Zattu					
	Sec. 23, T-24-S, R-36-E					CO-ORD
	2310' fr N Line & 1660' fr W Line of Sec.					
		CLASS			EL	
Re-Cmp	9-9-65	FORMATION	DATUM	FORMATION	DATUM	
CSG & SX - TUBING						
10"	1267'					
8 1/4"	2825'					
6 5/8"	3465'					
LOGS EL GR RA IND HC A						
		TD 3505', PBD 3440'				

IP Seven Rivers Perfs 3210-14' Pmpd 33 BOPD + 215 BW. Pot.
Based on 24 hr test, gas volume 500 MCFGPD.

Distribution limited and publication prohibited by subscribers' agreement.
Reproduction rights reserved by Williams & Lee Scouting Service, Inc.

CONT.	PROP DEPTH	TYPE
DATE		

11-8-65 F.R.C. 11-11-65; OWWO
(Orig. Socony Mobil Oil Co., Inc., #1 Zattu
Cushing Permit, comp from OH 3465-3505' in
Langlie-Mattix field, OTD 3505')
TD 3505', PBD 3440', COMPLETED.
Set CIBP @ 3440' to shut off OH 3465-3505'
Perf 3210-16' W/1 SPF
Ac. 500 gals.
Swbd 100% wtr.
Squeezed perfs 3210-16' W/600 sx. (3 stages)
Re-Perf 3210-14' W/1 SPF.