

NEW MEXICO OIL CONSERVATION COMMISSION
 WELL LOCATION AND ACREAGE DEDICATION PLAT

HOBBS OFFICE
 JUN 4 10 48 AM '69
 Form C-102
 Supersedes C-128
 Effective 1-1-65

All distances must be from the outer boundaries of the Section.

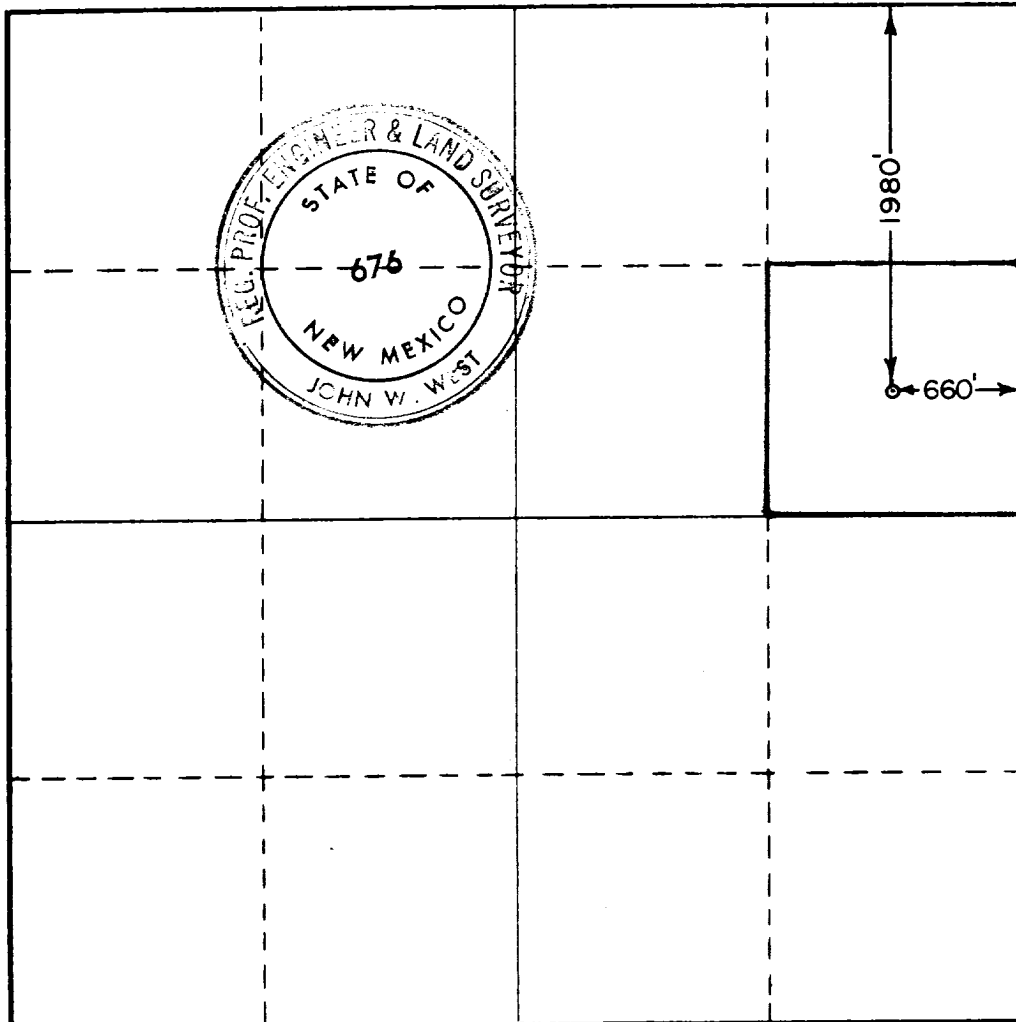
Operator SOLAR OIL COMPANY		Lease FLAT C SHARP			Well No. 1
Unit Letter H	Section 11	Township 23 SOUTH	Range 37 EAST	County LEA	
Actual Footage Location of Well: 1980 feet from the NORTH line and 660 feet from the EAST line					
Ground Level Elev.	Producing Formation ABO	Pool UN-DESIGNATED	Dedicated Acreage: 40 Acres		

1. Outline the acreage dedicated to the subject well by colored pencil or hachure marks on the plat below.
2. If more than one lease is dedicated to the well, outline each and identify the ownership thereof (both as to working interest and royalty).
3. If more than one lease of different ownership is dedicated to the well, have the interests of all owners been consolidated by communitization, unitization, force-pooling, etc?

Yes No If answer is "yes," type of consolidation _____

If answer is "no," list the owners and tract descriptions which have actually been consolidated. (Use reverse side of this form if necessary.) _____

No allowable will be assigned to the well until all interests have been consolidated (by communitization, unitization, forced-pooling, or otherwise) or until a non-standard unit, eliminating such interests, has been approved by the Commission.



CERTIFICATION

I hereby certify that the information contained herein is true and complete to the best of my knowledge and belief.

John W. West
 Name **JOHN W. WEST**

Position **AGENT**

Company **SOLAR OIL COMPANY**

Date **JUNE 2, 1969**

I hereby certify that the well location shown on this plat was plotted from field notes of actual surveys made by me or under my supervision, and that the same is true and correct to the best of my knowledge and belief.

Date Surveyed
MAY 28, 1969

Registered Professional Engineer
 and/or Land Surveyor

John W. West
 Certificate No. **676**