

COUNTY LEA FIELD Antelope Ridge

OPR LEA WEST OIL & GAS CORP. API 30-02

NO. 2 LEASE State "2" SERIAL

Sec 2, T-24-S, R-34-E MAP

1980' FSL, 1980' FWL of Sec CO-ORD

DATE	CMP	ELEV	CLASS		FORMATION	DATUM	FORMATION	DATUM
			FORMATION	DATUM				
4-28-73		8-21-73						
20" at 358' w/550 sx 13 3/8" at 5184' w/3600 sx 9 5/8" at 11,930' w/2200 sx 7 5/8" lnr 11,502-13,801' w/300 sx								
			TO	13,825'			PBO	13,800'

IP (Atoka) Perfs 12,407-480' CAOF 4030 MCFGPD. GOR 9500; Grav 54; Grav (gas) .647; SIWHP 7075#

IP (Morrow) Perfs 13,260-13,699' CAOF 4153 MCFGPD. GOR dry; Grav (gas) .630; SIWHP 6860#

CONTR McVay Drlg OPRS ELEV 14,800' PD 14,800' TYPE RT

F.R. 4-30-73
(Devonian)

5-1-73	Drlg 725'
5-8-73	Drlg 4185' "Tight"
5-14-73	Drlg 5184' "Tight"
5-20-73	Drlg 7060' "Tight"
5-29-73	Drlg 9020' "Tight"
6-4-73	Drlg 10,747' "Tight"
6-8-73	TD 11,390'; WOC
6-18-73	Drlg 12,191'
6-29-73	Drlg 12,941'
7-2-73	Drlg 13,220'
7-10-73	"Tight"
7-31-73	"Tight"

8-1-73

TD 13,825'; PB 13,800'; Prep perf
TD 13,825'; PB 13,800'; "Tight"

9-19-73

TD 13,825'; PB 13,800'; "Tight"

9-26-73

TD 13,825'; PB 13,800'; "Tight"

10-4-73

TD 13,825'; PB 13,800'; "Tight"

10-17-73

TD 13,825'; PB 13,800'; WO Pot

10-22-73

TD 13,825'; PB 13,800'; COMPLETE

Perf (Atoka) 12,407-414', 12,438-456', 12,473-480', w/1 SPF

Perf (Morrow) 13,260-302', 13,372-380', 13,438-454', 13,672-699' w/1 SPF

(Atoka) FOUR POINT GAUGES:

Flwd 1308 MCFGPD, 1 3/4" chk, 2 hrs, TP 5990#

Flwd 2068 MCFGPD, 1 3/4" chk, 2 hrs, TP 5382#

Flwd 2505 MCFGPD, 1 3/4" chk, 2 hrs, TP 4805#

Flwd 3345 MCFGPD, 1 3/4" chk, 2 hrs, TP 3240#

(Morrow) FOUR POINT GAUGES:

Flwd 2072 MCFGPD, 2" orifice, 2 hrs, TP 4362#

Flwd 2635 MCFGPD, 2" orifice, 2 hrs, TP 3540#

Flwd 3217 MCFGPD, 2" orifice, 2 hrs, TP 2795#

Flwd 3923 MCFGPD, 2" orifice, 2 hrs, TP 1546#

LOG TOPS: Delaware sand 5160', Bone Spring

8755', Atoka 12,014', Morrow 12,983'

COMPLETION REPORTED

10-27-73

NEW MEXICO OIL CONSERVATION COMMISSION WELL LOCATION AND ACREAGE DEDICATION PLAT

Form C-102
Supersedes C-128
Effective 1-1-65

All distances must be from the outer boundaries of the Section.

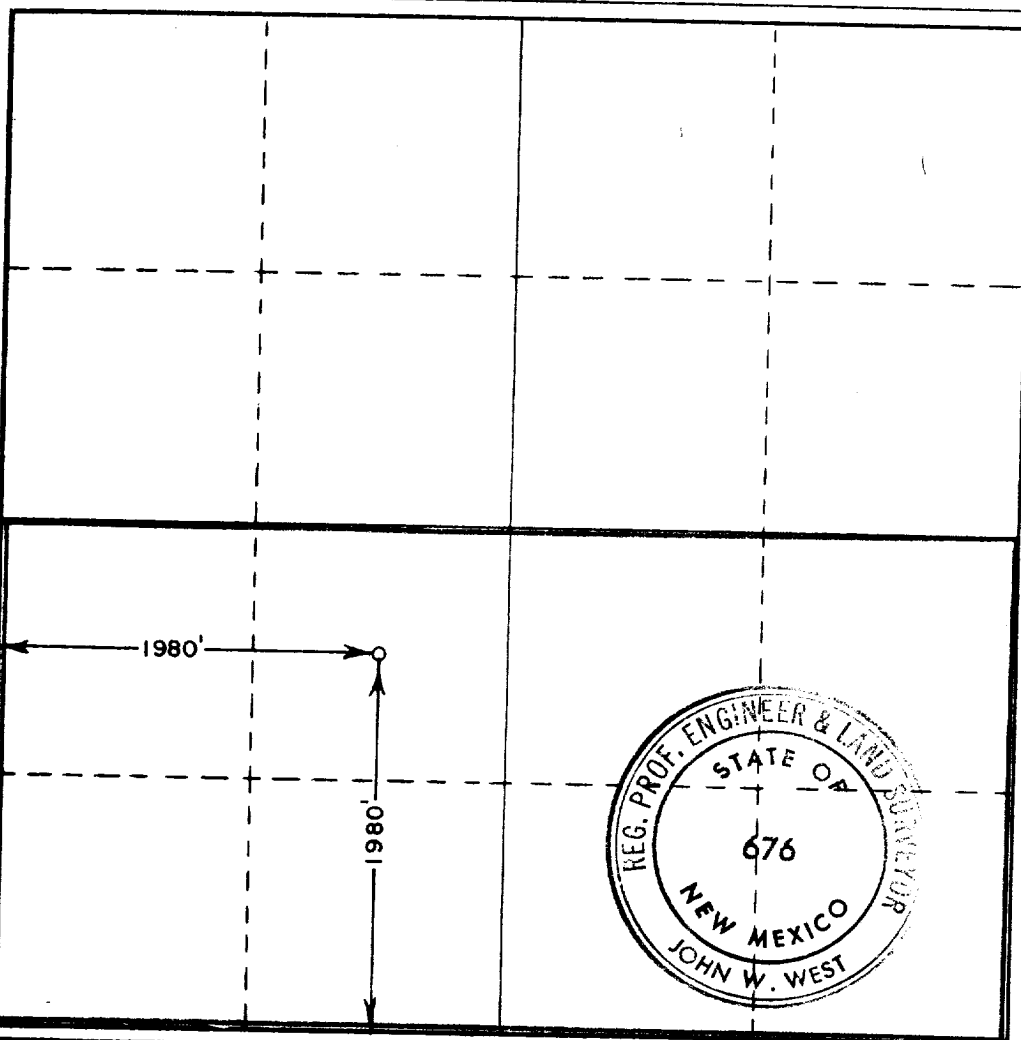
Operator TEXAS WEST OIL & GAS CORP.			Lease STATE 2		Well No. 2
Unit Letter K	Section 2	Township 24 SOUTH	Range 34 EAST	County LEA	
Actual Footage Location of Well:					
1980 feet from the SOUTH line and		1980 feet from the WEST line			
Ground Level Elev. 3451	Producing Formation Morrow-Devonian	Pool Antelope Ridge	Dedicated Acreage: 320 Acres		

1. Outline the acreage dedicated to the subject well by colored pencil or hachure marks on the plat below.
2. If more than one lease is dedicated to the well, outline each and identify the ownership thereof (both as to working interest and royalty).
3. If more than one lease of different ownership is dedicated to the well, have the interests of all owners been consolidated by communitization, unitization, force-pooling, etc?

☐ Yes ☐ No If answer is "yes," type of consolidation _____

If answer is "no," list the owners and tract descriptions which have actually been consolidated. (Use reverse side of this form if necessary.) _____

No allowable will be assigned to the well until all interests have been consolidated (by communitization, unitization, forced-pooling, or otherwise) or until a non-standard unit, eliminating such interests, has been approved by the Commission.



CERTIFICATION

I hereby certify that the information contained herein is true and complete to the best of my knowledge and belief.

Name

Roy K. Valla

Position

Vice-President

Company

Texas West Oil & Gas Corporation

Date

4/23/73

I hereby certify that the well location shown on this plat was plotted from field notes of actual surveys made by me or under my supervision, and that the same is true and correct to the best of my knowledge and belief.

Date Surveyed

APRIL 14, 1973

Registered Professional Engineer and/or Land Surveyor

Certificate No.

676

RECEIVED APR 16 1973

RECEIVED

10 2 1972

U.S. CONSERVATION COMM.
HOOVER, N. Y.

179

NEW MEXICO OIL CONSERVATION COMMISSION
WELL LOCATION AND ACREAGE DEDICATION PLAT

Form C-102
Subsided C-128
Effective 1-1-65

All distances must be from the outer boundaries of the Section.

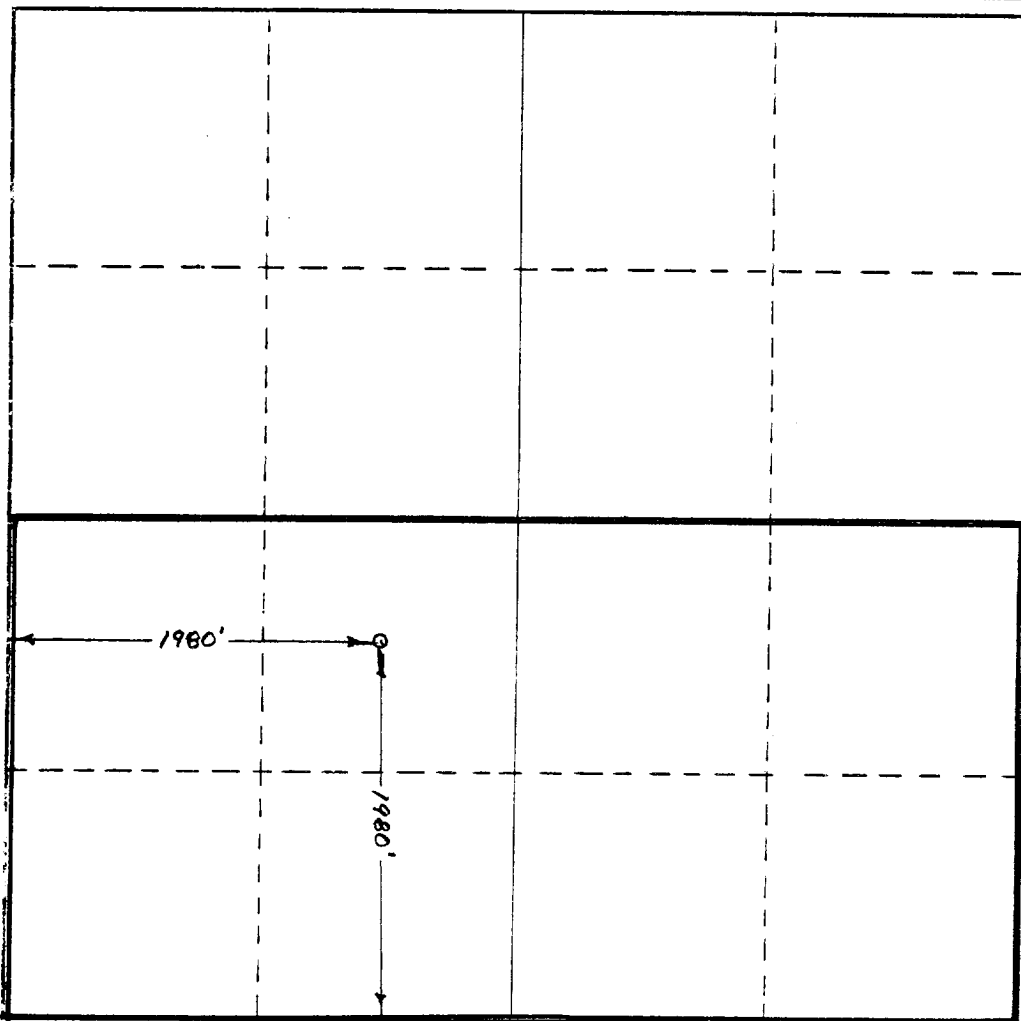
Operator Texas West Oil & Gas Corporation			Lease State 2		Well No. 2
Unit Letter K	Section 2	Township 24 South	Range 34 East	County Lea	
Actual Footage Location of Well: 1980 feet from the South line and 1980 feet from the West line					
Ground Level Elev. 3451	Producing Formation Atoka		Pool Antelope Ridge		Dedicated Acreage: 320 Acres

1. Outline the acreage dedicated to the subject well by colored pencil or hachure marks on the plat below.
2. If more than one lease is dedicated to the well, outline each and identify the ownership thereof (both as to working interest and royalty).
3. If more than one lease of different ownership is dedicated to the well, have the interests of all owners been consolidated by communitization, unitization, force-pooling, etc?

☐ Yes ☐ No If answer is "yes," type of consolidation _____

If answer is "no," list the owners and tract descriptions which have actually been consolidated. (Use reverse side of this form if necessary.) _____

No allowable will be assigned to the well until all interests have been consolidated (by communitization, unitization, forced-pooling, or otherwise) or until a non-standard unit, eliminating such interests, has been approved by the Commission.



CERTIFICATION

I hereby certify that the information contained herein is true and complete to the best of my knowledge and belief.

Roy K. Valla
Roy K. Valla

Name

Operations Manager

Position

Texas West Oil & Gas Corp

Company

18 September 1973

Date

I hereby certify that the well location shown on this plat was plotted from field notes of actual surveys made by me or under my supervision, and that the same is true and correct to the best of my knowledge and belief.

Date Surveyed

Registered Professional Engineer
and/or Land Surveyor

Certificate No.

0 330 660 990 1320 1650 1980 2310 2640 2970 3300 3630 3960 4290 4620 4950 5280 5610 5940 6270 6600