

NEW MEXICO OIL CONSERVATION COMMISSION
WELL LOCATION AND ACREAGE DEDICATION PLAT

All distances must be from the outer boundaries of the Section

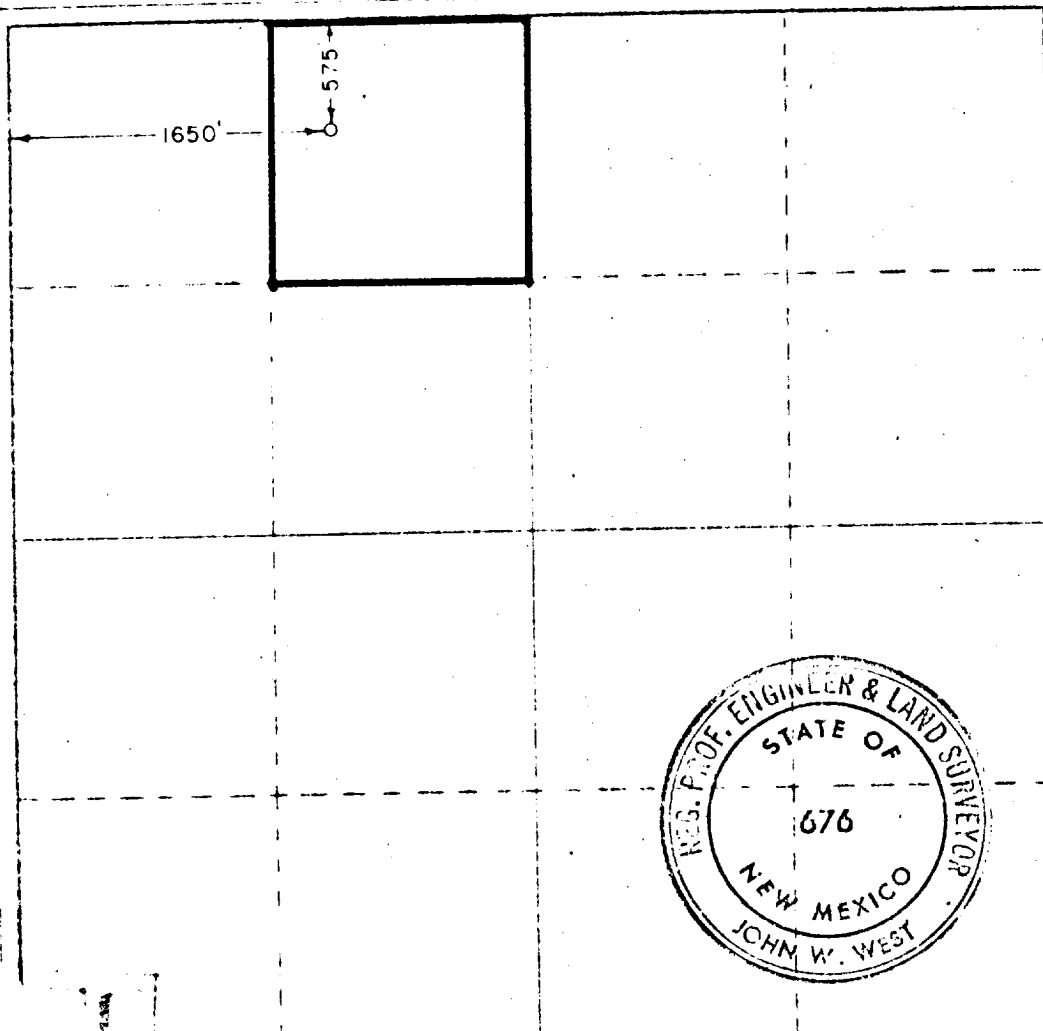
GULF OIL CORPORATION		LEA OC STATE		1
C	2	23 SOUTH	37 EAST	LEA
575	feet from the	NORTH	1650	feet from the
Queen		Langlie Mattix		40

- Outline the acreage dedicated to the subject well by colored pencil or hatchure marks on the plat below.
- If more than one lease is dedicated to the well, outline each and identify the ownership thereof (both as to working interest and royalty)
- If more than one lease of different ownership is dedicated to the well, have the interests of all owners been consolidated by communitization, unitization, force-pooling, etc?

☒ Yes ☐ No If answer is "yes," type of consolidation _____

If answer is "no," list the owners and tract descriptions which have actually been consolidated. (Use reverse side of this form if necessary.) _____

No allowable will be assigned to the well until all interests have been consolidated (by communitization, unitization, forced-pooling, or otherwise) or until a non-standard unit, eliminating such interests, has been approved by the Commission.



CERTIFICATION

I hereby certify that the information contained hereon is true and correct to the best of my knowledge and belief.

C. D. Borland

C. D. BORLAND

Area Production Manager

Gulf Oil Corporation

November 5, 1973

I hereby certify that the well location shown on this plat was plotted from field notes of actual surveys made by me or under my supervision and that the same is true and correct to the best of my knowledge and belief.

Date Surveyed

OCTOBER 31, 1973

Registered Professional
and Civil Surveyor

John W. West

Certification

676

40 90 1320 1650 1980 2310 2640 2000 1800 1000 800 0