

UNITED STATES
DEPARTMENT OF THE INTERIOR
GEOLOGICAL SURVEY

APPLICATION FOR PERMIT TO DRILL, DEEPEN, OR PLUG BACK

1a. TYPE OF WORK
 DRILL DEEPEN PLUG BACK

b. TYPE OF WELL
 OIL WELL GAS WELL OTHER
 SINGLE ZONE MULTIPLE ZONE

2. NAME OF OPERATOR
 CONTINENTAL OIL COMPANY

3. ADDRESS OF OPERATOR
 P.O. Box 460 Hobbes, N.M. 88240

4. LOCATION OF WELL (Report location clearly and in accordance with any State requirements.)*
 At surface
 990' FSL and 2310' FWL
 At proposed prod. zone
 ✓

14. DISTANCE IN MILES AND DIRECTION FROM NEAREST TOWN OR POST OFFICE*

15. DISTANCE FROM PROPOSED* LOCATION TO NEAREST PROPERTY OR LEASE LINE, FT. (Also to nearest drig. unit line, if any)

18. DISTANCE FROM PROPOSED LOCATION* TO NEAREST WELL, DRILLING, COMPLETED, OR APPLIED FOR, ON THIS LEASE, FT.

21. ELEVATIONS (Show whether DF, RT, GR, etc.)
 3344.6' GR

23. PROPOSED CASING AND CEMENTING PROGRAM

SIZE OF HOLE	SIZE OF CASING	WEIGHT PER FOOT	SETTING DEPTH	QUANTITY OF CEMENT
12 1/4"	9 5/8"	32#	1220'	450 sx (circ)
8 3/4"	7"	20#	3600'	435 sx.

IT IS PROPOSED TO DRILL A STRAIGHT HOLE TO A TD OF 3600' and complete AS A SEVEN RIVERS oil well.

SEE ATTACHMENT FOR FORMATION TOPS, CASING and mud programs, logging and BOP.
 SEE ATTACHED FOR SURFACE Use Plan.

RECEIVED

DEC 13 1978

U. S. GEOLOGICAL SURVEY
 HOBBS, NEW MEXICO

IN ABOVE SPACE DESCRIBE PROPOSED PROGRAM: If proposal is to deepen or plug back, give data on present productive zone and proposed new productive zone. If proposal is to drill or deepen directionally, give pertinent data on subsurface locations and measured and true vertical depths. Give blowout preventer program, if any.

24. SIGNED Wm. A. Butterfield TITLE ADMINISTRATIVE SUPERVISOR DATE 12-6-78

(This space for Federal or State office use)

PERMIT NO. _____ APPROVAL DATE _____

APPROVED BY _____ TITLE _____

CONDITIONS OF APPROVAL, IF ANY:

4565 5
 NMPU 4
 FILE
 JFB RELEASE

*See Instructions On Reverse Side

APPROVED
 AS AMENDED
 DATE
 FEB 1 1979
 James F. Sims
 JAMES F. SIMS
 DISTRICT ENGINEER

5. LEASE DESIGNATION AND SERIAL NO.
 LC 030467 (2)
 6. IF INDIAN, ALLOTTEE OR TRIBE NAME
 7. UNIT AGREEMENT NAME
~~UNIT~~
 8. FARM OR LEASE NAME
 VAUGHAN A-14
 9. WELL NO.
 7
 10. FIELD AND POOL OR WILDCAT
 JALMAT
~~UNIT~~ - 7 RIVERS
 11. SEC., T., R., M., OR BLK. AND SURVEY OR AREA
 SEC. 14, T-24S, R36E
 12. COUNTY OR PARISH
 LEA
 13. STATE
 N.M.

NEW MEXICO OIL CONSERVATION COMMISSION
WELL LOCATION AND ACREAGE DEDICATION PLAT

Form C-102
Supersedes C-128
Effective 1-1-65

All distances must be from the outer boundaries of the Section

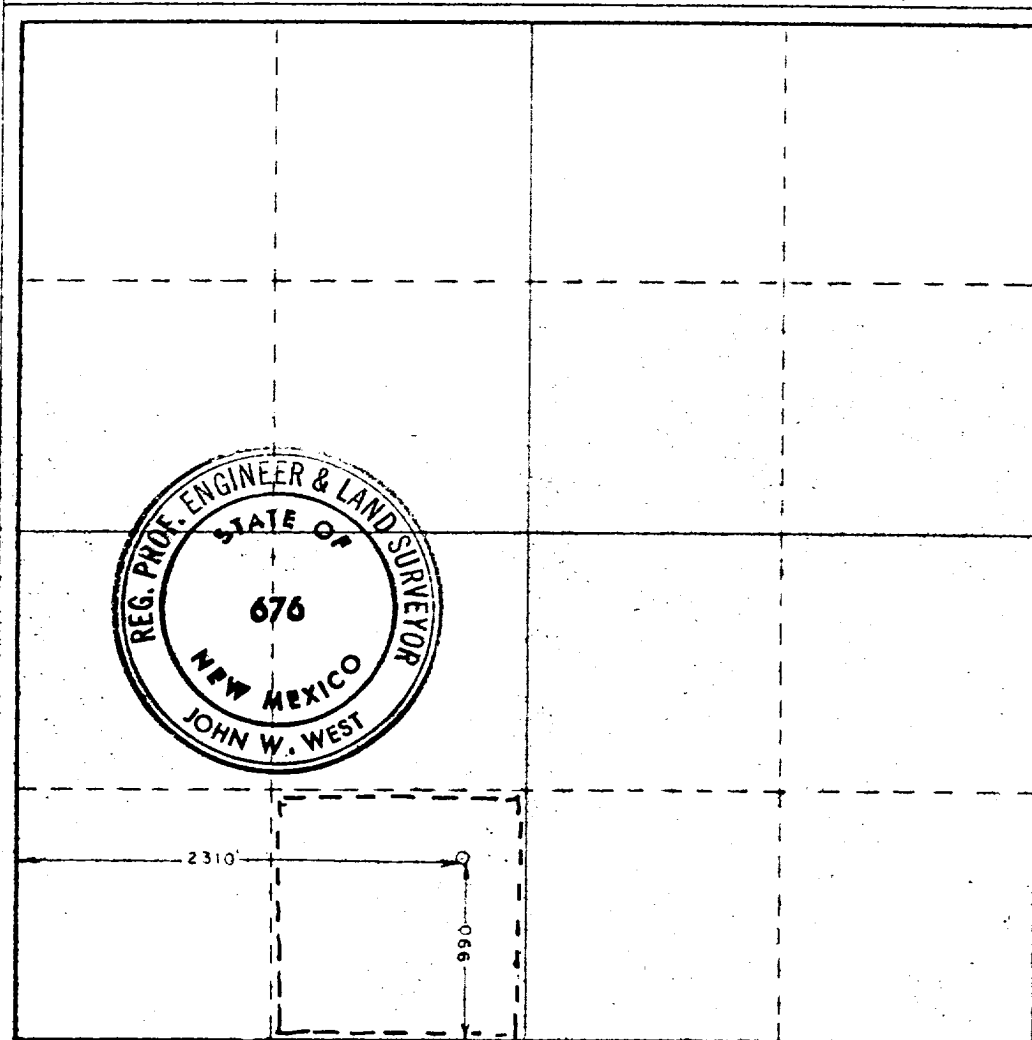
Operator Continental Oil Co.		Lease Vaughn "A" 14		Well No. 7
Grid Letter N	Section 14	Township 24 South	Range 36 East	County Lea
Actual Footage Location of Well: 990 feet from the South line and 2310 feet from the West line				
Ground Level Elev. 3344.6	Producing Formation SEVEN RIVERS	Pool JALMAT	Dedicated Acreage: 40 Acres	

- Outline the acreage dedicated to the subject well by colored pencil or hachure marks on the plat below.
- If more than one lease is dedicated to the well, outline each and identify the ownership thereof (both as to working interest and royalty).
- If more than one lease of different ownership is dedicated to the well, have the interests of all owners been consolidated by communitization, unitization, force-pooling, etc?

Yes No If answer is "yes," type of consolidation _____

If answer is "no," list the owners and tract descriptions which have actually been consolidated. (Use reverse side of this form if necessary.) _____

No allowable will be assigned to the well until all interests have been consolidated (by communitization, unitization, forced-pooling, or otherwise) or until a non-standard unit, eliminating such interests, has been approved by the Commission.



CERTIFICATION

I hereby certify that the information contained herein is true and complete to the best of my knowledge and belief.

Name: **Wm. A. Butterfield**
 Position: **ADMINISTRATIVE SUPERVISOR**
 Company: **CONTINENTAL OIL CO.**
 Date: **12-6-78**

I hereby certify that the well location shown on this plat was plotted from field notes of actual surveys made by me or under my supervision, and that the same is true and correct to the best of my knowledge and belief.

Date Surveyed
November 28, 1978

Registered Professional Engineer and/or Land Surveyor

John W. West
 Certificate No. **John W. West 676**
Ronald J. Eidson 3239

