

COMPLETIONS SEC 34 TWP 24S RGE 34E  
PI# 30-T-0024 06/15/90 30-025-28596-0001 PAGE 1

30 MI SE HALFWAY, NM

PROJ FM CHGD FROM WOLFCAMP

OPER FOUND 5 1/2 CSG PLD ABOVE 6534, RAN 5 1/2 TIEBACK  
CSG TO THAT DEPTH

TBG 2 3/8 AT 13640

IPF 4BOPD 234 MCFD 31BW 12/64CK 24HRS  
STRN LM PERF W/ 48/1T 13647-13780  
PERF 13647-13780  
TP 325  
GTY 53.0 GOR 58000  
FIELD /RESERVOIR  
/STRAWN  
FCP PKR  
NATURAL

Copyrighted 1990  
Reproduction  
Prohibited

## Petroleum Information

**EB** a company of  
The Dun & Bradstreet Corporation

Form No. 101

COMPLETIONS SEC 34 TWP 24S RGE 34E  
PI# 30-T-0024 06/15/90 30-025-28596-0001 PAGE 2

WILBANKS BRUCE A D X DO  
1 MOORE "34" COM

DRILLING PROGRESS DETAILS

WILBANKS BRUCE A  
BOX 763  
MIDLAND, TX 79702  
915-682-7582

OWWG: OLD INFO: FORMERLY HNG OIL 1 MOORE "34"  
COM. ELEV 3402 GR. SPUD 2/13/84. 11 3/4 @ 615  
W/415 SX, 8 5/8 @ 5233 W/1250 SX, 5 1/2 @ 13540  
W/1210 SX, 3 1/2 LNR 13209-15370 W/250 SX. LOG  
TOPS: ATOKA 13853, MORROW LOWER 14385, MORROW  
CLASTIC 14586. OTD 15376. PB 14385. COMP  
9/18/84. IPF 168 BOPD THRU 14/64 CHK. PROD ZONE:  
WOLFCAMP 13490-13500. PLUGGED PRODUCER 1/28/88.

04/02 LOC/1990/

06/14 DO CMT PLUGS TO 13800

06/14 15376 TD, PB 13800

COMP 4/30/90, IPF 4 BO, 234 MCFG, 31 BWPD,  
12/64 CHK, GOR 58000, GTY  
53, FTP 325, FCP PKR

PROD ZONE - STRAWN 13647-13780

Submit to Appropriate  
District Office  
State Lease - 4 copies  
Fee Lease - 3 copies

State of New Mexico  
Energy, Minerals and Natural Resources Department

Form C-102  
Revised 1-1-89

OIL CONSERVATION DIVISION

P.O. Box 2088  
Santa Fe, New Mexico 87504-2088

DISTRICT I

P.O. Box 1980, Hobbs, NM 88240

DISTRICT II

P.O. Drawer DD, Artesia, NM 88210

DISTRICT III

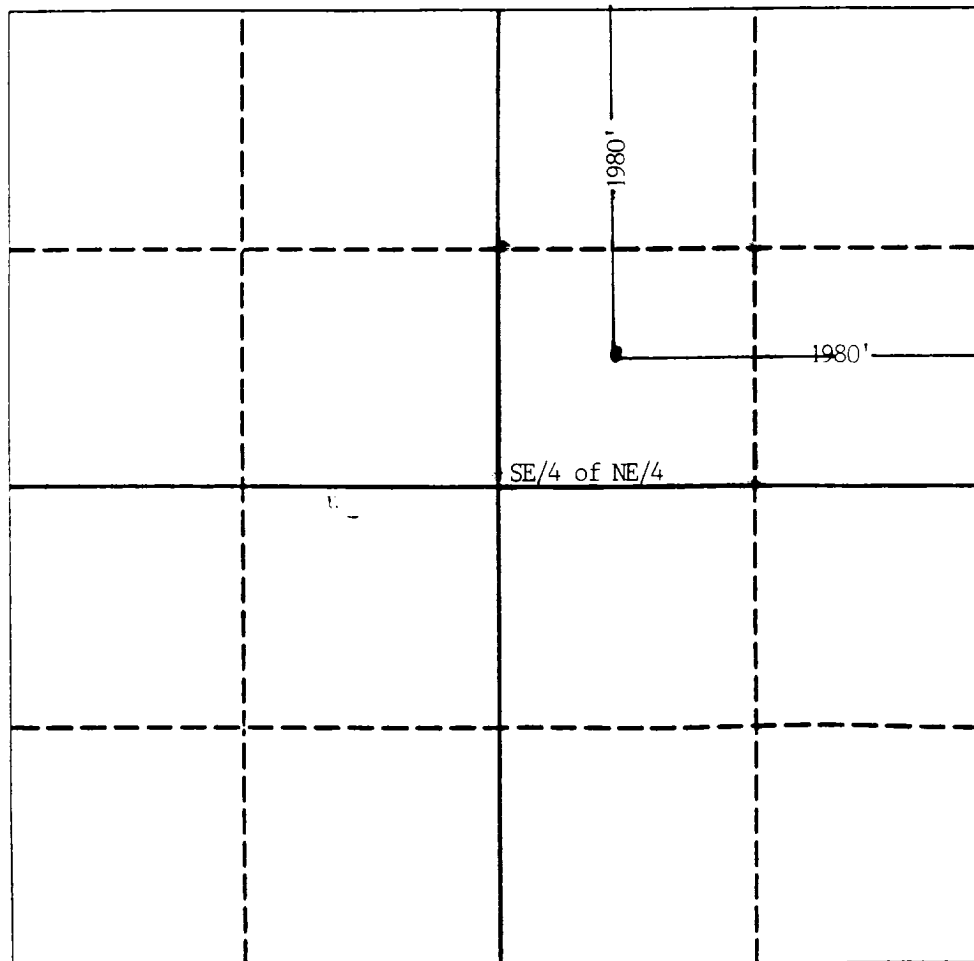
1000 Rio Brazos Rd., Aztec, NM 87410

WELL LOCATION AND ACREAGE DEDICATION PLAT

All Distances must be from the outer boundaries of the section

Operator		Lease		Well No.	
BWA OIL & GAS		MOORE 34		1	
Unit Letter	Section	Township	Range	County	
G	34	24-S	34-E	NMPM	LEA
Actual Footage Location of Well:					
1980' feet from the NORTH line and		1980' feet from the EAST line			
Ground level Elev.		Producing Formation		Dedicated Acreage.	
STRAWN		PITCHFORK RANCH STRAWN		40 Acres	

- Outline the acreage dedicated to the subject well by colored pencil or hatchure marks on the plat below.
- If more than one lease is dedicated to the well, outline each and identify the ownership thereof (both as to working interest and royalty)
- If more than one lease of different ownership is dedicated to the well, have the interest of all owners been consolidated by communitization, unitization, force-pooling, etc.?  
☐ Yes ☐ No If answer is "yes" type of consolidation \_\_\_\_\_  
If answer is "no" list the owners and tract descriptions which have actually been consolidated. (Use reverse side of this form if necessary.) \_\_\_\_\_  
No allowable will be assigned to the well until all interests have been consolidated (by communitization, unitization, forced-pooling, or otherwise) or until a non-standard unit, eliminating such interest, has been approved by the Division.



OPERATOR CERTIFICATION

I hereby certify that the information contained herein is true and complete to the best of my knowledge and belief.

*Bob L. Watkins*  
Signature

Bob L. Watkins  
Printed Name

operator  
Position

BWA Oil & Gas  
Company

6-20-91  
Date

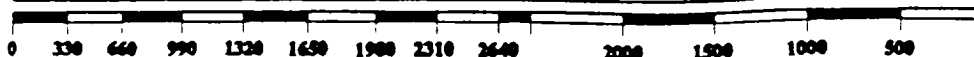
SURVEYOR CERTIFICATION

I hereby certify that the well location shown on this plat was plotted from field notes of actual surveys made by me or under my supervision, and that the same is true and correct to the best of my knowledge and belief.

Date Surveyed

Signature & Seal of  
Professional Surveyor

Certificate No.



**NEW MEXICO OIL CONSERVATION COMMISSION  
WELL LOCATION AND ACREAGE DEDICATION PLAT**

G-102  
Supersedes G-128  
Effective 1-1-65

All distances must be from the outer boundaries of the Section.

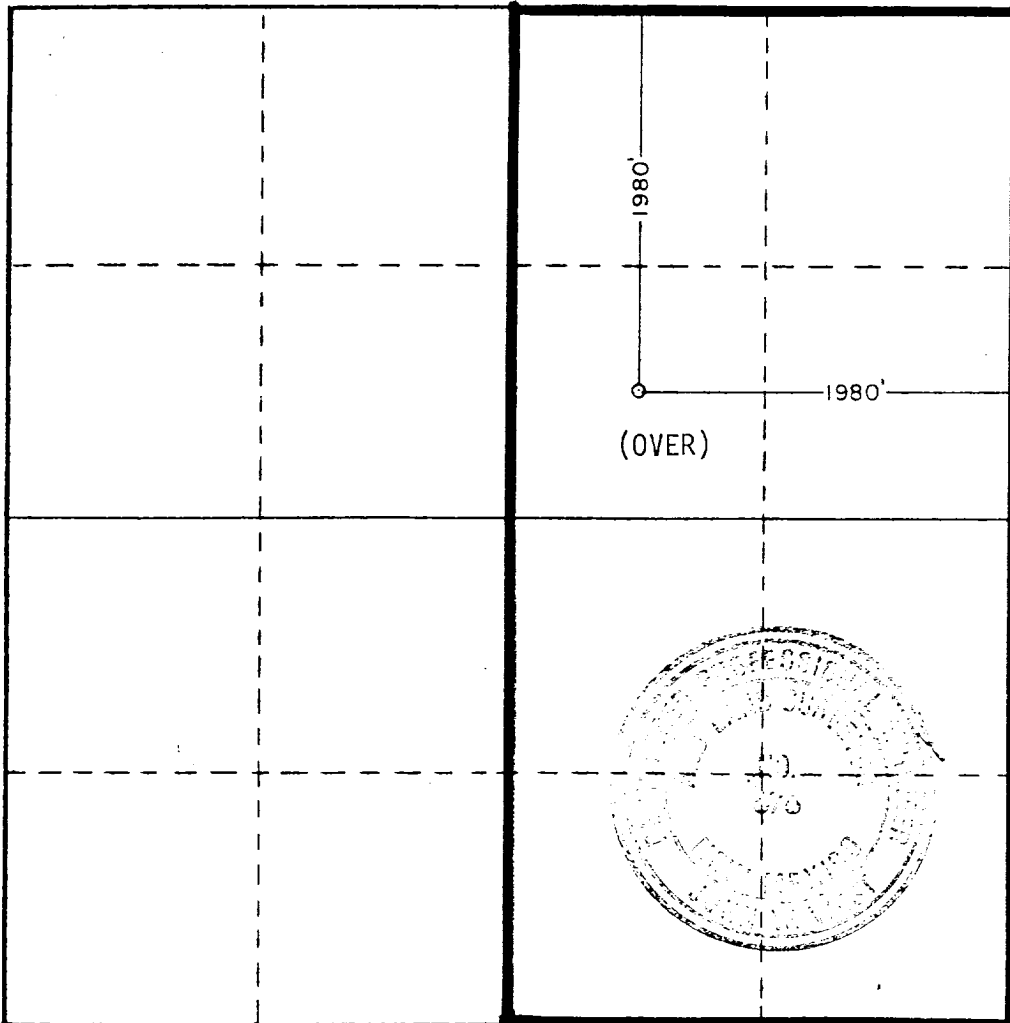
Operator <b>HNG OIL CO.</b>			Lease <b>MOORE 34 COM.</b>		Well No. <b>1</b>
Unit Letter <b>G</b>	Section <b>34</b>	Township <b>24 S</b>	Range <b>34 E</b>	County <b>LEA</b>	
Actual Footage Location of Well: <div style="display: flex; justify-content: space-between;"> <span><b>1980</b> feet from the <b>NORTH</b> line and</span> <span><b>1980</b> feet from the <b>EAST</b> line</span> </div>					
Ground Level Elev. <b>3401.6</b>	Producing Formation <b>Wolfcamp</b>	Pool <b>Pitchfork Ranch</b>		Dedicated Acreage: <b>320</b> Acres	

1. Outline the acreage dedicated to the subject well by colored pencil or hachure marks on the plat below.
2. If more than one lease is dedicated to the well, outline each and identify the ownership thereof (both as to working interest and royalty).
3. If more than one lease of different ownership is dedicated to the well, have the interests of all owners been consolidated by communitization, unitization, force-pooling, etc?

☐ Yes   ☐ No   If answer is "yes," type of consolidation \_\_\_\_\_

If answer is "no," list the owners and tract descriptions which have actually been consolidated. (Use reverse side of this form if necessary.) \_\_\_\_\_

No allowable will be assigned to the well until all interests have been consolidated (by communitization, unitization, forced-pooling, or otherwise) or until a non-standard unit, eliminating such interests, has been approved by the Commission.



**CERTIFICATION**

I hereby certify that the information contained herein is true and complete to the best of my knowledge and belief.

*Betty Gildon*  
Name

Betty Gildon

Position

Regulatory Analyst

Company

HNG OIL COMPANY

Date

August 27, 1984

I hereby certify that the well location shown on this plat was plotted from field notes of actual surveys made by me or under my supervision, and that the same is true and correct to the best of my knowledge and belief.

Date Surveyed

1-27-84

Registered Professional Engineer and/or Land Surveyor

*John W. West*

Certificate No. JOHN W. WEST, 676

RONALD J. EIDSON, 3239

