

P. O. BOX 2088

SANTA FE, NEW MEXICO 87501

COPIES OF COPIES RECEIVED	
DISTRIBUTION	
SANTA FE	
FILE	
U.S.G.S.	
LAND OFFICE	
OPERATOR	

5A. Indicate Type of Lease
STATE <input checked="" type="checkbox"/> FEE <input type="checkbox"/>

5. State Oil & Gas Lease No.
V-750

APPLICATION FOR PERMIT TO DRILL, DEEPEN, OR PLUG BACK

a. Type of Work

DRILL ☒DEEPEN ☐PLUG BACK ☐

b. Type of Well

OIL WELL ☒GAS WELL ☐

OTHER

SINGLE ZONE ☒MULTIPLE ZONE ☐

2. Name of Operator

Exxon Corporation

3. Address of Operator

Box 1600, Midland, Texas 79702

4. Location of Well

UNIT LETTER P

LOCATED 660

FEET FROM THE South

LINE

AND

660

FEET FROM THE East

LINE OF SEC. 2

TWP. 24S

RGE. 32E

NMPM

12. County

Lea

10. Field and Pool, or Wildcat
Undesignated
Double X Delaware9. Well No.
1

8. Farm or Lease Name

New Mexico EH State

7. Unit Agreement Name

1. Elevations (show whether DF, RT, etc.)

3611' GR

21A. Kind & Status Plug. Bond

Blanket

19. Proposed Depth

5600

19A. Formation

Delaware

20. Rotary or C.T.

Rotary

22. Approx. Date Work will start
3rd Qtr. 198421B. Drilling Contractor
Unknown

23.

PROPOSED CASING AND CEMENT PROGRAM

SIZE OF HOLE	SIZE OF CASING	WEIGHT PER FOOT	SETTING DEPTH	SACKS OF CEMENT	EST. TOP
11" or 12 1/4"	8 5/8"	24	450	500	Surface
7 7/8"	5 1/2"	14	5200	1300	Tied Back to 8 5/8" csg.

Mud Program: 0-600' FW-Spud Mud 8.3 ppg
600-5200' BW 10 ppg

BOP: Type II-C 2000 psi minimum WP

Diagrammatic sketch and specification of BOP are attached. Gas is not dedicated to a purchaser. (Gas Well Only)

APPROVAL VALID FOR 180 DAYS
PERMIT EXPIRES 3-1-85
UNLESS DRILLING UNDERWAY

4. ABOVE SPACE DESCRIBE PROPOSED PROGRAM; IF PROPOSAL IS TO DEEPEN OR PLUG BACK, GIVE DATA ON PRESENT PRODUCTIVE ZONE AND PROPOSED NEW PRODUCTIVE ZONE. GIVE BLOWOUT PREVENTER PROGRAM, IF ANY.

I hereby certify that the information above is true and complete to the best of my knowledge and belief.

Signed Michele Knippling Title Unit Head Date 9-4-84

(This space for State Use)

ORIGINAL SHOULD BE RETURNED TO
OIL CONSERVATION DIVISIONAPPROVED BY UNIT HEAD TITLE UNIT HEAD DATE 9-4-84

CONDITIONS OF APPROVAL, IF ANY:

Exxon Lse. No. _____ NE MEXICO OIL CONSERVATION COMMISSION
State Lse. No. _____ WELL LOCATION AND ACREAGE DEDICATION AT
Federal Lse. No. _____ All distances must be from the outer boundaries of the Section.

Form C-102
Supersedes C-128
Effective 1-4-65

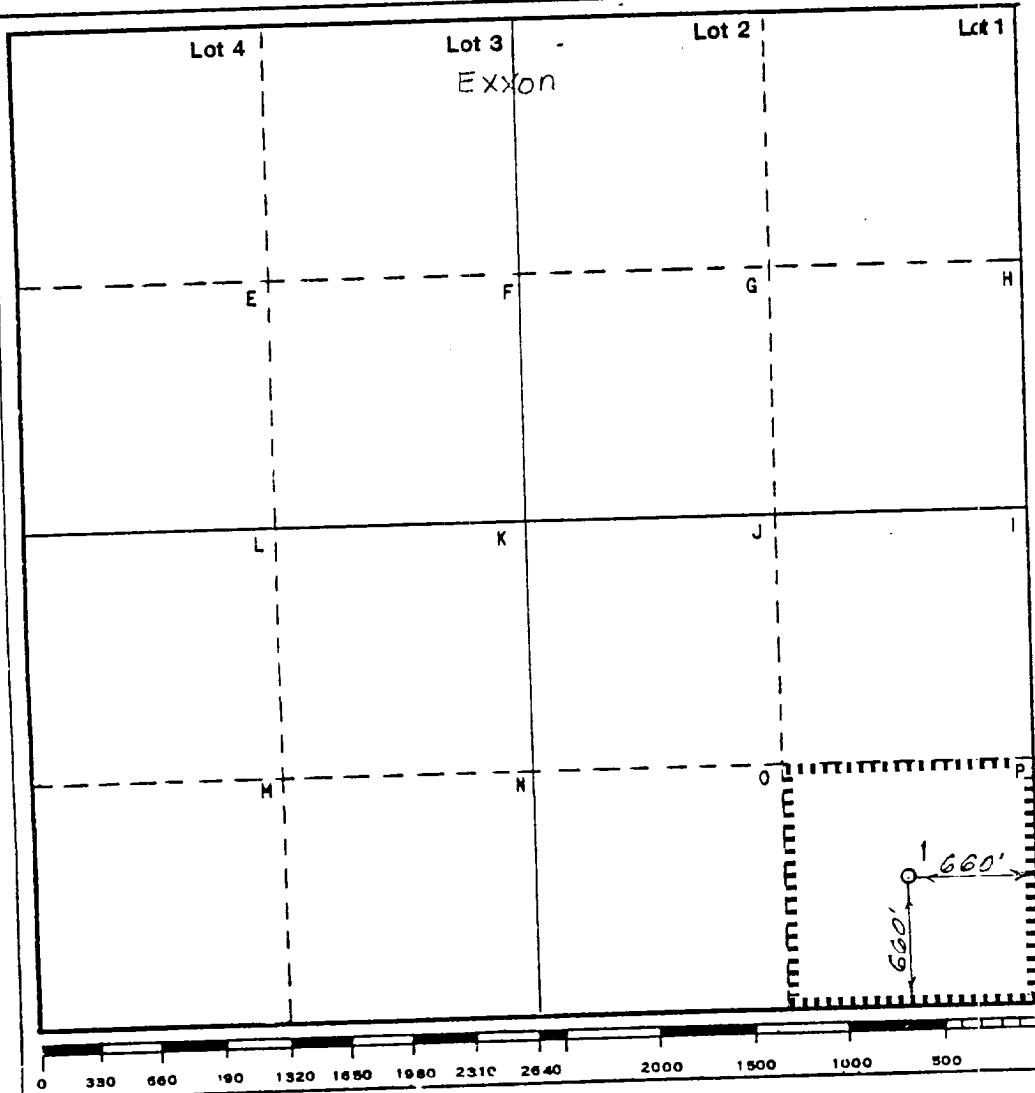
Operator Exxon Corporation		Lease New Mexico "EH" State		Well No. 1
Unit Letter P	Section 2	Township 24 S	Range 32 E	County Lea
Actual Footage Location of Well: 660 feet from the South line and 660 feet from the East line				
Ground Level Elev: 3611	Producing Formation Delaware	Pool Undesia Double X Delaware	Dedicated Acreage: 40 Acres	

1. Outline the acreage dedicated to the subject well by colored pencil or hachure marks on the plat below.
2. If more than one lease is dedicated to the well, outline each and identify the ownership thereof (both as to working interest and royalty).
3. If more than one lease of different ownership is dedicated to the well, have the interests of all owners been consolidated by communitization, unitization, force-pooling, etc?

☐ Yes ☐ No If answer is "yes," type of consolidation _____

If answer is "no," list the owners and tract descriptions which have actually been consolidated. (Use reverse side of this form if necessary.) _____

No allowable will be assigned to the well until all interests have been consolidated (by communitization, unitization, forced-pooling, or otherwise) or until a non-standard unit, eliminating such interests, has been approved by the Commission.



CERTIFICATION

I hereby certify that the information contained herein is true and complete to the best of my knowledge and belief.

Name
Bruce R. Pennell
Position

UNIT HEAD

Company Exxon Corporation
Box 1600 Midland, Texas

Date
7-4-84

I hereby certify that the well location shown on this plat was plotted from field notes of actual surveys made by me or under my supervision, and that the same is true and correct to the best of my knowledge and belief.

Date Surveyed
6-25-84

Registered Professional Engineer
and/or Land Surveyor

Bruce R. Pennell
Certificate No.

#9062

27.6 Miles NIV of Jal, New Mexico

C.E. Sec. File No. IVA-8549

BLOWOUT PREVENTER SPECIFICATIONS
EQUIPMENT DESCRIPTION

TYPE II-C

All equipment should be at least 2000 psi WP or higher unless otherwise specified.

1. Bell nipple.
2. Hydril or Shaffer bag type preventer.
3. Ram type pressure operated blowout preventer with blind rams.
4. Flanged spool with one 4-inch and one 2-inch (minimum) outlet.
5. 2-inch (minimum) flanged plug or gate valve.
6. 2-inch by 2-inch by 2-inch (minimum) flanged tee.
7. 4-inch pressure operated gate valve.
8. 4-inch flanged gate or plug valve.
9. Ram type pressure operated blowout preventer with pipe rams.
10. Flanged type casing head with one side outlet (furnished by Exxon).
11. 2-inch threaded (or flanged) plug or gate valve (furnished by Exxon).
Flanged on 5000# WP, threaded on 3000# WP or less.
12. Needle valve (furnished by Exxon).
13. 2-inch nipple (furnished by Exxon).
14. Tapped bull plug (furnished by Exxon).
15. 4-inch flanged spacer spool.
16. 4-inch by 2-inch by 2-inch by 2-inch flanged cross.
17. 2-inch flanged plug or gate valve.
18. 2-inch flanged adjustable choke.
19. 2-inch threaded flange.
20. 2-inch XXH nipple.
21. 2-inch forged steel 90° Ell.
22. Cameron (or equal.) threaded pressure gage.
23. Threaded flange.
35. 2-inch flanged tee.
36. 3-inch (minimum) hose. (Furnished by Exxon).
37. Trip tank. (Furnished by Exxon).
38. 2-inch flanged plug or gate valve.
39. 2-1/2-inch pipe, 300' to pit, anchored.
40. 2-1/2-inch SE valve.
41. 2-1/2-inch line to steel pit or separator.

NOTES:

1. Items 3, 4 and 9 may be replaced with double ram type preventer with side outlets between the rams.
2. The two valves next to the stack on the fill and kill line to be closed unless drill string is being pulled.
3. Kill line is for emergency use only. This connection shall not be used for filling.
4. Replacement pipe rams and blind rams shall be on location at all times.
5. Only type U, LWS and QRC ram type preventers with secondary seals are acceptable for 5000 psi WP and higher BOP stacks.
6. Type E ram-type BOP's with factory modified side outlets may be used on 3000 psi or lower WP BOP stacks.

MIDLAND DRILLING ORGANIZATION



RECEIVED

SEP 5 1984

PULL
HODIN'S OFFICE

1-1-84
1-1-84
1-1-84