

District I  
 PO Box 1980, Hobbs, NM 88241-1980  
 District II  
 PO Drawer DD, Artesia, NM 88211-0719  
 District III  
 1000 Rio Brazos Rd., Aztec, NM 87410  
 District IV  
 PO Box 2088, Santa Fe, NM 87504-2088

State of New Mexico  
 Energy, Minerals & Natural Resources Department

OIL CONSERVATION DIVISION  
 PO Box 2088  
 Santa Fe, NM 87504-2088

Form C-101  
 Revised February 10, 1994  
 Instructions on back  
 Submit to Appropriate District Office  
 State Lease - 6 Copies  
 Fee Lease - 5 Copies

AMENDED REPORT

APPLICATION FOR PERMIT TO DRILL, RE-ENTER, DEEPEN, PLUGBACK, OR ADD A ZONE

<sup>1</sup> Operator Name and Address. Enron Oil & Gas Company P. O. Box 2267 Midland, Texas 79702		<sup>2</sup> OGRID Number 7377
		<sup>3</sup> API Number 30-025-33522
<sup>4</sup> Property Code 19275	<sup>5</sup> Property Name Bell Lake Unit <u>7</u>	<sup>6</sup> Well No. 1

<sup>7</sup> Surface Location

UL or lot no.	Section	Township	Range	Lot Idn	Feet from the	North/South line:	Feet from the	East/West line	County
G	7	24S	34E		2200	north	1980	east	Lea

<sup>8</sup> Proposed Bottom Hole Location If Different From Surface

UL or lot no.	Section	Township	Range	Lot Idn	Feet from the	North/South line:	Feet from the	East/West line	County
<sup>9</sup> Proposed Pool 1 South Bell Lake Morrow (22000) 71960					<sup>10</sup> Proposed Pool 2				

<sup>11</sup> Work Type Code N	<sup>12</sup> Well Type Code G	<sup>13</sup> Cable/Rotary Rotary	<sup>14</sup> Lease Type Code P	<sup>15</sup> Ground Level Elevation 3612'
<sup>16</sup> Multiple No	<sup>17</sup> Proposed Depth 14,500'	<sup>18</sup> Formation Morrow C & D-2	<sup>19</sup> Contractor Unknown	<sup>20</sup> Spud Date 8/1/96

<sup>21</sup> Proposed Casing and Cement Program

Hole Size	Casing Size	Casing weight/foot	Setting Depth	Sacks of Cement	Estimated TOC
17-1/2	13-3/8	48	650	575	Circulated
12-1/4	9-5/8	36/40	5200	2200	Circulated
8-3/4	7	26	12500	800	5200'
6-1/2	3-1/2	12.95/9.30	14500	275	12000'

<sup>22</sup> Describe the proposed program. If this application is to DEEPEN or PLUG BACK give the data on the present productive zone and proposed new productive zone. Describe the blowout prevention program, if any. Use additional sheets if necessary.

SEE ATTACHED BOP SCHEMATIC  
 Permit Expires 1 Year From Approval Date Unless Drilling Underway

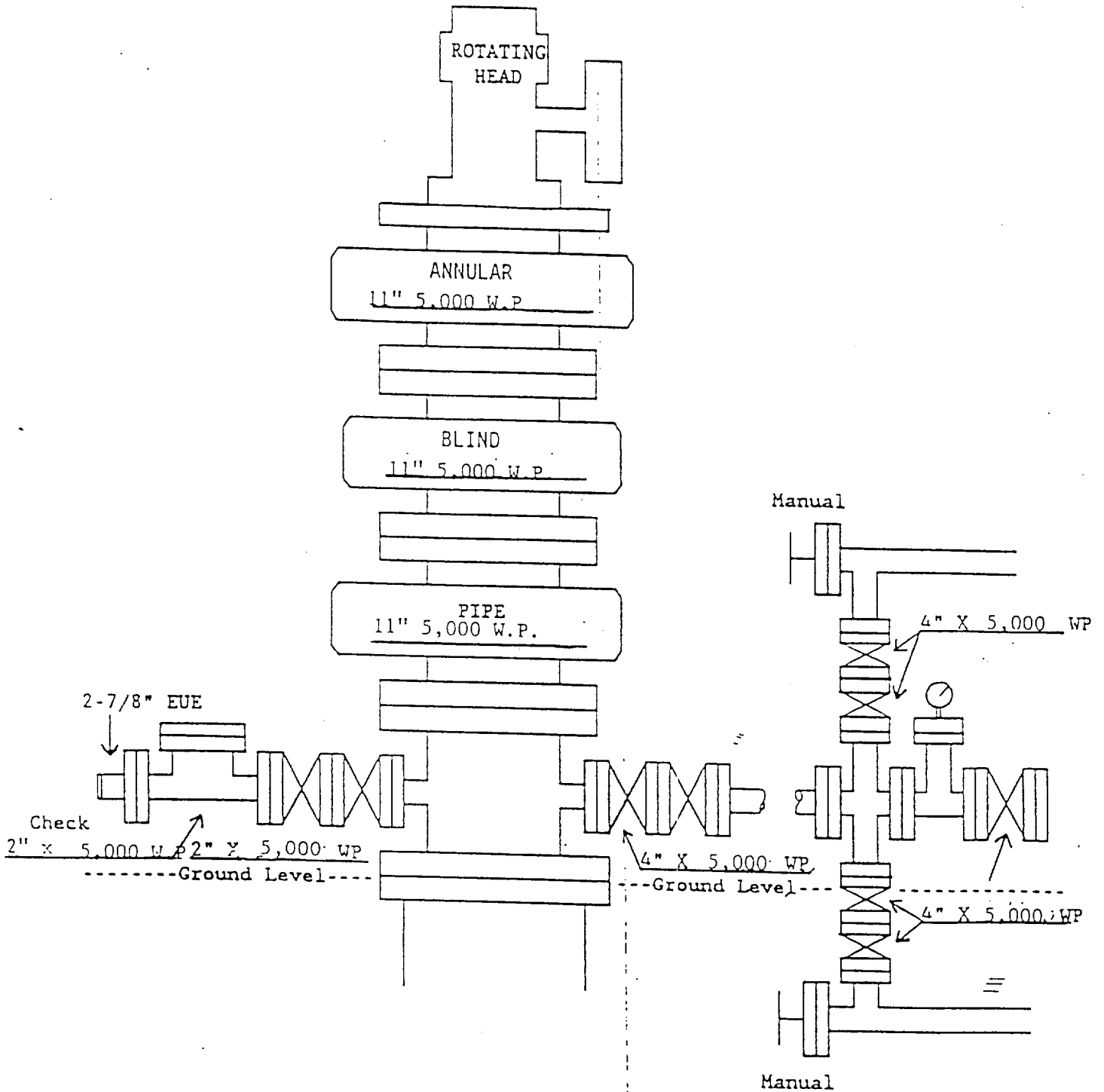
<sup>23</sup> I hereby certify that the information given above is true and complete to the best of my knowledge and belief.

Signature: *Betty Gildon*  
 Printed name: Betty Gildon  
 Title: Regulatory Analyst  
 Date: 7/24/96  
 Phone: 915/686-3714

OIL CONSERVATION DIVISION	
Approved by:	
Title:	
Approval Date: JUL 26 1996	Expiration Date:
Conditions of Approval: Attached <input type="checkbox"/>	

ENRON OIL & GAS COMPANY

Bell Lake Unit 7 #1



District I  
PO Box 1980, Hobbs, NM 88241-1980

District II  
PO Drawer DD, Artesia, NM 88211-0719

District III  
1000 Rio Brazos Rd., Aztec, NM 87410

District IV  
PO Box 2088, Santa Fe, NM 87504-2088

State of New Mexico  
Energy, Minerals & Natural Resources Department

OIL CONSERVATION DIVISION  
PO Box 2088  
Santa Fe, NM 87504-2088

Form C-102  
Revised February 21, 1994  
Instructions on back  
Submit to Appropriate District Office  
State Lease - 4 Copies  
Fee Lease - 3 Copies

AMENDED REPORT

WELL LOCATION AND ACREAGE DEDICATION PLAT

<sup>1</sup> API Number 30-025-33522		<sup>2</sup> Pool Code <del>72600</del> 71960		<sup>3</sup> Pool Name South Bell Lake Morrow	
<sup>4</sup> Property Code 19275		<sup>5</sup> Property Name BELL LAKE UNIT 17			<sup>6</sup> Well Number 1
<sup>7</sup> OGRID No. 7377		<sup>8</sup> Operator Name ENRON OIL AND GAS COMPANY			<sup>9</sup> Elevation 3612

<sup>10</sup>Surface Location

UL or lot no.	Section	Township	Range	Lot Idn	Feet from the	North/South line	Feet from the	East/West line	County
G	7	24-S	34-E		2200	NORTH	1980	EAST	LEA

<sup>11</sup>Bottom Hole Location If Different From Surface

UL or lot no.	Section	Township	Range	Lot Idn	Feet from the	North/South line	Feet from the	East/West line	County

<sup>12</sup> Dedicated Acres E/2 320	<sup>13</sup> Joint or Infill	<sup>14</sup> Consolidation Code	<sup>15</sup> Order No.
--	-------------------------------	----------------------------------	-------------------------

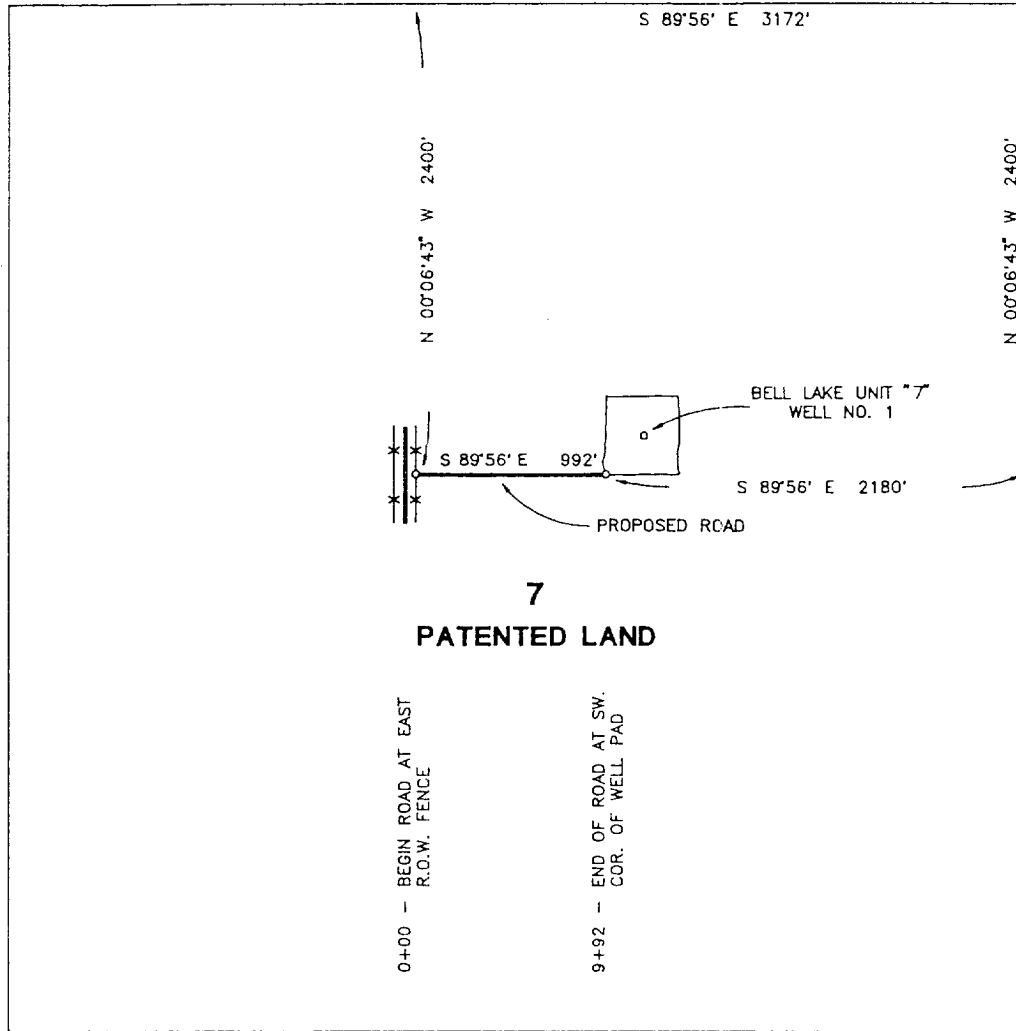
NO ALLOWABLE WILL BE ASSIGNED TO THIS COMPLETION UNTIL ALL INTERESTS HAVE BEEN CONSOLIDATED OR A NON-STANDARD UNIT HAS BEEN APPROVED BY THE DIVISION

<p>16</p> <p>2200'</p> <p>Y = 449533 X = 755690</p> <p>1980'</p>	<p><sup>17</sup> OPERATOR CERTIFICATION</p> <p><i>I hereby certify that the information contained herein is true and complete to the best of my knowledge and belief.</i></p> <p><i>Betty Gildon</i></p> <p>Signature Betty Gildon</p> <p>Printed Name Regulatory Analyst</p> <p>Title 7/18/96</p> <p>Date</p>
	<p><sup>18</sup> SURVEYOR CERTIFICATION</p> <p><i>I hereby certify that the well location shown on this plat was plotted from field notes of actual surveys made by me or under my supervision, and that the same is true and correct to best of my belief.</i></p> <p>APRIL 16, 1996</p> <p>Date of Survey</p> <p>Signature and Seal of Professional Surveyor</p> <p><i>Earl Foot</i></p> <p>8278</p> <p>Certificate Number 8278</p>

SECTION 7, TOWNSHIP 24 SOUTH, RANGE 34 EAST, N.M.P.M.

LEA COUNTY,

NEW MEXICO



CENTERLINE DESCRIPTION OF A PROPOSED ROAD

BEGINNING at a point on the fenced east boundary of an existing north-south road in Section 7, T-24-S, R-34-E, N.M.P.M., Lea County, New Mexico, from which point the northeast corner of Section 7 bears N 00° 06' 43" W, 2400.0 feet and S 89° 56' E, 3172.0 feet;

THENCE S 89° 56' E, with the centerline of proposed road, 992 feet to the southwest corner of the 400 feet X 400 feet site for Bell Lake Unit "7" No. 1, for the end of this road, from which point the northeast corner of Section 7 bears S 89° 59' E, 2180.0 feet N 00° 06' 43" W, 2400.0 feet.

I hereby certify that this plat was prepared from an actual survey made on the ground and meets or exceeds all requirements for land surveys as specified by the state of New Mexico.

PROPOSED ROAD

**ENRON OIL AND GAS COMPANY**

Proposed Road to Bell Lake Unit "7" No. 1  
Section 7, T-24-S, R-34-E, NMPM  
Lea County, New Mexico

**WEST TEXAS CONSULTANTS, INC.**

ENGINEERS-PLANNERS-SURVEYORS

MIDLAND, TEXAS

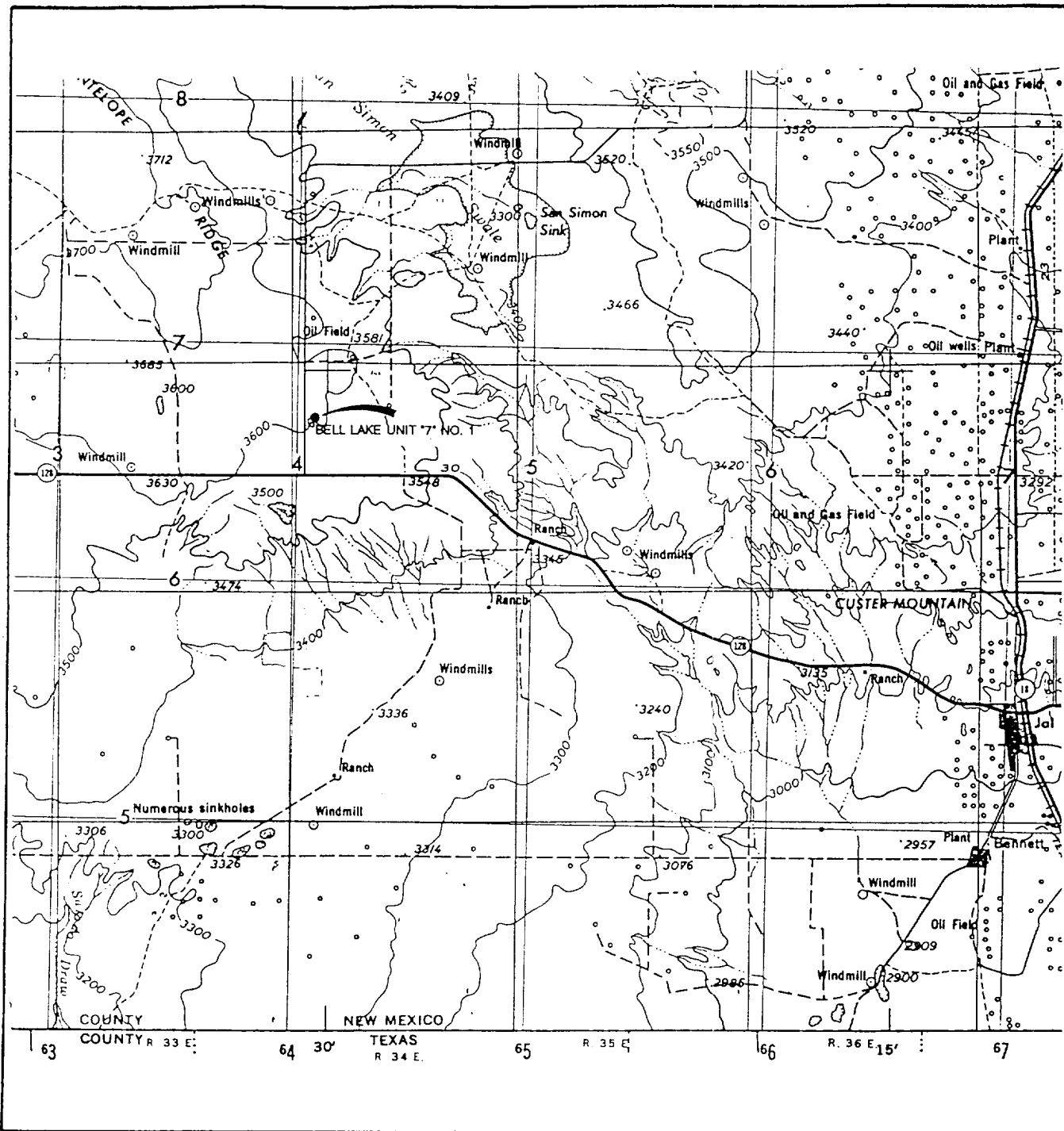
Survey Date: 4-16-96	Date: 4-17-96	Scale: 1" = 1000'
----------------------	---------------	-------------------

WTC No. 44449	Drawn By: MEB	Sheet 1 of 1
---------------	---------------	--------------



Earl Foote  
Registered Professional Surveyor  
New Mexico Certificate No. 8278

# VICINITY MAP



SCALE: 1" = 4 MILES

WTC 44449

SEC. 7 TWP. 24-S RGE. 34-E

SURVEY N.M.P.M

COUNTY LEA STATE NM

DESCRIPTION 2200' FNL & 1980' FEL

ELEVATION 3612'

OPERATOR ENRON OIL & GAS COMPANY

LEASE BELL LAKE UNIT '7' WELL NO. 1

**WEST TEXAS CONSULTANTS, INC.**

ENGINEERS-PLANNERS-SURVEYORS

MIDLAND, TEXAS

915-685-3800