

NOON

6 A.M.

6 P.M.

GRAPHIC CONTROLS CORPORATION
BUFFALO, NEW YORK



TEXACO

A.B. COATES #12

3-30-1983

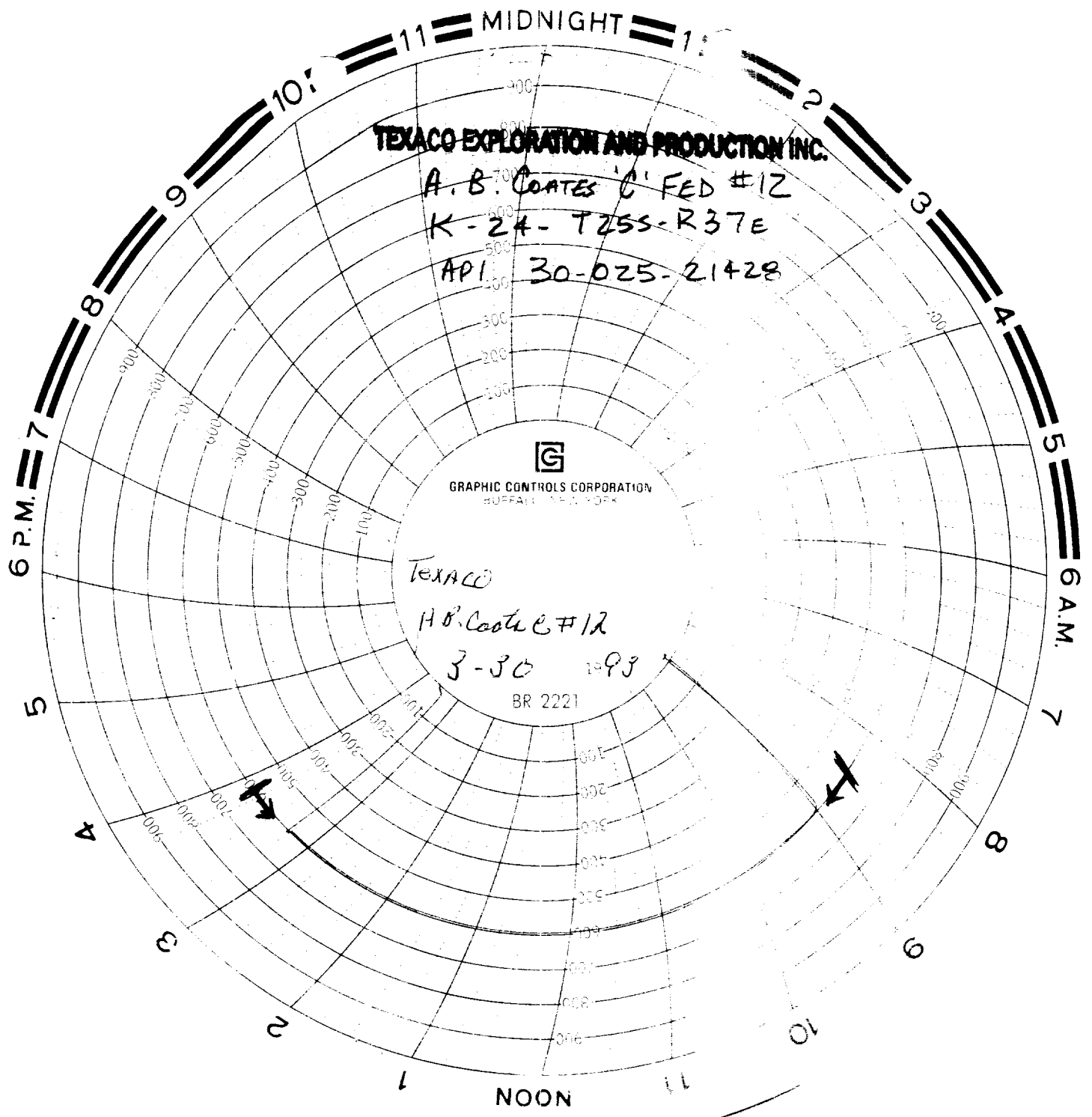
BR 2221

TEXACO EXPLORATION AND PRODUCTION INC.

A.B. COATES C. FED #12

K-24-1255-R37E

API 30-025-21428



TEXACO EXPLORATION AND PRODUCTION INC.

A.B. Coates 'C' FED #12

K-24-TZSS-R37E

API 30-025-21428



GRAPHIC CONTROLS CORPORATION
BUFFALO, N.Y.

TEXACO

H.B. Coates #12

3-30-93

BR 2221



100-104-100-100

JUN 15 1993
CCD HOBBS OFFICE