

SOUTHEAST NEW MEXICO PACKER LEAKAGE TEST

Operator Atlantic Richfield Company			Lease Wimberly WN			Well No. #5	
Location of Well	Unit C	Sec 24	Twp 25-S	Rge 37-E	County Lea		
Upper Compl	Name of Reservoir or Pool Justis-Blinebry		Type of Prod (Oil or Gas) Oil	Method of Prod Flow, Art Lift Gas Lift	Prod. Medium (Tbg or Csg) Tbg	Choke Size 3/4	
Lower Compl	Justis-Fusselman		Oil	Flow	Tbg	3/4	

FLOW TEST NO. 1

Both zones shut-in at (hour, date): 8:00 a.m. 2-9-70

Well opened at (hour, date): 8:00 a.m. 2-10-70

	Upper Completion	Lower Completion
--	------------------	------------------

Indicate by ( X ) the zone producing.....	X	
Pressure at beginning of test.....	346	62
Stabilized? (Yes or No).....	No	No
Maximum pressure during test.....	346	70
Minimum pressure during test.....	49	62
Pressure at conclusion of test.....	49	70
Pressure change during test (Maximum minus Minimum).....	-297	+8
Was pressure change an increase or a decrease?.....	decrease	increase

Well closed at (hour, date): 8:00 a.m. 2-11-70

	Total Time On Production	24 hours
--	--------------------------	----------

Oil Production During Test: 25 bbls; Grav. 38<sup>g</sup>; Gas Production During Test: 220 MCF; GOR 9009

Remarks \_\_\_\_\_

FLOW TEST NO. 2

Well opened at (hour, date): 8:00 a.m. 2-12-70

	Upper Completion	Lower Completion
--	------------------	------------------

Indicate by ( X ) the zone producing.....		X
Pressure at beginning of test.....	518	82
Stabilized? (Yes or No).....	No	No
Maximum pressure during test.....	535	82
Minimum pressure during test.....	518	40
Pressure at conclusion of test.....	535	40
Pressure change during test (Maximum minus Minimum).....	+17	-42
Was pressure change an increase or a decrease?.....	increase	decrease

Well closed at (hour, date): 8:00 a.m. 2-13-70

	Total time on Production	24 hours
--	--------------------------	----------

Oil Production During Test: 0 bbls; Grav. 39<sup>g</sup>; Gas Production During Test: 0 MCF; GOR 0

Remarks \_\_\_\_\_

I hereby certify that the information herein contained is true and complete to the best of my knowledge.

FEB 24 1970

Approved \_\_\_\_\_ 19 \_\_\_\_\_  
New Mexico Oil Conservation Commission

Operator Atlantic Richfield Company

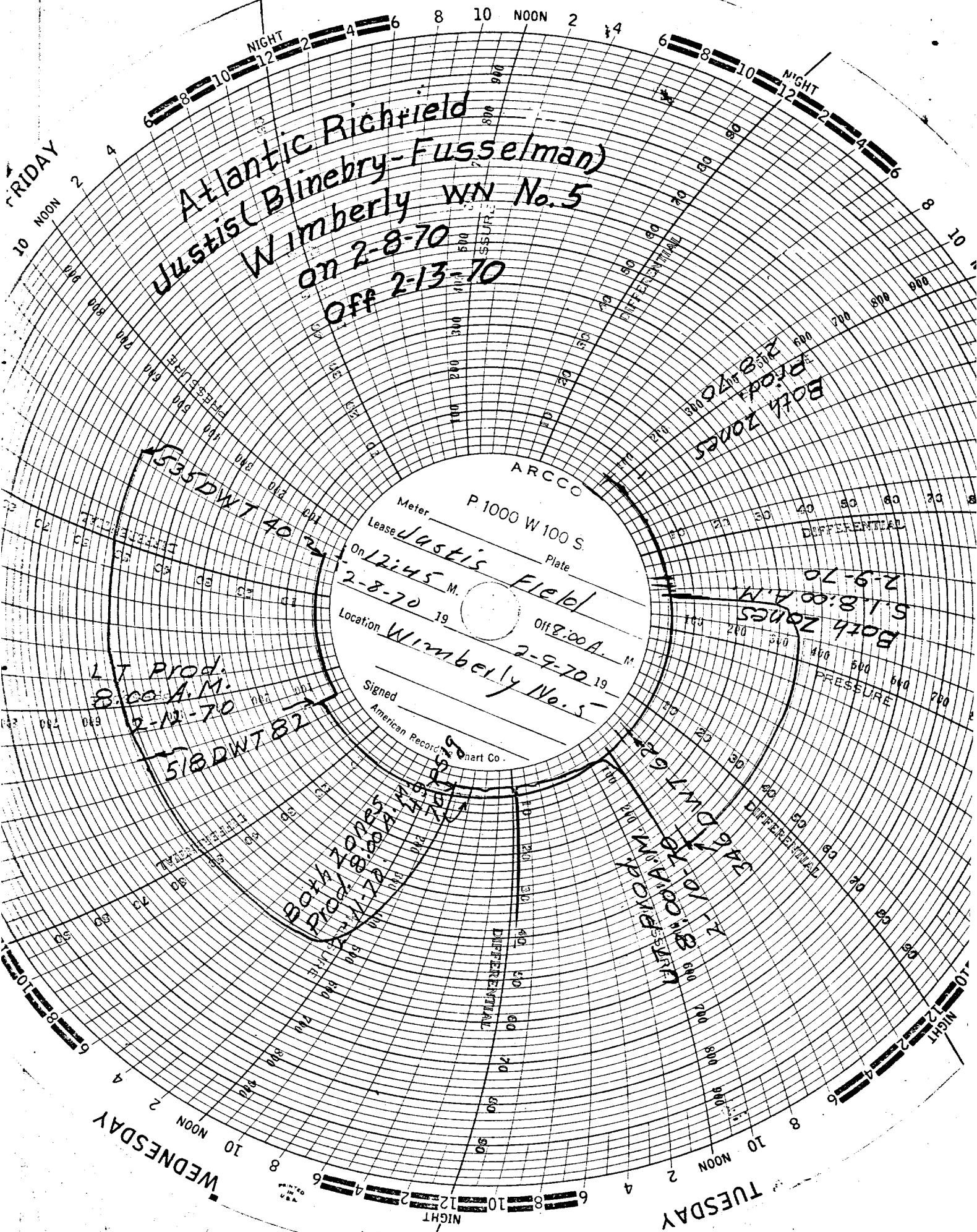
By A. D. Kloxin  
A. D. Kloxin

District Production & Maintenance

SUPERVISOR

SATURDAY

FRIDAY



Atlantic Richfield  
 Justis Blinbery-Fusselman  
 Wimberly WN No. 5  
 on 2-8-70  
 off 2-13-70

ARCCO  
 P. 1000 W 100 S  
 Meter \_\_\_\_\_  
 Plate \_\_\_\_\_  
 Lease \_\_\_\_\_  
 Jastis Field  
 On 12:45 M.  
 2-8-70  
 Off 2:00 A.M.  
 2-8-70  
 Location Wimberly No. 5  
 Signed \_\_\_\_\_  
 American Record Chart Co.

LT Prod.  
 8:00 A.M.  
 2-11-70

518 DWT 82

Both Zones  
 Prod. 2:00-4:00  
 2-11-70

Both Zones  
 Prod. 2:00-4:00  
 2-11-70

Both Zones  
 Prod. 2:18-4:40

Both Zones  
 5:18:00 A.M.  
 2-9-70

WEDNESDAY

TUESDAY