

GWFO

COUNTY LEA FIELD Jalmat STATE NM MN 11758
 OPR BURLESON & HUFF MAP
 2 Cook, W. N.
 Sec 28, T-25-S, R-37-E CO-ORD
 660' FSL, 660' FEL of Sec.

Re-Cmp 2-6-69	CLASS		EL	
	FORMATION	DATUM	FORMATION	DATUM
CSG & SX - TUBING				
10 3/4" at 165' w/125 sx				
7 5/8" at 1202' w/300 sx				
5 1/2" at 3124' w/225 sx				
LOGS EL GR RA IND HC A				
	TD 3284'; PBD 2950'			

IP (Yates) Perf 2567-2752' CAOF 2,099 MCFGPD

Distribution limited and publication prohibited by subscribers' agreement.
 Reproduction rights reserved by Williams & Lee Scouting Service, Inc.

CONT. PROP DEPTH 2752' TYPE WO
 DATE

F.R.C. 10-9-69
 PD 2752' WO (Yates)
 (Orig. Woodley Pet. Co. #2 William Cook, comp
 9-17-37 from OH 3124-3284', OTD 3284')
 10-6-69 TD 3284'; PBD 2950'; COMPLETE
 BP @ 2950'
 Perf @ 2567', 2571', 2577', 2602', 2628',
 2640', 2647', 2682', 2695', 2699', 2706',
 2738', 2742', 2752' w/1 SPI
 Acid (2567-2752') 1500 gals
 Frac (2567-2752') 10,000 gals wtr + 10,000# sd
 FOUR POINT GAUGES:
 Flwd 131 MCFGPD thru 3/32" chk, 60 min,
 TP 687#
 Flwd 530 MCFGPD thru 3/16" chk, 60 min,
 TP 648#

LEA Jalmat NM Sec 28, T25S, R37E
BURLESON & HUFF 2 Cook, W. N. Page #2

10-6-69 Continued
Flwd 1442 MCFGPD thru 3/8" chk, 60 min,
TP 456#
Flwd 1705 MCFGPD thru 1/2" chk, 60 min,
TP 300#
10-9-69 COMPLETION REPORTED

NEW MEXICO OIL CONSERVATION COMMISSION
WELL LOCATION AND ACREAGE DEDICATION PLAT

Form C-102
Supersedes C-128
Effective 1-1-65

All distances must be from the outer boundaries of the Section.

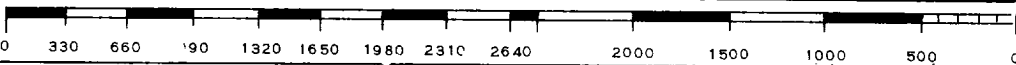
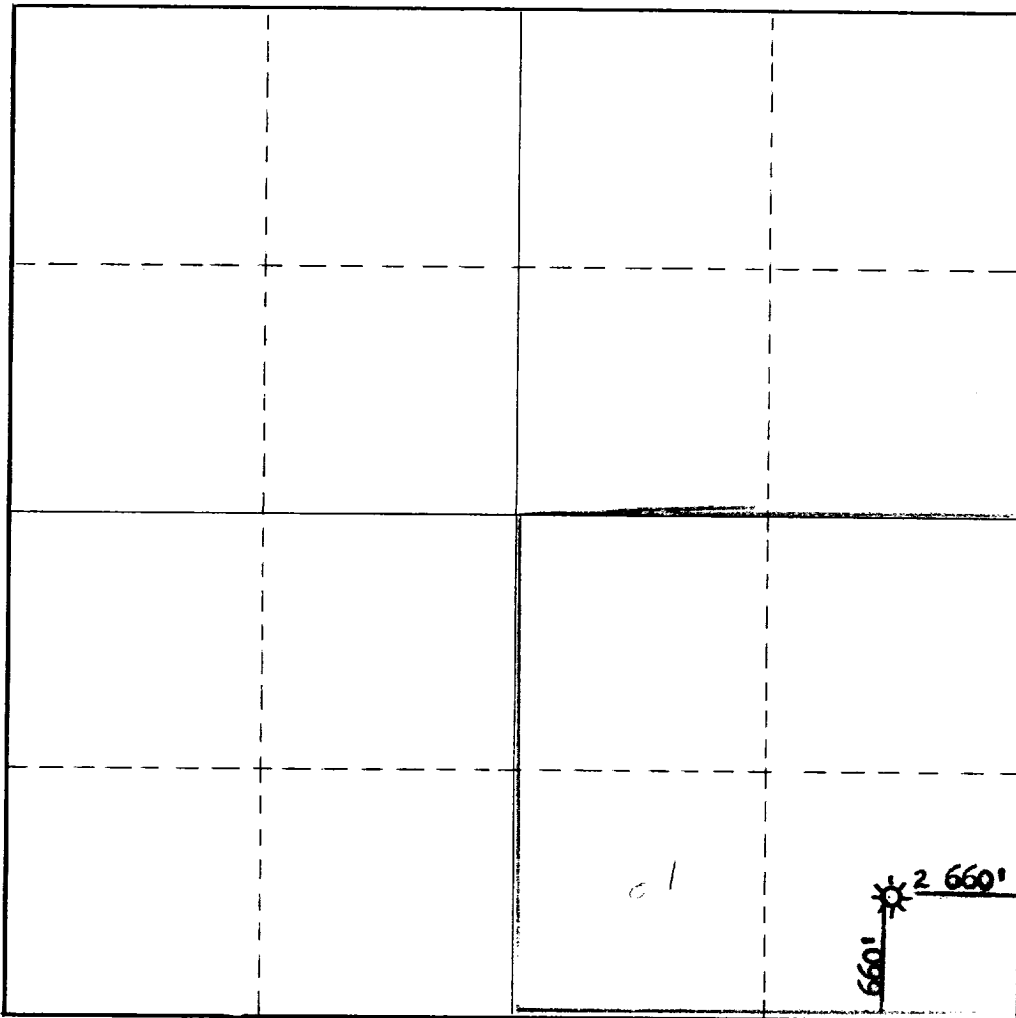
Operator Burleson & Huff			Lease M. Cook		Well No. 2
Unit Letter P	Section 28	Township 25-S	Range 37-E	County Lea	
Actual Footage Location of Well: 660 feet from the south line and 660 feet from the east line					
Ground Level Elev. 3010 G. L.	Producing Formation Yates	Pool Jalnet		Dedicated Acreage: 160 Acres	

- Outline the acreage dedicated to the subject well by colored pencil or hachure marks on the plat below.
- If more than one lease is dedicated to the well, outline each and identify the ownership thereof (both as to working interest and royalty).
- If more than one lease of different ownership is dedicated to the well, have the interests of all owners been consolidated by communitization, unitization, force-pooling, etc?

Yes No If answer is "yes," type of consolidation **Forced pooling**

If answer is "no," list the owners and tract descriptions which have actually been consolidated. (Use reverse side of this form if necessary.) _____

No allowable will be assigned to the well until all interests have been consolidated (by communitization, unitization, forced-pooling, or otherwise) or until a non-standard unit, eliminating such interests, has been approved by the Commission.



CERTIFICATION

I hereby certify that the information contained herein is true and complete to the best of my knowledge and belief.

Name: *[Signature]*

Position: **Partner**

Company: **Burleson & Huff**

Date: **Sept. 23, 1969**

I hereby certify that the well location shown on this plat was plotted from field notes of actual surveys made by me or under my supervision, and that the same is true and correct to the best of my knowledge and belief. **This well previously surveyed. See prior Form C-102 in well file.**

Date Surveyed: _____

Registered Professional Engineer and/or Land Surveyor

Certificate No. _____