

NO. OF COPIES RECEIVED	
DISTRIBUTION	
SANTA FE	
FILE	
U.S.G.S.	
LAND OFFICE	
OPERATOR	

NEW MEXICO OIL CONSERVATION COMMISSION

Form C-101
Revised 1-1-65

5A. Indicate Type of Lease
STATE FEE

5. State Oil & Gas Lease No.
B-1732

APPLICATION FOR PERMIT TO DRILL, DEEPEN, OR PLUG BACK

1a. Type of Work
DRILL DEEPEN PLUG BACK

b. Type of Well
OIL WELL GAS WELL OTHER
SINGLE ZONE MULTIPLE ZONE

2. Name of Operator
Amoco Production Company

3. Address of Operator
P.O. Drawer "A", Levelland, Texas 79336

4. Location of Well
UNIT LETTER B LOCATED 990 FEET FROM THE north LINE
AND 2310 FEET FROM THE east LINE OF SEC. 32 TWP. 24-S RGE. 38-E NMPM

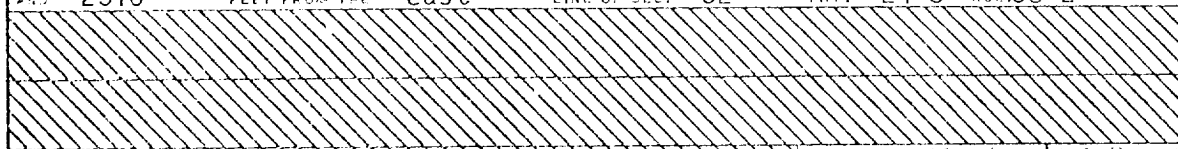
7. Unit Agreement Name

8. Farm or Lease Name
State Y

9. Well No.
16

10. Field and Pool, or Wildcat
Dollarhide Queen

12. County
Lea



19. Proposed Depth: 3850
19A. Formation: Queen
20. Rotary or C.T.: Rotary

21. Elevations (show whether DT, RT, etc.): 3184.1 GR
21A. Kind & Status Plug. Bond: Blanket-on file
21B. Drilling Contractor: Cactus
22. Approx. Date Work will start: 7-22-78

23. PROPOSED CASING AND CEMENT PROGRAM

SIZE OF HOLE	SIZE OF CASING	WEIGHT PER FOOT	SETTING DEPTH	SACKS OF CEMENT	EST. TOP
12 1/4"	8 5/8"	24#	1200	Circulate	Surface
7 7/8"	5 1/2"	15.5#, 17#	3850	Circulate	Surface

Propose to drill and equip Queen well at 3850'. Attempt completion by perforating and stimulating as necessary.

Mud Program 0' - 1200' - Native mud and fresh water.
1200' - 3850' - Brine water - commercial mud to maintain good hole conditions.

BOP Program attached.

IN ABOVE SPACE DESCRIBE PROPOSED PROGRAM; IF PROPOSAL IS TO DEEPEN OR PLUG BACK, GIVE DATA ON PRESENT PRODUCTIVE ZONE AND PROPOSED NEW PRODUCTIVE ZONE. GIVE BLOWOUT PREVENTER PROGRAM, IF ANY.

I hereby certify that the information above is true and complete to the best of my knowledge and belief.

Signed Ray W. Cox Title Administrative Supervisor Date July 7, 1978

(This space for State Use)
APPROVED BY [Signature] TITLE SUPERVISOR DISTRICT 1 DATE July 10 1978

CONDITIONS OF APPROVAL, IF ANY:
0+5-NMOCC, 4; 1-Div; 1-Susp; 1-RC

NEW MEXICO OIL CONSERVATION COMMISSION
WELL LOCATION AND ACREAGE DEDICATION PLAT

Form O-10
Superseded by O-10
Effective 1-1-64

All distances must be from the outer boundaries of the Section

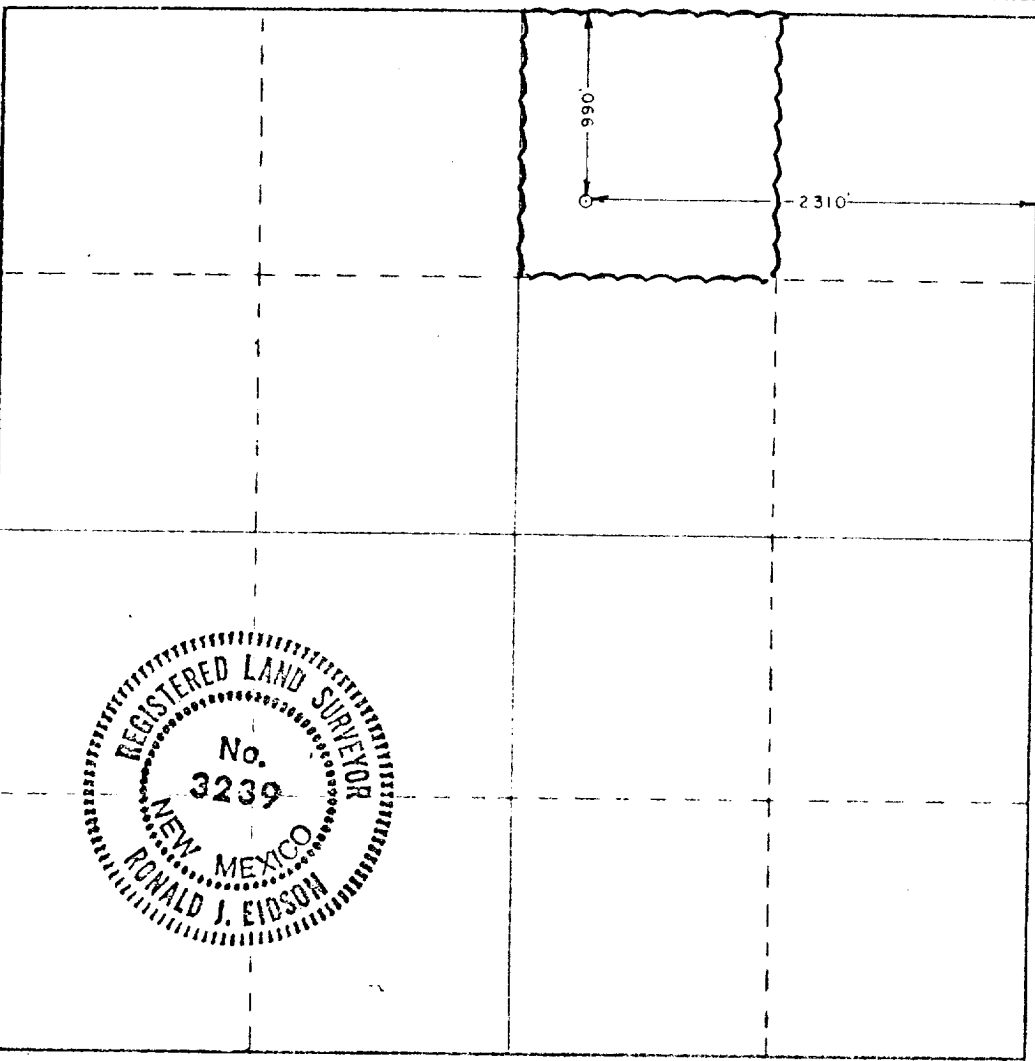
Operator AMOCO PRODUCTION Co.			Lease STATE Y			Well No. 16
Unit Letter B	Section 32	Township 24 SOUTH	Range 38 EAST	County LEA		
Actual Fracture Location of Well:						
990 feet from the NORTH line and		2310 feet from the EAST line				
Ground Elev. 3184.1	Producing Formation QUEEN	Pool DOLLARHIDE	Dedicated Acreage 40 Acres			

- Outline the acreage dedicated to the subject well by colored pencil or hatchure marks on the plat below.
- If more than one lease is dedicated to the well, outline each and identify the ownership thereof (both as to working interest and royalty).
- If more than one lease of different ownership is dedicated to the well, have the interests of all owners been consolidated by communitization, unitization, force-pooling, etc?

Yes No If answer is "yes," type of consolidation _____

If answer is "no," list the owners and tract descriptions which have actually been consolidated (Use reverse side of this form if necessary.) _____

No allowable will be assigned to the well until all interests have been consolidated (by communitization, unitization, forced-pooling, or otherwise) or until a non-standard unit, eliminating such interests, has been approved by the Commission.



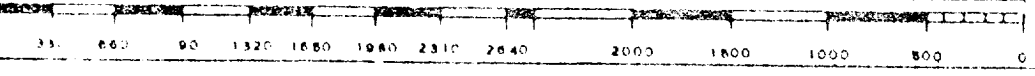
CERTIFICATION

I hereby certify that the information contained herein is true and complete to the best of my knowledge and belief

Name: *Ray Cox*
 Position: *Administrative Supervisor*
 Company: *Amoco Production Co.*
 Date: *7-7-78*

I hereby certify that the well location shown on this plat was plotted from field notes of actual surveys made by me or under my supervision, and that the same is true and correct to the best of my knowledge and belief

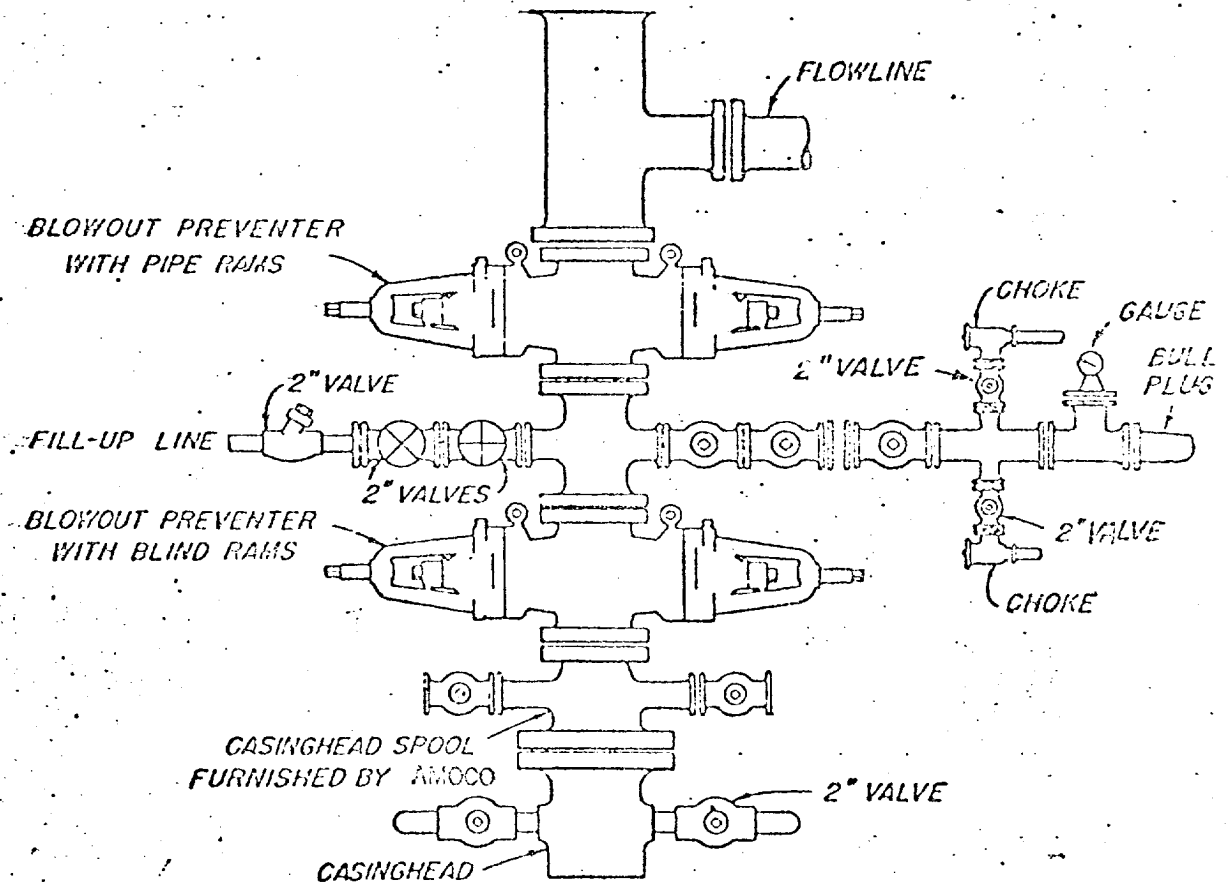
Date Surveyed: **JUNE 23, 1978**
 Registered Professional Engineer and of Land Surveyor
Ronald J. Eidson
 Certificate No. **John W. West 676**
Ronald J. Eidson 3239



ATTACHMENT "B"
NOTES

1. Blow-out preventers and master valve to be fluid operated and oil fittings must be in good condition, 3,000# W.P. (6,000 p.s.i. test), minimum.
2. Equipment through which bit must pass shall be as large as the inside diameter of the casing that is being drilled through.
3. Nipple above blow-out preventer shall be same size as casing being drilled through.
4. Kelly cock required, 3,000# W.P. (6,000 p.s.i. test) minimum.
5. OMSCO or comparable safety valve must be available on rig floor at all times with proper connection or sub, 3,000# W.P. (6,000 p.s.i. test), minimum.
6. Blow-out preventers and master valve while drilling intermediate hole to 6000' may be 2,000# W.P. (4,000 p.s.i. test), minimum.
7. Choke assembly, beyond second valve from cross, may be positioned (Optional) outside of derrick foundation.
8. Spool or cross may be eliminated if connections are available in the lower part of the blow-out preventer body.
9. Plug valves - gate valves are optional. Valves shown as 2" are minimum size.
10. Casing head and casing head spool, including attached valves, to be furnished by Amoco.
11. Rams in preventers will be installed as follows:

When drilling, use: Top Preventer - Drill pipe rams Bottom Preventer - Blind rams or master valve	When running casing, use: Top Preventer - Casing rams Bottom Preventer - Blind rams or master valve
---	---



BLOWOUT PREVENTER HOOK-UP

AMOCO PRODUCTION COMPANY

EXHIBIT D-1 MODIFIED

JUNE 1, 1962