

NEW MEXICO OIL CONSERVATION COMMISSION  
 WELL LOCATION AND ACREAGE DEDICATION PLAT

Form C-102  
 Supersedes C-128  
 Effective 1-1-65

All distances must be from the outer boundaries of the Section.

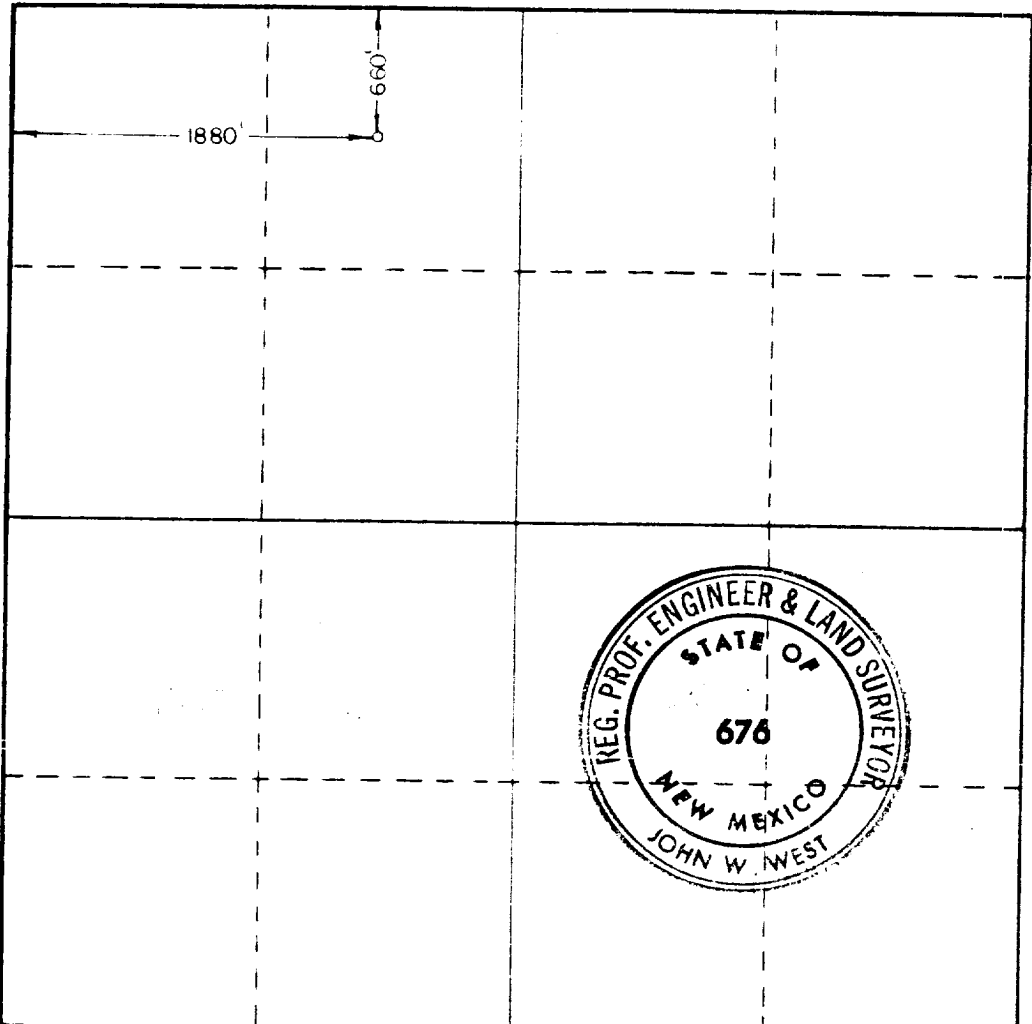
Operator <del>ING OIL COMPANY</del> Enron Oil & Gas Company		Lease VACA 13 FEDERAL		Well No. 1
Unit Letter C	Section 13	Township 25 South	Range 33 East	County Lea County
Actual Footage Location of Well: 660 feet from the North line and 1880 feet from the West line				
Ground Level Elev. 3359.6	Producing Formation Wolfcamp	Pool <del>Red Hills</del> Vaca Draw	Dedicated Acreage: 320 N/2 Acres	

- Outline the acreage dedicated to the subject well by colored pencil or hachure marks on the plat below.
- If more than one lease is dedicated to the well, outline each and identify the ownership thereof (both as to working interest and royalty).
- If more than one lease of different ownership is dedicated to the well, have the interests of all owners been consolidated by communitization, unitization, force-pooling, etc?

Yes  No If answer is "yes," type of consolidation \_\_\_\_\_

If answer is "no," list the owners and tract descriptions which have actually been consolidated. (Use reverse side of this form if necessary.) \_\_\_\_\_

No allowable will be assigned to the well until all interests have been consolidated (by communitization, unitization, forced-pooling, or otherwise) or until a non-standard unit, eliminating such interests, has been approved by the Commission.



CERTIFICATION

I hereby certify that the information contained herein is true and complete to the best of my knowledge and belief.

*Betty Gildon*

Name  
Betty Gildon  
Position  
Regulatory Analyst  
Company  
Enron Oil & Gas Company

Date  
6/10/92

I hereby certify that the well location shown on this plat was plotted from field notes of actual surveys made by me or under my supervision, and that the same is true and correct to the best of my knowledge and belief.

Date Surveyed  
May 12, 1983

Registered Professional Engineer and/or Land Surveyor

*John W. West*

Certificate No  
JOHN W. WEST NO. 676

