

OIL CONSERVATION DIVISION

P.O. Box 2088
 Santa Fe, New Mexico 87504-2088

DISTRICT I

P.O. Box 1980, Hobbs, NM 88240

DISTRICT II

P.O. Drawer DD, Artesia, NM 88210

DISTRICT III

1000 Rio Brazos Rd., Artec, NM 87410

WELL LOCATION AND ACREAGE DEDICATION PLAT

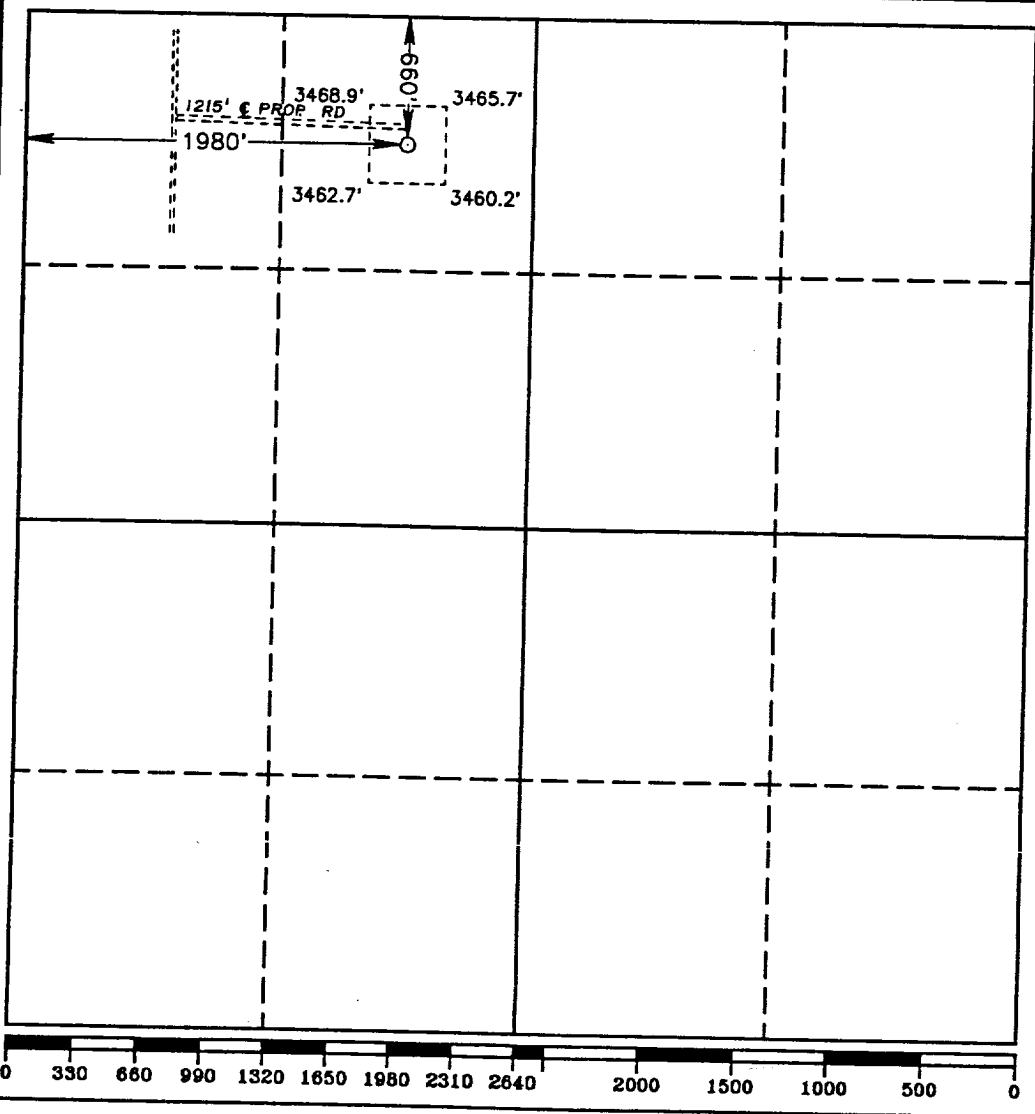
All Distances must be from the outer boundaries of the section

Operator ENRON OIL AND GAS CO.			Lease HALLWOOD "1" FEDERAL COM.		Well No. 1
Unit Letter C	Section 1	Township 25 SOUTH	Range 33 EAST	County LEA	
Actual Footage Location of Well: 660 feet from the NORTH line and 1980 feet from the WEST line					
Ground Level Elev. 3464.7'	Producing Formation MORROW	Pool Pitchfork Ranch		Dedicated Acreage: N/2 320 Acres	

- Outline the acreage dedicated to the subject well by colored pencil or hachure marks on the plat below.
- If more than one lease is dedicated to the well, outline each and identify the ownership thereof (both as to working interest and royalty).
- If more than one lease of different ownership is dedicated to the well, have the interest of all owners been consolidated by communitization, unitization, force-pooling, etc.?

Yes No If answer is "yes" type of consolidation Communitization

If answer is "no" list of owners and tract descriptions which have actually been consolidated. (Use reverse side of this form necessary.)
 No allowable will be assigned to the well unit all interests have been consolidated (by communitization, unitization, forced-pooling, otherwise) or until a non-standard unit, eliminating such interest, has been approved by the Division.



OPERATOR CERTIFICATION

I hereby certify the the information contained herein is true and complete to the best of my knowledge and belief.

Signature: *Betty Gildon*
 Printed Name: Betty Gildon
 Position: Enron Oil & Gas Company
 Company: Enron Oil & Gas Company
 Date: 5/20/92

SURVEYOR CERTIFICATION

I hereby certify that the well location shown on this plat was plotted from field notes of actual surveys made by me or under my supervision, and that the same is true and correct to the best of my knowledge and belief.

Date Surveyed: MAY 15, 1992

Signature & Seal of Professional Surveyor

Ronald W. Jones

REGISTERED LAND SURVEYOR
 NEW MEXICO
 Certificate No. JOHN W. WEST, 676
 RONALD W. JONES, 3239
 M. EARL JONES, 7977

ELF
ABOVE DATE DOES NOT
INDICATE WHEN
CONFIDENTIAL LOGS
WILL BE RELEASED