

Revised March 23, 2017

RECEIVED:	REVIEWER:	TYPE:	APP NO:
-----------	-----------	-------	---------

ABOVE THIS TABLE FOR OCD DIVISION USE ONLY

**NEW MEXICO OIL CONSERVATION DIVISION**  
 - Geological & Engineering Bureau -  
 1220 South St. Francis Drive, Santa Fe, NM 87505



**ADMINISTRATIVE APPLICATION CHECKLIST**

THIS CHECKLIST IS MANDATORY FOR ALL ADMINISTRATIVE APPLICATIONS FOR EXCEPTIONS TO DIVISION RULES AND REGULATIONS WHICH REQUIRE PROCESSING AT THE DIVISION LEVEL IN SANTA FE

Applicant: BTA OIL PRODUCERS, LLC

OGRID Number: 260297

Well Name: MESA 8105 1-12 FED 43H

API: 30-025-47153

Pool: JENNINGS-UPPER BONE SPRING

Pool Code: 97838

**SUBMIT ACCURATE AND COMPLETE INFORMATION REQUIRED TO PROCESS THE TYPE OF APPLICATION INDICATED BELOW**

**1) TYPE OF APPLICATION:** Check those which apply for [A]

A. Location - Spacing Unit - Simultaneous Dedication

☒ NSL☐ NSP (PROJECT AREA)☐ NSP (PRORATION UNIT)☐ SD

B. Check one only for [I] or [II]

[I] Commingling - Storage - Measurement

☐ DHC☐ CTB☐ PLC☐ PC☐ OLS☐ OLM

[II] Injection - Disposal - Pressure Increase - Enhanced Oil Recovery

☐ WFX☐ PMX☐ SWD☐ IPI☐ EOR☐ PPR

**2) NOTIFICATION REQUIRED TO:** Check those which apply.

A. ☒ Offset operators or lease holdersB. ☐ Royalty, overriding royalty owners, revenue ownersC. ☐ Application requires published noticeD. ☐ Notification and/or concurrent approval by SLOE. ☒ Notification and/or concurrent approval by BLMF. ☐ Surface ownerG. ☐ For all of the above, proof of notification or publication is attached, and/or,H. ☐ No notice required

**FOR OCD ONLY**

☐

Notice Complete

☐Application  
Content  
Complete

- 3) CERTIFICATION:** I hereby certify that the information submitted with this application for administrative approval is **accurate** and **complete** to the best of my knowledge. I also understand that **no action** will be taken on this application until the required information and notifications are submitted to the Division.

**Note: Statement must be completed by an individual with managerial and/or supervisory capacity.**

KATY REDDELL

Print or Type Name

03/09/2021

Date

432-682-3753

Phone Number

Digitally signed by Katy Reddell  
 DN: cn=Katy Reddell, o=BTA Oil Producers, Inc. ou, email=kreddell@btaoil.com, c=US  
 Date: 2021.03.09 15:04:51 -0600

Signature

KREDELL@BTAOIL.COM

e-mail Address



**BTA OIL PRODUCERS, LLC  
104 SOUTH PECOS STREET  
MIDLAND, TEXAS 79701-5021  
432-682-3753**

**March 10, 2021**

New Mexico Oil Conservation Division  
1220 South St. Francis Dr.  
Santa Fe, NM. 87505  
Attention: Leonard Lowe

Application for a Non-Standard Location

Mr. Lowe,

BTA Oil Producers, LLC respectfully requests administrative approval of a non-standard location on the MESA 8105 1-12 FED 43H well, API number 30-025-47153. Property Code 327174. The MESA 8105 1-12 FED 43H is completed in the Jennings Upper Bone Spring Pool. Pool Code 97838 which has special pool rules specifying the completed interval must be located 100' from the exterior boundary of the applicable spacing unit. The interval is as follows:

Surface location: 280' FNL 960 FWL In Unit D Section 1, 26S, 32E  
First Take Point: 499.5' FNL 339.3' FWL In Unit D Section 1, 26S, 32E  
Last Take Point: 76.7' FSL 332.1' FWL In Unit M Section 12, 26S, 32E  
Bottom Hole: 48.7' FSL 331.2' FWL In Unit M Section 12, 26S, 32E

The dedicated acreage for the HSU is 320 acres and lies within the W/2 of the W/2 of Sec. 1 and W/2 of the W/2 of Sec. 12.

The adjoining unit toward which the unorthodox location encroaches is located in T26-S R32-E in Section 13.

There was a calculation error in the completion process of this well. The error occurred when the third party calculated our last take point too close to the line and we did not catch it. We Planned our frac according to those calculations and completed the well.

The approval of this application will allow BTA Oil Producers, LLC to produce the oil and gas from this reservoir.

To support this request, the following information is attached to your e-mail for review:

1. C-102 plat for the drilled path and showing the Last Take Point Perforations.
2. A map of the unorthodox Horizontal Spacing Unit with affected area tracts identified.
3. List of affected offset parties. The date they were notified by mail and the tracking numbers.

Respectfully,

*Katy Reddell*

Katy Reddell  
Regulatory Analyst  
BTA Oil Producers, LLC

DISTRICT I  
1625 N. French Dr., Hobbs, NM 88240  
Phone: (575) 393-6161 Fax: (575) 393-0720

DISTRICT II  
811 S. First St., Artesia, NM 88210  
Phone: (575) 748-1283 Fax: (575) 748-9720

DISTRICT III  
1000 Rio Brazos Road, Aztec, NM 87410  
Phone: (505) 334-6178 Fax: (505) 334-6170

DISTRICT IV  
1220 S. St. Francis Dr., Santa Fe, NM 87505  
Phone: (505) 476-3460 Fax: (505) 476-3462

State of New Mexico  
Energy, Minerals & Natural Resources Department  
OIL CONSERVATION DIVISION  
1220 South St. Francis Dr.  
Santa Fe, New Mexico 87505

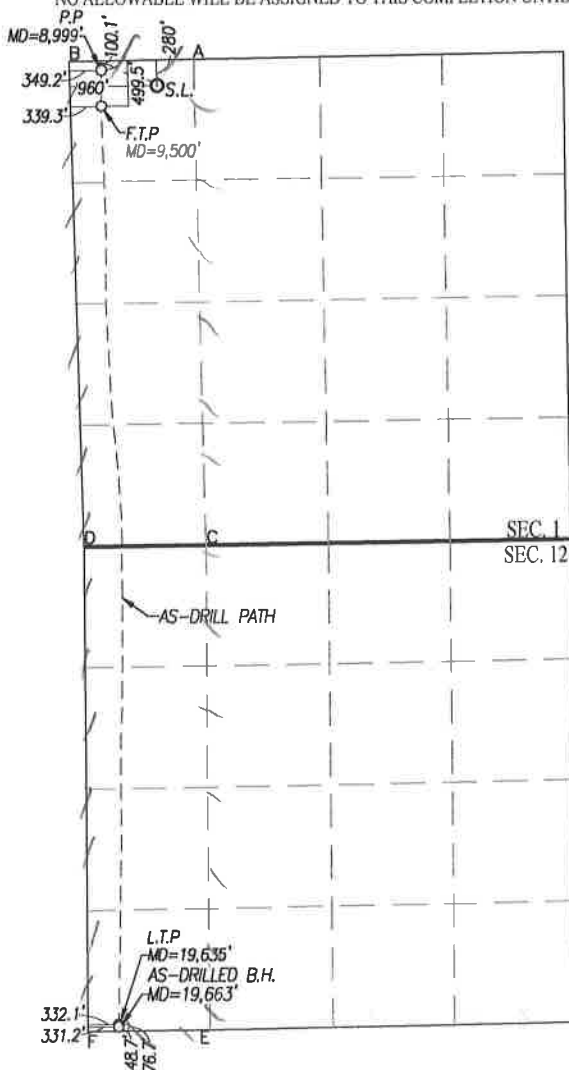
Form C-102  
Revised August 1, 2011  
Submit one copy to appropriate  
District Office

☐ AMENDED REPORT

WELL LOCATION AND ACREAGE DEDICATION PLAT

API Number 30-025-47153		Pool Code 97838		Pool Name JENNINGS-UPPER BONE SPRING					
Property Code 327174		Property Name MESA 8105 1-12 FED						Well Number 43H	
OGRID No. 260297		Operator Name BTA OIL PRODUCERS, LLC						Elevation 3336'	
Surface Location									
UL or lot No. D	Section I	Township 26-S	Range 32-E	Lot Idn	Feet from the 280	North/South line NORTH	Feet from the 960	East/West line WEST	County LEA
As-Drilled Bottom Hole Location If Different From Surface									
UL or lot No. M	Section 12	Township 26-S	Range 32-E	Lot Idn	Feet from the 48.7	North/South line SOUTH	Feet from the 331.2	East/West line WEST	County LEA
Penetration Point Location									
UL or lot No. D	Section I	Township 26-S	Range 32-E	Lot Idn	Feet from the 100.1	North/South line NORTH	Feet from the 349.2	East/West line WEST	County LEA
Dedicated Acres 320		Joint or Infill		Consolidation Code		Order No.			

NO ALLOWABLE WILL BE ASSIGNED TO THIS COMPLETION UNTIL ALL INTERESTS HAVE BEEN CONSOLIDATED OR A NON-STANDARD UNIT HAS BEEN APPROVED BY THE DIVISION



SCALE: 1"=2000'

<b>GEODEIC COORDINATES</b> NAD 83 NME SURFACE LOCATION Y= 393166.4 N X= 757869.0 E LAT.=32.078965° N LONG.=103.634225° W PENETRATION POINT NAD 83 NME Y= 393337.2 N X= 757253.3 E LAT.=32.079446° N LONG.=103.636210° W FIRST TAKE POINT NAD 83 NME Y= 392937.9 N X= 757254.4 E LAT.=32.078348° N LONG.=103.636214° W	<b>GEODEIC COORDINATES</b> NAD 27 NME SURFACE LOCATION Y= 393108.9 N X= 716682.5 E LAT.=32.078841° N LONG.=103.633754° W PENETRATION POINT NAD 27 NME Y= 393279.6 N X= 716066.7 E LAT.=32.079321° N LONG.=103.635738° W FIRST TAKE POINT NAD 27 NME Y= 392880.4 N X= 716067.9 E LAT.=32.078223° N LONG.=103.635743° W
---	---

CORNER COORDINATES TABLE

NAD 27 NME

A - Y= 393394.8 N, X= 717081.4 E
B - Y= 393374.5 N, X= 715714.9 E
C - Y= 388039.4 N, X= 717192.6 E
D - Y= 388025.8 N, X= 715861.6 E
E - Y= 382694.3 N, X= 717222.3 E
F - Y= 382677.2 N, X= 715890.1 E

CORNER COORDINATES TABLE

NAD 83 NME

A - Y= 393452.3 N, X= 758267.9 E
B - Y= 393432.1 N, X= 756901.4 E
C - Y= 388096.8 N, X= 758379.4 E
D - Y= 388083.2 N, X= 757048.4 E
E - Y= 382751.6 N, X= 758409.4 E
F - Y= 382734.4 N, X= 757077.1 E

LAST TAKE POINT

NAD 83 NME  
Y= 382815.4 N  
X= 757408.8 E  
LAT.=32.050521° N  
LONG.=103.635927° W

AS-DRILLED BOTTOM HOLE LOCATION

NAD 83 NME  
Y= 382787.4 N  
X= 757408.0 E  
LAT.=32.050444° N  
LONG.=103.635930° W

LAST TAKE POINT

NAD 27 NME  
Y= 382758.1 N  
X= 716221.8 E  
LAT.=32.050396° N  
LONG.=103.635457° W

AS-DRILLED BOTTOM HOLE LOCATION

NAD 27 NME  
Y= 382730.2 N  
X= 716221.0 E  
LAT.=32.050319° N  
LONG.=103.635460° W

NOTE: AS-DRILLED BOTTOM HOLE, LAST TAKE POINT, FIRST TAKE POINT AND PENETRATION POINT PLOTTED FROM DATA FURNISHED BY QES SURVEY REPORT ON JUNE 21, 2020.

OPERATOR CERTIFICATION

I hereby certify that the information herein is true and complete to the best of my knowledge and belief, and that this organization either owns a working interest or unleased mineral interest in the land including the proposed bottom hole location or has a right to drill this well at this location pursuant to a contract with an owner of such mineral or working interest, or to a voluntary pooling agreement or a compulsory pooling order heretofore entered by the division.

Katy Reddell 03/10/2021

Signature Date

KATY REDDELL

Printed Name

KREDDELL@BTAOIL.COM

E-mail Address

SURVEYOR CERTIFICATION

I hereby certify that the information shown on this plat was plotted from the best of my knowledge and belief, and that this organization either owns a working interest or unleased mineral interest in the land including the proposed bottom hole location or has a right to drill this well at this location pursuant to a contract with an owner of such mineral or working interest, or to a voluntary pooling agreement or a compulsory pooling order heretofore entered by the division.

Date of Survey: 03/10/2021

Signature: Gary G. Eidson

Seal of Professional Surveyor: 12641

Certificate Number: Gary G. Eidson 12641

Ronald J. Eidson 3239

ACK REL W.O.:19110918 JWSC W.O.: 21.13.0082

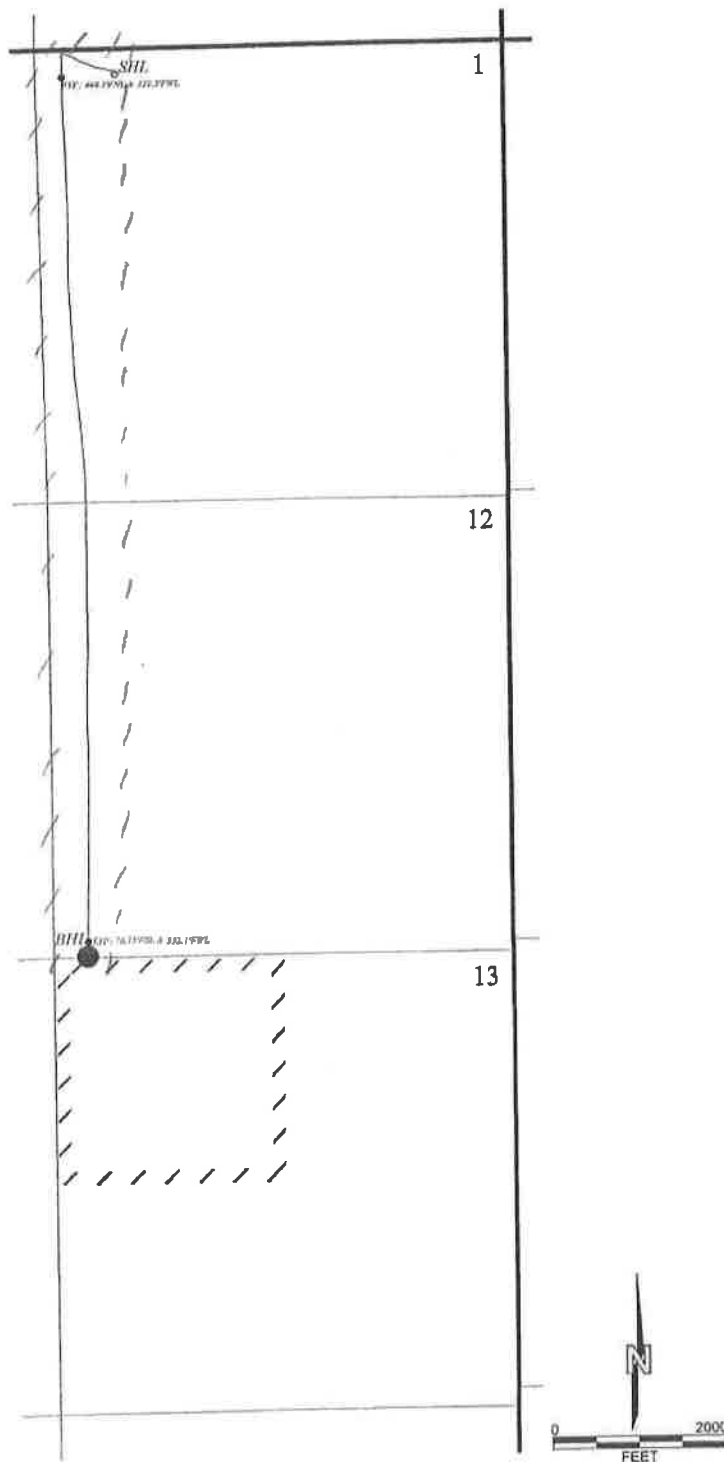
**BTA Oil Producers, LLC**

**Mesa 8105 1-12 Fed #43H**  
**SHL: Sec. 1 Twp. 26S Rng 32E**  
**BHL: Sec. 12 Twp. 26S Rng 32E**  
**Lea County, New Mexico**

Intended Spacing Unit:  
320 Acres



Operator of affected area:  
Chevron  
Sec. 13 & 14; 26S, 32E  
BLM Federal Acreage



<b><u>NSL/UNORTHODOX LOCATION APPLICATION 3/10/2021</u></b>				
<b><u>MESA 8105 1-12 FED 43H</u></b>				
TYPE	AFFECTE D PARTY	LOCATION	DATE LETTER SENT	CERTIFIED MAIL TRACKING NUMBER
Operator	Chevron	NW/4 SEC 13 T26S R32E	3/10/2021	7019 0700 0001 4223 4639
Federal	BLM	NW/4 SEC 13 T26S R32E	3/10/2021	7019 0700 0001 4223 4653

DISTRICT I  
1625 N. French Dr., Hobbs, NM 88240  
Phone: (575) 393-6161 Fax: (575) 393-9720

DISTRICT II  
811 S. First St., Artesia, NM 88210  
Phone: (575) 748-1283 Fax: (575) 748-9720

DISTRICT III  
1000 Rio Brazos Road, Aztec, NM 87410  
Phone: (505) 334-6178 Fax: (505) 334-6170

DISTRICT IV  
1220 S. St. Francis Dr., Santa Fe, NM 87505  
Phone: (505) 476-3460 Fax: (505) 476-3462

State of New Mexico  
Energy, Minerals & Natural Resources Department  
OIL CONSERVATION DIVISION  
1220 South St. Francis Dr.  
Santa Fe, New Mexico 87505

Revised August 1, 2011  
Submit one copy to appropriate  
District Office

☐ AMENDED REPORT

# WELL LOCATION AND ACREAGE DEDICATION PLAT

API Number <b>30-025-47153</b>	Pool Code <b>97838</b>	Pool Name <b>JENNINGS-UPPER BONE SPRING</b>
Property Code <b>327174</b>	Property Name <b>MESA 8105 1-12 FED</b>	Well Number <b>43H</b>
OGRID No. <b>260297</b>	Operator Name <b>BTA OIL PRODUCERS, LLC</b>	Elevation <b>3336'</b>

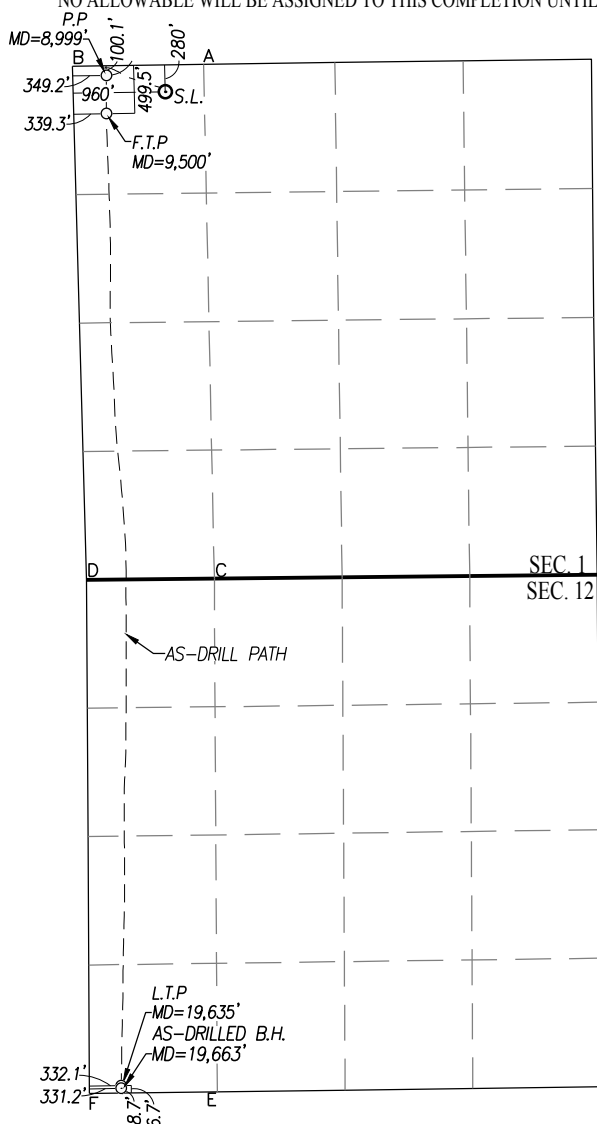
Surface Location									
UL or lot No.	Section	Township	Range	Lot Idn	Feet from the	North/South line	Feet from the	East/West line	County
<b>D</b>	<b>1</b>	<b>26-S</b>	<b>32-E</b>		<b>280</b>	<b>NORTH</b>	<b>960</b>	<b>WEST</b>	<b>LEA</b>

As-Drilled Bottom Hole Location If Different From Surface									
UL or lot No.	Section	Township	Range	Lot Idn	Feet from the	North/South line	Feet from the	East/West line	County
<b>M</b>	<b>12</b>	<b>26-S</b>	<b>32-E</b>		<b>48.7</b>	<b>SOUTH</b>	<b>331.2</b>	<b>WEST</b>	<b>LEA</b>

Penetration Point Location									
UL or lot No.	Section	Township	Range	Lot Idn	Feet from the	North/South line	Feet from the	East/West line	County
<b>D</b>	<b>1</b>	<b>26-S</b>	<b>32-E</b>		<b>100.1</b>	<b>NORTH</b>	<b>349.2</b>	<b>WEST</b>	<b>LEA</b>

Dedicated Acres	Joint or Infill	Consolidation Code	Order No.
<b>320</b>			

NO ALLOWABLE WILL BE ASSIGNED TO THIS COMPLETION UNTIL ALL INTERESTS HAVE BEEN CONSOLIDATED OR A NON-STANDARD UNIT HAS BEEN APPROVED BY THE DIVISION



SCALE: 1"=2000'

GEODETIC COORDINATES	GEODETIC COORDINATES
NAD 83 NME	NAD 27 NME
SURFACE LOCATION	SURFACE LOCATION
Y= 393166.4 N	Y= 393108.9 N
X= 757869.0 E	X= 716682.5 E
LAT.=32.078965° N	LAT.=32.078841° N
LONG.=103.634225° W	LONG.=103.633754° W
PENETRATION POINT	PENETRATION POINT
NAD 83 NME	NAD 27 NME
Y= 393337.2 N	Y= 393279.6 N
X= 757253.3 E	X= 716066.7 E
LAT.=32.079446° N	LAT.=32.079321° N
LONG.=103.636210° W	LONG.=103.635738° W
FIRST TAKE POINT	FIRST TAKE POINT
NAD 83 NME	NAD 27 NME
Y= 392937.9 N	Y= 392880.4 N
X= 757254.4 E	X= 716067.9 E
LAT.=32.078348° N	LAT.=32.078223° N
LONG.=103.636214° W	LONG.=103.635743° W

## CORNER COORDINATES TABLE

NAD 27 NME

A - Y= 393394.8 N, X= 717081.4 E
B - Y= 393374.5 N, X= 715714.9 E
C - Y= 388039.4 N, X= 717192.6 E
D - Y= 388025.8 N, X= 715861.6 E
E - Y= 382694.3 N, X= 717222.3 E
F - Y= 382677.2 N, X= 715890.1 E

## CORNER COORDINATES TABLE

NAD 83 NME

A - Y= 393452.3 N, X= 758267.9 E
B - Y= 393432.1 N, X= 756901.4 E
C - Y= 388096.8 N, X= 758379.4 E
D - Y= 388083.2 N, X= 757048.4 E
E - Y= 382751.6 N, X= 758409.4 E
F - Y= 382734.4 N, X= 757077.1 E

## LAST TAKE POINT

NAD 83 NME	NAD 27 NME
Y= 382815.4 N	Y= 382758.1 N
X= 757408.8 E	X= 716221.8 E
LAT.=32.050521° N	LAT.=32.050396° N
LONG.=103.635927° W	LONG.=103.635457° W

## AS-DRILLED BOTTOM HOLE LOCATION

NAD 83 NME	NAD 27 NME
Y= 382787.4 N	Y= 382730.2 N
X= 757408.0 E	X= 716221.0 E
LAT.=32.050444° N	LAT.=32.050319° N
LONG.=103.635930° W	LONG.=103.635460° W

NOTE: AS-DRILLED BOTTOM HOLE, LAST TAKE POINT, FIRST TAKE POINT AND PENETRATION POINT PLOTTED FROM DATA FURNISHED BY QES SURVEY REPORT ON JUNE 21, 2020.

## OPERATOR CERTIFICATION

I hereby certify that the information herein is true and complete to the best of my knowledge and belief, and that this organization either owns a working interest or unleased mineral interest in the land including the proposed bottom hole location or has a right to drill this well at this location pursuant to a contract with an owner of such mineral or working interest, or to a voluntary pooling agreement or a compulsory pooling order heretofore entered by the division.

Katy Reddell 03/10/2021

Signature

Date

KATY REDDELL

Printed Name

KREDDELL@BTAOIL.COM

E-mail Address

## SURVEYOR CERTIFICATION

I hereby certify that the well location shown on this plat was plotted from field notes of actual surveys made by me or under my supervision, and that the same is true and correct to the best of my belief.

Date of Survey

Signature & Seal of Professional Surveyor

GARY G. EIDSON  
12641  
03/01/2021  
Certificate Number Gary G. Eidson 12641  
Ronald J. Eidson 3239

ACK REL. W.O.:19110918 JWSC W.O.: 21.13.0082



<b><u>NSL/UNORTHODOX LOCATION APPLICATION 3/10/2021</u></b>				
<b><u>MESA 8105 1-12 FED 43H</u></b>				
TYPE	AFFECTE D PARTY	LOCATION	DATE LETTER SENT	CERTIFIED MAIL TRACKING NUMBER
Operator	Chevron	NW/4 SEC 13 T26S R32E	3/10/2021	7019 0700 0001 4223 4639
Federal	BLM	NW/4 SEC 13 T26S R32E	3/10/2021	7019 0700 0001 4223 4653



**BTA OIL PRODUCERS, LLC**  
**104 SOUTH PECOS STREET**  
**MIDLAND, TEXAS 79701-5021**  
**432-682-3753**

**March 10, 2021**

Chevron  
6301 Deauville Blvd  
Midland, TX. 79706

Application for a Non-Standard Location

To whom it may concern,

BTA Oil Producers, LLC is applying for administrative approval of Non-Standard Location.

Due to a calculation error, BTA Oil Producers, LLC is within the approved 100' footage for the end-line location on our Last Take Point for the MESA 8105 1-12 FED 43H well. The Oil Pool is Jennings-Upper Bone Spring, an oil pool. BTA is 76.7' off the south end line.

Please find enclosed the application for the Non-Standard Application.

If you have any questions or need additional information, please call me at 432-682-3753.

Please notify Leonard Lowe with the OCD-EMNRD at [leonard.lowe@state.nm.us](mailto:leonard.lowe@state.nm.us) 505-930-6717 if you have any objections to this application.

Respectfully,

*Katy Reddell*

---

Katy Reddell  
BTA Oil Producers, LLC





**BTA OIL PRODUCERS, LLC**  
**104 SOUTH PECOS STREET**  
**MIDLAND, TEXAS 79701-5021**  
**432-682-3753**

**March 10, 2021**

Bureau of Land Management Carlsbad  
620 E. Green Street  
Carlsbad, NM 88220-6262

Application for a Non-Standard Location

To whom it may concern,

BTA Oil Producers, LLC is applying for administrative approval for a Non-Standard Location.

Due to a calculation error, BTA Oil Producers, LLC is within the approved 100' footage for the end-line location on our Last Take Point for the MESA 8105 1-12 FED 43H well. The Oil Pool is Jennings-Upper Bone Spring, an oil pool. BTA is 76.7' off the south end line.

Please find enclosed the application for the Non-Standard Application.

If you have any questions or need additional information, please call me at 432-682-3753.

Please notify Leonard Lowe with the OCD-EMNRD at leonard.lowe@state.nm.us 505-930-6717 if you have any objections to this application.

Respectfully,

*Katy Reddell*

---

Katy Reddell  
BTA Oil Producers, LLC



**BTA OIL PRODUCERS, LLC  
104 SOUTH PECOS STREET  
MIDLAND, TEXAS 79701-5021  
432-682-3753**

**March 10, 2021**

New Mexico Oil Conservation Division  
1220 South St. Francis Dr.  
Santa Fe, NM. 87505  
Attention: Leonard Lowe

Application for a Non-Standard Location

Mr. Lowe,

BTA Oil Producers, LLC respectfully requests administrative approval of a non-standard location on the MESA 8105 1-12 FED 43H well, API number 30-025-47153. Property Code 327174. The MESA 8105 1-12 FED 43H is completed in the Jennings Upper Bone Spring Pool. Pool Code 97838 which has special pool rules specifying the completed interval must be located 100' from the exterior boundary of the applicable spacing unit. The interval is as follows:

Surface location: 280' FNL 960 FWL In Unit D Section 1, 26S, 32E  
First Take Point: 499.5' FNL 339.3' FWL In Unit D Section 1, 26S, 32E  
Last Take Point: 76.7' FSL 332.1' FWL In Unit M Section 12, 26S, 32E  
Bottom Hole: 48.7' FSL 331.2' FWL In Unit M Section 12, 26S, 32E

The adjoining unit toward which the unorthodox location encroaches is located in T26-S R32-E in Section 13.

There was a calculation error in the completion process of this well. The error occurred when the third party calculated our last take point too close to the line and we did not catch it. We Planned our frac according to those calculations and completed the well.

The approval of this application will allow BTA Oil Producers, LLC to produce the oil and gas from this reservoir.

To support this request, the following information is attached to your e-mail for review:

1. C-102 plat for the drilled path and showing the Last Take Point Perforations.
2. A map of the unorthodox Horizontal Spacing Unit with affected area tracts identified.
3. List of affected offset parties. The date they were notified by mail and the tracking numbers.

Respectfully,

*Katy Reddell*

Katy Reddell  
Regulatory Analyst  
BTA Oil Producers, LLC

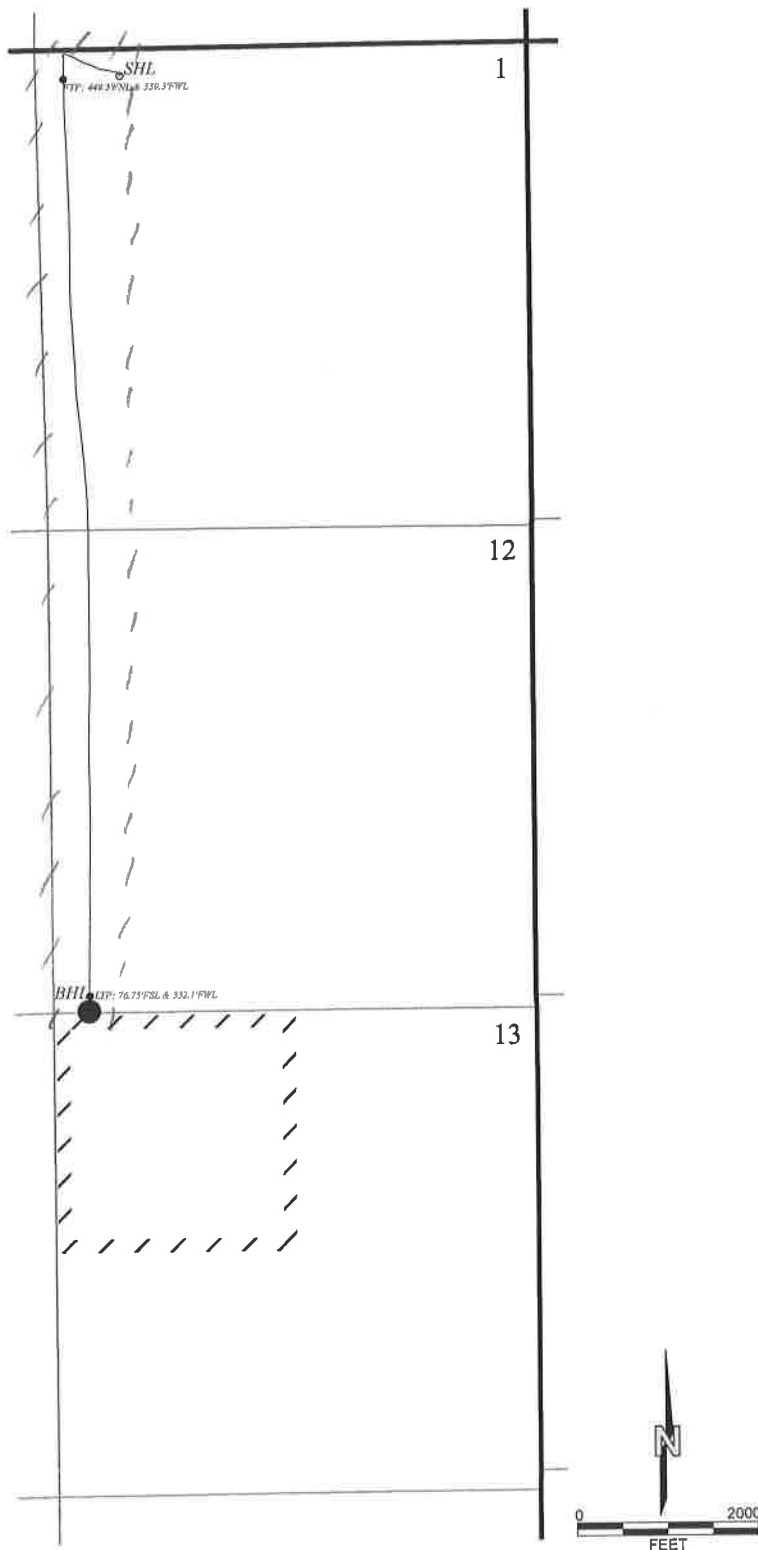
**BTA Oil Producers, LLC**

**Mesa 8105 1-12 Fed #43H**  
*SHL: Sec. 1 Twp. 26S Rng 32E*  
*BHL: Sec. 12 Twp. 26S Rng 32E*  
*Lea County, New Mexico*

Intended Spacing Unit:  
320 Acres



Operator of affected area:  
Chevron  
Sec. 13 & 14; 26S, 32E  
BLM Federal Acreage



**District I**  
1625 N. French Dr., Hobbs, NM 88240  
Phone:(575) 393-6161 Fax:(575) 393-0720  
**District II**  
811 S. First St., Artesia, NM 88210  
Phone:(575) 748-1283 Fax:(575) 748-9720  
**District III**  
1000 Rio Brazos Rd., Aztec, NM 87410  
Phone:(505) 334-6178 Fax:(505) 334-6170  
**District IV**  
1220 S. St Francis Dr., Santa Fe, NM 87505  
Phone:(505) 476-3470 Fax:(505) 476-3462

**State of New Mexico**  
**Energy, Minerals and Natural Resources**  
**Oil Conservation Division**  
**1220 S. St Francis Dr.**  
**Santa Fe, NM 87505**

CONDITIONS  
  
Action 20452

**CONDITIONS OF APPROVAL**

Operator:	BTA OIL PRODUCERS, LLC      104 S Pecos      Midland, TX79701			OGRID:	260297	Action Number:	20452	Action Type:	NSL
OCD Reviewer									Condition
Ilowe									None