

District I

1625 N. French Drive, Hobbs, NM 88240

District II

811 S. First St., Artesia, NM 88210

District III

1000 Rio Brazos Road, Aztec, NM 87410

District IV1220 S. St Francis Dr, Santa Fe, NM
87505

State of New Mexico

Energy, Minerals and Natural Resources Department

Form C-107-B

Revised August 1, 2011

OIL CONSERVATION DIVISION1220 S. St Francis Drive
Santa Fe, New Mexico 87505Submit the original
application to the Santa Fe
office with one copy to the
appropriate District Office.**APPLICATION FOR SURFACE COMMINGLING (DIVERSE OWNERSHIP)**

OPERATOR NAME: MACK ENERGY CORPORATION

OPERATOR ADDRESS: PO BOX 960 ARTESIA, NM 88211-0960

APPLICATION TYPE:

☐ Pool Commingling ☒ Lease Commingling ☐ Pool and Lease Commingling ☐ Off-Lease Storage and Measurement (Only if not Surface Commingled)LEASE TYPE: ☐ Fee ☐ State ☒ FederalIs this an Amendment to existing Order? ☐ Yes ☒ No If "Yes", please include the appropriate Order No. _____

Have the Bureau of Land Management (BLM) and State Land office (SLO) been notified in writing of the proposed commingling

X Yes ☐ No**(A) POOL COMMINGLING**

Please attach sheets with the following information

(1) Pool Names and Codes	Gravities / BTU of Non-Commingled Production	Calculated Gravities / BTU of Commingled Production		Calculated Value of Commingled Production	Volumes

(2) Are any wells producing at top allowables? ☐ Yes ☐ No(3) Has all interest owners been notified by certified mail of the proposed commingling? ☐ Yes ☐ No.(4) Measurement type: ☐ Metering ☐ Other (Specify)(5) Will commingling decrease the value of production? ☐ Yes ☐ No If "yes", describe why commingling should be approved**(B) LEASE COMMINGLING**

Please attach sheets with the following information

(1) Pool Name and Code. Round Tank; San Andres 52770

(2) Is all production from same source of supply? ☒ Yes ☐ No(3) Has all interest owners been notified by certified mail of the proposed commingling? ☒ Yes ☐ No(4) Measurement type: ☐ Metering ☒ Other (Specify) Periotic Well Test.**(C) POOL and LEASE COMMINGLING**

Please attach sheets with the following information

(1) Complete Sections A and E.

(D) OFF-LEASE STORAGE and MEASUREMENT

Please attached sheets with the following information

(1) Is all production from same source of supply? ☐ Yes ☐ No

(2) Include proof of notice to all interest owners.

(E) ADDITIONAL INFORMATION (for all application types)

Please attach sheets with the following information

(1) A schematic diagram of facility, including legal location.

(2) A plat with lease boundaries showing all well and facility locations. Include lease numbers if Federal or State lands are involved.

(3) Lease Names, Lease and Well Numbers, and API Numbers.

I hereby certify that the information above is true and complete to the best of my knowledge and belief.

SIGNATURE: 

TITLE: PRODUCTION CLERK

DATE: 3/11/2021

TYPE OR PRINT NAME Jerry W. Sherrell

TELEPHONE NO.: 575-748-1288

E-MAIL ADDRESS: jerrys@mcc.com



P.O. Box 960
Artesia, NM 88211-0960
Office (575) 748-1288
Fax (575) 746-9539

March 11, 2021

Oil Conservation Division
Attn: Dean McClure
1220 South St. Francis Drive
Santa Fe, NM 87505

Dear Sir or Madam:

Mack Energy Corporation is requesting administrative approval from the NMOCD for approval of CTB and Commingling of production of our Powell River Federal Com 1H, Unit P, Sec. 14 T15S R29E NMNM138832 & NMNM127444, CTB will be located at our Maple Ridge Federal 1H, Unit B, Sec. 23 T15S R29E. The oil production from the Powell River Federal Com 1H and Maple Ridge Federal 1H wells will be measured, stored and sold from the CTB location. Gas production will be transported through an approved pipeline to a sales point on DCP's gathering system in Unit O, Sec. 4 T16S R29E.

Allocation of production will be measured through well testing of individual wells on 7 day intervals. The CTB will be equipped with a test production train. Oil measured by tank gauging and gas measured using a Total Flow Meter. Water will be measured using a turbine meter.

All affected parties have been notified of this application via certified mail.

Should you have any questions please contact me @ 575-748-1288.

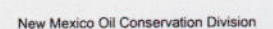
Sincerely,

A handwritten signature in blue ink that reads "Jerry W. Sherrell".

Jerry W. Sherrell
Production Clerk
jerrys@mec.com

JWS/

Enclosures



Production Phase

Sales Phase

Tank 1
F-1 Open
F-2 Closed
E-1 Open
D-1 Open
D-2 Closed
S-1 Closed
S-2 Closed

Tank 2
F-1 Closed
F-2 Open
E-1 Open
D-1 Closed
D-2 Open
S-1 Closed
S-2 Closed

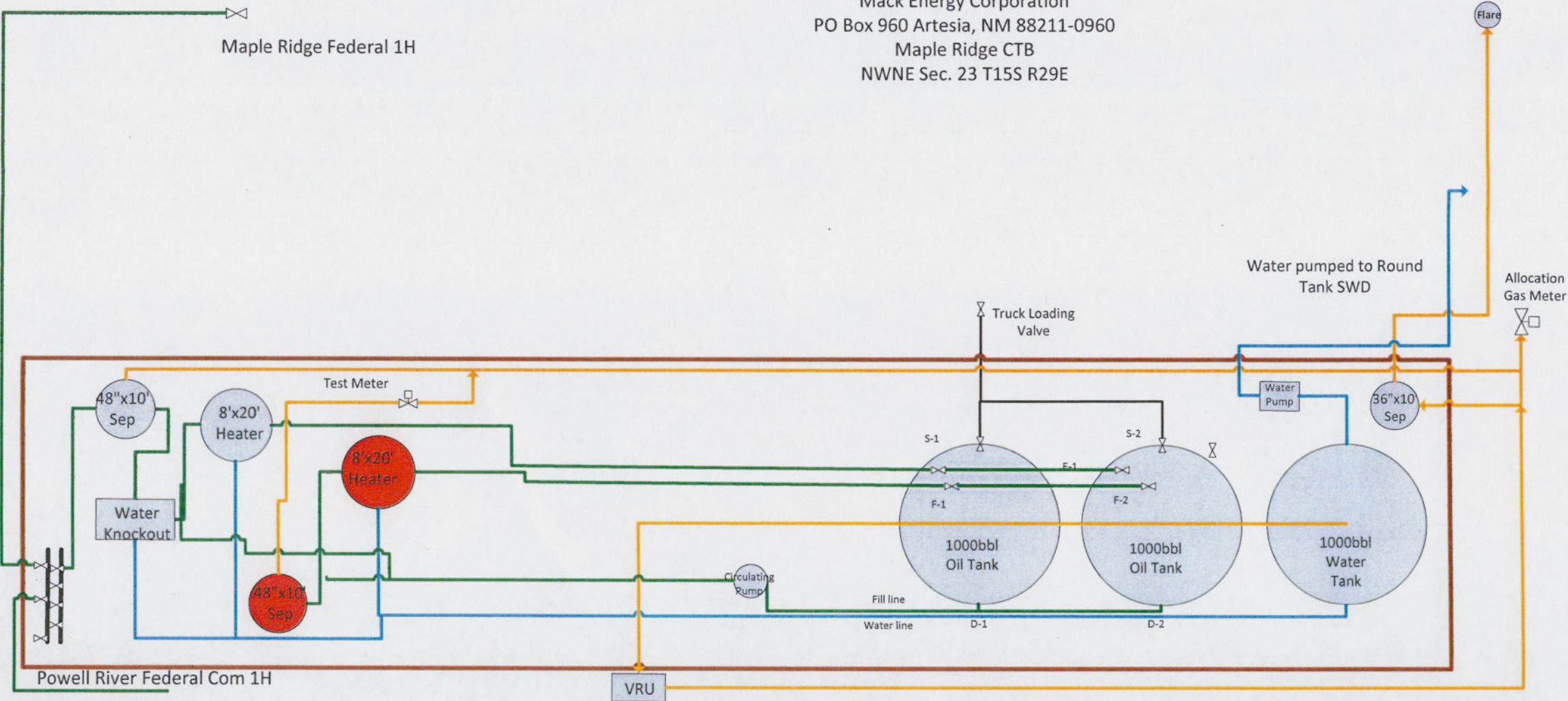
Tank 1
F-1 Closed
F-2 Open
E-1 Closed
D-1 Closed
D-2 Open
S-1 Open
S-2 Closed

Tank 2
F-1 Open
F-2 Closed
E-1 Closed
D-1 Open
D-2 Closed
S-1 Closed
S-2 Open

North



Mack Energy Corporation
PO Box 960 Artesia, NM 88211-0960
Maple Ridge CTB
NWNE Sec. 23 T15S R29E





P.O. Box 960
Artesia, NM 88211-0960
Office (575) 748-1288
Fax (575) 746-9539

March 15, 2021

VIA CERTIFIED MAIL 7019 1120 0000 0728 2970

Bureau of Land Management
2909 West 2nd Street
Roswell, NM 88202-2909

Dear Sir or Madam:

Mack Energy Corporation is requesting administrative approval from the NMOCD for approval of CTB and Commingling of production of our Powell River Federal Com 1H, Unit P, Sec. 14 T15S R29E NMNM138832 & NMNM127444, CTB will be located at our Maple Ridge Federal 1H, Unit B, Sec. 23 T15S R29E. The oil production from the Powell River Federal Com 1H and Maple Ridge Federal 1H wells will be measured, stored and sold from the CTB location. Gas production will be transported through an approved pipeline to a sales point on DCP's gathering system in Unit O, Sec. 4 T16S R29E.

Allocation of production will be measured through well testing of individual wells on 7 day intervals. The CTB will be equipped with a test production train. Oil measured by tank gauging and gas measured using a Total Flow Meter. Water will be measured using a turbine meter.

Should your company have any objection, it must be filed in writing within twenty (20) days from the date of this notice. The Division Director may approve the application to surface commingle if no objection has been made within the 20 days after the application has been received.

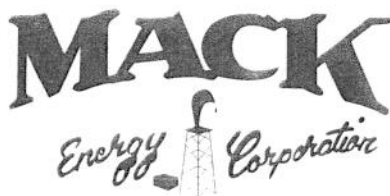
Sincerely,

A handwritten signature in cursive script, appearing to read "Jerry W. Sherrell".

Jerry W. Sherrell
Production Clerk
jerrys@mec.com

JWS/

Enclosures



P.O. Box 960
Artesia, NM 88211-0960
Office (575) 748-1288
Fax (575) 746-9539

March 15, 2021

VIA CERTIFIED MAIL 7019 1120 0000 0728 2963

Caza Petroleum Inc.
200 N. Loraine, Suite 1550
Midland, TX 79701

Dear Sir or Madam:

Mack Energy Corporation is requesting administrative approval from the NMOCDD for approval of CTB and Commingling of production of our Powell River Federal Com 1H, Unit P, Sec. 14 T15S R29E NMNM138832 & NMNM127444, CTB will be located at our Maple Ridge Federal 1H, Unit B, Sec. 23 T15S R29E. The oil production from the Powell River Federal Com 1H and Maple Ridge Federal 1H wells will be measured, stored and sold from the CTB location. Gas production will be transported through an approved pipeline to a sales point on DCP's gathering system in Unit O, Sec. 4 T16S R29E.

Allocation of production will be measured through well testing of individual wells on 7 day intervals. The CTB will be equipped with a test production train. Oil measured by tank gauging and gas measured using a Total Flow Meter. Water will be measured using a turbine meter.

Should your company have any objection, it must be filed in writing within twenty (20) days from the date of this notice. The Division Director may approve the application to surface commingle if no objection has been made within the 20 days after the application has been received.

Sincerely,

A handwritten signature in dark ink, appearing to read "Jerry W. Sherrell", is written over a horizontal line.

Jerry W. Sherrell
Production Clerk
jerrys@mec.com

JWS/

Enclosures



P.O. Box 960
Artesia, NM 88211-0960
Office (575) 748-1288
Fax (575) 746-9539

March 15, 2021

VIA CERTIFIED MAIL 7019 1640 0002 0377 7712

Doug Schutz
P.O. Box 973
Santa Fe, NM 87504-0973

Dear Sir or Madam:

Mack Energy Corporation is requesting administrative approval from the NMOCD for approval of CTB and Commingling of production of our Powell River Federal Com 1H, Unit P, Sec. 14 T15S R29E NMNM138832 & NMNM127444, CTB will be located at our Maple Ridge Federal 1H, Unit B, Sec. 23 T15S R29E. The oil production from the Powell River Federal Com 1H and Maple Ridge Federal 1H wells will be measured, stored and sold from the CTB location. Gas production will be transported through an approved pipeline to a sales point on DCP's gathering system in Unit O, Sec. 4 T16S R29E.

Allocation of production will be measured through well testing of individual wells on 7 day intervals. The CTB will be equipped with a test production train. Oil measured by tank gauging and gas measured using a Total Flow Meter. Water will be measured using a turbine meter.

Should your company have any objection, it must be filed in writing within twenty (20) days from the date of this notice. The Division Director may approve the application to surface commingle if no objection has been made within the 20 days after the application has been received.

Sincerely,

A handwritten signature in dark ink, appearing to read "Jerry W. Sherrell".

Jerry W. Sherrell
Production Clerk
jerrys@mec.com

JWS/

Enclosures



P.O. Box 960
Artesia, NM 88211-0960
Office (575) 748-1288
Fax (575) 746-9539

March 15, 2021

VIA CERTIFIED MAIL 7019 1640 0002 0377 7736

John & Theresa Hillman Family Properties
P.O. Box 50187
Midland, TX 79710

Dear Sir or Madam:

Mack Energy Corporation is requesting administrative approval from the NMOCD for approval of CTB and Commingling of production of our Powell River Federal Com 1H, Unit P, Sec. 14 T15S R29E NMNM138832 & NMNM127444, CTB will be located at our Maple Ridge Federal 1H, Unit B, Sec. 23 T15S R29E. The oil production from the Powell River Federal Com 1H and Maple Ridge Federal 1H wells will be measured, stored and sold from the CTB location. Gas production will be transported through an approved pipeline to a sales point on DCP's gathering system in Unit O, Sec. 4 T16S R29E.

Allocation of production will be measured through well testing of individual wells on 7 day intervals. The CTB will be equipped with a test production train. Oil measured by tank gauging and gas measured using a Total Flow Meter. Water will be measured using a turbine meter.

Should your company have any objection, it must be filed in writing within twenty (20) days from the date of this notice. The Division Director may approve the application to surface commingle if no objection has been made within the 20 days after the application has been received.

Sincerely,

A handwritten signature in dark ink, appearing to read "Jerry W. Sherrell".

Jerry W. Sherrell
Production Clerk
jerrys@mec.com

JWS/

Enclosures



P.O. Box 960
Artesia, NM 88211-0960
Office (575) 748-1288
Fax (575) 746-9539

March 15, 2021

VIA CERTIFIED MAIL 7019 1640 0002 0377 7743

Horton Royalty, LLC
P.O. Box 50938
Midland, TX 79710

Dear Sir or Madam:

Mack Energy Corporation is requesting administrative approval from the NMOCD for approval of CTB and Commingling of production of our Powell River Federal Com 1H, Unit P, Sec. 14 T15S R29E NMNM138832 & NMNM127444, CTB will be located at our Maple Ridge Federal 1H, Unit B, Sec. 23 T15S R29E. The oil production from the Powell River Federal Com 1H and Maple Ridge Federal 1H wells will be measured, stored and sold from the CTB location. Gas production will be transported through an approved pipeline to a sales point on DCP's gathering system in Unit O, Sec. 4 T16S R29E.

Allocation of production will be measured through well testing of individual wells on 7 day intervals. The CTB will be equipped with a test production train. Oil measured by tank gauging and gas measured using a Total Flow Meter. Water will be measured using a turbine meter.

Should your company have any objection, it must be filed in writing within twenty (20) days from the date of this notice. The Division Director may approve the application to surface commingle if no objection has been made within the 20 days after the application has been received.

Sincerely,

A handwritten signature in black ink, appearing to read "Jerry W. Sherrell".

Jerry W. Sherrell
Production Clerk
jerrys@mec.com

JWS/

Enclosures



P.O. Box 960
Artesia, NM 88211-0960
Office (575) 748-1288
Fax (575) 746-9539

March 15, 2021

VIA CERTIFIED MAIL 7019 1640 0002 0377 7729

Robert G. Shelton
P.O. Box 51410
Midland, TX 79720

Dear Sir or Madam:

Mack Energy Corporation is requesting administrative approval from the NMOCD for approval of CTB and Commingling of production of our Powell River Federal Com 1H, Unit P, Sec. 14 T15S R29E NMNM138832 & NMNM127444, CTB will be located at our Maple Ridge Federal 1H, Unit B, Sec. 23 T15S R29E. The oil production from the Powell River Federal Com 1H and Maple Ridge Federal 1H wells will be measured, stored and sold from the CTB location. Gas production will be transported through an approved pipeline to a sales point on DCP's gathering system in Unit O, Sec. 4 T16S R29E.

Allocation of production will be measured through well testing of individual wells on 7 day intervals. The CTB will be equipped with a test production train. Oil measured by tank gauging and gas measured using a Total Flow Meter. Water will be measured using a turbine meter.

Should your company have any objection, it must be filed in writing within twenty (20) days from the date of this notice. The Division Director may approve the application to surface commingle if no objection has been made within the 20 days after the application has been received.

Sincerely,

A handwritten signature in black ink, appearing to read "Jerry W. Sherrell".

Jerry W. Sherrell
Production Clerk
jerrys@mec.com

JWS/

Enclosures



P.O. Box 960
Artesia, NM 88211-0960
Office (575) 748-1288
Fax (575) 746-9539

March 15, 2021

VIA CERTIFIED MAIL 7019 1640 0002 0377 7705

Scott Wood
6013 Riverview Way
Houston, TX 77057

Dear Sir or Madam:

Mack Energy Corporation is requesting administrative approval from the NMOCD for approval of CTB and Commingling of production of our Powell River Federal Com 1H, Unit P, Sec. 14 T15S R29E NMNM138832 & NMNM127444, CTB will be located at our Maple Ridge Federal 1H, Unit B, Sec. 23 T15S R29E. The oil production from the Powell River Federal Com 1H and Maple Ridge Federal 1H wells will be measured, stored and sold from the CTB location. Gas production will be transported through an approved pipeline to a sales point on DCP's gathering system in Unit O, Sec. 4 T16S R29E.

Allocation of production will be measured through well testing of individual wells on 7 day intervals. The CTB will be equipped with a test production train. Oil measured by tank gauging and gas measured using a Total Flow Meter. Water will be measured using a turbine meter.

Should your company have any objection, it must be filed in writing within twenty (20) days from the date of this notice. The Division Director may approve the application to surface commingle if no objection has been made within the 20 days after the application has been received.

Sincerely,

A handwritten signature in dark ink, appearing to read "Jerry W. Sherrell".

Jerry W. Sherrell
Production Clerk
jerrys@mec.com

JWS/

Enclosures



P.O. Box 960
Artesia, NM 88211-0960
Office (575) 748-1288
Fax (575) 746-9539

March 15, 2021

VIA CERTIFIED MAIL 7019 1120 0000 0728 2956

Wise Oil & Gas No. 8 Ltd.
6851 NE Loop 820, Suite 200
North Richland Hills, TX 76180

Dear Sir or Madam:

Mack Energy Corporation is requesting administrative approval from the NMOCD for approval of CTB and Commingling of production of our Powell River Federal Com 1H, Unit P, Sec. 14 T15S R29E NMNM138832 & NMNM127444, CTB will be located at our Maple Ridge Federal 1H, Unit B, Sec. 23 T15S R29E. The oil production from the Powell River Federal Com 1H and Maple Ridge Federal 1H wells will be measured, stored and sold from the CTB location. Gas production will be transported through an approved pipeline to a sales point on DCP's gathering system in Unit O, Sec. 4 T16S R29E.

Allocation of production will be measured through well testing of individual wells on 7 day intervals. The CTB will be equipped with a test production train. Oil measured by tank gauging and gas measured using a Total Flow Meter. Water will be measured using a turbine meter.

Should your company have any objection, it must be filed in writing within twenty (20) days from the date of this notice. The Division Director may approve the application to surface commingle if no objection has been made within the 20 days after the application has been received.

Sincerely,

A handwritten signature in black ink, appearing to read "Jerry W. Sherrell".

Jerry W. Sherrell
Production Clerk
jerrys@mec.com

JWS/

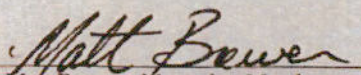
Enclosures

SIGNATURE PAGE

The undersigned approves of Mack Energy Corporation is requesting administrative approval from the NMOCD for approval of CTB and Commingling of production of our Powell River Federal Com 1H, Unit P, Sec. 14 T15S R29E NMNM138832 & NMNM127444, CTB will be located at our Maple Ridge Federal 1H, Unit B, Sec. 23 T15S R29E. The oil production from the Powell River Federal Com 1H and Maple Ridge Federal 1H wells will be measured stored and sold from the CTB location. Gas production will be transported through an approved pipeline to a sales point on DCP's gathering system in Unit O, Sec. 4 T16S R29E.


Allocation of production will be measured through well testing of individual wells on 7-day intervals. The CTB will be equipped with a test production train. Oil measured by tank gauging and gas measured using a Total Flow Meter. Water will be measured using a turbine meter.

SENDERO ENERGY LLC

By: 
Matt Brewer, Managing Member


Date: 3/11/2021

M SQUARED ENERGY LLC

By: 
W. Lee Livingston, Managing Member

Date: 3/11/2021

KATZ RESOURCES LLC

By: 
Charles Sadler, Managing Member

Date: 3/11/2021



P.O. Box 960
Artesia, NM 88211-0960
Office (575) 748-1288
Fax (575) 748-7374

August 1, 2016

Mr. Michael McMillan
Oil Conservation Division
1220 South St. Francis Dr.
Santa Fe, New Mexico 87505

RE: Mack Energy Corporation & Chase Affiliates

Dear Mr. McMillan:

Mack Energy Corporation is a Chase Family owned entity. The following Chase individuals or companies are all affiliates of Mack Energy Corporation and usually own an interest in wells drilled and/or operated by Mack Energy Corporation.

- Mack C. Chase Trust
- Robert C. Chase
- Richard L. Chase or Ventana Minerals LLC
- Gerene Dianne Chase Ferguson or DiaKan Minerals LLC
- Broken Arrow Royalties LLC
- Chase Oil Corporation

All of these family members and companies all office in the same building so notifications can be hand delivered; therefore we request that the certified mail process be waived when these parties are involved.

If you have any questions or need additional information please do not hesitate to contact me. Your assistance is greatly appreciated.

Sincerely,
Mack Energy Corporation

A handwritten signature in blue ink that reads "Staci Sanders".

Staci Sanders
Land Manager

/ss

MEMO

DATE: March 10, 2021

TO: NMOCD

FROM: Staci Sanders

RE: Approval for Central Tank Battery & Commingling

Maple Ridge Federal #1H

Unit B, Sec. 23, T15S, R29E

Powell River Federal Com #1H

Unit P, Sec. 14, T15S, R29E

Chaves County, New Mexico

Maple Ridge Central Tank Battery

Unit B, Sec. 23, T15S, R29E

Chaves County, New Mexico

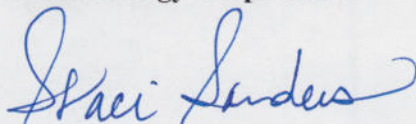
Mack Energy Corporation is requesting approval of the Maple Ridge Central Tank Battery located in Unit B of Sec. 23, T15S, R29E and the commingling of production at this facility. The production from the Maple Ridge Federal #1H well and the Powell River Federal Com #1H well will be commingled at this Central Tank Battery.

The interest owners in all leases involved have been notified (see the attached list of owners).

Please do not hesitate to contact me should you require any further information.

Sincerely,

Mack Energy Corporation



Staci Sanders

Land Manager

Powell River Federal Com #1H Leases (2 Total)**Federal Lease NMNM-138832: E/2 NE/4 of Sec. 23, T15S-R29E****Federal Lease NMNM127444: E/2 SE/4 of Sec. 23, T15S-R29E****Interest Owners:**

Office of Natural Resources Revenue P.O. Box 25627 Denver, CO 80225-0627	RI
Doug Schutz P.O. Box 973 Santa Fe, NM 87504-0973	ORRI
Robert G. Shelton P.O. Box 51410 Midland, TX 79720	ORRI
John & Theresa Hillman Family Properties P.O. Box 50187 Midland, TX 79710	ORRI
Horton Royalty, LLC P.O. Box 50938 Midland, TX 79710	ORRI
Broken Arrow Royalties LLC P.O. Box 960 Artesia, NM 88211	ORRI
Chase Oil Corporation P.O. Box 1767 Artesia, NM 88211	WI
Robert C. Chase P.O. Box 297 Artesia, NM 88211	WI
Ventana Minerals LLC P.O. Box 359 Artesia, NM 88211	WI
DiaKan Minerals LLC P.O. Box 693 Artesia, NM 88211	WI
Sendero Energy LLC P.O. Box 556 Artesia, NM 88211	WI
M Squared Energy LLC P.O. Box 211 Artesia, NM 88211	WI
Katz Resources LLC P.O. Box 7015 Goodyear, AZ 85338	WI

Maple Ridge Federal #1H Lease**Federal Lease NMNM-122614: W/2 E/2 of Sec. 14, T15S-R29E**

Interest Owners:

Office of Natural Resources Revenue P.O. Box 25627 Denver, CO 80225-0627	RI
Caza Petroleum Inc. 200 N. Loraine, Suite 1550 Midland, TX 79701	ORRI
Wise Oil & Gas No. 8 Ltd. 6851 NE Loop 820, Suite 200 North Richland Hills, TX 76180	ORRI
Scott Wood 6013 Riverview Way Houston, TX 77057	ORRI
Broken Arrow Royalties LLC P.O. Box 960 Artesia, NM 88211	ORRI
Chase Oil Corporation P.O. Box 1767 Artesia, NM 88211	WI
Robert C. Chase P.O. Box 297 Artesia, NM 88211	WI
Ventana Minerals LLC P.O. Box 359 Artesia, NM 88211	WI
DiaKan Minerals LLC P.O. Box 693 Artesia, NM 88211	WI
M Squared Energy LLC P.O. Box 211 Artesia, NM 88211	WI
Sendero Energy LLC P.O. Box 556 Artesia, NM 88211	WI

District I
1625 N. French Dr., Hobbs, NM 88240
Phone: (575) 393-6161 Fax: (575) 393-0720

District II
811 S. First St., Artesia, NM 88210
Phone: (575) 748-1283 Fax: (575) 748-9720

District III
1000 Rio Brazos Road, Aztec, NM 87410
Phone: (505) 334-6178 Fax: (505) 334-6170

District IV
1220 S. St. Francis Dr., Santa Fe, NM 87505
Phone: (505) 476-3460 Fax: (505) 476-3462

State of New Mexico
Energy, Minerals & Natural Resources Department
OIL CONSERVATION DIVISION
1220 South St. Francis Dr.
Santa Fe, NM 87505

Form C-102
Revised August 1, 2011
Submit one copy to appropriate
District Office
☐ AMENDED REPORT

WELL LOCATION AND ACREAGE DEDICATION PLAT

¹ API Number 30-005-64352	² Pool Code 52770	³ Pool Name Round Tank; San Andres
⁴ Property Code	⁵ Property Name POWELL RIVER FEDERAL COM	⁶ Well Number 1H
⁷ OGRID No. 13837	⁸ Operator Name MACK ENERGY CORPORATION	⁹ Elevation 3920.2

¹⁰ Surface Location

UL or lot no.	Section	Township	Range	Lot Idn	Feet from the	North/South line	Feet from the	East/West line	County
P	14	15 S	29 E		602	SOUTH	990	EAST	CHAVES

¹¹ Bottom Hole Location If Different From Surface

UL or lot no.	Section	Township	Range	Lot Idn	Feet from the	North/South line	Feet from the	East/West line	County
P	23	15 S	29 E		1	SOUTH	990	EAST	CHAVES

¹² Dedicated Acres	¹³ Joint or Infill	¹⁴ Consolidation Code	¹⁵ Order No.
160			

No allowable will be assigned to this completion until all interests have been consolidated or a non-standard unit has been approved by the division.

<p>NW CORNER SEC. 14 LAT. = 33.0232118°N LONG. = 104.0076016°W NMSP EAST (FT) N = 736136.21 E = 641173.28</p> <p>W/4 CORNER SEC. 14 LAT. = 33.0158685°N LONG. = 104.0077346°W NMSP EAST (FT) N = 733464.36 E = 641140.79</p> <p>SW CORNER SEC. 14 LAT. = 33.0087818°N LONG. = 104.0078257°W NMSP EAST (FT) N = 730885.92 E = 641120.85</p> <p>W/4 CORNER SEC. 23 LAT. = 33.0015079°N LONG. = 104.0077509°W NMSP EAST (FT) N = 728239.54 E = 641151.97</p> <p>SW CORNER SEC. 23 LAT. = 32.9942030°N LONG. = 104.0076851°W NMSP EAST (FT) N = 725581.88 E = 641180.37</p>		<p>N/4 CORNER SEC. 14 LAT. = 33.0232517°N LONG. = 103.9989893°W NMSP EAST (FT) N = 736159.01 E = 643812.88</p> <p>E/4 CORNER SEC. 14 LAT. = 33.0160343°N LONG. = 103.9904947°W NMSP EAST (FT) N = 733541.50 E = 646425.03</p> <p>SE CORNER SEC. 14 LAT. = 33.0087592°N LONG. = 103.9906199°W NMSP EAST (FT) N = 730894.48 E = 646395.26</p> <p>E/4 CORNER SEC. 23 LAT. = 33.0014847°N LONG. = 103.9906184°W NMSP EAST (FT) N = 728247.79 E = 646404.36</p> <p>SE CORNER SEC. 23 LAT. = 32.9942011°N LONG. = 103.9906126°W NMSP EAST (FT) N = 725597.82 E = 646414.79</p>		<p>¹⁷ OPERATOR CERTIFICATION</p> <p>I hereby certify that the information contained herein is true and complete to the best of my knowledge and belief, and that this organization either owns a working interest or unleased mineral interest in the land including the proposed bottom hole location or has a right to drill this well at this location pursuant to a contract with an owner of such a mineral or working interest, or to a voluntary pooling agreement or a compulsory pooling order heretofore entered by the division.</p> <p>Deana Weaver 2/4/2020</p> <p>Signature Date</p> <p>Deana Weaver</p> <p>Printed Name</p> <p>dweaver@mec.com</p> <p>E-mail Address</p>
<p>NOTE: LATITUDE AND LONGITUDE COORDINATES ARE SHOWN USING THE NORTH AMERICAN DATUM OF 1983 (NAD83) LISTED NEW MEXICO STATE PLANE EAST COORDINATES ARE GRID (NAD83). BASIS OF BEARING AND DISTANCES USED ARE NEW MEXICO STATE PLANE EAST COORDINATES MODIFIED TO THE SURFACE. VERTICAL DATUM NAVD83.</p> <p>POWELL RIVER FEDERAL COM 1H LAT. = 33.0104187°N (NAD83) LONG. = 103.9938205°W NMSP EAST (FT) N = 731495.07 E = 645412.20</p> <p>ELEV. = 3920.2'</p> <p>SHL 990'</p> <p>FTP 602'</p> <p>LAST TAKE POINT 100' FSL, 990' FEL LAT. = 32.9944762°N LONG. = 103.9938409°W NMSP EAST (FT) N = 725694.68 E = 645424.66</p> <p>BOTTOM OF HOLE LAT. = 32.9942041°N LONG. = 103.9938407°W NMSP EAST (FT) N = 725595.71 E = 645425.05</p> <p>S/4 CORNER SEC. 14 LAT. = 33.0087732°N LONG. = 103.9992221°W NMSP EAST (FT) N = 730891.08 E = 643758.27</p> <p>S/4 CORNER SEC. 23 LAT. = 32.9942016°N LONG. = 103.9991564°W NMSP EAST (FT) N = 725589.58 E = 643795.24</p> <p>BHL 990'</p> <p>LTP 602'</p>		<p>¹⁸ SURVEYOR CERTIFICATION</p> <p>I hereby certify that the well location shown on this plat was plotted from field notes of actual surveys made by me or under my supervision, and that the same is true and correct to the best of my belief.</p> <p>JANUARY 30, 2020</p> <p>Date of Survey</p> <p>William F. Jarman</p> <p>Signature and Seal of Professional Surveyor</p> <p>Certificate Number FTLNMF-CONCANTLAW-PL-12797</p> <p>SURVEY NO. 7815A</p>		

FLOWLINE PLAT

TWO 4" POLY SURFACE LINES FROM THE POWELL RIVER FEDERAL COM 1H
TO THE MAPLE RIDGE FEDERAL COM 1H

MACK ENERGY CORPORATION
CENTERLINE SURVEY OF A PIPELINE CROSSING
SECTIONS 14 & 23, TOWNSHIP 15 SOUTH, RANGE 29 EAST, N.M.P.M.
CHAVES COUNTY, STATE OF NEW MEXICO
JANUARY 30, 2020

SEC 14
T.15S., R.29E.
BLM

POWELL RIVER
FEDERAL COM 1H

STA. 0+00 B.O.L.

STA. 25+47.8 E.O.L.

MAPLE RIDGE
FEDERAL COM 1H

SEC 23
T.15S., R.29E.
BLM



SHEET: 6-6

MADRON SURVEYING, INC. 301 SOUTH CANAL (575) 234-3341 CARLSBAD, NEW MEXICO

SURVEY NO. 7926

District I

1675 N. French Dr., Hobbs, NM 88240
Phone: (505) 393-6161 Fax: (505) 393-0720

District II

811 S. First St., Artesia, NM 88210
Phone: (505) 743-1283 Fax: (505) 743-9720

District III

1000 Rio Brazos Road, Aztec, NM 87410
Phone: (505) 334-6178 Fax: (505) 334-6170

District IV

1220 S. St. Francis Dr., Santa Fe, NM 87505
Phone: (505) 476-3460 Fax: (505) 476-3462

State of New Mexico
Energy, Minerals & Natural Resources Department
OIL CONSERVATION DIVISION
1220 South St. Francis Dr.
Santa Fe, NM 87505

Form C-102

Revised August 1, 2011

Submit one copy to appropriate

District Office

☐ AMENDED REPORT

WELL LOCATION AND ACREAGE DEDICATION PLAT

¹ API Number 30-005-64324	² Pool Code 52770	³ Pool Name Round Tank; San Andres
⁴ Property Code 322879	⁵ Property Name MAPLE RIDGE FEDERAL	
⁶ OGRID No. 13837	⁷ Operator Name MACK ENERGY CORPORATION	
		⁸ Well Number 1H
		⁹ Elevation 3919.4

" Surface Location

UL or lot no.	Section	Township	Range	Lot Ida	Feet from the	North/South line	Feet from the	East/West line	County
B	23	15 S	29 E		565	NORTH	2285	EAST	CHAVES

" Bottom Hole Location If Different From Surface

UL or lot no.	Section	Township	Range	Lot Idn	Feet from the	North/South line	Feet from the	East/ West line	County
B	14	15 S	29 E		11	NORTH	2283	EAST	CHAVES

¹⁰ Dedicated Acres	¹¹ Joint or Infill	¹² Consolidation Code	¹³ Order No.
160			

No allowable will be assigned to this completion until all interests have been consolidated or a non-standard unit has been approved by the division.

<p>NW CORNER SEC. 14 LAT. = 33.0232118°N LONG. = 104.0076018°W NWSF EAST (FT) N = 736138.21 E = 641173.28</p> <p>W/4 CORNER SEC. 14 LAT. = 33.0158853°N LONG. = 104.0077346°W NWSF EAST (FT) N = 733464.36 E = 641140.79</p> <p>SECTION CORNER LAT. = 33.0057818°N LONG. = 104.0078257°W NWSF EAST (FT) N = 730893.92 E = 641120.85</p> <p>W/4 CORNER SEC. 23 LAT. = 33.0015079°N LONG. = 104.0077509°W NWSF EAST (FT) N = 728239.54 E = 641131.87</p> <p>SW CORNER SEC. 23 LAT. = 32.9942030°N LONG. = 104.0076851°W NWSF EAST (FT) N = 725581.88 E = 641180.36</p>		<p>N/4 CORNER SEC. 14 LAT. = 33.0232117°N LONG. = 103.9998993°W NWSF EAST (FT) N = 736159.01 E = 643812.88</p> <p>LAST TAKE POINT 127' FNL, 2281' FEL LAT. = 33.0228109°N LONG. = 103.9978102°W NWSF EAST (FT) N = 736038.18 E = 641174.67</p> <p>QUARTER CORNER LAT. = 33.0087732°N LONG. = 103.9992221°W NWSF EAST (FT) N = 730891.08 E = 643758.26</p> <p>MAPLE RIDGE FEDERAL 1H ELEV. = 3919.4' LAT. = 33.0072188°N (NAD83) LONG. = 103.9980714°W NWSF EAST (FT) N = 730328.69 E = 641112.81</p> <p>KICK OFF POINT 565' FNL, 2292' FEL LAT. = 33.0072164°N LONG. = 103.9880941°W NWSF EAST (FT) N = 730325.78 E = 641105.88</p> <p>S/4 CORNER SEC. 23 LAT. = 32.9942016°N LONG. = 103.9991564°W NWSF EAST (FT) N = 725589.58 E = 640795.24</p>		<p>NE CORNER SEC. 14 LAT. = 33.0233053°N LONG. = 103.9903623°W NWSF EAST (FT) N = 736187.03 E = 648456.81</p> <p>E/4 CORNER SEC. 14 LAT. = 33.0180344°N LONG. = 103.9904947°W NWSF EAST (FT) N = 733541.50 E = 648425.03</p> <p>SECTION CORNER LAT. = 33.0087593°N LONG. = 103.9906199°W NWSF EAST (FT) N = 730894.48 E = 648395.28</p> <p>E/4 CORNER SEC. 23 LAT. = 33.0014847°N LONG. = 103.9906184°W NWSF EAST (FT) N = 728247.79 E = 648404.36</p> <p>SE CORNER SEC. 23 LAT. = 32.9942011°N LONG. = 103.9906126°W NWSF EAST (FT) N = 725597.82 E = 648414.78</p>	
--	--	--	--	--	--

" OPERATOR CERTIFICATION

I hereby certify that the information contained herein is true and complete to the best of my knowledge and belief, and that this organization either owns a working interest or an undivided mineral interest in the land including the proposed bottom hole location or has a right to drill this well at this location pursuant to a contract with an owner of such a mineral or working interest, or to a voluntary pooling agreement or a compulsory pooling order heretofore entered by the division.

Deana Weaver 3.26.19
Signature Date

Deana Weaver
Printed Name

dweaver@mec.com
E-mail Address

"SURVEYOR CERTIFICATION

I hereby certify that the well location shown on this plat was plotted from field notes of actual surveys made by me or under my supervision, and that the same is true and correct to the best of my belief.

JULY 3, 2019
Date of Survey

William F. Jaramillo
Signature and Seal of Professional Surveyor

WILLIAM F. JARAMILLO, PLS 12797
Certificate Number

PROFESSIONAL SURVEYOR
SURVEY NO. 6324A

DEPARTMENT OF THE INTERIOR
BUREAU OF LAND MANAGEMENT
CASE RECORDATION
(MASS) Serial Register Page

Run Date/Time: 4/2/2021 11:41 AM

Page 1 Of 2

01 02-25-1920;041STAT0437;30USC181

Total Acres:
160.000Serial Number
NMNM 143144

Case Type 318310: O&G COMMUNITIZATION AGRMT

Commodity 459: OIL & GAS

Case Disposition: AUTHORIZED

Case File Juris: ROSWELL FIELD OFFICE

Serial Number: NMNM-- - 143144

Name & Address						Int Rel	% Interest
BLM ROSWELL FO	2909 W 2ND ST	ROSWELL	NM	88201		OFFICE OF RECORD	0.000000000
MACK ENERGY CORP	PO BOX 960	ARTESIA	NM	882110960		OPERATOR	100.000000000

Serial Number: NMNM-- - 143144

Mer	Twp	Rng	Sec	S	Type	Nr	Suff	Subdivision	District/ Field Office	County	Mgmt Agency
23	0150S	0290E	023	ALIQ				E2NE;	ROSWELL FIELD OFFICE	CHAVES	BUREAU OF LAND MGMT
23	0150S	0290E	023	ALIQ				E2SE;	ROSWELL FIELD OFFICE	CHAVES	BUREAU OF LAND MGMT

Relinquished/Withdrawn Lands

Serial Number: NMNM-- - 143144

				Serial Number: NMNM-- - 143144	
Act Date	Act Code	Action Txt	Action Remarks	Pending Off	
03/09/2021	387	CASE ESTABLISHED			
03/09/2021	501	REFERENCE NUMBER	POWELL RIV FED COM;		
03/09/2021	516	FORMATION	SAN ANDRES;		
03/09/2021	526	ACRES-FED INT 100%	160;		
03/09/2021	580	PROPOSAL RECEIVED	CA RECEIVED;		
03/30/2021	335	UNIT (GEO) REVIEW CMPLTD			
03/30/2021	974	AUTOMATED RECORD VERIF	MMS;		
05/01/2021	868	EFFECTIVE DATE			
05/01/2023	763	EXPIRES			

Line Number	Remark Text	Serial Number: NMNM-- - 143144		
0001	/A/RECAPULATION EFFECTIVE			
0002	TR# LEASE SERIOAL NO AC COMMITTED %INTEREST			
0003	1 NMNM138832 80.00 50.00%			
0004	2 NMNM127444 80.00 50.00%			
0005	TOTAL 160.00 100.00%			

NO WARRANTY IS MADE BY BLM FOR USE OF THE DATA FOR PURPOSES NOT INTENDED BY BLM

DEPARTMENT OF THE INTERIOR
BUREAU OF LAND MANAGEMENT
CASE RECORDATION
(MASS) Serial Register Page

Run Date/Time: 4/2/2021 11:41 AM

Page 2 Of 2

NO WARRANTY IS MADE BY BLM FOR USE OF THE DATA FOR PURPOSES NOT INTENDED BY BLM

Revised March 23, 2017

RECEIVED:	REVIEWER:	TYPE:	APP NO:
-----------	-----------	-------	---------

ABOVE THIS TABLE FOR OCD DIVISION USE ONLY

NEW MEXICO OIL CONSERVATION DIVISION
 - Geological & Engineering Bureau -
 1220 South St. Francis Drive, Santa Fe, NM 87505

**ADMINISTRATIVE APPLICATION CHECKLIST**

THIS CHECKLIST IS MANDATORY FOR ALL ADMINISTRATIVE APPLICATIONS FOR EXCEPTIONS TO DIVISION RULES AND
 REGULATIONS WHICH REQUIRE PROCESSING AT THE DIVISION LEVEL IN SANTA FE

Applicant: Mack Energy Corporation **OGRID Number:** 013837
Well Name: Powell River Federal Com 1H **API:** 30-005-64352
Pool: Round Tank; San Andres **Pool Code:** 52770

**SUBMIT ACCURATE AND COMPLETE INFORMATION REQUIRED TO PROCESS THE TYPE OF APPLICATION
 INDICATED BELOW**

1) TYPE OF APPLICATION: Check those which apply for [A]

A. Location - Spacing Unit - Simultaneous Dedication

☐ NSL ☐ NSP(PROJECT AREA) ☐ NSP(PRORATION UNIT) ☐ SD

B. Check one only for [I] or [II]

[I] Commingling - Storage - Measurement

☐ DHC ☒ CTB ☐ PLC ☐ PC ☐ OLS ☐ OLM

[II] Injection - Disposal - Pressure Increase - Enhanced Oil Recovery

☐ WFX ☐ PMX ☐ SWD ☐ IPI ☐ EOR ☐ PPR
2) NOTIFICATION REQUIRED TO: Check those which apply.

- A. ☒ Offset operators or lease holders
 B. ☒ Royalty, overriding royalty owners, revenue owners
 C. ☐ Application requires published notice
 D. ☐ Notification and/or concurrent approval by SLO
 E. ☒ Notification and/or concurrent approval by BLM
 F. ☐ Surface owner
 G. ☒ For all of the above, proof of notification or publication is attached, and/or,
 H. ☐ No notice required

FOR OCD ONLY

☐ Notice Complete
☐ Application
 Content
 Complete

3) CERTIFICATION: I hereby certify that the information submitted with this application for administrative approval is **accurate and complete** to the best of my knowledge. I also understand that **no action** will be taken on this application until the required information and notifications are submitted to the Division.

Note: Statement must be completed by an individual with managerial and/or supervisory capacity.

Jerry W. Sherrell

Print or Type Name

Signature

3/11/2021

Date

575-748-1288

Phone Number

 jerrys@mec.com
 e-mail Address

From: [Engineer, OCD, EMNRD](#)
To: [Jerry Sherrell](#)
Cc: [McClure, Dean, EMNRD](#); [Simmons, Kurt, EMNRD](#); [Bratcher, Mike, EMNRD](#); [Powell, Brandon, EMNRD](#); [lisa@rwbyram.com](#); [Glover, James](#); [kparadis@blm.gov](#); [Walls, Christopher](#)
Subject: Approved Administrative Order CTB-988
Date: Tuesday, April 6, 2021 1:33:57 PM
Attachments: [CTB988 Order.pdf](#)

NMOCD has issued Administrative Order CTB-988 which authorizes Mack Energy Corporation (13837) to surface commingle or off-lease measure, as applicable, the following wells:

Well API	Well Name	Location (NMPPM)	Pool Code
30-005-64352	Powell River Federal Com #1H	P-14-15S-29E	52770
30-005-64324	Maple Ridge Federal #1H	B-23-15S-29E	52770

The administrative order is attached to this email and can also be found online at OCD Imaging.

Please review the content of the order to ensure you are familiar with the authorities granted and any conditions of approval.

Dean McClure
Petroleum Engineer, Oil Conservation Division
New Mexico Energy, Minerals and Natural Resources Department
(505) 469-8211

**STATE OF NEW MEXICO
ENERGY, MINERALS AND NATURAL RESOURCES DEPARTMENT
OIL CONSERVATION DIVISION**

**APPLICATION FOR SURFACE COMMINGLING
SUBMITTED BY MACK ENERGY CORPORATION**

ORDER NO. CTB-988

ORDER

The Director of the New Mexico Oil Conservation Division (“OCD”), having considered the application and the recommendation of the OCD Engineering Bureau, issues the following Order.

FINDINGS OF FACT

1. Mack Energy Corporation (“Applicant”) submitted a complete application to surface commingle and off-lease measure the oil and gas production ("Application") from the pools, leases, and wells identified in Exhibit A.
2. To the extent that ownership is identical, Applicant submitted a certification by a licensed attorney or qualified petroleum landman that the ownership in the pools, leases, and wells to be commingled is identical as defined in 19.15.12.7(B) NMAC.
3. Applicant proposed a method to allocate the oil and gas production to the pools, leases, and wells to be commingled.
4. To the extent that ownership is diverse, Applicant provided notice of the Application to all persons owning an interest in the oil and gas production to be commingled, including the owners of royalty and overriding royalty interests, regardless of whether they have a right or option to take their interests in kind, and those persons either submitted a written waiver or did not file an objection to the Application.
5. Applicant provided notice of the Application to the Bureau of Land Management (“BLM”) or New Mexico State Land Office (“NMSLO”), as applicable.

CONCLUSIONS OF LAW

6. OCD has jurisdiction to issue this Order pursuant to the Oil and Gas Act, NMSA 1978, §§ 70-2-6, 70-2-11, 70-2-12, 70-2-16, and 70-2-17, and 19.15.12 NMAC.
7. Applicant satisfied the notice requirements for the Application in accordance with 19.15.12.10(A)(2), (C)(4)(c), and (C)(4)(e) NMAC, as applicable.
8. Applicant’s proposed method of allocation, as modified herein, complies with 19.15.12.10(B)(1) or (C)(1) NMAC, as applicable.
9. Commingling of oil and gas production from state, federal, or tribal leases shall not commence until approved by the BLM or NMSLO, as applicable, in accordance with 19.15.12.10(B)(3) and (C)(4)(h) NMAC.

10. By granting the Application with the conditions specified below, this Order prevents waste and protects correlative rights, public health, and the environment.

ORDER

1. Applicant is authorized to surface commingle and off-lease measure oil and gas production from the pools, leases, and wells identified in Exhibit A.
2. The allocation of oil and gas production shall be based on the production life of each well as measured for three periods: (a) the initial production period shall be measured from the first production until the earlier of either the peak production rate or thirty (30) days after the first production; (b) the plateau period shall be measured from the end of the initial production period to the peak decline rate; and (c) the decline period shall be measured from the end of the plateau period until the well is plugged and abandoned.

During the initial production period, the oil and gas production for each well identified in Exhibit A shall be allocated using a production curve calculated from a minimum of ten (10) well tests per month, except that any day in which a well test cannot achieve an accurate result due to a temporary change in oil and gas production shall not be included in the computation of time determining the well test schedule. The production curve shall be calculated by interpolating daily production for each day using the known daily production obtained by well tests and shall use a method of interpolation that is at minimum as accurate as maintaining a constant rate of change for each day's production between the known daily production values.

During the plateau period, the oil and gas production for each well identified in Exhibit A shall be allocated using a minimum of three (3) well tests per month.

During the decline period, the oil and gas production for each well identified in Exhibit A shall be allocated as follows: (a) a minimum of three (3) well tests per month when the decline rate is greater than twenty-two percent (22%) per month; (b) a minimum of two (2) well tests per month when the decline rate is between twenty-two percent (22%) and ten percent (10%) per month; and (c) a minimum of one (1) well test per month when the decline rate is less than ten percent (10%) per month.

Upon OCD's request, Applicant shall submit a Form C-103 to the OCD Engineering Bureau that contains the decline rate curve and other relevant information demonstrating the production life of a well.

Applicant shall conduct a well test by separating and metering the oil and gas production from that well for either (a) a minimum of twenty-four (24) consecutive hours; or (b) a combination of nonconsecutive periods that meet the following conditions: (i) each period shall be a minimum of six (6) hours; and (ii) the total duration of the nonconsecutive periods shall be a minimum of eighteen (18) hours.

The well test requirements of this Order shall be suspended for any well shut-in for a period that continues for more than fifteen (15) days until the well commences production.

3. Applicant shall measure the commingled oil at a central tank battery described in Exhibit A in accordance with 19.15.18.15 NMAC or 19.15.23.8 NMAC.
4. Applicant shall measure the commingled gas at a central delivery point or central tank battery described in Exhibit A in accordance with 19.15.19.9 NMAC, provided however that if the gas is flared, and regardless of whether OCD has granted an exception pursuant to 19.15.18.12(B) NMAC, Applicant shall report the gas in accordance with 19.15.18.12(F) NMAC.
5. Applicant shall calibrate the meters used to measure or allocate oil and gas production in accordance with 19.15.12.10(C)(2) NMAC.
6. If the commingling of oil and gas production from any pool, lease, or well reduces the value of the commingled oil and gas production to less than if it had remained segregated, no later than sixty (60) days after the decrease in value has occurred Applicant shall submit a new surface commingling application to OCD to amend this Order to remove the pool, lease, or well whose oil and gas production caused the decrease in value. If Applicant fails to submit a new application, this Order shall terminate on the following day, and if OCD denies the application, this Order shall terminate on the date of such action.
7. Applicant shall not commence commingling oil or gas production from state, federal, or tribal leases until approved by the BLM or NMSLO, as applicable.
8. OCD retains jurisdiction and reserves the right to modify or revoke this Order as it deems necessary to prevent waste or protect correlative rights, public health, or the environment.

**STATE OF NEW MEXICO
OIL CONSERVATION DIVISION**



**ADRIENNE SANDOVAL
DIRECTOR**

AS/dm

DATE: 4/06/2021

State of New Mexico
Energy, Minerals and Natural Resources Department

Exhibit A

Order: CTB-988

Operator: Mack Energy Corporation (13837)

Central Tank Battery: Maple Ridge Central Tank Battery

Central Tank Battery Location (NMPM): Unit B, Section 23, Township 15 South, Range 29 East

Gas Custody Transfer Meter Location (NMPM): Unit O, Section 4, Township 16 South, Range 29 East

Pools

Pool Name	Pool Code
ROUND TANK; SAN ANDRES	52770

Leases as defined in 19.15.12.7(C) NMAC

Lease	Location (NMPM)	
NMNM 122614	W/2 E/2	Sec 14-T15S-R29E
CA SA NMNM 143144	E/2 E/2	Sec 23-T15S-R29E

Wells

Well API	Well Name	Location (NMPM)	Pool Code	Train
30-005-64352	Powell River Federal Com #1H	P-14-15S-29E	52770	
30-005-64324	Maple Ridge Federal #1H	B-23-15S-29E	52770	

District I

1625 N. French Dr., Hobbs, NM 88240
Phone:(575) 393-6161 Fax:(575) 393-0720

District II

811 S. First St., Artesia, NM 88210
Phone:(575) 748-1283 Fax:(575) 748-9720

District III

1000 Rio Brazos Rd., Aztec, NM 87410
Phone:(505) 334-6178 Fax:(505) 334-6170

District IV

1220 S. St Francis Dr., Santa Fe, NM 87505
Phone:(505) 476-3470 Fax:(505) 476-3462

State of New Mexico
Energy, Minerals and Natural Resources
Oil Conservation Division
1220 S. St Francis Dr.
Santa Fe, NM 87505

CONDITIONS

Action 20819

CONDITIONS OF APPROVAL

Operator:	OGRID:	Action Number:	Action Type:
MACK ENERGY CORP 11344 Lovington Hwy	13837	20819	C-107B
P.O. Box 960 Artesia, NM88211-0960			

OCD Reviewer	Condition
dmcclure	Please review the content of the order to ensure you are familiar with the authorities granted and any conditions of approval.