

RECEIVED: <b>09/05/21</b>	REVIEWER: <b>LRL</b>	TYPE: <b>NSP</b>	APP NO: <b>pLEL2125054403</b>
---------------------------	----------------------	------------------	-------------------------------

ABOVE THIS TABLE FOR OCD DIVISION USE ONLY

**NEW MEXICO OIL CONSERVATION DIVISION**  
 - Geological & Engineering Bureau -  
 1220 South St. Francis Drive, Santa Fe, NM 87505



### ADMINISTRATIVE APPLICATION CHECKLIST

THIS CHECKLIST IS MANDATORY FOR ALL ADMINISTRATIVE APPLICATIONS FOR EXCEPTIONS TO DIVISION RULES AND REGULATIONS WHICH REQUIRE PROCESSING AT THE DIVISION LEVEL IN SANTA FE

**Applicant:** DJR Operating, LLC **OGRID Number:** 371838  
**Well Name:** Bisti #100H well **API:** pending  
**Pool:** Bisti Lower-Gallup (Oil) Pool & Basin Mancos (Gas) Pool **Pool Code:** 5890 & 97232

### SUBMIT ACCURATE AND COMPLETE INFORMATION REQUIRED TO PROCESS THE TYPE OF APPLICATION INDICATED BELOW

- 1) **TYPE OF APPLICATION:** Check those which apply for [A]
- A. Location – Spacing Unit – Simultaneous Dedication  
☐ NSL ☐ NSP (PROJECT AREA) ☒ NSP (PRORATION UNIT) ☐ SD
- B. Check one only for [ I ] or [ II ]
- [ I ] Commingling – Storage – Measurement  
☐ DHC ☐ CTB ☐ PLC ☐ PC ☐ OLS ☐ OLM
- [ II ] Injection – Disposal – Pressure Increase – Enhanced Oil Recovery  
☐ WFX ☐ PMX ☐ SWD ☐ IPI ☐ EOR ☐ PPR
- 2) **NOTIFICATION REQUIRED TO:** Check those which apply.
- A. ☒ Offset operators or lease holders  
 B. ☐ Royalty, overriding royalty owners, revenue owners  
 C. ☐ Application requires published notice  
 D. ☒ Notification and/or concurrent approval by SLO  
 E. ☐ Notification and/or concurrent approval by BLM  
 F. ☐ Surface owner  
 G. ☒ For all of the above, proof of notification or publication is attached, and/or,  
 H. ☐ No notice required

#### FOR OCD ONLY

- ☐ Notice Complete
- ☐ Application Content Complete

- 3) **CERTIFICATION:** I hereby certify that the information submitted with this application for administrative approval is **accurate** and **complete** to the best of my knowledge. I also understand that **no action** will be taken on this application until the required information and notifications are submitted to the Division.

**Note: Statement must be completed by an individual with managerial and/or supervisory capacity.**

Kaitlyn A. Luck

Print or Type Name

  
 Signature

09/05/21

Date

505-954-7286

Phone Number

kaluck@hollandhart.com

e-mail Address



**Kaitlyn A. Luck**  
**Associate**  
**Phone** (505) 954-7286  
KALuck@hollandhart.com

September 05, 2021

**VIA ONLINE FILING**

Adrienne Sandoval, Director  
Oil Conservation Division  
New Mexico Department of Energy,  
Minerals and Natural Resources  
1220 South Saint Francis Drive  
Santa Fe, New Mexico 87505

**Re: Application of DJR Operating, LLC for administrative approval of a 320-acre non-standard horizontal spacing created under Division Rules 19.15.16.15 NMAC and comprised of the S/2 NW/4, the SW/4 NE/4, and the N/2 S/2 of Section 2, and the SE/4 NE/4 of Section 3, Township 25 South, Range 12 West, N.M.P.M., San Juan County, New Mexico.**

Dear Ms. Sandoval:

Pursuant to 19.15.16.15(B)(5) NMAC, DJR Operating, LLC ("DJR Operating") (OGRID No. 371838) seeks administrative approval of a 320-acre non-standard horizontal spacing unit comprised of the S/2 NW/4, the SW/4 NE/4, and the N/2 S/2 of Section 2, and the SE/4 NE/4 of Section 3, Township 25 South, Range 12 West, N.M.P.M., San Juan County, New Mexico. The proposed non-standard spacing unit will be dedicated to the **Bisti #100H well** and be comprised of acreage within the Bisti Lower-Gallup (Oil) Pool (5890) and the Basin Mancos (Gas) Pool (97232).

Under Division Rules, 19.15.16.15(B)(3) and (4) NMAC, standard horizontal gas spacing units are comprised of 160-acre tracts, or at the operator's option, the designated tract size for single spacing unit identified in a Division Order for a pool associated with the proposed well. Division Rule 19.15.16.15(B)(5) NMAC authorizes administrative approval of non-standard spacing units to prevent waste and protect correlative rights in conformance with the procedures provided for director approval in 19.15.15.11(B) NMAC.

DJR Operating seeks approval of this non-standard spacing unit because the **Bisti #100H well** (API No. pending) wellbore will be drilled into a Gallup sandstone reservoir containing oil as the primary hydrocarbon phase. The surrounding organic rich Mancos formation is locally mature for oil generation. While some associated gas is produced in nearly all Gallup horizontal wells, the primary phase will be liquid oil. As such, the proposed non-standard unit is based on

T 505.988.4421 F 505.983.6043  
110 North Guadalupe, Suite 1, Santa Fe, NM 87501-1849  
Mail to: P.O. Box 2208, Santa Fe, NM 87504-2208  
www.hollandhart.com

Alaska  
Colorado  
Idaho

Montana  
Nevada  
New Mexico

Utah  
Washington, D.C.  
Wyoming

the standard quarter-quarter section tracts for oil wells as identified in 19.15.16.15(B)(1) NMAC to include all 40-acre tracts that are penetrated by or within proximity of 330 feet or less of the completed interval being included in the proposed spacing unit.

The location of the completed interval for the **Bisti #100H well**, as proposed, satisfies oil well setbacks, however, since there are two points on the completed interval for the well that are less than the 660-foot setback requirement for gas wells under the Division Rules, 19.15.16.15(C)(5) NMAC, DJR Operating has separately filed an application for approval of an unorthodox well location.

**Exhibit A** is a copy of the Well Location and Acreage Dedication Plat (Form C-102) for the **Bisti #100H well** within the proposed non-standard spacing unit.

**Exhibit B** is a map showing the proposed **Bisti #100H well**; the proposed non-standard spacing unit; and the ownership of the Mancos formation underlying the proposed spacing unit and surrounding area.

The affected parties in the offsetting tracts are the same parties included in the proposed spacing unit, being Dugan Production Corporation, DJR Nominee Corporation, DJR Assets, LLC, Speerex Limited Partnership, the New Mexico State Land Office, and the Bureau of Land Management. A copy of this application with all attachments has been sent by certified mail to each affected party advising them that if they have an objection, it must be filed in writing with the Division within 20 days from the date the Division receives the application. Proof of mailing and a copy of the notice letter is attached as **Exhibit C**.

Your attention to this matter is appreciated.

Sincerely,

A handwritten signature in blue ink, appearing to read "Kaitlyn A. Luck", is written over a horizontal line.

Kaitlyn A. Luck  
**ATTORNEY FOR DJR OPERATING, LLC**

## Attached to Application for Non-Standard Spacing Unit for Bisti 100H Well

**DISTRICT I**

1625 N. French Dr., Hobbs, N.M. 88240  
Phone: (575) 393-6161 Fax: (575) 393-0720

**DISTRICT II**

811 S. First St., Artesia, N.M. 88210  
Phone: (575) 748-1283 Fax: (575) 748-9720

**DISTRICT III**

1000 Rio Brazos Rd., Aztec, N.M. 87410  
Phone: (505) 334-6178 Fax: (505) 334-6170

**DISTRICT IV**

1220 S. St. Francis Dr., Santa Fe, NM 87505  
Phone: (505) 476-3460 Fax: (505) 476-3462

State of New Mexico  
Energy, Minerals & Natural Resources Department

Form C-102  
Revised August 1, 2011

OIL CONSERVATION DIVISION  
1220 South St. Francis Dr.  
Santa Fe, NM 87505

Submit one copy to appropriate  
District Office

☐ AMENDED REPORT

## WELL LOCATION AND ACREAGE DEDICATION PLAT

<sup>1</sup> API Number	<sup>2</sup> Pool Code	<sup>3</sup> Pool Name BASIN MANCOS GAS / BISTI LOWER GALLUP
<sup>4</sup> Property Code	<sup>5</sup> Property Name BISTI	<sup>6</sup> Well Number 100H
<sup>7</sup> OGRID No. 371838	<sup>8</sup> Operator Name DJR OPERATING, LLC	<sup>9</sup> Elevation 6328'

<sup>10</sup> Surface Location

UL or lot no.	Section	Township	Range	Lot Idn	Feet from the	North/South line	Feet from the	East/West line	County
L	1	25N	12W		2098'	SOUTH	387'	WEST	SAN JUAN

<sup>11</sup> Bottom Hole Location If Different From Surface

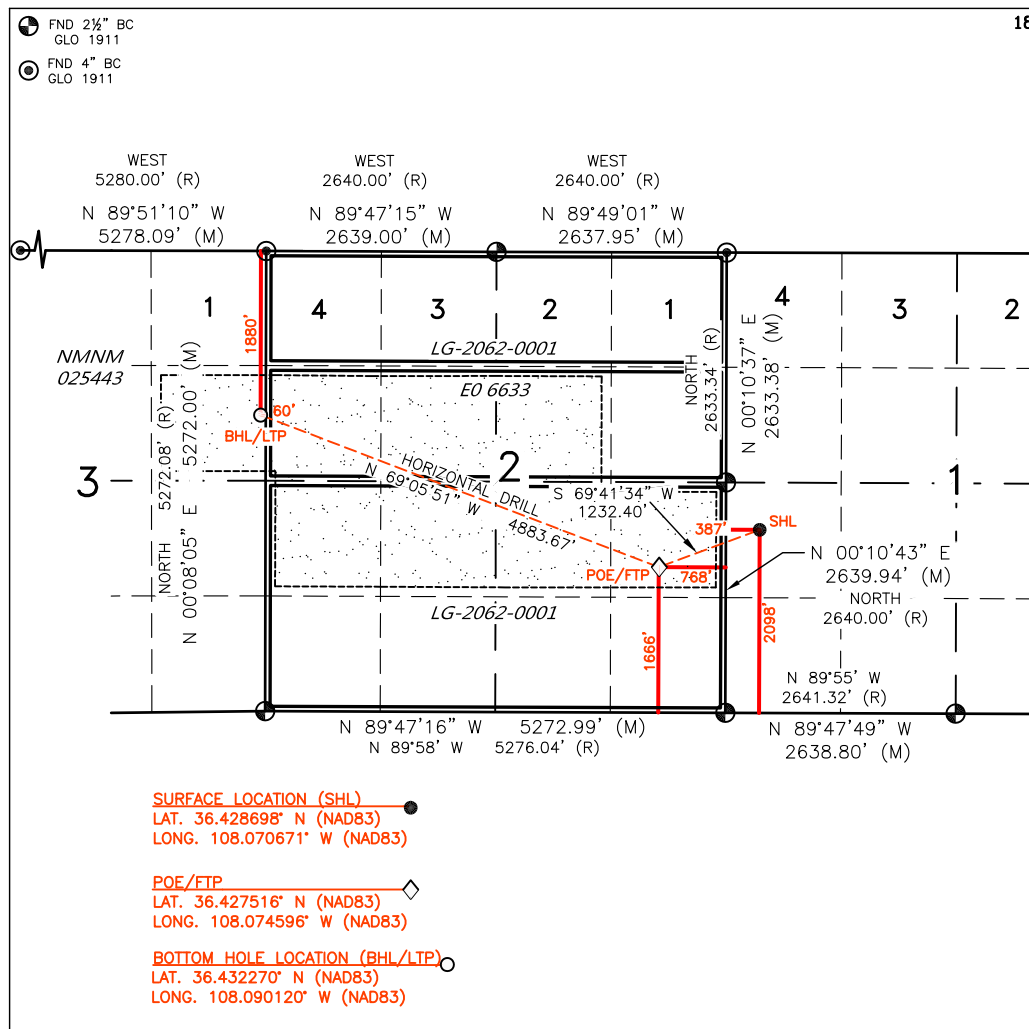
UL or lot no.	Section	Township	Range	Lot Idn	Feet from the	North/South line	Feet from the	East/West line	County
H	3	25N	12W		1880'	NORTH	60'	EAST	SAN JUAN

<sup>12</sup> Dedicated Acres PENETRATED SPACING:  
BASIN MANCOS SEC. 2: SW/NW, SE/NW, NE/SW,  
NW/SW, SW/NW, NW/SE & NE/SE (280 AC.);  
BISTI LOWER GALLUP SEC. 3: SE/NE (40 AC.) =  
320 ACRES TOTAL

<sup>13</sup> Joint or Infill<sup>14</sup> Consolidation Code<sup>15</sup> Order No.

NO ALLOWABLE WILL BE ASSIGNED TO THIS COMPLETION UNTIL ALL INTERESTS HAVE BEEN CONSOLIDATED  
OR A NON-STANDARD UNIT HAS BEEN APPROVED BY THE DIVISION

16



## 17 OPERATOR CERTIFICATION

I hereby certify that the information contained herein is true and complete to the best of my knowledge and belief, and that this organization either owns a working interest or unleased mineral interest in the land including the proposed bottom hole location or has a right to drill this well at this location pursuant to a contract with an owner of such a mineral or working interest, or to a voluntary pooling agreement or a compulsory pooling order heretofore entered by the division.

Signature \_\_\_\_\_ Date \_\_\_\_\_

Printed Name \_\_\_\_\_

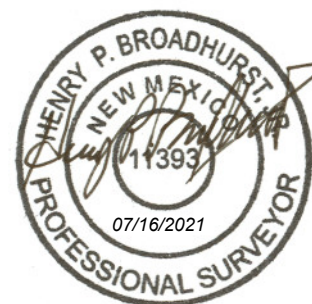
E-mail Address \_\_\_\_\_

## SURVEYOR CERTIFICATION

I hereby certify that the well location shown on this plat was plotted from field notes of actual surveys made by me or under my supervision, and that the same is true and correct to the best of my belief.

DECEMBER 3, 2019

Date of Survey  
Signature and Seal of Professional Surveyor:



Certificate Number 11393

DISTRICT I

1625 N. French Dr., Hobbs, N.M. 88240  
Phone: (575) 393-6161 Fax: (575) 393-0720

DISTRICT II

811 S. First St., Artesia, N.M. 88210  
Phone: (575) 748-1283 Fax: (575) 748-9720

DISTRICT III

1000 Rio Brazos Rd., Aztec, N.M. 87410  
Phone: (505) 334-6178 Fax: (505) 334-6170

DISTRICT IV

1220 S. St. Francis Dr., Santa Fe, NM 87505  
Phone: (505) 476-3460 Fax: (505) 476-3462

State of New Mexico  
Energy, Minerals & Natural Resources Department

Form C-102  
Revised August 1, 2011

OIL CONSERVATION DIVISION  
1220 South St. Francis Dr.  
Santa Fe, NM 87505

Submit one copy to appropriate  
District Office

☐ AMENDED REPORT

**BISTI #100H**

2755.90 LINEAR FEET OF WELLBORE WITHIN  
LG-2062-0001  
LOCATED IN THE NE/SE, NW/SE, NE/SW,  
OF SECTION 2,  
T25N, R12W, N.M.P.M.,  
SAN JUAN COUNTY, NEW MEXICO

WELLBORE	NS-FOOT	NS INDICATOR	EW-FOOT	EW INDICATOR	LATITUDE	LONGITUDE
FROM	1666	FSL	768	FEL	36.427516° N	108.074596° W
TO	2640	FSL	1930	FWL	36.430199° N	108.083356° W

2063.60 LINEAR FEET OF WELLBORE WITHIN  
E0 6633  
LOCATED IN THE SE/NW & SW/NW  
OF SECTION 2,  
T25N, R12W, N.M.P.M.,  
SAN JUAN COUNTY, NEW MEXICO

WELLBORE	NS-FOOT	NS INDICATOR	EW-FOOT	EW INDICATOR	LATITUDE	LONGITUDE
FROM	2640	FSL	1930	FWL	36.430199° N	108.083356° W
TO	1903	FNL	0	FWL	36.432207° N	108.089916° W

64.17 LINEAR FEET OF WELLBORE WITHIN  
NMNM 025443  
LOCATED IN THE SE/NE OF SECTION 3,  
T25N, R12W, N.M.P.M.,  
SAN JUAN COUNTY, NEW MEXICO

WELLBORE	NS-FOOT	NS INDICATOR	EW-FOOT	EW INDICATOR	LATITUDE	LONGITUDE
FROM	1903	FNL	0	FEL	36.432207° N	108.089916° W
TO	1880	FNL	60	FEL	36.432270° N	108.090120° W

# WELL FLAG

LATITUDE: 36.428698° N  
LONGITUDE: 108.070671° W  
DATUM: NAD83

## DJR OPERATING, LLC

**BISTI #100H**

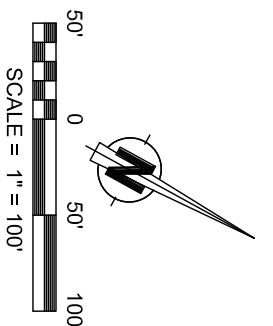
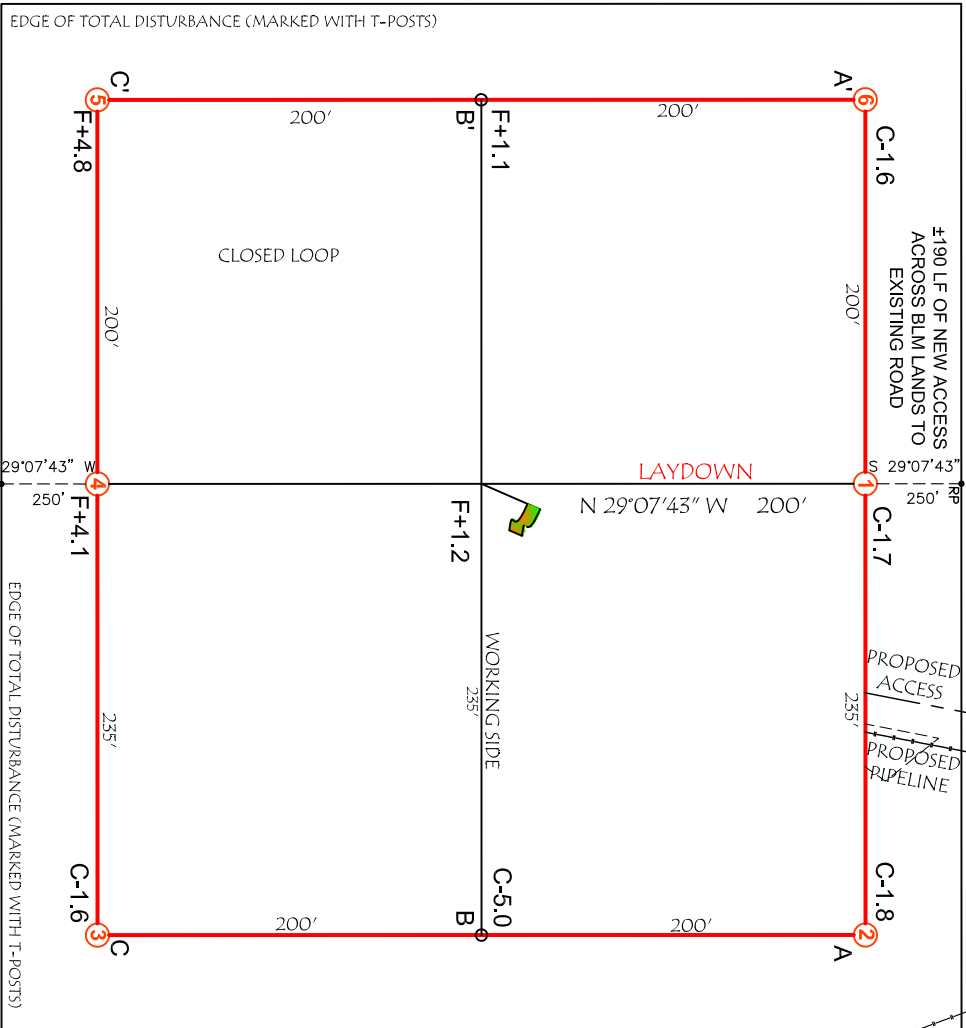
2098' FSL & 387' FWL  
LOCATED IN THE NW/4 SW/4 OF SECTION 1,  
T25N, R12W, N.M.P.M.,  
SAN JUAN COUNTY, NEW MEXICO  
GROUND ELEVATION: 6327', NAVD 88  
FINISHED PAD ELEVATION: 6327.7', NAVD 88  
BISTI L01-2512

### NOTES:

- 1.) BASIS OF BEARING: BETWEEN FOUND MONUMENTS AT THE WEST QUARTER CORNER AND THE NORTHWEST CORNER OF SECTION 1, TOWNSHIP 25 NORTH, RANGE 12 WEST, N.M.P.M., SAN JUAN COUNTY, NEW MEXICO. LINE BEARS: N 07°10'37" E A DISTANCE OF 2633.38 FEET AS MEASURED BY G.P.S. AND BASED ON THE N.M.S.P. COORDINATE SYSTEM (WEST ZONE).
- 2.) LATITUDE, LONGITUDE AND ELLIPSOIDAL HEIGHT BASED ON AZTEC CORRS L1 PHASE CENTER. DISTANCES SHOWN ARE GROUND DISTANCES USING A TRAVERSE MERCATOR PROJECTION FROM NAD83+ ELLIPSOID, CONVERTED TO NAD83. NAVD88 ELEVATIONS AS PREDICTED BY GEOD09.
- 3.) LOCATION OF UNDERGROUND UTILITIES DEPICTED ARE APPROXIMATE. PRIOR TO EXCAVATION UNDERGROUND UTILITIES SHOULD BE FIELD VERIFIED. ALL CONSTRUCTION ACTIVITIES SHOULD BE COORDINATED WITH THE FIELD OFFICE OF THE CALIFORNIA DEPARTMENT OF WATER RESOURCES PRIOR TO CONSTRUCTION.
- 4.) T-POSTS HAVE BEEN SET TO DEFINE THE EDGE OF DISTURBANCE LIMITS WHICH ARE 50' OFFSETS FROM THE EDGE OF THE STAKED WELL PAD.

~ SURFACE OWNERSHIP ~
BUREAU OF LAND MANAGEMENT

TOTAL PERMITTED AREA  
500' x 535' = 6.14 ACRES  
SCALE: 1" = 100'  
DATE: 01/18/20  
DRAWN BY: GRR



SLOPES TO BE CONSTRUCTED TO MATCH THE ORIGINAL CONTOURS AS CLOSE AS POSSIBLE.

**CCI**

**CHENAULT CONSULTING INC.**

4000 COLLEGE BLVD.  
SUITE 201  
FARMINGTON, NM 87402  
(505) 325-7707

NOTE:  
CHENAULT CONSULTING, INC. IS NOT LIABLE FOR UNDERGROUND UTILITIES OR PIPELINES. CONTRACTOR SHOULD CALL ONE-CALL FOR LOCATION OF ANY MARKED OR UNMARKED, BURIED PIPELINES OR CABLES ON WELL PAD, IN CONSTRUCTION ZONE AND/OR ACCESS ROAD AT LEAST TWO (2) WORKING DAYS PRIOR TO CONSTRUCTION.

**DJR OPERATING, LLC**

**WELL FLAG**

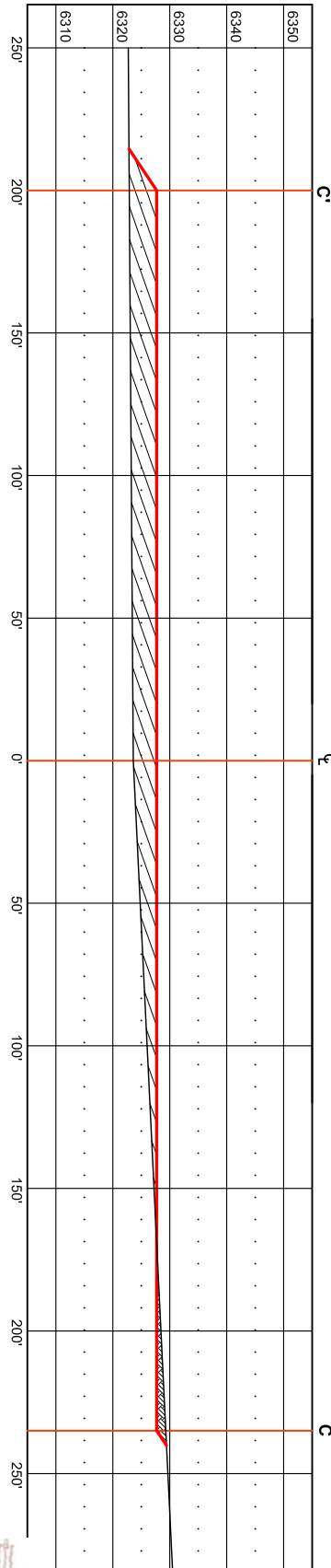
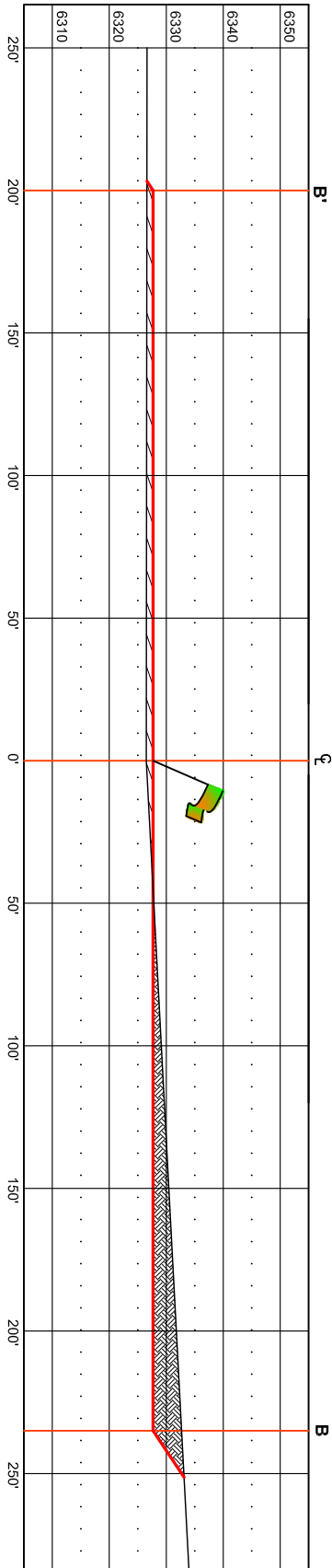
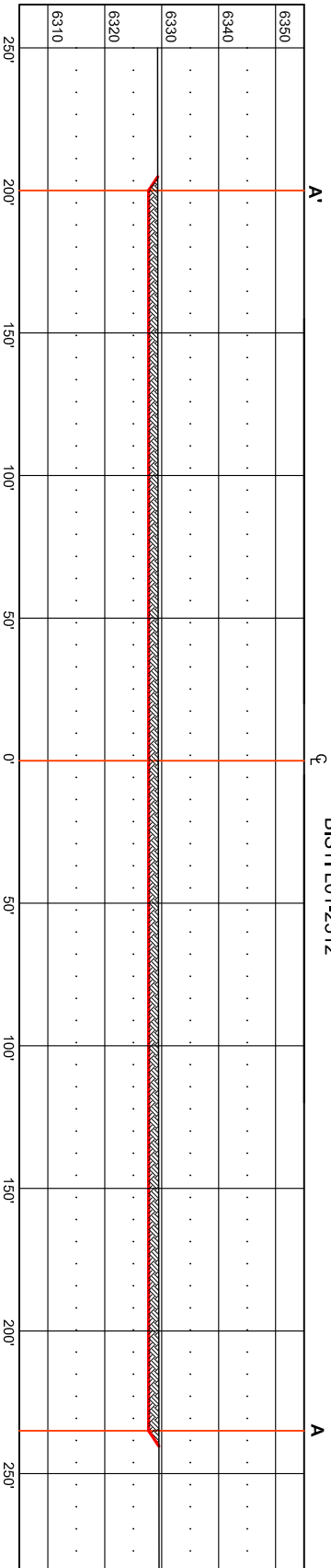
LATITUDE: 36.428698° N  
LONGITUDE: 108.070671° W  
DATUM: NAD83

**DJR OPERATING, LLC**

**BISTI #100H**

2098' FSL & 387' FWL  
LOCATED IN THE NW/4 SW/4 OF SECTION 1,  
T25N, R12W, N.M.P.M.,  
SAN JUAN COUNTY, NEW MEXICO  
GROUND ELEVATION: 6327', NAVD 88  
FINISHED PAD ELEVATION: 6327.7', NAVD 88  
BISTI L01-2512

THIS DIAGRAM IS AN ESTIMATE  
OF DIRT BALANCE AND IS NOT  
INTENDED TO BE AN EXACT  
MEASURE OF VOLUME



**CCI**

**DJR OPERATING, LLC**



**FILL**











**CUT**

VERT. SCALE: 1" = 30'  
HORZ. SCALE: 1" = 60'  
DATE: 01/18/20  
DRAWN BY: GRR

**CHEVAULT CONSULTING INC.**  
4800 COLLEGE BLVD., SUITE 201  
FARMINGTON, NM 87402  
(505) 325-7707



### WELL LEGEND

-  GAS
-  ABANDONED GAS
-  INJECTION
-  ABANDONED
-  OIL
-  ABANDONED OIL
-  SALT WATER INJECTION
-  ABANDONED SALT WATER INJECTION

Topographic map of the Carson National Monument area. The map shows various wells, units, and landmarks. A large black circle highlights a central area. A red dot is located near the center of this circle, with a red line segment extending from it to the right, labeled '150\''. A dashed line also extends from the red dot to the right, labeled '820\''. A scale bar indicates '1 MILE'.

0	.25	.5
---	-----	----

SCALE = 1" = 1/2 MILE

**CCI**

**CHENAULT CONSULTING INC.**

4800 COLLEGE BLVD.  
SUITE 201  
FARMINGTON, NM 87402  
(505)-325-7707

DATE: 05/24/21  
DRAWN BY: GRR



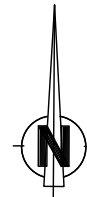


**WELL FLAG**

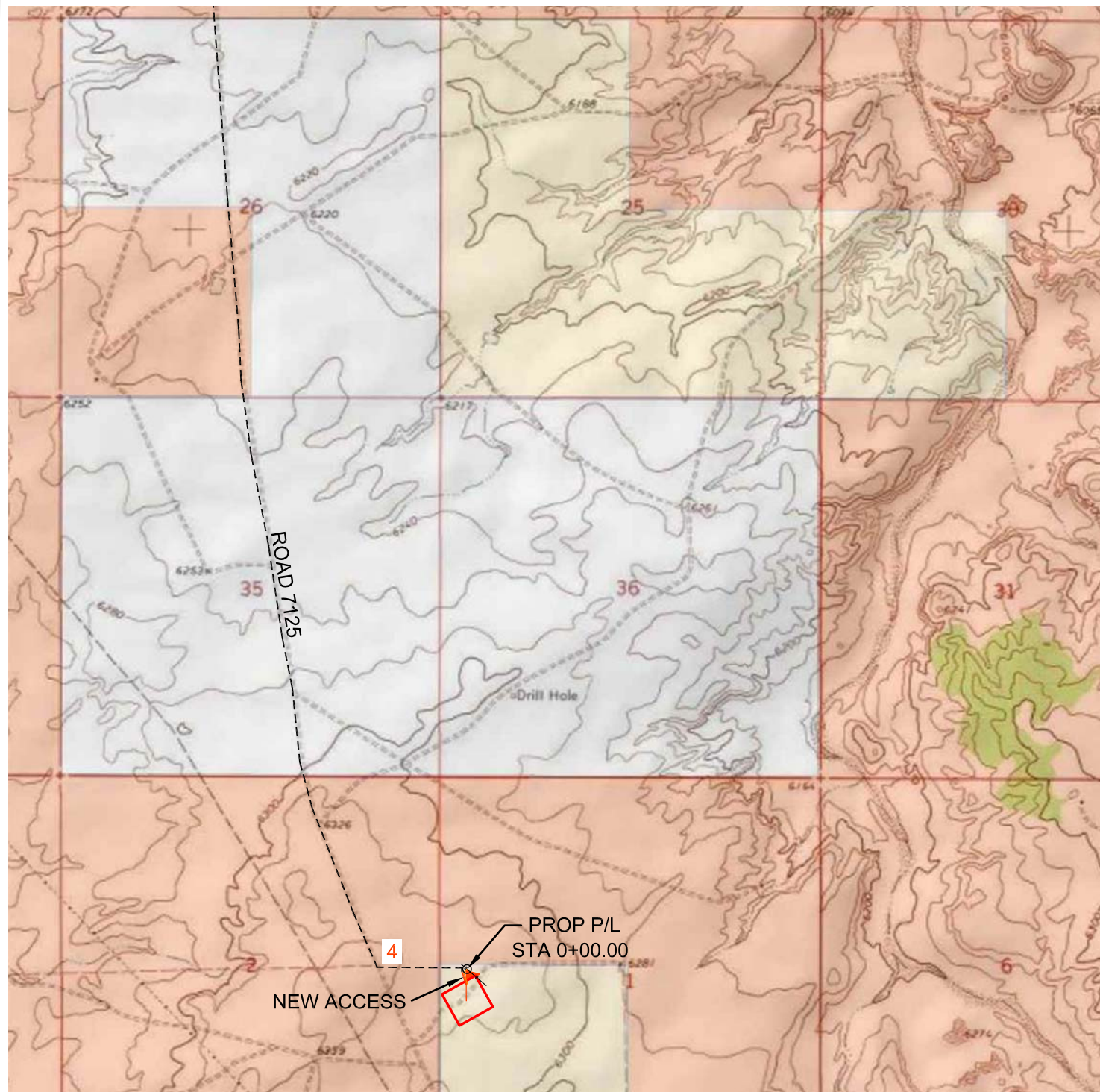
LATITUDE: 36.428698° N  
 LONGITUDE: 108.070671° W  
 DATUM: NAD83

**DJR OPERATING, LLC****BISTI #100H**

2098' FSL & 387' FWL  
 LOCATED IN THE NW/4 SW/4 OF SECTION 1,  
 T25N, R12W, N.M.P.M.,  
 SAN JUAN COUNTY, NEW MEXICO  
 ±190' OF NEW ACCESS ACROSS BLM LANDS  
 BISTI L01-2512

**OWNERSHIP LEGEND**

- BLM
- BOR
- FOREST
- ALLOTTED/TRIBAL
- PRIVATE
- STATE



U.S.G.S. QUAD: CARSON TRADING POST  
 SCALE: 1" = 2000' (1:24,000)  
 DATE: 01/18/20  
 DRAWN BY: GRR

**DJR OPERATING, LLC**

**CCI****CHENAULT CONSULTING INC.**

4800 COLLEGE BLVD.  
 SUITE 201  
 FARMINGTON, NM 87402  
 (505) 325-7707



**WELL FLAG**

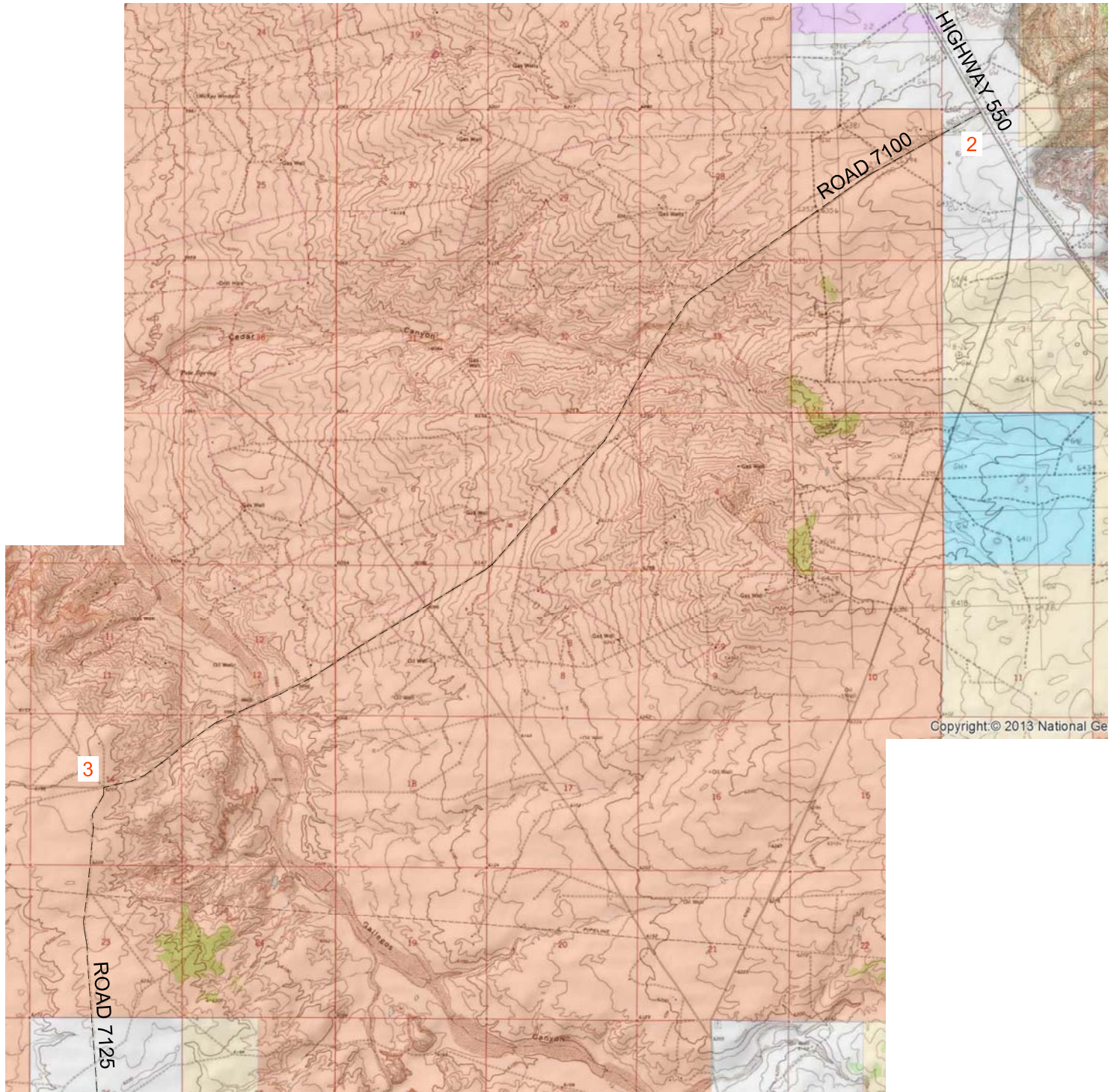
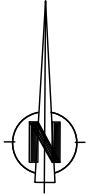
LATITUDE: 36.428698° N  
 LONGITUDE: 108.070671° W  
 DATUM: NAD83

**OWNERSHIP LEGEND**

- BLM
- BOR
- FOREST
- ALLOTTED/TRIBAL
- PRIVATE
- STATE

**DJR OPERATING, LLC****BISTI #100H**

2098' FSL & 387' FWL  
 LOCATED IN THE NW/4 SW/4 OF SECTION 1,  
 T25N, R12W, N.M.P.M.,  
 SAN JUAN COUNTY, NEW MEXICO  
 ±190' OF NEW ACCESS ACROSS BLM LANDS  
 BISTI L01-2512



U.S.G.S. QUAD: CARSON TRADING POST  
 SCALE: 1" = 5000'  
 DATE: 01/18/20  
 DRAWN BY: GRR

**DJR OPERATING, LLC**

**CCI****CHENAULT CONSULTING INC.**

4800 COLLEGE BLVD.  
 SUITE 201  
 FARMINGTON, NM 87402  
 (505)-325-7707

**DJR OPERATING, LLC****BISTI #100H**

2098' FSL & 387' FWL  
LOCATED IN THE NW/4 SW/4 OF SECTION 1,  
T25N, R12W, N.M.P.M.,  
SAN JUAN COUNTY, NEW MEXICO

BISTI L01-2512

**DIRECTIONS**

- 1) FROM THE INTERSECTION OF HIGHWAY 64 & HIGHWAY 550 IN BLOOMFIELD, GO SOUTH ON HIGHWAY 550, 12.0 MILES TO ROAD 7100.
- 2) TURN RIGHT ONTO 7100 AND GO 7.4 MILES TO ROAD 7125.
- 3) TURN LEFT ONTO 7125 AND GO 4.1MILES TO A CATTLE GUARD.
- 4) CROSS THE CATTLE GUARD, TURN LEFT AND GO 0.2 MILES WHERE ACCESS IS STAKED ON RIGHT SIDE OF ROAD.

WELL FLAG LOCATED AT LAT. 36.428698° N, LONG.108.070671° W (NAD 83).

**CCI****CHENAULT CONSULTING INC.**

4800 COLLEGE BLVD.  
SUITE 201  
FARMINGTON, NM 87402  
(505)-325-7707

DATE: 01/18/20  
DRAWN BY: GRR

 **DJR OPERATING, LLC**

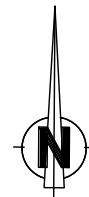


**WELL FLAG**

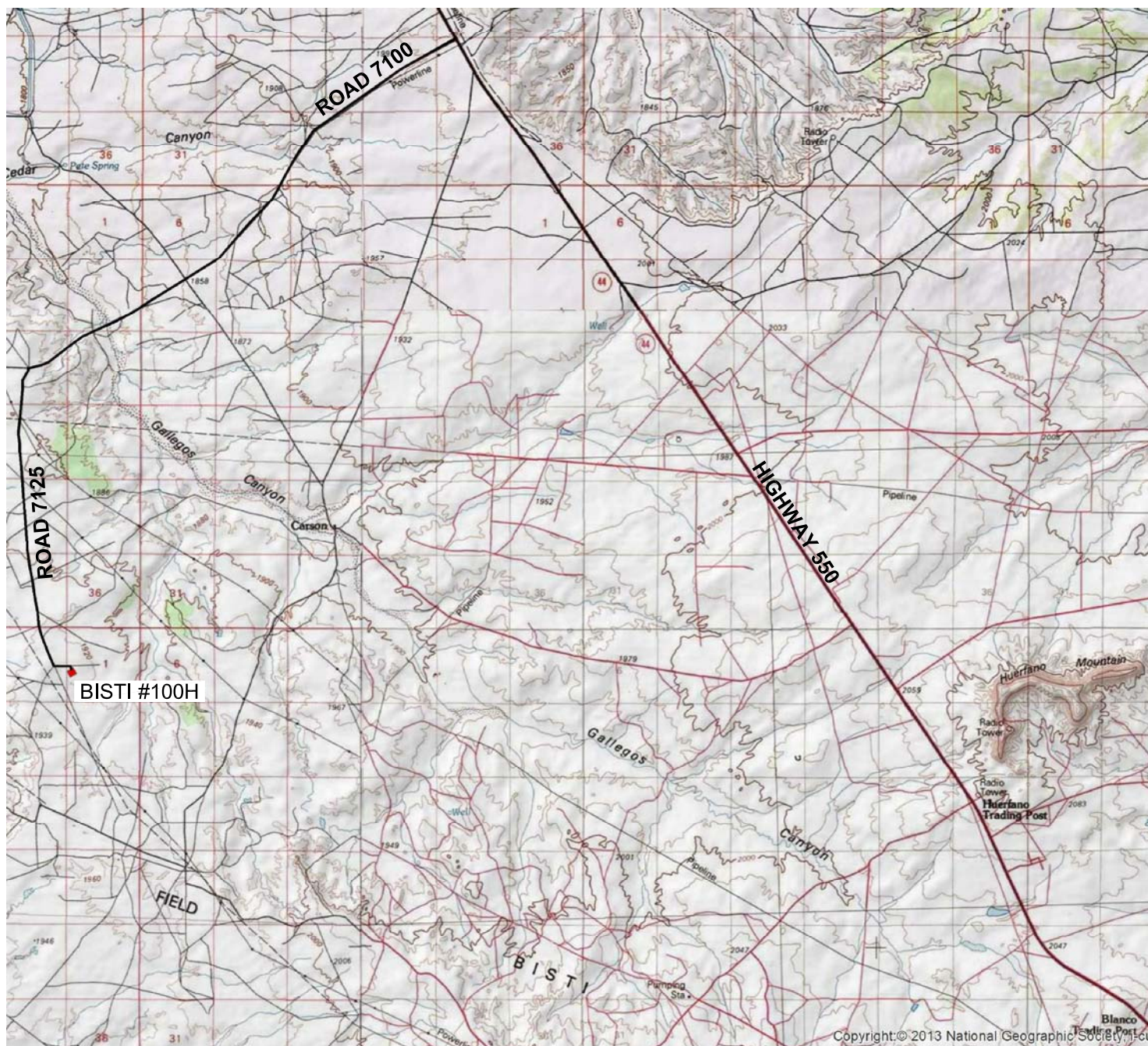
LATITUDE: 36.428698° N  
 LONGITUDE: 108.070671° W  
 DATUM: NAD83

**DJR OPERATING, LLC****BISTI #100H**

2098' FSL & 387' FWL  
 LOCATED IN THE NW/4 SW/4 OF SECTION 1,  
 T25N, R12W, N.M.P.M.,  
 SAN JUAN COUNTY, NEW MEXICO  
 BISTI L01-2512



28.1 MILES FROM THE BLANCO  
 TRADING POST TO WELL PAD



SCALE: 1" = 2 MILES

DATE: 01/18/20

DRAWN BY: GRR

**DJR OPERATING, LLC**

**CCI**

**CHENAULT CONSULTING INC.**

4800 COLLEGE BLVD.  
 SUITE 201  
 FARMINGTON, NM 87402  
 (505)-325-7707



# CENTER OF PAD

LATITUDE: 36.429663° N

LONGITUDE: 108.071044° W

DATUM: NAD83

## DJR OPERATING, LLC

BISTI #100H

STAGING AREA AND G-TANK PAD

LOCATED IN THE NW/4 SW/4 OF SECTION 1,

T25N, R12W, N.M.P.M.,

SAN JUAN COUNTY, NEW MEXICO

FINISHED PAD ELEVATION: 6330', NAVD 88

BISTI L01-2512

### NOTES:

- 1.) BASIS OF BEARING: BETWEEN FOUND MONUMENTS AT THE WEST QUARTER CORNER AND THE NORTHWEST CORNER OF SECTION 1, TOWNSHIP 25 NORTH, COUNTY NEW MEXICO, SAN JUAN COUNTY, NEW MEXICO. LINE BEARS: N 0°10'37" E A DISTANCE OF 2633.38 FEET AS MEASURED BY G.P.S. AND BASED ON THE N.M.S.P. COORDINATE SYSTEM (WEST ZONE).
- 2.) LATITUDE, LONGITUDE AND ELLIPSOIDAL HEIGHT BASED ON AZTEC CORRS L1 PHASE CENTER. DISTANCES SHOWN ARE GROUND DISTANCES USING A TRAVERSE, MERCATOR PROJECTION, NAD83+ ELLIPSOID, NAVD83 ELEVATIONS AS PREDICTED BY GEOID09.
- 3.) LOCATION OF UNDERGROUND UTILITIES DEPICTED ARE APPROXIMATE. PRIOR TO EXCAVATION UNDERGROUND UTILITIES SHOULD BE FIELD VERIFIED. ALL CONSTRUCTION ACTIVITIES SHOULD BE COMPLETED WITHIN THE 48 HOURS PRIOR TO CONSTRUCTION.
- 4.) T-POSTS HAVE BEEN SET TO DEFINE THE EDGE OF DISTURBANCE LIMITS WHICH ARE 50' OFFSETS FROM THE EDGE OF THE STAKED WELL PAD.

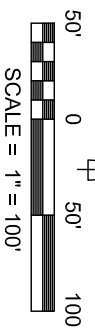
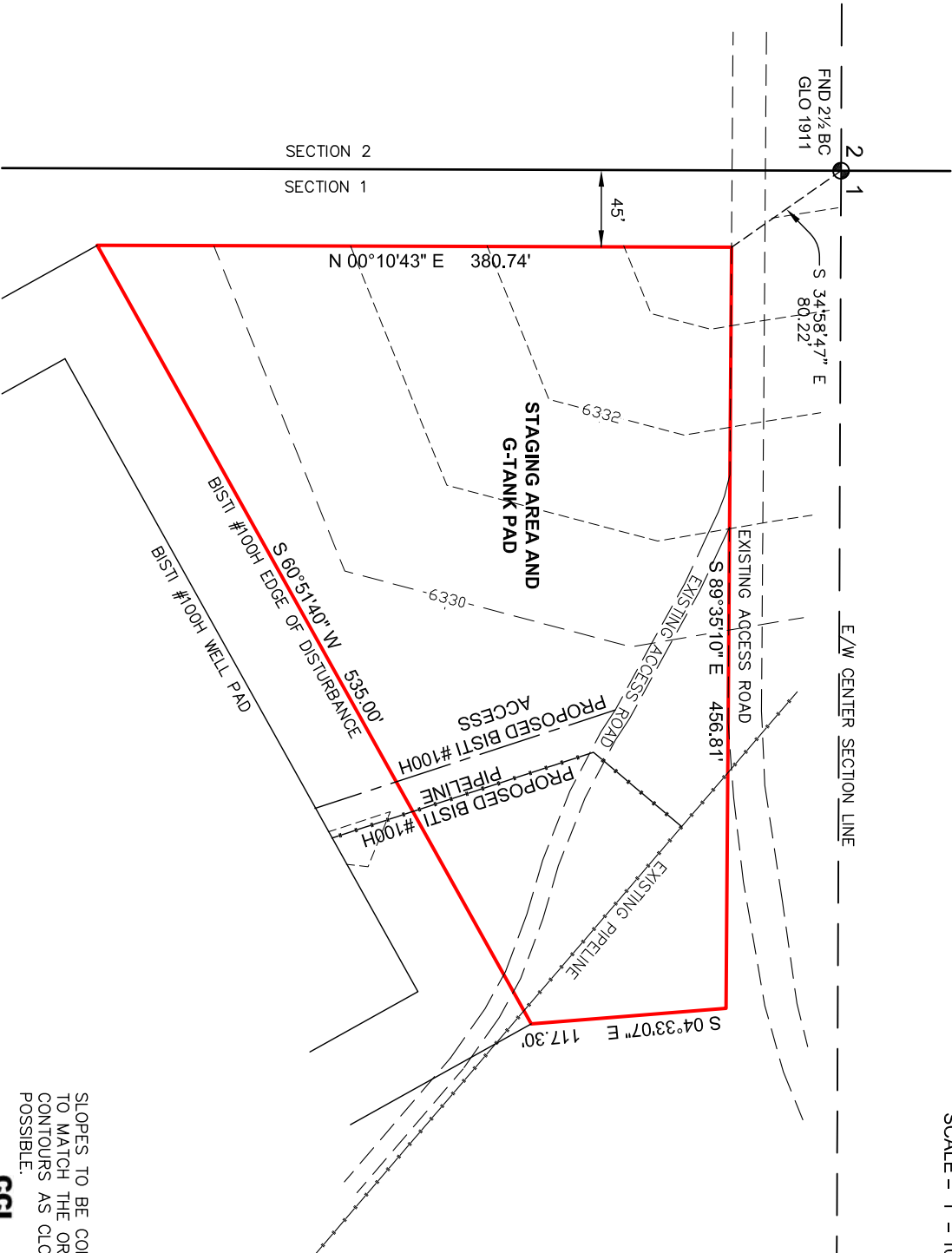
~ SURFACE OWNERSHIP ~
BUREAU OF LAND MANAGEMENT

TOTAL PERMITTED AREA  
±249' x ±493' = 2.65 ACRES

SCALE: 1" = 100'

DATE: 01/22/20

DRAWN BY: GRR



NOTE:  
CHENAULT CONSULTING, INC. IS NOT LIABLE FOR UNDERGROUND UTILITIES OR PIPELINES. CONTRACTOR SHOULD CALL ONE-CALL FOR LOCATION OF ANY MARKED OR UNMARKED, BURIED PIPELINES OR CABLES ON WELL PAD, IN CONSTRUCTION ZONE AND/OR ACCESS ROAD AT LEAST TWO (2) WORKING DAYS PRIOR TO CONSTRUCTION.

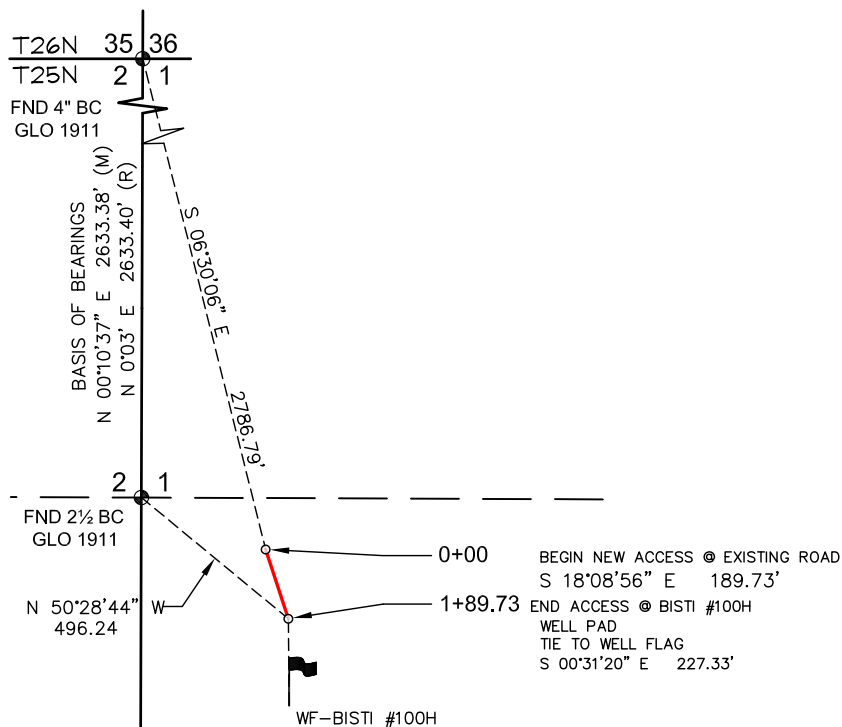
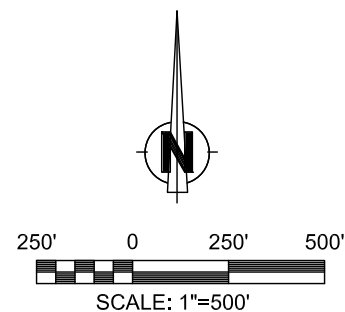
SLOPES TO BE CONSTRUCTED TO MATCH THE ORIGINAL CONTOURS AS CLOSE AS POSSIBLE.

CCI

CHENAULT CONSULTING INC.

4600 COLLEGE BLVD.  
SUITE 201  
FARMINGTON, NM 87402  
(505) 325-7707

PROPOSED ACCESS FOR  
**DJR OPERATING, LLC**  
**BISTI #100H**  
 LOCATED IN THE NW/4 SW/4 OF SECTION 1,  
 T25N, R12W, N.M.P.M.,  
 SAN JUAN COUNTY, NEW MEXICO



# NOTES

- 1) BASIS OF BEARINGS FOR THIS SURVEY ARE BETWEEN FOUND MONUMENTS AT THE WEST QUARTER CORNER AND THE NORTHWEST CORNER OF SECTION 1, TOWNSHIP 25 NORTH, RANGE 12 WEST, N.M.P.M., SAN JUAN COUNTY, NEW MEXICO  
 LINE BEARS: N 00°10'37" E 2633.38'
- 2) DATE OF FIELD SURVEY: DECEMBER, 2019.
- 3) THIS EXHIBIT IS NOT A BOUNDARY SURVEY AND SHOULD NOT BE USED AS SUCH.
- 4) THIS EXHIBIT MAY NOT SHOW ALL EXISTING EASEMENTS AND UTILITIES.
- 5) CALL THE NEW MEXICO 811 SYSTEM FOR UTILITY LOCATIONS BEFORE EXCAVATING OR DIGGING.

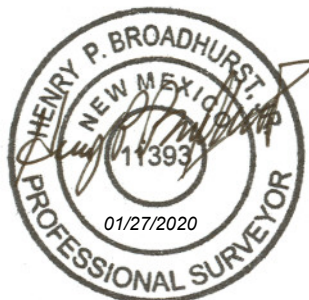
PREPARED BY:

**CCI**

**CHENAULT CONSULTING INC.**

4800 COLLEGE BLVD #105  
 FARMINGTON, NM 87402  
 (505) 325-7707

I, HENRY P. BROADHURST, JR., A NEW MEXICO REGISTERED PROFESSIONAL SURVEYOR CERTIFY THAT I CONDUCTED AND AM RESPONSIBLE FOR THIS SURVEY, THAT THIS SURVEY IS TRUE AND CORRECT TO THE BEST OF MY KNOWLEDGE AND BELIEF, AND THAT THIS SURVEY AND PLAT MEET THE MINIMUM STANDARDS FOR SURVEYING IN NEW MEXICO.



~ SURFACE OWNERSHIP ~ BUREAU OF LAND MANAGEMENT	
SECTION 1, T25N, R12W 0+00 TO 1+89.73 189.73 FT / 11.50 RODS	
DATE OF SURVEY	12/03/20 GR/JC

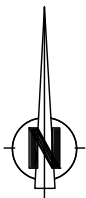
DRAWING: BISTI L01-2512 #100H	
SCALE: 1" = 500'	REV. 0 01/18/2020
DRAFTED BY: GRR	
SHEET: 1 of 1	

**DJR OPERATING, LLC**

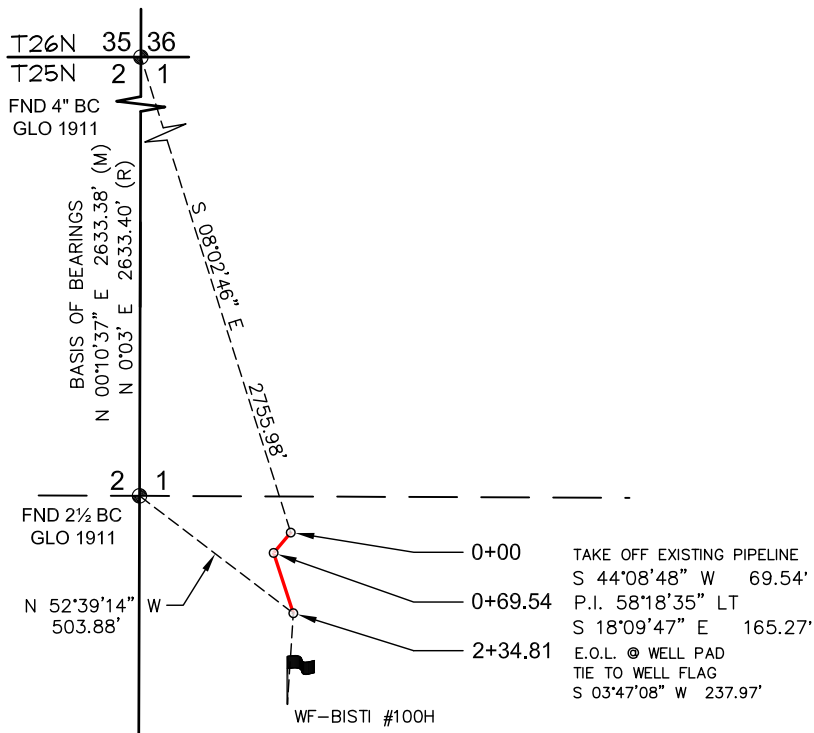
# PROPOSED PIPELINES FOR DJR OPERATING, LLC

## BISTI #100H

LOCATED IN THE NW/4 SW/4 OF SECTION 1,  
T25N, R12W, N.M.P.M.,  
SAN JUAN COUNTY, NEW MEXICO



250' 0 250' 500'  
SCALE: 1"=500'



### NOTES

- 1) BASIS OF BEARINGS FOR THIS SURVEY ARE BETWEEN FOUND MONUMENTS AT THE WEST QUARTER CORNER AND THE NORTHWEST CORNER OF SECTION 1, TOWNSHIP 25 NORTH, RANGE 12 WEST, N.M.P.M., SAN JUAN COUNTY, NEW MEXICO  
LINE BEARS: N 00°10'37" E 2633.38'
- 2) DATE OF FIELD SURVEY: DECEMBER, 2019.
- 3) THIS EXHIBIT IS NOT A BOUNDARY SURVEY AND SHOULD NOT BE USED AS SUCH.
- 4) THIS EXHIBIT MAY NOT SHOW ALL EXISTING EASEMENTS AND UTILITIES.
- 5) CALL THE NEW MEXICO 811 SYSTEM FOR UTILITY LOCATIONS BEFORE EXCAVATING OR DIGGING.

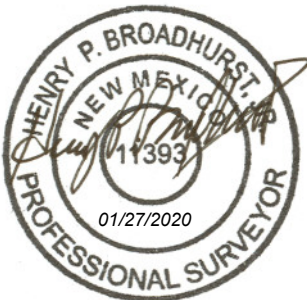
PREPARED BY:

**CCI**

**CHENAULT CONSULTING INC.**

4800 COLLEGE BLVD #105  
FARMINGTON, NM 87402  
(505) 325-7707

I, HENRY P. BROADHURST, JR., A NEW MEXICO REGISTERED PROFESSIONAL SURVEYOR CERTIFY THAT I CONDUCTED AND AM RESPONSIBLE FOR THIS SURVEY, THAT THIS SURVEY IS TRUE AND CORRECT TO THE BEST OF MY KNOWLEDGE AND BELIEF, AND THAT THIS SURVEY AND PLAT MEET THE MINIMUM STANDARDS FOR SURVEYING IN NEW MEXICO.



~ SURFACE OWNERSHIP ~  
BUREAU OF LAND MANAGEMENT

SECTION 1, T25N, R12W  
0+00 TO 2+34.81  
234.81 FT / 14.23 RODS

DATE OF SURVEY 12/03/20 GR/JC

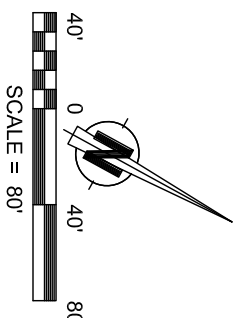
DRAWING: BISTI L01-2512 #100H

SCALE: 1" = 500' REV. 0 01/18/2020

DRAFTED BY: GRR

SHEET: 1 of 1


**DJR OPERATING, LLC**



SHL	LAT. 36.428698° N (NAD83)
	LONG. 108.070671° W (NAD83)
PPP	LAT. 36.427516° N (NAD83)
	LONG. 108.074596° W (NAD83)
EXIT/BHL	LAT. 36.432270° N (NAD83)
	LONG. 108.090120° W (NAD83)

[illegible]



 <b>OPERATING, LLC</b>	<b>AREA</b>	<b>CLASS</b>	<b>FILE NO.</b>
	<b>TYPICAL COMPLETION LAYOUT</b>	<b>A</b>	
<b>FROM</b>	<b>TO</b>	<b>DATE</b>	<b>TIME</b>
<b>CHENAUT CONSULTING, INC.</b>	<b>WELL PAD</b>	<b>SCALE</b>	<b>80'</b>
	<b>S01 - T25N-R12W</b>		

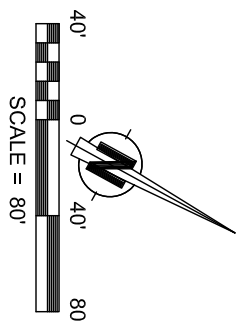
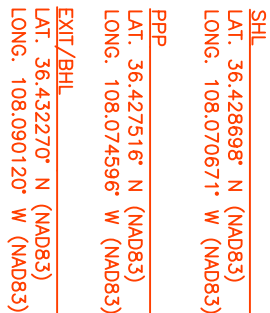
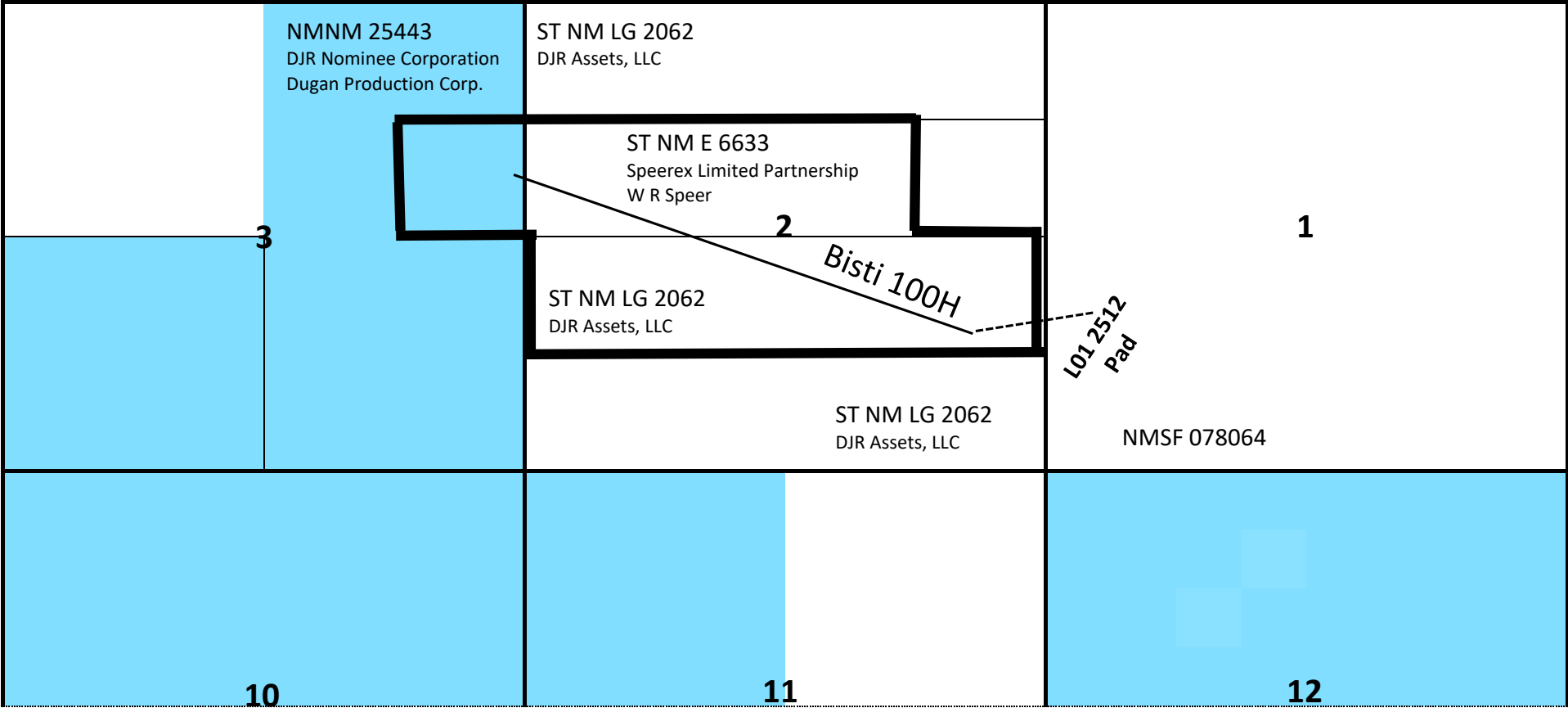


EXHIBIT "B"

Attached to Application for Non-Standard Spacing unit for Bisti 100H Well

R 12 W



Application Area - Spacing Unit Based on 40-acre tracts penetrated and within 330' or less from completed interval

- Basin Mancos Gas Pool (97232)
- Bisti Lower Gallup Pool (5890)



**Kaitlyn A. Luck**  
**Associate**  
**Phone** (505) 954-7286  
KALuck@hollandhart.com

September 02, 2021

**VIA CERTIFIED MAIL**  
**RETURN RECEIPT REQUESTED**

**TO AFFECTED PARTIES:**

**Re: Application of DJR Operating, LLC for administrative approval of a 320-acre non-standard horizontal spacing unit in the Bisti Lower-Gallup (Oil) Pool (5890) and the Basin Mancos (Gas) Pool (97232) comprised of the S/2 NW/4, the SW/4 NE/4, and the N/2 S/2 of Section 2, and the SE/4 NE/4 of Section 3, Township 25 South, Range 12 West, N.M.P.M., San Juan County, New Mexico.**

Ladies and Gentlemen:

Enclosed is a copy of the above-referenced application which was filed with the New Mexico Oil Conservation Division on this date. Any objection to this application must be filed in writing within twenty days from this date with the applicant and the New Mexico Oil Conservation Division, 1220 South St. Francis Drive, Santa Fe, New Mexico, 87505. If no objection is received within this twenty-day period, this application may be approved administratively by the Division.

If you have any questions about this application, please contact the following:

Mona Binion  
DJR Operating, LLC  
(303) 407-7399  
MBinion@djrlc.com

Sincerely,

A handwritten signature in blue ink, appearing to read "Kaitlyn Luck", written over a horizontal line.

Kaitlyn A. Luck  
ATTORNEY FOR DJR OPERATING, LLC

## EXHIBIT C

T 505.988.4421 F 505.983.6043  
110 North Guadalupe, Suite 1, Santa Fe, NM 87501-1849  
Mail to: P.O. Box 2208, Santa Fe, NM 87504-2208  
www.hollandhart.com

Alaska  
Colorado  
Idaho

Montana  
Nevada  
New Mexico

Utah  
Washington, D.C.  
Wyoming

Parent ID	Mail Date	Company	Address	City	ST	Zip	Mail Class	TrackingNo	Well
31309	09/02/2021	New Mexico State Land Office	PO Box 1148	Santa Fe	NM	87504-1148	Certified with Return Receipt (Signature)	9414811898765800698246	70957 - DJR_Bisti 100H NSL - notice list - 1
31309	09/02/2021	Speerex Limited Partnership	PO Box 1363	Mt Pleasant	SC	29465-1363	Certified with Return Receipt (Signature)	9414811898765800698284	70957 - DJR_Bisti 100H NSL - notice list - 2
31309	09/02/2021	Dugan Production Corp.	PO Box 420	Farmington	NM	87499-0420	Certified with Return Receipt (Signature)	9414811898765800698239	70957 - DJR_Bisti 100H NSL - notice list - 3



**District I**  
1625 N. French Dr., Hobbs, NM 88240  
Phone:(575) 393-6161 Fax:(575) 393-0720  
**District II**  
811 S. First St., Artesia, NM 88210  
Phone:(575) 748-1283 Fax:(575) 748-9720  
**District III**  
1000 Rio Brazos Rd., Aztec, NM 87410  
Phone:(505) 334-6178 Fax:(505) 334-6170  
**District IV**  
1220 S. St Francis Dr., Santa Fe, NM 87505  
Phone:(505) 476-3470 Fax:(505) 476-3462

**State of New Mexico**  
**Energy, Minerals and Natural Resources**  
**Oil Conservation Division**  
**1220 S. St Francis Dr.**  
**Santa Fe, NM 87505**

CONDITIONS  
  
Action 46494

CONDITIONS

Operator:  DJR OPERATING, LLC 1 Road 3263 Aztec, NM 87410	OGRID:  371838
	Action Number:  46494
	Action Type:  [UF-NSP] Non-Standard Proration (NSP)

CONDITIONS

Created By	Condition	Condition Date
llowe	None	9/7/2021