

RECEIVED: <b>11/17/21</b>	REVIEWER: <b>LRL</b>	TYPE: <b>NSL</b>	APP NO: <b>pLEL2134736577</b>
---------------------------	----------------------	------------------	-------------------------------

ABOVE THIS TABLE FOR OCD DIVISION USE ONLY

**NEW MEXICO OIL CONSERVATION DIVISION**  
- Geological & Engineering Bureau -  
1220 South St. Francis Drive, Santa Fe, NM 87505



### ADMINISTRATIVE APPLICATION CHECKLIST

THIS CHECKLIST IS MANDATORY FOR ALL ADMINISTRATIVE APPLICATIONS FOR EXCEPTIONS TO DIVISION RULES AND REGULATIONS WHICH REQUIRE PROCESSING AT THE DIVISION LEVEL IN SANTA FE

**Applicant:** OXY USA INC. (16696) **OGRID Number:** 16696  
**Well Name:** CORRAL GORGE 12-13 FEDERAL COM 34H **API:** 30-015-47201  
**Pool:** PURPLE SAGE WOLFCAMP (GAS) **Pool Code:** 98220

### SUBMIT ACCURATE AND COMPLETE INFORMATION REQUIRED TO PROCESS THE TYPE OF APPLICATION INDICATED BELOW

1) **TYPE OF APPLICATION:** Check those which apply for [A]

A. Location – Spacing Unit – Simultaneous Dedication

☒ NSL ☐ NSP (PROJECT AREA) ☐ NSP (PRORATION UNIT) ☐ SD

B. Check one only for [ I ] or [ II ]

[ I ] Commingling – Storage – Measurement

☐ DHC ☐ CTB ☐ PLC ☐ PC ☐ OLS ☐ OLM

[ II ] Injection – Disposal – Pressure Increase – Enhanced Oil Recovery

☐ WFX ☐ PMX ☐ SWD ☐ IPI ☐ EOR ☐ PPR

2) **NOTIFICATION REQUIRED TO:** Check those which apply.

- A. ☒ Offset operators or lease holders  
 B. ☐ Royalty, overriding royalty owners, revenue owners  
 C. ☐ Application requires published notice  
 D. ☒ Notification and/or concurrent approval by SLO  
 E. ☒ Notification and/or concurrent approval by BLM  
 F. ☐ Surface owner  
 G. ☒ For all of the above, proof of notification or publication is attached, and/or,  
 H. ☐ No notice required

#### FOR OCD ONLY

- ☐ Notice Complete  
☐ Application Content Complete

3) **CERTIFICATION:** I hereby certify that the information submitted with this application for administrative approval is **accurate** and **complete** to the best of my knowledge. I also understand that **no action** will be taken on this application until the required information and notifications are submitted to the Division.

**Note:** Statement must be completed by an individual with managerial and/or supervisory capacity.

LESLIE REEVES

Print or Type Name

Leslie T. Reeves

Signature

11-17/2021

Date

713-497-2492

Phone Number

LESLIE\_REEVES@OXY.COM

e-mail Address

**OXY USA Inc****5 Greenway Plaza, Suite 110  
Houston, TX 77046-0521**

November 16, 2021

New Mexico Oil Conservation Division  
1220 South St. Francis Dr.  
Santa Fe, NM 87505

Attention: Leonard Lowe

Re: ***Application for Administrative Approval of Non-Standard Location  
Corral Gorge 12-13 Federal Com 34H – Purple Sage Wolfcamp  
Surface – 230' FSL 2635' FWL Unit N Sec 1 T25S R29E  
First Take Point – 100' FNL 2225' FWL Unit C, Sec 12 T25S R29E  
Last Take Point – 100' FNL 2225' FWL Unit N, Sec 13 T25S R29E  
Bottom Hole – 20' FSL 2225' FWL Unit N, Sec 13 T25S R29E  
Eddy County, New Mexico***

Dear Mr. Lowe:

OXY USA Inc. respectfully requests administrative approval of a non-standard location on the Corral Gorge 12-13 Federal Com 34H well, API Number-30-015-47201, Property Code 328295. The #34H well is proposed to be completed in the Purple Sage Wolfcamp pool, Pool Code 98220 which has special pool rules specifying the completed interval must be located 330 feet from the exterior boundary of the applicable spacing unit. The proposed completed interval is projected as follows:

Surface – 230' FSL 2635' FWL Unit N Sec 1 T25S R29E  
First Take Point – 100' FNL 2225' FWL Unit C, Sec 12 T25S R29E  
Last Take Point – 100' FNL 2225' FWL Unit N, Sec 13 T25S R29E  
Bottom Hole – 20' FSL 2225' FWL Unit N, Sec 13 T25S R29E

The Horizontal Spacing Unit will be 1280-acres including the East ½ of section 11 and section 14 and the West ½ of Section 12 and Section 13, all located in T25S R29E. The defining well for the 1280-acre HSU Purple Sage Wolfcamp pool is the Corral Gorge 12-13 Federal Com 31H.

- The adjoining units which the unorthodox location encroaches are located to the North in T25S R29E, (HSU) Section 1 & 2 – Units L, K, J, I, M, N, O, P, which is operated by OXY.
- To the South the adjoining units which the unorthodox location encroaches are in T25S R29E, Section 24 & 25 – (HSU) Units D, C, E, F, L, K, M, N. which is operated by COG Production, LLC.
- HSU in Section 23 T 25S R29E – Units A, H, I, P, which is operated by COG Production, LLC.
- Lastly, the adjoining units which the unorthodox location encroaches located to the South in Section 23, T25S R29E also include Units B and G. (COG Production, LLC)

Approval of the unorthodox completed interval will allow for efficient spacing of horizontal wells and thereby prevent waste.

To support this request, the following information has been submitted for your review:

1. C-102 Plat for the proposed well and additional plats with offsetting well and affected spacing units.
2. List of affected offset parties in each adjoining spacing unit in the same pool or formation located closer to the unorthodox well location than the minimum distance prescribed by applicable rule or order, copies of the signed certified return receipts will be furnished upon request.
3. Statement from Oxy Development Manager.

If you need any additional information, please call me at 713-497-2492.

Sincerely,

A handwritten signature in blue ink that reads "Leslie Reeves".

Leslie Reeves  
Regulatory Analyst  
Attachments  
CC: Service List



## OXY USA Inc

5 Greenway Plaza, Suite 110  
Houston, TX 77046-0521

November 16, 2021

CERTIFIED MAIL – RETURN RECEIPT REQUESTED

Re: *Application for Administrative Approval of Non-Standard Location  
Corral Gorge 12-13 Federal Com 34H – Purple Sage Wolfcamp  
Surface – 230' FSL 2635' FWL Unit N Sec 1 T25S R29E  
First Take Point – 100' FNL 2225' FWL Unit C Sec 12 T25S R29E  
Last Take Point – 100' FSL 2225' FWL Unit N, Sec 13 T25S R29E  
Bottom Hole – 20' FSL 2225' FWL Unit N, Sec 13 T25S R29E  
Eddy County, New Mexico*

To Whom it May Concern:

Enclosed is a copy of an application, filed with the New Mexico Oil Conservation Division by OXY USA Inc., requesting administrative approval for a non-standard location. As an affected party, notice is being provided to you pursuant to Rule 19.15.4.12(A)(2)(a), 19.15.15.9(A) and 19.15.16.15(B). The well is located as follows:

Surface – 230' FSL 2635' FWL Unit N Sec 1 T25S R29E  
First Take Point – 100' FNL 2225' FWL Unit C Sec 12 T25S R29E  
Last Take Point – 100' FSL 2225' FWL Unit N, Sec 13 T25S R29E  
Bottom Hole – 20' FSL 2225' FWL Unit N, Sec 13 T25S R29E

If you object to the well's location, you must notify the Division in writing no later than 20 days from the date the application is received by the NMOCD (1220 South St. Francis Drive, Santa Fe, NM 87505; Attention: Leonard Lowe).

If you need any additional information, you can contact Hannah Eastwood at 720-929-6928 or myself at 713-497-2492.

Thank you,

A handwritten signature in blue ink, appearing to read "Leslie Reeves".

Leslie Reeves  
Regulatory Advisor  
OXY USA Inc.

DISTRICT I  
1625 N. FRENCH DR., HOBBS, NM 88240  
Phone: (575) 393-6161 Fax: (575) 393-0720

DISTRICT II  
811 S. FIRST ST., ARTESIA, NM 88210  
Phone: (575) 748-1283 Fax: (575) 748-9720

DISTRICT III  
1000 RIO BRAZOS RD., AZTEC, NM 87410  
Phone: (505) 334-6178 Fax: (505) 334-6170

DISTRICT IV  
1220 S. ST. FRANCIS DR., SANTA FE, NM 87505  
Phone: (505) 476-3460 Fax: (505) 476-3462

State of New Mexico  
Energy, Minerals & Natural Resources Department  
**OIL CONSERVATION DIVISION**  
1220 SOUTH ST. FRANCIS DR.  
Santa Fe, New Mexico 87505

Form C-102  
Revised August 1, 2011  
Submit one copy to appropriate  
District Office

☒ AMENDED REPORT

**WELL LOCATION AND ACREAGE DEDICATION PLAT**

API Number <b>30-015-47201</b>	Pool Code <b>98220</b>	Pool Name <b>PURPLE SAGE WOLFCAMP (GAS)</b>
Property Code <b>328295</b>	Property Name <b>CORRAL GORGE 12_13 FEDERAL COM</b>	Well Number <b>34H</b>
OGRID No. <b>16696</b>	Operator Name <b>OXY USA INC.</b>	Elevation <b>3110.6'</b>

**Surface Location**

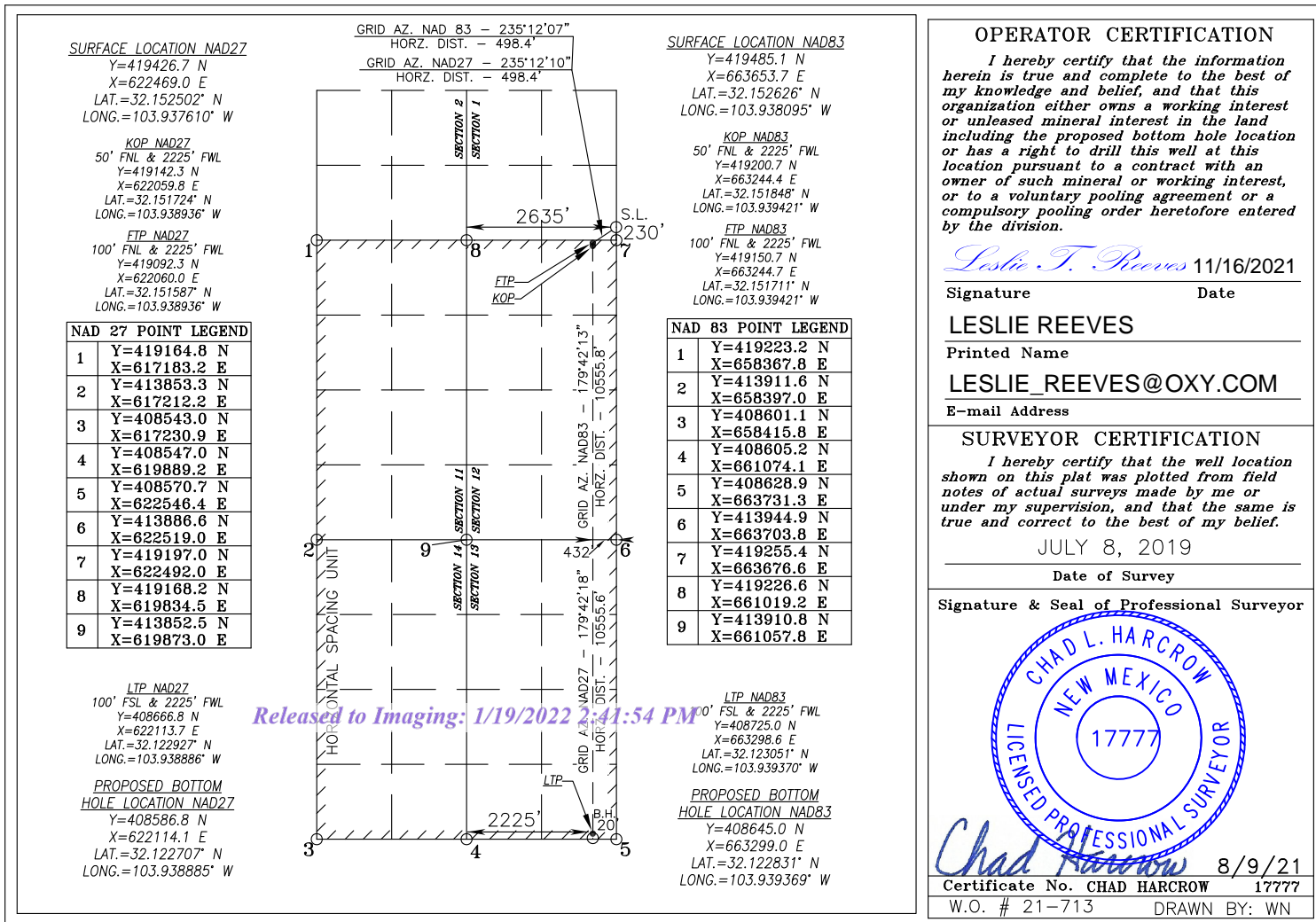
UL or lot No.	Section	Township	Range	Lot Idn	Feet from the	North/South line	Feet from the	East/West line	County
N	1	25-S	29-E		230	SOUTH	2635	WEST	EDDY

**Bottom Hole Location If Different From Surface**

UL or lot No.	Section	Township	Range	Lot Idn	Feet from the	North/South line	Feet from the	East/West line	County
N	13	25-S	29-E		20	SOUTH	2225	WEST	EDDY

Dedicated Acres <b>1280</b>	Joint or Infill	Consolidation Code	Order No.
--------------------------------	-----------------	--------------------	-----------

NO ALLOWABLE WILL BE ASSIGNED TO THIS COMPLETION UNTIL ALL INTERESTS HAVE BEEN CONSOLIDATED  
OR A NON-STANDARD UNIT HAS BEEN APPROVED BY THE DIVISION



Intent ☒ As Drilled ☐

API # <b>30-015-47201</b>		
Operator Name: <b>OXY USA Inc.</b>	Property Name: <b>Corral Gorge 12-13 Federal Com</b>	Well Number <b>34H</b>

## Kick Off Point (KOP)

UL <b>C</b>	Section <b>12</b>	Township <b>25S</b>	Range <b>29E</b>	Lot	Feet <b>50</b>	From N/S <b>FNL</b>	Feet <b>2225</b>	From E/W <b>FWL</b>	County <b>EDDY</b>
Latitude <b>32.151724</b>					Longitude <b>-103.938936</b>				NAD <b>NAD83</b>

## First Take Point (FTP)

UL <b>C</b>	Section <b>12</b>	Township <b>25S</b>	Range <b>29E</b>	Lot	Feet <b>100</b>	From N/S <b>FNL</b>	Feet <b>2225</b>	From E/W <b>FWL</b>	County <b>EDDY</b>
Latitude <b>32.151587</b>					Longitude <b>-103.938936</b>				NAD <b>NAD83</b>

## Last Take Point (LTP)

UL <b>N</b>	Section <b>13</b>	Township <b>25S</b>	Range <b>29E</b>	Lot	Feet <b>100</b>	From N/S <b>FSL</b>	Feet <b>2225</b>	From E/W <b>FWL</b>	County <b>EDDY</b>
Latitude <b>32.122927</b>					Longitude <b>-103.938886</b>				NAD <b>NAD83</b>

Is this well the defining well for the Horizontal Spacing Unit? ☐Is this well an infill well? ☐

If infill is yes please provide API if available, Operator Name and well number for Defining well for Horizontal Spacing Unit.

API # <b>30-015-47212</b>		
Operator Name: <b>OXY USA INC.</b>	Property Name: <b>CORRAL GORGE 12-13 FEDERAL COM</b>	Well Number <b>31H</b>

KZ 06/29/2018



Corral Gorge 12-13 Federal Com 34H





**Occidental Oil and Gas Corporation**  
**ATTN: Trey Fournier**  
**5 Greenway Plaza, Suite 110**  
**Houston, TX 77046**  
**832-291-5426**  
**Trey\_fournier@oxy.com**

November 17, 2021

Mr. Leonard Lowe  
New Mexico Oil Conservation Division  
1220 South Francis Drive  
Santa Fe, New Mexico 87505

RE: *Application for Nonstandard Location—Engineering Justification*  
*OXY USA Inc.*  
*Corral Gorge 12-13 Federal 34H*  
*T25S R29E, Section 11 & 14 – East 1/2, Eddy County*  
*T25S R29E Section 12 & 13 – West 1/2, Eddy County*

Dear Mr. Lowe:

Oxy USA Inc. respectfully seeks approval for a non-standard location, decreasing the first and last take point for Corral Gorge 12-13 Federal Com 34H in the Wolfcamp formation of the Purple Sage Pool from 330 feet to 100 feet. It is Oxy's responsibility as a prudent operator to maximize lateral length and minimize reserves left in the ground. Decreasing the first and last take point will increase this well's effective lateral length by 460 feet and increase the estimated ultimate recovery of the well by approximately 5%. Any increase in first or last take point would result in untapped reserves left in the reservoir, and waste of a resource that would otherwise go undeveloped.

Sincerely,

A handwritten signature in black ink, appearing to read "Trey Fournier", with a long horizontal flourish extending to the right.

Trey Fournier  
Development Manager

**Application Non-Standard Location - Service List**

**OXY USA Inc.**

**Corral Gorge 12-13 Federal Com #34H**

**Online Submission**

New Mexico Oil Conservation Division  
1220 South St. Francis Dr.  
Santa Fe, NM 87505

**Certified Mail # 7014 2120 0003 4372 3481**

Bureau of Land Management Carlsbad  
620 E. Greene Street  
Carlsbad, NM 88220-6292

**Certified Mail # 7014 2120 0003 4372 3498**

New Mexico State Land Office  
PO Box 1148  
Santa Fe, NM 87504

**Existing Horizontal Spacing Unit Section1 & 2 (T25S-R29E) - Units L, K, J, I, M, N, O, P (S 1/2 HSU)**

**Operator:**

OXY USA Inc.  
P.O. Box 50250  
Midland, TX 79710

**Certified Mail # 7014 2120 0003 4372 3511**

Contango Oil and Gas Company  
717 Texas Avenue, Suite 2900  
Houston, TX 77002  
Attn: Joy Caram

**Existing Horizontal Spacing Unit Section 24 (T25S-R29E) - Units D, C, E, F, L, K, M, N (W 1/2 HSU)**

**Certified Mail # 7019 0140 0000 3886 5019**

**COG Production, LLC**

**600 West Illinois Avenue**

Midland, TX 76701

Attn: Austin Kuenstler

Copies of this application were mailed to the following individuals, companies and organizations  
on or before November 17, 2021



---

Leslie Reeves, Regulatory Advisor  
OXY USA Inc.





## OXY USA Inc

5 Greenway Plaza, Suite 110  
Houston, TX 77046-0521

November 16, 2021

New Mexico Oil Conservation Division  
1220 South St. Francis Dr.  
Santa Fe, NM 87505

Attention: Leonard Lowe

Re: *Application for Administrative Approval of Non-Standard Location – 1280-acre HSU  
Corral Gorge 12-13 Federal Com 31H-38H, 311H – Purple Sage Wolfcamp  
Eddy County, New Mexico*

Dear Mr. Lowe:

OXY USA Inc. respectfully requests administrative approval of a non-standard location on the below list of Corral Gorge 12-13 Federal Com wells. The #31H well will be the defining well for the 1280-acre HSU and for the proposed completed wells in the Purple Sage Wolfcamp pool, Pool Code 98220. Attached is the well layout for the 1280-acre horizontal spacing unit for the Purple Sage Wolfcamp pool.

If you need any additional information, please call me at 713-497-2492.

Sincerely,

A handwritten signature in blue ink that reads "Leslie Reeves". The signature is fluid and cursive, with the first name "Leslie" being more prominent.

Leslie Reeves  
Regulatory Analyst

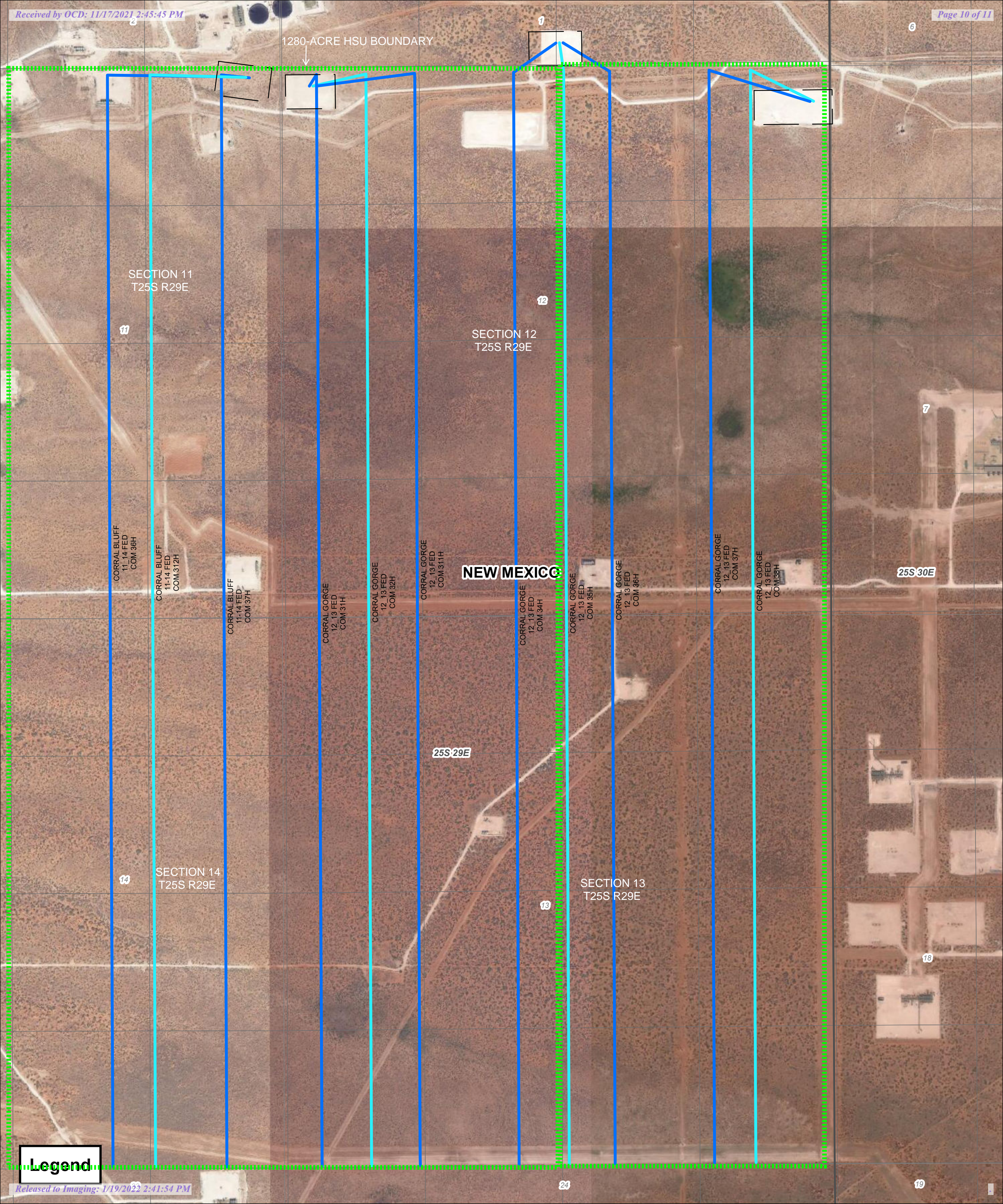
### Attachments

CC: Corral Gorge/Bluff Wolfcamp 1280-acre HSU Well Layout  
Corral Bluff 11-14 Federal Com 36H – 30-015-48024  
Corral Bluff 11-14 Federal Com 312H – 30-015-48029  
Corral Bluff 11-14 Federal Com 37H – 30-015-48025  
Corral Gorge 12-13 Federal Com 31H – 30-015-47212 (Defining well)  
Corral Gorge 12-13 Federal Com 32H – 30-015-47214  
Corral Gorge 12-13 Federal Com 311H – 30-015-47215  
Corral Gorge 12-13 Federal Com 34H – 30-015-47201

HSU East ½ Section 12 & 13, T25S, R29E

Corral Gorge 12-13 Federal Com 35H - 30-015-47205  
Corral Gorge 12-13 Federal Com 36H – 30-015-47206  
Corral Gorge 12-13 Federal Com 37H – 30-015-47207  
Corral Gorge 12-13 Federal Com 38H – 30-015- 47208







**District I**  
1625 N. French Dr., Hobbs, NM 88240  
Phone:(575) 393-6161 Fax:(575) 393-0720  
**District II**  
811 S. First St., Artesia, NM 88210  
Phone:(575) 748-1283 Fax:(575) 748-9720  
**District III**  
1000 Rio Brazos Rd., Aztec, NM 87410  
Phone:(505) 334-6178 Fax:(505) 334-6170  
**District IV**  
1220 S. St Francis Dr., Santa Fe, NM 87505  
Phone:(505) 476-3470 Fax:(505) 476-3462

**State of New Mexico**  
**Energy, Minerals and Natural Resources**  
**Oil Conservation Division**  
**1220 S. St Francis Dr.**  
**Santa Fe, NM 87505**

CONDITIONS  
  
Action 62339

CONDITIONS

Operator: OXY USA INC P.O. Box 4294 Houston, TX 772104294	OGRID: 16696
	Action Number: 62339
	Action Type: [UF-NSL] Non-Standard Location (NSL)

CONDITIONS

Created By	Condition	Condition Date
Ilowe	NSL - 8267 is approved.	1/19/2022