

District I

1625 N. French Drive, Hobbs, NM 88240

District II

811 S. First St., Artesia, NM 88210

District III

1000 Rio Brazos Road, Aztec, NM 87410

District IV1220 S. St Francis Dr, Santa Fe, NM
87505

State of New Mexico

Energy, Minerals and Natural Resources Department

Form C-107-B

Revised August 1, 2011

OIL CONSERVATION DIVISION1220 S. St Francis Drive
Santa Fe, New Mexico 87505

Submit the original application to the Santa Fe office with one copy to the appropriate District Office.

APPLICATION FOR SURFACE COMMINGLING (DIVERSE OWNERSHIP)

OPERATOR NAME: Mewbourne Oil Company

OPERATOR ADDRESS: 4801 Business Park BLVD PO Box 5270 Hobbs NM 88240

APPLICATION TYPE:

☐ Pool Commingling ☒ Lease Commingling ☐ Pool and Lease Commingling ☐ Off-Lease Storage and Measurement (Only if not Surface Commingled)
LEASE TYPE: ☐ Fee ☒ State ☐ FederalIs this an Amendment to existing Order? ☐ Yes ☒ No If "Yes", please include the appropriate Order No. _____Have the Bureau of Land Management (BLM) and State Land office (SLO) been notified in writing of the proposed commingling
☒ Yes ☐ No**(A) POOL COMMINGLING**

Please attach sheets with the following information

(1) Pool Names and Codes	Gravities / BTU of Non-Commingle Production	Calculated Gravities / BTU of Commingled Production		Calculated Value of Commingled Production	Volumes

(2) Are any wells producing at top allowables? ☐ Yes ☐ No(3) Has all interest owners been notified by certified mail of the proposed commingling? ☐ Yes ☐ No.(4) Measurement type: ☐ Metering ☐ Other (Specify)(5) Will commingling decrease the value of production? ☐ Yes ☐ No If "yes", describe why commingling should be approved**(B) LEASE COMMINGLING**

Please attach sheets with the following information

(1) Pool Name and Code.

(2) Is all production from same source of supply? ☒ Yes ☐ No(3) Has all interest owners been notified by certified mail of the proposed commingling? ☒ Yes ☐ No(4) Measurement type: ☒ Metering ☐ Other (Specify)**(C) POOL and LEASE COMMINGLING**

Please attach sheets with the following information

(1) Complete Sections A and E.

(D) OFF-LEASE STORAGE and MEASUREMENT

Please attached sheets with the following information

(1) Is all production from same source of supply? ☐ Yes ☐ No

(2) Include proof of notice to all interest owners.

(E) ADDITIONAL INFORMATION (for all application types)

Please attach sheets with the following information

(1) A schematic diagram of facility, including legal location.

(2) A plat with lease boundaries showing all well and facility locations. Include lease numbers if Federal or State lands are involved.

(3) Lease Names, Lease and Well Numbers, and API Numbers.

I hereby certify that the information above is true and complete to the best of my knowledge and belief.

SIGNATURE: _____ TITLE: Regulatory Specialist DATE: 11/2/2021

TYPE OR PRINT NAME: Chad Cole TELEPHONE NO.: 575-393-5905

E-MAIL ADDRESS: ccole@mewbourne.com

Well Name	Location	API #	Pool #	State Leases	MCFPD	Dry BTU @ 14.73 PSI
Parkchester 24/23 B2AD State Com 1H	225' FNL & 205' FEL, Sec 24, T19S, R28E	30-015-46061	[55510] Scanlon Draw; Bone Spring	160 Acres E050730005 40 Acres E051360002 120 Acres E051360004	~3000	~1250
Parkchester 24/23 B2HE State Com 1H	1860' FNL & 205' FEL, Sec 24, T19S, R28E	30-015-47311	[55510] Scanlon Draw; Bone Spring	160 Acres E050730005 120 Acres E051360002 40 Acres E051360004	~3000	~1250
Parkchester 24/23 B2IL State Com 1H	1200' FSL & 205' FEL, Sec 24, T19S, R28E	30-015-48345	[55510] Scanlon Draw; Bone Spring	160 Acres E050730005 120 Acres E051360002 40 Acres E051360004	~3000	~1250
Parkchester 24/23 B2PM State Com 1H	1170' FSL & 205' FEL, Sec 24, T19S, R28E	30-015-48346	[55510] Scanlon Draw; Bone Spring	160 Acres E050730005 120 Acres E051360002 40 Acres E051360004	~3000	~1250
Parkchester 24/23 B3AD State Com 2H	225' FNL & 205' FEL, Sec 24, T19S, R28E	30-015-46062	[55510] Scanlon Draw; Bone Spring	160 Acres E050730005 40 Acres E051360002 120 Acres E051360004	~3000	~1250
Parkchester 24/23 B3HE State Com 2H	1890' FNL & 205' FEL, Sec 24, T19S, R28E	30-015-47310	[55510] Scanlon Draw; Bone Spring	160 Acres E050730005 120 Acres E051360002 40 Acres E051360004	~3000	~1250

Well Name	Location	API #	Pool #	State Leases	MCFPD	Dry BTU @ 14.73 PSI
Rattlesnake 13/18 B2LK State Com 1H	2130' FSL & 205' FWL, Sec 13, T19S, R28E	30-015-45272	[55510] Scanlon Draw; Bone Spring	160 Acres E076680002 40 Acres L063670004 40 Acres LG39680004	~3000	~1250
Rattlesnake 13/18 B3LK State Com 1H	2100' FSL & 205' FWL, Sec 13, T19S, R28E	30-015-45273	[55510] Scanlon Draw; Bone Spring	160 Acres E076680002 40 Acres L063670004 40 Acres LG39680004	~3000	~1250
Rattlesnake 13/18 B2MN State Com 1H	2070' FSL & 205' FWL, Sec 13, T19S, R28E	30-015-46641	[55510] Scanlon Draw; Bone Spring	80 Acres OG07840003 80 Acres OG07840002 40 Acres L063670004 40 Acres LG39680004	~3000	~1250

MEWBOURNE OIL COMPANY

4801 Business Park Blvd

Hobbs, NM 88240

575-393-5905

November 2, 2021

Engineering Bureau
New Mexico Oil Conservation Division
1220 S. St. Francis Drive
Santa Fe, NM 87505

Bureau of Land Management
620 E. Greene Street
Carlsbad, NM 88220-6292

Commissioner of Public Lands
Attn: Commingle Manager
PO Box 1148
Santa Fe, NM 87504-1148


RE: Application for State Lease Commingle

To: Whom It May Concern

Mewbourne Oil Company ("Mewbourne") is requesting permission to surface commingle gas production from nine wells located on State leases (E050730005, E051360002, E051360004, E076680002, L063670004, LG39680004, OG07840003, & OG07840002) which comprise portions of sections 13, 18, 24, & 23, T19S, R28E, Eddy County, New Mexico. All gas production from each well is to be combined and measured by a EFS Gas Meter #68736 located in the SWSW of said section 13, T19S, R28E. Information detailing each well is attached.

Please find the following enclosed:

- Cover Letter
- Commingle Summary Page
- Form C102 of wells & battery
- Detailed Maps: lease boundaries & facility locations
- Application Checklist
- Form C-107B
- Copy of letter sent certified to all involved parties
- List of all involved parties

Signed: 
Printed Name: Chad Cole
Title: Regulatory Specialist
Date: 11/2/2021

APPLICATION FOR LEASE COMMINGLING, (GAS)**Commingling procedure for Parkchester & Rattlesnake leases:**

Mewbourne Oil Company is requesting approval for lease commingling gas production from 9 wells located on State leases below to a common gas meter (EFS MM #68736):

Well Name	Location	API #	Pool #	State Leases	MCFPD	Dry BTU @ 14.73 PSI
Parkchester 24/23 B2AD State Com 1H	225' FNL & 205' FEL, Sec 24, T19S, R28E	30-015-46061	[55510] Scanlon Draw; Bone Spring	160 Acres E050730005 40 Acres E051360002 120 Acres E051360004	~3000	~1250
Parkchester 24/23 B2HE State Com 1H	1860' FNL & 205' FEL, Sec 24, T19S, R28E	30-015-47311	[55510] Scanlon Draw; Bone Spring	160 Acres E050730005 120 Acres E051360002 40 Acres E051360004	~3000	~1250
Parkchester 24/23 B2IL State Com 1H	1200' FSL & 205' FEL, Sec 24, T19S, R28E	30-015-48345	[55510] Scanlon Draw; Bone Spring	160 Acres E050730005 120 Acres E051360002 40 Acres E051360004	~3000	~1250
Parkchester 24/23 B2PM State Com 1H	1170' FSL & 205' FEL, Sec 24, T19S, R28E	30-015-48346	[55510] Scanlon Draw; Bone Spring	160 Acres E050730005 120 Acres E051360002 40 Acres E051360004	~3000	~1250
Parkchester 24/23 B3AD State Com 2H	255' FNL & 205' FEL, Sec 24, T19S, R28E	30-015-46062	[55510] Scanlon Draw; Bone Spring	160 Acres E050730005 40 Acres E051360002 120 Acres E051360004	~3000	~1250
Parkchester 24/23 B3HE State Com 2H	1890' FNL & 205' FEL, Sec 24, T19S, R28E	30-015-47310	[55510] Scanlon Draw; Bone Spring	160 Acres E050730005 120 Acres E051360002 40 Acres E051360004	~3000	~1250

Well Name	Location	API #	Pool #	State Leases	MCFPD	Dry BTU @ 14.73 PSI
Rattlesnake 13/18 B2LK State Com 1H	2130' FSL & 205' FWL, Sec 13, T19S, R28E	30-015-45272	[55510] Scanlon Draw; Bone Spring	160 Acres E076680002 40 Acres L063670004 40 Acres LG39680004	~3000	~1250
Rattlesnake 13/18 B3LK State Com 1H	2100' FSL & 205' FWL, Sec 13, T19S, R28E	30-015-45273	[55510] Scanlon Draw; Bone Spring	160 Acres E076680002 40 Acres L063670004 40 Acres LG39680004	~3000	~1250
Rattlesnake 13/18 B2MN State Com 1H	2070' FSL & 205' FWL, Sec 13, T19S, R28E	30-015-46641	[55510] Scanlon Draw; Bone Spring	80 Acres OG07840003 80 Acres OG07840002 40 Acres L063670004 40 Acres LG39680004	~3000	~1250

Gas Metering:

Gas volumes from each well producing to these batteries will be determined by using an allocation gas meter after the separator at the facility for each well. The gas production from the wells listed above will be measured, commingled, and then sold on lease using the 24 hr. well test method.

An existing Enterprise gas sales meter (MM #68736) is in the SWSW of Section 13, T19S, R28E, Eddy Co. This meter is calibrated on a regular basis per API, NMOCD and BLM specifications.

Process and Flow Descriptions:

The flow of production is shown in detail on the enclosed facility diagram and map which shows lease boundaries, wells, battery, & MM location. The commingling of production is in the interest of conservation and waste and will result in the most effective economic means of producing the reserves in place from the affected wells and will not result in reduced royalty or improper measurement of production.

Working, royalty, & overriding interest owners have been notified of the proposal via certified mail (see attached).

Signed: 

Printed Name: Chad Cole

Title: Regulatory Specialist

Date: 11/2/2021

Economic Justification

Well Name	Oil Gravity @ 60°	Value/bbl	MCFPD	Dry BTU @ 14.73 PSI	Value/MCF
Parkchester 24/23 B2AD State Com 1H	48	\$82	~3000	~1250	\$2.50
Parkchester 24/23 B2HE State Com 1H	48	\$82	~3000	~1250	\$2.50
Parkchester 24/23 B2IL State Com 1H	48	\$82	~3000	~1250	\$2.50
Parkchester 24/23 B2PM State Com 1H	48	\$82	~3000	~1250	\$2.50
Parkchester 24/23 B3AD State Com 2H	48	\$82	~3000	~1250	\$2.50
Parkchester 24/23 B3HE State Com 2H	48	\$82	~3000	~1250	\$2.50
Rattlesnake 13/18 B2LK State Com 1H	48	\$82	~3000	~1250	\$2.50
Rattlesnake 13/18 B3LK State Com 1H	48	\$82	~3000	~1250	\$2.50
Rattlesnake 13/18 B2MN State Com 1H	48	\$82	~3000	~1250	\$2.50
CTB Combined	48	\$82	~27,000	1250	\$2.50

Process and Flow Descriptions:

The flow of production is shown in detail on the enclosed facility diagram and map which shows lease boundaries, wells, and battery location. The commingling of production is in the interest of conservation and waste and will result in the most effective economic means of producing the reserves in place from the affected wells and will not result in reduced royalty or improper measurement of production.

Working, royalty, & overriding interest owners have been notified of the proposal via certified mail (see attached).

Signed: 

Printed Name: Chad Cole

Title: Regulatory Specialist

Date: 11/2/2021

District I
1625 N. French Dr., Hobbs, NM 88240
Phone: (575) 393-6161 Fax: (575) 393-4720
District II
811 S. First St., Artesia, NM 88210
Phone: (575) 746-1261 Fax: (575) 746-9720
District III
1000 Rio Grande Road, Aztec, NM 87410
Phone: (505) 334-6178 Fax: (505) 334-6170
District IV
1220 S. St. Francis Dr., Santa Fe, NM 87505
Phone: (505) 476-3460 Fax: (505) 476-3462

State of New Mexico
Energy, Minerals & Natural Resources Department
OIL CONSERVATION DIVISION
1220 South St. Francis Dr.
Santa Fe, NM 87505

Form C-102
Revised August 1, 2011
Submit one copy to appropriate
District Office

☐ AMENDED REPORT

WELL LOCATION AND ACREAGE DEDICATION PLAT

1 API Number		2 Pool Code		3 Pool Name	
4 Property Code		5 Property Name PARKCHESTER 24/23 B2AD STATE COM			6 Well Number 1H
7 CGRID NO.		8 Operator Name MEWBOURNE OIL COMPANY			9 Elevation 3378'
10 Surface Location					
UL or lot no. A	Section 24	Township 19S	Range 28E	Lot Idn	Feet from the 225
				North/South line NORTH	Feet from the 205
				East/West line EAST	County EDDY
11 Bottom Hole Location If Different From Surface					
UL or lot no. D	Section 23	Township 19S	Range 28E	Lot Idn	Feet from the 400
				North/South line NORTH	Feet from the 100
				East/West line WEST	County EDDY
12 Dedicated Acres		13 Joint or Infill		14 Consolidation Code	
				15 Order No.	

No allowable will be assigned to this completion until all interest have been consolidated or a non-standard unit has been approved by the division.

16. GEOGRAPHIC DATA NAD 83 GRID - NM EAST SURFACE LOCATION N: 601422.2 - E: 606189.6 LAT: 32.6531801° N LONG: 104.1226178° W BOTTOM HOLE N: 601138.7 - E: 598081.8 LAT: 32.6524515° N LONG: 104.1554609° W			CORNER DATA NAD 83 GRID - NM EAST A: FOUND BRASS CAP "1941" N: 598258.7 - E: 595984.2 B: FOUND BRASS CAP "1941" N: 598897.7 - E: 595983.6 C: FOUND BRASS CAP "1941" N: 601937.8 - E: 593981.6 D: FOUND BRASS CAP "1941" N: 601586.9 - E: 598579.0 E: FOUND BRASS CAP "1941" N: 601577.8 - E: 601175.4 F: FOUND BRASS CAP "1941" N: 601613.1 - E: 603784.4			G: FOUND BRASS CAP "1941" N: 601650.1 - E: 606394.2 H: FOUND BRASS CAP "1941" N: 598897.4 - E: 606397.9 I: FOUND BRASS CAP "1941" N: 598349.6 - E: 606403.0 J: FOUND BRASS CAP "1941" N: 596322.3 - E: 603791.7 K: FOUND BRASS CAP "1941" N: 598295.7 - E: 601180.7 L: FOUND BRASS CAP "1941" N: 598837.0 - E: 601179.9			17 OPERATOR CERTIFICATION I hereby certify that the information contained herein is true and complete to the best of my knowledge and belief, and that this organization either owns a working interest or a substantial interest in the land including the proposed bottom hole location or has a right to drill this well at this location pursuant to a contract with the owner of such a mineral or uniting interest or to a voluntary pooling agreement or a compulsory pooling order heretofore entered by the division. Signature _____ Date _____ Printed Name _____ Email Address _____		
			18 SURVEYOR CERTIFICATION I hereby certify that the well location shown on this plat was plotted from field notes of actual surveys made by me or under my supervision, and that the same is true and correct to the best of my belief. 11-26-2018 Date of Survey: Signature and Seal of Surveyor: ROBERT M. HOWETT NEW MEXICO 19680 PROFESSIONAL SURVEYOR 19680 Certificate Number Job No: LS18111281								

District I
1625 N. French Dr., Hobbs, NM 88240
Phone: (575) 393-6161 Fax: (575) 393-6720

District II
811 S. First St., Artesia, NM 86210
Phone: (575) 746-1261 Fax: (575) 746-9720

District III
1000 Rio Huerfano Road, Aztec, NM 87410
Phone: (505) 334-1178 Fax: (505) 334-6170

District IV
1220 S. St. Francis Dr., Santa Fe, NM 87505
Phone: (505) 476-4601 Fax: (505) 476-3602

State of New Mexico
Energy, Minerals & Natural Resources Department
OIL CONSERVATION DIVISION
1220 South St. Francis Dr.
Santa Fe, NM 87505

Form C-102
Revised August 1, 2011
Submit one copy to appropriate
District Office

☐ AMENDED REPORT

WELL LOCATION AND ACREAGE DEDICATION PLAT

1 API Number		2 Pool Code		3 Pool Name	
4 Property Code		5 Property Name PARKCHESTER 24/23 B3AD STATE COM			6 Well Number 2H
7 GRID NUL		8 Operator Name MEWBOURNE OIL COMPANY			9 Elevation 3379'

" Surface Location

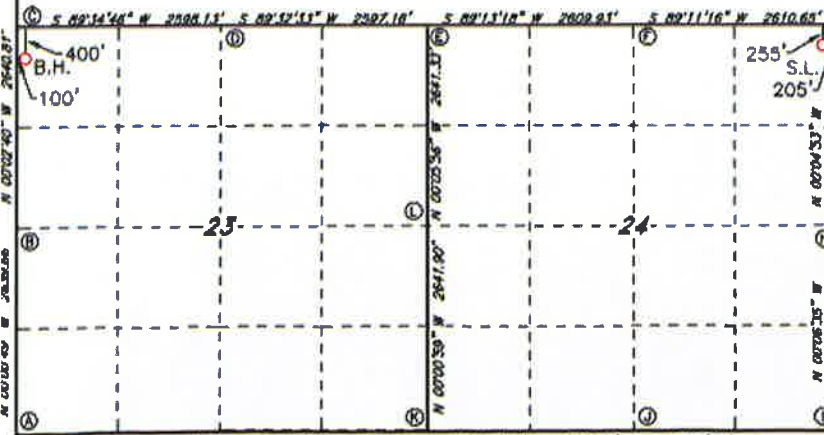
UL or lot no.	Section	Township	Range	Lot Idn	Feet from the	North/South line	Feet From the	East/West line	County
A	24	19S	28E		265	NORTH	205	EAST	EDDY

¹ Bottom Hole Location If Different From Surface

U/L or lot no.	Section	Township	Range	Lot Idn	Feet from the	North/South line	Feet from the	East/West line	County
D	23	19S	28E		400	NORTH	100	WEST	EDDY

12. Dedicated Assets	13. Joint or Infill	14. Consolidation Code	15. Utrler No.
----------------------	---------------------	------------------------	----------------

No allowable will be assigned to this completion until all interest have been consolidated or a non-standard unit has been approved by the division.

GEODETIC DATA		CORNER DATA		G: FOUND BRASS CAP "1941"		H: OPERATOR CERTIFICATION	
NAD 83 GRID - NM EAST		NAD 83 GRID - NM EAST		M: 601630.1 - E: 606394.2		I hereby certify that the information contained herein is true and complete to the best of my knowledge and belief, and that this representation either creates no new interest or intended material interest in the land included by the proposed boundary description, or has a right to nullify itself as to the location pertinent to a contract with its owner if such material or similar interest, or an additional pending agreement or a compulsory pending order hereinafter entered by the division.	
SURFACE LOCATION N: 601392.3 - E: 606189.8		A: FOUND BRASS CAP "1941" N: 596258.7 - E: 595984.2		H: FOUND BRASS CAP "1941" N: 598987.4 - E: 606397.9			
LAT: 32.6030877° N LONG: 104.1228179° W		B: FOUND BRASS CAP "1941" N: 598887.7 - E: 595983.6		I: FOUND BRASS CAP "1941" N: 598349.6 - E: 606403.0			
BOTTOM HOLE N: 601138.7 - E: 595981.8		C: FOUND BRASS CAP "1941" N: 601537.8 - E: 595981.6		J: FOUND BRASS CAP "1941" N: 596322.3 - E: 603791.7			
LAT: 32.6524515° N LONG: 104.1564608° W		D: FOUND BRASS CAP "1941" N: 601558.9 - E: 598679.0		K: FOUND BRASS CAP "1941" N: 596295.7 - E: 601180.7			
		E: FOUND BRASS CAP "1941" N: 601577.8 - E: 601175.4		L: FOUND BRASS CAP "1941" N: 598837.0 - E: 601179.9			
		F: FOUND BRASS CAP "1941" N: 601613.1 - E: 603784.4				Signature _____ Date _____	
						Printed Name _____	
						E-mail Address _____	
 <p>The survey map shows a rectangular area divided into four quadrants by dashed lines. Corners are labeled A through L. Bearings and distances are provided for each corner relative to the previous one. For example, from A to B: S 89°14'48" W 2589.15'. From B to C: S 89°52'13" W 2297.18'. From C to D: S 89°13'18" W 2802.91'. From D to E: S 89°11'16" W 2610.65'. From E to F: S 89°00'59" W 2641.90". From F to G: S 89°00'53" W 2633.37'. From G to H: S 89°00'53" W 2633.37'. From H to I: S 89°00'53" W 2633.37'. From I to J: S 89°00'53" W 2633.37'. From J to K: S 89°00'53" W 2633.37'. From K to L: S 89°00'53" W 2633.37'. From L to M: S 89°00'53" W 2633.37'. From M to N: S 89°00'53" W 2633.37'. From N to O: S 89°00'53" W 2633.37'. From O to P: S 89°00'53" W 2633.37'. From P to Q: S 89°00'53" W 2633.37'. From Q to R: S 89°00'53" W 2633.37'. From R to S: S 89°00'53" W 2633.37'. From S to T: S 89°00'53" W 2633.37'. From T to U: S 89°00'53" W 2633.37'. From U to V: S 89°00'53" W 2633.37'. From V to W: S 89°00'53" W 2633.37'. From W to X: S 89°00'53" W 2633.37'. From X to Y: S 89°00'53" W 2633.37'. From Y to Z: S 89°00'53" W 2633.37'. From Z to AA: S 89°00'53" W 2633.37'. From AA to AB: S 89°00'53" W 2633.37'. From AB to AC: S 89°00'53" W 2633.37'. From AC to AD: S 89°00'53" W 2633.37'. From AD to AE: S 89°00'53" W 2633.37'. From AE to AF: S 89°00'53" W 2633.37'. From AF to AG: S 89°00'53" W 2633.37'. From AG to AH: S 89°00'53" W 2633.37'. From AH to AI: S 89°00'53" W 2633.37'. From AI to AJ: S 89°00'53" W 2633.37'. From AJ to AK: S 89°00'53" W 2633.37'. From AK to AL: S 89°00'53" W 2633.37'. From AL to AM: S 89°00'53" W 2633.37'. From AM to AN: S 89°00'53" W 2633.37'. From AN to AO: S 89°00'53" W 2633.37'. From AO to AP: S 89°00'53" W 2633.37'. From AP to AQ: S 89°00'53" W 2633.37'. From AQ to AR: S 89°00'53" W 2633.37'. From AR to AS: S 89°00'53" W 2633.37'. From AS to AT: S 89°00'53" W 2633.37'. From AT to AU: S 89°00'53" W 2633.37'. From AU to AV: S 89°00'53" W 2633.37'. From AV to AW: S 89°00'53" W 2633.37'. From AW to AX: S 89°00'53" W 2633.37'. From AX to AY: S 89°00'53" W 2633.37'. From AY to AZ: S 89°00'53" W 2633.37'. From AZ to BA: S 89°00'53" W 2633.37'. From BA to BB: S 89°00'53" W 2633.37'. From BB to BC: S 89°00'53" W 2633.37'. From BC to BD: S 89°00'53" W 2633.37'. From BD to BE: S 89°00'53" W 2633.37'. From BE to BF: S 89°00'53" W 2633.37'. From BF to BG: S 89°00'53" W 2633.37'. From BG to BH: S 89°00'53" W 2633.37'. From BH to BI: S 89°00'53" W 2633.37'. From BI to BJ: S 89°00'53" W 2633.37'. From BJ to BK: S 89°00'53" W 2633.37'. From BK to BL: S 89°00'53" W 2633.37'. From BL to BM: S 89°00'53" W 2633.37'. From BM to BN: S 89°00'53" W 2633.37'. From BN to BO: S 89°00'53" W 2633.37'. From BO to BP: S 89°00'53" W 2633.37'. From BP to BQ: S 89°00'53" W 2633.37'. From BQ to BR: S 89°00'53" W 2633.37'. From BR to BS: S 89°00'53" W 2633.37'. From BS to BT: S 89°00'53" W 2633.37'. From BT to BU: S 89°00'53" W 2633.37'. From BU to BV: S 89°00'53" W 2633.37'. From BV to BW: S 89°00'53" W 2633.37'. From BW to BX: S 89°00'53" W 2633.37'. From BX to BY: S 89°00'53" W 2633.37'. From BY to BZ: S 89°00'53" W 2633.37'. From BZ to CA: S 89°00'53" W 2633.37'. From CA to CB: S 89°00'53" W 2633.37'. From CB to CC: S 89°00'53" W 2633.37'. From CC to CD: S 89°00'53" W 2633.37'. From CD to CE: S 89°00'53" W 2633.37'. From CE to CF: S 89°00'53" W 2633.37'. From CF to CG: S 89°00'53" W 2633.37'. From CG to CH: S 89°00'53" W 2633.37'. From CH to CI: S 89°00'53" W 2633.37'. From CI to CJ: S 89°00'53" W 2633.37'. From CJ to CK: S 89°00'53" W 2633.37'. From CK to CL: S 89°00'53" W 2633.37'. From CL to CM: S 89°00'53" W 2633.37'. From CM to CN: S 89°00'53" W 2633.37'. From CN to CO: S 89°00'53" W 2633.37'. From CO to CP: S 89°00'53" W 2633.37'. From CP to CQ: S 89°00'53" W 2633.37'. From CQ to CR: S 89°00'53" W 2633.37'. From CR to CS: S 89°00'53" W 2633.37'. From CS to CT: S 89°00'53" W 2633.37'. From CT to CU: S 89°00'53" W 2633.37'. From CU to CV: S 89°00'53" W 2633</p>							

District I
1625 N. French Dr., Hobbs, NM 88240
Phone: (575) 393-6161 Fax: (575) 393-0729

District II
411 S. First St., Artesia, NM 88210
Phone: (575) 746-1281 Fax: (575) 746-9720

District III
1990 Rio Hondo Road, Aztec, NM 87410
Phone: (505) 334-6176 Fax: (505) 334-6170

District IV
1220 S. St. Francis Dr., Santa Fe, NM 87505
Phone: (505) 476-4600 Fax: (505) 476-3462

State of New Mexico
Energy, Minerals & Natural Resources Division
OIL CONSERVATION DIVISION
1220 South St. Francis Dr.
Santa Fe, NM 87505

Form C-102
Revised August 1, 2011
Submit one copy to appropriate
District Office

☐ AMENDED REPORT

WELL LOCATION AND ACREAGE DEDICATION PLAT

1 API Number		2 Pool Code		3 Pool Name	
4 Property Code		5 Property Name PARKCHESTER 24/23 B2HE STATE COM			6 Well Number 1H
7 OGRD NO.		8 Operator Name MEWBOURNE OIL COMPANY			9 Elevation 3380'

10 Surface Location

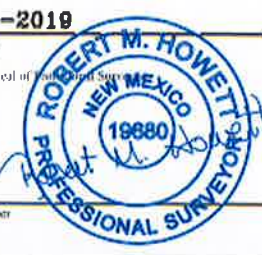
UL or lot no.	Section	Township	Range	Lot Idn	Feet from the	North/South line	Feet from the	East/West line	County
H	24	19S	28E		1860	NORTH	205	EAST	EDDY

11 Bottom Hole Location If Different From Surface

UL or lot no.	Section	Township	Range	Lot Idn	Feet from the	North/South line	Feet from the	East/West line	County
E	23	19S	28E		1880	NORTH	100	WEST	EDDY

12 Dedicated Acres	13 Joint or Infill	14 Consolidation Code	15 Order No.
--------------------	--------------------	-----------------------	--------------

No allowable will be assigned to this completion until all interest have been consolidated or a non-standard unit has been approved by the division.

<p>COMMON DATA MAD 63 GRID - NM EAST</p> <p>DEODETIC DATA MAD 63 GRID - NM EAST</p> <p>SURFACE LOCATION N: 599707.6 - E: 606191.9 LAT: 32.8488889° N LONG: 104.1228208° W</p> <p>BOTTOM HOLE N: 599659.0 - E: 595083.0 LAT: 32.8483844° N LONG: 104.1364853° W</p>		<p>OPERATOR CERTIFICATION I hereby certify that the approximate contained herein is true and complete to the best of my knowledge and belief, and that this organization either owns or has a working interest in, or has a right to use, the land as being the proposed bottom hole location or has a right to drill only as may be most pertinent to a correct completion of such a proposed well, and that interest, or in a voluntary pooling agreement or a compulsory pooling order heretofore entered by the division.</p> <p>Signature: _____ Date: _____</p> <p>Printed Name: _____</p> <p>Email Address: _____</p>	
<p>12 SURVEYOR CERTIFICATION I hereby certify that the well location shown on this plat was plotted from field notes of actual surveys made by me or under my supervision, and that the same is true and correct to the best of my belief.</p> <p>12-11-2019 Date of Survey</p> <p>Signature and Seal of Professional Surveyor: </p> <p>19880 Certificate Number</p>		<p>RRC-Job No: L519121141</p>	

District I
1625 N. French Dr., Hobbs, NM 88240
Phone: (575) 393-6561 Fax: (575) 393-0720
District II
331 S. First St., Artesia, NM 88210
Phone: (575) 748-1283 Fax: (575) 748-9720
District III
1000 San Marcos Road, Aztec, NM 87410
Phone: (505) 334-6178 Fax: (505) 334-6170
District IV
1220 S. St. Francis Dr., Santa Fe, NM 87505
Phone: (505) 476-1460 Fax: (505) 476-5462

State of New Mexico
Energy, Minerals & Natural Resources Department
OIL CONSERVATION DIVISION
1220 South St. Francis Dr.
Santa Fe, NM 87505

Form C-102
Revised August 1, 2011
Submit one copy to appropriate
District Office

☐ AMENDED REPORT

WELL LOCATION AND ACREAGE DEDICATION PLAT

1 API Number	2 Pool Code	3 Pool Name
4 Property Code	5 Property Name PARKCHESTER 24/23 B2IL STATE COM	6 Well Number 1H
7 OGRID NO.	8 Operator Name MEWBORNE OIL COMPANY	9 Elevation 3382'

10 Surface Location


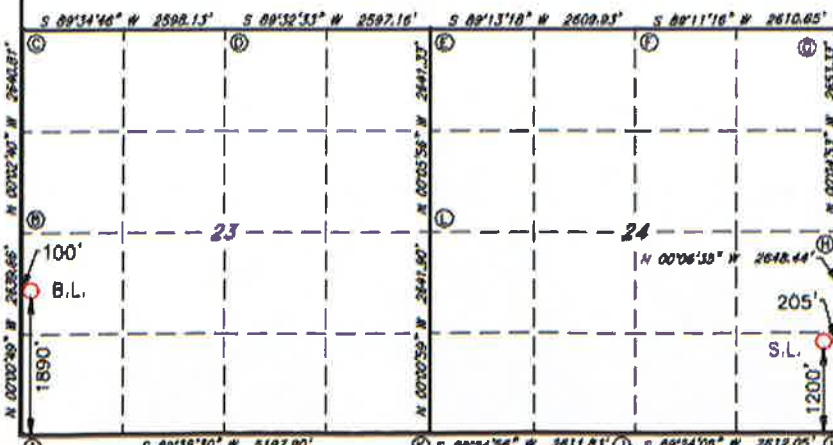
1/4 or lot no.	Section	Township	Range	Lot Idn	Feet from the	North/South line	Feet from the	East/West line	County
P	24	19S	28E		1200	SOUTH	205	EAST	EDDY

11 Bottom Hole Location If Different From Surface

1/4 or lot no.	Section	Township	Range	Lot Idn	Feet from the	North/South line	Feet from the	East/West line	County
L	23	19S	28E		1890	SOUTH	100	WEST	EDDY

12 Dedicated Acres	13 Joint or Infill	14 Consolidation Code	15 Order No.

No allowable will be assigned to this completion until all interest have been consolidated or a non-standard unit has been approved by the division.

<p>16 GEOGETIC DATA NAD 83 GRID - NM EAST SURFACE LOCATION N 597547.2 - E 506198.8 LAT: 32.842828° N LONG: 104.1228228° W BOTTOM HOLE N 506148.9 - E 598083.1 LAT: 32.8442336° N LONG: 104.1554710° W</p>	<p>17 CORNER DATA NAD 83 GRID - NM EAST A: FOUND BRASS CAP "1941" N 598258.7 - E 595984.2 B: FOUND BRASS CAP "1941" N 598887.7 - E 593883.8 C: FOUND BRASS CAP "1941" N 601837.8 - E 593981.6 D: FOUND BRASS CAP "1941" N 601858.8 - E 598879.0 E: FOUND BRASS CAP "1941" N 601577.6 - E 601178.4 F: FOUND BRASS CAP "1941" N 601615.1 - E 603784.4 G: FOUND BRASS CAP "1941" N 601650.1 - E 608394.2</p>	<p>H: FOUND BRASS CAP "1941" N 598987.4 - E 606387.0 I: FOUND BRASS CAP "1941" N 598348.8 - E 608403.0 J: FOUND BRASS CAP "1941" N 598322.3 - E 603791.7 K: FOUND BRASS CAP "1941" N 598285.7 - E 601180.7 L: FOUND BRASS CAP "1941" N 598937.0 - E 601178.9</p>	<p>18 OPERATOR CERTIFICATION I hereby certify that the information contained herein is true and complete to the best of my knowledge and belief, and that this organization either owns a working interest or undivided mineral interest in the land including the proposed bottom hole location or has a right to drill this well at this location pursuant to a contract with an owner of such a mineral or working interest or to a voluntary pooling agreement or a compulsory pooling order heretofore entered by the division.</p> <p>Signature: _____ Date: _____</p> <p>Printed Name: _____</p> <p>E-mail Address: _____</p>
<p>19 SURVEYOR CERTIFICATION I hereby certify that the well location shown on this plat was plotted from field notes of actual surveys made by me or under my supervision, and that the same is true and correct to the best of my belief.</p> <p>4-25-18 Date of Survey</p> <p>Signature and Seal of Surveyor: </p> <p>19680 Certificate Number</p> <p>REV: BH & SL MOVE-4/1/21</p> <p>Job No.: LS1804523R</p>			<p>20</p> 

District I1625 N. French Dr., Hobbs, NM 88240
Phone: (505) 393-6161 Fax: (505) 393-6120**District II**801 S. First St., Artesia, NM 88210
Phone: (505) 748-9283 Fax: (505) 748-9220**District III**1000 Rio Hondo Blvd., Aztec, NM 87410
Phone: (505) 334-6678 Fax: (505) 334-6670**District IV**1220 S. St. Francis Dr., Santa Fe, NM 87505
Phone: (505) 476-3468 Fax: (505) 476-3462

State of New Mexico
Energy, Minerals & Natural Resources Department
OIL CONSERVATION DIVISION
1220 South St. Francis Dr.
Santa Fe, NM 87505

Form C-102

Revised August 1, 2011

Submit one copy to appropriate

District Office

☐ AMENDED REPORT**WELL LOCATION AND ACREAGE DEDICATION PLAT**

1 API Number	2 Pool Code	3 Pool Name
4 Property Code	5 Property Name PARKCHESTER 24/23 B2PM STATE COM	6 Well Number 1H
7 OGRID NO.	8 Operator Name MEWBOURNE OIL COMPANY	9 Elevation 3381'

10 Surface Location

UL or lot no.	Section	Township	Range	Lot Idn	Feet from the	North/South line	Feet from the	East/West line	County
P	24	19S	28E		1170	SOUTH	205	EAST	EDDY

11 Bottom Hole Location If Different From Surface

UL or lot no.	Section	Township	Range	Lot Idn	Feet from the	North/South line	Feet from the	East/West line	County
M	23	19S	28E		500	SOUTH	100	WEST	EDDY

12 Dedicated Acres	13 Joint or Infill	14 Consolidation Code	15 Order No.

No allowable will be assigned to this completion until all interest have been consolidated or a non-standard unit has been approved by the division.

GEOLOGIC DATA NAD 83 GRID - NM EAST SURFACE LOCATION N 597517.2 - E 606195.8 LAT: 32.8424483° N LONG: 104.1228227° W BOTTOM HOLE N 598759.3 - E 598084.1 LAT: 32.8404138° N LONG: 104.1354774° W	CORNER DATA NAD 83 GRID - NM EAST A: FOUND BRASS CAP "1941" N 598258.7 - E 595984.2 B: FOUND BRASS CAP "1941" N 598897.7 - E 593883.6 C: FOUND BRASS CAP "1941" N 601837.6 - E 598881.6 D: FOUND BRASS CAP "1941" N 601558.9 - E 598578.0 E: FOUND BRASS CAP "1941" N 601577.6 - E 601175.4 F: FOUND BRASS CAP "1941" N 601613.1 - E 603784.4 G: FOUND BRASS CAP "1941" N 601850.1 - E 608394.2	H: FOUND BRASS CAP "1941" N 598897.4 - E 608397.8 I: FOUND BRASS CAP "1941" N 598348.6 - E 606403.0 J: FOUND BRASS CAP "1941" N 598322.3 - E 603791.7 K: FOUND BRASS CAP "1941" N 598295.7 - E 601180.7 L: FOUND BRASS CAP "1941" N 598937.0 - E 601179.9	10 OPERATOR CERTIFICATION I hereby certify that the information contained herein is true and complete to the best of my knowledge and belief, and that this organization either owns a working interest or a mineral interest in the land including the proposed bottom hole location or has a right to drill this well or the bottom hole location to a contract with an owner of such a mineral or working interest, or to a royalty pooling agreement or a compulsory pooling order hereinafter entered by the division. Signature: _____ Date: _____ Printed Name: _____ E-mail Address: _____
			11 SURVEYOR CERTIFICATION I hereby certify that the well location shown on this plat was plotted from field notes of actual surveys made by me or under my supervision, and that the same is true and correct to the best of my belief. 4-25-18 Date of Survey Signature and Seal of Professional Surveyor: 19880 Certificate Number REV: BH & SL MOVE-4/1/21 Job No.: LS1804524R

District I
1625 N. French Dr., Hobbs, NM 88240
Phone: (505) 393-6161 Fax: (505) 393-0720

District II
811 S. First St., Artesia, NM 88210
Phone: (505) 744-1283 Fax: (505) 744-9720

District III
1000 Rio Uraos Road, Aztec, NM 87410
Phone: (505) 334-6178 Fax: (505) 334-6170

District IV
1220 S. St. Francis Dr., Santa Fe, NM 87505
Phone: (505) 476-4460 Fax: (505) 476-3462

State of New Mexico
Energy, Minerals & Natural Resources Department
OIL CONSERVATION DIVISION
1220 South St. Francis Dr.
Santa Fe, NM 87505

Form C-102
Revised August 1, 2011
Submit one copy to appropriate
District Office

☐ AMENDED REPORT

WELL LOCATION AND ACREAGE DEDICATION PLAT

1 API Number		2 Pool Code		3 Pool Name	
4 Property Code		5 Property Name PARKCHESTER 24/23 B3HE STATE COM			6 Well Number 2H
7 GRID NO.		8 Operator Name MEWBOURNE OIL COMPANY			9 Elevation 3379'

10 Surface Location									
UL or lot no.	Section	Township	Range	Lat. Lon.	Feet from the	North-South line	Feet from the	East-West line	County
H	24	19S	28E		1890	NORTH	205	EAST	EDDY

11 Bottom Hole Location If Different From Surface									
UL or lot no.	Section	Township	Range	Lat. Lon.	Feet from the	North-South line	Feet from the	East-West line	County
E	23	19S	28E		1880	NORTH	100	WEST	EDDY

12 Dedicated Acres	13 Joint or Infill	14 Consolidation Code	15 Order No.
--------------------	--------------------	-----------------------	--------------

No allowable will be assigned to this completion until all interest have been consolidated or a non-standard unit has been approved by the division.

<p>RECORDING DATA MAO B3 GRID - NM EAST N: 599757.5 - E: 606101.8 LAT: 32.8488043° N LONG: 104.1228211° W</p> <p>SURFACE LOCATION LAT: 32.8488043° N LONG: 104.1228211° W</p> <p>BOTTOM HOLE LAT: 32.8483844° N LONG: 104.1354833° W</p>		<p>CORNER DATA MAO B3 GRID - NM EAST</p> <p>A: FOUND BRASS CAP "1941" N: 598258.7 - E: 595984.2</p> <p>B: FOUND BRASS CAP "1941" N: 598897.7 - E: 595983.0</p> <p>C: FOUND BRASS CAP "1941" N: 601537.6 - E: 595981.0</p> <p>D: FOUND BRASS CAP "1941" N: 601558.8 - E: 598579.0</p> <p>E: FOUND BRASS CAP "1941" N: 601377.6 - E: 601178.4</p> <p>F: FOUND BRASS CAP "1941" N: 601613.1 - E: 603784.4</p> <p>G: FOUND BRASS CAP "1941" N: 601650.1 - E: 606394.2</p> <p>H: FOUND BRASS CAP "1941" N: 598897.4 - E: 606397.9</p> <p>I: FOUND BRASS CAP "1941" N: 598349.8 - E: 606403.0</p> <p>J: FOUND BRASS CAP "1941" N: 598322.3 - E: 603791.7</p> <p>K: FOUND BRASS CAP "1941" N: 598295.7 - E: 601180.7</p> <p>L: FOUND BRASS CAP "1941" N: 606637.0 - E: 601179.0</p>	<p>OPERATOR CERTIFICATION I hereby certify that the information contained herein is true and complete to the best of my knowledge and belief, and that this organization either owns, is working interest in, or has a contractual interest in the land including the proposed bottom hole location or has a right to drill this well or wells located pursuant to a lease or other agreement or such a mineral or working interest, or to a voluntary pooling agreement or a compulsory pooling order heretofore entered by the division.</p> <p>Signature: _____ Date: _____</p> <p>Printed Name: _____</p> <p>Email Address: _____</p>
<p>"SURVEYOR CERTIFICATION" I hereby certify that the well location shown on this plat was plotted from field notes of actual surveys made by me or under my supervision, and that the same is true and correct to the best of my belief.</p> <p>12-11-2019 Date of Survey</p> <p>Signature and Seal of Professional Surveyor</p> <p>19680 Certificate Number</p>		<p>PROF. ROBERT M. HOWETT NEW MEXICO 19680 PROFESSIONAL SURVEYOR</p>	

RRC-Job No: LS19121140

District I
1625 N. French Dr., Hobbs, NM 88240
Phone: (505) 393-6161 Fax: (505) 393-0720

District II
811 S. First St., Artesia, NM 88210
Phone: (505) 746-1281 Fax: (505) 746-9720

District III
1000 Rio Diaz Road, Aztec, NM 87410
Phone: (505) 334-6178 Fax: (505) 334-6170

District IV
1220 S. St. Francis Dr., Santa Fe, NM 87505
Phone: (505) 476-1460 Fax: (505) 476-3462

State of New Mexico
Energy, Minerals & Natural Resources Department
OIL CONSERVATION DIVISION
1220 South St. Francis Dr.
Santa Fe, NM 87505


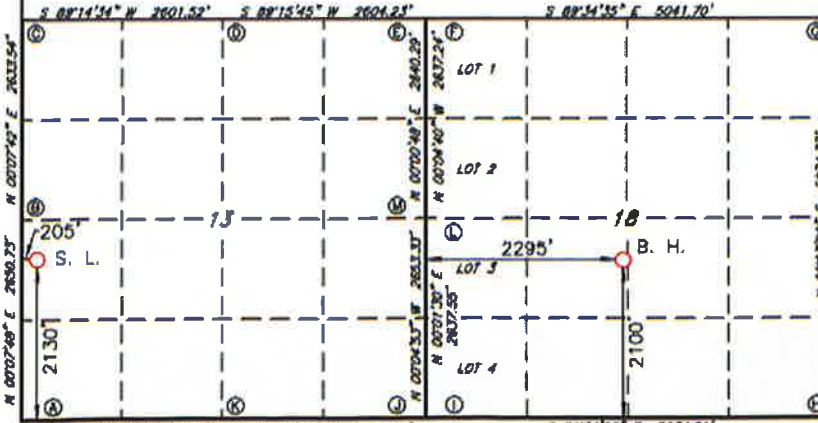
Form C-102
Revised August 1, 2011
Submit one copy to appropriate
District Office

☐ AMENDED REPORT

WELL LOCATION AND ACREAGE DEDICATION PLAT

1 API Number		2 Pool Code		3 Pool Name	
4 Property Code		5 Property Name RATTLESNAKE 13/18 B2LK STATE COM			
6 Well Number 1H		7 Operator Name MEWBOURNE OIL COMPANY			
8 Elevation 3387'					
9 Surface Location					
UL or lot no. L	Section 13	Township 19S	Range 28E	Lot Idn	Feet from the 2130
North/South line SOUTH		Feet from the 205		East/West line WEST	
County EDDY					
10 Bottom Hole Location If Different From Surface					
UL or lot no. K	Section 18	Township 19S	Range 29E	Lot Idn	Feet from the 2100
North/South line SOUTH		Feet from the 2295		East/West line WEST	
County EDDY					
11 Dedicated Acres		12 Joint or Infill		13 Consolidation Code	
14 Order No.					

No allowable will be assigned to this completion until all interest have been consolidated or a non-standard unit has been approved by the division.

10 DEODETIC DATA NAD 83 GRID - NM EAST SURFACE LOCATION N 603709.9 - E 601385.2 LAT: 32.659493° N LONG: 104.138214° W BOTTOM HOLE N 603719.4 - E 606886.7 LAT: 32.660480° N LONG: 104.114478° W		11 CORNER DATA NAD 83 GRID - NM EAST A: FOUND BRASS CAP "1941" N 601877.6 - E 601178.4 B: FOUND BRASS CAP "1941" N 604227.7 - E 601181.4 C: FOUND BRASS CAP "1941" N 606860.8 - E 601187.3 D: FOUND BRASS CAP "1941" N 606894.0 - E 603787.9 E: FOUND BRASS CAP "1941" N 606828.4 - E 606391.3 F: FOUND BRASS CAP "1941" N 606810.2 - E 606391.8 G: FOUND 8"x8"x5" LIMESTONE ROCK N 606873.0 - E 611431.9		12 OPERATOR CERTIFICATION I hereby certify that the information contained herein is true and complete to the best of my knowledge and belief, and that this organization either owns or is working on the surface or subsurface interest in the land including the proposed bottom hole location or has a right to drill into well in this location pursuant to a contract with the owner of such interest or according to an agreement with a voluntary pooling agreement or a compulsory pooling order heretofore entered by the district. Signature _____ Date _____ Printed Name _____ E-mail Address _____	
13 SURVEYOR CERTIFICATION I hereby certify that the well location shown on this plat was plotted from field notes of actual surveys made by me or under my supervision, and that the same is true and correct to the best of my belief. Date of Survey 4-25-18 Signature and Seal of Professional Surveyor  Certificate Number 19680 REV. 9/20/18 B.H. MOVE		14  Job No.: LS1804529			

District I
1675 N. French Dr., Hobbs, NM 88240
Phone: (575) 393-6161 Fax: (575) 393-6720

District II
611 S. First St., Artesia, NM 88210
Phone: (575) 746-1281 Fax: (575) 746-9720

District III
1009 Rio Huerfano Road, Aztec, NM 87410
Phone: (505) 334-1178 Fax: (505) 334-6170

District IV
1220 S. St. Francis Dr., Santa Fe, NM 87505
Phone: (505) 476-1460 Fax: (505) 476-5462

State of New Mexico
Energy, Minerals & Natural Resources Department
OIL CONSERVATION DIVISION
1220 South St. Francis Dr.
Santa Fe, NM 87505

Form C-102
Revised August 1, 2011
Submit one copy to appropriate
District Office

☐ AMENDED REPORT

WELL LOCATION AND ACREAGE DEDICATION PLAT

1 API Number		2 Pool Code		3 Pool Name	
4 Property Code		5 Property Name RATTLESNAKE 13/18 B3LK STATE COM			6 Well Number 1H
7 (X) (R) ID NO.		8 Operator Name MEWBORNE OIL COMPANY			9 Elevation 3388'

10 Surface Location

UL or lot no.	Section	Township	Range	Lot Idn	Feet from the	North/South line	Feet from the	East/West line	County
L	13	19S	28E		2100	SOUTH	205	WEST	EDDY

11 Bottom Hole Location If Different From Surface

UL or lot no.	Section	Township	Range	Lot Idn	Feet from the	North/South line	Feet from the	East/West line	County
K	18	19S	29E		2100	SOUTH	2295	WEST	EDDY

12 Dedicated Acres	13 Joint or Infill	14 Consolidation Code	15 Order No.

No allowable will be assigned to this completion until all interest have been consolidated or a non-standard unit has been approved by the division.

GEODETIC DATA NAD 83 GRID - NM EAST SURFACE LOCATION N 603679.9 - E 601365.0 LAT: 32.8594109° N LONG: 104.1382149° W BOTTOM HOLE N 603719.4 - E 600689.7 LAT: 32.8594803° N LONG: 104.1144789° W		CORNER DATA NAD 83 GRID - NM EAST A: FOUND BRASS CAP "1941" N 601577.6 - E 601175.4 B: FOUND BRASS CAP "1941" N 604227.7 - E 601181.4 C: FOUND BRASS CAP "1941" N 606860.5 - E 601187.3 D: FOUND BRASS CAP "1941" N 606894.9 - E 603787.9 E: FOUND BRASS CAP "1941" N 606926.4 - E 606391.3 F: FOUND BRASS CAP "1941" N 606910.2 - E 606391.6 G: FOUND 8"x8"x10" LIMESTONE ROCK N 606873.0 - E 611431.9 H: FOUND 1/2" REBAR N 601599.9 - E 611427.2 I: FOUND BRASS CAP "1941" N 601636.7 - E 606394.0 J: FOUND BRASS CAP "1941" N 601650.1 - E 606394.2 K: FOUND BRASS CAP "1941" N 601613.1 - E 603784.4 L: FOUND BRASS CAP "1941" N 604273.6 - E 606395.1 M: FOUND BRASS CAP "1941" N 604289.7 - E 606394.8		OPERATOR CERTIFICATION I hereby certify that the information contained herein is true and complete to the best of my knowledge and belief, and that this certification under no circumstances, in any or subsequent future, shall constitute an admission of liability for any damages or loss of any kind resulting from the use of this plat, and that the operator of this well is not responsible for any damages or loss of any kind resulting from the use of this plat, and that the operator of this well is not responsible for any damages or loss of any kind resulting from the use of this plat.	
		SURVEYOR CERTIFICATION I hereby certify that the well location shown on this plat was plotted from field notes of actual surveys made by me or under my supervision, and that the same is true and correct to the best of my belief.			
Signature _____ Date _____ Printed Name _____ Email Address _____		Date of Survey 4-25-18 Signature and Seal of Professional Surveyor ROBERT M. HOWETT 19880 Certificate Number REV. 9/20/18 B.H. MOVE			

District I
1625 N. French Dr., Hobbs, NM 88240
Phone: (575) 393-6161 Fax: (575) 393-0720

District II
811 S. First St., Artesia, NM 88210
Phone: (575) 746-1283 Fax: (575) 746-9720

District III
1600 Rio Huerfano Road, Aztec, NM 87410
Phone: (505) 334-6178 Fax: (505) 334-6170

District IV
1220 S. St. Francis Dr., Santa Fe, NM 87505
Phone: (505) 476-1460 Fax: (505) 476-3462

State of New Mexico
Energy, Minerals & Natural Resources Department
OIL CONSERVATION DIVISION
1220 South St. Francis Dr.
Santa Fe, NM 87505

Form C-102
Revised August 1, 2011
Submit one copy to appropriate
District Office

☐ AMENDED REPORT

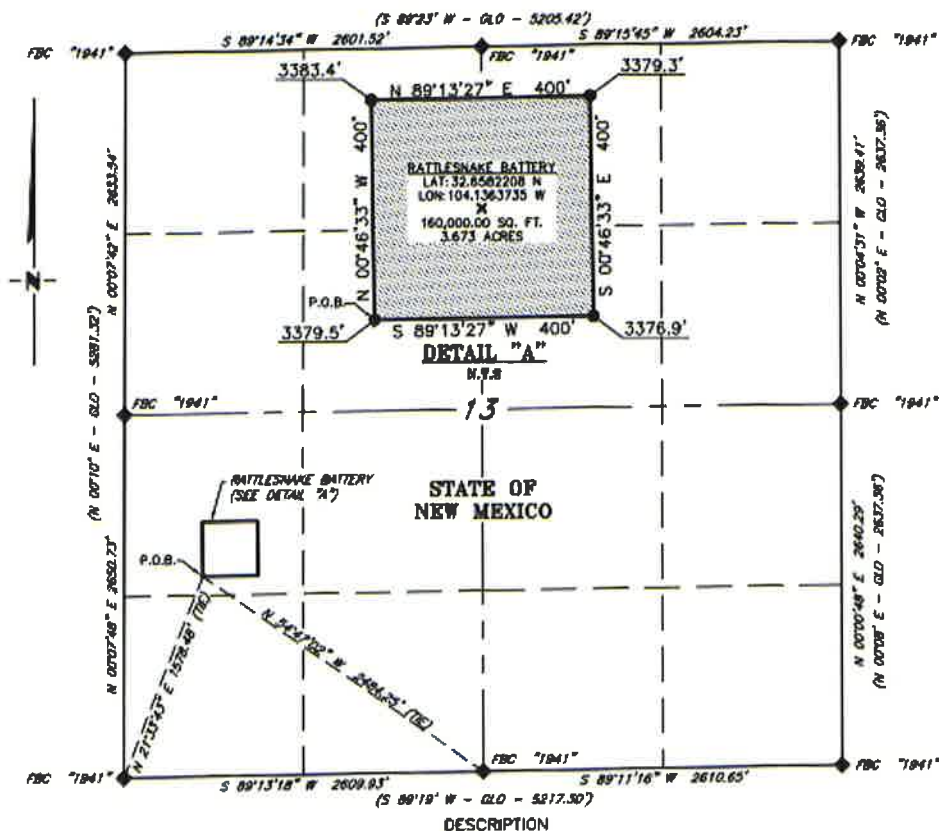
WELL LOCATION AND ACREAGE DEDICATION PLAT

1 API Number		2 Pool Code		3 Pool Name	
4 Property Code		5 Property Name RATTLESNAKE 13/18 B3MN STATE COM			
6 Well Number 1H		7 Operator Name MEWBORNE OIL COMPANY			
8 Uplift No.		9 Uplift No.			
10 Surface Location					
U/L or lot no. L	Section 13	Township 19S	Range 28E	Lot Idn	Feet from the 2070
				North/South line SOUTH	Feet from the 205
				East/West line WEST	County EDDY
11 Bottom Hole Location If Different From Surface					
U/L or lot no. N	Section 18	Township 19S	Range 29E	Lot Idn	Feet from the 660
				North/South line SOUTH	Feet from the 2295
				East/West line WEST	County EDDY
12 Dedicated Acres		13 Joint or Infill		14 Consolidation Code	
				15 Order No.	

No allowable will be assigned to this completion until all interest have been consolidated or a non-standard unit has been approved by the division.

<p>DEED DATA NAD 83 GRID - NM EAST N: 603649.9 - E: 601385.0</p> <p>SURFACE LOCATION LAT: 32.6593287° N LONG: 104.1382153° W</p> <p>BOTTOM HOLE N: 602279.0 - E: 606660.5 LAT: 32.6656133° N LONG: 104.1144927° W</p> <p>CORNER DATA NAD 83 GRID - NM EAST A: FOUND BRASS CAP "1941" N: 601577.8 - E: 601175.4 B: FOUND BRASS CAP "1941" N: 604227.7 - E: 601181.4 C: FOUND BRASS CAP "1941" N: 606660.5 - E: 601187.3 D: FOUND BRASS CAP "1941" N: 606660.5 - E: 603787.9 E: FOUND BRASS CAP "1941" N: 606628.4 - E: 606391.3 F: FOUND 8"x8" LIMESTONE ROCK N: 606673.0 - E: 611431.0 G: FOUND 1/2" REBAR N: 601599.9 - E: 611427.2 H: FOUND BRASS CAP "1941" N: 601638.7 - E: 606394.0 I: FOUND BRASS CAP "1941" N: 601613.1 - E: 603784.4 J: FOUND BRASS CAP "1941" N: 606610.2 - E: 606391.8 K: FOUND BRASS CAP "1941" N: 604289.7 - E: 606394.8 L: FOUND BRASS CAP "1941" N: 604273.8 - E: 606395.1 M: FOUND BRASS CAP "1941" N: 601660.1 - E: 606394.2</p>		<p>12 OPERATOR CERTIFICATION I hereby certify that the information contained herein is true and complete to the best of my knowledge and belief, and that my organization either owns or has a controlling interest in, and is not a subsidiary of, the land as being the proposed bottom hole location or has a right to drill into, with or without permission from the state, with or without such a mineral or mining interest, or to a voluntary pooling agreement or a compulsory pooling order heretofore entered by the division.</p> <p>Signature _____ Date _____</p> <p>Printed Name _____</p> <p>Printed Address _____</p>
<p>13 SURVEYOR CERTIFICATION I hereby certify that the well location shown on this plat was plotted from field notes of actual surveys made by me or under my supervision, and that the same is true and correct to the best of my belief.</p> <p>11-04-2019 Date of Survey</p> <p>Signature and Seal of _____</p> <p>19680 Certificate Number</p>		<p>14 JOB NO. LS19101059</p>

PROPOSED BATTERY FOR THE RATTLESNAKE 13/18 STATE COM WELLS
SECTION 13, T19S, R28E,
N. M. P. M., EDDY CO., NEW MEXICO



A tract of land situated in Section 13, Township 19 South, Range 28 East, N. M. P. M., Eddy County, New Mexico, across State of New Mexico land, and being more particularly described by metes and bounds as follows:

BEGINNING at a point, which bears N 54°47'02" W, 2,484.25 feet, from a brass cap, stamped "1941", found for the South quarter corner of Section 13 and bears N 21°33'43" E, 1,578.48 feet from a brass cap, stamped "1941", found for the Southwest corner of Section 13;

Thence N 00°46'33" W, 400 feet, to a point;

Thence N 89°13'27" E, 400 feet, to a point;

Thence S 00°46'33" E, 400 feet, to a point;

Thence S 89°13'27" W, 400 feet, to the Point of Beginning.

Said tract of land contains 160,000.00 square feet or 3.673 acres, more or less and is allocated by forties as follows:

NW 1/4 SW 1/4 160,000.00 Sq. Ft. 3.673 Acres

SCALE: 1" = 1000'
 0 500' 1000'

BEARINGS ARE GRID AND 83
 NM EAST
 DISTANCES ARE HORIZ. GROUND.

LEGEND

() RECORD DATA - GLO
 FOUND MONUMENT
 AS NOTED

◆ P.O.B. POINT OF BEGINNING

I, R. M. Howett, a N. M. Professional Surveyor, hereby certify that I prepared this plat from an actual survey made on the ground under my direct supervision, said survey and plat meet the Min. Stds. for Land Surveying in the State of N. M. and are true and correct to the best of my knowledge and belief.

Robert M. Howett NM PS 19680



Copyright 2016 - All Rights Reserved

NO.	REVISION	DATE
JOB NO.:	LS19101059	
DWG. NO.:	19101059-6	

RRC

701 S. CECIL ST., MOBBES, NM 88240 (575) 964-8200

SCALE: 1" = 1000'
DATE: 11-04-2019
SURVEYED BY: ML/MF
DRAWN BY: KAKN
APPROVED BY: RMH
SHEET: 1 OF 1

The map displays a grid of 16 sections, labeled A through P. The sections are arranged in a 4x4 grid. The legend identifies the following symbols:

- 30-015-46061
- 30-015-46062
- 30-015-47311
- 30-015-47310
- 30-015-48345
- 30-015-48346

The map also shows the following lines:

- E051360004
- E051360005
- E050230005
- E071360005

A north arrow is located in the top left corner, and a scale bar (0 to 1 mile) is located in the top right corner. A 'CTB' label is present in the top right corner.

30-015-45272

30-015-45273

30-015-46641

Gas Meter
#68736
(32.6537387, -104.1371231)

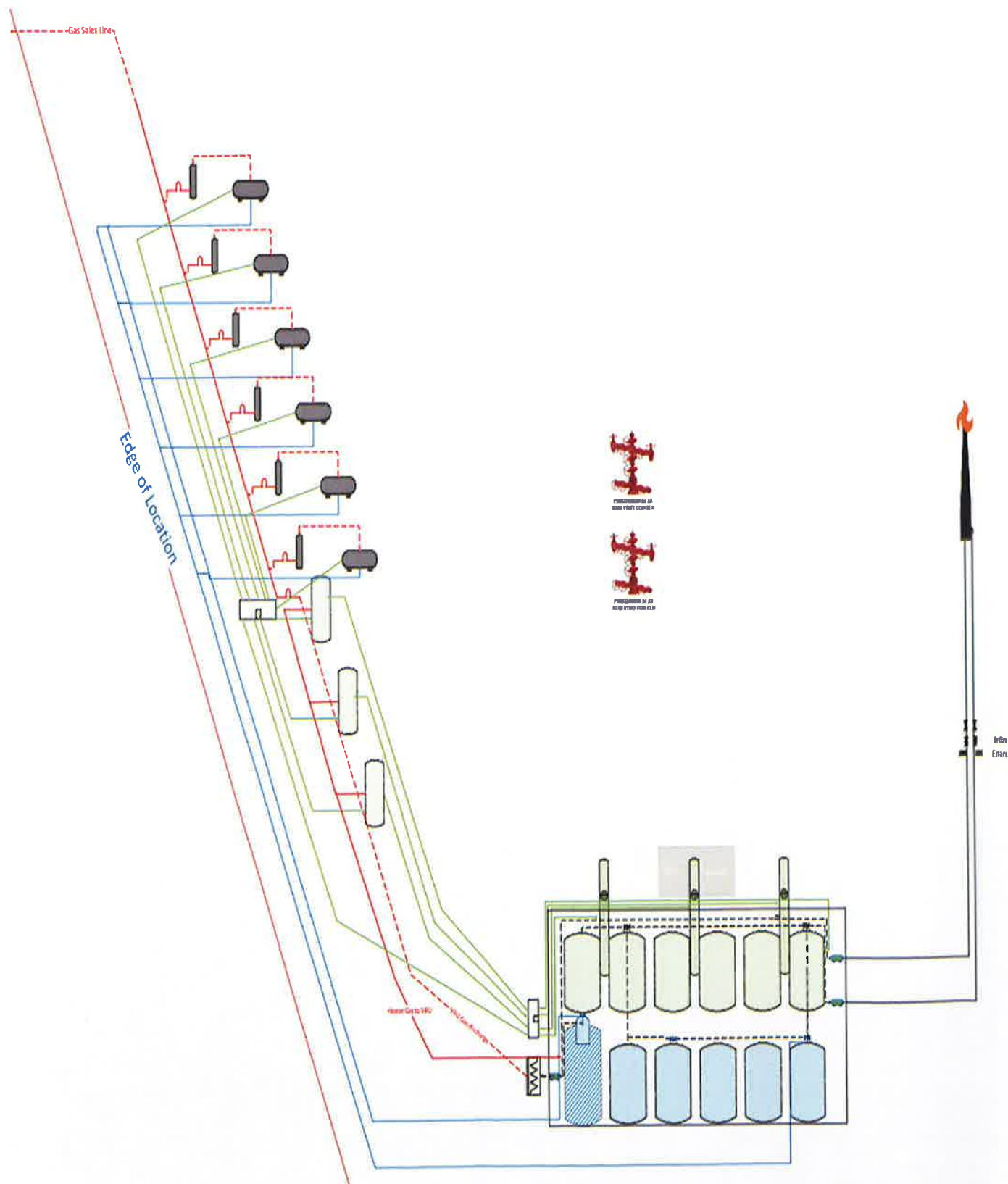
Parkchester/Rattlesnake Google Earth Maps







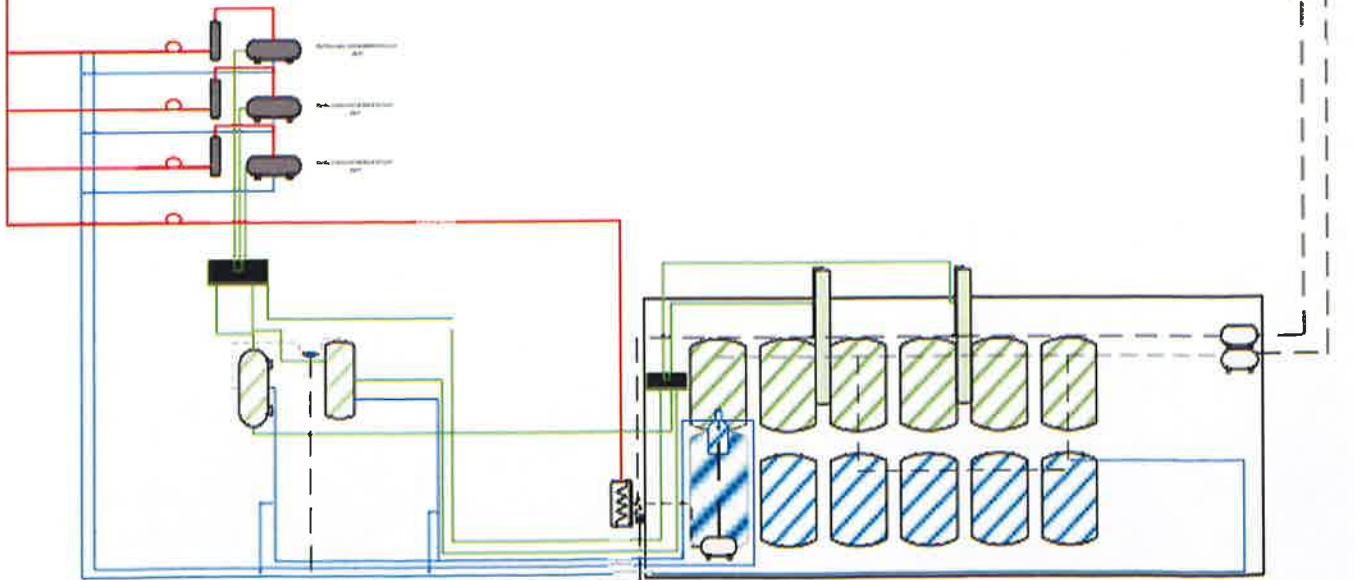
Parkchester Facility Diagram



Rattlesnake Facility Diagram



Facility Diagram	
Operator	Mewbourne Oil Company
Facility Name	Rattlesnake 13/18 B2LK State Com #1H Battery
Facility Location	NW/4 Sec 13, T19S, R 28E, Eddy Co, NM
Wells in Facility	API
Rattlesnake 13/18 B2LK St Com #1H	30-015-45272
Rattlesnake 13/18 B2LK St Com #1H	30-015-45273
Rattlesnake 13/18 B2LK St Com #1H	30-015-46641



DATE IN	SUSPENSE	ENGINEER	LOGGED IN	TYPE	APP NO.
---------	----------	----------	-----------	------	---------

ABOVE THIS LINE FOR DIVISION USE ONLY

NEW MEXICO OIL CONSERVATION DIVISION

- Engineering Bureau -



ADMINISTRATIVE APPLICATION CHECKLIST

THIS CHECKLIST IS MANDATORY FOR ALL ADMINISTRATIVE APPLICATIONS FOR EXCEPTIONS TO DIVISION RULES AND REGULATIONS

WHICH REQUIRE PROCESSING AT THE DIVISION LEVEL IN SANTA FE

Application Acronyms:

[NSL-Non-Standard Location] [NSP-Non-Standard Proration Unit] [SD-Simultaneous Dedication]

[DHC-Downhole Commingling] [CTB-Lease Commingling] [PLC-Pool/Lease Commingling]

[PC-Pool Commingling] [OLS - Off-Lease Storage] [OLM-Off-Lease Measurement]

[WFX-Waterflood Expansion] [PMX-Pressure Maintenance Expansion]

[SWD-Salt Water Disposal] [IPI-Injection Pressure Increase]

[EOR-Qualified Enhanced Oil Recovery Certification] [PPR-Positive Production Response]

[1] TYPE OF APPLICATION - Check Those Which Apply for [A]

[A] Location - Spacing Unit - Simultaneous Dedication
☐ NSL ☐ NSP ☐ SD

Check One Only for [B] or [C]

[B] Commingling - Storage - Measurement
☐ DHC ☐ CTB ☒ PLC ☐ PC ☐ OLS ☐ OLM

[C] Injection - Disposal - Pressure Increase - Enhanced Oil Recovery
☐ WFX ☐ PMX ☐ SWD ☐ IPI ☐ EOR ☐ PPR

[D] Other: Specify _____

[2] NOTIFICATION REQUIRED TO: - Check Those Which Apply, or ☐ Does Not Apply

[A] ☒ Working, Royalty or Overriding Royalty Interest Owners

[B] ☐ Offset Operators, Leaseholders or Surface Owner

[C] ☐ Application is One Which Requires Published Legal Notice

[D] ☒ Notification and/or Concurrent Approval by BLM or SLO
 U.S. Bureau of Land Management - Commissioner of Public Lands, State Land Office

[E] ☐ For all of the above, Proof of Notification or Publication is Attached, and/or,

[F] ☐ Waivers are Attached

[3] SUBMIT ACCURATE AND COMPLETE INFORMATION REQUIRED TO PROCESS THE TYPE OF APPLICATION INDICATED ABOVE.

[4] CERTIFICATION: I hereby certify that the information submitted with this application for administrative approval is **accurate** and **complete** to the best of my knowledge. I also understand that **no**

action will be taken on this application until the required information and notifications are submitted to the Division.

Note: Statement must be completed by an individual with managerial and/or supervisory capacity.

Chad Cole

Regulatory Specialist

11/2/2021

Print or Type Name
Date


Signature

Title

ccole@mewbourne.com
e-mail Address

District I
1625 N. French Drive, Hobbs, NM 88240
District II
811 S. First St., Artesia, NM 88210
District III
1000 Rio Brazos Road, Aztec, NM 87410
District IV
1220 S. St Francis Dr, Santa Fe, NM
87505

State of New Mexico
Energy, Minerals and Natural Resources Department

Form C-107-B
Revised August 1, 2011

OIL CONSERVATION DIVISION

1220 S. St Francis Drive
Santa Fe, New Mexico 87505

Submit the original
application to the Santa Fe
office with one copy to the
appropriate District Office.

APPLICATION FOR SURFACE COMMINGLING (DIVERSE OWNERSHIP)

OPERATOR NAME: Mewbourne Oil Company

OPERATOR ADDRESS: 4801 Business Park BLVD PO Box 5270 Hobbs NM 88240

APPLICATION TYPE:

☐ Pool Commingling ☒ Lease Commingling ☐ Pool and Lease Commingling ☐ Off-Lease Storage and Measurement (Only if not Surface Commingling)

LEASE TYPE: ☐ Fee ☒ State ☐ Federal

Is this an Amendment to existing Order? ☐ Yes ☒ No If "Yes", please include the appropriate Order No. _____
Have the Bureau of Land Management (BLM) and State Land office (SLO) been notified in writing of the proposed commingling
☒ Yes ☐ No

(A) POOL COMMINGLING

Please attach sheets with the following information

(1) Pool Names and Codes	Gravities / BTU of Non-Commingled Production	Calculated Gravities / BTU of Commingled Production		Calculated Value of Commingled Production	Volumes

- (2) Are any wells producing at top allowables? ☐ Yes ☐ No
(3) Has all interest owners been notified by certified mail of the proposed commingling? ☐ Yes ☐ No.
(4) Measurement type: ☐ Metering ☐ Other (Specify)
(5) Will commingling decrease the value of production? ☐ Yes ☐ No If "yes", describe why commingling should be approved

(B) LEASE COMMINGLING

Please attach sheets with the following information

- (1) Pool Name and Code.
(2) Is all production from same source of supply? ☒ Yes ☐ No
(3) Has all interest owners been notified by certified mail of the proposed commingling? ☒ Yes ☐ No
(4) Measurement type: ☒ Metering ☐ Other (Specify)

(C) POOL and LEASE COMMINGLING

Please attach sheets with the following information

- (1) Complete Sections A and E.

(D) OFF-LEASE STORAGE and MEASUREMENT

Please attach sheets with the following information

- (1) Is all production from same source of supply? ☐ Yes ☐ No
(2) Include proof of notice to all interest owners.

(E) ADDITIONAL INFORMATION (for all application types)

Please attach sheets with the following information

- (1) A schematic diagram of facility, including legal location.
(2) A plat with lease boundaries showing all well and facility locations. Include lease numbers if Federal or State lands are involved.
(3) Lease Names, Lease and Well Numbers, and API Numbers.

I hereby certify that the information above is true and complete to the best of my knowledge and belief.

SIGNATURE: Chad Cole TITLE: Regulatory Specialist DATE: 11/2/2021

TYPE OR PRINT NAME Chad Cole TELEPHONE NO.: 575-393-5905

E-MAIL ADDRESS: ccole@mewbourne.com

Well Name	Location	API #	Pool #	State Leases	MCFPD	Dry BTU @ 14.73 PSI
Parkchester 24/23 B2AD State Com 1H	225' FNL & 205' FEL, Sec 24, T19S, R28E	30-015-46061	[55510] Scanlon Draw; Bone Spring	160 Acres E050730005 40 Acres E051360002 120 Acres E051360004	~3000	~1250
Parkchester 24/23 B2HE State Com 1H	1860' FNL & 205' FEL, Sec 24, T19S, R28E	30-015-47311	[55510] Scanlon Draw; Bone Spring	160 Acres E050730005 120 Acres E051360002 40 Acres E051360004	~3000	~1250
Parkchester 24/23 B2IL State Com 1H	1200' FSL & 205' FEL, Sec 24, T19S, R28E	30-015-48345	[55510] Scanlon Draw; Bone Spring	160 Acres E050730005 120 Acres E051360002 40 Acres E051360004	~3000	~1250
Parkchester 24/23 B2PM State Com 1H	1170' FSL & 205' FEL, Sec 24, T19S, R28E	30-015-48346	[55510] Scanlon Draw; Bone Spring	160 Acres E050730005 120 Acres E051360002 40 Acres E051360004	~3000	~1250
Parkchester 24/23 B3AD State Com 2H	225' FNL & 205' FEL, Sec 24, T19S, R28E	30-015-46062	[55510] Scanlon Draw; Bone Spring	160 Acres E050730005 40 Acres E051360002 120 Acres E051360004	~3000	~1250
Parkchester 24/23 B3HE State Com 2H	1890' FNL & 205' FEL, Sec 24, T19S, R28E	30-015-47310	[55510] Scanlon Draw; Bone Spring	160 Acres E050730005 120 Acres E051360002 40 Acres E051360004	~3000	~1250

Well Name	Location	API #	Pool #	State Leases	MCFPD	Dry BTU @ 14.73 PSI
Rattlesnake 13/18 B2LK State Com 1H	2130' FSL & 205' FWL, Sec 13, T19S, R28E	30-015-45272	[55510] Scanlon Draw; Bone Spring	160 Acres E076680002 40 Acres L063670004 40 Acres LG39680004	~3000	~1250
Rattlesnake 13/18 B3LK State Com 1H	2100' FSL & 205' FWL, Sec 13, T19S, R28E	30-015-45273	[55510] Scanlon Draw; Bone Spring	160 Acres E076680002 40 Acres L063670004 40 Acres LG39680004	~3000	~1250
Rattlesnake 13/18 B2MN State Com 1H	2070' FSL & 205' FWL, Sec 13, T19S, R28E	30-015-46641	[55510] Scanlon Draw; Bone Spring	80 Acres OG07840003 80 Acres OG07840002 40 Acres L063670004 40 Acres LG39680004	~3000	~1250

MEWBOURNE OIL COMPANY

500 WEST TEXAS AVENUE, SUITE 1020
MIDLAND, TEXAS 79701-4279

TELEPHONE (432) 682-3715

November 11, 2021

Via Certified Mail

See Attached Address List

Re: Application for State Lease Commingle and Central Gas Meter

Parkchester 24/23 B2AD State Com #1H
API# 30-015-46061
225' FNL & 205' FEL
Section 24, T19S, R28E
Eddy County, New Mexico

Parkchester 24/23 B3AD State Com #2H
API# 30-015-46062
255' FNL & 205' FEL
Section 24, T19S, R28E
Eddy County, New Mexico

Parkchester 24/23 B2HE State Com #1H
API# 30-015-47311
1860' FNL & 205' FEL
Section 24, T19S, R28E
Eddy County, New Mexico

Parkchester 24/23 B3HE State Com #2H
API# 30-015-47310
1890' FNL & 205' FEL
Section 24, T19S, R28E
Eddy County, New Mexico

Parkchester 24/23 B2IL State Com #1H
API# 30-015-48345
1200' FSL & 205' FEL
Section 24, T19S, R28E
Eddy County, New Mexico

Parkchester 24/23 B2PM State Com #1H
API# 30-015-48346
1170' FSL & 205' FEL
Section 24, T19S, R28E
Eddy County, New Mexico

Rattlesnake 13/18 B2LK State Com #1H
API# 30-015-45272
2130' FSL & 205' FWL
Section 13, T19S, R28E
Eddy County, New Mexico

Rattlesnake 13/18 B3LK State Com #1H
API# 30-015-45273
2100' FSL & 205' FWL
Section 13, T19S, R28E
Eddy County, New Mexico

Rattlesnake 13/18 B2MN State Com #1H
API# 30-015-46641
2070' FSL & 205' FWL
Section 13, T19S, R28E
Eddy County, New Mexico

Ladies and Gentlemen:

Mewbourne Oil Company ("Mewbourne") has filed an application with the New Mexico Oil Conservation Division ("Division") seeking authorization for off-lease measurement of gas production from the captioned wells. A common EFS Gas Master Meter #68736 gas sales meter will be located in the SW/4SW/4 of Section 13, T19S, R28E, Eddy County, New Mexico.

The Rattlesnake 13/18 B2LK State Com #1H, Rattlesnake 13/18 B3LK State Com #2H, and Rattlesnake 13/18 B2MN State Com #1H are all on State Lease EO-7668 in Section 13, T19S, R28E, Eddy County, New Mexico. The gas production from these wells will stay on lease (EO-7668) to a common EFS Gas Master Meter #68736 gas sales meter that will be located in the SW/4SW/4 of Section 13, T19S, R28E, Eddy County, New Mexico. Mewbourne will allocate the gas production based on the allocation meter.

The Parkchester 24/23 B2AD State Com #1H, Parkchester 24/23 B3AD State Com #2H, Parkchester 24/23 B2HE State Com #1H, Parkchester 24/23 B3HE State Com #2H, Parkchester 24/23 B2AD State Com #1H, and the Parkchester 24/23 B2HE State Com #1H are all on State Lease E-5073 in Section 24, T19S, R28E, Eddy County, New Mexico. The gas production from these wells will flow off lease (EO-7668) to a common EFS Gas Master Meter #68736 gas sales meter that will be located in the SW/4SW/4 of Section 13, T19S, R28E, Eddy County, New Mexico. Mewbourne will allocate the gas production based on the allocation meter.

If you object to the either application, you must notify the Division in writing no later than 20 days from the date of this letter (the Division's address is 1220 South St. Francis Drive, Santa Fe, New Mexico 87505). Failure to object will preclude you from contesting this matter later.

Should you have any questions regarding the above, please email Chad Cole at ccole@mewbourne.com or call him at (575) 393-5905.

Sincerely,

MEWBOURNE OIL COMPANY



Josh Anderson, RPL
Landman

APPLICATION FOR LEASE COMMINGLING, (GAS)**Commingling procedure for Parkchester & Rattlesnake leases:**

Mewbourne Oil Company is requesting approval for lease commingling gas production from 9 wells located on State leases below to a common gas meter (EFS MM #68736):

Well Name	Location	API #	Pool #	State Leases	MCFPD	Dry BTU @ 14.73 PSI
Parkchester 24/23 B2AD State Com 1H	225' FNL & 205' FEL, Sec 24, T19S, R28E	30-015-46061	[55510] Scanlon Draw; Bone Spring	160 Acres E050730005 40 Acres E051360002 120 Acres E051360004	~3000	~1250
Parkchester 24/23 B2HE State Com 1H	1860' FNL & 205' FEL, Sec 24, T19S, R28E	30-015-47311	[55510] Scanlon Draw; Bone Spring	160 Acres E050730005 120 Acres E051360002 40 Acres E051360004	~3000	~1250
Parkchester 24/23 B2IL State Com 1H	1200' FSL & 205' FEL, Sec 24, T19S, R28E	30-015-48345	[55510] Scanlon Draw; Bone Spring	160 Acres E050730005 120 Acres E051360002 40 Acres E051360004	~3000	~1250
Parkchester 24/23 B2PM State Com 1H	1170' FSL & 205' FEL, Sec 24, T19S, R28E	30-015-48346	[55510] Scanlon Draw; Bone Spring	160 Acres E050730005 120 Acres E051360002 40 Acres E051360004	~3000	~1250
Parkchester 24/23 B3AD State Com 2H	255' FNL & 205' FEL, Sec 24, T19S, R28E	30-015-46062	[55510] Scanlon Draw; Bone Spring	160 Acres E050730005 40 Acres E051360002 120 Acres E051360004	~3000	~1250
Parkchester 24/23 B3HE State Com 2H	1890' FNL & 205' FEL, Sec 24, T19S, R28E	30-015-47310	[55510] Scanlon Draw; Bone Spring	160 Acres E050730005 120 Acres E051360002 40 Acres E051360004	~3000	~1250

Well Name	Location	API #	Pool #	State Leases	MCFPD	Dry BTU @ 14.73 PSI
Rattlesnake 13/18 B2LK State Com 1H	2130' FSL & 205' FWL, Sec 13, T19S, R28E	30-015-45272	[55510] Scanlon Draw; Bone Spring	160 Acres E076680002 40 Acres L063670004 40 Acres LG39680004	~3000	~1250
Rattlesnake 13/18 B3LK State Com 1H	2100' FSL & 205' FWL, Sec 13, T19S, R28E	30-015-45273	[55510] Scanlon Draw; Bone Spring	160 Acres E076680002 40 Acres L063670004 40 Acres LG39680004	~3000	~1250
Rattlesnake 13/18 B2MN State Com 1H	2070' FSL & 205' FWL, Sec 13, T19S, R28E	30-015-46641	[55510] Scanlon Draw; Bone Spring	80 Acres OG07840003 80 Acres OG07840002 40 Acres L063670004 40 Acres LG39680004	~3000	~1250

Gas Metering:

Gas volumes from each well producing to these batteries will be determined by using an allocation gas meter after the separator at the facility for each well. The gas production from the wells listed above will be measured, commingled, and then sold on lease using the 24 hr. well test method.

An existing Enterprise gas sales meter (MM #68736) is in the SWSW of Section 13, T19S, R28E, Eddy Co. This meter is calibrated on a regular basis per API, NMOCD and BLM specifications.

Process and Flow Descriptions:

The flow of production is shown in detail on the enclosed facility diagram and map which shows lease boundaries, wells, battery, & MM location. The commingling of production is in the interest of conservation and waste and will result in the most effective economic means of producing the reserves in place from the affected wells and will not result in reduced royalty or improper measurement of production.

Working, royalty, & overriding interest owners have been notified of the proposal via certified mail (see attached).

Signed: _____

Printed Name: Chad Cole

Title: Regulatory Specialist

Date: 11/2/2021

Economic Justification

Well Name	Oil Gravity @ 60°	Value/bbl	MCFPD	Dry BTU @ 14.73 PSI	Value/MCF
Parkchester 24/23 B2AD State Com 1H	48	\$82	~3000	~1250	\$2.50
Parkchester 24/23 B2HE State Com 1H	48	\$82	~3000	~1250	\$2.50
Parkchester 24/23 B2IL State Com 1H	48	\$82	~3000	~1250	\$2.50
Parkchester 24/23 B2PM State Com 1H	48	\$82	~3000	~1250	\$2.50
Parkchester 24/23 B3AD State Com 2H	48	\$82	~3000	~1250	\$2.50
Parkchester 24/23 B3HE State Com 2H	48	\$82	~3000	~1250	\$2.50
Rattlesnake 13/18 B2LK State Com 1H	48	\$82	~3000	~1250	\$2.50
Rattlesnake 13/18 B3LK State Com 1H	48	\$82	~3000	~1250	\$2.50
Rattlesnake 13/18 B2MN State Com 1H	48	\$82	~3000	~1250	\$2.50
CTB Combined	48	\$82	~27,000	1250	\$2.50

Process and Flow Descriptions:

The flow of production is shown in detail on the enclosed facility diagram and map which shows lease boundaries, wells, and battery location. The commingling of production is in the interest of conservation and waste and will result in the most effective economic means of producing the reserves in place from the affected wells and will not result in reduced royalty or improper measurement of production.

Working, royalty, & overriding interest owners have been notified of the proposal via certified mail (see attached).

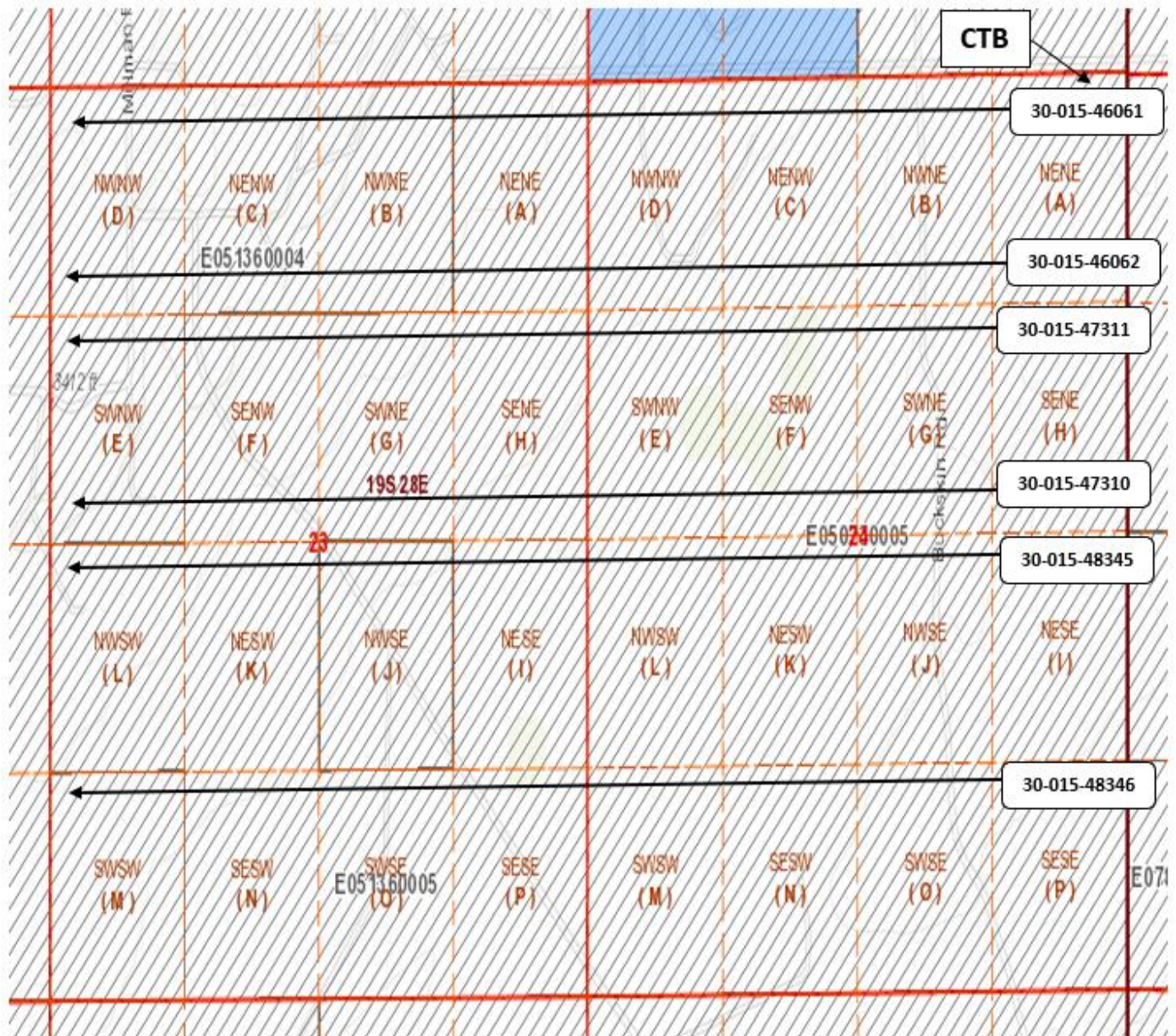
Signed: _____

Printed Name: Chad Cole

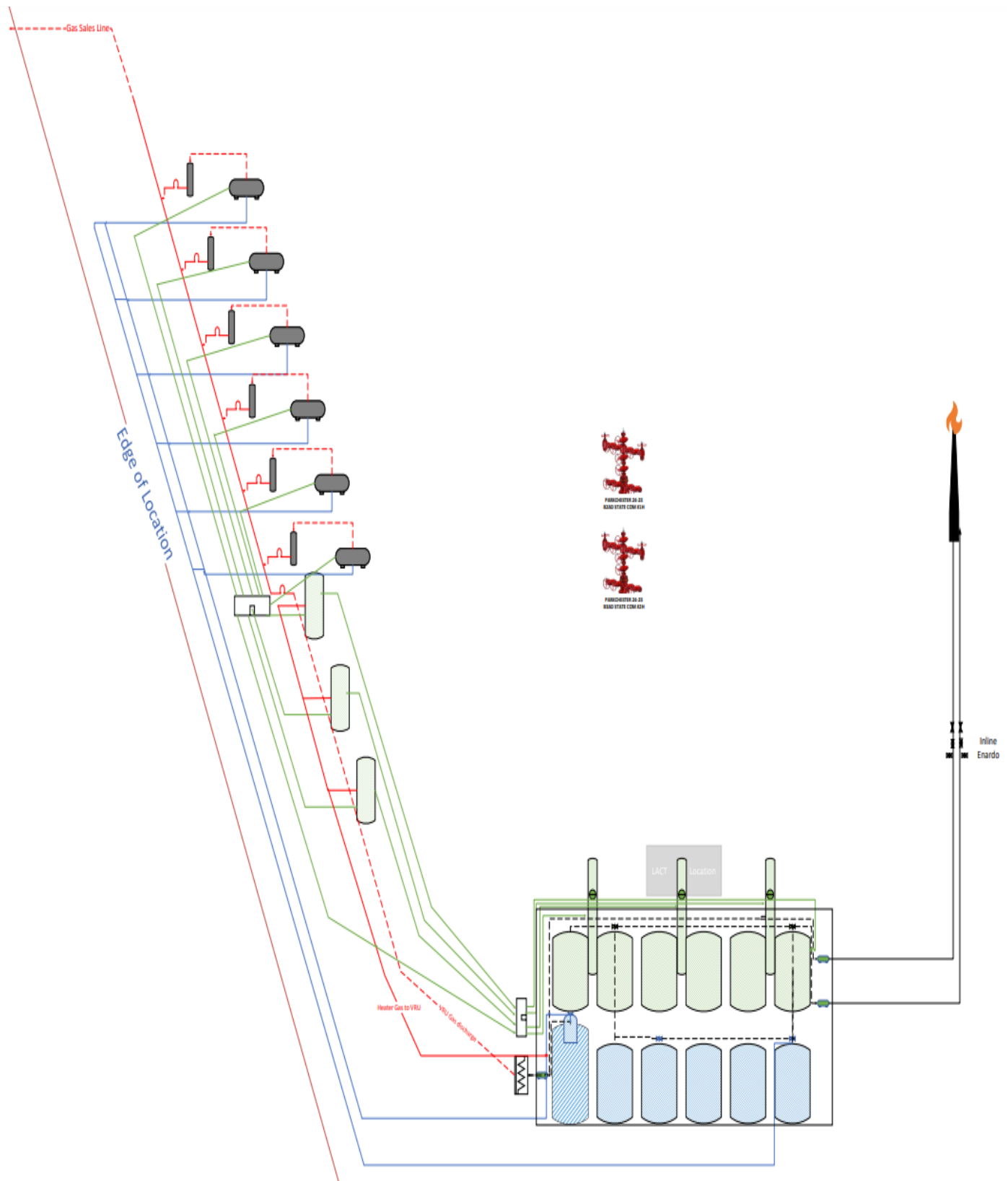
Title: Regulatory Specialist

Date: 11/2/2021

Parkchester Lease Boundary Map



Parkchester Facility Diagram



OWNER NAME	ADDRESS 1	CITY	STATE	ZIP	CERTIFIED NUMBER
BCRK	2004 WYCKHAM PLACE	NORMAN	OK	73072	9414 8368 9784 6570 330100
BRUSH CREEK INTERESTS LLC	9337B KAY FREEWAY - STE 207	HOUSTON	TX	77024	9414 8368 9784 6570 337147
EOG RESOURCES INC	5509 CHAMPIONS DR.	MIDLAND	TX	79706	9414 8368 9784 6570 342424
FASKEN LAND AND MINERALS LTD	6101 HOLIDAY HILL ROAD	MIDLAND	TX	79707	9414 8368 9784 6570 348013
GEORGE W STRAKE JR	712 MAIN ST., STE. 3300	HOUSTON	TX	77002	9414 8368 9784 6570 354915
MARATHON OIL PERMIAN LLC	5555 SAN FELIPE ST.	HOUSTON	TX	77056	9414 8368 9784 6570 361562
MCCOMBS ENERGY LTD	750 E. MULBERRY AVE., STE. 403	SAN ANTONIO	TX	78212	9414 8368 9784 6570 367397
MCCOMBS EXPLORATION LLC	750 E. MULBERRY AVE., STE. 403	SAN ANTONIO	TX	78212	9414 8368 9784 6570 373176
NEW MEXICO STATE LAND OFFICE	310 OLD SANTA FE TRAIL	SANTA FE	NM	87501	9414 8368 9784 6570 378744
NORTHERN OIL & GAS INC	601 CARLSON PARKWAY, STE. 990	MINNETONKA	MN	55305	9414 8368 9784 6570 385445
OXY USA INC	5 GREENWAY PLAZA, STE. 110	HOUSTON	TX	77046	9414 8368 9784 6570 406201
OXY USA WTP LP	5 GREENWAY PLAZA, STE. 110	HOUSTON	TX	77046	9414 8368 9784 6570 413339
OXY Y-1 COMPANY	5 GREENWAY PLAZA, STE. 110	HOUSTON	TX	77046	9414 8368 9784 6570 419850
RED ROCK ROYALTY LTD PTSP	P.O. BOX 22066	DENVER	CO	80222	9414 8368 9784 6570 425752
RSC RESOURCES LP	P.O. BOX 8329	HORSESHOE BAY	TX	78657	9414 8368 9784 6570 429705
SMAC OIL LIMITED PARTNERSHIP	P.O. BOX 4190	SCOTTSDALE	AZ	85260	9414 8368 9784 6570 483943
WELLFLEET INVESTMENT FUND I LP	5000 BRAEBURN DR.	BELLAIRE	TX	77401	9414 8368 9784 6570 506420
YATES BROTHERS	P.O. BOX 1394	ARTESIA	NM	88211	9414 8368 9784 6570 510267
ZPZ DELAWARE I LLC	2000 POST OAK BLVD., STE. 100	HOUSTON	TX	77056	9414 8368 9784 6570 513855

OWNER NAME	ADDRESS 1	CITY	STATE	ZIP	CERTIFIED NUMBER
ALPHA ENERGY PARTNERS LLC	P.O. BOX 10701	MIDLAND	TX	79702	9414 8368 9784 6570 532528
BETTY R YOUNG	P.O. BOX 811	ROSWELL	NM	88202	9414 8368 9784 6570 535635
CAROLYN R BEALL	P.O. BOX 3098	MIDLAND	TX	79702	9414 8368 9784 6570 539350
DEVON ENERGY PRODUCTION CO LP	333 W. SHERIDAN AVE.	OKLAHOMA CITY	OK	73102	9414 8368 9784 6570 542268
DICK A BLENDE	208 W. STEVENS ST.	CARLSBAD	NM	88220	9414 8368 9784 6570 545825
HIGHLAND TEXAS ENERGY COMPANY	11886 GREENVILLE AVE., STE. 106	DALLAS	TX	75243	9414 8368 9784 6570 550249
KERR MCGEE OIL & GAS	P.O. BOX 1330	HOUSTON	TX	77251	9414 8368 9784 6570 553578
MAGNUM HUNTER PRODUCTION INC	202 S. CHEYENNE AVE., STE. 1000	TULSA	OK	74103	9414 8368 9784 6570 558818
MRC PERMIAN COMPANY	5400 LBJ FREEWAY, STE. 1500	DALLAS	TX	75240	9414 8368 9784 6570 561924
NEW MEXICO STATE LAND OFFICE	310 OLD SANTA FE TRAIL	SANTA FE	NM	87501	9414 8368 9784 6570 565021
NORMAN L STEVENS JR	P.O. BOX 3087	ROSWELL	NM	88202	9414 8368 9784 6570 614231
OXY USA INC	5 GREENWAY PLAZA, STE. 110	HOUSTON	TX	77046	9414 8368 9784 6572 268357
OXY USA WTP LP	5 GREENWAY PLAZA, STE. 110	HOUSTON	TX	77046	9414 8368 9784 6572 272330
PRINCE PETROLEUM COMPANY LTD	306 WEST 7TH ST., STE. 701	FORT WORTH	TX	76102	9414 8368 9784 6572 276529
STEPHENS & JOHNSON OPERATING	P.O. BOX 2249	WICHITA FALLS	TX	76307	9414 8368 9784 6572 285675
TRUST Q UWO-PEGGY A YATES	P.O. BOX 100	ARTESIA	NM	88211	9414 8368 9784 6572 292673
VLADIN LLC	P.O. BOX 100	ARTESIA	NM	88211	9414 8368 9784 6572 299870

OWNER NAME	ADDRESS 1
BCRK	2004 WYCKHAM PLACE
BRUSH CREEK INTERESTS LLC	9337B KAY FREEWAY - STE 207
EOG RESOURCES INC	5509 CHAMPIONS DR.
FASKEN LAND AND MINERALS LTD	6101 HOLIDAY HILL ROAD
GEORGE W STRAKE JR	712 MAIN ST., STE. 3300
MARATHON OIL PERMIAN LLC	5555 SAN FELIPE ST.
MCCOMBS ENERGY LTD	750 E. MULBERRY AVE., STE. 403
MCCOMBS EXPLORATION LLC	750 E. MULBERRY AVE., STE. 403
NEW MEXICO STATE LAND OFFICE	310 OLD SANTA FE TRAIL
NORTHERN OIL & GAS INC	601 CARLSON PARKWAY, STE. 990
OXY USA INC	5 GREENWAY PLAZA, STE. 110
OXY USA WTP LP	5 GREENWAY PLAZA, STE. 110
OXY Y-1 COMPANY	5 GREENWAY PLAZA, STE. 110
RED ROCK ROYALTY LTD PTSP	P.O. BOX 22066
RSC RESOURCES LP	P.O. BOX 8329
SMAC OIL LIMITED PARTNERSHIP	P.O. BOX 4190
WELLFLEET INVESTMENT FUND I LP	5000 BRAEBURN DR.
YATES BROTHERS	P.O. BOX 1394
ZPZ DELAWARE I LLC	2000 POST OAK BLVD., STE. 100

CITY	STATE	ZIP	CERTIFIED NUMBER
NORMAN	OK	73072	330100
HOUSTON	TX	77024	337147
MIDLAND	TX	79706	342424
MIDLAND	TX	79707	348013
HOUSTON	TX	77002	354915
HOUSTON	TX	77056	361562
SAN ANTONIO	TX	78212	367397
SAN ANTONIO	TX	78212	373176
SANTA FE	NM	87501	378744
MINNETONKA	MN	55305	385445
HOUSTON	TX	77046	406201
HOUSTON	TX	77046	413339
HOUSTON	TX	77046	419850
DENVER	CO	80222	425752
HORSESHOE BAY	TX	78657	429705
SCOTTSDALE	AZ	85260	483943
BELLAIRE	TX	77401	506420
ARTESIA	NM	88211	510267
HOUSTON	TX	77056	513855

District I
1625 N. French Dr., Hobbs, NM 88240
Phone: (575) 393-6161 Fax: (575) 393-0720
District II
811 S. First St., Artesia, NM 88210
Phone: (575) 748-1283 Fax: (575) 748-9720
District III
1000 Rio Brazos Road, Aztec, NM 87410
Phone: (505) 334-6178 Fax: (505) 334-6170
District IV
1220 S. St. Francis Dr., Santa Fe, NM 87505
Phone: (505) 476-3460 Fax: (505) 476-3462

State of New Mexico
Energy, Minerals & Natural Resources Department
OIL CONSERVATION DIVISION
1220 South St. Francis Dr.
Santa Fe, NM 87505

Form C-102
Revised August 1, 2011
Submit one copy to appropriate
District Office

☐ AMENDED REPORT

WELL LOCATION AND ACREAGE DEDICATION PLAT

1 API Number		2 Pool Code		3 Pool Name	
4 Property Code		5 Property Name PARKCHESTER 24/23 B2AD STATE COM			6 Well Number 1H
7 GRID NO.		8 Operator Name MEWBOURNE OIL COMPANY			9 Elevation 3378'
10 Surface Location					
UL or lot no. A	Section 24	Township 19S	Range 28E	Lot Idn 225	North/South line NORTH
Feet From the		Feet From the		East/West line	
205		205		EAST	
County		EDDY			
11 Bottom Hole Location If Different From Surface					
UL or lot no. D	Section 23	Township 19S	Range 28E	Lot Idn 400	North/South line NORTH
Feet from the		Feet from the		East/West line	
100		100		WEST	
County		EDDY			
12 Dedicated Acres		13 Joint or Infill		14 Consolidation Code	
				15 Order No.	

No allowable will be assigned to this completion until all interest have been consolidated or a non-standard unit has been approved by the division.

<p>16</p> <p>GEODEIC DATA NAD 83 GRID - NM EAST SURFACE LOCATION N: 601422.2 - E: 606189.6 LAT: 32.6531801° N LONG: 104.1226178° W BOTTOM HOLE N: 601138.7 - E: 596081.8 LAT: 32.6524515° N LONG: 104.1554609° W</p>		<p>CORNER DATA NAD 83 GRID - NM EAST A: FOUND BRASS CAP "1941" N: 596258.7 - E: 595984.2 B: FOUND BRASS CAP "1941" N: 598897.7 - E: 595983.6 C: FOUND BRASS CAP "1941" N: 601537.8 - E: 595981.6 D: FOUND BRASS CAP "1941" N: 601556.9 - E: 598579.0 E: FOUND BRASS CAP "1941" N: 601577.6 - E: 601175.4 F: FOUND BRASS CAP "1941" N: 601613.1 - E: 603784.4</p>		<p>G: FOUND BRASS CAP "1941" N: 601650.1 - E: 606394.2 H: FOUND BRASS CAP "1941" N: 598997.4 - E: 606397.9 I: FOUND BRASS CAP "1941" N: 596349.6 - E: 606403.0 J: FOUND BRASS CAP "1941" N: 596322.3 - E: 603791.7 K: FOUND BRASS CAP "1941" N: 596295.7 - E: 601180.7 L: FOUND BRASS CAP "1941" N: 598937.0 - E: 601179.9</p>		<p>17 OPERATOR CERTIFICATION I hereby certify that the information contained herein is true and complete to the best of my knowledge and belief, and that this organization either owns a working interest or unleased mineral interest in the land including the proposed bottom hole location or has a right to drill this well at this location pursuant to a contract with an owner of such a mineral or working interest, or to a voluntary pooling agreement or a compulsory pooling order heretofore entered by the division.</p> <p>Signature _____ Date _____</p> <p>Printed Name _____</p> <p>E-mail Address _____</p>	
<p>18 SURVEYOR CERTIFICATION I hereby certify that the well location shown on this plat was plotted from field notes of actual surveys made by me or under my supervision, and that the same is true and correct to the best of my belief.</p> <p>11-26-2018 Date of Survey</p> <p>Signature and Seal of Professional Surveyor _____</p> <p>19680 Certificate Number</p>		<p>19680 Certificate Number</p> <p>Job No: LS18111281</p>					

District I
1625 N. French Dr., Hobbs, NM 88240
Phone: (575) 393-6161 Fax: (575) 393-0720
District II
811 S. First St., Artesia, NM 88210
Phone: (575) 748-1283 Fax: (575) 748-9720
District III
1000 Rio Brazos Road, Aztec, NM 87410
Phone: (505) 334-6178 Fax: (505) 334-6170
District IV
1220 S. St. Francis Dr., Santa Fe, NM 87505
Phone: (505) 476-3460 Fax: (505) 476-3462

State of New Mexico
Energy, Minerals & Natural Resources Department
OIL CONSERVATION DIVISION
1220 South St. Francis Dr.
Santa Fe, NM 87505

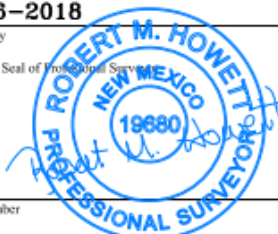
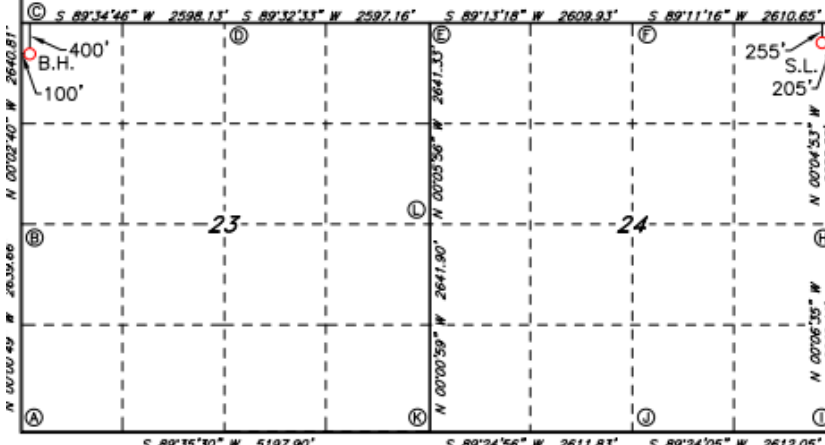
Form C-102
Revised August 1, 2011
Submit one copy to appropriate
District Office

☐ AMENDED REPORT

WELL LOCATION AND ACREAGE DEDICATION PLAT

¹ API Number		² Pool Code		³ Pool Name					
⁴ Property Code		⁵ Property Name PARKCHESTER 24/23 B3AD STATE COM						⁶ Well Number 2H	
⁷ OGRID NO.		⁸ Operator Name MEWBOURNE OIL COMPANY						⁹ Elevation 3379'	
¹⁰ Surface Location									
UL or lot no. A	Section 24	Township 19S	Range 28E	Lot Idn	Feet from the 255	North/South line NORTH	Feet from the 205	East/West line EAST	County EDDY
¹¹ Bottom Hole Location If Different From Surface									
UL or lot no. D	Section 23	Township 19S	Range 28E	Lot Idn	Feet from the 400	North/South line NORTH	Feet from the 100	East/West line WEST	County EDDY
¹² Dedicated Acres		¹³ Joint or Infill		¹⁴ Consolidation Code		¹⁵ Order No.			

No allowable will be assigned to this completion until all interest have been consolidated or a non-standard unit has been approved by the division.

¹⁶ GEODEIC DATA NAD 83 GRID - NM EAST SURFACE LOCATION N: 601392.3 - E: 606189.6 LAT: 32.6530977° N LONG: 104.1226179° W BOTTOM HOLE N: 601138.7 - E: 596081.8 LAT: 32.6524515° N LONG: 104.1554609° W		CORNER DATA NAD 83 GRID - NM EAST A: FOUND BRASS CAP "1941" N: 596258.7 - E: 595984.2 B: FOUND BRASS CAP "1941" N: 598897.7 - E: 595983.6 C: FOUND BRASS CAP "1941" N: 601537.8 - E: 595981.6 D: FOUND BRASS CAP "1941" N: 601556.9 - E: 598579.0 E: FOUND BRASS CAP "1941" N: 601577.6 - E: 601175.4 F: FOUND BRASS CAP "1941" N: 601613.1 - E: 603784.4		G: FOUND BRASS CAP "1941" N: 601650.1 - E: 606394.2 H: FOUND BRASS CAP "1941" N: 598997.4 - E: 606397.9 I: FOUND BRASS CAP "1941" N: 596349.6 - E: 606403.0 J: FOUND BRASS CAP "1941" N: 596322.3 - E: 603791.7 K: FOUND BRASS CAP "1941" N: 596295.7 - E: 601180.7 L: FOUND BRASS CAP "1941" N: 598937.0 - E: 601179.9		¹⁷ OPERATOR CERTIFICATION I hereby certify that the information contained herein is true and complete to the best of my knowledge and belief, and that this organization either owns a working interest or unless mineral interest in the land including the proposed bottom hole location or has a right to drill this well at this location pursuant to a contract with an owner of such a mineral or working interest, or to a voluntary pooling agreement or a compulsory pooling order heretofore entered by the division. Signature _____ Date _____ Printed Name _____ E-mail Address _____	
¹⁸ SURVEYOR CERTIFICATION I hereby certify that the well location shown on this plat was plotted from field notes of actual surveys made by me or under my supervision, and that the same is true and correct to the best of my belief. 11-26-2018 Date of Survey Signature and Seal of Professional Surveyor  19680 Certificate Number							
Job No: LS18111282							

District I
1625 N. French Dr., Hobbs, NM 88240
Phone: (575) 393-6161 Fax: (575) 393-0720
District II
811 S. First St., Artesia, NM 88210
Phone: (575) 748-1283 Fax: (575) 748-9720
District III
1000 Rio Brazos Road, Aztec, NM 87410
Phone: (505) 334-6178 Fax: (505) 334-6170
District IV
1220 S. St. Francis Dr., Santa Fe, NM 87505
Phone: (505) 476-3460 Fax: (505) 476-3462

State of New Mexico
Energy, Minerals & Natural Resources Department
OIL CONSERVATION DIVISION
1220 South St. Francis Dr.
Santa Fe, NM 87505

Form C-102
Revised August 1, 2011
Submit one copy to appropriate
District Office

☐ AMENDED REPORT

WELL LOCATION AND ACREAGE DEDICATION PLAT

1 API Number		2 Pool Code		3 Pool Name					
4 Property Code		5 Property Name PARKCHESTER 24/23 B2HE STATE COM						6 Well Number 1H	
7 GRID NO.		8 Operator Name MEWBOURNE OIL COMPANY						9 Elevation 3380'	
10 Surface Location									
UL or lot no. H	Section 24	Township 19S	Range 28E	Lot Idn	Feet from the 1860	North/South line NORTH	Feet From the 205	East/West line EAST	County EDDY
11 Bottom Hole Location If Different From Surface									
UL or lot no. E	Section 23	Township 19S	Range 28E	Lot Idn	Feet from the 1880	North/South line NORTH	Feet from the 100	East/West line WEST	County EDDY
12 Dedicated Acres		13 Joint or Infill		14 Consolidation Code		15 Order No.			

No allowable will be assigned to this completion until all interest have been consolidated or a non-standard unit has been approved by the division.

<p>16</p> <p>CORNER DATA NAD 83 GRID - NM EAST</p> <p>GEODETIC DATA NAD 83 GRID - NM EAST</p> <p>SURFACE LOCATION N: 599787.6 - E: 606191.9 LAT: 32.6486869° N LONG: 104.1226208° W</p> <p>BOTTOM HOLE N: 599659.0 - E: 598083.0 LAT: 32.6483844° N LONG: 104.1554653° W</p> <p>A: FOUND BRASS CAP "1941" N: 596258.7 - E: 595984.2 B: FOUND BRASS CAP "1941" N: 598897.7 - E: 595983.6 C: FOUND BRASS CAP "1941" N: 601537.8 - E: 595981.6 D: FOUND BRASS CAP "1941" N: 601556.9 - E: 598579.0 E: FOUND BRASS CAP "1941" N: 601577.6 - E: 601175.4 F: FOUND BRASS CAP "1941" N: 601613.1 - E: 603784.4 G: FOUND BRASS CAP "1941" N: 601650.1 - E: 606394.2 H: FOUND BRASS CAP "1941" N: 598997.4 - E: 606397.9 I: FOUND BRASS CAP "1941" N: 596349.6 - E: 606403.0 J: FOUND BRASS CAP "1941" N: 596322.3 - E: 603791.7 K: FOUND BRASS CAP "1941" N: 596295.7 - E: 601180.7 L: FOUND BRASS CAP "1941" N: 598937.0 - E: 601179.9</p>		<p>17 OPERATOR CERTIFICATION</p> <p>I hereby certify that the information contained herein is true and complete to the best of my knowledge and belief, and that this organization either owns a working interest or an undivided mineral interest in the land including the proposed bottom hole location or has a right to drill this well at this location pursuant to a contract with an owner of such a mineral or working interest, or to a voluntary pooling agreement or a compulsory pooling order heretofore entered by the division.</p> <p>Signature _____ Date _____</p> <p>Printed Name _____</p> <p>E-mail Address _____</p>
<p>18 SURVEYOR CERTIFICATION</p> <p>I hereby certify that the well location shown on this plat was plotted from field notes of actual surveys made by me or under my supervision, and that the same is true and correct to the best of my belief.</p> <p>12-11-2019 Date of Survey</p> <p>Signature and Seal of Professional Surveyor _____</p> <p>19680 Certificate Number</p> <p>RRC-Job No: LS19121141</p>		

District I
1625 N. French Dr., Hobbs, NM 88240
Phone: (575) 393-6161 Fax: (575) 393-0720
District II
811 S. First St., Artesia, NM 88210
Phone: (575) 748-1283 Fax: (575) 748-9720
District III
1000 Rio Brazos Road, Aztec, NM 87410
Phone: (505) 334-6178 Fax: (505) 334-6170
District IV
1220 S. St. Francis Dr., Santa Fe, NM 87505
Phone: (505) 476-3460 Fax: (505) 476-3462

State of New Mexico
Energy, Minerals & Natural Resources Department
OIL CONSERVATION DIVISION
1220 South St. Francis Dr.
Santa Fe, NM 87505

Form C-102
Revised August 1, 2011
Submit one copy to appropriate
District Office

☐ AMENDED REPORT

WELL LOCATION AND ACREAGE DEDICATION PLAT

¹ API Number	² Pool Code	³ Pool Name
⁴ Property Code	⁵ Property Name PARKCHESTER 24/23 B2IL STATE COM	
⁷ OGRID NO.	⁸ Operator Name MEWBOURNE OIL COMPANY	⁶ Well Number 1H
		⁹ Elevation 3362'

¹⁰ Surface Location

UL or lot no.	Section	Township	Range	Lot Idn	Feet from the	North/South line	Feet from the	East/West line	County
P	24	19S	28E		1200	SOUTH	205	EAST	EDDY

¹¹ Bottom Hole Location If Different From Surface

UL or lot no.	Section	Township	Range	Lot Idn	Feet from the	North/South line	Feet from the	East/West line	County
L	23	19S	28E		1890	SOUTH	100	WEST	EDDY

¹² Dedicated Acres	¹³ Joint or Infill	¹⁴ Consolidation Code	¹⁵ Order No.

No allowable will be assigned to this completion until all interest have been consolidated or a non-standard unit has been approved by the division.

<p>¹⁶ GEOGETIC DATA NAD 83 GRID - NM EAST SURFACE LOCATION N 59°54'2" - E 606195.8 LAT: 32.6425287° N LONG: 104.1226226° W BOTTOM HOLE N 598148.9 - E 596083.8 LAT: 32.6442336° N LONG: 104.1554710° W</p>	<p>CORNER DATA NAD 83 GRID - NM EAST A: FOUND BRASS CAP "1941" N 596258.7 - E 595984.2 B: FOUND BRASS CAP "1941" N 596897.7 - E 595983.6 C: FOUND BRASS CAP "1941" N 601537.8 - E 595981.6 D: FOUND BRASS CAP "1941" N 601556.9 - E 598579.0 E: FOUND BRASS CAP "1941" N 601577.6 - E 601175.4 F: FOUND BRASS CAP "1941" N 601613.1 - E 603784.4 G: FOUND BRASS CAP "1941" N 601650.1 - E 606394.2</p>	<p>H: FOUND BRASS CAP "1941" N 598997.4 - E 606397.9 I: FOUND BRASS CAP "1941" N 596349.6 - E 606403.0 J: FOUND BRASS CAP "1941" N 596322.3 - E 603791.7 K: FOUND BRASS CAP "1941" N 596295.7 - E 601180.7 L: FOUND BRASS CAP "1941" N 598937.0 - E 601179.9</p>	<p>¹⁷ OPERATOR CERTIFICATION I hereby certify that the information contained herein is true and complete to the best of my knowledge and belief, and that this organization either owns a working interest or unleased mineral interest in the land including the proposed bottom hole location or has a right to drill this well at this location pursuant to a contract with an owner of such a mineral or working interest, or to a voluntary pooling agreement or a compulsory pooling order heretofore entered by the division.</p> <p>Signature _____ Date _____ Printed Name _____ E-mail Address _____</p>
<p>¹⁸ SURVEYOR CERTIFICATION I hereby certify that the well location shown on this plat was plotted from field notes of actual surveys made by me or under my supervision, and that the same is true and correct to the best of my belief.</p> <p>4-25-18 Date of Survey Signature and Seal of Professional Surveyor 19680 Certificate Number REV: BH & SL MOVE-4/1/21 Job No.: LS1804523R</p>			

District I
1625 N. French Dr., Hobbs, NM 88240
Phone: (575) 393-6161 Fax: (575) 393-0720
District II
811 S. First St., Artesia, NM 88210
Phone: (575) 748-1283 Fax: (575) 748-9720
District III
1000 Rio Brazos Road, Aztec, NM 87410
Phone: (505) 334-6178 Fax: (505) 334-6170
District IV
1220 S. St. Francis Dr., Santa Fe, NM 87505
Phone: (505) 476-3460 Fax: (505) 476-3462

State of New Mexico
Energy, Minerals & Natural Resources Department
OIL CONSERVATION DIVISION
1220 South St. Francis Dr.
Santa Fe, NM 87505

Form C-102
Revised August 1, 2011
Submit one copy to appropriate
District Office

☐ AMENDED REPORT

WELL LOCATION AND ACREAGE DEDICATION PLAT

1 API Number		2 Pool Code		3 Pool Name					
4 Property Code		5 Property Name PARKCHESTER 24/23 B2PM STATE COM						6 Well Number 1H	
7 GRID NO.		8 Operator Name MEWBOURNE OIL COMPANY						9 Elevation 3361'	
10 Surface Location									
UL or lot no. P	Section 24	Township 19S	Range 28E	Lot Idn	Feet from the 1170	North/South line SOUTH	Feet from the 205	East/West line EAST	County EDDY
11 Bottom Hole Location If Different From Surface									
UL or lot no. M	Section 23	Township 19S	Range 28E	Lot Idn	Feet from the 500	North/South line SOUTH	Feet from the 100	East/West line WEST	County EDDY
12 Dedicated Acres		13 Joint or Infill		14 Consolidation Code		15 Order No.			

No allowable will be assigned to this completion until all interest have been consolidated or a non-standard unit has been approved by the division.

16 GEOGETIC DATA NAD 83 GRID - NM EAST SURFACE LOCATION N 597517.2 - E 606195.8 LAT: 32.6424463° N LONG: 104.1226227° W BOTTOM HOLE N 596759.3 - E 596084.1 LAT: 32.6404138° N LONG: 104.1554774° W		CORNER DATA NAD 83 GRID - NM EAST A: FOUND BRASS CAP "1941" N 596258.7 - E 595984.2 B: FOUND BRASS CAP "1941" N 598897.7 - E 595983.6 C: FOUND BRASS CAP "1941" N 601537.8 - E 595981.6 D: FOUND BRASS CAP "1941" N 601556.9 - E 598579.0 E: FOUND BRASS CAP "1941" N 601577.6 - E 601175.4 F: FOUND BRASS CAP "1941" N 601613.1 - E 603784.4 G: FOUND BRASS CAP "1941" N 601650.1 - E 606394.2		H: FOUND BRASS CAP "1941" N 598997.4 - E 606397.9 I: FOUND BRASS CAP "1941" N 596349.6 - E 606403.0 J: FOUND BRASS CAP "1941" N 596322.3 - E 603791.7 K: FOUND BRASS CAP "1941" N 596295.7 - E 601180.7 L: FOUND BRASS CAP "1941" N 598937.0 - E 601179.9		17 OPERATOR CERTIFICATION I hereby certify that the information contained herein is true and complete to the best of my knowledge and belief, and that this organization either owns a working interest or unleased mineral interest in the land including the proposed bottom hole location or has a right to drill this well at this location pursuant to a contract with an owner of such a mineral or working interest, or to a voluntary pooling agreement or a compulsory pooling order heretofore entered by the division. Signature _____ Date _____ Printed Name _____ E-mail Address _____	
18 SURVEYOR CERTIFICATION I hereby certify that the well location shown on this plat was plotted from field notes of actual surveys made by me or under my supervision, and that the same is true and correct to the best of my belief. 4-25-18 Date of Survey Signature and Seal of Professional Surveyor _____ 19680 Certificate Number REV: BH & SL MOVE-4/1/21 Job No.: LS1804524R							

District I
1625 N. French Dr., Hobbs, NM 88240
Phone: (575) 393-6161 Fax: (575) 393-0720
District II
811 S. First St., Artesia, NM 88210
Phone: (575) 748-1283 Fax: (575) 748-9720
District III
1000 Rio Brazos Road, Aztec, NM 87410
Phone: (505) 334-6178 Fax: (505) 334-6170
District IV
1220 S. St. Francis Dr., Santa Fe, NM 87505
Phone: (505) 476-3460 Fax: (505) 476-3462

State of New Mexico
Energy, Minerals & Natural Resources Department
OIL CONSERVATION DIVISION
1220 South St. Francis Dr.
Santa Fe, NM 87505

Form C-102
Revised August 1, 2011
Submit one copy to appropriate
District Office

☐ AMENDED REPORT

WELL LOCATION AND ACREAGE DEDICATION PLAT

¹ API Number	² Pool Code	³ Pool Name
⁴ Property Code	⁵ Property Name PARKCHESTER 24/23 B3HE STATE COM	⁶ Well Number 2H
⁷ OGRID NO.	⁸ Operator Name MEWBOURNE OIL COMPANY	⁹ Elevation 3379'

¹⁰ Surface Location

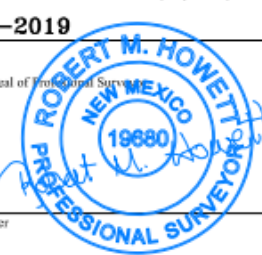
UL or lot no.	Section	Township	Range	Lot Idn	Feet from the	North/South line	Feet from the	East/West line	County
H	24	19S	28E		1890	NORTH	205	EAST	EDDY

¹¹ Bottom Hole Location If Different From Surface

UL or lot no.	Section	Township	Range	Lot Idn	Feet from the	North/South line	Feet from the	East/West line	County
E	23	19S	28E		1880	NORTH	100	WEST	EDDY

¹² Dedicated Acres	¹³ Joint or Infill	¹⁴ Consolidation Code	¹⁵ Order No.

No allowable will be assigned to this completion until all interest have been consolidated or a non-standard unit has been approved by the division.

<p>¹⁶</p> <p>CORNER DATA NAD 83 GRID - NM EAST</p> <p>GEODETIC DATA NAD 83 GRID - NM EAST</p> <p>SURFACE LOCATION N: 599757.5 - E: 606191.8 LAT: 32.6486043° N LONG: 104.1226211° W</p> <p>BOTTOM HOLE N: 599659.0 - E: 596083.0 LAT: 32.6483844° N LONG: 104.1554653° W</p> <p>A: FOUND BRASS CAP "1941" N: 596258.7 - E: 595984.2 B: FOUND BRASS CAP "1941" N: 598897.7 - E: 595983.6 C: FOUND BRASS CAP "1941" N: 601537.8 - E: 595981.6 D: FOUND BRASS CAP "1941" N: 601556.9 - E: 598579.0 E: FOUND BRASS CAP "1941" N: 601577.6 - E: 601175.4 F: FOUND BRASS CAP "1941" N: 601613.1 - E: 603784.4 G: FOUND BRASS CAP "1941" N: 601650.1 - E: 606394.2 H: FOUND BRASS CAP "1941" N: 598997.4 - E: 606397.9 I: FOUND BRASS CAP "1941" N: 596349.6 - E: 606403.0 J: FOUND BRASS CAP "1941" N: 596322.3 - E: 603791.7 K: FOUND BRASS CAP "1941" N: 596295.7 - E: 601180.7 L: FOUND BRASS CAP "1941" N: 598937.0 - E: 601179.9</p>		<p>¹⁷ OPERATOR CERTIFICATION I hereby certify that the information contained herein is true and complete to the best of my knowledge and belief, and that this organization either owns a working interest or unleased mineral interest in the land including the proposed bottom hole location or has a right to drill this well at this location pursuant to a contract with an owner of such a mineral or working interest, or to a voluntary pooling agreement or a compulsory pooling order heretofore entered by the division.</p> <p>Signature _____ Date _____</p> <p>Printed Name _____</p> <p>E-mail Address _____</p>
<p>¹⁸ SURVEYOR CERTIFICATION I hereby certify that the well location shown on this plat was plotted from field notes of actual surveys made by me or under my supervision, and that the same is true and correct to the best of my belief.</p> <p>12-11-2019 Date of Survey</p> <p>Signature and Seal of Professional Surveyor _____</p> <p>19680 Certificate Number</p>		

19680
Certificate Number

RRC-Job No: LS19121140

District I
1625 N. French Dr., Hobbs, NM 88240
Phone: (575) 393-6161 Fax: (575) 393-0720
District II
811 S. First St., Artesia, NM 88210
Phone: (575) 748-1283 Fax: (575) 748-9720
District III
1000 Rio Brazos Road, Aztec, NM 87410
Phone: (505) 334-6178 Fax: (505) 334-6170
District IV
1220 S. St. Francis Dr., Santa Fe, NM 87505
Phone: (505) 476-3460 Fax: (505) 476-3462

State of New Mexico
Energy, Minerals & Natural Resources Department
OIL CONSERVATION DIVISION
1220 South St. Francis Dr.
Santa Fe, NM 87505

Form C-102
Revised August 1, 2011
Submit one copy to appropriate
District Office

☐ AMENDED REPORT

WELL LOCATION AND ACREAGE DEDICATION PLAT

1 API Number		2 Pool Code		3 Pool Name	
4 Property Code		5 Property Name RATTLESNAKE 13/18 B2LK STATE COM			
6 Well Number 1H		7 Elevation 3387'			
8 Operator Name MEWBOURNE OIL COMPANY		9 Elevation 3387'			
10 Surface Location					
UL or lot no. L	Section 13	Township 19S	Range 28E	Lot Idn 2130	Feet From the 205
North/South line SOUTH		East/West line WEST		County EDDY	
11 Bottom Hole Location If Different From Surface					
UL or lot no. K	Section 18	Township 19S	Range 29E	Lot Idn 2100	Feet From the 2295
North/South line SOUTH		East/West line WEST		County EDDY	
12 Dedicated Acres	13 Joint or Infill	14 Consolidation Code	15 Order No.		

No allowable will be assigned to this completion until all interest have been consolidated or a non-standard unit has been approved by the division.

<p>16</p> <p>GEODETIC DATA NAD 83 GRID - NM EAST SURFACE LOCATION N 603709.9 - E 601385.2 LAT: 32.6594934° N LONG: 104.1382144° W BOTTOM HOLE N 603719.4 - E 606889.7 LAT: 32.6594805° N LONG: 104.1144789° W</p>		<p>CORNER DATA NAD 83 GRID - NM EAST A: FOUND BRASS CAP "1941" N 601577.6 - E 601175.4 B: FOUND BRASS CAP "1941" N 604227.7 - E 601181.4 C: FOUND BRASS CAP "1941" N 606860.6 - E 601187.3 D: FOUND BRASS CAP "1941" N 606894.9 - E 603787.9 E: FOUND BRASS CAP "1941" N 606928.4 - E 606391.3 F: FOUND BRASS CAP "1941" N 606910.2 - E 606391.6 G: FOUND 8"x5"x5" LIMESTONE ROCK N 606873.0 - E 611431.9</p>		<p>H: FOUND 1/2" REBAR N 601599.9 - E 611427.2 I: FOUND BRASS CAP "1941" N 601636.7 - E 606394.0 J: FOUND BRASS CAP "1941" N 601650.1 - E 606394.2 K: FOUND BRASS CAP "1941" N 601613.1 - E 603784.4 L: FOUND BRASS CAP "1941" N 604273.6 - E 606395.1 M: FOUND BRASS CAP "1941" N 604289.7 - E 606394.8</p>		<p>17 OPERATOR CERTIFICATION I hereby certify that the information contained herein is true and complete to the best of my knowledge and belief, and that this organization either owns a working interest or unleased mineral interest in the land including the proposed bottom hole location or has a right to drill this well at this location pursuant to a contract with an owner of such a mineral or working interest, or to a voluntary pooling agreement or a compulsory pooling order heretofore entered by the division.</p> <p>Signature _____ Date _____ Printed Name _____ E-mail Address _____</p>	
<p>18 SURVEYOR CERTIFICATION I hereby certify that the well location shown on this plat was plotted from field notes of actual surveys made by me or under my supervision, and that the same is true and correct to the best of my belief.</p> <p>4-25-18 Date of Survey Signature and Seal of Professional Surveyor 19680 Certificate Number REV. 9/20/18 B.H. MOVE</p>		<p>Job No.: LS1804529</p>					

District I
1625 N. French Dr., Hobbs, NM 88240
Phone: (575) 393-6161 Fax: (575) 393-0720
District II
811 S. First St., Artesia, NM 88210
Phone: (575) 748-1283 Fax: (575) 748-9720
District III
1000 Rio Brazos Road, Aztec, NM 87410
Phone: (505) 334-6178 Fax: (505) 334-6170
District IV
1220 S. St. Francis Dr., Santa Fe, NM 87505
Phone: (505) 476-3460 Fax: (505) 476-3462

State of New Mexico
Energy, Minerals & Natural Resources Department
OIL CONSERVATION DIVISION
1220 South St. Francis Dr.
Santa Fe, NM 87505

Form C-102
Revised August 1, 2011
Submit one copy to appropriate
District Office

☐ AMENDED REPORT

WELL LOCATION AND ACREAGE DEDICATION PLAT

1 API Number		2 Pool Code		3 Pool Name	
4 Property Code		5 Property Name RATTLESNAKE 13/18 B3LK STATE COM			
6 Well Number 1H		7 Elevation 3388'			
8 Operator Name MEWBOURNE OIL COMPANY		9 OGRID NO.			
10 Surface Location					
UL or lot no. L	Section 13	Township 19S	Range 28E	Lot Idn 2100	Feet from the SOUTH
Feet from the 205		East/West line WEST		County EDDY	
11 Bottom Hole Location If Different From Surface					
UL or lot no. K	Section 18	Township 19S	Range 29E	Lot Idn 2100	Feet from the SOUTH
Feet from the 2295		East/West line WEST		County EDDY	
12 Dedicated Acres	13 Joint or Infill	14 Consolidation Code	15 Order No.		

No allowable will be assigned to this completion until all interest have been consolidated or a non-standard unit has been approved by the division.

<p>16</p> <p>GEODETIC DATA NAD 83 GRID - NM EAST SURFACE LOCATION N 603679.9 - E 601385.0 LAT: 32.6594109° N LONG: 104.1382149° W BOTTOM HOLE N 603719.4 - E 608689.7 LAT: 32.6594805° N LONG: 104.1144789° W</p> <p>CORNER DATA NAD 83 GRID - NM EAST A: FOUND BRASS CAP "1941" N 601577.6 - E 601175.4 B: FOUND BRASS CAP "1941" N 604227.7 - E 601181.4 C: FOUND BRASS CAP "1941" N 606860.6 - E 601187.3 D: FOUND BRASS CAP "1941" N 606894.9 - E 603787.9 E: FOUND BRASS CAP "1941" N 606928.4 - E 606391.3 F: FOUND BRASS CAP "1941" N 606910.2 - E 606391.6 G: FOUND 8"x5"x5" LIMESTONE ROCK N 606873.0 - E 611431.9 H: FOUND 1/2" REBAR N 601599.9 - E 611427.2 I: FOUND BRASS CAP "1941" N 601636.7 - E 606394.0 J: FOUND BRASS CAP "1941" N 601650.1 - E 606394.2 K: FOUND BRASS CAP "1941" N 601613.1 - E 603784.4 L: FOUND BRASS CAP "1941" N 604273.6 - E 606395.1 M: FOUND BRASS CAP "1941" N 604289.7 - E 606394.8</p>		<p>17 OPERATOR CERTIFICATION</p> <p>I hereby certify that the information contained herein is true and complete to the best of my knowledge and belief, and that this organization either owns a working interest or an undivided mineral interest in the land including the proposed bottom hole location or has a right to drill this well at this location pursuant to a contract with an owner of such a mineral or working interest, or to a voluntary pooling agreement or a compulsory pooling order heretofore entered by the division.</p> <p>Signature _____ Date _____</p> <p>Printed Name _____</p> <p>E-mail Address _____</p>
<p>18 SURVEYOR CERTIFICATION</p> <p>I hereby certify that the well location shown on this plat was plotted from field notes of actual surveys made by me or under my supervision, and that the same is true and correct to the best of my belief.</p> <p>4-25-18 Date of Survey</p> <p>Signature and Seal of Professional Surveyor</p> <p>19680 Certificate Number</p> <p>REV. 9/20/18 B.H. MOVE</p>		

District I
1625 N. French Dr., Hobbs, NM 88240
Phone: (575) 393-6161 Fax: (575) 393-0720
District II
811 S. First St., Artesia, NM 88210
Phone: (575) 748-1283 Fax: (575) 748-9720
District III
1000 Rio Brazos Road, Aztec, NM 87410
Phone: (505) 334-6178 Fax: (505) 334-6170
District IV
1220 S. St. Francis Dr., Santa Fe, NM 87505
Phone: (505) 476-3460 Fax: (505) 476-3462

State of New Mexico
Energy, Minerals & Natural Resources Department
OIL CONSERVATION DIVISION
1220 South St. Francis Dr.
Santa Fe, NM 87505

Form C-102
Revised August 1, 2011
Submit one copy to appropriate
District Office

☐ AMENDED REPORT

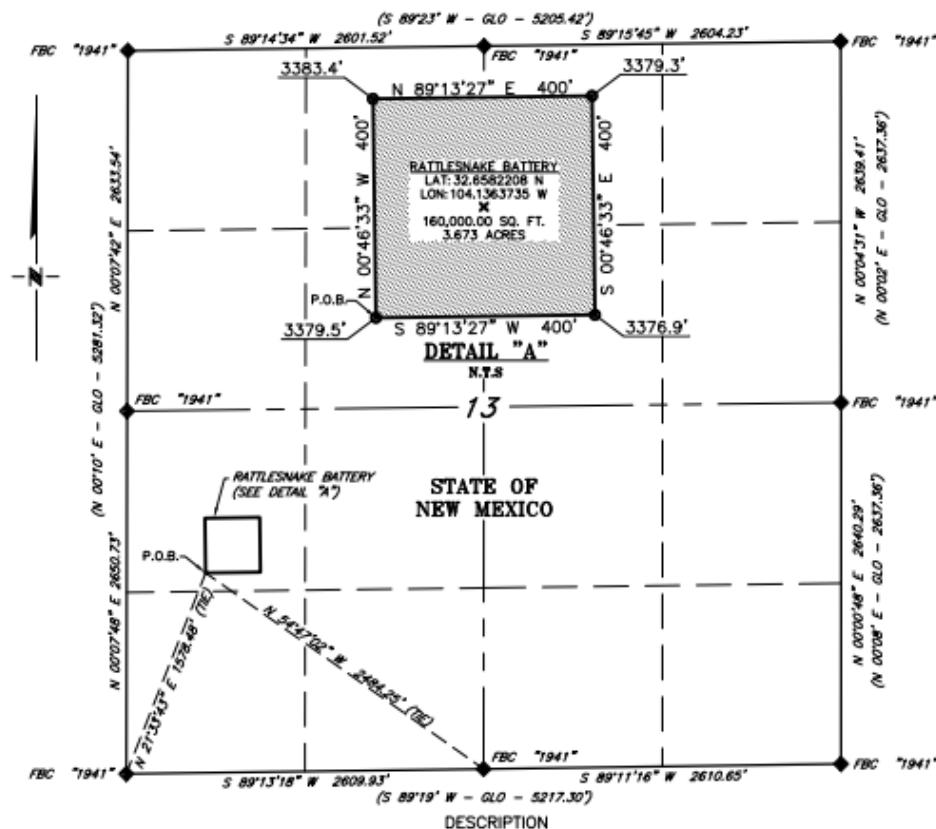
WELL LOCATION AND ACREAGE DEDICATION PLAT

1 API Number		2 Pool Code		3 Pool Name	
4 Property Code		5 Property Name RATTLESNAKE 13/18 B3MN STATE COM			
6 Well Number 1H		7 Elevation 3388'			
8 Operator Name MEWBOURNE OIL COMPANY		9 OGRID NO.			
10 Surface Location					
UL or lot no. L	Section 13	Township 19S	Range 28E	Lot Idn 2070	Feet From the SOUTH
Feet From the 205		East/West line WEST		County EDDY	
11 Bottom Hole Location If Different From Surface					
UL or lot no. N	Section 18	Township 19S	Range 29E	Lot Idn 660	Feet from the SOUTH
Feet from the 2295		East/West line WEST		County EDDY	
12 Dedicated Acres		13 Joint or Infill		14 Consolidation Code	
15 Order No.					

No allowable will be assigned to this completion until all interest have been consolidated or a non-standard unit has been approved by the division.

<p>16</p> <p>CORNER DATA NAD 83 GRID - NM EAST</p> <p>GEODETIC DATA NAD 83 GRID - NM EAST N: 603649.9 - E: 601385.0 LAT: 32.6593287° N LONG: 104.1362153° W</p> <p>SURFACE LOCATION N: 602279.8 - E: 608688.5 LAT: 32.6555233° N LONG: 104.1144927° W</p> <p>BOTTOM HOLE N: 606928.4 - E: 606391.3 LAT: 32.6555233° N LONG: 104.1144927° W</p> <p>FOUND 8"x5"x5" LIMESTONE ROCK N: 606873.0 - E: 611431.9</p> <p>FOUND 1/2" REBAR N: 601599.9 - E: 611427.2</p> <p>FOUND BRASS CAP "1941" N: 601577.6 - E: 601175.4</p> <p>FOUND BRASS CAP "1941" N: 604227.7 - E: 601181.4</p> <p>FOUND BRASS CAP "1941" N: 606860.6 - E: 601187.3</p> <p>FOUND BRASS CAP "1941" N: 606894.9 - E: 603787.9</p> <p>FOUND BRASS CAP "1941" N: 606928.4 - E: 606391.3</p> <p>FOUND BRASS CAP "1941" N: 601613.1 - E: 603784.4</p> <p>FOUND BRASS CAP "1941" N: 606910.2 - E: 606391.6</p> <p>FOUND BRASS CAP "1941" N: 604289.7 - E: 606394.8</p> <p>FOUND BRASS CAP "1941" N: 604273.6 - E: 606395.1</p> <p>FOUND BRASS CAP "1941" N: 601650.1 - E: 606394.2</p>		<p>17 OPERATOR CERTIFICATION I hereby certify that the information contained herein is true and complete to the best of my knowledge and belief, and that this organization either owns a working interest or unleased mineral interest in the land including the proposed bottom hole location or has a right to drill this well at this location pursuant to a contract with an owner of such a mineral or working interest, or to a voluntary pooling agreement or a compulsory pooling order heretofore entered by the division.</p> <p>Signature _____ Date _____</p> <p>Printed Name _____</p> <p>E-mail Address _____</p>
<p>18 SURVEYOR CERTIFICATION I hereby certify that the well location shown on this plat was plotted from field notes of actual surveys made by me or under my supervision, and that the same is true and correct to the best of my belief.</p> <p>11-04-2019 Date of Survey</p> <p>Signature and Seal of Professional Surveyor _____</p> <p>19680 Certificate Number</p>		<p>19680 Certificate Number</p> <p>Job No.: LS19101059</p>

**PROPOSED BATTERY FOR THE RATTLESNAKE 13/18 STATE COM WELLS
SECTION 13, T19S, R28E,
N. M. P. M., EDDY CO., NEW MEXICO**



A tract of land situated in Section 13, Township 19 South, Range 28 East, N. M. P. M., Eddy County, New Mexico, across State of New Mexico land, and being more particularly described by metes and bounds as follows:

BEGINNING at a point, which bears N 54°47'02" W, 2,484.25 feet, from a brass cap, stamped "1941", found for the South quarter corner of Section 13 and bears N 21°33'43" E, 1,578.48 feet from a brass cap, stamped "1941", found for the Southwest corner of Section 13;

Thence N 00°46'33" W, 400 feet, to a point;

Thence N 89°13'27" E, 400 feet, to a point;

Thence S 00°46'33" E, 400 feet, to a point;

Thence S 89°13'27" W, 400 feet, to the Point of Beginning.

Said tract of land contains 160,000.00 square feet or 3.673 acres, more or less and is allocated by forties as follows:

NW 1/4 SW 1/4 160,000.00 Sq. Ft. 3.673 Acres

SCALE: 1" = 1000'
0 500' 1000'

BEARINGS ARE GRID NAD 83
NAD EAST
DISTANCES ARE HORIZ. GROUND.

LEGEND

() RECORD DATA - GLO
◆ FOUND MONUMENT
AS NOTED
P.O.B. POINT OF BEGINNING

I, R. M. Howett, a N. M. Professional Surveyor, hereby certify that I prepared this plat from an actual survey made on the ground under my direct supervision, said survey and plat meet the Min. Stds. for Land Surveying in the State of N. M. and are true and correct to the best of my knowledge and belief.

Robert M. Howett
Robert M. Howett NM PS 19680



Copyright 2016 - All Rights Reserved

NO.	REVISION	DATE
JOB NO.:	LS19101059	
DWG. NO.:	19101059-6	

RRC

701 S. CECIL ST., HOBBS, NM 88240 (575) 964-8200

SCALE: 1" = 1000'
DATE: 11-04-2019
SURVEYED BY: ML/MF
DRAWN BY: KAKN
APPROVED BY: RMH
SHEET: 1 OF 1

DATE IN	SUSPENSE	ENGINEER	LOGGED IN	TYPE	APP NO.
---------	----------	----------	-----------	------	---------

ABOVE THIS LINE FOR DIVISION USE ONLY

NEW MEXICO OIL CONSERVATION DIVISION

- Engineering Bureau -



ADMINISTRATIVE APPLICATION CHECKLIST

THIS CHECKLIST IS MANDATORY FOR ALL ADMINISTRATIVE APPLICATIONS FOR EXCEPTIONS TO DIVISION RULES AND REGULATIONS WHICH REQUIRE PROCESSING AT THE DIVISION LEVEL IN SANTA FE

Application Acronyms:

[NSL-Non-Standard Location] [NSP-Non-Standard Proration Unit] [SD-Simultaneous Dedication]
[DHC-Downhole Commingling] [CTB-Lease Commingling] [PLC-Pool/Lease Commingling]
[PC-Pool Commingling] [OLS - Off-Lease Storage] [OLM-Off-Lease Measurement]
[WFX-Waterflood Expansion] [PMX-Pressure Maintenance Expansion]
[SWD-Salt Water Disposal] [IPI-Injection Pressure Increase]
[EOR-Qualified Enhanced Oil Recovery Certification] [PPR-Positive Production Response]

[1] **TYPE OF APPLICATION** - Check Those Which Apply for [A]

[A] Location - Spacing Unit - Simultaneous Dedication
☐ NSL ☐ NSP ☐ SD

Check One Only for [B] or [C]

[B] Commingling - Storage - Measurement
☐ DHC ☐ CTB ☒ PLC ☐ PC ☐ OLS ☐ OLM

[C] Injection - Disposal - Pressure Increase - Enhanced Oil Recovery
☐ WFX ☐ PMX ☐ SWD ☐ IPI ☐ EOR ☐ PPR

[D] Other: Specify _____

[2] **NOTIFICATION REQUIRED TO:** - Check Those Which Apply, or ☐ Does Not Apply

[A] ☒ Working, Royalty or Overriding Royalty Interest Owners

[B] ☐ Offset Operators, Leaseholders or Surface Owner

[C] ☐ Application is One Which Requires Published Legal Notice

[D] ☒ Notification and/or Concurrent Approval by BLM or SLO
 U.S. Bureau of Land Management - Commissioner of Public Lands, State Land Office

[E] ☐ For all of the above, Proof of Notification or Publication is Attached, and/or,

[F] ☐ Waivers are Attached

[3] **SUBMIT ACCURATE AND COMPLETE INFORMATION REQUIRED TO PROCESS THE TYPE OF APPLICATION INDICATED ABOVE.**

[4] **CERTIFICATION:** I hereby certify that the information submitted with this application for administrative approval is **accurate** and **complete** to the best of my knowledge. I also understand that **no**

action will be taken on this application until the required information and notifications are submitted to the Division.

Note: Statement must be completed by an individual with managerial and/or supervisory capacity.

Chad Cole
11/2/2021

Regulatory Specialist

Print or Type Name
Date

Signature

Title

ccole@mewbourne.com
e-mail Address

From: [McClure, Dean, EMNRD](#) on behalf of [Engineer, OCD, EMNRD](#)
To: [Chad Cole](#)
Cc: [McClure, Dean, EMNRD](#); [Wrinkle, Justin, EMNRD](#); [Powell, Brandon, EMNRD](#); lisa@rwbyram.com; [Dawson, Scott](#)
Subject: Approved Administrative Order CTB-1063
Date: Monday, October 31, 2022 5:36:03 PM
Attachments: [CTB1063 Order.pdf](#)

NMOCD has issued Administrative Order CTB-1063 which authorizes Mewbourne Oil Company (14744) to surface commingle or off-lease measure, as applicable, the following wells:

Well API	Well Name	UL or Q/Q	S-T-R	Pool
30-015-46061	Parkchester 24 23 B2AD State Com #1H	N/2 N/2	23-19S-28E	55510
		N/2 N/2	24-19S-28E	
30-015-47311	Parkchester 24 23 B2HE State Com #1H	S/2 N/2	23-19S-28E	55510
		S/2 N/2	24-19S-28E	
30-015-48345	Parkchester 24 23 B2IL State Com #1H	N/2 S/2	23-19S-28E	55510
		N/2 S/2	24-19S-28E	
30-015-48346	Parkchester 24 23 B2PM State Com #1H	S/2 S/2	23-19S-28E	55510
		S/2 S/2	24-19S-28E	
30-015-46062	Parkchester 24 23 B3AD State Com #2H	N/2 N/2	23-19S-28E	55510
		N/2 N/2	24-19S-28E	
30-015-47310	Parkchester 24 23 B3HE State Com #2H	S/2 N/2	23-19S-28E	55510
		S/2 N/2	24-19S-28E	
30-015-45272	Rattlesnake 13 18 B2LK State Com #1H	N/2 S/2	13-19S-28E	55510
		N/2 SW/4	18-19S-29E	
30-015-45273	Rattlesnake 13 18 B3LK State Com #1H	N/2 S/2	13-19S-28E	55510
		N/2 SW/4	18-19S-29E	
30-015-46641	Rattlesnake 13 18 B2MN State Com #1H	S/2 S/2	13-19S-28E	55510
		S/2 SW/4	18-19S-29E	

The administrative order is attached to this email and can also be found online at OCD Imaging.

Please review the content of the order to ensure you are familiar with the authorities granted and any conditions of approval. If you have any questions regarding this matter, please contact me.

Dean McClure
 Petroleum Engineer, Oil Conservation Division
 New Mexico Energy, Minerals and Natural Resources Department
 (505) 469-8211

**STATE OF NEW MEXICO
ENERGY, MINERALS AND NATURAL RESOURCES DEPARTMENT
OIL CONSERVATION DIVISION**

**APPLICATION FOR SURFACE COMMINGLING
SUBMITTED BY MEWBOURNE OIL COMPANY**

ORDER NO. CTB-1063

ORDER

The Director of the New Mexico Oil Conservation Division (“OCD”), having considered the application and the recommendation of the OCD Engineering Bureau, issues the following Order.

FINDINGS OF FACT

1. Mewbourne Oil Company (“Applicant”) submitted a complete application to surface commingle the gas production from the pools, leases, and wells identified in Exhibit A (“Application”).
2. Applicant proposed a method to allocate the gas production to the pools, leases, and wells to be commingled.
3. To the extent that ownership is identical, Applicant submitted a certification by a licensed attorney or qualified petroleum landman that the ownership in the pools, leases, and wells to be commingled is identical as defined in 19.15.12.7.B. NMAC.
4. To the extent that ownership is diverse, Applicant provided notice of the Application to all persons owning an interest in the gas production to be commingled, including the owners of royalty and overriding royalty interests, regardless of whether they have a right or option to take their interests in kind, and those persons either submitted a written waiver or did not file an objection to the Application.
5. Applicant provided notice of the Application to the Bureau of Land Management (“BLM”) or New Mexico State Land Office (“NMSLO”), as applicable.

CONCLUSIONS OF LAW

6. OCD has jurisdiction to issue this Order pursuant to the Oil and Gas Act, NMSA 1978, §§ 70-2-6, 70-2-11, 70-2-12, 70-2-16, and 70-2-17, 19.15.12. NMAC, and 19.15.23. NMAC.
7. Applicant satisfied the notice requirements for the Application in accordance with 19.15.12.10.A.(2) NMAC, 19.15.12.10.C.(4)(c) NMAC, and 19.15.12.10.C.(4)(e) NMAC, as applicable.
8. Applicant satisfied the notice requirements for the Application in accordance with 19.15.23.9.A.(5) NMAC and 19.15.23.9.A.(6) NMAC, as applicable.
9. Applicant’s proposed method of allocation, as modified herein, complies with 19.15.12.10.B.(1) NMAC or 19.15.12.10.C.(1) NMAC, as applicable.

10. Commingling of gas production from state, federal, or tribal leases shall not commence until approved by the BLM or NMSLO, as applicable, in accordance with 19.15.12.10.B.(3) NMAC and 19.15.12.10.C.(4)(h) NMAC.
11. By granting the Application with the conditions specified below, this Order prevents waste and protects correlative rights, public health, and the environment.

ORDER

1. Applicant is authorized to surface commingle gas production from the pools, leases, and wells identified in Exhibit A.

Applicant is authorized to store and measure gas production off-lease from the pools, leases, and wells identified in Exhibit A at a central tank battery or gas title transfer meter described in Exhibit A.

2. For matters of surface commingling and off-lease storing and measuring gas production and for the wells identified in Exhibit A, this Order supersedes Order CTB-1050.
3. The gas production for each well identified in Exhibit A shall be separated and metered prior to commingling it with production from another well.
4. Applicant shall measure and market the commingled gas at a well pad, central delivery point, central tank battery, or gas title transfer meter described in Exhibit A in accordance with this Order and 19.15.19.9. NMAC, provided however that if the gas is vented or flared, and regardless of the reason or authorization pursuant to 19.15.28.8.B. NMAC for such venting or flaring, Applicant shall measure or estimate the gas in accordance with 19.15.28.8.E. NMAC.
5. Applicant shall calibrate the meters used to measure or allocate gas production in accordance with 19.15.12.10.C.(2) NMAC.
6. If the commingling of gas production from any pool, lease, or well reduces the value of the commingled gas production to less than if it had remained segregated, no later than sixty (60) days after the decrease in value has occurred Applicant shall submit a new surface commingling application to OCD to amend this Order to remove the pool, lease, or well whose gas production caused the decrease in value. If Applicant fails to submit a new application, this Order shall terminate on the following day, and if OCD denies the application, this Order shall terminate on the date of such action.
7. Applicant shall not commence commingling oil or gas production from state, federal, or tribal leases until approved by the BLM or NMSLO, as applicable.
8. If OCD determines that Applicant has failed to comply with any provision of this Order, OCD may take any action authorized by the Oil and Gas Act or the New Mexico Administrative Code (NMAC).
9. OCD retains jurisdiction of this matter and reserves the right to modify or revoke this Order as it deems necessary.

**STATE OF NEW MEXICO
OIL CONSERVATION DIVISION**

A handwritten signature in black ink, appearing to read 'A. Sandoval', is written over a horizontal line.

**ADRIENNE E. SANDOVAL
DIRECTOR**

DATE: 10/31/2022

State of New Mexico
Energy, Minerals and Natural Resources Department

Exhibit A

Order: **CTB-1063**

Operator: **Mewbourne Oil Company (14744)**

Central Tank Battery: **Parkchester Battery**

Central Tank Battery Location: **UL A, Section 24, Township 19 South, Range 28 East**

Central Tank Battery: **Rattlesnake 13 18 B2LK State Com 1H Battery**

Central Tank Battery Location: **UL L, Section 13, Township 19 South, Range 28 East**

Gas Title Transfer Meter Location: **UL M, Section 13, Township 19 South, Range 28 East**

Pools

Pool Name	Pool Code
SCANLON DRAW;BONE SPRING	55510

Leases as defined in 19.15.12.7(C) NMAC

Lease	UL or Q/Q	S-T-R
CA Bone Spring NMSLO PUN 1385098 & 1380854	N/2 N/2	23-19S-28E
	N/2 N/2	24-19S-28E
CA Bone Spring NMSLO PUN 1391065	S/2 N/2	23-19S-28E
	S/2 N/2	24-19S-28E
CA Bone Spring NMSLO PUN 1393056	N/2 S/2	23-19S-28E
	N/2 S/2	24-19S-28E
CA Bone Spring NMSLO PUN 1392904	S/2 S/2	23-19S-28E
	S/2 S/2	24-19S-28E
CA Bone Spring NMSLO PUN 1391808	S/2 S/2	13-19S-28E
	S/2 SW/4	18-19S-29E
CA Bone Spring NMSLO PUN 1391584	N/2 S/2	13-19S-28E
	N/2 SW/4	18-19S-29E

Wells

Well API	Well Name	UL or Q/Q	S-T-R	Pool
30-015-46061	Parkchester 24 23 B2AD State Com #1H	N/2 N/2	23-19S-28E	55510
		N/2 N/2	24-19S-28E	
30-015-47311	Parkchester 24 23 B2HE State Com #1H	S/2 N/2	23-19S-28E	55510
		S/2 N/2	24-19S-28E	
30-015-48345	Parkchester 24 23 B2IL State Com #1H	N/2 S/2	23-19S-28E	55510
		N/2 S/2	24-19S-28E	
30-015-48346	Parkchester 24 23 B2PM State Com #1H	S/2 S/2	23-19S-28E	55510
		S/2 S/2	24-19S-28E	
30-015-46062	Parkchester 24 23 B3AD State Com #2H	N/2 N/2	23-19S-28E	55510
		N/2 N/2	24-19S-28E	
30-015-47310	Parkchester 24 23 B3HE State Com #2H	S/2 N/2	23-19S-28E	55510
		S/2 N/2	24-19S-28E	
30-015-45272	Rattlesnake 13 18 B2LK State Com #1H	N/2 S/2	13-19S-28E	55510
		N/2 SW/4	18-19S-29E	

30-015-45273	Rattlesnake 13 18 B3LK State Com #1H	N/2 S/2	13-19S-28E	55510
		N/2 SW/4	18-19S-29E	
30-015-46641	Rattlesnake 13 18 B2MN State Com #1H	S/2 S/2	13-19S-28E	55510
		S/2 SW/4	18-19S-29E	

District I

1625 N. French Dr., Hobbs, NM 88240
Phone:(575) 393-6161 Fax:(575) 393-0720

District II

811 S. First St., Artesia, NM 88210
Phone:(575) 748-1283 Fax:(575) 748-9720

District III

1000 Rio Brazos Rd., Aztec, NM 87410
Phone:(505) 334-6178 Fax:(505) 334-6170

District IV

1220 S. St Francis Dr., Santa Fe, NM 87505
Phone:(505) 476-3470 Fax:(505) 476-3462

State of New Mexico
Energy, Minerals and Natural Resources
Oil Conservation Division
1220 S. St Francis Dr.
Santa Fe, NM 87505

CONDITIONS

Action 62003

CONDITIONS

Operator: MEWBOURNE OIL CO P.O. Box 5270 Hobbs, NM 88241	OGRID: 14744
	Action Number: 62003
	Action Type: [C-107] Surface Commingle or Off-Lease (C-107B)

CONDITIONS

Created By	Condition	Condition Date
dmcclure	Please review the content of the order to ensure you are familiar with the authorities granted and any conditions of approval. If you have any questions regarding this matter, please contact me.	11/1/2022