

Revised March 23, 2017

ID NO. 155120

NSL - 8526

RECEIVED:	REVIEWER:	TYPE:	APP NO: <b>pLEL2301749080</b>
-----------	-----------	-------	-------------------------------

ABOVE THIS TABLE FOR OCD DIVISION USE ONLY

**NEW MEXICO OIL CONSERVATION DIVISION**  
 - Geological & Engineering Bureau -  
 1220 South St. Francis Drive, Santa Fe, NM 87505

**ADMINISTRATIVE APPLICATION CHECKLIST**

THIS CHECKLIST IS MANDATORY FOR ALL ADMINISTRATIVE APPLICATIONS FOR EXCEPTIONS TO DIVISION RULES AND  
 REGULATIONS WHICH REQUIRE PROCESSING AT THE DIVISION LEVEL IN SANTA FE

**Applicant:** OXY USA INC. (16696) **OGRID Number:** 16696  
**Well Name:** NIMITZ MDP1 13 1 FEDERAL COM #001H **API:** 30-015-48588  
**Pool:** PURPLE SAGE WOLFCAMP (GAS) **Pool Code:** 98220

**SUBMIT ACCURATE AND COMPLETE INFORMATION REQUIRED TO PROCESS THE TYPE OF APPLICATION  
 INDICATED BELOW**

**1) TYPE OF APPLICATION:** Check those which apply for [A]

A. Location – Spacing Unit – Simultaneous Dedication

☒ NSL      ☐ NSP (PROJECT AREA)      ☐ NSP (PRORATION UNIT)      ☐ SD

B. Check one only for [ I ] or [ II ]

[ I ] Commingling – Storage – Measurement

☐ DHC    ☐ CTB    ☐ PLC    ☐ PC    ☐ OLS    ☐ OLM

[ II ] Injection – Disposal – Pressure Increase – Enhanced Oil Recovery

☐ WFX    ☐ PMX    ☐ SWD    ☐ IPI    ☐ EOR    ☐ PPR
**2) NOTIFICATION REQUIRED TO:** Check those which apply.

- A. ☒ Offset operators or lease holders  
 B. ☐ Royalty, overriding royalty owners, revenue owners  
 C. ☐ Application requires published notice  
 D. ☐ Notification and/or concurrent approval by SLO  
 E. ☒ Notification and/or concurrent approval by BLM  
 F. ☐ Surface owner  
 G. ☒ For all of the above, proof of notification or publication is attached, and/or,  
 H. ☐ No notice required

**FOR OCD ONLY**

- ☐ Notice Complete  
☐ Application  
 Content  
 Complete

- 3) CERTIFICATION:** I hereby certify that the information submitted with this application for administrative approval is **accurate** and **complete** to the best of my knowledge. I also understand that **no action** will be taken on this application until the required information and notifications are submitted to the Division.

**Note: Statement must be completed by an individual with managerial and/or supervisory capacity.**

01/17/2023

Date

LESLIE REEVES

Print or Type Name

713-497-2492

Phone Number

Leslie T. Reeves

Signature

LESLIE\_REEVES@OXY.COM

e-mail Address



## OXY USA Inc

5 Greenway Plaza, Suite 110  
Houston, TX 77046-0521

January 17, 2023

New Mexico Oil Conservation Division  
1220 South St. Francis Dr.  
Santa Fe, NM 87505

Attention: Leonard Lowe

Re: ***Application for Administrative Approval of Non-Standard Location  
Nimitz MDP1 13-1 Federal Com 1H – Purple Sage Wolfcamp  
Surface – 211' FSL 2413' FEL Unit O Sec 13 T24S R30E  
First Take Point – 100' FSL 1668' FEL Unit O Sec 13 T24S R30E  
Last Take Point – 100' FNL 1666' FEL Unit B,(Lot 2) Sec 1 T24S R30E  
Bottom Hole – 20' FNL 1666' FEL Unit B, (Lot 2) Sec 1 T24S R30E  
Eddy County, New Mexico***

Dear Mr. Lowe:

OXY USA Inc. respectfully requests administrative approval of a non-standard location on the Nimitz MDP1 13-1 Federal Com 1H well, API Number-30-015-48588, Property Code 331061. The #1H well is proposed to be completed in the Purple Sage Wolfcamp pool, Pool Code 98220 which has special pool rules specifying the completed interval must be located 330 feet from the exterior boundary of the applicable spacing unit. The proposed completed interval is projected as follows:

Surface – 211' FSL 2413' FEL Unit O Sec 13 T24S R30E  
First Take Point – 100' FSL 1668' FEL Unit O Sec 13 T24S R30E  
Last Take Point – 100' FNL 1666' FEL Unit B,(Lot 2) Sec 1 T24S R30E  
Bottom Hole – 20' FNL 1666' FEL Unit B, (Lot 2) Sec 1 T24S R30E

The planned Horizontal Spacing Unit will be 959.9-acres including the West ½ of the East ½ and the East ½ of the West 1/2 of sections 1, 12 and 13, T24S R30E.

- The adjoining units which the unorthodox location encroaches are located to the North in T23S R30E, Section 36 – Units N and O, which show XTO Energy, Inc as the interest owners.
- To the South the adjoining units which the unorthodox location encroaches are in T24S R30E, Section 24 & 25 – (West ½ Wolfcamp HSU) Units D, C, E, F, L, K, M, N. which is operated by XTO Energy, Inc. and also (East ½ Wolfcamp HSU) Units A, B, G, H, I, J, O, P which is operated by XTO Energy, Inc.

Approval of the unorthodox, completed interval will allow for efficient spacing of horizontal wells and thereby prevent waste.

To support this request, the following information has been submitted for your review:

1. C-102 Plat for the proposed well and additional plats with offsetting well and affected spacing units.
2. List of affected offset parties in each adjoining spacing unit in the same pool or formation located closer to the unorthodox well location than the minimum distance prescribed by applicable rule or order, copies of the signed certified return receipts will be furnished upon request.
3. Statement from Oxy Development Area Reservoir Engineer.

If you need any additional information, please call me at 713-497-2492.

Sincerely,

A handwritten signature in blue ink, appearing to read "Leslie Reeves".

Leslie Reeves  
Regulatory Advisor  
Leslie\_Reeves@oxy.com



## OXY USA Inc

5 Greenway Plaza, Suite 110  
Houston, TX 77046-0521

January 17, 2023

CERTIFIED MAIL – RETURN RECEIPT REQUESTED

Re: ***Application for Administrative Approval of Non-Standard Location  
Nimitz MDP1 13-1 Federal Com 1H – Purple Sage Wolfcamp  
Surface – 211' FSL 2413' FEL Unit O Sec 13 T24S R30E  
First Take Point – 100' FSL 1668' FEL Unit O Sec 13 T24S R30E  
Last Take Point – 100' FNL 1666' FEL Unit B, (Lot 2) Sec 1 T24S R30E  
Bottom Hole – 20' FNL 1666' FEL Unit B, (Lot 2) Sec 1 T24S R30E  
Eddy County, New Mexico***

To Whom it May Concern:

Enclosed is a copy of an application, filed with the New Mexico Oil Conservation Division by OXY USA Inc., requesting administrative approval for a non-standard location. As an affected party, notice is being provided to you pursuant to Rule 19.15.4.12(A)(2)(a), 19.15.15.9(A) and 19.15.16.15(B). The well is located as follows:

Surface – 211' FSL 2413' FEL Unit O Sec 13 T24S R30E  
First Take Point – 100' FSL 1668' FEL Unit O Sec 13 T24S R30E  
Last Take Point – 100' FNL 1666' FEL Unit B, (Lot 2) Sec 1 T24S R30E  
Bottom Hole – 20' FNL 1666' FEL Unit B, (Lot 2) Sec 1 T24S R30E

If you object to the well's location, you must notify the Division in writing no later than 20 days from the date the application is received by the NMOCD (1220 South St. Francis Drive, Santa Fe, NM 87505; Attention: Leonard Lowe).

If you need any additional information, you can contact Matt Cole at 713-366-5928 or myself at 713-497-2492.

Thank you,

A handwritten signature in blue ink that reads "Leslie Reeves". The signature is fluid and cursive, with the first name "Leslie" and last name "Reeves" clearly distinguishable.

Leslie Reeves  
Regulatory Advisor  
OXY USA Inc.

District I  
1625 N. French Dr., Hobbs, NM 88240  
Phone: (575) 393-6161 Fax: (575) 393-0720  
District II  
811 S. First St., Artesia, NM 88210  
Phone: (575) 748-1283 Fax: (575) 748-9720  
District III  
1000 Rio Brazos Road, Aztec, NM 87410  
Phone: (505) 334-6178 Fax: (505) 334-6170  
District IV  
1220 S. St. Francis Dr., Santa Fe, NM 87505  
Phone: (505) 476-3460 Fax: (505) 476-3462

State of New Mexico  
Energy, Minerals & Natural Resources Department  
OIL CONSERVATION DIVISION  
1220 South St. Francis Dr.  
Santa Fe, NM 87505

Form C-102  
Revised August 1, 2011  
Submit one copy to appropriate  
District Office  
☒ AMENDED REPORT

## WELL LOCATION AND ACREAGE DEDICATION PLAT

<sup>1</sup> API Number 30-015-48588	<sup>2</sup> Pool Code 98220	<sup>3</sup> Pool Name PURPLE SAGE WOLFCAMP
<sup>4</sup> Property Code 331061	<sup>5</sup> Property Name NIMITZ MDP1 13_1 FED COM	<sup>6</sup> Well Number 1H
<sup>7</sup> OGRID No. 16696	<sup>8</sup> Operator Name OXY USA INC.	<sup>9</sup> Elevation 3475'

<sup>10</sup> Surface Location

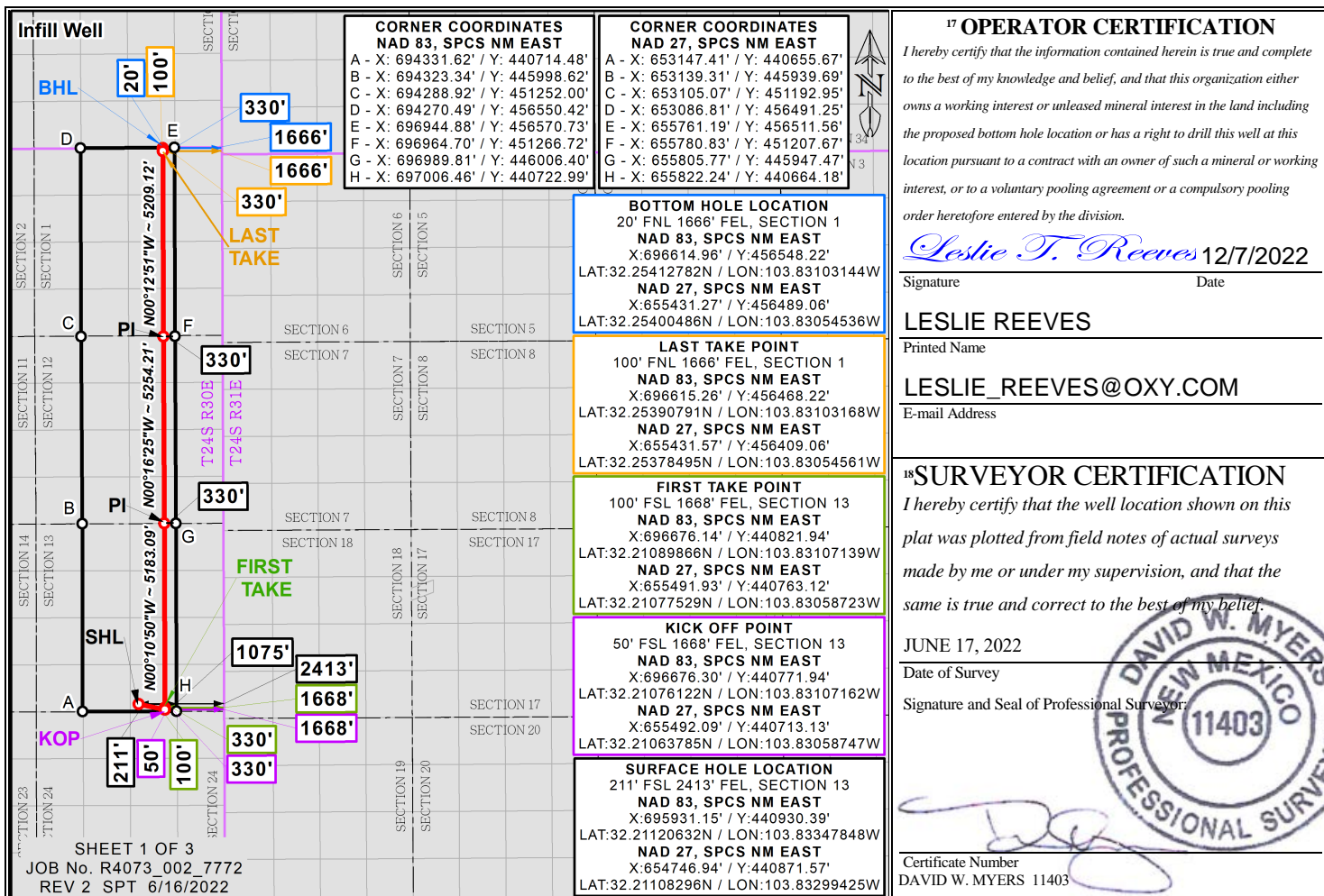
UL or lot no.	Section	Township	Range	Lot Idn	Feet from the	North/South line	Feet from the	East/West line	County
O	13	24S	30E		211	SOUTH	2413	EAST	EDDY

<sup>11</sup> Bottom Hole Location If Different From Surface

UL or lot no.	Section	Township	Range	Lot Idn	Feet from the	North/South line	Feet from the	East/West line	County
L 2	1	24S	30E		20	NORTH	1666	EAST	EDDY

<sup>12</sup> Dedicated Acres 959.9	<sup>13</sup> Joint or Infill	<sup>14</sup> Consolidation Code	<sup>15</sup> Order No.
--	-------------------------------	----------------------------------	-------------------------

No allowable will be assigned to this completion until all interests have been consolidated or a non-standard unit has been approved by the division.



Distances/areas relative to NAD 83 Combined Scale Factor: 0.99977392 Convergence Angle: 00°15'56.81002"

Horizontal Spacing Unit

Intent ☒ As Drilled ☐

API # <b>30-015-48588</b>		
Operator Name: <b>OXY USA INC.</b>	Property Name: <b>NIMITZ MDP1 13 1 FEDERAL COM</b>	Well Number <b>1H</b>

## Kick Off Point (KOP)

UL <b>O</b>	Section <b>13</b>	Township <b>24S</b>	Range <b>30E</b>	Lot	Feet <b>50</b>	From N/S <b>FSL</b>	Feet <b>1668</b>	From E/W <b>FEL</b>	County <b>EDDY</b>
Latitude <b>32.21076122</b>					Longitude <b>-103.83107162</b>				NAD <b>NAD83</b>

## First Take Point (FTP)

UL <b>O</b>	Section <b>13</b>	Township <b>24S</b>	Range <b>30E</b>	Lot	Feet <b>100</b>	From N/S <b>FSL</b>	Feet <b>1668</b>	From E/W <b>FEL</b>	County <b>EDDY</b>
Latitude <b>32.21089866</b>					Longitude <b>-103.83107139</b>				NAD <b>NAD83</b>

## Last Take Point (LTP)

UL <b>B</b>	Section <b>1</b>	Township <b>24S</b>	Range <b>30E</b>	Lot	Feet <b>100</b>	From N/S <b>FNL</b>	Feet <b>1666</b>	From E/W <b>FEL</b>	County <b>EDDY</b>
Latitude <b>32.25390791</b>					Longitude <b>-103.83103168</b>				NAD <b>NAD83</b>

Is this well the defining well for the Horizontal Spacing Unit? ☐ NIs this well an infill well? ☐ Y

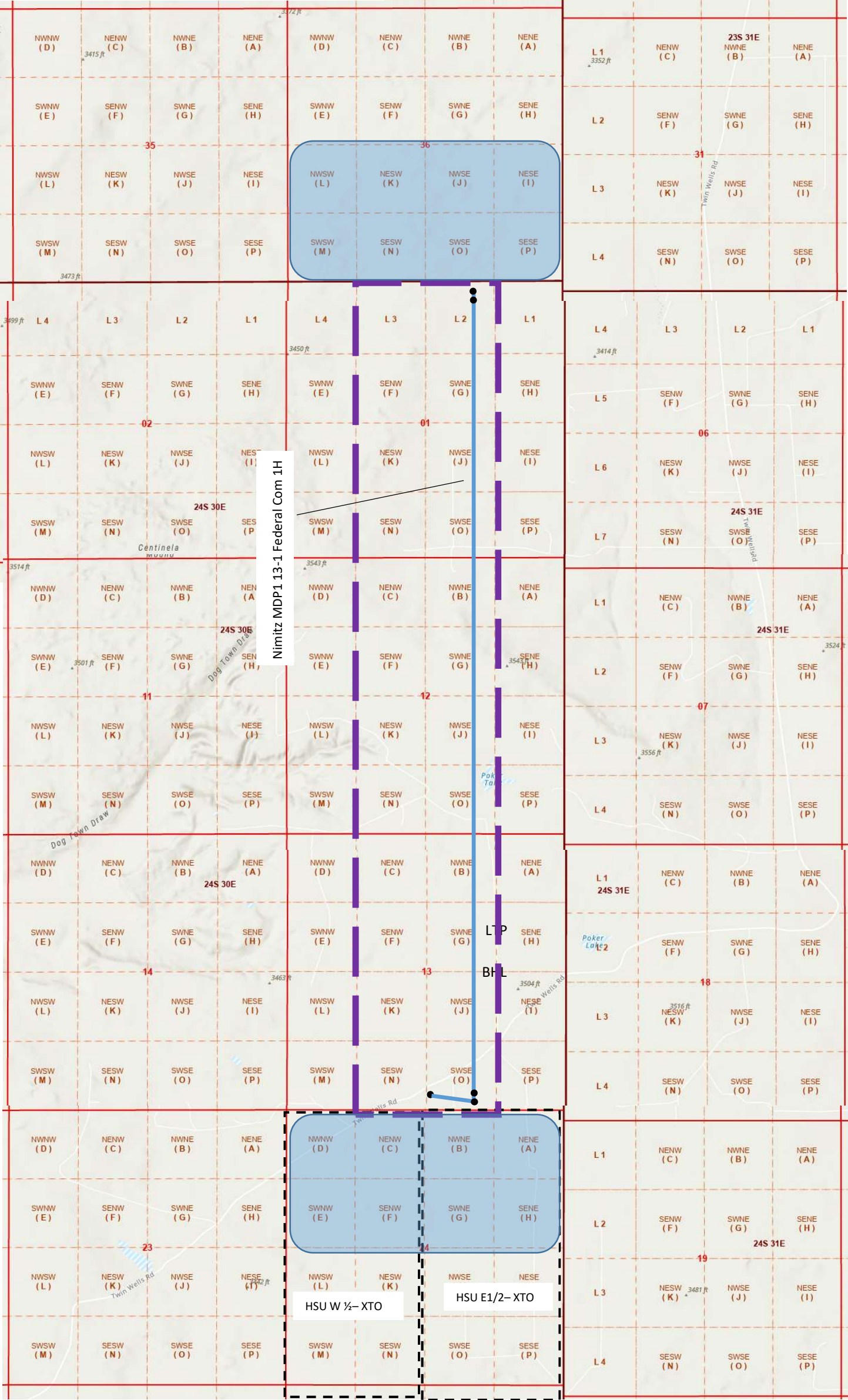
If infill is yes please provide API if available, Operator Name and well number for Defining well for Horizontal Spacing Unit.

API # <b>30-015-48589</b>		
Operator Name: <b>OXY USA INC.</b>	Property Name: <b>NIMITZ MDP1 13-1 FEDERAL COM</b>	Well Number <b>173H</b>

KZ 06/29/2018



OXY USA Inc.  
Nimitz MDP1 13-1 Federal Com 1H Section 13  
Township 24 South, Range 30 East, N.M.P.M.  
Eddy County, New Mexico





**Occidental Oil and Gas Corporation**  
**ATTN: Marshall McQueen**  
**5 Greenway Plaza, Suite 110**  
**Houston, TX 77046**  
**713-366-5799**  
**Marshall\_McQueen@oxy.com**

January 17, 2023

Mr. Leonard Lowe  
New Mexico Oil Conservation Division  
1220 South Francis Drive  
Santa Fe, New Mexico 87505

RE: ***Application for Nonstandard Location—Engineering Justification***  
***OXY USA Inc.***  
***Nimitz MDP 13-1 Federal Com 1H, 171H, 172H, 173H, 311H & 312H***  
***T24S R30E, Section 13, 12 & 1 – Eddy County***

Dear Mr. Lowe:

Oxy USA Inc. respectfully seeks approval for a non-standard location, decreasing the first and last take point for Nimitz MDP 13-1 Federal Com 1H, Nimitz MDP 13-1 Federal Com 171H, Nimitz MDP 13-1 Federal Com 172H, Nimitz MDP 13-1 Federal Com 173H, Nimitz MDP 13-1 Federal Com 311H and the Nimitz MDP 13-1 Federal Com 312H in the Wolfcamp formation of the Purple Sage Pool from 330 feet to 100 feet. It is Oxy's responsibility as a prudent operator to maximize lateral length and minimize reserves left in the ground. Decreasing the first and last take point will increase this well's effective lateral length by 460 feet and increase the estimated ultimate recovery of the well by approximately 3%. Any increase in first or last take point would result in untapped reserves left in the reservoir, and waste of a resource that would otherwise go undeveloped.

Sincerely,

A handwritten signature in blue ink, appearing to read "Marshall McQueen", written in a cursive style.

Marshall McQueen  
Development Manager

**Application Non-Standard Location - Service List**  
**OXY USA Inc.**  
**Nimitz MDP1 13-1 Federal Com 1H**

**Online Submission**

New Mexico Oil Conservation Division  
1220 South St. Francis Dr.  
Santa Fe, NM 87505

**Certified Mail # 7014 1820 0000 0732 6719**

Bureau of Land Management Carlsbad  
620 E. Greene Street  
Carlsbad, NM 88220-6292

**Offset Tracts Section 36 (T23S-R30E) - Units L, K, J, I, M, N, O, P, - No Existing WC HSU**

**Certified Mail # 7014 1820 0000 0732 6726**

**Offset Operator/Interest Owner**

XTO Energy Inc.  
22777 Springwoods Village Parkway  
Spring, TX 77389

**Existing WC Horizontal Spacing Unit Section 24 & 25 (T24S-R30E - Units C, D, E, F, K, L, M, N - W 1/2 HSU)**

**Existing WC Horizontal Spacing Unit Section 24 & 25 (T24S-R30E - Units A, B, G, H, I, J, O, P - E 1/2 HSU)**

**Certified Mail # 7014 1820 0000 0732 6726**

**Operator:**

XTO Energy Inc.  
22777 Springwoods Village Parkway  
Spring, TX 77389

Copies of this application were mailed to the following individuals, companies and organizations  
on or before January 17, 2023



---

Leslie Reeves, Regulatory Advisor  
OXY USA Inc.



**District I**  
1625 N. French Dr., Hobbs, NM 88240  
Phone:(575) 393-6161 Fax:(575) 393-0720  
**District II**  
811 S. First St., Artesia, NM 88210  
Phone:(575) 748-1283 Fax:(575) 748-9720  
**District III**  
1000 Rio Brazos Rd., Aztec, NM 87410  
Phone:(505) 334-6178 Fax:(505) 334-6170  
**District IV**  
1220 S. St Francis Dr., Santa Fe, NM 87505  
Phone:(505) 476-3470 Fax:(505) 476-3462

State of New Mexico  
Energy, Minerals and Natural Resources  
Oil Conservation Division  
1220 S. St Francis Dr.  
Santa Fe, NM 87505

CONDITIONS

Action 155120

CONDITIONS

Operator: OXY USA INC P.O. Box 4294 Houston, TX 772104294	OGRID: 16696
	Action Number: 155120
	Action Type: [UF-NSL] Non-Standard Location (NSL)

CONDITIONS

Created By	Condition	Condition Date
Ilowe	NSL-8526 is Approved	2/8/2023