

Revised March 23, 2017

ID NO. 233641

NSL - 2162

| | | | |
|-----------|-----------|-------|-------------------------------|
| RECEIVED: | REVIEWER: | TYPE: | APP NO: pLEL2317935658 |
|-----------|-----------|-------|-------------------------------|

ABOVE THIS TABLE FOR OCD DIVISION USE ONLY

NEW MEXICO OIL CONSERVATION DIVISION
 - Geological & Engineering Bureau -
 1220 South St. Francis Drive, Santa Fe, NM 87505

**ADMINISTRATIVE APPLICATION CHECKLIST**

THIS CHECKLIST IS MANDATORY FOR ALL ADMINISTRATIVE APPLICATIONS FOR EXCEPTIONS TO DIVISION RULES AND REGULATIONS WHICH REQUIRE PROCESSING AT THE DIVISION LEVEL IN SANTA FE

Applicant: EOG Resources, Inc. **OGRID Number:** 7377
Well Name: Wild Weasel 22 Fed Com 701H & Others **API:** Multiple
Pool: Pitchfork Ranch; Wolfcamp, South **Pool Code:** 96994

SUBMIT ACCURATE AND COMPLETE INFORMATION REQUIRED TO PROCESS THE TYPE OF APPLICATION INDICATED BELOW

1) TYPE OF APPLICATION: Check those which apply for [A]

A. Location – Spacing Unit – Simultaneous Dedication

☐ NSL☒ NSP (PROJECT AREA)☒ NSP (PRORATION UNIT)☐ SD

B. Check one only for [I] or [II]

[I] Commingling – Storage – Measurement

☐ DHC☐ CTB☐ PLC☐ PC☐ OLS☐ OLM

[II] Injection – Disposal – Pressure Increase – Enhanced Oil Recovery

☐ WFX☐ PMX☐ SWD☐ IPI☐ EOR☐ PPR**2) NOTIFICATION REQUIRED TO:** Check those which apply.A. ☒ Offset operators or lease holdersB. ☒ Royalty, overriding royalty owners, revenue ownersC. ☐ Application requires published noticeD. ☒ Notification and/or concurrent approval by SLOE. ☒ Notification and/or concurrent approval by BLMF. ☐ Surface ownerG. ☒ For all of the above, proof of notification or publication is attached, and/or,H. ☐ No notice required**FOR OCD ONLY**☐ Notice Complete☐ Application
Content
Complete

3) CERTIFICATION: I hereby certify that the information submitted with this application for administrative approval is **accurate** and **complete** to the best of my knowledge. I also understand that **no action** will be taken on this application until the required information and notifications are submitted to the Division.

Note: Statement must be completed by an individual with managerial and/or supervisory capacity.

Lisa Youngblood

Print or Type Name

06/28/2023

Date

(432)247-6331

Phone Number

lisa_youngblood@eogresources.com

e-mail Address

Lisa Youngblood
 Signature



Lisa Youngblood
Phone: (432) 247-6331
Email: lisa_youngblood@eogresources.com

June 28, 2023

VIA ONLINE FILING

Dylan Fuge, Acting Director
Oil Conservation Division
New Mexico Department of Energy, Minerals, and Natural Resources
1220 South St. Francis Drive
Santa Fe, New Mexico 87505

Re: Application of EOG Resources, Inc. for administrative approval of a 1280-acre non-standard horizontal spacing unit in the Pitchfork Ranch; Wolfcamp, South Pool (96994) comprised of Sections 22 and Section 27, Township 25 South, Range 34 East, NMPM, Lea County, New Mexico.

Dear Director Fuge,

Pursuant to 19.15.16.15(B)(5) NMAC, EOG Resources, Inc. ("EOG") (OGRID No. 7377) seeks administrative approval of a non-standard 1280-acre horizontal spacing unit comprised of Section 22 and Section 27, Township 25 South, Range 34 East, NMPM, Lea County, New Mexico. The proposed non-standard spacing is developed by the following wells:

- Wild Weasel 22 Fed Com No. 701H (API No. 30-025-45796) (drilled)
- Wild Weasel 22 Fed Com No. 702H (API No. 30-025-45797) (drilled)
- Wild Weasel 22 Fed Com No. 704H (API No. 30-025-45798) (drilled)
- Wild Weasel 22 Fed Com No. 705H (API No. 30-025-45799) (drilled)
- Wild Weasel 22 Fed Com No. 708H (API No. 30-025-45802) (drilled)
- Wild Weasel 22 Fed Com No. 709H (API No. 30-025-45803) (drilled)
- Wild Weasel 22 Fed Com No. 711H (API No. 30-025-46138) (drilled)
- Wild Weasel 22 Fed Com No. 712H (API No. 30-025-45805) (drilled)

The Division has placed all wells into the Pitchfork Ranch; Wolfcamp, South Pool (96994). As indicated above, the wells in the proposed non-standard spacing unit have been drilled and are producing. The acreage included in the non-standard spacing unit are the subject of a single Communitization Agreement, which has been approved by the BLM.

EOG seeks administrative approval of a non-standard spacing unit to develop the acreage as a single communitized area. Doing so allows EOG to efficiently locate surface facilities, reduce surface disturbance, consolidate roads, tanks and pipelines, and promote effective well spacing, thereby promoting conservation and preventing waste. A single surface facility also reduces emissions from multiple tank batteries. Division Rules contemplate and encourage oil and gas development, where possible, in enlarged areas of common ownership to minimize surface disturbance and to promote efficient well spacing, *see, e.g.*, 19.15.16.7.P NMAC; 19.15.16.15.B(8) NMAC; 19.15.16.15.C(7) NMAC, and authorize administrative approval of such a request, *see* 19.15.16.15(B)(5) NMAC.

Exhibit A is a map showing the proposed non-standard spacing unit, the subject leases, and the drilled wells.

Exhibit B is a copy the Well Location and Acreage Dedication Plat (C-102) for each of the wells within the proposed non-standard spacing unit.

Exhibit C is a lease map showing the notice tracts for the proposed non-standard spacing unit.

Exhibit D is a cross section exhibit showing the Wolfcamp target for these subject wells.

Exhibit E summarizes the cost savings and limitation of surface acreage disturbance accomplished by consolidating facilities through formation of a non-standard spacing unit.

Exhibit F is a list of parties affected by this application. Affected parties were provided a copy of the application with all attachments by certified mail, along with notice that any objection must be filed in writing with the Division within 20 days from the date the Division receives the application. Royalty owners, including BLM and SLO were provided a copy of the application. A copy of the notice letter, tracking information, and proof of mailing is included in **Exhibit G**.

Thank you for your attention to this matter.

Very truly yours,



Lisa Youngblood
Regulatory Specialist

Proposed Non-Standard Horizontal Spacing Unit: Wolfcamp Formation

Wild Weasel 22 Fed Com: All of Sections 22 and 27-25S-34E

Well Summary

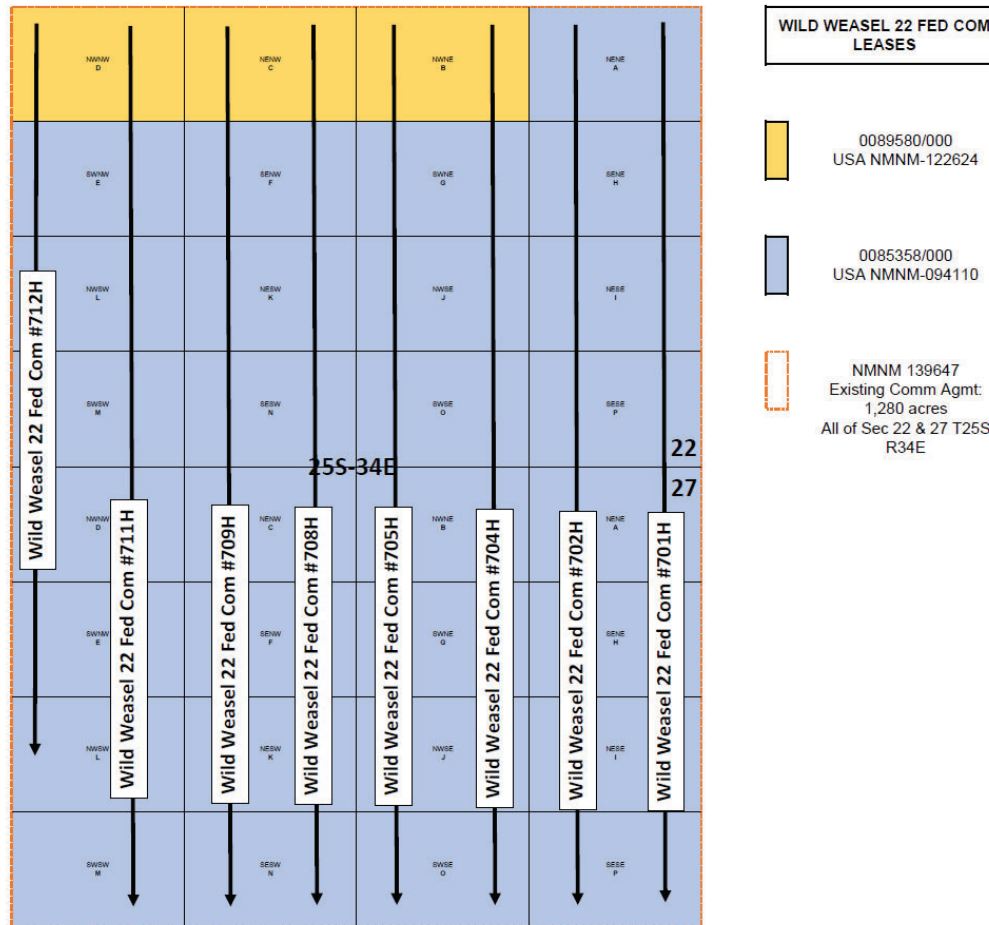


Exhibit A

District I
1625 N. French Dr., Hobbs, NM 88240
Phone: (575) 393-6161 Fax: (575) 393-0720
District II
811 S. First St., Artesia, NM 88210
Phone: (575) 748-1283 Fax: (575) 748-9720
District III
1000 Rio Brazos Road, Aztec, NM 87410
Phone: (505) 334-6178 Fax: (505) 334-6170
District IV
1220 S. St. Francis Dr., Santa Fe, NM 87505
Phone: (505) 476-3460 Fax: (505) 476-3462

State of New Mexico
Energy, Minerals & Natural Resources
Department
OIL CONSERVATION DIVISION
1220 South St. Francis Dr.
Santa Fe, NM 87505

FORM C-102

Revised August 1, 2011

Submit one copy to appropriate

District Office

☐ AMENDED REPORT

WELL LOCATION AND ACREAGE DEDICATION PLAT

| | | | |
|--|---|------------------------|--|
| ¹ API Number 30-025-45796 | | ² Pool Code | ³ Pool Name |
| ⁴ Property Code | ⁵ Property Name WILD WEASEL 22 FED COM | | ⁶ Well Number #701H |
| ⁷ OGRID No. 7377 | ⁸ Operator Name EOG RESOURCES, INC. | | ⁹ Elevation 3337' |

¹⁰Surface Location

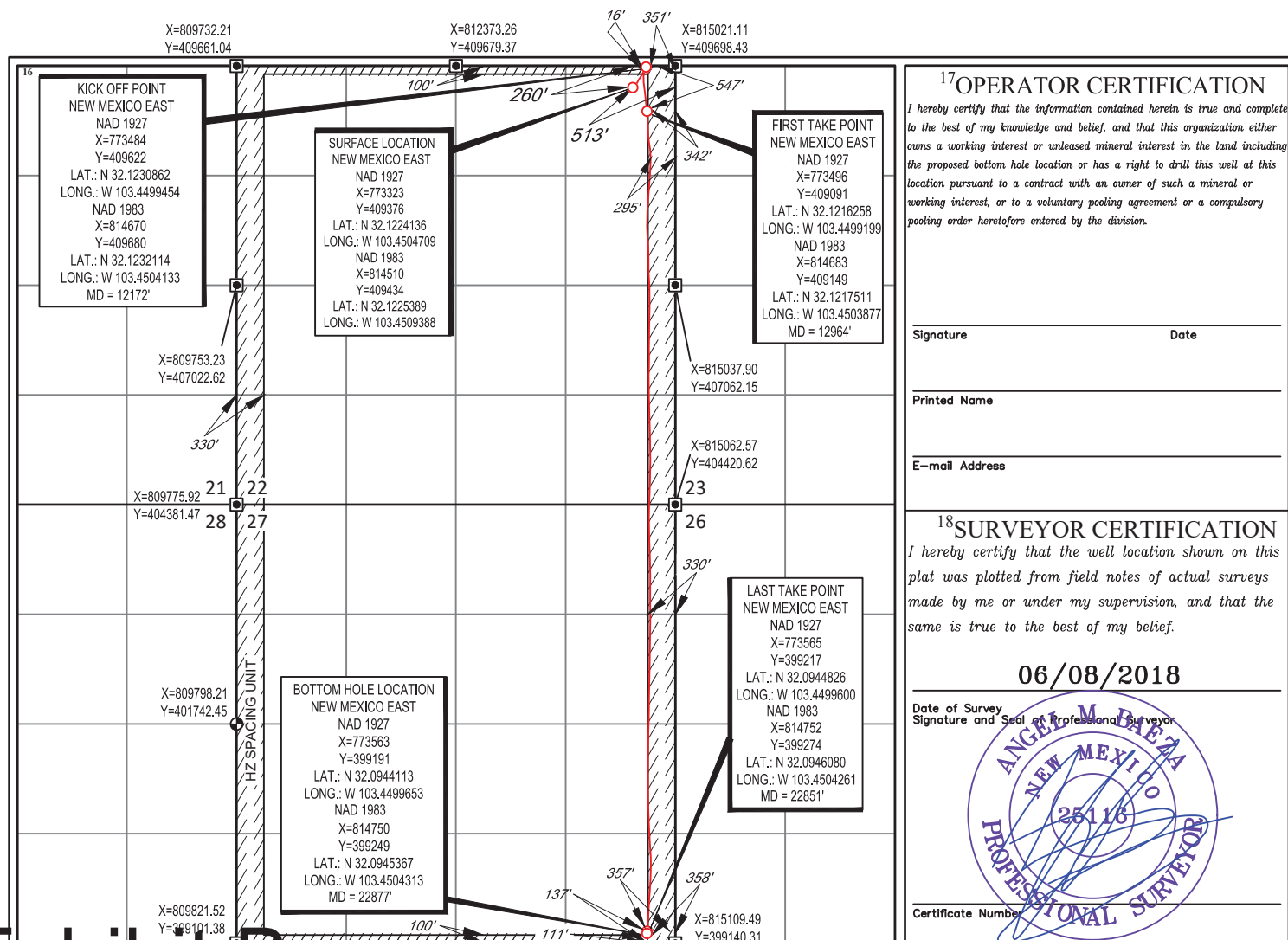
| UL or lot no. | Section | Township | Range | Lot Idn | Feet from the | North/South line | Feet from the | East/West line | County |
|---------------|-----------|-------------|-------------|----------|---------------|------------------|---------------|----------------|------------|
| A | 22 | 25-S | 34-E | - | 260' | NORTH | 513' | EAST | LEA |

¹¹Bottom Hole Location If Different From Surface

| UL or lot no. | Section | Township | Range | Lot Idn | Feet from the | North/South line | Feet from the | East/West line | County |
|---------------|-----------|-------------|-------------|----------|---------------|------------------|---------------|----------------|------------|
| P | 27 | 25-S | 34-E | - | 111' | SOUTH | 358' | EAST | LEA |

| | | | |
|---|-------------------------------|----------------------------------|-------------------------|
| ¹² Dedicated Acres 1280.00 | ¹³ Joint or Infill | ¹⁴ Consolidation Code | ¹⁵ Order No. |
|---|-------------------------------|----------------------------------|-------------------------|

No allowable will be assigned to this completion until all interests have been consolidated or a non-standard unit has been approved by the division.



District I
1625 N. French Dr., Hobbs, NM 88240
Phone: (575) 393-6161 Fax: (575) 393-0720
District II
811 S. First St., Artesia, NM 88210
Phone: (575) 748-1283 Fax: (575) 748-9720
District III
1000 Rio Brazos Road, Aztec, NM 87410
Phone: (505) 334-6178 Fax: (505) 334-6170
District IV
1220 S. St. Francis Dr., Santa Fe, NM 87505
Phone: (505) 476-3460 Fax: (505) 476-3462

State of New Mexico
Energy, Minerals & Natural Resources
Department
OIL CONSERVATION DIVISION
1220 South St. Francis Dr.
Santa Fe, NM 87505

FORM C-102

Revised August 1, 2011

Submit one copy to appropriate

District Office

☐ AMENDED REPORT

WELL LOCATION AND ACREAGE DEDICATION PLAT

| | | | |
|--|---|------------------------|--|
| ¹ API Number 30-025-45797 | | ² Pool Code | ³ Pool Name |
| ⁴ Property Code | ⁵ Property Name WILD WEASEL 22 FED COM | | ⁶ Well Number #702H |
| ⁷ OGRID No. 7377 | ⁸ Operator Name EOG RESOURCES, INC. | | ⁹ Elevation 3338' |

¹⁰Surface Location

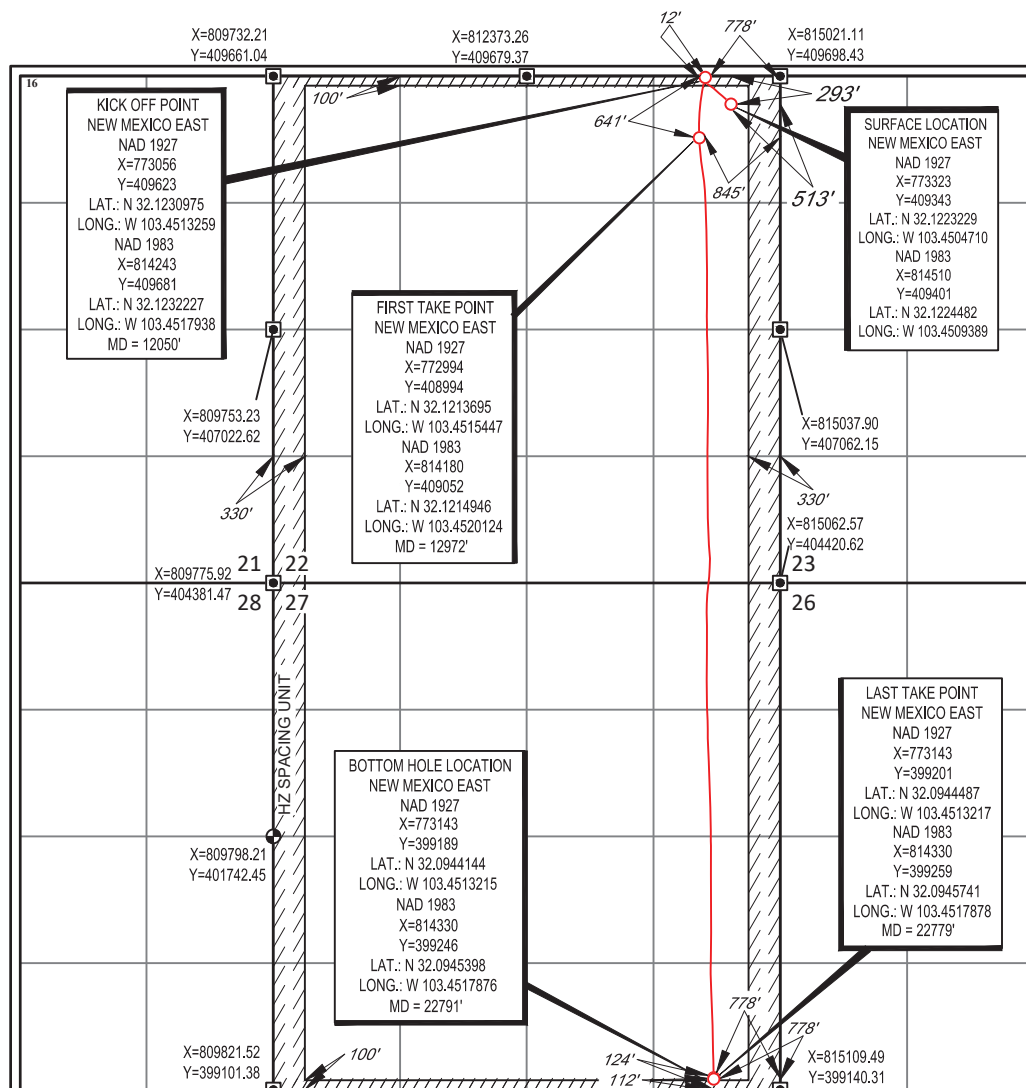
| UL or lot no. | Section | Township | Range | Lot Idn | Feet from the | North/South line | Feet from the | East/West line | County |
|---------------|-----------|-------------|-------------|----------|---------------|------------------|---------------|----------------|------------|
| A | 22 | 25-S | 34-E | - | 293' | NORTH | 513' | EAST | LEA |

¹¹Bottom Hole Location If Different From Surface

| UL or lot no. | Section | Township | Range | Lot Idn | Feet from the | North/South line | Feet from the | East/West line | County |
|---------------|-----------|-------------|-------------|----------|---------------|------------------|---------------|----------------|------------|
| P | 27 | 25-S | 34-E | - | 112' | SOUTH | 778' | EAST | LEA |

| | | | |
|---|-------------------------------|----------------------------------|-------------------------|
| ¹² Dedicated Acres 1280.00 | ¹³ Joint or Infill | ¹⁴ Consolidation Code | ¹⁵ Order No. |
|---|-------------------------------|----------------------------------|-------------------------|

No allowable will be assigned to this completion until all interests have been consolidated or a non-standard unit has been approved by the division.

¹⁷OPERATOR CERTIFICATION

I hereby certify that the information contained herein is true and complete to the best of my knowledge and belief, and that this organization either owns a working interest or unleased mineral interest in the land including the proposed bottom hole location or has a right to drill this well at this location pursuant to a contract with an owner of such a mineral or working interest, or to a voluntary pooling agreement or a compulsory pooling order heretofore entered by the division.

Signature _____ Date _____

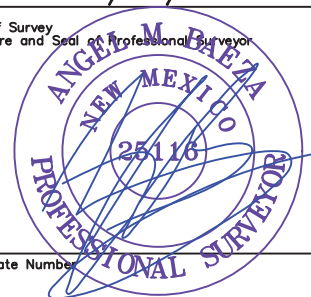
Printed Name _____

E-mail Address _____

¹⁸SURVEYOR CERTIFICATION

I hereby certify that the well location shown on this plat was plotted from field notes of actual surveys made by me or under my supervision, and that the same is true to the best of my belief.

06/08/2018

Date of Survey
Signature and Seal of Professional Surveyor

Certificate Number _____

District I
1625 N. French Dr., Hobbs, NM 88240
Phone: (575) 393-6161 Fax: (575) 393-0720
District II
811 S. First St., Artesia, NM 88210
Phone: (575) 748-1283 Fax: (575) 748-9720
District III
1000 Rio Brazos Road, Aztec, NM 87410
Phone: (505) 334-6178 Fax: (505) 334-6170
District IV
1220 S. St. Francis Dr., Santa Fe, NM 87505
Phone: (505) 476-3460 Fax: (505) 476-3462

State of New Mexico
Energy, Minerals & Natural Resources
Department
OIL CONSERVATION DIVISION
1220 South St. Francis Dr.
Santa Fe, NM 87505

FORM C-102

Revised August 1, 2011

Submit one copy to appropriate

District Office

☐ AMENDED REPORT

WELL LOCATION AND ACREAGE DEDICATION PLAT

| | | | |
|--|---|------------------------|--|
| ¹ API Number 30-025-45798 | | ² Pool Code | ³ Pool Name |
| ⁴ Property Code | ⁵ Property Name WILD WEASEL 22 FED COM | | ⁶ Well Number #704H |
| ⁷ OGRID No. 7377 | ⁸ Operator Name EOG RESOURCES, INC. | | ⁹ Elevation 3339' |

¹⁰Surface Location

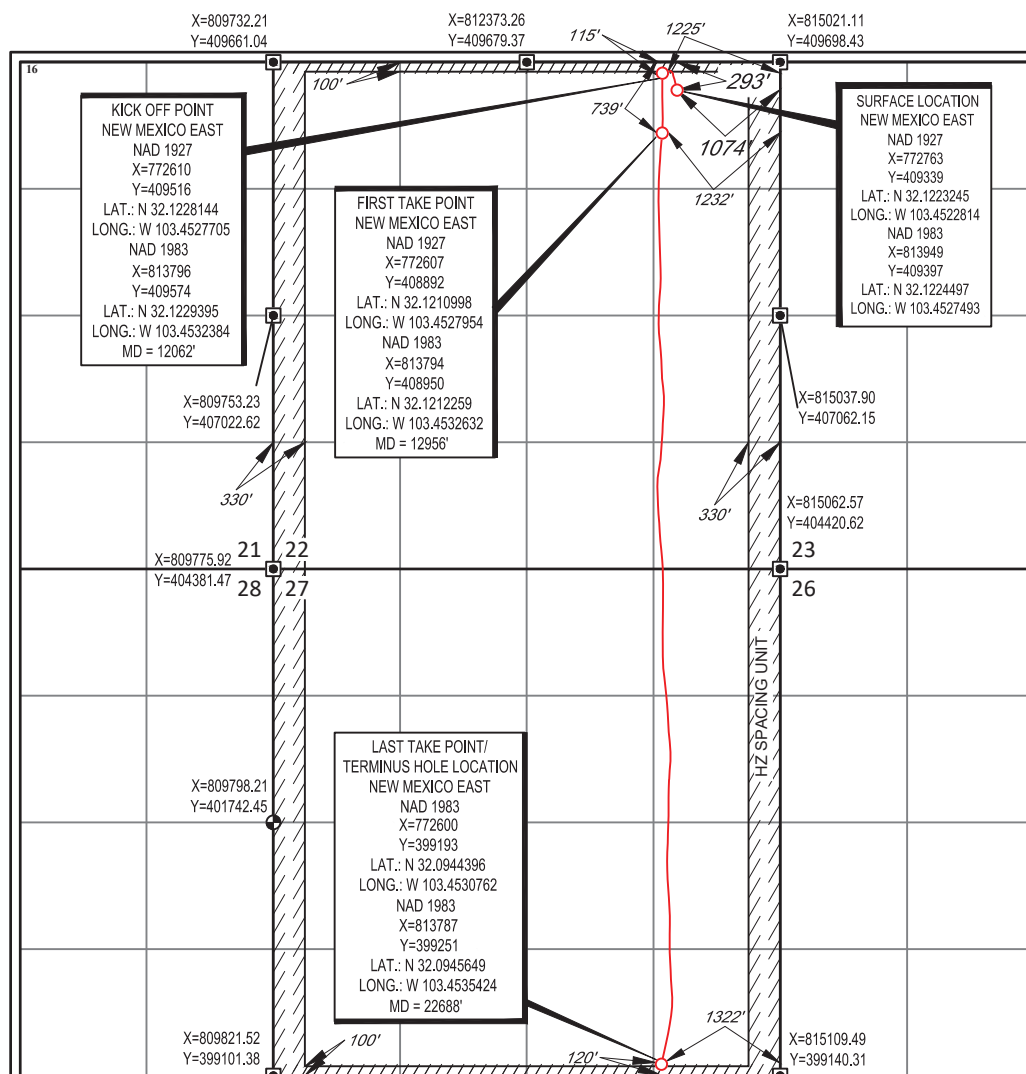
| UL or lot no. | Section | Township | Range | Lot Idn | Feet from the | North/South line | Feet from the | East/West line | County |
|---------------|-----------|-------------|-------------|----------|---------------|------------------|---------------|----------------|------------|
| A | 22 | 25-S | 34-E | - | 293' | NORTH | 1074' | EAST | LEA |

¹¹Bottom Hole Location If Different From Surface

| UL or lot no. | Section | Township | Range | Lot Idn | Feet from the | North/South line | Feet from the | East/West line | County |
|---------------|-----------|-------------|-------------|----------|---------------|------------------|---------------|----------------|------------|
| P | 27 | 25-S | 34-E | - | 120' | SOUTH | 1322' | EAST | LEA |

| | | | |
|---|-------------------------------|----------------------------------|-------------------------|
| ¹² Dedicated Acres 1280.00 | ¹³ Joint or Infill | ¹⁴ Consolidation Code | ¹⁵ Order No. |
|---|-------------------------------|----------------------------------|-------------------------|

No allowable will be assigned to this completion until all interests have been consolidated or a non-standard unit has been approved by the division.

¹⁷OPERATOR CERTIFICATION

I hereby certify that the information contained herein is true and complete to the best of my knowledge and belief, and that this organization either owns a working interest or unleased mineral interest in the land including the proposed bottom hole location or has a right to drill this well at this location pursuant to a contract with an owner of such a mineral or working interest, or to a voluntary pooling agreement or a compulsory pooling order heretofore entered by the division.

Signature _____ Date _____

Printed Name _____

E-mail Address _____

¹⁸SURVEYOR CERTIFICATION

I hereby certify that the well location shown on this plat was plotted from field notes of actual surveys made by me or under my supervision, and that the same is true to the best of my belief.

06/08/2018

Date of Survey _____
Signature and Seal of Professional Surveyor

ANGEL M. DIAZ
NEW MEXICO
PROFESSIONAL SURVEYOR
28118
Certificate Number _____

District I
1625 N. French Dr., Hobbs, NM 88240
Phone: (575) 393-6161 Fax: (575) 393-0720
District II
811 S. First St., Artesia, NM 88210
Phone: (575) 748-1283 Fax: (575) 748-9720
District III
1000 Rio Brazos Road, Aztec, NM 87410
Phone: (505) 334-6178 Fax: (505) 334-6170
District IV
1220 S. St. Francis Dr., Santa Fe, NM 87505
Phone: (505) 476-3460 Fax: (505) 476-3462

State of New Mexico
Energy, Minerals & Natural Resources
Department
OIL CONSERVATION DIVISION
1220 South St. Francis Dr.
Santa Fe, NM 87505

FORM C-102

Revised August 1, 2011

Submit one copy to appropriate

District Office

☐ AMENDED REPORT

WELL LOCATION AND ACREAGE DEDICATION PLAT

| | | | |
|--|---|------------------------|--|
| ¹ API Number 30-025-45799 | | ² Pool Code | ³ Pool Name |
| ⁴ Property Code | ⁵ Property Name WILD WEASEL 22 FED COM | | ⁶ Well Number #705H |
| ⁷ OGRID No. 7377 | ⁸ Operator Name EOG RESOURCES, INC. | | ⁹ Elevation 3339' |

¹⁰Surface Location

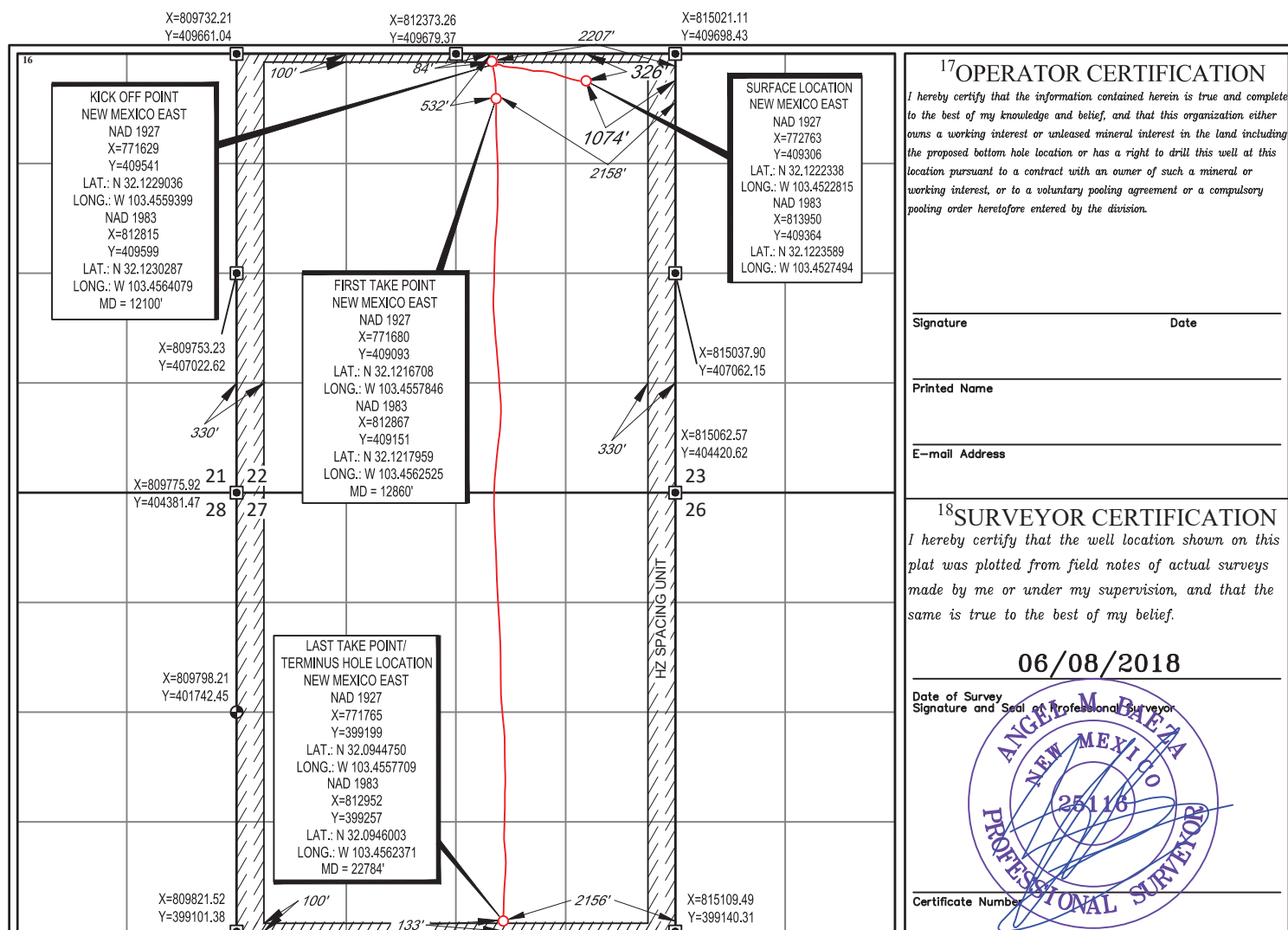
| UL or lot no. | Section | Township | Range | Lot Idn | Feet from the | North/South line | Feet from the | East/West line | County |
|---------------|-----------|-------------|-------------|----------|---------------|------------------|---------------|----------------|------------|
| A | 22 | 25-S | 34-E | - | 326' | NORTH | 1074' | EAST | LEA |

¹¹Bottom Hole Location If Different From Surface

| UL or lot no. | Section | Township | Range | Lot Idn | Feet from the | North/South line | Feet from the | East/West line | County |
|---------------|-----------|-------------|-------------|----------|---------------|------------------|---------------|----------------|------------|
| 0 | 27 | 25-S | 34-E | - | 133' | SOUTH | 2156' | EAST | LEA |

| | | | |
|---|-------------------------------|----------------------------------|-------------------------|
| ¹² Dedicated Acres 1280.00 | ¹³ Joint or Infill | ¹⁴ Consolidation Code | ¹⁵ Order No. |
|---|-------------------------------|----------------------------------|-------------------------|

No allowable will be assigned to this completion until all interests have been consolidated or a non-standard unit has been approved by the division.



District I
1625 N. French Dr., Hobbs, NM 88240
Phone: (575) 393-6161 Fax: (575) 393-0720
District II
811 S. First St., Artesia, NM 88210
Phone: (575) 748-1283 Fax: (575) 748-9720
District III
1000 Rio Brazos Road, Aztec, NM 87410
Phone: (505) 334-6178 Fax: (505) 334-6170
District IV
1220 S. St. Francis Dr., Santa Fe, NM 87505
Phone: (505) 476-3460 Fax: (505) 476-3462

State of New Mexico
Energy, Minerals & Natural Resources
Department
OIL CONSERVATION DIVISION
1220 South St. Francis Dr.
Santa Fe, NM 87505

FORM C-102

Revised August 1, 2011

Submit one copy to appropriate

District Office

☐ AMENDED REPORT

WELL LOCATION AND ACREAGE DEDICATION PLAT

| | | | |
|--|---|------------------------|---|
| ¹ API Number 30-025-45802 | | ² Pool Code | ³ Pool Name |
| ⁴ Property Code | ⁵ Property Name WILD WEASEL 22 FED COM | | ⁶ Well Number 708H |
| ⁷ OGRID No. 7377 | ⁸ Operator Name EOG RESOURCES, INC. | | ⁹ Elevation 3354' |

¹⁰Surface Location

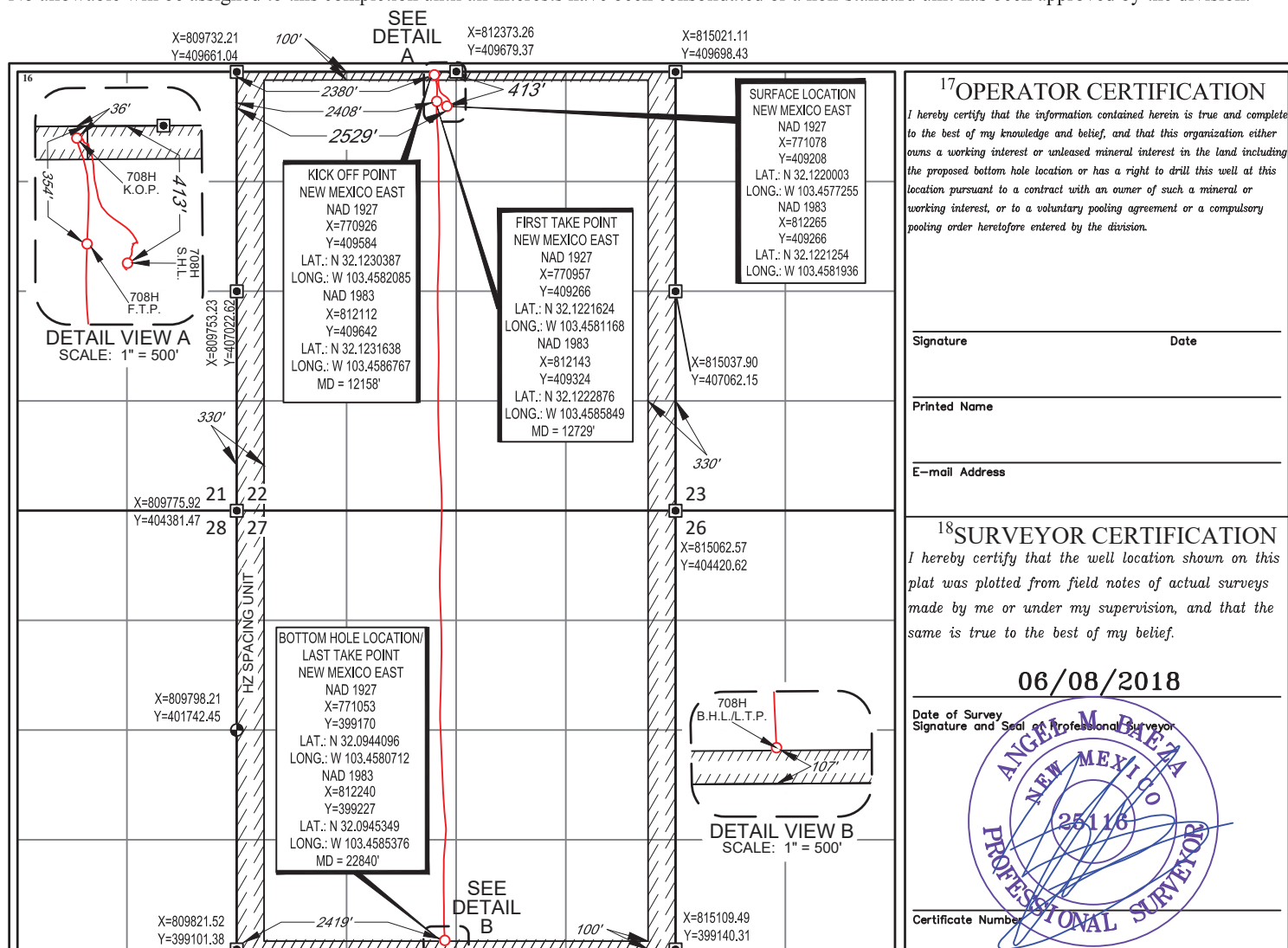
| UL or lot no. | Section | Township | Range | Lot Idn | Feet from the | North/South line | Feet from the | East/West line | County |
|---------------|-----------|-------------|-------------|----------|---------------|------------------|---------------|----------------|------------|
| C | 22 | 25-S | 34-E | - | 413' | NORTH | 2529' | WEST | LEA |

¹¹Bottom Hole Location If Different From Surface

| UL or lot no. | Section | Township | Range | Lot Idn | Feet from the | North/South line | Feet from the | East/West line | County |
|---------------|-----------|-------------|-------------|----------|---------------|------------------|---------------|----------------|------------|
| N | 27 | 25-S | 34-E | - | 107' | SOUTH | 2419' | WEST | LEA |

| | | | |
|---|-------------------------------|----------------------------------|-------------------------|
| ¹² Dedicated Acres 1280.00 | ¹³ Joint or Infill | ¹⁴ Consolidation Code | ¹⁵ Order No. |
|---|-------------------------------|----------------------------------|-------------------------|

No allowable will be assigned to this completion until all interests have been consolidated or a non-standard unit has been approved by the division.



District I
1625 N. French Dr., Hobbs, NM 88240
Phone: (575) 393-6161 Fax: (575) 393-0720
District II
811 S. First St., Artesia, NM 88210
Phone: (575) 748-1283 Fax: (575) 748-9720
District III
1000 Rio Brazos Road, Aztec, NM 87410
Phone: (505) 334-6178 Fax: (505) 334-6170
District IV
1220 S. St. Francis Dr., Santa Fe, NM 87505
Phone: (505) 476-3460 Fax: (505) 476-3462

State of New Mexico
Energy, Minerals & Natural Resources
Department
OIL CONSERVATION DIVISION
1220 South St. Francis Dr.
Santa Fe, NM 87505

FORM C-102

Revised August 1, 2011

Submit one copy to appropriate

District Office

☐ AMENDED REPORT

WELL LOCATION AND ACREAGE DEDICATION PLAT

| | | |
|--|---|--|
| ¹ API Number 30-025-45803 | ² Pool Code | ³ Pool Name |
| ⁴ Property Code | ⁵ Property Name WILD WEASEL 22 FED COM | ⁶ Well Number #709H |
| ⁷ OGRID No. 7377 | ⁸ Operator Name EOG RESOURCES, INC. | ⁹ Elevation 3353' |

¹⁰Surface Location

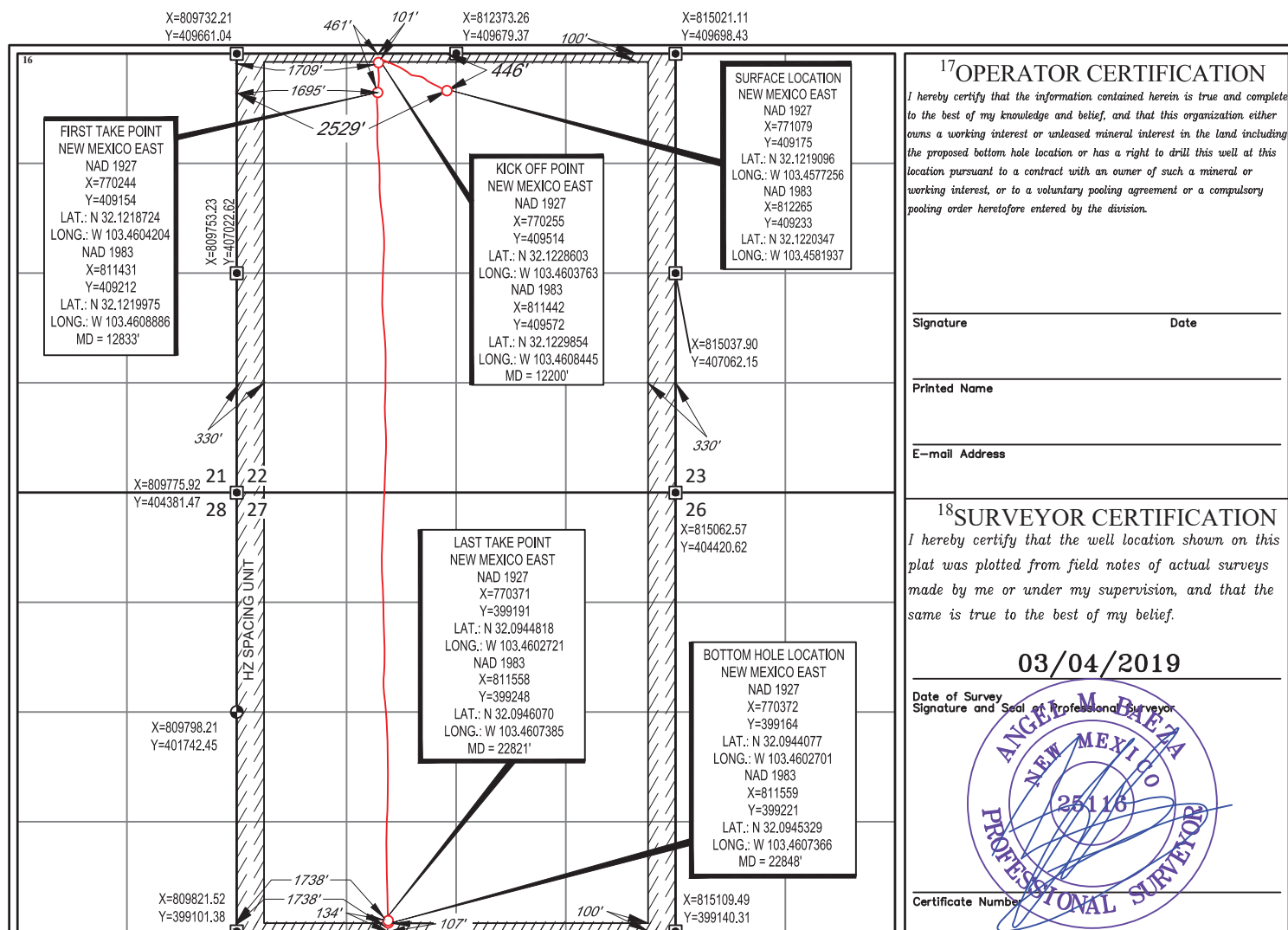
| UL or lot no. | Section | Township | Range | Lot Idn | Feet from the | North/South line | Feet from the | East/West line | County |
|---------------|-----------|-------------|-------------|----------|---------------|------------------|---------------|----------------|------------|
| C | 22 | 25-S | 34-E | - | 446' | NORTH | 2529' | WEST | LEA |

¹¹Bottom Hole Location If Different From Surface

| UL or lot no. | Section | Township | Range | Lot Idn | Feet from the | North/South line | Feet from the | East/West line | County |
|---------------|-----------|-------------|-------------|----------|---------------|------------------|---------------|----------------|------------|
| N | 27 | 25-S | 34-E | - | 107' | SOUTH | 1738' | WEST | LEA |

| | | | |
|---|-------------------------------|----------------------------------|-------------------------|
| ¹² Dedicated Acres 1280.00 | ¹³ Joint or Infill | ¹⁴ Consolidation Code | ¹⁵ Order No. |
|---|-------------------------------|----------------------------------|-------------------------|

No allowable will be assigned to this completion until all interests have been consolidated or a non-standard unit has been approved by the division.



District I
1625 N. French Dr., Hobbs, NM 88240
Phone: (575) 393-6161 Fax: (575) 393-0720
District II
811 S. First St., Artesia, NM 88210
Phone: (575) 748-1283 Fax: (575) 748-9720
District III
1000 Rio Brazos Road, Aztec, NM 87410
Phone: (505) 334-6178 Fax: (505) 334-6170
District IV
1220 S. St. Francis Dr., Santa Fe, NM 87505
Phone: (505) 476-3460 Fax: (505) 476-3462

State of New Mexico
Energy, Minerals & Natural Resources
Department
OIL CONSERVATION DIVISION
1220 South St. Francis Dr.
Santa Fe, NM 87505

FORM C-102

Revised August 1, 2011

Submit one copy to appropriate

District Office

☐ AMENDED REPORT

WELL LOCATION AND ACREAGE DEDICATION PLAT

| | | | |
|--|---|------------------------|--|
| ¹ API Number 30-025-46138 | | ² Pool Code | ³ Pool Name |
| ⁴ Property Code | ⁵ Property Name WILD WEASEL 22 FED COM | | ⁶ Well Number #711H |
| ⁷ OGRID No. 7377 | ⁸ Operator Name EOG RESOURCES, INC. | | ⁹ Elevation 3345' |

¹⁰Surface Location

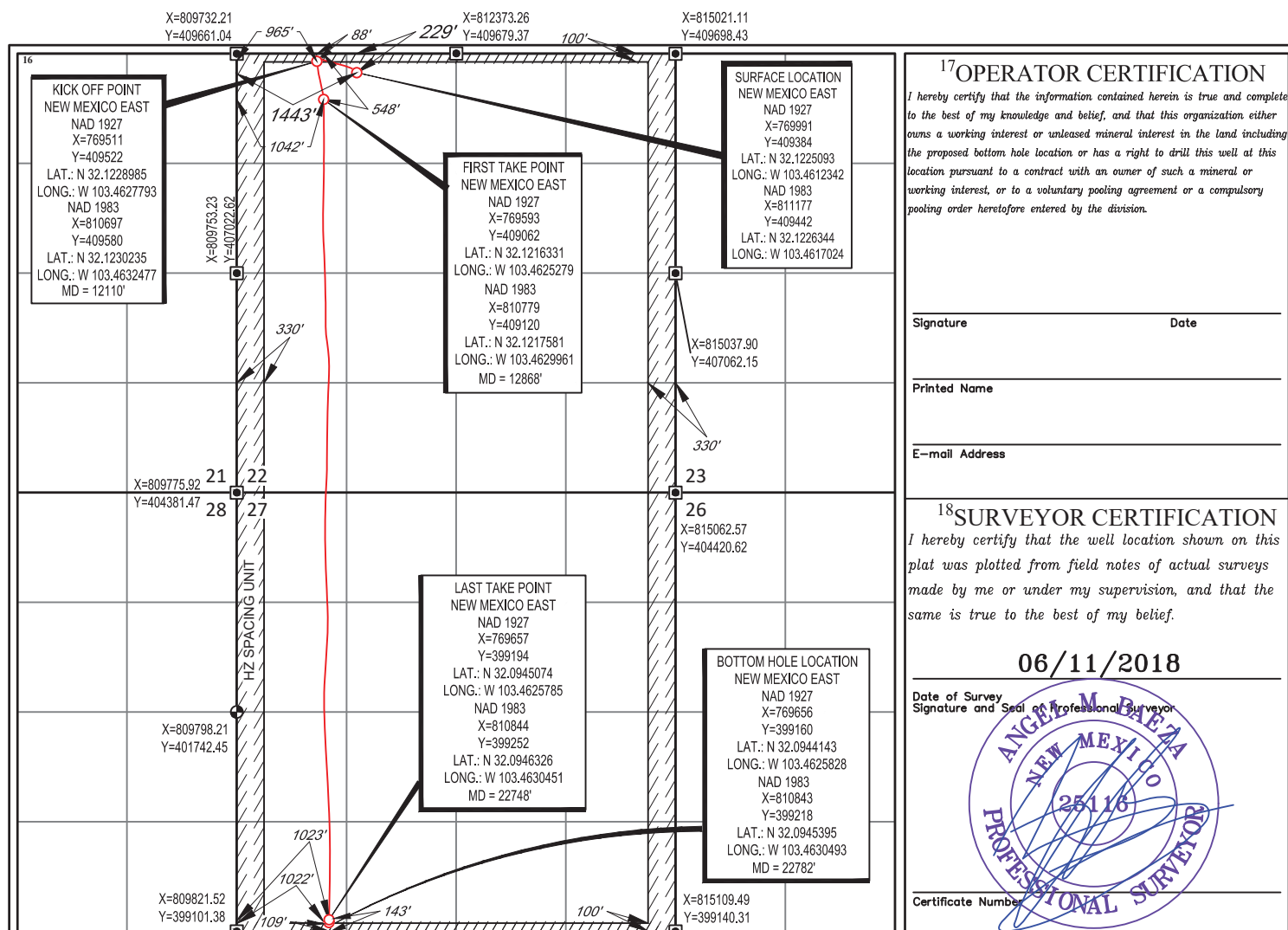
| UL or lot no. | Section | Township | Range | Lot Idn | Feet from the | North/South line | Feet from the | East/West line | County |
|---------------|-----------|-------------|-------------|----------|---------------|------------------|---------------|----------------|------------|
| C | 22 | 25-S | 34-E | - | 229' | NORTH | 1443' | WEST | LEA |

¹¹Bottom Hole Location If Different From Surface

| UL or lot no. | Section | Township | Range | Lot Idn | Feet from the | North/South line | Feet from the | East/West line | County |
|---------------|-----------|-------------|-------------|----------|---------------|------------------|---------------|----------------|------------|
| M | 27 | 25-S | 34-E | - | 109' | SOUTH | 1022' | WEST | LEA |

| | | | |
|---|-------------------------------|----------------------------------|-------------------------|
| ¹² Dedicated Acres 1280.00 | ¹³ Joint or Infill | ¹⁴ Consolidation Code | ¹⁵ Order No. |
|---|-------------------------------|----------------------------------|-------------------------|

No allowable will be assigned to this completion until all interests have been consolidated or a non-standard unit has been approved by the division.



District I
1625 N. French Dr., Hobbs, NM 88240
Phone: (575) 393-6161 Fax: (575) 393-0720
District II
811 S. First St., Artesia, NM 88210
Phone: (575) 748-1283 Fax: (575) 748-9720
District III
1000 Rio Brazos Road, Aztec, NM 87410
Phone: (505) 334-6178 Fax: (505) 334-6170
District IV
1220 S. St. Francis Dr., Santa Fe, NM 87505
Phone: (505) 476-3460 Fax: (505) 476-3462

State of New Mexico
Energy, Minerals & Natural Resources
Department
OIL CONSERVATION DIVISION
1220 South St. Francis Dr.
Santa Fe, NM 87505

FORM C-102

Revised August 1, 2011

Submit one copy to appropriate

District Office

☐ AMENDED REPORT

WELL LOCATION AND ACREAGE DEDICATION PLAT

| | | | |
|--|---|------------------------|--|
| ¹ API Number 30-025-45805 | | ² Pool Code | ³ Pool Name |
| ⁴ Property Code | ⁵ Property Name WILD WEASEL 22 FED COM | | ⁶ Well Number #712H |
| ⁷ OGRID No. 7377 | ⁸ Operator Name EOG RESOURCES, INC. | | ⁹ Elevation 3343' |

¹⁰Surface Location

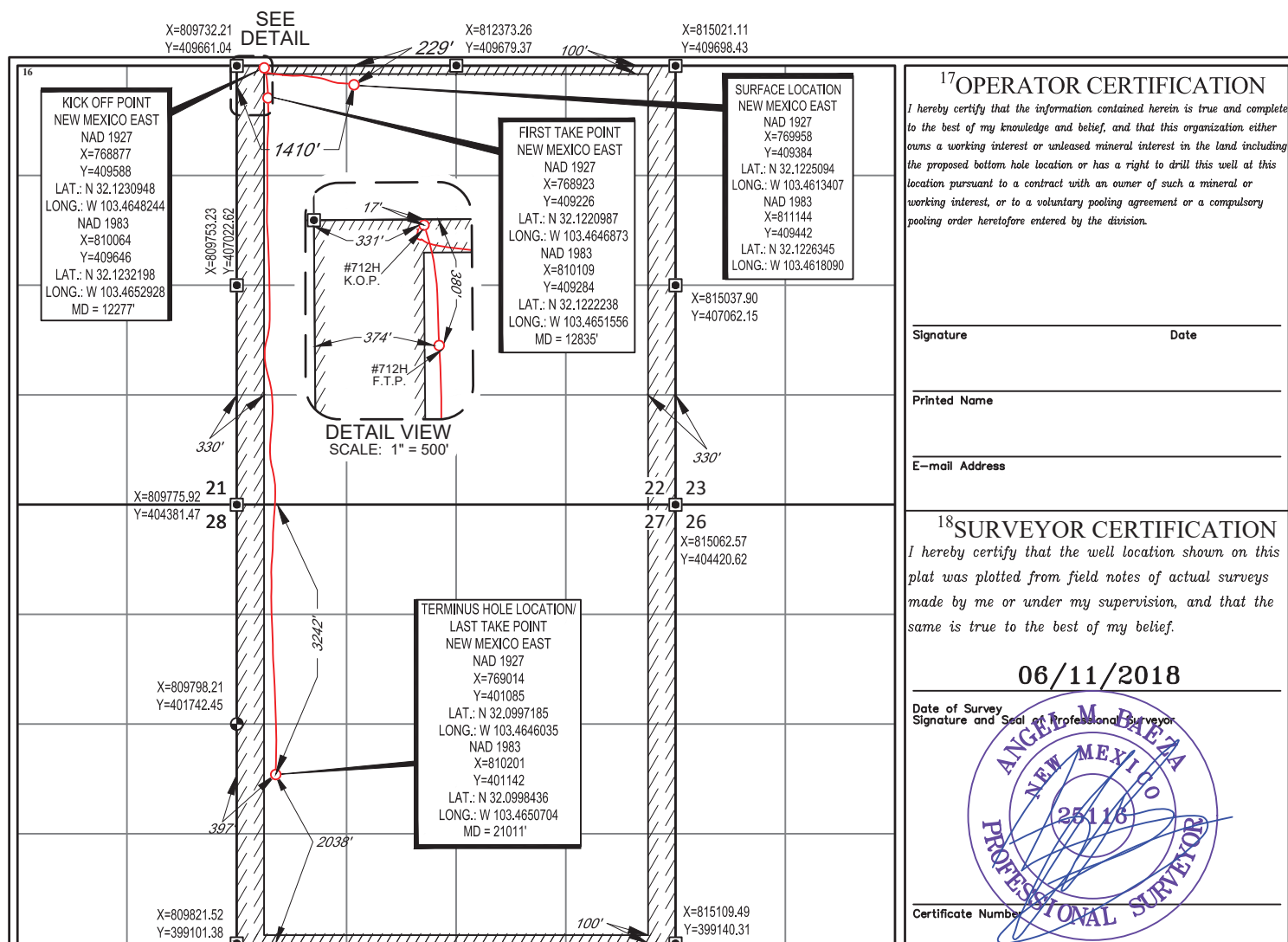
| UL or lot no. | Section | Township | Range | Lot Idn | Feet from the | North/South line | Feet from the | East/West line | County |
|---------------|-----------|-------------|-------------|----------|---------------|------------------|---------------|----------------|------------|
| C | 22 | 25-S | 34-E | - | 229' | NORTH | 1410' | WEST | LEA |

¹¹Bottom Hole Location If Different From Surface

| UL or lot no. | Section | Township | Range | Lot Idn | Feet from the | North/South line | Feet from the | East/West line | County |
|---------------|-----------|-------------|-------------|----------|---------------|------------------|---------------|----------------|------------|
| L | 27 | 25-S | 34-E | - | 2038' | SOUTH | 397' | WEST | LEA |

| | | | |
|---|-------------------------------|----------------------------------|-------------------------|
| ¹² Dedicated Acres 1280.00 | ¹³ Joint or Infill | ¹⁴ Consolidation Code | ¹⁵ Order No. |
|---|-------------------------------|----------------------------------|-------------------------|

No allowable will be assigned to this completion until all interests have been consolidated or a non-standard unit has been approved by the division.



Proposed Non-Standard Horizontal Spacing Unit: Wolfcamp Formation

Wild Weasel 22 Fed Com: All of Sections 22 and 27-25S-34E

Notice Tracts

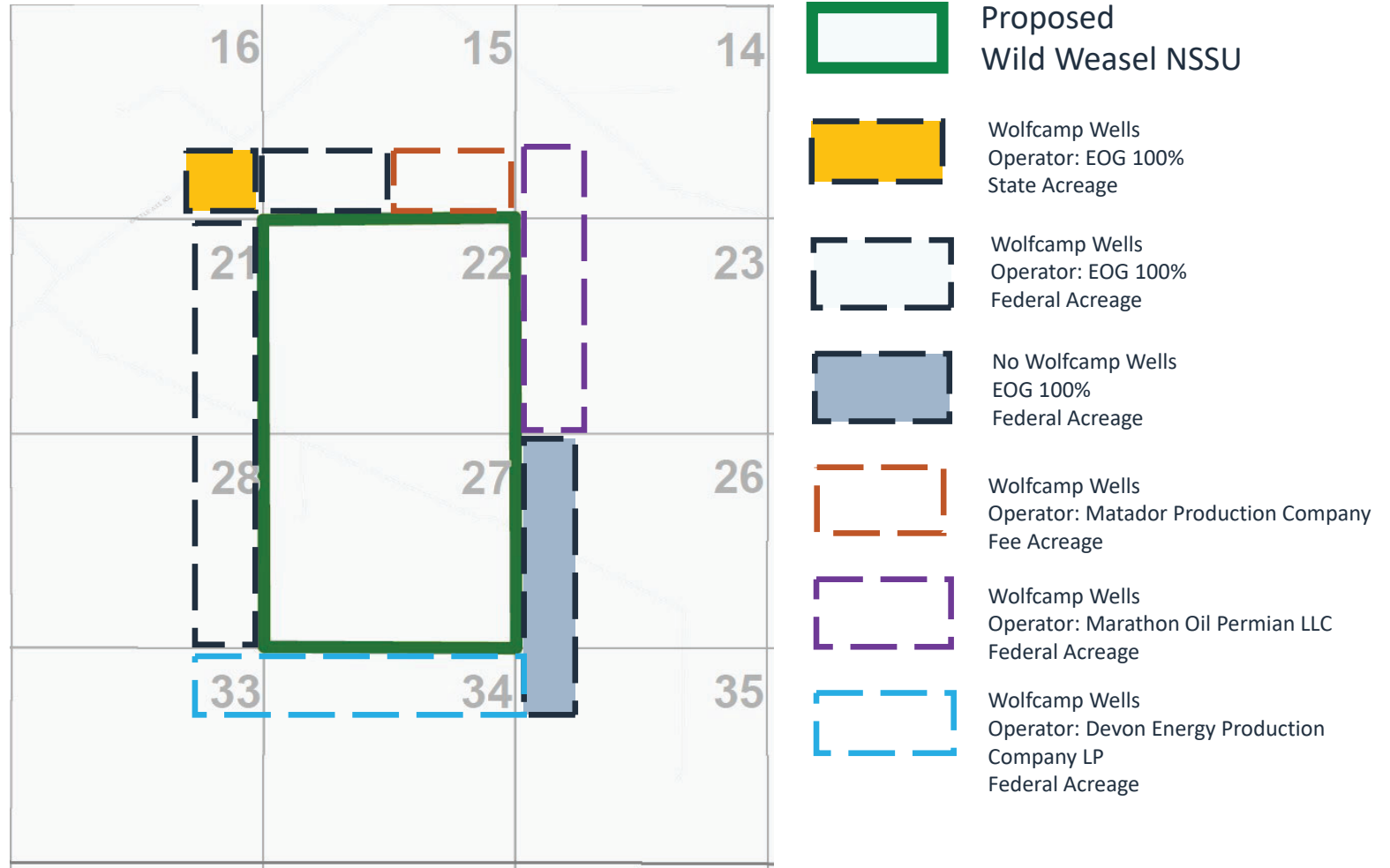


Exhibit B

Top of Wolfcamp Structure TVDSS (100' C.I.)

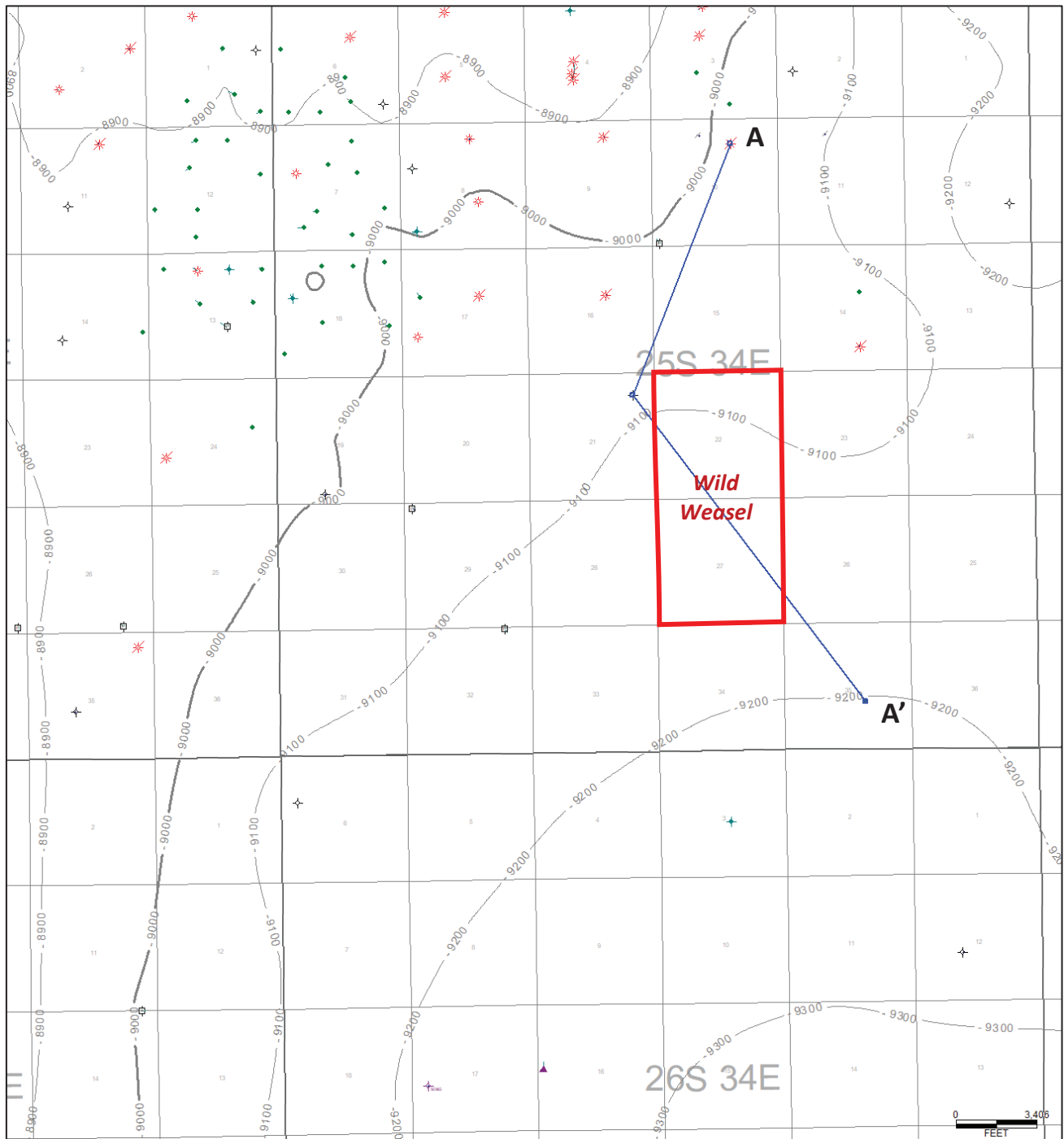


Exhibit D

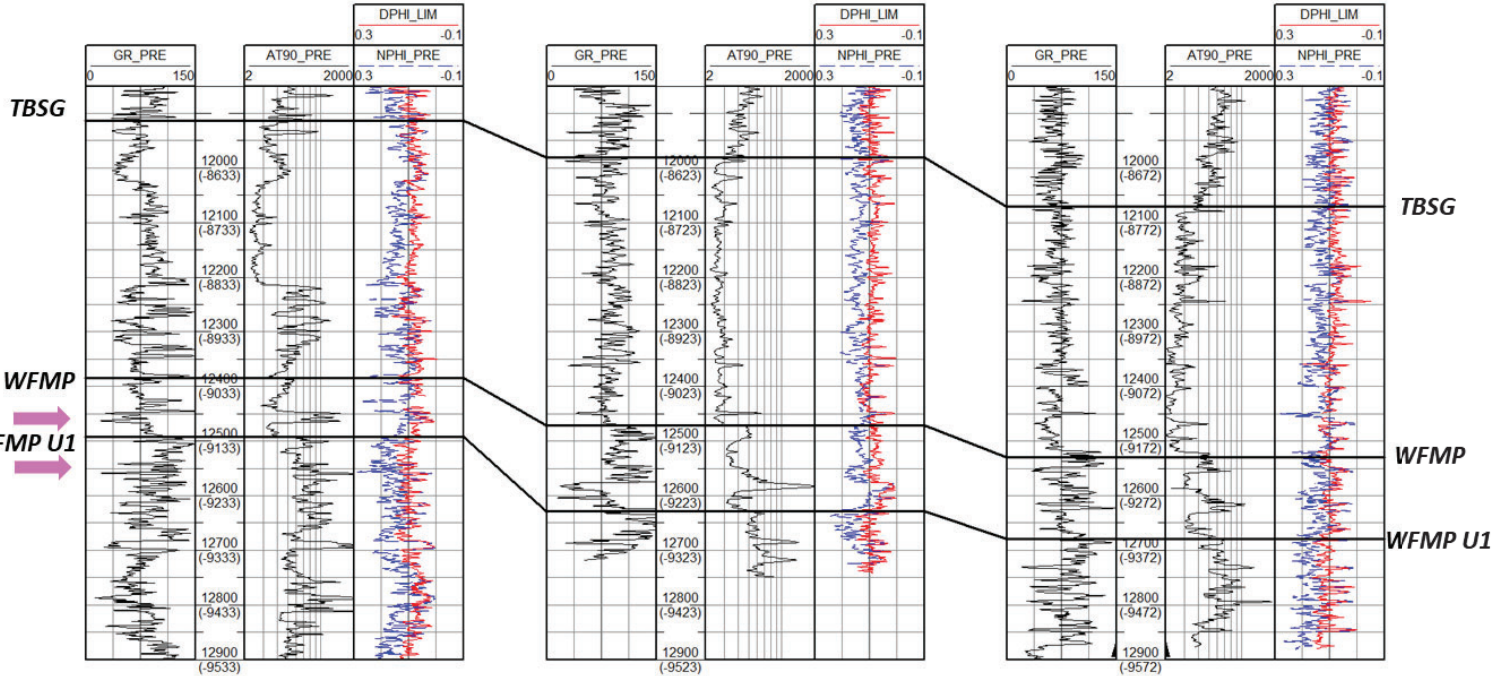
A (N)

A' (S)

30025291270000
CHAPARRAL '10' #1

30025342780000
JAVELINA '21' FEDERAL #2

30025277530000
PITCHBLEND FEDERAL UNIT #2



➡ Landing Zones

Financial & Environmental Impact

| Scenario | Design Basis Per CTB [BOPD] | CTB Cost [\$M] | Pipeline/Utilities Costs [\$M] | Total Capital [\$M] | CTB Disturbance [Acres] |
|---------------------------|--------------------------------|-------------------|-----------------------------------|------------------------|----------------------------|
| Standard Spacing Unit | 50,000 | \$4,800 | \$3,284 | \$8,084 | 45 |
| Non-Standard Spacing Unit | 50,000 | \$2,400 | \$2,412 | \$4,812 | 35 |
| Savings | - | \$2,400 | \$872 | \$3,272 | 10 |

Consolidating all production into a single facility under the Non-Standard Spacing Unit scenario will reduce permitted fugitive VOC emissions by 50%.

Exhibit E

Non-Standard Spacing Unit Infrastructure Plan



Notice List for Wild Weasel Non Standard Spacing Unit

EOG Resources, Inc.
Notice List

Application Notice:

New Mexico Oil Conservation Division
Attn: Mr. Dean McClure
1220 South St. Francis Drive
Santa Fe, NM 87505
Notification via NMOCD

Royalty Owners:

Bureau of Land Management
Attn: Mr. Jonathon Shepard
620 E. Green Street
Carlsbad, NM 88220
7022 2410 0001 5582 4108

New Mexico State Land Office
Attn: Scott Dawson
310 Old Santa Fe Trail
Santa Fe, NM 87501
7022 2410 0001 5582 4115

Working Interest Owners:

EOG Resources
5509 Champions Dr
Midland, TX 79706

Offset Owners:

Matador Production Company
5400 LBJ Freeway, Suite 1500
Dallas, TX 75240
7022 2410 0001 5582 4122

Marathon Oil Permian LLC
5555 San Felipe Street
Houston, TX 77056
7022 2410 0001 5582 4139

Devon Energy Production
333 West Sheridan Ave.
Oklahoma City, OK 73102
7022 2410 0001 5582 4146



Lisa Youngblood
Phone: (432) 247-6331
Email: lisa_youngblood@eogresources.com

June 28, 2023

VIA CERTIFIED MAIL

TO: ALL AFFECTED PERSONS

Re: Application of EOG Resources, Inc. for administrative approval of a 1280-acre non-standard horizontal spacing unit in the Pitchfork Ranch; Wolfcamp, South Pool (96994) comprised of Sections 22 and Section 27, Township 25 South, Range 34 East, NMPM, Lea County, New Mexico.

Ladies and Gentlemen:

Enclosed is a copy of the above-referenced application which was filed with the New Mexico Oil Conservation Division on this date. Any objection to this application must be filed in writing within twenty days from this date with the applicant and the New Mexico Oil Conservation Division, 1220 South St. Francis Drive, Santa Fe, New Mexico, 87505. If no objection is received within this twenty-day period, this application may be approved administratively by the Division.

If you have any questions about this application, please contact the following:

Laci Stretcher
EOG Resources, Inc.
(432) 247-6362
Laci_stretcher@eogresources.com

Very truly yours,

A handwritten signature in black ink that reads "Lisa Youngblood".

Lisa Youngblood
Regulatory Specailist

District I
1625 N. French Dr., Hobbs, NM 88240
Phone:(575) 393-6161 Fax:(575) 393-0720
District II
811 S. First St., Artesia, NM 88210
Phone:(575) 748-1283 Fax:(575) 748-9720
District III
1000 Rio Brazos Rd., Aztec, NM 87410
Phone:(505) 334-6178 Fax:(505) 334-6170
District IV
1220 S. St Francis Dr., Santa Fe, NM 87505
Phone:(505) 476-3470 Fax:(505) 476-3462

State of New Mexico
Energy, Minerals and Natural Resources
Oil Conservation Division
1220 S. St Francis Dr.
Santa Fe, NM 87505

CONDITIONS

Action 233641

CONDITIONS

| | |
|--|---|
| Operator: EOG RESOURCES INC P.O. Box 2267 Midland, TX 79702 | OGRID: 7377 |
| | Action Number: 233641 |
| | Action Type: [UF-NSP] Non-Standard Proration (NSP) |

CONDITIONS

| | | |
|------------|-----------|----------------|
| Created By | Condition | Condition Date |
| llowe | None | 6/28/2023 |