

ID NO. 263465

NSP - 2174

Revised March 23, 2017

RECEIVED:	REVIEWER:	TYPE:	APP NO: <b>pLEL2325464123</b>
-----------	-----------	-------	-------------------------------

ABOVE THIS TABLE FOR OCD DIVISION USE ONLY

**NEW MEXICO OIL CONSERVATION DIVISION**  
 - Geological & Engineering Bureau -  
 1220 South St. Francis Drive, Santa Fe, NM 87505

**ADMINISTRATIVE APPLICATION CHECKLIST**

THIS CHECKLIST IS MANDATORY FOR ALL ADMINISTRATIVE APPLICATIONS FOR EXCEPTIONS TO DIVISION RULES AND REGULATIONS WHICH REQUIRE PROCESSING AT THE DIVISION LEVEL IN SANTA FE

**Applicant:** Mewbourne Oil Company **OGRID Number:** 14744  
**Well Name:** Penny 34/36 Fed Com #711H, Penny 34/36 Fed Com #713H, Penny 34/36 Fed Com #716H, & Penny 34/36 Fed Com #718H **API:** \_\_\_\_\_  
**Pool:** Purple Sage-Wolfcamp (Gas) **Pool Code:** 98220

**SUBMIT ACCURATE AND COMPLETE INFORMATION REQUIRED TO PROCESS THE TYPE OF APPLICATION INDICATED BELOW**

1) **TYPE OF APPLICATION:** Check those which apply for [A]

A. Location – Spacing Unit – Simultaneous Dedication

☐ NSL☐ NSP (PROJECT AREA)☒ NSP (PRORATION UNIT)☐ SD

B. Check one only for [ I ] or [ II ]

[ I ] Commingling – Storage – Measurement

☐ DHC☐ CTB☐ PLC☐ PC☐ OLS☐ OLM

[ II ] Injection – Disposal – Pressure Increase – Enhanced Oil Recovery

☐ WFX☐ PMX☐ SWD☐ IPI☐ EOR☐ PPR2) **NOTIFICATION REQUIRED TO:** Check those which apply.A. ☒ Offset operators or lease holdersB. ☐ Royalty, overriding royalty owners, revenue ownersC. ☐ Application requires published noticeD. ☒ Notification and/or concurrent approval by SLOE. ☒ Notification and/or concurrent approval by BLMF. ☐ Surface ownerG. ☒ For all of the above, proof of notification or publication is attached, and/or,H. ☐ No notice required**FOR OCD ONLY**☐

Notice Complete

☐Application  
Content  
Complete

3) **CERTIFICATION:** I hereby certify that the information submitted with this application for administrative approval is **accurate** and **complete** to the best of my knowledge. I also understand that **no action** will be taken on this application until the required information and notifications are submitted to the Division.

**Note:** Statement must be completed by an individual with managerial and/or supervisory capacity.

Brad Dunn

Print or Type Name

Signature

September 7, 2023

Date

432-682-3715

Phone Number

bdunn@mewbourne.com

e-mail Address

**MEWBOURNE OIL COMPANY**  
500 WEST TEXAS AVENUE, SUITE 1020  
MIDLAND, TEXAS 79701-4279

TELEPHONE (432) 682-3715

September 7, 2023

Via NMOCD Online Portal

New Mexico Oil Conservation Division  
1220 S. St. Francis Drive  
Santa Fe, New Mexico 87505  
Attn: Mr. Leonard Lowe  
Engineering Bureau

Re: Application for Non-Standard Proration Unit  
**PENNY 34/36 FED COM #711H**  
Surface Location: 2647' FNL & 2249' FEL (Sec. 34)  
Proposed first take point: 330' FNL & 2310' FEL (Unit B) (Sec. 34)  
Bottomhole Location: 330' FNL & 2395' FWL (Sec. 36)  
Proposed last take point: 330' FNL & 2395' FWL (Unit C) (Sec. 36)  
**PENNY 34/36 FED COM #713H**  
Surface Location: 2677' FNL & 2249' FEL (Sec. 34)  
Proposed first take point: 1870' FNL & 2310' FEL (Unit G) (Sec. 34)  
Bottomhole Location: 1870' FNL & 2395' FWL (Sec. 36)  
Proposed last take point: 1870' FNL & 2395' FWL (Unit F) (Sec. 36)  
**PENNY 34/36 FED COM #716H**  
Surface Location: 2690' FSL & 2249' FEL (Sec. 34)  
Proposed first take point: 1870' FSL & 2310' FEL (Unit J) (Sec. 34)  
Bottomhole Location: 1870' FSL & 2395' FWL (Sec. 36)  
Proposed last take point: 1870' FSL & 2395' FWL (Unit K) (Sec. 36)  
**PENNY 34/36 FED COM #718H**  
Surface Location: 2660' FSL & 2249' FEL (Sec. 34)  
Proposed first take point: 330' FSL & 2310' FEL (Unit O) (Sec. 34)  
Bottomhole Location: 330' FSL & 2395' FWL (Sec. 36)  
Proposed last take point: 330' FSL & 2395' FWL (Unit N) (Sec. 36)

All wells located across the E2 of Section 34, Section 35, and the W2 Section 36  
Township 22 South, Range 26 East, Eddy County, New Mexico

Dear Mr. Lowe:

Pursuant to Division Rule 19.15.16.15(B)(5), Mewbourne Oil Company ("Mewbourne") respectfully requests administrative approval of a non-standard proration unit for its proposed PENNY 34/36 FED COM #711H, PENNY 34/36 FED COM #713H, PENNY 34/36 FED COM #716H, and the PENNY 34/36 FED COM #718H wells listed above. These wells will be drilled as horizontal oil wells in the Purple Sage-Wolfcamp (Gas) pool (98220).

The PENNY 34/36 FED COM #711H, PENNY 34/36 FED COM #713H, PENNY 34/36 FED COM #716H, and the PENNY 34/36 FED COM #718H wells will be dedicated to a 1280.00-acre proration unit comprising the E2 of Section 34, All of Section 35, and the W2 of Section 36, Township 22 South, Range 26 East, Eddy County, New Mexico. There are currently no other existing Wolfcamp wells producing from within the proposed spacing unit.

The affected offset acreage comprises all of Sections 25, 26, 27, the E2 of Section 28, the E2 of Section 33, the W2 of Section 34, and the E2 of Section 36 all located in T22S-R26E in addition to the E2 of Section 4, Section 1, Section 2, and Section 3 all located in T23S-R26E in addition to the W2 of Section 6 located in T23S-R27E and lastly in addition to the W2 of Section 31 and the W2 of Section 30 all located in T22S-R27E (See attached map). Consequently, notice of this application is being provided to all parties listed on the attached list of affected parties.

Mewbourne is seeking approval of this NSP to eliminate the need for separate production facilities and additional administrative approvals in addition to giving us flexibility in locating our laterals and drilling infills in other horizons. These reasons will provide for reducing waste and our surface imprint while protecting correlative rights within the referenced horizontal spacing unit. This NSP will also possibly reduce emissions by consolidating the tank battery.

Federal permits to drill these wells were applied for back in September of 2022. The permits are still pending approval by the New Mexico Bureau of Land Management, and we expect them to be approved soon. We still respectfully request the NMOCD to approve this NSP even though we don't yet have API numbers issued to us since the APDs are still pending approval from the BLM.

Notice by certified mail, return receipt requested, has been given to the affected parties listed in the notification list attached.

Thank you for your consideration of this application. Should you have any questions regarding the above, please email me at [bdunn@mewbourne.com](mailto:bdunn@mewbourne.com) or call me at (432) 682-3715.

Sincerely,

**MEWBOURNE OIL COMPANY**



Brad Dunn  
Landman

District I  
1625 N. French Dr., Hobbs, NM 88240  
Phone: (575) 393-6161 Fax: (575) 393-0720  
District II  
811 S. First St., Artesia, NM 88210  
Phone: (575) 748-1283 Fax: (575) 748-9720  
District III  
1000 Rio Brazos Road, Aztec, NM 87410  
Phone: (505) 334-6178 Fax: (505) 334-6170  
District IV  
1220 S. St. Francis Dr., Santa Fe, NM 87505  
Phone: (505) 476-3460 Fax: (505) 476-3462

State of New Mexico  
Energy, Minerals & Natural Resources Department  
OIL CONSERVATION DIVISION  
1220 South St. Francis Dr.  
Santa Fe, NM 87505

Form C-102  
Revised August 1, 2011  
Submit one copy to appropriate  
District Office  
☐ AMENDED REPORT

WELL LOCATION AND ACREAGE DEDICATION PLAT

<sup>1</sup> API Number		<sup>2</sup> Pool Code		<sup>3</sup> Pool Name	
<sup>4</sup> Property Code		<sup>5</sup> Property Name PENNY 34/36 FED COM			<sup>6</sup> Well Number 711H
<sup>7</sup> OGRID No.		<sup>8</sup> Operator Name MEWBOURNE OIL COMPANY			<sup>9</sup> Elevation 3267.4'

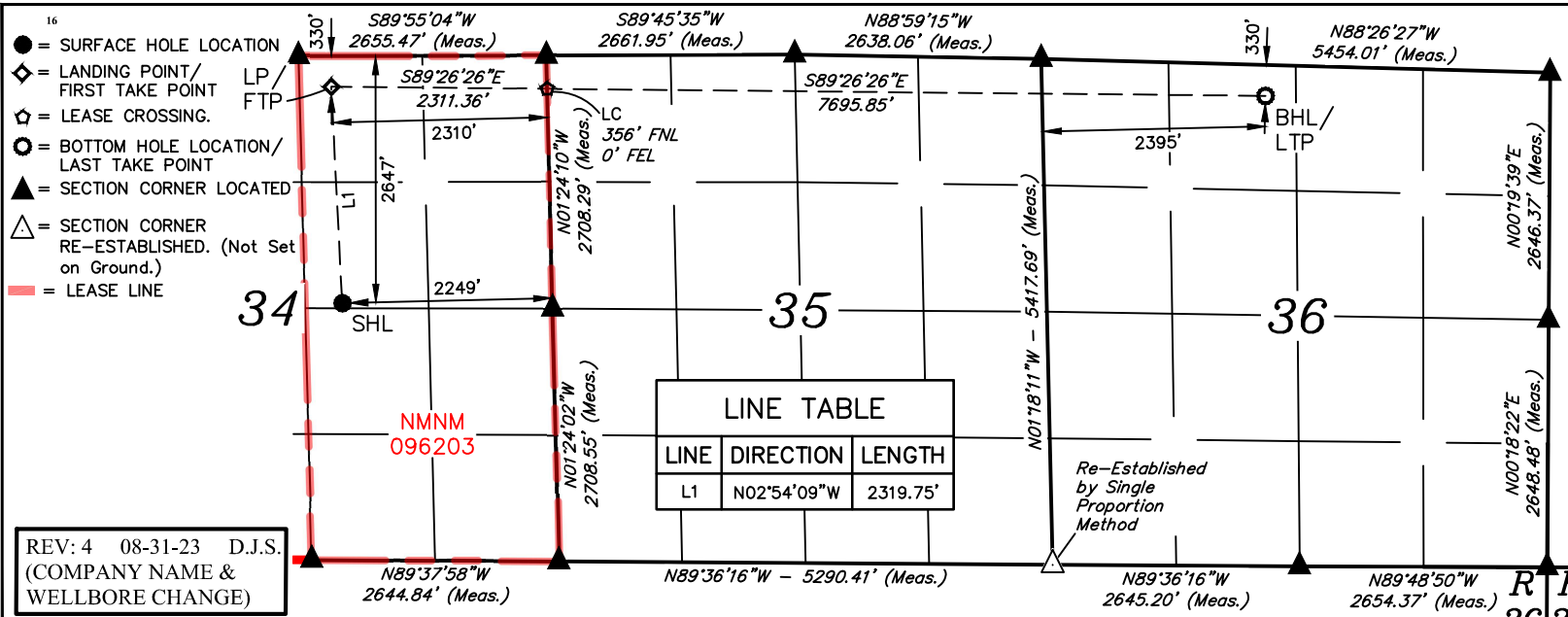
<sup>10</sup> Surface Location

UL or lot no.	Section	Township	Range	Lot Idn	Feet from the	North/South line	Feet from the	East/West line	County
G	34	22S	26E		2647	NORTH	2249	EAST	EDDY

<sup>11</sup> Bottom Hole Location If Different From Surface

UL or lot no.	Section	Township	Range	Lot Idn	Feet from the	North/South line	Feet from the	East/West line	County
C	36	22S	26E		330	NORTH	2395	WEST	EDDY
<sup>12</sup> Dedicated Acres 1280		<sup>13</sup> Joint or Infill		<sup>14</sup> Consolidation Code		<sup>15</sup> Order No.			

No allowable will be assigned to this completion until all interests have been consolidated or a non-standard unit has been approved by the division.



<b>NAD 83 (SURFACE HOLE LOCATION)</b>
LATITUDE = 32°20'55.56" (32.348766°)
LONGITUDE = -104°16'46.16" (-104.279488°)
<b>NAD 27 (SURFACE HOLE LOCATION)</b>
LATITUDE = 32°20'55.13" (32.348648°)
LONGITUDE = -104°16'44.34" (-104.278983°)
<b>STATE PLANE NAD 83 (N.M. EAST)</b>
N: 490616.97' E: 557965.56'
<b>STATE PLANE NAD 27 (N.M. EAST)</b>
N: 490558.10' E: 516784.11'

<b>NAD 83 (LP/FTP)</b>
LATITUDE = 32°21'18.47" (32.355131°)
LONGITUDE = -104°16'47.62" (-104.279896°)
<b>NAD 27 (LP/FTP)</b>
LATITUDE = 32°21'18.05" (32.355014°)
LONGITUDE = -104°16'45.81" (-104.279391°)
<b>STATE PLANE NAD 83 (N.M. EAST)</b>
N: 492932.68' E: 557838.39'
<b>STATE PLANE NAD 27 (N.M. EAST)</b>
N: 492873.75' E: 516656.99'

<b>NAD 83 (LEASE CROSSING)</b>
LATITUDE = 32°21'18.33" (32.355093°)
LONGITUDE = -104°16'20.68" (-104.272412°)
<b>NAD 27 (LEASE CROSSING)</b>
LATITUDE = 32°21'17.91" (32.354975°)
LONGITUDE = -104°16'18.87" (-104.271908°)
<b>STATE PLANE NAD 83 (N.M. EAST)</b>
N: 492919.83' E: 560149.16'
<b>STATE PLANE NAD 27 (N.M. EAST)</b>
N: 492860.85' E: 518967.72'

<b>NAD 83 (BHL/LTP)</b>
LATITUDE = 32°21'17.86" (32.354960°)
LONGITUDE = -104°14'50.99" (-104.247496°)
<b>NAD 27 (BHL/LTP)</b>
LATITUDE = 32°21'17.43" (32.354842°)
LONGITUDE = -104°14'49.17" (-104.246993°)
<b>STATE PLANE NAD 83 (N.M. EAST)</b>
N: 492877.04' E: 567843.06'
<b>STATE PLANE NAD 27 (N.M. EAST)</b>
N: 492817.90' E: 526661.49'



SCALE  
DRAWN BY: S.T.O. 10-12-21

<sup>17</sup> OPERATOR  
CERTIFICATION

I hereby certify that the information contained herein is true and complete to the best of my knowledge and belief, and that this organization either owns a working interest or unleased mineral interest in the land including the proposed bottom hole location or has a right to drill this well at this location pursuant to a contract with an owner of such a mineral or working interest, or to a voluntary pooling agreement or a compulsory pooling order heretofore entered by the division.

Signature \_\_\_\_\_ Date \_\_\_\_\_

Printed Name \_\_\_\_\_

E-mail Address \_\_\_\_\_

<sup>18</sup> SURVEYOR  
CERTIFICATION

I hereby certify that the well location shown on this plat was plotted from field notes of actual surveys made by me or under my supervision, and that the same is true and correct to the best of my belief.

May 23, 2022

Date of Survey  
Signature and Seal of Professional Surveyor:



Certificate Number: \_\_\_\_\_

- NOTE:
- Distances referenced on plat to section lines are perpendicular.
  - Basis of Bearing is a Transverse Mercator Projection with a Central Meridian of W103°53'00" (NAD 83).

District I  
1625 N. French Dr., Hobbs, NM 88240  
Phone: (575) 393-6161 Fax: (575) 393-0720  
District II  
811 S. First St., Artesia, NM 88210  
Phone: (575) 748-1283 Fax: (575) 748-9720  
District III  
1000 Rio Brazos Road, Aztec, NM 87410  
Phone: (505) 334-6178 Fax: (505) 334-6170  
District IV  
1220 S. St. Francis Dr., Santa Fe, NM 87505  
Phone: (505) 476-3460 Fax: (505) 476-3462

State of New Mexico  
Energy, Minerals & Natural Resources Department  
OIL CONSERVATION DIVISION  
1220 South St. Francis Dr.  
Santa Fe, NM 87505

Form C-102  
Revised August 1, 2011  
Submit one copy to appropriate  
District Office

☐ AMENDED REPORT

WELL LOCATION AND ACREAGE DEDICATION PLAT

<sup>1</sup> API Number		<sup>2</sup> Pool Code	<sup>3</sup> Pool Name
<sup>4</sup> Property Code		<sup>5</sup> Property Name PENNY 34/36 FED COM	
<sup>7</sup> OGRID No.		<sup>8</sup> Operator Name MEWBOURNE OIL COMPANY	
		<sup>6</sup> Well Number 713H	<sup>9</sup> Elevation 3268.3'

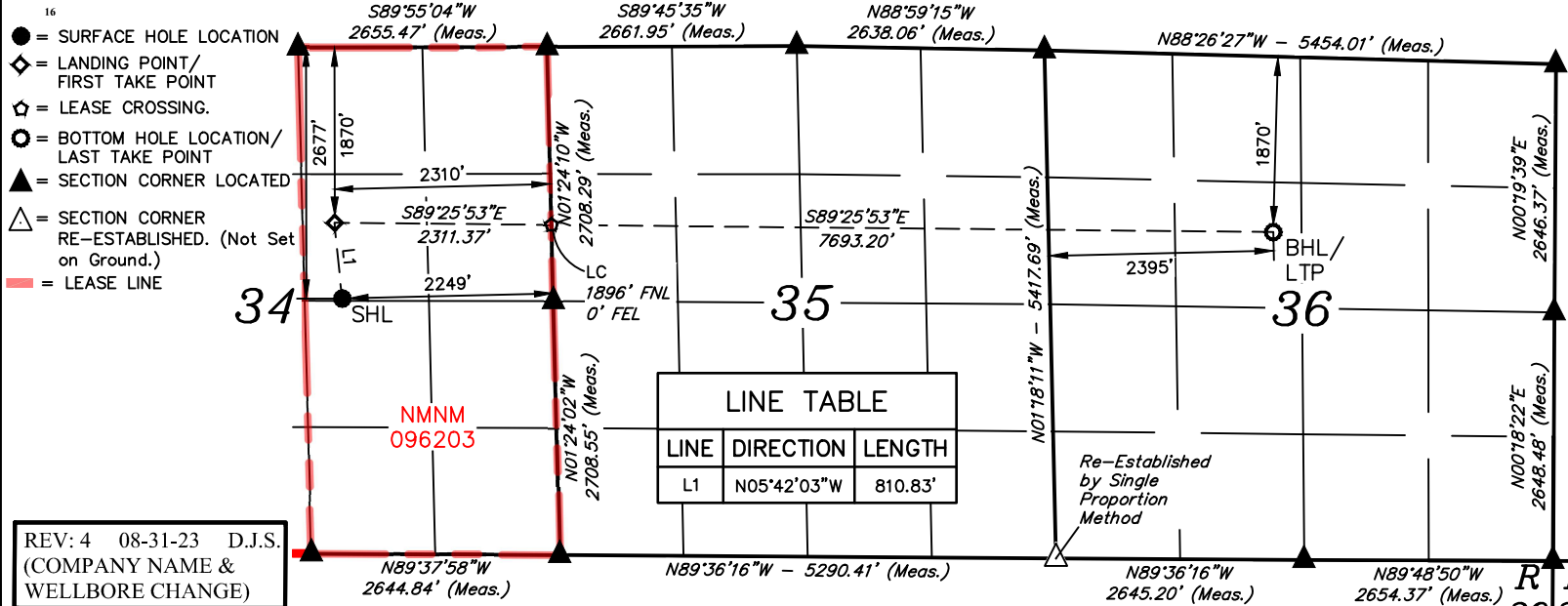
<sup>10</sup> Surface Location

UL or lot no.	Section	Township	Range	Lot Idn	Feet from the	North/South line	Feet from the	East/West line	County
G	34	22S	26E		2677	NORTH	2249	EAST	EDDY

<sup>11</sup> Bottom Hole Location If Different From Surface

UL or lot no.	Section	Township	Range	Lot Idn	Feet from the	North/South line	Feet from the	East/West line	County
F	36	22S	26E		1870	NORTH	2395	WEST	EDDY
<sup>12</sup> Dedicated Acres 1280		<sup>13</sup> Joint or Infill		<sup>14</sup> Consolidation Code		<sup>15</sup> Order No.			

No allowable will be assigned to this completion until all interests have been consolidated or a non-standard unit has been approved by the division.



NAD 83 (SURFACE HOLE LOCATION)	
LATITUDE = 32°20'55.26" (32.348683°)	
LONGITUDE = -104°16'46.14" (-104.279485°)	
NAD 27 (SURFACE HOLE LOCATION)	
LATITUDE = 32°20'54.84" (32.348566°)	
LONGITUDE = -104°16'44.33" (-104.278981°)	
STATE PLANE NAD 83 (N.M. EAST)	
N: 490587.00' E: 557966.48'	
STATE PLANE NAD 27 (N.M. EAST)	
N: 490528.12' E: 516785.03'	

NAD 83 (LP/FTP)	
LATITUDE = 32°21'03.24" (32.350900°)	
LONGITUDE = -104°16'47.12" (-104.279755°)	
NAD 27 (LP/FTP)	
LATITUDE = 32°21'02.82" (32.350782°)	
LONGITUDE = -104°16'45.30" (-104.279251°)	
STATE PLANE NAD 83 (N.M. EAST)	
N: 491393.28' E: 557882.57'	
STATE PLANE NAD 27 (N.M. EAST)	
N: 491334.38' E: 516701.14'	

NAD 83 (LEASE CROSSING)	
LATITUDE = 32°21'03.10" (32.350860°)	
LONGITUDE = -104°16'20.18" (-104.272272°)	
NAD 27 (LEASE CROSSING)	
LATITUDE = 32°21'02.67" (32.350742°)	
LONGITUDE = -104°16'18.37" (-104.271768°)	
STATE PLANE NAD 83 (N.M. EAST)	
N: 491380.05' E: 560193.34'	
STATE PLANE NAD 27 (N.M. EAST)	
N: 491321.11' E: 519011.87'	

NAD 83 (BHL/LTP)	
LATITUDE = 32°21'02.61" (32.350724°)	
LONGITUDE = -104°14'50.52" (-104.247365°)	
NAD 27 (BHL/LTP)	
LATITUDE = 32°21'02.18" (32.350606°)	
LONGITUDE = -104°14'48.71" (-104.246863°)	
STATE PLANE NAD 83 (N.M. EAST)	
N: 491336.04' E: 567884.59'	
STATE PLANE NAD 27 (N.M. EAST)	
N: 491276.94' E: 526702.99'	



SCALE  
DRAWN BY: S.T.O. 10-12-21

**17 OPERATOR  
CERTIFICATION**

I hereby certify that the information contained herein is true and complete to the best of my knowledge and belief, and that this organization either owns a working interest or unleased mineral interest in the land including the proposed bottom hole location or has a right to drill this well at this location pursuant to a contract with an owner of such a mineral or working interest, or to a voluntary pooling agreement or a compulsory pooling order heretofore entered by the division.

Signature \_\_\_\_\_ Date \_\_\_\_\_

Printed Name \_\_\_\_\_

E-mail Address \_\_\_\_\_

**18 SURVEYOR  
CERTIFICATION**

I hereby certify that the well location shown on this plat was plotted from field notes of actual surveys made by me or under my supervision, and that the same is true and correct to the best of my belief.

May 23, 2022

Date of Survey  
Signature and Seal of Professional Surveyor:



Certificate Number: \_\_\_\_\_

- NOTE:
- Distances referenced on plat to section lines are perpendicular.
  - Basis of Bearing is a Transverse Mercator Projection with a Central Meridian of W103°53'00" (NAD 83).

T22S  
R26E  
T23S  
R27E



District I  
1625 N. French Dr., Hobbs, NM 88240  
Phone: (575) 393-6161 Fax: (575) 393-0720  
District II  
811 S. First St., Artesia, NM 88210  
Phone: (575) 748-1283 Fax: (575) 748-9720  
District III  
1000 Rio Brazos Road, Aztec, NM 87410  
Phone: (505) 334-6178 Fax: (505) 334-6170  
District IV  
1220 S. St. Francis Dr., Santa Fe, NM 87505  
Phone: (505) 476-3460 Fax: (505) 476-3462

State of New Mexico  
Energy, Minerals & Natural Resources Department  
OIL CONSERVATION DIVISION  
1220 South St. Francis Dr.  
Santa Fe, NM 87505

Form C-102  
Revised August 1, 2011  
Submit one copy to appropriate  
District Office

☐ AMENDED REPORT

WELL LOCATION AND ACREAGE DEDICATION PLAT

<sup>1</sup> API Number		<sup>2</sup> Pool Code	<sup>3</sup> Pool Name
<sup>4</sup> Property Code		<sup>5</sup> Property Name PENNY 34/36 FED COM	
<sup>7</sup> OGRID No.		<sup>8</sup> Operator Name MEWBOURNE OIL COMPANY	
		<sup>6</sup> Well Number 716H	<sup>9</sup> Elevation 3269.0'

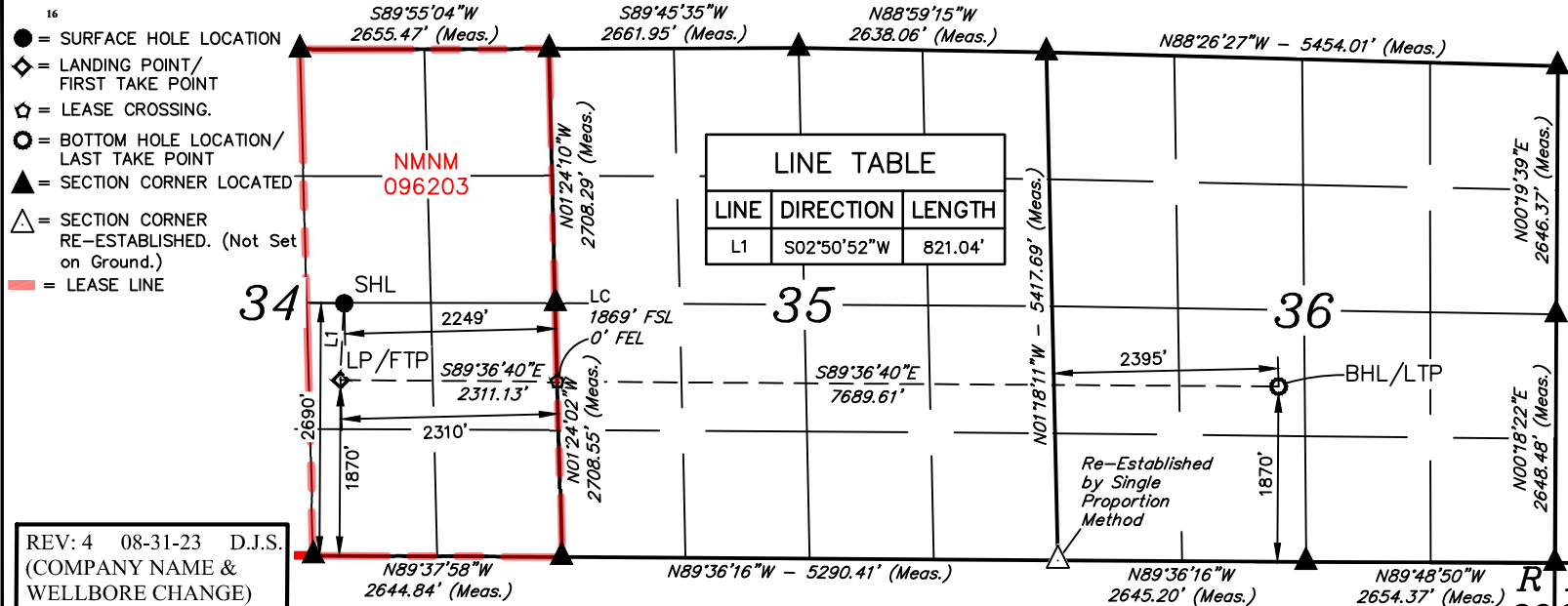
<sup>10</sup> Surface Location

UL or lot no.	Section	Township	Range	Lot Idn	Feet from the	North/South line	Feet from the	East/West line	County
J	34	22S	26E		2690	SOUTH	2249	EAST	EDDY

<sup>11</sup> Bottom Hole Location If Different From Surface

UL or lot no.	Section	Township	Range	Lot Idn	Feet from the	North/South line	Feet from the	East/West line	County
K	36	22S	26E		1870	SOUTH	2395	WEST	EDDY
<sup>12</sup> Dedicated Acres 1280		<sup>13</sup> Joint or Infill		<sup>14</sup> Consolidation Code		<sup>15</sup> Order No.			

No allowable will be assigned to this completion until all interests have been consolidated or a non-standard unit has been approved by the division.



NAD 83 (SURFACE HOLE LOCATION)
LATITUDE = 32°20'54.96" (32.348601°)
LONGITUDE = -104°16'46.13" (-104.279482°)
NAD 27 (SURFACE HOLE LOCATION)
LATITUDE = 32°20'54.54" (32.348483°)
LONGITUDE = -104°16'44.32" (-104.278978°)
STATE PLANE NAD 83 (N.M. EAST)
N: 490557.02' E: 557967.40'
STATE PLANE NAD 27 (N.M. EAST)
N: 490498.14' E: 516785.95'

NAD 83 (LP/FTP)
LATITUDE = 32°20'46.85" (32.346347°)
LONGITUDE = -104°16'46.57" (-104.279604°)
NAD 27 (LP/FTP)
LATITUDE = 32°20'46.43" (32.346229°)
LONGITUDE = -104°16'44.76" (-104.279100°)
STATE PLANE NAD 83 (N.M. EAST)
N: 489737.03' E: 557930.06'
STATE PLANE NAD 27 (N.M. EAST)
N: 489678.18' E: 516748.60'

NAD 83 (LEASE CROSSING)
LATITUDE = 32°20'46.78" (32.346327°)
LONGITUDE = -104°16'19.64" (-104.272122°)
NAD 27 (LEASE CROSSING)
LATITUDE = 32°20'46.35" (32.346209°)
LONGITUDE = -104°16'17.83" (-104.271618°)
STATE PLANE NAD 83 (N.M. EAST)
N: 489731.06' E: 560240.63'
STATE PLANE NAD 27 (N.M. EAST)
N: 489672.16' E: 519059.12'

NAD 83 (BHL/LTP)
LATITUDE = 32°20'46.53" (32.346258°)
LONGITUDE = -104°14'50.02" (-104.247228°)
NAD 27 (BHL/LTP)
LATITUDE = 32°20'46.10" (32.346140°)
LONGITUDE = -104°14'48.21" (-104.246725°)
STATE PLANE NAD 83 (N.M. EAST)
N: 489711.20' E: 567928.39'
STATE PLANE NAD 27 (N.M. EAST)
N: 489652.15' E: 526746.76'



SCALE  
DRAWN BY: S.T.O. 10-12-21

**17 OPERATOR  
CERTIFICATION**

I hereby certify that the information contained herein is true and complete to the best of my knowledge and belief, and that this organization either owns a working interest or unleased mineral interest in the land including the proposed bottom hole location or has a right to drill this well at this location pursuant to a contract with an owner of such a mineral or working interest, or to a voluntary pooling agreement or a compulsory pooling order heretofore entered by the division.

Signature \_\_\_\_\_ Date \_\_\_\_\_

Printed Name \_\_\_\_\_

E-mail Address \_\_\_\_\_

**18 SURVEYOR  
CERTIFICATION**

I hereby certify that the well location shown on this plat was plotted from field notes of actual surveys made by me or under my supervision, and that the same is true and correct to the best of my belief.

May 23, 2022

Date of Survey  
Signature and Seal of Professional Surveyor:



Certificate Number: \_\_\_\_\_

- NOTE:**
- Distances referenced on plat to section lines are perpendicular.
  - Basis of Bearing is a Transverse Mercator Projection with a Central Meridian of W103°53'00" (NAD 83).

District I  
1625 N. French Dr., Hobbs, NM 88240  
Phone: (575) 393-6161 Fax: (575) 393-0720  
District II  
811 S. First St., Artesia, NM 88210  
Phone: (575) 748-1283 Fax: (575) 748-9720  
District III  
1000 Rio Brazos Road, Aztec, NM 87410  
Phone: (505) 334-6178 Fax: (505) 334-6170  
District IV  
1220 S. St. Francis Dr., Santa Fe, NM 87505  
Phone: (505) 476-3460 Fax: (505) 476-3462

State of New Mexico  
Energy, Minerals & Natural Resources Department  
OIL CONSERVATION DIVISION  
1220 South St. Francis Dr.  
Santa Fe, NM 87505

Form C-102  
Revised August 1, 2011  
Submit one copy to appropriate  
District Office

☐ AMENDED REPORT

WELL LOCATION AND ACREAGE DEDICATION PLAT

1 API Number		2 Pool Code		3 Pool Name	
4 Property Code		5 Property Name PENNY 34/36 FED COM		6 Well Number 718H	
7 OGRID No.		8 Operator Name MEWBOURNE OIL COMPANY		9 Elevation 3270.0'	

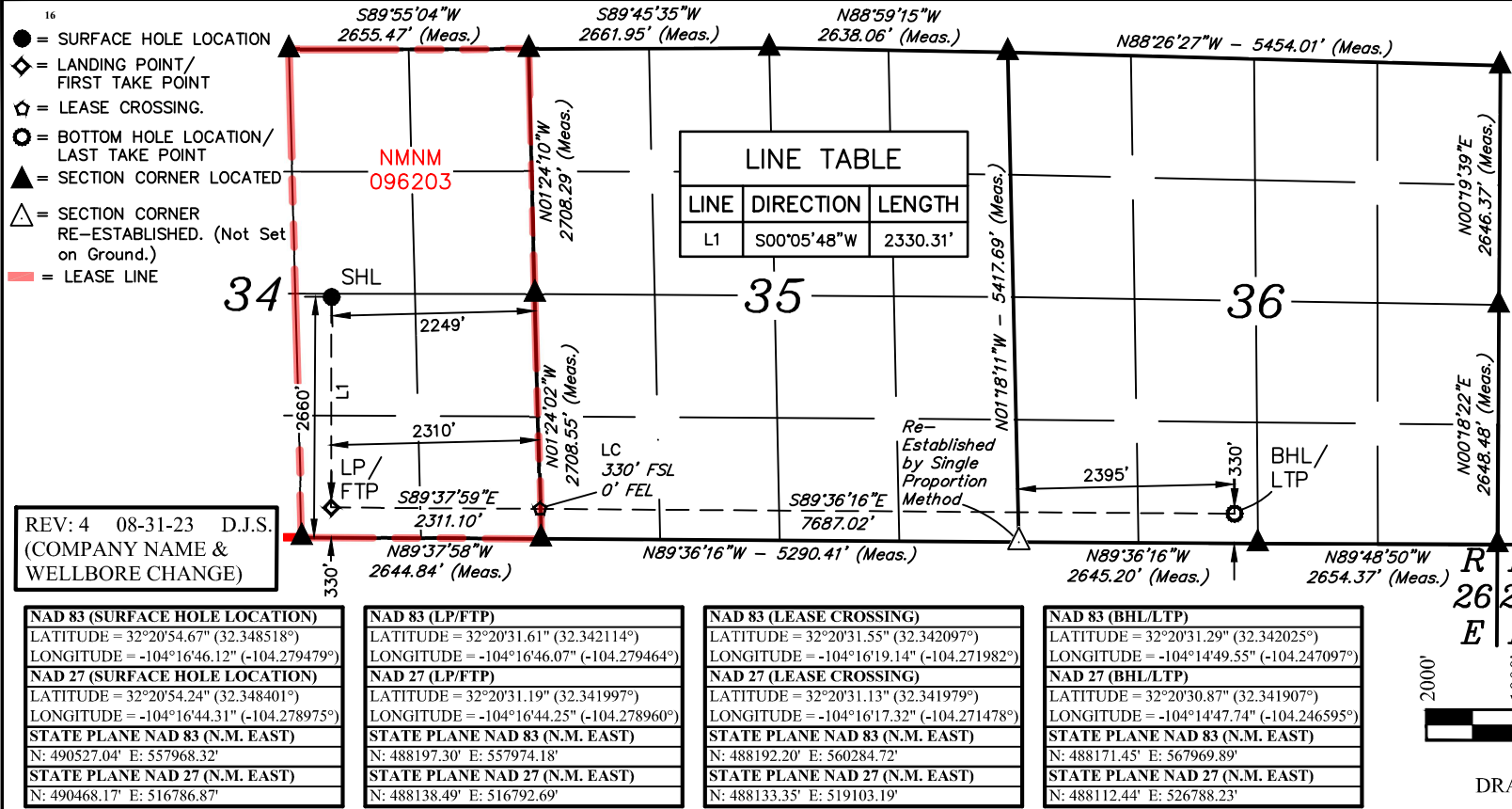
10 Surface Location

UL or lot no.	Section	Township	Range	Lot Idn	Feet from the	North/South line	Feet from the	East/West line	County
J	34	22S	26E		2660	SOUTH	2249	EAST	EDDY

11 Bottom Hole Location If Different From Surface

UL or lot no.	Section	Township	Range	Lot Idn	Feet from the	North/South line	Feet from the	East/West line	County
N	36	22S	26E		330	SOUTH	2395	WEST	EDDY
12 Dedicated Acres 1280		13 Joint or Infill		14 Consolidation Code		15 Order No.			

No allowable will be assigned to this completion until all interests have been consolidated or a non-standard unit has been approved by the division.



17 OPERATOR  
CERTIFICATION

I hereby certify that the information contained herein is true and complete to the best of my knowledge and belief, and that this organization either owns a working interest or unleased mineral interest in the land including the proposed bottom hole location or has a right to drill this well at this location pursuant to a contract with an owner of such a mineral or working interest, or to a voluntary pooling agreement or a compulsory pooling order heretofore entered by the division.

Signature \_\_\_\_\_ Date \_\_\_\_\_

Printed Name \_\_\_\_\_

E-mail Address \_\_\_\_\_

18 SURVEYOR  
CERTIFICATION

I hereby certify that the well location shown on this plat was plotted from field notes of actual surveys made by me or under my supervision, and that the same is true and correct to the best of my belief.

May 23, 2022

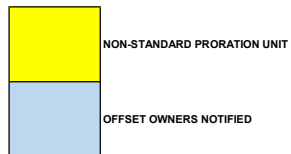
Date of Survey  
Signature and Seal of Professional Surveyor:



Certificate Number: \_\_\_\_\_

- NOTE:
- Distances referenced on plat to section lines are perpendicular.
  - Basis of Bearing is a Transverse Mercator Projection with a Central Meridian of W103°53'00" (NAD 83).

28		27		26		25		30-22S-27E	
33		34		35		36		31-22S-27E	
4-23S-26E		3-23S-26E		2-23S-26E		1-23S-26E		6-23S-27E	





**MEWBOURNE OIL COMPANY**

500 WEST TEXAS AVENUE, SUITE 1020  
MIDLAND, TEXAS 79701-4279

TELEPHONE (432) 682-3715

August 29, 2023

Via Certified Mail

Affected Parties (See Attached List)

Re: Application for Non-Standard Proration Unit

**PENNY 34/36 FED COM #711H**

Surface Location: 2647' FNL & 2249' FEL (Sec. 34)

Proposed first take point: 330' FNL & 2310' FEL (Unit B) (Sec. 34)

Bottomhole Location: 330' FNL & 2395' FWL (Sec. 36)

Proposed last take point: 330' FNL & 2395' FWL (Unit C) (Sec. 36)

**PENNY 34/36 FED COM #713H**

Surface Location: 2677' FNL & 2249' FEL (Sec. 34)

Proposed first take point: 1870' FNL & 2310' FEL (Unit G) (Sec. 34)

Bottomhole Location: 1870' FNL & 2395' FWL (Sec. 36)

Proposed last take point: 1870' FNL & 2395' FWL (Unit F) (Sec. 36)

**PENNY 34/36 FED COM #716H**

Surface Location: 2690' FSL & 2249' FEL (Sec. 34)

Proposed first take point: 1870' FSL & 2310' FEL (Unit J) (Sec. 34)

Bottomhole Location: 1870' FSL & 2395' FWL (Sec. 36)

Proposed last take point: 1870' FSL & 2395' FWL (Unit K) (Sec. 36)

**PENNY 34/36 FED COM #718H**

Surface Location: 2660' FSL & 2249' FEL (Sec. 34)

Proposed first take point: 330' FSL & 2310' FEL (Unit O) (Sec. 34)

Bottomhole Location: 330' FSL & 2395' FWL (Sec. 36)

Proposed last take point: 330' FSL & 2395' FWL (Unit N) (Sec. 36)

All wells located across the E2 of Section 34, Section 35, and the W2 Section 36  
Township 22 South, Range 26 East, Eddy County, New Mexico

To Whom It May Concern:

Enclosed is a copy of Mewbourne Oil Company's (MOC) Application for Non-Standard Proration Unit for the PENNY 34/36 FED COM #711H, PENNY 34/36 FED COM #713H, PENNY 34/36 FED COM #716H, and the PENNY 34/36 FED COM #718H wells covering the E2 of Section 34, All of Section 35, and the W2 of Section 36, Township 22 South, Range 26 East, Eddy County, New Mexico. You are being sent a copy of this Application per OCD's requirements to notify the interest owners in the affected offset acreage. If you have any objection to this Application, notification should be given within 20 days of the date of this letter. The Application has been filed with the OCD as of this date.

Mewbourne is seeking approval of this NSP to eliminate the need for separate production facilities and additional administrative approvals in addition to giving us flexibility in locating our laterals and drilling infills in other horizons. These reasons will provide for reducing waste and our surface imprint while protecting correlative rights within the referenced horizontal spacing unit. This NSP will also possibly reduce emissions by consolidating the tank battery.

If you have any questions regarding this application, please contact me via telephone at 432-682-3715 or via email at [bdunn@mewbourne.com](mailto:bdunn@mewbourne.com).

Sincerely,

**MEWBOURNE OIL COMPANY**

A handwritten signature in blue ink, appearing to read "B. Dunn", is positioned above the printed name.

Brad Dunn  
Landman

ADDRESS LINE 1	ADDRESS LINE 2	CITY	STATE	ZIP	CERTIFIED NUMBER
New Mexico State Office	301 Dinosaur Trail	Santa Fe	New Mexico	87508	9414 8361 0544 0329 9263 90
P.O. Box 1148		Santa Fe	New Mexico	87504-1148	9392 9161 0544 0329 9263 90
1000 W. Wilshire Boulevard	STE 311	Nichols Hills	OK	73116	9578 9961 0544 0329 9263 90
333 West Sheridan Ave.		Oklahoma City	OK	73102	9639 5161 0544 0329 9263 90
333 West Sheridan Ave.		Oklahoma City	OK	73102	9712 6061 0544 0329 9263 90
P.O. Box 4294		Houston	TX	77210-4294	9789 3161 0544 0329 9263 90
P.O. Box 429		Roswell	NM	88202	9867 8361 0544 0329 9263 90
600 Grant Street	STE 620	Denver	CO	80203	9949 5561 0544 0329 9263 90

**District I**  
1625 N. French Dr., Hobbs, NM 88240  
Phone:(575) 393-6161 Fax:(575) 393-0720  
**District II**  
811 S. First St., Artesia, NM 88210  
Phone:(575) 748-1283 Fax:(575) 748-9720  
**District III**  
1000 Rio Brazos Rd., Aztec, NM 87410  
Phone:(505) 334-6178 Fax:(505) 334-6170  
**District IV**  
1220 S. St Francis Dr., Santa Fe, NM 87505  
Phone:(505) 476-3470 Fax:(505) 476-3462

**State of New Mexico**  
**Energy, Minerals and Natural Resources**  
**Oil Conservation Division**  
**1220 S. St Francis Dr.**  
**Santa Fe, NM 87505**

CONDITIONS  
  
Action 263465

CONDITIONS

Operator: MEWBOURNE OIL CO P.O. Box 5270 Hobbs, NM 88241	OGRID: 14744
	Action Number: 263465
	Action Type: [UF-NSP] Non-Standard Proration (NSP)

CONDITIONS

Created By	Condition	Condition Date
llowe	None	9/11/2023