

Revised March 23, 2017

ID NO. 281298

NSL - 8679

RECEIVED:	REVIEWER:	TYPE:	APP NO: pLEL2330632895
-----------	-----------	-------	-------------------------------

ABOVE THIS TABLE FOR OCD DIVISION USE ONLY

NEW MEXICO OIL CONSERVATION DIVISION
 - Geological & Engineering Bureau -
 1220 South St. Francis Drive, Santa Fe, NM 87505

**ADMINISTRATIVE APPLICATION CHECKLIST**

THIS CHECKLIST IS MANDATORY FOR ALL ADMINISTRATIVE APPLICATIONS FOR EXCEPTIONS TO DIVISION RULES AND REGULATIONS WHICH REQUIRE PROCESSING AT THE DIVISION LEVEL IN SANTA FE

Applicant: OXY USA INC. **OGRID Number:** 16696
Well Name: Stack Cats 25 36 Fed Com 24H **API:** 30-025-51754
Pool: Red Tank, Bonespring **Pool Code:** 51683

SUBMIT ACCURATE AND COMPLETE INFORMATION REQUIRED TO PROCESS THE TYPE OF APPLICATION INDICATED BELOW

1) TYPE OF APPLICATION: Check those which apply for [A]

A. Location – Spacing Unit – Simultaneous Dedication

☒ NSL ☐ NSP (PROJECT AREA) ☐ NSP (PRORATION UNIT) ☐ SD

B. Check one only for [I] or [II]

[I] Commingling – Storage – Measurement

☐ DHC ☐ CTB ☐ PLC ☐ PC ☐ OLS ☐ OLM

[II] Injection – Disposal – Pressure Increase – Enhanced Oil Recovery

☐ WFX ☐ PMX ☐ SWD ☐ IPI ☐ EOR ☐ PPR

2) NOTIFICATION REQUIRED TO: Check those which apply.

- A. ☒ Offset operators or lease holders
 B. ☐ Royalty, overriding royalty owners, revenue owners
 C. ☐ Application requires published notice
 D. ☐ Notification and/or concurrent approval by SLO
 E. ☒ Notification and/or concurrent approval by BLM
 F. ☐ Surface owner
 G. ☒ For all of the above, proof of notification or publication is attached, and/or,
 H. ☐ No notice required

FOR OCD ONLY

- ☐ Notice Complete
☐ Application Content Complete

3) CERTIFICATION: I hereby certify that the information submitted with this application for administrative approval is **accurate** and **complete** to the best of my knowledge. I also understand that **no action** will be taken on this application until the required information and notifications are submitted to the Division.

Note: Statement must be completed by an individual with managerial and/or supervisory capacity.

10/25/2023

Date

Sarah McKinney

Print or Type Name

713-215-7295

Phone Number

Sarah McKinney

Signature

SARAH_MCKINNEY@OXY.COM

e-mail Address



OXY USA Inc

**5 Greenway Plaza, Suite 110
Houston, TX 77046-0521**

October 25, 2023

New Mexico Oil Conservation Division
1220 South St. Francis Dr.
Santa Fe, NM 87505

Attention: Leonard Lowe

Re: ***Application for Administrative Approval of Non-Standard Location
Stack Cats 25 36 Fed Com 24H –Red Tank, Bone Spring
Lea County, New Mexico***

Dear Mr. Lowe:

OXY USA Inc. respectfully requests administrative approval of a non-standard location on the Stack Cats 25 36 Fed Com 24H well, API Number 30-025-51754, Property Code 333676. The well is proposed to be completed closer than the 330' horizontal rule (NMAC19.15.16.15) setback. The proposed completed interval is projected as follows:

Surface – 890' FSL 2333' FEL Unit O Sec 24 T22S R32E
First Take Point – 100' FNL 2555' FWL Unit C Sec 25 T22S R32E
Last Take Point – 100' FSL 2555' FWL Unit N Sec36 T22S R32E
Bottom Hole – 20' FSL 2555' FWL Unit N Sec 36 T22S R32E

The planned Horizontal Spacing Unit will be 640 -acres including the West ½ of sections 25 and 36, T22S R32E.

- The adjoining units which the unorthodox location encroaches are located to the East in T22S R32E, Section 25 & 36 – Units A, B, G, H, J, I, O, and P, which is operated by OXY USA, Inc.

Approval of the unorthodox, completed interval will allow for efficient spacing of horizontal wells and thereby prevent waste.

To support this request, the following information has been submitted for your review:

1. C-102 Plat for the proposed well and additional plats with offsetting well and affected spacing units.
2. List of affected offset parties in each adjoining spacing unit in the same pool or formation located closer to the unorthodox well location than the minimum distance prescribed by applicable rule or order, copies of the signed certified return receipts will be furnished upon request.

If you need any additional information, please call me at 713-215-7295.

Sincerely,

A handwritten signature in black ink that reads "Sarah McKinney".

Sarah McKinney
Regulatory Analyst Sr.
Sarah_McKinney@oxy.com

District I
1625 N. French Dr., Hobbs, NM 88240
Phone: (575) 393-6161 Fax: (575) 393-0720
District II
811 S. First St., Artesia, NM 88210
Phone: (575) 748-1283 Fax: (575) 748-9720
District III
1000 Rio Brazos Road, Aztec, NM 87410
Phone: (505) 334-6178 Fax: (505) 334-6170
District IV
1220 S. St. Francis Dr., Santa Fe, NM 87505
Phone: (505) 476-3460 Fax: (505) 476-3462

State of New Mexico
Energy, Minerals & Natural Resources Department
OIL CONSERVATION DIVISION
1220 South St. Francis Dr.
Santa Fe, NM 87505

Form C-102 Revised August 1, 2011
Submit one copy to appropriate
District Office

☐ AMENDED REPORT

WELL LOCATION AND ACREAGE DEDICATION PLAT

¹ API Number 30-025-51754	² Pool Code 51683	³ Pool Name Red Tank; Bone Spring
⁴ Property Code 333676	⁵ Property Name STACK CATS 25_36 FED COM	⁶ Well Number 24H
⁷ OGRID No. 16696	⁸ Operator Name OXY USA INC.	⁹ Elevation 3753'

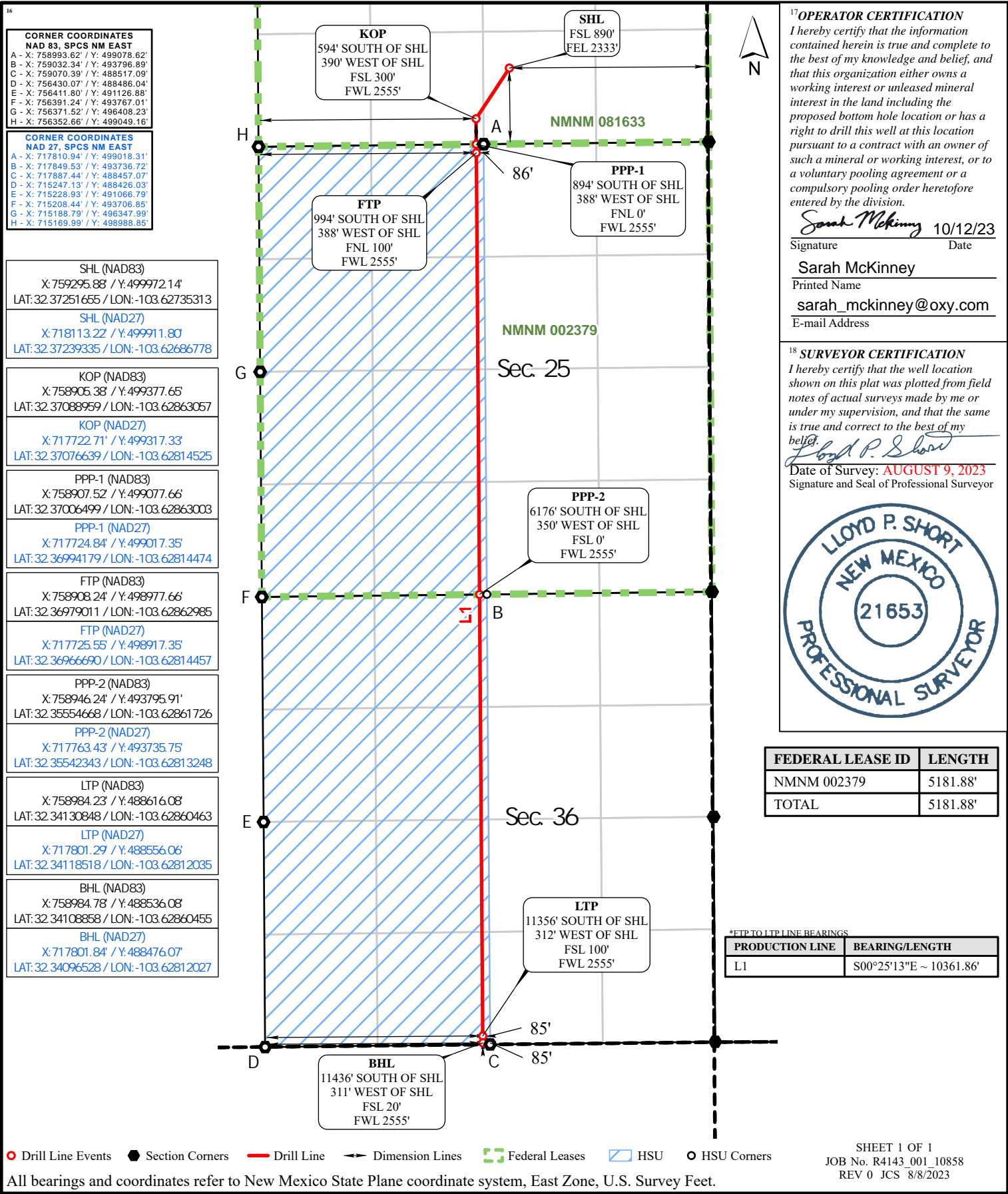
¹⁰ Surface Location

UL or lot no. O	Section 24	Township 22S	Range 32E	Lot Idn	Feet from the 890'	North/South line SOUTH	Feet from the 2333'	East/West line EAST	County LEA
--------------------	---------------	-----------------	--------------	---------	-----------------------	---------------------------	------------------------	------------------------	---------------

¹¹ Bottom Hole Location If Different From Surface

UL or lot no. N	Section 36	Township 22S	Range 32E	Lot Idn	Feet from the 20'	North/South line SOUTH	Feet from the 2555'	East/West line WEST	County LEA
¹² Dedicated Acres 640.00	¹³ Joint or Infill	¹⁴ Consolidation Code	¹⁵ Order No.						

No allowable will be assigned to this completion until all interests have been consolidated or a non-standard unit has been approved by the division.



SHL (NAD83)
X: 759295.88 / Y: 499972.14'
LAT: 32.37251655 / LON: -103.62735313

SHL (NAD27)
X: 718113.22 / Y: 499911.80'
LAT: 32.37239335 / LON: -103.62686778

KOP (NAD83)
X: 758905.38 / Y: 499377.65'
LAT: 32.37088959 / LON: -103.62863057

KOP (NAD27)
X: 717722.71 / Y: 499317.33'
LAT: 32.37076639 / LON: -103.62814525

PPP-1 (NAD83)
X: 758907.52 / Y: 499077.66'
LAT: 32.37006499 / LON: -103.62863003

PPP-1 (NAD27)
X: 717724.84 / Y: 499017.35'
LAT: 32.36994179 / LON: -103.62814474

FTP (NAD83)
X: 758908.24 / Y: 498977.66'
LAT: 32.36979011 / LON: -103.62862985

FTP (NAD27)
X: 717725.55 / Y: 498917.35'
LAT: 32.36966690 / LON: -103.62814457

PPP-2 (NAD83)
X: 758946.24 / Y: 493795.91'
LAT: 32.3554668 / LON: -103.62861726

PPP-2 (NAD27)
X: 717763.43 / Y: 493735.75'
LAT: 32.35542343 / LON: -103.62813248

LTP (NAD83)
X: 758984.23 / Y: 488616.08'
LAT: 32.34130848 / LON: -103.62860463

LTP (NAD27)
X: 717801.29 / Y: 488556.06'
LAT: 32.34118518 / LON: -103.62812035

BHL (NAD83)
X: 758984.78 / Y: 488536.08'
LAT: 32.34108858 / LON: -103.62860455

BHL (NAD27)
X: 717801.84 / Y: 488476.07'
LAT: 32.34096528 / LON: -103.62812027

SHL (NAD83)
X: 759295.88 / Y: 499972.14'
LAT: 32.37251655 / LON: -103.62735313

SHL (NAD27)
X: 718113.22 / Y: 499911.80'
LAT: 32.37239335 / LON: -103.62686778

KOP (NAD83)
X: 758905.38 / Y: 499377.65'
LAT: 32.37088959 / LON: -103.62863057

KOP (NAD27)
X: 717722.71 / Y: 499317.33'
LAT: 32.37076639 / LON: -103.62814525

PPP-1 (NAD83)
X: 758907.52 / Y: 499077.66'
LAT: 32.37006499 / LON: -103.62863003

PPP-1 (NAD27)
X: 717724.84 / Y: 499017.35'
LAT: 32.36994179 / LON: -103.62814474

FTP (NAD83)
X: 758908.24 / Y: 498977.66'
LAT: 32.36979011 / LON: -103.62862985

FTP (NAD27)
X: 717725.55 / Y: 498917.35'
LAT: 32.36966690 / LON: -103.62814457

PPP-2 (NAD83)
X: 758946.24 / Y: 493795.91'
LAT: 32.3554668 / LON: -103.62861726

PPP-2 (NAD27)
X: 717763.43 / Y: 493735.75'
LAT: 32.35542343 / LON: -103.62813248

LTP (NAD83)
X: 758984.23 / Y: 488616.08'
LAT: 32.34130848 / LON: -103.62860463

LTP (NAD27)
X: 717801.29 / Y: 488556.06'
LAT: 32.34118518 / LON: -103.62812035

BHL (NAD83)
X: 758984.78 / Y: 488536.08'
LAT: 32.34108858 / LON: -103.62860455

BHL (NAD27)
X: 717801.84 / Y: 488476.07'
LAT: 32.34096528 / LON: -103.62812027

SHL (NAD83)
X: 759295.88 / Y: 499972.14'
LAT: 32.37251655 / LON: -103.62735313

SHL (NAD27)
X: 718113.22 / Y: 499911.80'
LAT: 32.37239335 / LON: -103.62686778

KOP (NAD83)
X: 758905.38 / Y: 499377.65'
LAT: 32.37088959 / LON: -103.62863057

KOP (NAD27)
X: 717722.71 / Y: 499317.33'
LAT: 32.37076639 / LON: -103.62814525

PPP-1 (NAD83)
X: 758907.52 / Y: 499077.66'
LAT: 32.37006499 / LON: -103.62863003

PPP-1 (NAD27)
X: 717724.84 / Y: 499017.35'
LAT: 32.36994179 / LON: -103.62814474

FTP (NAD83)
X: 758908.24 / Y: 498977.66'
LAT: 32.36979011 / LON: -103.62862985

FTP (NAD27)
X: 717725.55 / Y: 498917.35'
LAT: 32.36966690 / LON: -103.62814457

PPP-2 (NAD83)
X: 758946.24 / Y: 493795.91'
LAT: 32.3554668 / LON: -103.62861726

PPP-2 (NAD27)
X: 717763.43 / Y: 493735.75'
LAT: 32.35542343 / LON: -103.62813248

LTP (NAD83)
X: 758984.23 / Y: 488616.08'
LAT: 32.34130848 / LON: -103.62860463

LTP (NAD27)
X: 717801.29 / Y: 488556.06'
LAT: 32.34118518 / LON: -103.62812035

BHL (NAD83)
X: 758984.78 / Y: 488536.08'
LAT: 32.34108858 / LON: -103.62860455

BHL (NAD27)
X: 717801.84 / Y: 488476.07'
LAT: 32.34096528 / LON: -103.62812027

SHL (NAD83)
X: 759295.88 / Y: 499972.14'
LAT: 32.37251655 / LON: -103.62735313

SHL (NAD27)
X: 718113.22 / Y: 499911.80'
LAT: 32.37239335 / LON: -103.62686778

KOP (NAD83)
X: 758905.38 / Y: 499377.65'
LAT: 32.37088959 / LON: -103.62863057

KOP (NAD27)
X: 717722.71 / Y: 499317.33'
LAT: 32.37076639 / LON: -103.62814525

PPP-1 (NAD83)
X: 758907.52 / Y: 499077.66'
LAT: 32.37006499 / LON: -103.62863003

PPP-1 (NAD27)
X: 717724.84 / Y: 499017.35'
LAT: 32.36994179 / LON: -103.62814474

FTP (NAD83)
X: 758908.24 / Y: 498977.66'
LAT: 32.36979011 / LON: -103.62862985

FTP (NAD27)
X: 717725.55 / Y: 498917.35'
LAT: 32.36966690 / LON: -103.62814457

PPP-2 (NAD83)
X: 758946.24 / Y: 493795.91'
LAT: 32.3554668 / LON: -103.62861726

PPP-2 (NAD27)
X: 717763.43 / Y: 493735.75'
LAT: 32.35542343 / LON: -103.62813248

LTP (NAD83)
X: 758984.23 / Y: 488616.08'
LAT: 32.34130848 / LON: -103.62860463

LTP (NAD27)
X: 717801.29 / Y: 488556.06'
LAT: 32.34118518 / LON: -103.62812035

BHL (NAD83)
X: 758984.78 / Y: 488536.08'
LAT: 32.34108858 / LON: -103.62860455

BHL (NAD27)
X: 717801.84 / Y: 488476.07'
LAT: 32.34096528 / LON: -103.62812027

SHL (NAD83)
X: 759295.88 / Y: 499972.14'
LAT: 32.37251655 / LON: -103.62735313

SHL (NAD27)
X: 718113.22 / Y: 499911.80'
LAT: 32.37239335 / LON: -103.62686778

KOP (NAD83)
X: 758905.38 / Y: 499377.65'
LAT: 32.37088959 / LON: -103.62863057

KOP (NAD27)
X: 717722.71 / Y: 499317.33'
LAT: 32.37076639 / LON: -103.62814525

PPP-1 (NAD83)
X: 758907.52 / Y: 499077.66'
LAT: 32.37006499 / LON: -103.62863003

PPP-1 (NAD27)
X: 717724.84 / Y: 499017.35'
LAT: 32.36994179 / LON: -103.62814474

FTP (NAD83)
X: 758908.24 / Y: 498977.66'
LAT: 32.36979011 / LON: -103.62862985

FTP (NAD27)
X: 717725.55 / Y: 498917.35'
LAT: 32.36966690 / LON: -103.62814457

PPP-2 (NAD83)
X: 758946.24 / Y: 493795.91'
LAT: 32.3554668 / LON: -103.62861726

PPP-2 (NAD27)
X: 717763.43 / Y: 493735.75'
LAT: 32.35542343 / LON: -103.62813248

LTP (NAD83)
X: 758984.23 / Y: 488616.08'
LAT: 32.34130848 / LON: -103.62860463

LTP (NAD27)
X: 717801.29 / Y: 488556.06'
LAT: 32.34118518 / LON: -103.62812035

BHL (NAD83)
X: 758984.78 / Y: 488536.08'
LAT: 32.34108858 / LON: -103.62860455

BHL (NAD27)
X: 717801.84 / Y: 488476.07'
LAT: 32.34096528 / LON: -103.62812027

SHL (NAD83)
X: 759295.88 / Y: 499972.14'
LAT: 32.37251655 / LON: -103.62735313

SHL (NAD27)
X: 718113.22 / Y: 499911.80'
LAT: 32.37239335 / LON: -103.62686778

KOP (NAD83)
X: 758905.38 / Y: 499377.65'
LAT: 32.37088959 / LON: -103.62863057

KOP (NAD27)
X: 717722.71 / Y: 499317.33'
LAT: 32.37076639 / LON: -103.62814525

PPP-1 (NAD83)
X: 758907.52 / Y: 499077.66'
LAT: 32.37006499 / LON: -103.62863003

PPP-1 (NAD27)
X: 717724.84 / Y: 499017.35'
LAT: 32.36994179 / LON: -103.62814474

FTP (NAD83)
X: 758908.24 / Y: 498977.66'
LAT: 32.36979011 / LON: -103.62862985

FTP (NAD27)
X: 717725.55 / Y: 498917.35'
LAT: 32.36966690 / LON: -103.62814457

PPP-2 (NAD83)
X: 758946.24 / Y: 493795.91'
LAT: 32.3554668 / LON: -103.62861726

PPP-2 (NAD27)
X: 717763.43 / Y: 493735.75'
LAT: 32.35542343 / LON: -103.62813248

LTP (NAD83)
X: 758984.23 / Y: 488616.08'
LAT: 32.34130848 / LON: -103.62860463

LTP (NAD27)
X: 717801.29 / Y: 488556.06'
LAT: 32.34118518 / LON: -103.62812035

BHL (NAD83)
X: 758984.78 / Y: 488536.08'
LAT: 32.34108858 / LON: -103.62860455

BHL (NAD27)
X: 717801.84 / Y: 488476.07'
LAT: 32.34096528 / LON: -103.62812027

SHL (NAD83)
X: 759295.88 / Y: 499972.14'
LAT: 32.37251655 / LON: -103.62735313

SHL (NAD27)
X: 718113.22 / Y: 499911.80'
LAT: 32.37239335 / LON: -103.62686778

KOP (NAD83)
X: 758905.38 / Y: 499377.65'
LAT: 32.37088959 / LON: -103.62863057

KOP (NAD27)
X: 717722.71 / Y: 499317.33'
LAT: 32.37076639 / LON: -103.62814525

PPP-1 (NAD83)
X: 758907.52 / Y: 499077.66'
LAT: 32.37006499 / LON: -103.62863003

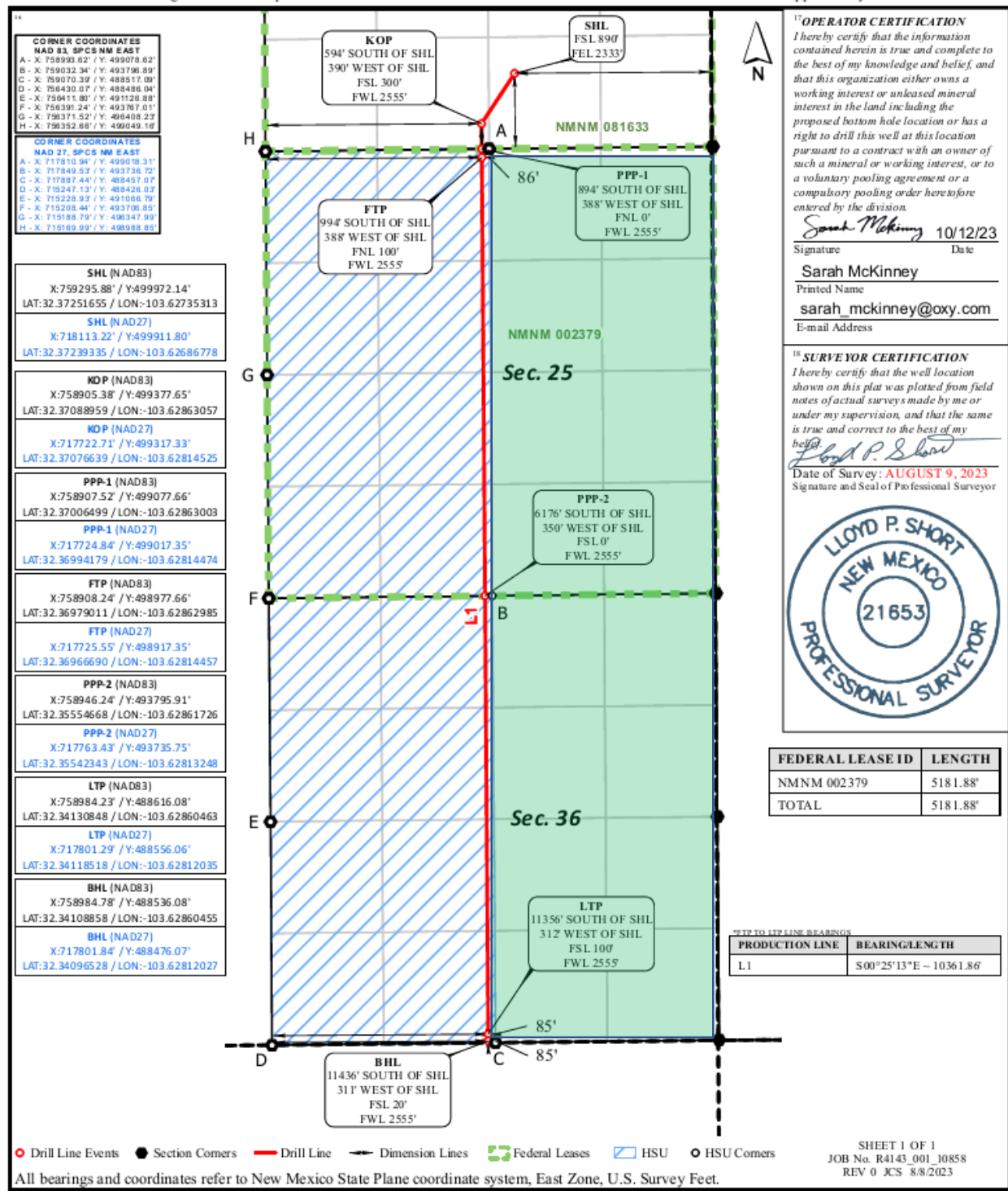
PPP-1 (NAD27)
X: 717724.84 / Y: 499017.35'
LAT: 32.36994179 / LON: -103.62814474

FTP (NAD83)
X: 758908.24 / Y: 498977.66'
LAT: 32.36979011 / LON: -103.62862985

FTP (NAD27)
X: 717725.55 / Y: 498917.35'
LAT: 32.36966690 / LON: -103.62814457

PPP-2 (NAD83)
X: 758946.24 / Y: 493795.91'
LAT: 32.3554668 / LON: -103.6

Stack Cats 25 36 Fed Com 24H, Section 24, T22S, R32E, Lea County Encroaching Tracts Plat



Encroaching Tracts

Intent ☒ As Drilled ☐

API # 30-025-51754		
Operator Name: OXY USA INC.	Property Name: Stack Cats 25 36 Fed Com	Well Number 24H

Kick Off Point (KOP)

UL N	Section 24	Township 22S	Range 32E	Lot	Feet 300	From N/S South	Feet 2555	From E/W West	County Lea
Latitude 32.37088959					Longitude -103.62863057			NAD Nad 83	

First Take Point (FTP)

UL C	Section 25	Township 22S	Range 32E	Lot	Feet 100	From N/S North	Feet 2555	From E/W West	County Lea
Latitude 32.36979011					Longitude -103.62862985			NAD Nad 83	

Last Take Point (LTP)

UL N	Section 36	Township 22S	Range 32E	Lot	Feet 100	From N/S South	Feet 2555	From E/W West	County Lea
Latitude 32.34130848					Longitude -103.62860463			NAD Nad 83	

Is this well the defining well for the Horizontal Spacing Unit? ☐ NoIs this well an infill well? ☐ Yes

If infill is yes please provide API if available, Operator Name and well number for Defining well for Horizontal Spacing Unit.

API # 30-025-51753		
Operator Name: OXY USA INC.	Property Name: Stack Cats 25 36 Fed Com	Well Number 23H

KZ 06/29/2018

District I
1625 N. French Dr., Hobbs, NM 88240
Phone: (575) 393-6161 Fax: (575) 393-0720
District II
811 S. First St., Artesia, NM 88210
Phone: (575) 748-1283 Fax: (575) 748-9720
District III
1000 Rio Brazos Road, Aztec, NM 87410
Phone: (505) 334-6178 Fax: (505) 334-6170
District IV
1220 S. St. Francis Dr., Santa Fe, NM 87505
Phone: (505) 476-3460 Fax: (505) 476-3462

State of New Mexico
Energy, Minerals & Natural Resources Department
OIL CONSERVATION DIVISION
1220 South St. Francis Dr.
Santa Fe, NM 87505

Form C-102
Revised August 1, 2011
Submit one copy to appropriate
District Office
☐ AMENDED REPORT

WELL LOCATION AND ACREAGE DEDICATION PLAT

Defining Well Plat

¹ API Number 30-025- 51753		² Pool Code 51683		³ Pool Name RED TANK; BONE SPRING	
⁴ Property Code		⁵ Property Name STACK CATS 25_36 FED COM			⁶ Well Number 23H
⁷ OGRID No. 16696		⁸ Operator Name OXY USA INC.			⁹ Elevation 3757'

¹⁰ Surface Location

UL or lot no.	Section	Township	Range	Lot Idn	Feet from the	North/South line	Feet from the	East/West line	County
M	24	22S	32E		390	SOUTH	1275	WEST	LEA

¹¹ Bottom Hole Location If Different From Surface

UL or lot no.	Section	Township	Range	Lot Idn	Feet from the	North/South line	Feet from the	East/West line	County
N	36	22S	32E		20	SOUTH	1760	WEST	LEA

¹² Dedicated Acres	¹³ Joint or Infill	¹⁴ Consolidation Code	¹⁵ Order No.
320.0			

No allowable will be assigned to this completion until all interests have been consolidated or a non-standard unit has been approved by the division.

	CORNER COORDINATES NAD 83, SPCS NM EAST A - X: 758993.62' / Y: 499078.62' B - X: 759012.98' / Y: 496437.57' C - X: 759032.34' / Y: 493796.89' D - X: 759051.37' / Y: 491157.16' E - X: 759070.39' / Y: 488517.09' F - X: 757750.23' / Y: 488501.56' G - X: 757731.58' / Y: 491142.02' H - X: 757711.79' / Y: 493781.95' I - X: 757692.25' / Y: 496422.90' J - X: 757673.14' / Y: 499063.89'	CORNER COORDINATES NAD 27, SPCS NM EAST A - X: 717810.94' / Y: 499018.31' B - X: 717830.23' / Y: 496377.33' C - X: 717849.53' / Y: 493736.72' D - X: 717868.48' / Y: 491097.08' E - X: 717887.44' / Y: 488457.07' F - X: 716567.29' / Y: 488441.55' G - X: 716548.71' / Y: 491081.93' H - X: 716528.98' / Y: 493721.78' I - X: 716509.51' / Y: 496362.66' J - X: 716490.47' / Y: 499003.58'	¹⁷ OPERATOR CERTIFICATION I hereby certify that the information contained herein is true and complete to the best of my knowledge and belief, and that this organization either owns a working interest or unleased mineral interest in the land including the proposed bottom hole location or has a right to drill this well at this location pursuant to a contract with an owner of such a mineral or working interest, or to a voluntary pooling agreement or a compulsory pooling order heretofore entered by the division. Signature: <i>Roni Mathew</i> Date: 1/25/2023 Printed Name: Roni Mathew E-mail Address: roni_mathew@oxy.com	
	SURFACE HOLE LOCATION 390' FSL 1275' FWL, SECTION 24 NAD 83, SPCS NM EAST X: 757624.76' / Y: 499453.38' LAT: 32.37112086N / LON: 103.63277664W NAD 27, SPCS NM EAST X: 716442.09' / Y: 499393.06' LAT: 32.37099768N / LON: 103.63229119W			¹⁸ SURVEYOR CERTIFICATION I hereby certify that the well location shown on this plat was plotted from field notes of actual surveys made by me or under my supervision, and that the same is true and correct to the best of my belief. DECEMBER 21, 2022 Date of Survey Signature and Seal of Professional Surveyor: <i>Lloyd P. Short</i> LLOYD P. SHORT 21653 Certificate Number
	KICK OFF POINT 300' FSL 1760' FWL, SECTION 24 NAD 83, SPCS NM EAST X: 758110.42' / Y: 499368.79' LAT: 32.37087959N / LON: 103.63120546W NAD 27, SPCS NM EAST X: 716927.75' / Y: 499308.47' LAT: 32.37075641N / LON: 103.63072007W			
	FIRST TAKE POINT 100' FNL 1760' FWL, SECTION 25 NAD 83, SPCS NM EAST X: 758113.28' / Y: 498968.79' LAT: 32.36978011N / LON: 103.63120471W NAD 27, SPCS NM EAST X: 716930.60' / Y: 498908.48' LAT: 32.36965692N / LON: 103.63071935W			
	LAST TAKE POINT 100' FSL 1760' FWL, SECTION 36 NAD 83, SPCS NM EAST X: 758189.28' / Y: 488606.73' LAT: 32.34129714N / LON: 103.63117869W NAD 27, SPCS NM EAST X: 717006.33' / Y: 488546.72' LAT: 32.34117385N / LON: 103.63069433W			
BOTTOM HOLE LOCATION 20' FSL 1760' FWL, SECTION 36 NAD 83, SPCS NM EAST X: 758189.83' / Y: 488526.73' LAT: 32.34107724N / LON: 103.63117859W NAD 27, SPCS NM EAST X: 717006.89' / Y: 488466.72' LAT: 32.34095395N / LON: 103.63069424W				

Distances/areas relative to NAD 83 Combined Scale Factor: 0.99975697 Convergence Angle: 00°04'14.40001"



OXY USA Inc

**5 Greenway Plaza, Suite 110
Houston, TX 77046-0521**

October 25, 2023

CERTIFIED MAIL – RETURN RECEIPT REQUESTED

Re: ***Application for Administrative Approval of Non-Standard Location
Stack Cats 25 36 Fed Com 24H –Red Tank, Bone Spring
Lea County, New Mexico***

To Whom it May Concern:

Enclosed is a copy of an application, filed with the New Mexico Oil Conservation Division by OXY USA Inc., requesting administrative approval for a non-standard location. As an affected party, notice is being provided to you pursuant to Rule 19.15.4.12(A)(2)(a), 19.15.15.9(A) and 19.15.16.15(B). The well is located as follows:

Surface – 890' FSL 2333' FEL Unit O Sec 24 T22S R32E
First Take Point – 100' FNL 2555' FWL Unit C Sec 25 T22S R32E
Last Take Point – 100' FSL 2555' FWL Unit N Sec36 T22S R32E
Bottom Hole – 20' FSL 2555' FWL Unit N Sec 36 T22S R32E

If you object to the well's location, you must notify the Division in writing no later than 20 days from the date the application is received by the NMOCD (1220 South St. Francis Drive, Santa Fe, NM 87505; Attention: Leonard Lowe).

If you need any additional information, me at 713-215-7295.

Thank you,

A handwritten signature in black ink that reads "Sarah McKinney".

Sarah McKinney
Regulatory Analyst Sr.
OXY USA Inc.

Application Non-Standard Location - Service List
OXY USA Inc.
Stack Cats 25 36 Fed Com 24H

Online Submission
New Mexico Oil Conservation Division
1220 South St. Francis Dr.
Santa Fe, NM 87505

Certified Mail # 7019 0700 0000 0995 4724
Bureau of Land Management Carlsbad
620 E. Greene Street
Carlsbad, NM 88220-6292

Offset Tracts, Lea County, Section 25 & 36 (T22S-R32E) - Units A, B, G, H, I, J, O, P, - East 1/2 HSU
Offset Operator/Interest Owner
OXY USA, Inc.
5 Greenway Plaza, Suite 110
Houston, TX 77046-0521

Copies of this application were mailed to the following individuals, companies and organizations
on or before October 31, 2023



Sarah McKinney, Regulatory Advisor
OXY USA Inc.

District I
1625 N. French Dr., Hobbs, NM 88240
Phone:(575) 393-6161 Fax:(575) 393-0720

District II
811 S. First St., Artesia, NM 88210
Phone:(575) 748-1283 Fax:(575) 748-9720

District III
1000 Rio Brazos Rd., Aztec, NM 87410
Phone:(505) 334-6178 Fax:(505) 334-6170

District IV
1220 S. St Francis Dr., Santa Fe, NM 87505
Phone:(505) 476-3470 Fax:(505) 476-3462

State of New Mexico
Energy, Minerals and Natural Resources
Oil Conservation Division
1220 S. St Francis Dr.
Santa Fe, NM 87505

CONDITIONS

Action 281298

CONDITIONS

Operator: OXY USA INC P.O. Box 4294 Houston, TX 772104294	OGRID: 16696
	Action Number: 281298
	Action Type: [UF-NSL] Non-Standard Location (NSL)

CONDITIONS

Created By	Condition	Condition Date
llowe	None	10/31/2023