

Revised March 23, 2017

ID NO. 300019

NSP - 2182

RECEIVED:

01/04/24

REVIEWER:

TYPE:

APP NO:

pLEL2400857118

ABOVE THIS TABLE FOR OCD DIVISION USE ONLY

NEW MEXICO OIL CONSERVATION DIVISION  
 - Geological & Engineering Bureau -  
 1220 South St. Francis Drive, Santa Fe, NM 87505



## ADMINISTRATIVE APPLICATION CHECKLIST

THIS CHECKLIST IS MANDATORY FOR ALL ADMINISTRATIVE APPLICATIONS FOR EXCEPTIONS TO DIVISION RULES AND REGULATIONS WHICH REQUIRE PROCESSING AT THE DIVISION LEVEL IN SANTA FE

Applicant: Chevron U.S.A. Inc.OGRID Number: 4323Well Name: Makers Mark & Knob CreekAPI: VariousPool: Welch; Bone SpringPool Code: 64010

SUBMIT ACCURATE AND COMPLETE INFORMATION REQUIRED TO PROCESS THE TYPE OF APPLICATION INDICATED BELOW

## 1) TYPE OF APPLICATION: Check those which apply for [A]

A. Location - Spacing Unit - Simultaneous Dedication

☐ NSL☐ NSP (PROJECT AREA)☒ NSP (PRORATION UNIT)☐ SD

B. Check one only for [ I ] or [ II ]

[ I ] Commingling - Storage - Measurement

☐ DHC☐ CTB☐ PLC☐ PC☐ OLS☐ OLM

[ II ] Injection - Disposal - Pressure Increase - Enhanced Oil Recovery

☐ WFX☐ PMX☐ SWD☐ IPI☐ EOR☐ PPR

## 2) NOTIFICATION REQUIRED TO: Check those which apply.

A. ☒ Offset operators or lease holdersB. ☐ Royalty, overriding royalty owners, revenue ownersC. ☐ Application requires published noticeD. ☒ Notification and/or concurrent approval by SLOE. ☒ Notification and/or concurrent approval by BLMF. ☐ Surface ownerG. ☒ For all of the above, proof of notification or publication is attached, and/or,H. ☐ No notice required

## FOR OCD ONLY

☐

Notice Complete

☐Application  
Content  
Complete

3) CERTIFICATION: I hereby certify that the information submitted with this application for administrative approval is **accurate** and **complete** to the best of my knowledge. I also understand that **no action** will be taken on this application until the required information and notifications are submitted to the Division.

Note: Statement must be completed by an individual with managerial and/or supervisory capacity.

Deana M. Bennett

Print or Type Name

s/ Deana M. Bennett

Signature

01/04/2023

Date

505-848-1834

Phone Number

deana.bennett@modrall.com

e-mail Address



MODRALL SPERLING

L A W Y E R S

**VIA ELECTRONIC FILING**

January 4, 2024

Director Dylan Fuge and OCD Engineering Bureau  
 Oil Conservation Division  
 Energy, Minerals and  
 Natural Resources Department  
 1220 South Saint Francis Drive  
 Santa Fe, New Mexico 87505

Earl E. DeBrine  
 505.848.1810  
 edebrine@modrall.com

Deana M. Bennett  
 505.848.1834  
 Deana.bennett@modrall.com

**Re: Application of Chevron U.S.A. Inc. For administrative approval of a 2,560-acre, more or less, nonstandard spacing unit in the Bone Spring formation comprised of Sections 5, 8, 17, and 20, Township 26 South, Range 27 East, Eddy County.**

Dear Director Fuge/OCD Engineering Bureau:

Chevron U.S.A. Inc. ("Chevron"), OGRID number 4323, respectfully requests administrative approval of a 2560-acre, more or less, non-standard unit ("NSU") comprised of Sections 5, 8, 17, and 20, Township 26 South, Range 27 East, Eddy County, New Mexico.

The wells proposed to be dedicated to this NSU are:

<b><u>Well Name</u></b>	<b><u>API Number</u></b>
Makers Mark 8 5 Fed Com 1H	30-015-49616
Makers Mark 8 5 Fed Com 2H	30-015-49615
Makers Mark 8 5 Fed Com 3H	30-015-49617
Makers Mark 8 5 Fed Com 4H	30-015-49618
Makers Mark 8 5 Fed Com 5H	30-015-49619
Knob Creek 17 20 Fed Com 1H*	Pending
Knob Creek 17 20 Fed Com 2H*	Pending
Knob Creek 17 20 Fed Com 3H*	Pending
Knob Creek 17 20 Fed Com 4H*	Pending

\*Final well name subject to change

C-102s for each well are attached hereto as **Exhibit A**. The pool and pool code is Welch; Bone Spring (64010), which follows the state wide rules. Each well will comply with the statewide setback requirements for the non-standard spacing

Modrall Sperling  
 Roehl Harris & Sisk P.A.

500 Fourth Street NW  
 Suite 1000  
 Albuquerque,  
 New Mexico 87102

PO Box 2168  
 Albuquerque,  
 New Mexico 87103-2168

Tel: 505.848.1800  
 www.modrall.com

Page 2

unit. The C-102s identify the dedicated acreage as 640 acres and Chevron will provide updated C-102s to reflect 2,560 acres if the NSU is approved.

Chevron is requesting this NSU for several reasons. First, approval of the NSU will allow for efficient development and will minimize surface disturbance by allowing Chevron to consolidate facilities and commingle production from wells in the proposed NSU. Second, Chevron is requesting approval of a Bone Spring NSU to match Chevron's existing Wolfcamp 2,560-acre Communitization Agreement. As discussed in the letter from Chevron's reservoir engineer, the Bureau of Land Management has indicated that it can approve a 2,560-acre communitization agreement for the Bone Spring, if there is a matching OCD approved NSU. Accordingly, approval of this administrative application will allow for full development of the communitized acreage, promote efficiently located surface facilities, reduce surface disturbance, consolidate roads, tanks and pipelines; and promote effective well spacing.

A tract map is attached hereto as **Exhibit B**, which compares and contrasts the standard versus non-standard unit scenario and identifies the approximate Well locations.

**Exhibit C** is a letter from reservoir engineer explaining the need for a non-standard unit and the benefits associated with a non-standard, as opposed to standard, unit. Exhibit C includes two attachments that compare and contrast the standard versus non-standard unit scenario.

Chevron is providing notice to all affected parties in the tracts that adjoin the proposed non-standard spacing unit and to the State Land Office and the Bureau of Land Management. A chart identifying the offset affected parties, as well as proof of mailing notice of the application (including a copy of the application) to affected persons entitled to notice is attached hereto as **Exhibit D**. Also included in Exhibit D is a map identifying the affected tracts and ownership for notice purposes.

Your attention to this matter is appreciated.

Sincerely,

A handwritten signature in blue ink that reads "Deana M. Bennett". The signature is written in a cursive style and is positioned above a horizontal line.

Earl E. DeBrine  
Deana M. Bennett  
*Attorneys for Chevron U.S.A. Inc.*

## District I

1625 N. French Dr., Hobbs, NM 88240  
Phone: (575) 393-6161 Fax: (575) 393-0720

## District II

811 S. First St., Artesia, NM 88210  
Phone: (575) 748-1283 Fax: (575) 748-9720

## District III

1000 Rio Brazos Road, Aztec, NM 87410  
Phone: (505) 334-6178 Fax: (505) 334-6170

## District IV

1220 S. St. Francis Dr., Santa Fe, NM 87505  
Phone: (505) 476-3460 Fax: (505) 476-3462

State of New Mexico  
Energy, Minerals & Natural Resources Department  
OIL CONSERVATION DIVISION  
1220 South St. Francis Dr.  
Santa Fe, NM 87505

Form C-102

Revised August 1, 2011

Submit one copy to appropriate

District Office

☐ AMENDED REPORT

## WELL LOCATION AND ACREAGE DEDICATION PLAT

<sup>1</sup> API Number	<sup>2</sup> Pool Code 64010	<sup>3</sup> Pool Name WELCH: BONE SPRING
<sup>4</sup> Property Code	<sup>5</sup> Property Name MAKERS MARK 8 5 FED COM 27	<sup>6</sup> Well Number 1H
<sup>7</sup> OGRID No. 4323	<sup>8</sup> Operator Name CHEVRON U.S.A. INC.	<sup>9</sup> Elevation 3260'

<sup>10</sup> Surface Location

UL or lot no.	Section	Township	Range	Lot Idn	Feet from the	North/South line	Feet from the	East/West line	County
B	17	26 SOUTH	27 EAST, N.M.P.M.		775'	NORTH	2614'	EAST	EDDY

<sup>11</sup> Bottom Hole Location If Different From Surface

UL or lot no.	Section	Township	Range	Lot Idn	Feet from the	North/South line	Feet from the	East/West line	County
D	5	26 SOUTH	27 EAST, N.M.P.M.		25'	NORTH	330'	WEST	EDDY

<sup>12</sup> Dedicated Acres 640	<sup>13</sup> Joint or Infill	<sup>14</sup> Consolidation Code	<sup>15</sup> Order No.
--------------------------------------	-------------------------------	----------------------------------	-------------------------

No allowable will be assigned to this completion until all interests have been consolidated or a non-standard unit has been approved by the division.

<p><b>PROPOSED LAST TAKE POINT</b></p> <p>X= 535,284' Y= 392,343' LAT. 32.078615° N LONG. 104.219413° W NAD 27</p> <p>X= 576,468' Y= 392,400' LAT. 32.078736° N LONG. 104.219908° W NAD83/86</p> <p><b>PROPOSED MID POINT</b></p> <p>X= 535,265' Y= 387,142' LAT. 32.064317° N LONG. 104.219493° W NAD 27</p> <p>X= 576,449' Y= 387,199' LAT. 32.064438° N LONG. 104.219987° W NAD83/86</p> <p><b>PROPOSED FIRST TAKE POINT</b></p> <p>X= 535,317' Y= 381,910' LAT. 32.049935° N LONG. 104.219343° W NAD 27</p> <p>X= 576,501' Y= 381,967' LAT. 32.050057° N LONG. 104.219837° W NAD83/86</p>	<p><b>PROPOSED BOTTOM HOLE LOCATION</b></p> <p>X= 535,285' Y= 392,418' LAT. 32.078821° N LONG. 104.219412° W NAD 27</p> <p>X= 576,468' Y= 392,475' LAT. 32.078942° N LONG. 104.219907° W NAD83/86</p> <p><b>CORNER COORDINATES TABLE (NAD 27)</b></p> <p>A - Y=392442.33, X=534954.83 B - Y=392444.24, X=536280.85 C - Y=392446.14, X=537606.87 D - Y=392449.96, X=540258.92 E - Y=387143.09, X=534935.36 F - Y=387137.83, X=536254.75 G - Y=387132.57, X=537574.15 H - Y=387122.04, X=540212.94 I - Y=381810.94, X=534988.20 J - Y=381808.02, X=536317.14 K - Y=381805.09, X=537646.07 L - Y=381799.23, X=540303.95 M - Y=376480.27, X=535066.16 N - Y=376474.90, X=540354.10</p> <p><b>MAKERS MARK 8 5 FED COM 27 NO. 1H WELL</b></p> <p>X= 537,697' Y= 381,030' LAT. 32.047509° N LONG. 104.211665° W NAD 27</p> <p>X= 578,881' Y= 381,087' LAT. 32.047631° N LONG. 104.212159° W NAD83/86</p> <p>ELEV. +3260' NAVD88</p>		<p><b><sup>17</sup> OPERATOR CERTIFICATION</b></p> <p>I hereby certify that the information contained herein is true and complete to the best of my knowledge and belief, and that this organization either owns a working interest or unleased mineral interest in the land including the proposed bottom hole location or has a right to drill this well at this location pursuant to a contract with an owner of such a mineral or working interest, or to a voluntary pooling agreement or a compulsory pooling order heretofore entered by the division.</p> <p>Signature _____ Date _____</p> <p>Printed Name _____</p> <p>E-mail Address _____</p> <p><b><sup>18</sup> SURVEYOR CERTIFICATION</b></p> <p>I hereby certify that the well location shown on this plat was plotted from field notes of actual surveys made by me or under my supervision, and that the same is true and correct to the best of my belief.</p> <p>07/14/2021 Date of Survey</p> <p>Signature and Seal of Professional Surveyor: </p> <p>Certificate Number _____ 08/05/2021</p>
---	--	--	--

EXHIBIT

A



## District I

1625 N. French Dr., Hobbs, NM 88240  
Phone: (575) 393-6161 Fax: (575) 393-0720

## District II

811 S. First St., Artesia, NM 88210  
Phone: (575) 748-1283 Fax: (575) 748-9720

## District III

1000 Rio Brazos Road, Aztec, NM 87410  
Phone: (505) 334-6178 Fax: (505) 334-6170

## District IV

1220 S. St. Francis Dr., Santa Fe, NM 87505  
Phone: (505) 476-3460 Fax: (505) 476-3462

State of New Mexico  
Energy, Minerals & Natural Resources Department  
OIL CONSERVATION DIVISION  
1220 South St. Francis Dr.  
Santa Fe, NM 87505

Form C-102

Revised August 1, 2011

Submit one copy to appropriate

District Office

☐ AMENDED REPORT

## WELL LOCATION AND ACREAGE DEDICATION PLAT

<sup>1</sup> API Number	<sup>2</sup> Pool Code 64010	<sup>3</sup> Pool Name WELCH: BONE SPRING
<sup>4</sup> Property Code	<sup>5</sup> Property Name MAKERS MARK 8 5 FED COM 27	<sup>6</sup> Well Number 2H
<sup>7</sup> OGRID No. 4323	<sup>8</sup> Operator Name CHEVRON U.S.A. INC.	<sup>9</sup> Elevation 3259'

<sup>10</sup> Surface Location

UL or lot no.	Section	Township	Range	Lot Idn	Feet from the	North/South line	Feet from the	East/West line	County
B	17	26 SOUTH	27 EAST, N.M.P.M.		750'	NORTH	2614'	EAST	EDDY

<sup>11</sup> Bottom Hole Location If Different From Surface

UL or lot no.	Section	Township	Range	Lot Idn	Feet from the	North/South line	Feet from the	East/West line	County
C	5	26 SOUTH	27 EAST, N.M.P.M.		25'	NORTH	1380'	WEST	EDDY

<sup>12</sup> Dedicated Acres 640	<sup>13</sup> Joint or Infill	<sup>14</sup> Consolidation Code	<sup>15</sup> Order No.
--------------------------------------	-------------------------------	----------------------------------	-------------------------

No allowable will be assigned to this completion until all interests have been consolidated or a non-standard unit has been approved by the division.

<p><b>16</b></p> <p><b>PROPOSED LAST TAKE POINT</b></p> <p>X= 536,334' Y= 392,344' LAT. 32.078616° N LONG. 104.216023° W NAD 27</p> <p>X= 577,518' Y= 392,401' LAT. 32.078737° N LONG. 104.216518° W NAD83/86</p> <p><b>PROPOSED MID POINT</b></p> <p>X= 536,315' Y= 387,138' LAT. 32.064302° N LONG. 104.216103° W NAD 27</p> <p>X= 577,499' Y= 387,195' LAT. 32.064424° N LONG. 104.216597° W NAD83/86</p> <p><b>PROPOSED FIRST TAKE POINT</b></p> <p>X= 536,367' Y= 381,908' LAT. 32.049925° N LONG. 104.215954° W NAD 27</p> <p>X= 577,551' Y= 381,965' LAT. 32.050047° N LONG. 104.216448° W NAD83/86</p>	<p><b>PROPOSED BOTTOM HOLE LOCATION</b></p> <p>X= 536,335' Y= 392,419' LAT. 32.078622° N LONG. 104.216022° W NAD 27</p> <p>X= 577,518' Y= 392,476' LAT. 32.078943° N LONG. 104.216517° W NAD83/86</p> <p><b>CORNER COORDINATES TABLE (NAD 27)</b></p> <p>A - Y=392442.33, X=534954.83 B - Y=392444.24, X=536280.85 C - Y=392446.14, X=537606.87 D - Y=392449.96, X=540258.92 E - Y=387143.09, X=534935.36 F - Y=387137.83, X=536254.75 G - Y=387132.57, X=537574.15 H - Y=387122.04, X=540212.94 I - Y=381810.94, X=534988.20 J - Y=381808.02, X=536317.14 K - Y=381805.09, X=537646.07 L - Y=381799.23, X=540303.95 M - Y=376480.27, X=535066.16 N - Y=376474.90, X=540354.10</p> <p><b>MAKERS MARK 8 5 FED COM 27 NO. 2H WELL</b></p> <p>X= 537,697' Y= 381,055' LAT. 32.047578° N LONG. 104.211665° W NAD 27</p> <p>X= 578,881' Y= 381,112' LAT. 32.047700° N LONG. 104.212158° W NAD83/86</p> <p>ELEV. +3259' NAVD88</p>		<p><b>17 OPERATOR CERTIFICATION</b></p> <p>I hereby certify that the information contained herein is true and complete to the best of my knowledge and belief, and that this organization either owns a working interest or unleased mineral interest in the land including the proposed bottom hole location or has a right to drill this well at this location pursuant to a contract with an owner of such a mineral or working interest, or to a voluntary pooling agreement or a compulsory pooling order heretofore entered by the division.</p> <p>Signature _____ Date _____</p> <p>Printed Name _____</p> <p>E-mail Address _____</p> <p><b>18 SURVEYOR CERTIFICATION</b></p> <p>I hereby certify that the well location shown on this plat was plotted from field notes of actual surveys made by me or under my supervision, and that the same is true and correct to the best of my belief.</p> <p>07/14/2021 Date of Survey</p> <p>Signature and Seal of Professional Surveyor: </p> <p>Certificate Number _____ 08/05/2021</p>
--	--	--	--

## District I

1625 N. French Dr., Hobbs, NM 88240  
Phone: (575) 393-6161 Fax: (575) 393-0720

## District II

811 S. First St., Artesia, NM 88210  
Phone: (575) 748-1283 Fax: (575) 748-9720

## District III

1000 Rio Brazos Road, Aztec, NM 87410  
Phone: (505) 334-6178 Fax: (505) 334-6170

## District IV

1220 S. St. Francis Dr., Santa Fe, NM 87505  
Phone: (505) 476-3460 Fax: (505) 476-3462

State of New Mexico  
Energy, Minerals & Natural Resources Department  
**OIL CONSERVATION DIVISION**  
1220 South St. Francis Dr.  
Santa Fe, NM 87505

Form C-102

Revised August 1, 2011

Submit one copy to appropriate

District Office

☐ AMENDED REPORT

## WELL LOCATION AND ACREAGE DEDICATION PLAT

<sup>1</sup> API Number	<sup>2</sup> Pool Code 64010	<sup>3</sup> Pool Name WELCH: BONE SPRING
<sup>4</sup> Property Code	<sup>5</sup> Property Name MAKERS MARK 8 5 FED COM 27	<sup>6</sup> Well Number 3H
<sup>7</sup> OGRID No. 4323	<sup>8</sup> Operator Name CHEVRON U.S.A. INC.	<sup>9</sup> Elevation 3258'

<sup>10</sup> Surface Location


UL or lot no.	Section	Township	Range	Lot Idn	Feet from the	North/South line	Feet from the	East/West line	County
B	17	26 SOUTH	27 EAST, N.M.P.M.		725'	NORTH	2614'	EAST	EDDY

<sup>11</sup> Bottom Hole Location If Different From Surface

UL or lot no.	Section	Township	Range	Lot Idn	Feet from the	North/South line	Feet from the	East/West line	County
C	5	26 SOUTH	27 EAST, N.M.P.M.		25'	NORTH	2310'	WEST	EDDY

<sup>12</sup> Dedicated Acres 640	<sup>13</sup> Joint or Infill	<sup>14</sup> Consolidation Code	<sup>15</sup> Order No.
--------------------------------------	-------------------------------	----------------------------------	-------------------------

No allowable will be assigned to this completion until all interests have been consolidated or a non-standard unit has been approved by the division.

<p><b>PROPOSED LAST TAKE POINT</b></p> <p>X= 537,264' Y= 392,346' LAT. 32.078617° N LONG. 104.213021° W NAD 27</p> <p>X= 578,448' Y= 392,403' LAT. 32.078738° N LONG. 104.213515° W NAD83/86</p> <p><b>PROPOSED MID POINT</b></p> <p>X= 537,246' Y= 387,134' LAT. 32.064289° N LONG. 104.213100° W NAD 27</p> <p>X= 578,429' Y= 387,191' LAT. 32.064411° N LONG. 104.213595° W NAD83/86</p> <p><b>PROPOSED FIRST TAKE POINT</b></p> <p>X= 537,297' Y= 381,906' LAT. 32.049917° N LONG. 104.212952° W NAD 27</p> <p>X= 578,481' Y= 381,963' LAT. 32.050039° N LONG. 104.213446° W NAD83/86</p>	<p><b>PROPOSED BOTTOM HOLE LOCATION</b></p> <p>X= 537,265' Y= 392,421' LAT. 32.078823° N LONG. 104.213019° W NAD 27</p> <p>X= 578,448' Y= 392,478' LAT. 32.078944° N LONG. 104.213514° W NAD83/86</p> <p><b>CORNER COORDINATES TABLE (NAD 27)</b></p> <p>A - Y=392442.33, X=534954.83 B - Y=392444.24, X=536280.85 C - Y=392446.14, X=537606.87 D - Y=392449.96, X=540258.92 E - Y=387143.09, X=534935.36 F - Y=387137.83, X=536254.75 G - Y=387132.57, X=537574.15 H - Y=387122.04, X=540212.94 I - Y=381810.94, X=534988.20 J - Y=381808.02, X=536317.14 K - Y=381805.09, X=537646.07 L - Y=381799.23, X=540303.95 M - Y=376480.27, X=535066.16 N - Y=376474.90, X=540354.10</p> <p><b>MAKERS MARK 8 5 FED COM 27 NO. 3H WELL</b></p> <p>X= 537,697' Y= 381,080' LAT. 32.047647° N LONG. 104.211665° W NAD 27</p> <p>X= 578,881' Y= 381,137' LAT. 32.047768° N LONG. 104.212158° W NAD83/86</p> <p>ELEV. +3258' NAVD88</p>		<p><b><sup>17</sup> OPERATOR CERTIFICATION</b></p> <p>I hereby certify that the information contained herein is true and complete to the best of my knowledge and belief, and that this organization either owns a working interest or unleased mineral interest in the land including the proposed bottom hole location or has a right to drill this well at this location pursuant to a contract with an owner of such a mineral or working interest, or to a voluntary pooling agreement or a compulsory pooling order heretofore entered by the division.</p> <p>Signature _____ Date _____</p> <p>Printed Name _____</p> <p>E-mail Address _____</p> <p><b><sup>18</sup> SURVEYOR CERTIFICATION</b></p> <p>I hereby certify that the well location shown on this plat was plotted from field notes of actual surveys made by me or under my supervision, and that the same is true and correct to the best of my belief.</p> <p>07/14/2021 Date of Survey</p> <p>Signature and Seal of Professional Surveyor or: </p> <p>Certificate Number _____ 08/05/2021</p>
---	--	--	--

District I  
1625 N. French Dr., Hobbs, NM 88240  
Phone: (575) 393-6161 Fax: (575) 393-0720

District II  
811 S. First St., Artesia, NM 88210  
Phone: (575) 748-1283 Fax: (575) 748-9720

District III  
1000 Rio Brazos Road, Aztec, NM 87410  
Phone: (505) 334-6178 Fax: (505) 334-6170

District IV  
1220 S. St. Francis Dr., Santa Fe, NM 87505  
Phone: (505) 476-3460 Fax: (505) 476-3462

State of New Mexico  
Energy, Minerals & Natural Resources Department  
OIL CONSERVATION DIVISION  
1220 South St. Francis Dr.  
Santa Fe, NM 87505

Form C-102  
Revised August 1, 2011  
Submit one copy to appropriate  
District Office

☐ AMENDED REPORT

WELL LOCATION AND ACREAGE DEDICATION PLAT

<sup>1</sup> API Number	<sup>2</sup> Pool Code 64010	<sup>3</sup> Pool Name WELCH: BONE SPRING
<sup>4</sup> Property Code	<sup>5</sup> Property Name MAKERS MARK 8 5 FED COM 27	<sup>6</sup> Well Number 4H
<sup>7</sup> OGRID No. 4323	<sup>8</sup> Operator Name CHEVRON U.S.A. INC.	<sup>9</sup> Elevation 3257'

<sup>10</sup> Surface Location

UL or lot no.	Section	Township	Range	Lot Idn	Feet from the	North/South line	Feet from the	East/West line	County
B	17	26 SOUTH	27 EAST, N.M.P.M.		700'	NORTH	2613'	EAST	EDDY

<sup>11</sup> Bottom Hole Location If Different From Surface

UL or lot no.	Section	Township	Range	Lot Idn	Feet from the	North/South line	Feet from the	East/West line	County
B	5	26 SOUTH	27 EAST, N.M.P.M.		25'	NORTH	1585'	EAST	EDDY

<sup>12</sup> Dedicated Acres	<sup>13</sup> Joint or Infill	<sup>14</sup> Consolidation Code	<sup>15</sup> Order No.
640			

No allowable will be assigned to this completion until all interests have been consolidated or a non-standard unit has been approved by the division.

<p><b>PROPOSED LAST TAKE POINT</b></p> <p>X= 538,673' Y= 392,348' LAT. 32.078618° N LONG. 104.208473° W</p> <p>X= 579,857' Y= 392,405' LAT. 32.078739° N LONG. 104.208967° W</p> <p><b>PROPOSED MID POINT</b></p> <p>X= 538,628' Y= 387,128' LAT. 32.064270° N LONG. 104.208638° W</p> <p>X= 579,812' Y= 387,185' LAT. 32.064391° N LONG. 104.209132° W</p> <p><b>PROPOSED FIRST TAKE POINT</b></p> <p>X= 538,717' Y= 381,903' LAT. 32.049804° N LONG. 104.208370° W</p> <p>X= 579,901' Y= 381,960' LAT. 32.050026° N LONG. 104.208864° W</p>	<p><b>PROPOSED BOTTOM HOLE LOCATION</b></p> <p>X= 538,674' Y= 392,423' LAT. 32.078824° N LONG. 104.208471° W</p> <p>X= 579,857' Y= 392,480' LAT. 32.078946° N LONG. 104.208965° W</p> <p><b>CORNER COORDINATES TABLE (NAD 27)</b></p> <p>A - Y=392442.33, X=534954.83 B - Y=392446.14, X=537606.87 C - Y=392448.05, X=538932.89 D - Y=392449.96, X=540258.92 E - Y=387143.09, X=534935.36 F - Y=387132.57, X=537574.15 G - Y=387127.30, X=538893.54 H - Y=387122.04, X=540212.94 I - Y=381810.94, X=534988.20 J - Y=381805.09, X=537646.07 K - Y=381802.16, X=538975.01 L - Y=381799.23, X=540303.95 M - Y=376480.27, X=535066.16 N - Y=376474.90, X=540354.10</p> <p><b>MAKERS MARK 8 5 FED COM 27 NO. 4H WELL</b></p> <p>X= 537,697' Y= 381,105' LAT. 32.047715° N LONG. 104.211665° W</p> <p>X= 578,881' Y= 381,162' LAT. 32.047837° N LONG. 104.212158° W</p> <p>ELEV. +3257' NAVD83</p>		<p><b><sup>17</sup> OPERATOR CERTIFICATION</b></p> <p>I hereby certify that the information contained herein is true and complete to the best of my knowledge and belief, and that this organization either owns a working interest or unleased mineral interest in the land including the proposed bottom hole location or has a right to drill this well at this location pursuant to a contract with an owner of such a mineral or working interest, or to a voluntary pooling agreement or a compulsory pooling order heretofore entered by the division.</p> <p>Signature _____ Date _____</p> <p>Printed Name _____</p> <p>E-mail Address _____</p> <p><b><sup>18</sup> SURVEYOR CERTIFICATION</b></p> <p>I hereby certify that the well location shown on this plat was plotted from field notes of actual surveys made by me or under my supervision, and that the same is true and correct to the best of my belief.</p> <p>07/14/2021 Date of Survey</p> <p>Signature and Seal of Professional Surveyor: </p> <p>Certificate Number _____ 08/05/2021</p>
---	--	--	--



District I  
1625 N. French Dr., Hobbs, NM 88240  
Phone: (575) 393-6161 Fax: (575) 393-0720  
District II  
811 S. First St., Artesia, NM 88210  
Phone: (575) 748-1283 Fax: (575) 748-9720  
District III  
1000 Rio Brazos Road, Aztec, NM 87410  
Phone: (505) 334-6178 Fax: (505) 334-6170  
District IV  
1220 S. St. Francis Dr., Santa Fe, NM 87505  
Phone: (505) 476-3460 Fax: (505) 476-3462

State of New Mexico  
Energy, Minerals & Natural Resources Department  
OIL CONSERVATION DIVISION  
1220 South St. Francis Dr.  
Santa Fe, NM 87505

Form C-102  
Revised August 1, 2011  
Submit one copy to appropriate  
District Office  
☐ AMENDED REPORT

## WELL LOCATION AND ACREAGE DEDICATION PLAT

<sup>1</sup> API Number	<sup>2</sup> Pool Code 64010	<sup>3</sup> Pool Name WELCH: BONE SPRING
<sup>4</sup> Property Code	<sup>5</sup> Property Name MAKERS MARK 8 5 FED COM 27	<sup>6</sup> Well Number 5H
<sup>7</sup> OGRID No. 4323	<sup>8</sup> Operator Name CHEVRON U.S.A. INC.	<sup>9</sup> Elevation 3257'

<sup>10</sup> Surface Location

UL or lot no.	Section	Township	Range	Lot Idn	Feet from the	North/South line	Feet from the	East/West line	County
B	17	26 SOUTH	27 EAST, N.M.P.M.		675'	NORTH	2613'	EAST	EDDY

<sup>11</sup> Bottom Hole Location If Different From Surface

UL or lot no.	Section	Township	Range	Lot Idn	Feet from the	North/South line	Feet from the	East/West line	County
A	5	26 SOUTH	27 EAST, N.M.P.M.		25'	NORTH	530'	EAST	EDDY

<sup>12</sup> Dedicated Acres	<sup>13</sup> Joint or Infill	<sup>14</sup> Consolidation Code	<sup>15</sup> Order No.
640			

No allowable will be assigned to this completion until all interests have been consolidated or a non-standard unit has been approved by the division.

<p><b>PROPOSED LAST TAKE POINT</b></p> <p>X= 539,728' Y= 392,349' LAT. 32.078619° N LONG. 104.205067° W NAD 27</p> <p>X= 580,912' Y= 392,406' LAT. 32.078740° N LONG. 104.205561° W NAD83/86</p> <p><b>PROPOSED MID POINT</b></p> <p>X= 539,683' Y= 387,124' LAT. 32.064255° N LONG. 104.205232° W NAD 27</p> <p>X= 580,867' Y= 387,181' LAT. 32.064377° N LONG. 104.205726° W NAD83/86</p> <p><b>PROPOSED FIRST TAKE POINT</b></p> <p>X= 539,772' Y= 381,900' LAT. 32.049894° N LONG. 104.204984° W NAD 27</p> <p>X= 580,956' Y= 381,957' LAT. 32.050016° N LONG. 104.205458° W NAD83/86</p>	<p><b>PROPOSED BOTTOM HOLE LOCATION</b></p> <p>X= 539,729' Y= 392,424' LAT. 32.078825° N LONG. 104.205064° W NAD 27</p> <p>X= 580,912' Y= 392,481' LAT. 32.078946° N LONG. 104.205558° W NAD83/86</p> <p><b>CORNER COORDINATES TABLE (NAD 27)</b></p> <p>A - Y=392442.33, X=534954.83 B - Y=392446.14, X=537606.87 C - Y=392448.05, X=538932.89 D - Y=392449.96, X=540258.92 E - Y=387143.09, X=534935.36 F - Y=387132.57, X=537574.15 G - Y=387127.30, X=538893.54 H - Y=387122.04, X=540212.94 I - Y=381810.94, X=534988.20 J - Y=381805.09, X=537646.07 K - Y=381802.16, X=538975.01 L - Y=381799.23, X=540303.95 M - Y=376480.27, X=535066.16 N - Y=376474.90, X=540354.10</p> <p><b>MAKERS MARK 8 5 FED COM 27 NO. 5H WELL</b></p> <p>X= 537,697' Y= 381,130' LAT. 32.047784° N LONG. 104.211665° W NAD 27</p> <p>X= 578,881' Y= 381,187' LAT. 32.047906° N LONG. 104.212158° W NAD83/86</p> <p>ELEV. +3257' NAVD83</p>		<p><b><sup>17</sup> OPERATOR CERTIFICATION</b></p> <p>I hereby certify that the information contained herein is true and complete to the best of my knowledge and belief, and that this organization either owns a working interest or unleased mineral interest in the land including the proposed bottom hole location or has a right to drill this well at this location pursuant to a contract with an owner of such a mineral or working interest, or to a voluntary pooling agreement or a compulsory pooling order heretofore entered by the division.</p> <p>Signature _____ Date _____</p> <p>Printed Name _____</p> <p>E-mail Address _____</p> <p><b><sup>18</sup> SURVEYOR CERTIFICATION</b></p> <p>I hereby certify that the well location shown on this plat was plotted from field notes of actual surveys made by me or under my supervision, and that the same is true and correct to the best of my belief.</p> <p>07/14/2021 Date of Survey</p> <p>Signature and Seal of Professional Surveyor: </p> <p>Certificate Number _____ 08/05/2021</p>
---	--	--	--

District I  
1625 N. French Dr., Hobbs, NM 88240  
Phone: (575) 393-6161 Fax: (575) 393-0720

District II  
811 S. First St., Artesia, NM 88210  
Phone: (575) 748-1283 Fax: (575) 748-9720

District III  
1000 Rio Brazos Road, Aztec, NM 87410  
Phone: (505) 334-6178 Fax: (505) 334-6170

District IV  
1220 S. St. Francis Dr., Santa Fe, NM 87505  
Phone: (505) 476-3460 Fax: (505) 476-3462

State of New Mexico  
Energy, Minerals & Natural Resources Department  
OIL CONSERVATION DIVISION  
1220 South St. Francis Dr.  
Santa Fe, NM 87505

Form C-102  
Revised August 1, 2011  
Submit one copy to appropriate  
District Office  
☐ AMENDED REPORT

## WELL LOCATION AND ACREAGE DEDICATION PLAT

<sup>1</sup> API Number	<sup>2</sup> Pool Code 64010	<sup>3</sup> Pool Name WELCH; BONE SPRING
<sup>4</sup> Property Code	<sup>5</sup> Property Name KNOB CREEK 17 20 FED COM 33	<sup>6</sup> Well Number 1H
<sup>7</sup> OGRID No. 4323	<sup>8</sup> Operator Name CHEVRON U.S.A. INC.	<sup>9</sup> Elevation 3238'

<sup>10</sup> Surface Location

UL or lot no.	Section	Township	Range	Lot Idn	Feet from the	North/South line	Feet from the	East/West line	County
O	8	26 SOUTH	27 EAST, N.M.P.M.		211'	SOUTH	2574'	EAST	EDDY

<sup>11</sup> Bottom Hole Location If Different From Surface

UL or lot no.	Section	Township	Range	Lot Idn	Feet from the	North/South line	Feet from the	East/West line	County
M	20	26 SOUTH	27 EAST, N.M.P.M.		25'	SOUTH	530'	WEST	EDDY

<sup>12</sup> Dedicated Acres 640	<sup>13</sup> Joint or Infill	<sup>14</sup> Consolidation Code	<sup>15</sup> Order No.
--------------------------------------	-------------------------------	----------------------------------	-------------------------

No allowable will be assigned to this completion until all interests have been consolidated or a non-standard unit has been approved by the division.

<p><b>PROPOSED FIRST TAKE POINT</b></p> <p>X= 535,520' Y= 381,710' NAD 27 LAT. 32.049383° N LONG. 104.218690° W</p> <p>X= 576,703' Y= 381,767' NAD83/86 LAT. 32.049505° N LONG. 104.219184° W</p>	<p>KNOB CREEK 17 20 FED COM 33 NO. 1H WELL</p> <p>X= 537,726' Y= 382,016' NAD 27 LAT. 32.050220° N LONG. 104.211570° W</p> <p>X= 578,909' Y= 382,073' NAD83/86 LAT. 32.050341° N LONG. 104.212063° W</p> <p>ELEV. +3238' NAVD88</p>		<p><b><sup>17</sup> OPERATOR CERTIFICATION</b></p> <p>I hereby certify that the information contained herein is true and complete to the best of my knowledge and belief, and that this organization either owns a working interest or unleased mineral interest in the land including the proposed bottom hole location or has a right to drill this well at this location pursuant to a contract with an owner of such a mineral or working interest, or to a voluntary pooling agreement or a compulsory pooling order heretofore entered by the division.</p> <p>Signature _____ Date _____</p> <p>Printed Name _____</p> <p>E-mail Address _____</p> <p><b>SURVEYOR CERTIFICATION</b></p> <p>I hereby certify that the well location shown on this plat was plotted from field notes of actual surveys made by me or under my supervision, and that the same is true and correct to the best of my belief.</p> <p>07/20/2021 Date of Survey</p> <p>Signature and Seal of Professional Surveyor _____</p> <p><b>ROBERT L. LASTRAPES</b> NEW MEXICO 23006 10/22/2021</p> <p>Certificate Number _____</p>
---	---	--	---

District I  
1625 N. French Dr., Hobbs, NM 88240  
Phone: (575) 393-6161 Fax: (575) 393-0720

District II  
811 S. First St., Artesia, NM 88210  
Phone: (575) 748-1283 Fax: (575) 748-9720

District III  
1000 Rio Brazos Road, Aztec, NM 87410  
Phone: (505) 334-6178 Fax: (505) 334-6170

District IV  
1220 S. St. Francis Dr., Santa Fe, NM 87505  
Phone: (505) 476-3460 Fax: (505) 476-3462

State of New Mexico  
Energy, Minerals & Natural Resources Department  
OIL CONSERVATION DIVISION  
1220 South St. Francis Dr.  
Santa Fe, NM 87505

Form C-102  
Revised August 1, 2011  
Submit one copy to appropriate  
District Office  
☐ AMENDED REPORT

## WELL LOCATION AND ACREAGE DEDICATION PLAT

<sup>1</sup> API Number	<sup>2</sup> Pool Code 64010	<sup>3</sup> Pool Name WELCH; BONE SPRING
<sup>4</sup> Property Code	<sup>5</sup> Property Name KNOB CREEK 17 20 FED COM 33	<sup>6</sup> Well Number 2H
<sup>7</sup> OGRID No. 4323	<sup>8</sup> Operator Name CHEVRON U.S.A. INC.	<sup>9</sup> Elevation 3239'

<sup>10</sup> Surface Location

UL or lot no.	Section	Township	Range	Lot Idn	Feet from the	North/South line	Feet from the	East/West line	County
O	8	26 SOUTH	27 EAST, N.M.P.M.		186'	SOUTH	2575'	EAST	EDDY

<sup>11</sup> Bottom Hole Location If Different From Surface

UL or lot no.	Section	Township	Range	Lot Idn	Feet from the	North/South line	Feet from the	East/West line	County
N	20	26 SOUTH	27 EAST, N.M.P.M.		25'	SOUTH	1585'	WEST	EDDY

<sup>12</sup> Dedicated Acres 640	<sup>13</sup> Joint or Infill	<sup>14</sup> Consolidation Code	<sup>15</sup> Order No.
--------------------------------------	-------------------------------	----------------------------------	-------------------------

No allowable will be assigned to this completion until all interests have been consolidated or a non-standard unit has been approved by the division.

<sup>16</sup> <b>PROPOSED FIRST TAKE POINT</b> X= 536,575' Y= 381,707' NAD 27 LAT. 32.049374° N LONG. 104.215285° W X= 577,759' Y= 381,764' NAD83/86 LAT. 32.049496° N LONG. 104.215778° W	<b>KNOB CREEK 17 20 FED COM 33 NO. 2H WELL</b> X= 537,726' Y= 381,991' NAD 27 LAT. 32.050151° N LONG. 104.211570° W X= 578,909' Y= 382,048' NAD83/86 LAT. 32.050273° N LONG. 104.212063° W ELEV. +3239' NAVD88		<sup>17</sup> <b>OPERATOR CERTIFICATION</b> I hereby certify that the information contained herein is true and complete to the best of my knowledge and belief, and that this organization either owns a working interest or unreleased mineral interest in the land including the proposed bottom hole location or has a right to drill this well at this location pursuant to a contract with an owner of such a mineral or working interest, or to a voluntary pooling agreement or a compulsory pooling order heretofore entered by the division. Signature _____ Date _____ Printed Name _____ E-mail Address _____ <b>SURVEYOR CERTIFICATION</b> I hereby certify that the well location shown on this plat was plotted from field notes of actual surveys made by me or under my supervision, and that the same is true and correct to the best of my belief. 07/20/2021 Date of Survey Signature and Seal of Professional Surveyor <b>ROBERT L. LASTRAPES</b> NEW MEXICO 23006 10/22/2021 Certificate Number
<b>PROPOSED MID POINT</b> X= 536,651' Y= 376,479' NAD 27 LAT. 32.034999° N LONG. 104.215057° W X= 577,835' Y= 376,535' NAD83/86 LAT. 32.035121° N LONG. 104.215550° W	<b>CORNER COORDINATES TABLE (NAD 27)</b> A - X=534988.20', Y=381810.94' B - X=536317.14', Y=381808.02' C - X=537646.07', Y=381805.09' D - X=540303.95', Y=381799.23' E - X=535066.16', Y=376480.27' F - X=536388.17', Y=376478.93' G - X=537710.13', Y=376477.58' H - X=540354.10', Y=376474.90' I - X=535082.62', Y=371149.70' J - X=536409.79', Y=371149.42' K - X=537736.96', Y=371149.15' L - X=540391.30', Y=371148.59'	<b>PROPOSED BOTTOM HOLE LOCATION</b> X= 536,668' Y= 371,174' NAD 27 LAT. 32.020417° N LONG. 104.215023° W X= 577,851' Y= 371,231' NAD83/86 LAT. 32.020539° N LONG. 104.215516° W	



**District I**  
1625 N. French Dr., Hobbs, NM 88240  
Phone: (575) 393-6161 Fax: (575) 393-0720

**District II**  
811 S. First St., Artesia, NM 88210  
Phone: (575) 748-1283 Fax: (575) 748-9720

**District III**  
1000 Rio Brazos Road, Aztec, NM 87410  
Phone: (505) 334-6178 Fax: (505) 334-6170

**District IV**  
1220 S. St. Francis Dr., Santa Fe, NM 87505  
Phone: (505) 476-3460 Fax: (505) 476-3462

State of New Mexico  
Energy, Minerals & Natural Resources Department  
**OIL CONSERVATION DIVISION**  
1220 South St. Francis Dr.  
Santa Fe, NM 87505

Form C-102  
Revised August 1, 2011  
Submit one copy to appropriate  
District Office

☐ AMENDED REPORT

**WELL LOCATION AND ACREAGE DEDICATION PLAT**

<sup>1</sup> API Number		<sup>2</sup> Pool Code 64010		<sup>3</sup> Pool Name WELCH; BONE SPRING	
<sup>4</sup> Property Code		<sup>5</sup> Property Name KNOB CREEK 17 20 FED COM 33			<sup>6</sup> Well Number 3H
<sup>7</sup> OGRID No. 4323		<sup>8</sup> Operator Name CHEVRON U.S.A. INC.			<sup>9</sup> Elevation 3240'

<sup>10</sup> Surface Location

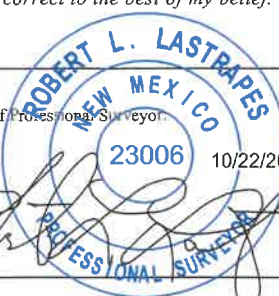
UL or lot no.	Section	Township	Range	Lot Idn	Feet from the	North/South line	Feet from the	East/West line	County
O	8	26 SOUTH	27 EAST, N.M.P.M.		161'	SOUTH	2575'	EAST	EDDY

<sup>11</sup> Bottom Hole Location If Different From Surface

UL or lot no.	Section	Township	Range	Lot Idn	Feet from the	North/South line	Feet from the	East/West line	County
O	20	26 SOUTH	27 EAST, N.M.P.M.		25'	SOUTH	2310'	EAST	EDDY

<sup>12</sup> Dedicated Acres 640	<sup>13</sup> Joint or Infill	<sup>14</sup> Consolidation Code	<sup>15</sup> Order No.
--------------------------------------	-------------------------------	----------------------------------	-------------------------

No allowable will be assigned to this completion until all interests have been consolidated or a non-standard unit has been approved by the division.

<sup>16</sup> <b>PROPOSED FIRST TAKE POINT</b> X= 537,995' Y= 381,704' LAT. 32.049361° N LONG. 104.210702° W NAD 27 X= 579,178' Y= 381,761' LAT. 32.049483° N LONG. 104.211196° W NAD83/86		KNOB CREEK 17 20 FED COM 33 NO. 3H WELL X= 537,726' Y= 381,966' LAT. 32.050082° N LONG. 104.211570° W NAD 27 X= 578,909' Y= 382,023' LAT. 32.050204° N LONG. 104.212064° W NAD83/86 ELEV. +3240' NAVD88		Sec. 8 161' S 45°46'19" E 375.70' 2575' Proposed First Take Point 100' FSL, 2310' FEL		<sup>17</sup> <b>OPERATOR CERTIFICATION</b> I hereby certify that the information contained herein is true and complete to the best of my knowledge and belief, and that this organization either owns a working interest or unleased mineral interest in the land including the proposed bottom hole location or has a right to drill this well at this location pursuant to a contract with an owner of such a mineral or working interest, or to a voluntary pooling agreement or a compulsory pooling order heretofore entered by the division. Signature _____ Date _____ Printed Name _____ E-mail Address _____ <sup>18</sup>	
<b>PROPOSED MID POINT</b> X= 538,044' Y= 376,477' LAT. 32.034991° N LONG. 104.210562° W NAD 27 X= 579,228' Y= 376,534' LAT. 32.035113° N LONG. 104.211055° W NAD83/86		<b>CORNER COORDINATES TABLE (NAD 27)</b> A - X=534988.20', Y=381810.94' B - X=537646.07', Y=381805.09' C - X=538975.01', Y=381802.16' D - X=540303.95', Y=381799.23' E - X=535066.16', Y=376480.27' F - X=537710.13', Y=376477.58' G - X=539032.12', Y=376476.24' H - X=540354.10', Y=376474.90' I - X=535082.62', Y=371149.70' J - X=537736.96', Y=371149.15' K - X=539064.13', Y=371148.87' L - X=540391.30', Y=371148.59'		Sec. 17 Proposed Mid Point		<b>SURVEYOR CERTIFICATION</b> I hereby certify that the well location shown on this plat was plotted from field notes of actual surveys made by me or under my supervision, and that the same is true and correct to the best of my belief. 07/20/2021 Date of Survey Signature and Seal of Professional Surveyor  Certificate Number	
<b>PROPOSED LAST TAKE POINT</b> X= 538,081' Y= 371,249' LAT. 32.020618° N LONG. 104.210463° W NAD 27 X= 579,265' Y= 371,306' LAT. 32.020741° N LONG. 104.210956° W NAD83/86		<b>PROPOSED BOTTOM HOLE LOCATION</b> X= 538,081' Y= 371,174' LAT. 32.020412° N LONG. 104.210462° W NAD 27 X= 579,265' Y= 371,231' LAT. 32.020534° N LONG. 104.210955° W NAD83/86		Sec. 20 Proposed Last Take Point 100' FSL, 2310' FEL			

**District I**  
1625 N. French Dr., Hobbs, NM 88240  
Phone: (575) 393-6161 Fax: (575) 393-0720  
**District II**  
811 S. First St., Artesia, NM 88210  
Phone: (575) 748-1283 Fax: (575) 748-9720  
**District III**  
1000 Rio Brazos Road, Aztec, NM 87410  
Phone: (505) 334-6178 Fax: (505) 334-6170  
**District IV**  
1220 S. St. Francis Dr., Santa Fe, NM 87505  
Phone: (505) 476-3460 Fax: (505) 476-3462

State of New Mexico  
Energy, Minerals & Natural Resources Department  
**OIL CONSERVATION DIVISION**  
1220 South St. Francis Dr.  
Santa Fe, NM 87505

Form C-102  
Revised August 1, 2011  
Submit one copy to appropriate  
District Office

☐ AMENDED REPORT

**WELL LOCATION AND ACREAGE DEDICATION PLAT**

<sup>1</sup> API Number	<sup>2</sup> Pool Code 64010	<sup>3</sup> Pool Name WELCH; BONE SPRING
<sup>4</sup> Property Code	<sup>5</sup> Property Name KNOB CREEK 17 20 FED COM 33	<sup>6</sup> Well Number 4H
<sup>7</sup> OGRID No. 4323	<sup>8</sup> Operator Name CHEVRON U.S.A. INC.	<sup>9</sup> Elevation 3240'

<sup>10</sup> Surface Location

UL or lot no.	Section	Township	Range	Lot Idn	Feet from the	North/South line	Feet from the	East/West line	County
O	8	26 SOUTH	27 EAST, N.M.P.M.		136'	SOUTH	2576'	EAST	EDDY

<sup>11</sup> Bottom Hole Location If Different From Surface

UL or lot no.	Section	Township	Range	Lot Idn	Feet from the	North/South line	Feet from the	East/West line	County
P	20	26 SOUTH	27 EAST, N.M.P.M.		25'	SOUTH	1260'	EAST	EDDY

<sup>12</sup> Dedicated Acres 640	<sup>13</sup> Joint or Infill	<sup>14</sup> Consolidation Code	<sup>15</sup> Order No.
--------------------------------------	-------------------------------	----------------------------------	-------------------------

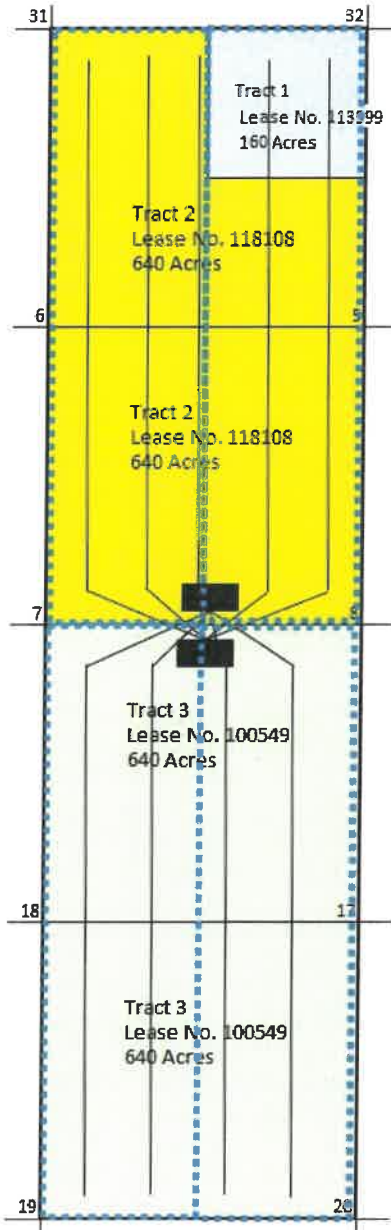
No allowable will be assigned to this completion until all interests have been consolidated or a non-standard unit has been approved by the division.

<p><b>PROPOSED FIRST TAKE POINT</b></p> <p>X= 539,045' Y= 381,702' LAT. 32.049351° N LONG. 104.207313° W</p> <p>X= 580,229' Y= 381,759' LAT. 32.049473° N LONG. 104.207806° W</p>	<p>KNOB CREEK 17 20 FED COM 33 NO. 4H WELL</p> <p>X= 537,726' Y= 381,941' LAT. 32.050013° N LONG. 104.211570° W</p> <p>X= 578,909' Y= 381,998' LAT. 32.050135° N LONG. 104.212064° W</p> <p>ELEV. +3240' NAVD88</p>		<p><b><sup>17</sup> OPERATOR CERTIFICATION</b></p> <p>I hereby certify that the information contained herein is true and complete to the best of my knowledge and belief, and that this organization either owns a working interest or unleased mineral interest in the land including the proposed bottom hole location or has a right to drill this well at this location pursuant to a contract with an owner of such a mineral or working interest, or to a voluntary pooling agreement or a compulsory pooling order heretofore entered by the division.</p> <p>Signature _____ Date _____</p> <p>Printed Name _____</p> <p>E-mail Address _____</p> <p><b>SURVEYOR CERTIFICATION</b></p> <p>I hereby certify that the well location shown on this plat was plotted from field notes of actual surveys made by me or under my supervision, and that the same is true and correct to the best of my belief.</p> <p>07/20/2021 Date of Survey</p> <p>Signature and Seal of Professional Surveyor</p> <p><b>ROBERT L. LASTRAPES</b> NEW MEXICO 23006 10/22/2021</p> <p>Certificate Number _____</p>
<p><b>PROPOSED MID POINT</b></p> <p>X= 539,094' Y= 376,476' LAT. 32.034985° N LONG. 104.207173° W</p> <p>X= 580,278' Y= 376,533' LAT. 32.035107° N LONG. 104.207666° W</p>	<p><b>CORNER COORDINATES TABLE (NAD 27)</b></p> <p>A - X=534988.20', Y=381810.94' B - X=537646.07', Y=381805.09' C - X=538975.01', Y=381802.16' D - X=540303.95', Y=381799.23' E - X=535066.16', Y=376480.27' F - X=537710.13', Y=376477.58' G - X=539032.12', Y=376476.24' H - X=540354.10', Y=376474.90' I - X=535082.62', Y=371149.70' J - X=537736.96', Y=371149.15' K - X=539064.13', Y=371148.87' L - X=540391.30', Y=371148.59'</p>		
<p><b>PROPOSED LAST TAKE POINT</b></p> <p>X= 539,131' Y= 371,249' LAT. 32.020614° N LONG. 104.207075° W</p> <p>X= 580,314' Y= 371,306' LAT. 32.020737° N LONG. 104.207568° W</p>	<p><b>PROPOSED BOTTOM HOLE LOCATION</b></p> <p>X= 539,131' Y= 371,174' LAT. 32.020408° N LONG. 104.207074° W</p> <p>X= 580,315' Y= 371,231' LAT. 32.020530° N LONG. 104.207567° W</p>		

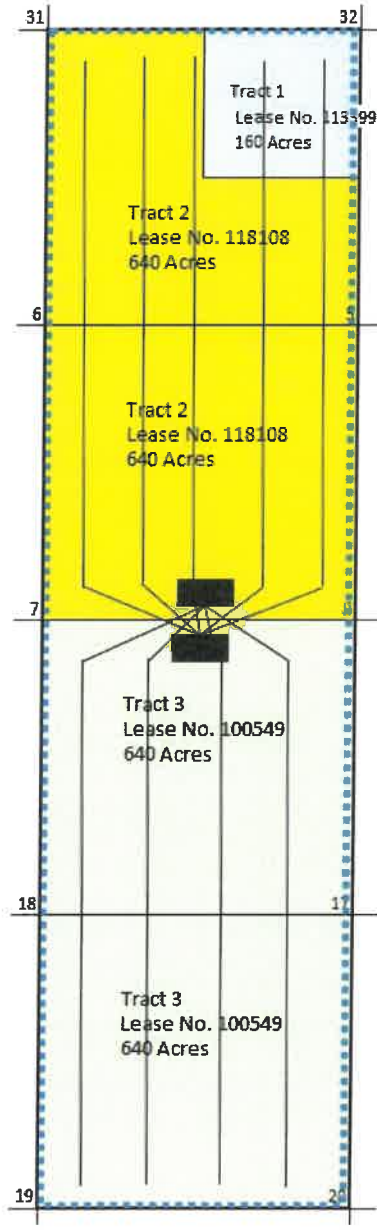
**MAKERS MARK 5-8-17-20 FED COM AREA**

**Standard Spacing vs. Non-Standard Spacing**

**Standard Spacing = 4 HSUs = 4 Fed Com Agreements**



**Non-Standard Spacing = 1 HSU = 1 Fed Com Agreement**





**Andrew Tabije**  
Facilities Engineer  
Mid-Continent Business Unit

Director Fuge and OCD Engineering Bureau  
Oil Conservation Division  
Energy, Minerals, and Native Resources Department  
1220 South Sait Francis Drive  
Santa Fe, NM 87505

**Re: Application of Chevron U.S.A. Inc. for administrative approval of a 2,560-acre, more or less, non-standard spacing unit in the Bone Spring formation comprised of Sections 5, 8, 17, and 20, Township 26 South, Range 27 East, Eddy County.**

Dear Director Fuge/OCD Engineering Bureau:

Chevron U.S.A. Inc. ("Chevron"), OGRID number 4323, respectfully requests administrative approval of a 2560-acre, more or less, non-standard unit ("NSU") comprised of Sections 5, 8, 17, and 20, Township 26 South, Range 27 East, Eddy County, New Mexico. The NSU would be dedicated to the following wells (the "Wells"):

<u>Well Name</u>	<u>API Number</u>
Makers Mark 8 5 Fed Com 1H	30-015-49616
Makers Mark 8 5 Fed Com 2H	30-015-49615
Makers Mark 8 5 Fed Com 3H	30-015-49617
Makers Mark 8 5 Fed Com 4H	30-015-49618
Makers Mark 8 5 Fed Com 5H	30-015-49619
Knob Creek 17 20 Fed Com 1H*	Pending
Knob Creek 17 20 Fed Com 2H*	Pending
Knob Creek 17 20 Fed Com 3H*	Pending
Knob Creek 17 20 Fed Com 4H*	Pending

\*Final well name subject to change

The Makers Mark wells are existing wells and target the Bone Spring formation. The Knob Creek wells are planned wells that will also target the Bone Spring formation. Chevron has existing Wolfcamp formation wells within these same four sections that are subject to an approved 2,560-acre federal Communitization Agreement (Contract No. NM 138618). The BLM Reservoir Management Group has indicated that it can approve a 2,560-acre Communitization Agreement for the Bone Spring formation for the same subject lands so long as there is a matching NSU (See email from Kyle Paradis, Branch Chief – Reservoir Management, attached hereto). All lands included in the NSU subject to this application are federally owned.

The Makers Mark and Knob Creek wells are part a single pool: the WELCH; BONE SPRING (64010). This pool follows the statewide spacing rules.

Chevron U.S.A. Inc.  
1400 Smith Street, Houston, TX 77002  
Tel 713 372 4017  
andrew.tabije@chevron.com





If Chevron was to follow the statewide rules, Chevron would have to have four units to have standard units. The four standard units would be as follows: W/2 of Sections 5 and 8, E/2 of Sections 5 and 8, W/2 of Sections 17 and 20, and E/2 of Section 17 and 20. In this NSU application, Chevron seeks a single 2,560-acre horizontal spacing unit for the Bone Spring Communitization Agreement which will match the existing Wolfcamp Communitization Agreement. All working interest owners and record title owners to the Bone Spring formation within the 2,560-acre development area have executed the proposed Communitization Agreement.

Approval of the NSU will allow Chevron to use existing surface facilities, which will in turn reduce surface disturbance by consolidating roads, tanks, and pipelines. Chevron already has existing pipelines, and existing central tank battery, and existing road, and existing third-party takeaway facilities on this acreage. If Chevron's NSU application is approved, the Wells will be able to use this existing infrastructure, eliminating any need for further surface disturbances. Additionally, approval of Chevron's application promotes effective well spacing and will allow Chevron to commingle production.

Conversely, if Chevron's NSU application is not approved, Chevron will need to construct additional pipelines, roads, and facilities. Included with this application is Exhibit A showing that no additional facilities are needed for a non-standard unit and the additional required infrastructure needed if Chevron has to develop the Wells using standard spacing.

Exhibit B compares and contrasts, in table format, the reduced surface acreage and the cost savings that will occur if the NSU is approved. Developing the acreage as a single, non-standard unit will result in 16.8 acres less surface disturbance that is Chevron has to develop the acreage using standard units. If Chevron's application is approved, total capital costs would be significantly reduced by \$26.1MM because no additional infrastructure would be required to operate the single, non-standard unit.

It is my opinion that approval of the NSU is in the best interest of conservation, prevention of waste, and protection of correlative rights.

Thank you for your consideration. Should you have any questions, please contact me at [andrew.tabije@chevron.com](mailto:andrew.tabije@chevron.com)

Sincerely,

Andrew Tabije  
Facilities Engineer

Exhibit A

# Major Facilities Benefit for NSU

✓ If non-standard spacing unit achieved, ability to commingle and produce into existing CTB and existing trains. Significant savings towards reducing footprint disturbance, limiting additional unnecessary surface equipment / emissions waste, and accelerating production for stakeholders

• If non-standard spacing unit is not achieved:

- Separate individual spacing units result in additional FMP requirements
- Additional resulting sub-trains at existing Central Tank Battery facility (CTB) is not feasible, due to best assessment of limitations / risks / requirements (including infrastructure constraint and topography). Will then require a new CTB facility with multiple sub-trains
- Impact:
  - Significant additional disturbance in a sensitive and constrained area for new CTB: est. **additional ~350,000 sq ft disturbance** for CTB + **possible additional >2640ft length ROW disturbance** for major infrastructure corridor (roads, pipelines, power)
  - Major cost addition – est. **additional >\$25MM** capital expenditure for new CTB including infrastructure

If NSU not approved, undesirable additional CTB and disturbance  
Early / preliminary and for demonstration. Additional CTB+ROW Subject to further scoping; not yet reviewed external authorities

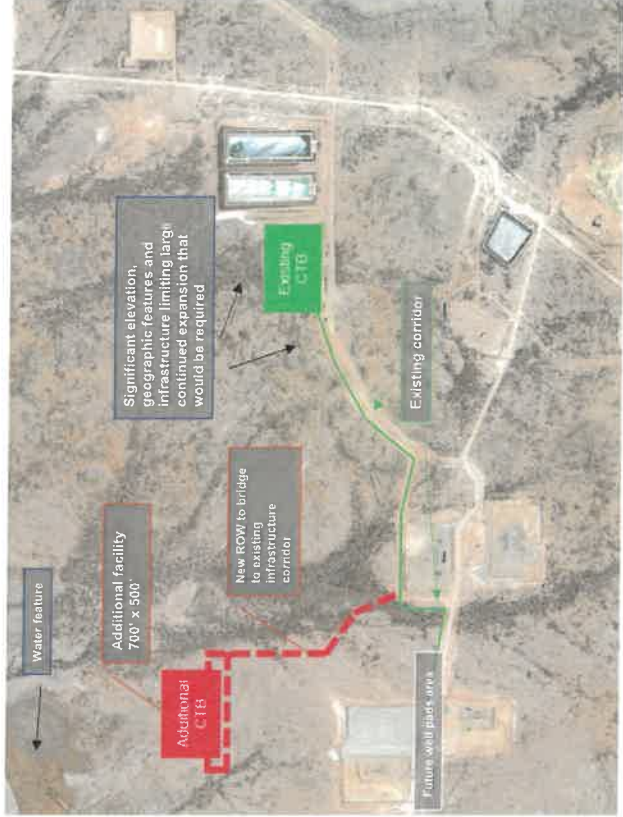




Exhibit B

# Major Facilities Benefit for NSU

Summary Table, Shared Facilities Incremental Costs

Scenario	Additional CTB Costs (\$M)	Additional Infrastructure Cost (Road, Power, Pipeline) (\$M)	Additional Total Capital (\$MM)	Est. Disturbance (Acres)
Non-Standard Spacing Unit	n/a	n/a	n/a	-
Standard Spacing Unit	\$23,385	\$2,808	\$26,193	16.8
Savings			\$26,193	16.8



**From:** [Paradis, Kyle O](#)  
**To:** [Fleming, Alexandra \(Zandra\)](#)  
**Cc:** [Pazer, Gregg](#)  
**Subject:** **[\*\*EXTERNAL\*\*]** Re: [EXTERNAL] RE: 2560 acre Comm Agreement question  
**Date:** Tuesday, July 18, 2023 11:14:29 AM

---

Hello Gregg and Zandra,

My apologies for the delayed response, I was on leave, then travel for work, then some more leave. Anyway, Yes, we can approve a 4 section BS CA that would match the existing 4 section WC CA. We would need to see the spacing unit from OCD is for all 4 sections, but yes I don't have objections to 2560 CAs.

Thank you,

Kyle Paradis  
Branch Chief Reservoir Management  
Bureau of Land Management  
(406) 223-4820

---

**From:** Fleming, Alexandra (Zandra) <Alexandra.Fleming@chevron.com>  
**Sent:** Tuesday, July 18, 2023 7:04 AM  
**To:** Paradis, Kyle O <kparadis@blm.gov>  
**Cc:** Pazer, Gregg <gpazer@chevron.com>  
**Subject:** [EXTERNAL] RE: 2560 acre Comm Agreement question

**This email has been received from outside of DOI - Use caution before clicking on links, opening attachments, or responding.**

Morning Kyle,

Any chance you've been able to review Gregg's email below? We chatted briefly about submitting a 4 section CA for the Bone Spring to match the 4 section Wolfcamp CA in our HayHurst NM area, after the Javelina Unit discussion.

Many thanks!  
Zandra

**From:** Pazer, Gregg <gpazer@chevron.com>  
**Sent:** Wednesday, July 12, 2023 9:36 AM  
**To:** Paradis, Kyle O <kparadis@blm.gov>  
**Cc:** Fleming, Alexandra (Zandra) <Alexandra.Fleming@chevron.com>  
**Subject:** RE: 2560 acre Comm Agreement question

Hi Kyle,

Just checking in to see if you have any feedback to our request to form a 2560 acre CA in Eddy County, NM.

Thanks,

Gregg P.

---

**From:** Pazer, Gregg  
**Sent:** Thursday, June 29, 2023 9:59 AM  
**To:** Paradis, Kyle O <[kparadis@blm.gov](mailto:kparadis@blm.gov)>  
**Cc:** Fleming, Alexandra (Zandra) <[Alexandra.Fleming@chevron.com](mailto:Alexandra.Fleming@chevron.com)>  
**Subject:** 2560 acre Comm Agreement question

Hi Kyle,

Following up on our discussion yesterday, attached is the existing 2,560 acre CA covering the Wolfcamp formation in Sections 5, 8, 17 and 20 in T26S R27E Eddy County, NM. As mentioned, Chevron plans to spud 2-mile wells in the Bone Spring formation going south to north in sections 5 and 8 next month and has future plans to drill addition 2-mile wells going north to south into section 17 and 20 next year (APDs for the wells in sections 17 and 20 are awaiting approval). Also attached are copies of the plats for two of the five wells that Chevron plans to drill in Sections 5 and 8 as well as plats for two of the four wells planned for Sections 17 and 20.

We'd like to submit a CA covering the Bone Spring formation for all four sections so that it will match the existing Wolfcamp CA and avoid the need for the filing of a second CA next year. Is this something that the BLM can approve?

Thanks,

**Gregg Pazer**  
Land Representative  
[gpazer@chevron.com](mailto:gpazer@chevron.com)

**Mid-Continent Business Unit**  
Chevron U.S.A. Inc.  
1400 Smith St.  
Houston, TX 77002  
Tel 713 372 9915  
Mobile 412 592 8964



January 4, 2024

Deana M. Bennett  
505.848.1834  
dmb@modrall.com

**VIA CERTIFIED MAIL**

**TO AFFECTED PARTIES**

**Re: Application of Chevron U.S.A. Inc. For administrative approval of a 2,560-acre, more or less, nonstandard spacing unit in the Bone Spring formation comprised of Sections 5, 8, 17, and 20, Township 26 South, Range 27 East, Eddy County.**

Dear Sir or Madam:

Enclosed is a copy of the above referenced application filed with the New Mexico Conservation Division on this date. Any objections that you have to this application must be filed in writing with the New Mexico Oil Conservation Division, 1220 South St. Francis Drive, Santa Fe, New Mexico 87505, within twenty (20) days from the date the Division receives the above referenced application. If no objection is received within this twenty-day period, the application may be approved administratively by the Division.

If you have any questions concerning this application, please contact:

Andrew Tabije  
Facilities Engineer  
Chevron U.S.A. Inc.  
andrew.tabije@chevron.com  
Tel 713 372 4017

Sincerely,

A handwritten signature in blue ink that reads 'Deana M. Bennett'.

Deana M. Bennett  
*Attorney for Chevron U.S.A. Inc.*

**Exhibit D**

**List of Offset Operators/Notified Parties**

Cimarex Energy Co.  
6001 Deauville Blvd. Ste. 300N  
Midland, TX 79706

COG Operating LLC  
600 W. Illinois Ave.  
Midland, TX 79701

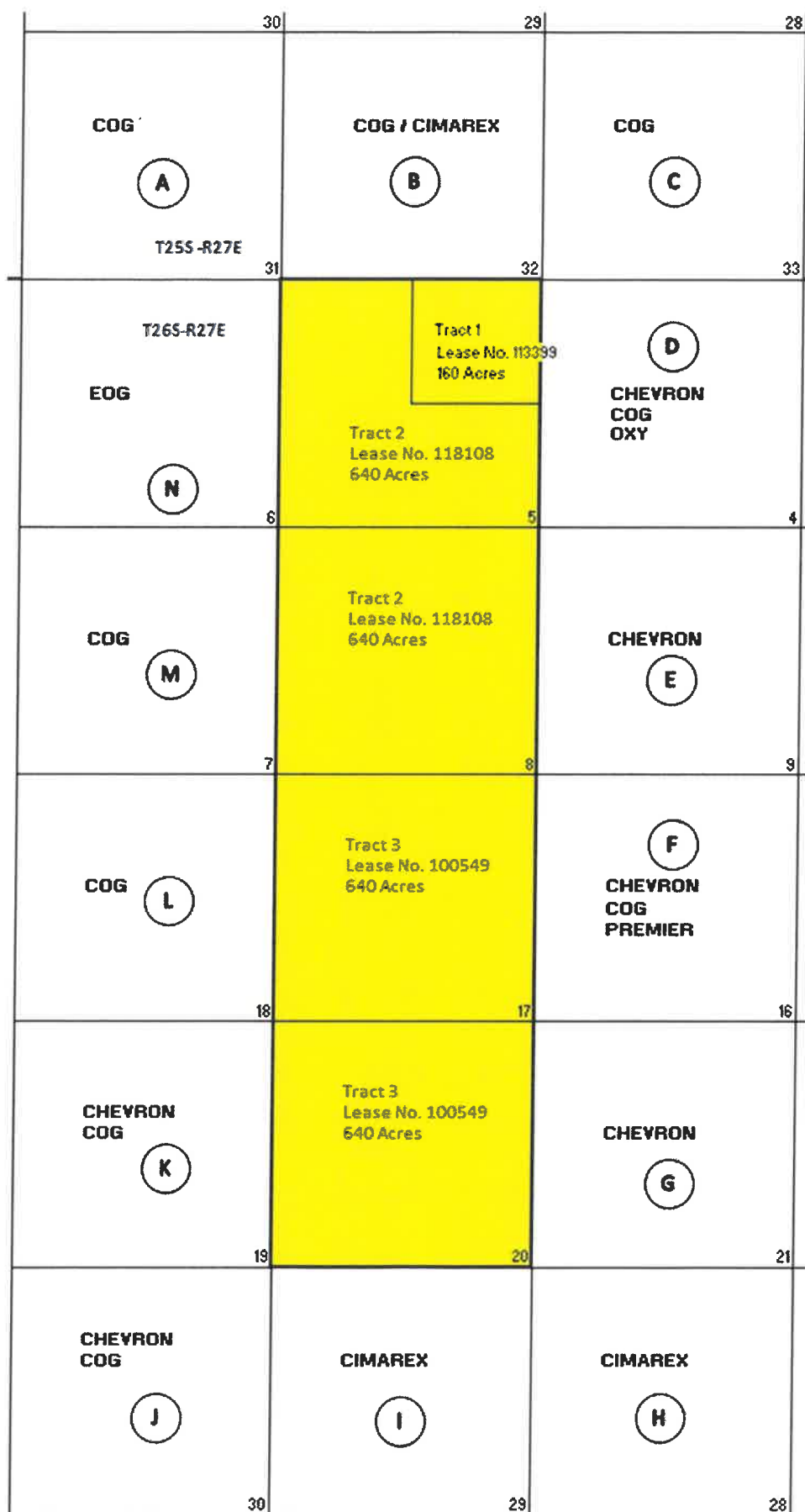
EOG Resources  
5509 Champions Dr.  
Midland, TX 79706

OXY USA Inc.  
5 Greenway Plaza Ste. 110  
Houston, TX 77046

Premier Oil & Gas Inc.  
P.O. Box 837205  
Richardson, TX 75083

Bureau of Land Management  
301 Dinosaur Trail  
Santa Fe, NM 87508

State Land Office  
310 Old Santa Fe Trail  
Santa Fe, NM 87501





## List of Notfied Parties

Tract Letter on Offsetting Acreage Map	Offsetting Sections	Operator(s) (if not Chevron)	WIOs if no operator and if not Chevron	Date Notice Letter sent
A	Sec 31, T25S-R27E	COG Operating LLC	N/A	12/20/2023
B	Sec 32, T25S-R27E	COG Operating LLC Cimarex Energy Co.	N/A	12/20/2023
C	Sec 33, T25S-R27E	COG Operating LLC	N/A	12/20/2023
D	Sec 4, T26S-R27E	COG Operating LLC Oxy USA Inc.	N/A	12/20/2023
E	Sec 9, T26S-R27E	N/A	N/A	12/20/2023
F	Sec 16, T26S-R27E	COG Operating LLC Premier Oil & Gas Inc.	N/A	12/20/2023
G	Sec 21, T26S-R27E	N/A	N/A	12/20/2023
H	Sec 28, T26S-R27E	Cimarex Energy Co.	N/A	12/20/2023
I	Sec 29, T26S-R27E	Cimarex Energy Co.	N/A	12/20/2023
J	Sec 30, T26S-R27E	COG Operating LLC	N/A	12/20/2023
K	Sec 19, T26S-R27E	COG Operating LLC	N/A	12/20/2023
L	Sec 18, T26S-R27E	COG Operating LLC	N/A	12/20/2023
M	Sec 7, T26S-R27E	COG Operating LLC	N/A	12/20/2023
N	Sec 6, T26S-R27E	EOG Resources	N/A	12/20/2023
Bureau of Land Management				12/20/2023
State Land Office				12/20/2023

Karlene Schuman  
 Modrall Sperling Roehl Harris & Sisk P.A.  
 500 Fourth Street, Suite 1000  
 Albuquerque NM 87102

PS Form 3877

Type of Mailing: CERTIFIED MAIL  
 01/04/2024

Firm Mailing Book ID: 258242

Line	USPS Article Number	Name, Street, City, State, Zip	Postage	Service Fee	RR Fee	Rest.Del.Fee	Reference Contents
1	9314 8699 0430 0115 3607 58	Cimarex Energy Co. 6001 Deauville Blvd., Ste 300N. Midland TX 79706	\$1.83	\$4.35	\$2.20	\$0.00	83420.0050. Notice
2	9314 8699 0430 0115 3607 65	COG Operating LLC 600 W. Illinois Ave. Midland TX 79701	\$1.83	\$4.35	\$2.20	\$0.00	83420.0050. Notice
3	9314 8699 0430 0115 3607 72	EOG Resources 5509 Champions Dr. Midland TX 79706	\$1.83	\$4.35	\$2.20	\$0.00	83420.0050. Notice
4	9314 8699 0430 0115 3607 89	OXY USA Inc. 5 Greenway Plaza Ste. 110 Houston TX 77046	\$1.83	\$4.35	\$2.20	\$0.00	83420.0050. Notice
5	9314 8699 0430 0115 3607 96	Premier Oil & Gas Inc. PO Box 837205 Richardson TX 75083	\$1.83	\$4.35	\$2.20	\$0.00	83420.0050. Notice
6	9314 8699 0430 0115 3608 02	Bureau of Land Management 301 Dinosuar Trail Santa Fe NM 87508	\$1.83	\$4.35	\$2.20	\$0.00	83420.0050. Notice
7	9314 8699 0430 0115 3608 19	State of New Mexico - State Land office 310 Old Santa Fe Trail Santa Fe NM 87501	\$1.83	\$4.35	\$2.20	\$0.00	83420.0050. Notice
Totals:			<u>\$12.81</u>	<u>\$30.45</u>	<u>\$15.40</u>	<u>\$0.00</u>	
			Grand Total:			<u>\$58.66</u>	

List Number of Pieces  
Listed by Sender

Total Number of Pieces  
Received at Post Office

Postmaster:  
Name of receiving employee

Dated:

7

## District I

1625 N. French Dr., Hobbs, NM 88240  
Phone: (575) 393-6161 Fax: (575) 393-0720

## District II

811 S. First St., Artesia, NM 88210  
Phone: (575) 748-1283 Fax: (575) 748-9720

## District III

1000 Rio Brazos Road, Aztec, NM 87410  
Phone: (505) 334-6178 Fax: (505) 334-6170

## District IV

1220 S. St. Francis Dr., Santa Fe, NM 87505  
Phone: (505) 476-3460 Fax: (505) 476-3462

State of New Mexico  
Energy, Minerals & Natural Resources Department  
OIL CONSERVATION DIVISION  
1220 South St. Francis Dr.  
Santa Fe, NM 87505

Form C-102

Revised August 1, 2011

Submit one copy to appropriate

District Office

☐ AMENDED REPORT

## WELL LOCATION AND ACREAGE DEDICATION PLAT

<sup>1</sup> API Number	<sup>2</sup> Pool Code 64010	<sup>3</sup> Pool Name WELCH: BONE SPRING
<sup>4</sup> Property Code	<sup>5</sup> Property Name MAKERS MARK 8 5 FED COM 27	<sup>6</sup> Well Number 1H
<sup>7</sup> OGRID No. 4323	<sup>8</sup> Operator Name CHEVRON U.S.A. INC.	<sup>9</sup> Elevation 3260'

<sup>10</sup> Surface Location

UL or lot no.	Section	Township	Range	Lot Idn	Feet from the	North/South line	Feet from the	East/West line	County
B	17	26 SOUTH	27 EAST, N.M.P.M.		775'	NORTH	2614'	EAST	EDDY

<sup>11</sup> Bottom Hole Location If Different From Surface

UL or lot no.	Section	Township	Range	Lot Idn	Feet from the	North/South line	Feet from the	East/West line	County
D	5	26 SOUTH	27 EAST, N.M.P.M.		25'	NORTH	330'	WEST	EDDY

<sup>12</sup> Dedicated Acres 640	<sup>13</sup> Joint or Infill	<sup>14</sup> Consolidation Code	<sup>15</sup> Order No.
--------------------------------------	-------------------------------	----------------------------------	-------------------------

No allowable will be assigned to this completion until all interests have been consolidated or a non-standard unit has been approved by the division.

<p><b>PROPOSED LAST TAKE POINT</b></p> <p>X= 535,284' Y= 392,343' LAT. 32.078615° N LONG. 104.219413° W NAD 27</p> <p>X= 576,468' Y= 392,400' LAT. 32.078736° N LONG. 104.219908° W NAD83/86</p> <p><b>PROPOSED MID POINT</b></p> <p>X= 535,265' Y= 387,142' LAT. 32.064317° N LONG. 104.219493° W NAD 27</p> <p>X= 576,449' Y= 387,199' LAT. 32.064438° N LONG. 104.219987° W NAD83/86</p> <p><b>PROPOSED FIRST TAKE POINT</b></p> <p>X= 535,317' Y= 381,910' LAT. 32.049935° N LONG. 104.219343° W NAD 27</p> <p>X= 576,501' Y= 381,967' LAT. 32.050057° N LONG. 104.219837° W NAD83/86</p> <p><b>PROPOSED BOTTOM HOLE LOCATION</b></p> <p>X= 535,285' Y= 392,418' LAT. 32.078821° N LONG. 104.219412° W NAD 27</p> <p>X= 576,468' Y= 392,475' LAT. 32.078942° N LONG. 104.219907° W NAD83/86</p> <p><b>CORNER COORDINATES TABLE (NAD 27)</b></p> <p>A - Y=392442.33, X=534954.83 B - Y=392444.24, X=536280.85 C - Y=392446.14, X=537606.87 D - Y=392449.96, X=540258.92 E - Y=387143.09, X=534935.36 F - Y=387137.83, X=536254.75 G - Y=387132.57, X=537574.15 H - Y=387122.04, X=540212.94 I - Y=381810.94, X=534988.20 J - Y=381808.02, X=536317.14 K - Y=381805.09, X=537646.07 L - Y=381799.23, X=540303.95 M - Y=376480.27, X=535066.16 N - Y=376474.90, X=540354.10</p> <p><b>MAKERS MARK 8 5 FED COM 27 NO. 1H WELL</b></p> <p>X= 537,697' Y= 381,030' LAT. 32.047509° N LONG. 104.211665° W NAD 27</p> <p>X= 578,881' Y= 381,087' LAT. 32.047631° N LONG. 104.212159° W NAD83/86</p> <p>ELEV. +3260' NAVD83</p>		<p><b><sup>17</sup> OPERATOR CERTIFICATION</b></p> <p>I hereby certify that the information contained herein is true and complete to the best of my knowledge and belief, and that this organization either owns a working interest or unleased mineral interest in the land including the proposed bottom hole location or has a right to drill this well at this location pursuant to a contract with an owner of such a mineral or working interest, or to a voluntary pooling agreement or a compulsory pooling order heretofore entered by the division.</p> <p>Signature _____ Date _____</p> <p>Printed Name _____</p> <p>E-mail Address _____</p> <p><b><sup>18</sup> SURVEYOR CERTIFICATION</b></p> <p>I hereby certify that the well location shown on this plat was plotted from field notes of actual surveys made by me or under my supervision, and that the same is true and correct to the best of my belief.</p> <p>07/14/2021 Date of Survey</p> <p>Signature and Seal of Professional Surveyor: </p> <p>Certificate Number _____ 08/05/2021</p>
--	--	--

EXHIBIT

A

## District I

1625 N. French Dr., Hobbs, NM 88240  
Phone: (575) 393-6161 Fax: (575) 393-0720

## District II

811 S. First St., Artesia, NM 88210  
Phone: (575) 748-1283 Fax: (575) 748-9720

## District III

1000 Rio Brazos Road, Aztec, NM 87410  
Phone: (505) 334-6178 Fax: (505) 334-6170

## District IV

1220 S. St. Francis Dr., Santa Fe, NM 87505  
Phone: (505) 476-3460 Fax: (505) 476-3462

State of New Mexico  
Energy, Minerals & Natural Resources Department  
OIL CONSERVATION DIVISION  
1220 South St. Francis Dr.  
Santa Fe, NM 87505

Form C-102

Revised August 1, 2011

Submit one copy to appropriate

District Office

☐ AMENDED REPORT

## WELL LOCATION AND ACREAGE DEDICATION PLAT

<sup>1</sup> API Number	<sup>2</sup> Pool Code 64010	<sup>3</sup> Pool Name WELCH: BONE SPRING
<sup>4</sup> Property Code	<sup>5</sup> Property Name MAKERS MARK 8 5 FED COM 27	<sup>6</sup> Well Number 2H
<sup>7</sup> OGRID No. 4323	<sup>8</sup> Operator Name CHEVRON U.S.A. INC.	<sup>9</sup> Elevation 3259'

<sup>10</sup> Surface Location

UL or lot no.	Section	Township	Range	Lot Idn	Feet from the	North/South line	Feet from the	East/West line	County
B	17	26 SOUTH	27 EAST, N.M.P.M.		750'	NORTH	2614'	EAST	EDDY

<sup>11</sup> Bottom Hole Location If Different From Surface

UL or lot no.	Section	Township	Range	Lot Idn	Feet from the	North/South line	Feet from the	East/West line	County
C	5	26 SOUTH	27 EAST, N.M.P.M.		25'	NORTH	1380'	WEST	EDDY

<sup>12</sup> Dedicated Acres 640	<sup>13</sup> Joint or Infill	<sup>14</sup> Consolidation Code	<sup>15</sup> Order No.
--------------------------------------	-------------------------------	----------------------------------	-------------------------

No allowable will be assigned to this completion until all interests have been consolidated or a non-standard unit has been approved by the division.

<p><b>16</b></p> <p><b>PROPOSED LAST TAKE POINT</b></p> <p>X= 536,334' Y= 392,344' LAT. 32.078616° N LONG. 104.216023° W NAD 27</p> <p>X= 577,518' Y= 392,401' LAT. 32.078737° N LONG. 104.216518° W NAD83/86</p> <p><b>PROPOSED MID POINT</b></p> <p>X= 536,315' Y= 387,138' LAT. 32.064302° N LONG. 104.216103° W NAD 27</p> <p>X= 577,499' Y= 387,195' LAT. 32.064424° N LONG. 104.216597° W NAD83/86</p> <p><b>PROPOSED FIRST TAKE POINT</b></p> <p>X= 536,367' Y= 381,908' LAT. 32.049925° N LONG. 104.215954° W NAD 27</p> <p>X= 577,551' Y= 381,965' LAT. 32.050047° N LONG. 104.216448° W NAD83/86</p>	<p><b>PROPOSED BOTTOM HOLE LOCATION</b></p> <p>X= 536,335' Y= 392,419' LAT. 32.078622° N LONG. 104.216022° W NAD 27</p> <p>X= 577,518' Y= 392,476' LAT. 32.078943° N LONG. 104.216517° W NAD83/86</p> <p><b>CORNER COORDINATES TABLE (NAD 27)</b></p> <p>A - Y=392442.33, X=534954.83 B - Y=392444.24, X=536280.85 C - Y=392446.14, X=537606.87 D - Y=392449.96, X=540258.92 E - Y=387143.09, X=534935.36 F - Y=387137.83, X=536254.75 G - Y=387132.57, X=537574.15 H - Y=387122.04, X=540212.94 I - Y=381810.94, X=534988.20 J - Y=381808.02, X=536317.14 K - Y=381805.09, X=537646.07 L - Y=381799.23, X=540303.95 M - Y=376480.27, X=535066.16 N - Y=376474.90, X=540354.10</p> <p><b>MAKERS MARK 8 5 FED COM 27 NO. 2H WELL</b></p> <p>X= 537,697' Y= 381,055' LAT. 32.047578° N LONG. 104.211665° W NAD 27</p> <p>X= 578,881' Y= 381,112' LAT. 32.047700° N LONG. 104.212158° W NAD83/86</p> <p>ELEV. +3259' NAVD88</p>		<p><b>17 OPERATOR CERTIFICATION</b></p> <p>I hereby certify that the information contained herein is true and complete to the best of my knowledge and belief, and that this organization either owns a working interest or unleased mineral interest in the land including the proposed bottom hole location or has a right to drill this well at this location pursuant to a contract with an owner of such a mineral or working interest, or to a voluntary pooling agreement or a compulsory pooling order heretofore entered by the division.</p> <p>Signature _____ Date _____</p> <p>Printed Name _____</p> <p>E-mail Address _____</p> <p><b>18 SURVEYOR CERTIFICATION</b></p> <p>I hereby certify that the well location shown on this plat was plotted from field notes of actual surveys made by me or under my supervision, and that the same is true and correct to the best of my belief.</p> <p>07/14/2021 Date of Survey</p> <p>Signature and Seal of Professional Surveyor: </p> <p>Certificate Number _____ 08/05/2021</p>
--	--	--	--



District I  
1625 N. French Dr., Hobbs, NM 88240  
Phone: (575) 393-6161 Fax: (575) 393-0720  
District II  
811 S. First St., Artesia, NM 88210  
Phone: (575) 748-1283 Fax: (575) 748-9720  
District III  
1000 Rio Brazos Road, Aztec, NM 87410  
Phone: (505) 334-6178 Fax: (505) 334-6170  
District IV  
1220 S. St. Francis Dr., Santa Fe, NM 87505  
Phone: (505) 476-3460 Fax: (505) 476-3462

State of New Mexico  
Energy, Minerals & Natural Resources Department  
**OIL CONSERVATION DIVISION**  
1220 South St. Francis Dr.  
Santa Fe, NM 87505

Form C-102  
Revised August 1, 2011  
Submit one copy to appropriate  
District Office

☐ AMENDED REPORT

**WELL LOCATION AND ACREAGE DEDICATION PLAT**

<sup>1</sup> API Number	<sup>2</sup> Pool Code 64010	<sup>3</sup> Pool Name WELCH: BONE SPRING
<sup>4</sup> Property Code	<sup>5</sup> Property Name MAKERS MARK 8 5 FED COM 27	<sup>6</sup> Well Number 3H
<sup>7</sup> OGRID No. 4323	<sup>8</sup> Operator Name CHEVRON U.S.A. INC.	<sup>9</sup> Elevation 3258'

<sup>10</sup> Surface Location

UL or lot no.	Section	Township	Range	Lot Idn	Feet from the	North/South line	Feet from the	East/West line	County
B	17	26 SOUTH	27 EAST, N.M.P.M.		725'	NORTH	2614'	EAST	EDDY

<sup>11</sup> Bottom Hole Location If Different From Surface

UL or lot no.	Section	Township	Range	Lot Idn	Feet from the	North/South line	Feet from the	East/West line	County
C	5	26 SOUTH	27 EAST, N.M.P.M.		25'	NORTH	2310'	WEST	EDDY

<sup>12</sup> Dedicated Acres 640	<sup>13</sup> Joint or Infill	<sup>14</sup> Consolidation Code	<sup>15</sup> Order No.
--------------------------------------	-------------------------------	----------------------------------	-------------------------

No allowable will be assigned to this completion until all interests have been consolidated or a non-standard unit has been approved by the division.

<p><b>PROPOSED LAST TAKE POINT</b></p> <p>X= 537,264' Y= 392,346' LAT. 32.078617° N LONG. 104.213021° W NAD 27</p> <p>X= 578,448' Y= 392,403' LAT. 32.078738° N LONG. 104.213515° W NAD83/86</p> <p><b>PROPOSED MID POINT</b></p> <p>X= 537,246' Y= 387,134' LAT. 32.064289° N LONG. 104.213100° W NAD 27</p> <p>X= 578,429' Y= 387,191' LAT. 32.064411° N LONG. 104.213595° W NAD83/86</p> <p><b>PROPOSED FIRST TAKE POINT</b></p> <p>X= 537,297' Y= 381,906' LAT. 32.049917° N LONG. 104.212952° W NAD 27</p> <p>X= 578,481' Y= 381,963' LAT. 32.050039° N LONG. 104.213446° W NAD83/86</p>	<p><b>PROPOSED BOTTOM HOLE LOCATION</b></p> <p>X= 537,265' Y= 392,421' LAT. 32.078823° N LONG. 104.213019° W NAD 27</p> <p>X= 578,448' Y= 392,478' LAT. 32.078944° N LONG. 104.213514° W NAD83/86</p> <p><b>CORNER COORDINATES TABLE (NAD 27)</b></p> <p>A - Y=392442.33, X=534954.83 B - Y=392444.24, X=536280.85 C - Y=392446.14, X=537606.87 D - Y=392449.96, X=540258.92 E - Y=387143.09, X=534935.36 F - Y=387137.83, X=536254.75 G - Y=387132.57, X=537574.15 H - Y=387122.04, X=540212.94 I - Y=381810.94, X=534988.20 J - Y=381808.02, X=536317.14 K - Y=381805.09, X=537646.07 L - Y=381799.23, X=540303.95 M - Y=376480.27, X=535066.16 N - Y=376474.90, X=540354.10</p> <p><b>MAKERS MARK 8 5 FED COM 27 NO. 3H WELL</b></p> <p>X= 537,697' Y= 381,080' LAT. 32.047647° N LONG. 104.211665° W NAD 27</p> <p>X= 578,881' Y= 381,137' LAT. 32.047768° N LONG. 104.212158° W NAD83/86</p> <p>ELEV. +3258' NAVD88</p>		<p><b><sup>17</sup> OPERATOR CERTIFICATION</b></p> <p>I hereby certify that the information contained herein is true and complete to the best of my knowledge and belief, and that this organization either owns a working interest or unleased mineral interest in the land including the proposed bottom hole location or has a right to drill this well at this location pursuant to a contract with an owner of such a mineral or working interest, or to a voluntary pooling agreement or a compulsory pooling order heretofore entered by the division.</p> <p>Signature _____ Date _____</p> <p>Printed Name _____</p> <p>E-mail Address _____</p> <p><b><sup>18</sup> SURVEYOR CERTIFICATION</b></p> <p>I hereby certify that the well location shown on this plat was plotted from field notes of actual surveys made by me or under my supervision, and that the same is true and correct to the best of my belief.</p> <p>07/14/2021 Date of Survey</p> <p>Signature and Seal of Professional Surveyor or: </p> <p>Certificate Number _____ 08/05/2021</p>
---	--	--	---

District I  
1625 N. French Dr., Hobbs, NM 88240  
Phone: (575) 393-6161 Fax: (575) 393-0720

District II  
811 S. First St., Artesia, NM 88210  
Phone: (575) 748-1283 Fax: (575) 748-9720

District III  
1000 Rio Brazos Road, Aztec, NM 87410  
Phone: (505) 334-6178 Fax: (505) 334-6170

District IV  
1220 S. St. Francis Dr., Santa Fe, NM 87505  
Phone: (505) 476-3460 Fax: (505) 476-3462

State of New Mexico  
Energy, Minerals & Natural Resources Department  
OIL CONSERVATION DIVISION  
1220 South St. Francis Dr.  
Santa Fe, NM 87505

Form C-102  
Revised August 1, 2011  
Submit one copy to appropriate  
District Office

☐ AMENDED REPORT

WELL LOCATION AND ACREAGE DEDICATION PLAT

<sup>1</sup> API Number	<sup>2</sup> Pool Code 64010	<sup>3</sup> Pool Name WELCH: BONE SPRING
<sup>4</sup> Property Code	<sup>5</sup> Property Name MAKERS MARK 8 5 FED COM 27	<sup>6</sup> Well Number 4H
<sup>7</sup> OGRID No. 4323	<sup>8</sup> Operator Name CHEVRON U.S.A. INC.	<sup>9</sup> Elevation 3257'

<sup>10</sup> Surface Location


UL or lot no.	Section	Township	Range	Lot Idn	Feet from the	North/South line	Feet from the	East/West line	County
B	17	26 SOUTH	27 EAST, N.M.P.M.		700'	NORTH	2613'	EAST	EDDY

<sup>11</sup> Bottom Hole Location If Different From Surface

UL or lot no.	Section	Township	Range	Lot Idn	Feet from the	North/South line	Feet from the	East/West line	County
B	5	26 SOUTH	27 EAST, N.M.P.M.		25'	NORTH	1585'	EAST	EDDY

<sup>12</sup> Dedicated Acres 640	<sup>13</sup> Joint or Infill	<sup>14</sup> Consolidation Code	<sup>15</sup> Order No.
--------------------------------------	-------------------------------	----------------------------------	-------------------------

No allowable will be assigned to this completion until all interests have been consolidated or a non-standard unit has been approved by the division.

<p><b>16</b></p> <div style="border: 1px solid black; padding: 5px; margin-bottom: 10px;"> <b>PROPOSED LAST TAKE POINT</b>  X= 538,673'  Y= 392,348'  LAT. 32.078618° N  LONG. 104.208473° W  NAD 27 </div> <div style="border: 1px solid black; padding: 5px; margin-bottom: 10px;"> <b>PROPOSED MID POINT</b>  X= 538,628'  Y= 387,128'  LAT. 32.064270° N  LONG. 104.208638° W  NAD 27 </div> <div style="border: 1px solid black; padding: 5px; margin-bottom: 10px;"> <b>PROPOSED FIRST TAKE POINT</b>  X= 538,717'  Y= 381,903'  LAT. 32.049804° N  LONG. 104.208370° W  NAD 27 </div> <div style="border: 1px solid black; padding: 5px; margin-bottom: 10px;"> <b>PROPOSED BOTTOM HOLE LOCATION</b>  X= 538,674'  Y= 392,423'  LAT. 32.078824° N  LONG. 104.208471° W  NAD 27 </div> <div style="border: 1px solid black; padding: 5px; margin-bottom: 10px;"> <b>CORNER COORDINATES TABLE (NAD 27)</b>  A - Y=392442.33, X=534954.83  B - Y=392446.14, X=537606.87  C - Y=392448.05, X=538932.89  D - Y=392449.96, X=540258.92  E - Y=387143.09, X=534935.36  F - Y=387132.57, X=537574.15  G - Y=387127.30, X=538893.54  H - Y=387122.04, X=540212.94  I - Y=381810.94, X=534988.20  J - Y=381805.09, X=537646.07  K - Y=381802.16, X=538975.01  L - Y=381799.23, X=540303.95  M - Y=376480.27, X=535066.16  N - Y=376474.90, X=540354.10 </div> <div style="border: 1px solid black; padding: 5px;"> <b>MAKERS MARK 8 5 FED COM 27 NO. 4H WELL</b>  X= 537,697'  Y= 381,105'  LAT. 32.047715° N  LONG. 104.211665° W  NAD 27 </div>	<p><b>A</b></p> <p><b>B</b></p> <p><b>C</b></p> <p><b>D</b></p> <p><b>E</b></p> <p><b>F</b></p> <p><b>G</b></p> <p><b>H</b></p> <p><b>I</b></p> <p><b>J</b></p> <p><b>K</b></p> <p><b>L</b></p> <p><b>M</b></p> <p><b>N</b></p>	<p><b>17 OPERATOR CERTIFICATION</b></p> <p>I hereby certify that the information contained herein is true and complete to the best of my knowledge and belief, and that this organization either owns a working interest or unleased mineral interest in the land including the proposed bottom hole location or has a right to drill this well at this location pursuant to a contract with an owner of such a mineral or working interest, or to a voluntary pooling agreement or a compulsory pooling order heretofore entered by the division.</p> <p>Signature _____ Date _____</p> <p>Printed Name _____</p> <p>E-mail Address _____</p> <p><b>18 SURVEYOR CERTIFICATION</b></p> <p>I hereby certify that the well location shown on this plat was plotted from field notes of actual surveys made by me or under my supervision, and that the same is true and correct to the best of my belief.</p> <p>07/14/2021 Date of Survey</p> <p>Signature and Seal of Professional Surveyor: </p> <p>Certificate Number _____ 08/05/2021</p>
--	---	---



## District I

1625 N. French Dr., Hobbs, NM 88240  
Phone: (575) 393-6161 Fax: (575) 393-0720

## District II

811 S. First St., Artesia, NM 88210  
Phone: (575) 748-1283 Fax: (575) 748-9720

## District III

1000 Rio Brazos Road, Aztec, NM 87410  
Phone: (505) 334-6178 Fax: (505) 334-6170

## District IV

1220 S. St. Francis Dr., Santa Fe, NM 87505  
Phone: (505) 476-3460 Fax: (505) 476-3462

State of New Mexico  
Energy, Minerals & Natural Resources Department  
OIL CONSERVATION DIVISION  
1220 South St. Francis Dr.  
Santa Fe, NM 87505

Form C-102

Revised August 1, 2011

Submit one copy to appropriate

District Office

☐ AMENDED REPORT

## WELL LOCATION AND ACREAGE DEDICATION PLAT

<sup>1</sup> API Number	<sup>2</sup> Pool Code 64010	<sup>3</sup> Pool Name WELCH: BONE SPRING
<sup>4</sup> Property Code	<sup>5</sup> Property Name MAKERS MARK 8 5 FED COM 27	<sup>6</sup> Well Number 5H
<sup>7</sup> OGRID No. 4323	<sup>8</sup> Operator Name CHEVRON U.S.A. INC.	<sup>9</sup> Elevation 3257'

<sup>10</sup> Surface Location


UL or lot no.	Section	Township	Range	Lot Idn	Feet from the	North/South line	Feet from the	East/West line	County
B	17	26 SOUTH	27 EAST, N.M.P.M.		675'	NORTH	2613'	EAST	EDDY

<sup>11</sup> Bottom Hole Location If Different From Surface

UL or lot no.	Section	Township	Range	Lot Idn	Feet from the	North/South line	Feet from the	East/West line	County
A	5	26 SOUTH	27 EAST, N.M.P.M.		25'	NORTH	530'	EAST	EDDY

<sup>12</sup> Dedicated Acres 640	<sup>13</sup> Joint or Infill	<sup>14</sup> Consolidation Code	<sup>15</sup> Order No.
--------------------------------------	-------------------------------	----------------------------------	-------------------------

No allowable will be assigned to this completion until all interests have been consolidated or a non-standard unit has been approved by the division.

<p><b>PROPOSED LAST TAKE POINT</b></p> <p>X= 539,728' Y= 392,349' LAT. 32.078619° N LONG. 104.205067° W</p> <p>X= 580,912' Y= 392,406' LAT. 32.078740° N LONG. 104.205561° W</p> <p><b>PROPOSED MID POINT</b></p> <p>X= 539,683' Y= 387,124' LAT. 32.064255° N LONG. 104.205232° W</p> <p>X= 580,867' Y= 387,181' LAT. 32.064377° N LONG. 104.205726° W</p> <p><b>PROPOSED FIRST TAKE POINT</b></p> <p>X= 539,772' Y= 381,900' LAT. 32.049894° N LONG. 104.204984° W</p> <p>X= 580,956' Y= 381,957' LAT. 32.050016° N LONG. 104.205458° W</p>	<p><b>PROPOSED BOTTOM HOLE LOCATION</b></p> <p>X= 539,729' Y= 392,424' LAT. 32.078825° N LONG. 104.205064° W</p> <p>X= 580,912' Y= 392,481' LAT. 32.078946° N LONG. 104.205558° W</p> <p><b>CORNER COORDINATES TABLE (NAD 27)</b></p> <p>A - Y=392442.33, X=534954.83 B - Y=392446.14, X=537606.87 C - Y=392448.05, X=538932.89 D - Y=392449.96, X=540258.92 E - Y=387143.09, X=534935.36 F - Y=387132.57, X=537574.15 G - Y=387127.30, X=538893.54 H - Y=387122.04, X=540212.94 I - Y=381810.94, X=534988.20 J - Y=381805.09, X=537646.07 K - Y=381802.16, X=538975.01 L - Y=381799.23, X=540303.95 M - Y=376480.27, X=535066.16 N - Y=376474.90, X=540354.10</p> <p><b>MAKERS MARK 8 5 FED COM 27 NO. 5H WELL</b></p> <p>X= 537,697' Y= 381,130' LAT. 32.047784° N LONG. 104.211665° W</p> <p>X= 578,881' Y= 381,187' LAT. 32.047906° N LONG. 104.212158° W</p> <p>ELEV. +3257' NAVD83</p>	<p><b><sup>17</sup> OPERATOR CERTIFICATION</b></p> <p>I hereby certify that the information contained herein is true and complete to the best of my knowledge and belief, and that this organization either owns a working interest or unleased mineral interest in the land including the proposed bottom hole location or has a right to drill this well at this location pursuant to a contract with an owner of such a mineral or working interest, or to a voluntary pooling agreement or a compulsory pooling order heretofore entered by the division.</p> <p>Signature _____ Date _____</p> <p>Printed Name _____</p> <p>E-mail Address _____</p> <p><b><sup>18</sup> SURVEYOR CERTIFICATION</b></p> <p>I hereby certify that the well location shown on this plat was plotted from field notes of actual surveys made by me or under my supervision, and that the same is true and correct to the best of my belief.</p> <p>07/14/2021 Date of Survey</p> <p>Signature and Seal of Professional Surveyor: </p> <p>Certificate Number _____ 08/05/2021</p>
---	--	---

District I  
1625 N. French Dr., Hobbs, NM 88240  
Phone: (575) 393-6161 Fax: (575) 393-0720

District II  
811 S. First St., Artesia, NM 88210  
Phone: (575) 748-1283 Fax: (575) 748-9720

District III  
1000 Rio Brazos Road, Aztec, NM 87410  
Phone: (505) 334-6178 Fax: (505) 334-6170

District IV  
1220 S. St. Francis Dr., Santa Fe, NM 87505  
Phone: (505) 476-3460 Fax: (505) 476-3462

State of New Mexico  
Energy, Minerals & Natural Resources Department  
OIL CONSERVATION DIVISION  
1220 South St. Francis Dr.  
Santa Fe, NM 87505

Form C-102  
Revised August 1, 2011  
Submit one copy to appropriate  
District Office  
☐ AMENDED REPORT

## WELL LOCATION AND ACREAGE DEDICATION PLAT

<sup>1</sup> API Number	<sup>2</sup> Pool Code 64010	<sup>3</sup> Pool Name WELCH; BONE SPRING
<sup>4</sup> Property Code	<sup>5</sup> Property Name KNOB CREEK 17 20 FED COM 33	<sup>6</sup> Well Number 1H
<sup>7</sup> OGRID No. 4323	<sup>8</sup> Operator Name CHEVRON U.S.A. INC.	<sup>9</sup> Elevation 3238'

<sup>10</sup> Surface Location

UL or lot no.	Section	Township	Range	Lot Idn	Feet from the	North/South line	Feet from the	East/West line	County
O	8	26 SOUTH	27 EAST, N.M.P.M.		211'	SOUTH	2574'	EAST	EDDY

<sup>11</sup> Bottom Hole Location If Different From Surface

UL or lot no.	Section	Township	Range	Lot Idn	Feet from the	North/South line	Feet from the	East/West line	County
M	20	26 SOUTH	27 EAST, N.M.P.M.		25'	SOUTH	530'	WEST	EDDY

<sup>12</sup> Dedicated Acres 640	<sup>13</sup> Joint or Infill	<sup>14</sup> Consolidation Code	<sup>15</sup> Order No.
--------------------------------------	-------------------------------	----------------------------------	-------------------------

No allowable will be assigned to this completion until all interests have been consolidated or a non-standard unit has been approved by the division.

<p><b>PROPOSED FIRST TAKE POINT</b></p> <p>X= 535,520' Y= 381,710' NAD 27 LAT. 32.049383° N LONG. 104.218690° W</p> <p>X= 576,703' Y= 381,767' NAD83/86 LAT. 32.049505° N LONG. 104.219184° W</p>	<p><b>PROPOSED MID POINT</b></p> <p>X= 535,596' Y= 376,480' NAD 27 LAT. 32.035005° N LONG. 104.218461° W</p> <p>X= 576,780' Y= 376,536' NAD83/86 LAT. 32.035127° N LONG. 104.218955° W</p>	<p><b>PROPOSED LAST TAKE POINT</b></p> <p>X= 535,612' Y= 371,250' NAD 27 LAT. 32.020627° N LONG. 104.218427° W</p> <p>X= 576,796' Y= 371,306' NAD83/86 LAT. 32.020749° N LONG. 104.218921° W</p>	<p><b>PROPOSED BOTTOM HOLE LOCATION</b></p> <p>X= 535,613' Y= 371,175' NAD 27 LAT. 32.020421° N LONG. 104.218427° W</p> <p>X= 576,796' Y= 371,231' NAD83/86 LAT. 32.020543° N LONG. 104.218920° W</p>	<p><b>16 KNOB CREEK 17 20 FED COM 33 NO. 1H WELL</b></p> <p>X= 537,726' Y= 382,016' NAD 27 LAT. 32.050220° N LONG. 104.211570° W</p> <p>X= 578,909' Y= 382,073' NAD83/86 LAT. 32.050341° N LONG. 104.212063° W</p> <p>ELEV. +3238' NAVD88</p> <p><b>CORNER COORDINATES TABLE (NAD 27)</b></p> <p>A - X=534988.20', Y=381810.94' B - X=536317.14', Y=381808.02' C - X=537646.07', Y=381805.09' D - X=540303.95', Y=381799.23' E - X=535066.16', Y=376480.27' F - X=536388.17', Y=376478.93' G - X=537710.13', Y=376477.58' H - X=540354.10', Y=376474.90' I - X=535082.62', Y=371149.70' J - X=536409.79', Y=371149.42' K - X=537736.96', Y=371149.15' L - X=540391.30', Y=371148.59'</p>
				<p><b>17 OPERATOR CERTIFICATION</b></p> <p>I hereby certify that the information contained herein is true and complete to the best of my knowledge and belief, and that this organization either owns a working interest or unleased mineral interest in the land including the proposed bottom hole location or has a right to drill this well at this location pursuant to a contract with an owner of such a mineral or working interest, or to a voluntary pooling agreement or a compulsory pooling order heretofore entered by the division.</p> <p>Signature _____ Date _____</p> <p>Printed Name _____</p> <p>E-mail Address _____</p> <p><b>18 SURVEYOR CERTIFICATION</b></p> <p>I hereby certify that the well location shown on this plat was plotted from field notes of actual surveys made by me or under my supervision, and that the same is true and correct to the best of my belief.</p> <p>07/20/2021 Date of Survey</p> <p>Signature and Seal of Professional Surveyor _____</p> <p><b>23006</b> 10/22/2021</p> <p>Certificate Number _____</p>

District I  
1625 N. French Dr., Hobbs, NM 88240  
Phone: (575) 393-6161 Fax: (575) 393-0720

District II  
811 S. First St., Artesia, NM 88210  
Phone: (575) 748-1283 Fax: (575) 748-9720

District III  
1000 Rio Brazos Road, Aztec, NM 87410  
Phone: (505) 334-6178 Fax: (505) 334-6170

District IV  
1220 S. St. Francis Dr., Santa Fe, NM 87505  
Phone: (505) 476-3460 Fax: (505) 476-3462

State of New Mexico  
Energy, Minerals & Natural Resources Department  
OIL CONSERVATION DIVISION  
1220 South St. Francis Dr.  
Santa Fe, NM 87505

Form C-102  
Revised August 1, 2011  
Submit one copy to appropriate  
District Office  
☐ AMENDED REPORT

## WELL LOCATION AND ACREAGE DEDICATION PLAT

<sup>1</sup> API Number	<sup>2</sup> Pool Code 64010	<sup>3</sup> Pool Name WELCH; BONE SPRING
<sup>4</sup> Property Code	<sup>5</sup> Property Name KNOB CREEK 17 20 FED COM 33	<sup>6</sup> Well Number 2H
<sup>7</sup> OGRID No. 4323	<sup>8</sup> Operator Name CHEVRON U.S.A. INC.	<sup>9</sup> Elevation 3239'

<sup>10</sup> Surface Location

UL or lot no.	Section	Township	Range	Lot Idn	Feet from the	North/South line	Feet from the	East/West line	County
O	8	26 SOUTH	27 EAST, N.M.P.M.		186'	SOUTH	2575'	EAST	EDDY

<sup>11</sup> Bottom Hole Location If Different From Surface

UL or lot no.	Section	Township	Range	Lot Idn	Feet from the	North/South line	Feet from the	East/West line	County
N	20	26 SOUTH	27 EAST, N.M.P.M.		25'	SOUTH	1585'	WEST	EDDY

<sup>12</sup> Dedicated Acres 640	<sup>13</sup> Joint or Infill	<sup>14</sup> Consolidation Code	<sup>15</sup> Order No.
--------------------------------------	-------------------------------	----------------------------------	-------------------------

No allowable will be assigned to this completion until all interests have been consolidated or a non-standard unit has been approved by the division.

<sup>16</sup> <b>PROPOSED FIRST TAKE POINT</b> X= 536,575' Y= 381,707' LAT. 32.049374° N LONG. 104.215285° W NAD 27 X= 577,759' Y= 381,764' LAT. 32.049496° N LONG. 104.215778° W NAD83/86	KNOB CREEK 17 20 FED COM 33 NO. 2H WELL X= 537,726' Y= 381,991' LAT. 32.050151° N LONG. 104.211570° W NAD 27 X= 578,909' Y= 382,048' LAT. 32.050273° N LONG. 104.212063° W NAD83/86 ELEV. +3239' NAVD88		<sup>17</sup> <b>OPERATOR CERTIFICATION</b> I hereby certify that the information contained herein is true and complete to the best of my knowledge and belief, and that this organization either owns a working interest or unreleased mineral interest in the land including the proposed bottom hole location or has a right to drill this well at this location pursuant to a contract with an owner of such a mineral or working interest, or to a voluntary pooling agreement or a compulsory pooling order heretofore entered by the division. Signature _____ Date _____ Printed Name _____ E-mail Address _____ <b>SURVEYOR CERTIFICATION</b> I hereby certify that the well location shown on this plat was plotted from field notes of actual surveys made by me or under my supervision, and that the same is true and correct to the best of my belief. 07/20/2021 Date of Survey Signature and Seal of Professional Surveyor  Certificate Number _____
<b>PROPOSED MID POINT</b> X= 536,651' Y= 376,479' LAT. 32.034999° N LONG. 104.215057° W NAD 27 X= 577,835' Y= 376,535' LAT. 32.035121° N LONG. 104.215550° W NAD83/86	<b>CORNER COORDINATES TABLE (NAD 27)</b> A - X=534988.20', Y=381810.94' B - X=536317.14', Y=381808.02' C - X=537646.07', Y=381805.09' D - X=540303.95', Y=381799.23' E - X=535066.16', Y=376480.27' F - X=536388.17', Y=376478.93' G - X=537710.13', Y=376477.58' H - X=540354.10', Y=376474.90' I - X=535082.62', Y=371149.70' J - X=536409.79', Y=371149.42' K - X=537736.96', Y=371149.15' L - X=540391.30', Y=371148.59'		
<b>PROPOSED LAST TAKE POINT</b> X= 536,667' Y= 371,249' LAT. 32.020623° N LONG. 104.215023° W NAD 27 X= 577,851' Y= 371,306' LAT. 32.020746° N LONG. 104.215516° W NAD83/86	<b>PROPOSED BOTTOM HOLE LOCATION</b> X= 536,668' Y= 371,174' LAT. 32.020417° N LONG. 104.215023° W NAD 27 X= 577,851' Y= 371,231' LAT. 32.020539° N LONG. 104.215516° W NAD83/86		



**District I**  
1625 N. French Dr., Hobbs, NM 88240  
Phone: (575) 393-6161 Fax: (575) 393-0720

**District II**  
811 S. First St., Artesia, NM 88210  
Phone: (575) 748-1283 Fax: (575) 748-9720

**District III**  
1000 Rio Brazos Road, Aztec, NM 87410  
Phone: (505) 334-6178 Fax: (505) 334-6170

**District IV**  
1220 S. St. Francis Dr., Santa Fe, NM 87505  
Phone: (505) 476-3460 Fax: (505) 476-3462

State of New Mexico  
Energy, Minerals & Natural Resources Department  
**OIL CONSERVATION DIVISION**  
1220 South St. Francis Dr.  
Santa Fe, NM 87505

Form C-102  
Revised August 1, 2011  
Submit one copy to appropriate  
District Office

☐ AMENDED REPORT

**WELL LOCATION AND ACREAGE DEDICATION PLAT**

<sup>1</sup> API Number	<sup>2</sup> Pool Code 64010	<sup>3</sup> Pool Name WELCH; BONE SPRING
<sup>4</sup> Property Code	<sup>5</sup> Property Name KNOB CREEK 17 20 FED COM 33	<sup>6</sup> Well Number 3H
<sup>7</sup> OGRID No. 4323	<sup>8</sup> Operator Name CHEVRON U.S.A. INC.	<sup>9</sup> Elevation 3240'

<sup>10</sup> Surface Location

UL or lot no.	Section	Township	Range	Lot Idn	Feet from the	North/South line	Feet from the	East/West line	County
O	8	26 SOUTH	27 EAST, N.M.P.M.		161'	SOUTH	2575'	EAST	EDDY

<sup>11</sup> Bottom Hole Location If Different From Surface

UL or lot no.	Section	Township	Range	Lot Idn	Feet from the	North/South line	Feet from the	East/West line	County
O	20	26 SOUTH	27 EAST, N.M.P.M.		25'	SOUTH	2310'	EAST	EDDY

<sup>12</sup> Dedicated Acres 640	<sup>13</sup> Joint or Infill	<sup>14</sup> Consolidation Code	<sup>15</sup> Order No.
--------------------------------------	-------------------------------	----------------------------------	-------------------------

No allowable will be assigned to this completion until all interests have been consolidated or a non-standard unit has been approved by the division.

<p><sup>16</sup></p> <p><b>PROPOSED FIRST TAKE POINT</b></p> <p>X= 537,995' Y= 381,704' LAT. 32.049361° N LONG. 104.210702° W</p> <p>X= 579,178' Y= 381,761' LAT. 32.049483° N LONG. 104.211196° W</p>	<p>KNOB CREEK 17 20 FED COM 33 NO. 3H WELL</p> <p>X= 537,726' Y= 381,966' LAT. 32.050082° N LONG. 104.211570° W</p> <p>X= 578,909' Y= 382,023' LAT. 32.050204° N LONG. 104.212064° W</p> <p>ELEV. +3240' NAVD88</p>		<p><b><sup>17</sup> OPERATOR CERTIFICATION</b></p> <p>I hereby certify that the information contained herein is true and complete to the best of my knowledge and belief, and that this organization either owns a working interest or unleased mineral interest in the land including the proposed bottom hole location or has a right to drill this well at this location pursuant to a contract with an owner of such a mineral or working interest, or to a voluntary pooling agreement or a compulsory pooling order heretofore entered by the division.</p> <p>Signature _____ Date _____</p> <p>Printed Name _____</p> <p>E-mail Address _____</p> <p><b>SURVEYOR CERTIFICATION</b></p> <p>I hereby certify that the well location shown on this plat was plotted from field notes of actual surveys made by me or under my supervision, and that the same is true and correct to the best of my belief.</p> <p>07/20/2021 Date of Survey</p> <p>Signature and Seal of Professional Surveyor</p> <p><b>ROBERT L. LASTRAPES</b> NEW MEXICO 23006 10/22/2021</p> <p>Certificate Number _____</p>
<p><b>PROPOSED MID POINT</b></p> <p>X= 538,044' Y= 376,477' LAT. 32.034991° N LONG. 104.210562° W</p> <p>X= 579,228' Y= 376,534' LAT. 32.035113° N LONG. 104.211055° W</p>	<p><b>CORNER COORDINATES TABLE (NAD 27)</b></p> <p>A - X=534988.20', Y=381810.94' B - X=537646.07', Y=381805.09' C - X=538975.01', Y=381802.16' D - X=540303.95', Y=381799.23' E - X=535066.16', Y=376480.27' F - X=537710.13', Y=376477.58' G - X=539032.12', Y=376476.24' H - X=540354.10', Y=376474.90' I - X=535082.62', Y=371149.70' J - X=537736.96', Y=371149.15' K - X=539064.13', Y=371148.87' L - X=540391.30', Y=371148.59'</p>	<p><b>PROPOSED BOTTOM HOLE LOCATION</b></p> <p>X= 538,081' Y= 371,174' LAT. 32.020412° N LONG. 104.210462° W</p> <p>X= 579,265' Y= 371,231' LAT. 32.020534° N LONG. 104.210955° W</p>	<p><b>18</b></p>

**District I**  
1625 N. French Dr., Hobbs, NM 88240  
Phone: (575) 393-6161 Fax: (575) 393-0720  
**District II**  
811 S. First St., Artesia, NM 88210  
Phone: (575) 748-1283 Fax: (575) 748-9720  
**District III**  
1000 Rio Brazos Road, Aztec, NM 87410  
Phone: (505) 334-6178 Fax: (505) 334-6170  
**District IV**  
1220 S. St. Francis Dr., Santa Fe, NM 87505  
Phone: (505) 476-3460 Fax: (505) 476-3462

State of New Mexico  
Energy, Minerals & Natural Resources Department  
**OIL CONSERVATION DIVISION**  
1220 South St. Francis Dr.  
Santa Fe, NM 87505

Form C-102  
Revised August 1, 2011  
Submit one copy to appropriate  
District Office

☐ AMENDED REPORT

**WELL LOCATION AND ACREAGE DEDICATION PLAT**

<sup>1</sup> API Number	<sup>2</sup> Pool Code 64010	<sup>3</sup> Pool Name WELCH; BONE SPRING
<sup>4</sup> Property Code	<sup>5</sup> Property Name KNOB CREEK 17 20 FED COM 33	<sup>6</sup> Well Number 4H
<sup>7</sup> OGRID No. 4323	<sup>8</sup> Operator Name CHEVRON U.S.A. INC.	<sup>9</sup> Elevation 3240'

<sup>10</sup> Surface Location

UL or lot no.	Section	Township	Range	Lot Idn	Feet from the	North/South line	Feet from the	East/West line	County
O	8	26 SOUTH	27 EAST, N.M.P.M.		136'	SOUTH	2576'	EAST	EDDY

<sup>11</sup> Bottom Hole Location If Different From Surface

UL or lot no.	Section	Township	Range	Lot Idn	Feet from the	North/South line	Feet from the	East/West line	County
P	20	26 SOUTH	27 EAST, N.M.P.M.		25'	SOUTH	1260'	EAST	EDDY

<sup>12</sup> Dedicated Acres	<sup>13</sup> Joint or Infill	<sup>14</sup> Consolidation Code	<sup>15</sup> Order No.
640			

No allowable will be assigned to this completion until all interests have been consolidated or a non-standard unit has been approved by the division.

<p><b>PROPOSED FIRST TAKE POINT</b></p> <p>X= 539,045' Y= 381,702' LAT. 32.049351° N LONG. 104.207313° W</p> <p>X= 580,229' Y= 381,759' LAT. 32.049473° N LONG. 104.207806° W</p>	<p>KNOB CREEK 17 20 FED COM 33 NO. 4H WELL</p> <p>X= 537,726' Y= 381,941' LAT. 32.050013° N LONG. 104.211570° W</p> <p>X= 578,909' Y= 381,998' LAT. 32.050135° N LONG. 104.212064° W</p> <p>ELEV. +3240' NAVD88</p>		<p><b><sup>17</sup> OPERATOR CERTIFICATION</b></p> <p>I hereby certify that the information contained herein is true and complete to the best of my knowledge and belief, and that this organization either owns a working interest or unleased mineral interest in the land including the proposed bottom hole location or has a right to drill this well at this location pursuant to a contract with an owner of such a mineral or working interest, or to a voluntary pooling agreement or a compulsory pooling order heretofore entered by the division.</p> <p>Signature _____ Date _____</p> <p>Printed Name _____</p> <p>E-mail Address _____</p>
<p><b>PROPOSED MID POINT</b></p> <p>X= 539,094' Y= 376,476' LAT. 32.034985° N LONG. 104.207173° W</p> <p>X= 580,278' Y= 376,533' LAT. 32.035107° N LONG. 104.207666° W</p>	<p><b>CORNER COORDINATES TABLE (NAD 27)</b></p> <p>A - X=534988.20', Y=381810.94' B - X=537646.07', Y=381805.09' C - X=538975.01', Y=381802.16' D - X=540303.95', Y=381799.23' E - X=535066.16', Y=376480.27' F - X=537710.13', Y=376477.58' G - X=539032.12', Y=376476.24' H - X=540354.10', Y=376474.90' I - X=535082.62', Y=371149.70' J - X=537736.96', Y=371149.15' K - X=539064.13', Y=371148.87' L - X=540391.30', Y=371148.59'</p>	<p>Sec. 8</p> <p>Sec. 17</p> <p>Sec. 20</p> <p>Proposed Last Take Point 100' FSL, 1260' FEL</p>	<p>Signature _____ Date _____</p> <p>Printed Name _____</p> <p>E-mail Address _____</p>
<p><b>PROPOSED LAST TAKE POINT</b></p> <p>X= 539,131' Y= 371,249' LAT. 32.020614° N LONG. 104.207075° W</p> <p>X= 580,314' Y= 371,306' LAT. 32.020737° N LONG. 104.207568° W</p>	<p><b>PROPOSED BOTTOM HOLE LOCATION</b></p> <p>X= 539,131' Y= 371,174' LAT. 32.020408° N LONG. 104.207074° W</p> <p>X= 580,315' Y= 371,231' LAT. 32.020530° N LONG. 104.207567° W</p>	<p>Sec. 8</p> <p>Sec. 17</p> <p>Sec. 20</p> <p>Proposed Last Take Point 100' FSL, 1260' FEL</p>	<p><b>SURVEYOR CERTIFICATION</b></p> <p>I hereby certify that the well location shown on this plat was plotted from field notes of actual surveys made by me or under my supervision, and that the same is true and correct to the best of my belief.</p> <p>07/20/2021 Date of Survey</p> <p>Signature and Seal of Professional Surveyor</p> <p><b>ROBERT L. LASTRAPES</b> NEW MEXICO 23006 10/22/2021 PROFESSIONAL SURVEYOR</p> <p>Certificate Number _____</p>



January 4, 2024

Deana M. Bennett  
505.848.1834  
dmb@modrall.com

**VIA CERTIFIED MAIL**

**TO AFFECTED PARTIES**

**Re: Application of Chevron U.S.A. Inc. For administrative approval of a 2,560-acre, more or less, nonstandard spacing unit in the Bone Spring formation comprised of Sections 5, 8, 17, and 20, Township 26 South, Range 27 East, Eddy County.**

Dear Sir or Madam:

Enclosed is a copy of the above referenced application filed with the New Mexico Conservation Division on this date. Any objections that you have to this application must be filed in writing with the New Mexico Oil Conservation Division, 1220 South St. Francis Drive, Santa Fe, New Mexico 87505, within twenty (20) days from the date the Division receives the above referenced application. If no objection is received within this twenty-day period, the application may be approved administratively by the Division.

If you have any questions concerning this application, please contact:

Andrew Tabije  
Facilities Engineer  
Chevron U.S.A. Inc.  
andrew.tabije@chevron.com  
Tel 713 372 4017

Sincerely,

A handwritten signature in blue ink that reads 'Deana M. Bennett'.

Deana M. Bennett  
*Attorney for Chevron U.S.A. Inc.*

**Exhibit D**

**List of Offset Operators/Notified Parties**

Cimarex Energy Co.  
6001 Deauville Blvd. Ste. 300N  
Midland, TX 79706

COG Operating LLC  
600 W. Illinois Ave.  
Midland, TX 79701

EOG Resources  
5509 Champions Dr.  
Midland, TX 79706

OXY USA Inc.  
5 Greenway Plaza Ste. 110  
Houston, TX 77046

Premier Oil & Gas Inc.  
P.O. Box 837205  
Richardson, TX 75083

Bureau of Land Management  
301 Dinosaur Trail  
Santa Fe, NM 87508

State Land Office  
310 Old Santa Fe Trail  
Santa Fe, NM 87501





## List of Notfied Parties

Tract Letter on Offsetting Acreage Map	Offsetting Sections	Operator(s) (if not Chevron)	WIOs if no operator and if not Chevron	Date Notice Letter sent
A	Sec 31, T25S-R27E	COG Operating LLC	N/A	12/20/2023
B	Sec 32, T25S-R27E	COG Operating LLC Cimarex Energy Co.	N/A	12/20/2023
C	Sec 33, T25S-R27E	COG Operating LLC	N/A	12/20/2023
D	Sec 4, T26S-R27E	COG Operating LLC Oxy USA Inc.	N/A	12/20/2023
E	Sec 9, T26S-R27E	N/A	N/A	12/20/2023
F	Sec 16, T26S-R27E	COG Operating LLC Premier Oil & Gas Inc.	N/A	12/20/2023
G	Sec 21, T26S-R27E	N/A	N/A	12/20/2023
H	Sec 28, T26S-R27E	Cimarex Energy Co.	N/A	12/20/2023
I	Sec 29, T26S-R27E	Cimarex Energy Co.	N/A	12/20/2023
J	Sec 30, T26S-R27E	COG Operating LLC	N/A	12/20/2023
K	Sec 19, T26S-R27E	COG Operating LLC	N/A	12/20/2023
L	Sec 18, T26S-R27E	COG Operating LLC	N/A	12/20/2023
M	Sec 7, T26S-R27E	COG Operating LLC	N/A	12/20/2023
N	Sec 6, T26S-R27E	EOG Resources	N/A	12/20/2023
Bureau of Land Management				12/20/2023
State Land Office				12/20/2023

Karlene Schuman  
 Modrall Sperling Roehl Harris & Sisk P.A.  
 500 Fourth Street, Suite 1000  
 Albuquerque NM 87102

PS Form 3877

Type of Mailing: CERTIFIED MAIL  
 01/04/2024

Firm Mailing Book ID: 258242

Line	USPS Article Number	Name, Street, City, State, Zip	Postage	Service Fee	RR Fee	Rest.Del.Fee	Reference Contents
1	9314 8699 0430 0115 3607 58	Cimarex Energy Co. 6001 Deauville Blvd., Ste 300N. Midland TX 79706	\$1.83	\$4.35	\$2.20	\$0.00	83420.0050. Notice
2	9314 8699 0430 0115 3607 65	COG Operating LLC 600 W. Illinois Ave. Midland TX 79701	\$1.83	\$4.35	\$2.20	\$0.00	83420.0050. Notice
3	9314 8699 0430 0115 3607 72	EOG Resources 5509 Champions Dr. Midland TX 79706	\$1.83	\$4.35	\$2.20	\$0.00	83420.0050. Notice
4	9314 8699 0430 0115 3607 89	OXY USA Inc. 5 Greenway Plaza Ste. 110 Houston TX 77046	\$1.83	\$4.35	\$2.20	\$0.00	83420.0050. Notice
5	9314 8699 0430 0115 3607 96	Premier Oil & Gas Inc. PO Box 837205 Richardson TX 75083	\$1.83	\$4.35	\$2.20	\$0.00	83420.0050. Notice
6	9314 8699 0430 0115 3608 02	Bureau of Land Management 301 Dinosuar Trail Santa Fe NM 87508	\$1.83	\$4.35	\$2.20	\$0.00	83420.0050. Notice
7	9314 8699 0430 0115 3608 19	State of New Mexico - State Land office 310 Old Santa Fe Trail Santa Fe NM 87501	\$1.83	\$4.35	\$2.20	\$0.00	83420.0050. Notice
Totals:			\$12.81	\$30.45	\$15.40	\$0.00	
			Grand Total:		\$58.66		

List Number of Pieces  
Listed by Sender

Total Number of Pieces  
Received at Post Office

Postmaster:  
Name of receiving employee

Dated:

7



January 4, 2024

Deana M. Bennett  
505.848.1834  
dmb@modrall.com

**VIA CERTIFIED MAIL**

**TO AFFECTED PARTIES**

**Re: Application of Chevron U.S.A. Inc. For administrative approval of a 2,560-acre, more or less, nonstandard spacing unit in the Bone Spring formation comprised of Sections 5, 8, 17, and 20, Township 26 South, Range 27 East, Eddy County.**

Dear Sir or Madam:

Enclosed is a copy of the above referenced application filed with the New Mexico Conservation Division on this date. Any objections that you have to this application must be filed in writing with the New Mexico Oil Conservation Division, 1220 South St. Francis Drive, Santa Fe, New Mexico 87505, within twenty (20) days from the date the Division receives the above referenced application. If no objection is received within this twenty-day period, the application may be approved administratively by the Division.

If you have any questions concerning this application, please contact:

Andrew Tabije  
Facilities Engineer  
Chevron U.S.A. Inc.  
andrew.tabije@chevron.com  
Tel 713 372 4017

Sincerely,

A handwritten signature in blue ink that reads 'Deana M. Bennett'.

Deana M. Bennett  
*Attorney for Chevron U.S.A. Inc.*

**Exhibit D**

**List of Offset Operators/Notified Parties**

Cimarex Energy Co.  
6001 Deauville Blvd. Ste. 300N  
Midland, TX 79706

COG Operating LLC  
600 W. Illinois Ave.  
Midland, TX 79701

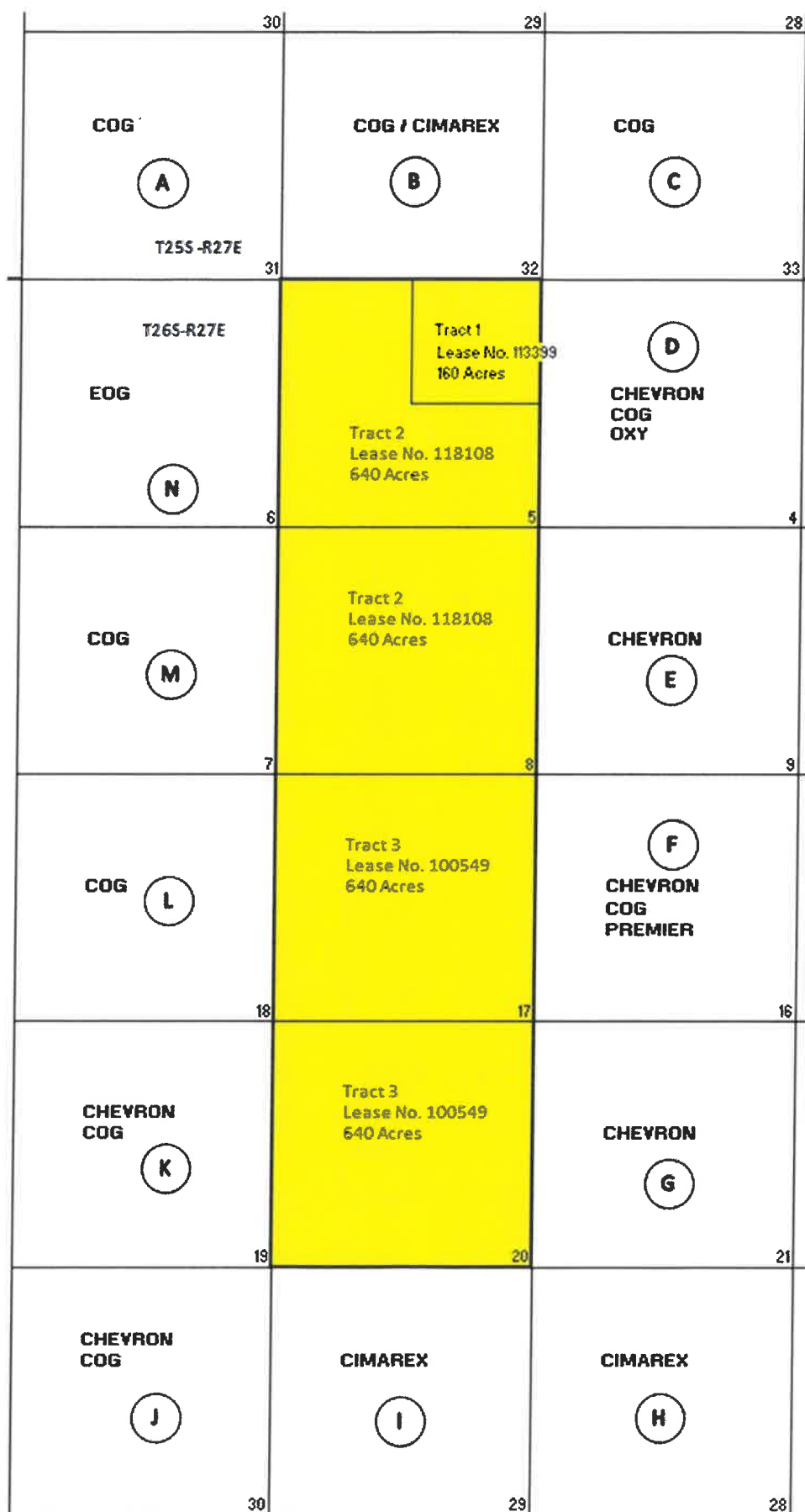
EOG Resources  
5509 Champions Dr.  
Midland, TX 79706

OXY USA Inc.  
5 Greenway Plaza Ste. 110  
Houston, TX 77046

Premier Oil & Gas Inc.  
P.O. Box 837205  
Richardson, TX 75083

Bureau of Land Management  
301 Dinosaur Trail  
Santa Fe, NM 87508

State Land Office  
310 Old Santa Fe Trail  
Santa Fe, NM 87501



## List of Notfied Parties

Tract Letter on Offsetting Acreage Map	Offsetting Sections	Operator(s) (if not Chevron)	WIOs if no operator and if not Chevron	Date Notice Letter sent
A	Sec 31, T25S-R27E	COG Operating LLC	N/A	12/20/2023
B	Sec 32, T25S-R27E	COG Operating LLC Cimarex Energy Co.	N/A	12/20/2023
C	Sec 33, T25S-R27E	COG Operating LLC	N/A	12/20/2023
D	Sec 4, T26S-R27E	COG Operating LLC Oxy USA Inc.	N/A	12/20/2023
E	Sec 9, T26S-R27E	N/A	N/A	12/20/2023
F	Sec 16, T26S-R27E	COG Operating LLC Premier Oil & Gas Inc.	N/A	12/20/2023
G	Sec 21, T26S-R27E	N/A	N/A	12/20/2023
H	Sec 28, T26S-R27E	Cimarex Energy Co.	N/A	12/20/2023
I	Sec 29, T26S-R27E	Cimarex Energy Co.	N/A	12/20/2023
J	Sec 30, T26S-R27E	COG Operating LLC	N/A	12/20/2023
K	Sec 19, T26S-R27E	COG Operating LLC	N/A	12/20/2023
L	Sec 18, T26S-R27E	COG Operating LLC	N/A	12/20/2023
M	Sec 7, T26S-R27E	COG Operating LLC	N/A	12/20/2023
N	Sec 6, T26S-R27E	EOG Resources	N/A	12/20/2023
Bureau of Land Management				12/20/2023
State Land Office				12/20/2023



Karlene Schuman  
 Modrall Sperling Roehl Harris & Sisk P.A.  
 500 Fourth Street, Suite 1000  
 Albuquerque NM 87102

PS Form 3877

Type of Mailing: CERTIFIED MAIL  
 01/04/2024

Firm Mailing Book ID: 258242

Line	USPS Article Number	Name, Street, City, State, Zip	Postage	Service Fee	RR Fee	Rest.Del.Fee	Reference Contents
1	9314 8699 0430 0115 3607 58	Cimarex Energy Co. 6001 Deauville Blvd., Ste 300N. Midland TX 79706	\$1.83	\$4.35	\$2.20	\$0.00	83420.0050. Notice
2	9314 8699 0430 0115 3607 65	COG Operating LLC 600 W. Illinois Ave. Midland TX 79701	\$1.83	\$4.35	\$2.20	\$0.00	83420.0050. Notice
3	9314 8699 0430 0115 3607 72	EOG Resources 5509 Champions Dr. Midland TX 79706	\$1.83	\$4.35	\$2.20	\$0.00	83420.0050. Notice
4	9314 8699 0430 0115 3607 89	OXY USA Inc. 5 Greenway Plaza Ste. 110 Houston TX 77046	\$1.83	\$4.35	\$2.20	\$0.00	83420.0050. Notice
5	9314 8699 0430 0115 3607 96	Premier Oil & Gas Inc. PO Box 837205 Richardson TX 75083	\$1.83	\$4.35	\$2.20	\$0.00	83420.0050. Notice
6	9314 8699 0430 0115 3608 02	Bureau of Land Management 301 Dinosuar Trail Santa Fe NM 87508	\$1.83	\$4.35	\$2.20	\$0.00	83420.0050. Notice
7	9314 8699 0430 0115 3608 19	State of New Mexico - State Land office 310 Old Santa Fe Trail Santa Fe NM 87501	\$1.83	\$4.35	\$2.20	\$0.00	83420.0050. Notice
Totals:			<u>\$12.81</u>	<u>\$30.45</u>	<u>\$15.40</u>	<u>\$0.00</u>	
			Grand Total:			<u>\$58.66</u>	

List Number of Pieces  
Listed by Sender

Total Number of Pieces  
Received at Post Office

Postmaster:  
Name of receiving employee

Dated:

7



**Andrew Tabije**  
Facilities Engineer  
Mid-Continent Business Unit

Director Fuge and OCD Engineering Bureau  
Oil Conservation Division  
Energy, Minerals, and Native Resources Department  
1220 South Sait Francis Drive  
Santa Fe, NM 87505

**Re: Application of Chevron U.S.A. Inc. for administrative approval of a 2,560-acre, more or less, non-standard spacing unit in the Bone Spring formation comprised of Sections 5, 8, 17, and 20, Township 26 South, Range 27 East, Eddy County.**

Dear Director Fuge/OCD Engineering Bureau:

Chevron U.S.A. Inc. ("Chevron"), OGRID number 4323, respectfully requests administrative approval of a 2560-acre, more or less, non-standard unit ("NSU") comprised of Sections 5, 8, 17, and 20, Township 26 South, Range 27 East, Eddy County, New Mexico. The NSU would be dedicated to the following wells (the "Wells"):

<u>Well Name</u>	<u>API Number</u>
Makers Mark 8 5 Fed Com 1H	30-015-49616
Makers Mark 8 5 Fed Com 2H	30-015-49615
Makers Mark 8 5 Fed Com 3H	30-015-49617
Makers Mark 8 5 Fed Com 4H	30-015-49618
Makers Mark 8 5 Fed Com 5H	30-015-49619
Knob Creek 17 20 Fed Com 1H*	Pending
Knob Creek 17 20 Fed Com 2H*	Pending
Knob Creek 17 20 Fed Com 3H*	Pending
Knob Creek 17 20 Fed Com 4H*	Pending

\*Final well name subject to change

The Makers Mark wells are existing wells and target the Bone Spring formation. The Knob Creek wells are planned wells that will also target the Bone Spring formation. Chevron has existing Wolfcamp formation wells within these same four sections that are subject to an approved 2,560-acre federal Communitization Agreement (Contract No. NM 138618). The BLM Reservoir Management Group has indicated that it can approve a 2,560-acre Communitization Agreement for the Bone Spring formation for the same subject lands so long as there is a matching NSU (See email from Kyle Paradis, Branch Chief – Reservoir Management, attached hereto). All lands included in the NSU subject to this application are federally owned.

The Makers Mark and Knob Creek wells are part a single pool: the WELCH; BONE SPRING (64010). This pool follows the statewide spacing rules.

Chevron U.S.A. Inc.  
1400 Smith Street, Houston, TX 77002  
Tel 713 372 4017  
andrew.tabije@chevron.com



If Chevron was to follow the statewide rules, Chevron would have to have four units to have standard units. The four standard units would be as follows: W/2 of Sections 5 and 8, E/2 of Sections 5 and 8, W/2 of Sections 17 and 20, and E/2 of Section 17 and 20. In this NSU application, Chevron seeks a single 2,560-acre horizontal spacing unit for the Bone Spring Communitization Agreement which will match the existing Wolfcamp Communitization Agreement. All working interest owners and record title owners to the Bone Spring formation within the 2,560-acre development area have executed the proposed Communitization Agreement.

Approval of the NSU will allow Chevron to use existing surface facilities, which will in turn reduce surface disturbance by consolidating roads, tanks, and pipelines. Chevron already has existing pipelines, and existing central tank battery, and existing road, and existing third-party takeaway facilities on this acreage. If Chevron's NSU application is approved, the Wells will be able to use this existing infrastructure, eliminating any need for further surface disturbances. Additionally, approval of Chevron's application promotes effective well spacing and will allow Chevron to commingle production.

Conversely, if Chevron's NSU application is not approved, Chevron will need to construct additional pipelines, roads, and facilities. Included with this application is Exhibit A showing that no additional facilities are needed for a non-standard unit and the additional required infrastructure needed if Chevron has to develop the Wells using standard spacing.

Exhibit B compares and contrasts, in table format, the reduced surface acreage and the cost savings that will occur if the NSU is approved. Developing the acreage as a single, non-standard unit will result in 16.8 acres less surface disturbance that is Chevron has to develop the acreage using standard units. If Chevron's application is approved, total capital costs would be significantly reduced by \$26.1MM because no additional infrastructure would be required to operate the single, non-standard unit.

It is my opinion that approval of the NSU is in the best interest of conservation, prevention of waste, and protection of correlative rights.

Thank you for your consideration. Should you have any questions, please contact me at [andrew.tabije@chevron.com](mailto:andrew.tabije@chevron.com)

Sincerely,

Andrew Tabije  
Facilities Engineer

# Major Facilities Benefit for NSU

## Exhibit A

✓ If non-standard spacing unit achieved, ability to commingle and produce into existing CTB and existing trains. Significant savings towards reducing footprint disturbance, limiting additional unnecessary surface equipment / emissions waste, and accelerating production for stakeholders

• If non-standard spacing unit is not achieved:

- Separate individual spacing units result in additional FMP requirements
- Additional resulting sub-trains at existing Central Tank Battery facility (CTB) is not feasible, due to best assessment of limitations / risks / requirements (including infrastructure constraint and topography). Will then require a new CTB facility with multiple sub-trains
- Impact:
  - Significant additional disturbance in a sensitive and constrained area for new CTB: est. **additional ~350,000 sq ft disturbance** for CTB + **possible additional >2640ft length ROW disturbance** for major infrastructure corridor (roads, pipelines, power)
  - Major cost addition – est. **additional >\$25MM** capital expenditure for new CTB including infrastructure

If NSU not approved, undesirable additional CTB and disturbance  
Early / preliminary and for demonstration. Additional CTB+ROW Subject to further scoping; not yet reviewed external authorities

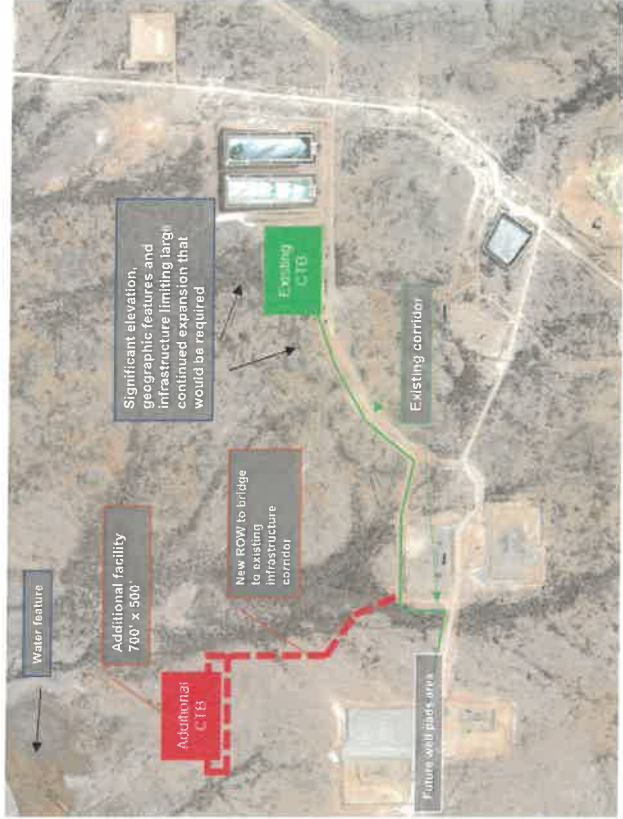


Exhibit B

# Major Facilities Benefit for NSU

Summary Table, Shared Facilities Incremental Costs

Scenario	Additional CTB Costs (\$M)	Additional Infrastructure Cost (Road, Power, Pipeline) (\$M)	Additional Total Capital (\$MM)	Est. Disturbance (Acres)
Non-Standard Spacing Unit	n/a	n/a	n/a	-
Standard Spacing Unit	\$23,385	\$2,808	\$26,193	16.8
Savings			\$26,193	16.8





**From:** [Paradis, Kyle O](#)  
**To:** [Fleming, Alexandra \(Zandra\)](#)  
**Cc:** [Pazer, Gregg](#)  
**Subject:** **[\*\*EXTERNAL\*\*]** Re: [EXTERNAL] RE: 2560 acre Comm Agreement question  
**Date:** Tuesday, July 18, 2023 11:14:29 AM

---

Hello Gregg and Zandra,

My apologies for the delayed response, I was on leave, then travel for work, then some more leave. Anyway, Yes, we can approve a 4 section BS CA that would match the existing 4 section WC CA. We would need to see the spacing unit from OCD is for all 4 sections, but yes I don't have objections to 2560 CAs.

Thank you,

Kyle Paradis  
Branch Chief Reservoir Management  
Bureau of Land Management  
(406) 223-4820

---

**From:** Fleming, Alexandra (Zandra) <Alexandra.Fleming@chevron.com>  
**Sent:** Tuesday, July 18, 2023 7:04 AM  
**To:** Paradis, Kyle O <kparadis@blm.gov>  
**Cc:** Pazer, Gregg <gpazer@chevron.com>  
**Subject:** [EXTERNAL] RE: 2560 acre Comm Agreement question

**This email has been received from outside of DOI - Use caution before clicking on links, opening attachments, or responding.**

Morning Kyle,

Any chance you've been able to review Gregg's email below? We chatted briefly about submitting a 4 section CA for the Bone Spring to match the 4 section Wolfcamp CA in our HayHurst NM area, after the Javelina Unit discussion.

Many thanks!  
Zandra

**From:** Pazer, Gregg <gpazer@chevron.com>  
**Sent:** Wednesday, July 12, 2023 9:36 AM  
**To:** Paradis, Kyle O <kparadis@blm.gov>  
**Cc:** Fleming, Alexandra (Zandra) <Alexandra.Fleming@chevron.com>  
**Subject:** RE: 2560 acre Comm Agreement question

Hi Kyle,

Just checking in to see if you have any feedback to our request to form a 2560 acre CA in Eddy County, NM.

Thanks,

Gregg P.

---

**From:** Pazer, Gregg  
**Sent:** Thursday, June 29, 2023 9:59 AM  
**To:** Paradis, Kyle O <[kparadis@blm.gov](mailto:kparadis@blm.gov)>  
**Cc:** Fleming, Alexandra (Zandra) <[Alexandra.Fleming@chevron.com](mailto:Alexandra.Fleming@chevron.com)>  
**Subject:** 2560 acre Comm Agreement question

Hi Kyle,

Following up on our discussion yesterday, attached is the existing 2,560 acre CA covering the Wolfcamp formation in Sections 5, 8, 17 and 20 in T26S R27E Eddy County, NM. As mentioned, Chevron plans to spud 2-mile wells in the Bone Spring formation going south to north in sections 5 and 8 next month and has future plans to drill addition 2-mile wells going north to south into section 17 and 20 next year (APDs for the wells in sections 17 and 20 are awaiting approval). Also attached are copies of the plats for two of the five wells that Chevron plans to drill in Sections 5 and 8 as well as plats for two of the four wells planned for Sections 17 and 20.

We'd like to submit a CA covering the Bone Spring formation for all four sections so that it will match the existing Wolfcamp CA and avoid the need for the filing of a second CA next year. Is this something that the BLM can approve?

Thanks,

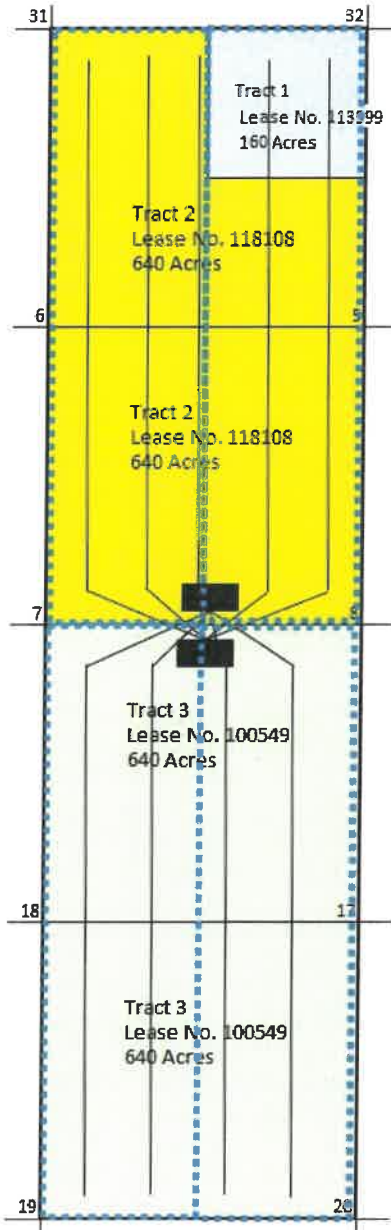
**Gregg Pazer**  
Land Representative  
[gpazer@chevron.com](mailto:gpazer@chevron.com)

**Mid-Continent Business Unit**  
Chevron U.S.A. Inc.  
1400 Smith St.  
Houston, TX 77002  
Tel 713 372 9915  
Mobile 412 592 8964

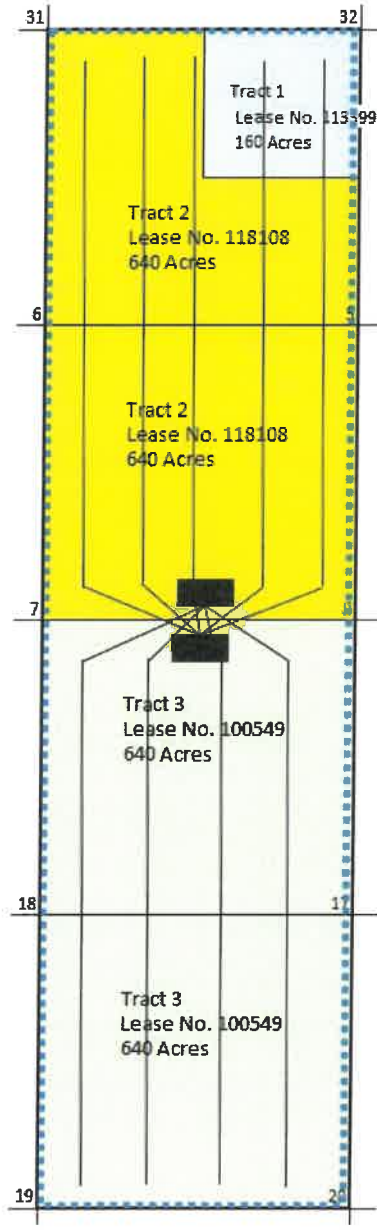
**MAKERS MARK 5-8-17-20 FED COM AREA**

**Standard Spacing vs. Non-Standard Spacing**

**Standard Spacing = 4 HSUs = 4 Fed Com Agreements**



**Non-Standard Spacing = 1 HSU = 1 Fed Com Agreement**



**District I**  
1625 N. French Dr., Hobbs, NM 88240  
Phone:(575) 393-6161 Fax:(575) 393-0720  
**District II**  
811 S. First St., Artesia, NM 88210  
Phone:(575) 748-1283 Fax:(575) 748-9720  
**District III**  
1000 Rio Brazos Rd., Aztec, NM 87410  
Phone:(505) 334-6178 Fax:(505) 334-6170  
**District IV**  
1220 S. St Francis Dr., Santa Fe, NM 87505  
Phone:(505) 476-3470 Fax:(505) 476-3462

State of New Mexico  
Energy, Minerals and Natural Resources  
Oil Conservation Division  
1220 S. St Francis Dr.  
Santa Fe, NM 87505

CONDITIONS  
  
Action 300019

CONDITIONS

Operator: CHEVRON U S A INC 6301 Deauville Blvd Midland, TX 79706	OGRID: 4323
	Action Number: 300019
	Action Type: [UF-NSP] Non-Standard Proration (NSP)

CONDITIONS

Created By	Condition	Condition Date
llowe	None	1/8/2024