

ID NO. 378520

NSP - 2223

Revised March 23, 2017

RECEIVED: 08/27/24	REVIEWER:	TYPE:	APP NO: pLEL2424739462
---------------------------	-----------	-------	-------------------------------

ABOVE THIS TABLE FOR OCD DIVISION USE ONLY

NEW MEXICO OIL CONSERVATION DIVISION
 - Geological & Engineering Bureau -
 1220 South St. Francis Drive, Santa Fe, NM 87505

**ADMINISTRATIVE APPLICATION CHECKLIST**

THIS CHECKLIST IS MANDATORY FOR ALL ADMINISTRATIVE APPLICATIONS FOR EXCEPTIONS TO DIVISION RULES AND REGULATIONS WHICH REQUIRE PROCESSING AT THE DIVISION LEVEL IN SANTA FE

Applicant: EOG Resources, Inc. **OGRID Number:** 7377
Well Name: AIR BISCUIT 16 FED COM wells **API:** 30-025-various
Pool: WC-025 G-09 S233216K, UPR Wolfcamp **Pool Code:** 98166

SUBMIT ACCURATE AND COMPLETE INFORMATION REQUIRED TO PROCESS THE TYPE OF APPLICATION INDICATED BELOW

1) TYPE OF APPLICATION: Check those which apply for [A]

A. Location – Spacing Unit – Simultaneous Dedication

☐ NSL

☐ NSP (PROJECT AREA)

☒ NSP (PRORATION UNIT)

☐ SD

B. Check one only for [I] or [II]

[I] Commingling – Storage – Measurement

☐ DHC

☐ CTB

☐ PLC

☐ PC

☐ OLS

☐ OLM

[II] Injection – Disposal – Pressure Increase – Enhanced Oil Recovery

☐ WFX

☐ PMX

☐ SWD

☐ IPI

☐ EOR

☐ PPR

2) NOTIFICATION REQUIRED TO: Check those which apply.

A. ☒ Offset operators or lease holders

B. ☐ Royalty, overriding royalty owners, revenue owners

C. ☐ Application requires published notice

D. ☒ Notification and/or concurrent approval by SLO

E. ☒ Notification and/or concurrent approval by BLM

F. ☐ Surface owner

G. ☐ For all of the above, proof of notification or publication is attached, and/or,

H. ☐ No notice required

FOR OCD ONLY

☐ Notice Complete

☐ Application
Content
Complete

3) CERTIFICATION: I hereby certify that the information submitted with this application for administrative approval is **accurate** and **complete** to the best of my knowledge. I also understand that **no action** will be taken on this application until the required information and notifications are submitted to the Division.

Note: Statement must be completed by an individual with managerial and/or supervisory capacity.

August 27, 2024

Date

Paula M. Vance

Print or Type Name

505-988-4421

Phone Number

pmvance@hollandhart.com

Signature

e-mail Address



Paula M. Vance
Associate
Phone (505) 954-7286
PMVance@hollandhart.com

August 27, 2024

VIA ONLINE FILING

Gerasimos Razatos, Division Director (Acting)
Oil Conservation Division
Energy, Minerals and Natural
Resources Department
1220 South Saint Francis Drive
Santa Fe, New Mexico 87505

Re: Application of EOG Resources, Inc. for administrative approval of a 1,280-acre non-standard horizontal spacing unit in the WC-025 G-09 S233216K, UPR Wolfcamp Pool [98166] comprised of All of Sections 16 and 21, Township 22 South, Range 32 East, NMPM, Lea County, New Mexico.

Dear Mr. Razatos:

Pursuant to 19.15.16.15(B)(5) NMAC, EOG Resources, Inc. ("EOG") (OGRID No. 7377) seeks administrative approval of a non-standard 1,280-acre horizontal spacing unit comprised of All of Sections 16 and 21, Township 22 South, Range 32 East, NMPM, Lea County, New Mexico. The proposed non-standard spacing will be developed by the following wells:

- **Air Biscuit 16 Fed Com #701H** (API No. 30-025-PENDING)
- **Air Biscuit 16 Fed Com #702H** (API No. 30-025-PENDING)
- **Air Biscuit 16 Fed Com #703H** (API No. 30-025-PENDING)
- **Air Biscuit 16 Fed Com #704H** (API No. 30-025-PENDING)
- **Air Biscuit 16 Fed Com #705H** (API No. 30-025-PENDING)
- **Air Biscuit 16 Fed Com #706H** (API No. 30-025-PENDING)
- **Air Biscuit 16 Fed Com #707H** (API No. 30-025-PENDING)
- **Air Biscuit 16 Fed Com #708H** (API No. 30-025-PENDING)
- **Air Biscuit 16 Fed Com #741H** (API No. 30-025-PENDING)
- **Air Biscuit 16 Fed Com #742H** (API No. 30-025-PENDING)
- **Air Biscuit 16 Fed Com #743H** (API No. 30-025-PENDING)

The Division has placed all wells into the WC-025 G-09 S233216K, UPR Wolfcamp Pool

T 505.988.4421 F 505.983.6043
110 North Guadalupe, Suite 1, Santa Fe, NM 87501-1849
Mail to: P.O. Box 2208, Santa Fe, NM 87504-2208
www.hollandhart.com

Alaska
Colorado
Idaho

Montana
Nevada
New Mexico

Utah
Washington, D.C.
Wyoming

[98166]. The acreage included in the non-standard spacing unit will be the subject of a single Communitization Agreement.

EOG seeks administrative approval of a non-standard spacing unit to develop the acreage as a single communitized area. Doing so allows EOG to efficiently locate surface facilities, reduce surface disturbance, consolidate roads, tanks and pipelines, and promote effective well spacing, thereby promoting conservation and preventing waste. A single surface facility also reduces emissions from multiple tank batteries. Division Rules contemplate and encourage oil and gas development, where possible, in enlarged areas of common ownership to minimize surface disturbance and to promote efficient well spacing, *see*, e.g., 19.15.16.7.P NMAC; 19.15.16.15.B(8) NMAC; 19.15.16.15.C(7) NMAC, and authorize administrative approval of such a request, *see* 19.15.16.15(B)(5) NMAC.

Exhibit A is a map showing the proposed non-standard spacing unit, the subject leases, and the proposed wells.

Exhibit B is a copy the Well Location and Acreage Dedication Plat (C-102) for each of the wells within the proposed non-standard spacing unit.

Exhibit C is a lease map showing the notice tracts for the proposed non-standard spacing unit.

Exhibit D is a cross section exhibit showing the Wolfcamp target for these subject wells.

Exhibit E is a spreadsheet listing all “affected persons”¹ in the affected offset acreage to be noticed. Exhibit E also includes tracking information demonstrating that each of the affected persons was sent a copy of this application with all attachments by certified mail advising that any objections must be filed in writing with the Division within 20 days from the date the Division receives the application. A copy of this application has been provided to the State Land Office and Bureau of Land Management since state and federal lands are involved.

Your attention to this matter is appreciated.

Sincerely,

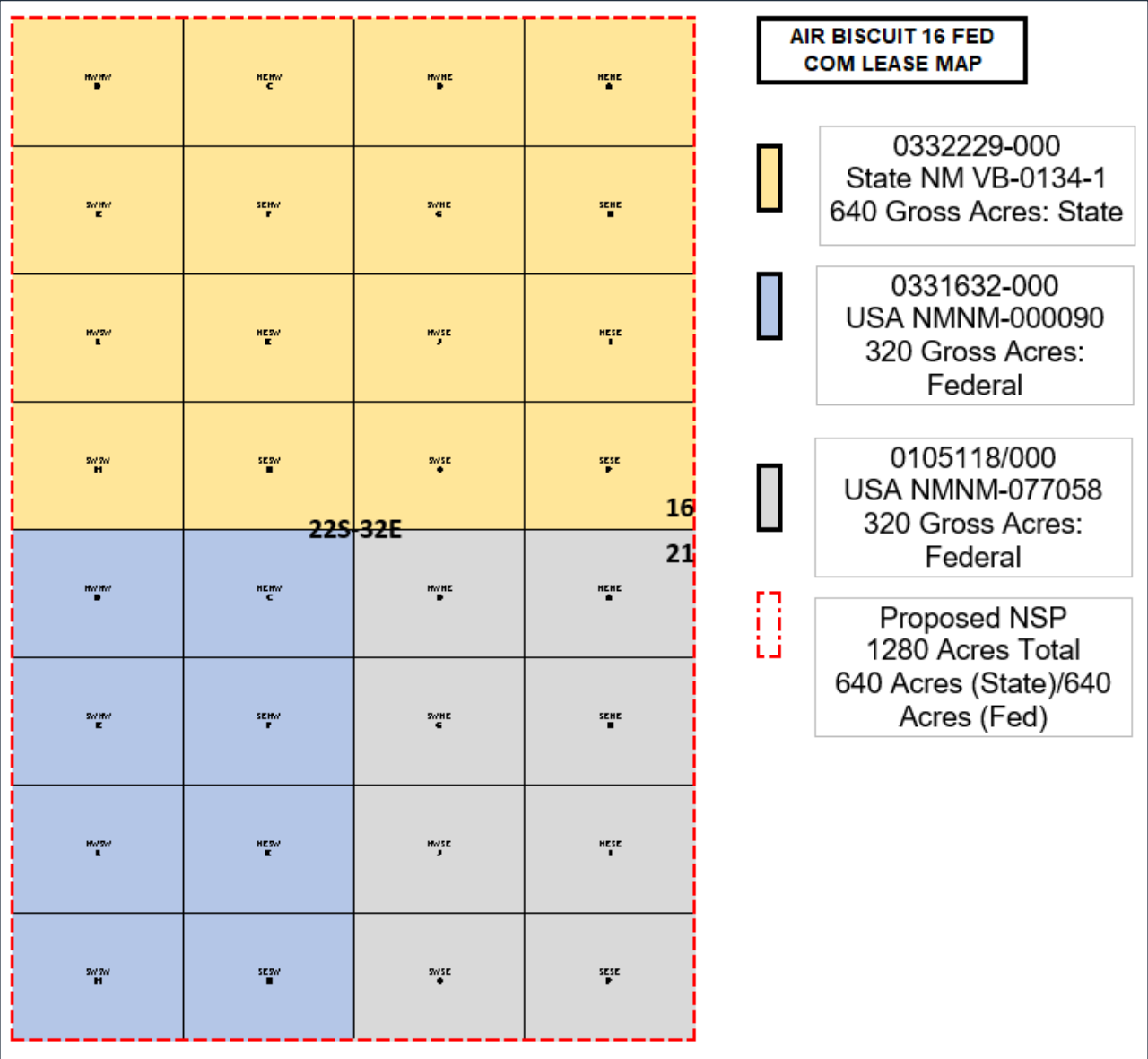


Paula M. Vance
ATTORNEY FOR
EOG RESOURCES, INC.

¹ See NMAC §§ 19.15.2.7.A(8) [defining “affected persons” as, “in the absence of an operator, or with respect to an application wherein the operator of the spacing unit or identified tract is the applicant, each working interest owner”] and 19.15.4.12.A(2)(a).

Proposed Non-Standard Horizontal Spacing Unit Air Biscuit 16 Fed Com: Sections 16 and 21, T22S-R32E Lease Summary

EXHIBIT
A



DISTRICT I
1625 N. French Dr., Hobbs, NM 88240
Phone: (575) 393-6161 Fax: (575) 393-0720
DISTRICT II
811 S. First St., Artesia, NM 88210
Phone: (575) 748-1283 Fax: (575) 748-0720
DISTRICT III
1000 Rio Brazos Rd., Artesia, NM 87410
Phone: (505) 334-6178 Fax: (505) 334-6170
DISTRICT IV
1220 S. St. Francis Dr., Santa Fe, NM 87505
Phone: (505) 476-3460 Fax: (505) 476-3462

State of New Mexico
Energy, Minerals & Natural Resources Department
OIL CONSERVATION DIVISION
1220 South St. Francis Dr.
Santa Fe, New Mexico 87505

Revised August 2024
Submit one copy to:
Division of Oil Conservation
☐ AMENDED

EXHIBIT
B

WELL LOCATION AND ACREAGE DEDICATION PLAT

API Number 30-025-		Pool Code 98166		Pool Name WC-025 G-09 S233216K, UPR Wolfcamp					
Property Code		Property Name AIR BISCUIT 16 FED COM						Well Number 701H	
OGRID No. 7377		Operator Name EOG RESOURCES, INC.						Elevation 3778'	
Surface Location									
UL or lot no. D	Section 16	Township 22 S	Range 32 E	Lot Idn	Feet from the 497	North/South line NORTH	Feet from the 460	East/West line WEST	County LEA
Bottom Hole Location If Different From Surface									
UL or lot no. M	Section 21	Township 22 S	Range 32 E	Lot Idn	Feet from the 100	North/South line SOUTH	Feet from the 330	East/West line WEST	County LEA
Dedicated Acres 1280		Joint or Infill		Consolidated Code		Order No. PENDING COM AGREEMENT & NSP			

No allowable will be assigned to this completion until all interests have been consolidated or a non-standard unit has been approved by the division.

SURFACE LOCATION NEW MEXICO EAST NAD 1983 X=740903' Y=508960' LAT=N32.397541° LONG=W103.686750° NAD 1927 X=699720' Y=508900' LAT=N32.397418° LONG=W103.686262° 497' FNL 460' FWL UPPER MOST PERF. NEW MEXICO EAST NAD 1983 X=740770' Y=509356' LAT=N32.398631° LONG=W103.687172° NAD 1927 X=699588' Y=509295' LAT=N32.398508° LONG=W103.686684° 100' FNL 330' FWL	<p>The diagram shows a well location plat for the AIR BISCUIT 16 FED COM. It includes a grid with sections 16 and 21, and ranges 32 E. The surface location is marked with a red dot and coordinates. The bottom hole location is marked with a blue dot and coordinates. The diagram also shows the well path, including the uppermost perforation (UMP) and the bottom hole location (BHL). The well path is shown as a red line with a blue dot at the bottom hole location. The diagram also shows the well path, including the uppermost perforation (UMP) and the bottom hole location (BHL). The well path is shown as a red line with a blue dot at the bottom hole location.</p>	FED PERF. POINT NEW MEXICO EAST NAD 1983 X=740807' Y=504175' LAT=N32.384390° LONG=W103.687154° NAD 1927 X=699625' Y=504115' LAT=N32.384267° LONG=W103.686666° 0' FSL 330' FWL BOTTOM HOLE LOCATION/ LOWER MOST PERF. NEW MEXICO EAST NAD 1983 X=740842' Y=498992' LAT=N32.370144° LONG=W103.687142° NAD 1927 X=699659' Y=498932' LAT=N32.370021° LONG=W103.686655° 100' FSL 330' FWL
OPERATOR CERTIFICATION I hereby certify that the information contained herein is true and complete to the best of my knowledge and belief, and that this organization either owns a working interest or unleased mineral interest in the land including the proposed bottom hole location or has a right to drill this well at this location pursuant to a contract with an owner of such a mineral or working interest, or to voluntary pooling agreement or a compulsory pooling order heretofore entered by the division. Signature _____ Date _____ Print Name _____ E-mail Address _____	SURVEYORS CERTIFICATION I hereby certify that the well location shown on this plat was plotted from field notes of actual surveys made by me or under my supervision, and that the same is true and correct to the best of my belief. MARCH 1, 2023 Date of Survey Signature and Seal of Professional Surveyor: <p>The seal is circular with the text "MITCHELL L. McDONALD" around the top, "NEW MEXICO" in the center, and "PROFESSIONAL SURVEYOR" around the bottom. The number "29821" is in the center, and the date "07/31/2024" is at the bottom.</p>	

DISTRICT I
1625 N. French Dr., Hobbs, NM 88240
Phone: (575) 393-6161 Fax: (575) 393-0720

DISTRICT II
811 S. First St., Artesia, NM 88210
Phone: (575) 748-1283 Fax: (575) 748-9720

DISTRICT III
1000 Rio Brazos Rd., Artesia, NM 87410
Phone: (505) 334-6178 Fax: (505) 334-6170

DISTRICT IV
1220 S. St. Francis Dr., Santa Fe, NM 87505
Phone: (505) 476-3460 Fax: (505) 476-3462

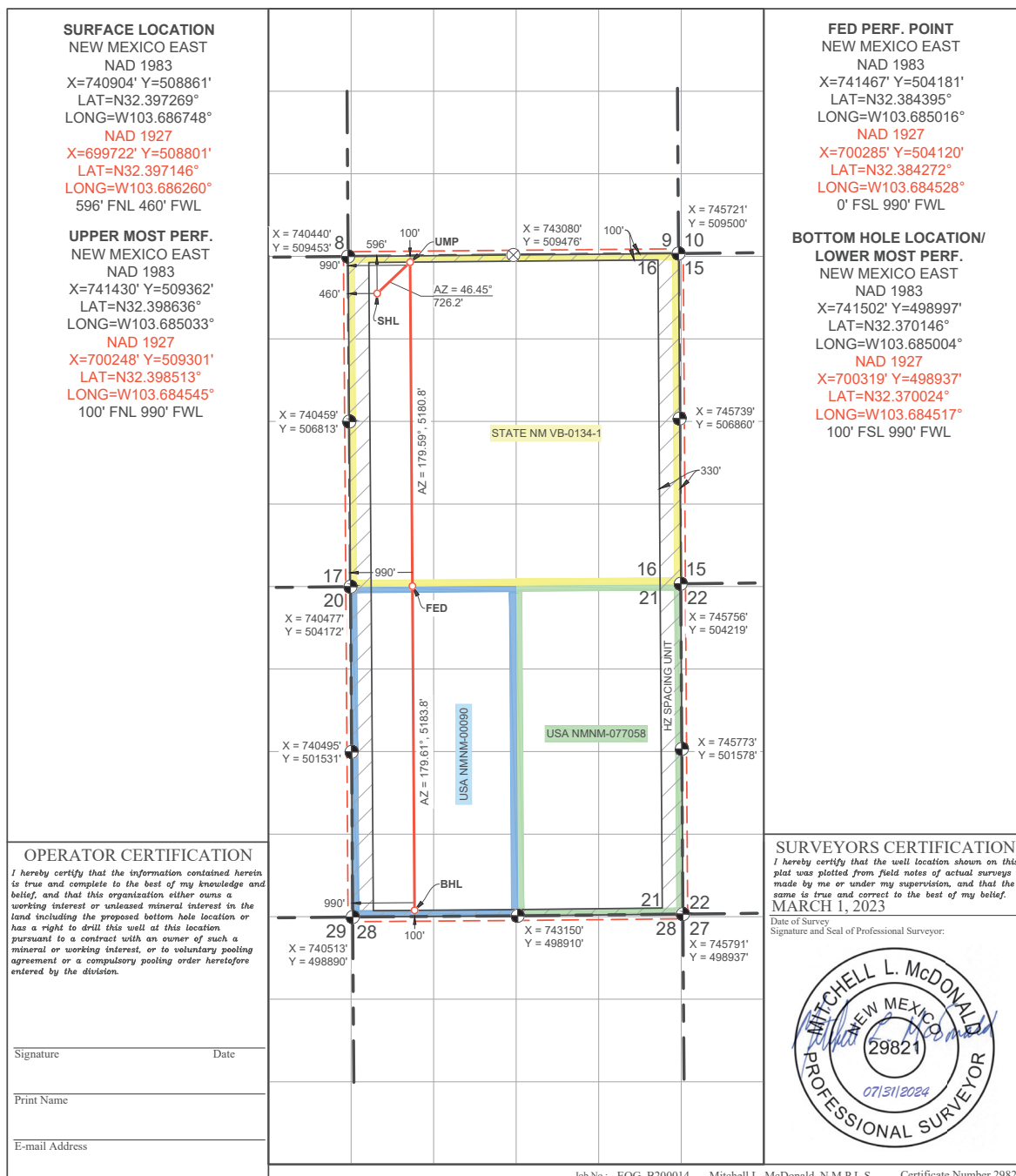
State of New Mexico
Energy, Minerals & Natural Resources Department
OIL CONSERVATION DIVISION
1220 South St. Francis Dr.
Santa Fe, New Mexico 87505

Form C-102
Revised August 1, 2011
Submit one copy to appropriate
District Office
☐ AMENDED REPORT

WELL LOCATION AND ACREAGE DEDICATION PLAT

API Number 30-025-		Pool Code 98166		Pool Name WC-025 G-09 S233216K, UPR Wolfcamp					
Property Code		Property Name AIR BISCUIT 16 FED COM						Well Number 702H	
OGRID No. 7377		Operator Name EOG RESOURCES, INC.						Elevation 3774'	
Surface Location									
UL or lot no. D	Section 16	Township 22 S	Range 32 E	Lot Idn	Feet from the 596	North/South line NORTH	Feet from the 460	East/West line WEST	County LEA
Bottom Hole Location If Different From Surface									
UL or lot no. M	Section 21	Township 22 S	Range 32 E	Lot Idn	Feet from the 100	North/South line SOUTH	Feet from the 990	East/West line WEST	County LEA
Dedicated Acres 1280		Joint or Infill		Consolidated Code		Order No. PENDING COM AGREEMENT & NSP			

No allowable will be assigned to this completion until all interests have been consolidated or a non-standard unit has been approved by the division.



DISTRICT I
1625 N. French Dr., Hobbs, NM 88240
Phone: (575) 393-6161 Fax: (575) 393-0720

DISTRICT II
811 S. First St., Artesia, NM 88210
Phone: (575) 748-1283 Fax: (575) 748-9720

DISTRICT III
1000 Rio Brazos Rd., Artesia, NM 87410
Phone: (505) 334-6178 Fax: (505) 334-6170

DISTRICT IV
1220 S. St. Francis Dr., Santa Fe, NM 87505
Phone: (505) 476-3460 Fax: (505) 476-3462

State of New Mexico
Energy, Minerals & Natural Resources Department
OIL CONSERVATION DIVISION
1220 South St. Francis Dr.
Santa Fe, New Mexico 87505

Form C-102
Revised August 1, 2011
Submit one copy to appropriate
District Office
☐ AMENDED REPORT

WELL LOCATION AND ACREAGE DEDICATION PLAT

API Number 30-025-	Pool Code 98166	Pool Name WC-025 G-09 S233216K, UPR Wolfcamp
Property Code	Property Name AIR BISCUIT 16 FED COM	Well Number 703H
OGRID No. 7377	Operator Name EOG RESOURCES, INC.	Elevation 3764'

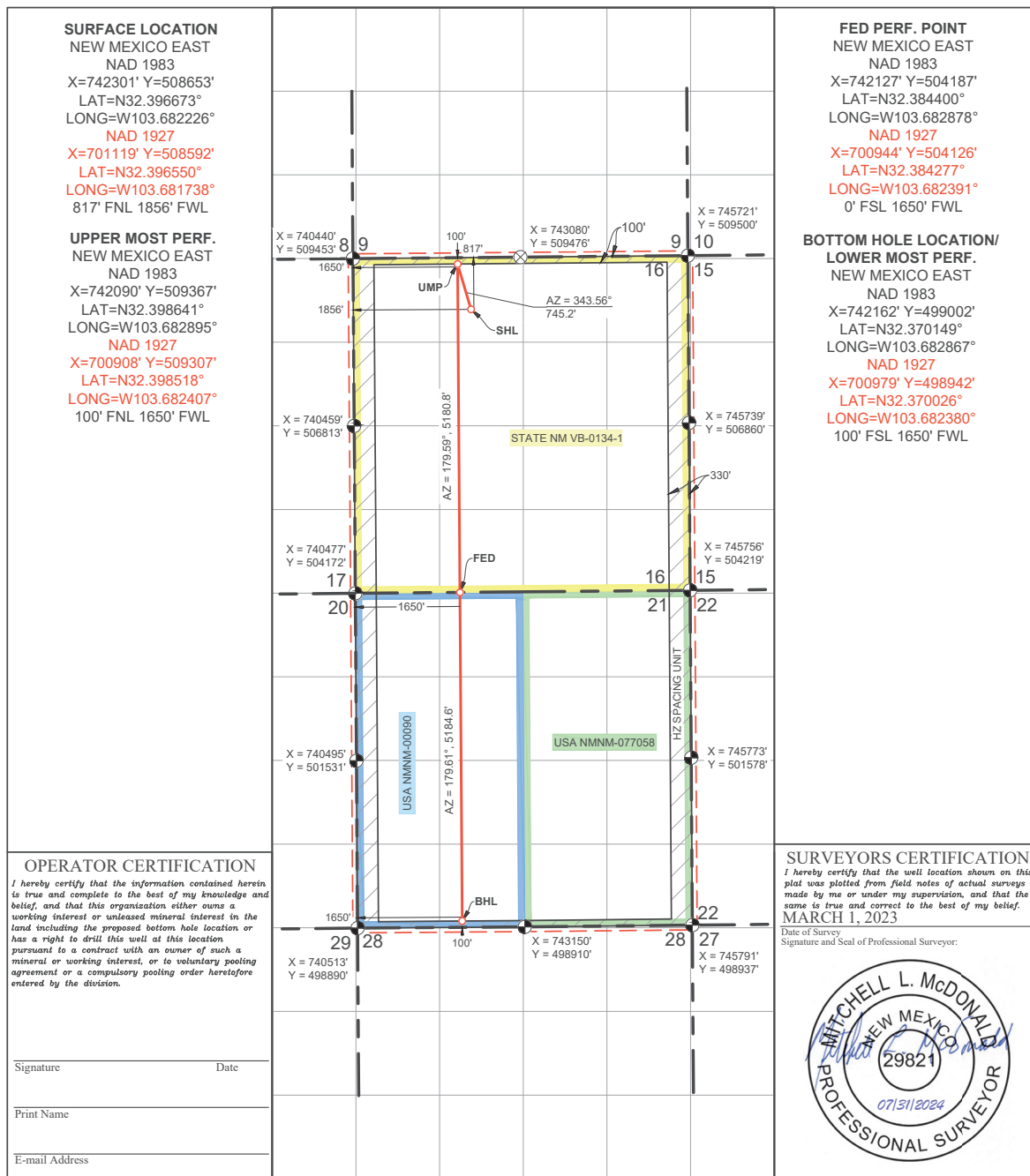
Surface Location

UL or lot no.	Section	Township	Range	Lot Idn	Feet from the	North/South line	Feet from the	East/West line	County
C	16	22 S	32 E		817	NORTH	1856	WEST	LEA

Bottom Hole Location If Different From Surface

UL or lot no.	Section	Township	Range	Lot Idn	Feet from the	North/South line	Feet from the	East/West line	County
N	21	22 S	32 E		100	SOUTH	1650	WEST	LEA
Dedicated Acres 1280	Joint or Infill	Consolidated Code	Order No. PENDING COM AGREEMENT & NSP						

No allowable will be assigned to this completion until all interests have been consolidated or a non-standard unit has been approved by the division.



DISTRICT I
1625 N. French Dr., Hobbs, NM 88240
Phone: (575) 393-6161 Fax: (575) 393-0720
DISTRICT II
811 S. First St., Artesia, NM 88210
Phone: (575) 748-1283 Fax: (575) 748-0720
DISTRICT III
1000 Rio Brazos Rd., Artesia, NM 87410
Phone: (505) 334-6178 Fax: (505) 334-6170
DISTRICT IV
1220 S. St. Francis Dr., Santa Fe, NM 87505
Phone: (505) 476-3460 Fax: (505) 476-3462

State of New Mexico
Energy, Minerals & Natural Resources Department
OIL CONSERVATION DIVISION
1220 South St. Francis Dr.
Santa Fe, New Mexico 87505

Form C-102
Revised August 1, 2011
Submit one copy to appropriate
District Office
☐ AMENDED REPORT

WELL LOCATION AND ACREAGE DEDICATION PLAT

API Number 30-025-	Pool Code 98166	Pool Name WC-025 G-09 S233216K, UPR Wolfcamp
Property Code	Property Name AIR BISCUIT 16 FED COM	Well Number 704H
OGRID No. 7377	Operator Name EOG RESOURCES, INC.	Elevation 3763'

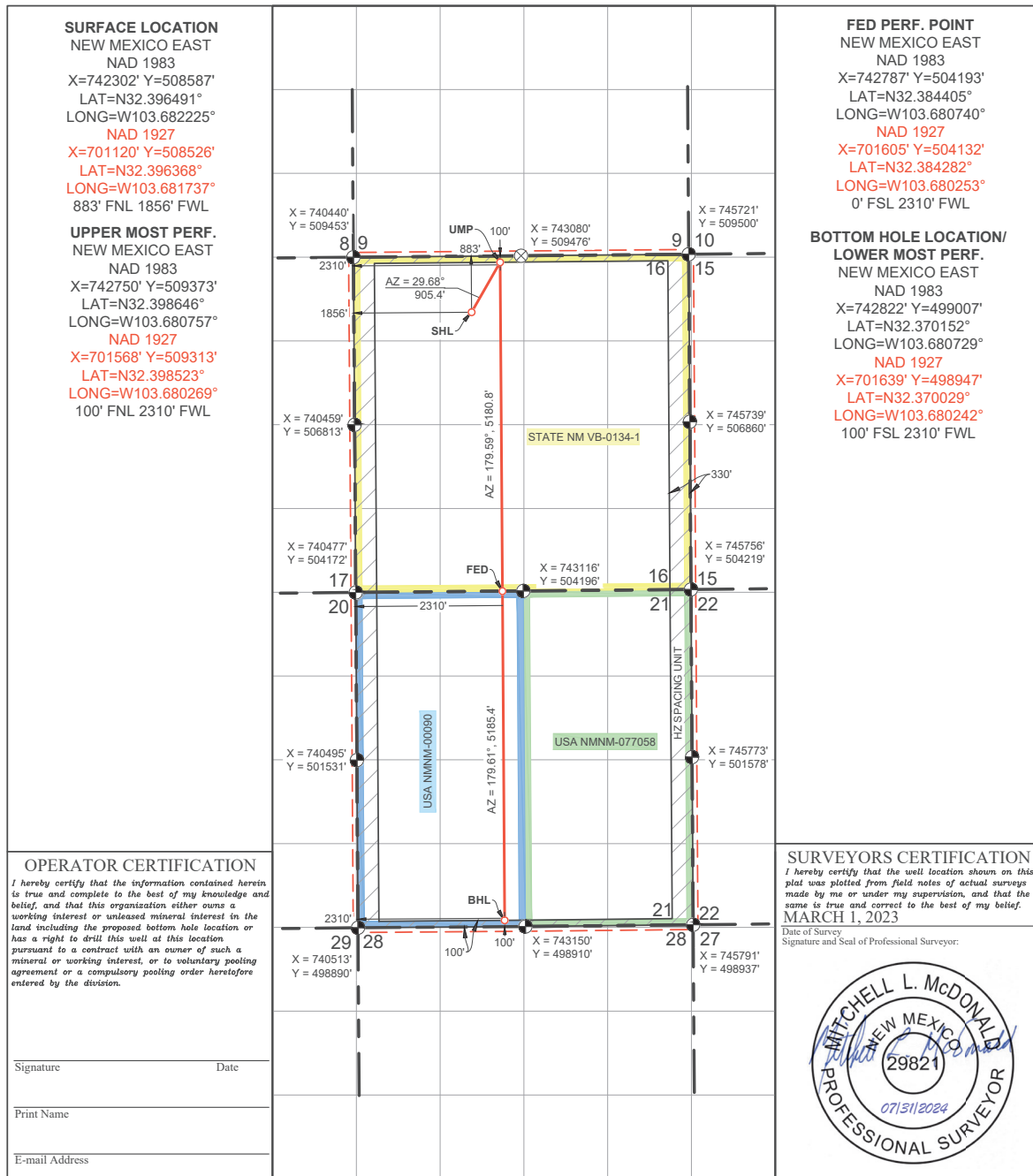
Surface Location

UL or lot no.	Section	Township	Range	Lot Idn	Feet from the	North/South line	Feet from the	East/West line	County
C	16	22 S	32 E		883	NORTH	1856	WEST	LEA

Bottom Hole Location If Different From Surface

UL or lot no.	Section	Township	Range	Lot Idn	Feet from the	North/South line	Feet from the	East/West line	County
N	21	22 S	32 E		100	SOUTH	2310	WEST	LEA
Dedicated Acres 1280	Joint or Infill	Consolidated Code	Order No.	PENDING COM AGREEMENT & NSP					

No allowable will be assigned to this completion until all interests have been consolidated or a non-standard unit has been approved by the division.



DISTRICT I
1625 N. French Dr., Hobbs, NM 88240
Phone: (575) 393-6161 Fax: (575) 393-0720
DISTRICT II
811 S. First St., Artesia, NM 88210
Phone: (575) 748-1283 Fax: (575) 748-9720
DISTRICT III
1000 Rio Brazos Rd., Artesia, NM 87410
Phone: (505) 334-6178 Fax: (505) 334-6170
DISTRICT IV
1220 S. St. Francis Dr., Santa Fe, NM 87505
Phone: (505) 476-3460 Fax: (505) 476-3462

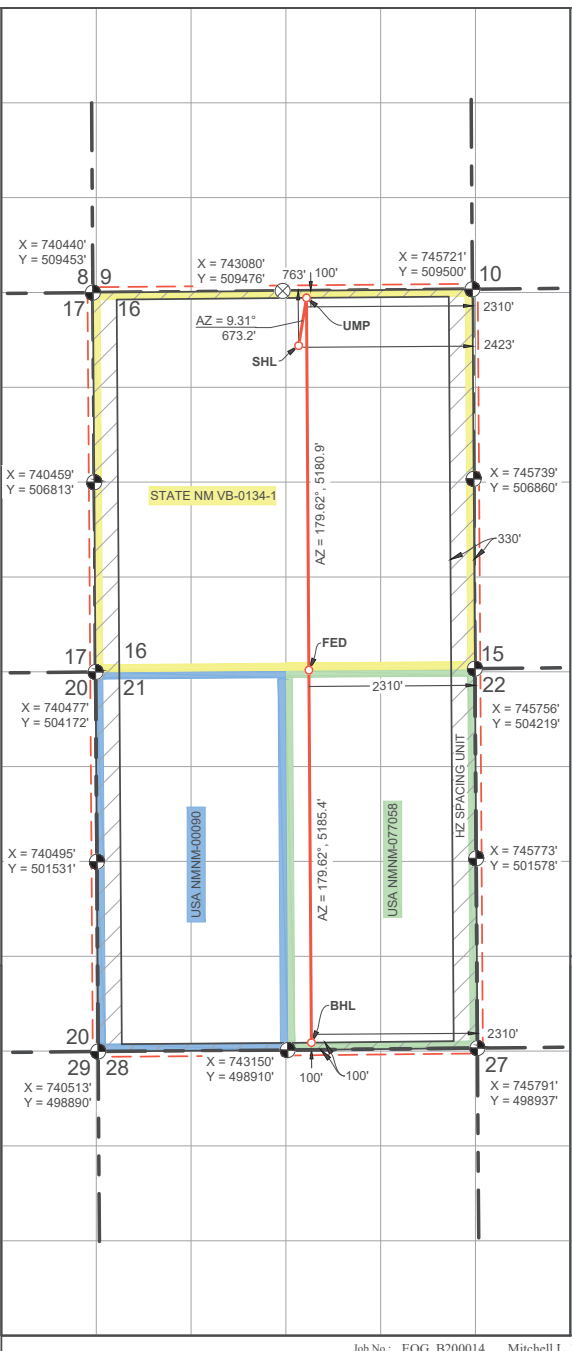

State of New Mexico
Energy, Minerals & Natural Resources Department
OIL CONSERVATION DIVISION
1220 South St. Francis Dr.
Santa Fe, New Mexico 87505

Form C-102
Revised August 1, 2011
Submit one copy to appropriate
District Office
☐ AMENDED REPORT

WELL LOCATION AND ACREAGE DEDICATION PLAT

API Number 30-025-		Pool Code 98166		Pool Name WC-025 G-09 S233216K, UPR Wolfcamp					
Property Code		Property Name AIR BISCUIT 16 FED COM						Well Number 705H	
OGRID No. 7377		Operator Name EOG RESOURCES, INC.						Elevation 3774'	
Surface Location									
UL or lot no. B	Section 16	Township 22 S	Range 32 E	Lot Idn	Feet from the 763	North/South line NORTH	Feet from the 2423	East/West line EAST	County LEA
Bottom Hole Location If Different From Surface									
UL or lot no. O	Section 21	Township 22 S	Range 32 E	Lot Idn	Feet from the 100	North/South line SOUTH	Feet from the 2310	East/West line EAST	County LEA
Dedicated Acres 1280		Joint or Infill		Consolidated Code		Order No. PENDING COM AGREEMENT & NSP			

No allowable will be assigned to this completion until all interests have been consolidated or a non-standard unit has been approved by the division.

SURFACE LOCATION NEW MEXICO EAST NAD 1983 X=743303' Y=508715' LAT=N32.396827° LONG=W103.678979° NAD 1927 X=702120' Y=508654' LAT=N32.396704° LONG=W103.678492° 763' FNL 2423' FEL		FED PERF. POINT NEW MEXICO EAST NAD 1983 X=743446' Y=504198' LAT=N32.384410° LONG=W103.678605° NAD 1927 X=702263' Y=504138' LAT=N32.384287° LONG=W103.678118° 0' FSL 2310' FEL
UPPER MOST PERF. NEW MEXICO EAST NAD 1983 X=743412' Y=509379' LAT=N32.398651° LONG=W103.678613° NAD 1927 X=702229' Y=509319' LAT=N32.398528° LONG=W103.678125° 100' FNL 2310' FEL	BOTTOM HOLE LOCATION/ LOWER MOST PERF. NEW MEXICO EAST NAD 1983 X=743480' Y=499013' LAT=N32.370157° LONG=W103.678597° NAD 1927 X=702298' Y=498953' LAT=N32.370034° LONG=W103.678110° 100' FSL 2310' FEL	
OPERATOR CERTIFICATION I hereby certify that the information contained herein is true and complete to the best of my knowledge and belief, and that this organization either owns a working interest or unleased mineral interest in the land including the proposed bottom hole location or has a right to drill this well at this location pursuant to a contract with an owner of such a mineral or working interest, or to voluntary pooling agreement or a compulsory pooling order heretofore entered by the division.	SURVEYORS CERTIFICATION I hereby certify that the well location shown on this plat was plotted from field notes of actual surveys made by me or under my supervision, and that the same is true and correct to the best of my belief. MARCH 1, 2023 Date of Survey Signature and Seal of Professional Surveyor: 	
Signature _____ Date _____		
Print Name _____		
E-mail Address _____		

DISTRICT I
1625 N. French Dr., Hobbs, NM 88240
Phone: (575) 393-6161 Fax: (575) 393-0720

DISTRICT II
811 S. First St., Artesia, NM 88210
Phone: (575) 748-1283 Fax: (575) 748-9720

DISTRICT III
1000 Rio Brazos Rd., Artesia, NM 87410
Phone: (505) 334-6178 Fax: (505) 334-6170

DISTRICT IV
1220 S. St. Francis Dr., Santa Fe, NM 87505
Phone: (505) 476-3460 Fax: (505) 476-3462

State of New Mexico
Energy, Minerals & Natural Resources Department
OIL CONSERVATION DIVISION
1220 South St. Francis Dr.
Santa Fe, New Mexico 87505

Form C-102
Revised August 1, 2011
Submit one copy to appropriate
District Office
☐ AMENDED REPORT

WELL LOCATION AND ACREAGE DEDICATION PLAT

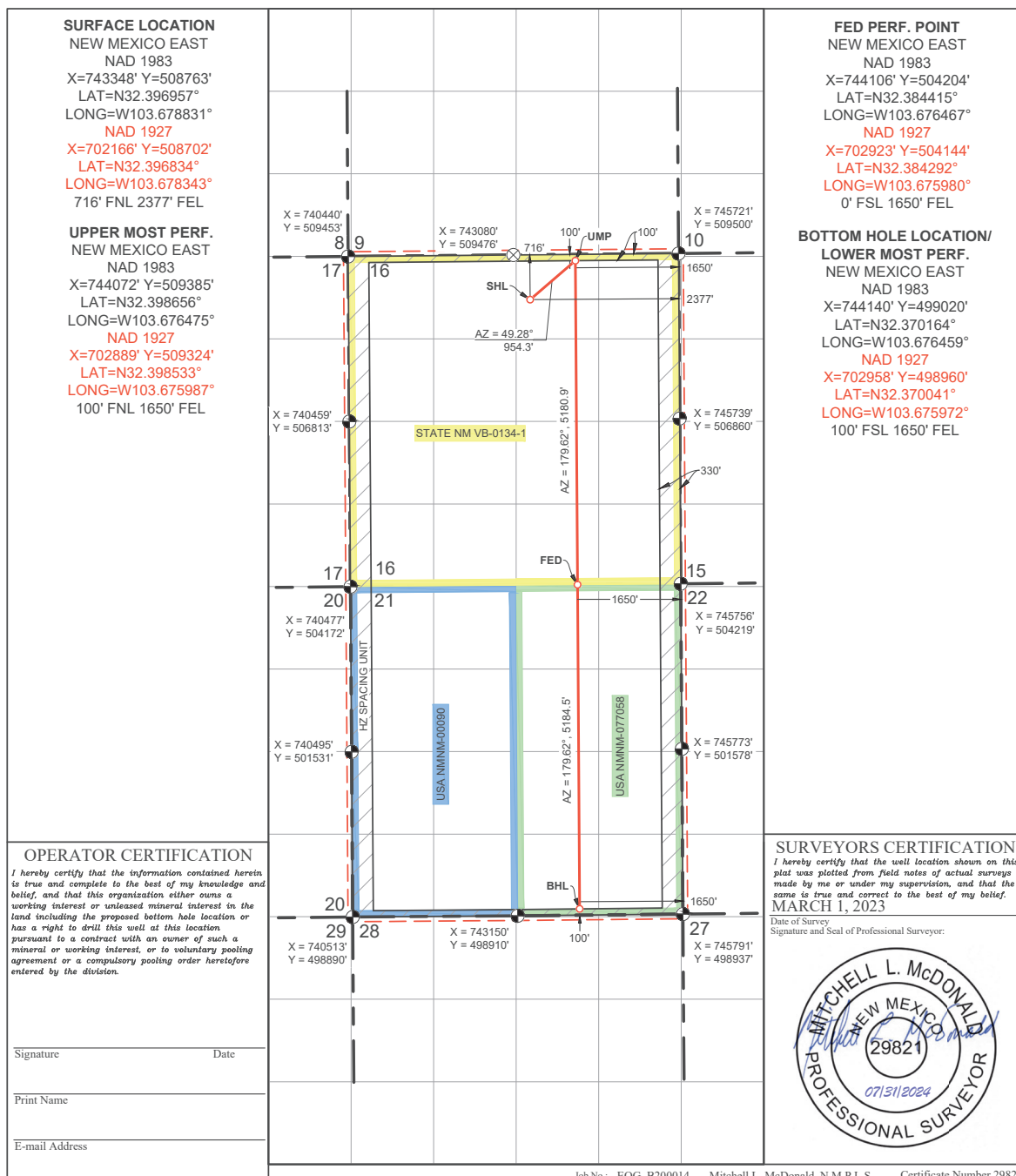
API Number 30-025-		Pool Code 98166		Pool Name WC-025 G-09 S233216K, UPR Wolfcamp					
Property Code		Property Name AIR BISCUIT 16 FED COM						Well Number 706H	
OGRID No. 7377		Operator Name EOG RESOURCES, INC.						Elevation 3775'	

Surface Location									
UL or lot no.	Section	Township	Range	Lot Idn	Feet from the	North/South line	Feet from the	East/West line	County
B	16	22 S	32 E		716	NORTH	2377	EAST	LEA

Bottom Hole Location If Different From Surface									
UL or lot no.	Section	Township	Range	Lot Idn	Feet from the	North/South line	Feet from the	East/West line	County
O	21	22 S	32 E		100	SOUTH	1650	EAST	LEA

Dedicated Acres 1280	Joint or Infill	Consolidated Code	Order No.
			PENDING COM AGREEMENT & NSP

No allowable will be assigned to this completion until all interests have been consolidated or a non-standard unit has been approved by the division.



DISTRICT I
1625 N. French Dr., Hobbs, NM 88240
Phone: (575) 393-6161 Fax: (575) 393-0720

DISTRICT II
811 S. First St., Artesia, NM 88210
Phone: (575) 748-1283 Fax: (575) 748-9720

DISTRICT III
1000 Rio Brazos Rd., Aztec, NM 87410
Phone: (505) 334-6178 Fax: (505) 334-6170

DISTRICT IV
1220 S. St. Francis Dr., Santa Fe, NM 87505
Phone: (505) 476-3460 Fax: (505) 476-3462

State of New Mexico
Energy, Minerals & Natural Resources Department
OIL CONSERVATION DIVISION
1220 South St. Francis Dr.
Santa Fe, New Mexico 87505

Form C-102
Revised August 1, 2011
Submit one copy to appropriate
District Office
☐ AMENDED REPORT

WELL LOCATION AND ACREAGE DEDICATION PLAT

API Number 30-025-			Pool Code 98166			Pool Name WC-025 G-09 S233216K, UPR Wolfcamp			
Property Code		Property Name AIR BISCUIT 16 FED COM						Well Number 707H	
OGRID No. 7377		Operator Name EOG RESOURCES, INC.						Elevation 3769'	
Surface Location									
UL or lot no. B	Section 16	Township 22 S	Range 32 E	Lot Idn	Feet from the 1079	North/South line NORTH	Feet from the 2053	East/West line EAST	County LEA
Bottom Hole Location If Different From Surface									
UL or lot no. P	Section 21	Township 22 S	Range 32 E	Lot Idn	Feet from the 100	North/South line SOUTH	Feet from the 990	East/West line EAST	County LEA
Dedicated Acres 1280		Joint or Infill		Consolidated Code		Order No. PENDING COM AGREEMENT & NSP			

No allowable will be assigned to this completion until all interests have been consolidated or a non-standard unit has been approved by the division.

SURFACE LOCATION
 NEW MEXICO EAST
 NAD 1983
 X=743675' Y=508402'
 LAT=N32.395961°
 LONG=W103.677778°
 NAD 1927
 X=702493' Y=508342'
 LAT=N32.395838°
 LONG=W103.677291°
 1079' FNL 2053' FEL

UPPER MOST PERF.
 NEW MEXICO EAST
 NAD 1983
 X=744732' Y=509391'
 LAT=N32.398661°
 LONG=W103.674337°
 NAD 1927
 X=703549' Y=509330'
 LAT=N32.398538°
 LONG=W103.673849°
 100' FNL 990' FEL

FED PERF. POINT
 NEW MEXICO EAST
 NAD 1983
 X=744766' Y=504210'
 LAT=N32.384420°
 LONG=W103.674329°
 NAD 1927
 X=703583' Y=504150'
 LAT=N32.384297°
 LONG=W103.673842°
 0' FSL 990' FEL

BOTTOM HOLE LOCATION/ LOWER MOST PERF.
 NEW MEXICO EAST
 NAD 1983
 X=744800' Y=499027'
 LAT=N32.370172°
 LONG=W103.674321°
 NAD 1927
 X=703618' Y=498966'
 LAT=N32.370049°
 LONG=W103.673835°
 100' FSL 990' FEL

OPERATOR CERTIFICATION
 I hereby certify that the information contained herein is true and complete to the best of my knowledge and belief, and that this organization either owns a working interest or unleased mineral interest in the land including the proposed bottom hole location or has a right to drill this well at this location pursuant to a contract with an owner of such a mineral or working interest, or to voluntary pooling agreement or a compulsory pooling order heretofore entered by the division.

SURVEYORS CERTIFICATION
 I hereby certify that the well location shown on this plat was plotted from field notes of actual surveys made by me or under my supervision, and that the same is true and correct to the best of my belief.
 MARCH 1, 2023
 Date of Survey
 Signature and Seal of Professional Surveyor:

Signature _____ Date _____

Print Name _____

E-mail Address _____

Job No.: EOG B200014 Mitchell L. McDonald N.M.P.L.S. Certificate Number 29821

DISTRICT I
1625 N. French Dr., Hobbs, NM 88240
Phone: (575) 393-6161 Fax: (575) 393-0720

DISTRICT II
811 S. First St., Artesia, NM 88210
Phone: (575) 748-1283 Fax: (575) 748-9720

DISTRICT III
1000 Rio Brazos Rd., Aztec, NM 87410
Phone: (505) 334-6178 Fax: (505) 334-6170

DISTRICT IV
1220 S. St. Francis Dr., Santa Fe, NM 87505
Phone: (505) 476-3460 Fax: (505) 476-3462

State of New Mexico
Energy, Minerals & Natural Resources Department
OIL CONSERVATION DIVISION
1220 South St. Francis Dr.
Santa Fe, New Mexico 87505

Form C-102
Revised August 1, 2011
Submit one copy to appropriate
District Office
☐ AMENDED REPORT

WELL LOCATION AND ACREAGE DEDICATION PLAT

API Number 30-025-		Pool Code 98166		Well Name WC-025 G-09 S233216K, UPR Wolfcamp					
Property Code		Property Name AIR BISCUIT 16 FED COM				Well Number 708H			
OGRID No. 7377		Operator Name EOG RESOURCES, INC.				Elevation 3767'			
Surface Location									
UL or lot no. B	Section 16	Township 22 S	Range 32 E	Lot Idn	Feet from the 1148	North/South line NORTH	Feet from the 1982	East/West line EAST	County LEA
Bottom Hole Location If Different From Surface									
UL or lot no. P	Section 21	Township 22 S	Range 32 E	Lot Idn	Feet from the 100	North/South line SOUTH	Feet from the 330	East/West line EAST	County LEA
Dedicated Acres 1280		Joint or Infill		Consolidated Code		Order No. PENDING COM AGREEMENT & NSP			

No allowable will be assigned to this completion until all interests have been consolidated or a non-standard unit has been approved by the division.

<p>SURFACE LOCATION</p> <p>NEW MEXICO EAST NAD 1983</p> <p>X=743747' Y=508333' LAT=N32.395771° LONG=W103.67548° NAD 1927</p> <p>X=702565' Y=508273' LAT=N32.395649° LONG=W103.677060° 1148' FNL 1982' FEL</p> <p>UPPER MOST PERF. NEW MEXICO EAST NAD 1983</p> <p>X=745392' Y=509397' LAT=N32.398667° LONG=W103.672198° NAD 1927</p> <p>X=704209' Y=509336' LAT=N32.398544° LONG=W103.671711° 100' FNL 330' FEL</p>		<p>FED PERF. POINT NEW MEXICO EAST NAD 1983</p> <p>X=745426' Y=504216' LAT=N32.384425° LONG=W103.672191° NAD 1927</p> <p>X=704243' Y=504156' LAT=N32.384302° LONG=W103.671704° 0' FSL 330' FEL</p> <p>BOTTOM HOLE LOCATION/ LOWER MOST PERF. NEW MEXICO EAST NAD 1983</p> <p>X=745460' Y=499033' LAT=N32.370179° LONG=W103.672184° NAD 1927</p> <p>X=704278' Y=498973' LAT=N32.370056° LONG=W103.671697° 100' FSL 330' FEL</p>
<p>OPERATOR CERTIFICATION</p> <p>I hereby certify that the information contained herein is true and complete to the best of my knowledge and belief, and that this organization either owns a working interest or unleased mineral interest in the land including the proposed bottom hole location or has a right to drill this well at this location pursuant to a contract with an owner of such a mineral or working interest, or to voluntary pooling agreement or a compulsory pooling order heretofore entered by the division.</p>	<p>SURVEYORS CERTIFICATION</p> <p>I hereby certify that the well location shown on this plat was plotted from field notes of actual surveys made by me or under my supervision, and that the same is true and correct to the best of my belief.</p> <p>MARCH 1, 2023</p> <p>Date of Survey Signature and Seal of Professional Surveyor:</p>	
<p>Signature _____ Date _____</p> <p>Print Name _____</p> <p>E-mail Address _____</p>		

DISTRICT I
1625 N. French Dr., Hobbs, NM 88240
Phone: (575) 393-6161 Fax: (575) 393-0720
DISTRICT II
811 S. First St., Artesia, NM 88210
Phone: (575) 748-1283 Fax: (575) 748-9720
DISTRICT III
1000 Rio Hondo Rd., Aztec, NM 87410
Phone: (505) 334-6178 Fax: (505) 334-6170
DISTRICT IV
1220 S. St. Francis Dr., Santa Fe, NM 87505
Phone: (505) 476-3460 Fax: (505) 476-3462

State of New Mexico
Energy, Minerals & Natural Resources Department
OIL CONSERVATION DIVISION
1220 South St. Francis Dr.
Santa Fe, New Mexico 87505

Form C-102
Revised August 1, 2011
Submit one copy to appropriate
District Office
☐ AMENDED REPORT

WELL LOCATION AND ACREAGE DEDICATION PLAT

API Number 30-025-	Pool Code 98166	Pool Name WC-025 G-09 S233216K, UPR Wolfcamp
Property Code	Property Name AIR BISCUIT 16 FED COM	Well Number 741H
OGRID No. 7377	Operator Name EOG RESOURCES, INC.	Elevation 3774'

Surface Location

UL or lot no.	Section	Township	Range	Lot Idn	Feet from the	North/South line	Feet from the	East/West line	County
D	16	22 S	32 E		495	NORTH	1249	WEST	LEA

Bottom Hole Location If Different From Surface

UL or lot no.	Section	Township	Range	Lot Idn	Feet from the	North/South line	Feet from the	East/West line	County
M	21	22 S	32 E		100	SOUTH	990	WEST	LEA
Dedicated Acres 1280	Joint or Infill	Consolidated Code	Order No.	PENDING COM & NSP					

No allowable will be assigned to this completion until all interests have been consolidated or a non-standard unit has been approved by the division.

SURFACE LOCATION NEW MEXICO EAST NAD 1983 X=741692' Y=508969' LAT=N32.397553° LONG=W103.684192° NAD 1927 X=700510' Y=508909' LAT=N32.397430° LONG=W103.683704° 495' FNL 1249' FWL KOP LOCATION NEW MEXICO EAST NAD 1983 X=741430' Y=509412' LAT=N32.398773° LONG=W103.685034° NAD 1927 X=700248' Y=509351' LAT=N32.398650° LONG=W103.684546° 50' FNL 990' FWL FIRST TAKE POINT NEW MEXICO EAST NAD 1983 X=741430' Y=509362' LAT=N32.398636° LONG=W103.685033° NAD 1927 X=700248' Y=509301' LAT=N32.398513° LONG=W103.684545° 100' FNL 990' FWL	<p>The diagram shows a well location plat with a grid of sections. The well is located in Section 16, Township 22 S, Range 32 E. The surface location is marked with a red dot and the bottom hole location is marked with a blue dot. The well is identified as 'AIR BISCUIT 16 FED COM' and '741H'. The diagram includes bearings and distances for the well path, such as 'AZ = 329.30°' and '514.4''.</p>	FED PERF. POINT NEW MEXICO EAST NAD 1983 X=741467' Y=504181' LAT=N32.384395° LONG=W103.685016° NAD 1927 X=700285' Y=504120' LAT=N32.384272° LONG=W103.684528° 990' FWL LOWER MOST PERF./ BOTTOM HOLE LOCATION NEW MEXICO EAST NAD 1983 X=741502' Y=498997' LAT=N32.370146° LONG=W103.685004° NAD 1927 X=700319' Y=498937' LAT=N32.370024° LONG=W103.684517° 100' FSL 990' FWL
OPERATOR CERTIFICATION I hereby certify that the information contained herein is true and complete to the best of my knowledge and belief, and that this organization either owns a working interest or unleased mineral interest in the land including the proposed bottom hole location or has a right to drill this well at this location pursuant to a contract with an owner of such a mineral or working interest, or to voluntary pooling agreement or a compulsory pooling order heretofore entered by the division. Signature _____ Date _____ Print Name _____ E-mail Address _____	SURVEYORS CERTIFICATION I hereby certify that the well location shown on this plat was plotted from field notes of actual surveys made by me or under my supervision, and that the same is true and correct to the best of my belief. MARCH 1, 2023 Date of Survey Signature and Seal of Professional Surveyor: 7 FEB 2024 TIM C. PAPPAS NEW MEXICO 21209 REGISTERED PROFESSIONAL SURVEYOR	

DISTRICT I
1625 N. French Dr., Hobbs, NM 88240
Phone: (575) 393-6161 Fax: (575) 393-0720

DISTRICT II
811 S. First St., Artesia, NM 88210
Phone: (575) 748-1283 Fax: (575) 748-9720

DISTRICT III
1000 Rio Hondo Rd., Aztec, NM 87410
Phone: (505) 334-6178 Fax: (505) 334-6170

DISTRICT IV
1220 S. St. Francis Dr., Santa Fe, NM 87505
Phone: (505) 476-3460 Fax: (505) 476-3462

State of New Mexico
Energy, Minerals & Natural Resources Department
OIL CONSERVATION DIVISION
1220 South St. Francis Dr.
Santa Fe, New Mexico 87505

Form C-102
Revised August 1, 2011
Submit one copy to appropriate
District Office
☐ AMENDED REPORT

WELL LOCATION AND ACREAGE DEDICATION PLAT

API Number 30-025-	Pool Code 98166	Pool Name WC-025 G-09 S233216K UPR, Wolfcamp
Property Code	Property Name AIR BISCUIT 16 FED COM	Well Number 742H
OGRID No. 7377	Operator Name EOG RESOURCES, INC.	Elevation 3771'

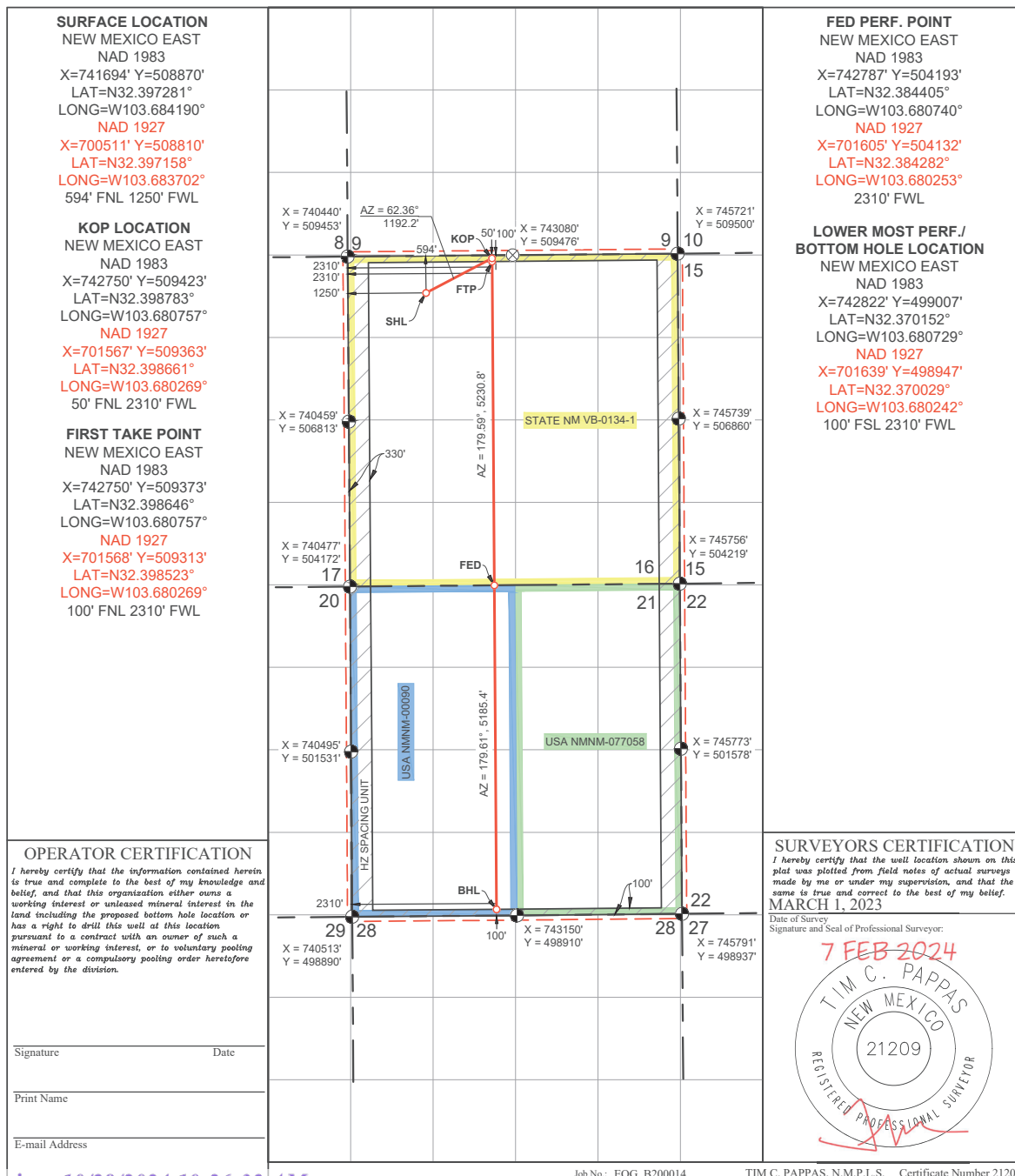
Surface Location

UL or lot no.	Section	Township	Range	Lot Idn	Feet from the	North/South line	Feet from the	East/West line	County
D	16	22 S	32 E		594	NORTH	1250	WEST	LEA

Bottom Hole Location If Different From Surface

UL or lot no.	Section	Township	Range	Lot Idn	Feet from the	North/South line	Feet from the	East/West line	County
N	21	22 S	32 E		100	SOUTH	2310	WEST	LEA
Dedicated Acres 1280	Joint or Infill	Consolidated Code	Order No.	PENDING COM & NSP					

No allowable will be assigned to this completion until all interests have been consolidated or a non-standard unit has been approved by the division.



DISTRICT I
1623 N. French Dr., Hobbs, NM 88240
Phone: (575) 393-6161 Fax: (575) 393-0720

DISTRICT II
811 S. First St., Artesia, NM 88210
Phone: (575) 748-1283 Fax: (575) 748-9720

DISTRICT III
1000 Rio Brazos Rd., Artec, NM 87410
Phone: (505) 334-6178 Fax: (505) 334-6170

DISTRICT IV
1220 S. St. Francis Dr., Santa Fe, NM 87505
Phone: (505) 476-3460 Fax: (505) 476-3462

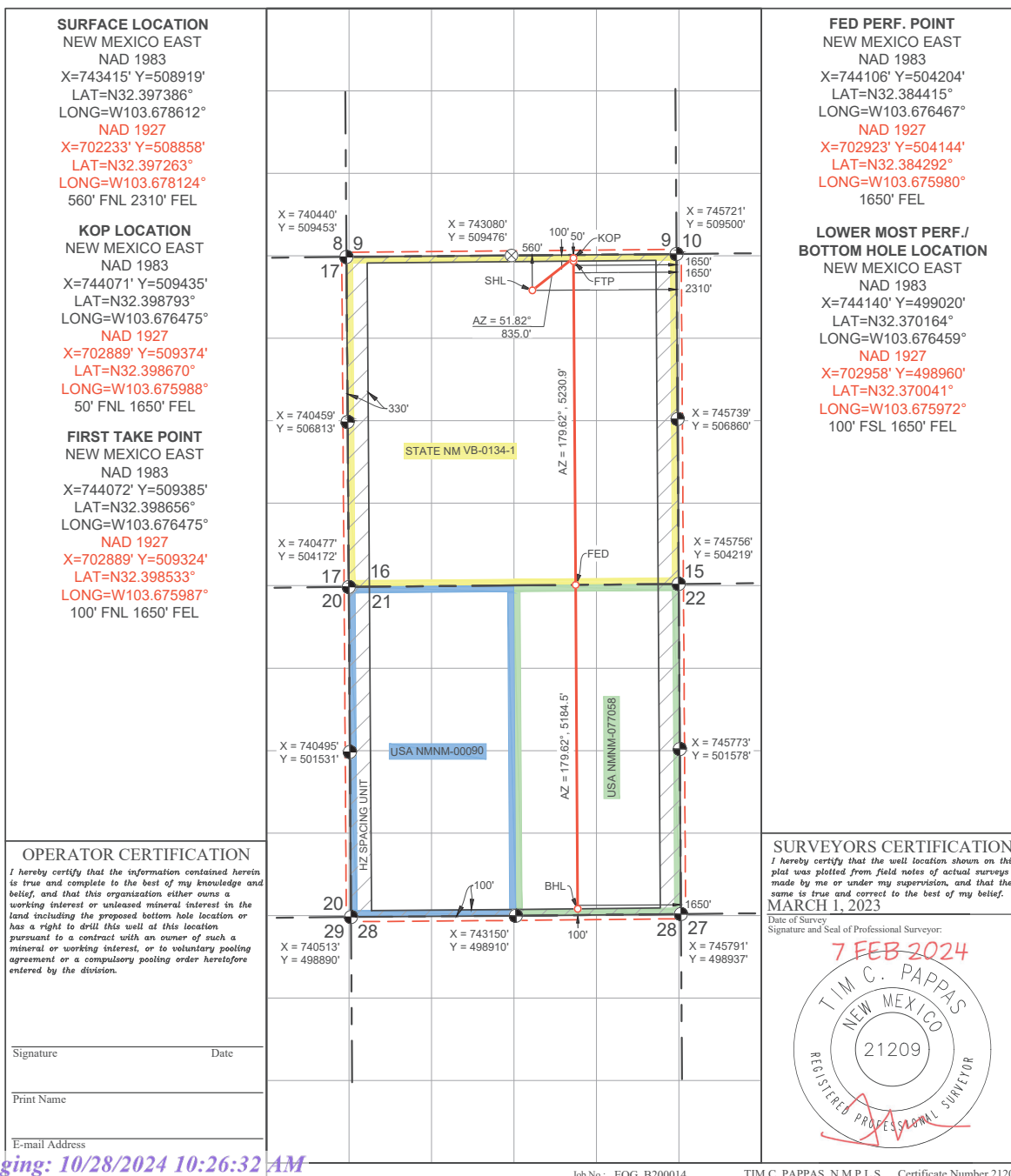
State of New Mexico
Energy, Minerals & Natural Resources Department
OIL CONSERVATION DIVISION
1220 South St. Francis Dr.
Santa Fe, New Mexico 87505

Form C-102
Revised August 1, 2011
Submit one copy to appropriate
District Office
☐ AMENDED REPORT

WELL LOCATION AND ACREAGE DEDICATION PLAT

API Number 30-025-		Pool Code 98166		Pool Name WC-025 G-09 S233216K, UPR Wolfcamp					
Property Code		Property Name AIR BISCUIT 16 FED COM						Well Number 743H	
OGRID No. 7377		Operator Name EOG RESOURCES, INC.						Elevation 3783'	
Surface Location									
UL or lot no. B	Section 16	Township 22 S	Range 32 E	Lot Idn	Feet from the 560	North/South line NORTH	Feet from the 2310	East/West line EAST	County LEA
Bottom Hole Location If Different From Surface									
UL or lot no. O	Section 21	Township 22 S	Range 32 E	Lot Idn	Feet from the 100	North/South line SOUTH	Feet from the 1650	East/West line EAST	County LEA
Dedicated Acres 1280		Joint or Infill		Consolidated Code		Order No. PENDING COM & NSP			

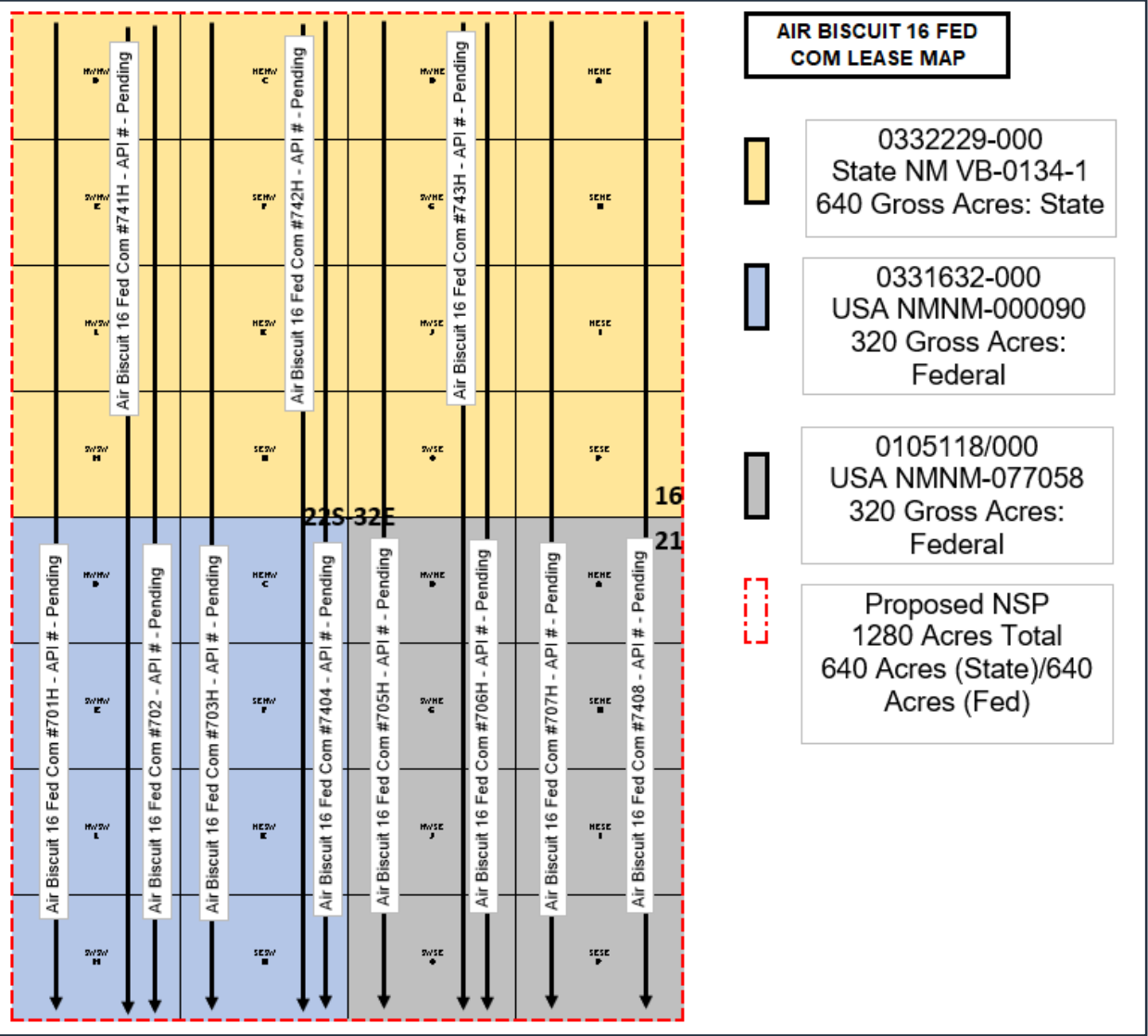
No allowable will be assigned to this completion until all interests have been consolidated or a non-standard unit has been approved by the division.



Proposed Non-Standard Horizontal Spacing Unit
Air Biscuit 16 Fed Com: Sections 16 and 21, T22S-R32E
Wolfcamp Well List

EXHIBIT
C

Well Name	API #	Formation	Target	Spud Date
AIR BISCUIT 16 FED COM #701H	PENDING	WOLFCAMP	WOLFCAMP	January 2025
AIR BISCUIT 16 FED COM #702H	PENDING	WOLFCAMP	WOLFCAMP	January 2025
AIR BISCUIT 16 FED COM #703H	PENDING	WOLFCAMP	WOLFCAMP	January 2025
AIR BISCUIT 16 FED COM #704H	PENDING	WOLFCAMP	WOLFCAMP	January 2025
AIR BISCUIT 16 FED COM #705H	PENDING	WOLFCAMP	WOLFCAMP	October 2025
AIR BISCUIT 16 FED COM #706H	PENDING	WOLFCAMP	WOLFCAMP	October 2025
AIR BISCUIT 16 FED COM #707H	PENDING	WOLFCAMP	WOLFCAMP	October 2025
AIR BISCUIT 16 FED COM #708H	PENDING	WOLFCAMP	WOLFCAMP	October 2025
AIR BISCUIT 16 FED COM #741H	PENDING	WOLFCAMP	LOWER WOLFCAMP	January 2025
AIR BISCUIT 16 FED COM #742H	PENDING	WOLFCAMP	LOWER WOLFCAMP	January 2025
AIR BISCUIT 16 FED COM #743H	PENDING	WOLFCAMP	LOWER WOLFCAMP	October 2025



Proposed Non-Standard Horizontal Spacing Unit
Air Biscuit 16 Fed Com: Sections 16 and 21, T22S-R32E
Notice Tracts: Wolfcamp



EXHIBIT
D

		21	22	23	24	19	20	21	22	23	24	19	20	21	22	23	24	19
30	29	28	27	26	25	30	29	28	27	26	25	30	29	28	27	26	25	30
31	32	33	34	35	36	31	32	33	34	35	36	31	32	33	34	35	36	31
6	5	4	3	2	1	6	5	4	3	2	1	6	5	4	3	2	1	6
7	8	9	10	11	12	7	8	9	10	11	12	7	8	9	10	11	12	7
18	17	16	15	14	13	18	17	16	15	14	13	18	17	16	15	14	13	18
19	20	21	22	23	24	19	20	21	22	23	24	19	20	21	22	23	24	19
30	29	28	27	26	25	30	29	28	27	26	25	30	29	28	27	26	25	30
31	32	33	34	35	36	31	32	33	34	35	36	31	32	33	34	35	36	31
6	5	4	3	2	1	6	5	4	3	2	1	6	5	4	3	2	1	6
7	8	9	10	11	12	7	8	9	10	11	12	7	8	9	10	11	12	7
18	17	16	15	14	13	18	17	16	15	14	13	18	17	16	15	14	13	18
19	20	21	22	23	24	19	20	21	22	23	24	19	20	21	22	23	24	19
30	29	28	27	26	25	30	29	28	27	26	25	30	29	28	27	26	25	30
31	32	33	34	35	36	31	32	33	34	35	36	31	32	33	34	35	36	31
6	5	4	3	2	1	6	5	4	3	2	1	6	5	4	3	2	1	6
7	8	9	10	11	12	7	8	9	10	11	12	7	8	9	10	11	12	7
18	17	16	15	14	13	18	17	16	15	14	13	18	17	16	15	14	13	18
19	20	21	22	23	24	19	20	21	22	23	24	19	20	21	22	23	24	19
30	29	28	27	26	25	30	29	28	27	26	25	30	29	28	27	26	25	30
31	32	33	34	35	36	31	32	33	34	35	36	31	32	33	34	35	36	31

22S 31E

22S 32E

22S 33E

23S 31E

23S 32E

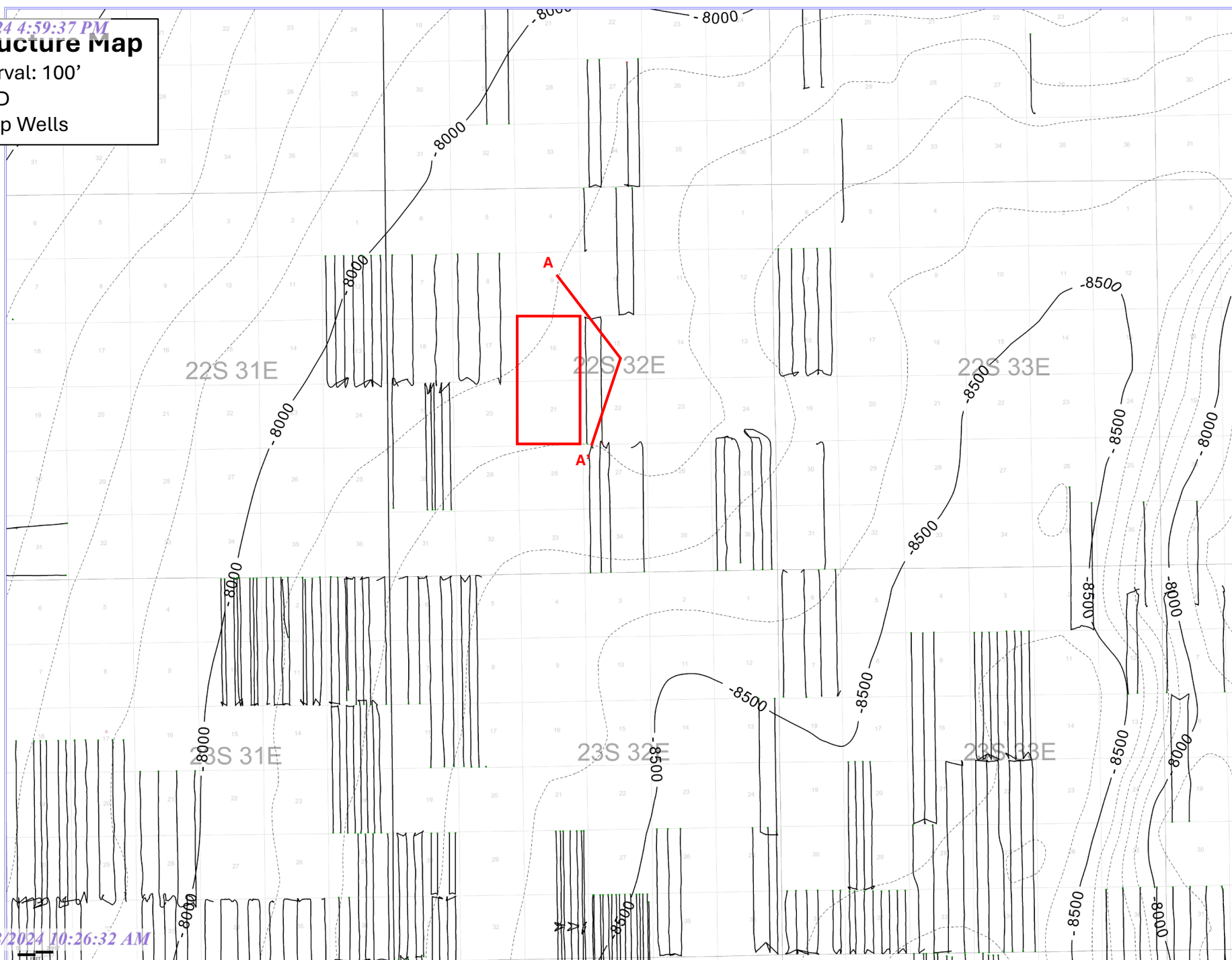
23S 33E

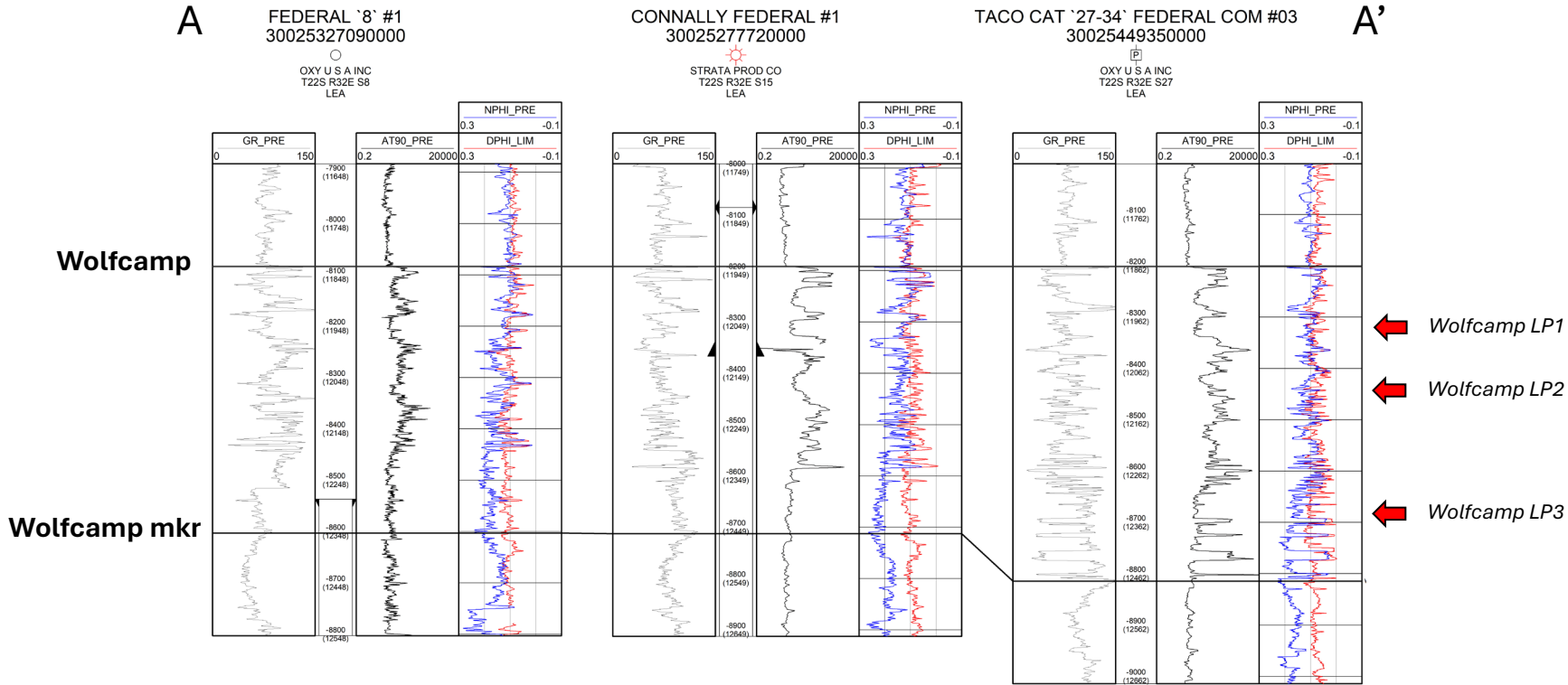
Wolfcamp Structure Map

Contour Interval: 100'

ssTVD

All Wolfcamp Wells





New Mexico Oil Conservation Division	Attn: Mr. Dean McClure	1220 South St. Francis Drive	Santa Fe	NM	87505
Bureau of Land Management	Attn: Mr. Jonathon Shepard	620 E. Green Street	Carlsbad	NM	88220
New Mexico State Land Office	Attn: Scott Dawson	310 Old Santa Fe Trail	Santa Fe	NM	87501
XTO Holdings, LLC		22777 Springwoods Village Parkway	Spring	TX	77389
Yates Industries LLC		P.O. Box 1091	Artesia	NM	88211-1091
Yates Industries LLC		403 W. San Francisco St.	Santa Fe	NM	87501
Texas Independent Exploration Limited		6760 Portwest Dr.	Houston	TX	77024-8005
Matador Production Company		5400 LBJ Freeway, Suite 1500	Dallas	TX	75240
OXY USA Inc.		P.O. Box 27570	Houston	TX	77227
Marathon Oil Permian LLC		990 Town and Country Blvd.	Houston	TX	77024

EXHIBIT
E



Paula M. Vance
Associate
Phone (505) 954-7286
PMVance@hollandhart.com

August 22, 2024

VIA CERTIFIED MAIL
RETURN RECEIPT REQUESTED

TO: ALL AFFECTED PERSONS

Re: Application of EOG Resources, Inc. for administrative approval of a 1,280-acre non-standard horizontal spacing unit in the WC-025 G-09 S233216K, UPR Wolfcamp Pool [98166] comprised of All of Sections 16 and 21, Township 22 South, Range 32 East, NMPM, Lea County, New Mexico.

Ladies and Gentlemen:

Enclosed is a copy of the above-referenced application which was filed with the New Mexico Oil Conservation Division on this date. Any objection to this application must be filed in writing within twenty days from the date this application is received by the New Mexico Oil Conservation Division, 1220 South St. Francis Drive, Santa Fe, New Mexico, 87505. If no objection is received within this twenty-day period, this application may be approved administratively by the Division.

If you have any questions about this application, please contact the following:

Laci Stretcher
EOG Resources, Inc.
(432) 247-6362
laci_stretcher@eogresources.com

Sincerely,

A handwritten signature in blue ink, appearing to read "Paula M. Vance".

Paula M. Vance
ATTORNEY FOR
EOG RESOURCES, INC.

District I
1625 N. French Dr., Hobbs, NM 88240
Phone:(575) 393-6161 Fax:(575) 393-0720
District II
811 S. First St., Artesia, NM 88210
Phone:(575) 748-1283 Fax:(575) 748-9720
District III
1000 Rio Brazos Rd., Aztec, NM 87410
Phone:(505) 334-6178 Fax:(505) 334-6170
District IV
1220 S. St Francis Dr., Santa Fe, NM 87505
Phone:(505) 476-3470 Fax:(505) 476-3462

State of New Mexico
Energy, Minerals and Natural Resources
Oil Conservation Division
1220 S. St Francis Dr.
Santa Fe, NM 87505

CONDITIONS

Action 378520

CONDITIONS

Operator: EOG RESOURCES INC 5509 Champions Drive Midland, TX 79706	OGRID: 7377
	Action Number: 378520
	Action Type: [UF-NSP] Non-Standard Proration (NSP)

CONDITIONS

Created By	Condition	Condition Date
llowe	None	9/3/2024