

Revised March 23, 2017

RECEIVED:	REVIEWER:	TYPE:	APP NO:
-----------	-----------	-------	---------

ABOVE THIS TABLE FOR OCD DIVISION USE ONLY

NEW MEXICO OIL CONSERVATION DIVISION
 - Geological & Engineering Bureau -
 1220 South St. Francis Drive, Santa Fe, NM 87505



ADMINISTRATIVE APPLICATION CHECKLIST

THIS CHECKLIST IS MANDATORY FOR ALL ADMINISTRATIVE APPLICATIONS FOR EXCEPTIONS TO DIVISION RULES AND REGULATIONS WHICH REQUIRE PROCESSING AT THE DIVISION LEVEL IN SANTA FE

Applicant: _____ OGRID Number: _____
 Well Name: _____ API: _____
 Pool: _____ Pool Code: _____

SUBMIT ACCURATE AND COMPLETE INFORMATION REQUIRED TO PROCESS THE TYPE OF APPLICATION INDICATED BELOW

1) **TYPE OF APPLICATION:** Check those which apply for [A]

A. Location – Spacing Unit – Simultaneous Dedication

☐ NSL ☐ NSP (PROJECT AREA) ☐ NSP (PRORATION UNIT) ☐ SD

B. Check one only for [I] or [II]

[I] Commingling – Storage – Measurement

☐ DHC ☐ CTB ☐ PLC ☐ PC ☐ OLS ☐ OLM

[II] Injection – Disposal – Pressure Increase – Enhanced Oil Recovery

☐ WFX ☐ PMX ☐ SWD ☐ IPI ☐ EOR ☐ PPR

2) **NOTIFICATION REQUIRED TO:** Check those which apply.

- A. ☐ Offset operators or lease holders
 B. ☐ Royalty, overriding royalty owners, revenue owners
 C. ☐ Application requires published notice
 D. ☐ Notification and/or concurrent approval by SLO
 E. ☐ Notification and/or concurrent approval by BLM
 F. ☐ Surface owner
 G. ☐ For all of the above, proof of notification or publication is attached, and/or,
 H. ☐ No notice required

FOR OCD ONLY

- ☐ Notice Complete
☐ Application Content Complete

3) **CERTIFICATION:** I hereby certify that the information submitted with this application for administrative approval is **accurate** and **complete** to the best of my knowledge. I also understand that **no action** will be taken on this application until the required information and notifications are submitted to the Division.

Note: Statement must be completed by an individual with managerial and/or supervisory capacity.

 Print or Type Name

 Date

 Phone Number

 Signature

 e-mail Address



October 24, 2024

SENT VIA CERTIFIED MAIL

New Mexico Oil Conservation Division
1220 South St. Francis Drive
Santa Fe, New Mexico 87505
Attn: Mr. Leonard Lowe, Petroleum Engineer

RE: Application for Non-Standard Proration Unit
Jawbone BS Fed Com 1H, 2H and 3H
Section 2, 25S-26E & Section 35, 24S-26E (the "Lands")
Eddy County, New Mexico

Dear Mr. Lowe,

Pursuant to 19.15.16.15(B)(5) Flat Creek Resources, LLC's ("Flat Creek") respectfully requests administrative approval of a non-standard proration unit for the following horizontal oil wells in the Cottonwood Draw; Bone Spring (Oil) pool (97494) (the "Wells"):

- **Jawbone BS Fed Com 1H (API No. 30-015-49457)**
 - Surface Hole Location: 200' FSL and 1,020' FEL of Section 2, 25S-26E
 - First Take Point: 100' FSL and 752' FEL of Section 2, 25S-26E
 - Last Take Point: 198' FNL and 765' FEL of Section 35, 24S-26E
- **Jawbone BS Fed Com 2H (API No. 30-015-49459)**
 - Surface Hole Location: 200' FSL and 1,050' FEL of Section 2, 25S-26E
 - First Take Point: 127' FSL and 2,537' FEL of Section 2, 25S-26E
 - Last Take Point: 172' FNL and 2,580' FEL of Section 35, 24S-26E
- **Jawbone BS Fed Com 3H (API No. 30-015-49664)**
 - Surface Hole Location: 396' FSL and 1,156' FWL of Section 2, 25S-26E
 - First Take Point: 100' FSL and 671' FWL of Section 2, 25S-26E
 - Last Take Point: 100' FNL and 685' FWL of Section 35, 24S-26E

Please note that the OCD previously issued orders for three (3) spacing units collectively covering the Lands, being Order Nos. R-23053, R-23054 and R-23055. The Wells have been drilled, but not completed, pursuant to those prior Orders. The Lands will now be the subject of a single Communitization Agreement rather than separate Communitization Agreements for each well.

Flat Creek seeks administrative approval of a non-standard spacing unit to develop the Lands as a single communitized area. Doing so allows Flat Creek to efficiently locate surface facilities, reduce surface disturbance, consolidate roads, tanks and pipelines, and promote effective well

NSP Application – Jawbone Unit
October 24, 2024
Page 2 of 2

spacing, thereby promoting conservation and preventing waste. A single surface facility also reduces emissions from multiple tank batteries.

Enclosed you will find the Well Location and Acreage Dedication Plat (C-102) for each Well, a plat showing the notice tracts for the proposed non-standard spacing unit, and the notice letter delivered to all affected parties along with a copy of this application.

If you have any questions concerning this application, you may contact me at (817) 310-8572 or mgregory@freedomenergy.com.

Sincerely,

Flat Creek Resources, LLC



Mike Gregory, CPL
Vice President - Land

C-102 Sumbit electronically Via OCD Permitting	State of New Mexico Energy, Minerals & Natural Resources Department OIL CONVERSION DIVISION	Revised July, 09 2024	
		Submittal Type:	<input type="checkbox"/> Initial Submittal
			<input type="checkbox"/> Amended Report
		<input checked="" type="checkbox"/> As Drilled	

WELL LOCATION INFORMATION			
API Number 30-015-49457	Pool Code 97494	Pool Name COTTONWOOD DRAW;BONE SPRING (O)	
Property Code	Property Name JAWBONE BS FED COM	Well Number 1H	
OGRID No. 374034	Operator Name FLAT CREEK RESOURCES, LLC	Ground Level Elevation 3,354'	
Surface Owner: <input checked="" type="checkbox"/> State <input type="checkbox"/> Fee <input type="checkbox"/> Tribal <input type="checkbox"/> Federal		Mineral Owner: <input type="checkbox"/> State <input type="checkbox"/> Fee <input type="checkbox"/> Tribal <input type="checkbox"/> Federal	

Surface Hole Location									
UL	Section	Township	Range	Lot	Ft. from N/S	Ft. from E/W	Latitude	Longitude	County
P	2	25S	26E		200 FSL	1,020 FEL	32.152282	-104.258578	EDDY

Bottom Hole Location									
UL	Section	Township	Range	Lot	Ft. from N/S	Ft. from E/W	Latitude	Longitude	County
A	35	24S	26E		19 FNL	769 FEL	32.180878	-104.257598	EDDY


Dedicated Acres 1,280.32	Infill or Defining Well	Defining Well API	Overlapping Spacing Unit (Y/N)	Consolidation Code
Order Numbers.			Well Setbacks are under Common Ownership: <input type="checkbox"/> Yes <input type="checkbox"/> No	

Kick Off Point (KOP)									
UL	Section	Township	Range	Lot	Ft. from N/S	Ft. from E/W	Latitude	Longitude	County
P	2	25S	26E		100 FSL	752 FEL	32.152034	-104.257716	EDDY

First Take Point (FTP)									
UL	Section	Township	Range	Lot	Ft. from N/S	Ft. from E/W	Latitude	Longitude	County
P	2	25S	26E		100 FSL	752 FEL	32.152034	-104.257716	EDDY

Last Take Point (LTP)									
UL	Section	Township	Range	Lot	Ft. from N/S	Ft. from E/W	Latitude	Longitude	County
A	35	24S	26E		198 FNL	765 FEL	32.180386	-104.257584	EDDY

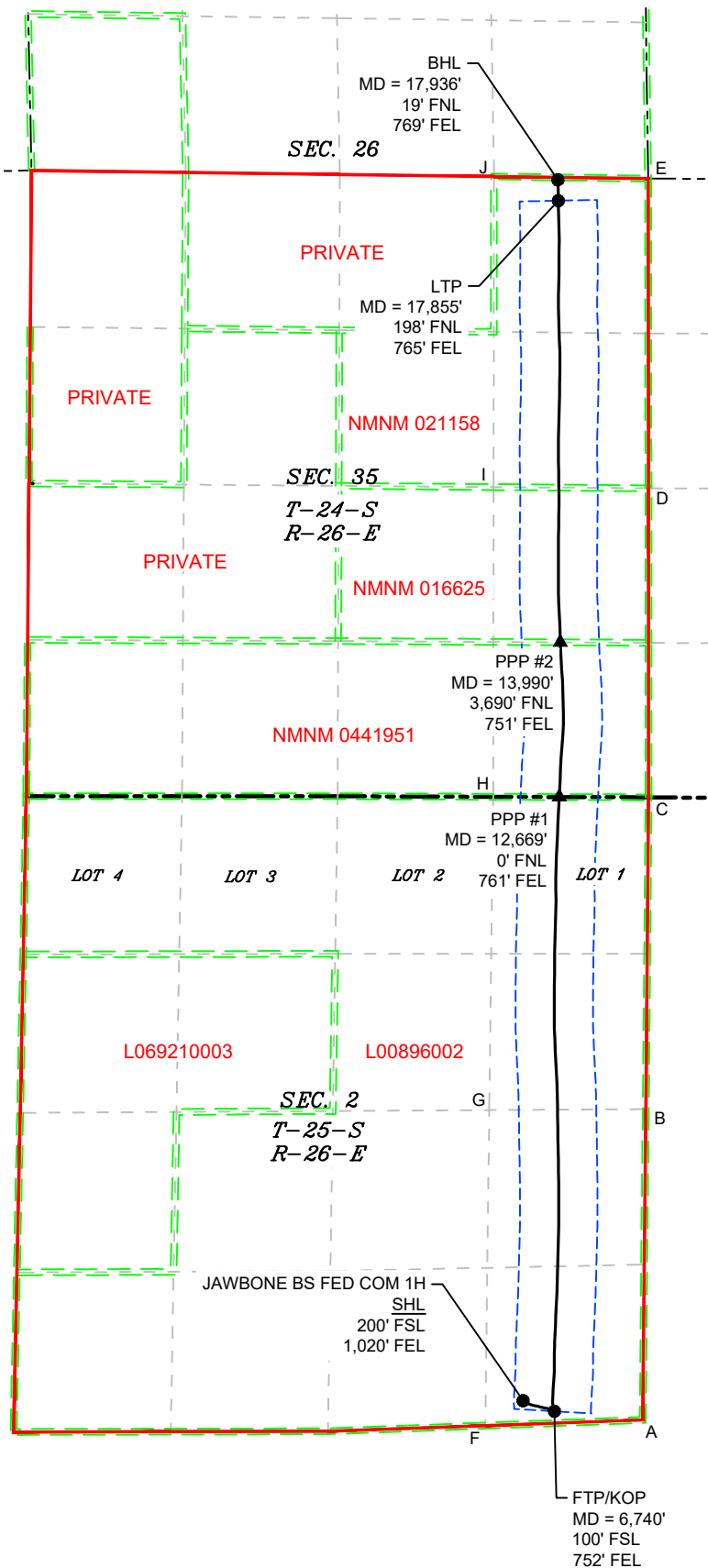
Unitized Area of Area of Interest	Spacing Unit Type : <input checked="" type="checkbox"/> Horizontal <input type="checkbox"/> Vertical	Ground Elevation 3,354'
-----------------------------------	------------------------------------------------------------------------------------------------------	-----------------------------------

<div>OPERATOR CERTIFICATIONS</div> <div><p><i>I hereby certify that the information contained herein is true and complete to the best of my knowledge and belief, and, if the well is vertical or directional well, that this organization either owns a working interest or unleased mineral interest in the land including the proposed bottom hole location or has a right to drill this at this location pursuant to a contract with an owner of a working interest or unleased mineral interest, or a voluntary pooling agreement or a compulsory pooling order of heretofore entered by the division.</i></p><p><i>If this well is a horizontal well, I further certify that this organization has received the consent of at least one lessee or owner of a working interest or unleased mineral interest in each tract (in the target pool or information) in which any part of the well's completed interval will be located or obtained a compulsory pooling order from the division.</i></p></div> <div><div>Rodney Littleton10/15/2024</div><div>SignatureDate</div><div>Rodney Littleton</div><div>Printed Name</div><div>rlittleton@freedomenergy.com</div><div>Email Address</div></div>	<div>SURVEYOR CERTIFICATIONS</div> <div><p><i>I hereby certify that the well location shown on this plat was plotted from field notes of actual surveys made by me or under my supervision, and that the same is true and correct to the best of my belief</i></p></div> <div><div></div><div><div>MARK DILLON HARP 23786</div><div>23786</div><div>618.005002.00-09</div></div></div> <div><div>Signature and Seal of Professional Surveyor</div><div>MARK DILLON HARP 2378610/11/2024</div><div>Certificate NumberDate of Survey</div><div>JP</div></div>
---------------------------------------------------------------------------------------------------------------------------------------------------------------------------------------------------------------------------------------------------------------------------------------------------------------------------------------------------------------------------------------------------------------------------------------------------------------------------------------------------------------------------------------------------------------------------------------------------------------------------------------------------------------------------------------------------------------------------------------------------------------------------------------------------------------------------------------------------------------------------------------------------------------------------------------------------------------------------------------------------------------------------------------------------------------------------------------------------------------------------------------------------------------------------------------------------------	-------------------------------------------------------------------------------------------------------------------------------------------------------------------------------------------------------------------------------------------------------------------------------------------------------------------------------------------------------------------------------------------------------------------------------------------------------------------------------------------------------------------------------------------------------------------------------------------------------------------------------------------------

Note: No allowable will be assigned to this completion until all interest have been consolidated or a non-standard unit has been approved by the division.

Surveyor shall use the latest United States government survey or dependent resurvey. Well locations will be in reference to the New Mexico Principal Meridian. If the land is not surveyed, contact the OCD Engineering Bureau. Independent subdivision surveys will not be acceptable.

SHL (NAD 83 NME)			SHL (NAD 27 NME)		
Y =	419,143.38	N	Y =	419,085.96	N
X =	564,472.45	E	X =	523,290.26	E
LAT. =	32.152282	°N	LAT. =	32.152162	°N
LONG. =	104.258578	°W	LONG. =	104.258078	°W
FTP/KOP (NAD 83 NME)			FTP/KOP (NAD 27 NME)		
Y =	419,053.44	N	Y =	418,996.01	N
X =	564,739.35	E	X =	523,557.15	E
LAT. =	32.152034	°N	LAT. =	32.151914	°N
LONG. =	104.257716	°W	LONG. =	104.257215	°W
PPP1 (NAD 83 NME)			PPP1 (NAD 27 NME)		
Y =	424,286.81	N	Y =	424,229.26	N
X =	564,780.48	E	X =	523,598.38	E
LAT. =	32.166420	°N	LAT. =	32.166300	°N
LONG. =	104.257571	°W	LONG. =	104.257070	°W
PPP2 (NAD 83 NME)			PPP2 (NAD 27 NME)		
Y =	425,604.99	N	Y =	425,547.42	N
X =	564,789.37	E	X =	523,607.30	E
LAT. =	32.170043	°N	LAT. =	32.169924	°N
LONG. =	104.257539	°W	LONG. =	104.257038	°W
LTP (NAD 83 NME)			LTP (NAD 27 NME)		
Y =	429,367.35	N	Y =	429,309.70	N
X =	564,772.71	E	X =	523,590.71	E
LAT. =	32.180386	°N	LAT. =	32.180266	°N
LONG. =	104.257584	°W	LONG. =	104.257083	°W
PTB (NAD 83 NME)			PTB (NAD 27 NME)		
Y =	429,546.26	N	Y =	429,488.60	N
X =	564,768.22	E	X =	523,586.22	E
LAT. =	32.180878	°N	LAT. =	32.180758	°N
LONG. =	104.257598	°W	LONG. =	104.257098	°W
CORNER COORDINATES (NAD 83 NME)					
A - Y =	418,979.8	N	A - X =	565,490.6	E
B - Y =	421,628.0	N	B - X =	565,516.5	E
C - Y =	424,284.1	N	C - X =	565,541.3	E
D - Y =	426,917.3	N	D - X =	565,539.2	E
E - Y =	429,555.3	N	E - X =	565,537.3	E
F - Y =	418,931.8	N	F - X =	564,150.3	E
G - Y =	421,619.9	N	G - X =	564,184.1	E
H - Y =	424,288.8	N	H - X =	564,216.9	E
I - Y =	426,927.7	N	I - X =	564,220.7	E
J - Y =	429,572.6	N	J - X =	564,224.5	E
CORNER COORDINATES (NAD 27 NME)					
A - Y =	418,922.4	N	A - X =	524,308.3	E
B - Y =	421,570.4	N	B - X =	524,334.3	E
C - Y =	424,226.6	N	C - X =	524,359.2	E
D - Y =	426,859.7	N	D - X =	524,357.2	E
E - Y =	429,497.6	N	E - X =	524,355.3	E
F - Y =	418,874.4	N	F - X =	522,968.2	E
G - Y =	421,562.5	N	G - X =	523,001.9	E
H - Y =	424,231.3	N	H - X =	523,034.8	E
I - Y =	426,870.1	N	I - X =	523,038.6	E
J - Y =	429,515.0	N	J - X =	523,042.5	E



C-102 Sumbit electronically Via OCD Permitting	State of New Mexico Energy, Minerals & Natural Resources Department OIL CONVERSION DIVISION	Revised July, 09 2024	
		Submittal Type:	<input type="checkbox"/> Initial Submittal
			<input type="checkbox"/> Amended Report
		<input checked="" type="checkbox"/> As Drilled	

WELL LOCATION INFORMATION			
API Number 30-015-49459	Pool Code 97494	Pool Name COTTONWOOD DRAW;BONE SPRING (O)	
Property Code	Property Name JAWBONE BS FED COM	Well Number 2H	
OGRID No. 374034	Operator Name FLAT CREEK RESOURCES, LLC	Ground Level Elevation 3,356'	
Surface Owner: <input checked="" type="checkbox"/> State <input type="checkbox"/> Fee <input type="checkbox"/> Tribal <input type="checkbox"/> Federal		Mineral Owner: <input type="checkbox"/> State <input type="checkbox"/> Fee <input type="checkbox"/> Tribal <input type="checkbox"/> Federal	

Surface Hole Location									
UL	Section	Township	Range	Lot	Ft. from N/S	Ft. from E/W	Latitude	Longitude	County
P	2	25S	26E		200 FSL	1,050 FEL	32.152279	-104.258675	EDDY

Bottom Hole Location									
UL	Section	Township	Range	Lot	Ft. from N/S	Ft. from E/W	Latitude	Longitude	County
B	35	24S	26E		22 FNL	2,580 FEL	32.180939	-104.263476	EDDY


Dedicated Acres 1,280.32	Infill or Defining Well	Defining Well API	Overlapping Spacing Unit (Y/N)	Consolidation Code
Order Numbers.			Well Setbacks are under Common Ownership: <input type="checkbox"/> Yes <input type="checkbox"/> No	

Kick Off Point (KOP)									
UL	Section	Township	Range	Lot	Ft. from N/S	Ft. from E/W	Latitude	Longitude	County
O	2	25S	26E		127 FSL	2,537 FEL	32.151933	-104.263484	EDDY

First Take Point (FTP)									
UL	Section	Township	Range	Lot	Ft. from N/S	Ft. from E/W	Latitude	Longitude	County
O	2	25S	26E		127 FSL	2,537 FEL	32.151933	-104.263484	EDDY

Last Take Point (LTP)									
UL	Section	Township	Range	Lot	Ft. from N/S	Ft. from E/W	Latitude	Longitude	County
B	35	24S	26E		172 FNL	2,580 FEL	32.180723	-104.263463	EDDY

Unitized Area of Area of Interest	Spacing Unit Type : <input checked="" type="checkbox"/> Horizontal <input type="checkbox"/> Vertical	Ground Elevation 3,356'
-----------------------------------	------------------------------------------------------------------------------------------------------	-----------------------------------

<div>OPERATOR CERTIFICATIONS</div> <p><i>I hereby certify that the information contained herein is true and complete to the best of my knowledge and belief, and, if the well is vertical or directional well, that this organization either owns a working interest or unleased mineral interest in the land including the proposed bottom hole location or has a right to drill this at this location pursuant to a contract with an owner of a working interest or unleased mineral interest, or a voluntary pooling agreement or a compulsory pooling order of heretofore entered by the division.</i></p> <p><i>If this well is a horizontal well, I further certify that this organization has received the consent of at least one lessee or owner of a working interest or unleased mineral interest in each tract (in the target pool or information) in which any part of the well's completed interval will be located or obtained a compulsory pooling order from the division.</i></p> <div><div>Rodney Littleton</div><div>Signature</div><div>10/15/2024</div><div>Date</div></div> <div><div>Rodney Littleton</div><div>Printed Name</div></div> <div><div>rlittleton@freedomenergy.com</div><div>Email Address</div></div>	<div>SURVEYOR CERTIFICATIONS</div> <p><i>I hereby certify that the well location shown on this plat was plotted from field notes of actual surveys made by me or under my supervision, and that the same is true and correct to the best of my belief</i></p> <div><div></div><div>Signature and Seal of Professional Surveyor</div></div> <div><div>MARK DILLON HARP 23786</div><div>Certificate Number</div><div>10/11/2024</div><div>Date of Survey</div></div> <div><div>JP</div><div>618.005002.00-10</div></div>
---------------------------------------------------------------------------------------------------------------------------------------------------------------------------------------------------------------------------------------------------------------------------------------------------------------------------------------------------------------------------------------------------------------------------------------------------------------------------------------------------------------------------------------------------------------------------------------------------------------------------------------------------------------------------------------------------------------------------------------------------------------------------------------------------------------------------------------------------------------------------------------------------------------------------------------------------------------------------------------------------------------------------------------------------------------------------------------------------------------------------------------------------------------------------------------------------------------------------------------------	------------------------------------------------------------------------------------------------------------------------------------------------------------------------------------------------------------------------------------------------------------------------------------------------------------------------------------------------------------------------------------------------------------------------------------------------------------------------------------------------------------------------------------------------------------------------------------------------------------

Note: No allowable will be assigned to this completion until all interest have been consolidated or a non-standard unit has been approved by the division.

ACREAGE DEDICATION PLATS

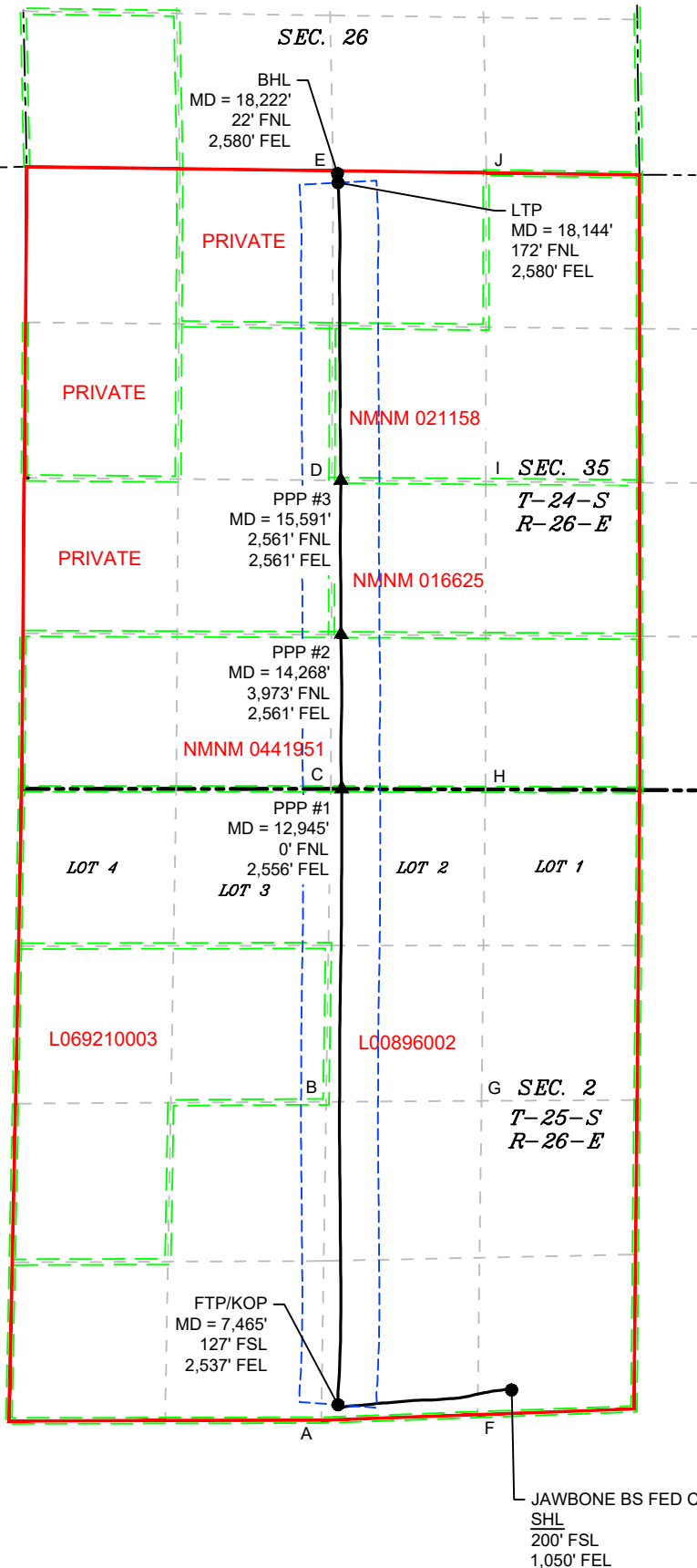
This grid represents a standard section. You may superimpose a non-standard section, or larger area, over this grid. Operators must outline the dedicated acreage in a red box, clearly show the well surface location and bottom hole location, if it is a directionally drilled, with the dimensions from the section lines in the cardinal directions. If this is a horizontal wellbore show on this plat the location of the First Take Point and Last Take Point, and the point within the Completed interval (other then the First Take Point and Last Take Point) that is closest to any outer boundary of the tract.

Surveyor shall use the latest United States government survey or dependent resurvey. Well locations will be in reference to the New Mexico Principal Meridian. If the land in not surveyed, contact the OCD Engineering Bureau. Independent subdivision surveys will not be acceptable.

LEGEND

- SECTION LINE
- PROPOSED WELL BORE
- NEW MEXICO MINERAL LEASE
- 330' BUFFER
- ALLOCATION AREA

LOT ACREAGE TABLE
SECTION 2
T-25-S, R-26-E
LOT 1 = 40.20 ACRES
LOT 2 = 40.12 ACRES
LOT 3 = 40.04 ACRES
LOT 4 = 39.96 ACRES



COORDINATE TABLE	
SHL (NAD 83 NME)	SHL (NAD 27 NME)
Y = 419,142.32 N	Y = 419,084.89 N
X = 564,442.44 E	X = 523,260.25 E
LAT. = 32.152279 °N	LAT. = 32.152159 °N
LONG. = 104.258675 °W	LONG. = 104.258175 °W
FTP/KOP (NAD 83 NME)	FTP/KOP (NAD 27 NME)
Y = 419,015.58 N	Y = 418,958.18 N
X = 562,954.09 E	X = 521,771.92 E
LAT. = 32.151933 °N	LAT. = 32.151813 °N
LONG. = 104.263484 °W	LONG. = 104.262984 °W
PPP1 (NAD 83 NME)	PPP1 (NAD 27 NME)
Y = 424,293.14 N	Y = 424,235.63 N
X = 562,984.85 E	X = 521,802.78 E
LAT. = 32.166441 °N	LAT. = 32.166321 °N
LONG. = 104.263374 °W	LONG. = 104.262873 °W
PPP2 (NAD 83 NME)	PPP2 (NAD 27 NME)
Y = 425,615.25 N	Y = 425,557.71 N
X = 562,979.53 E	X = 521,797.48 E
LAT. = 32.170075 °N	LAT. = 32.169955 °N
LONG. = 104.263388 °W	LONG. = 104.262887 °W
PPP3 (NAD 83 NME)	PPP3 (NAD 27 NME)
Y = 426,937.37 N	Y = 426,879.81 N
X = 562,977.93 E	X = 521,795.91 E
LAT. = 32.173709 °N	LAT. = 32.173590 °N
LONG. = 104.263391 °W	LONG. = 104.262890 °W
LTP (NAD 83 NME)	LTP (NAD 27 NME)
Y = 429,488.81 N	Y = 429,431.19 N
X = 562,953.78 E	X = 521,771.81 E
LAT. = 32.180723 °N	LAT. = 32.180604 °N
LONG. = 104.263463 °W	LONG. = 104.262962 °W
PTB (NAD 83 NME)	PTB (NAD 27 NME)
Y = 429,567.15 N	Y = 429,509.53 N
X = 562,949.68 E	X = 521,767.71 E
LAT. = 32.180939 °N	LAT. = 32.180819 °N
LONG. = 104.263476 °W	LONG. = 104.262975 °W
CORNER COORDINATES (NAD 83 NME)	
A - Y = 418,883.8 N	A - X = 562,810.1 E
B - Y = 421,611.9 N	B - X = 562,851.7 E
C - Y = 424,293.5 N	C - X = 562,892.5 E
D - Y = 426,938.0 N	D - X = 562,902.1 E
E - Y = 429,590.0 N	E - X = 562,911.7 E
F - Y = 418,931.8 N	F - X = 564,150.3 E
G - Y = 421,619.9 N	G - X = 564,184.1 E
H - Y = 424,288.8 N	H - X = 564,216.9 E
I - Y = 426,927.7 N	I - X = 564,220.7 E
J - Y = 429,572.6 N	J - X = 564,224.5 E
CORNER COORDINATES (NAD 27 NME)	
A - Y = 418,826.4 N	A - X = 521,628.0 E
B - Y = 421,554.5 N	B - X = 521,669.6 E
C - Y = 424,236.0 N	C - X = 521,710.5 E
D - Y = 426,880.4 N	D - X = 521,720.1 E
E - Y = 429,532.4 N	E - X = 521,729.7 E
F - Y = 418,874.4 N	F - X = 522,968.2 E
G - Y = 421,562.5 N	G - X = 523,001.9 E
H - Y = 424,231.3 N	H - X = 523,034.8 E
I - Y = 426,870.1 N	I - X = 523,038.6 E
J - Y = 429,515.0 N	J - X = 523,042.5 E

C-102 Sumbit electronically Via OCD Permitting	State of New Mexico Energy, Minerals & Natural Resources Department OIL CONVERSION DIVISION	Revised July, 09 2024	
		Submittal Type:	<input type="checkbox"/> Initial Submittal
			<input type="checkbox"/> Amended Report
		<input checked="" type="checkbox"/> As Drilled	

WELL LOCATION INFORMATION			
API Number 30-015-49664	Pool Code 97494	Pool Name COTTONWOOD DRAW;BONE SPRING (O)	
Property Code	Property Name JAWBONE BS FED COM	Well Number 3H	
OGRID No. 374034	Operator Name FLAT CREEK RESOURCES, LLC	Ground Level Elevation 3,381'	
Surface Owner: <input checked="" type="checkbox"/> State <input type="checkbox"/> Fee <input type="checkbox"/> Tribal <input type="checkbox"/> Federal		Mineral Owner: <input type="checkbox"/> State <input type="checkbox"/> Fee <input type="checkbox"/> Tribal <input type="checkbox"/> Federal	

Surface Hole Location									
UL	Section	Township	Range	Lot	Ft. from N/S	Ft. from E/W	Latitude	Longitude	County
M	2	25S	26E		396 FSL	1,156 FWL	32.152652	-104.268836	EDDY

Bottom Hole Location									
UL	Section	Township	Range	Lot	Ft. from N/S	Ft. from E/W	Latitude	Longitude	County
D	35	24S	26E		23 FNL	690 FWL	32.181013	-104.269858	EDDY


Dedicated Acres 1,280.32	Infill or Defining Well	Defining Well API	Overlapping Spacing Unit (Y/N)	Consolidation Code
Order Numbers.			Well Setbacks are under Common Ownership: <input type="checkbox"/> Yes <input type="checkbox"/> No	

Kick Off Point (KOP)									
UL	Section	Township	Range	Lot	Ft. from N/S	Ft. from E/W	Latitude	Longitude	County
M	2	25S	26E		100 FSL	671 FWL	32.151836	-104.270423	EDDY

First Take Point (FTP)									
UL	Section	Township	Range	Lot	Ft. from N/S	Ft. from E/W	Latitude	Longitude	County
M	2	25S	26E		100 FSL	671 FWL	32.151836	-104.270423	EDDY

Last Take Point (LTP)									
UL	Section	Township	Range	Lot	Ft. from N/S	Ft. from E/W	Latitude	Longitude	County
D	35	24S	26E		100 FNL	685 FWL	32.180800	-104.269873	EDDY

Unitized Area of Area of Interest	Spacing Unit Type : <input checked="" type="checkbox"/> Horizontal <input type="checkbox"/> Vertical	Ground Elevation 3,381'
-----------------------------------	------------------------------------------------------------------------------------------------------	-----------------------------------

<div>OPERATOR CERTIFICATIONS</div> <div><p><i>I hereby certify that the information contained herein is true and complete to the best of my knowledge and belief, and, if the well is vertical or directional well, that this organization either owns a working interest or unleased mineral interest in the land including the proposed bottom hole location or has a right to drill this at this location pursuant to a contract with an owner of a working interest or unleased mineral interest, or a voluntary pooling agreement or a compulsory pooling order of heretofore entered by the division.</i></p><p><i>If this well is a horizontal well, I further certify that this organization has received the consent of at least one lessee or owner of a working interest or unleased mineral interest in each tract (in the target pool or information) in which any part of the well's completed interval will be located or obtained a compulsory pooling order from the division.</i></p></div> <div><div>Rodney Littleton10/15/2024</div><div>SignatureDate</div><div>Rodney Littleton</div><div>Printed Name</div><div>rlittleton@freedomenergy.com</div><div>Email Address</div></div>	<div>SURVEYOR CERTIFICATIONS</div> <div><p><i>I hereby certify that the well location shown on this plat was plotted from field notes of actual surveys made by me or under my supervision, and that the same is true and correct to the best of my belief</i></p></div> <div><div></div><div><div>MARK DILLON HARP 23786</div><div>23786</div><div>618.005002.00-11</div></div></div> <div><div>Signature and Seal of Professional Surveyor</div><div>MARK DILLON HARP 2378610/11/2024</div><div>Certificate NumberDate of Survey</div><div>JP</div></div>
---------------------------------------------------------------------------------------------------------------------------------------------------------------------------------------------------------------------------------------------------------------------------------------------------------------------------------------------------------------------------------------------------------------------------------------------------------------------------------------------------------------------------------------------------------------------------------------------------------------------------------------------------------------------------------------------------------------------------------------------------------------------------------------------------------------------------------------------------------------------------------------------------------------------------------------------------------------------------------------------------------------------------------------------------------------------------------------------------------------------------------------------------------------------------------------------------------	-------------------------------------------------------------------------------------------------------------------------------------------------------------------------------------------------------------------------------------------------------------------------------------------------------------------------------------------------------------------------------------------------------------------------------------------------------------------------------------------------------------------------------------------------------------------------------------------------------------------------------------------------

Note: No allowable will be assigned to this completion until all interest have been consolidated or a non-standard unit has been approved by the division.

ACREAGE DEDICATION PLATS

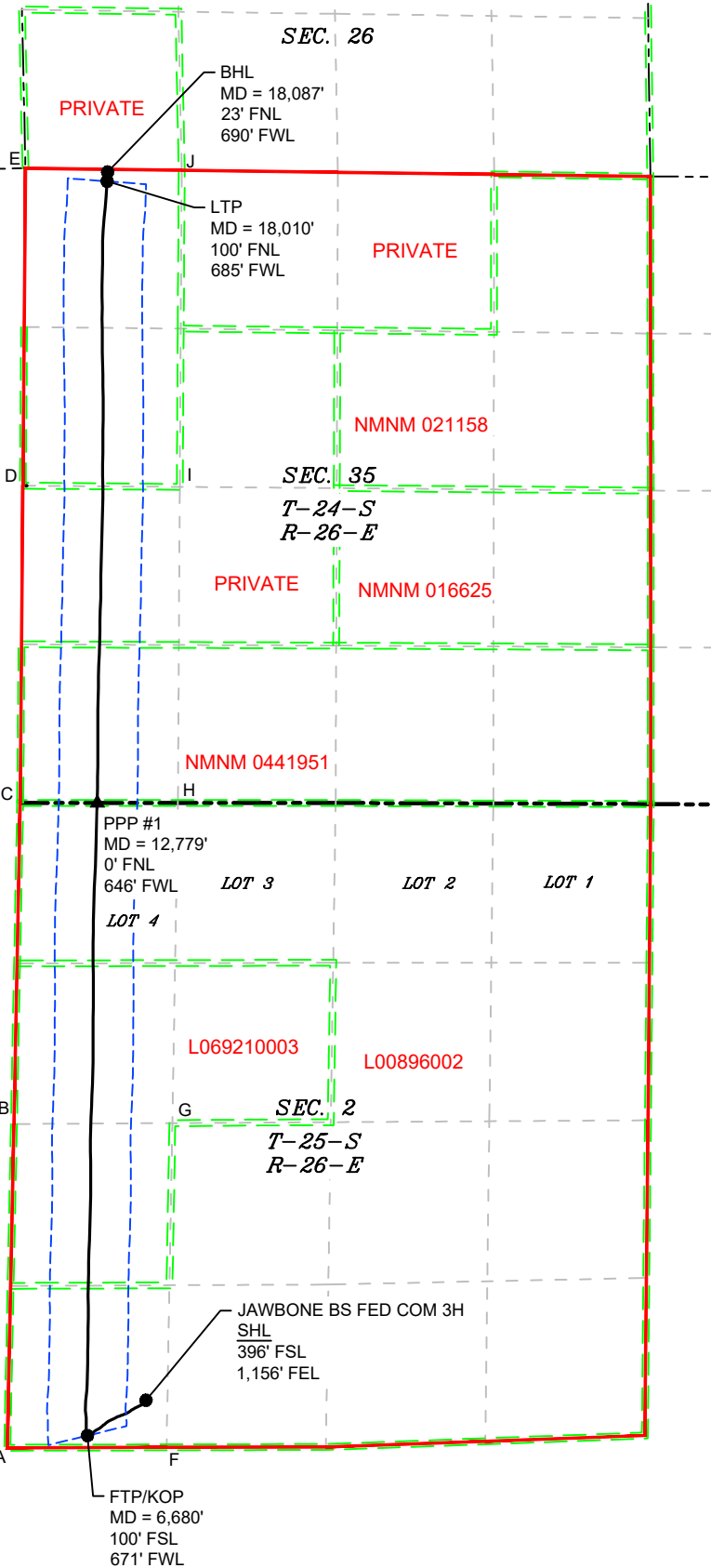
This grid represents a standard section. You may superimpose a non-standard section, or larger area, over this grid. Operators must outline the dedicated acreage in a red box, clearly show the well surface location and bottom hole location, if it is a directionally drilled, with the dimensions from the section lines in the cardinal directions. If this is a horizontal wellbore show on this plat the location of the First Take Point and Last Take Point, and the point within the Completed interval (other then the First Take Point and Last Take Point) that is closest to any outer boundary of the tract.

Surveyor shall use the latest United States government survey or dependent resurvey. Well locations will be in reference to the New Mexico Principal Meridian. If the land in not surveyed, contact the OCD Engineering Bureau. Independent subdivision surveys will not be acceptable.

LOT ACREAGE TABLE
SECTION 2
T-25-S, R-26-E
LOT 1 = 40.20 ACRES
LOT 2 = 40.12 ACRES
LOT 3 = 40.04 ACRES
LOT 4 = 39.96 ACRES

LEGEND

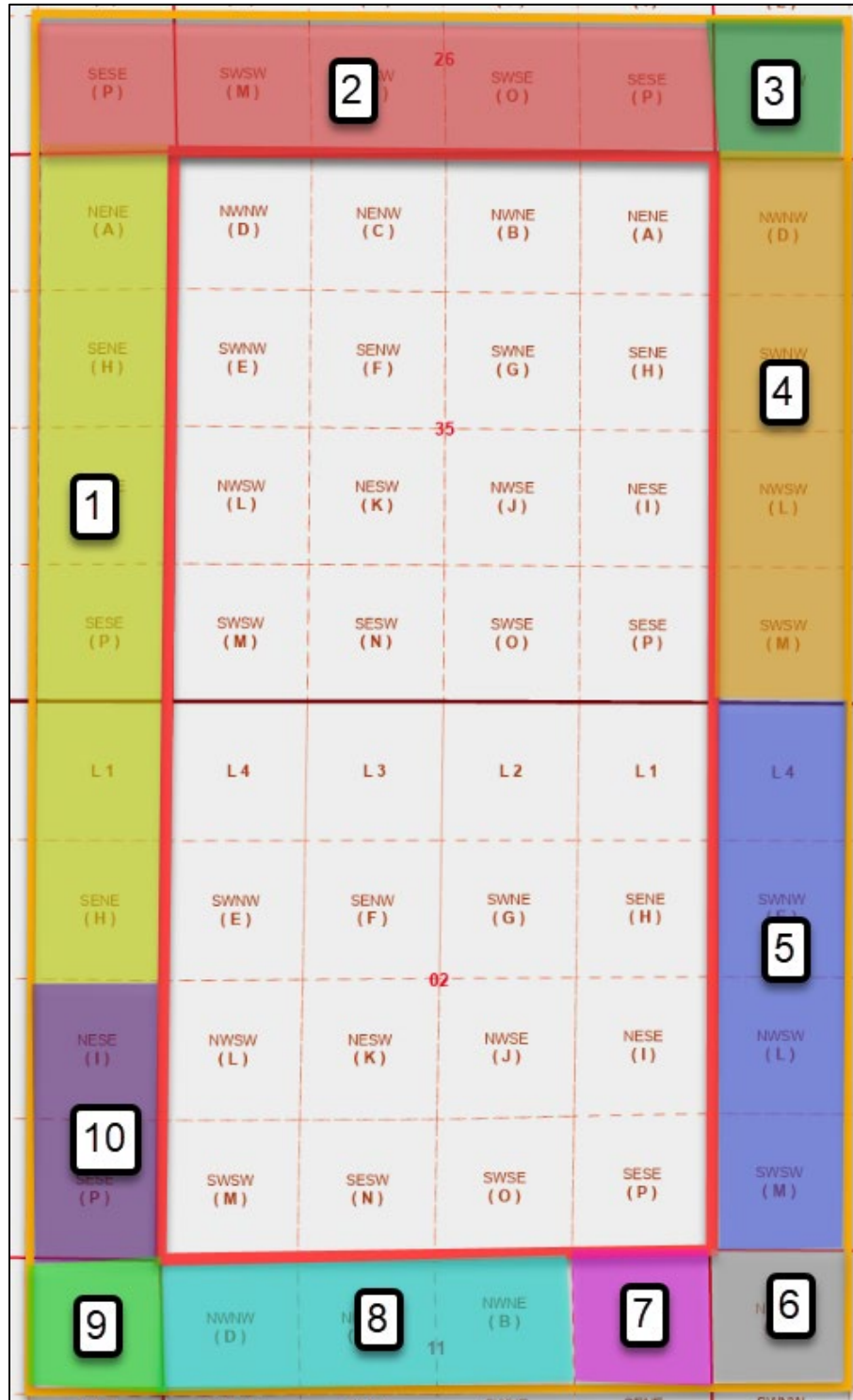
- SECTION LINE
- PROPOSED WELL BORE
- NEW MEXICO MINERAL LEASE
- 330' BUFFER
- ALLOCATION AREA



COORDINATE TABLE			
SHL (NAD 83 NME)		SHL (NAD 27 NME)	
Y =	419,275.96 N	Y =	419,218.59 N
X =	561,297.74 E	X =	520,115.59 E
LAT. =	32.152652 °N	LAT. =	32.152532 °N
LONG. =	104.268836 °W	LONG. =	104.268335 °W
FTP/KOP (NAD 83 NME)		FTP/KOP (NAD 27 NME)	
Y =	418,979.09 N	Y =	418,921.73 N
X =	560,806.66 E	X =	519,624.52 E
LAT. =	32.151836 °N	LAT. =	32.151717 °N
LONG. =	104.270423 °W	LONG. =	104.269923 °W
PPP1 (NAD 83 NME)		PPP1 (NAD 27 NME)	
Y =	424,292.77 N	Y =	424,235.30 N
X =	560,888.11 E	X =	519,706.07 E
LAT. =	32.166443 °N	LAT. =	32.166324 °N
LONG. =	104.270150 °W	LONG. =	104.269649 °W
LTP (NAD 83 NME)		LTP (NAD 27 NME)	
Y =	429,515.50 N	Y =	429,457.91 N
X =	560,970.62 E	X =	519,788.68 E
LAT. =	32.180800 °N	LAT. =	32.180681 °N
LONG. =	104.269873 °W	LONG. =	104.269372 °W
PTB (NAD 83 NME)		PTB (NAD 27 NME)	
Y =	429,592.84 N	Y =	429,535.25 N
X =	560,975.35 E	X =	519,793.41 E
LAT. =	32.181013 °N	LAT. =	32.180893 °N
LONG. =	104.269858 °W	LONG. =	104.269357 °W
CORNER COORDINATES (NAD 83 NME)			
A - Y =	418,877.2 N	A - X =	560,133.5 E
B - Y =	421,595.9 N	B - X =	560,189.3 E
C - Y =	424,292.6 N	C - X =	560,241.8 E
D - Y =	426,958.6 N	D - X =	560,264.0 E
E - Y =	429,624.7 N	E - X =	560,286.1 E
F - Y =	418,880.5 N	F - X =	561,471.8 E
G - Y =	421,603.9 N	G - X =	561,520.5 E
H - Y =	424,293.0 N	H - X =	561,567.2 E
I - Y =	426,948.3 N	I - X =	561,583.0 E
J - Y =	429,607.3 N	J - X =	561,598.9 E
CORNER COORDINATES (NAD 27 NME)			
A - Y =	418,819.8 N	A - X =	518,951.4 E
B - Y =	421,538.5 N	B - X =	519,007.2 E
C - Y =	424,235.1 N	C - X =	519,059.8 E
D - Y =	426,901.1 N	D - X =	519,082.0 E
E - Y =	429,567.1 N	E - X =	519,104.2 E
F - Y =	418,823.1 N	F - X =	520,289.7 E
G - Y =	421,546.5 N	G - X =	520,338.4 E
H - Y =	424,235.5 N	H - X =	520,385.1 E
I - Y =	426,890.7 N	I - X =	520,401.0 E
J - Y =	429,549.7 N	J - X =	520,416.9 E

Proposed Non-Standard Horizontal Spacing Unit

Jawbone BS Fed Com Nos. 1H, 2H and 3H Wells
Section 2, 25S-26E & Section 35, 24S-26E, Eddy County, NM



Affected Persons

Type	Certified Mail Tracking No.	Plat Tract	Legal Description (All in Eddy Co., NM)	Owner	Address	City	State	Zip
BLM	9414 7118 9956 1402 2497 09	3 5 6 7, 8 9 1, 10 1	SW/4 SW/4 of Section 25, 24S-26E; W/2 W/2 of Section 1, 25S-26E; NW/4 NW/4 of Section 12, 25S-26E; N/2 N/2 of Section 11, 25S-26E; NE/4 NE/4 of Section 10, 25S-26E; E/2 E/2 of Section 3, 25S-26E; SE/4 SE/4 of Section 34, 24S-26E	Bureau of Land Management	301 Dinosaur Trail	Santa Fe	NM	87508
State	9414 7118 9956 1402 2479 96	4	W/2 W/2 of Section 36, 24S-26E	New Mexico State Land Office	310 Old Santa Fe Trail	Santa Fe	NM	87504-1148
Operator via JOA	No notice required	1	E/2 E/2 of Section 34, 24S-26E; E/2 NE/4 of Section 3, 25S-26E	FE Permian Owner I, LLC (affiliate of applicant)	777 Main Street, Suite 3200	Fort Worth	TX	76102
Operator	9414 7118 9956 1402 2925 52	2 3 5 6 7 10	S/2 S/2 of Sec 26 & SE/4 SE/4 of Sec 27, 24S-26E SW/4 SW/4 of Section 25, 24S-26E W/2 W/2 of Section 1, 25S-26E NW/4 NW/4 of Section 12, 25S-26E NE/4 NE/4 of Section 11, 25S-26E E/2 SE/4 of Section 3, 25S-26E	Coterra Energy Inc.	6001 Deauville Blvd., Ste N3.047	Midland	TX	79706
Fee Leasehold Owner	9414 7118 9956 1402 2227 02	4	W/2 W/2 of Section 36, 24S-26E	Cimarex Energy Co.	6001 Deauville Blvd., Ste N3.047	Midland	TX	79706
NMNM 019423 Lessee of Record		9	NE/4 NE/4 of Section 10, 25S-26E					
NMNM 014468 Lessee of Record	9414 7118 9956 1402 2526 93	8	N/2 NW/4 & NW/4 NE/4 of Section 11, 25S-26E	EOG Resources Inc.	1111 Bagby Street, Sky Lobby 2	Houston	TX	77002



October 24, 2024

SENT VIA CERTIFIED MAIL

TO: Affected Persons

RE: Application for Non-Standard Proration Unit
Jawbone BS Fed Com 1H, 2H and 3H
Section 2, 25S-26E & Section 35, 24S-26E (the "Lands")
Eddy County, New Mexico

To Whom It May Concern,

Enclosed is a copy of Flat Creek Resources, LLC's ("Flat Creek") application for a Non-Standard Proration Unit (the "NSP Application") for the following wells:

- Jawbone BS Fed Com 1H (API No. 30-015-49457)
- Jawbone BS Fed Com 2H (API No. 30-015-49459)
- Jawbone BS Fed Com 3H (API No. 30-015-49664)

The NSP Application was filed with the New Mexico Oil Conservation Division ("OCD") on this date. You are being sent a copy of the NSP Application per OCD's requirements to notify the interest owners in the offset acreage. Any objection to this application must be filed in writing within twenty (20) days from this date with the applicant and the OCD. If no objection is received within this twenty-day period, this application may be administratively approved by the OCD.

Please note that the OCD previously issued orders for three (3) spacing units collectively covering the Lands, being Order Nos. R-23053, R-23054 and R-23055. The NSP Application is to combine these spacing units into one (1) larger spacing unit covering the entirety of the Lands.

If you have any questions concerning this application, you may contact me at (817) 310-8572 or mgregory@freedomenergy.com.

Sincerely,

Flat Creek Resources, LLC

A handwritten signature in blue ink, appearing to read "Mike Gregory".

Mike Gregory, CPL
Vice President - Land

Sante Fe Main Office
Phone: (505) 476-3441

General Information
Phone: (505) 629-6116

Online Phone Directory
<https://www.emnrd.nm.gov/oed/contact-us>

State of New Mexico
Energy, Minerals and Natural Resources
Oil Conservation Division
1220 S. St Francis Dr.
Santa Fe, NM 87505

CONDITIONS

Action 396023

CONDITIONS

Operator: Flat Creek Resources, LLC 777 Main St. Fort Worth, TX 76102	OGRID: 374034
	Action Number: 396023
	Action Type: [UF-NSP] Non-Standard Proration (NSP)

CONDITIONS

Created By	Condition	Condition Date
llowe	None	10/28/2024