

State of New Mexico
Energy, Minerals and Natural Resources Department

Michelle Lujan Grisham
Governor

Melanie A. Kenderdine
Cabinet Secretary

Ben Shelton
Deputy Secretary

Erin Taylor
Deputy Secretary

Albert C.S. Chang
Division Director
Oil Conservation Division



Paula M. Vance
pmvance@hollandhart.com

ADMINISTRATIVE NON-STANDARD LOCATION

Administrative Order NSL – 9131

XTO Permian Operating, LLC [OGRID 373075]
Muy Wayno 18 7 Federal Com Well No. 401H
API No. 30-015-57092

Reference is made to your application received on September 15th, 2025.

Proposed Location

	Footages	Unit/Lot	Sec.	Twsp	Range	County
Surface	1626 FSL & 1315 FWL	L/3	18	25S	30E	Eddy
First Take Point	2560 FNL & 204 FWL	E/2	18	25S	30E	Eddy
Last Take Point	100 FNL & 335 FWL	D/1	07	25S	30E	Eddy
Terminus	10 FNL & 335 FWL	D/1	07	25S	30E	Eddy

Proposed NSL Horizontal Unit

Description	Acres	Pool	Pool Code
NW/4 Section 18 W/2 Section 07	483.44	Corral Canyon; Bone Spring, South	13354

You have requested to drill this horizontal well at an unorthodox well location described above in the referenced pool or formation. 19.15.16.15(B)(1)(a) NMAC governs this proposed well and provides that the operator dedicate a horizontal well at a standard horizontal spacing unit that comprises of one or more contiguous tracts that the horizontal well's completed interval penetrates, each of which consists of a governmental quarter - quarter section or equivalent. 19.15.16.15(C)(1)(a) NMAC governs the distance in the horizontal plane from any point in the

Administrative Order NSL – 9131
XTO Permian Operating, LLC
Page 2 of 2

completed interval to any outer boundary of the horizontal spacing unit, measured along a line perpendicular to the completed interval or to the tangent thereof, shall be a minimum of 330 feet for an oil well. 19.15.16.15(C)(1)(b) NMAC governs the first and last take point of a horizontal well shall be no closer than 100 feet for a well within the horizontal plane, to any outer boundary of the horizontal spacing unit.

The request to deviate from an orthodox location has met all requirements of 19.15.16.15 (C)(5)(a) NMAC. It is understood that you are seeking this exception in order to create a non-standard location, comprised of Take Points referenced above, within the described Horizontal Spacing Unit.

This well's completed interval is as close as 80 feet to the western edge of the horizontal spacing unit. Encroachment will impact the following tracts.

Section 18, encroachment to the SW/4 NE/4

The Division understands you have given notice of this application to all operators or owners who are "affected persons," as defined in 19.15.2.7(A)(8) NMAC, in all adjoining units towards which the proposed location encroaches.

The Division understands you are seeking this unorthodox location as its preferred well spacing plan for horizontal wells within the Bone Spring formation underlying the NW/4 Section 18 and the W/2 Section 07 and thereby increasing recovery of resources and preventing waste.

Your application has been filed under 19.15.16.15(C)(6) NMAC, 19.15.15.13 NMAC and 19.15.4.12 (A)(2) NMAC.

Per 19.15.15.13 (B) NMAC, **Division approves this unorthodox location.**

Reference this NSL order number on the As Drilled C-102 submitted with the Authorization to Transport, to place this well into production.

The above approvals are subject to your following all other applicable Division rules.

Jurisdiction of this case is retained for the entry of further orders as the Division deems necessary.



Albert C.S. Chang
Division Director
AC/lrl

Date: 12/20/2025

ID NO. 506007

NSL - 9131

Revised March 23, 2017

RECEIVED: 09/15/25	REVIEWER:	TYPE:	APP NO:
---------------------------	-----------	-------	---------

ABOVE THIS TABLE FOR OCD DIVISION USE ONLY

NEW MEXICO OIL CONSERVATION DIVISION
 - Geological & Engineering Bureau -
 1220 South St. Francis Drive, Santa Fe, NM 87505

**ADMINISTRATIVE APPLICATION CHECKLIST**

THIS CHECKLIST IS MANDATORY FOR ALL ADMINISTRATIVE APPLICATIONS FOR EXCEPTIONS TO DIVISION RULES AND
 REGULATIONS WHICH REQUIRE PROCESSING AT THE DIVISION LEVEL IN SANTA FE

Applicant: XTO Permian Operating, LLC **OGRID Number:** 373075
Well Name: Muy Wayno 18-7 Federal Com 401H **API:** 30-015-57092
Pool: Corral Canyon; Bone Spring, South **Pool Code:** 13354

**SUBMIT ACCURATE AND COMPLETE INFORMATION REQUIRED TO PROCESS THE TYPE OF APPLICATION
 INDICATED BELOW**

- 1) **TYPE OF APPLICATION:** Check those which apply for [A]
- A. Location – Spacing Unit – Simultaneous Dedication
☒ NSL ☐ NSP (PROJECT AREA) ☐ NSP (PRORATION UNIT) ☐ SD
- B. Check one only for [I] or [II]
- [I] Commingling – Storage – Measurement
☐ DHC ☐ CTB ☐ PLC ☐ PC ☐ OLS ☐ OLM
- [II] Injection – Disposal – Pressure Increase – Enhanced Oil Recovery
☐ WFX ☐ PMX ☐ SWD ☐ IPI ☐ EOR ☐ PPR
- 2) **NOTIFICATION REQUIRED TO:** Check those which apply.
- A. ☒ Offset operators or lease holders
 B. ☐ Royalty, overriding royalty owners, revenue owners
 C. ☐ Application requires published notice
 D. ☐ Notification and/or concurrent approval by SLO
 E. ☒ Notification and/or concurrent approval by BLM
 F. ☐ Surface owner
 G. ☐ For all of the above, proof of notification or publication is attached, and/or,
 H. ☐ No notice required

FOR OCD ONLY

- ☐ Notice Complete
- ☐ Application
Content
Complete

- 3) **CERTIFICATION:** I hereby certify that the information submitted with this application for administrative approval is **accurate** and **complete** to the best of my knowledge. I also understand that **no action** will be taken on this application until the required information and notifications are submitted to the Division.

Note: Statement must be completed by an individual with managerial and/or supervisory capacity.

Paula M. Vance

Print or Type Name

Signature

September 15, 2025

Date

505-954-7286

Phone Number

pmvance@hollandhart.com

e-mail Address



Paula M. Vance
Associate
Phone (505) 954-7286
PMVance@hollandhart.com

September 15, 2025

VIA ONLINE FILING

Albert Chang, Division Director
Oil Conservation Division
Energy, Minerals and Natural Resources Department
1220 South Saint Francis Drive
Santa Fe, New Mexico 87505

Re: XTO Permian Operating, LLC.
Request for Administrative Approval of Unorthodox Well Location

Muy Wayno 18-7 Federal Com 401H well
Lots 1-4 and the E/2 W/2 (W/2 equivalent) of irregular Section 7, and Lots 1-2 and the E/2 NW/4 (NW/4 equivalent) of irregular Section 18, Township 25 South, Range 30 East
Eddy County, New Mexico
Corral Canyon, Bone Spring, South [Pool 13354]
API No. 30-015-57092

Dear Mr. Chang:

XTO Permian Operating, LLC (OGRID No. 373075) ("XTO"), pursuant to Division Rules 19.15.16.15(C)(6) and 19.15.15.13 NMAC and applicable rules governing acreage and well location requirements for the Corral Canyon, Bone Spring, South [Pool 13354], seeks administrative approval of an unorthodox well location for its **Muy Wayno 18-7 Federal Com 401H** well (API No. 30-015-57092), in a 483.44-acre, more or less, spacing unit underlying Lots 1-4 and the E/2 W/2 (W/2 equivalent) of irregular Section 7, and Lots 1-2 and the E/2 NW/4 (NW/4 equivalent) of irregular Section 18, Township 25 South, Range 30 East, NMPM, Eddy County, New Mexico.

The **Muy Wayno 18-7 Federal Com 401H** oil well is an infill well. The **Muy Wayno 18 Federal Com 402H** oil well is the defining well, creating the enlarged spacing unit.

The location for the **Muy Wayno 18-7 Federal Com 401H** is as follows:

- Surface location: 1,626' FSL and 1,315 FWL (Lot 3) of irregular Section 18
- First take point: 2,560' FNL and 204' FWL (Lot 2) of irregular Section 18
- Last take point: 100' FNL and 335' FWL (Lot 1) of irregular Section 7
- Bottom hole location: 10' FNL and 335' FWL (Lot 1) of irregular Section 7

T 505.988.4421 F 505.983.6043
110 North Guadalupe, Suite 1, Santa Fe, NM 87501-1849
Mail to: P.O. Box 2208, Santa Fe, NM 87504-2208
www.hollandhart.com

Alaska	Montana	Utah
Colorado	Nevada	Washington, D.C.
Idaho	New Mexico	Wyoming



Paula M. Vance
Associate
Phone (505) 954-7286
 PMVance@hollandhart.com

Since this acreage is governed by state rules for oil wells, a portion of the proposed interval for this well is unorthodox because it is closer than the standard offsets to the western boundary of the spacing unit—thus, encroaching on the spacing unit to the west comprising Sections 12 and 13, T25S-R29E (OXY’s Corral Gorge spacing unit).

XTO respectfully requests administrative approval for the non-standard location for the Muy Wayno 18-7 Federal Com 401H well because it is necessary to allow XTO to use its preferred well spacing plan for horizontal wells in this area, which will maximize recovery and prevent waste.

Exhibit A is a Form C-102 showing the proposed Muy Wayno 18-7 Federal Com 401H well encroaches on OXY’s Corral Gorge spacing unit. Also, included is the Form C-102 for the Muy Wayno 18 Federal Com 402H, the defining well for the spacing unit.

Exhibit B is a plat for the subject area, that shows the Muy Wayno 18-7 Federal Com 401H well in relation to the adjoining Corral Gorge acreage. Exhibit B also includes an ownership list for the Corral Gorge, showing that it is operated by OXY USA Inc (“OXY”). In addition, the exhibit identifies the Bureau of Land Management (“BLM”) as an affected party since the Corral Gorge spacing unit includes federal leases. Accordingly, the “affected persons”¹ are listed in the table below.

Exhibit C is a spreadsheet listing all affected persons and includes tracking information demonstrating that each of the affected persons was sent a copy of this application with all attachments by certified mail advising that any objections must be filed in writing with the Division within 20 days from the date the Division receives the application. The following are the affected persons:

Type	Affected Party	Location
Operator	OXY USA, Inc.	Sections 12 and 13, T25S-R29E (OXY’s Corral Gorge spacing unit)
Federal Mineral Interest	Bureau of Land Management	

¹ See NMAC §§ 19.15.2.7.A(8) [defining “affected persons” as, “in the absence of an operator, or with respect to an application wherein the operator of the spacing unit or identified tract is the applicant, each working interest owner”] and 19.15.4.12.A(2)(a).



Paula M. Vance
Associate
Phone (505) 954-7286
PMVance@hollandhart.com

Your attention to this matter is appreciated.

Sincerely,

A handwritten signature in blue ink, appearing to read "Paula M. Vance".

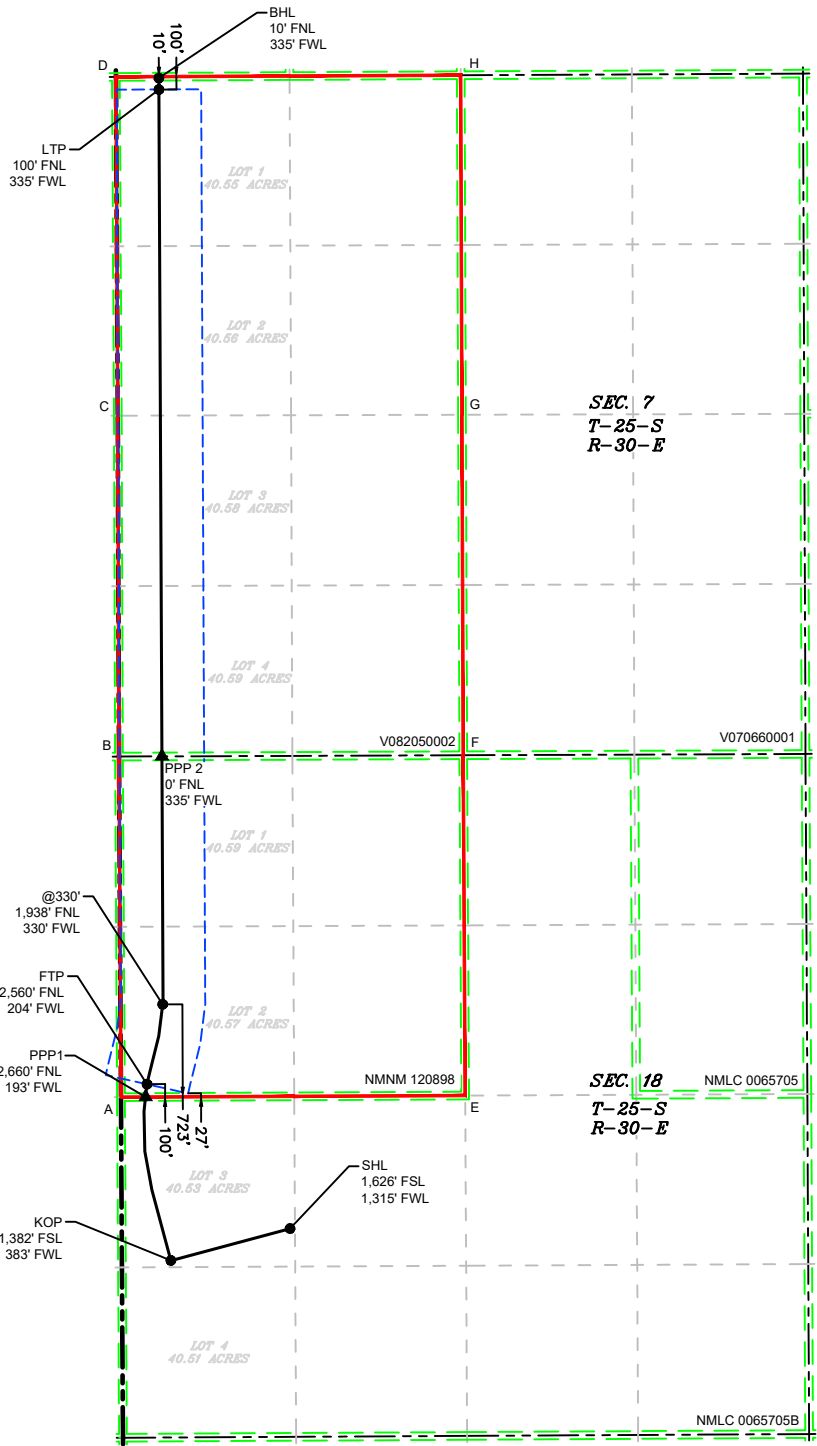
Paula M. Vance
ATTORNEY FOR XTO PERMIAN, LLC

T 505.988.4421 F 505.983.6043
110 North Guadalupe, Suite 1, Santa Fe, NM 87501-1849
Mail to: P.O. Box 2208, Santa Fe, NM 87504-2208
www.hollandhart.com

Alaska	Montana	Utah
Colorado	Nevada	Washington, D.C.
Idaho	New Mexico	Wyoming

This grid represents a standard section. You may superimpose a non-standard section, or larger area, over this grid. Operators must outline the dedicated areage in a red box, clearly show the well surface location and bottom hole location, if it is directionally drilled, with the dimensions from the section lines in the cardinal directions. If this is a horizontal wellbore show on this plat the location of the First Take Point and Last Take Point, and the point within the completed interval (other than the First Take Point or Last Take Point) that is closest to any outer boundary of the tract.

Surveyors shall use the latest United States government survey or dependent resurvey. Well Locations will be in reference to the New Mexico Principal Meridian. If the land is not surveyed, contact the OCD Engineering Bureau. Independent subdivision surveys will not be accepted.



LEGEND

	SECTION LINE		330' BUFFER		PPP
	TOWNSHIP LINE		MINERAL LEASE		WELL
	DEDICATED ACREAGE		WELL BORE		

WELL COORDINATE TABLE								
WELL	NAD 83 NME X	NAD 83 NME Y	NAD 83 LAT	NAD 83 LON	NAD 27 NME X	NAD 27 NME Y	NAD 27 LAT	NAD 27 LON
SHL	667,694.0	410,285.6	32.127296	-103.925153	626,509.5	410,227.1	32.127171	-103.924668
KOP	666,763.1	410,036.2	32.126620	-103.928163	625,578.5	409,977.6	32.126495	-103.927678
FTP	666,576.2	411,413.7	32.130409	-103.928750	625,391.7	411,355.1	32.130284	-103.928265
LTP	666,669.6	419,183.8	32.151767	-103.928354	625,485.3	419,125.1	32.151642	-103.927868
BHL	666,669.1	419,273.8	32.152014	-103.928354	625,484.8	419,215.1	32.151889	-103.927868
PPP1	666,565.4	411,313.6	32.130134	-103.928786	625,380.9	411,255.1	32.130009	-103.928301
PPP2	666,692.9	413,974.6	32.137447	-103.928342	625,508.4	413,916.0	32.137322	-103.927856

CORNER COORDINATE TABLE				
CORNER	NAD 83 NME X	NAD 83 NME Y	NAD 27 NME X	NAD 27 NME Y
A	666,372.8	411,312.7	625,188.3	411,254.2
B	666,357.8	413,973.3	625,173.4	413,914.7
C	666,348.2	416,635.7	625,163.9	416,577.0
D	666,334.0	419,282.2	625,149.8	419,223.4
E	669,062.3	411,325.1	627,877.7	411,266.5
F	669,047.2	413,983.4	627,862.8	413,924.8
G	669,037.3	416,642.9	627,852.9	416,584.2
H	669,027.3	419,295.1	627,843.0	419,236.4

Santa Fe Main Office Phone: (505) 476-3441 General Information Phone: (505) 629-6116 Online Phone Directory Visit: https://www.emnrd.nm.gov/ocd/contact-us/	State of New Mexico Energy, Minerals & Natural Resources Department OIL CONVERSION DIVISION	C-102 Revised July, 09 2024 Submit Electronically via OCD permitting	
		Submittal Type:	<input type="checkbox"/> Initial Submittal
			<input checked="" type="checkbox"/> Amended Report
		<input type="checkbox"/> As Drilled	

WELL LOCATION INFORMATION

API Number 30-015-	Pool Code 13354	Pool Name CORRAL CANYON; BONE SPRING, SOUTH
Property Code	Property Name MUY WAYNO 18-7 FED COM	Well Number 402H
OGRID No. 373075	Operator Name XTO PERMIAN OPERATING, LLC.	Ground Level Elevation 3,166'
Surface Owner: <input type="checkbox"/> State <input type="checkbox"/> Fee <input type="checkbox"/> Tribal <input checked="" type="checkbox"/> Federal		Mineral Owner: <input type="checkbox"/> State <input type="checkbox"/> Fee <input type="checkbox"/> Tribal <input checked="" type="checkbox"/> Federal

Surface Hole Location

UL	Section 18	Township 25S	Range 30E	Lot 3	Ft. from N/S 1,626 FSL	Ft. from E/W 1,345 FWL	Latitude 32.127296	Longitude -103.925056	County EDDY
----	----------------------	------------------------	---------------------	-----------------	----------------------------------	----------------------------------	------------------------------	---------------------------------	-----------------------

Bottom Hole Location

UL	Section 7	Township 25S	Range 30E	Lot 1	Ft. from N/S 10 FNL	Ft. from E/W 1,344 FWL	Latitude 32.152017	Longitude -103.925107	County EDDY
----	---------------------	------------------------	---------------------	-----------------	-------------------------------	----------------------------------	------------------------------	---------------------------------	-----------------------

Dedicated Acres 483.44	Infill or Defining Well DEFINING	Defining Well API	Overlapping Spacing Unit (Y/N) N	Consolidation Code C
Order Numbers.			Well Setbacks are under Common Ownership: <input type="checkbox"/> Yes <input checked="" type="checkbox"/> No	

Kick Off Point (KOP)

UL	Section 18	Township 25S	Range 30E	Lot 3	Ft. from N/S 2,077 FSL	Ft. from E/W 1,316 FWL	Latitude 32.128536	Longitude -103.925152	County EDDY
----	----------------------	------------------------	---------------------	-----------------	----------------------------------	----------------------------------	------------------------------	---------------------------------	-----------------------

First Take Point (FTP)

UL	Section 18	Township 25S	Range 30E	Lot 2	Ft. from N/S 2,560 FNL	Ft. from E/W 1,186 FWL	Latitude 32.130411	Longitude -103.925577	County EDDY
----	----------------------	------------------------	---------------------	-----------------	----------------------------------	----------------------------------	------------------------------	---------------------------------	-----------------------

Last Take Point (LTP)

UL	Section 7	Township 25S	Range 30E	Lot 1	Ft. from N/S 100 FNL	Ft. from E/W 1,344 FWL	Latitude 32.151769	Longitude -103.925106	County EDDY
----	---------------------	------------------------	---------------------	-----------------	--------------------------------	----------------------------------	------------------------------	---------------------------------	-----------------------

Unitized Area or Area of Interest	Spacing Unit Type : <input checked="" type="checkbox"/> Horizontal <input type="checkbox"/> Vertical	Ground Elevation 3,166'
-----------------------------------	--	-----------------------------------

<p>OPERATOR CERTIFICATIONS</p> <p><i>I hereby certify that the information contained herein is true and complete to the best of my knowledge and belief, and, if the well is vertical or directional well, that this organization either owns a working interest or unleased mineral interest in the land including the proposed bottom hole location or has a right to drill this at this location pursuant to a contract with an owner of a working interest or unleased mineral interest, or a voluntary pooling agreement or a compulsory pooling order of heretofore entered by the division.</i></p> <p><i>If this well is a horizontal well, I further certify that this organization has received the consent of at least one lessee or owner of a working interest or unleased mineral interest in each tract (in the target pool or information) in which any part of the well's completed interval will be located or obtained a compulsory pooling order from the division.</i></p> <div>Signature _____ Date _____</div> <div>Printed Name _____</div> <div>Email Address _____</div>	<p>SURVEYOR CERTIFICATIONS</p> <p><i>I hereby certify that the well location shown on this plat was plotted from field notes of actual surveys made by me or under my supervision, and that the same is true and correct to the best of my belief</i></p> <p>PRELIMINARY, THIS DOCUMENT SHALL NOT BE RECORDED FOR ANY PURPOSE AND SHALL NOT BE USED OR VIEWED OR RELIED UPON AS A FINAL SURVEY DOCUMENT</p> <div>Signature and Seal of Professional Surveyor _____</div> <div>MARK DILLON HARP 23786 Certificate Number _____ Date of Survey _____</div> <div>YH 618.013001.00-03</div>
--	---

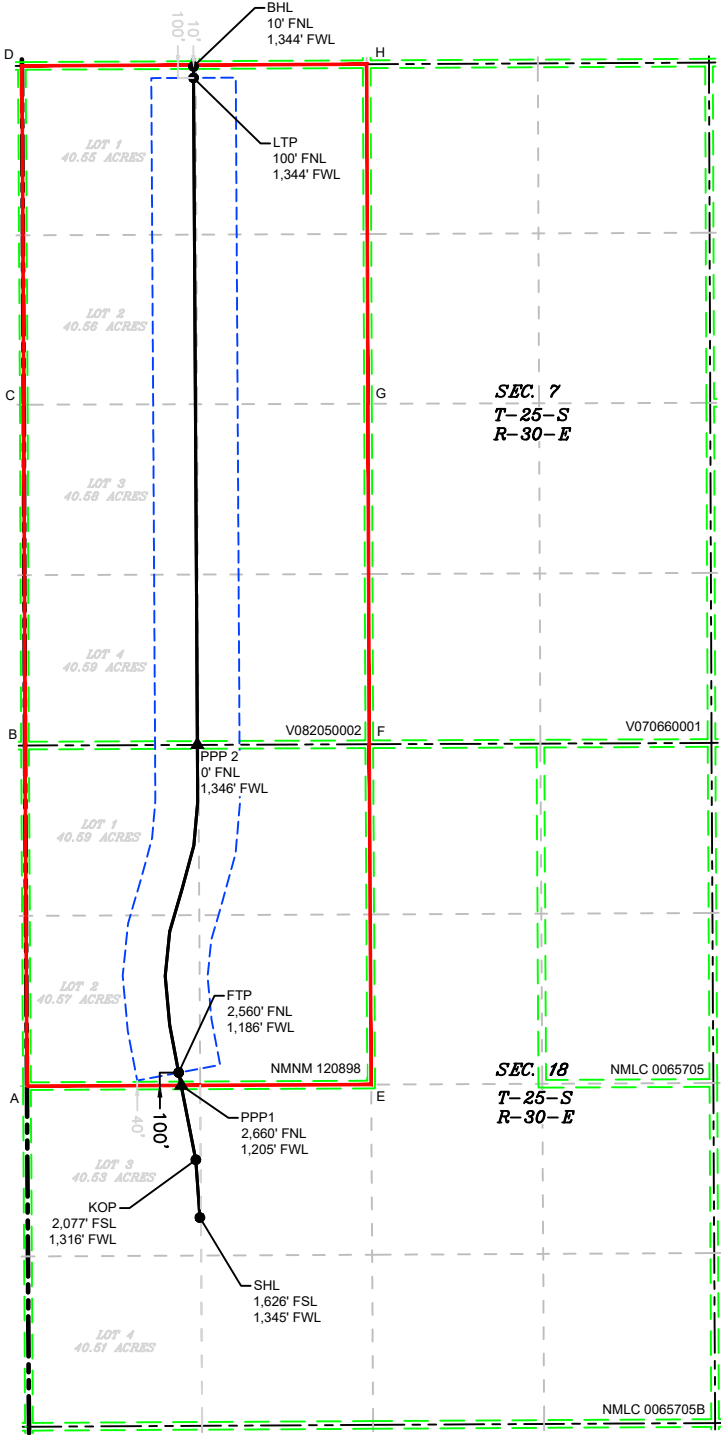
Note: No allowable will be assigned to this completion until all interest have been consolidated or a non-standard unit has been approved by the division.

P:\618.013 XTO Energy - NM\001 Muy Wayno 18 - Eddy\00 - Muy Wayno 18\Wells\03 - 402H\DWG\402H C-102.dwg

ACREAGE DEDICATION PLATS

This grid represents a standard section. You may superimpose a non-standard section, or larger area, over this grid. Operators must outline the dedicated areage in a red box, clearly show the well surface location and bottom hole location, if it is directionally drilled, with the dimensions from the section lines in the cardinal directions. If this is a horizontal wellbore show on this plat the location of the First Take Point and Last Take Point, and the point within the completed interval (other than the First Take Point or Last Take Point) that is closest to any outer boundary of the tract.

Surveyors shall use the latest United States government survey or dependent resurvey. Well Locations will be in reference to the New Mexico Principal Meridian. If the land is not surveyed, contact the OCD Engineering Bureau. Independent subdivision surveys will not be accepted.



LEGEND

- SECTION LINE
-
- TOWNSHIP LINE

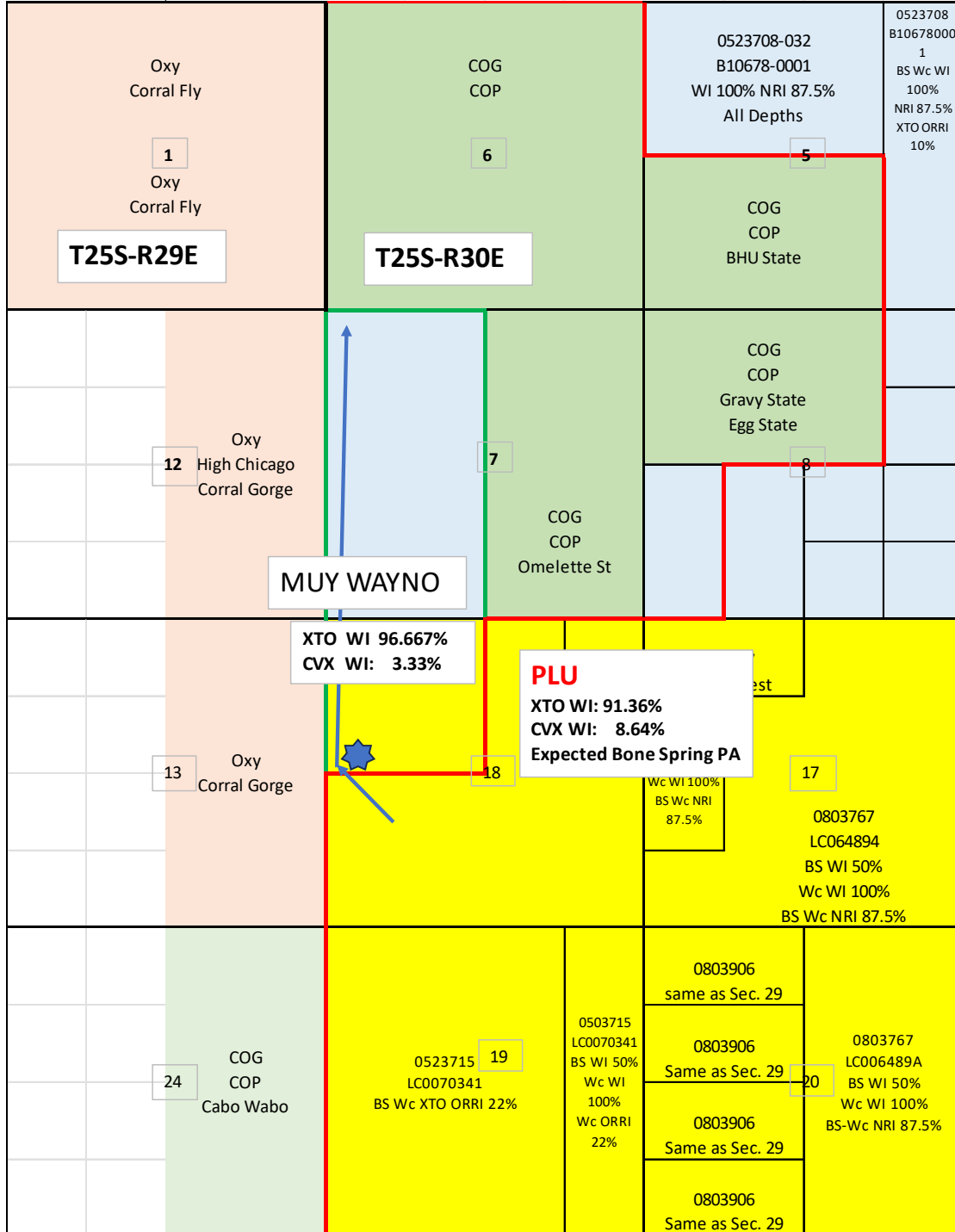
WELL COORDINATE TABLE								
WELL	NAD 83 NME X	NAD 83 NME Y	NAD 83 LAT	NAD 83 LON	NAD 27 NME X	NAD 27 NME Y	NAD 27 LAT	NAD 27 LON
SHL	667,724.0	410,285.7	32.127296	-103.925056	626,539.5	410,227.2	32.127171	-103.924571
KOP	667,692.5	410,736.8	32.128536	-103.925152	626,508.0	410,678.3	32.128412	-103.924667
FTP	667,558.2	411,418.2	32.130411	-103.925577	626,373.7	411,359.6	32.130286	-103.925092
LTP	667,674.6	419,188.6	32.151769	-103.925106	626,490.3	419,129.8	32.151645	-103.924621
BHL	667,674.1	419,278.6	32.152017	-103.925107	626,489.8	419,219.8	32.151892	-103.924621
PPP1	667,577.9	411,318.3	32.130136	-103.925515	626,393.4	411,259.7	32.130011	-103.925030
PPP2	667,703.8	413,978.3	32.137447	-103.925076	626,519.3	413,919.7	32.137322	-103.924591

CORNER COORDINATE TABLE				
CORNER	NAD 83 NME X	NAD 83 NME Y	NAD 27 NME X	NAD 27 NME Y
A	666,372.8	411,312.7	625,188.3	411,254.2
B	666,357.8	413,973.3	625,173.4	413,914.7
C	666,348.2	416,635.7	625,163.9	416,577.0
D	666,334.0	419,282.2	625,149.8	419,223.4
E	669,062.3	411,325.1	627,877.7	411,266.5
F	669,047.2	413,983.4	627,862.8	413,924.8
G	669,037.3	416,642.9	627,852.9	416,584.2
H	669,027.3	419,295.1	627,843.0	419,236.4

D:\618.013 XTO Energy - NM\001 Muy Wayno 18 - Eddy\00 - Muy Wayno 18\Wells\03 - 402H\DWG\402H C-102.dwg

B

Non-Standard Location
Muy Wayno 18-7 Fed Com #401H
Township 25 South – Range 30 East
Spacing Area: W/2 Sec. 7 & NW/4 Sec. 18
Eddy County, New Mexico



C

Bureau of Land Management	620 E Greene St.	Carlsbad	NM	88220
Bureau of Land Management	301 Dinosaur Trail	Santa Fe	NM	87508
Oxy USA Inc., c/o Jonathan Gonzales	5 Greenway Plaza, Suite 110	Houston	TX	77046-0521



Paula M. Vance
Associate
Phone (505) 954-7286
PMVance@hollandhart.com

September 5, 2025

VIA CERTIFIED MAIL
RETURN RECEIPT REQUESTED

TO: ALL AFFECTED PERSONS

Re: XTO Permian, LLC
Request for Administrative Approval of Unorthodox Well Location

Muy Wayno 18-7 Federal Com 401H well
Lots 1-4 and the E/2 W/2 (W/2 equivalent) of irregular Section 7, and Lots 1-2 and the E/2
NW/4 (NW/4 equivalent) of irregular Section 18, Township 25 South, Range 30 East
Eddy County, New Mexico
Corral Canyon, Bone Spring, South [Pool 13354]
API No. 30-015-57092

Ladies and Gentlemen:

Enclosed is a copy of the above-referenced application which was filed with the New Mexico Oil Conservation Division on this date. Any objection to this application must be filed in writing within twenty days from this date with the applicant and the New Mexico Oil Conservation Division, 1220 South St. Francis Drive, Santa Fe, New Mexico, 87505. If no objection is received within this twenty-day period, this application may be approved administratively by the Division.

If you have any questions about this application, please contact the following:

Dustin A. Nuche
ExxonMobil
Office: (346) 502-0751
dustin.nuche@exxonmobil.com

Sincerely,

A handwritten signature in blue ink, appearing to read "Paula M. Vance".

Paula M. Vance
ATTORNEY FOR XTO PERMIAN, LLC

XTO - Muy Wayno 18-7 Fed Com #401H well - NSL
Postal Delivery Report

9414811898765474042093	Bureau of Land Management	620 E Greene St	Carlsbad	NM	88220-6292	Your item was delivered to an individual at the address at 11:51 am on September 12, 2025 in CARLSBAD, NM 88220.
9414811898765474042048	Bureau of Land Management	301 Dinosaur Trl	Santa Fe	NM	87508-1560	Your item was delivered to the front desk, reception area, or mail room at 12:36 pm on September 8, 2025 in SANTA FE, NM 87508.
9414811898765474042086	Oxy USA Inc., c/o Jonathan Gonzales	5 Greenway Plz Ste 110	Houston	TX	77046-0521	Your item has been delivered to an agent at the front desk, reception, or mail room at 11:09 am on September 12, 2025 in HOUSTON, TX 77046.

Sante Fe Main Office
Phone: (505) 476-3441

General Information
Phone: (505) 629-6116

Online Phone Directory
<https://www.emnrd.nm.gov/ocd/contact-us>

State of New Mexico
Energy, Minerals and Natural Resources
Oil Conservation Division
1220 S. St Francis Dr.
Santa Fe, NM 87505

CONDITIONS

Action 506007

CONDITIONS

Operator: XTO PERMIAN OPERATING LLC. 6401 HOLIDAY HILL ROAD MIDLAND, TX 79707	OGRID: 373075
	Action Number: 506007
	Action Type: [UF-NSL] Non-Standard Location (NSL)

CONDITIONS

Created By	Condition	Condition Date
llowe	None	9/25/2025