

San Mateo Midstream  
03/24/2026

## San Mateo Midstream H2S Contingency Plan with Appendix of Radius of Exposure Site Maps

**Purpose and Scope:** This written Hydrogen Sulfide (H2S) Contingency Plan (the Plan) has been prepared for San Mateo Midstream and its subsidiaries (San Mateo) to outline procedures that will alert and protect personnel and the public in the event an H2S release occurs. This plan is to be followed in the event of a release of a potentially hazardous volume of H2S on a San Mateo operated location.

### **Requirements for work at facilities with high volumes of H2S:**

Prior to beginning work on a San Mateo location with high volumes of H2S, all workers must:

- Review and follow San Mateo's standard Contractor and Visitor Orientation Guidelines.
- Be trained in the characteristics and risks of H2S and response to a release of H2S.
- Use necessary personal protection equipment, including wearing a personal H2S monitor. Third-party contractors are responsible for providing their own PPE and monitors.
- Identify evacuation routes, muster areas, and the radius of exposure for the relevant location.

### **Immediate Action Plan for a release of H2S:**

Any release of H2S (a) **in excess of 10 ppm** or (b) that **triggers any H2S monitor alarm**, shall be deemed potentially hazardous. Upon detecting a release of H2S, all personnel should immediately (1) move upwind and crosswind of the release, (2) instruct other workers to avoid the affected area, and (3) determine whether additional precautionary/remedial steps are necessary.

For any release of H2S reasonably believed to be **in excess of 100 ppm**, take the following steps:

- **Move upwind and crosswind** of the release; proceed to a safe muster area upwind of the release.
- **Restrict access** to the affected area.
- Conduct a **personnel count** to ensure all individuals are accounted for.
- **Notify** a San Mateo supervisor of the release and request assistance.
- If it can be accomplished safely, **shut in** the facility or any affected equipment as appropriate.
- If properly trained personnel are on location and it can be accomplished safely, **evacuate** any injured personnel within the affected area to a safe location and administer **first aid**.
- Contact appropriate **emergency response** agencies (call 911, or use contact numbers below) as necessary.

San Mateo Midstream  
03/24/2026

- Request and direct **additional equipment or assistance** as needed from contractors specifically trained and equipped to operate in high H<sub>2</sub>S environments.
- **Assess** the need for roadblocks, public notice and evacuation, or downwind monitoring of H<sub>2</sub>S levels by utilizing the Radius of Exposure (ROE) maps in the Appendix below.
- Cooperate with emergency responders to **alert and evacuate** public areas or other facilities within the ROE area as appropriate.

**Events that could lead to a release of H<sub>2</sub>S:**

- Failure of piping systems
- Failure of pressure-relieving equipment (for example: hatches, PRVs, valves)
- Failure of flare apparatus
- Planned depressurization by qualified individual

**Characteristics of Hydrogen Sulfide and Sulfur Dioxide:**

Hydrogen Sulfide (H<sub>2</sub>S):

- Hydrogen Sulfide is a colorless, transparent, flammable gas. It is heavier than air and therefore may accumulate in low places.
- Although the presence of H<sub>2</sub>S in the air is normally detectable by its characteristic “rotten egg” odor, it is dangerous to rely on the odor as a means of detecting excessive concentrations, because the sense of smell is rapidly lost, allowing higher concentrations to be accumulated without warning.

Sulfur Dioxide (SO<sub>2</sub>):

- Sulfur Dioxide is a colorless, non-flammable, transparent gas. SO<sub>2</sub> is produced during the burning of gas containing H<sub>2</sub>S.
- Although SO<sub>2</sub> is heavier than air, it can be picked up by a breeze and carried downwind at elevated temperatures.
- SO<sub>2</sub> is extremely irritating to the eyes and mucous membranes of the upper respiratory tract.

**Training and Drills:**

- Prior to performing work on a San Mateo facility with potentially high volumes of H<sub>2</sub>S, all workers must be trained on the characteristics and risks of H<sub>2</sub>S, the proper use of relevant personal protection equipment, and how to respond in the event of a release of H<sub>2</sub>S.
- Training for San Mateo employees may be accomplished by San Mateo safety department employees or by third parties.
- For independent contractors, each contractor is primarily responsible for ensuring that its workers are properly trained and equipped prior to entering a San Mateo facility.

San Mateo Midstream  
03/24/2026

- Training shall include the response procedures set forth above in this Contingency Plan, general information about toxic gases (including H<sub>2</sub>S and SO<sub>2</sub>), and the physiological effects of H<sub>2</sub>S.
- Emergency drills will be held periodically to review workers' responsibilities, proper evacuation procedures, processes for securing the impacted facility and surrounding areas, and plans for communication with state and local authorities.
- Pre-job safety meetings shall identify what piping or equipment may contain high levels of H<sub>2</sub>S, the location of H<sub>2</sub>S monitors, portable fire extinguishers, windsocks, evacuation routes, and muster areas.
- San Mateo safety department shall document annual employee H<sub>2</sub>S awareness level training.

### **NMOCD Notification:**

If the Immediate Action Plan is activated in New Mexico, the San Mateo EHS department shall notify the Oil Conservation Division of the NMED (NMOCD) as soon as possible, and no later than 4 hours after plan activation. Within 15 days of the activation, the EHS department shall submit a full report to the NMOCD on form C-141.

### **Requirements for well sites, compressor stations, production tank batteries, gas processing plants, and other permanent facilities with H<sub>2</sub>S concentrations of 100 ppm or greater:**

- Locations within ¼ mile from public areas shall be fenced with locked gates.
- For fenced locations, designate two or more muster areas that are accessible through gates located upwind of the prevailing winds at each facility.
- Emergency shutdown devices and well control equipment shall be present to shut in the well or facility as needed.
- Windsocks or streamers will be placed in easy view from the ground throughout the facility. Multiple wind indicators may be used as needed.
- Warning signs will be posted on the location perimeters stating that "poison gas" may be present.
- Stairs or ladders leading to the top of a tank or vessel containing 100 ppm or more of H<sub>2</sub>S shall be chained with warning signs.
- Personal H<sub>2</sub>S monitors must be worn by all employees and contractors to warn of H<sub>2</sub>S presence of 10 ppm or higher.
- Fixed H<sub>2</sub>S monitors and visual strobe lights with audible alarms will be installed at all locations to be triggered at any detection of H<sub>2</sub>S over 10 ppm.

San Mateo Midstream  
03/24/2026

### **EMERGENCY PHONE NUMBERS**

San Mateo Midstream Emergency Phone Number: 972-371-5400

| <b>Title</b>                                       | <b>Names</b>   | <b>Cell</b>  |
|--|----------------|--------------|
| Director of Field Operations                       | Thomas Green   | 575-361-2204 |
| Superintendent – Gas Field Ops                     | David Sedillo  | 575-706-5784 |
| Field Supervisor - Environmental Health and Safety | Arsenio Jones  | 575-361-4333 |
| SVP - Environmental Health and Safety              | Casey Snow     | 817-694-2136 |
| SVP of Operations – Midstream                      | Justin Hosp    | 903-651-1968 |
| VP of Gas Operations                               | Ryan Hernandez | 817-374-9992 |

### **State Police (911)**

|  |                      |                     |
|--|----------------------|---------------------|
| <b>New Mexico State Police<br/>3300 W. Main St<br/>Artesia, NM</b>           | <b>Office Number</b> | <b>575-748-9718</b> |
| <b>New Mexico State Police<br/>304 N. Canyon St<br/>Carlsbad, NM 88220</b>   | <b>Office Number</b> | <b>575-885-3137</b> |
| <b>New Mexico State Police<br/>5100 Jack Gomez Blvd.<br/>Hobbs, NM 88240</b> | <b>Office Number</b> | <b>575-392-5588</b> |

### **Local Law Enforcement (911) (Sheriff)**

|   |                      |                     |
|---|----------------------|---------------------|
| <b>Lea Co. Sheriff<br/>1417 S. Commercial St.<br/>Lovington, NM 88260</b> | <b>Office Number</b> | <b>575-396-3611</b> |
| <b>Eddy Co. Sheriff 1502<br/>Corrales Dr.<br/>Carlsbad, NM 88220</b>      | <b>Office Number</b> | <b>575-877-7551</b> |

San Mateo Midstream  
03/24/2026**Federal & State Agencies**

|  |                    |                     |
|--|--------------------|---------------------|
| <b>OSHA Lubbock Area Office<br/>1205 Texas Av. Room 806<br/>Lubbock, Texas 79401</b>         | <b>Main Number</b> | <b>806-472-7681</b> |
| <b>New Mexico Environment<br/>Department<br/>1190 St. Francis Dr.<br/>Santa Fe, NM 87505</b> | <b>Main Number</b> | <b>505-827-2855</b> |
| <b>BLM Carlsbad, NM Field<br/>Office<br/>620 E. Green ST<br/>Carlsbad, NM 88220</b>          | <b>Main Number</b> | <b>575-234-5972</b> |
| <b>BLM Hobbs Field Station<br/>414 W. Taylor Rd.<br/>Hobbs, NM 88240</b>                     | <b>Main Number</b> | <b>575-393-3612</b> |
| <b>BLM Roswell District Office<br/>2909 W. Second St.<br/>Roswell, NM 88201</b>              | <b>Main Number</b> | <b>575-627-0272</b> |
| <b>New Mexico OCD<br/>1220 S St. Francis Dr.<br/>Santa Fe, NM 87505</b>                      | <b>Main Number</b> | <b>505-476-3441</b> |
| <b>U.S. Environmental<br/>Protection Agency Region 6<br/>Texas/New Mexico</b>                | <b>Main Number</b> | <b>214-655-2760</b> |
| <b>National Response Center<br/>Toxic Chemicals &amp; Oil Spills</b>                         | <b>Main Number</b> | <b>800-424-8802</b> |

San Mateo Midstream  
03/24/2026**Hospitals (911)**

|   |                          |                     |
|---|--------------------------|---------------------|
| <b>Artesia General Hospital<br/>702 N. 13<sup>th</sup> St.<br/>Artesia, NM 88210</b>  | <b>Main Phone Number</b> | <b>575-748-3333</b> |
| <b>Nor-Lea General Hospital<br/>1600 N. Main Ave.<br/>Lovington, NM 88260</b>         | <b>Main Phone Number</b> | <b>575-396-6611</b> |
| <b>Lea Regional Medical Center<br/>5419 N. Lovington Hwy<br/>Hobbs, NM 88240</b>      | <b>Main Phone Number</b> | <b>575-492-5000</b> |
| <b>Carlsbad General Hospital<br/>2430 W. Pierce St.<br/>Carlsbad, NM</b>              | <b>Main Phone Number</b> | <b>575-887-4100</b> |
| <b>Lovelace Regional Hospital<br/>117 E. 19<sup>th</sup> St<br/>Roswell, NM 88201</b> | <b>Main Phone Number</b> | <b>575-627-7000</b> |
| <b>Winkler Co. Memorial<br/>Hospital<br/>821 Jeffee Dr.<br/>Kermit, Texas 79745</b>   | <b>Main Phone Number</b> | <b>432-586-8299</b> |
| <b>Reeves County Hospital 2349<br/>Medical Dr.<br/>Pecos, Texas 79772</b>             | <b>Main Phone Number</b> | <b>432-447-3551</b> |

San Mateo Midstream  
03/24/2026

## **RADIUS OF EXPOSURE CALCULATIONS**

The H2S Contingency Plan is applicable to locations with a potentially hazardous volumes of hydrogen sulfide gas, defined as:

1. 100 ppm if the radius of exposure includes a dwelling, office, place of business, church, school, hospital or government building, or a portion of a park, city, town, village or school bus stop or other similar area where members of the public may reasonably be expected to be present (defined as “public areas”); or
2. 500 ppm if the radius of exposure includes a public road; or
3. 100 ppm if the radius of exposure extends 3,000 feet from the site of release.

The radius of exposure, shown in the attached location maps, is calculated by the Pasquill-Gifford equation (eq 1,2):

$$x_{100} = [(1.589) * (\text{mole fraction } H_2S) * (Q)]^{0.6258} \quad (1)$$

$$x_{500} = [(0.4546) * (\text{mole fraction } H_2S) * (Q)]^{0.6258} \quad (2)$$

Where x = radius of exposure in feet

Q = maximum volume determined to be available for escape in standard cubic feet per day

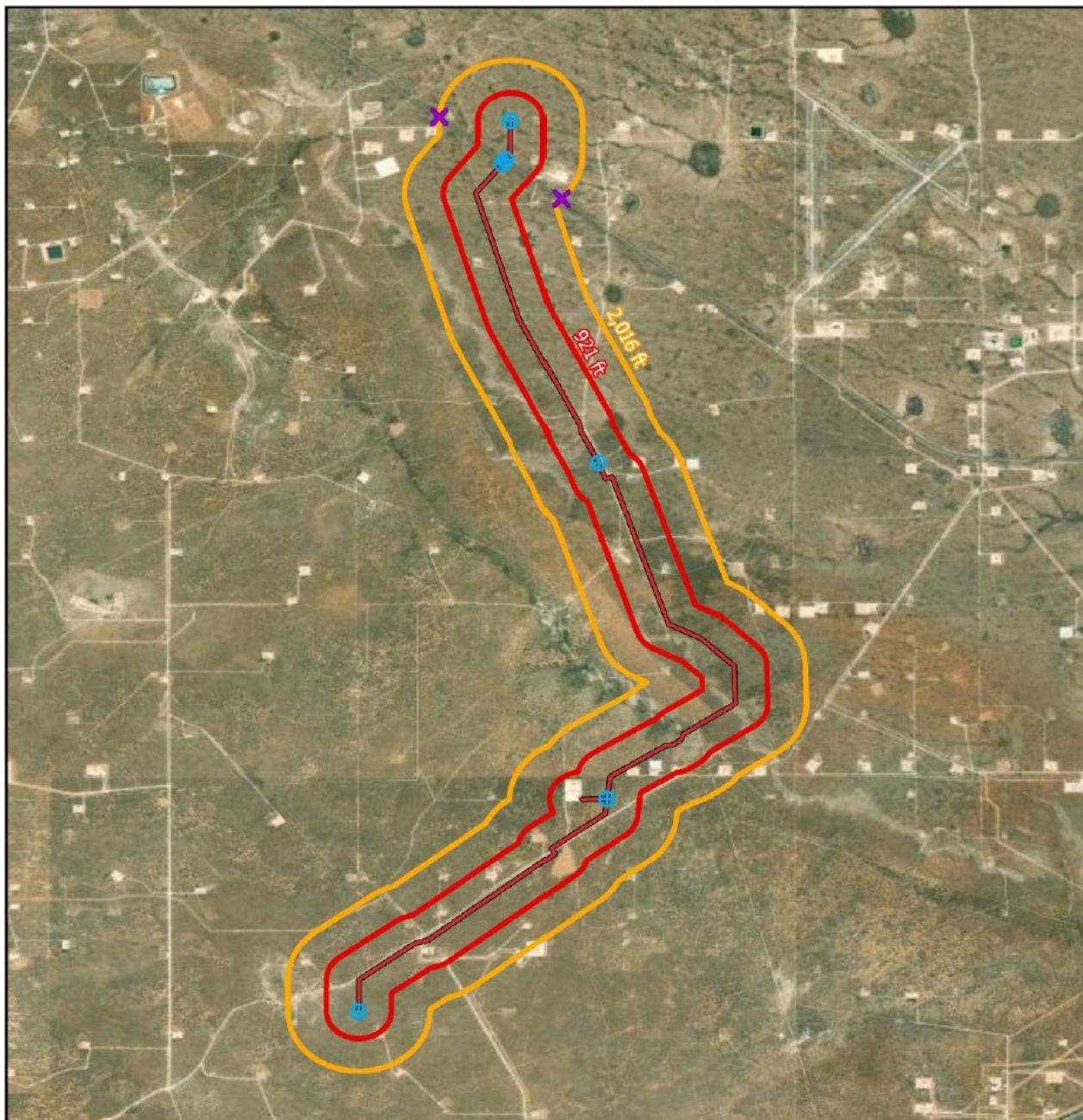
## **Submission of Plan to NMOCD**








1. Where submitted. The person shall submit the hydrogen sulfide contingency plan to the division.
2. When submitted. The person shall submit a hydrogen sulfide contingency plan for a new well, facility or operation before operations commence. A person shall submit a hydrogen sulfide contingency plan within 180 days after the person becomes aware or should have become aware that a public area or public road is established that creates a potentially hazardous volume where none previously existed.
3. Electronic submission. A filer who operates more than 100 wells or who operates an oil pump station, compressor station, refinery or gas plant shall submit each hydrogen sulfide contingency plan in electronic format. The filer may submit the hydrogen sulfide contingency plan through electronic mail, through an Internet filing or by delivering electronic media to the division, so long as the electronic submission is compatible with the division’s systems.

## **Updating Provisions**

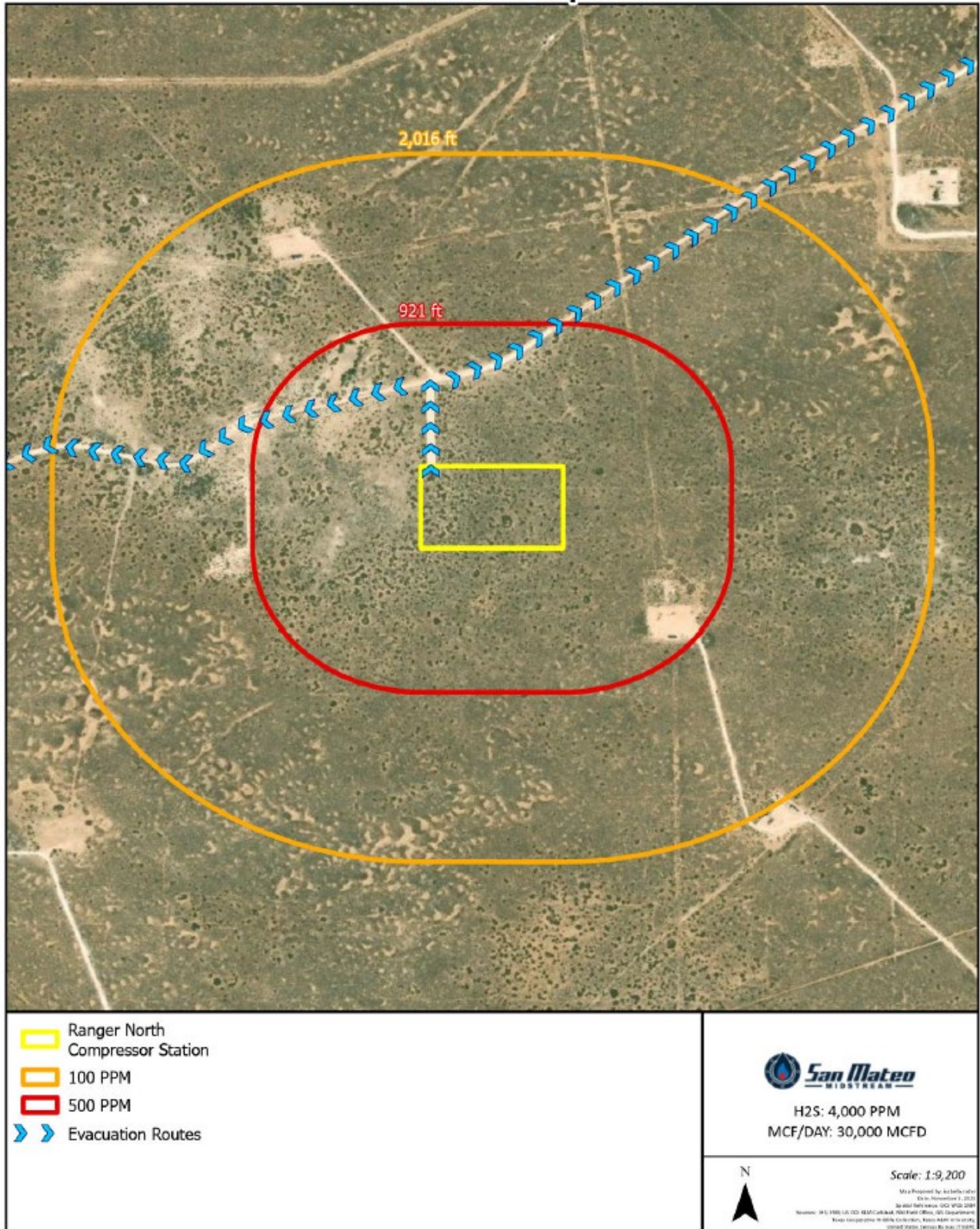
This plan shall be periodically reviewed and updated any time its provisions or coverage changes.

### H2S Radius of Exposure

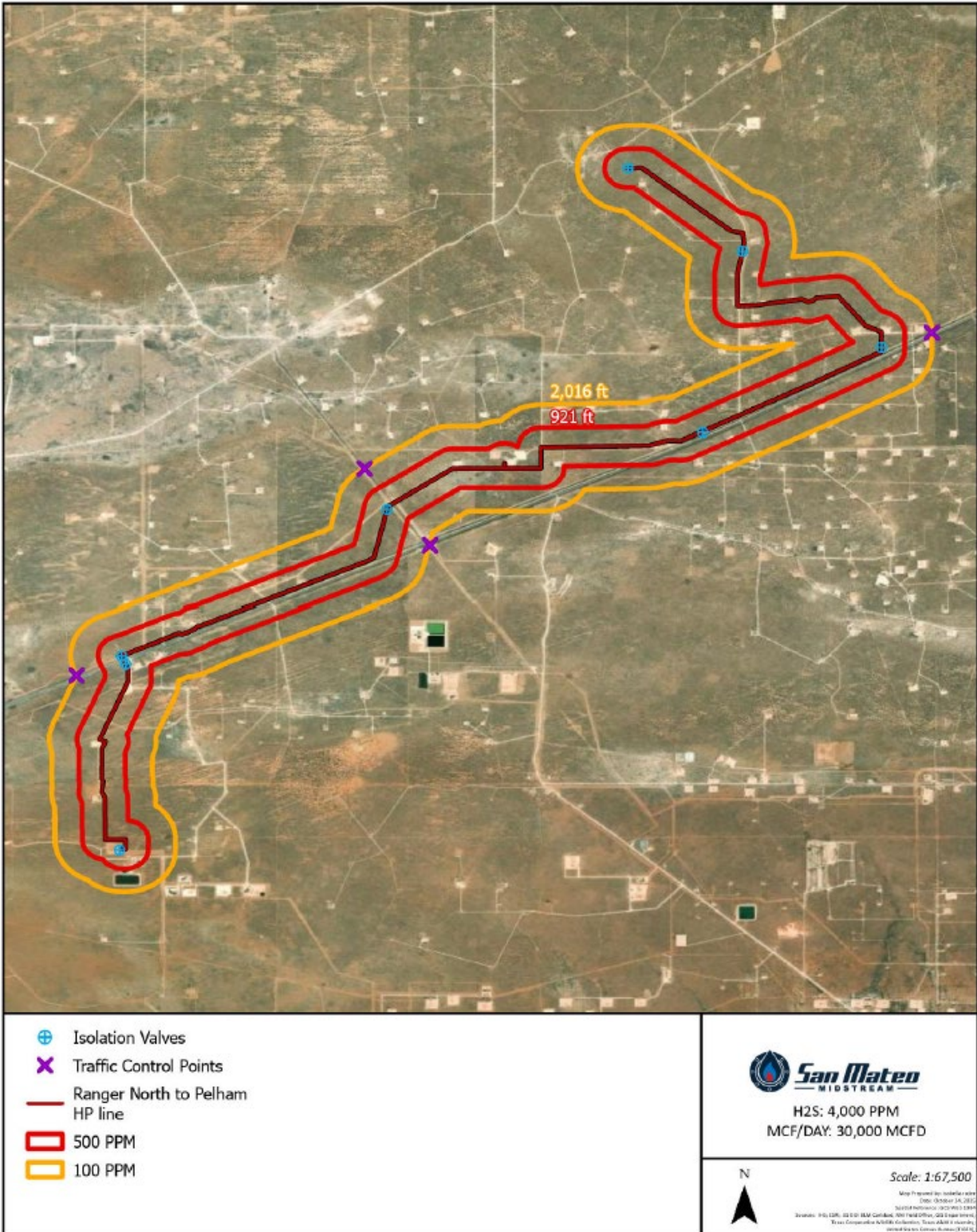


|  |  |   |
|--|--|---|
| <ul style="list-style-type: none"> <li> Isolation Valves</li> <li> Traffic Control Points</li> <li> Iggles LP Trunk Line</li> <li> 500 PPM</li> <li> 100 PPM</li> </ul> |  <p>H2S: 4,000 PPM<br/>MCF/DAY: 30,000 MCFD</p> | <p>Scale: 1:53,000</p> <p>Map Prepared By: iudell@cedar<br/>Date: October 18, 2014<br/>System Reference: GCS_NAD_1983</p> <p>Source: FGS CAD; US DCG EBN Curator; WRI Field Office; GIS Department<br/>Data: Copyright 2014 Esri, Inc. All Rights Reserved.<br/>San Mateo Midstream License Renewal 2/15/14</p> |
|  |  |    |

### H<sub>2</sub>S Radius of Exposure



### H2S Radius of Exposure





*San Mateo Midstream  
03/24/2026*

**THIS PAGE IS INTENTIONALLY LEFT BLANK  
END OF SECTION**

State of New Mexico  
Energy, Minerals and Natural Resources Department

---

**Michelle Lujan-Grisham**  
Governor

**Erin Taylor**  
Acting Cabinet Secretary

**Ben Shelton**  
Deputy Secretary

**Albert C.S. Chang**  
Division Director  
Oil Conservation Division



**BY ELECTRONIC MAIL**

April 3, 2026

Trisha Inurriagarro  
5400 LBJ Freeway  
Suite 1500  
Dallas, TX 75240  
[tinurriagarro@sanmateomidstream.com](mailto:tinurriagarro@sanmateomidstream.com)

**RE: Notice of an Administratively Complete Hydrogen Sulfide Contingency Plan, San Mateo Midstream, Pronto Gas Gathering System, Lea and Eddy Counties, New Mexico**

Dear Ms. Inurriagarro,

The New Mexico Energy, Minerals and Natural Resource Department's Oil Conservation Division (OCD) has reviewed the Hydrogen Sulfide (H<sub>2</sub>S) Contingency Plan submitted to the OCD on March 24, 2026, by San Mateo Midstream, LLC (San Mateo), OGRID 331527, for the Pronto Gas Gathering System (Facility ID fAPP2304039201) located in Lea and Eddy Counties, New Mexico. The submitted H<sub>2</sub>S Contingency Plan includes all content components as required by 19.15.11 NMAC; therefore, the OCD has determined that the submitted H<sub>2</sub>S Contingency Plan is administratively complete.

Please be advised that OCD's acceptance of this plan does not relieve San Mateo of responsibility should its operations fail to adequately detect, investigate, and/or undertake corrective actions to prevent or stop a hydrogen sulfide release. In addition, OCD's acceptance does not relieve San Mateo of responsibility for compliance with any other federal, state, or local laws and/or regulations.

Please do not hesitate to contact me at (505) 709-5149 or via email should you have any questions.

Respectfully,

Joel Stone  
Senior Environmental Scientist  
[joel.stone@emnrd.nm.gov](mailto:joel.stone@emnrd.nm.gov)

Sante Fe Main Office  
Phone: (505) 476-3441

General Information  
Phone: (505) 629-6116

Online Phone Directory  
<https://www.emnrd.nm.gov/ocd/contact-us>

**State of New Mexico**  
**Energy, Minerals and Natural Resources**  
**Oil Conservation Division**  
**1220 S. St Francis Dr.**  
**Santa Fe, NM 87505**

CONDITIONS

Action 565936

**CONDITIONS**

|  |  |
|--|--|
| Operator:<br>Pronto Midstream, LLC<br>5400 LBJ Freeway<br>Dallas, TX 75240 | OGRID:<br>331527   |
|  | Action Number:<br>565936                                 |
|  | Action Type:<br>[UF-H2S] H2S Contingency Plan (H2S Plan) |

**CONDITIONS**

| Created By | Condition  | Condition Date |
|------------|--|----------------|
| joel.stone | See attached letter to operator, sent on 04/03/2026. | 4/3/2026       |