

Office
District I - (575) 393-6161
1625 N. French Dr., Hobbs, NM 88240
District II - (575) 748-1283
811 S. First St., Artesia, NM 88210
District III - (505) 334-6178
1000 Rio Brazos Rd., Aztec, NM 87410
District IV - (505) 476-3460
1220 S. St. Francis Dr., Santa Fe, NM 87505

State of New Mexico
Energy, Minerals and Natural Resources

OIL CONSERVATION DIVISION
1220 South St. Francis Dr.
Santa Fe, NM 87505

Revised July 18, 2013

WELL API NO. 30-045-38519
5. Indicate Type of Lease STATE [] FEE [x]
6. State Oil & Gas Lease No.
7. Lease Name or Unit Agreement Name Rhoda Abrams
8. Well Number 2P
9. OGRID Number 372171
10. Pool name or Wildcat Blanco Mesaverde / Basin Dakota
4. Well Location Unit Letter J: 1539 feet from the South line and 1823 feet from the East line
Section 5 Township 030N Range 011W NMPM County SAN JUAN
11. Elevation (Show whether DR, RKB, RT, GR, etc.) 5673' GL
ID NO. 543660

12. Check Appropriate Box to Indicate Nature of Notice, Report or Other Data

NOTICE OF INTENTION TO:
PERFORM REMEDIAL WORK [] PLUG AND ABANDON []
TEMPORARILY ABANDON [] CHANGE PLANS []
PULL OR ALTER CASING [] MULTIPLE COMPL []
DOWNHOLE COMMINGLE [x]
CLOSED-LOOP SYSTEM []
OTHER: [] SIDETRACK []
SUBSEQUENT REPORT OF:
REMEDIAL WORK [] ALTERING CASING []
COMMENCE DRILLING OPNS. [] P AND A []
CASING/CEMENT JOB []
OTHER: []

13. Describe proposed or completed operations. (Clearly state all pertinent details, and give pertinent dates, including estimated date of starting any proposed work). SEE RULE 19.15.7.14 NMAC. For Multiple Completions: Attach wellbore diagram of proposed completion or recompletion.

It is intended to drill and complete the subject well in the Blanco Mesaverde (pool 72319) and Basin Dakota (pool 71599). The production will be commingled per Oil Conservation Division Order Number R-11363. Commingling will not reduce the value of the production.

Proposed perforations are: ~MV 3,983' - 4,872'; ~DK 6,610' - 6,864'. These perforations are in TVD.

Hilcorp Energy will use a spinner method using the attached procedure. We will run this procedure after initial completion, 3 months, 6 months and 12 months to ensure allocations are stabilizing. Annual spinners will be ran until the allocations have stabilized, at which point a fixed allocation will provided.

Notification of the intent to commingle the subject well was sent to all interest owners via certified mail on 1/14/2026, and a newspaper ad ran on ~1/16/2026.

Spud Date: [] Rig Release Date: []

I hereby certify that the information above is true and complete to the best of my knowledge and belief.

SIGNATURE Cherylene Weston TITLE Operations/Regulatory Tech-Sr. DATE 1/14/2026

Type or print name Cherylene Weston E-mail address: cweston@hilcorp.com PHONE: 713-289-2615

For State Use Only

APPROVED BY: [Signature] TITLE Petroleum Engineer DATE 04/28/26
Conditions of Approval (if any)

CONDITIONS OF APPROVAL

If an alteration is made to the Well or a condition within the Well changes which may cause the allocation of production to the Pools as approved within this Permit to become inaccurate, then no later than sixty (60) days after that event, the Operator shall submit Form C-103 to the OCD Engineering Bureau describing the event and include a revised allocation plan. If OCD denies the revised allocation plan, this Permit shall terminate on the date of such action.

If the downhole commingling of the Pools reduces the value of the oil and gas production to less than if it had remained segregated, no later than sixty (60) days after the decrease in value has occurred the Operator shall submit a new downhole commingling application to OCD to amend this Permit to remove the pool that caused the decrease in value. If the Operator fails to submit a new application, this Permit shall terminate on the following day, and if OCD denies the application, this Permit shall terminate on the date of such action.

If a completed interval of the Well is altered from what is submitted within this application, then no later than sixty (60) days after the alteration, the Operator shall submit Form C-103 to the OCD Engineering Bureau detailing the alteration and completed interval.

The Operator shall utilize production logs to allocate gas production from the Well to each of the Pools. Once the gas allocation is determined, the Operator shall then consider the gas oil ratio for each pool to allocate oil production from the Well to each of the Pools. The Operator shall conduct a production log:

- a. following the initial completion;
- b. three (3) months after the initial completion;
- c. six (6) months after the initial completion;
- d. twelve (12) months after the initial completion;
- e. annually thereafter until the allocation has stabilized; and
- f. additionally, as directed by OCD.

No later than ninety (90) days after conducting each production log, the Operator shall submit a Form C-103 to the OCD Engineering Bureau that includes the results of the production log and the oil and gas allocations for each of the Pools. Upon request from OCD, the Operator shall provide documentation supporting the allocations and if OCD determines that the allocations are inaccurate, the Operator shall proceed as directed by OCD.

Once the allocations have stabilized, the Operator shall submit a Form C-103 to the OCD Engineering Bureau that includes a tabulation of the oil and gas allocation following each of the conducted production logs and a proposed fixed percentage for allocating the oil and gas production from the Well to each of the Pools. If OCD approves the proposed fixed percentage, then the Operator shall allocate accordingly. If OCD denies the proposed fixed percentage, then the Operator shall continue conducting annual production logs.

A production log shall consist of either using a turbine/spinner flowmeter to determine the stabilized flow rate from each of the Pools under normal operating conditions or by another method OCD has specifically approved.



January 14, 2026

Mailed Certified with Electronic Return Receipt

To: All Interest Owners

RE: Application to Downhole Commingle Production
Well: Rhoda Abrams 002P
API: 30-045-38519
Section 05, Township 30 North, Range 11 West
San Juan County, New Mexico

Ladies and Gentlemen:

Hilcorp Energy Company ("Hilcorp"), as Operator of the subject well, has filed application with the New Mexico Oil Conservation Division ("NMOCD") for approval to downhole commingle production from the Blanco Mesaverde and the Basin Dakota, formations that Hilcorp soon intends to perforate. This letter and the application copy enclosed serve to provide you, an owner in one or more of the aforementioned formations, with written notice as prescribed by Subsection C of 19.15.12.11 New Mexico Administrative Code.

No action is required by you unless you wish to pursue a formal protest.

Any objections or requests for hearing must be submitted to the NMOCD's Santa Fe office, in writing, within twenty (20) days from the date the NMOCD receives the subject application.

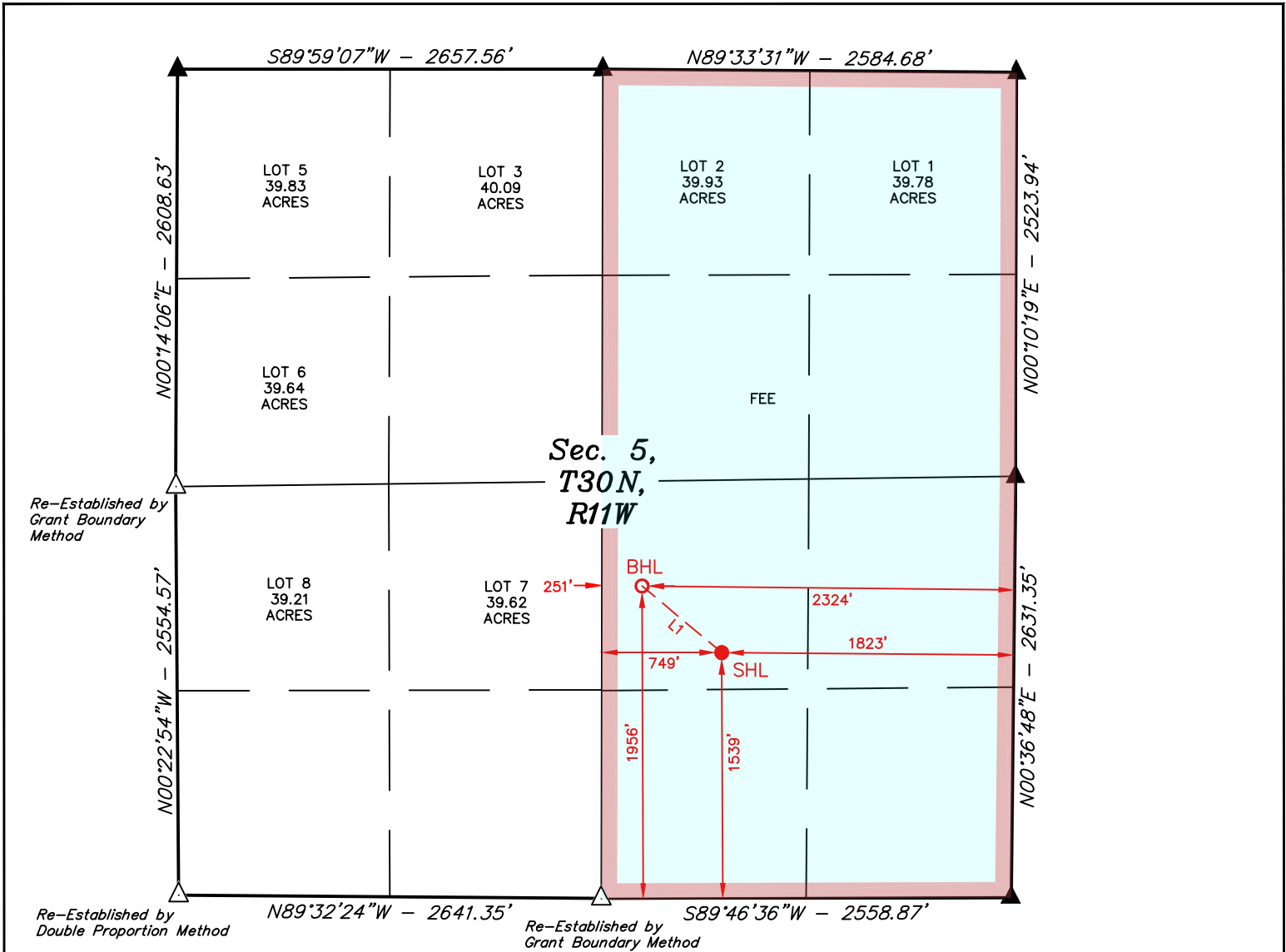
Sincerely,

A handwritten signature in blue ink, appearing to read 'Carson Parker Rice', is written over a light blue horizontal line.

Carson Parker Rice
Landman
713.757.7108
carice@hilcorp.com

CPR:dpk
Enclosures

Property Name RHODA ABRAMS	Well Number 2P	Drawn By C.D. 11-20-25	Revised By REV. 2 C.D. 12-09-25 (TYPO CORRECTIONS)
-------------------------------	-------------------	---------------------------	-------------------------------------------------------



NAD 83 (SURFACE HOLE LOCATION)
LATITUDE = 36°50'17.93" (36.838315°)
LONGITUDE = -108°00'40.73" (-108.011314°)
NAD 27 (SURFACE HOLE LOCATION)
LATITUDE = 36°50'17.92" (36.838311°)
LONGITUDE = -108°00'38.48" (-108.010690°)
STATE PLANE NAD 83 (N.M. WEST)
N: 2124517.71' E: 2671010.14'
STATE PLANE NAD 27 (N.M. WEST)
N: 2124454.26' E: 448099.80'

LINE TABLE		
LINE	DIRECTION	LENGTH
L1	N50°04'54"W	647.90'

NAD 83 (BOTTOM HOLE LOCATION)
LATITUDE = 36°50'22.04" (36.839454°)
LONGITUDE = -108°00'46.85" (-108.013014°)
NAD 27 (BOTTOM HOLE LOCATION)
LATITUDE = 36°50'22.02" (36.839451°)
LONGITUDE = -108°00'44.61" (-108.012390°)
STATE PLANE NAD 83 (N.M. WEST)
N: 2124933.47' E: 2670513.22'
STATE PLANE NAD 27 (N.M. WEST)
N: 2124870.01' E: 447602.89'

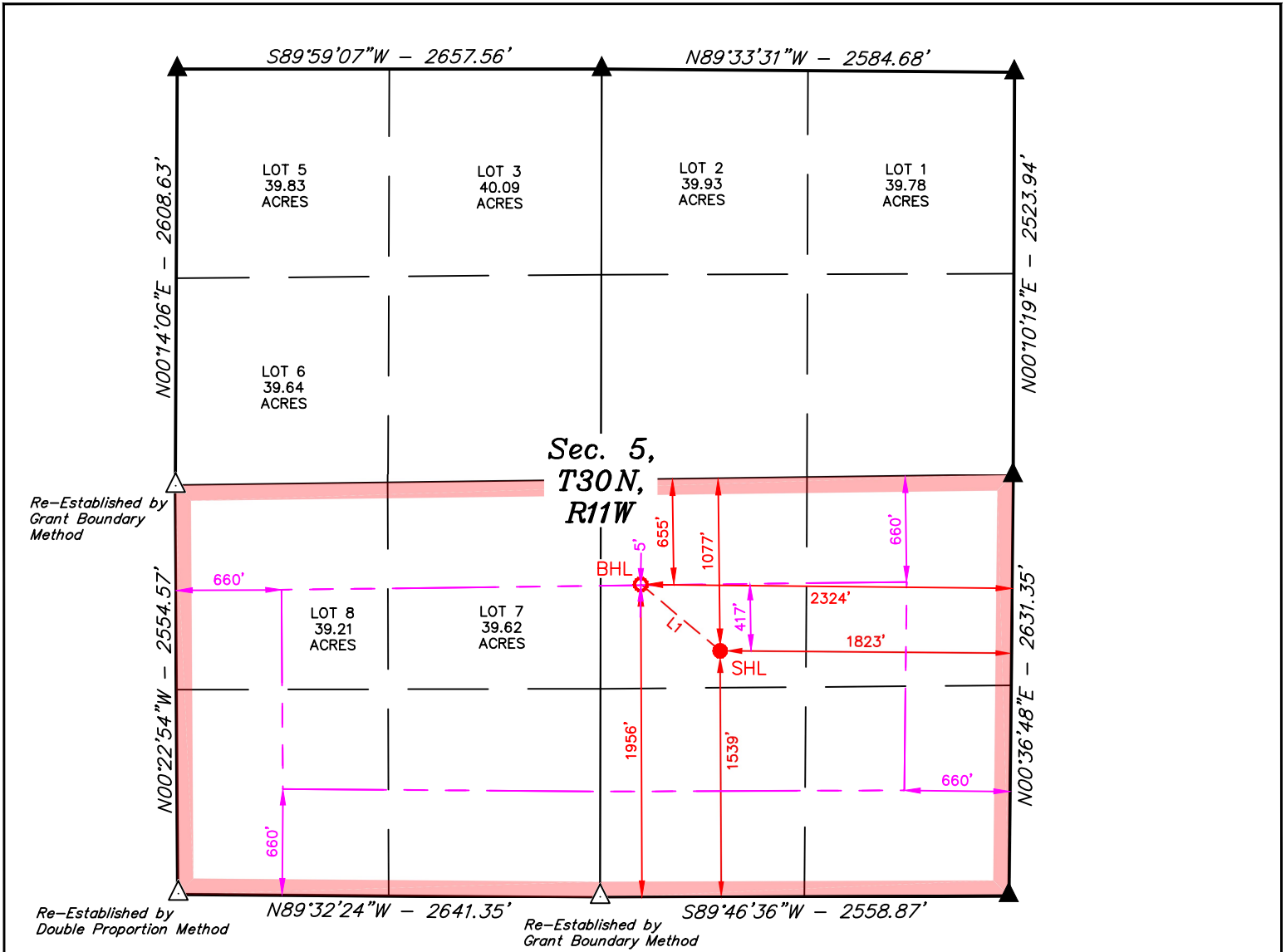


- = SURFACE HOLE LOCATION
- = BOTTOM HOLE LOCATION
- ▲ = SECTION CORNER LOCATED
- △ = SECTION CORNER RE-ESTABLISHED. (Not Set on Ground.)
- = DESIGNATED SPACING UNIT

NOTE:

- Distances referenced on plat to section lines are perpendicular.
- Bearings, Distances, Coordinates and Areas are based on the New Mexico Coordinate System of 1983, West Zone, in U.S. Feet.
- Colored areas within section lines represent oil & gas leases.
- Section breakdown information for this plat may be obtained from Utah Engineering & Land Survey.

Property Name RHODA ABRAMS	Well Number 2P	Drawn By C.D. 11-20-25	Revised By REV. 2 C.D. 12-09-25 (TYPO CORRECTIONS)
-------------------------------	-------------------	---------------------------	-------------------------------------------------------



NAD 83 (SURFACE HOLE LOCATION)	
LATITUDE = 36°50'17.93" (36.838315°)	
LONGITUDE = -108°00'40.73" (-108.011314°)	
NAD 27 (SURFACE HOLE LOCATION)	
LATITUDE = 36°50'17.92" (36.838311°)	
LONGITUDE = -108°00'38.48" (-108.010690°)	
STATE PLANE NAD 83 (N.M. WEST)	
N: 2124517.71' E: 2671010.14'	
STATE PLANE NAD 27 (N.M. WEST)	
N: 2124454.26' E: 448099.80'	

NAD 83 (BOTTOM HOLE LOCATION)	
LATITUDE = 36°50'22.04" (36.839454°)	
LONGITUDE = -108°00'46.85" (-108.013014°)	
NAD 27 (BOTTOM HOLE LOCATION)	
LATITUDE = 36°50'22.02" (36.839451°)	
LONGITUDE = -108°00'44.61" (-108.012390°)	
STATE PLANE NAD 83 (N.M. WEST)	
N: 2124933.47' E: 2670513.22'	
STATE PLANE NAD 27 (N.M. WEST)	
N: 2124870.01' E: 447602.89'	

LINE TABLE		
LINE	DIRECTION	LENGTH
L1	N50°04'54"W	647.90'



SCALE

- = SURFACE HOLE LOCATION
- = BOTTOM HOLE LOCATION
- ▲ = SECTION CORNER LOCATED
- △ = SECTION CORNER RE-ESTABLISHED. (Not Set on Ground.)
- = DESIGNATED SPACING UNIT
- = SETBACK BOUNDARY

NOTE:

- Distances referenced on plat to section lines are perpendicular.
- Bearings, Distances, Coordinates and Areas are based on the New Mexico Coordinate System of 1983, West Zone, in U.S. Feet.
- Section breakdown information for this plat may be obtained from Uintah Engineering & Land Survey.

REVENUE ALLOCATION PROCEDURE

DAKOTA/MESAVERDE WELLS

- 1.) Frac and flowback the Dakota formation
- 2.) Frac and flowback and clean up Mesaverde formation
- 3.) Stabilize MV flow up casing against area line pressure
- 4.) Record a MV flow rate through a choke using an orifice meter
- 5.) Drill out bridge plug over DK formation
- 6.) Cleanup DK formation
- 7.) Run Spinner production profile across Dakota formation
- 8.) Add MV flow rate from previous test to DK flow rate from spinner to get total flow
- 9.) Allocation is based upon MV or DK rates as a percentage of total flow

Once allocation is established, it will be used for the life of the well. Below is a summary of how the testing is performed.

Field Test (Spinner Method)

Summary

This example covers the procedure used to allocate production using the spinner method with field tests. This method was used by ConocoPhillips prior to the Burlington Resources acquisition and has been chosen as the preferred allocation method on all future Mesaverde/ Dakota commingled wells. The allocation is based on two separate tests. The first is a stabilized rate test on the Mesaverde up the casing-tubing annulus with line pressure simulated by a choke at the surface. The second test is performed by running a production log over the Dakota interval. The rate from each layer is used in a simple calculation to determine the contribution percentage.

Procedure

Allocation testing is performed after the well has been completed. A composite bridge plug is normally located above the DK and a composite frac plug is sometimes located within the MV.

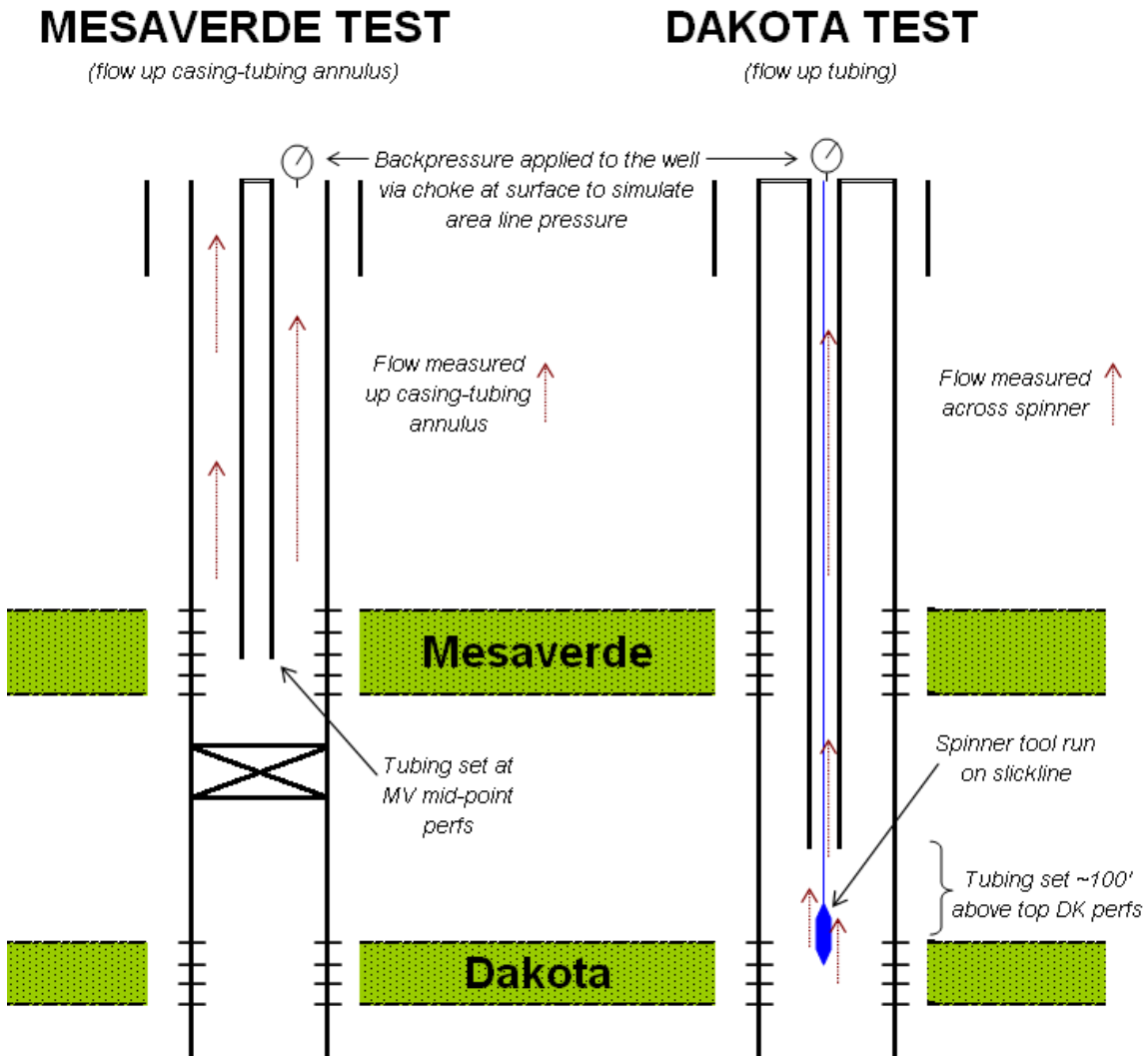
The first step in testing the MV is drilling out the plugs and cleaning out the well. Once water and sand volumes reach acceptable levels (less than 5 bph), the tubing is set at the mid-point of MV perfs. The well is then opened to flow up the casing-tubing annulus with a positive choke at the surface to simulate a back-pressure on the well. The MV is tested for a minimum of 4 hours or until pressure stabilizes. Tubing and casing pressures are reported every 15 minutes and when pressure is the same three times then it is considered stabilized. Metered gas, water, and condensate rates and volumes are all documented as well as testing conditions (tubing location, choke size, pressures).

After the MV has been tested, the composite drill plug over the DK is drilled out and the well is cleaned out to PBTD. Once the water and sand volumes reach acceptable levels (less than 5

bph), the bottom-hole assembly is configured and the tubing is landed approximately 100 feet above the DK perfs. A slickline or wireline unit is used to run the production loggings tools. The logging tools are lowered to the bottom perfs and the DK interval is logged while the well is producing up the tubing against a choke. Once again, the well is tested for a minimum of 4 hours or until the pressure has stabilized. The log is run across the entire DK interval to 50 feet above the top DK perforation. The log data is interpreted by the service company and returned to the completions group within a few days.

The stabilized MV rate is combined with the stabilized DK rate to come up with a total well production rate. The ratio of the MV rate to the total rate is used as the MV allocation percentage and the same is done for the DK. An example test and corresponding calculations are included in the report.

Diagram



Example- San Juan 31-6 Unit 40G

After the MV has been cleaned up and the well has stabilized, the MV is tested at 1,306 Mcfd (see report below). The test was performed up the tubing-casing annulus (4.5" casing/ 2.38" tubing) with a 1/2" choke at surface. The stabilized flowing casing pressure was 198 psi, which is similar to line pressure in the area.

Time Log							Operation
Start Time	End Time	Conn Dwg (Hrs)	Op Code	OpSub-C	Time P.N.T		
06:00	07:00	1.00	RPCCO...	SFTY	P		ROAD CREW TO LOCATION HOLD PJSM
07:00	10:00	4.00	RPCCO...	TRIP	P		POOH W/ 3 7/8" MILL T/H W/ RBP SET @ 6068'
10:00	11:00	5.00	RPCCO...	FCO	P		BLOW WELL TO UNLOAD KILL FLUID
11:00	15:00	8.00	RPCCO...	PRDT	P		PERFORATIONS 5087' - 6006' 2 3/8" TBNG SET @ 5580' TEST IS TO ATMOSPHERE ON 1/2" CHOKE FCP = 198 PSI SITP = 0 PSI PRODUCTION = 1306 MCF BBL OIL/DAY = 0 BBL WATER/DAY = 0 NO SAND WITNESSED BY: JOSE FRIAS
15:00	16:00	10.00	RPCCO...	FCO	P		BLOW DOWN WELL OPEN PIPE RAMS BLOW WELL
16:00	04:00	22.00	RPCCO...	FCO	P		BLOW WELL W/ NIGHT CREW

Well Fluids

Plus	Note	To (bbl)	From (bbl)	Non-renew (bbl)	Zone

Observation Cards (BST, STOP, etc)

Company	No. Rpts	Comment

Safety Meetings / Operational Checks

Time	Type	Description
07:00	Pre-Job Safety Meeting	WELLSITE PJSM

Page 1/2 Report Printed: 4/11/2008

Figure 1: Pulled from WellView Initial Completion Report

The DK is then cleaned up and the logging tools are run. The reports from ProTechnics show a total rate from the DK equal to 584 Mcfd (see report below). The test was performed at a flowing tubing pressure of 125 psi with a 1/2" choke at surface.

ProTechnics A CORE LABORATORIES COMPANY		Completion Profile Analysis		
Results				
The following table summarizes the production from each producing interval				
GAS / WATER PRODUCTION PROFILE				
Flow Rates Reported at STP				
Zone Intervals	Q-Water	Op-Water	Percent of Total	Q-Gas
feet	BFPD	BFPD		MCFD
Surface to 7860	2 bpd		100 %	584 Mcf/d

Figure 2: Pulled from Protechnics Report, pg. 6

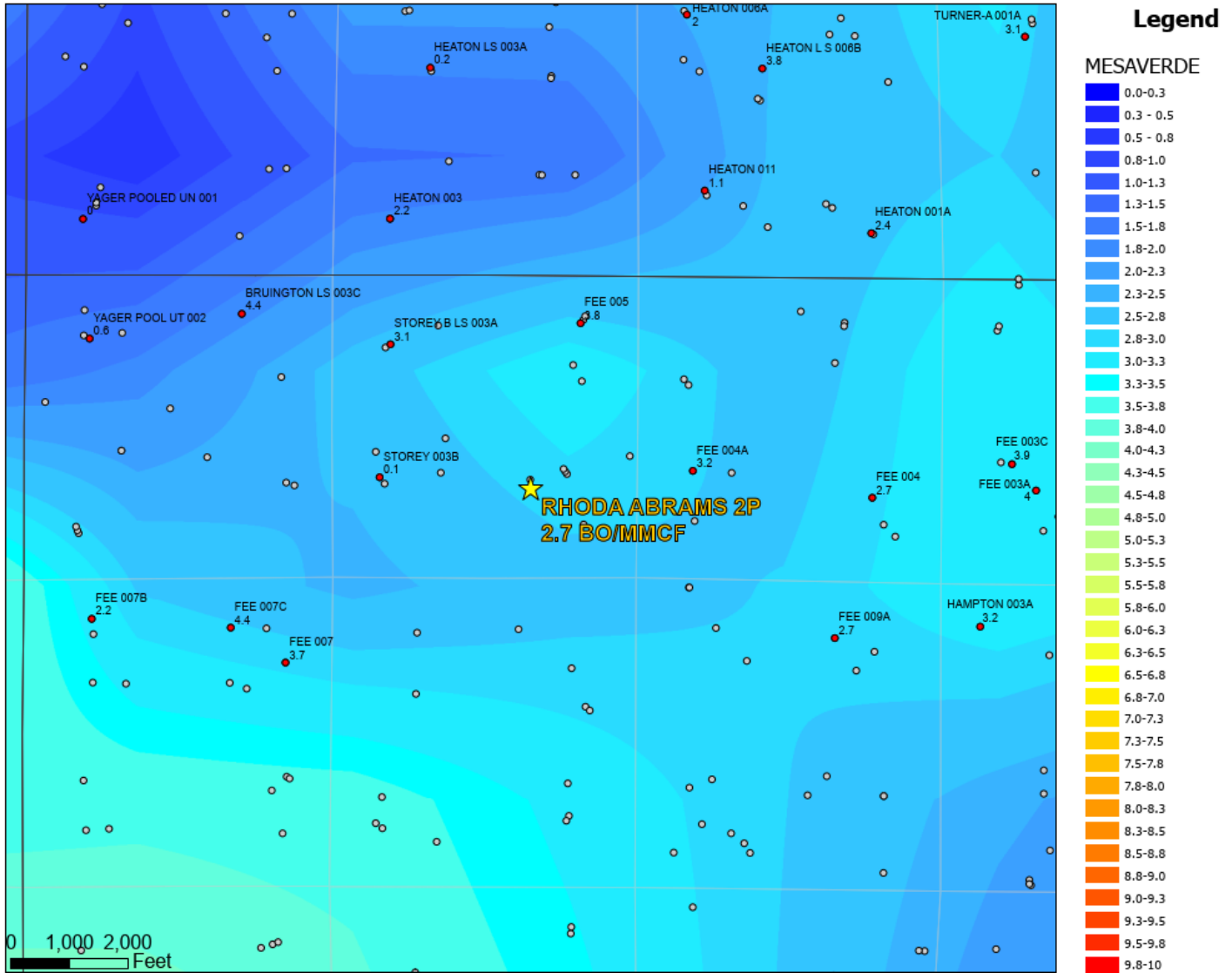
The allocation is calculated as follows and an allocation form is completed for the well. See Appendix for allocation form, WellView report, and ProTechnics report including production logs.

MV Rate	1306	% MV=	1306/1890=	69%
DK Rate	584	% DK=	584/1890=	31%
Total Rate	1890			

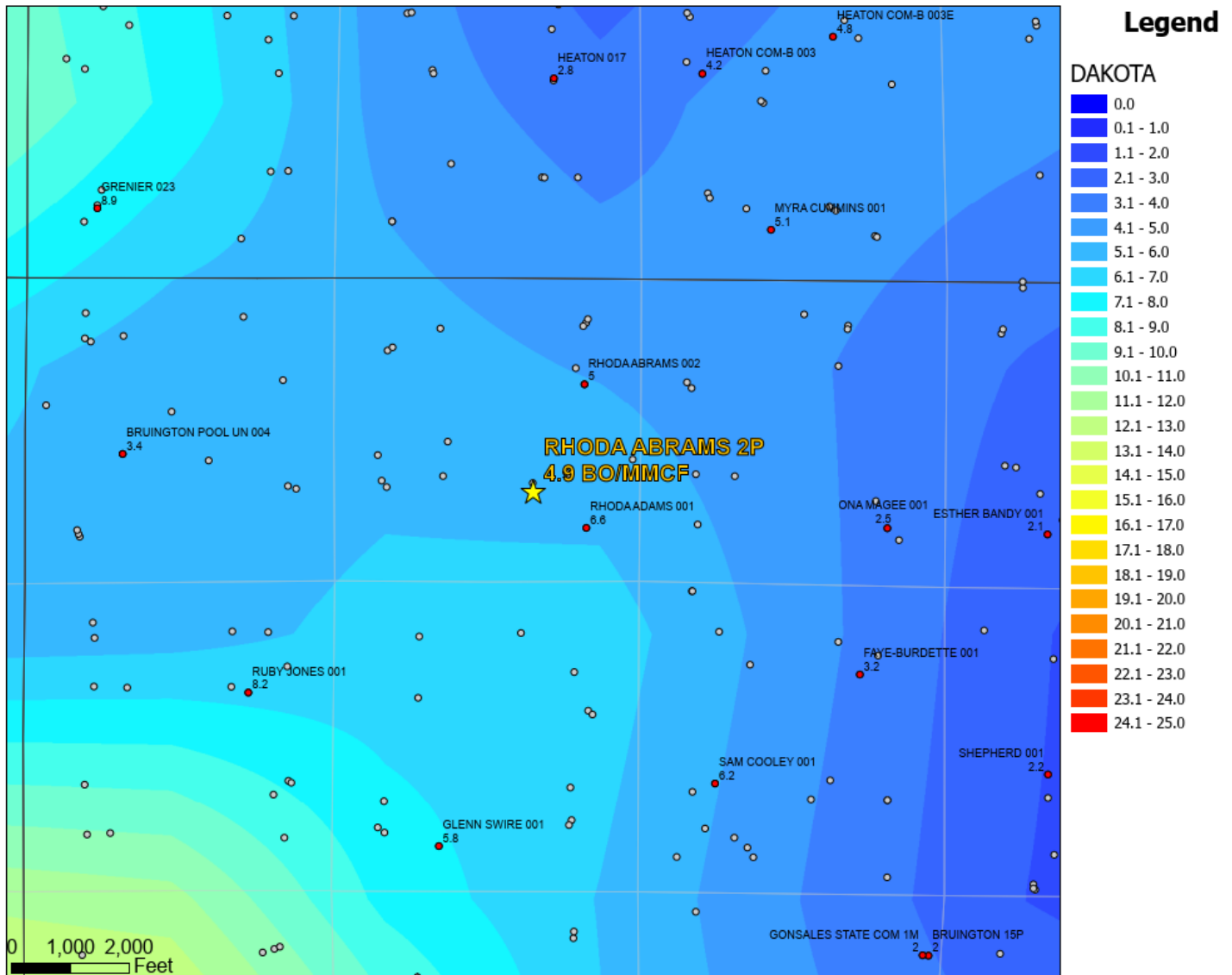
Oil Allocation:

Oil production will be allocated utilizing GOR in terms of oil yield based on actual production from offset Dakota and Mesaverde wells. Once gas allocation split is obtained from spinner, oil yield values will be applied to get final oil allocation split.

MESAVERDE GOR MAP



DAKOTA GOR MAP



Certified Number	Sender	Recipient	Date Mailed	Delivery Status
92148969009997901852996913	Dani Kuzma	, OFFICE OF NATURAL RESOURCES REVENUE, BLM FARMINGTON FIELD OFFICE, FARMINGTON, NM, 87402 Code: RHODA ABRAMS 2P DHC	1/14/2026	Signature Pending
92148969009997901852996920	Dani Kuzma	, CROSS TIMBERS ENERGY LLC, C/O DRILLINGINFO MAIL, DALLAS, TX, 75266- 9226 Code: RHODA ABRAMS 2P DHC	1/14/2026	Signature Pending
92148969009997901852996937	Dani Kuzma	, CAROLYN L METZLER, , ALBUQUERQUE, NM, 87120-3105 Code: RHODA ABRAMS 2P DHC	1/14/2026	Signature Pending
92148969009997901852996944	Dani Kuzma	, ELIZABETH FORGOTSON GOLDBERG, , BETHESDA, MD, 20817-6325 Code: RHODA ABRAMS 2P DHC	1/14/2026	Signature Pending
92148969009997901852996951	Dani Kuzma	, MITZI ANN HENDERSON EASLEY, , AUSTIN, TX, 78727 Code: RHODA ABRAMS 2P DHC	1/14/2026	Signature Pending
92148969009997901852996968	Dani Kuzma	, SUSAN H RITTER, , AUSTIN, TX, 78746 Code: RHODA ABRAMS 2P DHC	1/14/2026	Signature Pending
92148969009997901852996975	Dani Kuzma	, BETSY H BRYANT, , GEORGETOWN, TX, 78628 Code: RHODA ABRAMS 2P DHC	1/14/2026	Signature Pending
92148969009997901852996982	Dani Kuzma	, WPC OIL and GAS LP, , DALLAS, TX, 75204 Code: RHODA ABRAMS 2P DHC	1/14/2026	Signature Pending
92148969009997901852996999	Dani Kuzma	, GORDON NEAL and DORCAS ANN CRANE TRST, GORDON NEAL CRANE and DORCAS ANN, AZTEC, NM, 87410 Code: RHODA ABRAMS 2P DHC	1/14/2026	Signature Pending
92148969009997901852997002	Dani Kuzma	, DONALD C ADAMS REVOCABLE TRUST, SHAWN A ADAMS TRUSTEE, AZTEC, NM, 87410 Code: RHODA ABRAMS 2P DHC	1/14/2026	Signature Pending
92148969009997901852997019	Dani Kuzma	, RUSSELL D GRAY III, , CINCINNATI, OH, 45236 Code: RHODA ABRAMS 2P DHC	1/14/2026	Signature Pending
92148969009997901852997026	Dani Kuzma	, CITY OF AZTEC, , AZTEC, NM, 87410-1915 Code: RHODA ABRAMS 2P DHC	1/14/2026	Signature Pending

92148969009997901852997033	Dani Kuzma	, ELDEN R BEACH, , LARKSPUR, CO, 80118-0291 Code: RHODA ABRAMS 2P DHC	1/14/2026	Signature Pending
92148969009997901852997040	Dani Kuzma	, GORDON N CRANE JR, and DIANE CRANE JT, AZTEC, NM, 87410 Code: RHODA ABRAMS 2P DHC	1/14/2026	Signature Pending
92148969009997901852997057	Dani Kuzma	, MATTHEW W CRANE, , AZTEC, NM, 87410 Code: RHODA ABRAMS 2P DHC	1/14/2026	Signature Pending
92148969009997901852997064	Dani Kuzma	, HOLLY E MILLER ORTIZ, , EVERGREEN, CO, 80439 Code: RHODA ABRAMS 2P DHC	1/14/2026	Signature Pending
92148969009997901852997071	Dani Kuzma	, PLYDE RI LLC, , DALLAS, TX, 75204 Code: RHODA ABRAMS 2P DHC	1/14/2026	Signature Pending
92148969009997901852997088	Dani Kuzma	, EDWARD J ADKINS, , DENVER, CO, 80238 Code: RHODA ABRAMS 2P DHC	1/14/2026	Signature Pending
92148969009997901852997095	Dani Kuzma	, MARY F ADKINS, , ORMOND BEACH, FL, 32174 Code: RHODA ABRAMS 2P DHC	1/14/2026	Signature Pending
92148969009997901852997101	Dani Kuzma	, KATHRYN A ADKINS, , SAN DIEGO, CA, 92166 Code: RHODA ABRAMS 2P DHC	1/14/2026	Signature Pending
92148969009997901852997118	Dani Kuzma	, FRANCES R CUSACK, , AUSTIN, TX, 78732 Code: RHODA ABRAMS 2P DHC	1/14/2026	Signature Pending
92148969009997901852997125	Dani Kuzma	, SYLVESTER FRANCIS CUSACK II, , DALLAS, TX, 75382-2984 Code: RHODA ABRAMS 2P DHC	1/14/2026	Signature Pending
92148969009997901852997132	Dani Kuzma	, RAYMOND JOHN CUSACK JR, , DALLAS, TX, 75382 Code: RHODA ABRAMS 2P DHC	1/14/2026	Signature Pending
92148969009997901852997149	Dani Kuzma	, AMY GRAY HARRIS LIFE ESTATE, , EAST GRAND RAPIDS, MI, 49506 Code: RHODA ABRAMS 2P DHC	1/14/2026	Signature Pending
92148969009997901852997156	Dani Kuzma	, MICHAEL HOYT MILLER, , FAIRWAY, KS, 66205 Code: RHODA ABRAMS 2P DHC	1/14/2026	Signature Pending

92148969009997901852997163	Dani Kuzma	, GINGAH KERR MILNES, , BIG PINE KEY, FL, 33043 Code: RHODA ABRAMS 2P DHC	1/14/2026	Signature Pending
92148969009997901852997170	Dani Kuzma	, PATRICK LOUIS MOULDS, , VANCOUVER, WA, 98664 Code: RHODA ABRAMS 2P DHC	1/14/2026	Signature Pending
92148969009997901852997187	Dani Kuzma	, MICHAEL JAMES MOULDS, , WICHITA FALLS, TX, 76306 Code: RHODA ABRAMS 2P DHC	1/14/2026	Signature Pending
92148969009997901852997194	Dani Kuzma	, BARBARA LOUISE MOULDS, , ALBUQUERQUE, NM, 87190-0204 Code: RHODA ABRAMS 2P DHC	1/14/2026	Signature Pending
92148969009997901852997200	Dani Kuzma	, MARY ANN NORTON, , NEW SMYRNA BEACH, FL, 32168 Code: RHODA ABRAMS 2P DHC	1/14/2026	Signature Pending
92148969009997901852997217	Dani Kuzma	, JOHN W NORTON, , LUBBOCK, TX, 79416 Code: RHODA ABRAMS 2P DHC	1/14/2026	Signature Pending
92148969009997901852997224	Dani Kuzma	, NORTON ROYALTY LLC, , LUBBOCK, TX, 79416 Code: RHODA ABRAMS 2P DHC	1/14/2026	Signature Pending
92148969009997901852997231	Dani Kuzma	, BARBARA L NORTON, , LUBBOCK, TX, 79410 Code: RHODA ABRAMS 2P DHC	1/14/2026	Signature Pending
92148969009997901852997248	Dani Kuzma	, S HOWARD NORTON III, , LUBBOCK, TX, 79416 Code: RHODA ABRAMS 2P DHC	1/14/2026	Signature Pending
92148969009997901852997255	Dani Kuzma	, EDWILYN SCHRECK OBRIEN, DBA LYNNIE CO MINERALS LLC, DURANGO, CO, 81303 Code: RHODA ABRAMS 2P DHC	1/14/2026	Signature Pending
92148969009997901852997262	Dani Kuzma	, DOYLE D PARGIN JR, , ALBUQUERQUE, NM, 87122 Code: RHODA ABRAMS 2P DHC	1/14/2026	Signature Pending
92148969009997901852997279	Dani Kuzma	, KAREN KERR WIENKE, , LUBBOCK, TX, 79424-4618 Code: RHODA ABRAMS 2P DHC	1/14/2026	Signature Pending
92148969009997901852997286	Dani Kuzma	, ELLIOTT-HALL COMPANY, , OGDEN, UT, 84415 Code: RHODA ABRAMS 2P DHC	1/14/2026	Signature Pending

92148969009997901852997293	Dani Kuzma	, ELLIOTT INDUSTRIES, , SANTA FE, NM, 87504 Code: RHODA ABRAMS 2P DHC	1/14/2026	Signature Pending
92148969009997901852997309	Dani Kuzma	, ELLIOTT ENERGY LLC, , BUELLTON, CA, 93427 Code: RHODA ABRAMS 2P DHC	1/14/2026	Signature Pending
92148969009997901852997316	Dani Kuzma	, JO ANNE MOSS TRELOAR, , SANTA BARBARA, CA, 93105-9708 Code: RHODA ABRAMS 2P DHC	1/14/2026	Signature Pending
92148969009997901852997323	Dani Kuzma	, JAMES T BUCHENAU LIV TR UNDER REVOC, TRUST AGMT 9 13 1994, PLANO, TX, 75025-2810 Code: RHODA ABRAMS 2P DHC	1/14/2026	Signature Pending
92148969009997901852997330	Dani Kuzma	, CATHEDRA OIL and GAS LLC, , DALLAS, TX, 75204 Code: RHODA ABRAMS 2P DHC	1/14/2026	Signature Pending
92148969009997901852997347	Dani Kuzma	, JAN KERR, , COLORADO SPRINGS, CO, 80905-8104 Code: RHODA ABRAMS 2P DHC	1/14/2026	Signature Pending
92148969009997901852997354	Dani Kuzma	, JOANNE SMITH SPECIAL NEEDS TRUST, HOWARD T MORSE IV TTEE, NIPOMO, CA, 93444 Code: RHODA ABRAMS 2P DHC	1/14/2026	Signature Pending
92148969009997901852997361	Dani Kuzma	, GIULIA A MILLER URQUHART, , ALBUQUERQUE, NM, 87122 Code: RHODA ABRAMS 2P DHC	1/14/2026	Signature Pending
92148969009997901852997378	Dani Kuzma	, GARETH P FISHBAUGH, DBA HARTMAN-FISHBAUGH MINERAL, TYRONE, NY, 14887 Code: RHODA ABRAMS 2P DHC	1/14/2026	Signature Pending
92148969009997901852997385	Dani Kuzma	, EDWARD H FORGOTSON JR, , BETHESDA, MD, 20814 Code: RHODA ABRAMS 2P DHC	1/14/2026	Signature Pending
92148969009997901852997392	Dani Kuzma	, RHONDA I MCELHINEY, , GRAND JUNCTION, CO, 81502-0631 Code: RHODA ABRAMS 2P DHC	1/14/2026	Signature Pending
92148969009997901852997408	Dani Kuzma	, BETTY T ROGERS TRUST A JAN 4 1994, WESTERN COMMERCE BANK TRUSTEE, LOVINGTON, NM, 88260 Code: RHODA ABRAMS 2P DHC	1/14/2026	Signature Pending
92148969009997901852997415	Dani Kuzma	, MARY M WHITESIDE, , DALLAS, TX, 75205 Code: RHODA ABRAMS 2P DHC	1/14/2026	Signature Pending

92148969009997901852997422	Dani Kuzma	, JERRY DALE WINGET DECEDENTS TRUST B, SUE HELEN WINGET and JAMES H WINGET, PLEASANT GROVE, UT, 84062 Code: RHODA ABRAMS 2P DHC	1/14/2026	Signature Pending
92148969009997901852997439	Dani Kuzma	, VICTORIA ZIMMERMAN REV LIV TR DTD, 6 1 2011 and VICTORIA ZIMMERMAN TTEE, PLANO, TX, 75025-2829 Code: RHODA ABRAMS 2P DHC	1/14/2026	Signature Pending
92148969009997901852997446	Dani Kuzma	, 12-22-52 CORP, , DALLAS, TX, 75204 Code: RHODA ABRAMS 2P DHC	1/14/2026	Signature Pending
92148969009997901852997453	Dani Kuzma	, BRONCO OIL COMPANY, , OKLAHOMA CITY, OK, 73189 Code: RHODA ABRAMS 2P DHC	1/14/2026	Signature Pending
92148969009997901852997460	Dani Kuzma	, ANNE TERESA MOULDS-LAUGHLIN, , RENO, NV, 89509 Code: RHODA ABRAMS 2P DHC	1/14/2026	Signature Pending
92148969009997901852997477	Dani Kuzma	, MARGARET LEAH MOULDS-VITTITOW, , ALBUQUERQUE, NM, 87114 Code: RHODA ABRAMS 2P DHC	1/14/2026	Signature Pending
92148969009997901852997484	Dani Kuzma	, W PLACK CARR COMPANY, 4040 N CENTRAL EXPWY, DALLAS, TX, 75204 Code: RHODA ABRAMS 2P DHC	1/14/2026	Signature Pending
92148969009997901852997491	Dani Kuzma	, SADACA L C, , DALLAS, TX, 75204 Code: RHODA ABRAMS 2P DHC	1/14/2026	Signature Pending
92148969009997901852997507	Dani Kuzma	, GIN SHAPLYN ELLIOT LADUE, , ROPESVILLE, TX, 79358 Code: RHODA ABRAMS 2P DHC	1/14/2026	Signature Pending
92148969009997901852997514	Dani Kuzma	, SINIKKA GAY ELLIOTT, , SALT SPRING ISLAND, BC, V8K 1A9 Code: RHODA ABRAMS 2P DHC	1/14/2026	Signature Pending
92148969009997901852997521	Dani Kuzma	, ROBERT AUBREY ELLIOTT, , MONTREAL, QC, H2V 1E5 Code: RHODA ABRAMS 2P DHC	1/14/2026	Signature Pending
92148969009997901852997538	Dani Kuzma	, JOSHUA WRIGHT ELLIOTT, , BROOKLYN, NY, 11215 Code: RHODA ABRAMS 2P DHC	1/14/2026	Signature Pending
92148969009997901852997545	Dani Kuzma	, RICHARD A POER, , DURANGO, CO, 81301-5040 Code: RHODA ABRAMS 2P DHC	1/14/2026	Signature Pending

92148969009997901852997552	Dani Kuzma	, TYJSCHRECK- WALWORTH MINERALS LLC, TERRI KUNZ MGR MBR, JEFFERSON CITY, MT, 59638 Code: RHODA ABRAMS 2P DHC	1/14/2026	Signature Pending
92148969009997901852997569	Dani Kuzma	, EDWARD FORGOTSON SR MINTRDTD7/25/17, ANN Y M FORGOTSON ELIZABETH FORGOTS, MIAMI, FL, 33139 Code: RHODA ABRAMS 2P DHC	1/14/2026	Signature Pending
92148969009997901852997576	Dani Kuzma	, SIMCOE, LLC, , HOUSTON, TX, 77002-5632 Code: RHODA ABRAMS 2P DHC	1/14/2026	Signature Pending
92148969009997901852997583	Dani Kuzma	, JAN MOULDS, , FLOWER MOUND, TX, 75028 Code: RHODA ABRAMS 2P DHC	1/14/2026	Signature Pending
92148969009997901852997590	Dani Kuzma	, MATTHEW DAVID MOULDS, , LEWISVILLE, TX, 75067 Code: RHODA ABRAMS 2P DHC	1/14/2026	Signature Pending
92148969009997901852997606	Dani Kuzma	, MURPHY MCCAULE MOULDS, , CARROLLTON, TX, 75007 Code: RHODA ABRAMS 2P DHC	1/14/2026	Signature Pending
92148969009997901852997613	Dani Kuzma	, MADELINE MYRA MOULDS, , FLOWER MOUND, TX, 75028 Code: RHODA ABRAMS 2P DHC	1/14/2026	Signature Pending
92148969009997901852997620	Dani Kuzma	, DAVID STALCUP, , LUBBOCK, TX, 79413 Code: RHODA ABRAMS 2P DHC	1/14/2026	Signature Pending
92148969009997901852997637	Dani Kuzma	, SCHAEFER MINERALS LLC, , DURANGO, CO, 81301 Code: RHODA ABRAMS 2P DHC	1/14/2026	Signature Pending

Notice by Hilcorp Energy Company for Downhole Commingling, San Juan County, New Mexico. Pursuant to Paragraph (2) of Subsection C of 19.15.12.11 NMAC, Hilcorp Energy Company, as Operator, has filed form C-103 with the New Mexico Energy, Minerals and Natural Resources Department – Oil Conservation Division (NMOCD) seeking administrative approval to downhole commingle new production from the Blanco Mesaverde Pool (72319) and the Basin Dakota Pool (71599) in the Rhoda Abrams 2P well (API No. 30-045-38519) located in Unit J, Section 05, Township 30 North, Range 11 West, NMPM, San Juan County, New Mexico. Commingling will not reduce the value of production. Allocation method to be determined upon completion of this project. This notice is intended for certain unlocatable royalty interest owners in the aforementioned well for which certified mail delivery is not possible. Should you (the interest owner for which this notice is intended) have an objection, you are required to respond within twenty (20) days from the date of this publication. Please mail your objection letter, referencing the well details above, to the New Mexico Oil Conservation Division's Santa Fe office.

Sante Fe Main Office
Phone: (505) 476-3441

General Information
Phone: (505) 629-6116

Online Phone Directory
<https://www.emnrd.nm.gov/oecd/contact-us>

State of New Mexico
Energy, Minerals and Natural Resources
Oil Conservation Division
1220 S. St Francis Dr.
Santa Fe, NM 87505

CONDITIONS

Action 543660

CONDITIONS

Operator: HILCORP ENERGY COMPANY 1111 Travis Street Houston, TX 77002	OGRID: 372171
	Action Number: 543660
	Action Type: [C-107] Down Hole Commingle (C-107A)

CONDITIONS

Created By	Condition	Condition Date
llowe	See attached COA	4/28/2026