

Franklin Mountain Energy

Revised C-102s
Case No. 20773

District I
1625 N. French Dr., Hobbs, NM 88240
Phone: (575) 393-6161 Fax: (575) 393-0720
District II
811 S. First St., Artesia, NM 88210
Phone: (575) 748-1283 Fax: (575) 748-9720
District III
1000 Rio Brazos Road, Aztec, NM 87410
Phone: (505) 334-6178 Fax: (505) 334-6170
District IV
1220 S. St. Francis Dr., Santa Fe, NM 87505
Phone: (505) 476-3460 Fax: (505) 476-3462

State of New Mexico
Energy, Minerals & Natural Resources Department
OIL CONSERVATION DIVISION
1220 South St. Francis Dr.
Santa Fe, NM 87505

Form C-102
Revised August 1, 2011
Submit one copy to appropriate
District Office

☐ AMENDED REPORT

WELL LOCATION AND ACREAGE DEDICATION PLAT

¹ API Number	² Pool Code	³ Pool Name
	WC-98187	WC-025 G-09 S253502D Wildcat - Upper Wolfcamp Pool
⁴ Property Code	⁵ Property Name	⁶ Well Number
	OURAY FED COM	702H
⁷ OGRID No.	⁸ Operator Name	⁹ Elevation
373910	FRANKLIN MOUNTAIN ENERGY LLC	3392.4

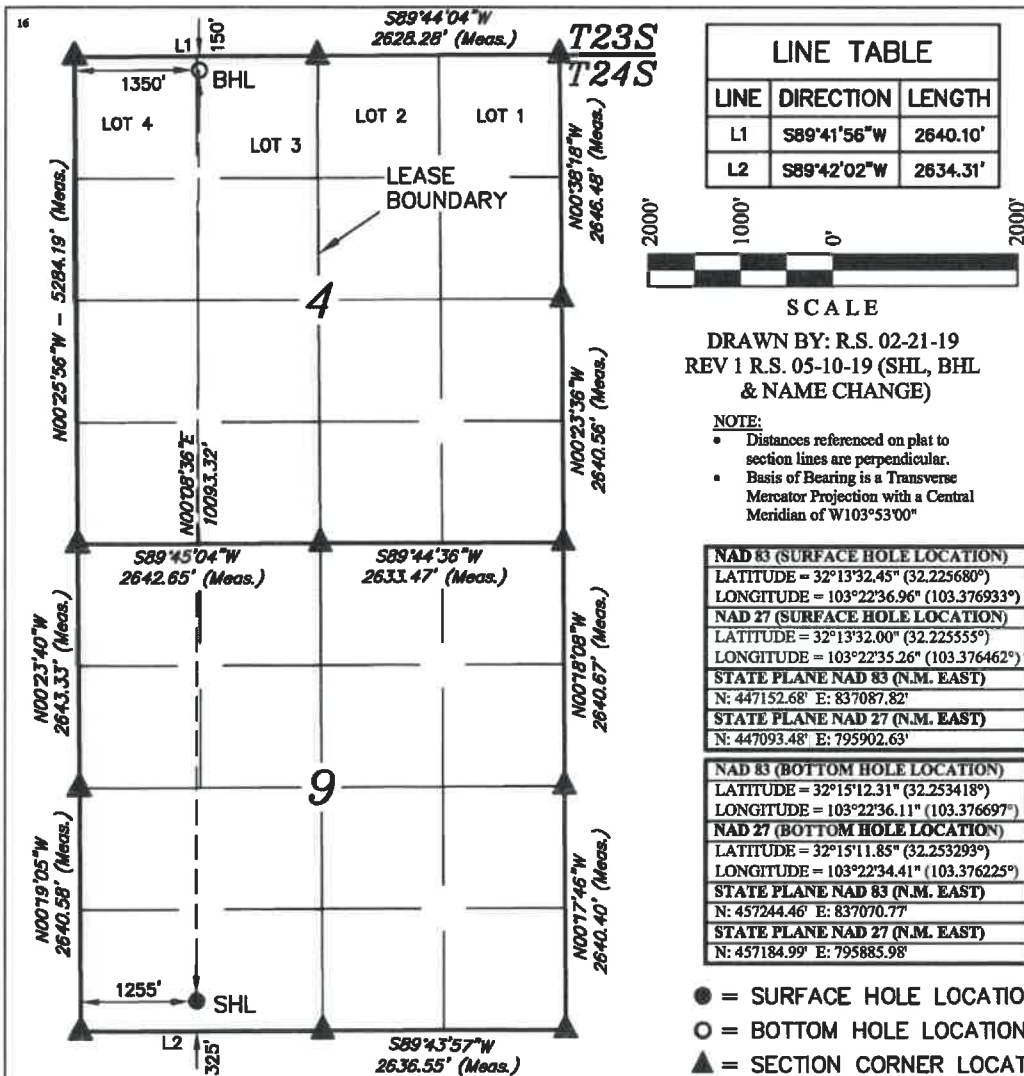
"Surface Location

UL or lot no.	Section	Township	Range	Lot Idn	Feet from the	North/South line	Feet from the	East/West line	County
M	9	24S	35E		325	SOUTH	1255	WEST	LEA

"Bottom Hole Location If Different From Surface

UL or lot no.	Section	Township	Range	Lot Idn	Feet from the	North/South line	Feet from the	East/West line	County
3	4	24S	35E		150	NORTH	1350	WEST	LEA
¹² Dedicated Acres	¹³ Joint or Infill	¹⁴ Consolidation Code	¹⁵ Order No.						
640.25									

No allowable will be assigned to this completion until all interests have been consolidated or a non-standard unit has been approved by the division.



"OPERATOR
CERTIFICATION

I hereby certify that the information contained herein is true and complete to the best of my knowledge and belief, and that this organization either owns a working interest or unleased mineral interest in the land including the proposed bottom hole location or has a right to drill this well at this location pursuant to a contract with an owner of such a mineral or working interest, or to a voluntary pooling agreement or a compulsory pooling order heretofore entered by the division.

Signature: *Shelly Albrecht* Date: 5/24/2019

Shelly Albrecht
Printed Name

salbrecht@fmellc.com
E-mail Address

"SURVEYOR
CERTIFICATION

I hereby certify that the well location shown on this plat was plotted from field notes of actual surveys made by me or under my supervision, and that the same is true and correct to the best of my belief.

MAY 08, 2019

Date of Survey
Signature and Seal of Professional Surveyor:



Certificate Number:

District I
1625 N. French Dr., Hobbs, NM 88240
Phone: (575) 393-6161 Fax: (575) 393-0720
District II
811 S. First St., Artesia, NM 88210
Phone: (575) 748-1283 Fax: (575) 748-9720
District III
1000 Rio Brazos Road, Aztec, NM 87410
Phone: (505) 334-6178 Fax: (505) 334-6170
District IV
1220 S. St. Francis Dr., Santa Fe, NM 87505
Phone: (505) 476-3460 Fax: (505) 476-3462

State of New Mexico
Energy, Minerals & Natural Resources Department
OIL CONSERVATION DIVISION
1220 South St. Francis Dr.
Santa Fe, NM 87505

Form C-102
Revised August 1, 2011
Submit one copy to appropriate
District Office

☐ AMENDED REPORT

WELL LOCATION AND ACREAGE DEDICATION PLAT

¹ API Number	² Pool Code WC-98187	³ Pool Name WC-025 G-09 S253502D Wildcat - Upper Wolfcamp Pool
⁴ Property Code	⁵ Property Name OURAY FED COM	⁶ Well Number 703H
⁷ OGRID No. 373910	⁸ Operator Name FRANKLIN MOUNTAIN ENERGY LLC	⁹ Elevation 3393.1'

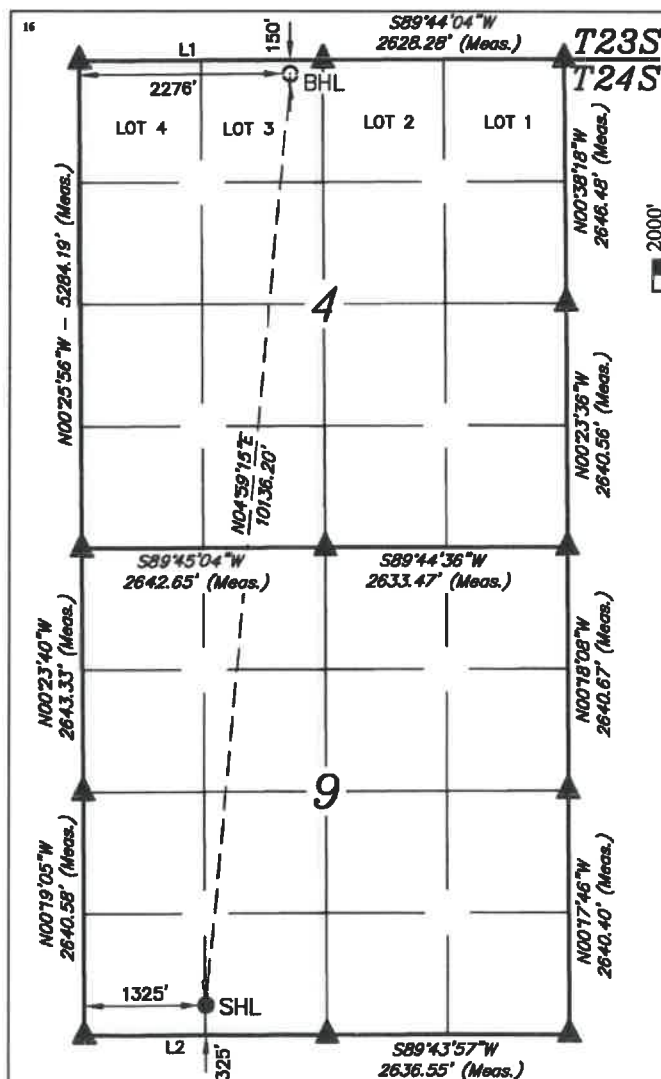
¹⁰ Surface Location

UL or lot no. N	Section 9	Township 24S	Range 35E	Lot Idn	Feet from the 325	North/South line SOUTH	Feet from the 1325	East/West line WEST	County LEA
--------------------	--------------	-----------------	--------------	---------	----------------------	---------------------------	-----------------------	------------------------	---------------

¹¹ Bottom Hole Location If Different From Surface

UL or lot no. 3	Section 4	Township 24S	Range 35E	Lot Idn	Feet from the 150	North/South line NORTH	Feet from the 2276	East/West line WEST	County LEA
¹² Dedicated Acres 640.25	¹³ Joint or Infill	¹⁴ Consolidation Code	¹⁵ Order No.						

No allowable will be assigned to this completion until all interests have been consolidated or a non-standard unit has been approved by the division.



LINE TABLE		
LINE	DIRECTION	LENGTH
L1	S89°41'56"W	2640.10'
L2	S89°42'02"W	2634.31'



SCALE

DRAWN BY: R.S. 02-21-19
REV 1 R.S. 05-10-19 (SHL, BHL
& NAME CHANGE)

NOTE:

- Distances referenced on plat to section lines are perpendicular.
- Basis of Bearing is a Transverse Mercator Projection with a Central Meridian of W103°53'00"

NAD 83 (SURFACE HOLE LOCATION)	
LATITUDE = 32°13'32.45" (32.225680°)	
LONGITUDE = 103°22'36.14" (103.376706°)	
NAD 27 (SURFACE HOLE LOCATION)	
LATITUDE = 32°13'32.00" (32.225555°)	
LONGITUDE = 103°22'34.45" (103.376236°)	
STATE PLANE NAD 83 (N.M. EAST)	
N: 447153.30' E: 837157.81'	
STATE PLANE NAD 27 (N.M. EAST)	
N: 447094.10' E: 795972.61'	

NAD 83 (BOTTOM HOLE LOCATION)	
LATITUDE = 32°15'12.31" (32.253420°)	
LONGITUDE = 103°22'25.33" (103.373702°)	
NAD 27 (BOTTOM HOLE LOCATION)	
LATITUDE = 32°15'11.86" (32.253294°)	
LONGITUDE = 103°22'23.63" (103.373230°)	
STATE PLANE NAD 83 (N.M. EAST)	
N: 457253.21' E: 837996.59'	
STATE PLANE NAD 27 (N.M. EAST)	
N: 457193.73' E: 796811.78'	

- = SURFACE HOLE LOCATION
- = BOTTOM HOLE LOCATION
- ▲ = SECTION CORNER LOCATED

¹⁷ OPERATOR
CERTIFICATION

I hereby certify that the information contained herein is true and complete to the best of my knowledge and belief, and that this organization either owns a working interest or unleased mineral interest in the land including the proposed bottom hole location or has a right to drill this well at this location pursuant to a contract with an owner of such a mineral or working interest, or to a voluntary pooling agreement or a compulsory pooling order heretofore entered by the division.

Signature: Shelly Albrecht Date: 5/24/2019

Printed Name: Shelly Albrecht

E-mail Address: salbrecht@fmellc.com

¹⁸ SURVEYOR
CERTIFICATION

I hereby certify that the well location shown on this plat was plotted from field notes of actual surveys made by me or under my supervision, and that the same is true and correct to the best of my belief.

MAY 08, 2019

Date of Survey
Signature and Seal of Professional Surveyor:



Certificate Number:

District I
1625 N. French Dr., Hobbs, NM 88240
Phone: (575) 393-6161 Fax: (575) 393-0720
District II
811 S. First St., Artesia, NM 88210
Phone: (575) 748-1283 Fax: (575) 748-9720
District III
1000 Rio Brazos Road, Aztec, NM 87410
Phone: (505) 334-6178 Fax: (505) 334-6170
District IV
1220 S. St. Francis Dr., Santa Fe, NM 87505
Phone: (505) 476-3460 Fax: (505) 476-3462

State of New Mexico
Energy, Minerals & Natural Resources Department
OIL CONSERVATION DIVISION
1220 South St. Francis Dr.
Santa Fe, NM 87505

Form C-102
Revised August 1, 2011
Submit one copy to appropriate
District Office

☐ AMENDED REPORT

WELL LOCATION AND ACREAGE DEDICATION PLAT

¹ API Number	² Pool Code WC-98187	³ Pool Name WC-025 G-09 S253502D Wildcat - Upper Wolfcamp Pool
⁴ Property Code	⁵ Property Name GEORGETOWN FED COM	⁶ Well Number 701H
⁷ OGRID No. 373910	⁸ Operator Name FRANKLIN MOUNTAIN ENERGY LLC	⁹ Elevation 3392.4

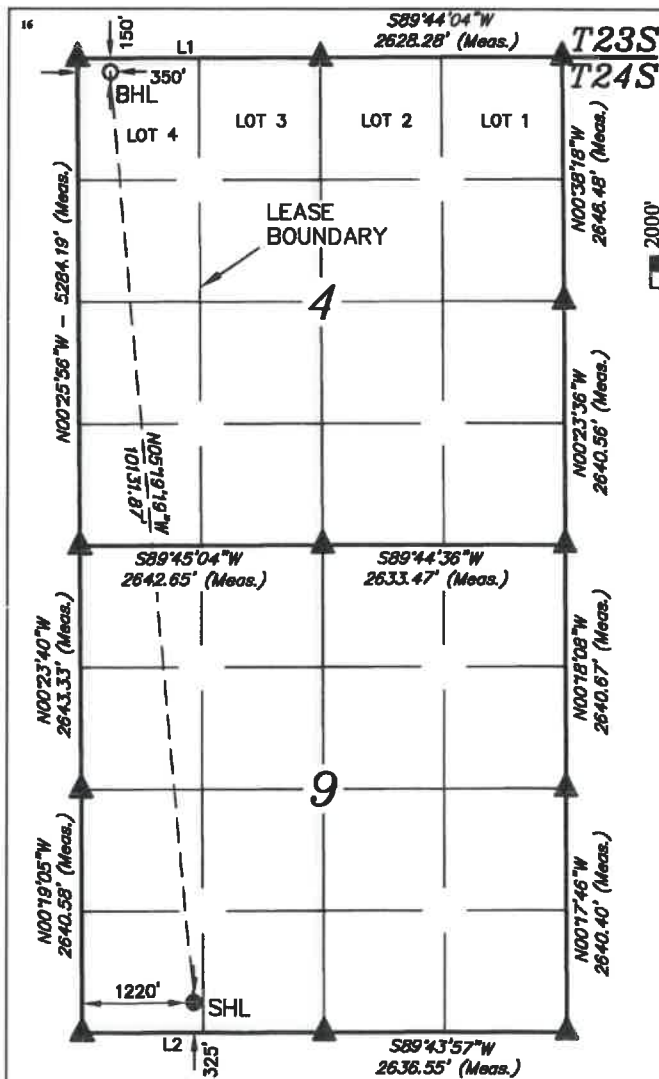
" Surface Location

UL or lot no.	Section	Township	Range	Lot Idn	Feet from the	North/South line	Feet from the	East/West line	County
M	9	24S	35E		325	SOUTH	1220	WEST	LEA

" Bottom Hole Location If Different From Surface

UL or lot no.	Section	Township	Range	Lot Idn	Feet from the	North/South line	Feet from the	East/West line	County
4	4	24S	35E		150	NORTH	350	WEST	LEA
¹² Dedicated Acres 640.25	¹³ Joint or Infill	¹⁴ Consolidation Code	¹⁵ Order No.						

No allowable will be assigned to this completion until all interests have been consolidated or a non-standard unit has been approved by the division.



LINE TABLE		
LINE	DIRECTION	LENGTH
L1	S89°41'56\"W	2640.10'
L2	S89°42'02\"W	2634.31'



SCALE

DRAWN BY: R.S. 02-21-19
REV 1 R.S. 05-10-19 (SHL, BHL
& NAME CHANGE)

NOTE:

- Distances referenced on plat to section lines are perpendicular.
- Basis of Bearing is a Transverse Mercator Projection with a Central Meridian of W103°53'00"

NAD 83 (SURFACE HOLE LOCATION)
LATITUDE = 32°13'32.45" (32.225680°)
LONGITUDE = 103°22'37.36" (103.377046°)
NAD 27 (SURFACE HOLE LOCATION)
LATITUDE = 32°13'32.00" (32.225555°)
LONGITUDE = 103°22'35.67" (103.376575°)
STATE PLANE NAD 83 (N.M. EAST)
N: 447152.38' E: 837052.83'
STATE PLANE NAD 27 (N.M. EAST)
N: 447093.18' E: 795867.64'

NAD 83 (BOTTOM HOLE LOCATION)
LATITUDE = 32°15'12.30" (32.253417°)
LONGITUDE = 103°22'47.75" (103.379931°)
NAD 27 (BOTTOM HOLE LOCATION)
LATITUDE = 32°15'11.85" (32.253291°)
LONGITUDE = 103°22'46.05" (103.379459°)
STATE PLANE NAD 83 (N.M. EAST)
N: 457235.02' E: 836070.96'
STATE PLANE NAD 27 (N.M. EAST)
N: 457175.56' E: 794886.20'

- = SURFACE HOLE LOCATION
- = BOTTOM HOLE LOCATION
- ▲ = SECTION CORNER LOCATED

" OPERATOR
CERTIFICATION

I hereby certify that the information contained herein is true and complete to the best of my knowledge and belief, and that this organization either owns a working interest or unleased mineral interest in the land including the proposed bottom hole location or has a right to drill this well at this location pursuant to a contract with an owner of such a mineral or working interest, or to a voluntary pooling agreement or a compulsory pooling order heretofore entered by the division.

Signature: Shelly Albrecht Date: 5/24/2019

Printed Name: Shelly Albrecht

E-mail Address: salbrecht@fmellc.com

" SURVEYOR
CERTIFICATION

I hereby certify that the well location shown on this plat was plotted from field notes of actual surveys made by me or under my supervision, and that the same is true and correct to the best of my belief.

MAY 08, 2019

Date of Survey: May 08, 2019
Signature and Seal of Professional Surveyor:



Certificate Number: