

**STATE OF NEW MEXICO
DEPARTMENT OF ENERGY, MINERALS AND NATURAL RESOURCES
OIL CONSERVATION DIVISION**

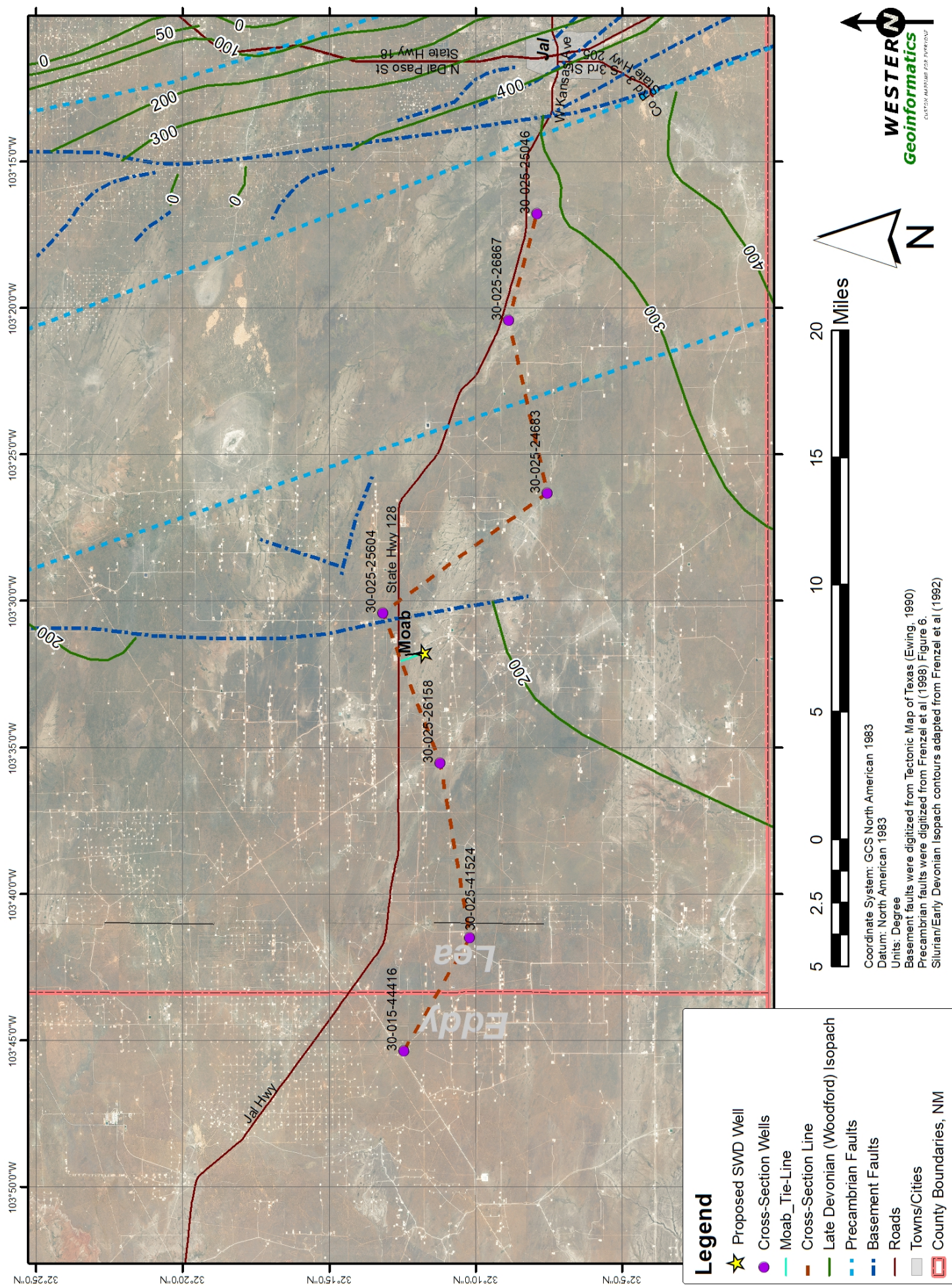
**APPLICATION OF NGL WATER SOLUTIONS
PERMIAN, LLC FOR APPROVAL OF SALT WATER
DISPOSAL WELL IN LEA COUNTY, NEW MEXICO**

Case No. 20896
[Original Case No. 16507]

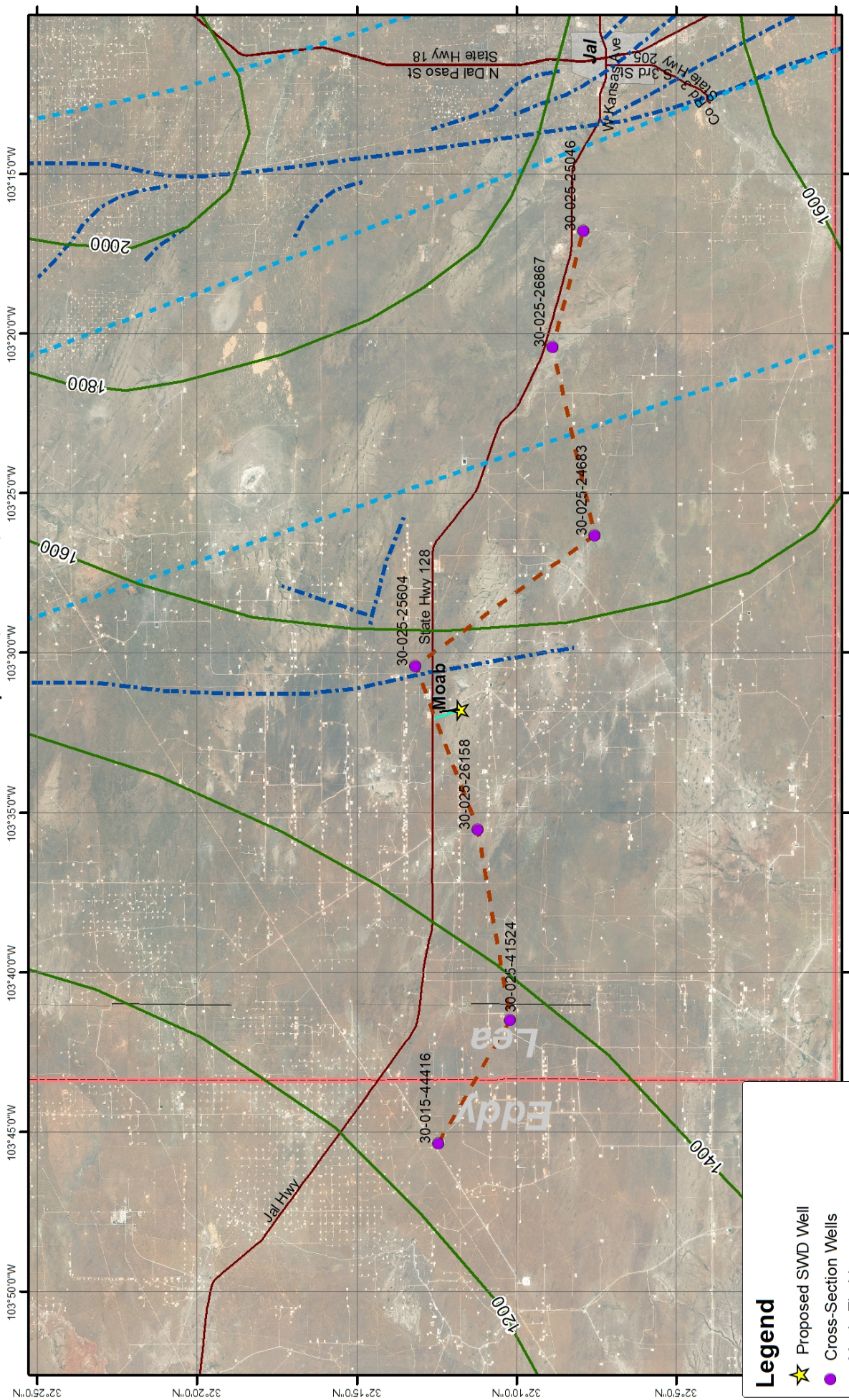
Table of Contents

Exhibit 1:	Application and C-108 Documents
Exhibit 2:	Affidavit of Scott Wilson
Exhibit 3:	Affidavit of Kate Ziegler
Exhibit 4:	Affidavit of Steven Taylor
Exhibit 5:	Notice Affidavit and Notice Letter

Woodford Isopach, Faults, Well Locations



Wristen-Fusselman Isopach, Faults, Well Locations



Legend

- ★ Proposed SWD Well
- Cross-Section Wells
- Moab_Tie-Line
- Cross-Section Line
- Sil/Dev (Wristen/Fusselman) Isopach
- Precambrian Faults
- Basement Faults
- Roads
- Towns/Cities
- ▭ County Boundaries, NM

Coordinate System: GCS North American 1983
 Datum: North American 1983
 Units: Degree

Basement faults were digitized from Tectonic Map of Texas (Ewing, 1990)
 Precambrian faults were digitized from Frenzel et al (1998) Figure 6.
 Silurian/Early Devonian Isopach contours adapted from Frenzel et al (1992)

Montoya Isopach, Faults, Well Locations

