

**STATE OF NEW MEXICO
ENERGY, MINERALS AND NATURAL RESOURCES DEPARTMENT
OIL CONSERVATION DIVISION**

**APPLICATIONS OF OXY USA INC.
FOR APPROVAL OF A 1,279.16-ACRE
NON-STANDARD HORIZONTAL
WELL SPACING UNIT AND
COMPULSORY POOLING, LEA
COUNTY, NEW MEXICO.**

CASE NOS. 23428 & 23429

NOTICE OF REPLACEMENT EXHIBIT C-2

OXY USA Inc. ("Oxy") (OGRID No. 16696) provides notice that it has filed the attached Replacement Exhibit C-2 which contains updated C-102s for each of the proposed initial wells in these cases that include the correct acreage dedication and acreage depiction on the well location plat. OXY respectfully requests that Replacement Exhibit C-2 be accepted into the record in these cases.

Respectfully submitted,

HOLLAND & HART LLP

By: 

Michael H. Feldewert
Adam G. Rankin
Julia Broggi
Paula M. Vance
P.O. Box 2208
Santa Fe, NM 87504-2208
(505) 988-4421
(505) 983-6043 Facsimile
mfeldewert@hollandhart.com
agrarkin@hollandhart.com
jbroggi@hollandhart.com
pmvance@hollandhart.com

ATTORNEYS FOR OXY USA INC.

CERTIFICATE OF SERVICE

I hereby certify that on April 14, 2023, I served a copy of the foregoing document to the following counsel of record via Electronic Mail to:

Ocean Munds-Dry
Elizabeth Ryan
Jobediah Rittenhouse
1048 Paseo de Peralta
Santa Fe, New Mexico 87501
(505) 780-8000
ocean.munds-dry@conocophillips.com
beth.ryan@conocophillips.com
joby.rittenhouse@conocophillips.com

**ATTORNEYS FOR COG OPERATING LLC AND
CONCHO OIL & GAS, LLC**



Adam G. Rankin

District I

1625 N. French Dr., Hobbs, NM 88240
Phone: (575) 393-6161 Fax: (575) 393-0720

District II

811 S. First St., Artesia, NM 88210
Phone: (575) 748-1283 Fax: (575) 748-9720

District III

1000 Rio Brazos Road, Aztec, NM 87410
Phone: (505) 334-6178 Fax: (505) 334-6170

District IV

1220 S. St. Francis Dr., Santa Fe, NM 87505
Phone: (505) 476-3460 Fax: (505) 476-3462

State of New Mexico

Energy, Minerals & Natural Resources Department

OIL CONSERVATION DIVISION

1220 South St. Francis Dr.

Santa Fe, NM 87505

Form C-102

Revised August 1, 2011

Submit one copy to appropriate

District Office

☐ AMENDED REPORT

WELL LOCATION AND ACREAGE DEDICATION PLAT

¹ API Number 30-025-	² Pool Code 98296	³ Pool Name WC-025 G-09 S223219D, Wolfcamp
⁴ Property Code	⁵ Property Name GOLD LOG 4_9 FED COM	⁶ Well Number 32H
⁷ OGRID No. 16696	⁸ Operator Name OXY USA INC.	⁹ Elevation 3797'

¹⁰ Surface Location

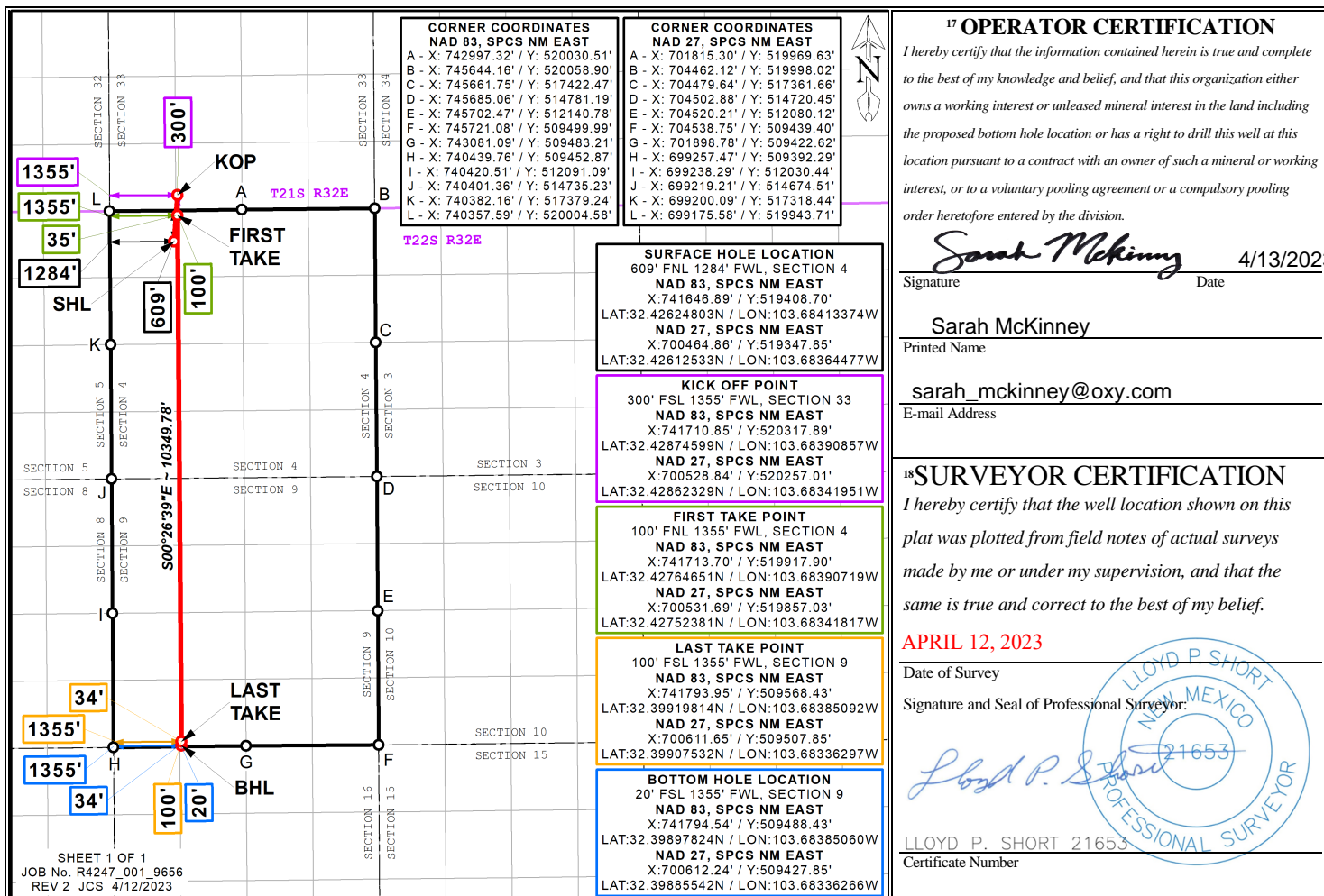
UL or lot no.	Section	Township	Range	Lot Idn	Feet from the	North/South line	Feet from the	East/West line	County
L 4	4	22S	32E		609	NORTH	1284	WEST	LEA

¹¹ Bottom Hole Location If Different From Surface

UL or lot no.	Section	Township	Range	Lot Idn	Feet from the	North/South line	Feet from the	East/West line	County
N	9	22S	32E		20	SOUTH	1355	WEST	LEA

¹² Dedicated Acres 1279.16	¹³ Joint or Infill	¹⁴ Consolidation Code	¹⁵ Order No.
------------------------------------------	-------------------------------	----------------------------------	-------------------------

No allowable will be assigned to this completion until all interests have been consolidated or a non-standard unit has been approved by the division.



Distances/areas relative to NAD 83 Combined Scale Factor: 0.99977749 Convergence Angle: 00°20'56.98000"

☐ Horizontal Spacing Unit

District I
1625 N. French Dr., Hobbs, NM 88240
Phone: (575) 393-6161 Fax: (575) 393-0720
District II
811 S. First St., Artesia, NM 88210
Phone: (575) 748-1283 Fax: (575) 748-9720
District III
1000 Rio Brazos Road, Aztec, NM 87410
Phone: (505) 334-6178 Fax: (505) 334-6170
District IV
1220 S. St. Francis Dr., Santa Fe, NM 87505
Phone: (505) 476-3460 Fax: (505) 476-3462

State of New Mexico
Energy, Minerals & Natural Resources Department
OIL CONSERVATION DIVISION
1220 South St. Francis Dr.
Santa Fe, NM 87505

Form C-102
Revised August 1, 2011
Submit one copy to appropriate
District Office

☐ AMENDED REPORT

WELL LOCATION AND ACREAGE DEDICATION PLAT

¹ API Number 30-025-	² Pool Code 98296	³ Pool Name WC-025 G-09 S223219D, Wolfcamp
⁴ Property Code	⁵ Property Name GOLD LOG 4_9 FED COM	⁶ Well Number 33H
⁷ OGRID No. 16696	⁸ Operator Name OXY USA INC.	⁹ Elevation 3797'

¹⁰ Surface Location

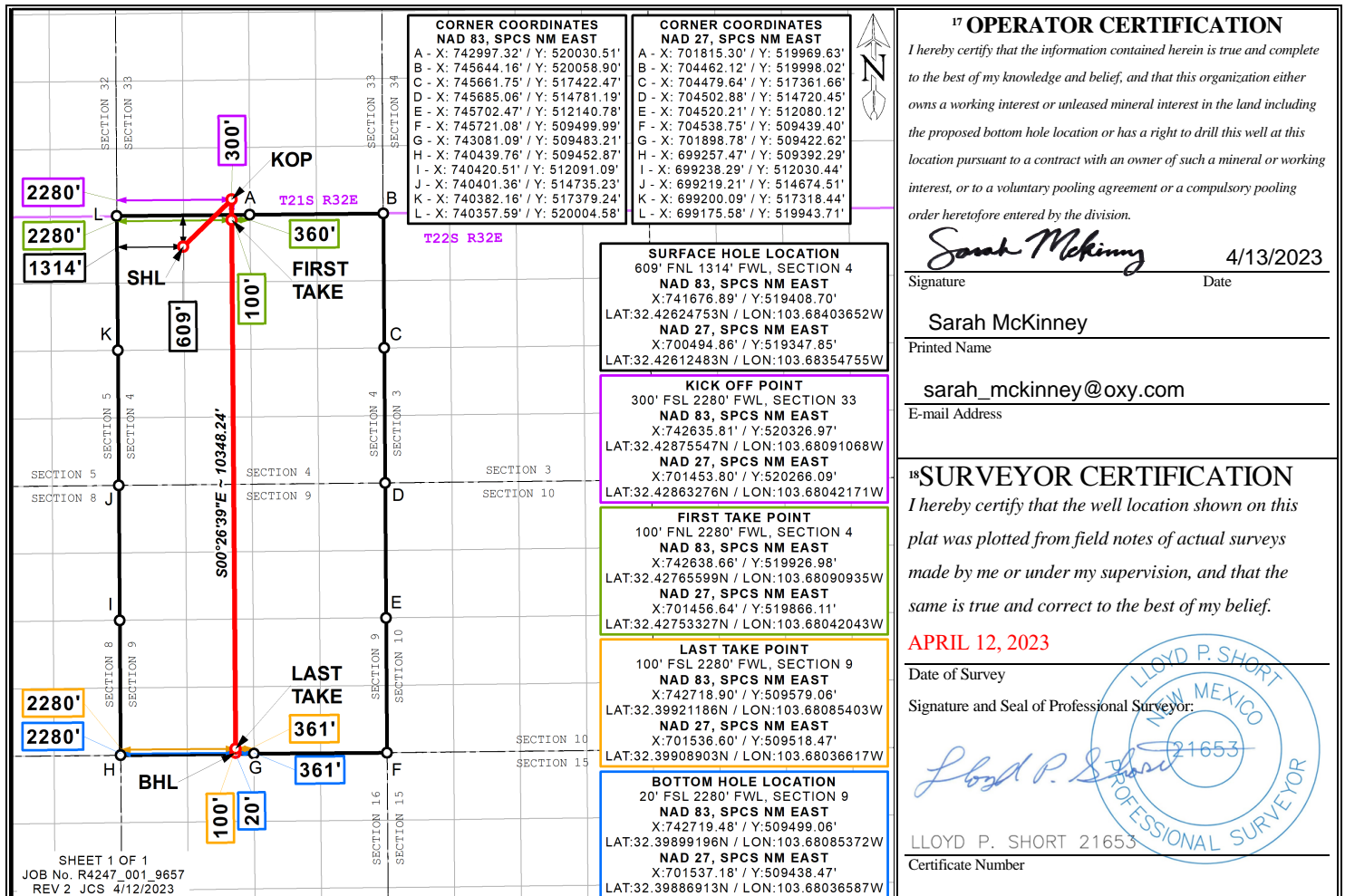
UL or lot no.	Section	Township	Range	Lot Idn	Feet from the	North/South line	Feet from the	East/West line	County
L 4	4	22S	32E		609	NORTH	1314	WEST	LEA

¹¹ Bottom Hole Location If Different From Surface

UL or lot no.	Section	Township	Range	Lot Idn	Feet from the	North/South line	Feet from the	East/West line	County
N	9	22S	32E		20	SOUTH	2280	WEST	LEA

¹² Dedicated Acres 1279.16	¹³ Joint or Infill	¹⁴ Consolidation Code	¹⁵ Order No.
------------------------------------------	-------------------------------	----------------------------------	-------------------------

No allowable will be assigned to this completion until all interests have been consolidated or a non-standard unit has been approved by the division.



Distances/areas relative to NAD 83 Combined Scale Factor: 0.99977749 Convergence Angle: 00°20'56.98000"

☐ Horizontal Spacing Unit

District I
1625 N. French Dr., Hobbs, NM 88240
Phone: (575) 393-6161 Fax: (575) 393-0720
District II
811 S. First St., Artesia, NM 88210
Phone: (575) 748-1283 Fax: (575) 748-9720
District III
1000 Rio Brazos Road, Aztec, NM 87410
Phone: (505) 334-6178 Fax: (505) 334-6170
District IV
1220 S. St. Francis Dr., Santa Fe, NM 87505
Phone: (505) 476-3460 Fax: (505) 476-3462

State of New Mexico
Energy, Minerals & Natural Resources Department
OIL CONSERVATION DIVISION
1220 South St. Francis Dr.
Santa Fe, NM 87505

Form C-102
Revised August 1, 2011
Submit one copy to appropriate
District Office

☐ AMENDED REPORT

WELL LOCATION AND ACREAGE DEDICATION PLAT

¹ API Number 30-025-	² Pool Code 98296	³ Pool Name WC-025 G-09 S223219D; Wolfcamp
⁴ Property Code	⁵ Property Name GOLD LOG 4_9 FED COM	⁶ Well Number 34H
⁷ OGRID No. 16696	⁸ Operator Name OXY USA INC.	⁹ Elevation 3797'

¹⁰ Surface Location

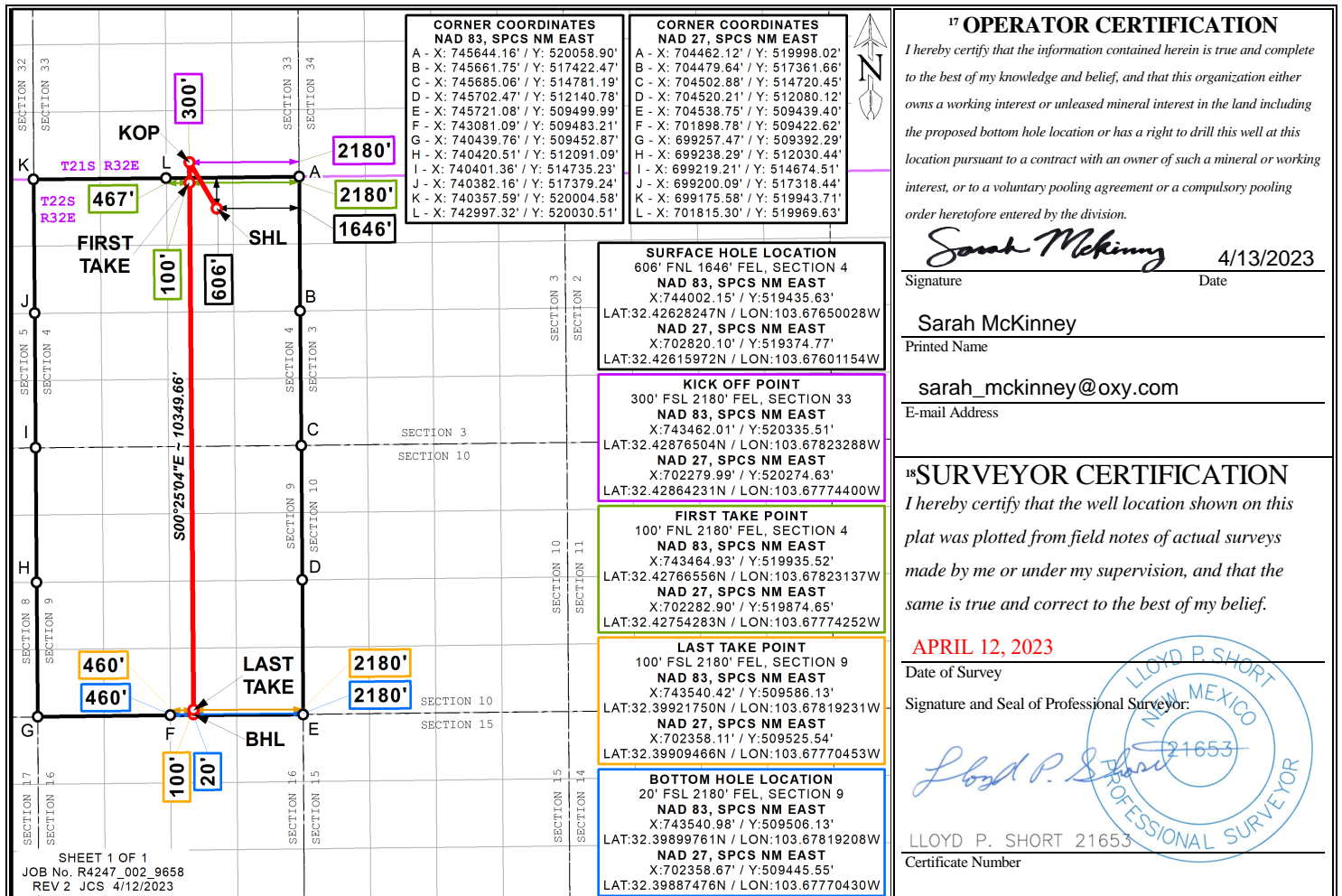
UL or lot no.	Section	Township	Range	Lot Idn	Feet from the	North/South line	Feet from the	East/West line	County
L 2	4	22S	32E		606	NORTH	1646	EAST	LEA

¹¹ Bottom Hole Location If Different From Surface

UL or lot no.	Section	Township	Range	Lot Idn	Feet from the	North/South line	Feet from the	East/West line	County
O	9	22S	32E		20	SOUTH	2180	EAST	LEA

¹² Dedicated Acres 1279.16	¹³ Joint or Infill	¹⁴ Consolidation Code	¹⁵ Order No.
------------------------------------------	-------------------------------	----------------------------------	-------------------------

No allowable will be assigned to this completion until all interests have been consolidated or a non-standard unit has been approved by the division.



Distances/areas relative to NAD 83 Combined Scale Factor: 0.99977749 Convergence Angle: 00°20'56.98000"

☐ Horizontal Spacing Unit

District I
1625 N. French Dr., Hobbs, NM 88240
Phone: (575) 393-6161 Fax: (575) 393-0720
District II
811 S. First St., Artesia, NM 88210
Phone: (575) 748-1283 Fax: (575) 748-9720
District III
1000 Rio Brazos Road, Aztec, NM 87410
Phone: (505) 334-6178 Fax: (505) 334-6170
District IV
1220 S. St. Francis Dr., Santa Fe, NM 87505
Phone: (505) 476-3460 Fax: (505) 476-3462

State of New Mexico
Energy, Minerals & Natural Resources Department
OIL CONSERVATION DIVISION
1220 South St. Francis Dr.
Santa Fe, NM 87505

Form C-102
Revised August 1, 2011
Submit one copy to appropriate
District Office

☐ AMENDED REPORT

WELL LOCATION AND ACREAGE DEDICATION PLAT

¹ API Number 30-025-	² Pool Code 98296	³ Pool Name WC-025 G-09 S223219D ; WOLFCAMP
⁴ Property Code	⁵ Property Name GOLD LOG 4_9 FED COM	⁶ Well Number 35H
⁷ OGRID No. 16696	⁸ Operator Name OXY USA INC.	⁹ Elevation 3797'

¹⁰ Surface Location

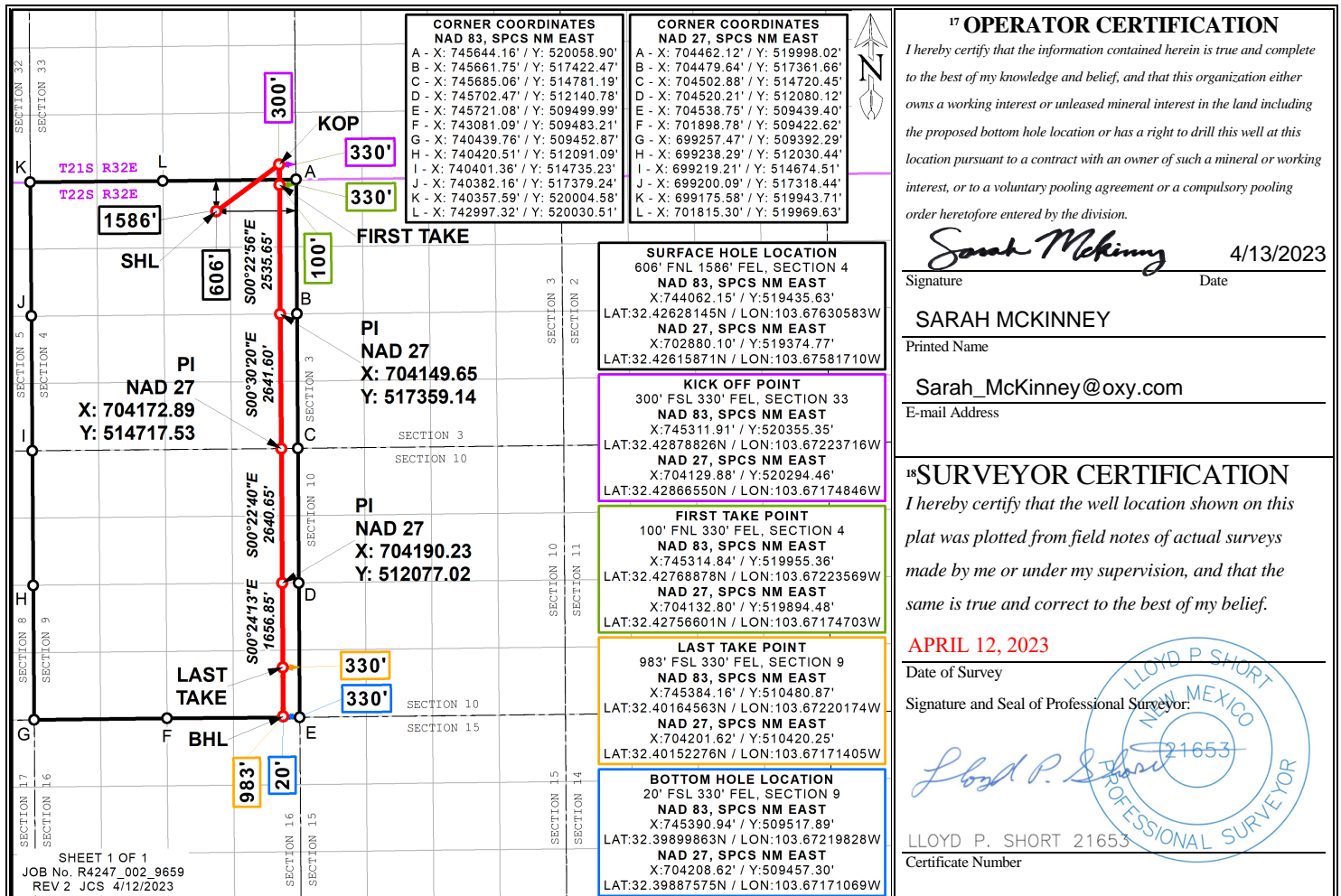
UL or lot no.	Section	Township	Range	Lot Idn	Feet from the	North/South line	Feet from the	East/West line	County
L 2	4	22S	32E		606	NORTH	1586	EAST	LEA

¹¹ Bottom Hole Location If Different From Surface

UL or lot no.	Section	Township	Range	Lot Idn	Feet from the	North/South line	Feet from the	East/West line	County
P	9	22S	32E		20	SOUTH	330	EAST	LEA

¹² Dedicated Acres 1279.16	¹³ Joint or Infill	¹⁴ Consolidation Code	¹⁵ Order No.
------------------------------------------	-------------------------------	----------------------------------	-------------------------

No allowable will be assigned to this completion until all interests have been consolidated or a non-standard unit has been approved by the division.



Distances/areas relative to NAD 83 Combined Scale Factor: 0.99977749 Convergence Angle: 00°20'56.98000"

☐ Horizontal Spacing Unit

District I
1625 N. French Dr., Hobbs, NM 88240
Phone: (575) 393-6161 Fax: (575) 393-0720
District II
811 S. First St., Artesia, NM 88210
Phone: (575) 748-1283 Fax: (575) 748-9720
District III
1000 Rio Brazos Road, Aztec, NM 87410
Phone: (505) 334-6178 Fax: (505) 334-6170
District IV
1220 S. St. Francis Dr., Santa Fe, NM 87505
Phone: (505) 476-3460 Fax: (505) 476-3462

State of New Mexico
Energy, Minerals & Natural Resources Department
OIL CONSERVATION DIVISION
1220 South St. Francis Dr.
Santa Fe, NM 87505

Form C-102
Revised August 1, 2011
Submit one copy to appropriate
District Office

☐ AMENDED REPORT

WELL LOCATION AND ACREAGE DEDICATION PLAT

¹ API Number 30-025-	² Pool Code 5695	³ Pool Name BILBREY BASIN; BONE SPRING
⁴ Property Code	⁵ Property Name GOLD LOG 4_9 FED COM	⁶ Well Number 71H
⁷ OGRID No. 16696	⁸ Operator Name OXY USA INC.	⁹ Elevation 3797'

¹⁰ Surface Location

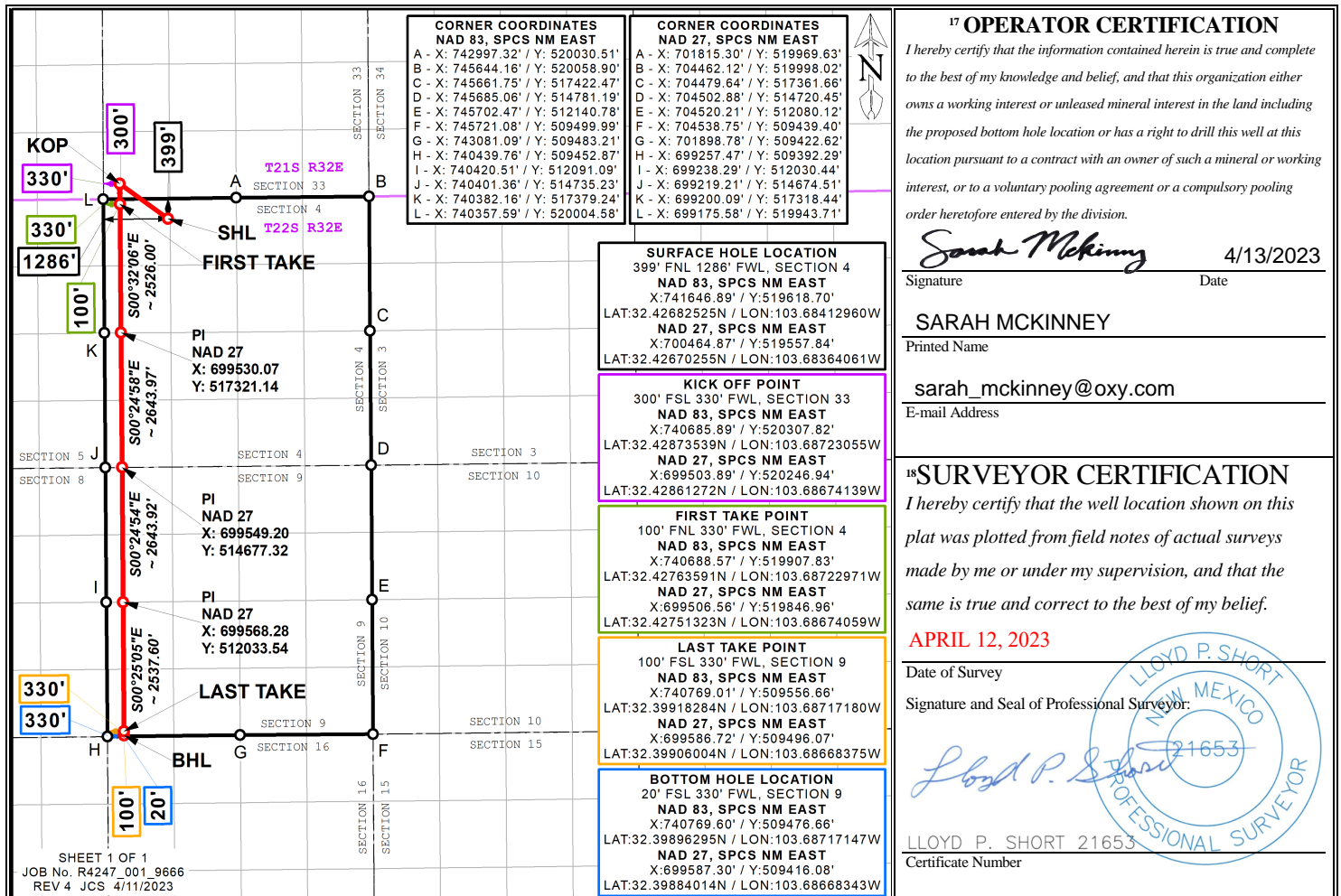
UL or lot no.	Section	Township	Range	Lot Idn	Feet from the	North/South line	Feet from the	East/West line	County
L 4	4	22S	32E		399	NORTH	1286	WEST	LEA

¹¹ Bottom Hole Location If Different From Surface

UL or lot no.	Section	Township	Range	Lot Idn	Feet from the	North/South line	Feet from the	East/West line	County
M	9	22S	32E		20	SOUTH	330	WEST	LEA

¹² Dedicated Acres 1279.16	¹³ Joint or Infill	¹⁴ Consolidation Code	¹⁵ Order No.
------------------------------------------	-------------------------------	----------------------------------	-------------------------

No allowable will be assigned to this completion until all interests have been consolidated or a non-standard unit has been approved by the division.



Distances/areas relative to NAD 83 Combined Scale Factor: 0.99977749 Convergence Angle: 00°20'56.98000"

☐ Horizontal Spacing Unit

District I
1625 N. French Dr., Hobbs, NM 88240
Phone: (575) 393-6161 Fax: (575) 393-0720
District II
811 S. First St., Artesia, NM 88210
Phone: (575) 748-1283 Fax: (575) 748-9720
District III
1000 Rio Brazos Road, Aztec, NM 87410
Phone: (505) 334-6178 Fax: (505) 334-6170
District IV
1220 S. St. Francis Dr., Santa Fe, NM 87505
Phone: (505) 476-3460 Fax: (505) 476-3462

State of New Mexico
Energy, Minerals & Natural Resources Department
OIL CONSERVATION DIVISION
1220 South St. Francis Dr.
Santa Fe, NM 87505

Form C-102
Revised August 1, 2011
Submit one copy to appropriate
District Office

☐ AMENDED REPORT

WELL LOCATION AND ACREAGE DEDICATION PLAT

¹ API Number 30-025-	² Pool Code 5695	³ Pool Name BILBREY BASIN; BONE SPRING
⁴ Property Code	⁵ Property Name GOLD LOG 4_9 FED COM	⁶ Well Number 72H
⁷ OGRID No. 16696	⁸ Operator Name OXY USA INC.	⁹ Elevation 3797'

¹⁰ Surface Location

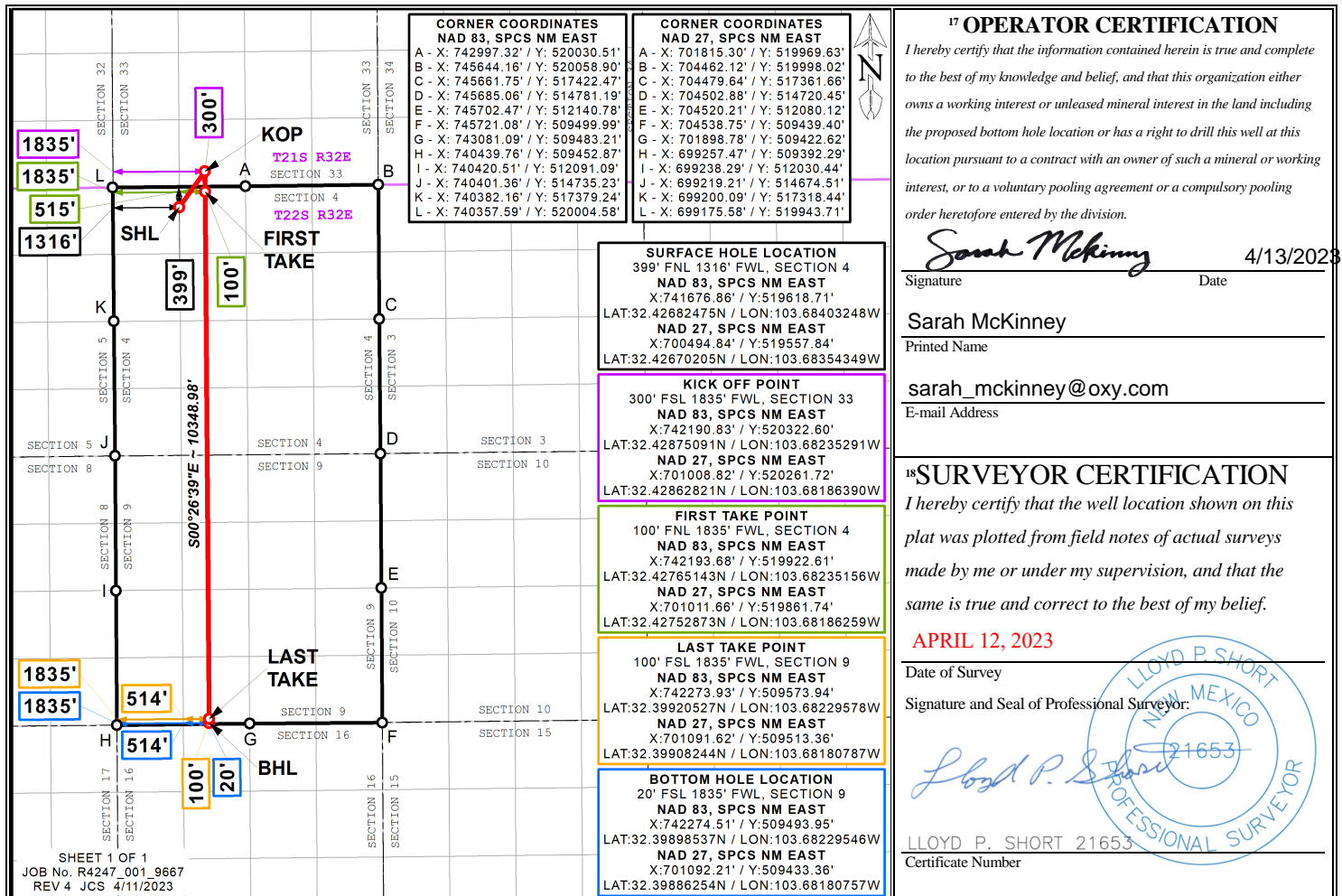
UL or lot no.	Section	Township	Range	Lot Idn	Feet from the	North/South line	Feet from the	East/West line	County
L 4	4	22S	32E		399	NORTH	1316	WEST	LEA

¹¹ Bottom Hole Location If Different From Surface

UL or lot no.	Section	Township	Range	Lot Idn	Feet from the	North/South line	Feet from the	East/West line	County
N	9	22S	32E		20	SOUTH	1835	WEST	LEA

¹² Dedicated Acres 1279.16	¹³ Joint or Infill	¹⁴ Consolidation Code	¹⁵ Order No.
------------------------------------------	-------------------------------	----------------------------------	-------------------------

No allowable will be assigned to this completion until all interests have been consolidated or a non-standard unit has been approved by the division.



Distances/areas relative to NAD 83 Combined Scale Factor: 0.99977749 Convergence Angle: 00°20'56.98000"

☐ Horizontal Spacing Unit

District I
1625 N. French Dr., Hobbs, NM 88240
Phone: (575) 393-6161 Fax: (575) 393-0720
District II
811 S. First St., Artesia, NM 88210
Phone: (575) 748-1283 Fax: (575) 748-9720
District III
1000 Rio Brazos Road, Aztec, NM 87410
Phone: (505) 334-6178 Fax: (505) 334-6170
District IV
1220 S. St. Francis Dr., Santa Fe, NM 87505
Phone: (505) 476-3460 Fax: (505) 476-3462

State of New Mexico
Energy, Minerals & Natural Resources Department
OIL CONSERVATION DIVISION
1220 South St. Francis Dr.
Santa Fe, NM 87505

Form C-102
Revised August 1, 2011
Submit one copy to appropriate
District Office

☐ AMENDED REPORT

WELL LOCATION AND ACREAGE DEDICATION PLAT

¹ API Number 30-025-	² Pool Code 5695	³ Pool Name BILBREY BASIN; BONE SPRING
⁴ Property Code	⁵ Property Name GOLD LOG 4_9 FED COM	⁶ Well Number 73H
⁷ OGRID No. 16696	⁸ Operator Name OXY USA INC.	⁹ Elevation 3797'

¹⁰ Surface Location

UL or lot no.	Section	Township	Range	Lot Idn	Feet from the	North/South line	Feet from the	East/West line	County
L 2	4	22S	32E		396	NORTH	1615	EAST	LEA

¹¹ Bottom Hole Location If Different From Surface

UL or lot no.	Section	Township	Range	Lot Idn	Feet from the	North/South line	Feet from the	East/West line	County
O	9	22S	32E		20	SOUTH	1935	EAST	LEA

¹² Dedicated Acres 1279.16	¹³ Joint or Infill	¹⁴ Consolidation Code	¹⁵ Order No.
------------------------------------------	-------------------------------	----------------------------------	-------------------------

No allowable will be assigned to this completion until all interests have been consolidated or a non-standard unit has been approved by the division.

	CORNER COORDINATES NAD 83, SPCS NM EAST A - X: 745644.16' / Y: 520058.90' B - X: 745661.75' / Y: 517422.47' C - X: 745685.06' / Y: 514781.19' D - X: 745702.47' / Y: 512140.78' E - X: 745721.08' / Y: 509499.99' F - X: 743081.09' / Y: 509483.21' G - X: 740439.76' / Y: 509452.87' H - X: 740420.51' / Y: 512091.09' I - X: 740401.36' / Y: 514735.23' J - X: 740382.16' / Y: 517379.24' K - X: 740357.59' / Y: 520004.58' L - X: 742997.32' / Y: 520030.51'	CORNER COORDINATES NAD 27, SPCS NM EAST A - X: 704462.12' / Y: 519998.02' B - X: 704479.64' / Y: 517361.66' C - X: 704502.88' / Y: 514720.45' D - X: 704520.21' / Y: 512080.12' E - X: 704538.75' / Y: 509439.40' F - X: 701898.78' / Y: 509422.62' G - X: 699257.47' / Y: 509392.29' H - X: 699238.29' / Y: 512030.44' I - X: 699219.21' / Y: 514674.51' J - X: 699200.09' / Y: 517318.44' K - X: 699175.58' / Y: 519943.71' L - X: 701815.30' / Y: 519969.63'	17 OPERATOR CERTIFICATION I hereby certify that the information contained herein is true and complete to the best of my knowledge and belief, and that this organization either owns a working interest or unleased mineral interest in the land including the proposed bottom hole location or has a right to drill this well at this location pursuant to a contract with an owner of such a mineral or working interest, or to a voluntary pooling agreement or a compulsory pooling order heretofore entered by the division. 04/13/2023 Signature _____ Date _____ Printed Name Sarah McKinney E-mail Address sarah_mckinney@oxy.com
	SURFACE HOLE LOCATION 396' FNL 1615' FEL, SECTION 4 NAD 83, SPCS NM EAST X: 744032.15' / Y: 519645.63' LAT: 32.42685917N / LON: 103.67639887W NAD 27, SPCS NM EAST X: 702850.11' / Y: 519584.76' LAT: 32.42673643N / LON: 103.67591012W		
	KICK OFF POINT 300' FSL 1935' FEL, SECTION 33 NAD 83, SPCS NM EAST X: 743707.00' / Y: 520338.14' LAT: 32.42876813N / LON: 103.67743886W NAD 27, SPCS NM EAST X: 702524.98' / Y: 520277.25' LAT: 32.42864540N / LON: 103.67695000W		
	FIRST TAKE POINT 100' FSL 1935' FEL, SECTION 4 NAD 83, SPCS NM EAST X: 743709.92' / Y: 519938.15' LAT: 32.42766865N / LON: 103.67743735W NAD 27, SPCS NM EAST X: 702527.89' / Y: 519877.27' LAT: 32.42754592N / LON: 103.67694853W		
	LAST TAKE POINT 100' FSL 1935' FEL, SECTION 9 NAD 83, SPCS NM EAST X: 743785.41' / Y: 509587.69' LAT: 32.39921765N / LON: 103.67739854W NAD 27, SPCS NM EAST X: 702603.10' / Y: 509527.10' LAT: 32.39909480N / LON: 103.67691078W		
BOTTOM HOLE LOCATION 20' FSL 1935' FEL, SECTION 9 NAD 83, SPCS NM EAST X: 743785.97' / Y: 509507.69' LAT: 32.39899776N / LON: 103.67739830W NAD 27, SPCS NM EAST X: 702603.66' / Y: 509447.10' LAT: 32.39887491N / LON: 103.67691055W		18 SURVEYOR CERTIFICATION I hereby certify that the well location shown on this plat was plotted from field notes of actual surveys made by me or under my supervision, and that the same is true and correct to the best of my belief. APRIL 12, 2023 Date of Survey _____ Signature and Seal of Professional Surveyor: LLOYD P. SHORT 21653 Certificate Number _____	

Distances/areas relative to NAD 83 Combined Scale Factor: 0.99977749 Convergence Angle: 00°20'56.98000"

☐ Horizontal Spacing Unit

District I
1625 N. French Dr., Hobbs, NM 88240
Phone: (575) 393-6161 Fax: (575) 393-0720
District II
811 S. First St., Artesia, NM 88210
Phone: (575) 748-1283 Fax: (575) 748-9720
District III
1000 Rio Brazos Road, Aztec, NM 87410
Phone: (505) 334-6178 Fax: (505) 334-6170
District IV
1220 S. St. Francis Dr., Santa Fe, NM 87505
Phone: (505) 476-3460 Fax: (505) 476-3462

State of New Mexico
Energy, Minerals & Natural Resources Department
OIL CONSERVATION DIVISION
1220 South St. Francis Dr.
Santa Fe, NM 87505

Form C-102
Revised August 1, 2011
Submit one copy to appropriate
District Office
☐ AMENDED REPORT

WELL LOCATION AND ACREAGE DEDICATION PLAT

¹ API Number 30-025-	² Pool Code 5695	³ Pool Name BILBREY BASIN; BONE SPRING
⁴ Property Code	⁵ Property Name GOLD LOG 4_9 FED COM	⁶ Well Number 74H
⁷ OGRID No. 16696	⁸ Operator Name OXY USA INC.	⁹ Elevation 3796'

¹⁰ Surface Location

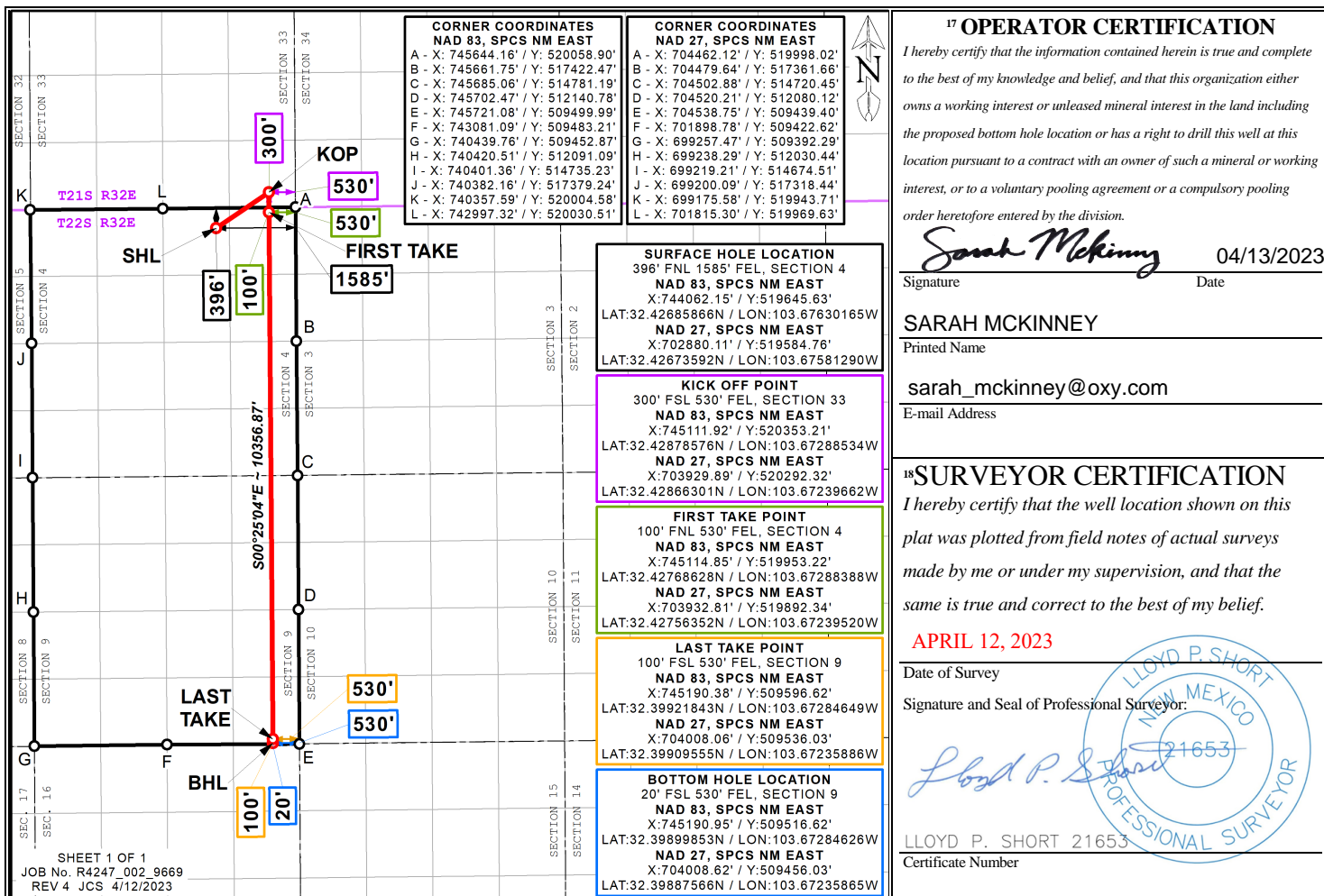
UL or lot no.	Section	Township	Range	Lot Idn	Feet from the	North/South line	Feet from the	East/West line	County
L 2	4	22S	32E		396	NORTH	1585	EAST	LEA

¹¹ Bottom Hole Location If Different From Surface

UL or lot no.	Section	Township	Range	Lot Idn	Feet from the	North/South line	Feet from the	East/West line	County
P	9	22S	32E		20	SOUTH	530	EAST	LEA

¹² Dedicated Acres 1279.16	¹³ Joint or Infill	¹⁴ Consolidation Code	¹⁵ Order No.
------------------------------------------	-------------------------------	----------------------------------	-------------------------

No allowable will be assigned to this completion until all interests have been consolidated or a non-standard unit has been approved by the division.



Distances/areas relative to NAD 83 Combined Scale Factor: 0.99977749 Convergence Angle: 00°20'56.98000"

☐ Horizontal Spacing Unit

District I
1625 N. French Dr., Hobbs, NM 88240
Phone: (575) 393-6161 Fax: (575) 393-0720
District II
811 S. First St., Artesia, NM 88210
Phone: (575) 748-1283 Fax: (575) 748-9720
District III
1000 Rio Brazos Road, Aztec, NM 87410
Phone: (505) 334-6178 Fax: (505) 334-6170
District IV
1220 S. St. Francis Dr., Santa Fe, NM 87505
Phone: (505) 476-3460 Fax: (505) 476-3462

State of New Mexico
Energy, Minerals & Natural Resources Department
OIL CONSERVATION DIVISION
1220 South St. Francis Dr.
Santa Fe, NM 87505

Form C-102
Revised August 1, 2011
Submit one copy to appropriate
District Office
☐ AMENDED REPORT

WELL LOCATION AND ACREAGE DEDICATION PLAT

¹ API Number 30-025-	² Pool Code 98296	³ Pool Name WC-025 G-09 S223219D, Wolfcamp
⁴ Property Code	⁵ Property Name GOLD LOG 4_9 FED COM	⁶ Well Number 311H
⁷ OGRID No. 16696	⁸ Operator Name OXY USA INC.	⁹ Elevation 3797'

¹⁰ Surface Location

UL or lot no.	Section	Township	Range	Lot Idn	Feet from the	North/South line	Feet from the	East/West line	County
L 4	4	22S	32E		608	NORTH	1254	WEST	LEA

¹¹ Bottom Hole Location If Different From Surface

UL or lot no.	Section	Township	Range	Lot Idn	Feet from the	North/South line	Feet from the	East/West line	County
M	9	22S	32E		20	SOUTH	540	WEST	LEA

¹² Dedicated Acres 1279.16	¹³ Joint or Infill	¹⁴ Consolidation Code	¹⁵ Order No.
------------------------------------------	-------------------------------	----------------------------------	-------------------------

No allowable will be assigned to this completion until all interests have been consolidated or a non-standard unit has been approved by the division.

	CORNER COORDINATES NAD 83, SPCS NM EAST A - X: 742997.32' / Y: 520030.51' B - X: 745644.16' / Y: 520058.90' C - X: 745661.75' / Y: 517422.47' D - X: 745685.06' / Y: 514781.19' E - X: 745702.47' / Y: 512140.78' F - X: 745721.08' / Y: 509499.99' G - X: 743081.09' / Y: 509483.21' H - X: 740439.76' / Y: 509452.87' I - X: 740420.51' / Y: 512091.09' J - X: 740401.36' / Y: 514735.23' K - X: 740382.16' / Y: 517379.24' L - X: 740357.59' / Y: 520004.58'	CORNER COORDINATES NAD 27, SPCS NM EAST A - X: 701815.30' / Y: 519969.63' B - X: 704462.12' / Y: 519998.02' C - X: 704479.64' / Y: 517361.66' D - X: 704502.88' / Y: 514720.45' E - X: 704520.21' / Y: 512080.12' F - X: 704538.75' / Y: 509439.40' G - X: 701898.78' / Y: 509422.62' H - X: 699257.47' / Y: 509392.29' I - X: 699238.29' / Y: 512030.44' J - X: 699219.21' / Y: 514674.51' K - X: 699200.09' / Y: 517318.44' L - X: 699175.58' / Y: 519943.71'	17 OPERATOR CERTIFICATION I hereby certify that the information contained herein is true and complete to the best of my knowledge and belief, and that this organization either owns a working interest or unleased mineral interest in the land including the proposed bottom hole location or has a right to drill this well at this location pursuant to a contract with an owner of such a mineral or working interest, or to a voluntary pooling agreement or a compulsory pooling order heretofore entered by the division. Signature Date 4/13/2023 Printed Name Sarah McKinney E-mail Address Sarah_McKinney@oxy.com
	SURFACE HOLE LOCATION 608' FNL 1254' FWL, SECTION 4 NAD 83, SPCS NM EAST X: 741616.89' / Y: 519408.70' LAT: 32.42624854N / LON: 103.68423096W NAD 27, SPCS NM EAST X: 700434.86' / Y: 519347.85' LAT: 32.42612583N / LON: 103.68374199W		
	KICK OFF POINT 300' FSL 540' FWL, SECTION 33 NAD 83, SPCS NM EAST X: 740895.88' / Y: 520309.88' LAT: 32.42873757N / LON: 103.68654995W NAD 27, SPCS NM EAST X: 699713.88' / Y: 520249.01' LAT: 32.42861489N / LON: 103.68606081W		
	FIRST TAKE POINT 100' FNL 540' FWL, SECTION 4 NAD 83, SPCS NM EAST X: 740898.74' / Y: 519909.89' LAT: 32.42763809N / LON: 103.68654853W NAD 27, SPCS NM EAST X: 699716.73' / Y: 519849.03' LAT: 32.42751541N / LON: 103.68605943W		
	LAST TAKE POINT 100' FSL 540' FWL, SECTION 9 NAD 83, SPCS NM EAST X: 740979.00' / Y: 509559.07' LAT: 32.39918598N / LON: 103.68649142W NAD 27, SPCS NM EAST X: 699796.71' / Y: 509498.49' LAT: 32.39906318N / LON: 103.68600339W		
BOTTOM HOLE LOCATION 20' FSL 540' FWL, SECTION 9 NAD 83, SPCS NM EAST X: 740979.58' / Y: 509479.07' LAT: 32.39896609N / LON: 103.68649110W NAD 27, SPCS NM EAST X: 699797.29' / Y: 509418.49' LAT: 32.39884328N / LON: 103.68600308W		18 SURVEYOR CERTIFICATION I hereby certify that the well location shown on this plat was plotted from field notes of actual surveys made by me or under my supervision, and that the same is true and correct to the best of my belief. APRIL 12, 2023 Date of Survey Signature and Seal of Professional Surveyor: LLOYD P. SHORT 21653 Certificate Number	

Distances/areas relative to NAD 83 Combined Scale Factor: 0.99977749 Convergence Angle: 00°20'56.98000"

☐ Horizontal Spacing Unit

District I
1625 N. French Dr., Hobbs, NM 88240
Phone: (575) 393-6161 Fax: (575) 393-0720
District II
811 S. First St., Artesia, NM 88210
Phone: (575) 748-1283 Fax: (575) 748-9720
District III
1000 Rio Brazos Road, Aztec, NM 87410
Phone: (505) 334-6178 Fax: (505) 334-6170
District IV
1220 S. St. Francis Dr., Santa Fe, NM 87505
Phone: (505) 476-3460 Fax: (505) 476-3462

State of New Mexico
Energy, Minerals & Natural Resources Department
OIL CONSERVATION DIVISION
1220 South St. Francis Dr.
Santa Fe, NM 87505

Form C-102
Revised August 1, 2011
Submit one copy to appropriate
District Office
☐ AMENDED REPORT

WELL LOCATION AND ACREAGE DEDICATION PLAT

¹ API Number 30-025-	² Pool Code 98296	³ Pool Name WC-025 G-09 S223219D, Wolfcamp
⁴ Property Code	⁵ Property Name GOLD LOG 4_9 FED COM	⁶ Well Number 313H
⁷ OGRID No. 16696	⁸ Operator Name OXY USA INC.	⁹ Elevation 3797'

¹⁰ Surface Location

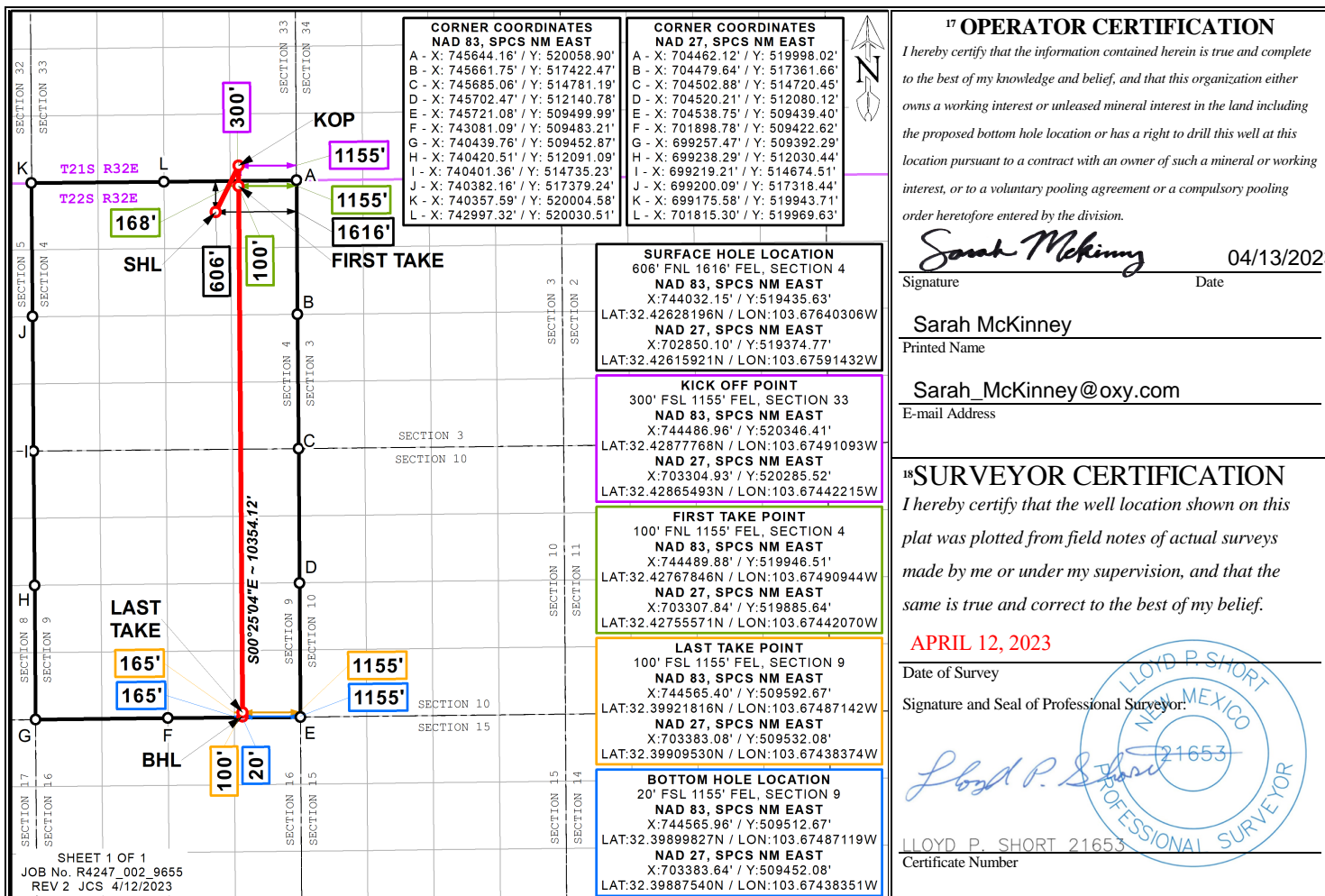
UL or lot no.	Section	Township	Range	Lot Idn	Feet from the	North/South line	Feet from the	East/West line	County
L 2	4	22S	32E		606	NORTH	1616	EAST	LEA

¹¹ Bottom Hole Location If Different From Surface

UL or lot no.	Section	Township	Range	Lot Idn	Feet from the	North/South line	Feet from the	East/West line	County
P	9	22S	32E		20	SOUTH	1155	EAST	LEA

¹² Dedicated Acres 1279.16	¹³ Joint or Infill	¹⁴ Consolidation Code	¹⁵ Order No.
------------------------------------------	-------------------------------	----------------------------------	-------------------------

No allowable will be assigned to this completion until all interests have been consolidated or a non-standard unit has been approved by the division.



Distances/areas relative to NAD 83 Combined Scale Factor: 0.99977749 Convergence Angle: 00°20'56.98000"

☐ Horizontal Spacing Unit