

**STATE OF NEW MEXICO
ENERGY, MINERALS AND NATURAL RESOURCES DEPARTMENT
OIL CONSERVATION DIVISION**

**APPLICATION OF EOG RESOURCES, INC. FOR
APPROVAL OF THE PADRON STATE BS-WC UNIT,
EDDY COUNTY, NEW MEXICO.**

CASE NO. 23794

NOTICE OF SUPPLEMENTAL EXHIBIT

EOG Resources, Inc., pursuant to the request of the Hearing Examiner at the October 6, 2023, hearing, files the attached type log as **Supplemental Exhibit B-3**. This additional exhibit identifies the top of the Bone Spring formation to the base of the Wolfcamp formation, which is the unitized interval for the proposed unit.

Respectfully submitted,

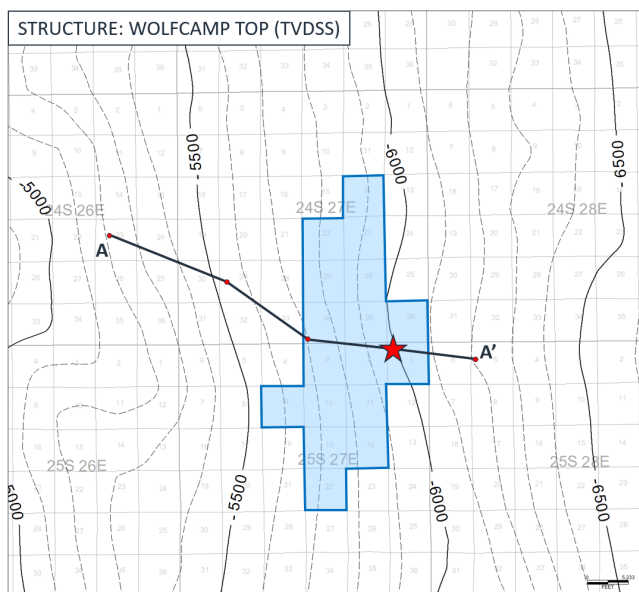
HOLLAND & HART LLP



Michael H. Feldewert
Adam G. Rankin
Paula M. Vance
Post Office Box 2208
Santa Fe, New Mexico 87504
(505) 988-4421
(505) 983-6043
mfeldewert@hollandhart.com
agrarkin@hollandhart.com
pmvance@hollandhart.com

ATTORNEYS FOR EOG RESOURCES, INC.

Representative Type Well Padron State BS-WC Unit



 **Representative Type Well Location**

 **State Unit**

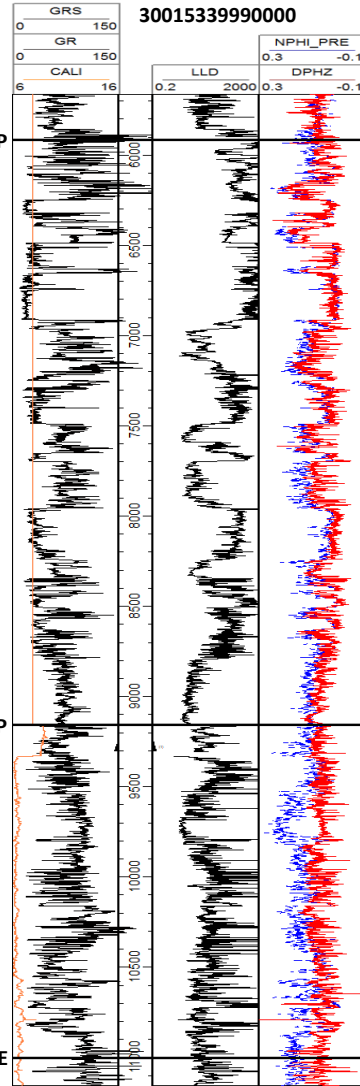
BONE SPRING BASE/WOLFCAMP TOP
(9,157' MD)

Log Acronyms:
GR/GRs: Gamma Ray
CALI: Caliper Log
LLD: Deep Resistivity
NPHI_PRE: Neutron Porosity
DPHZ: Density Porosity

WOLFCAMP BASE
(11,003' MD)



Cohiba State Unit #1
EOG Resources Inc.
30015339990000



BONE SPRING TOP
(5,913' MD)

BONE SPRING BASE/WOLFCAMP TOP
(9,157' MD)

WOLFCAMP BASE
(11,003' MD)

