

**STATE OF NEW MEXICO
DEPARTMENT OF ENERGY, MINERALS AND NATURAL RESOURCES
OIL CONSERVATION DIVISION**

**APPLICATIONS OF MARATHON OIL
PERMIAN LLC FOR COMPULSORY
POOLING AND APPROVAL OF
NON-STANDARD SPACING UNITS,
LEA COUNTY, NEW MEXICO.**

CASE NOS. 25541 - 25542

**APPLICATION OF TUMBLER OPERATING
PARTNERS, LLC FOR APPROVAL OF
NON-STANDARD UNIT AND FOR COMPULSORY
POOLING, LEA COUNTY, NEW MEXICO.**

CASE NO. 25466

**APPLICATIONS OF TUMBLER OPERATING
PARTNERS, LLC, FOR COMPULSORY POOLING,
LEA COUNTY, NEW MEXICO.**

CASE NOS. 25462 – 25465

MARATHON OIL PERMIAN LLC'S REBUTTAL EXHIBIT INDEX

| | |
|---------------------|--|
| Exhibit A-12 | Planned Surface Facility Diagram |
| Exhibit B-5 | Goliath 24 Federal Com Upper Avalon Production Data Points |
| Exhibit B-6 | Goliath 24 Federal Com Third Bone Spring Carbonate Production Data Points |
| Exhibit B-7 | Goliath 24 Federal Com Mid-Third Bone Spring Sand Production Data Points |

CERTIFICATE OF SERVICE

I hereby certify that the foregoing Rebuttal Exhibit Index was sent to the following
counsel of record on this 15th day of September, 2025.

Sharon T. Shaheen
Spencer Fane, LLP
Post Office Box 2307
Santa Fe, NM 87504-2307
(505) 986-2678
sshaheen@spencerfane.com
ec: dortiz@spencerface.com
Attorney for Tumbler Operating Partners, LLC

Jennifer Bradfute
Matthias Sayer
Bradfute Sayer, P.C.
P.O. Box 90233
Albuquerque, NM 87199
(505) 264-8740
matthias@bradfutelaw.com
jennifer@bradfutelaw.com
Attorneys for EOG Resources, Inc.

/s/ Dana S. Hardy
Dana S. Hardy

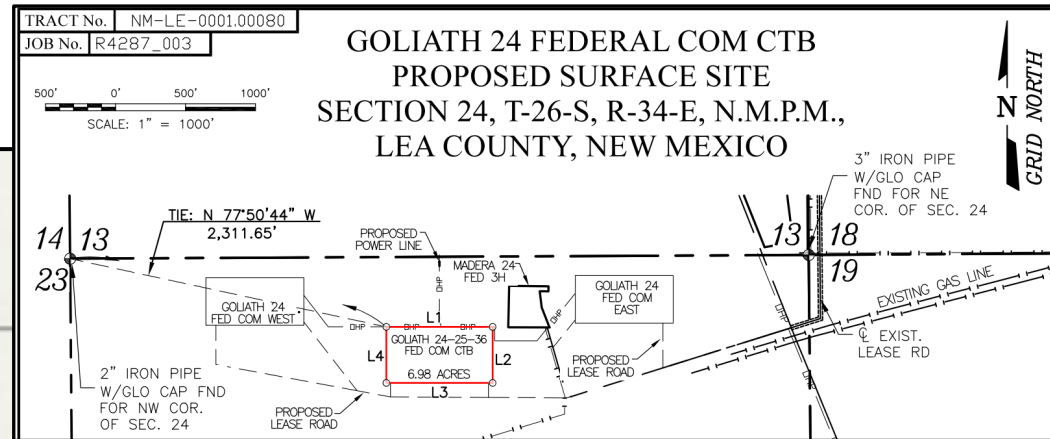
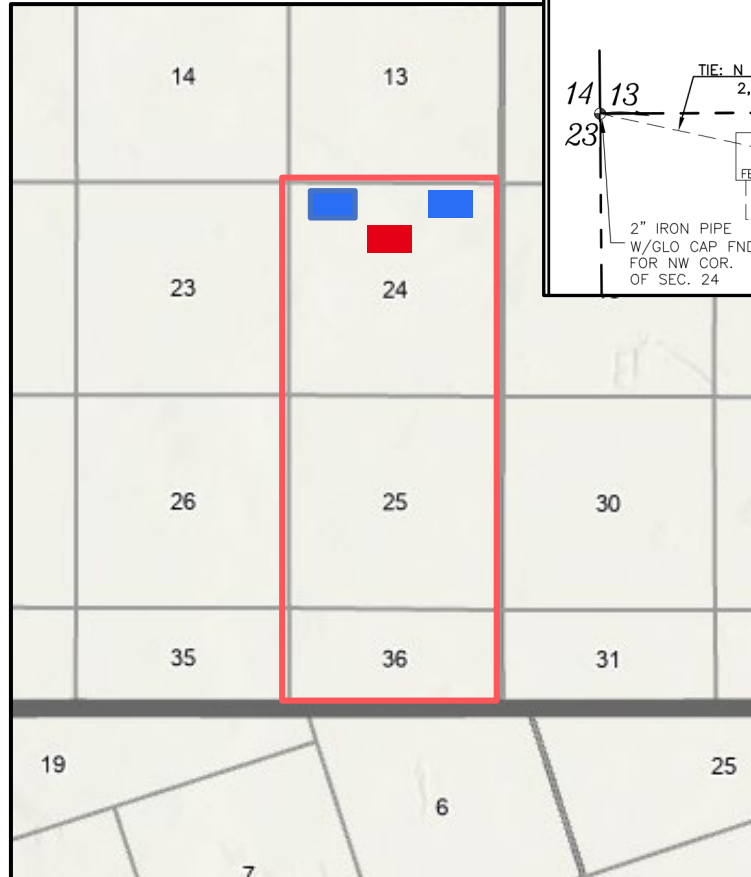
Planned Surface Facility Diagram

Sections 24, 25 and 36, T26S-R34E, Lea County, NM

MRO Well Pad & CTB location

Well Pads: 10.92 acres

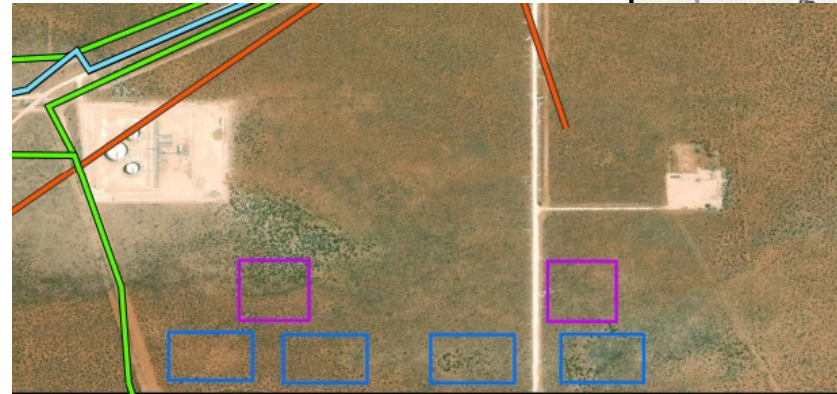
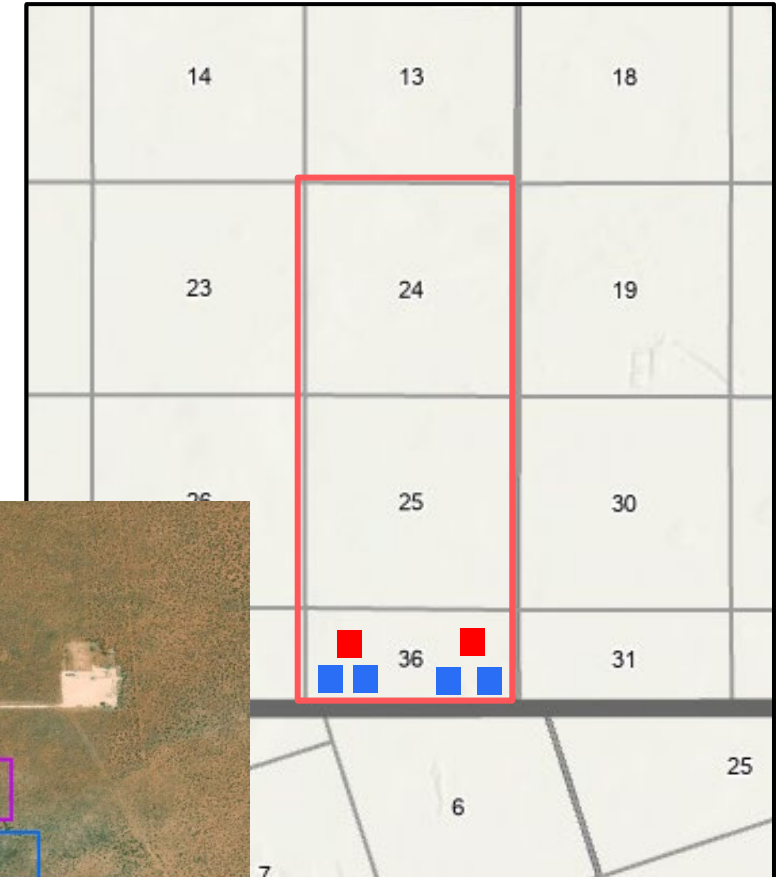
CTB: 6.98 acres



TOP Well Pad & CTB location

Well Pads: 22.04 acres

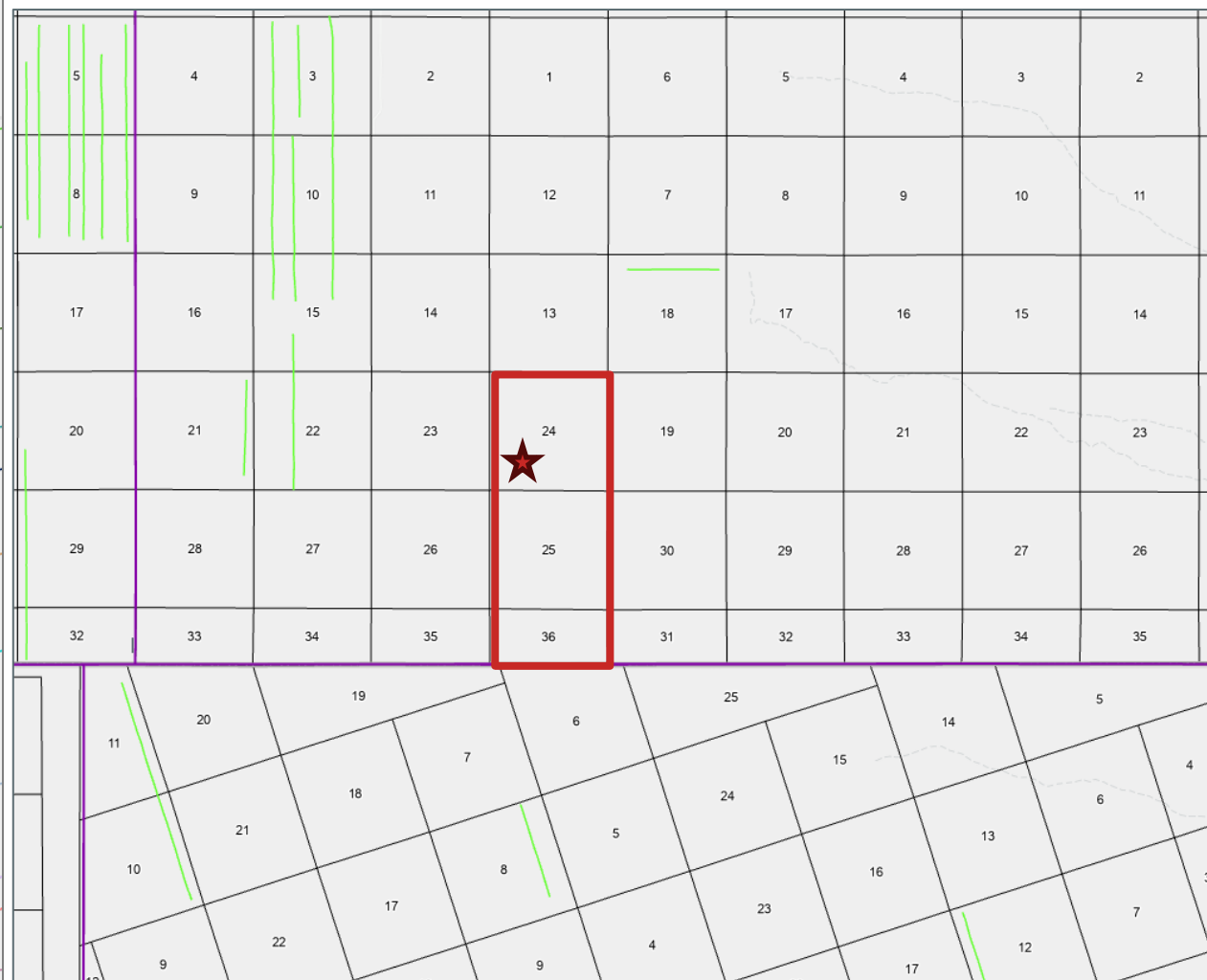
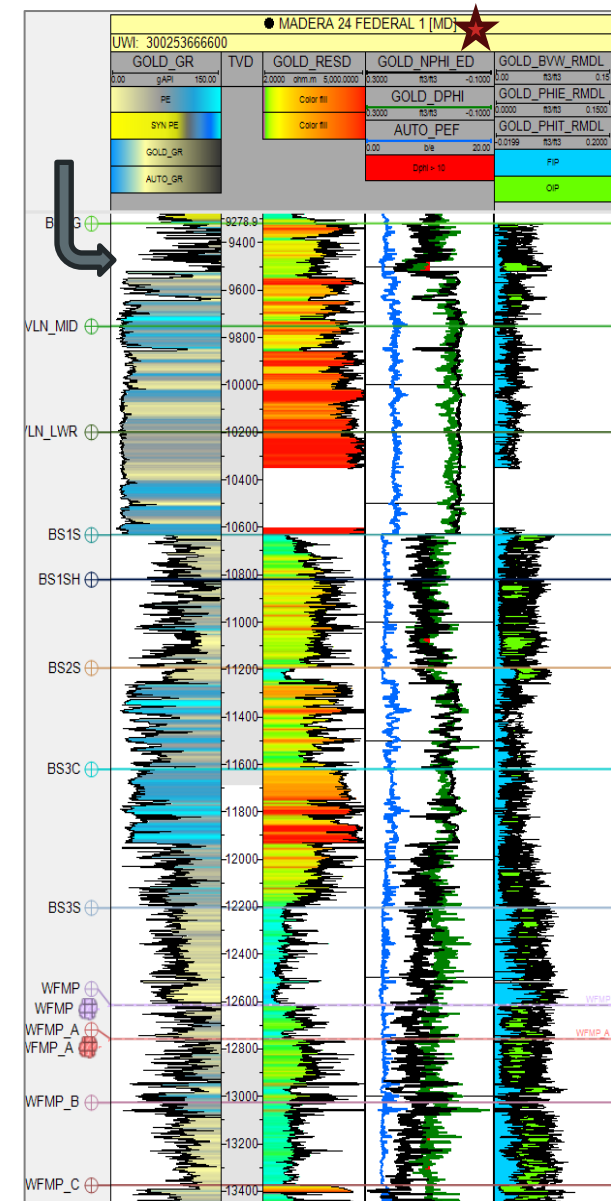
CTBs: 11.48 acres



Goliath 24 Federal Com Upper Avalon PDPs

Case Nos. 25541 - 25542

Exhibit B-5

Map Legend

Goliath DSU

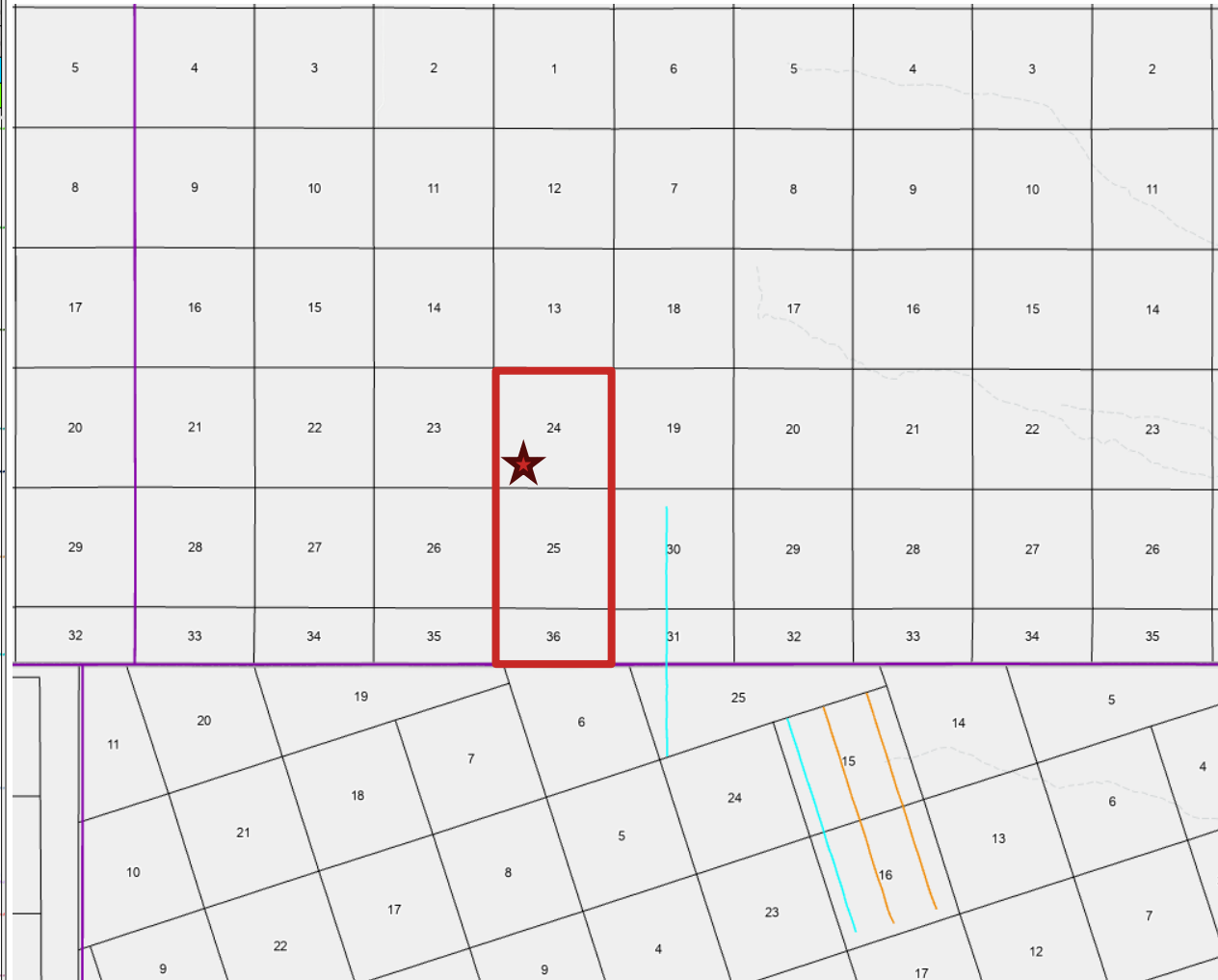
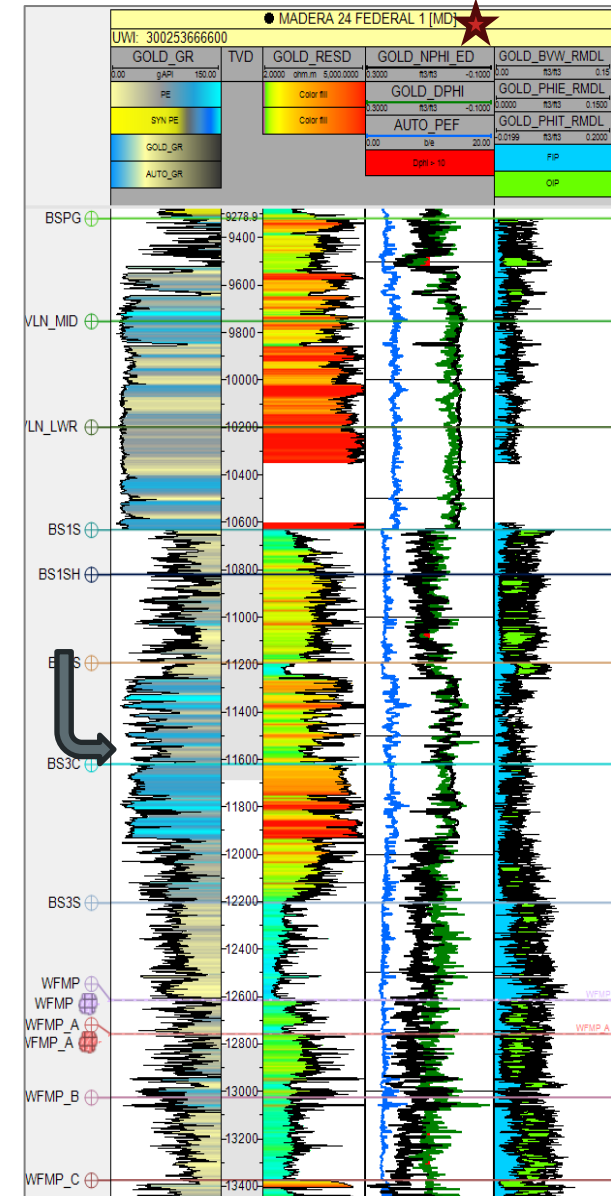


Producing Upper Avalon Wells

Limited Upper Avalon
PDPs in the area.




High potential for H₂S
(sour gas)

Exploration play

Goliath 24 Federal Com 3rd Bone Carb PDPs

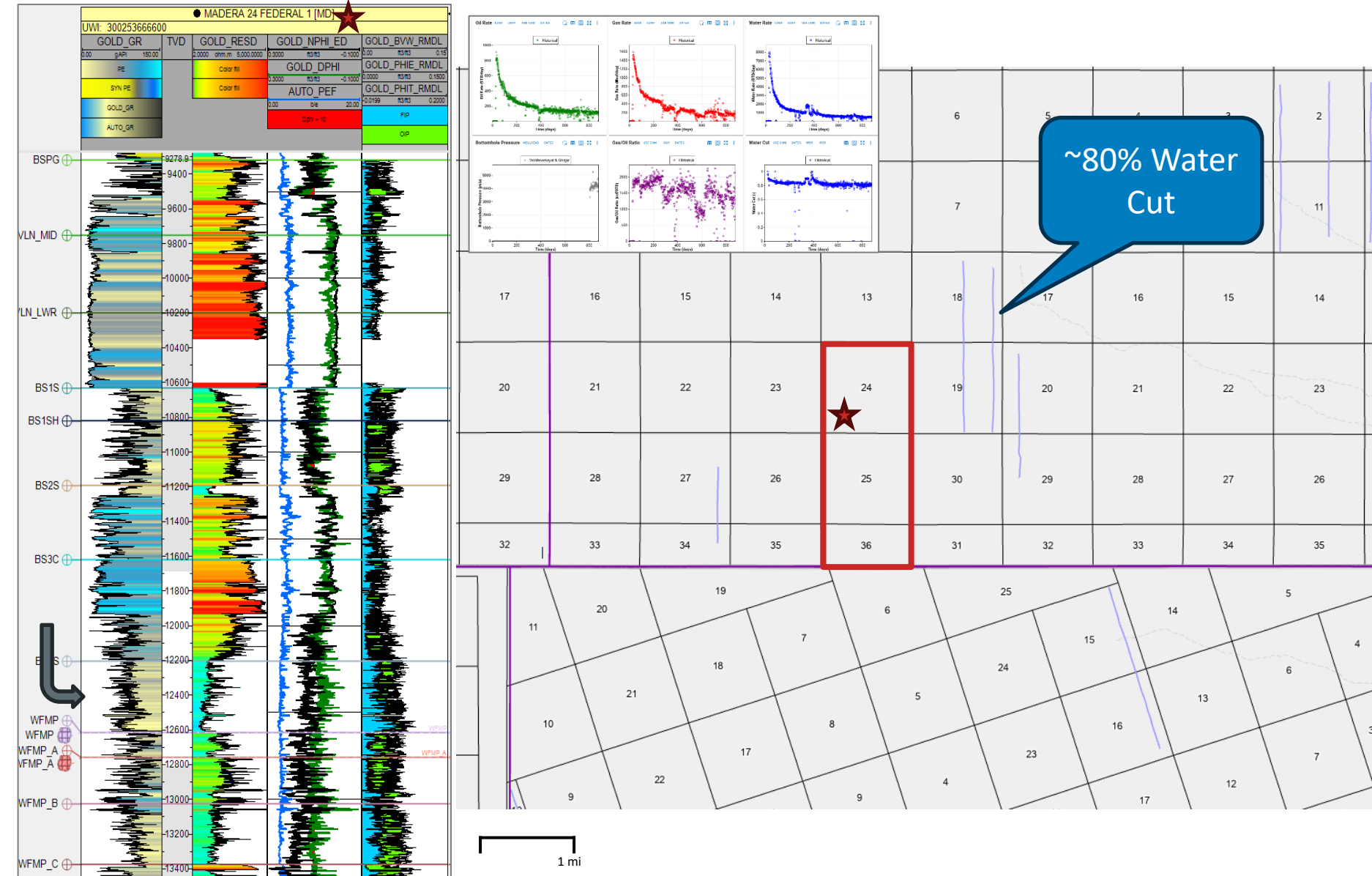
1 mi

Map Legend

-  Goliath DSU
-  Producing 3rd Bone Carb Wells
-  Producing Lwr 2nd BS Sand Wells

Limited 3rd Bone Carb PDPs in the area.

Exploration play

Goliath 24 Federal Com mid 3rd Bone Sand PDPs

Map Legend



Goliath DSU

Producing mid 3rd Bone Sand Wells

Limited 3rd Bone Sand
PDPs in the area.

Saturations show high S_w

High Water Cut

