

2/25/2026

**2026 PLAN OF DEVELOPMENT
NORTHEAST BLANCO UNIT
SAN JUAN and RIO ARRIBA COUNTIES, NEW MEXICO**

Previous Year Operations:

Drilling: SIMCOE LLC (“SIMCOE”) drilled and completed the following wells:

Well Name	API	Surface Location	Bottomhole Location	Formation	First Prod
NORTHEAST BLANCO UNIT 602 #002H	3004538325	NWNW SEC. 12, T31N-R07W	SESE SEC. 6, T31N-R06W	Mancos	9/2025
NORTHEAST BLANCO UNIT 602 #004H	3004538314	NWNW SEC. 12, T31N-R07W	NESE SEC. 6, T31N-R06W	Mancos	9/2025
NORTHEAST BLANCO UNIT 604 #004H	3004538359	SWNW SEC. 13, T31N-R07W	NWNW SEC. 16, T31N-R07W	Mancos	10/2025
NORTHEAST BLANCO UNIT 604 #006H	3004538357	SWNW SEC. 13, T31N-R07W	SWNW SEC. 16, T31N-R07W	Mancos	10/2025
NORTHEAST BLANCO UNIT 604 #008H	3004538355	SWNW SEC. 13, T31N-R07W	SWSW SEC. 16, T31N-R07W	Mancos	10/2025

Recompletions: SIMCOE did not recomplete any wells.

Plug Back: SIMCOE TA'd / Plugged Back the following well completion:

Well Name / Project	API	Well Surface Location	Formation
NORTHEAST BLANCO UNIT 247	3004534319	NWNW SEC. 20, T31N, R06W	Pictured Cliffs

Conversions: SIMCOE did not convert any wells.

Plug & Abandonment: SIMCOE did not Permanently Plug and Abandon any wells.

Repairs and Maintenance: SIMCOE completed the following well projects:

Well Name/Project	API No	Legal Location (Surface)	Producing Formation
NEBU 461A-FC: Rod Pump Repair	3004532374	NWNW SEC. 12, T30N, R08W	FRUITLAND COAL
NEBU 484-FC: Rod Pump Repair	3004527549	NWNW SEC. 16, T31N, R07W	FRUITLAND COAL
NEBU 413R-FC: Rod Pump Repair	3003924946	NWNW SEC. 20, T30N, R07W	FRUITLAND COAL
NEBU 407-FC: Rod Pump Repair	3003924217	NWNW SEC. 21, T30N, R07W	FRUITLAND COAL
NEBU 466-FC: Rod Pump Repair	3004527721	NWNE SEC. 34, T31N, R07W	FRUITLAND COAL
NEBU 015A-MV: Tubing Repair	3003923686	NWNW SEC. 2, T30N, R07W	MESAVERDE
NEBU 247-PC: Wellhead Repair	3004534319	NWNW SEC. 20, T31N, R06W	PICTURED CLIFFS
NEBU 436A-FC: Rod Pump Repair	3004532321	SWNW SEC. 19, T31N, R06W	FRUITLAND COAL
NEBU 419A-FC: Rod Pump Repair	3003930308	SWNW SEC. 3, T30N, R07W	FRUITLAND COAL
NEBU 257H-PC: Rod Pump Repair	3004534650	SWNW SEC. 35, T31N, R07W	PICTURED CLIFFS
NEBU 324-DK/MV: Surveillance	3004531133	SENE SEC. 14, T31N, R07W	DAKOTA / MESAVERDE
NEBU 324-DK/MV: Surveillance	3004531133	SENE SEC. 14, T31N, R07W	DAKOTA / MESAVERDE
NEBU 006A-MV/PC: Tubing Repair	3003922029	SENE SEC. 29, T30N, R07W	MESAVERDE / PICTURED CLIFFS
NEBU 450A-FC: Rod Pump Repair	3004533273	SENE SEC. 32, T31N, R07W	FRUITLAND COAL

NEBU 436-FC: Rod Pump Repair	3004527510	SWNE SEC. 19, T31N, R06W	FRUITLAND COAL
NEBU 403R-FC: Rod Pump Repair	3003924785	SWNE SEC. 9, T30N, R07W	FRUITLAND COAL
NEBU 061A-DK/MV: Tubing Repair	3004531272	SENE SEC. 19, T31N, R06W	DAKOTA / MESAVERDE
NEBU 052A-DK/MV: Surveillance	3004529859	NESE SEC. 15, T31N, R07W	DAKOTA / MESAVERDE
NEBU 052A-DK/MV: Surveillance	3004529859	NESE SEC. 15, T31N, R07W	DAKOTA / MESAVERDE
NEBU 007A-MV: Casing Inspection	3003922028	NESE SEC. 21, T30N, R07W	MESAVERDE
NEBU 007A-MV: Casing Inspection	3003922028	NESE SEC. 21, T30N, R07W	MESAVERDE
NEBU 410A-FC: Tubing Repair	3004531367	NESE SEC. 9, T31N, R07W	FRUITLAND COAL
NEBU 411A-FC: Rod Pump Repair	3003927702	NWSE SEC. 10, T30N, R07W	FRUITLAND COAL
NEBU 101A-MV: Tubing Repair	3003921725	NWSE SEC. 10, T30N, R07W	MESAVERDE
NEBU 312-DK/MV: Surveillance	3004530284	NWSE SEC. 14, T31N, R07W	DAKOTA / MESAVERDE
NEBU 312-DK/MV: Surveillance	3004530284	NWSE SEC. 14, T31N, R07W	DAKOTA / MESAVERDE
NEBU 485A-FC: Rod Pump Repair	3003930511	NWSE SEC. 3, T30N, R07W	FRUITLAND COAL
NEBU 435-FC: Rod Pump Repair	3004527184	NESW SEC. 1, T30N, R08W	FRUITLAND COAL
NEBU 475-FC: Rod Pump Repair	3003925049	NESW SEC. 20, T30N, R07W	FRUITLAND COAL
NEBU 475-FC: Rod Pump Repair	3003925049	NESW SEC. 20, T30N, R07W	FRUITLAND COAL
NEBU 324M-DK/MV: Surveillance	3004532376	NWSW SEC. 14, T31N, R07W	DAKOTA / MESAVERDE
NEBU 324M-DK/MV: Surveillance	3004532376	NWSW SEC. 14, T31N, R07W	DAKOTA / MESAVERDE
NEBU 495-FC: Rod Pump Repair	3003924621	NWSW SEC. 30, T31N, R06W	FRUITLAND COAL
NEBU 451A-FC: Rod Pump Repair	3004533670	NWSW SEC. 5, T30N, R07W	FRUITLAND COAL
NEBU 439-FC: Tubing Repair	3004527147	SWSW SEC. 13, T30N, R08W	FRUITLAND COAL
NEBU 102-MV: Tubing Repair	3003909807	SWSW SEC. 3, T30N, R07W	MESAVERDE
NEBU 063M-MV/PC: Tubing Repair	3004533476	SWSE SEC. 1, T31N, R07W	MESAVERDE / PICTURED CLIFFS
NEBU 058M-DK/MV: Clean out	3004530283	SWSE SEC. 13, T31N, R07W	DAKOTA / MESAVERDE
NEBU 431-FC: Rod Pump Repair	3003924339	SWSE SEC. 17, T30N, R07W	FRUITLAND COAL
NEBU 464A-FC: Rod Pump Repair	3004531363	SESE SEC. 10, T31N, R07W	FRUITLAND COAL
NEBU 320M-DK/MV: Surveillance	3004531159	SESE SEC. 6, T31N, R06W	DAKOTA / MESAVERDE
NEBU 320M-DK/MV: Surveillance	3004531159	SESE SEC. 6, T31N, R06W	DAKOTA / MESAVERDE

Participating Areas

Paying Well Determination: SIMCOE did not submit any wells for Paying Well Determination.

PA Application submitted or approved: SIMCOE did not submit any PA Applications.

Other: any surface disturbing activities completed: SIMCOE did not create any new surface disturbances.

Planned Year Operations:

Drilling: SIMCOE anticipates the following drilling projects:

Well Name	API	Surface Location	First Take Point	Bottomhole Location	Target Formation	Status
NORTHEAST BLANCO UNIT 604 7H	3004538356	SWNW Sec. 13, T31N-R07W	NESE Sec. 14, T31N-R07W	NWSW Sec. 16, T31N-R07W	Mancos	APD Approved
NORTHEAST BLANCO UNIT 604 9H	3004538354	SWNW Sec. 13, T31N-R07W	SWSW Sec. 13, T31N-R07W	SESE Sec. 18, T31N-R06W	Mancos	APD Approved
NORTHEAST BLANCO UNIT 605 3H	3004538455	SESE Sec. 11, T31N-R07W	NWSE Sec. 11, T31N-R07W	NWSW Sec. 9, T31N-R07W	Mancos	APD Approved
NORTHEAST BLANCO UNIT 605 5H	3004538457	SESE Sec. 11, T31N-R07W	SWSE Sec. 11, T31N-R07W	SWSW Sec. 9, T31N-R07W	Mancos	APD Approved

Recompletions: SIMCOE does not anticipate any recompletion projects.

Plug Back: SIMCOE does not anticipate any plug-back/TA projects.

Conversions: SIMCOE does not anticipate any conversion projects.

Plug & Abandonment: SIMCOE anticipates to permanently plug and abandon the following well:

Well Name / Project	API	Well Surface Location
NORTHEAST BLANCO UNIT 408A	3004532372	SESE SEC. 20, T31N, R07W

Participating Areas (“PAs”)

Paying Well Determination planned: SIMCOE will be submitting the five NEBU Horizontal Mancos wells that were drilled in 2025 (see Previous Year Operations) for Paying Determination once 6 months of production data is available.

PA Application submitted or approved: Should the above referenced new drills submitted for Paying Determination be approved as Paying wells, SIMCOE will submit applications for the 1st and 2nd PA expansions of the NEBU Mancos PA.

Other: any surface disturbing activities completed: SIMCOE anticipates no new surface disturbances. The planned New Drills will be utilizing existing well pads.

Water Use:

Fresh Water from Navajo Reservoir

NEBU 605 #003H (2.5 mile lateral length) D&C: 765,000 bbls
 NEBU 605 #005H (2.5 mile lateral length) D&C: 765,000 bbls
 NEBU 604 #009H (2 mile lateral length) D&C: 615,000 bbls
 NEBU 604 #007H (3 mile lateral length) D&C: 915,000 bbls

Total Water Req'd: 3,060,000 bbls

Fresh Water Storage

Description: Drilling & Completion: Temporary above-ground, large capacity storage tanks (MLVT – modular large volume tank) on each completion location/pad.

Water Transfer: Drilling & Completion: To occur from Navajo Reservoir “point of diversion” to drilling & completion locations/pads using high volume water transfer pumps, existing 16” poly line, and depending on the type of activity a temporary lay-flat line ranging from 8-16”.

Produced Water

Flowback: 5 wells at roughly 20,000 bbls/well = 100,000 bbls

Total: 100,000 bbls

Disposal: Flowback water disposed into existing SIMCOE Middle Mesa water disposal system; no produced water to be used in operations.

SWD WELLS (WIW)

WELL NAME	API NO	LEGAL DESC	STATUS – TOTAL ANNUAL
NORTHEAST BLANCO UNIT MIDDLE MESA SWD #1	3004528553	SWNE SEC 32-T31N-R07W	Disposed 121,404 bbls. The average daily volume is 333 bbls. Water is both piped and trucked to the facility.
NORTHEAST BLANCO UNIT MIDDLE MESA SWD #2	3004527341	SWSW SEC 11-T31N-R07W	Disposed 349,773 bbls. The average daily volume is 956 bbls. Water is both piped and trucked to the facility.
NORTHEAST BLANCO UNIT PUMP MESA SWD #1	3004527340	SESW SEC 36-T31N-R08W	Disposed 242,671 bbls. The average daily volume is 666 bbls. Water is both piped and trucked to the facility.
NORTHEAST BLANCO UNIT SIMS MESA SWD #1	3003924236	SWNW SEC 10-T30N-R07W	Disposed 19,319 bbls. The average daily volume is 53 bbls. Water is both piped and trucked to the facility.
LA JARA TRANSFER			Disposed 8,939 bbls. The average daily volume is 24 bbls. Water is piped to the facility.

SUMMARY OF PLANNED YEAR OPERATIONS AND OTHER INFORMATION:

- As to the planned 4 NEBU Mancos New Drills to be drilled from the existing 604 and 605 well pads, SIMCOE plans to drill the NEBU 604 #9H and #7H wells in the 2nd Qtr of 2026 and the NEBU 605 #3H and #5H wells in the 3rd Qtr of 2026.

STATUS OF WELLS – “Unit” Wells

PROD = PRODUCING, SI = SHUT IN, TA ZONE = TEMPORARILY ABANDONED ZONE. Note that P&A wells are excluded from this list.

Well Name Number	Reservoir	API	Reservoir Prod Status	Well Status	SF Section	SF Township	SF Range	SF Qtr Qtr	PA/CA/Lease	Regulatory Reporting
NORTHEAST BLANCO UNIT 006	MESAVERDE	3003907770	PROD	PROD	29	30N	7W	SENE	MV PA - NMNM 078402A	8920009290
NORTHEAST BLANCO UNIT 034	MESAVERDE	3003907785	PROD	PROD	19	30N	7W	SESW	MV PA - NMNM 078402A	8920009290
NORTHEAST BLANCO UNIT 004	MESAVERDE	3003907787	PROD	PROD	21	30N	7W	SWSW	MV PA - NMNM 078402A	8920009290
NORTHEAST BLANCO UNIT 035	MESAVERDE	3003907795	PROD	PROD	19	30N	7W	NWSE	MV PA - NMNM 078402A	8920009290
NORTHEAST BLANCO UNIT 013	MESAVERDE	3003907802	PROD	PROD	20	30N	7W	NESW	MV PA - NMNM 078402A	8920009290
NORTHEAST BLANCO UNIT 019	MESAVERDE	3003907819	PROD	PROD	20	30N	7W	NWNE	MV PA - NMNM 078402A	8920009290
NORTHEAST BLANCO UNIT 010	MESAVERDE	3003907830	PROD	PROD	16	30N	7W	SWSW	MV PA - NMNM 078402A	8920009290
NORTHEAST BLANCO UNIT 025	MESAVERDE	3003907863	PROD	PROD	17	30N	7W	NWNE	MV PA - NMNM 078402A	8920009290
NORTHEAST BLANCO UNIT 026	MESAVERDE	3003907871	PROD	PROD	8	30N	7W	SESW	MV PA - NMNM 078402A	8920009290
NORTHEAST BLANCO UNIT 008	MESAVERDE	3003907880	PROD	PROD	10	30N	7W	NESW	MV PA - NMNM 078402A	8920009290
NORTHEAST BLANCO UNIT 017	MESAVERDE	3003907881	PROD	PROD	9	30N	7W	NWSW	MV PA - NMNM 078402A	8920009290
NORTHEAST BLANCO UNIT 018	MESAVERDE	3003907888	PROD	PROD	9	30N	7W	SENE	MV PA - NMNM 078402A	8920009290
NORTHEAST BLANCO UNIT 101	MESAVERDE	3003907893	PROD	PROD	10	30N	7W	NWNE	MV PA - NMNM 078402A	8920009290
NORTHEAST BLANCO UNIT 027	MESAVERDE	3003907897	PROD	PROD	8	30N	7W	NENE	MV PA - NMNM 078402A	8920009290
NORTHEAST BLANCO UNIT 015	MESAVERDE	3003907913	PROD	PROD	2	30N	7W	NWSW	MV PA - NMNM 078402A	8920009290
NORTHEAST BLANCO UNIT 014	MESAVERDE	3003907919	PROD	PROD	2	30N	7W	SWNE	MV PA - NMNM 078402A	8920009290
NORTHEAST BLANCO UNIT 028	MESAVERDE	3003907930	PROD	PROD	34	31N	7W	SWSE	MV PA - NMNM 078402A	8920009290
NORTHEAST BLANCO UNIT 011	MESAVERDE	3003907947	PROD	PROD	25	31N	7W	SENE	MV PA - NMNM 078402A	8920009290
NORTHEAST BLANCO UNIT 102	MESAVERDE	3003909807	PROD	PROD	3	30N	7W	SWSW	MV PA - NMNM 078402A	8920009290
NORTHEAST BLANCO UNIT 062	MESAVERDE	3003918243	PROD	PROD	30	31N	6W	NWSW	MV PA - NMNM 078402A	8920009290
NORTHEAST BLANCO UNIT 022A	MESAVERDE	3003921409	PROD	PROD	36	31N	7W	SWSE	MV PA - NMNM 078402A	8920009290
NORTHEAST BLANCO UNIT 027A	MESAVERDE	3003921694	PROD	PROD	8	30N	7W	SESE	MV PA - NMNM 078402A	8920009290
NORTHEAST BLANCO UNIT 017A	MESAVERDE	3003921695	PROD	PROD	9	30N	7W	SWNW	MV PA - NMNM 078402A	8920009290
NORTHEAST BLANCO UNIT 018A	MESAVERDE	3003921696	PROD	PROD	9	30N	7W	SWSE	MV PA - NMNM 078402A	8920009290
NORTHEAST BLANCO UNIT 024A	MESAVERDE	3003921697	PROD	PROD	17	30N	7W	NESE	MV PA - NMNM 078402A	8920009290
NORTHEAST BLANCO UNIT 004A	MESAVERDE	3003921698	PROD	PROD	21	30N	7W	NWNW	MV PA - NMNM 078402A	8920009290
NORTHEAST BLANCO UNIT 016A	MESAVERDE	3003921722	PROD	PROD	3	30N	7W	NWSE	MV PA - NMNM 078402A	8920009290

NORTHEAST BLANCO UNIT 044A	MESAVERDE	3003921723	PROD	PROD	4	30N	7W	SESE	MV PA - NMNM 078402A	8920009290
NORTHEAST BLANCO UNIT 008A	MESAVERDE	3003921724	PROD	PROD	10	30N	7W	NWNW	MV PA - NMNM 078402A	8920009290
NORTHEAST BLANCO UNIT 101A	MESAVERDE	3003921725	PROD	PROD	10	30N	7W	NWSE	MV PA - NMNM 078402A	8920009290
NORTHEAST BLANCO UNIT 102A	MESAVERDE	3003921736	PROD	PROD	3	30N	7W	SESW	MV PA - NMNM 078402A	8920009290
NORTHEAST BLANCO UNIT 010A	MESAVERDE	3003921748	PROD	PROD	16	30N	7W	NWNW	MV PA - NMNM 078402A	8920009290
NORTHEAST BLANCO UNIT 019A	MESAVERDE	3003922027	PROD	PROD	20	30N	7W	SESE	MV PA - NMNM 078402A	8920009290
NORTHEAST BLANCO UNIT 007A	MESAVERDE	3003922028	PROD	PROD	21	30N	7W	NESE	MV PA - NMNM 078402A	8920009290
NORTHEAST BLANCO UNIT 006A	MESAVERDE	3003922029	PROD	PROD	29	30N	7W	SESW	MV PA - NMNM 078402A	8920009290
NORTHEAST BLANCO UNIT 006A	PICTURED CLIFFS	3003922029	PROD	PROD	29	30N	7W	SESW	Lease: NMSF 079060	820790600
NORTHEAST BLANCO UNIT 014A	MESAVERDE	3003922084	PROD	PROD	2	30N	7W	NESE	MV PA - NMNM 078402A	8920009290
NORTHEAST BLANCO UNIT 013A	MESAVERDE	3003922472	PROD	PROD	20	30N	7W	NENW	MV PA - NMNM 078402A	8920009290
NORTHEAST BLANCO UNIT 024R	MESAVERDE	3003922564	PROD	PROD	17	30N	7W	SWSE	MV PA - NMNM 078402A	8920009290
NORTHEAST BLANCO UNIT 302	DAKOTA	3003923560	PROD	PROD	30	31N	6W	NESE	DK PA - NMNM 078402C	892000929C
NORTHEAST BLANCO UNIT 302	GALLUP	3003923560	PROD	PROD	30	31N	6W	NESE	Lease: NMNM 03357	290033570
NORTHEAST BLANCO UNIT 303	DAKOTA	3003923568	PROD	PROD	20	31N	6W	SESE	DK PA - NMNM 078402C	892000929C
NORTHEAST BLANCO UNIT 303	MESAVERDE	3003923568	PROD	PROD	20	31N	6W	SESE	MV PA - NMNM 078402A	8920009290
NORTHEAST BLANCO UNIT 303	GALLUP	3003923568	PROD	PROD	20	31N	6W	SESE	Lease: NMSF 078988	820789880
NORTHEAST BLANCO UNIT 015A	MESAVERDE	3003923686	PROD	PROD	2	30N	7W	NWNW	MV PA - NMNM 078402A	8920009290
NORTHEAST BLANCO UNIT 007R	MESAVERDE	3003923759	PROD	PROD	21	30N	7W	NWNE	MV PA - NMNM 078402A	8920009290
NORTHEAST BLANCO UNIT 304	DAKOTA	3003924163	PROD	PROD	30	31N	6W	SWSW	DK PA - NMNM 078402C	892000929C
NORTHEAST BLANCO UNIT 304	PICTURED CLIFFS	3003924163	PROD	PROD	30	31N	6W	SWSW	PC PA - NMNM 078402B	892000929A
NORTHEAST BLANCO UNIT 401	FRUITLAND COAL	3003924214	PROD	PROD	9	30N	7W	NWSW	FC PA - NMNM 078402D	892000929B
NORTHEAST BLANCO UNIT 409	FRUITLAND COAL	3003924215	PROD	PROD	10	30N	7W	SESW	FC PA - NMNM 078402D	892000929B
NORTHEAST BLANCO UNIT 407	FRUITLAND COAL	3003924217	PROD	PROD	21	30N	7W	NENE	FC PA - NMNM 078402D	892000929B
NORTHEAST BLANCO UNIT 415	FRUITLAND COAL	3003924320	PROD	PROD	2	30N	7W	SWNE	FC PA - NMNM 078402D	892000929B
NORTHEAST BLANCO UNIT 417	FRUITLAND COAL	3003924321	PROD	PROD	2	30N	7W	SWSW	FC PA - NMNM 078402D	892000929B
NORTHEAST BLANCO UNIT 431	FRUITLAND COAL	3003924339	PROD	PROD	17	30N	7W	SWSE	FC PA - NMNM 078402D	892000929B
NORTHEAST BLANCO UNIT 433	FRUITLAND COAL	3003924353	PROD	PROD	19	30N	7W	SESW	FC PA - NMNM 078402D	892000929B
NORTHEAST BLANCO UNIT 419	FRUITLAND COAL	3003924355	PROD	PROD	3	30N	7W	SESW	FC PA - NMNM 078402D	892000929B
NORTHEAST BLANCO UNIT 411	FRUITLAND COAL	3003924365	PROD	PROD	10	30N	7W	SWNE	FC PA - NMNM 078402D	892000929B

NORTHEAST BLANCO UNIT 483	FRUITLAND COAL	3003924399	PROD	PROD	36	31N	7W	SWNE	FC PA - NMNM 078402D	892000929B
NORTHEAST BLANCO UNIT 481	FRUITLAND COAL	3003924400	PROD	PROD	36	31N	7W	SESW	FC PA - NMNM 078402D	892000929B
NORTHEAST BLANCO UNIT 477	FRUITLAND COAL	3003924448	TA ZONE	PROD	29	30N	7W	SENE	FC PA - NMNM 078402D	892000929B
NORTHEAST BLANCO UNIT 405	PICTURED CLIFFS	3003924491	PROD	PROD	21	30N	7W	SWSW	PC PA - NMNM 078402B	892000929A
NORTHEAST BLANCO UNIT 485	FRUITLAND COAL	3003924594	PROD	PROD	3	30N	7W	NENE	FC PA - NMNM 078402D	892000929B
NORTHEAST BLANCO UNIT 493	FRUITLAND COAL	3003924620	PROD	PROD	25	31N	7W	SENE	FC PA - NMNM 078402D	892000929B
NORTHEAST BLANCO UNIT 495	FRUITLAND COAL	3003924621	PROD	PROD	30	31N	6W	NWSW	FC PA - NMNM 078402D	892000929B
NORTHEAST BLANCO UNIT 497	FRUITLAND COAL	3003924625	PROD	PROD	30	31N	6W	SENE	FC PA - NMNM 078402D	892000929B
NORTHEAST BLANCO UNIT 421R	FRUITLAND COAL	3003924641	PROD	PROD	4	30N	7W	SESE	FC PA - NMNM 078402D	892000929B
NORTHEAST BLANCO UNIT 491	FRUITLAND COAL	3003924659	PROD	PROD	25	31N	7W	NWSE	FC PA - NMNM 078402D	892000929B
NORTHEAST BLANCO UNIT 425R	FRUITLAND COAL	3003924698	PROD	PROD	8	30N	7W	SESW	FC PA - NMNM 078402D	892000929B
NORTHEAST BLANCO UNIT 499	FRUITLAND COAL	3003924733	PROD	PROD	20	31N	6W	SESE	FC PA - NMNM 078402D	892000929B
NORTHEAST BLANCO UNIT 403R	FRUITLAND COAL	3003924785	PROD	PROD	9	30N	7W	SWNE	FC PA - NMNM 078402D	892000929B
NORTHEAST BLANCO UNIT 427R	FRUITLAND COAL	3003924795	PROD	PROD	16	30N	7W	SWSW	FC PA - NMNM 078402D	892000929B
NORTHEAST BLANCO UNIT 429R	FRUITLAND COAL	3003924878	PROD	PROD	17	30N	7W	NWNE	FC PA - NMNM 078402D	892000929B
NORTHEAST BLANCO UNIT 413R	FRUITLAND COAL	3003924946	PROD	PROD	20	30N	7W	NENE	FC PA - NMNM 078402D	892000929B
NORTHEAST BLANCO UNIT 423R	FRUITLAND COAL	3003925016	PROD	PROD	8	30N	7W	NWSE	FC PA - NMNM 078402D	892000929B
NORTHEAST BLANCO UNIT 475	FRUITLAND COAL	3003925049	PROD	PROD	20	30N	7W	NESW	FC PA - NMNM 078402D	892000929B
NORTHEAST BLANCO UNIT 505	FRUITLAND COAL	3003925177	PROD	PROD	21	30N	7W	NENW	FC PA - NMNM 078402D	892000929B
NORTHEAST BLANCO UNIT 479R	FRUITLAND COAL	3003925315	PROD	PROD	20	30N	7W	NENW	FC PA - NMNM 078402D	892000929B
NORTHEAST BLANCO UNIT 302E	DAKOTA	3003927051	PROD	PROD	30	31N	6W	SWNE	DK PA - NMNM 078402C	892000929C
NORTHEAST BLANCO UNIT 302E	MESAVERDE	3003927051	PROD	PROD	30	31N	6W	SWNE	MV PA - NMNM 078402A	8920009290
NORTHEAST BLANCO UNIT 413A	FRUITLAND COAL	3003927299	PROD	PROD	20	30N	7W	SESE	FC PA - NMNM 078402D	892000929B
NORTHEAST BLANCO UNIT 407A	FRUITLAND COAL	3003927301	PROD	PROD	21	30N	7W	NESE	FC PA - NMNM 078402D	892000929B
NORTHEAST BLANCO UNIT 011A	DAKOTA	3003927416	PROD	PROD	25	31N	7W	SESE	DK PA - NMNM 078402C	892000929C
NORTHEAST BLANCO UNIT 011A	MESAVERDE	3003927416	PROD	PROD	25	31N	7W	SESE	MV PA - NMNM 078402A	8920009290
NORTHEAST BLANCO UNIT 497A	FRUITLAND COAL	3003927444	PROD	PROD	30	31N	6W	NESE	FC PA - NMNM 078402D	892000929B
NORTHEAST BLANCO UNIT 499A	FRUITLAND COAL	3003927445	PROD	PROD	20	31N	6W	NWSE	FC PA - NMNM 078402D	892000929B
NORTHEAST BLANCO UNIT 304E	DAKOTA	3003927446	PROD	PROD	30	31N	6W	SWNW	DK PA - NMNM 078402C	892000929C
NORTHEAST BLANCO UNIT 304E	MESAVERDE	3003927446	PROD	PROD	30	31N	6W	SWNW	MV PA - NMNM 078402A	8920009290

NORTHEAST BLANCO UNIT 303E	DAKOTA	3003927447	PROD	PROD	20	31N	6W	NWSE	DK PA - NMNM 078402C	892000929C
NORTHEAST BLANCO UNIT 303E	MESAVERDE	3003927447	PROD	PROD	20	31N	6W	NWSE	MV PA - NMNM 078402A	8920009290
NORTHEAST BLANCO UNIT 068A	MESAVERDE	3003927448	PROD	PROD	2	30N	7W	NENE	MV PA - NMNM 078402A	8920009290
NORTHEAST BLANCO UNIT 486A	FRUITLAND COAL	3003927475	PROD	PROD	30	31N	6W	SWNE	FC PA - NMNM 078402D	892000929B
NORTHEAST BLANCO UNIT 013B	DAKOTA	3003927480	PROD	PROD	20	30N	7W	NESW	DK PA - NMNM 078402C	892000929C
NORTHEAST BLANCO UNIT 013B	MESAVERDE	3003927480	PROD	PROD	20	30N	7W	NESW	MV PA - NMNM 078402A	8920009290
NORTHEAST BLANCO UNIT 327M	DAKOTA	3003927500	PROD	PROD	20	31N	6W	SWSE	DK PA - NMNM 078402C	892000929C
NORTHEAST BLANCO UNIT 327M	MESAVERDE	3003927500	PROD	PROD	20	31N	6W	SWSE	MV PA - NMNM 078402A	8920009290
NORTHEAST BLANCO UNIT 495A	FRUITLAND COAL	3003927701	PROD	PROD	30	31N	6W	SWNW	FC PA - NMNM 078402D	892000929B
NORTHEAST BLANCO UNIT 411A	FRUITLAND COAL	3003927702	PROD	PROD	10	30N	7W	NWSE	FC PA - NMNM 078402D	892000929B
NORTHEAST BLANCO UNIT 483A	FRUITLAND COAL	3003927715	PROD	PROD	36	31N	7W	SWSE	FC PA - NMNM 078402D	892000929B
NORTHEAST BLANCO UNIT 403A	FRUITLAND COAL	3003927750	PROD	PROD	9	30N	7W	SWSE	FC PA - NMNM 078402D	892000929B
NORTHEAST BLANCO UNIT 468A	FRUITLAND COAL	3003927751	PROD	PROD	2	31N	7W	NENE	FC PA - NMNM 078402D	892000929B
NORTHEAST BLANCO UNIT 219	PICTURED CLIFFS	3003927786	PROD	PROD	30	31N	6W	SWNE	PC PA - NMNM 078402B	892000929A
NORTHEAST BLANCO UNIT 222	PICTURED CLIFFS	3003927787	PROD	PROD	25	31N	7W	SESE	PC PA - NMNM 078402B	892000929A
NORTHEAST BLANCO UNIT 335	DAKOTA	3003927808	PROD	PROD	25	31N	7W	SENE	DK PA - NMNM 078402C	892000929C
NORTHEAST BLANCO UNIT 335	PICTURED CLIFFS	3003927808	PROD	PROD	25	31N	7W	SENE	PC PA - NMNM 078402B	892000929A
NORTHEAST BLANCO UNIT 227	PICTURED CLIFFS	3003929584	PROD	PROD	30	31N	6W	SWNW	PC PA - NMNM 078402B	892000929A
NORTHEAST BLANCO UNIT 401A	FRUITLAND COAL	3003929594	PROD	PROD	9	30N	7W	SENW	FC PA - NMNM 078402D	892000929B
NORTHEAST BLANCO UNIT 219M	MESAVERDE	3003929597	PROD	PROD	30	31N	6W	NESE	MV PA - NMNM 078402A	8920009290
NORTHEAST BLANCO UNIT 219M	PICTURED CLIFFS	3003929597	PROD	PROD	30	31N	6W	NESE	Lease: NMNM 03357	290033570
NORTHEAST BLANCO UNIT 466A	FRUITLAND COAL	3003929614	PROD	PROD	34	31N	7W	SWSE	FC PA - NMNM 078402D	892000929B
NORTHEAST BLANCO UNIT 409A	FRUITLAND COAL	3003929628	PROD	PROD	10	30N	7W	NWNW	FC PA - NMNM 078402D	892000929B
NORTHEAST BLANCO UNIT 013M	MESAVERDE	3003929748	PROD	PROD	20	30N	7W	NENW	MV PA - NMNM 078402A	8920009290
NORTHEAST BLANCO UNIT 342	MESAVERDE	3003929795	PROD	PROD	17	30N	7W	SWSE	MV PA - NMNM 078402A	8920009290
NORTHEAST BLANCO UNIT 010B	MESAVERDE	3003929854	PROD	PROD	16	30N	7W	NESW	MV PA - NMNM 078402A	8920009290
NORTHEAST BLANCO UNIT 238	PICTURED CLIFFS	3003929856	PROD	PROD	25	31N	7W	SESE	PC PA - NMNM 078402B	892000929A
NORTHEAST BLANCO UNIT 427A	FRUITLAND COAL	3003929871	PROD	PROD	16	30N	7W	NWSW	FC PA - NMNM 078402D	892000929B
NORTHEAST BLANCO UNIT 429A	FRUITLAND COAL	3003929886	PROD	PROD	8	30N	7W	SWSE	FC PA - NMNM 078402D	892000929B
NORTHEAST BLANCO UNIT 493A	FRUITLAND COAL	3003929933	PROD	PROD	25	31N	7W	SENE	FC PA - NMNM 078402D	892000929B

NORTHEAST BLANCO UNIT 900	FRUITLAND COAL	3003930032	PROD	PROD	2	30N	7W	NESE	FC PA - NMNM 078402D	892000929B
NORTHEAST BLANCO UNIT 004M	MESAVERDE	3003930072	PROD	PROD	21	30N	7W	SESW	MV PA - NMNM 078402A	8920009290
NORTHEAST BLANCO UNIT 004M	PICTURED CLIFFS	3003930072	PROD	PROD	21	30N	7W	SESW	Lease: NMSF 079060	820790600
NORTHEAST BLANCO UNIT 344M	DAKOTA	3003930149	PROD	PROD	25	31N	7W	NWSE	DK PA - NMNM 078402C	892000929C
NORTHEAST BLANCO UNIT 344M	MESAVERDE	3003930149	PROD	PROD	25	31N	7W	NWSE	MV PA - NMNM 078402A	8920009290
NORTHEAST BLANCO UNIT 019M	DAKOTA	3003930150	PROD	PROD	20	30N	7W	NWNE	DK PA - NMNM 078402C	892000929C
NORTHEAST BLANCO UNIT 417A	FRUITLAND COAL	3003930214	PROD	PROD	2	30N	7W	NWNW	FC PA - NMNM 078402D	892000929B
NORTHEAST BLANCO UNIT 019N	DAKOTA	3003930216	PROD	PROD	20	30N	7W	SESE	DK PA - NMNM 078402C	892000929C
NORTHEAST BLANCO UNIT 419A	FRUITLAND COAL	3003930308	PROD	PROD	3	30N	7W	SWNW	FC PA - NMNM 078402D	892000929B
NORTHEAST BLANCO UNIT 345	DAKOTA	3003930315	PROD	PROD	29	30N	7W	SENE	DK PA - NMNM 078402C	892000929C
NORTHEAST BLANCO UNIT 345	PICTURED CLIFFS	3003930315	PROD	PROD	29	30N	7W	SENE	PC PA - NMNM 078402B	892000929A
NORTHEAST BLANCO UNIT 022M	MESAVERDE	3003930504	PROD	PROD	36	31N	7W	SWSE	MV PA - NMNM 078402A	8920009290
NORTHEAST BLANCO UNIT 423A	FRUITLAND COAL	3003930510	PROD	PROD	8	30N	7W	NESE	FC PA - NMNM 078402D	892000929B
NORTHEAST BLANCO UNIT 485A	FRUITLAND COAL	3003930511	PROD	PROD	3	30N	7W	NWSE	FC PA - NMNM 078402D	892000929B
NORTHEAST BLANCO UNIT 105	MESAVERDE	3004509350	PROD	PROD	24	30N	8W	SWNE	MV PA - NMNM 078402A	8920009290
NORTHEAST BLANCO UNIT 009	MESAVERDE	3004509598	PROD	PROD	12	30N	8W	SESW	MV PA - NMNM 078402A	8920009290
NORTHEAST BLANCO UNIT 030	MESAVERDE	3004509737	PROD	PROD	12	30N	8W	NENE	MV PA - NMNM 078402A	8920009290
NORTHEAST BLANCO UNIT 104	MESAVERDE	3004509791	PROD	PROD	1	30N	8W	SWSW	MV PA - NMNM 078402A	8920009290
NORTHEAST BLANCO UNIT 036	MESAVERDE	3004509954	PROD	PROD	1	30N	8W	NENE	MV PA - NMNM 078402A	8920009290
NORTHEAST BLANCO UNIT 039	MESAVERDE	3004510061	PROD	PROD	36	31N	8W	NESW	MV PA - NMNM 078402A	8920009290
NORTHEAST BLANCO UNIT 046	MESAVERDE	3004510076	PROD	PROD	33	31N	7W	SESW	MV PA - NMNM 078402A	8920009290
NORTHEAST BLANCO UNIT 054	MESAVERDE	3004510115	PROD	PROD	33	31N	7W	SENE	MV PA - NMNM 078402A	8920009290
NORTHEAST BLANCO UNIT 040	MESAVERDE	3004510127	PROD	PROD	36	31N	8W	SWNE	MV PA - NMNM 078402A	8920009290
NORTHEAST BLANCO UNIT 056	MESAVERDE	3004510169	PROD	PROD	34	31N	7W	NENE	MV PA - NMNM 078402A	8920009290
NORTHEAST BLANCO UNIT 056	DAKOTA	3004510169	PROD	PROD	34	31N	7W	NENE	Lease: NMSF 079003	820790030
NORTHEAST BLANCO UNIT 038	MESAVERDE	3004510216	PROD	PROD	31	31N	7W	NWNE	MV PA - NMNM 078402A	8920009290
NORTHEAST BLANCO UNIT 050	MESAVERDE	3004510241	PROD	PROD	25	31N	8W	SWSW	MV PA - NMNM 078402A	8920009290
NORTHEAST BLANCO UNIT 049	MESAVERDE	3004510353	PROD	PROD	30	31N	7W	SENE	MV PA - NMNM 078402A	8920009290
NORTHEAST BLANCO UNIT 041	MESAVERDE	3004510355	PROD	PROD	25	31N	8W	NWNE	MV PA - NMNM 078402A	8920009290
NORTHEAST BLANCO UNIT 053	MESAVERDE	3004510414	PROD	PROD	28	31N	7W	SWSW	MV PA - NMNM 078402A	8920009290

NORTHEAST BLANCO UNIT 042	MESAVERDE	3004510473	PROD	PROD	19	31N	7W	SESW	MV PA - NMNM 078402A	8920009290
NORTHEAST BLANCO UNIT 055	MESAVERDE	3004510474	PROD	PROD	22	31N	7W	NWNE	MV PA - NMNM 078402A	8920009290
NORTHEAST BLANCO UNIT 055	DAKOTA	3004510474	PROD	PROD	22	31N	7W	NWNE	Lease: NMSF 079003	820790030
NORTHEAST BLANCO UNIT 002	MESAVERDE	3004510476	PROD	PROD	20	31N	7W	SESW	MV PA - NMNM 078402A	8920009290
NORTHEAST BLANCO UNIT 061	MESAVERDE	3004510572	PROD	PROD	19	31N	6W	SWNE	MV PA - NMNM 078402A	8920009290
NORTHEAST BLANCO UNIT 059	MESAVERDE	3004510589	PROD	PROD	24	31N	7W	NENE	MV PA - NMNM 078402A	8920009290
NORTHEAST BLANCO UNIT 052	MESAVERDE	3004510772	PROD	PROD	15	31N	7W	SWNE	MV PA - NMNM 078402A	8920009290
NORTHEAST BLANCO UNIT 058	DAKOTA	3004510810	PROD	PROD	13	31N	7W	NENE	DK PA - NMNM 078402C	892000929C
NORTHEAST BLANCO UNIT 058	MESAVERDE	3004510810	PROD	PROD	13	31N	7W	NENE	MV PA - NMNM 078402A	8920009290
NORTHEAST BLANCO UNIT 043	MESAVERDE	3004510858	PROD	PROD	11	31N	7W	SWSW	MV PA - NMNM 078402A	8920009290
NORTHEAST BLANCO UNIT 033	MESAVERDE	3004510867	PROD	PROD	12	31N	7W	SESW	MV PA - NMNM 078402A	8920009290
NORTHEAST BLANCO UNIT 060	MESAVERDE	3004510938	PROD	PROD	7	31N	6W	NENE	MV PA - NMNM 078402A	8920009290
NORTHEAST BLANCO UNIT 029	MESAVERDE	3004513223	PROD	PROD	13	30N	8W	NENE	MV PA - NMNM 078402A	8920009290
NORTHEAST BLANCO UNIT 012	MESAVERDE	3004513330	PROD	PROD	18	30N	7W	SWNE	MV PA - NMNM 078402A	8920009290
NORTHEAST BLANCO UNIT 031	MESAVERDE	3004513331	PROD	PROD	7	30N	7W	SESW	MV PA - NMNM 078402A	8920009290
NORTHEAST BLANCO UNIT 023	MESAVERDE	3004513332	PROD	PROD	6	30N	7W	SESW	MV PA - NMNM 078402A	8920009290
NORTHEAST BLANCO UNIT 032	MESAVERDE	3004513333	PROD	PROD	7	30N	7W	NENE	MV PA - NMNM 078402A	8920009290
NORTHEAST BLANCO UNIT 037	MESAVERDE	3004513344	PROD	PROD	6	30N	7W	NWNE	MV PA - NMNM 078402A	8920009290
NORTHEAST BLANCO UNIT 005R	MESAVERDE	3004521477	PROD	PROD	13	30N	8W	SESW	MV PA - NMNM 078402A	8920009290
NORTHEAST BLANCO UNIT 063	MESAVERDE	3004522042	PROD	PROD	1	31N	7W	SWSW	MV PA - NMNM 078402A	8920009290
NORTHEAST BLANCO UNIT 005A	MESAVERDE	3004522043	PROD	PROD	13	30N	8W	SWNW	MV PA - NMNM 078402A	8920009290
NORTHEAST BLANCO UNIT 105A	MESAVERDE	3004522044	PROD	PROD	24	30N	8W	SESE	MV PA - NMNM 078402A	8920009290
NORTHEAST BLANCO UNIT 009A	MESAVERDE	3004522164	PROD	PROD	12	30N	8W	NENW	MV PA - NMNM 078402A	8920009290
NORTHEAST BLANCO UNIT 065	MESAVERDE	3004522528	PROD	PROD	11	31N	7W	NWNE	MV PA - NMNM 078402A	8920009290
NORTHEAST BLANCO UNIT 023A	MESAVERDE	3004522887	PROD	PROD	6	30N	7W	SESW	MV PA - NMNM 078402A	8920009290
NORTHEAST BLANCO UNIT 104A	MESAVERDE	3004522888	PROD	PROD	1	30N	8W	NWNW	MV PA - NMNM 078402A	8920009290
NORTHEAST BLANCO UNIT 036A	MESAVERDE	3004522889	PROD	PROD	1	30N	8W	SWSE	MV PA - NMNM 078402A	8920009290
NORTHEAST BLANCO UNIT 030A	MESAVERDE	3004522890	PROD	PROD	12	30N	8W	NESE	MV PA - NMNM 078402A	8920009290
NORTHEAST BLANCO UNIT 103A	MESAVERDE	3004522891	PROD	PROD	24	30N	8W	SWNW	MV PA - NMNM 078402A	8920009290
NORTHEAST BLANCO UNIT 066	MESAVERDE	3004522921	PROD	PROD	30	31N	7W	SESW	MV PA - NMNM 078402A	8920009290

NORTHEAST BLANCO UNIT 066A	MESAVERDE	3004522922	PROD	PROD	31	31N	7W	SWNW	MV PA - NMNM 078402A	8920009290
NORTHEAST BLANCO UNIT 039A	MESAVERDE	3004522923	PROD	PROD	36	31N	8W	NWNW	MV PA - NMNM 078402A	8920009290
NORTHEAST BLANCO UNIT 040A	MESAVERDE	3004522924	PROD	PROD	36	31N	8W	SESE	MV PA - NMNM 078402A	8920009290
NORTHEAST BLANCO UNIT 003A	MESAVERDE	3004523088	PROD	PROD	5	30N	7W	SWNW	MV PA - NMNM 078402A	8920009290
NORTHEAST BLANCO UNIT 064	MESAVERDE	3004523089	PROD	PROD	10	31N	7W	SWSW	MV PA - NMNM 078402A	8920009290
NORTHEAST BLANCO UNIT 043A	MESAVERDE	3004523090	PROD	PROD	11	31N	7W	NENW	MV PA - NMNM 078402A	8920009290
NORTHEAST BLANCO UNIT 051A	MESAVERDE	3004523091	PROD	PROD	29	31N	7W	NENW	MV PA - NMNM 078402A	8920009290
NORTHEAST BLANCO UNIT 067	MESAVERDE	3004523201	PROD	PROD	9	31N	7W	SWSW	MV PA - NMNM 078402A	8920009290
NORTHEAST BLANCO UNIT 204	PICTURED CLIFFS	3004523480	PROD	PROD	1	31N	7W	SWSW	PC PA - NMNM 078402B	892000929A
NORTHEAST BLANCO UNIT 067A	MESAVERDE	3004523482	PROD	PROD	9	31N	7W	SWSE	MV PA - NMNM 078402A	8920009290
NORTHEAST BLANCO UNIT 064A	MESAVERDE	3004523483	PROD	PROD	10	31N	7W	SESE	MV PA - NMNM 078402A	8920009290
NORTHEAST BLANCO UNIT 202	PICTURED CLIFFS	3004523484	PROD	PROD	11	31N	7W	NWNE	PC PA - NMNM 078402B	892000929A
NORTHEAST BLANCO UNIT 037A	MESAVERDE	3004524218	PROD	PROD	6	30N	7W	SESE	MV PA - NMNM 078402A	8920009290
NORTHEAST BLANCO UNIT 048A	MESAVERDE	3004524219	PROD	PROD	32	31N	7W	SWSE	MV PA - NMNM 078402A	8920009290
NORTHEAST BLANCO UNIT 047A	MESAVERDE	3004524220	PROD	PROD	32	31N	7W	SENE	MV PA - NMNM 078402A	8920009290
NORTHEAST BLANCO UNIT 034A	MESAVERDE	3004524318	PROD	PROD	18	30N	7W	NESW	MV PA - NMNM 078402A	8920009290
NORTHEAST BLANCO UNIT 045A	MESAVERDE	3004524363	PROD	PROD	5	30N	7W	NESE	MV PA - NMNM 078402A	8920009290
NORTHEAST BLANCO UNIT 031A	MESAVERDE	3004524449	PROD	PROD	7	30N	7W	SWNW	MV PA - NMNM 078402A	8920009290
NORTHEAST BLANCO UNIT 069	MESAVERDE	3004524856	PROD	PROD	26	31N	7W	NENE	MV PA - NMNM 078402A	8920009290
NORTHEAST BLANCO UNIT 070	MESAVERDE	3004524857	PROD	PROD	27	31N	7W	NENE	MV PA - NMNM 078402A	8920009290
NORTHEAST BLANCO UNIT 046A	MESAVERDE	3004524858	PROD	PROD	33	31N	7W	NWNW	MV PA - NMNM 078402A	8920009290
NORTHEAST BLANCO UNIT 071	MESAVERDE	3004524891	PROD	PROD	23	31N	7W	NENE	MV PA - NMNM 078402A	8920009290
NORTHEAST BLANCO UNIT 032A	MESAVERDE	3004524991	PROD	PROD	7	30N	7W	SENE	MV PA - NMNM 078402A	8920009290
NORTHEAST BLANCO UNIT 026A	MESAVERDE	3004525001	PROD	PROD	8	30N	7W	NWNW	MV PA - NMNM 078402A	8920009290
NORTHEAST BLANCO UNIT 068	MESAVERDE	3004525007	PROD	PROD	35	31N	7W	NENE	MV PA - NMNM 078402A	8920009290
NORTHEAST BLANCO UNIT 054A	MESAVERDE	3004525093	PROD	PROD	33	31N	7W	SWSE	MV PA - NMNM 078402A	8920009290
NORTHEAST BLANCO UNIT 072	MESAVERDE	3004525095	PROD	PROD	29	31N	7W	SENE	MV PA - NMNM 078402A	8920009290
NORTHEAST BLANCO UNIT 053A	MESAVERDE	3004525235	PROD	PROD	28	31N	7W	NWNW	MV PA - NMNM 078402A	8920009290
NORTHEAST BLANCO UNIT 055A	MESAVERDE	3004525355	PROD	PROD	22	31N	7W	NWSE	MV PA - NMNM 078402A	8920009290
NORTHEAST BLANCO UNIT 075	MESAVERDE	3004525356	PROD	PROD	22	31N	7W	NESW	MV PA - NMNM 078402A	8920009290

NORTHEAST BLANCO UNIT 074	MESAVERDE	3004525357	PROD	PROD	26	31N	7W	SWSW	MV PA - NMNM 078402A	8920009290
NORTHEAST BLANCO UNIT 070A	MESAVERDE	3004525358	PROD	PROD	27	31N	7W	SWSE	MV PA - NMNM 078402A	8920009290
NORTHEAST BLANCO UNIT 020A	MESAVERDE	3004525359	PROD	PROD	28	31N	7W	SWSE	MV PA - NMNM 078402A	8920009290
NORTHEAST BLANCO UNIT 072A	MESAVERDE	3004525360	PROD	PROD	29	31N	7W	SWSE	MV PA - NMNM 078402A	8920009290
NORTHEAST BLANCO UNIT 073	MESAVERDE	3004525367	PROD	PROD	35	31N	7W	NWSW	MV PA - NMNM 078402A	8920009290
NORTHEAST BLANCO UNIT 056A	MESAVERDE	3004525369	PROD	PROD	34	31N	7W	SWNW	MV PA - NMNM 078402A	8920009290
NORTHEAST BLANCO UNIT 077	MESAVERDE	3004525374	PROD	PROD	15	31N	7W	SWSW	MV PA - NMNM 078402A	8920009290
NORTHEAST BLANCO UNIT 078	MESAVERDE	3004525409	PROD	PROD	21	31N	7W	SWSW	MV PA - NMNM 078402A	8920009290
NORTHEAST BLANCO UNIT 217	PICTURED CLIFFS	3004525522	PROD	PROD	27	31N	7W	SWNE	PC PA - NMNM 078402B	892000929A
NORTHEAST BLANCO UNIT 213	PICTURED CLIFFS	3004526329	PROD	PROD	12	31N	7W	NWNW	PC PA - NMNM 078402B	892000929A
NORTHEAST BLANCO UNIT 215	PICTURED CLIFFS	3004526404	PROD	PROD	26	31N	7W	NWNW	PC PA - NMNM 078402B	892000929A
NORTHEAST BLANCO UNIT 003R	MESAVERDE	3004526457	PROD	PROD	5	30N	7W	NESW	MV PA - NMNM 078402A	8920009290
NORTHEAST BLANCO UNIT 402	FRUITLAND COAL	3004526883	PROD	PROD	5	30N	7W	NENE	FC PA - NMNM 078402D	892000929B
NORTHEAST BLANCO UNIT 406	FRUITLAND COAL	3004526914	PROD	PROD	22	31N	7W	NWNE	FC PA - NMNM 078402D	892000929B
NORTHEAST BLANCO UNIT 447	FRUITLAND COAL	3004527136	PROD	PROD	36	31N	8W	NESW	FC PA - NMNM 078402D	892000929B
NORTHEAST BLANCO UNIT 439	FRUITLAND COAL	3004527147	PROD	PROD	13	30N	8W	SWSW	FC PA - NMNM 078402D	892000929B
NORTHEAST BLANCO UNIT 443	FRUITLAND COAL	3004527163	PROD	PROD	24	30N	8W	SESW	FC PA - NMNM 078402D	892000929B
NORTHEAST BLANCO UNIT 437	FRUITLAND COAL	3004527169	PROD	PROD	12	30N	8W	SESW	FC PA - NMNM 078402D	892000929B
NORTHEAST BLANCO UNIT 435	FRUITLAND COAL	3004527184	PROD	PROD	1	30N	8W	NESW	FC PA - NMNM 078402D	892000929B
NORTHEAST BLANCO UNIT 448	FRUITLAND COAL	3004527223	PROD	PROD	32	31N	7W	SWNE	FC PA - NMNM 078402D	892000929B
NORTHEAST BLANCO UNIT 424	FRUITLAND COAL	3004527243	PROD	PROD	4	30N	7W	SESW	FC PA - NMNM 078402D	892000929B
NORTHEAST BLANCO UNIT 478	FRUITLAND COAL	3004527244	PROD	PROD	21	31N	7W	SWSW	FC PA - NMNM 078402D	892000929B
NORTHEAST BLANCO UNIT 455	FRUITLAND COAL	3004527245	PROD	PROD	31	31N	7W	NWNE	FC PA - NMNM 078402D	892000929B
NORTHEAST BLANCO UNIT 445	FRUITLAND COAL	3004527246	PROD	PROD	25	31N	8W	SWSW	FC PA - NMNM 078402D	892000929B
NORTHEAST BLANCO UNIT 450	FRUITLAND COAL	3004527257	PROD	PROD	32	31N	7W	SESW	FC PA - NMNM 078402D	892000929B
NORTHEAST BLANCO UNIT 453	FRUITLAND COAL	3004527263	PROD	PROD	6	30N	7W	SESW	FC PA - NMNM 078402D	892000929B
NORTHEAST BLANCO UNIT 449	FRUITLAND COAL	3004527265	PROD	PROD	19	31N	7W	SESW	FC PA - NMNM 078402D	892000929B
NORTHEAST BLANCO UNIT 457	FRUITLAND COAL	3004527266	PROD	PROD	31	31N	7W	SESW	FC PA - NMNM 078402D	892000929B
NORTHEAST BLANCO UNIT 469	FRUITLAND COAL	3004527285	PROD	PROD	13	30N	8W	SENE	FC PA - NMNM 078402D	892000929B
NORTHEAST BLANCO UNIT 420	FRUITLAND COAL	3004527286	PROD	PROD	28	31N	7W	NWNE	FC PA - NMNM 078402D	892000929B

NORTHEAST BLANCO UNIT 416	FRUITLAND COAL	3004527287	PROD	PROD	21	31N	7W	NENE	FC PA - NMNM 078402D	892000929B
NORTHEAST BLANCO UNIT 473	FRUITLAND COAL	3004527298	PROD	PROD	36	31N	8W	SWNE	FC PA - NMNM 078402D	892000929B
NORTHEAST BLANCO UNIT 422	FRUITLAND COAL	3004527299	PROD	PROD	20	31N	7W	SESW	FC PA - NMNM 078402D	892000929B
NORTHEAST BLANCO UNIT 430	FRUITLAND COAL	3004527308	PROD	PROD	5	30N	7W	NWSW	FC PA - NMNM 078402D	892000929B
NORTHEAST BLANCO UNIT 432	FRUITLAND COAL	3004527309	PROD	PROD	7	30N	7W	NENE	FC PA - NMNM 078402D	892000929B
NORTHEAST BLANCO UNIT 446	FRUITLAND COAL	3004527310	PROD	PROD	33	31N	7W	NESW	FC PA - NMNM 078402D	892000929B
NORTHEAST BLANCO UNIT 472	FRUITLAND COAL	3004527318	PROD	PROD	29	31N	7W	SWNE	FC PA - NMNM 078402D	892000929B
NORTHEAST BLANCO UNIT 471	FRUITLAND COAL	3004527319	PROD	PROD	25	31N	8W	NWNE	FC PA - NMNM 078402D	892000929B
NORTHEAST BLANCO UNIT 414	FRUITLAND COAL	3004527320	PROD	PROD	30	31N	7W	SENE	FC PA - NMNM 078402D	892000929B
NORTHEAST BLANCO UNIT 465	FRUITLAND COAL	3004527326	PROD	PROD	1	30N	8W	NENE	FC PA - NMNM 078402D	892000929B
NORTHEAST BLANCO UNIT 451	FRUITLAND COAL	3004527327	PROD	PROD	6	30N	7W	NWNE	FC PA - NMNM 078402D	892000929B
NORTHEAST BLANCO UNIT 408	FRUITLAND COAL	3004527331	PROD	PROD	20	31N	7W	NENE	FC PA - NMNM 078402D	892000929B
NORTHEAST BLANCO UNIT 467	FRUITLAND COAL	3004527353	PROD	PROD	12	30N	8W	NENE	FC PA - NMNM 078402D	892000929B
NORTHEAST BLANCO UNIT 412	FRUITLAND COAL	3004527354	PROD	PROD	29	31N	7W	SESW	FC PA - NMNM 078402D	892000929B
NORTHEAST BLANCO UNIT 454	FRUITLAND COAL	3004527402	PROD	PROD	33	31N	7W	NENE	FC PA - NMNM 078402D	892000929B
NORTHEAST BLANCO UNIT 418	FRUITLAND COAL	3004527403	PROD	PROD	28	31N	7W	SWSW	FC PA - NMNM 078402D	892000929B
NORTHEAST BLANCO UNIT 463	FRUITLAND COAL	3004527417	PROD	PROD	18	30N	7W	NWSE	FC PA - NMNM 078402D	892000929B
NORTHEAST BLANCO UNIT 459	FRUITLAND COAL	3004527448	PROD	PROD	19	31N	7W	SWNE	FC PA - NMNM 078402D	892000929B
NORTHEAST BLANCO UNIT 458	FRUITLAND COAL	3004527475	PROD	PROD	13	31N	7W	NENE	FC PA - NMNM 078402D	892000929B
NORTHEAST BLANCO UNIT 456	FRUITLAND COAL	3004527476	PROD	PROD	26	31N	7W	SENE	FC PA - NMNM 078402D	892000929B
NORTHEAST BLANCO UNIT 428	FRUITLAND COAL	3004527487	PROD	PROD	24	31N	7W	NENE	FC PA - NMNM 078402D	892000929B
NORTHEAST BLANCO UNIT 410	FRUITLAND COAL	3004527488	PROD	PROD	9	31N	7W	NESW	FC PA - NMNM 078402D	892000929B
NORTHEAST BLANCO UNIT 452	FRUITLAND COAL	3004527507	PROD	PROD	15	31N	7W	SWNE	FC PA - NMNM 078402D	892000929B
NORTHEAST BLANCO UNIT 434	FRUITLAND COAL	3004527508	PROD	PROD	23	31N	7W	NESW	FC PA - NMNM 078402D	892000929B
NORTHEAST BLANCO UNIT 460	FRUITLAND COAL	3004527509	PROD	PROD	7	31N	6W	NENE	FC PA - NMNM 078402D	892000929B
NORTHEAST BLANCO UNIT 436	FRUITLAND COAL	3004527510	PROD	PROD	19	31N	6W	SWNE	FC PA - NMNM 078402D	892000929B
NORTHEAST BLANCO UNIT 462	FRUITLAND COAL	3004527536	PROD	PROD	1	31N	7W	SESW	FC PA - NMNM 078402D	892000929B
NORTHEAST BLANCO UNIT 464	FRUITLAND COAL	3004527548	PROD	PROD	10	31N	7W	SWSW	FC PA - NMNM 078402D	892000929B
NORTHEAST BLANCO UNIT 484	FRUITLAND COAL	3004527549	PROD	PROD	16	31N	7W	NENE	FC PA - NMNM 078402D	892000929B
NORTHEAST BLANCO UNIT 440	FRUITLAND COAL	3004527555	PROD	PROD	11	31N	7W	NENE	FC PA - NMNM 078402D	892000929B

NORTHEAST BLANCO UNIT 490	FRUITLAND COAL	3004527567	PROD	PROD	14	31N	7W	SENE	FC PA - NMNM 078402D	892000929B
NORTHEAST BLANCO UNIT 476	FRUITLAND COAL	3004527568	PROD	PROD	22	31N	7W	SWSW	FC PA - NMNM 078402D	892000929B
NORTHEAST BLANCO UNIT 442	FRUITLAND COAL	3004527569	PROD	PROD	11	31N	7W	SWSW	FC PA - NMNM 078402D	892000929B
NORTHEAST BLANCO UNIT 474	FRUITLAND COAL	3004527570	PROD	PROD	26	31N	7W	SWSW	FC PA - NMNM 078402D	892000929B
NORTHEAST BLANCO UNIT 470	FRUITLAND COAL	3004527571	PROD	PROD	27	31N	7W	SENE	FC PA - NMNM 078402D	892000929B
NORTHEAST BLANCO UNIT 482	FRUITLAND COAL	3004527582	PROD	PROD	15	31N	7W	SWSW	FC PA - NMNM 078402D	892000929B
NORTHEAST BLANCO UNIT 426	FRUITLAND COAL	3004527584	PROD	PROD	6	31N	6W	NWSW	FC PA - NMNM 078402D	892000929B
NORTHEAST BLANCO UNIT 438	FRUITLAND COAL	3004527659	PROD	PROD	18	31N	6W	NENE	FC PA - NMNM 078402D	892000929B
NORTHEAST BLANCO UNIT 492	FRUITLAND COAL	3004527660	PROD	PROD	12	31N	7W	NWNE	FC PA - NMNM 078402D	892000929B
NORTHEAST BLANCO UNIT 500	FRUITLAND COAL	3004527687	PROD	PROD	20	31N	6W	NWNW	FC PA - NMNM 078402D	892000929B
NORTHEAST BLANCO UNIT 489	FRUITLAND COAL	3004527705	TA ZONE	TA	12	31N	7W	NWSW	FC PA - NMNM 078402D	892000929B
NORTHEAST BLANCO UNIT 468	FRUITLAND COAL	3004527707	PROD	PROD	35	31N	7W	NENE	FC PA - NMNM 078402D	892000929B
NORTHEAST BLANCO UNIT 488	FRUITLAND COAL	3004527708	PROD	PROD	24	31N	7W	NWSW	FC PA - NMNM 078402D	892000929B
NORTHEAST BLANCO UNIT 496	FRUITLAND COAL	3004527709	PROD	PROD	18	31N	6W	NWSW	FC PA - NMNM 078402D	892000929B
NORTHEAST BLANCO UNIT 498	FRUITLAND COAL	3004527710	PROD	PROD	13	31N	7W	NWSW	FC PA - NMNM 078402D	892000929B
NORTHEAST BLANCO UNIT 444	FRUITLAND COAL	3004527720	PROD	PROD	23	31N	7W	NENE	FC PA - NMNM 078402D	892000929B
NORTHEAST BLANCO UNIT 466	FRUITLAND COAL	3004527721	PROD	PROD	34	31N	7W	NWNE	FC PA - NMNM 078402D	892000929B
NORTHEAST BLANCO UNIT 480	FRUITLAND COAL	3004527722	PROD	PROD	14	31N	7W	NWSW	FC PA - NMNM 078402D	892000929B
NORTHEAST BLANCO UNIT 487	FRUITLAND COAL	3004527723	PROD	PROD	35	31N	7W	NWSW	FC PA - NMNM 078402D	892000929B
NORTHEAST BLANCO UNIT 494	FRUITLAND COAL	3004527724	PROD	PROD	27	31N	7W	SESW	FC PA - NMNM 078402D	892000929B
NORTHEAST BLANCO UNIT 486	FRUITLAND COAL	3004527775	PROD	PROD	19	31N	6W	NWSW	FC PA - NMNM 078402D	892000929B
NORTHEAST BLANCO UNIT 441R	FRUITLAND COAL	3004527817	PROD	PROD	24	30N	8W	SWNE	FC PA - NMNM 078402D	892000929B
NORTHEAST BLANCO UNIT 504	FRUITLAND COAL	3004527991	PROD	PROD	16	31N	7W	SESW	FC PA - NMNM 078402D	892000929B
NORTHEAST BLANCO UNIT 461	FRUITLAND COAL	3004528222	PROD	PROD	12	30N	8W	NESE	FC PA - NMNM 078402D	892000929B
NORTHEAST BLANCO UNIT 400R	FRUITLAND COAL	3004528271	PROD	PROD	7	31N	6W	NWSW	FC PA - NMNM 078402D	892000929B
NORTHEAST BLANCO UNIT 404R	FRUITLAND COAL	3004528320	PROD	PROD	34	31N	7W	SWNW	FC PA - NMNM 078402D	892000929B
NORTHEAST BLANCO UNIT 307	FRUITLAND COAL	3004528984	TA ZONE	PROD	24	31N	7W	SWNW	FC PA - NMNM 078402D	892000929B
NORTHEAST BLANCO UNIT 307	PICTURED CLIFFS	3004528984	PROD	PROD	24	31N	7W	SWNW	PC PA - NMNM 078402B	892000929A
NORTHEAST BLANCO UNIT 310	MESAVERDE	3004529793	PROD	PROD	4	30N	7W	NWNW	MV PA - NMNM 078402A	8920009290
NORTHEAST BLANCO UNIT 052A	MESAVERDE	3004529859	PROD	PROD	15	31N	7W	NESE	MV PA - NMNM 078402A	8920009290

NORTHEAST BLANCO UNIT 052A	DAKOTA	3004529859	PROD	PROD	15	31N	7W	NESE	Lease: NMNM 03356	290033560
NORTHEAST BLANCO UNIT 311	DAKOTA	3004529860	TA ZONE	PROD	13	31N	7W	SWNW	DK PA - NMNM 078402C	892000929C
NORTHEAST BLANCO UNIT 311	MESAVERDE	3004529860	PROD	PROD	13	31N	7W	SWNW	MV PA - NMNM 078402A	8920009290
NORTHEAST BLANCO UNIT 057M	MESAVERDE	3004530282	PROD	PROD	21	31N	7W	SWSE	MV PA - NMNM 078402A	8920009290
NORTHEAST BLANCO UNIT 057M	DAKOTA	3004530282	PROD	PROD	21	31N	7W	SWSE	Lease: NMSF 079045	820790450
NORTHEAST BLANCO UNIT 058M	DAKOTA	3004530283	PROD	PROD	13	31N	7W	SWSE	DK PA - NMNM 078402C	892000929C
NORTHEAST BLANCO UNIT 058M	MESAVERDE	3004530283	PROD	PROD	13	31N	7W	SWSE	MV PA - NMNM 078402A	8920009290
NORTHEAST BLANCO UNIT 312	DAKOTA	3004530284	PROD	PROD	14	31N	7W	NWSE	DK PA - NMNM 078402C	892000929C
NORTHEAST BLANCO UNIT 312	MESAVERDE	3004530284	PROD	PROD	14	31N	7W	NWSE	MV PA - NMNM 078402A	8920009290
NORTHEAST BLANCO UNIT 033A	MESAVERDE	3004530327	PROD	PROD	12	31N	7W	NENW	MV PA - NMNM 078402A	8920009290
NORTHEAST BLANCO UNIT 071A	DAKOTA	3004530668	PROD	PROD	23	31N	7W	NESE	DK PA - NMNM 078402C	892000929C
NORTHEAST BLANCO UNIT 071A	MESAVERDE	3004530668	PROD	PROD	23	31N	7W	NESE	MV PA - NMNM 078402A	8920009290
NORTHEAST BLANCO UNIT 073A	MESAVERDE	3004530957	PROD	PROD	35	31N	7W	NENW	MV PA - NMNM 078402A	8920009290
NORTHEAST BLANCO UNIT 059A	DAKOTA	3004530958	PROD	PROD	24	31N	7W	NESE	DK PA - NMNM 078402C	892000929C
NORTHEAST BLANCO UNIT 059A	MESAVERDE	3004530958	PROD	PROD	24	31N	7W	NESE	MV PA - NMNM 078402A	8920009290
NORTHEAST BLANCO UNIT 077A	MESAVERDE	3004530960	PROD	PROD	15	31N	7W	SWNW	MV PA - NMNM 078402A	8920009290
NORTHEAST BLANCO UNIT 077A	DAKOTA	3004530960	PROD	PROD	15	31N	7W	SWNW	Lease: NMNM 03356	290033560
NORTHEAST BLANCO UNIT 322	DAKOTA	3004531022	PROD	PROD	18	31N	6W	NWSW	DK PA - NMNM 078402C	892000929C
NORTHEAST BLANCO UNIT 322	MESAVERDE	3004531022	PROD	PROD	18	31N	6W	NWSW	MV PA - NMNM 078402A	8920009290
NORTHEAST BLANCO UNIT 323	DAKOTA	3004531023	PROD	PROD	19	31N	6W	SESW	DK PA - NMNM 078402C	892000929C
NORTHEAST BLANCO UNIT 323	MESAVERDE	3004531023	PROD	PROD	19	31N	6W	SESW	MV PA - NMNM 078402A	8920009290
NORTHEAST BLANCO UNIT 078A	MESAVERDE	3004531024	PROD	PROD	21	31N	7W	NWNW	MV PA - NMNM 078402A	8920009290
NORTHEAST BLANCO UNIT 078A	DAKOTA	3004531024	PROD	PROD	21	31N	7W	NWNW	Lease: NMSF 079045	820790450
NORTHEAST BLANCO UNIT 065A	DAKOTA	3004531076	PROD	PROD	11	31N	7W	SESE	DK PA - NMNM 078402C	892000929C
NORTHEAST BLANCO UNIT 065A	MESAVERDE	3004531076	PROD	PROD	11	31N	7W	SESE	MV PA - NMNM 078402A	8920009290
NORTHEAST BLANCO UNIT 060A	DAKOTA	3004531088	PROD	PROD	7	31N	6W	SESE	DK PA - NMNM 078402C	892000929C
NORTHEAST BLANCO UNIT 060A	MESAVERDE	3004531088	PROD	PROD	7	31N	6W	SESE	MV PA - NMNM 078402A	8920009290
NORTHEAST BLANCO UNIT 319	DAKOTA	3004531089	TA ZONE	PROD	7	31N	6W	SESW	DK PA - NMNM 078402C	892000929C
NORTHEAST BLANCO UNIT 319	MESAVERDE	3004531089	PROD	PROD	7	31N	6W	SESW	MV PA - NMNM 078402A	8920009290
NORTHEAST BLANCO UNIT 319	MANCOS	3004531089	TA ZONE	PROD	7	31N	6W	SESW	Lease: NMSF 078988	820789880

NORTHEAST BLANCO UNIT 319M	DAKOTA	3004531090	PROD	PROD	7	31N	6W	SWNW	DK PA - NMNM 078402C	892000929C
NORTHEAST BLANCO UNIT 319M	MESAVERDE	3004531090	PROD	PROD	7	31N	6W	SWNW	MV PA - NMNM 078402A	8920009290
NORTHEAST BLANCO UNIT 002A	MESAVERDE	3004531091	PROD	PROD	20	31N	7W	NENW	MV PA - NMNM 078402A	8920009290
NORTHEAST BLANCO UNIT 318	DAKOTA	3004531093	PROD	PROD	12	31N	7W	SENE	DK PA - NMNM 078402C	892000929C
NORTHEAST BLANCO UNIT 318	MESAVERDE	3004531093	PROD	PROD	12	31N	7W	SENE	MV PA - NMNM 078402A	8920009290
NORTHEAST BLANCO UNIT 324	DAKOTA	3004531133	PROD	PROD	14	31N	7W	SENW	DK PA - NMNM 078402C	892000929C
NORTHEAST BLANCO UNIT 324	MESAVERDE	3004531133	PROD	PROD	14	31N	7W	SENW	MV PA - NMNM 078402A	8920009290
NORTHEAST BLANCO UNIT 320M	DAKOTA	3004531159	PROD	PROD	6	31N	6W	SESE	DK PA - NMNM 078402C	892000929C
NORTHEAST BLANCO UNIT 320M	MESAVERDE	3004531159	PROD	PROD	6	31N	6W	SESE	MV PA - NMNM 078402A	8920009290
NORTHEAST BLANCO UNIT 320	DAKOTA	3004531160	PROD	PROD	6	31N	6W	NESW	DK PA - NMNM 078402C	892000929C
NORTHEAST BLANCO UNIT 320	MESAVERDE	3004531160	PROD	PROD	6	31N	6W	NESW	MV PA - NMNM 078402A	8920009290
NORTHEAST BLANCO UNIT 321	DAKOTA	3004531163	PROD	PROD	18	31N	6W	SWSE	DK PA - NMNM 078402C	892000929C
NORTHEAST BLANCO UNIT 321	MESAVERDE	3004531163	PROD	PROD	18	31N	6W	SWSE	MV PA - NMNM 078402A	8920009290
NORTHEAST BLANCO UNIT 321	PICTURED CLIFFS	3004531163	PROD	PROD	18	31N	6W	SWSE	PC PA - NMNM 078402B	892000929A
NORTHEAST BLANCO UNIT 041A	DAKOTA	3004531198	PROD	PROD	25	31N	8W	SWSE	DK PA - NMNM 078402C	892000929C
NORTHEAST BLANCO UNIT 041A	MESAVERDE	3004531198	PROD	PROD	25	31N	8W	SWSE	MV PA - NMNM 078402A	8920009290
NORTHEAST BLANCO UNIT 050A	DAKOTA	3004531199	PROD	PROD	25	31N	8W	NENW	DK PA - NMNM 078402C	892000929C
NORTHEAST BLANCO UNIT 050A	MESAVERDE	3004531199	PROD	PROD	25	31N	8W	NENW	MV PA - NMNM 078402A	8920009290
NORTHEAST BLANCO UNIT 325	DAKOTA	3004531225	PROD	PROD	23	31N	7W	SWNW	DK PA - NMNM 078402C	892000929C
NORTHEAST BLANCO UNIT 325	MESAVERDE	3004531225	PROD	PROD	23	31N	7W	SWNW	MV PA - NMNM 078402A	8920009290
NORTHEAST BLANCO UNIT 311M	DAKOTA	3004531261	PROD	PROD	13	31N	7W	SWSW	DK PA - NMNM 078402C	892000929C
NORTHEAST BLANCO UNIT 311M	MESAVERDE	3004531261	PROD	PROD	13	31N	7W	SWSW	MV PA - NMNM 078402A	8920009290
NORTHEAST BLANCO UNIT 069A	DAKOTA	3004531262	PROD	PROD	26	31N	7W	SESE	DK PA - NMNM 078402C	892000929C
NORTHEAST BLANCO UNIT 069A	MESAVERDE	3004531262	PROD	PROD	26	31N	7W	SESE	MV PA - NMNM 078402A	8920009290
NORTHEAST BLANCO UNIT 318M	DAKOTA	3004531271	TA ZONE	PROD	12	31N	7W	SESE	DK PA - NMNM 078402C	892000929C
NORTHEAST BLANCO UNIT 318M	MESAVERDE	3004531271	PROD	PROD	12	31N	7W	SESE	MV PA - NMNM 078402A	8920009290
NORTHEAST BLANCO UNIT 061A	DAKOTA	3004531272	PROD	PROD	19	31N	6W	SENE	DK PA - NMNM 078402C	892000929C
NORTHEAST BLANCO UNIT 061A	MESAVERDE	3004531272	PROD	PROD	19	31N	6W	SENE	MV PA - NMNM 078402A	8920009290
NORTHEAST BLANCO UNIT 307M	DAKOTA	3004531273	PROD	PROD	24	31N	7W	SWSW	DK PA - NMNM 078402C	892000929C
NORTHEAST BLANCO UNIT 307M	MESAVERDE	3004531273	PROD	PROD	24	31N	7W	SWSW	MV PA - NMNM 078402A	8920009290

NORTHEAST BLANCO UNIT 321M	DAKOTA	3004531288	PROD	PROD	18	31N	6W	NWNE	DK PA - NMNM 078402C	892000929C
NORTHEAST BLANCO UNIT 321M	MESAVERDE	3004531288	PROD	PROD	18	31N	6W	NWNE	MV PA - NMNM 078402A	8920009290
NORTHEAST BLANCO UNIT 325M	DAKOTA	3004531289	PROD	PROD	23	31N	7W	SWSW	DK PA - NMNM 078402C	892000929C
NORTHEAST BLANCO UNIT 325M	MESAVERDE	3004531289	PROD	PROD	23	31N	7W	SWSW	MV PA - NMNM 078402A	8920009290
NORTHEAST BLANCO UNIT 012M	DAKOTA	3004531290	PROD	PROD	18	30N	8W	NESW	DK PA - NMNM 078402C	892000929C
NORTHEAST BLANCO UNIT 012M	MESAVERDE	3004531290	PROD	PROD	18	30N	8W	NESW	MV PA - NMNM 078402A	8920009290
NORTHEAST BLANCO UNIT 327	DAKOTA	3004531291	PROD	PROD	20	31N	6W	NWNW	DK PA - NMNM 078402C	892000929C
NORTHEAST BLANCO UNIT 327	MESAVERDE	3004531291	PROD	PROD	20	31N	6W	NWNW	MV PA - NMNM 078402A	8920009290
NORTHEAST BLANCO UNIT 105B	MESAVERDE	3004531308	PROD	PROD	24	30N	8W	SESE	MV PA - NMNM 078402A	8920009290
NORTHEAST BLANCO UNIT 105B	DAKOTA	3004531308	PROD	PROD	24	30N	8W	SESE	Lease: NMSF 078615-A	082078615A
NORTHEAST BLANCO UNIT 029A	MESAVERDE	3004531309	PROD	PROD	24	30N	8W	SWNE	MV PA - NMNM 078402A	8920009290
NORTHEAST BLANCO UNIT 443A	FRUITLAND COAL	3004531354	PROD	PROD	24	30N	8W	SWNW	FC PA - NMNM 078402D	892000929B
NORTHEAST BLANCO UNIT 442A	FRUITLAND COAL	3004531362	PROD	PROD	11	31N	7W	NENW	FC PA - NMNM 078402D	892000929B
NORTHEAST BLANCO UNIT 464A	FRUITLAND COAL	3004531363	PROD	PROD	10	31N	7W	SESE	FC PA - NMNM 078402D	892000929B
NORTHEAST BLANCO UNIT 496A	FRUITLAND COAL	3004531364	PROD	PROD	18	31N	6W	NENW	FC PA - NMNM 078402D	892000929B
NORTHEAST BLANCO UNIT 322M	DAKOTA	3004531365	TA ZONE	PROD	18	31N	6W	NENW	DK PA - NMNM 078402C	892000929C
NORTHEAST BLANCO UNIT 322M	MESAVERDE	3004531365	PROD	PROD	18	31N	6W	NENW	MV PA - NMNM 078402A	8920009290
NORTHEAST BLANCO UNIT 323M	DAKOTA	3004531366	PROD	PROD	19	31N	6W	NWSW	DK PA - NMNM 078402C	892000929C
NORTHEAST BLANCO UNIT 323M	MESAVERDE	3004531366	PROD	PROD	19	31N	6W	NWSW	MV PA - NMNM 078402A	8920009290
NORTHEAST BLANCO UNIT 410A	FRUITLAND COAL	3004531367	PROD	PROD	9	31N	7W	NESE	FC PA - NMNM 078402D	892000929B
NORTHEAST BLANCO UNIT 504A	FRUITLAND COAL	3004531397	PROD	PROD	16	31N	7W	NENW	FC PA - NMNM 078402D	892000929B
NORTHEAST BLANCO UNIT 433A	FRUITLAND COAL	3004531440	PROD	PROD	24	30N	7W	SWNE	FC PA - NMNM 078402D	892000929B
NORTHEAST BLANCO UNIT 441A	FRUITLAND COAL	3004531893	PROD	PROD	24	30N	8W	NWSE	FC PA - NMNM 078402D	892000929B
NORTHEAST BLANCO UNIT 484A	FRUITLAND COAL	3004532013	PROD	PROD	16	31N	7W	NWSE	FC PA - NMNM 078402D	892000929B
NORTHEAST BLANCO UNIT 042A	DAKOTA	3004532018	PROD	PROD	19	31N	7W	NWNW	DK PA - NMNM 078402C	892000929C
NORTHEAST BLANCO UNIT 042A	MESAVERDE	3004532018	PROD	PROD	19	31N	7W	NWNW	MV PA - NMNM 078402A	8920009290
NORTHEAST BLANCO UNIT 482A	FRUITLAND COAL	3004532019	PROD	PROD	15	31N	7W	NWNW	FC PA - NMNM 078402D	892000929B
NORTHEAST BLANCO UNIT 435A	FRUITLAND COAL	3004532020	PROD	PROD	1	30N	8W	NWNW	FC PA - NMNM 078402D	892000929B
NORTHEAST BLANCO UNIT 440A	FRUITLAND COAL	3004532066	PROD	PROD	11	31N	7W	SESE	FC PA - NMNM 078402D	892000929B
NORTHEAST BLANCO UNIT 437A	FRUITLAND COAL	3004532070	PROD	PROD	12	30N	8W	NENW	FC PA - NMNM 078402D	892000929B

NORTHEAST BLANCO UNIT 447A	FRUITLAND COAL	3004532113	PROD	PROD	36	31N	8W	NWNW	FC PA - NMNM 078402D	892000929B
NORTHEAST BLANCO UNIT 445A	FRUITLAND COAL	3004532120	PROD	PROD	25	31N	8W	NENW	FC PA - NMNM 078402D	892000929B
NORTHEAST BLANCO UNIT 457A	FRUITLAND COAL	3004532138	PROD	PROD	30	31N	7W	SEW	FC PA - NMNM 078402D	892000929B
NORTHEAST BLANCO UNIT 330M	DAKOTA	3004532141	PROD	PROD	27	31N	7W	NENW	DK PA - NMNM 078402C	892000929C
NORTHEAST BLANCO UNIT 330M	MESAVERDE	3004532141	PROD	PROD	27	31N	7W	NENW	MV PA - NMNM 078402A	8920009290
NORTHEAST BLANCO UNIT 307N	DAKOTA	3004532144	PROD	PROD	24	31N	7W	SWNW	DK PA - NMNM 078402C	892000929C
NORTHEAST BLANCO UNIT 307N	MESAVERDE	3004532144	PROD	PROD	24	31N	7W	SWNW	MV PA - NMNM 078402A	8920009290
NORTHEAST BLANCO UNIT 325N	DAKOTA	3004532155	PROD	PROD	23	31N	7W	NESW	DK PA - NMNM 078402C	892000929C
NORTHEAST BLANCO UNIT 325N	MESAVERDE	3004532155	PROD	PROD	23	31N	7W	NESW	MV PA - NMNM 078402A	8920009290
NORTHEAST BLANCO UNIT 449A	FRUITLAND COAL	3004532172	PROD	PROD	19	31N	7W	NENW	FC PA - NMNM 078402D	892000929B
NORTHEAST BLANCO UNIT 221	PICTURED CLIFFS	3004532190	PROD	PROD	13	31N	7W	SWNW	PC PA - NMNM 078402B	892000929A
NORTHEAST BLANCO UNIT 465A	FRUITLAND COAL	3004532214	PROD	PROD	1	30N	8W	SWSE	FC PA - NMNM 078402D	892000929B
NORTHEAST BLANCO UNIT 439A	FRUITLAND COAL	3004532221	PROD	PROD	12	30N	8W	SESW	FC PA - NMNM 078402D	892000929B
NORTHEAST BLANCO UNIT 330	DAKOTA	3004532228	PROD	PROD	27	31N	7W	NESW	DK PA - NMNM 078402C	892000929C
NORTHEAST BLANCO UNIT 330	MESAVERDE	3004532228	PROD	PROD	27	31N	7W	NESW	MV PA - NMNM 078402A	8920009290
NORTHEAST BLANCO UNIT 333	DAKOTA	3004532246	PROD	PROD	19	31N	6W	SWNE	DK PA - NMNM 078402C	892000929C
NORTHEAST BLANCO UNIT 333	PICTURED CLIFFS	3004532246	PROD	PROD	19	31N	6W	SWNE	PC PA - NMNM 078402B	892000929A
NORTHEAST BLANCO UNIT 329	DAKOTA	3004532248	PROD	PROD	24	31N	7W	NENE	DK PA - NMNM 078402C	892000929C
NORTHEAST BLANCO UNIT 329	PICTURED CLIFFS	3004532248	PROD	PROD	24	31N	7W	NENE	PC PA - NMNM 078402B	892000929A
NORTHEAST BLANCO UNIT 455A	FRUITLAND COAL	3004532249	PROD	PROD	31	31N	7W	NWSE	FC PA - NMNM 078402D	892000929B
NORTHEAST BLANCO UNIT 220	PICTURED CLIFFS	3004532264	PROD	PROD	24	31N	7W	SWSW	PC PA - NMNM 078402B	892000929A
NORTHEAST BLANCO UNIT 306E	DAKOTA	3004532278	PROD	PROD	26	31N	7W	SWSW	DK PA - NMNM 078402C	892000929C
NORTHEAST BLANCO UNIT 460A	FRUITLAND COAL	3004532279	PROD	PROD	7	31N	6W	SWSE	FC PA - NMNM 078402D	892000929B
NORTHEAST BLANCO UNIT 438A	FRUITLAND COAL	3004532280	PROD	PROD	18	31N	6W	SWSE	FC PA - NMNM 078402D	892000929B
NORTHEAST BLANCO UNIT 458A	FRUITLAND COAL	3004532281	PROD	PROD	13	31N	7W	SWSE	FC PA - NMNM 078402D	892000929B
NORTHEAST BLANCO UNIT 334	DAKOTA	3004532297	PROD	PROD	26	31N	7W	NENE	DK PA - NMNM 078402C	892000929C
NORTHEAST BLANCO UNIT 334	PICTURED CLIFFS	3004532297	PROD	PROD	26	31N	7W	NENE	PC PA - NMNM 078402B	892000929A
NORTHEAST BLANCO UNIT 500A	FRUITLAND COAL	3004532298	PROD	PROD	20	31N	6W	SWNW	FC PA - NMNM 078402D	892000929B
NORTHEAST BLANCO UNIT 463A	FRUITLAND COAL	3004532313	PROD	PROD	18	30N	7W	SEW	FC PA - NMNM 078402D	892000929B
NORTHEAST BLANCO UNIT 066M	DAKOTA	3004532319	PROD	PROD	30	31N	7W	SEW	DK PA - NMNM 078402C	892000929C

NORTHEAST BLANCO UNIT 066M	MESAVERDE	3004532319	PROD	PROD	30	31N	7W	SENW	MV PA - NMNM 078402A	8920009290
NORTHEAST BLANCO UNIT 221J	PICTURED CLIFFS	3004532320	PROD	PROD	13	31N	7W	SWSW	PC PA - NMNM 078402B	892000929A
NORTHEAST BLANCO UNIT 436A	FRUITLAND COAL	3004532321	PROD	PROD	19	31N	6W	SWNW	FC PA - NMNM 078402D	892000929B
NORTHEAST BLANCO UNIT 426A	FRUITLAND COAL	3004532333	PROD	PROD	6	31N	6W	SESE	FC PA - NMNM 078402D	892000929B
NORTHEAST BLANCO UNIT 462A	FRUITLAND COAL	3004532355	PROD	PROD	1	31N	7W	SWSE	FC PA - NMNM 078402D	892000929B
NORTHEAST BLANCO UNIT 422A	FRUITLAND COAL	3004532371	PROD	PROD	20	31N	7W	SENW	FC PA - NMNM 078402D	892000929B
NORTHEAST BLANCO UNIT 408A	FRUITLAND COAL	3004532372	PROD	PROD	20	31N	7W	SESE	FC PA - NMNM 078402D	892000929B
NORTHEAST BLANCO UNIT 418A	FRUITLAND COAL	3004532373	PROD	PROD	28	31N	7W	NWNW	FC PA - NMNM 078402D	892000929B
NORTHEAST BLANCO UNIT 461A	FRUITLAND COAL	3004532374	PROD	PROD	12	30N	8W	NENE	FC PA - NMNM 078402D	892000929B
NORTHEAST BLANCO UNIT 430A	FRUITLAND COAL	3004532375	PROD	PROD	5	30N	7W	SWNW	FC PA - NMNM 078402D	892000929B
NORTHEAST BLANCO UNIT 324M	DAKOTA	3004532376	PROD	PROD	14	31N	7W	NWSW	DK PA - NMNM 078402C	892000929C
NORTHEAST BLANCO UNIT 324M	MESAVERDE	3004532376	PROD	PROD	14	31N	7W	NWSW	MV PA - NMNM 078402A	8920009290
NORTHEAST BLANCO UNIT 448A	FRUITLAND COAL	3004532379	PROD	PROD	32	31N	7W	SWSE	FC PA - NMNM 078402D	892000929B
NORTHEAST BLANCO UNIT 481A	FRUITLAND COAL	3004532380	PROD	PROD	35	31N	7W	NENE	FC PA - NMNM 078402D	892000929B
NORTHEAST BLANCO UNIT 478A	FRUITLAND COAL	3004532395	PROD	PROD	21	31N	7W	NWNW	FC PA - NMNM 078402D	892000929B
NORTHEAST BLANCO UNIT 050E	DAKOTA	3004532409	TA ZONE	TA	25	31N	8W	SWSW	DK PA - NMNM 078402C	892000929C
NORTHEAST BLANCO UNIT 491A	FRUITLAND COAL	3004532410	PROD	PROD	26	31N	7W	SESE	FC PA - NMNM 078402D	892000929B
NORTHEAST BLANCO UNIT 487A	FRUITLAND COAL	3004532411	PROD	PROD	35	31N	7W	NENW	FC PA - NMNM 078402D	892000929B
NORTHEAST BLANCO UNIT 406A	FRUITLAND COAL	3004532412	TA ZONE	TA	22	31N	7W	NWSE	FC PA - NMNM 078402D	892000929B
NORTHEAST BLANCO UNIT 498A	FRUITLAND COAL	3004532413	PROD	PROD	13	31N	7W	NWNW	FC PA - NMNM 078402D	892000929B
NORTHEAST BLANCO UNIT 490A	FRUITLAND COAL	3004532414	PROD	PROD	14	31N	7W	SESE	FC PA - NMNM 078402D	892000929B
NORTHEAST BLANCO UNIT 480A	FRUITLAND COAL	3004532415	PROD	PROD	11	31N	7W	SWSW	FC PA - NMNM 078402D	892000929B
NORTHEAST BLANCO UNIT 337	DAKOTA	3004532719	PROD	PROD	19	31N	7W	NWSE	DK PA - NMNM 078402C	892000929C
NORTHEAST BLANCO UNIT 337	MESAVERDE	3004532719	PROD	PROD	19	31N	7W	NWSE	MV PA - NMNM 078402A	8920009290
NORTHEAST BLANCO UNIT 042E	DAKOTA	3004532777	PROD	PROD	19	31N	7W	NWSE	DK PA - NMNM 078402C	892000929C
NORTHEAST BLANCO UNIT 066F	DAKOTA	3004532778	PROD	PROD	31	31N	7W	SENW	DK PA - NMNM 078402C	892000929C
NORTHEAST BLANCO UNIT 234	PICTURED CLIFFS	3004532779	PROD	PROD	23	31N	7W	NESE	PC PA - NMNM 078402B	892000929A
NORTHEAST BLANCO UNIT 232	PICTURED CLIFFS	3004532780	PROD	PROD	14	31N	7W	NWSE	PC PA - NMNM 078402B	892000929A
NORTHEAST BLANCO UNIT 235	PICTURED CLIFFS	3004532784	PROD	PROD	24	31N	7W	NESE	PC PA - NMNM 078402B	892000929A
NORTHEAST BLANCO UNIT 229J	PICTURED CLIFFS	3004532785	PROD	PROD	12	31N	7W	SESE	PC PA - NMNM 078402B	892000929A

NORTHEAST BLANCO UNIT 223	PICTURED CLIFFS	3004532787	PROD	PROD	18	31N	6W	NWSW	PC PA - NMNM 078402B	892000929A
NORTHEAST BLANCO UNIT 233	PICTURED CLIFFS	3004532800	PROD	PROD	23	31N	7W	SWNW	PC PA - NMNM 078402B	892000929A
NORTHEAST BLANCO UNIT 071E	DAKOTA	3004532801	PROD	PROD	23	31N	7W	NENE	DK PA - NMNM 078402C	892000929C
NORTHEAST BLANCO UNIT 071E	PICTURED CLIFFS	3004532801	PROD	PROD	23	31N	7W	NENE	PC PA - NMNM 078402B	892000929A
NORTHEAST BLANCO UNIT 338	MESAVERDE	3004532882	PROD	PROD	16	31N	7W	NWNW	MV PA - NMNM 078402A	8920009290
NORTHEAST BLANCO UNIT 224	PICTURED CLIFFS	3004533001	PROD	PROD	19	31N	6W	SEW	PC PA - NMNM 078402B	892000929A
NORTHEAST BLANCO UNIT 229	PICTURED CLIFFS	3004533003	PROD	PROD	12	31N	7W	SENE	PC PA - NMNM 078402B	892000929A
NORTHEAST BLANCO UNIT 434A	FRUITLAND COAL	3004533006	PROD	PROD	23	31N	7W	NWNW	FC PA - NMNM 078402D	892000929B
NORTHEAST BLANCO UNIT 428A	FRUITLAND COAL	3004533007	PROD	PROD	24	31N	7W	NESE	FC PA - NMNM 078402D	892000929B
NORTHEAST BLANCO UNIT 492A	FRUITLAND COAL	3004533099	TA ZONE	TA	12	31N	7W	SESE	FC PA - NMNM 078402D	892000929B
NORTHEAST BLANCO UNIT 237	PICTURED CLIFFS	3004533139	PROD	PROD	26	31N	7W	SESE	PC PA - NMNM 078402B	892000929A
NORTHEAST BLANCO UNIT 230	PICTURED CLIFFS	3004533158	PROD	PROD	13	31N	7W	SENE	PC PA - NMNM 078402B	892000929A
NORTHEAST BLANCO UNIT 471A	FRUITLAND COAL	3004533159	PROD	PROD	25	31N	8W	SWSE	FC PA - NMNM 078402D	892000929B
NORTHEAST BLANCO UNIT 230J	PICTURED CLIFFS	3004533192	PROD	PROD	13	31N	7W	SWSE	PC PA - NMNM 078402B	892000929A
NORTHEAST BLANCO UNIT 228	PICTURED CLIFFS	3004533193	PROD	PROD	14	31N	7W	SENE	PC PA - NMNM 078402B	892000929A
NORTHEAST BLANCO UNIT 454A	FRUITLAND COAL	3004533195	PROD	PROD	33	31N	7W	SWSE	FC PA - NMNM 078402D	892000929B
NORTHEAST BLANCO UNIT 412A	FRUITLAND COAL	3004533211	PROD	PROD	29	31N	7W	NENW	FC PA - NMNM 078402D	892000929B
NORTHEAST BLANCO UNIT 340	DAKOTA	3004533212	TA ZONE	TA	30	31N	7W	SWSE	DK PA - NMNM 078402C	892000929C
NORTHEAST BLANCO UNIT 239	PICTURED CLIFFS	3004533213	PROD	PROD	7	31N	6W	SESW	PC PA - NMNM 078402B	892000929A
NORTHEAST BLANCO UNIT 225	PICTURED CLIFFS	3004533214	PROD	PROD	19	31N	6W	NWSW	PC PA - NMNM 078402B	892000929A
NORTHEAST BLANCO UNIT 042F	DAKOTA	3004533264	PROD	PROD	19	31N	7W	SESW	DK PA - NMNM 078402C	892000929C
NORTHEAST BLANCO UNIT 236	PICTURED CLIFFS	3004533265	PROD	PROD	24	31N	7W	SWSW	PC PA - NMNM 078402B	892000929A
NORTHEAST BLANCO UNIT 450A	FRUITLAND COAL	3004533273	PROD	PROD	32	31N	7W	SEW	FC PA - NMNM 078402D	892000929B
NORTHEAST BLANCO UNIT 049M	DAKOTA	3004533305	PROD	PROD	30	31N	7W	SENE	DK PA - NMNM 078402C	892000929C
NORTHEAST BLANCO UNIT 049M	MESAVERDE	3004533305	PROD	PROD	30	31N	7W	SENE	MV PA - NMNM 078402A	8920009290
NORTHEAST BLANCO UNIT 339	MESAVERDE	3004533339	PROD	PROD	26	31N	7W	SESE	MV PA - NMNM 078402A	8920009290
NORTHEAST BLANCO UNIT 339	PICTURED CLIFFS	3004533339	PROD	PROD	26	31N	7W	SESE	PC PA - NMNM 078402B	892000929A
NORTHEAST BLANCO UNIT 400A	FRUITLAND COAL	3004533467	PROD	PROD	7	31N	6W	SWNW	FC PA - NMNM 078402D	892000929B
NORTHEAST BLANCO UNIT 068M	DAKOTA	3004533474	PROD	PROD	35	31N	7W	NENE	DK PA - NMNM 078402C	892000929C
NORTHEAST BLANCO UNIT 068M	PICTURED CLIFFS	3004533474	PROD	PROD	35	31N	7W	NENE	PC PA - NMNM 078402B	892000929A

NORTHEAST BLANCO UNIT 063M	MESAVERDE	3004533476	PROD	PROD	1	31N	7W	SWSE	MV PA - NMNM 078402A	8920009290
NORTHEAST BLANCO UNIT 063M	PICTURED CLIFFS	3004533476	PROD	PROD	1	31N	7W	SWSE	PC PA - NMNM 078402B	892000929A
NORTHEAST BLANCO UNIT 240	PICTURED CLIFFS	3004533495	PROD	PROD	18	31N	6W	NWNW	PC PA - NMNM 078402B	892000929A
NORTHEAST BLANCO UNIT 323N	DAKOTA	3004533496	PROD	PROD	19	31N	6W	NWSW	DK PA - NMNM 078402C	892000929C
NORTHEAST BLANCO UNIT 323N	MESAVERDE	3004533496	PROD	PROD	19	31N	6W	NWSW	MV PA - NMNM 078402A	8920009290
NORTHEAST BLANCO UNIT 341	MESAVERDE	3004533613	PROD	PROD	16	31N	7W	NWNE	MV PA - NMNM 078402A	8920009290
NORTHEAST BLANCO UNIT 245	PICTURED CLIFFS	3004533639	PROD	PROD	26	31N	7W	SWSW	PC PA - NMNM 078402B	892000929A
NORTHEAST BLANCO UNIT 226	PICTURED CLIFFS	3004533649	PROD	PROD	20	31N	6W	SWNW	PC PA - NMNM 078402B	892000929A
NORTHEAST BLANCO UNIT 425A	FRUITLAND COAL	3004533663	PROD	PROD	7	30N	7W	NENE	FC PA - NMNM 078402D	892000929B
NORTHEAST BLANCO UNIT 241	PICTURED CLIFFS	3004533664	PROD	PROD	18	31N	6W	NESE	PC PA - NMNM 078402B	892000929A
NORTHEAST BLANCO UNIT 321N	DAKOTA	3004533665	PROD	PROD	18	31N	6W	NESE	DK PA - NMNM 078402C	892000929C
NORTHEAST BLANCO UNIT 321N	MESAVERDE	3004533665	PROD	PROD	18	31N	6W	NESE	MV PA - NMNM 078402A	8920009290
NORTHEAST BLANCO UNIT 451A	FRUITLAND COAL	3004533670	PROD	PROD	5	30N	7W	NWSW	FC PA - NMNM 078402D	892000929B
NORTHEAST BLANCO UNIT 473A	FRUITLAND COAL	3004533689	PROD	PROD	36	31N	8W	SESE	FC PA - NMNM 078402D	892000929B
NORTHEAST BLANCO UNIT 416A	FRUITLAND COAL	3004533762	PROD	PROD	21	31N	7W	SWSE	FC PA - NMNM 078402D	892000929B
NORTHEAST BLANCO UNIT 051M	MESAVERDE	3004533763	PROD	PROD	29	31N	7W	NESW	MV PA - NMNM 078402A	8920009290
NORTHEAST BLANCO UNIT 051M	DAKOTA	3004533763	PROD	PROD	29	31N	7W	NESW	Lease: NMSF 079045	820790450
NORTHEAST BLANCO UNIT 452A	FRUITLAND COAL	3004533816	PROD	PROD	15	31N	7W	NWSE	FC PA - NMNM 078402D	892000929B
NORTHEAST BLANCO UNIT 002M	MESAVERDE	3004533820	PROD	PROD	20	31N	7W	SENW	MV PA - NMNM 078402A	8920009290
NORTHEAST BLANCO UNIT 337M	DAKOTA	3004533821	PROD	PROD	20	31N	7W	SWSW	DK PA - NMNM 078402C	892000929C
NORTHEAST BLANCO UNIT 337M	MESAVERDE	3004533821	PROD	PROD	20	31N	7W	SWSW	MV PA - NMNM 078402A	8920009290
NORTHEAST BLANCO UNIT 476A	FRUITLAND COAL	3004533826	PROD	PROD	22	31N	7W	SENW	FC PA - NMNM 078402D	892000929B
NORTHEAST BLANCO UNIT 402A	FRUITLAND COAL	3004533842	PROD	PROD	5	30N	7W	NENE	FC PA - NMNM 078402D	892000929B
NORTHEAST BLANCO UNIT 041E	DAKOTA	3004533941	PROD	PROD	25	31N	8W	SWNE	DK PA - NMNM 078402C	892000929C
NORTHEAST BLANCO UNIT 340M	DAKOTA	3004533977	PROD	PROD	31	31N	7W	NWSE	DK PA - NMNM 078402C	892000929C
NORTHEAST BLANCO UNIT 340M	MESAVERDE	3004533977	PROD	PROD	31	31N	7W	NWSE	MV PA - NMNM 078402A	8920009290
NORTHEAST BLANCO UNIT 343	DAKOTA	3004534127	PROD	PROD	16	31N	7W	NWSE	DK PA - NMNM 078402C	892000929C
NORTHEAST BLANCO UNIT 343	MESAVERDE	3004534127	PROD	PROD	16	31N	7W	NWSE	MV PA - NMNM 078402A	8920009290
NORTHEAST BLANCO UNIT 306M	DAKOTA	3004534128	PROD	PROD	26	31N	7W	NWNW	DK PA - NMNM 078402C	892000929C
NORTHEAST BLANCO UNIT 306M	MESAVERDE	3004534128	PROD	PROD	26	31N	7W	NWNW	MV PA - NMNM 078402A	8920009290

NORTHEAST BLANCO UNIT 012N	DAKOTA	3004534129	PROD	PROD	18	30N	7W	SENW	DK PA - NMNM 078402C	892000929C
NORTHEAST BLANCO UNIT 012N	MESAVERDE	3004534129	PROD	PROD	18	30N	7W	SENW	MV PA - NMNM 078402A	8920009290
NORTHEAST BLANCO UNIT 047N	DAKOTA	3004534137	PROD	PROD	32	31N	7W	NESW	DK PA - NMNM 078402C	892000929C
NORTHEAST BLANCO UNIT 047N	MESAVERDE	3004534137	PROD	PROD	32	31N	7W	NESW	MV PA - NMNM 078402A	8920009290
NORTHEAST BLANCO UNIT 488A	FRUITLAND COAL	3004534138	TA ZONE	TA	24	31N	7W	SWNW	FC PA - NMNM 078402D	892000929B
NORTHEAST BLANCO UNIT 346	DAKOTA	3004534144	PROD	PROD	36	31N	8W	SESE	DK PA - NMNM 078402C	892000929C
NORTHEAST BLANCO UNIT 348	MESAVERDE	3004534205	PROD	PROD	35	31N	7W	NENE	MV PA - NMNM 078402A	8920009290
NORTHEAST BLANCO UNIT 348	DAKOTA	3004534205	PROD	PROD	35	31N	7W	NENE	NM State Lease E0-0505-15	E0-0505-15
NORTHEAST BLANCO UNIT 047M	DAKOTA	3004534296	PROD	PROD	32	31N	7W	NENW	DK PA - NMNM 078402C	892000929C
NORTHEAST BLANCO UNIT 047M	MESAVERDE	3004534296	PROD	PROD	32	31N	7W	NENW	MV PA - NMNM 078402A	8920009290
NORTHEAST BLANCO UNIT 338M	DAKOTA	3004534297	PROD	PROD	16	31N	7W	NESW	DK PA - NMNM 078402C	892000929C
NORTHEAST BLANCO UNIT 338M	MESAVERDE	3004534297	PROD	PROD	16	31N	7W	NESW	MV PA - NMNM 078402A	8920009290
NORTHEAST BLANCO UNIT 250	PICTURED CLIFFS	3004534299	PROD	PROD	35	31N	7W	NWNW	PC PA - NMNM 078402B	892000929A
NORTHEAST BLANCO UNIT 324P	DAKOTA	3004534301	PROD	PROD	14	31N	7W	NWSW	DK PA - NMNM 078402C	892000929C
NORTHEAST BLANCO UNIT 324P	MESAVERDE	3004534301	PROD	PROD	14	31N	7W	NWSW	MV PA - NMNM 078402A	8920009290
NORTHEAST BLANCO UNIT 344	DAKOTA	3004534325	PROD	PROD	26	31N	7W	SENE	DK PA - NMNM 078402C	892000929C
NORTHEAST BLANCO UNIT 344	MESAVERDE	3004534325	PROD	PROD	26	31N	7W	SENE	MV PA - NMNM 078402A	8920009290
NORTHEAST BLANCO UNIT 324N	DAKOTA	3004534340	PROD	PROD	11	31N	7W	SWSW	DK PA - NMNM 078402C	892000929C
NORTHEAST BLANCO UNIT 324N	MESAVERDE	3004534340	PROD	PROD	11	31N	7W	SWSW	MV PA - NMNM 078402A	8920009290
NORTHEAST BLANCO UNIT 350	DAKOTA	3004534400	PROD	PROD	6	30N	7W	NWNW	DK PA - NMNM 078402C	892000929C
NORTHEAST BLANCO UNIT 347M	MESAVERDE	3004534606	PROD	PROD	36	31N	8W	SWNW	MV PA - NMNM 078402A	8920009290
NORTHEAST BLANCO UNIT 347M	DAKOTA	3004534606	PROD	PROD	36	31N	8W	SWNW	NM State Lease E0-3707-17	E0-3707-17
NORTHEAST BLANCO UNIT 421A	FRUITLAND COAL	3004534610	PROD	PROD	33	30N	7W	SWSE	FC PA - NMNM 078402D	892000929B
NORTHEAST BLANCO UNIT 252H	PICTURED CLIFFS	3004534611	PROD	PROD	7	31N	6W	SWSE	PC PA - NMNM 078402B	892000929A
NORTHEAST BLANCO UNIT 472A	FRUITLAND COAL	3004534648	PROD	PROD	29	31N	7W	NESE	FC PA - NMNM 078402D	892000929B
NORTHEAST BLANCO UNIT 336	MESAVERDE	3004534649	PROD	PROD	28	31N	7W	SWSE	MV PA - NMNM 078402A	8920009290
NORTHEAST BLANCO UNIT 336	DAKOTA	3004534649	PROD	PROD	28	31N	7W	SWSE	Lease: NMSF 079043	820790430
NORTHEAST BLANCO UNIT 255H	PICTURED CLIFFS	3004534656	PROD	PROD	6	31N	6W	SWSW	PC PA - NMNM 078402B	892000929A
NORTHEAST BLANCO UNIT 037B	MESAVERDE	3004534657	PROD	PROD	5	30N	7W	NWSW	MV PA - NMNM 078402A	8920009290
NORTHEAST BLANCO UNIT 037B	DAKOTA	3004534657	PROD	PROD	5	30N	7W	NWSW	Lease: NMSF 079042	820790420

NORTHEAST BLANCO UNIT 068N	MESAVERDE	3004534677	PROD	PROD	35	31N	7W	SWNW	MV PA - NMNM 078402A	8920009290
NORTHEAST BLANCO UNIT 068N	PICTURED CLIFFS	3004534677	PROD	PROD	35	31N	7W	SWNW	Lease: NMSF 079003	820790030
NORTHEAST BLANCO UNIT 350E	DAKOTA	3004534746	PROD	PROD	1	30N	7W	NESE	DK PA - NMNM 078402C	892000929C
NORTHEAST BLANCO UNIT 602 #001H	MANCOS	3004535775	PROD	PROD	12	31N	7W	NWNW	MC PA - NMNM106352744	NMNM10635 2744
NORTHEAST BLANCO UNIT 604 #001H	MANCOS	3004535793	PROD	PROD	13	31N	7W	SWNW	MC PA - NMNM106352744	NMNM10635 2744
NORTHEAST BLANCO UNIT 604 #002H	MANCOS	3004535794	PROD	PROD	13	31N	7W	SWNW	MC PA - NMNM106352744	NMNM10635 2744
NORTHEAST BLANCO UNIT 604 #003H	MANCOS	3004535829	PROD	PROD	13	31N	7W	SWNW	MC PA - NMNM106352744	NMNM10635 2744
NORTHEAST BLANCO UNIT 605 #001H	MANCOS	3004535851	PROD	PROD	11	31N	7W	SESE	MC PA - NMNM106352744	NMNM10635 2744
NORTHEAST BLANCO UNIT 605 #002H	MANCOS	3004535857	PROD	PROD	11	31N	7W	SESE	MC PA - NMNM106352744	NMNM10635 2744
NORTHEAST BLANCO UNIT 044	MESAVERDE	3004560186	PROD	PROD	4	30N	7W	NWNE	MV PA - NMNM 078402A	8920009290
NORTHEAST BLANCO UNIT 045	MESAVERDE	3004560187	PROD	PROD	5	30N	7W	NENE	MV PA - NMNM 078402A	8920009290
NORTHEAST BLANCO UNIT 051	MESAVERDE	3004560247	PROD	PROD	29	31N	7W	SESW	MV PA - NMNM 078402A	8920009290
NORTHEAST BLANCO UNIT 047	MESAVERDE	3004560248	PROD	PROD	32	31N	7W	NESW	MV PA - NMNM 078402A	8920009290
NORTHEAST BLANCO UNIT 048	MESAVERDE	3004560249	PROD	PROD	32	31N	7W	SENE	MV PA - NMNM 078402A	8920009290

STATUS OF WELLS – “Non-Unit” Wells

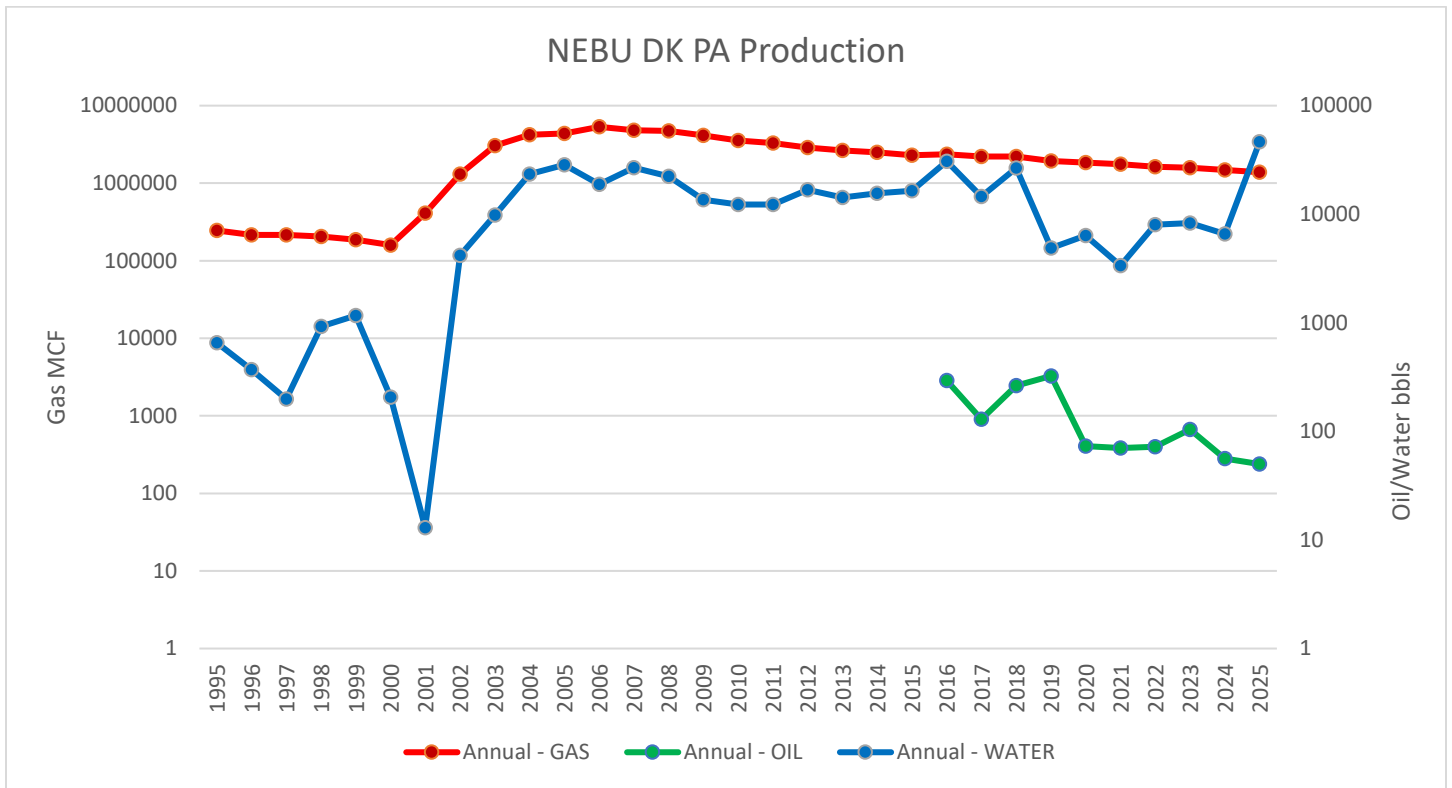
Well Name Number	Reservoir	API	Well Status	Surface Section	Surface Township	Surface Range	Surface Qtr Qtr	ONRR Reporting
NORTHEAST BLANCO UNIT 057	PICTURED CLIFFS	3004510640	PROD	21	31N	7W	NWNE	Lease: NMSF 079045
NORTHEAST BLANCO UNIT 208	PICTURED CLIFFS	3004524855	PROD	12	31N	7W	SESW	CA: NMNM 97728
NORTHEAST BLANCO UNIT 001M	DAKOTA	3004532247	PROD	27	31N	7W	SWSE	Lease: NMSF 079003
NORTHEAST BLANCO UNIT 231J	PICTURED CLIFFS	3004532802	SI	14	31N	7W	NWSW	CA: NMNM 116873
NORTHEAST BLANCO UNIT 233J	PICTURED CLIFFS	3004533194	PROD	23	31N	7W	NESW	Lease: NMSF 079010
NORTHEAST BLANCO UNIT 247	PICTURED CLIFFS	3004534319	SI	20	31N	6W	NWNW	Lease: NMSF 078988
NORTHEAST BLANCO UNIT 251H	PICTURED CLIFFS	3004534646	PROD	6	31N	6W	SWSE	Lease: NMSF 078988
NORTHEAST BLANCO UNIT 353	DAKOTA	3004534647	PROD	5	30N	7W	NENW	Lease: NMSF 079042
NORTHEAST BLANCO UNIT 257H	PICTURED CLIFFS	3004534650	PROD	35	31N	7W	SWNW	Lease: NMSF 079003
NORTHEAST BLANCO UNIT 256H	PICTURED CLIFFS	3004534685	SI	34	31N	7W	NWNE	Lease: NMSF 079003
NORTHEAST BLANCO UNIT 354E	DAKOTA	3004534700	PROD	32	31N	7W	SWNE	N/A: NM State Lease
NORTHEAST BLANCO UNIT 001	DAKOTA	3004560245	PROD	27	31N	7W	SENE	Lease: NMSF 079003
NORTHEAST BLANCO UNIT 602 #002H	MANCOS	3004538325	PROD	12	31N	7W	NWNW	Currently Lease basis MC PA TBD
NORTHEAST BLANCO UNIT 602 #004H	MANCOS	3004538314	PROD	12	31N	7W	NWNW	Currently Lease basis MC PA TBD
NORTHEAST BLANCO UNIT 604 #004H	MANCOS	3004538359	PROD	13	31N	7W	SWNW	Currently Lease basis MC PA TBD
NORTHEAST BLANCO UNIT 604 #006H	MANCOS	3004538357	PROD	13	31N	7W	SWNW	Currently Lease basis MC PA TBD
NORTHEAST BLANCO UNIT 604 #008H	MANCOS	3004538355	PROD	13	31N	7W	SWNW	Currently Lease basis MC PA TBD

PRESSURE OBSERVATION WELLS (“POW”)

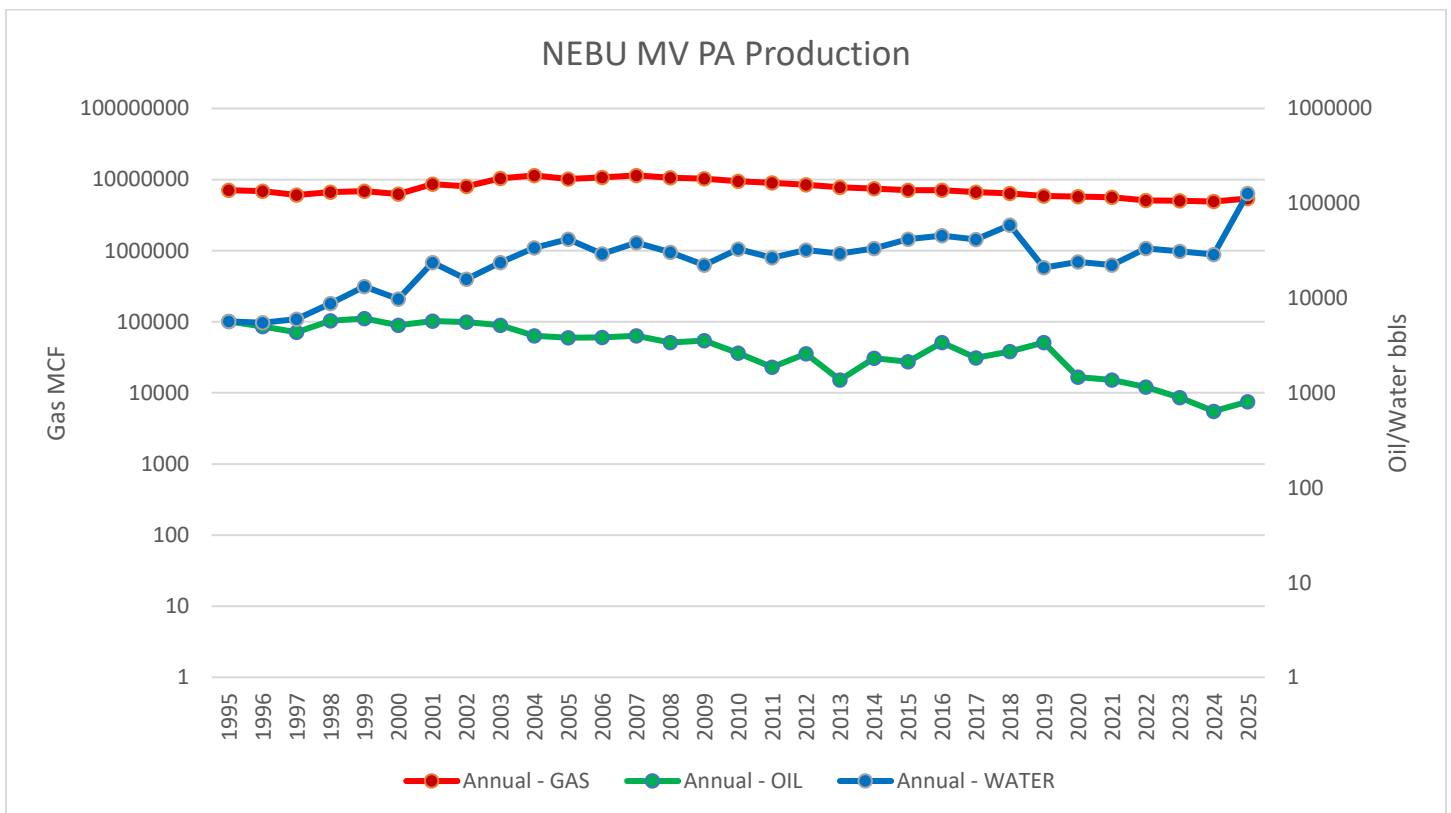
Well Name Number	Reservoir	API	County	Well Status	Surface Section	Surface Township	Surface Range	Surface Qtr Qtr
NORTHEAST BLANCO UNIT 413	FRUITLAND COAL	3003924216	RIO ARRIBA	POW	20	30N	7W	NWNE
NORTHEAST BLANCO UNIT 425	FRUITLAND COAL	3003924322	RIO ARRIBA	POW	8	30N	7W	NESW
NORTHEAST BLANCO UNIT 427	FRUITLAND COAL	3003924326	RIO ARRIBA	POW	16	30N	7W	SESW
NORTHEAST BLANCO UNIT 429	FRUITLAND COAL	3003924356	RIO ARRIBA	POW	17	30N	7W	NWNE
NORTHEAST BLANCO UNIT 218	FRUITLAND COAL	3004525709	SAN JUAN	POW	16	31N	7W	NWNW
NORTHEAST BLANCO UNIT 212	FRUITLAND COAL	3004526328	SAN JUAN	POW	1	31N	7W	SWSE
NORTHEAST BLANCO UNIT 211	FRUITLAND COAL	3004526368	SAN JUAN	POW	27	31N	7W	NENW
NORTHEAST BLANCO UNIT 400	FRUITLAND COAL	3004526900	SAN JUAN	POW	7	31N	6W	SWSW
NORTHEAST BLANCO UNIT 404	FRUITLAND COAL	3004526901	SAN JUAN	POW	34	31N	7W	SWNW
NORTHEAST BLANCO UNIT 306	FC/DK	3004528644	SAN JUAN	POW	26	31N	7W	NWNW
NORTHEAST BLANCO UNIT 055E	MC/DK	3004532260	SAN JUAN	POW	22	31N	7W	NESE
NORTHEAST BLANCO UNIT 354	MC/DK	3004534658	SAN JUAN	POW	32	31N	7W	NWSE

30-YEAR PRODUCTION GRAPHS BY PA

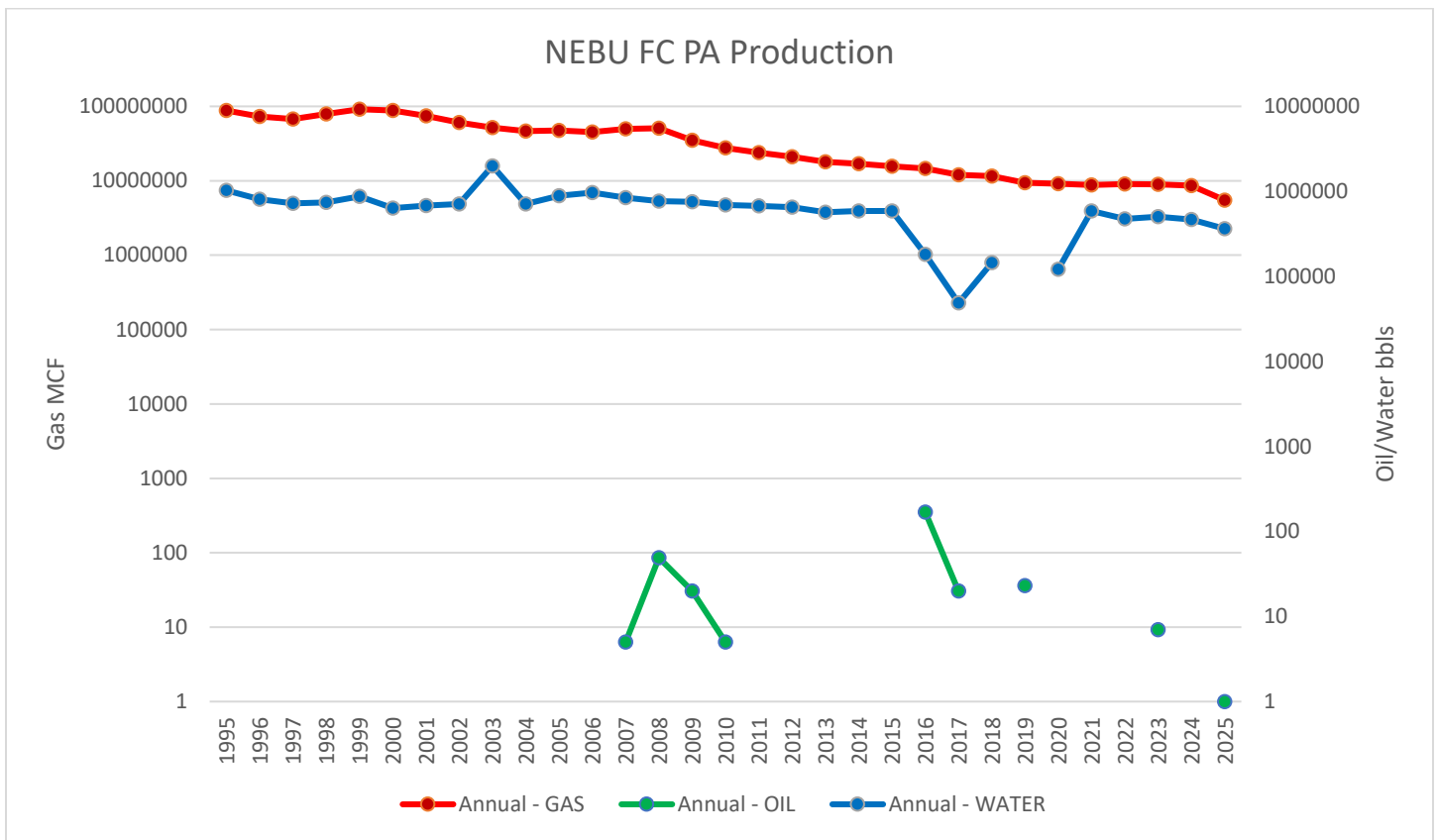
NEBU DAKOTA PA – NMNM105544614 (Legacy No: NMNM 078402C)



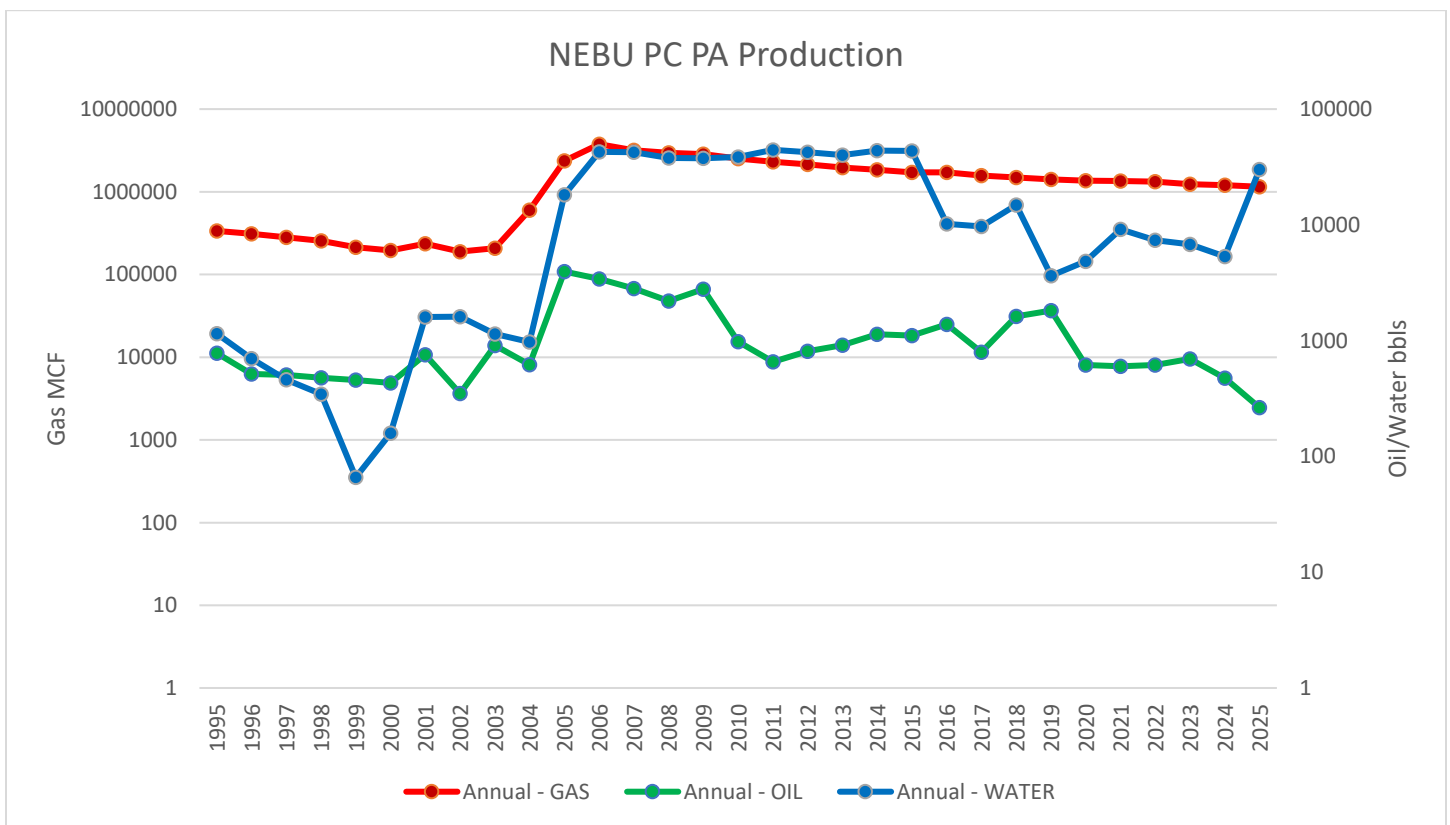
NEBU MESAVERDE PA – NMNM105457689 (Legacy No: NMNM 078402A)



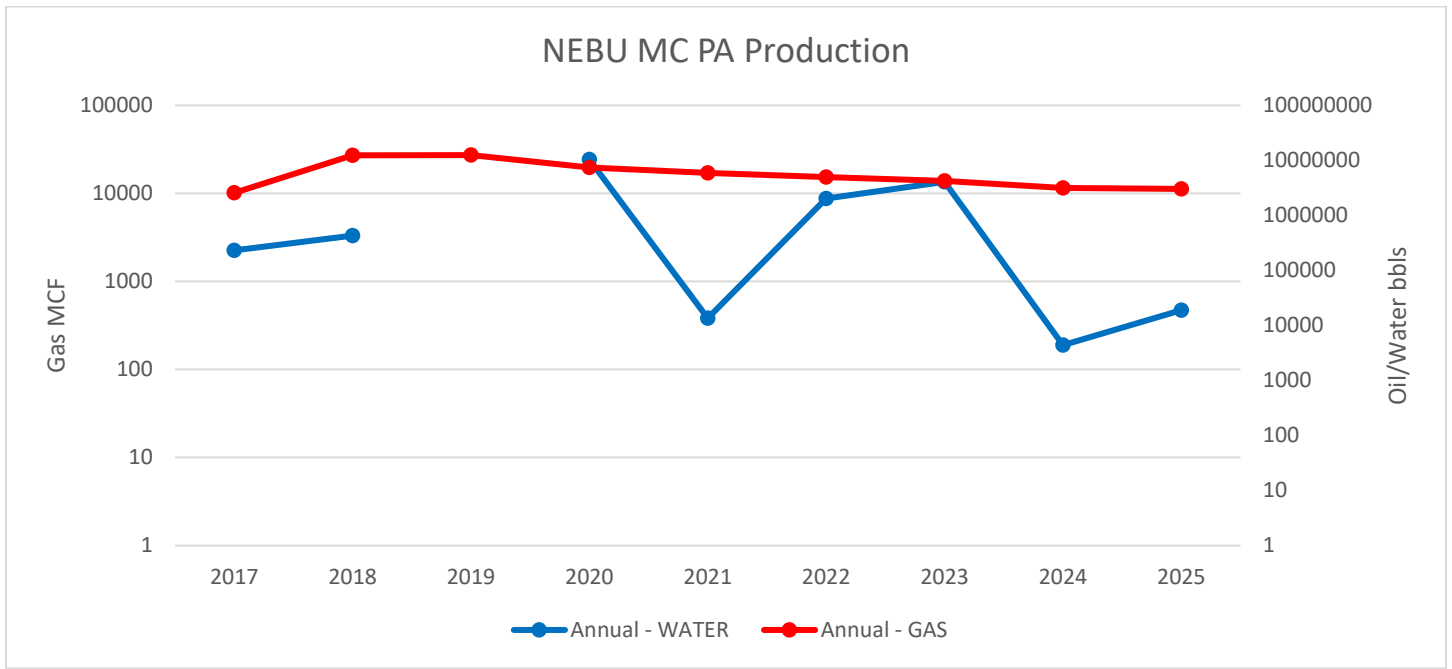
NEBU FRUITLAND COAL PA – NMNM105412553 (Legacy No: NMNM 078402D)



NEBU PICTURED CLIFFS PA – NMNM105467560 (Legacy No: NMNM 078402B)

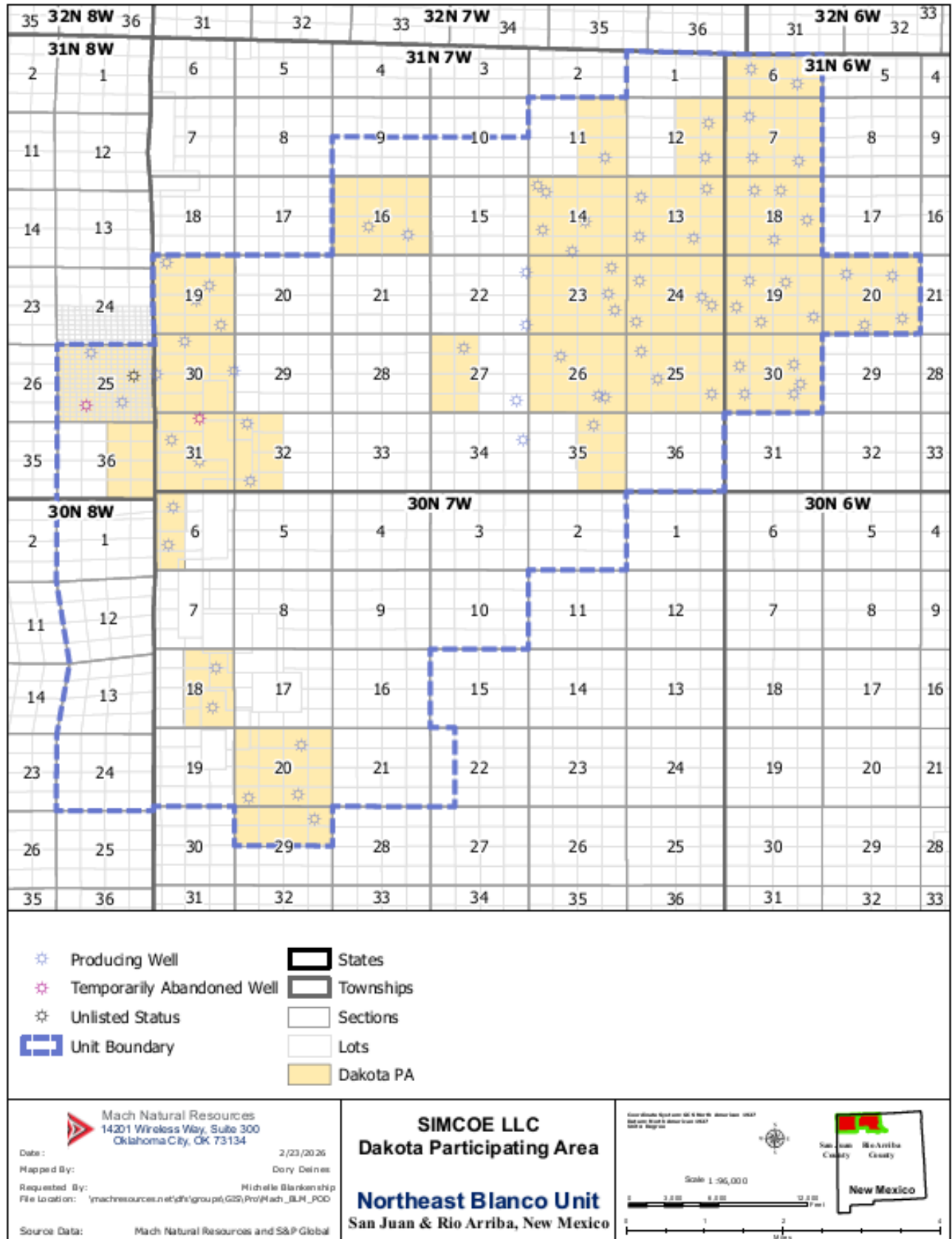


NEBU MANCOS PA – NMNM106352744

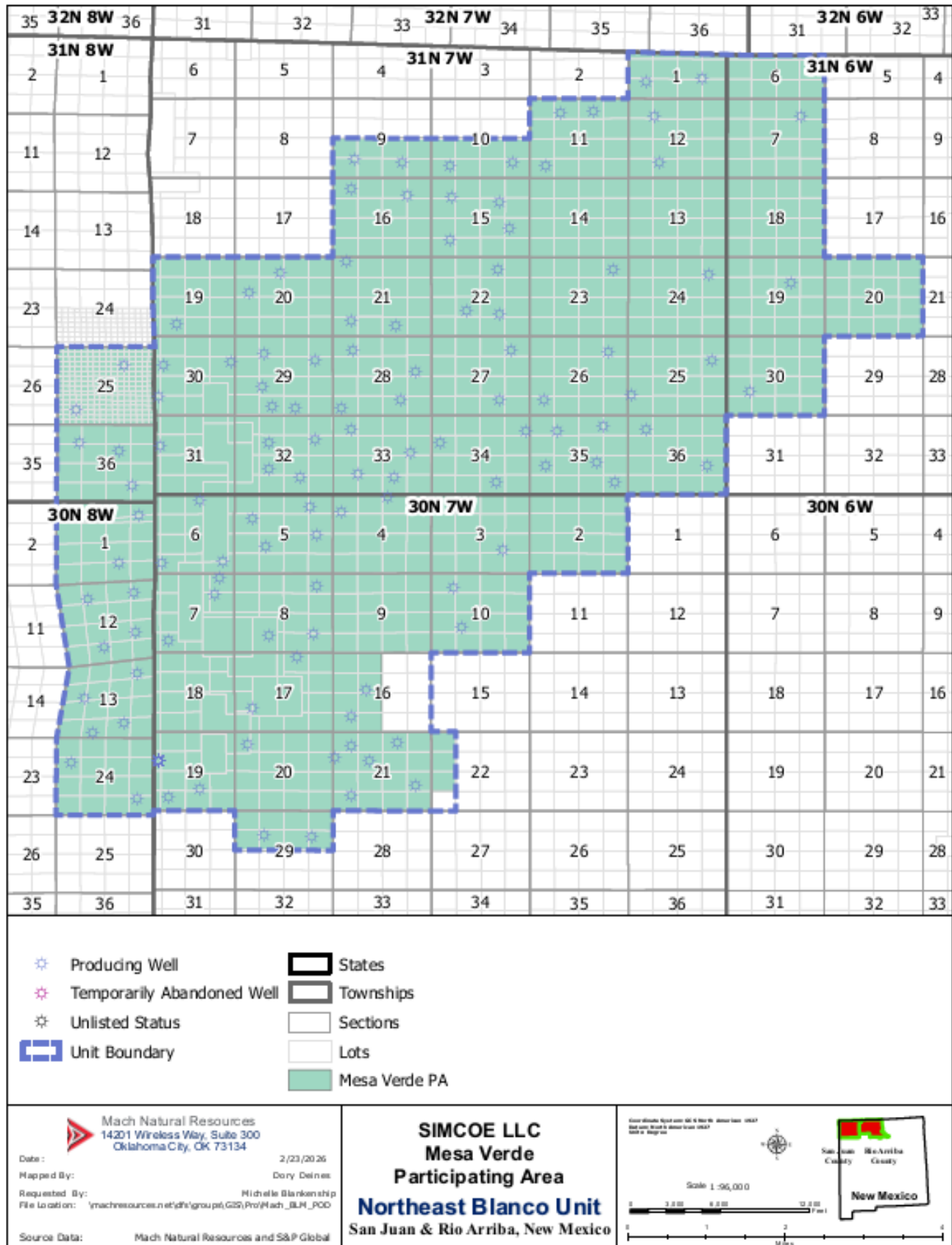


MAPS OF PARTICIPATING AREAS

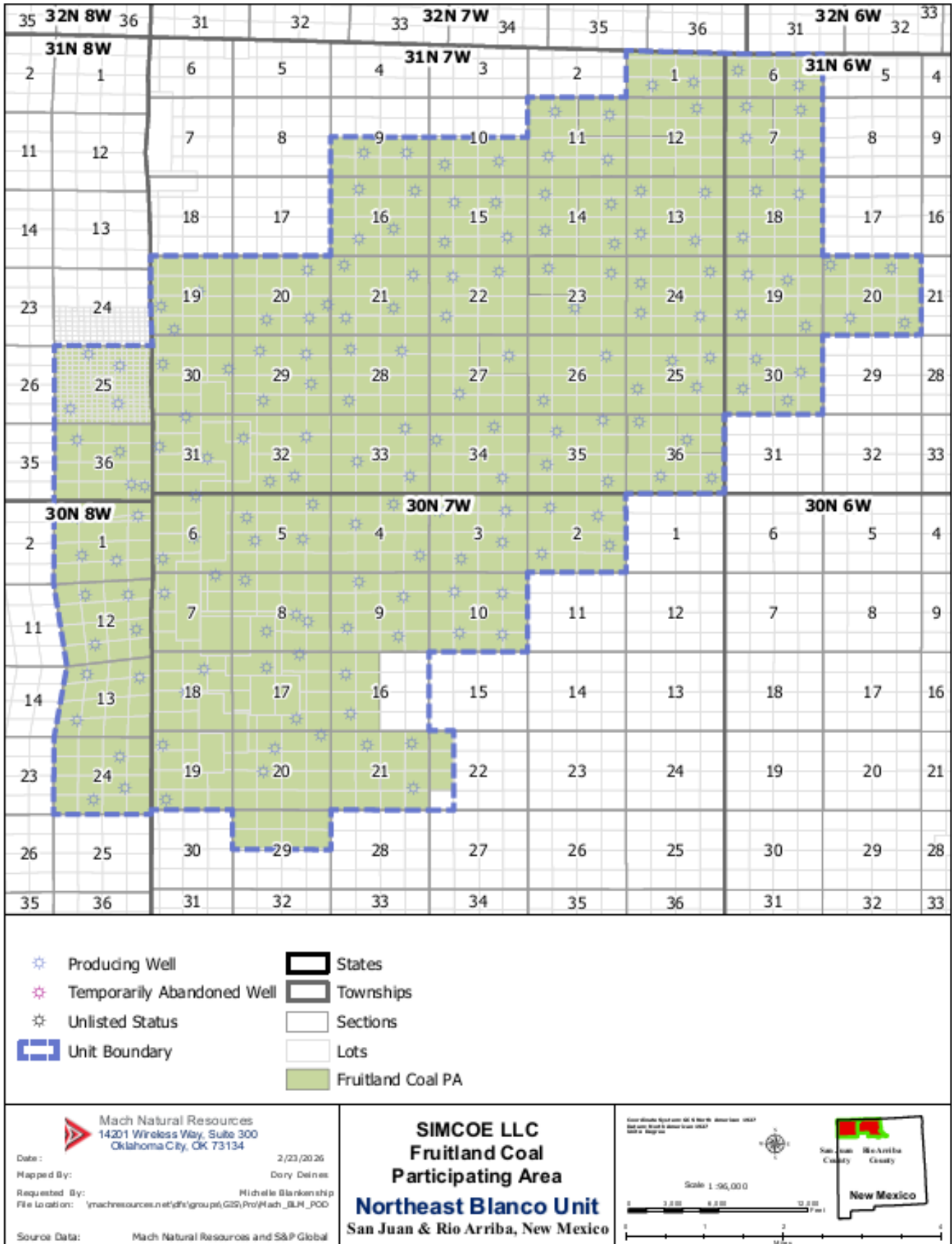
DAKOTA PARTICIPATING AREA
 NMNM105544614 (Legacy No: NMNM 078402C)



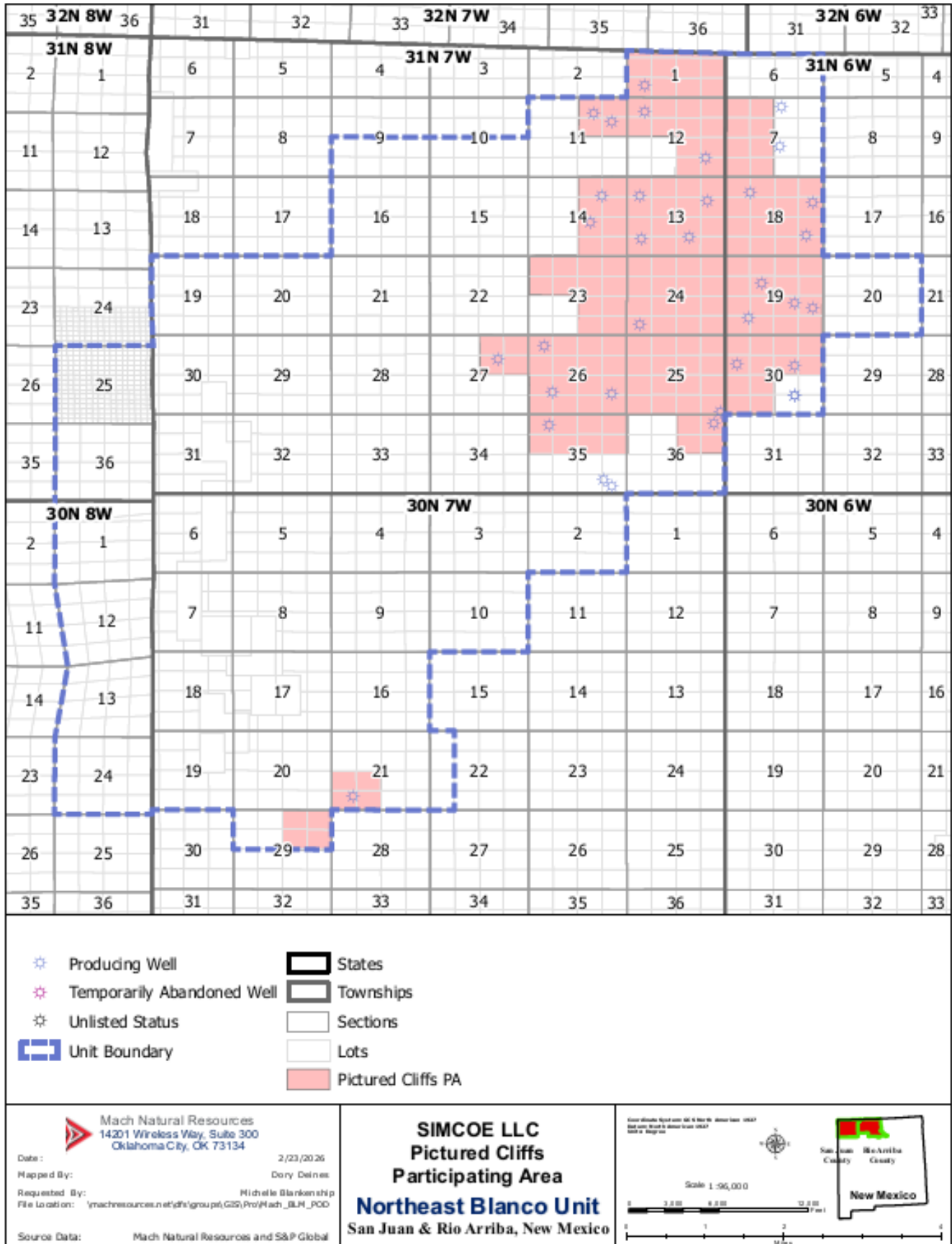
MESAVERDE PARTICIPATING AREA
 NMNM105457689 (Legacy No: NMNM 078402A)



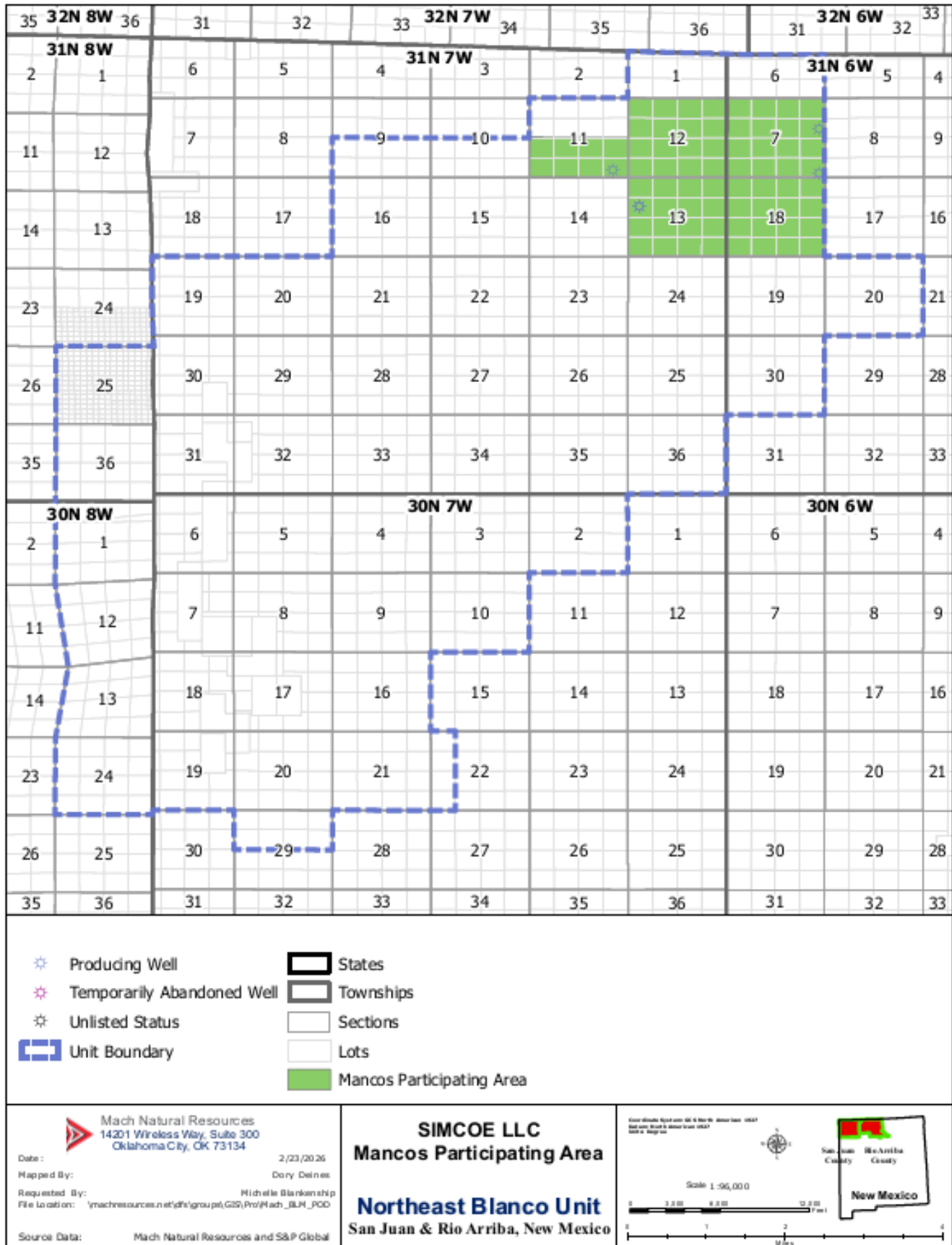
FRUITLAND COAL PARTICIPATING AREA
 NMNM105412553 (Legacy No: NMNM 078402D)



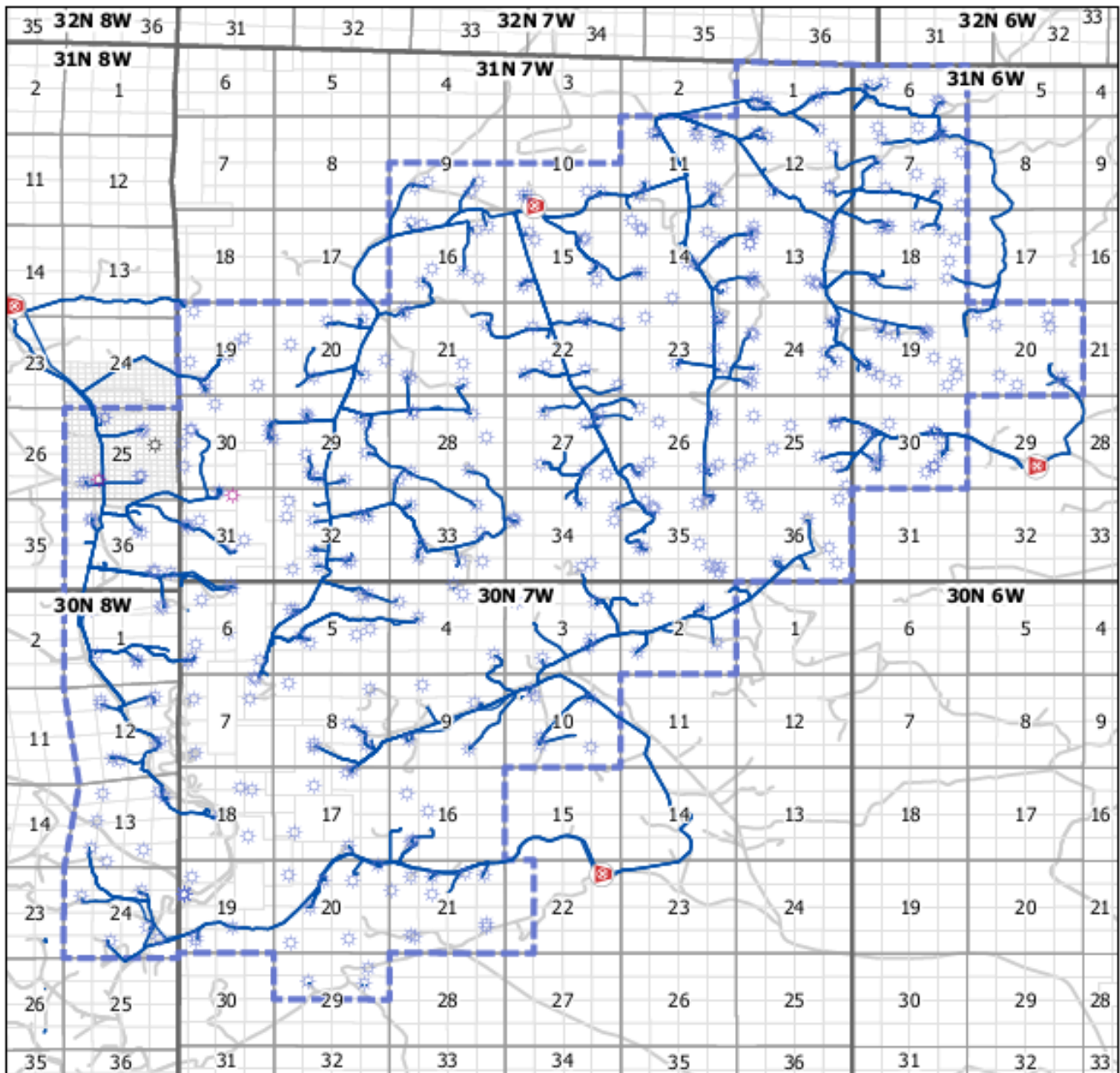
PICTURED CLIFFS PARTICIPATING AREA
 NMNM105467560 (Legacy No: NMNM 078402B)



MANCOS PARTICIPATING AREA
NMNM106352744



NEBU INFRASTRUCTURE MAP



- Producing Well
- Temporarily Abandoned Well
- Unlisted Status
- CDP
- SIMCOE Operated Pipeline
- Lease Roads
- Unit Boundary
- States
- Townships
- Sections
- Lots

Mach Natural Resources
14201 Wireless Way, Suite 300
Oklahoma City, OK 73134

Date: 2/23/2026
Mapped By: Dory Delnes
Requested By: Michele Blankenship
File Location: \machresources.net\dfs\group\GIS\Proj\Mach_BLM_POD
Source Data: Mach Natural Resources and S&P Global

SIMCOE LLC
Infrastructure

Northeast Blanco Unit
San Juan & Rio Arriba, New Mexico

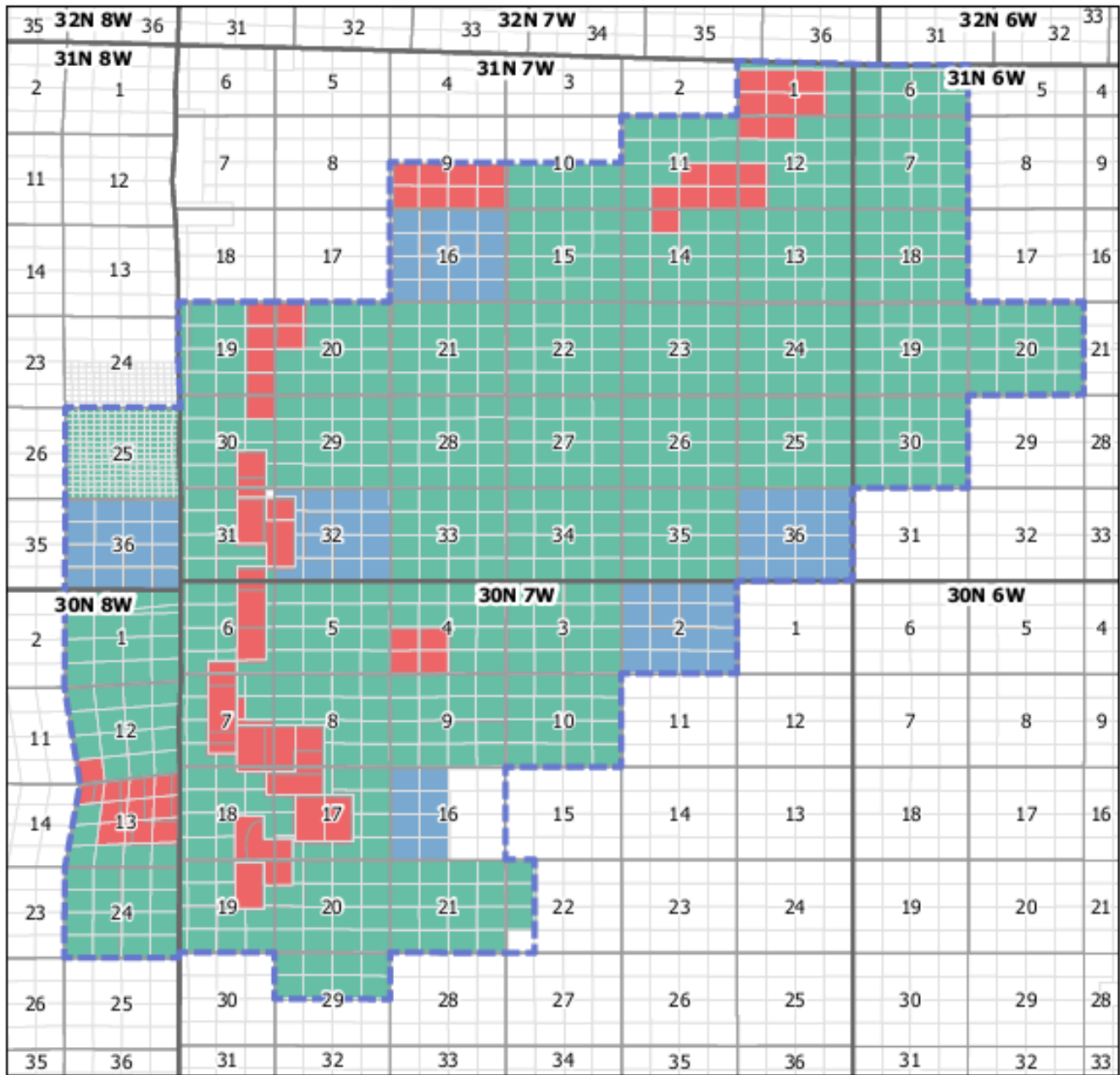
Coordinate System: NAD 83
Datum: North American Datum of 1983
Units: Meter
Projection: UTM
Zone: 18N



Scale: 1:96,000



NEBU LEASE TYPE MAP



- Unit Boundary
- FEDERAL
- PRIVATE
- STATE
- TRIBAL
- States
- Townships
- Sections
- Lots

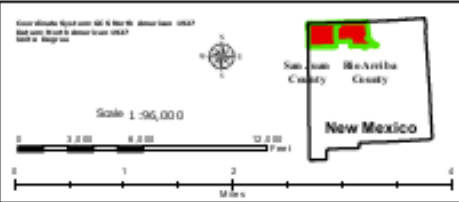
Mach Natural Resources
 14201 Wireless Way, Suite 300
 Oklahoma City, OK 73134

Date: 2/23/2026
 Mapped By: Dory Delnes
 Requested By: Michele Blankenship
 File Location: \\machresources.net\dfs\group\GIS\Proj\Mach_BLN_POD

Source Data: Mach Natural Resources and S&P Global

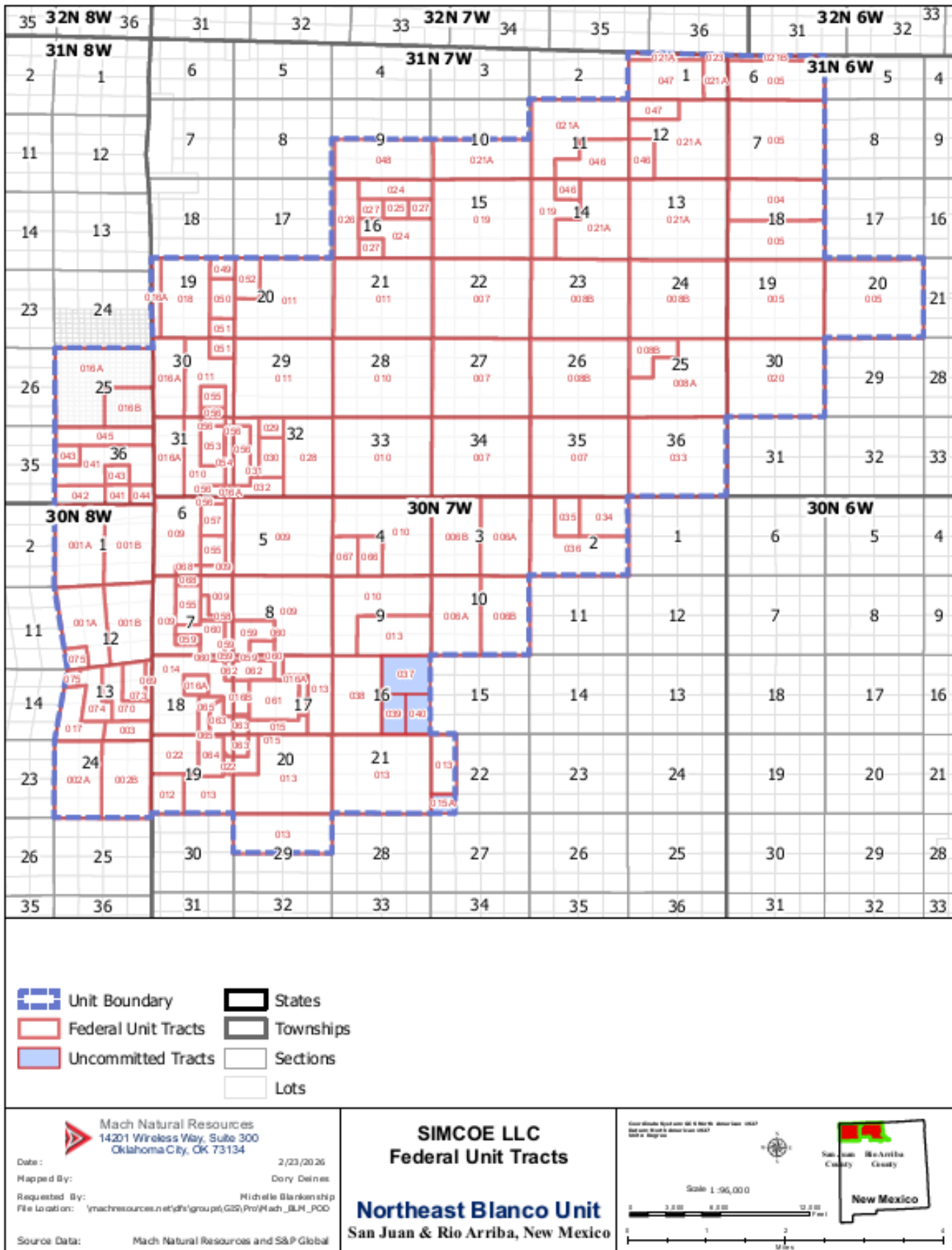
SIMCOE LLC
Lease Map

Northeast Blanco Unit
 San Juan & Rio Arriba, New Mexico



*There are no Tribal Leases in NEBU. Lands not colored by Lease type are uncommitted tracts.

NEBU MAP OF UNIT TRACTS



Note: Private Tracts 71A, 71B, and 72 all in the SE/4 of Section 13, T30N-R8W were too small to depict.
Uncommitted Tracts: 15A, 37, 39, 40

Sante Fe Main Office
Phone: (505) 476-3441

General Information
Phone: (505) 629-6116

Online Phone Directory
<https://www.emnrd.nm.gov/ocd/contact-us>

State of New Mexico
Energy, Minerals and Natural Resources
Oil Conservation Division
1220 S. St Francis Dr.
Santa Fe, NM 87505

CONDITIONS

Action 565675

CONDITIONS

Operator: SIMCOE LLC 1199 Main Ave., Suite 101 Durango, CO 81301	OGRID: 329736
	Action Number: 565675
	Action Type: [HEAR] Order Compliance/Progress Report (ORDER COMPLIANCE REPORT)

CONDITIONS

Created By	Condition	Condition Date
dmcclure	ACCEPTED FOR RECORD	4/8/2026