



February 26, 2026

Certified Tracking #:9214 8969 0099 9790 1854 0199 17

Attn: Kyle Paradis
Bureau of Land Management
301 Dinosaur Trail
Santa Fe, NM 87508

Attn: Commissioner of Public Lands
New Mexico State Land Office
P.O Box 1148
Santa Fe, NM 87504

New Mexico Oil Conservation Division
1220 S. Saint Francis Drive
Santa Fe, NM 87505

Re: 2026 Plan of Development
San Juan 28-7 Unit (NMNM078413X)
Rio Arriba County, New Mexico

Ladies & Gentleman:

Hilcorp Energy Company, as Operator, hereby tenders the enclosed 2026 Plan of Development ("POD") and 2025 summary/review of operations for your review along with accompanying well status lists and participating area production graphs.

In accordance with the subject Unit Agreement, please signify your approval and/or consent by executing and returning a copy of the attached approval page to the undersigned.

If you have any questions or concerns regarding this matter, please do not hesitate to contact me at the email or number provided in the footer below.

Sincerely,

A handwritten signature in blue ink that reads 'Gatewood D. Brown'.

Gatewood D. Brown
Senior Landman – New Mexico

1111 Travis Street, Houston, TX 77002
Phone: (713) 289-2767 gabrown@hilcorp.com



**San Juan 28-7 Unit (NMNM078413X)
2026 PLAN OF DEVELOPMENT APPROVALS**

Bureau of Land Management

Date

New Mexico Oil Conservation Division

Date

New Mexico Commissioner of Public Lands

Date

1111 Travis Street, Houston, TX 77002
Phone: (713) 289-2767 gabrown@hilcorp.com

**2026 PLAN OF DEVELOPMENT
SAN JUAN 28-7 UNIT
NMNM-078413X
RIO ARRIBA COUNTY, NEW MEXICO**

Previous Year Operations:

Drilling: Hilcorp Energy Company (“Hilcorp”) did not drill any new wells in 2025.

Recompletions: Hilcorp executed the following recompletions in 2025:

| Well Name | API | Section | Township | Range | Type |
|-------------------------|------------|---------|----------|-------|--------------------------|
| SAN JUAN 28-7 UNIT 024A | 3003921946 | 14 | 28N | 07W | FRC UPHOLE RECOMPLETE |
| SAN JUAN 28-7 UNIT 164F | 3003927031 | 13 | 28N | 07W | FRC UPHOLE RECOMPLETE |
| SAN JUAN 28-7 UNIT 199M | 3003926718 | 19 | 28N | 07W | FRC CH UPHOLE RECOMPLETE |

Plug Back: Hilcorp did not plug back any wells in 2025.

Conversions: Hilcorp did not convert any wells in 2025.

Plug & Abandonment: Hilcorp did not plug and abandon any wells in 2025:

Participating Areas

Paying Well Determination: Hilcorp did not submit any well for paying determination in 2025.

PA Application Submitted or Approved: Hilcorp did not submit a PA Application in 2025.

Surface Disturbing Activities Completed: Hilcorp did not create any new surface disturbances in 2025.

Water Use: Hilcorp executed three recompletes in 2025.

Fresh Water:

Drilling: N/A

Completion: Hilcorp used approximately 3,971 barrels for the recompletions.

Fresh Water Storage:

Drilling: N/A

Completion: N/A

Water Transfer:

Drilling: N/A

Completion: N/A

Produced Water:

Drilling: N/A

Completion: N/A

Disposal:

| SWD Well Name | API Number | Legal Description |
|---------------|------------|-------------------|
| N/A | N/A | N/A |

2025 Water Disposal Data

| Facility | Total (BBL) | Daily Avg (BPD) | Mode of Transport (Piped, Trucked, Both) |
|----------|-------------|-----------------|--|
| N/A | N/A | N/A | N/A |

Planned Year Operations:

Drilling: Hilcorp anticipates the follow drilling projects in the San Juan 28-7 Unit during 2026:

| Well Name | API | Section | Township | Range | Type |
|-------------------------|-----|---------|----------|-------|------------------------|
| SAN JUAN 28-7 UNIT 231P | TBD | 16 | 29N | 07W | MV DK DRILL & COMPLETE |
| SAN JUAN 28-7 UNIT 233N | TBD | 14 | 29N | 07W | MV DK DRILL & COMPLETE |

Recompletions: Hilcorp anticipates the following recompletion project in 2026:

| Well Name | API | Section | Township | Range | Type |
|-------------------------|------------|---------|----------|-------|--------------------------|
| SAN JUAN 28-7 UNIT 218E | 3003926781 | 12 | 28N | 06W | FRC PC UPHOLE RECOMPLETE |

Sidetrack/Reentry: Hilcorp does not anticipate any sidetrack/reentry projects in the San Juan 28-7 Unit during 2026.

Plug Back Program: Hilcorp does not anticipate any plug-back projects in the San Juan 28-7 Unit during 2026.

Conversion Program: Hilcorp does not anticipate any conversion projects in the San Juan 28-7 Unit during 2026.

Plugging & Abandonment Program: Hilcorp does not anticipate any P&A projects in the San Juan 28-7 Unit during 2026.

Participating Areas

Paying Well Determination Planned: Hilcorp does not anticipate submitting any paying well determinations in 2026.

PA Application Planned: Hilcorp does not anticipate submitting any PA applications in 2026.

Surface Disturbing Activities: Hilcorp does not anticipate submitting any additional surface disturbing activities in 2026.

Water Use: Hilcorp anticipates two new drills and one recompletion in 2026.

Fresh Water

Drilling: N/A

Completion: Hilcorp anticipates using approximately 18,250 barrels for the new drills and recompletion.

Fresh Water Storage

Drilling: N/A

Completion: N/A

Water Transfer

Water will be trucked to each recompletion. No water transfers, poseidon tanks, or lay flat water lines will be utilized.

Disposal:

2026 Water Disposal Estimate (based on 2025)

| Facility | Total (BBL) | Daily Avg (BPD) | Mode of Transport (Piped, Trucked, Both) |
|----------|-------------|-----------------|--|
| N/A | N/A | N/A | N/A |

**HILCORP ENERGY COMPANY - OPERATOR
EXHIBIT A
WELLS ASSOCIATED WITH THE SAN JUAN 28-7 UNIT
RIO ARRIBA COUNTY, NEW MEXICO**

| Well Name | Well No. | API | State Well Classification | Well Status | Reservoir | OCD Lease Type | Reporting Serial |
|--------------------|----------|------------|---------------------------|-------------|-----------------|----------------|-------------------------------|
| SAN JUAN 28-7 UNIT | 1 | 3003907274 | Gas | PROD | PICTURED CLIFFS | Federal | PC PA - NMNM78413B |
| SAN JUAN 28-7 UNIT | 10 | 3003907223 | Gas | PROD | PICTURED CLIFFS | Federal | PC PA - NMNM78413B |
| SAN JUAN 28-7 UNIT | 10 | 3003907223 | Gas | PROD | FRUITLAND COAL | Federal | Lease Basis - NMSF079294 |
| SAN JUAN 28-7 UNIT | 100 | 3003921664 | Gas | PROD | MESAVERDE | Federal | MV PA - NMNM78413A |
| SAN JUAN 28-7 UNIT | 100M | 3003925881 | Gas | PROD | DAKOTA | Federal | DK PA - NMNM78413C |
| SAN JUAN 28-7 UNIT | 100M | 3003925881 | Gas | PROD | MESAVERDE | Federal | MV PA - NMNM78413A |
| SAN JUAN 28-7 UNIT | 100N | 3003930880 | Gas | PROD | MESAVERDE | Federal | MV PA - NMNM78413A |
| SAN JUAN 28-7 UNIT | 100N | 3003930880 | Gas | PROD | DAKOTA | Federal | DK PA - NMNM78413C |
| SAN JUAN 28-7 UNIT | 101 | 3003921094 | Gas | PROD | MESAVERDE | Federal | MV PA - NMNM78413A |
| SAN JUAN 28-7 UNIT | 101F | 3003926896 | Gas | PROD | CHACRA | Federal | CH PA - NMNM78413D |
| SAN JUAN 28-7 UNIT | 101F | 3003926896 | Gas | PROD | DAKOTA | Federal | DK PA - NMNM78413C |
| SAN JUAN 28-7 UNIT | 101F | 3003926896 | Gas | PROD | MESAVERDE | Federal | MV PA - NMNM78413A |
| SAN JUAN 28-7 UNIT | 101M | 3003925891 | Gas | PROD | DAKOTA | Federal | DK PA - NMNM78413C |
| SAN JUAN 28-7 UNIT | 101M | 3003925891 | Gas | PROD | MESAVERDE | Federal | MV PA - NMNM78413A |
| SAN JUAN 28-7 UNIT | 102 | 3003907162 | Gas | PROD | PICTURED CLIFFS | State | PC PA - NMNM78413B |
| SAN JUAN 28-7 UNIT | 102 | 3003907162 | Gas | PROD | MESAVERDE | State | MV PA - NMNM78413A |
| SAN JUAN 28-7 UNIT | 103 | 3003907209 | Gas | PROD | PICTURED CLIFFS | Federal | PC PA - NMNM78413B |
| SAN JUAN 28-7 UNIT | 103 | 3003907209 | Gas | PROD | MESAVERDE | Federal | MV PA - NMNM78413A |
| SAN JUAN 28-7 UNIT | 104 | 3003907160 | Gas | PROD | PICTURED CLIFFS | Federal | PC PA - NMNM78413B |
| SAN JUAN 28-7 UNIT | 105 | 3003907242 | Gas | PROD | FRUITLAND COAL | Federal | FC PA - FC PA - NMNM78413E |
| SAN JUAN 28-7 UNIT | 106X | 3003907103 | Gas | PROD | MESAVERDE | Federal | MV PA - NMNM78413A |
| SAN JUAN 28-7 UNIT | 106X | 3003907103 | Gas | PROD | PICTURED CLIFFS | Federal | PC PA - NMNM78413B |
| SAN JUAN 28-7 UNIT | 107 | 3003907122 | Gas | PROD | PICTURED CLIFFS | Federal | PC PA - NMNM78413B |

| Well Name | Well No. | API | State Well Classification | Well Status | Reservoir | OCD Lease Type | Reporting Serial |
|-----------------------|----------|------------|---------------------------|-------------|-----------------|----------------|--------------------------|
| SAN JUAN 28-7 UNIT | 108 | 3003907077 | Gas | PROD | PICTURED CLIFFS | State | PC PA - NMNM78413B |
| SAN JUAN 28-7 UNIT NP | 109 | 3003907036 | Gas | PROD | DAKOTA | Federal | Lease Basis - NMSF078840 |
| SAN JUAN 28-7 UNIT NP | 109 | 3003907036 | Gas | PROD | MESAVERDE | Federal | MV PA - NMNM78413A |
| SAN JUAN 28-7 UNIT | 109M | 3003925794 | Gas | PROD | DAKOTA | Federal | DK PA - NMNM78413C |
| SAN JUAN 28-7 UNIT | 109M | 3003925794 | Gas | PROD | MESAVERDE | Federal | MV PA - NMNM78413A |
| SAN JUAN 28-7 UNIT | 110 | 3003921732 | Gas | PROD | DAKOTA | Federal | DK PA - NMNM78413C |
| SAN JUAN 28-7 UNIT | 110 | 3003921732 | Gas | PROD | MESAVERDE | Federal | MV PA - NMNM78413A |
| SAN JUAN 28-7 UNIT | 110M | 3003925884 | Gas | PROD | DAKOTA | Federal | DK PA - NMNM78413C |
| SAN JUAN 28-7 UNIT | 110M | 3003925884 | Gas | PROD | MESAVERDE | Federal | MV PA - NMNM78413A |
| SAN JUAN 28-7 UNIT | 110P | 3003930972 | Gas | PROD | DAKOTA | Federal | DK PA - NMNM78413C |
| SAN JUAN 28-7 UNIT | 110P | 3003930972 | Gas | PROD | MESAVERDE | Federal | MV PA - NMNM78413A |
| SAN JUAN 28-7 UNIT | 111 | 3003920991 | Gas | PROD | DAKOTA | Federal | DK PA - NMNM78413C |
| SAN JUAN 28-7 UNIT | 111 | 3003920991 | Gas | PROD | MESAVERDE | Federal | MV PA - NMNM78413A |
| SAN JUAN 28-7 UNIT | 111M | 3003925885 | Gas | PROD | MESAVERDE | Federal | MV PA - NMNM78413A |
| SAN JUAN 28-7 UNIT | 111M | 3003925885 | Gas | PROD | DAKOTA | Federal | DK PA - NMNM78413C |
| SAN JUAN 28-7 UNIT | 111N | 3003930808 | Gas | PROD | DAKOTA | Federal | DK PA - NMNM78413C |
| SAN JUAN 28-7 UNIT | 111N | 3003930808 | Gas | PROD | MESAVERDE | Federal | MV PA - NMNM78413A |
| SAN JUAN 28-7 UNIT | 111N | 3003930808 | Gas | PROD | CHACRA | Federal | CH PA - NMNM78413D |
| SAN JUAN 28-7 UNIT | 113 | 3003921662 | Gas | PROD | MESAVERDE | Federal | MV PA - NMNM78413A |
| SAN JUAN 28-7 UNIT | 113 | 3003921662 | Gas | PROD | DAKOTA | Federal | DK PA - NMNM78413C |
| SAN JUAN 28-7 UNIT | 113M | 3003925886 | Gas | PROD | MESAVERDE | Federal | MV PA - NMNM78413A |
| SAN JUAN 28-7 UNIT | 113M | 3003925886 | Gas | PROD | DAKOTA | Federal | DK PA - NMNM78413C |
| SAN JUAN 28-7 UNIT | 113N | 3003931146 | Gas | PROD | DAKOTA | Federal | DK PA - NMNM78413C |
| SAN JUAN 28-7 UNIT | 113N | 3003931146 | Gas | PROD | MESAVERDE | Federal | MV PA - NMNM78413A |
| SAN JUAN 28-7 UNIT | 114 | 3003907350 | Gas | PROD | PICTURED CLIFFS | Federal | PC PA - NMNM78413B |
| SAN JUAN 28-7 UNIT | 115 | 3003906932 | Gas | PROD | PICTURED CLIFFS | Federal | PC PA - NMNM78413B |
| SAN JUAN 28-7 UNIT | 119 | 3003906999 | Gas | PROD | PICTURED CLIFFS | Federal | PC PA - NMNM78413B |

| Well Name | Well No. | API | State Well Classification | Well Status | Reservoir | OCD Lease Type | Reporting Serial |
|--------------------|----------|------------|---------------------------|-------------|----------------|----------------|----------------------------|
| SAN JUAN 28-7 UNIT | 12 | 3003907407 | Gas | PROD | FRUITLAND COAL | Federal | FC PA - FC PA - NMNM78413E |
| SAN JUAN 28-7 UNIT | 124 | 3003907116 | Gas | PROD | DAKOTA | Federal | DK PA - NMNM78413C |
| SAN JUAN 28-7 UNIT | 124 | 3003907116 | Gas | PROD | MESAVERDE | Federal | MV PA - NMNM78413A |
| SAN JUAN 28-7 UNIT | 124F | 3003927068 | Gas | PROD | DAKOTA | Federal | DK PA - NMNM78413C |
| SAN JUAN 28-7 UNIT | 124F | 3003927068 | Gas | PROD | MESAVERDE | Federal | MV PA - NMNM78413A |
| SAN JUAN 28-7 UNIT | 124G | 3003926952 | Gas | PROD | MESAVERDE | Federal | MV PA - NMNM78413A |
| SAN JUAN 28-7 UNIT | 124G | 3003926952 | Gas | PROD | DAKOTA | Federal | DK PA - NMNM78413C |
| SAN JUAN 28-7 UNIT | 124M | 3003925692 | Gas | PROD | MESAVERDE | Federal | MV PA - NMNM78413A |
| SAN JUAN 28-7 UNIT | 124M | 3003925692 | Gas | PROD | DAKOTA | Federal | DK PA - NMNM78413C |
| SAN JUAN 28-7 UNIT | 125 | 3003907102 | Gas | PROD | DAKOTA | Federal | DK PA - NMNM78413C |
| SAN JUAN 28-7 UNIT | 125 | 3003907102 | Gas | PROD | MESAVERDE | Federal | MV PA - NMNM78413A |
| SAN JUAN 28-7 UNIT | 125F | 3003927062 | Gas | PROD | MESAVERDE | Federal | MV PA - NMNM78413A |
| SAN JUAN 28-7 UNIT | 125F | 3003927062 | Gas | PROD | DAKOTA | Federal | DK PA - NMNM78413C |
| SAN JUAN 28-7 UNIT | 125G | 3003926928 | Gas | PROD | MESAVERDE | Federal | MV PA - NMNM78413A |
| SAN JUAN 28-7 UNIT | 125G | 3003926928 | Gas | PROD | DAKOTA | Federal | DK PA - NMNM78413C |
| SAN JUAN 28-7 UNIT | 125M | 3003925546 | Gas | PROD | MESAVERDE | Federal | MV PA - NMNM78413A |
| SAN JUAN 28-7 UNIT | 125M | 3003925546 | Gas | PROD | DAKOTA | Federal | DK PA - NMNM78413C |
| SAN JUAN 28-7 UNIT | 126 | 3003907161 | Gas | PROD | MESAVERDE | Federal | MV PA - NMNM78413A |
| SAN JUAN 28-7 UNIT | 126 | 3003907161 | Gas | PROD | DAKOTA | Federal | DK PA - NMNM78413C |
| SAN JUAN 28-7 UNIT | 126F | 3003926942 | Gas | PROD | MESAVERDE | Federal | MV PA - NMNM78413A |
| SAN JUAN 28-7 UNIT | 126F | 3003926942 | Gas | PROD | DAKOTA | Federal | DK PA - NMNM78413C |
| SAN JUAN 28-7 UNIT | 126M | 3003926170 | Gas | PROD | MESAVERDE | Federal | MV PA - NMNM78413A |
| SAN JUAN 28-7 UNIT | 126M | 3003926170 | Gas | PROD | DAKOTA | Federal | DK PA - NMNM78413C |
| SAN JUAN 28-7 UNIT | 128 | 3003982375 | Gas | PROD | MESAVERDE | Federal | DK PA - NMNM78413C |
| SAN JUAN 28-7 UNIT | 128 | 3003982375 | Gas | PROD | DAKOTA | Federal | DK PA - NMNM78413C |
| SAN JUAN 28-7 UNIT | 128F | 3003926954 | Gas | PROD | DAKOTA | Federal | DK PA - NMNM78413C |
| SAN JUAN 28-7 UNIT | 128F | 3003926954 | Gas | PROD | MESAVERDE | Federal | MV PA - NMNM78413A |

| Well Name | Well No. | API | State Well Classification | Well Status | Reservoir | OCD Lease Type | Reporting Serial |
|--------------------|----------|------------|---------------------------|-------------|-----------------|----------------|--------------------|
| SAN JUAN 28-7 UNIT | 128G | 3003927001 | Gas | PROD | DAKOTA | Federal | DK PA - NMNM78413C |
| SAN JUAN 28-7 UNIT | 128G | 3003927001 | Gas | PROD | MESAVERDE | Federal | MV PA - NMNM78413A |
| SAN JUAN 28-7 UNIT | 128M | 3003925419 | Gas | PROD | DAKOTA | Federal | DK PA - NMNM78413C |
| SAN JUAN 28-7 UNIT | 128M | 3003925419 | Gas | PROD | MESAVERDE | Federal | MV PA - NMNM78413A |
| SAN JUAN 28-7 UNIT | 129E | 3003923336 | Gas | PROD | DAKOTA | State | DK PA - NMNM78413C |
| SAN JUAN 28-7 UNIT | 129E | 3003923336 | Gas | PROD | MESAVERDE | State | DK PA - NMNM78413C |
| SAN JUAN 28-7 UNIT | 129F | 3003926966 | Gas | PROD | DAKOTA | STATE | DK PA - NMNM78413C |
| SAN JUAN 28-7 UNIT | 129F | 3003926966 | Gas | PROD | MESAVERDE | STATE | DK PA - NMNM78413C |
| SAN JUAN 28-7 UNIT | 129M | 3003926955 | Gas | PROD | MESAVERDE | State | MV PA - NMNM78413A |
| SAN JUAN 28-7 UNIT | 129M | 3003926955 | Gas | PROD | DAKOTA | State | DK PA - NMNM78413C |
| SAN JUAN 28-7 UNIT | 129R | 3003926559 | Gas | PROD | MESAVERDE | State | MV PA - NMNM78413A |
| SAN JUAN 28-7 UNIT | 129R | 3003926559 | Gas | PROD | DAKOTA | State | DK PA - NMNM78413C |
| SAN JUAN 28-7 UNIT | 12A | 3003922239 | Gas | PROD | MESAVERDE | Federal | MV PA - NMNM78413A |
| SAN JUAN 28-7 UNIT | 12A | 3003922239 | Gas | PROD | PICTURED CLIFFS | Federal | PC PA - NMNM78413B |
| SAN JUAN 28-7 UNIT | 13 | 3003906980 | Gas | PROD | PICTURED CLIFFS | Federal | PC PA - NMNM78413B |
| SAN JUAN 28-7 UNIT | 130 | 3003907180 | Gas | PROD | DAKOTA | State | DK PA - NMNM78413C |
| SAN JUAN 28-7 UNIT | 130 | 3003907180 | Gas | PROD | MESAVERDE | State | MV PA - NMNM78413A |
| SAN JUAN 28-7 UNIT | 130E | 3003926688 | Gas | PROD | DAKOTA | State | DK PA - NMNM78413C |
| SAN JUAN 28-7 UNIT | 130E | 3003926688 | Gas | PROD | MESAVERDE | State | MV PA - NMNM78413A |
| SAN JUAN 28-7 UNIT | 130F | 3003926930 | Gas | PROD | MESAVERDE | State | DK PA - NMNM78413C |
| SAN JUAN 28-7 UNIT | 130F | 3003926930 | Gas | PROD | DAKOTA | State | DK PA - NMNM78413C |
| SAN JUAN 28-7 UNIT | 130M | 3003925544 | Gas | PROD | DAKOTA | State | DK PA - NMNM78413C |
| SAN JUAN 28-7 UNIT | 130M | 3003925544 | Gas | PROD | MESAVERDE | State | MV PA - NMNM78413A |
| SAN JUAN 28-7 UNIT | 131 | 3003920587 | Gas | PROD | DAKOTA | Federal | DK PA - NMNM78413C |
| SAN JUAN 28-7 UNIT | 131 | 3003920587 | Gas | PROD | MESAVERDE | Federal | DK PA - NMNM78413C |
| SAN JUAN 28-7 UNIT | 131 | 3003920587 | Gas | PROD | MANCOS | Federal | DK PA - NMNM78413C |
| SAN JUAN 28-7 UNIT | 131E | 3003926696 | Gas | PROD | DAKOTA | Federal | DK PA - NMNM78413C |
| SAN JUAN 28-7 UNIT | 131E | 3003926696 | Gas | PROD | MESAVERDE | Federal | MV PA - NMNM78413A |

| Well Name | Well No. | API | State Well Classification | Well Status | Reservoir | OCD Lease Type | Reporting Serial |
|--------------------|----------|------------|---------------------------|-------------|-----------|----------------|--------------------------|
| SAN JUAN 28-7 UNIT | 131M | 3003925547 | Gas | PROD | MESAVERDE | Federal | MV PA - NMNM78413A |
| SAN JUAN 28-7 UNIT | 131M | 3003925547 | Gas | PROD | DAKOTA | Federal | DK PA - NMNM78413C |
| SAN JUAN 28-7 UNIT | 131N | 3003930663 | Gas | PROD | MESAVERDE | Federal | MV PA - NMNM78413A |
| SAN JUAN 28-7 UNIT | 131N | 3003930663 | Gas | PROD | MANCOS | Federal | Lease Basis - NMSF078496 |
| SAN JUAN 28-7 UNIT | 131N | 3003930663 | Gas | PROD | DAKOTA | Federal | DK PA - NMNM78413C |
| SAN JUAN 28-7 UNIT | 132 | 3003907051 | Gas | PROD | DAKOTA | Federal | DK PA - NMNM78413C |
| SAN JUAN 28-7 UNIT | 132 | 3003907051 | Gas | PROD | MANCOS | Federal | DK PA - NMNM78413C |
| SAN JUAN 28-7 UNIT | 132 | 3003907051 | Gas | PROD | MESAVERDE | Federal | DK PA - NMNM78413C |
| SAN JUAN 28-7 UNIT | 132F | 3003926940 | Gas | PROD | MESAVERDE | Federal | MV PA - NMNM78413A |
| SAN JUAN 28-7 UNIT | 132F | 3003926940 | Gas | PROD | DAKOTA | Federal | DK PA - NMNM78413C |
| SAN JUAN 28-7 UNIT | 132G | 3003926941 | Gas | PROD | MESAVERDE | Federal | MV PA - NMNM78413A |
| SAN JUAN 28-7 UNIT | 132G | 3003926941 | Gas | PROD | DAKOTA | Federal | DK PA - NMNM78413C |
| SAN JUAN 28-7 UNIT | 132M | 3003926459 | Gas | PROD | MESAVERDE | Federal | MV PA - NMNM78413A |
| SAN JUAN 28-7 UNIT | 132M | 3003926459 | Gas | PROD | DAKOTA | Federal | DK PA - NMNM78413C |
| SAN JUAN 28-7 UNIT | 133 | 3003907224 | Gas | PROD | DAKOTA | Federal | DK PA - NMNM78413C |
| SAN JUAN 28-7 UNIT | 133 | 3003907224 | Gas | PROD | MESAVERDE | Federal | MV PA - NMNM78413A |
| SAN JUAN 28-7 UNIT | 133F | 3003926697 | Gas | PROD | MESAVERDE | Federal | MV PA - NMNM78413A |
| SAN JUAN 28-7 UNIT | 133F | 3003926697 | Gas | PROD | DAKOTA | Federal | DK PA - NMNM78413C |
| SAN JUAN 28-7 UNIT | 133G | 3003926699 | Gas | PROD | DAKOTA | Federal | DK PA - NMNM78413C |
| SAN JUAN 28-7 UNIT | 133G | 3003926699 | Gas | PROD | MESAVERDE | Federal | MV PA - NMNM78413A |
| SAN JUAN 28-7 UNIT | 133M | 3003925388 | Gas | PROD | DAKOTA | Federal | DK PA - NMNM78413C |
| SAN JUAN 28-7 UNIT | 133M | 3003925388 | Gas | PROD | MESAVERDE | Federal | MV PA - NMNM78413A |
| SAN JUAN 28-7 UNIT | 134 | 3003921329 | Gas | PROD | DAKOTA | Federal | DK PA - NMNM78413C |
| SAN JUAN 28-7 UNIT | 134 | 3003921329 | Gas | PROD | MESAVERDE | Federal | MV PA - NMNM78413A |
| SAN JUAN 28-7 UNIT | 134E | 3003922625 | Gas | PROD | DAKOTA | Federal | DK PA - NMNM78413C |
| SAN JUAN 28-7 UNIT | 134E | 3003922625 | Gas | PROD | MESAVERDE | Federal | MV PA - NMNM78413A |
| SAN JUAN 28-7 UNIT | 134G | 3003930408 | Gas | PROD | MESAVERDE | Federal | MV PA - NMNM78413A |
| SAN JUAN 28-7 UNIT | 134G | 3003930408 | Gas | PROD | DAKOTA | Federal | DK PA - NMNM78413C |

| Well Name | Well No. | API | State Well Classification | Well Status | Reservoir | OCD Lease Type | Reporting Serial |
|--------------------|----------|------------|---------------------------|-------------|-----------------|----------------|--------------------------|
| SAN JUAN 28-7 UNIT | 135 | 3003920588 | Gas | PROD | DAKOTA | Federal | DK PA - NMNM78413C |
| SAN JUAN 28-7 UNIT | 135 | 3003920588 | Gas | PROD | MESAVERDE | Federal | MV PA - NMNM78413A |
| SAN JUAN 28-7 UNIT | 135E | 3003926171 | Gas | PROD | MESAVERDE | Federal | MV PA - NMNM78413A |
| SAN JUAN 28-7 UNIT | 135E | 3003926171 | Gas | PROD | DAKOTA | Federal | DK PA - NMNM78413C |
| SAN JUAN 28-7 UNIT | 135M | 3003925408 | Gas | PROD | MESAVERDE | Federal | MV PA - NMNM78413A |
| SAN JUAN 28-7 UNIT | 135M | 3003925408 | Gas | PROD | DAKOTA | Federal | DK PA - NMNM78413C |
| SAN JUAN 28-7 UNIT | 136 | 3003907408 | Gas | PROD | DAKOTA | Federal | DK PA - NMNM78413C |
| SAN JUAN 28-7 UNIT | 136E | 3003923752 | Gas | PROD | MESAVERDE | Federal | DK PA - NMNM78413C |
| SAN JUAN 28-7 UNIT | 136E | 3003923752 | Gas | PROD | DAKOTA | Federal | DK PA - NMNM78413C |
| SAN JUAN 28-7 UNIT | 136F | 3003927045 | Gas | PROD | MESAVERDE | Federal | MV PA - NMNM78413A |
| SAN JUAN 28-7 UNIT | 136F | 3003927045 | Gas | PROD | DAKOTA | Federal | DK PA - NMNM78413C |
| SAN JUAN 28-7 UNIT | 136M | 3003926981 | Gas | PROD | DAKOTA | Federal | DK PA - NMNM78413C |
| SAN JUAN 28-7 UNIT | 136M | 3003926981 | Gas | PROD | MESAVERDE | Federal | MV PA - NMNM78413A |
| SAN JUAN 28-7 UNIT | 145 | 3003920071 | Gas | PROD | DAKOTA | Federal | DK PA - NMNM78413C |
| SAN JUAN 28-7 UNIT | 145F | 3003927078 | Gas | PROD | MESAVERDE | Federal | MV PA - NMNM78413A |
| SAN JUAN 28-7 UNIT | 145F | 3003927078 | Gas | PROD | DAKOTA | Federal | DK PA - NMNM78413C |
| SAN JUAN 28-7 UNIT | 145G | 3003926989 | Gas | PROD | MESAVERDE | Federal | MV PA - NMNM78413A |
| SAN JUAN 28-7 UNIT | 145G | 3003926989 | Gas | PROD | DAKOTA | Federal | DK PA - NMNM78413C |
| SAN JUAN 28-7 UNIT | 145M | 3003925823 | Gas | PROD | MESAVERDE | Federal | MV PA - NMNM78413A |
| SAN JUAN 28-7 UNIT | 145M | 3003925823 | Gas | PROD | DAKOTA | Federal | DK PA - NMNM78413C |
| SAN JUAN 28-7 UNIT | 146 | 3003920097 | Gas | PROD | FRUITLAND COAL | Federal | Lease Basis - NMSF078497 |
| SAN JUAN 28-7 UNIT | 146 | 3003920097 | Gas | PROD | PICTURED CLIFFS | Federal | PC PA - NMNM78413B |
| SAN JUAN 28-7 UNIT | 147 | 3003920264 | Gas | PROD | DAKOTA | Federal | DK PA - NMNM78413C |
| SAN JUAN 28-7 UNIT | 147 | 3003920264 | Gas | PROD | MESAVERDE | Federal | MV PA - NMNM78413A |
| SAN JUAN 28-7 UNIT | 147F | 3003927034 | Gas | PROD | MESAVERDE | Federal | MV PA - NMNM78413A |
| SAN JUAN 28-7 UNIT | 147F | 3003927034 | Gas | PROD | DAKOTA | Federal | DK PA - NMNM78413C |
| SAN JUAN 28-7 UNIT | 147G | 3003927016 | Gas | PROD | DAKOTA | Federal | DK PA - NMNM78413C |
| SAN JUAN 28-7 UNIT | 147G | 3003927016 | Gas | PROD | MESAVERDE | Federal | MV PA - NMNM78413A |

| Well Name | Well No. | API | State Well Classification | Well Status | Reservoir | OCD Lease Type | Reporting Serial |
|--------------------|----------|------------|---------------------------|-------------|-----------------|----------------|--------------------|
| SAN JUAN 28-7 UNIT | 147M | 3003926667 | Gas | PROD | MESAVERDE | Federal | MV PA - NMNM78413A |
| SAN JUAN 28-7 UNIT | 147M | 3003926667 | Gas | PROD | DAKOTA | Federal | DK PA - NMNM78413C |
| SAN JUAN 28-7 UNIT | 15 | 3003906879 | Gas | PROD | PICTURED CLIFFS | Federal | PC PA - NMNM78413B |
| SAN JUAN 28-7 UNIT | 150 | 3003920327 | Gas | PROD | PICTURED CLIFFS | Federal | PC PA - NMNM78413B |
| SAN JUAN 28-7 UNIT | 151E | 3003930415 | Gas | PROD | DAKOTA | Federal | DK PA - NMNM78413C |
| SAN JUAN 28-7 UNIT | 151E | 3003930415 | Gas | PROD | MESAVERDE | Federal | MV PA - NMNM78413A |
| SAN JUAN 28-7 UNIT | 152 | 3003920434 | Gas | PROD | DAKOTA | Federal | DK PA - NMNM78413C |
| SAN JUAN 28-7 UNIT | 152 | 3003920434 | Gas | PROD | MESAVERDE | Federal | DK PA - NMNM78413C |
| SAN JUAN 28-7 UNIT | 152E | 3003926784 | Gas | PROD | DAKOTA | Federal | DK PA - NMNM78413C |
| SAN JUAN 28-7 UNIT | 152E | 3003926784 | Gas | PROD | MESAVERDE | Federal | MV PA - NMNM78413A |
| SAN JUAN 28-7 UNIT | 153 | 3003920405 | Gas | PROD | DAKOTA | Federal | DK PA - NMNM78413C |
| SAN JUAN 28-7 UNIT | 153 | 3003920405 | Gas | PROD | MESAVERDE | Federal | MV PA - NMNM78413A |
| SAN JUAN 28-7 UNIT | 153E | 3003925883 | Gas | PROD | MESAVERDE | Federal | MV PA - NMNM78413A |
| SAN JUAN 28-7 UNIT | 153E | 3003925883 | Gas | PROD | DAKOTA | Federal | DK PA - NMNM78413C |
| SAN JUAN 28-7 UNIT | 153M | 3003930631 | Gas | PROD | DAKOTA | Federal | DK PA - NMNM78413C |
| SAN JUAN 28-7 UNIT | 153M | 3003930631 | Gas | PROD | MESAVERDE | Federal | MV PA - NMNM78413A |
| SAN JUAN 28-7 UNIT | 153N | 3003930340 | Gas | PROD | DAKOTA | Federal | DK PA - NMNM78413C |
| SAN JUAN 28-7 UNIT | 153N | 3003930340 | Gas | PROD | MESAVERDE | Federal | MV PA - NMNM78413A |
| SAN JUAN 28-7 UNIT | 154E | 3003926700 | Gas | PROD | DAKOTA | Federal | DK PA - NMNM78413C |
| SAN JUAN 28-7 UNIT | 154E | 3003926700 | Gas | PROD | MESAVERDE | Federal | DK PA - NMNM78413C |
| SAN JUAN 28-7 UNIT | 154F | 3003931145 | Gas | PROD | MESAVERDE | Federal | DK PA - NMNM78413C |
| SAN JUAN 28-7 UNIT | 154F | 3003931145 | Gas | PROD | DAKOTA | Federal | DK PA - NMNM78413C |
| SAN JUAN 28-7 UNIT | 154F | 3003931145 | Gas | PROD | MANCOS | Federal | DK PA - NMNM78413C |
| SAN JUAN 28-7 UNIT | 155 | 3003920430 | Gas | PROD | MESAVERDE | Federal | MV PA - NMNM78413A |
| SAN JUAN 28-7 UNIT | 155 | 3003920430 | Gas | PROD | PICTURED CLIFFS | Federal | PC PA - NMNM78413B |
| SAN JUAN 28-7 UNIT | 155 | 3003920430 | Gas | PROD | DAKOTA | Federal | DK PA - NMNM78413C |
| SAN JUAN 28-7 UNIT | 155E | 3003926460 | Gas | PROD | DAKOTA | Federal | DK PA - NMNM78413C |
| SAN JUAN 28-7 UNIT | 155E | 3003926460 | Gas | PROD | MESAVERDE | Federal | MV PA - NMNM78413A |

| Well Name | Well No. | API | State Well Classification | Well Status | Reservoir | OCD Lease Type | Reporting Serial |
|--------------------|----------|------------|---------------------------|-------------|-----------|----------------|--------------------|
| SAN JUAN 28-7 UNIT | 155F | 3003927037 | Gas | PROD | DAKOTA | Federal | DK PA - NMNM78413C |
| SAN JUAN 28-7 UNIT | 155F | 3003927037 | Gas | PROD | MESAVERDE | Federal | DK PA - NMNM78413C |
| SAN JUAN 28-7 UNIT | 155G | 3003926929 | Gas | PROD | MESAVERDE | Federal | MV PA - NMNM78413A |
| SAN JUAN 28-7 UNIT | 155G | 3003926929 | Gas | PROD | DAKOTA | Federal | DK PA - NMNM78413C |
| SAN JUAN 28-7 UNIT | 156F | 3003926953 | Gas | PROD | DAKOTA | Federal | DK PA - NMNM78413C |
| SAN JUAN 28-7 UNIT | 156F | 3003926953 | Gas | PROD | MESAVERDE | Federal | MV PA - NMNM78413A |
| SAN JUAN 28-7 UNIT | 156G | 3003930092 | Gas | PROD | MESAVERDE | Federal | MV PA - NMNM78413A |
| SAN JUAN 28-7 UNIT | 156G | 3003930092 | Gas | PROD | DAKOTA | Federal | DK PA - NMNM78413C |
| SAN JUAN 28-7 UNIT | 156M | 3003925820 | Gas | PROD | MESAVERDE | Federal | MV PA - NMNM78413A |
| SAN JUAN 28-7 UNIT | 156M | 3003925820 | Gas | PROD | DAKOTA | Federal | DK PA - NMNM78413C |
| SAN JUAN 28-7 UNIT | 157 | 3003920429 | Gas | PROD | MESAVERDE | Federal | MV PA - NMNM78413A |
| SAN JUAN 28-7 UNIT | 157 | 3003920429 | Gas | PROD | DAKOTA | Federal | DK PA - NMNM78413C |
| SAN JUAN 28-7 UNIT | 157G | 3003930134 | Gas | PROD | DAKOTA | Federal | DK PA - NMNM78413C |
| SAN JUAN 28-7 UNIT | 157G | 3003930134 | Gas | PROD | MESAVERDE | Federal | MV PA - NMNM78413A |
| SAN JUAN 28-7 UNIT | 157M | 3003925662 | Gas | PROD | MESAVERDE | Federal | MV PA - NMNM78413A |
| SAN JUAN 28-7 UNIT | 157M | 3003925662 | Gas | PROD | DAKOTA | Federal | DK PA - NMNM78413C |
| SAN JUAN 28-7 UNIT | 158 | 3003920381 | Gas | PROD | MANCOS | Federal | DK PA - NMNM78413C |
| SAN JUAN 28-7 UNIT | 158 | 3003920381 | Gas | PROD | DAKOTA | Federal | DK PA - NMNM78413C |
| SAN JUAN 28-7 UNIT | 158 | 3003920381 | Gas | PROD | MESAVERDE | Federal | DK PA - NMNM78413C |
| SAN JUAN 28-7 UNIT | 158E | 3003923746 | Gas | PROD | DAKOTA | Federal | DK PA - NMNM78413C |
| SAN JUAN 28-7 UNIT | 158E | 3003923746 | Gas | PROD | MESAVERDE | Federal | MV PA - NMNM78413A |
| SAN JUAN 28-7 UNIT | 158M | 3003930238 | Gas | PROD | MESAVERDE | Federal | MV PA - NMNM78413A |
| SAN JUAN 28-7 UNIT | 158M | 3003930238 | Gas | PROD | DAKOTA | Federal | DK PA - NMNM78413C |
| SAN JUAN 28-7 UNIT | 159 | 3003920384 | Gas | PROD | DAKOTA | Federal | DK PA - NMNM78413C |
| SAN JUAN 28-7 UNIT | 159 | 3003920384 | Gas | PROD | MESAVERDE | Federal | DK PA - NMNM78413C |
| SAN JUAN 28-7 UNIT | 159E | 3003926633 | Gas | PROD | MESAVERDE | Federal | MV PA - NMNM78413A |
| SAN JUAN 28-7 UNIT | 159E | 3003926633 | Gas | PROD | DAKOTA | Federal | DK PA - NMNM78413C |
| SAN JUAN 28-7 UNIT | 159G | 3003930262 | Gas | PROD | DAKOTA | Federal | DK PA - NMNM78413C |

| Well Name | Well No. | API | State Well Classification | Well Status | Reservoir | OCD Lease Type | Reporting Serial |
|--------------------|----------|------------|---------------------------|-------------|-----------------|----------------|--|
| SAN JUAN 28-7 UNIT | 159G | 3003930262 | Gas | PROD | MESAVERDE | Federal | MV PA - NMNM78413A |
| SAN JUAN 28-7 UNIT | 159M | 3003925572 | Gas | PROD | DAKOTA | Federal | DK PA - NMNM78413C |
| SAN JUAN 28-7 UNIT | 159M | 3003925572 | Gas | PROD | FRUITLAND COAL | Federal | FC PA - NMNM78413E |
| SAN JUAN 28-7 UNIT | 159M | 3003925572 | Gas | PROD | MESAVERDE | Federal | MV PA - NMNM78413A |
| SAN JUAN 28-7 UNIT | 159M | 3003925572 | Gas | PROD | PICTURED CLIFFS | Federal | PC PA - NMNM78413B |
| SAN JUAN 28-7 UNIT | 16 | 3003906935 | Gas | PROD | PICTURED CLIFFS | Federal | PC PA - NMNM78413B |
| SAN JUAN 28-7 UNIT | 161 | 3003920502 | Gas | PROD | PICTURED CLIFFS | Federal | Lease Basis - NMNM108242, Lease Basis - NMNM94049 |
| SAN JUAN 28-7 UNIT | 161 | 3003920502 | Gas | PROD | FRUITLAND COAL | Federal | Lease Basis - NMNM108242, Lease Basis - NMNM94049 |
| SAN JUAN 28-7 UNIT | 164 | 3003920517 | Gas | PROD | MESAVERDE | Federal | DK PA - NMNM78413C |
| SAN JUAN 28-7 UNIT | 164 | 3003920517 | Gas | PROD | DAKOTA | Federal | DK PA - NMNM78413C |
| SAN JUAN 28-7 UNIT | 164E | 3003923350 | Gas | PROD | DAKOTA | Federal | DK PA - NMNM78413C |
| SAN JUAN 28-7 UNIT | 164F | 3003927031 | Gas | PROD | MESAVERDE | Federal | MV PA - NMNM78413A |
| SAN JUAN 28-7 UNIT | 164F | 3003927031 | Gas | PROD | DAKOTA | Federal | DK PA - NMNM78413C |
| SAN JUAN 28-7 UNIT | 164M | 3003927026 | Gas | PROD | DAKOTA | Federal | DK PA - NMNM78413C |
| SAN JUAN 28-7 UNIT | 164M | 3003927026 | Gas | PROD | MESAVERDE | Federal | MV PA - NMNM78413A |
| SAN JUAN 28-7 UNIT | 165 | 3003920518 | Gas | PROD | DAKOTA | State | DK PA - NMNM78413C |
| SAN JUAN 28-7 UNIT | 165 | 3003920518 | Gas | PROD | MESAVERDE | State | MV PA - NMNM78413A |
| SAN JUAN 28-7 UNIT | 165M | 3003923337 | Gas | PROD | MESAVERDE | State | MV PA - NMNM78413A |
| SAN JUAN 28-7 UNIT | 165M | 3003923337 | Gas | PROD | DAKOTA | State | DK PA - NMNM78413C |
| SAN JUAN 28-7 UNIT | 166 | 3003920523 | Gas | PROD | MESAVERDE | State | DK PA - NMNM78413C |
| SAN JUAN 28-7 UNIT | 166 | 3003920523 | Gas | PROD | DAKOTA | State | DK PA - NMNM78413C |
| SAN JUAN 28-7 UNIT | 166M | 3003926736 | Gas | PROD | MESAVERDE | State | DK PA - NMNM78413C |
| SAN JUAN 28-7 UNIT | 166M | 3003926736 | Gas | PROD | DAKOTA | State | DK PA - NMNM78413C |
| SAN JUAN 28-7 UNIT | 168 | 3003920695 | Gas | PROD | PICTURED CLIFFS | Federal | PC PA - NMNM78413B |
| SAN JUAN 28-7 UNIT | 168 | 3003920695 | Gas | PROD | FRUITLAND COAL | Federal | Lease Basis - NMSF078835A |
| SAN JUAN 28-7 UNIT | 17 | 3003906898 | Gas | PROD | PICTURED CLIFFS | Federal | PC PA - NMNM78413B |

| Well Name | Well No. | API | State Well Classification | Well Status | Reservoir | OCD Lease Type | Reporting Serial |
|--------------------|----------|------------|---------------------------|-------------|-----------------|----------------|--------------------------|
| SAN JUAN 28-7 UNIT | 175 | 3003920734 | Gas | PROD | PICTURED CLIFFS | Federal | PC PA - NMNM78413B |
| SAN JUAN 28-7 UNIT | 175 | 3003920734 | Gas | PROD | CHACRA | Federal | CH PA - NMNM78413D |
| SAN JUAN 28-7 UNIT | 177 | 3003920762 | Gas | PROD | CHACRA | Federal | CH PA - NMNM78413D |
| SAN JUAN 28-7 UNIT | 177 | 3003920762 | Gas | PROD | PICTURED CLIFFS | Federal | PC PA - NMNM78413B |
| SAN JUAN 28-7 UNIT | 178 | 3003920795 | Gas | PROD | CHACRA | Federal | CH PA - NMNM78413D |
| SAN JUAN 28-7 UNIT | 178 | 3003920795 | Gas | PROD | PICTURED CLIFFS | Federal | PC PA - NMNM78413B |
| SAN JUAN 28-7 UNIT | 179 | 3003920797 | Gas | PROD | PICTURED CLIFFS | Federal | PC PA - NMNM78413B |
| SAN JUAN 28-7 UNIT | 18 | 3003907289 | Gas | PROD | FRUITLAND COAL | Federal | Lease Basis - NMNM108251 |
| SAN JUAN 28-7 UNIT | 18 | 3003907289 | Gas | PROD | PICTURED CLIFFS | Federal | PC PA - NMNM78413B |
| SAN JUAN 28-7 UNIT | 18 | 3003907289 | Gas | PROD | MESAVERDE | Federal | MV PA - NMNM78413A |
| SAN JUAN 28-7 UNIT | 180 | 3003920763 | Gas | PROD | PICTURED CLIFFS | Federal | PC PA - NMNM78413B |
| SAN JUAN 28-7 UNIT | 181 | 3003920775 | Gas | PROD | DAKOTA | Federal | DK PA - NMNM78413C |
| SAN JUAN 28-7 UNIT | 181 | 3003920775 | Gas | PROD | MESAVERDE | Federal | MV PA - NMNM78413A |
| SAN JUAN 28-7 UNIT | 181F | 3003926698 | Gas | PROD | MESAVERDE | Federal | MV PA - NMNM78413A |
| SAN JUAN 28-7 UNIT | 181F | 3003926698 | Gas | PROD | DAKOTA | Federal | DK PA - NMNM78413C |
| SAN JUAN 28-7 UNIT | 181G | 3003926880 | Gas | PROD | MESAVERDE | Federal | MV PA - NMNM78413A |
| SAN JUAN 28-7 UNIT | 181G | 3003926880 | Gas | PROD | DAKOTA | Federal | DK PA - NMNM78413C |
| SAN JUAN 28-7 UNIT | 181M | 3003925355 | Gas | PROD | DAKOTA | Federal | DK PA - NMNM78413C |
| SAN JUAN 28-7 UNIT | 181M | 3003925355 | Gas | PROD | MESAVERDE | Federal | MV PA - NMNM78413A |
| SAN JUAN 28-7 UNIT | 182 | 3003920722 | Gas | PROD | DAKOTA | Federal | DK PA - NMNM78413C |
| SAN JUAN 28-7 UNIT | 182F | 3003927000 | Gas | PROD | MESAVERDE | Federal | MV PA - NMNM78413A |
| SAN JUAN 28-7 UNIT | 182F | 3003927000 | Gas | PROD | DAKOTA | Federal | DK PA - NMNM78413C |
| SAN JUAN 28-7 UNIT | 182M | 3003925689 | Gas | PROD | MESAVERDE | Federal | MV PA - NMNM78413A |
| SAN JUAN 28-7 UNIT | 182M | 3003925689 | Gas | PROD | DAKOTA | Federal | DK PA - NMNM78413C |
| SAN JUAN 28-7 UNIT | 182N | 3003930635 | Gas | PROD | MESAVERDE | Federal | MV PA - NMNM78413A |
| SAN JUAN 28-7 UNIT | 182N | 3003930635 | Gas | PROD | DAKOTA | Federal | DK PA - NMNM78413C |
| SAN JUAN 28-7 UNIT | 183 | 3003920721 | Gas | PROD | DAKOTA | Federal | DK PA - NMNM78413C |
| SAN JUAN 28-7 UNIT | 183 | 3003920721 | Gas | PROD | MESAVERDE | Federal | MV PA - NMNM78413A |

| Well Name | Well No. | API | State Well Classification | Well Status | Reservoir | OCD Lease Type | Reporting Serial |
|--------------------|----------|------------|---------------------------|-------------|-----------|----------------|-------------------------|
| SAN JUAN 28-7 UNIT | 183F | 3003930257 | Gas | PROD | MESAVERDE | Federal | MV PA - NMNM78413A |
| SAN JUAN 28-7 UNIT | 183F | 3003930257 | Gas | PROD | DAKOTA | Federal | DK PA - NMNM78413C |
| SAN JUAN 28-7 UNIT | 183G | 3003930261 | Gas | PROD | DAKOTA | Federal | DK PA - NMNM78413C |
| SAN JUAN 28-7 UNIT | 183G | 3003930261 | Gas | PROD | MESAVERDE | Federal | MV PA - NMNM78413A |
| SAN JUAN 28-7 UNIT | 183M | 3003925660 | Gas | PROD | MESAVERDE | Federal | MV PA - NMNM78413A |
| SAN JUAN 28-7 UNIT | 183M | 3003925660 | Gas | PROD | DAKOTA | Federal | DK PA - NMNM78413C |
| SAN JUAN 28-7 UNIT | 184 | 3003920771 | Gas | PROD | MESAVERDE | Federal | MV PA - NMNM78413A |
| SAN JUAN 28-7 UNIT | 184 | 3003920771 | Gas | PROD | DAKOTA | Federal | DK PA - NMNM78413C |
| SAN JUAN 28-7 UNIT | 184F | 3003930407 | Gas | PROD | MESAVERDE | Federal | MV PA - NMNM78413A |
| SAN JUAN 28-7 UNIT | 184F | 3003930407 | Gas | PROD | DAKOTA | Federal | DK PA - NMNM78413C |
| SAN JUAN 28-7 UNIT | 184M | 3003926651 | Gas | PROD | MESAVERDE | Federal | MV PA - NMNM78413A |
| SAN JUAN 28-7 UNIT | 184M | 3003926651 | Gas | PROD | DAKOTA | Federal | DK PA - NMNM78413C |
| SAN JUAN 28-7 UNIT | 184P | 3003930677 | Gas | PROD | DAKOTA | Federal | DK PA - NMNM78413C |
| SAN JUAN 28-7 UNIT | 184P | 3003930677 | Gas | PROD | MESAVERDE | Federal | MV PA - NMNM78413A |
| SAN JUAN 28-7 UNIT | 185 | 3003920718 | Gas | PROD | DAKOTA | Federal | DK PA - NMNM78413C |
| SAN JUAN 28-7 UNIT | 185 | 3003920718 | Gas | PROD | MESAVERDE | Federal | Lease Basis - NMNM03521 |
| SAN JUAN 28-7 UNIT | 186 | 3003920644 | Gas | PROD | MESAVERDE | Federal | DK PA - NMNM78413C |
| SAN JUAN 28-7 UNIT | 186 | 3003920644 | Gas | PROD | DAKOTA | Federal | DK PA - NMNM78413C |
| SAN JUAN 28-7 UNIT | 186F | 3003926980 | Gas | PROD | MESAVERDE | Federal | MV PA - NMNM78413A |
| SAN JUAN 28-7 UNIT | 186F | 3003926980 | Gas | PROD | DAKOTA | Federal | DK PA - NMNM78413C |
| SAN JUAN 28-7 UNIT | 186M | 3003926095 | Gas | PROD | DAKOTA | Federal | DK PA - NMNM78413C |
| SAN JUAN 28-7 UNIT | 186M | 3003926095 | Gas | PROD | MESAVERDE | Federal | MV PA - NMNM78413A |
| SAN JUAN 28-7 UNIT | 187 | 3003920679 | Gas | PROD | DAKOTA | Federal | DK PA - NMNM78413C |
| SAN JUAN 28-7 UNIT | 187 | 3003920679 | Gas | PROD | MESAVERDE | Federal | MV PA - NMNM78413A |
| SAN JUAN 28-7 UNIT | 187E | 3003923747 | Gas | PROD | MANCOS | Federal | DK PA - NMNM78413C |
| SAN JUAN 28-7 UNIT | 187E | 3003923747 | Gas | PROD | MESAVERDE | Federal | DK PA - NMNM78413C |
| SAN JUAN 28-7 UNIT | 187E | 3003923747 | Gas | PROD | DAKOTA | Federal | DK PA - NMNM78413C |
| SAN JUAN 28-7 UNIT | 187M | 3003930376 | Gas | PROD | DAKOTA | Federal | DK PA - NMNM78413C |

| Well Name | Well No. | API | State Well Classification | Well Status | Reservoir | OCD Lease Type | Reporting Serial |
|--------------------|----------|------------|---------------------------|-------------|-----------|----------------|--------------------|
| SAN JUAN 28-7 UNIT | 187M | 3003930376 | Gas | PROD | MESAVERDE | Federal | MV PA - NMNM78413A |
| SAN JUAN 28-7 UNIT | 188 | 3003920769 | Gas | PROD | DAKOTA | Federal | DK PA - NMNM78413C |
| SAN JUAN 28-7 UNIT | 188 | 3003920769 | Gas | PROD | MESAVERDE | Federal | MV PA - NMNM78413A |
| SAN JUAN 28-7 UNIT | 188F | 3003927297 | Gas | PROD | DAKOTA | Federal | DK PA - NMNM78413C |
| SAN JUAN 28-7 UNIT | 188F | 3003927297 | Gas | PROD | MESAVERDE | Federal | MV PA - NMNM78413A |
| SAN JUAN 28-7 UNIT | 188M | 3003925556 | Gas | PROD | DAKOTA | Federal | DK PA - NMNM78413C |
| SAN JUAN 28-7 UNIT | 188M | 3003925556 | Gas | PROD | MESAVERDE | Federal | MV PA - NMNM78413A |
| SAN JUAN 28-7 UNIT | 188N | 3003930573 | Gas | PROD | MESAVERDE | Federal | MV PA - NMNM78413A |
| SAN JUAN 28-7 UNIT | 188N | 3003930573 | Gas | PROD | DAKOTA | Federal | DK PA - NMNM78413C |
| SAN JUAN 28-7 UNIT | 189 | 3003920589 | Gas | PROD | MESAVERDE | Federal | MV PA - NMNM78413A |
| SAN JUAN 28-7 UNIT | 189 | 3003920589 | Gas | PROD | DAKOTA | Federal | DK PA - NMNM78413C |
| SAN JUAN 28-7 UNIT | 189E | 3003923349 | Gas | PROD | CHACRA | Federal | DK PA - NMNM78413C |
| SAN JUAN 28-7 UNIT | 189E | 3003923349 | Gas | PROD | DAKOTA | Federal | DK PA - NMNM78413C |
| SAN JUAN 28-7 UNIT | 189E | 3003923349 | Gas | PROD | MESAVERDE | Federal | DK PA - NMNM78413C |
| SAN JUAN 28-7 UNIT | 189F | 3003926692 | Gas | PROD | MESAVERDE | Federal | MV PA - NMNM78413A |
| SAN JUAN 28-7 UNIT | 189F | 3003926692 | Gas | PROD | DAKOTA | Federal | DK PA - NMNM78413C |
| SAN JUAN 28-7 UNIT | 189M | 3003926695 | Gas | PROD | DAKOTA | Federal | DK PA - NMNM78413C |
| SAN JUAN 28-7 UNIT | 189M | 3003926695 | Gas | PROD | MESAVERDE | Federal | MV PA - NMNM78413A |
| SAN JUAN 28-7 UNIT | 190 | 3003920590 | Gas | PROD | DAKOTA | Federal | DK PA - NMNM78413C |
| SAN JUAN 28-7 UNIT | 190F | 3003926693 | Gas | PROD | MESAVERDE | Federal | MV PA - NMNM78413A |
| SAN JUAN 28-7 UNIT | 190F | 3003926693 | Gas | PROD | DAKOTA | Federal | DK PA - NMNM78413C |
| SAN JUAN 28-7 UNIT | 190G | 3003927255 | Gas | PROD | DAKOTA | Federal | DK PA - NMNM78413C |
| SAN JUAN 28-7 UNIT | 190G | 3003927255 | Gas | PROD | MESAVERDE | Federal | MV PA - NMNM78413A |
| SAN JUAN 28-7 UNIT | 190M | 3003926174 | Gas | PROD | DAKOTA | Federal | DK PA - NMNM78413C |
| SAN JUAN 28-7 UNIT | 190M | 3003926174 | Gas | PROD | MESAVERDE | Federal | MV PA - NMNM78413A |
| SAN JUAN 28-7 UNIT | 191E | 3003923753 | Gas | PROD | MESAVERDE | Federal | MV PA - NMNM78413A |
| SAN JUAN 28-7 UNIT | 191E | 3003923753 | Gas | PROD | DAKOTA | Federal | DK PA - NMNM78413C |
| SAN JUAN 28-7 UNIT | 191F | 3003927032 | Gas | PROD | MESAVERDE | Federal | MV PA - NMNM78413A |

| Well Name | Well No. | API | State Well Classification | Well Status | Reservoir | OCD Lease Type | Reporting Serial |
|--------------------|----------|------------|---------------------------|-------------|-----------------|----------------|--------------------|
| SAN JUAN 28-7 UNIT | 191F | 3003927032 | Gas | PROD | DAKOTA | Federal | DK PA - NMNM78413C |
| SAN JUAN 28-7 UNIT | 191G | 3003927060 | Gas | PROD | MESAVERDE | Federal | MV PA - NMNM78413A |
| SAN JUAN 28-7 UNIT | 191G | 3003927060 | Gas | PROD | DAKOTA | Federal | DK PA - NMNM78413C |
| SAN JUAN 28-7 UNIT | 191M | 3003920591 | Gas | PROD | MESAVERDE | Federal | MV PA - NMNM78413A |
| SAN JUAN 28-7 UNIT | 191M | 3003920591 | Gas | PROD | DAKOTA | Federal | DK PA - NMNM78413C |
| SAN JUAN 28-7 UNIT | 192 | 3003921691 | Gas | PROD | MESAVERDE | Federal | MV PA - NMNM78413A |
| SAN JUAN 28-7 UNIT | 192 | 3003921691 | Gas | PROD | DAKOTA | Federal | DK PA - NMNM78413C |
| SAN JUAN 28-7 UNIT | 192F | 3003927059 | Gas | PROD | DAKOTA | Federal | DK PA - NMNM78413C |
| SAN JUAN 28-7 UNIT | 192F | 3003927059 | Gas | PROD | MESAVERDE | Federal | MV PA - NMNM78413A |
| SAN JUAN 28-7 UNIT | 192M | 3003926205 | Gas | PROD | MESAVERDE | Federal | MV PA - NMNM78413A |
| SAN JUAN 28-7 UNIT | 192M | 3003926205 | Gas | PROD | DAKOTA | Federal | DK PA - NMNM78413C |
| SAN JUAN 28-7 UNIT | 193 | 3003920624 | Gas | PROD | MESAVERDE | Federal | MV PA - NMNM78413A |
| SAN JUAN 28-7 UNIT | 193F | 3003927048 | Gas | PROD | MESAVERDE | Federal | MV PA - NMNM78413A |
| SAN JUAN 28-7 UNIT | 193F | 3003927048 | Gas | PROD | DAKOTA | Federal | DK PA - NMNM78413C |
| SAN JUAN 28-7 UNIT | 193M | 3003925337 | Gas | PROD | DAKOTA | Federal | DK PA - NMNM78413C |
| SAN JUAN 28-7 UNIT | 193M | 3003925337 | Gas | PROD | MESAVERDE | Federal | MV PA - NMNM78413A |
| SAN JUAN 28-7 UNIT | 194 | 3003920630 | Gas | PROD | DAKOTA | Federal | DK PA - NMNM78413C |
| SAN JUAN 28-7 UNIT | 194 | 3003920630 | Gas | PROD | MESAVERDE | Federal | DK PA - NMNM78413C |
| SAN JUAN 28-7 UNIT | 194F | 3003930200 | Gas | PROD | MESAVERDE | Federal | MV PA - NMNM78413A |
| SAN JUAN 28-7 UNIT | 194F | 3003930200 | Gas | PROD | DAKOTA | Federal | DK PA - NMNM78413C |
| SAN JUAN 28-7 UNIT | 194G | 3003926970 | Gas | PROD | DAKOTA | FEE | DK PA - NMNM78413C |
| SAN JUAN 28-7 UNIT | 194G | 3003926970 | Gas | PROD | MESAVERDE | FEE | MV PA - NMNM78413A |
| SAN JUAN 28-7 UNIT | 194M | 3003922626 | Gas | PROD | MESAVERDE | Federal | MV PA - NMNM78413A |
| SAN JUAN 28-7 UNIT | 194M | 3003922626 | Gas | PROD | DAKOTA | Federal | DK PA - NMNM78413C |
| SAN JUAN 28-7 UNIT | 195E | 3003922361 | Gas | PROD | MESAVERDE | Federal | DK PA - NMNM78413C |
| SAN JUAN 28-7 UNIT | 195E | 3003922361 | Gas | PROD | MANCOS | Federal | DK PA - NMNM78413C |
| SAN JUAN 28-7 UNIT | 195E | 3003922361 | Gas | PROD | DAKOTA | Federal | DK PA - NMNM78413C |
| SAN JUAN 28-7 UNIT | 195F | 3003926975 | Gas | PROD | PICTURED CLIFFS | Federal | PC PA - NMNM78413B |

| Well Name | Well No. | API | State Well Classification | Well Status | Reservoir | OCD Lease Type | Reporting Serial |
|---------------------------|----------|------------|---------------------------|-------------|-----------------|----------------|--|
| SAN JUAN 28-7 UNIT | 195F | 3003926975 | Gas | PROD | MESAVERDE | Federal | MV PA - NMNM78413A |
| SAN JUAN 28-7 UNIT | 195F | 3003926975 | Gas | PROD | DAKOTA | Federal | DK PA - NMNM78413C |
| SAN JUAN 28-7 UNIT | 195M | 3003921689 | Gas | PROD | MESAVERDE | Federal | MV PA - NMNM78413A |
| SAN JUAN 28-7 UNIT | 195M | 3003921689 | Gas | PROD | DAKOTA | Federal | DK PA - NMNM78413C |
| SAN JUAN 28-7 UNIT | 195P | 3003930335 | Gas | PROD | MESAVERDE | Federal | MV PA - NMNM78413A |
| SAN JUAN 28-7 UNIT | 195P | 3003930335 | Gas | PROD | DAKOTA | Federal | DK PA - NMNM78413C |
| SAN JUAN 28-7 UNIT | 199 | 3003921734 | Gas | PROD | DAKOTA | Federal | DK PA - NMNM78413C |
| SAN JUAN 28-7 UNIT | 199E | 3003925816 | Gas | PROD | MESAVERDE | Federal | MV PA - NMNM78413A |
| SAN JUAN 28-7 UNIT | 199E | 3003925816 | Gas | PROD | DAKOTA | Federal | DK PA - NMNM78413C |
| SAN JUAN 28-7 UNIT | 199G | 3003927004 | Gas | PROD | MESAVERDE | Federal | MV PA - NMNM78413A |
| SAN JUAN 28-7 UNIT | 199G | 3003927004 | Gas | PROD | DAKOTA | Federal | DK PA - NMNM78413C |
| SAN JUAN 28-7 UNIT | 199M | 3003926718 | Gas | PROD | MESAVERDE | Federal | MV PA - NMNM78413A |
| SAN JUAN 28-7 UNIT | 199M | 3003926718 | Gas | PROD | DAKOTA | Federal | DK PA - NMNM78413C |
| SAN JUAN 28-7 UNIT | 199N | 3003930588 | Gas | PROD | MESAVERDE | Federal | MV PA - NMNM78413A |
| SAN JUAN 28-7 UNIT | 199N | 3003930588 | Gas | PROD | DAKOTA | Federal | DK PA - NMNM78413C |
| SAN JUAN 28-7 UNIT | 20 | 3003907446 | Gas | PROD | FRUITLAND COAL | Federal | Lease Basis - NMNM108250 |
| SAN JUAN 28-7 UNIT | 20 | 3003907446 | Gas | PROD | PICTURED CLIFFS | Federal | PC PA - NMNM78413B |
| SAN JUAN 28-7 UNIT | 20 | 3003907446 | Gas | PROD | MESAVERDE | Federal | MV PA - NMNM78413A |
| SAN JUAN 28-7 UNIT COM | 203N | 3003930632 | Gas | PROD | DAKOTA | Federal | Lease Basis - NMNM110449, Lease Basis - NMNM75815 |
| SAN JUAN 28-7 UNIT COM | 203N | 3003930632 | Gas | PROD | MESAVERDE | Federal | Lease Basis - NMNM110449, Lease Basis - NMNM75815 |
| SAN JUAN 28-7 UNIT | 207 | 3003920976 | Gas | PROD | PICTURED CLIFFS | Federal | PC PA - NMNM78413B |
| SAN JUAN 28-7 UNIT | 207 | 3003920976 | Gas | PROD | CHACRA | Federal | CH PA - NMNM78413D |
| SAN JUAN 28-7 UNIT | 208 | 3003921021 | Gas | PROD | CHACRA | Federal | CH PA - NMNM78413D |
| SAN JUAN 28-7 UNIT | 20A | 3003922207 | Gas | PROD | PICTURED CLIFFS | Federal | PC PA - NMNM78413B |
| SAN JUAN 28-7 UNIT | 20A | 3003922207 | Gas | PROD | MESAVERDE | Federal | MV PA - NMNM78413A |
| SAN JUAN 28-7 UNIT | 20B | 3003929951 | Gas | PROD | MESAVERDE | Federal | MV PA - NMNM78413A |

| Well Name | Well No. | API | State Well Classification | Well Status | Reservoir | OCD Lease Type | Reporting Serial |
|--------------------|----------|------------|---------------------------|-------------|-----------------|----------------|---------------------------|
| SAN JUAN 28-7 UNIT | 21 | 3003907449 | Gas | PROD | PICTURED CLIFFS | Federal | PC PA - NMNM78413B |
| SAN JUAN 28-7 UNIT | 21 | 3003907449 | Gas | PROD | MESAVERDE | Federal | MV PA - NMNM78413A |
| SAN JUAN 28-7 UNIT | 21 | 3003907449 | Gas | PROD | FRUITLAND COAL | Federal | Lease Basis - NMSF078497A |
| SAN JUAN 28-7 UNIT | 210 | 3003921018 | Gas | PROD | PICTURED CLIFFS | Federal | PC PA - NMNM78413B |
| SAN JUAN 28-7 UNIT | 214 | 3003920861 | Gas | PROD | DAKOTA | Federal | DK PA - NMNM78413C |
| SAN JUAN 28-7 UNIT | 214 | 3003920861 | Gas | PROD | MESAVERDE | Federal | MV PA - NMNM78413A |
| SAN JUAN 28-7 UNIT | 214F | 3003926902 | Gas | PROD | DAKOTA | Federal | DK PA - NMNM78413C |
| SAN JUAN 28-7 UNIT | 214F | 3003926902 | Gas | PROD | MESAVERDE | Federal | MV PA - NMNM78413A |
| SAN JUAN 28-7 UNIT | 214G | 3003927053 | Gas | PROD | DAKOTA | Federal | DK PA - NMNM78413C |
| SAN JUAN 28-7 UNIT | 214G | 3003927053 | Gas | PROD | MESAVERDE | Federal | MV PA - NMNM78413A |
| SAN JUAN 28-7 UNIT | 214M | 3003925793 | Gas | PROD | DAKOTA | Federal | DK PA - NMNM78413C |
| SAN JUAN 28-7 UNIT | 214M | 3003925793 | Gas | PROD | MESAVERDE | Federal | MV PA - NMNM78413A |
| SAN JUAN 28-7 UNIT | 215 | 3003920862 | Gas | PROD | MESAVERDE | Federal | MV PA - NMNM78413A |
| SAN JUAN 28-7 UNIT | 215 | 3003920862 | Gas | PROD | DAKOTA | Federal | DK PA - NMNM78413C |
| SAN JUAN 28-7 UNIT | 215F | 3003927040 | Gas | PROD | DAKOTA | Federal | DK PA - NMNM78413C |
| SAN JUAN 28-7 UNIT | 215F | 3003927040 | Gas | PROD | MESAVERDE | Federal | MV PA - NMNM78413A |
| SAN JUAN 28-7 UNIT | 215M | 3003925801 | Gas | PROD | MESAVERDE | Federal | MV PA - NMNM78413A |
| SAN JUAN 28-7 UNIT | 215M | 3003925801 | Gas | PROD | DAKOTA | Federal | DK PA - NMNM78413C |
| SAN JUAN 28-7 UNIT | 216 | 3003920875 | Gas | PROD | DAKOTA | Federal | DK PA - NMNM78413C |
| SAN JUAN 28-7 UNIT | 216 | 3003920875 | Gas | PROD | MESAVERDE | Federal | MV PA - NMNM78413A |
| SAN JUAN 28-7 UNIT | 216M | 3003926708 | Gas | PROD | DAKOTA | Federal | DK PA - NMNM78413C |
| SAN JUAN 28-7 UNIT | 216M | 3003926708 | Gas | PROD | MESAVERDE | Federal | MV PA - NMNM78413A |
| SAN JUAN 28-7 UNIT | 217 | 3003920972 | Gas | PROD | MESAVERDE | Federal | Lease Basis - NMSF078640 |
| SAN JUAN 28-7 UNIT | 217M | 3003930703 | Gas | PROD | MESAVERDE | Federal | Lease Basis - NMSF078640 |
| SAN JUAN 28-7 UNIT | 217M | 3003930703 | Gas | PROD | DAKOTA | Federal | DK PA - NMNM78413C |
| SAN JUAN 28-7 UNIT | 217N | 3003931089 | Gas | PROD | DAKOTA | Federal | DK PA - NMNM78413C |
| SAN JUAN 28-7 UNIT | 217N | 3003931089 | Gas | PROD | MESAVERDE | Federal | Lease Basis - NMSF078640 |
| SAN JUAN 28-7 UNIT | 218 | 3003920879 | Gas | PROD | MESAVERDE | Federal | DK PA - NMNM78413C |

| Well Name | Well No. | API | State Well Classification | Well Status | Reservoir | OCD Lease Type | Reporting Serial |
|--------------------|----------|------------|---------------------------|-------------|-----------------|----------------|--------------------------|
| SAN JUAN 28-7 UNIT | 218 | 3003920879 | Gas | PROD | DAKOTA | Federal | DK PA - NMNM78413C |
| SAN JUAN 28-7 UNIT | 218E | 3003926781 | Gas | PROD | MESAVERDE | Federal | DK PA - NMNM78413C |
| SAN JUAN 28-7 UNIT | 218E | 3003926781 | Gas | PROD | DAKOTA | Federal | DK PA - NMNM78413C |
| SAN JUAN 28-7 UNIT | 218M | 3003927012 | Gas | PROD | DAKOTA | Federal | DK PA - NMNM78413C |
| SAN JUAN 28-7 UNIT | 218M | 3003927012 | Gas | PROD | MESAVERDE | Federal | MV PA - NMNM78413A |
| SAN JUAN 28-7 UNIT | 219 | 3003920866 | Gas | PROD | MESAVERDE | Federal | MV PA - NMNM78413A |
| SAN JUAN 28-7 UNIT | 219 | 3003920866 | Gas | PROD | DAKOTA | Federal | DK PA - NMNM78413C |
| SAN JUAN 28-7 UNIT | 219E | 3003922624 | Gas | PROD | DAKOTA | Federal | DK PA - NMNM78413C |
| SAN JUAN 28-7 UNIT | 219F | 3003926958 | Gas | PROD | DAKOTA | Federal | DK PA - NMNM78413C |
| SAN JUAN 28-7 UNIT | 219F | 3003926958 | Gas | PROD | MESAVERDE | Federal | MV PA - NMNM78413A |
| SAN JUAN 28-7 UNIT | 219M | 3003926172 | Gas | PROD | DAKOTA | Federal | DK PA - NMNM78413C |
| SAN JUAN 28-7 UNIT | 219M | 3003926172 | Gas | PROD | MESAVERDE | Federal | MV PA - NMNM78413A |
| SAN JUAN 28-7 UNIT | 21A | 3003921945 | Gas | PROD | MESAVERDE | Federal | MV PA - NMNM78413A |
| SAN JUAN 28-7 UNIT | 22 | 3003907422 | Gas | PROD | MESAVERDE | Federal | MV PA - NMNM78413A |
| SAN JUAN 28-7 UNIT | 22 | 3003907422 | Gas | PROD | FRUITLAND COAL | Federal | Lease Basis - NMSF078417 |
| SAN JUAN 28-7 UNIT | 22 | 3003907422 | Gas | PROD | PICTURED CLIFFS | Federal | PC PA - NMNM78413B |
| SAN JUAN 28-7 UNIT | 220 | 3003920865 | Gas | PROD | DAKOTA | Federal | DK PA - NMNM78413C |
| SAN JUAN 28-7 UNIT | 220 | 3003920865 | Gas | PROD | MESAVERDE | Federal | DK PA - NMNM78413C |
| SAN JUAN 28-7 UNIT | 220F | 3003930289 | Gas | PROD | MESAVERDE | Federal | MV PA - NMNM78413A |
| SAN JUAN 28-7 UNIT | 220F | 3003930289 | Gas | PROD | DAKOTA | Federal | DK PA - NMNM78413C |
| SAN JUAN 28-7 UNIT | 220G | 3003930276 | Gas | PROD | MESAVERDE | Federal | MV PA - NMNM78413A |
| SAN JUAN 28-7 UNIT | 220G | 3003930276 | Gas | PROD | DAKOTA | Federal | DK PA - NMNM78413C |
| SAN JUAN 28-7 UNIT | 220M | 3003925398 | Gas | PROD | DAKOTA | Federal | DK PA - NMNM78413C |
| SAN JUAN 28-7 UNIT | 220M | 3003925398 | Gas | PROD | MESAVERDE | Federal | MV PA - NMNM78413A |
| SAN JUAN 28-7 UNIT | 221 | 3003921064 | Gas | PROD | DAKOTA | Federal | DK PA - NMNM78413C |
| SAN JUAN 28-7 UNIT | 221 | 3003921064 | Gas | PROD | MESAVERDE | Federal | MV PA - NMNM78413A |
| SAN JUAN 28-7 UNIT | 221F | 3003930146 | Gas | PROD | MESAVERDE | Federal | MV PA - NMNM78413A |
| SAN JUAN 28-7 UNIT | 221F | 3003930146 | Gas | PROD | DAKOTA | Federal | DK PA - NMNM78413C |

| Well Name | Well No. | API | State Well Classification | Well Status | Reservoir | OCD Lease Type | Reporting Serial |
|--------------------|----------|------------|---------------------------|-------------|-----------|----------------|--------------------|
| SAN JUAN 28-7 UNIT | 221G | 3003930228 | Gas | PROD | MESAVERDE | Federal | MV PA - NMNM78413A |
| SAN JUAN 28-7 UNIT | 221G | 3003930228 | Gas | PROD | DAKOTA | Federal | DK PA - NMNM78413C |
| SAN JUAN 28-7 UNIT | 221M | 3003925358 | Gas | PROD | MESAVERDE | Federal | MV PA - NMNM78413A |
| SAN JUAN 28-7 UNIT | 221M | 3003925358 | Gas | PROD | DAKOTA | Federal | DK PA - NMNM78413C |
| SAN JUAN 28-7 UNIT | 222 | 3003921003 | Gas | PROD | DAKOTA | Federal | DK PA - NMNM78413C |
| SAN JUAN 28-7 UNIT | 222 | 3003921003 | Gas | PROD | MESAVERDE | Federal | MV PA - NMNM78413A |
| SAN JUAN 28-7 UNIT | 222F | 3003930024 | Gas | PROD | DAKOTA | Federal | DK PA - NMNM78413C |
| SAN JUAN 28-7 UNIT | 222F | 3003930024 | Gas | PROD | MESAVERDE | Federal | MV PA - NMNM78413A |
| SAN JUAN 28-7 UNIT | 222M | 3003925562 | Gas | PROD | DAKOTA | Federal | DK PA - NMNM78413C |
| SAN JUAN 28-7 UNIT | 222M | 3003925562 | Gas | PROD | MESAVERDE | Federal | MV PA - NMNM78413A |
| SAN JUAN 28-7 UNIT | 223 | 3003920882 | Gas | PROD | MESAVERDE | Federal | MV PA - NMNM78413A |
| SAN JUAN 28-7 UNIT | 223 | 3003920882 | Gas | PROD | DAKOTA | Federal | DK PA - NMNM78413C |
| SAN JUAN 28-7 UNIT | 223F | 3003927257 | Gas | PROD | MESAVERDE | Federal | MV PA - NMNM78413A |
| SAN JUAN 28-7 UNIT | 223F | 3003927257 | Gas | PROD | DAKOTA | Federal | DK PA - NMNM78413C |
| SAN JUAN 28-7 UNIT | 223G | 3003926979 | Gas | PROD | MESAVERDE | Federal | MV PA - NMNM78413A |
| SAN JUAN 28-7 UNIT | 223G | 3003926979 | Gas | PROD | DAKOTA | Federal | DK PA - NMNM78413C |
| SAN JUAN 28-7 UNIT | 223M | 3003925553 | Gas | PROD | DAKOTA | Federal | DK PA - NMNM78413C |
| SAN JUAN 28-7 UNIT | 223M | 3003925553 | Gas | PROD | MESAVERDE | Federal | MV PA - NMNM78413A |
| SAN JUAN 28-7 UNIT | 224 | 3003921004 | Gas | PROD | DAKOTA | FEE | DK PA - NMNM78413C |
| SAN JUAN 28-7 UNIT | 224 | 3003921004 | Gas | PROD | MESAVERDE | FEE | MV PA - NMNM78413A |
| SAN JUAN 28-7 UNIT | 224F | 3003930270 | Gas | PROD | MESAVERDE | FEE | MV PA - NMNM78413A |
| SAN JUAN 28-7 UNIT | 224F | 3003930270 | Gas | PROD | DAKOTA | FEE | DK PA - NMNM78413C |
| SAN JUAN 28-7 UNIT | 224G | 3003930285 | Gas | PROD | MESAVERDE | Federal | MV PA - NMNM78413A |
| SAN JUAN 28-7 UNIT | 224G | 3003930285 | Gas | PROD | DAKOTA | Federal | DK PA - NMNM78413C |
| SAN JUAN 28-7 UNIT | 224M | 3003925697 | Gas | PROD | DAKOTA | Federal | DK PA - NMNM78413C |
| SAN JUAN 28-7 UNIT | 224M | 3003925697 | Gas | PROD | MESAVERDE | Federal | MV PA - NMNM78413A |
| SAN JUAN 28-7 UNIT | 225 | 3003920864 | Gas | PROD | DAKOTA | Federal | DK PA - NMNM78413C |
| SAN JUAN 28-7 UNIT | 225 | 3003920864 | Gas | PROD | MESAVERDE | Federal | MV PA - NMNM78413A |

| Well Name | Well No. | API | State Well Classification | Well Status | Reservoir | OCD Lease Type | Reporting Serial |
|--------------------|----------|------------|---------------------------|-------------|-----------------|----------------|--------------------|
| SAN JUAN 28-7 UNIT | 225E | 3003926173 | Gas | PROD | MESAVERDE | Federal | MV PA - NMNM78413A |
| SAN JUAN 28-7 UNIT | 225E | 3003926173 | Gas | PROD | DAKOTA | Federal | DK PA - NMNM78413C |
| SAN JUAN 28-7 UNIT | 225F | 3003926694 | Gas | PROD | MESAVERDE | Federal | MV PA - NMNM78413A |
| SAN JUAN 28-7 UNIT | 225F | 3003926694 | Gas | PROD | DAKOTA | Federal | DK PA - NMNM78413C |
| SAN JUAN 28-7 UNIT | 225M | 3003925545 | Gas | PROD | MESAVERDE | Federal | MV PA - NMNM78413A |
| SAN JUAN 28-7 UNIT | 225M | 3003925545 | Gas | PROD | DAKOTA | Federal | DK PA - NMNM78413C |
| SAN JUAN 28-7 UNIT | 226 | 3003920997 | Gas | PROD | DAKOTA | Federal | DK PA - NMNM78413C |
| SAN JUAN 28-7 UNIT | 226 | 3003920997 | Gas | PROD | MESAVERDE | Federal | MV PA - NMNM78413A |
| SAN JUAN 28-7 UNIT | 226E | 3003926176 | Gas | PROD | DAKOTA | Federal | DK PA - NMNM78413C |
| SAN JUAN 28-7 UNIT | 226E | 3003926176 | Gas | PROD | MESAVERDE | Federal | MV PA - NMNM78413A |
| SAN JUAN 28-7 UNIT | 226F | 3003930098 | Gas | PROD | DAKOTA | Federal | DK PA - NMNM78413C |
| SAN JUAN 28-7 UNIT | 226F | 3003930098 | Gas | PROD | MESAVERDE | Federal | MV PA - NMNM78413A |
| SAN JUAN 28-7 UNIT | 226M | 3003925694 | Gas | PROD | DAKOTA | Federal | DK PA - NMNM78413C |
| SAN JUAN 28-7 UNIT | 226M | 3003925694 | Gas | PROD | MESAVERDE | Federal | MV PA - NMNM78413A |
| SAN JUAN 28-7 UNIT | 227 | 3003920887 | Gas | PROD | MESAVERDE | Federal | MV PA - NMNM78413A |
| SAN JUAN 28-7 UNIT | 227 | 3003920887 | Gas | PROD | DAKOTA | Federal | MV PA - NMNM78413A |
| SAN JUAN 28-7 UNIT | 227F | 3003927261 | Gas | PROD | MESAVERDE | Federal | MV PA - NMNM78413A |
| SAN JUAN 28-7 UNIT | 227F | 3003927261 | Gas | PROD | DAKOTA | Federal | DK PA - NMNM78413C |
| SAN JUAN 28-7 UNIT | 227G | 3003926959 | Gas | PROD | DAKOTA | Federal | DK PA - NMNM78413C |
| SAN JUAN 28-7 UNIT | 227G | 3003926959 | Gas | PROD | MESAVERDE | Federal | MV PA - NMNM78413A |
| SAN JUAN 28-7 UNIT | 227M | 3003925661 | Gas | PROD | DAKOTA | Federal | DK PA - NMNM78413C |
| SAN JUAN 28-7 UNIT | 227M | 3003925661 | Gas | PROD | MESAVERDE | Federal | MV PA - NMNM78413A |
| SAN JUAN 28-7 UNIT | 228 | 3003920990 | Gas | PROD | PICTURED CLIFFS | Federal | PC PA - NMNM78413B |
| SAN JUAN 28-7 UNIT | 228 | 3003920990 | Gas | PROD | DAKOTA | Federal | DK PA - NMNM78413C |
| SAN JUAN 28-7 UNIT | 228 | 3003920990 | Gas | PROD | MESAVERDE | Federal | MV PA - NMNM78413A |
| SAN JUAN 28-7 UNIT | 228F | 3003926951 | Gas | PROD | MESAVERDE | Federal | MV PA - NMNM78413A |
| SAN JUAN 28-7 UNIT | 228F | 3003926951 | Gas | PROD | DAKOTA | Federal | DK PA - NMNM78413C |
| SAN JUAN 28-7 UNIT | 228M | 3003926686 | Gas | PROD | DAKOTA | Federal | DK PA - NMNM78413C |

| Well Name | Well No. | API | State Well Classification | Well Status | Reservoir | OCD Lease Type | Reporting Serial |
|--------------------|----------|------------|---------------------------|-------------|-----------------|----------------|--------------------------|
| SAN JUAN 28-7 UNIT | 228M | 3003926686 | Gas | PROD | MESAVERDE | Federal | MV PA - NMNM78413A |
| SAN JUAN 28-7 UNIT | 229 | 3003920994 | Gas | PROD | MESAVERDE | Federal | MV PA - NMNM78413A |
| SAN JUAN 28-7 UNIT | 229 | 3003920994 | Gas | PROD | DAKOTA | Federal | DK PA - NMNM78413C |
| SAN JUAN 28-7 UNIT | 229E | 3003926206 | Gas | PROD | DAKOTA | Federal | DK PA - NMNM78413C |
| SAN JUAN 28-7 UNIT | 229E | 3003926206 | Gas | PROD | MESAVERDE | Federal | MV PA - NMNM78413A |
| SAN JUAN 28-7 UNIT | 229F | 3003930375 | Gas | PROD | DAKOTA | Federal | DK PA - NMNM78413C |
| SAN JUAN 28-7 UNIT | 229F | 3003930375 | Gas | PROD | MESAVERDE | Federal | MV PA - NMNM78413A |
| SAN JUAN 28-7 UNIT | 22A | 3003921936 | Gas | PROD | MESAVERDE | Federal | MV PA - NMNM78413A |
| SAN JUAN 28-7 UNIT | 22A | 3003921936 | Gas | PROD | PICTURED CLIFFS | Federal | PC PA - NMNM78413B |
| SAN JUAN 28-7 UNIT | 23 | 3003907433 | Gas | PROD | PICTURED CLIFFS | Federal | Lease Basis - NMSF079289 |
| SAN JUAN 28-7 UNIT | 23 | 3003907433 | Gas | PROD | MESAVERDE | Federal | MV PA - NMNM78413A |
| SAN JUAN 28-7 UNIT | 230 | 3003920996 | Gas | PROD | MANCOS | Federal | DK PA - NMNM78413C |
| SAN JUAN 28-7 UNIT | 230 | 3003920996 | Gas | PROD | DAKOTA | Federal | DK PA - NMNM78413C |
| SAN JUAN 28-7 UNIT | 230F | 3003926938 | Gas | PROD | DAKOTA | Federal | DK PA - NMNM78413C |
| SAN JUAN 28-7 UNIT | 230M | 3003926091 | Gas | PROD | DAKOTA | Federal | DK PA - NMNM78413C |
| SAN JUAN 28-7 UNIT | 230M | 3003926091 | Gas | PROD | MESAVERDE | Federal | MV PA - NMNM78413A |
| SAN JUAN 28-7 UNIT | 230N | 3003930610 | Gas | PROD | MESAVERDE | Federal | MV PA - NMNM78413A |
| SAN JUAN 28-7 UNIT | 230N | 3003930610 | Gas | PROD | DAKOTA | Federal | DK PA - NMNM78413C |
| SAN JUAN 28-7 UNIT | 231E | 3003922436 | Gas | PROD | MESAVERDE | Federal | MV PA - NMNM78413A |
| SAN JUAN 28-7 UNIT | 231E | 3003922436 | Gas | PROD | DAKOTA | Federal | DK PA - NMNM78413C |
| SAN JUAN 28-7 UNIT | 231F | 3003926974 | Gas | PROD | MESAVERDE | Federal | MV PA - NMNM78413A |
| SAN JUAN 28-7 UNIT | 231F | 3003926974 | Gas | PROD | DAKOTA | Federal | DK PA - NMNM78413C |
| SAN JUAN 28-7 UNIT | 231M | 3003920992 | Gas | PROD | DAKOTA | Federal | DK PA - NMNM78413C |
| SAN JUAN 28-7 UNIT | 231M | 3003920992 | Gas | PROD | MESAVERDE | Federal | MV PA - NMNM78413A |
| SAN JUAN 28-7 UNIT | 232 | 3003920993 | Gas | PROD | MESAVERDE | Federal | MV PA - NMNM78413A |
| SAN JUAN 28-7 UNIT | 232 | 3003920993 | Gas | PROD | DAKOTA | Federal | DK PA - NMNM78413C |
| SAN JUAN 28-7 UNIT | 232F | 3003927043 | Gas | PROD | DAKOTA | Federal | DK PA - NMNM78413C |
| SAN JUAN 28-7 UNIT | 232G | 3003929950 | Gas | PROD | MESAVERDE | Federal | MV PA - NMNM78413A |

| Well Name | Well No. | API | State Well Classification | Well Status | Reservoir | OCD Lease Type | Reporting Serial |
|--------------------|----------|------------|---------------------------|-------------|-----------|----------------|--------------------|
| SAN JUAN 28-7 UNIT | 232G | 3003929950 | Gas | PROD | DAKOTA | Federal | DK PA - NMNM78413C |
| SAN JUAN 28-7 UNIT | 232M | 3003925693 | Gas | PROD | DAKOTA | Federal | DK PA - NMNM78413C |
| SAN JUAN 28-7 UNIT | 232M | 3003925693 | Gas | PROD | MESAVERDE | Federal | MV PA - NMNM78413A |
| SAN JUAN 28-7 UNIT | 233E | 3003922619 | Gas | PROD | DAKOTA | Federal | DK PA - NMNM78413C |
| SAN JUAN 28-7 UNIT | 233E | 3003922619 | Gas | PROD | MESAVERDE | Federal | DK PA - NMNM78413C |
| SAN JUAN 28-7 UNIT | 233F | 3003926967 | Gas | PROD | DAKOTA | Federal | DK PA - NMNM78413C |
| SAN JUAN 28-7 UNIT | 233F | 3003926967 | Gas | PROD | MESAVERDE | Federal | MV PA - NMNM78413A |
| SAN JUAN 28-7 UNIT | 233G | 3003927005 | Gas | PROD | DAKOTA | Federal | DK PA - NMNM78413C |
| SAN JUAN 28-7 UNIT | 233G | 3003927005 | Gas | PROD | MESAVERDE | Federal | DK PA - NMNM78413C |
| SAN JUAN 28-7 UNIT | 233M | 3003921328 | Gas | PROD | DAKOTA | Federal | DK PA - NMNM78413C |
| SAN JUAN 28-7 UNIT | 233M | 3003921328 | Gas | PROD | MESAVERDE | Federal | MV PA - NMNM78413A |
| SAN JUAN 28-7 UNIT | 234 | 3003921063 | Gas | PROD | DAKOTA | Federal | DK PA - NMNM78413C |
| SAN JUAN 28-7 UNIT | 234 | 3003921063 | Gas | PROD | MESAVERDE | Federal | MV PA - NMNM78413A |
| SAN JUAN 28-7 UNIT | 234E | 3003922396 | Gas | PROD | DAKOTA | Federal | DK PA - NMNM78413C |
| SAN JUAN 28-7 UNIT | 234M | 3003926213 | Gas | PROD | DAKOTA | Federal | DK PA - NMNM78413C |
| SAN JUAN 28-7 UNIT | 234M | 3003926213 | Gas | PROD | MESAVERDE | Federal | MV PA - NMNM78413A |
| SAN JUAN 28-7 UNIT | 234P | 3003930642 | Gas | PROD | MESAVERDE | Federal | MV PA - NMNM78413A |
| SAN JUAN 28-7 UNIT | 234P | 3003930642 | Gas | PROD | DAKOTA | Federal | DK PA - NMNM78413C |
| SAN JUAN 28-7 UNIT | 235 | 3003921327 | Gas | PROD | DAKOTA | Federal | DK PA - NMNM78413C |
| SAN JUAN 28-7 UNIT | 235 | 3003921327 | Gas | PROD | MESAVERDE | Federal | DK PA - NMNM78413C |
| SAN JUAN 28-7 UNIT | 235M | 3003926224 | Gas | PROD | DAKOTA | Federal | DK PA - NMNM78413C |
| SAN JUAN 28-7 UNIT | 235M | 3003926224 | Gas | PROD | MESAVERDE | Federal | MV PA - NMNM78413A |
| SAN JUAN 28-7 UNIT | 236 | 3003921661 | Gas | PROD | MESAVERDE | Federal | DK PA - NMNM78413C |
| SAN JUAN 28-7 UNIT | 236 | 3003921661 | Gas | PROD | MANCOS | Federal | DK PA - NMNM78413C |
| SAN JUAN 28-7 UNIT | 236 | 3003921661 | Gas | PROD | DAKOTA | Federal | DK PA - NMNM78413C |
| SAN JUAN 28-7 UNIT | 236G | 3003927050 | Gas | PROD | DAKOTA | Federal | DK PA - NMNM78413C |
| SAN JUAN 28-7 UNIT | 236G | 3003927050 | Gas | PROD | MESAVERDE | Federal | MV PA - NMNM78413A |
| SAN JUAN 28-7 UNIT | 236M | 3003926604 | Gas | PROD | DAKOTA | Federal | DK PA - NMNM78413C |

| Well Name | Well No. | API | State Well Classification | Well Status | Reservoir | OCD Lease Type | Reporting Serial |
|--------------------|----------|------------|---------------------------|-------------|----------------|----------------|-------------------------------|
| SAN JUAN 28-7 UNIT | 236M | 3003926604 | Gas | PROD | MESAVERDE | Federal | MV PA - NMNM78413A |
| SAN JUAN 28-7 UNIT | 236P | 3003930849 | Gas | PROD | DAKOTA | Federal | DK PA - NMNM78413C |
| SAN JUAN 28-7 UNIT | 236P | 3003930849 | Gas | PROD | MESAVERDE | Federal | MV PA - NMNM78413A |
| SAN JUAN 28-7 UNIT | 237 | 3003921663 | Gas | PROD | MESAVERDE | Federal | MV PA - NMNM78413A |
| SAN JUAN 28-7 UNIT | 237 | 3003921663 | Gas | PROD | DAKOTA | Federal | DK PA - NMNM78413C |
| SAN JUAN 28-7 UNIT | 237M | 3003925822 | Gas | PROD | DAKOTA | Federal | DK PA - NMNM78413C |
| SAN JUAN 28-7 UNIT | 237M | 3003925822 | Gas | PROD | MESAVERDE | Federal | MV PA - NMNM78413A |
| SAN JUAN 28-7 UNIT | 238F | 3003926603 | Gas | PROD | MESAVERDE | Federal | MV PA - NMNM78413A |
| SAN JUAN 28-7 UNIT | 238F | 3003926603 | Gas | PROD | DAKOTA | Federal | DK PA - NMNM78413C |
| SAN JUAN 28-7 UNIT | 238M | 3003926168 | Gas | PROD | MESAVERDE | Federal | MV PA - NMNM78413A |
| SAN JUAN 28-7 UNIT | 238M | 3003926168 | Gas | PROD | DAKOTA | Federal | DK PA - NMNM78413C |
| SAN JUAN 28-7 UNIT | 238N | 3003931150 | Gas | PROD | MESAVERDE | Federal | DK PA - NMNM78413C |
| SAN JUAN 28-7 UNIT | 238N | 3003931150 | Gas | PROD | MANCOS | Federal | DK PA - NMNM78413C |
| SAN JUAN 28-7 UNIT | 238N | 3003931150 | Gas | PROD | DAKOTA | Federal | DK PA - NMNM78413C |
| SAN JUAN 28-7 UNIT | 238R | 3003925336 | Gas | PROD | FRUITLAND COAL | Federal | FC PA - FC PA - NMNM78413E |
| SAN JUAN 28-7 UNIT | 239 | 3003921080 | Gas | PROD | MESAVERDE | Federal | MV PA - NMNM78413A |
| SAN JUAN 28-7 UNIT | 239 | 3003921080 | Gas | PROD | DAKOTA | Federal | DK PA - NMNM78413C |
| SAN JUAN 28-7 UNIT | 239E | 3003922362 | Gas | PROD | DAKOTA | Federal | DK PA - NMNM78413C |
| SAN JUAN 28-7 UNIT | 239E | 3003922362 | Gas | PROD | MESAVERDE | Federal | MV PA - NMNM78413A |
| SAN JUAN 28-7 UNIT | 239M | 3003930243 | Gas | PROD | MESAVERDE | Federal | MV PA - NMNM78413A |
| SAN JUAN 28-7 UNIT | 239M | 3003930243 | Gas | PROD | DAKOTA | Federal | DK PA - NMNM78413C |
| SAN JUAN 28-7 UNIT | 24 | 3003907425 | Gas | PROD | MESAVERDE | Federal | MV PA - NMNM78413A |
| SAN JUAN 28-7 UNIT | 240 | 3003921082 | Gas | PROD | CHACRA | Federal | CH PA - NMNM78413D |
| SAN JUAN 28-7 UNIT | 241 | 3003921081 | Gas | PROD | MESAVERDE | Federal | MV PA - NMNM78413A |
| SAN JUAN 28-7 UNIT | 241 | 3003921081 | Gas | PROD | DAKOTA | Federal | DK PA - NMNM78413C |
| SAN JUAN 28-7 UNIT | 241E | 3003922395 | Gas | PROD | MESAVERDE | Federal | MV PA - NMNM78413A |
| SAN JUAN 28-7 UNIT | 241E | 3003922395 | Gas | PROD | DAKOTA | Federal | DK PA - NMNM78413C |

| Well Name | Well No. | API | State Well Classification | Well Status | Reservoir | OCD Lease Type | Reporting Serial |
|--------------------|----------|------------|---------------------------|-------------|-----------------|----------------|-------------------------------|
| SAN JUAN 28-7 UNIT | 241F | 3003927006 | Gas | PROD | DAKOTA | Federal | DK PA - NMNM78413C |
| SAN JUAN 28-7 UNIT | 241M | 3003927039 | Gas | PROD | MESAVERDE | Federal | MV PA - NMNM78413A |
| SAN JUAN 28-7 UNIT | 241M | 3003927039 | Gas | PROD | DAKOTA | Federal | DK PA - NMNM78413C |
| SAN JUAN 28-7 UNIT | 242 | 3003921093 | Gas | PROD | MESAVERDE | Federal | DK PA - NMNM78413C |
| SAN JUAN 28-7 UNIT | 242 | 3003921093 | Gas | PROD | DAKOTA | Federal | DK PA - NMNM78413C |
| SAN JUAN 28-7 UNIT | 242 | 3003921093 | Gas | PROD | CHACRA | Federal | DK PA - NMNM78413C |
| SAN JUAN 28-7 UNIT | 242F | 3003927038 | Gas | PROD | DAKOTA | Federal | DK PA - NMNM78413C |
| SAN JUAN 28-7 UNIT | 242F | 3003927038 | Gas | PROD | MESAVERDE | Federal | MV PA - NMNM78413A |
| SAN JUAN 28-7 UNIT | 242M | 3003922359 | Gas | PROD | DAKOTA | Federal | DK PA - NMNM78413C |
| SAN JUAN 28-7 UNIT | 242M | 3003922359 | Gas | PROD | MESAVERDE | Federal | MV PA - NMNM78413A |
| SAN JUAN 28-7 UNIT | 243 | 3003921084 | Gas | PROD | MESAVERDE | Federal | MV PA - NMNM78413A |
| SAN JUAN 28-7 UNIT | 243 | 3003921084 | Gas | PROD | DAKOTA | Federal | DK PA - NMNM78413C |
| SAN JUAN 28-7 UNIT | 243M | 3003926590 | Gas | PROD | MESAVERDE | Federal | MV PA - NMNM78413A |
| SAN JUAN 28-7 UNIT | 243M | 3003926590 | Gas | PROD | DAKOTA | Federal | DK PA - NMNM78413C |
| SAN JUAN 28-7 UNIT | 243P | 3003930887 | Gas | PROD | MESAVERDE | Federal | MV PA - NMNM78413A |
| SAN JUAN 28-7 UNIT | 243P | 3003930887 | Gas | PROD | DAKOTA | Federal | DK PA - NMNM78413C |
| SAN JUAN 28-7 UNIT | 244 | 3003921083 | Gas | PROD | DAKOTA | Federal | DK PA - NMNM78413C |
| SAN JUAN 28-7 UNIT | 244 | 3003921083 | Gas | PROD | MESAVERDE | Federal | MV PA - NMNM78413A |
| SAN JUAN 28-7 UNIT | 244 | 3003921083 | Gas | PROD | CHACRA | Federal | CH PA - NMNM78413D |
| SAN JUAN 28-7 UNIT | 244M | 3003926873 | Gas | PROD | MESAVERDE | Federal | MV PA - NMNM78413A |
| SAN JUAN 28-7 UNIT | 244M | 3003926873 | Gas | PROD | DAKOTA | Federal | DK PA - NMNM78413C |
| SAN JUAN 28-7 UNIT | 244N | 3003930762 | Gas | PROD | DAKOTA | Federal | DK PA - NMNM78413C |
| SAN JUAN 28-7 UNIT | 244N | 3003930762 | Gas | PROD | MESAVERDE | Federal | MV PA - NMNM78413A |
| SAN JUAN 28-7 UNIT | 245 | 3003921179 | Gas | PROD | PICTURED CLIFFS | Federal | PC PA - NMNM78413B |
| SAN JUAN 28-7 UNIT | 245 | 3003921179 | Gas | PROD | FRUITLAND COAL | Federal | FC PA - FC PA - NMNM78413E |
| SAN JUAN 28-7 UNIT | 246 | 3003921649 | Gas | PROD | DAKOTA | Federal | DK PA - NMNM78413C |
| SAN JUAN 28-7 UNIT | 246 | 3003921649 | Gas | PROD | MESAVERDE | Federal | MV PA - NMNM78413A |

| Well Name | Well No. | API | State Well Classification | Well Status | Reservoir | OCD Lease Type | Reporting Serial |
|--------------------|----------|------------|---------------------------|-------------|----------------|----------------|----------------------------|
| SAN JUAN 28-7 UNIT | 246E | 3003922360 | Gas | PROD | DAKOTA | Federal | DK PA - NMNM78413C |
| SAN JUAN 28-7 UNIT | 246E | 3003922360 | Gas | PROD | MESAVERDE | Federal | DK PA - NMNM78413C |
| SAN JUAN 28-7 UNIT | 246M | 3003927047 | Gas | PROD | MESAVERDE | Federal | DK PA - NMNM78413C |
| SAN JUAN 28-7 UNIT | 246M | 3003927047 | Gas | PROD | DAKOTA | Federal | DK PA - NMNM78413C |
| SAN JUAN 28-7 UNIT | 247 | 3003921650 | Gas | PROD | MESAVERDE | Federal | DK PA - NMNM78413C |
| SAN JUAN 28-7 UNIT | 247 | 3003921650 | Gas | PROD | DAKOTA | Federal | DK PA - NMNM78413C |
| SAN JUAN 28-7 UNIT | 247E | 3003927015 | Gas | PROD | MESAVERDE | Federal | DK PA - NMNM78413C |
| SAN JUAN 28-7 UNIT | 247E | 3003927015 | Gas | PROD | DAKOTA | Federal | DK PA - NMNM78413C |
| SAN JUAN 28-7 UNIT | 247F | 3003930269 | Gas | PROD | MESAVERDE | Federal | MV PA - NMNM78413A |
| SAN JUAN 28-7 UNIT | 247F | 3003930269 | Gas | PROD | DAKOTA | Federal | DK PA - NMNM78413C |
| SAN JUAN 28-7 UNIT | 247M | 3003926225 | Gas | PROD | DAKOTA | Federal | DK PA - NMNM78413C |
| SAN JUAN 28-7 UNIT | 247M | 3003926225 | Gas | PROD | MESAVERDE | Federal | MV PA - NMNM78413A |
| SAN JUAN 28-7 UNIT | 248 | 3003921651 | Gas | PROD | DAKOTA | Federal | DK PA - NMNM78413C |
| SAN JUAN 28-7 UNIT | 248E | 3003922364 | Gas | PROD | DAKOTA | Federal | DK PA - NMNM78413C |
| SAN JUAN 28-7 UNIT | 248E | 3003922364 | Gas | PROD | CHACRA | Federal | DK PA - NMNM78413C |
| SAN JUAN 28-7 UNIT | 248E | 3003922364 | Gas | PROD | MESAVERDE | Federal | DK PA - NMNM78413C |
| SAN JUAN 28-7 UNIT | 248F | 3003930204 | Gas | PROD | DAKOTA | Federal | DK PA - NMNM78413C |
| SAN JUAN 28-7 UNIT | 248F | 3003930204 | Gas | PROD | MESAVERDE | Federal | MV PA - NMNM78413A |
| SAN JUAN 28-7 UNIT | 248M | 3003930193 | Gas | PROD | MESAVERDE | Federal | MV PA - NMNM78413A |
| SAN JUAN 28-7 UNIT | 248M | 3003930193 | Gas | PROD | DAKOTA | Federal | DK PA - NMNM78413C |
| SAN JUAN 28-7 UNIT | 249 | 3003921636 | Gas | PROD | FRUITLAND COAL | FEE | FC PA - FC PA - NMNM78413E |
| SAN JUAN 28-7 UNIT | 249 | 3003921636 | Gas | PROD | CHACRA | FEE | Lease Basis - NMNM114818 |
| SAN JUAN 28-7 UNIT | 249F | 3003926605 | Gas | PROD | MESAVERDE | Federal | MV PA - NMNM78413A |
| SAN JUAN 28-7 UNIT | 249F | 3003926605 | Gas | PROD | DAKOTA | Federal | DK PA - NMNM78413C |
| SAN JUAN 28-7 UNIT | 249G | 3003930339 | Gas | PROD | DAKOTA | FEE | DK PA - NMNM78413C |
| SAN JUAN 28-7 UNIT | 249G | 3003930339 | Gas | PROD | MESAVERDE | FEE | MV PA - NMNM78413A |
| SAN JUAN 28-7 UNIT | 249M | 3003925802 | Gas | PROD | DAKOTA | Federal | DK PA - NMNM78413C |

| Well Name | Well No. | API | State Well Classification | Well Status | Reservoir | OCD Lease Type | Reporting Serial |
|--------------------|----------|------------|---------------------------|-------------|-----------------|----------------|--------------------|
| SAN JUAN 28-7 UNIT | 249M | 3003925802 | Gas | PROD | MESAVERDE | Federal | MV PA - NMNM78413A |
| SAN JUAN 28-7 UNIT | 24A | 3003921946 | Gas | PROD | MESAVERDE | Federal | MV PA - NMNM78413A |
| SAN JUAN 28-7 UNIT | 25 | 3003907365 | Gas | PROD | PICTURED CLIFFS | Federal | PC PA - NMNM78413B |
| SAN JUAN 28-7 UNIT | 25 | 3003907365 | Gas | PROD | MESAVERDE | Federal | MV PA - NMNM78413A |
| SAN JUAN 28-7 UNIT | 250 | 3003921637 | Gas | PROD | DAKOTA | FEE | DK PA - NMNM78413C |
| SAN JUAN 28-7 UNIT | 250 | 3003921637 | Gas | PROD | MESAVERDE | FEE | MV PA - NMNM78413A |
| SAN JUAN 28-7 UNIT | 250M | 3003926452 | Gas | PROD | MESAVERDE | Federal | MV PA - NMNM78413A |
| SAN JUAN 28-7 UNIT | 250M | 3003926452 | Gas | PROD | DAKOTA | Federal | DK PA - NMNM78413C |
| SAN JUAN 28-7 UNIT | 251 | 3003921652 | Gas | PROD | MESAVERDE | Federal | MV PA - NMNM78413A |
| SAN JUAN 28-7 UNIT | 251 | 3003921652 | Gas | PROD | DAKOTA | Federal | DK PA - NMNM78413C |
| SAN JUAN 28-7 UNIT | 251M | 3003930671 | Gas | PROD | DAKOTA | Federal | DK PA - NMNM78413C |
| SAN JUAN 28-7 UNIT | 251M | 3003930671 | Gas | PROD | MESAVERDE | Federal | MV PA - NMNM78413A |
| SAN JUAN 28-7 UNIT | 251N | 3003930709 | Gas | PROD | MESAVERDE | Federal | MV PA - NMNM78413A |
| SAN JUAN 28-7 UNIT | 251N | 3003930709 | Gas | PROD | DAKOTA | Federal | DK PA - NMNM78413C |
| SAN JUAN 28-7 UNIT | 252 | 3003921653 | Gas | PROD | MESAVERDE | Federal | MV PA - NMNM78413A |
| SAN JUAN 28-7 UNIT | 252 | 3003921653 | Gas | PROD | DAKOTA | Federal | DK PA - NMNM78413C |
| SAN JUAN 28-7 UNIT | 252E | 3003923748 | Gas | PROD | MESAVERDE | Federal | MV PA - NMNM78413A |
| SAN JUAN 28-7 UNIT | 252F | 3003926879 | Gas | PROD | DAKOTA | Federal | DK PA - NMNM78413C |
| SAN JUAN 28-7 UNIT | 252F | 3003926879 | Gas | PROD | MESAVERDE | Federal | MV PA - NMNM78413A |
| SAN JUAN 28-7 UNIT | 252M | 3003926754 | Gas | PROD | MESAVERDE | Federal | MV PA - NMNM78413A |
| SAN JUAN 28-7 UNIT | 252M | 3003926754 | Gas | PROD | DAKOTA | Federal | DK PA - NMNM78413C |
| SAN JUAN 28-7 UNIT | 253 | 3003921681 | Gas | PROD | MESAVERDE | Federal | MV PA - NMNM78413A |
| SAN JUAN 28-7 UNIT | 253 | 3003921681 | Gas | PROD | DAKOTA | Federal | DK PA - NMNM78413C |
| SAN JUAN 28-7 UNIT | 253M | 3003926794 | Gas | PROD | DAKOTA | Federal | DK PA - NMNM78413C |
| SAN JUAN 28-7 UNIT | 253M | 3003926794 | Gas | PROD | MESAVERDE | Federal | MV PA - NMNM78413A |
| SAN JUAN 28-7 UNIT | 253N | 3003931032 | Gas | PROD | DAKOTA | Federal | DK PA - NMNM78413C |
| SAN JUAN 28-7 UNIT | 253N | 3003931032 | Gas | PROD | MESAVERDE | Federal | MV PA - NMNM78413A |
| SAN JUAN 28-7 UNIT | 254 | 3003921680 | Gas | PROD | MESAVERDE | Federal | MV PA - NMNM78413A |

| Well Name | Well No. | API | State Well Classification | Well Status | Reservoir | OCD Lease Type | Reporting Serial |
|--------------------|----------|------------|---------------------------|-------------|-----------|----------------|--------------------|
| SAN JUAN 28-7 UNIT | 254 | 3003921680 | Gas | PROD | DAKOTA | Federal | DK PA - NMNM78413C |
| SAN JUAN 28-7 UNIT | 254M | 3003926666 | Gas | PROD | DAKOTA | Federal | DK PA - NMNM78413C |
| SAN JUAN 28-7 UNIT | 254M | 3003926666 | Gas | PROD | MESAVERDE | Federal | MV PA - NMNM78413A |
| SAN JUAN 28-7 UNIT | 254N | 3003930884 | Gas | PROD | DAKOTA | Federal | DK PA - NMNM78413C |
| SAN JUAN 28-7 UNIT | 254N | 3003930884 | Gas | PROD | MESAVERDE | Federal | MV PA - NMNM78413A |
| SAN JUAN 28-7 UNIT | 255 | 3003921721 | Gas | PROD | DAKOTA | Federal | DK PA - NMNM78413C |
| SAN JUAN 28-7 UNIT | 255 | 3003921721 | Gas | PROD | MESAVERDE | Federal | MV PA - NMNM78413A |
| SAN JUAN 28-7 UNIT | 255E | 3003922397 | Gas | PROD | DAKOTA | Federal | DK PA - NMNM78413C |
| SAN JUAN 28-7 UNIT | 255E | 3003922397 | Gas | PROD | MESAVERDE | Federal | MV PA - NMNM78413A |
| SAN JUAN 28-7 UNIT | 255F | 3003929980 | Gas | PROD | DAKOTA | Federal | DK PA - NMNM78413C |
| SAN JUAN 28-7 UNIT | 255F | 3003929980 | Gas | PROD | MESAVERDE | Federal | MV PA - NMNM78413A |
| SAN JUAN 28-7 UNIT | 255M | 3003930288 | Gas | PROD | MESAVERDE | Federal | MV PA - NMNM78413A |
| SAN JUAN 28-7 UNIT | 255M | 3003930288 | Gas | PROD | DAKOTA | Federal | DK PA - NMNM78413C |
| SAN JUAN 28-7 UNIT | 256 | 3003921731 | Gas | PROD | DAKOTA | Federal | DK PA - NMNM78413C |
| SAN JUAN 28-7 UNIT | 256 | 3003921731 | Gas | PROD | MESAVERDE | Federal | MV PA - NMNM78413A |
| SAN JUAN 28-7 UNIT | 256E | 3003922363 | Gas | PROD | DAKOTA | Federal | DK PA - NMNM78413C |
| SAN JUAN 28-7 UNIT | 256E | 3003922363 | Gas | PROD | CHACRA | Federal | DK PA - NMNM78413C |
| SAN JUAN 28-7 UNIT | 256E | 3003922363 | Gas | PROD | MESAVERDE | Federal | DK PA - NMNM78413C |
| SAN JUAN 28-7 UNIT | 257 | 3003921733 | Gas | PROD | DAKOTA | Federal | DK PA - NMNM78413C |
| SAN JUAN 28-7 UNIT | 257 | 3003921733 | Gas | PROD | MANCOS | Federal | DK PA - NMNM78413C |
| SAN JUAN 28-7 UNIT | 257 | 3003921733 | Gas | PROD | MESAVERDE | Federal | DK PA - NMNM78413C |
| SAN JUAN 28-7 UNIT | 257F | 3003927291 | Gas | PROD | MESAVERDE | Federal | MV PA - NMNM78413A |
| SAN JUAN 28-7 UNIT | 257F | 3003927291 | Gas | PROD | DAKOTA | Federal | DK PA - NMNM78413C |
| SAN JUAN 28-7 UNIT | 257M | 3003922623 | Gas | PROD | MESAVERDE | Federal | MV PA - NMNM78413A |
| SAN JUAN 28-7 UNIT | 257M | 3003922623 | Gas | PROD | DAKOTA | Federal | DK PA - NMNM78413C |
| SAN JUAN 28-7 UNIT | 257N | 3003930687 | Gas | PROD | DAKOTA | Federal | DK PA - NMNM78413C |
| SAN JUAN 28-7 UNIT | 257N | 3003930687 | Gas | PROD | MESAVERDE | Federal | MV PA - NMNM78413A |
| SAN JUAN 28-7 UNIT | 258 | 3003921735 | Gas | PROD | DAKOTA | Federal | DK PA - NMNM78413C |

| Well Name | Well No. | API | State Well Classification | Well Status | Reservoir | OCD Lease Type | Reporting Serial |
|--------------------|----------|------------|---------------------------|-------------|-----------|----------------|--------------------|
| SAN JUAN 28-7 UNIT | 258 | 3003921735 | Gas | PROD | MESAVERDE | Federal | MV PA - NMNM78413A |
| SAN JUAN 28-7 UNIT | 258F | 3003927260 | Gas | PROD | DAKOTA | Federal | DK PA - NMNM78413C |
| SAN JUAN 28-7 UNIT | 258F | 3003927260 | Gas | PROD | MESAVERDE | Federal | MV PA - NMNM78413A |
| SAN JUAN 28-7 UNIT | 258G | 3003927249 | Gas | PROD | DAKOTA | Federal | DK PA - NMNM78413C |
| SAN JUAN 28-7 UNIT | 258G | 3003927249 | Gas | PROD | MESAVERDE | Federal | MV PA - NMNM78413A |
| SAN JUAN 28-7 UNIT | 258M | 3003925557 | Gas | PROD | MESAVERDE | Federal | MV PA - NMNM78413A |
| SAN JUAN 28-7 UNIT | 258M | 3003925557 | Gas | PROD | DAKOTA | Federal | DK PA - NMNM78413C |
| SAN JUAN 28-7 UNIT | 259 | 3003921690 | Gas | PROD | MESAVERDE | Federal | DK PA - NMNM78413C |
| SAN JUAN 28-7 UNIT | 259 | 3003921690 | Gas | PROD | DAKOTA | Federal | DK PA - NMNM78413C |
| SAN JUAN 28-7 UNIT | 259F | 3003927044 | Gas | PROD | DAKOTA | Federal | DK PA - NMNM78413C |
| SAN JUAN 28-7 UNIT | 259F | 3003927044 | Gas | PROD | MESAVERDE | Federal | MV PA - NMNM78413A |
| SAN JUAN 28-7 UNIT | 259G | 3003927290 | Gas | PROD | DAKOTA | Federal | DK PA - NMNM78413C |
| SAN JUAN 28-7 UNIT | 259G | 3003927290 | Gas | PROD | MESAVERDE | Federal | MV PA - NMNM78413A |
| SAN JUAN 28-7 UNIT | 259M | 3003925558 | Gas | PROD | DAKOTA | Federal | DK PA - NMNM78413C |
| SAN JUAN 28-7 UNIT | 259M | 3003925558 | Gas | PROD | MESAVERDE | Federal | MV PA - NMNM78413A |
| SAN JUAN 28-7 UNIT | 26 | 3003907351 | Gas | PROD | MESAVERDE | Federal | MV PA - NMNM78413A |
| SAN JUAN 28-7 UNIT | 260 | 3003921678 | Gas | PROD | DAKOTA | Federal | DK PA - NMNM78413C |
| SAN JUAN 28-7 UNIT | 260 | 3003921678 | Gas | PROD | MESAVERDE | Federal | MV PA - NMNM78413A |
| SAN JUAN 28-7 UNIT | 260F | 3003927054 | Gas | PROD | DAKOTA | Federal | DK PA - NMNM78413C |
| SAN JUAN 28-7 UNIT | 260F | 3003927054 | Gas | PROD | MESAVERDE | Federal | MV PA - NMNM78413A |
| SAN JUAN 28-7 UNIT | 260M | 3003926563 | Gas | PROD | DAKOTA | Federal | DK PA - NMNM78413C |
| SAN JUAN 28-7 UNIT | 260M | 3003926563 | Gas | PROD | MESAVERDE | Federal | MV PA - NMNM78413A |
| SAN JUAN 28-7 UNIT | 260N | 3003930680 | Gas | PROD | MESAVERDE | Federal | MV PA - NMNM78413A |
| SAN JUAN 28-7 UNIT | 260N | 3003930680 | Gas | PROD | DAKOTA | Federal | DK PA - NMNM78413C |
| SAN JUAN 28-7 UNIT | 261 | 3003921679 | Gas | PROD | DAKOTA | Federal | DK PA - NMNM78413C |
| SAN JUAN 28-7 UNIT | 261 | 3003921679 | Gas | PROD | MESAVERDE | Federal | MV PA - NMNM78413A |
| SAN JUAN 28-7 UNIT | 261F | 3003926987 | Gas | PROD | DAKOTA | Federal | DK PA - NMNM78413C |
| SAN JUAN 28-7 UNIT | 261F | 3003926987 | Gas | PROD | MESAVERDE | Federal | MV PA - NMNM78413A |

| Well Name | Well No. | API | State Well Classification | Well Status | Reservoir | OCD Lease Type | Reporting Serial |
|--------------------|----------|------------|---------------------------|-------------|-----------------|----------------|---------------------------|
| SAN JUAN 28-7 UNIT | 261G | 3003927061 | Gas | PROD | MESAVERDE | Federal | MV PA - NMNM78413A |
| SAN JUAN 28-7 UNIT | 261G | 3003927061 | Gas | PROD | DAKOTA | Federal | DK PA - NMNM78413C |
| SAN JUAN 28-7 UNIT | 261M | 3003926540 | Gas | PROD | MESAVERDE | Federal | MV PA - NMNM78413A |
| SAN JUAN 28-7 UNIT | 261M | 3003926540 | Gas | PROD | DAKOTA | Federal | DK PA - NMNM78413C |
| SAN JUAN 28-7 UNIT | 263 | 3003923981 | Gas | PROD | PICTURED CLIFFS | Federal | PC PA - NMNM78413B |
| SAN JUAN 28-7 UNIT | 264 | 3003924280 | Gas | PROD | PICTURED CLIFFS | Federal | PC PA - NMNM78413B |
| SAN JUAN 28-7 UNIT | 267 | 3003923341 | Gas | PROD | PICTURED CLIFFS | Federal | PC PA - NMNM78413B |
| SAN JUAN 28-7 UNIT | 268 | 3003923356 | Gas | PROD | CHACRA | Federal | CH PA - NMNM78413D |
| SAN JUAN 28-7 UNIT | 270 | 3003926446 | Gas | PROD | PICTURED CLIFFS | Federal | PC PA - NMNM78413B |
| SAN JUAN 28-7 UNIT | 271 | 3003926442 | Gas | PROD | PICTURED CLIFFS | State | PC PA - NMNM78413B |
| SAN JUAN 28-7 UNIT | 272 | 3003926445 | Gas | PROD | PICTURED CLIFFS | Federal | PC PA - NMNM78413B |
| SAN JUAN 28-7 UNIT | 273 | 3003926447 | Gas | PROD | PICTURED CLIFFS | Federal | PC PA - NMNM78413B |
| SAN JUAN 28-7 UNIT | 276 | 3003926437 | Gas | PROD | PICTURED CLIFFS | Federal | PC PA - NMNM78413B |
| SAN JUAN 28-7 UNIT | 277 | 3003926438 | Gas | PROD | PICTURED CLIFFS | Federal | PC PA - NMNM78413B |
| SAN JUAN 28-7 UNIT | 278 | 3003926439 | Gas | PROD | PICTURED CLIFFS | Federal | PC PA - NMNM78413B |
| SAN JUAN 28-7 UNIT | 279 | 3003926449 | Gas | PROD | PICTURED CLIFFS | Federal | PC PA - NMNM78413B |
| SAN JUAN 28-7 UNIT | 28 | 3003907326 | Gas | PROD | PICTURED CLIFFS | Federal | PC PA - NMNM78413B |
| SAN JUAN 28-7 UNIT | 28 | 3003907326 | Gas | PROD | FRUITLAND COAL | Federal | Lease Basis - NMNM108249 |
| SAN JUAN 28-7 UNIT | 280 | 3003926175 | Gas | PROD | MESAVERDE | Federal | MV PA - NMNM78413A |
| SAN JUAN 28-7 UNIT | 281 | 3003926545 | Gas | PROD | PICTURED CLIFFS | Federal | PC PA - NMNM78413B |
| SAN JUAN 28-7 UNIT | 283 | 3003926543 | Gas | PROD | PICTURED CLIFFS | Federal | PC PA - NMNM78413B |
| SAN JUAN 28-7 UNIT | 284 | 3003926710 | Gas | PROD | PICTURED CLIFFS | Federal | PC PA - NMNM78413B |
| SAN JUAN 28-7 UNIT | 284 | 3003926710 | Gas | PROD | FRUITLAND COAL | Federal | Lease Basis - NMSF079321A |
| SAN JUAN 28-7 UNIT | 29 | 3003907459 | Gas | PROD | FRUITLAND COAL | Federal | Lease Basis - NMNM108248 |
| SAN JUAN 28-7 UNIT | 29 | 3003907459 | Gas | PROD | MESAVERDE | Federal | MV PA - NMNM78413A |
| SAN JUAN 28-7 UNIT | 29 | 3003907459 | Gas | PROD | PICTURED CLIFFS | Federal | PC PA - NMNM78413B |
| SAN JUAN 28-7 UNIT | 293 | 3003926758 | Gas | PROD | FRUITLAND COAL | Federal | Lease Basis - NMSF078498 |
| SAN JUAN 28-7 UNIT | 293 | 3003926758 | Gas | PROD | PICTURED CLIFFS | Federal | Lease Basis - NMSF078498 |

| Well Name | Well No. | API | State Well Classification | Well Status | Reservoir | OCD Lease Type | Reporting Serial |
|------------------------|----------|------------|---------------------------|-------------|-----------------|----------------|----------------------------|
| SAN JUAN 28-7 UNIT COM | 298 | 3003931093 | Gas | PROD | MESAVERDE | Federal | MV PA - NMNM78413A |
| SAN JUAN 28-7 UNIT COM | 298 | 3003931093 | Gas | PROD | DAKOTA | Federal | Lease Basis - NMNM75815 |
| SAN JUAN 28-7 UNIT | 29A | 3003921944 | Gas | PROD | MESAVERDE | Federal | MV PA - NMNM78413A |
| SAN JUAN 28-7 UNIT | 30 | 3003907411 | Gas | PROD | DAKOTA | Federal | DK PA - NMNM78413C |
| SAN JUAN 28-7 UNIT | 30A | 3003922281 | Gas | PROD | PICTURED CLIFFS | Federal | PC PA - NMNM78413B |
| SAN JUAN 28-7 UNIT | 30A | 3003922281 | Gas | PROD | MESAVERDE | Federal | MV PA - NMNM78413A |
| SAN JUAN 28-7 UNIT | 31 | 3003907344 | Gas | PROD | FRUITLAND COAL | Federal | FC PA - FC PA - NMNM78413E |
| SAN JUAN 28-7 UNIT | 31 | 3003907344 | Gas | PROD | PICTURED CLIFFS | Federal | PC PA - NMNM78413B |
| SAN JUAN 28-7 UNIT | 31A | 3003925341 | Gas | PROD | MESAVERDE | Federal | MV PA - NMNM78413A |
| SAN JUAN 28-7 UNIT | 32 | 3003907367 | Gas | PROD | FRUITLAND COAL | Federal | Lease Basis - NMNM108247 |
| SAN JUAN 28-7 UNIT | 32 | 3003907367 | Gas | PROD | MESAVERDE | Federal | MV PA - NMNM78413A |
| SAN JUAN 28-7 UNIT | 32 | 3003907367 | Gas | PROD | PICTURED CLIFFS | Federal | PC PA - NMNM78413B |
| SAN JUAN 28-7 UNIT | 32A | 3003922240 | Gas | PROD | PICTURED CLIFFS | Federal | PC PA - NMNM78413B |
| SAN JUAN 28-7 UNIT | 32A | 3003922240 | Gas | PROD | MESAVERDE | Federal | MV PA - NMNM78413A |
| SAN JUAN 28-7 UNIT | 33 | 3003907438 | Gas | PROD | MESAVERDE | Federal | MV PA - NMNM78413A |
| SAN JUAN 28-7 UNIT | 33A | 3003922238 | Gas | PROD | MESAVERDE | Federal | MV PA - NMNM78413A |
| SAN JUAN 28-7 UNIT | 33A | 3003922238 | Gas | PROD | PICTURED CLIFFS | Federal | PC PA - NMNM78413B |
| SAN JUAN 28-7 UNIT | 35 | 3003907178 | Gas | PROD | PICTURED CLIFFS | Federal | Lease Basis - NMSF079321A |
| SAN JUAN 28-7 UNIT | 35 | 3003907178 | Gas | PROD | FRUITLAND COAL | Federal | Lease Basis - NMSF079321A |
| SAN JUAN 28-7 UNIT | 35A | 3003923984 | Gas | PROD | MESAVERDE | Federal | MV PA - NMNM78413A |
| SAN JUAN 28-7 UNIT | 36 | 3003907226 | Gas | PROD | PICTURED CLIFFS | Federal | PC PA - NMNM78413B |
| SAN JUAN 28-7 UNIT | 38 | 3003907144 | Gas | PROD | PICTURED CLIFFS | Federal | PC PA - NMNM78413B |
| SAN JUAN 28-7 UNIT | 4 | 3003907143 | Gas | PROD | PICTURED CLIFFS | Federal | PC PA - NMNM78413B |
| SAN JUAN 28-7 UNIT | 402 | 3003925111 | Gas | PROD | FRUITLAND COAL | Federal | Lease Basis - NMSF079290 |
| SAN JUAN 28-7 UNIT | 403 | 3003925112 | Gas | PROD | FRUITLAND COAL | Federal | FC PA - FC PA - NMNM78413E |

| Well Name | Well No. | API | State Well Classification | Well Status | Reservoir | OCD Lease Type | Reporting Serial |
|--------------------|----------|------------|---------------------------|-------------|-----------------|----------------|----------------------------|
| SAN JUAN 28-7 UNIT | 404 | 3003925113 | Gas | PROD | FRUITLAND COAL | Federal | FC PA - FC PA - NMNM78413E |
| SAN JUAN 28-7 UNIT | 407 | 3003925114 | Gas | PROD | FRUITLAND COAL | Federal | FC PA - FC PA - NMNM78413E |
| SAN JUAN 28-7 UNIT | 408 | 3003925115 | Gas | PROD | FRUITLAND COAL | Federal | FC PA - FC PA - NMNM78413E |
| SAN JUAN 28-7 UNIT | 409 | 3003925126 | Gas | PROD | FRUITLAND COAL | Federal | FC PA - FC PA - NMNM78413E |
| SAN JUAN 28-7 UNIT | 413 | 3003925047 | Gas | PROD | FRUITLAND COAL | Federal | Lease Basis - NMSF079290A |
| SAN JUAN 28-7 UNIT | 414 | 3003925356 | Gas | PROD | FRUITLAND COAL | Federal | FC PA - FC PA - NMNM78413E |
| SAN JUAN 28-7 UNIT | 417 | 3003925172 | Gas | PROD | FRUITLAND COAL | Federal | FC PA - FC PA - NMNM78413E |
| SAN JUAN 28-7 UNIT | 420 | 3003925119 | Gas | PROD | FRUITLAND COAL | Federal | FC PA - FC PA - NMNM78413E |
| SAN JUAN 28-7 UNIT | 427 | 3003925391 | Gas | PROD | FRUITLAND COAL | Federal | FC PA - FC PA - NMNM78413E |
| SAN JUAN 28-7 UNIT | 428 | 3003925392 | Gas | PROD | FRUITLAND COAL | Federal | FC PA - FC PA - NMNM78413E |
| SAN JUAN 28-7 UNIT | 44 | 3003907214 | Gas | PROD | MESAVERDE | State | MV PA - NMNM78413A |
| SAN JUAN 28-7 UNIT | 44A | 3003922063 | Gas | PROD | MESAVERDE | State | MV PA - NMNM78413A |
| SAN JUAN 28-7 UNIT | 45 | 3003907304 | Gas | PROD | MESAVERDE | Federal | MV PA - NMNM78413A |
| SAN JUAN 28-7 UNIT | 46 | 3003907424 | Gas | PROD | MESAVERDE | Federal | MV PA - NMNM78413A |
| SAN JUAN 28-7 UNIT | 47 | 3003907389 | Gas | PROD | PICTURED CLIFFS | Federal | PC PA - NMNM78413B |
| SAN JUAN 28-7 UNIT | 47 | 3003907389 | Gas | PROD | MESAVERDE | Federal | MV PA - NMNM78413A |
| SAN JUAN 28-7 UNIT | 47 | 3003907389 | Gas | PROD | FRUITLAND COAL | Federal | Lease Basis - NMNM108246 |
| SAN JUAN 28-7 UNIT | 48 | 3003907362 | Gas | PROD | FRUITLAND COAL | Federal | Lease Basis - NMNM108245 |
| SAN JUAN 28-7 UNIT | 48 | 3003907362 | Gas | PROD | MESAVERDE | Federal | MV PA - NMNM78413A |
| SAN JUAN 28-7 UNIT | 48 | 3003907362 | Gas | PROD | PICTURED CLIFFS | Federal | PC PA - NMNM78413B |
| SAN JUAN 28-7 UNIT | 48A | 3003921947 | Gas | PROD | MESAVERDE | Federal | MV PA - NMNM78413A |
| SAN JUAN 28-7 UNIT | 49 | 3003907382 | Gas | PROD | MESAVERDE | Federal | MV PA - NMNM78413A |

| Well Name | Well No. | API | State Well Classification | Well Status | Reservoir | OCD Lease Type | Reporting Serial |
|--------------------|----------|------------|---------------------------|-------------|-----------------|----------------|---|
| SAN JUAN 28-7 UNIT | 49 | 3003907382 | Gas | PROD | PICTURED CLIFFS | Federal | Lease Basis - NMNM108189, Lease Basis - NMNM108244 |
| SAN JUAN 28-7 UNIT | 49 | 3003907382 | Gas | PROD | FRUITLAND COAL | Federal | Lease Basis - NMNM108189, Lease Basis - NMNM108244 |
| SAN JUAN 28-7 UNIT | 5 | 3003906963 | Gas | PROD | PICTURED CLIFFS | Federal | PC PA - NMNM78413B |
| SAN JUAN 28-7 UNIT | 50 | 3003907385 | Gas | PROD | MESAVERDE | Federal | MV PA - NMNM78413A |
| SAN JUAN 28-7 UNIT | 50A | 3003921948 | Gas | PROD | MESAVERDE | Federal | MV PA - NMNM78413A |
| SAN JUAN 28-7 UNIT | 51 | 3003907383 | Gas | PROD | MESAVERDE | Federal | MV PA - NMNM78413A |
| SAN JUAN 28-7 UNIT | 51A | 3003922190 | Gas | PROD | PICTURED CLIFFS | Federal | PC PA - NMNM78413B |
| SAN JUAN 28-7 UNIT | 51A | 3003922190 | Gas | PROD | MESAVERDE | Federal | MV PA - NMNM78413A |
| SAN JUAN 28-7 UNIT | 52 | 3003907315 | Gas | PROD | MESAVERDE | Federal | MV PA - NMNM78413A |
| SAN JUAN 28-7 UNIT | 52 | 3003907315 | Gas | PROD | PICTURED CLIFFS | Federal | PC PA - NMNM78413B |
| SAN JUAN 28-7 UNIT | 52A | 3003923982 | Gas | PROD | FRUITLAND COAL | Federal | FC PA - NMNM78413E |
| SAN JUAN 28-7 UNIT | 52A | 3003923982 | Gas | PROD | MESAVERDE | Federal | MV PA - NMNM78413A |
| SAN JUAN 28-7 UNIT | 52A | 3003923982 | Gas | PROD | PICTURED CLIFFS | Federal | PC PA - NMNM78413B |
| SAN JUAN 28-7 UNIT | 53 | 3003907300 | Gas | PROD | MESAVERDE | Federal | MV PA - NMNM78413A |
| SAN JUAN 28-7 UNIT | 53 | 3003907300 | Gas | PROD | FRUITLAND COAL | Federal | Lease Basis - NMSF078498 |
| SAN JUAN 28-7 UNIT | 53 | 3003907300 | Gas | PROD | PICTURED CLIFFS | Federal | PC PA - NMNM78413B |
| SAN JUAN 28-7 UNIT | 54 | 3003907347 | Gas | PROD | MESAVERDE | Federal | MV PA - NMNM78413A |
| SAN JUAN 28-7 UNIT | 55 | 3003907444 | Gas | PROD | FRUITLAND COAL | Federal | Lease Basis - NMSF079289 |
| SAN JUAN 28-7 UNIT | 55 | 3003907444 | Gas | PROD | MESAVERDE | Federal | MV PA - NMNM78413A |
| SAN JUAN 28-7 UNIT | 55 | 3003907444 | Gas | PROD | PICTURED CLIFFS | Federal | Lease Basis - NMSF079289 |
| SAN JUAN 28-7 UNIT | 55A | 3003921912 | Gas | PROD | MESAVERDE | Federal | MV PA - NMNM78413A |
| SAN JUAN 28-7 UNIT | 55B | 3003929415 | Gas | PROD | MESAVERDE | Federal | MV PA - NMNM78413A |
| SAN JUAN 28-7 UNIT | 56 | 3003907401 | Gas | PROD | MESAVERDE | Federal | MV PA - NMNM78413A |
| SAN JUAN 28-7 UNIT | 56A | 3003921913 | Gas | PROD | MESAVERDE | Federal | MV PA - NMNM78413A |
| SAN JUAN 28-7 UNIT | 57 | 3003907314 | Gas | PROD | MESAVERDE | Federal | MV PA - NMNM78413A |
| SAN JUAN 28-7 UNIT | 57 | 3003907314 | Gas | PROD | PICTURED CLIFFS | Federal | PC PA - NMNM78413B |

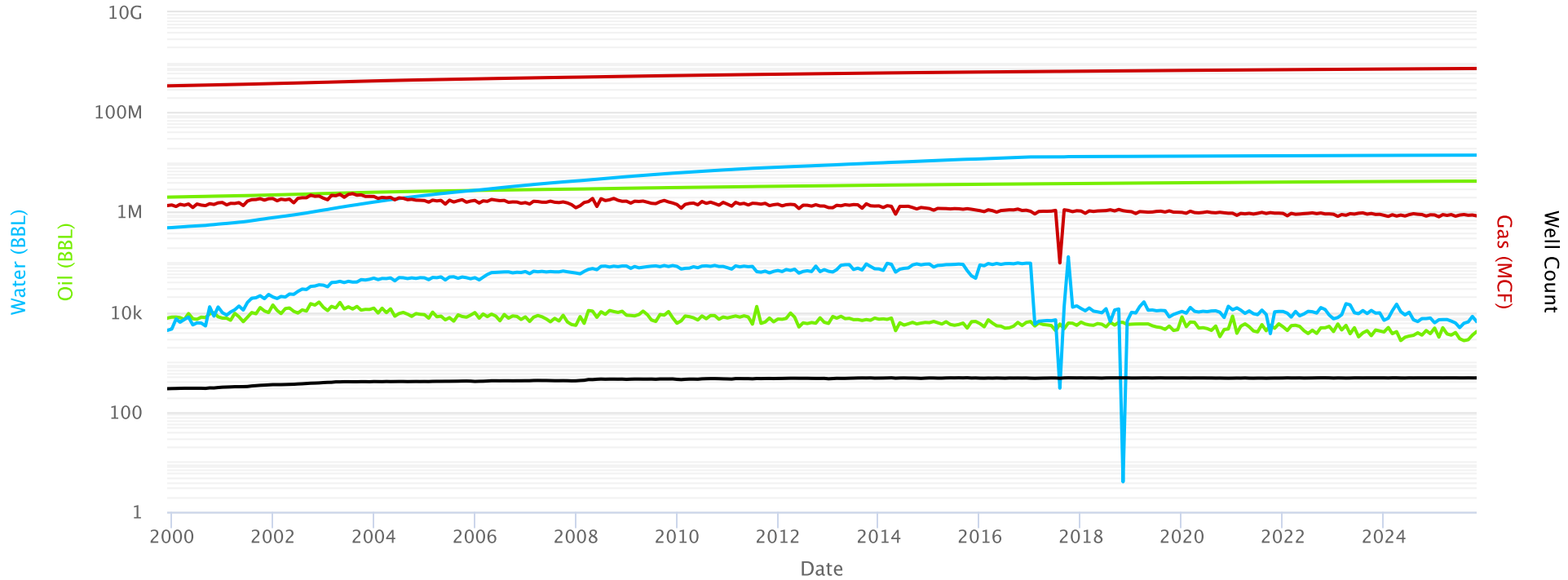
| Well Name | Well No. | API | State Well Classification | Well Status | Reservoir | OCD Lease Type | Reporting Serial |
|--------------------|----------|------------|---------------------------|-------------|-----------------|----------------|---------------------------|
| SAN JUAN 28-7 UNIT | 58 | 3003907301 | Gas | PROD | PICTURED CLIFFS | Federal | PC PA - NMNM78413B |
| SAN JUAN 28-7 UNIT | 58 | 3003907301 | Gas | PROD | MESAVERDE | Federal | MV PA - NMNM78413A |
| SAN JUAN 28-7 UNIT | 58A | 3003923983 | Gas | PROD | PICTURED CLIFFS | Federal | PC PA - NMNM78413B |
| SAN JUAN 28-7 UNIT | 58A | 3003923983 | Gas | PROD | MESAVERDE | Federal | MV PA - NMNM78413A |
| SAN JUAN 28-7 UNIT | 58A | 3003923983 | Gas | PROD | CHACRA | Federal | Lease Basis - NMSF078497 |
| SAN JUAN 28-7 UNIT | 59 | 3003907334 | Gas | PROD | PICTURED CLIFFS | Federal | PC PA - NMNM78413B |
| SAN JUAN 28-7 UNIT | 59 | 3003907334 | Gas | PROD | MESAVERDE | Federal | MV PA - NMNM78413A |
| SAN JUAN 28-7 UNIT | 59 | 3003907334 | Gas | PROD | FRUITLAND COAL | Federal | Lease Basis - NMSF078498 |
| SAN JUAN 28-7 UNIT | 59A | 3003925666 | Gas | PROD | MESAVERDE | Federal | MV PA - NMNM78413A |
| SAN JUAN 28-7 UNIT | 59A | 3003925666 | Gas | PROD | PICTURED CLIFFS | Federal | PC PA - NMNM78413B |
| SAN JUAN 28-7 UNIT | 59A | 3003925666 | Gas | PROD | FRUITLAND COAL | Federal | Lease Basis - NMSF078498 |
| SAN JUAN 28-7 UNIT | 6 | 3003907398 | Gas | PROD | PICTURED CLIFFS | Federal | PC PA - NMNM78413B |
| SAN JUAN 28-7 UNIT | 6 | 3003907398 | Gas | PROD | MESAVERDE | Federal | MV PA - NMNM78413A |
| SAN JUAN 28-7 UNIT | 6 | 3003907398 | Gas | PROD | FRUITLAND COAL | Federal | Lease Basis - NMNM108252 |
| SAN JUAN 28-7 UNIT | 60 | 3003907391 | Gas | PROD | MESAVERDE | Federal | MV PA - NMNM78413A |
| SAN JUAN 28-7 UNIT | 61 | 3003907460 | Gas | PROD | MESAVERDE | Federal | MV PA - NMNM78413A |
| SAN JUAN 28-7 UNIT | 61A | 3003922208 | Gas | PROD | MESAVERDE | Federal | MV PA - NMNM78413A |
| SAN JUAN 28-7 UNIT | 61A | 3003922208 | Gas | PROD | PICTURED CLIFFS | Federal | PC PA - NMNM78413B |
| SAN JUAN 28-7 UNIT | 61B | 3003927250 | Gas | PROD | MESAVERDE | Federal | DK PA - NMNM78413C |
| SAN JUAN 28-7 UNIT | 62 | 3003907133 | Gas | PROD | PICTURED CLIFFS | Federal | PC PA - NMNM78413B |
| SAN JUAN 28-7 UNIT | 62 | 3003907133 | Gas | PROD | FRUITLAND COAL | Federal | Lease Basis - NMSF079298B |
| SAN JUAN 28-7 UNIT | 62 | 3003907133 | Gas | PROD | MESAVERDE | Federal | MV PA - NMNM78413A |
| SAN JUAN 28-7 UNIT | 63 | 3003907123 | Gas | PROD | FRUITLAND COAL | Federal | Lease Basis - NMSF079298B |
| SAN JUAN 28-7 UNIT | 68 | 3003960071 | Gas | PROD | PICTURED CLIFFS | Federal | Lease Basis - NMSF078500A |
| SAN JUAN 28-7 UNIT | 68 | 3003960071 | Gas | PROD | FRUITLAND COAL | Federal | Lease Basis - NMSF078500A |
| SAN JUAN 28-7 UNIT | 69 | 3003907258 | Gas | PROD | MESAVERDE | Federal | MV PA - NMNM78413A |
| SAN JUAN 28-7 UNIT | 69 | 3003907258 | Gas | PROD | PICTURED CLIFFS | Federal | PC PA - NMNM78413B |
| SAN JUAN 28-7 UNIT | 69 | 3003907258 | Gas | PROD | FRUITLAND COAL | Federal | Lease Basis - NMSF078498 |

| Well Name | Well No. | API | State Well Classification | Well Status | Reservoir | OCD Lease Type | Reporting Serial |
|--------------------|----------|------------|---------------------------|-------------|-----------------|----------------|---------------------------|
| SAN JUAN 28-7 UNIT | 7 | 3003907265 | Gas | PROD | PICTURED CLIFFS | Federal | PC PA - NMNM78413B |
| SAN JUAN 28-7 UNIT | 7 | 3003907265 | Gas | PROD | FRUITLAND COAL | Federal | Lease Basis - NMSF078496 |
| SAN JUAN 28-7 UNIT | 70 | 3003907221 | Gas | PROD | MESAVERDE | Federal | MV PA - NMNM78413A |
| SAN JUAN 28-7 UNIT | 71 | 3003907244 | Gas | PROD | MESAVERDE | Federal | MV PA - NMNM78413A |
| SAN JUAN 28-7 UNIT | 71 | 3003907244 | Gas | PROD | PICTURED CLIFFS | Federal | PC PA - NMNM78413B |
| SAN JUAN 28-7 UNIT | 72 | 3003907238 | Gas | PROD | MESAVERDE | Federal | MV PA - NMNM78413A |
| SAN JUAN 28-7 UNIT | 72 | 3003907238 | Gas | PROD | PICTURED CLIFFS | Federal | PC PA - NMNM78413B |
| SAN JUAN 28-7 UNIT | 72A | 3003921949 | Gas | PROD | MESAVERDE | Federal | MV PA - NMNM78413A |
| SAN JUAN 28-7 UNIT | 73 | 3003907332 | Gas | PROD | PICTURED CLIFFS | Federal | PC PA - NMNM78413B |
| SAN JUAN 28-7 UNIT | 73 | 3003907332 | Gas | PROD | MESAVERDE | Federal | MV PA - NMNM78413A |
| SAN JUAN 28-7 UNIT | 74 | 3003907448 | Gas | PROD | MESAVERDE | Federal | MV PA - NMNM78413A |
| SAN JUAN 28-7 UNIT | 74A | 3003922237 | Gas | PROD | MESAVERDE | Federal | MV PA - NMNM78413A |
| SAN JUAN 28-7 UNIT | 74A | 3003922237 | Gas | PROD | PICTURED CLIFFS | Federal | PC PA - NMNM78413B |
| SAN JUAN 28-7 UNIT | 75 | 3003907412 | Gas | PROD | PICTURED CLIFFS | Federal | PC PA - NMNM78413B |
| SAN JUAN 28-7 UNIT | 76 | 3003907384 | Gas | PROD | PICTURED CLIFFS | Federal | PC PA - NMNM78413B |
| SAN JUAN 28-7 UNIT | 76 | 3003907384 | Gas | PROD | MESAVERDE | Federal | MV PA - NMNM78413A |
| SAN JUAN 28-7 UNIT | 77 | 3003907219 | Gas | PROD | PICTURED CLIFFS | Federal | Lease Basis - NMSF078498A |
| SAN JUAN 28-7 UNIT | 77 | 3003907219 | Gas | PROD | FRUITLAND COAL | Federal | Lease Basis - NMSF078498A |
| SAN JUAN 28-7 UNIT | 78 | 3003907017 | Gas | PROD | MESAVERDE | Federal | MV PA - NMNM78413A |
| SAN JUAN 28-7 UNIT | 79 | 3003907135 | Gas | PROD | PICTURED CLIFFS | Federal | PC PA - NMNM78413B |
| SAN JUAN 28-7 UNIT | 79 | 3003907135 | Gas | PROD | MESAVERDE | Federal | MV PA - NMNM78413A |
| SAN JUAN 28-7 UNIT | 8 | 3003907431 | Gas | PROD | MESAVERDE | Federal | MV PA - NMNM78413A |
| SAN JUAN 28-7 UNIT | 80 | 3003907069 | Gas | PROD | PICTURED CLIFFS | State | PC PA - NMNM78413B |
| SAN JUAN 28-7 UNIT | 81 | 3003907132 | Gas | PROD | PICTURED CLIFFS | Federal | PC PA - NMNM78413B |
| SAN JUAN 28-7 UNIT | 82 | 3003907201 | Gas | PROD | PICTURED CLIFFS | Federal | PC PA - NMNM78413B |
| SAN JUAN 28-7 UNIT | 84 | 3003907195 | Gas | PROD | FRUITLAND COAL | Federal | Lease Basis - NMNM108243 |
| SAN JUAN 28-7 UNIT | 84 | 3003907195 | Gas | PROD | PICTURED CLIFFS | Federal | PC PA - NMNM78413B |
| SAN JUAN 28-7 UNIT | 85 | 3003907212 | Gas | PROD | MESAVERDE | Federal | MV PA - NMNM78413A |

| Well Name | Well No. | API | State Well Classification | Well Status | Reservoir | OCD Lease Type | Reporting Serial |
|--------------------------|----------|------------|---------------------------|-------------|-----------------|----------------|--------------------|
| SAN JUAN 28-7 UNIT | 86 | 3003907124 | Gas | PROD | MESAVERDE | Federal | MV PA - NMNM78413A |
| SAN JUAN 28-7 UNIT | 86 | 3003907124 | Gas | PROD | PICTURED CLIFFS | Federal | PC PA - NMNM78413B |
| SAN JUAN 28-7 UNIT | 88 | 3003907147 | Gas | PROD | MESAVERDE | Federal | MV PA - NMNM78413A |
| SAN JUAN 28-7 UNIT | 88 | 3003907147 | Gas | PROD | PICTURED CLIFFS | Federal | PC PA - NMNM78413B |
| SAN JUAN 28-7 UNIT | 89 | 3003907040 | Gas | PROD | MESAVERDE | Federal | MV PA - NMNM78413A |
| SAN JUAN 28-7 UNIT | 89 | 3003907040 | Gas | PROD | PICTURED CLIFFS | Federal | PC PA - NMNM78413B |
| SAN JUAN 28-7 UNIT | 8A | 3003922209 | Gas | PROD | PICTURED CLIFFS | Federal | PC PA - NMNM78413B |
| SAN JUAN 28-7 UNIT | 8A | 3003922209 | Gas | PROD | MESAVERDE | Federal | MV PA - NMNM78413A |
| SAN JUAN 28-7 UNIT | 9 | 3003907399 | Gas | PROD | MESAVERDE | Federal | MV PA - NMNM78413A |
| SAN JUAN 28-7 UNIT | 91 | 3003907270 | Gas | PROD | PICTURED CLIFFS | Federal | PC PA - NMNM78413B |
| SAN JUAN 28-7 UNIT | 91 | 3003907270 | Gas | PROD | MESAVERDE | Federal | MV PA - NMNM78413A |
| SAN JUAN 28-7 UNIT | 92 | 3003906982 | Gas | PROD | PICTURED CLIFFS | Federal | PC PA - NMNM78413B |
| SAN JUAN 28-7 UNIT | 94 | 3003907282 | Gas | PROD | MESAVERDE | FEE | MV PA - NMNM78413A |
| SAN JUAN 28-7 UNIT | 94 | 3003907282 | Gas | PROD | PICTURED CLIFFS | FEE | PC PA - NMNM78413B |
| SAN JUAN 28-7 UNIT | 94A | 3003922348 | Gas | PROD | MESAVERDE | Federal | MV PA - NMNM78413A |
| SAN JUAN 28-7 UNIT | 94A | 3003922348 | Gas | PROD | PICTURED CLIFFS | Federal | PC PA - NMNM78413B |
| SAN JUAN 28-7 UNIT | 95 | 3003907159 | Gas | PROD | PICTURED CLIFFS | Federal | PC PA - NMNM78413B |
| SAN JUAN 28-7 UNIT | 96 | 3003907129 | Gas | PROD | PICTURED CLIFFS | Federal | PC PA - NMNM78413B |
| SAN JUAN 28-7 UNIT | 96 | 3003907129 | Gas | PROD | MESAVERDE | Federal | MV PA - NMNM78413A |
| SAN JUAN 28-7 UNIT NP | 97 | 3003907011 | Gas | PROD | PICTURED CLIFFS | Federal | PC PA - NMNM78413B |
| SAN JUAN 28-7 UNIT NP | 97 | 3003907011 | Gas | PROD | MESAVERDE | Federal | MV PA - NMNM78413A |
| SAN JUAN 28-7 UNIT | 98 | 3003906902 | Gas | PROD | DAKOTA | Federal | DK PA - NMNM78413C |
| SAN JUAN 28-7 UNIT | 98 | 3003906902 | Gas | PROD | MESAVERDE | Federal | MV PA - NMNM78413A |
| SAN JUAN 28-7 UNIT | 98M | 3003925980 | Gas | PROD | DAKOTA | Federal | DK PA - NMNM78413C |
| SAN JUAN 28-7 UNIT | 98M | 3003925980 | Gas | PROD | MESAVERDE | Federal | MV PA - NMNM78413A |
| SAN JUAN 28-7 UNIT | 98N | 3003930759 | Gas | PROD | MESAVERDE | Federal | MV PA - NMNM78413A |
| SAN JUAN 28-7 UNIT | 98N | 3003930759 | Gas | PROD | DAKOTA | Federal | DK PA - NMNM78413C |

| Well Name | Well No. | API | State Well Classification | Well Status | Reservoir | OCD Lease Type | Reporting Serial |
|--------------------|----------|------------|---------------------------|-------------|-----------------|----------------|--------------------|
| SAN JUAN 28-7 UNIT | 98P | 3003930773 | Gas | PROD | CHACRA | Federal | CH PA - NMNM78413D |
| SAN JUAN 28-7 UNIT | 98P | 3003930773 | Gas | PROD | DAKOTA | Federal | DK PA - NMNM78413C |
| SAN JUAN 28-7 UNIT | 98P | 3003930773 | Gas | PROD | MESAVERDE | Federal | MV PA - NMNM78413A |
| SAN JUAN 28-7 UNIT | 99 | 3003921729 | Gas | PROD | MESAVERDE | Federal | MV PA - NMNM78413A |
| SAN JUAN 28-7 UNIT | 99 | 3003921729 | Gas | PROD | DAKOTA | Federal | DK PA - NMNM78413C |
| SAN JUAN 28-7 UNIT | 99F | 3003926897 | Gas | PROD | MESAVERDE | Federal | MV PA - NMNM78413A |
| SAN JUAN 28-7 UNIT | 99F | 3003926897 | Gas | PROD | PICTURED CLIFFS | Federal | PC PA - NMNM78413B |
| SAN JUAN 28-7 UNIT | 99F | 3003926897 | Gas | PROD | DAKOTA | Federal | DK PA - NMNM78413C |
| SAN JUAN 28-7 UNIT | 99F | 3003926897 | Gas | PROD | CHACRA | Federal | CH PA - NMNM78413D |
| SAN JUAN 28-7 UNIT | 99M | 3003925847 | Gas | PROD | MESAVERDE | Federal | MV PA - NMNM78413A |
| SAN JUAN 28-7 UNIT | 99M | 3003925847 | Gas | PROD | DAKOTA | Federal | DK PA - NMNM78413C |

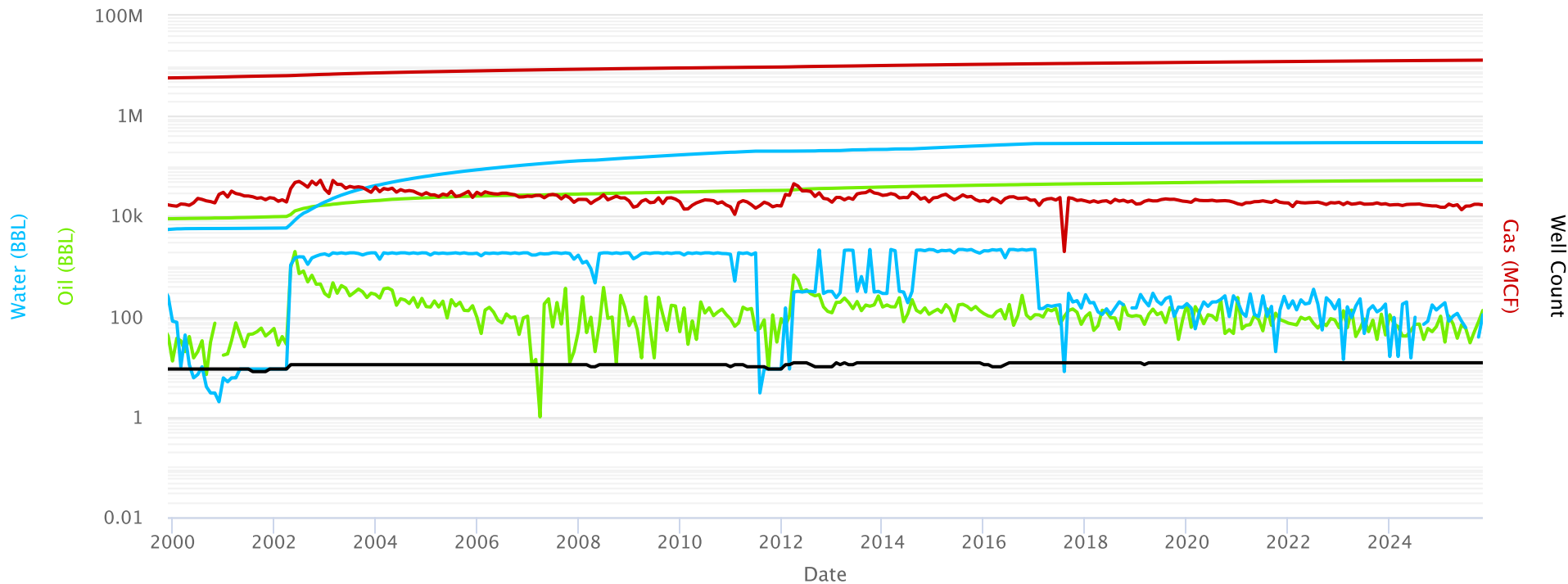
Monthly Production



San Juan 28-7 Unit NMNM 078413D CH

Chacra PA - 10th Revision

Monthly Production

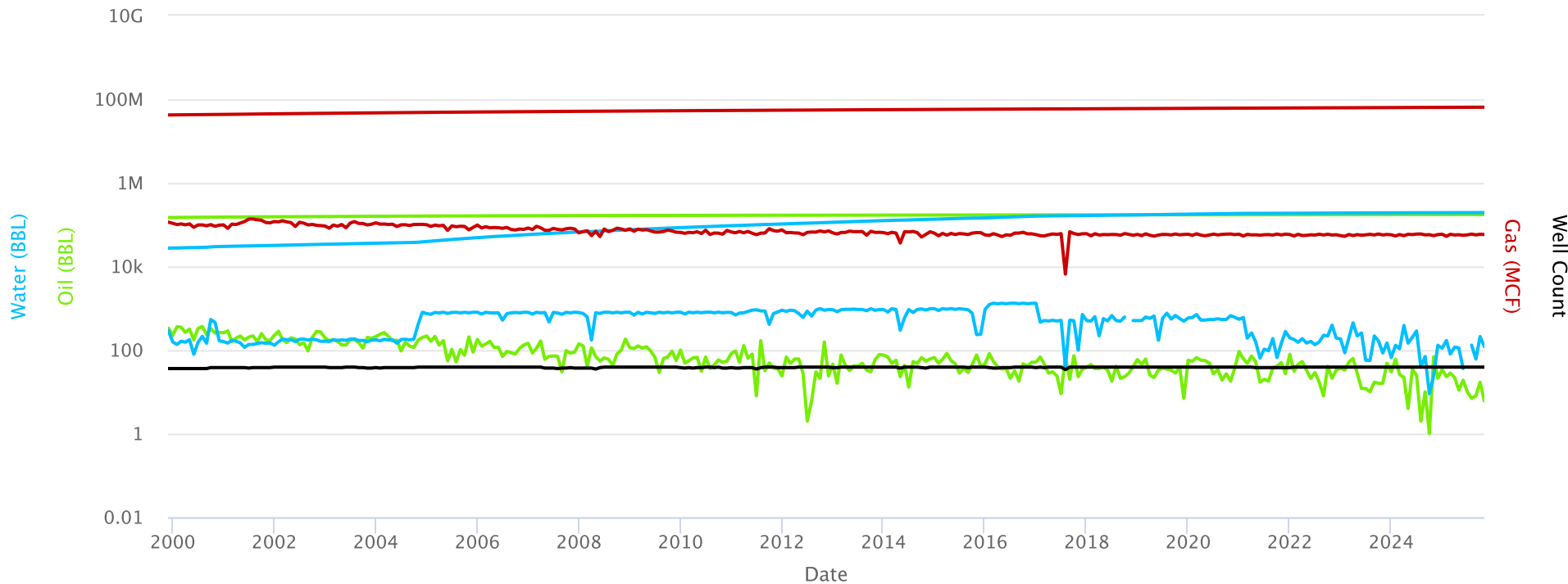


Cum Oil Cum Gas Cum Water Oil Gas Water Well Count

San Juan 28-7 Unit NMNM 078413E FRC

Fruitland Coal PA - 6th Revision

Monthly Production

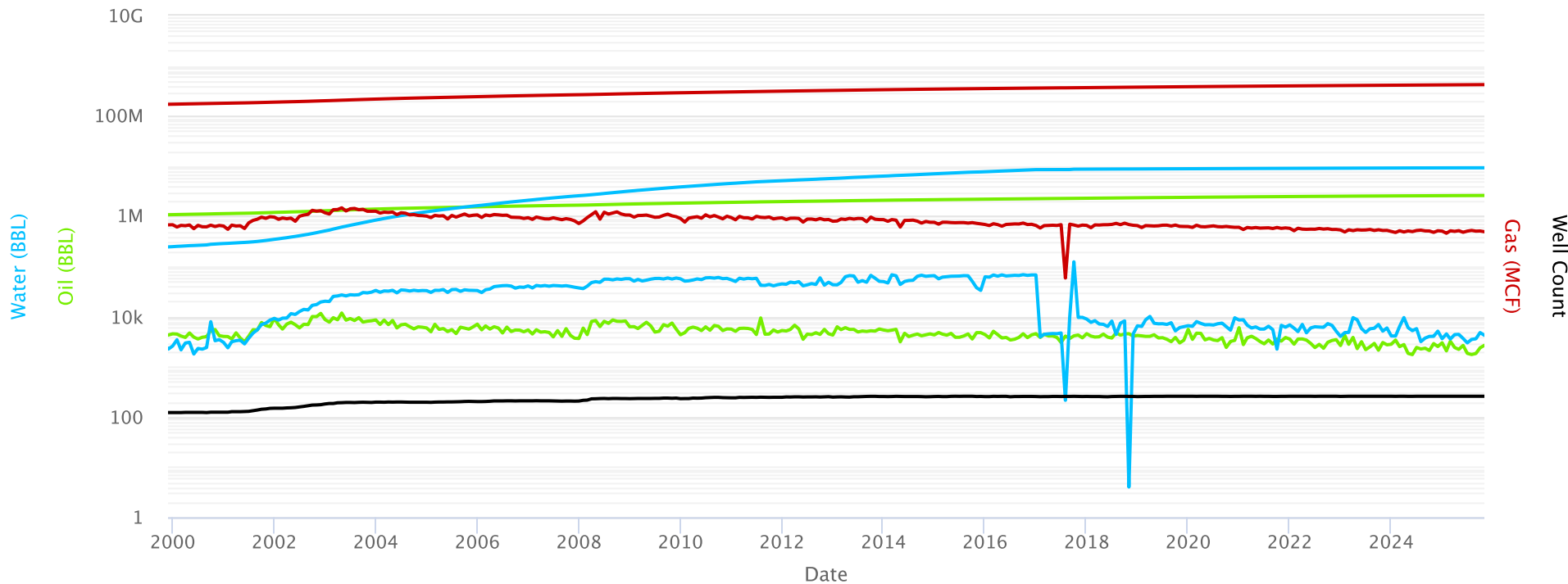


Cum Oil Cum Gas Cum Water Oil Gas Water Well Count

San Juan 28-7 Unit NMNM 078413A MV

Mesaverde PA - 48th Revision

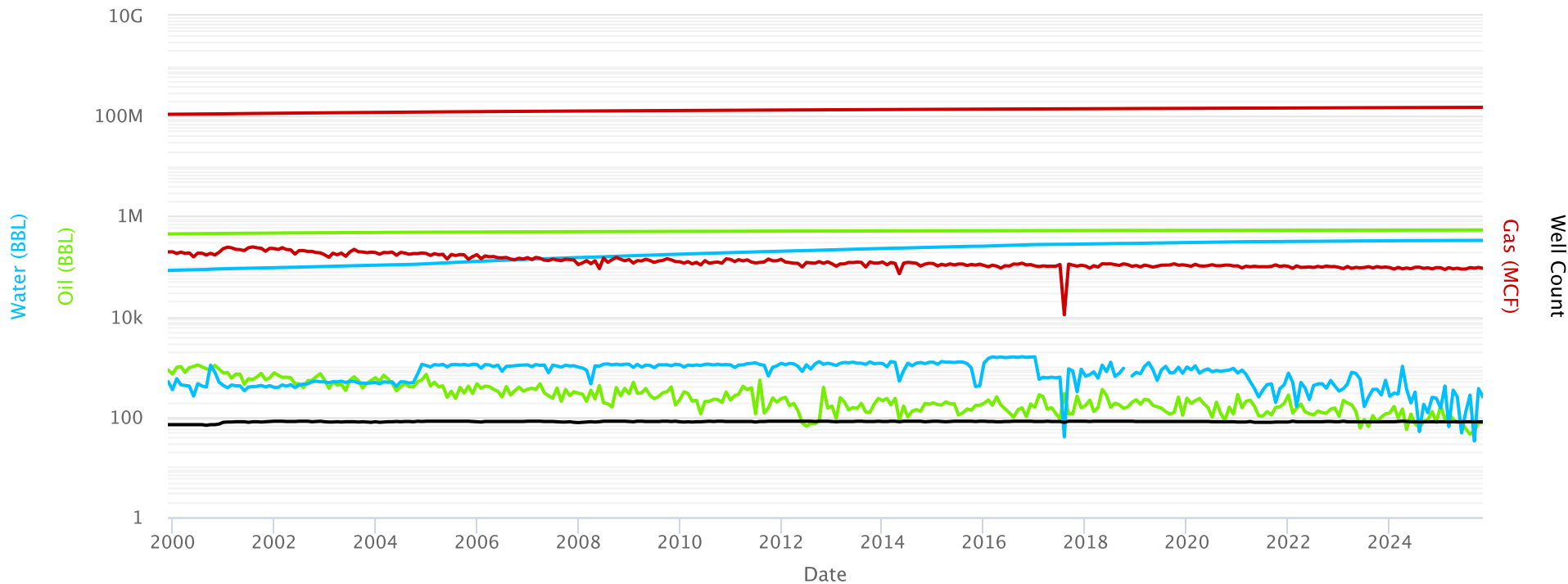
Monthly Production



San Juan 28-7 Unit NMNM 078413B PC

Pictured Cliffs PA - 42nd Revision

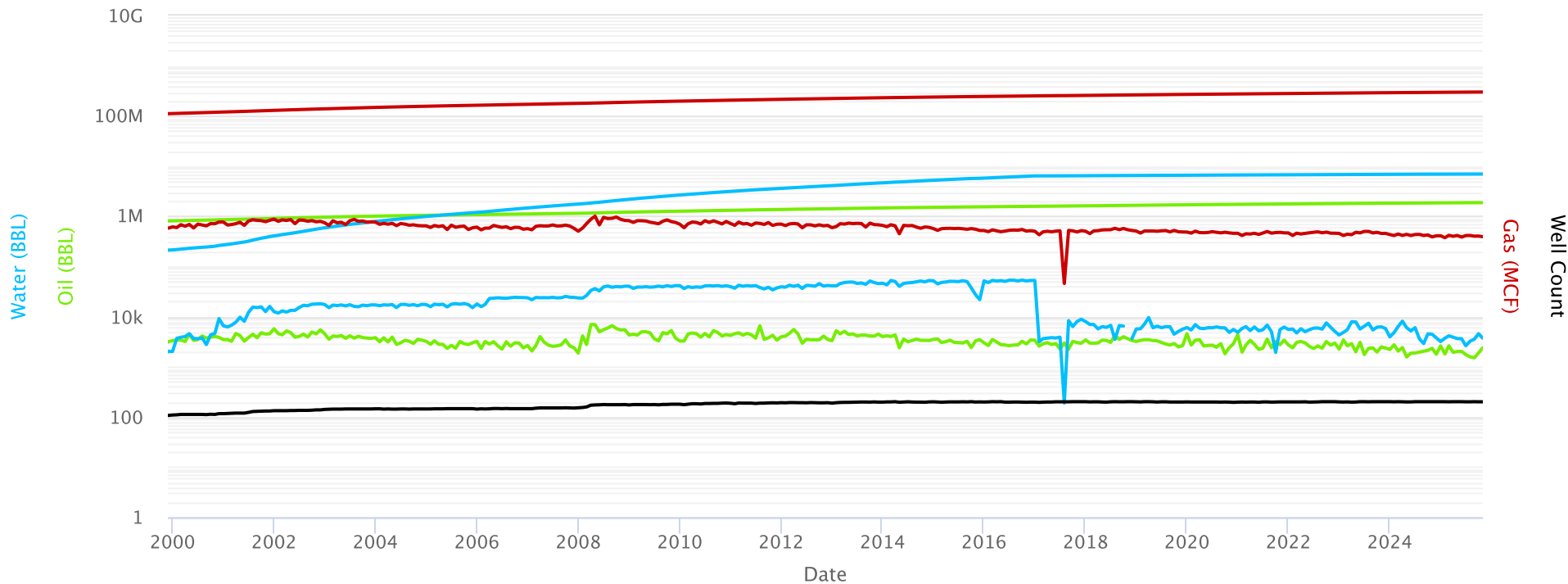
Monthly Production



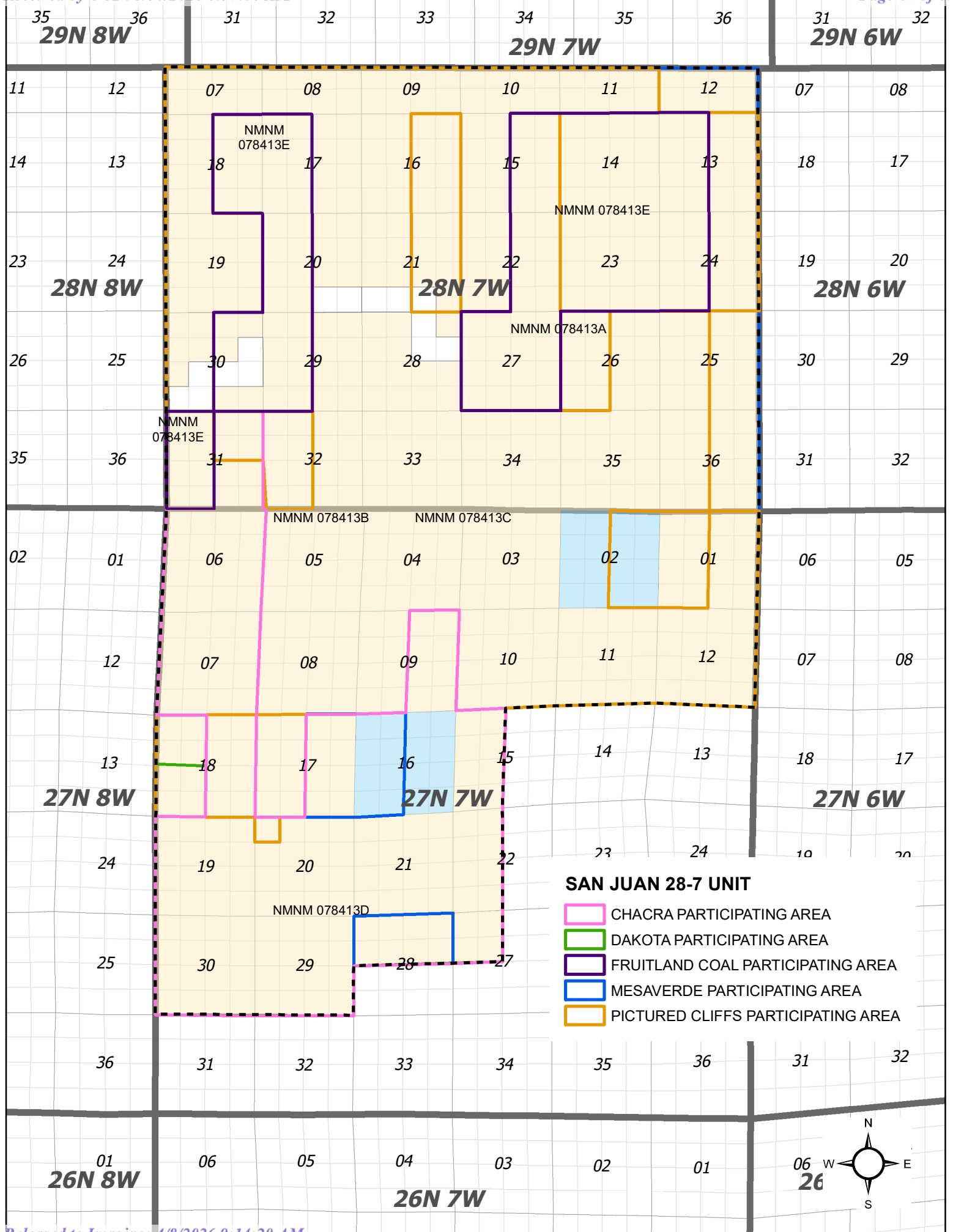
San Juan 28-7 Unit NMNM 078413C DK

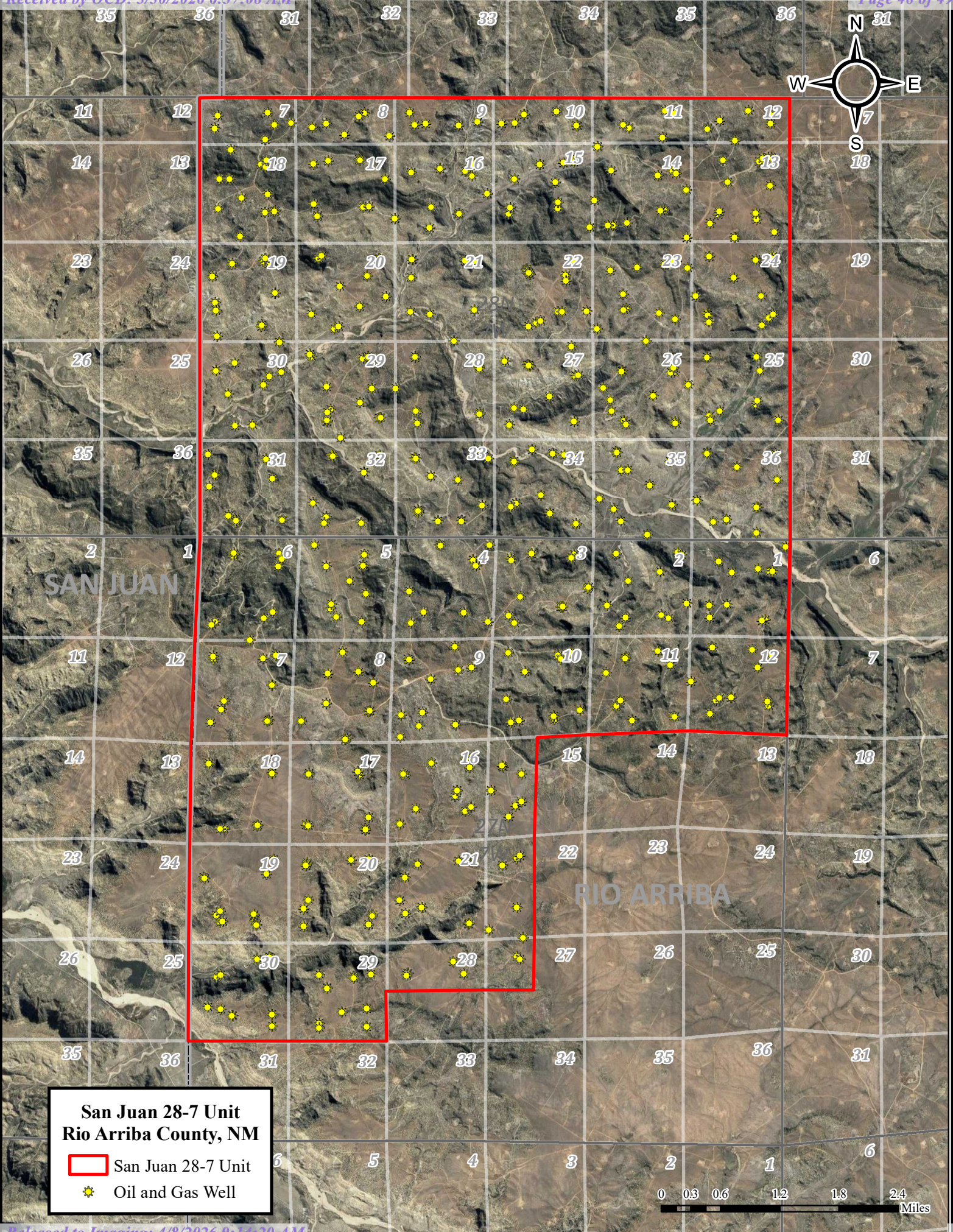
Dakota PA - 10th Revision

Monthly Production









San Juan 28-7 Unit
Rio Arriba County, NM

- San Juan 28-7 Unit
- ★ Oil and Gas Well

Sante Fe Main Office
Phone: (505) 476-3441

General Information
Phone: (505) 629-6116

Online Phone Directory
<https://www.emnrd.nm.gov/ocd/contact-us>

State of New Mexico
Energy, Minerals and Natural Resources
Oil Conservation Division
1220 S. St Francis Dr.
Santa Fe, NM 87505

CONDITIONS

Action 568672

CONDITIONS

| | |
|--|---|
| Operator: HILCORP ENERGY COMPANY 1111 Travis Street Houston, TX 77002 | OGRID: 372171 |
| | Action Number: 568672 |
| | Action Type: [HEAR] Order Compliance/Progress Report (ORDER COMPLIANCE REPORT) |

CONDITIONS

| Created By | Condition | Condition Date |
|------------|---------------------|----------------|
| dmcclure | ACCEPTED FOR RECORD | 4/8/2026 |