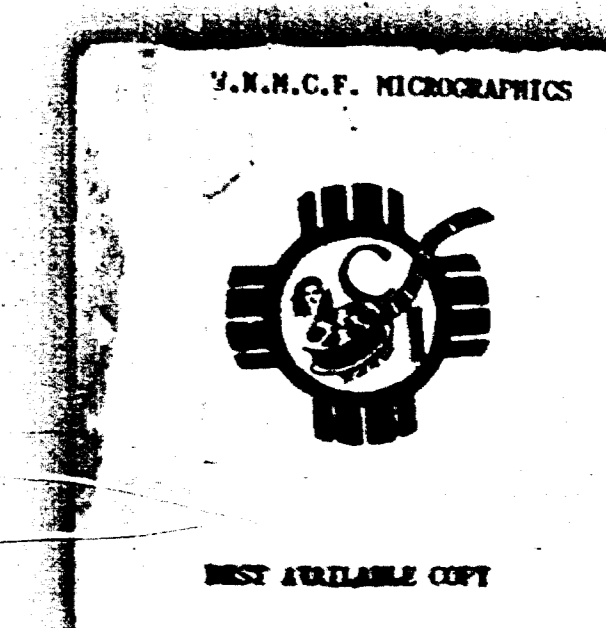
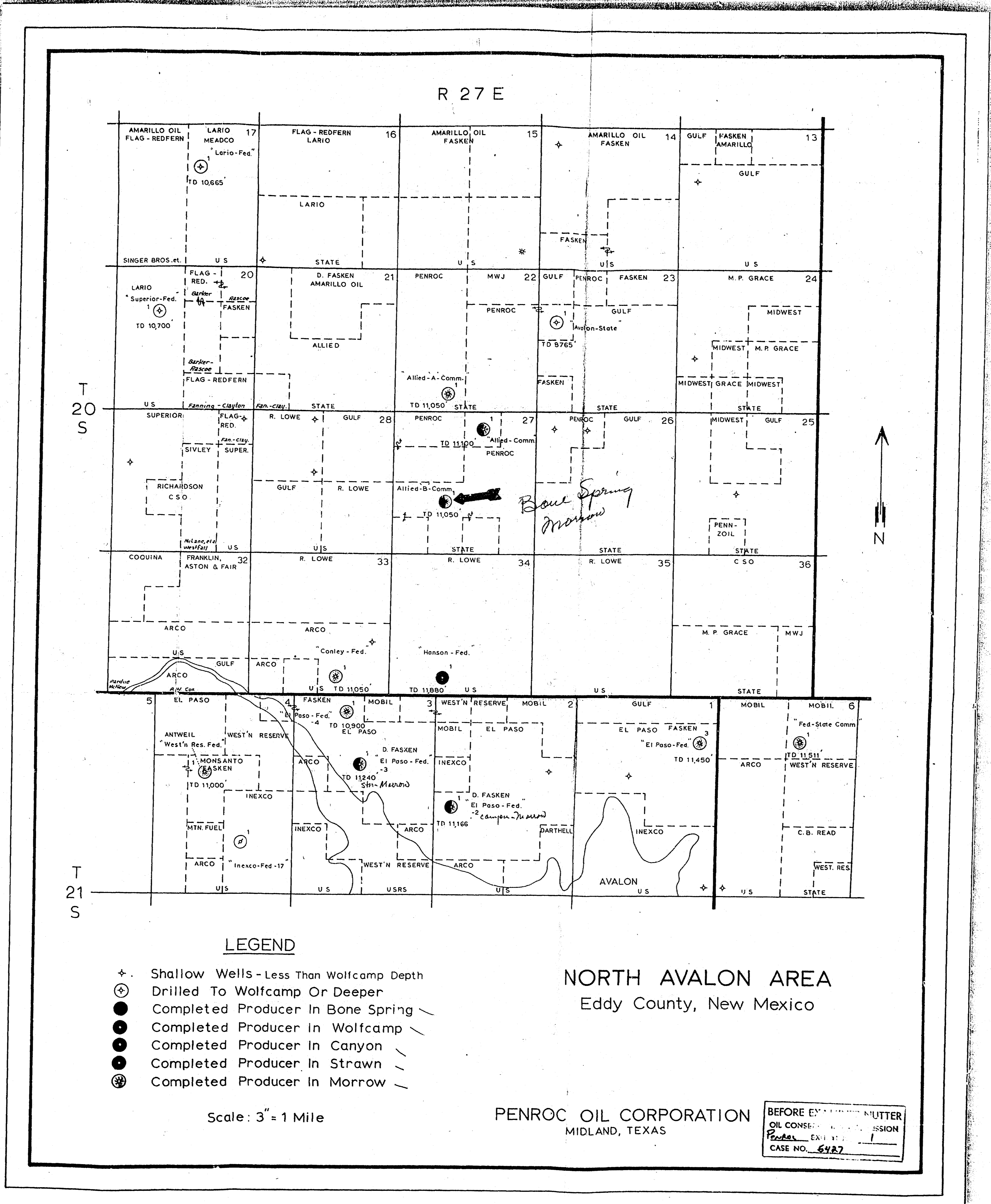


Case No.  
5427

Large Exhibits





T  
20  
S

T  
21  
S

**LEGEND**

- + Shallow Wells - Less Than Wolfcamp Depth
- ⊕ Drilled To Wolfcamp Or Deeper
- Completed Producer In Bone Spring
- Completed Producer In Wolfcamp
- Completed Producer In Canyon
- Completed Producer In Strawn
- ⊕ Completed Producer In Morrow



**Welex** COMBINED DENSITY LOG

COMPANY: PENNOC OIL CORPORATION

WELL: ALLIED "H" COMM. # 1

FIELD: WILDCAT

COUNTY: KIDDY STATE: NEW MEXICO

Location: 1080' P.S.L. & 1080' P.W.L. Other Service: Drill Induction

Set: 27 Top: 20-S Log: 27-E

Permanent Datum: Ground Level Elev. 3221'

Log Measured from: 0' to 11,050' Ft. Above Perm. Datum

Drilling Measured from: 0' to 11,050' Ft. Above Perm. Datum

Date: 8/28/74

Run No.: 0100

Type Log: Density

Depth-Driller: 4,325

Depth-Tester: 4,325

Bottom Logged Interval: 4,325 - 11,050

Top Logged Interval: 4,325 - 11,050

Type Fluid in Hole: Surface

Salinity, PPM Cl: None

Level: 0.1

Temp. Rec. Temp. Log: 102° F.

Operating Log: 0.11, 0.12, 0.13, 0.14, 0.15, 0.16, 0.17, 0.18, 0.19, 0.20, 0.21, 0.22, 0.23, 0.24, 0.25, 0.26, 0.27, 0.28, 0.29, 0.30, 0.31, 0.32, 0.33, 0.34, 0.35, 0.36, 0.37, 0.38, 0.39, 0.40, 0.41, 0.42, 0.43, 0.44, 0.45, 0.46, 0.47, 0.48, 0.49, 0.50, 0.51, 0.52, 0.53, 0.54, 0.55, 0.56, 0.57, 0.58, 0.59, 0.60, 0.61, 0.62, 0.63, 0.64, 0.65, 0.66, 0.67, 0.68, 0.69, 0.70, 0.71, 0.72, 0.73, 0.74, 0.75, 0.76, 0.77, 0.78, 0.79, 0.80, 0.81, 0.82, 0.83, 0.84, 0.85, 0.86, 0.87, 0.88, 0.89, 0.90, 0.91, 0.92, 0.93, 0.94, 0.95, 0.96, 0.97, 0.98, 0.99, 1.00

Recorded By: D.H. Sicaud

Witnessed By: M. J. Smith

Run No.	From	To	Wg.	From	To
100	7-7/8"	2,150'	11,050'	0	300'
101			0	0	2,150'

EQUIPMENT DATA

Run No.	From	To	Wg.	From	To
100	7-7/8"	2,150'	11,050'	0	300'
101			0	0	2,150'

LOGGING DATA

Run No.	From	To	Wg.	From	To
100	7-7/8"	2,150'	11,050'	0	300'
101			0	0	2,150'

**GAMMA**

APR Common Ray Units

0 100 200

**CALIPER**

Average Diameter, in.

0" 1.0" 1.5" 2.0"

**BULK DENSITY**

Grams/cc (when  $\rho_s = 2.65$ )

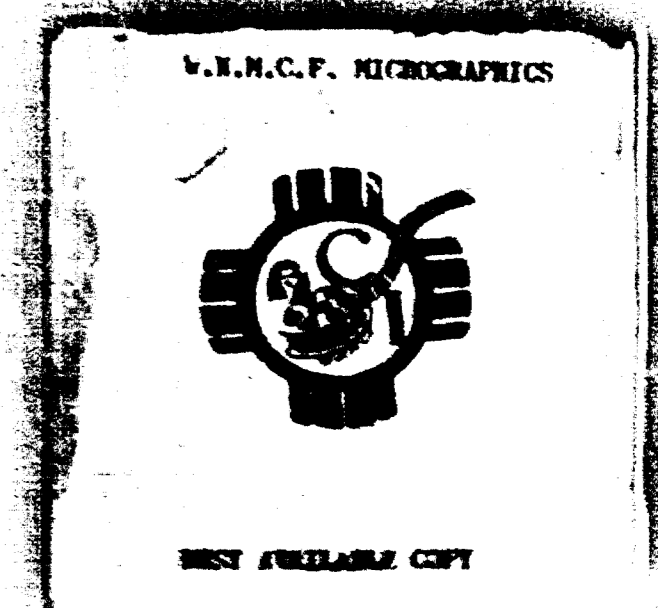
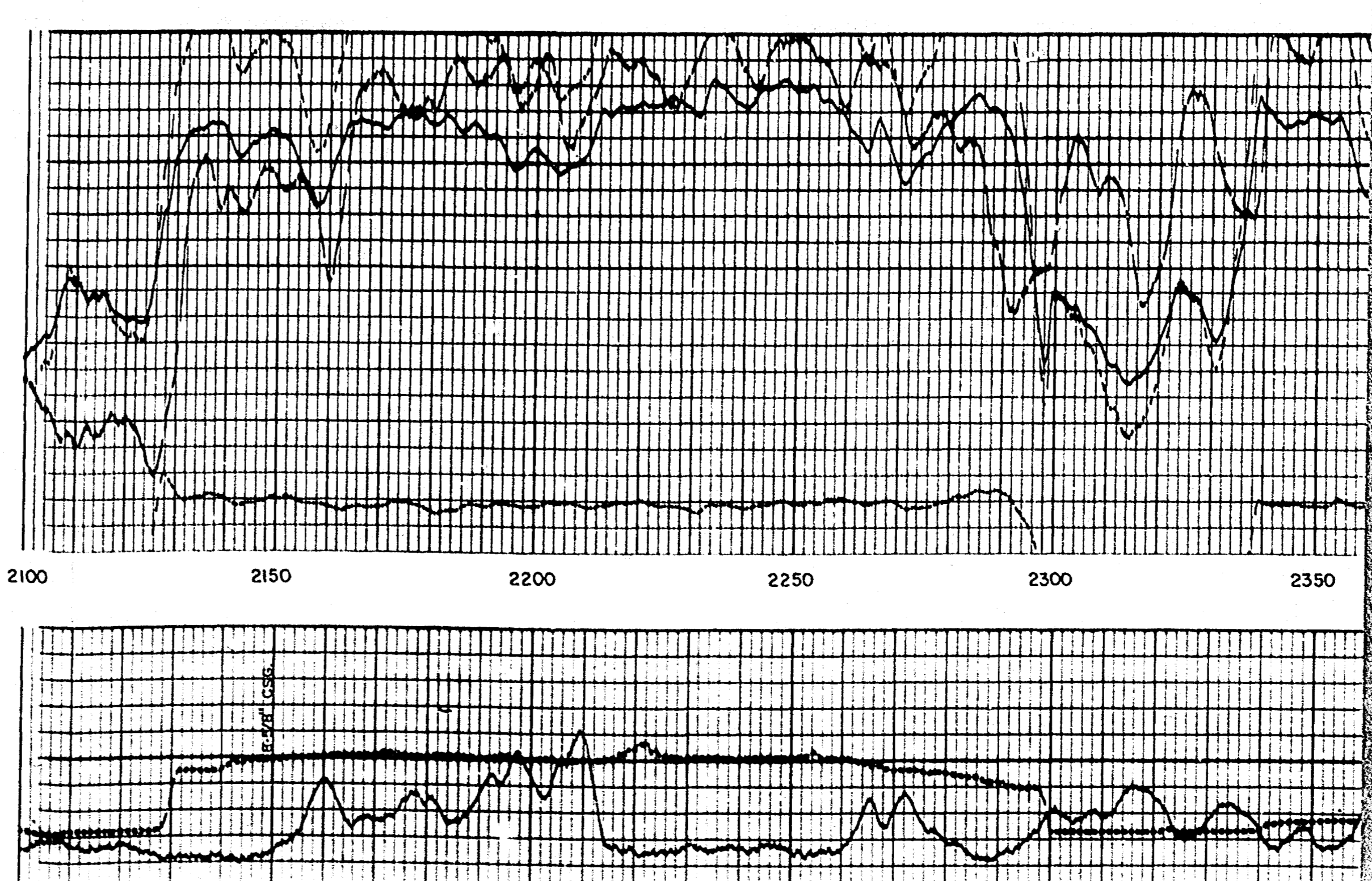
2.0 2.5 3.0

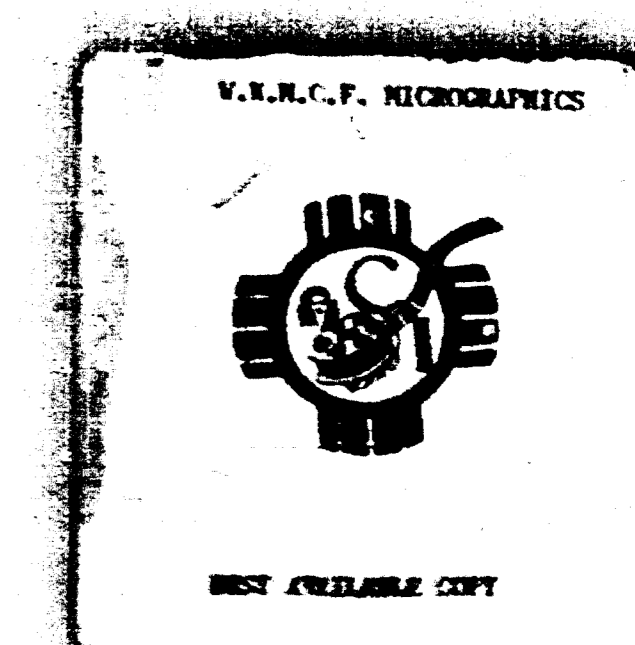
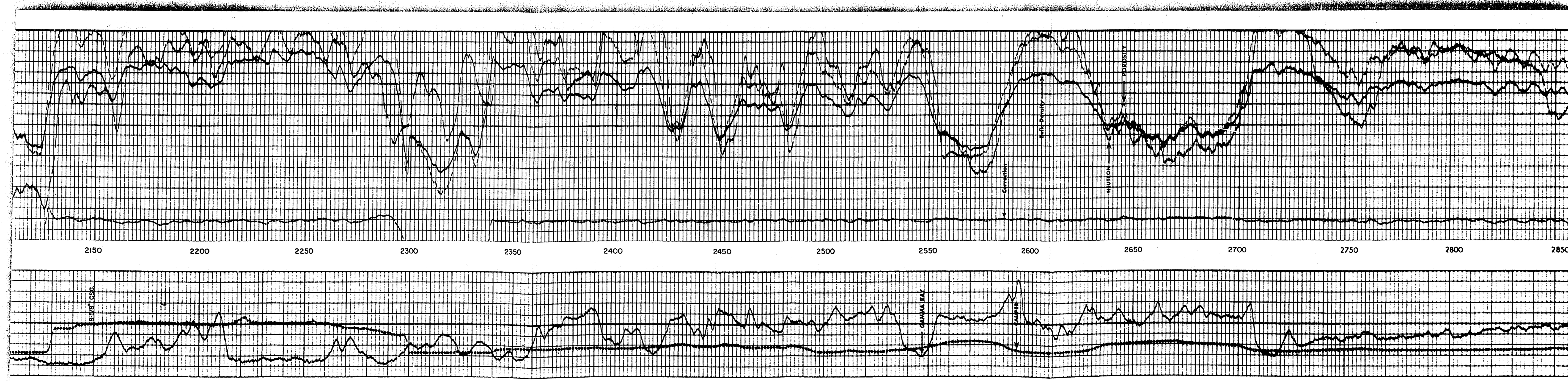
**POROSITY (%)**  $P_0 = 2.65 \times 2.71$

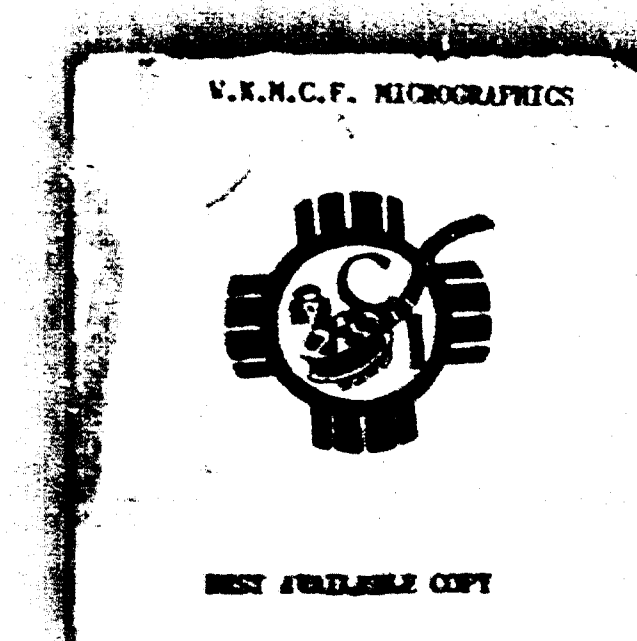
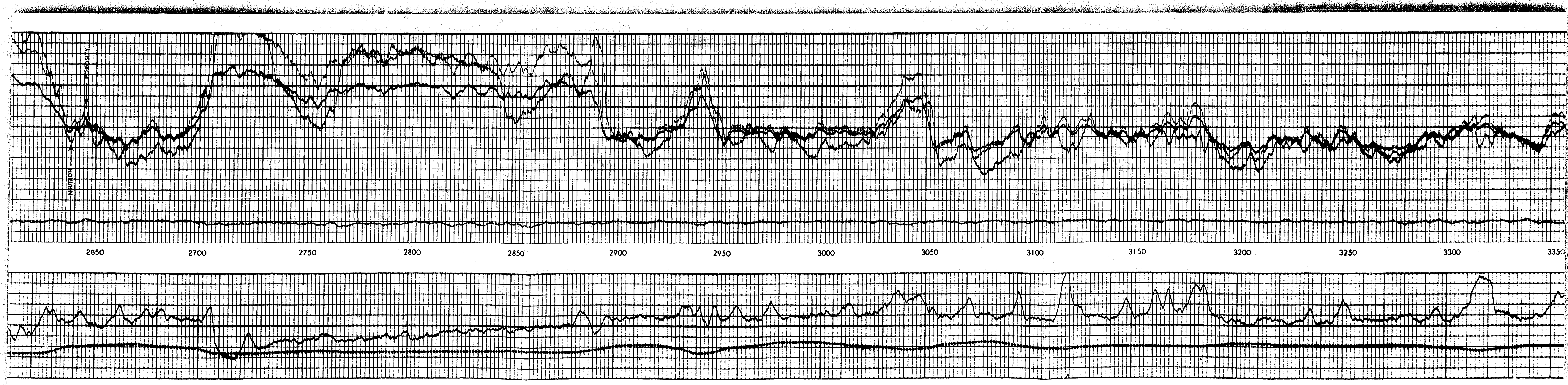
30% 20% 10% 0% -10%

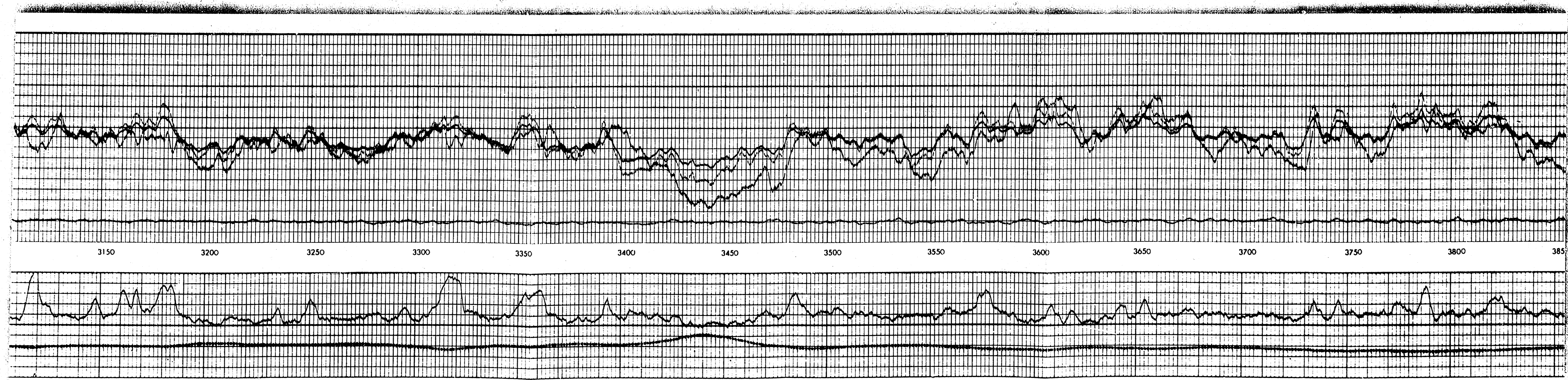
**CORRECTION (gram/cc)**

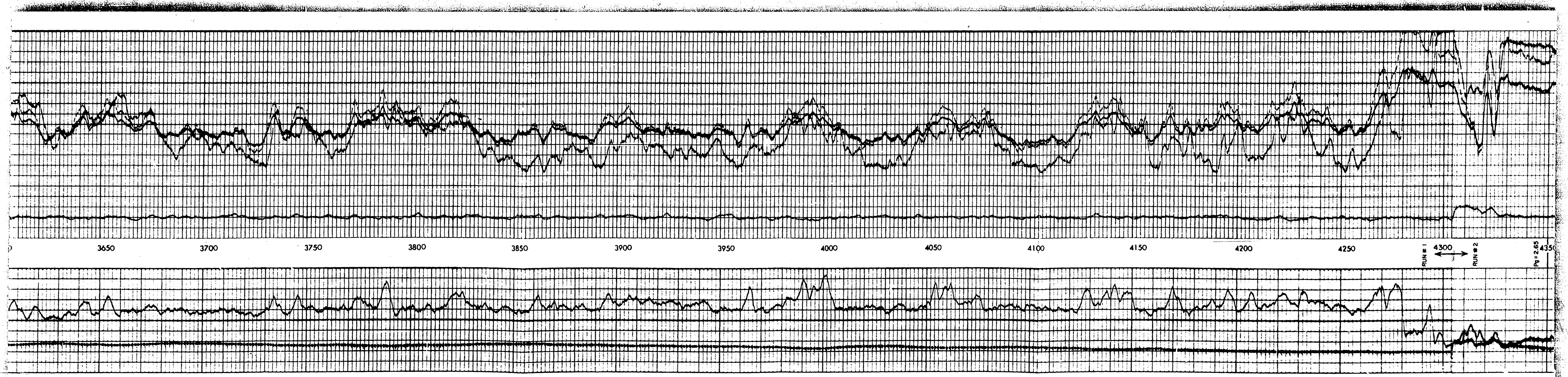
-0.4 0.2 0.4

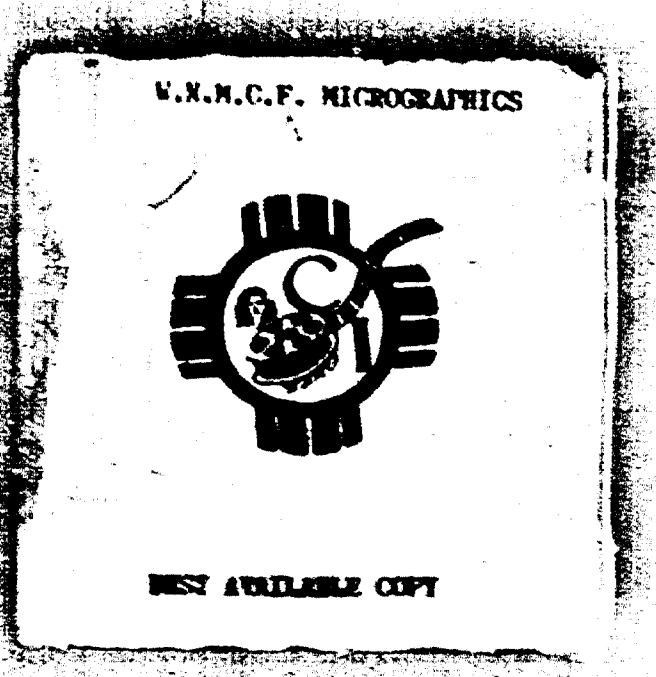
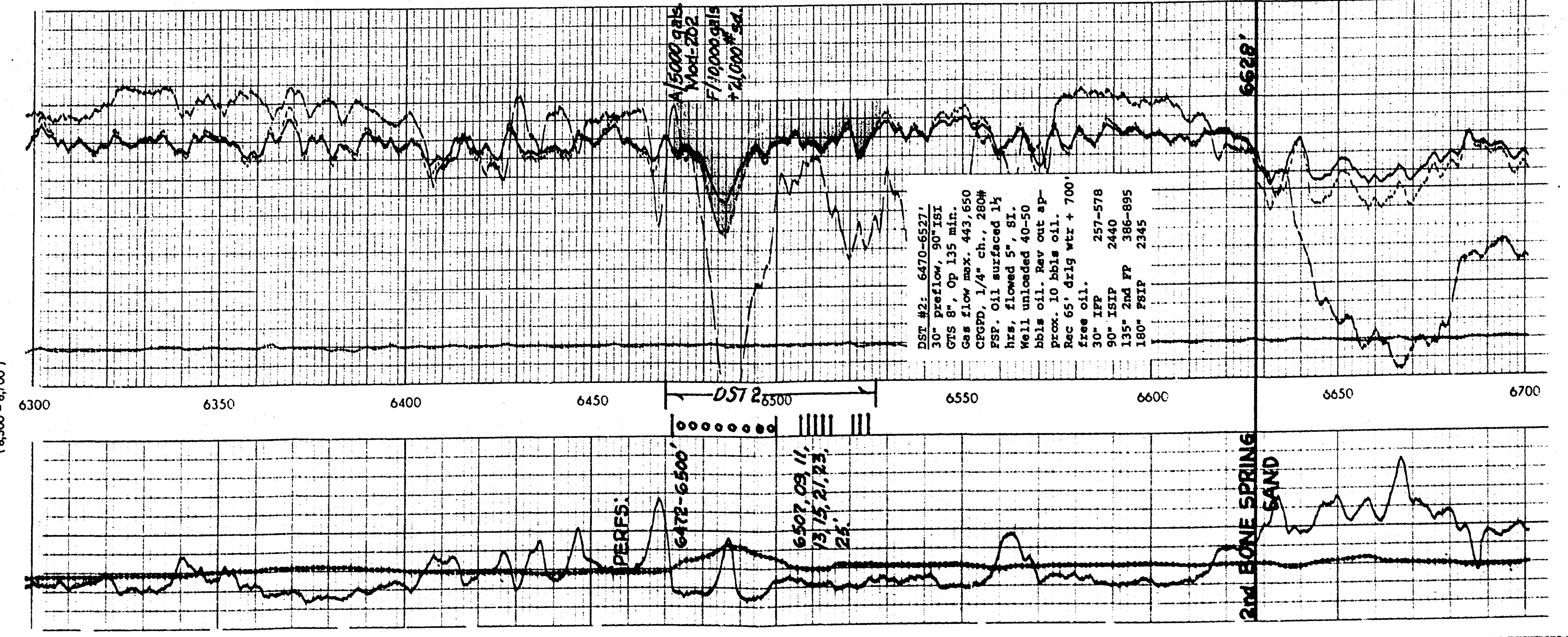
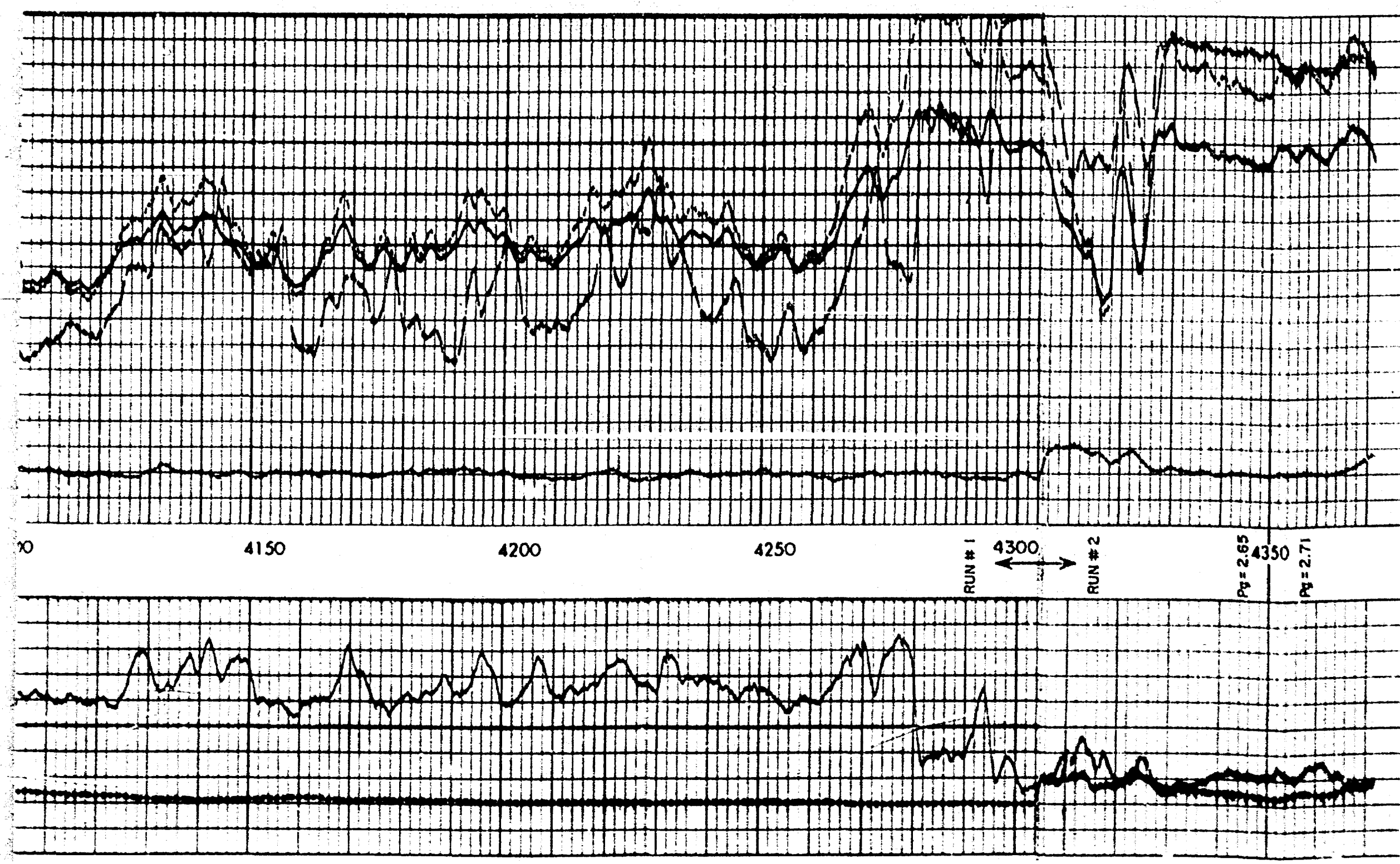




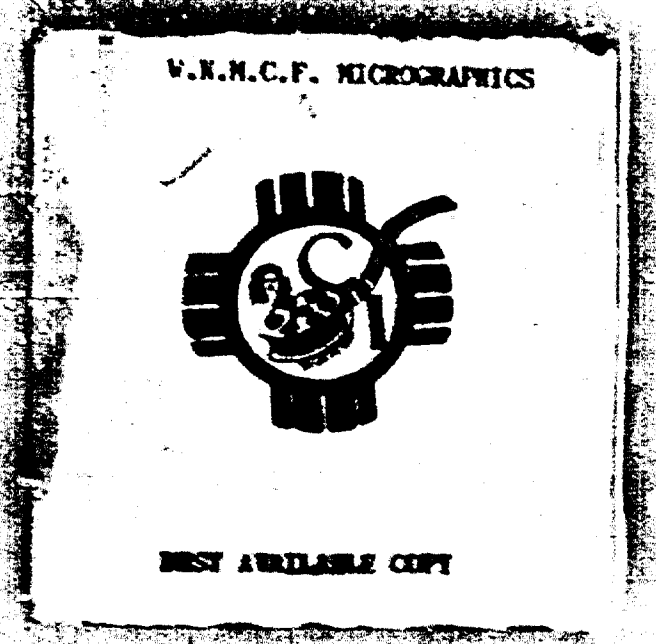
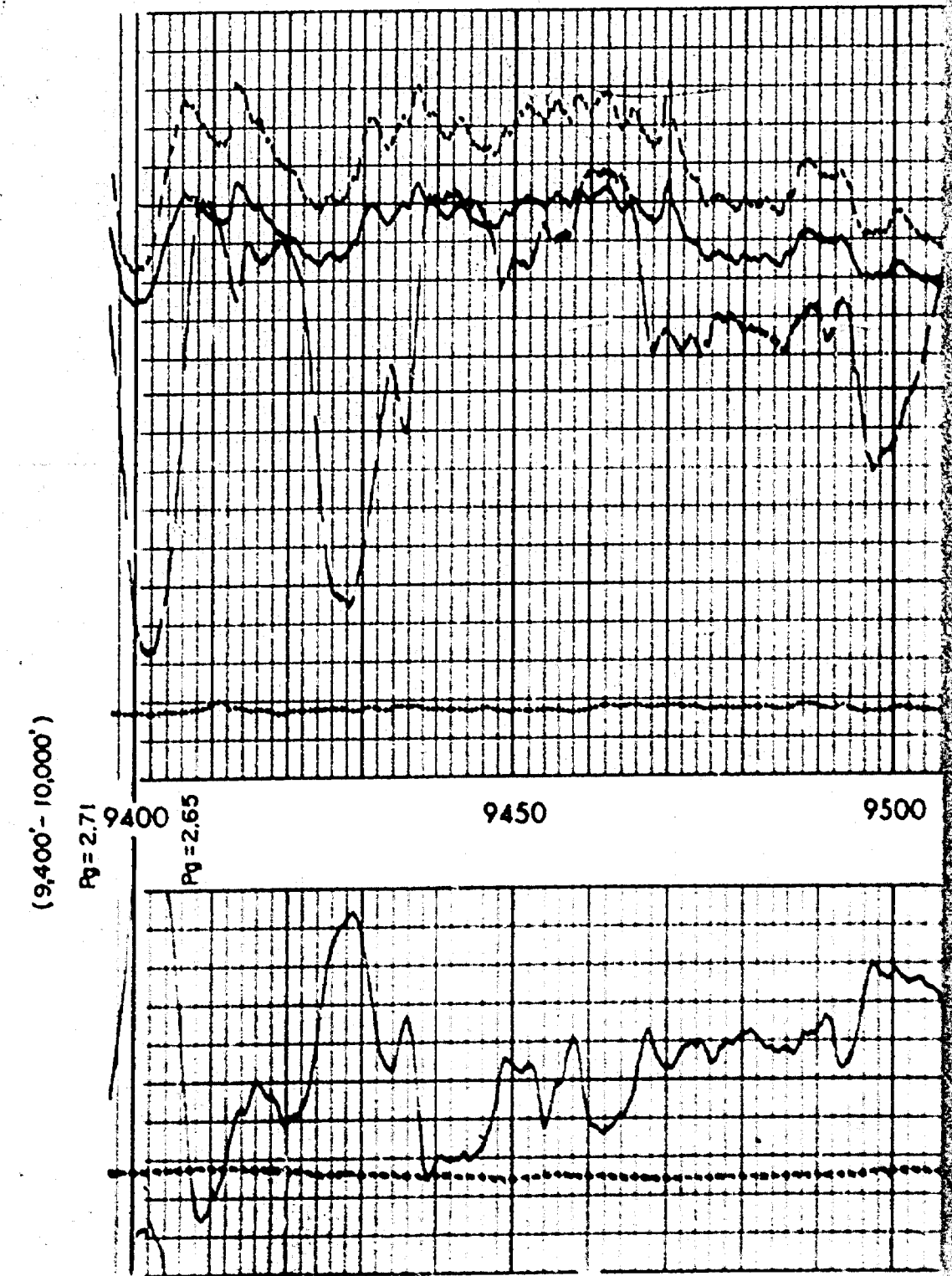
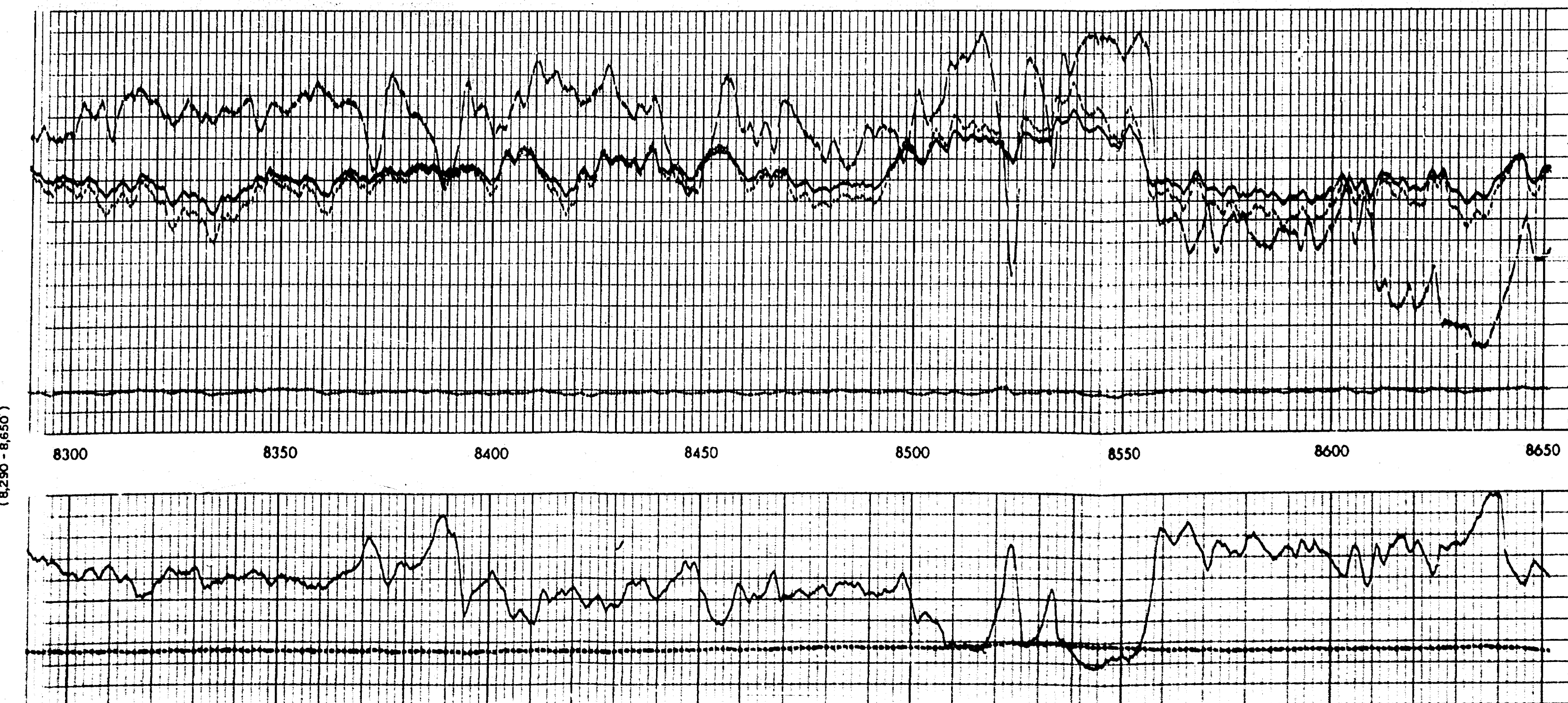
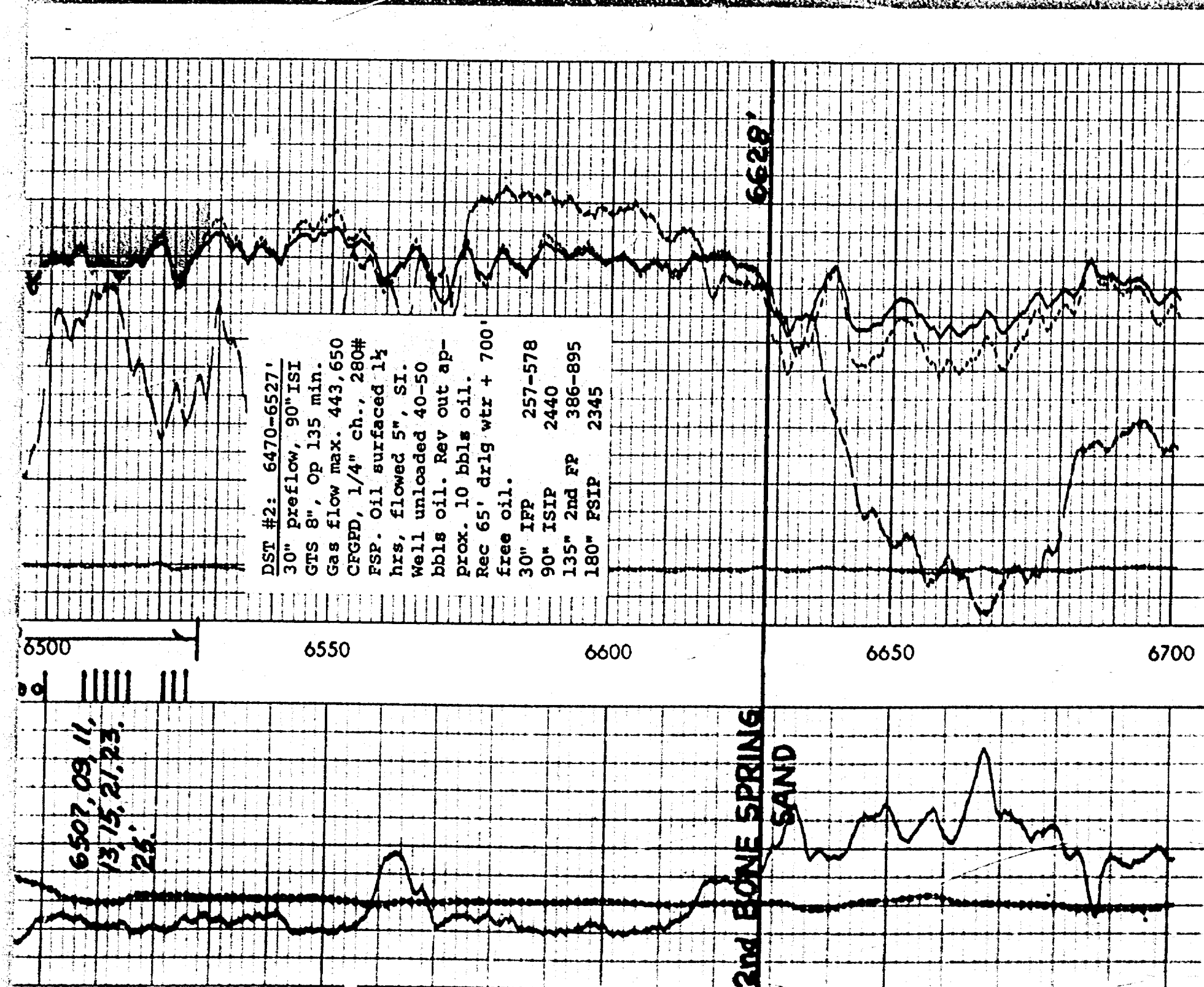


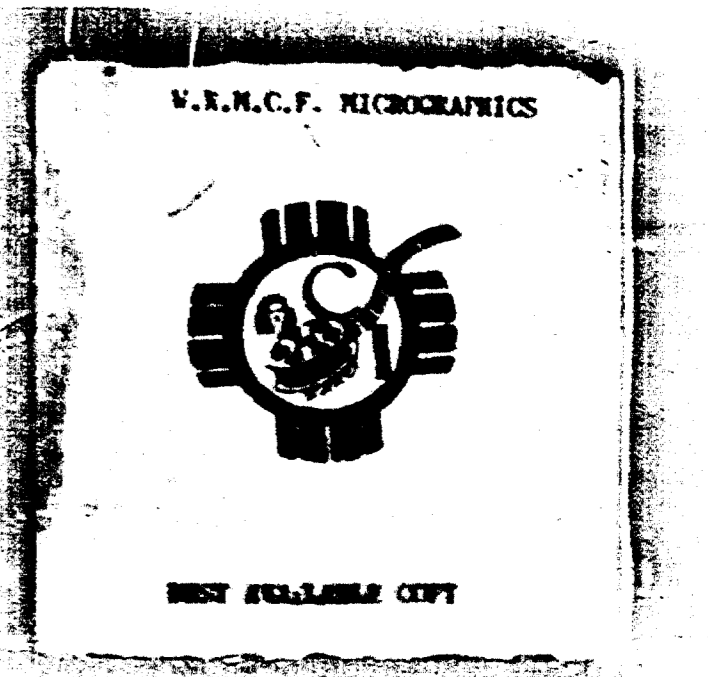
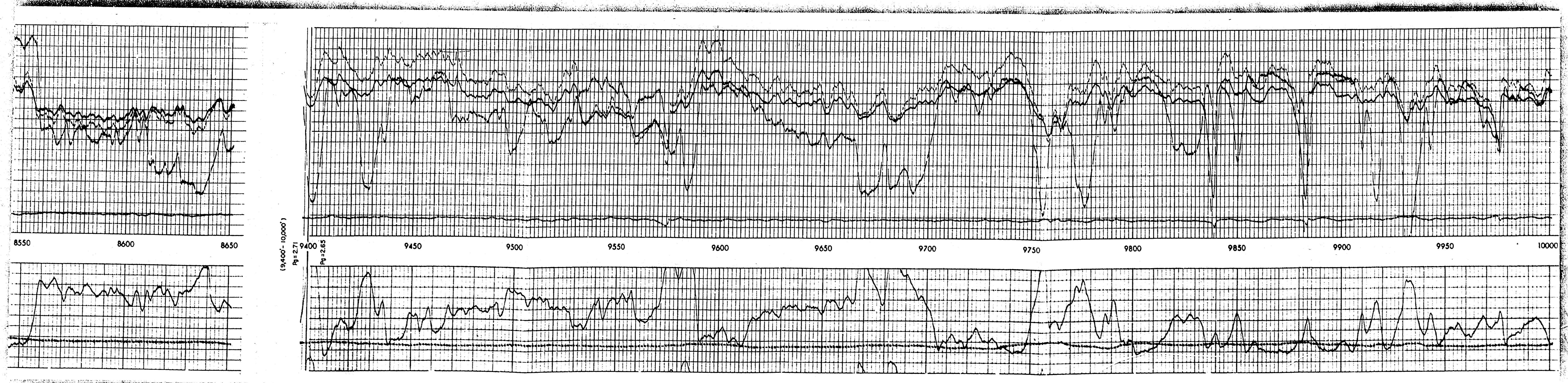


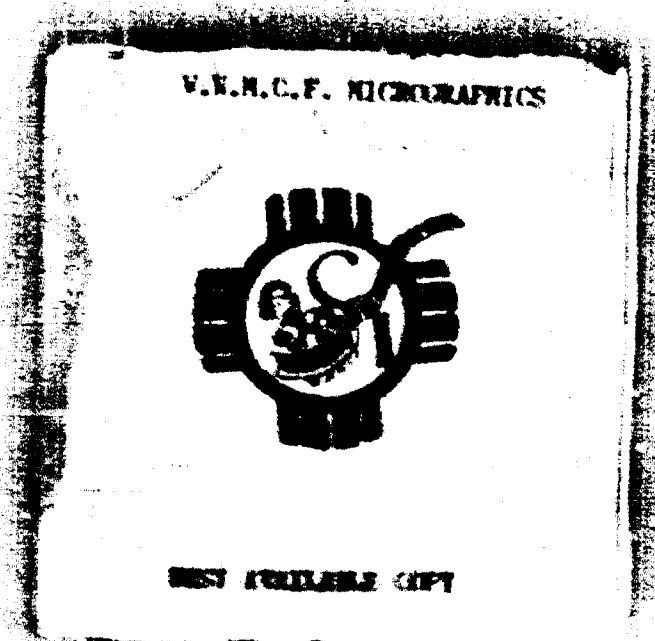
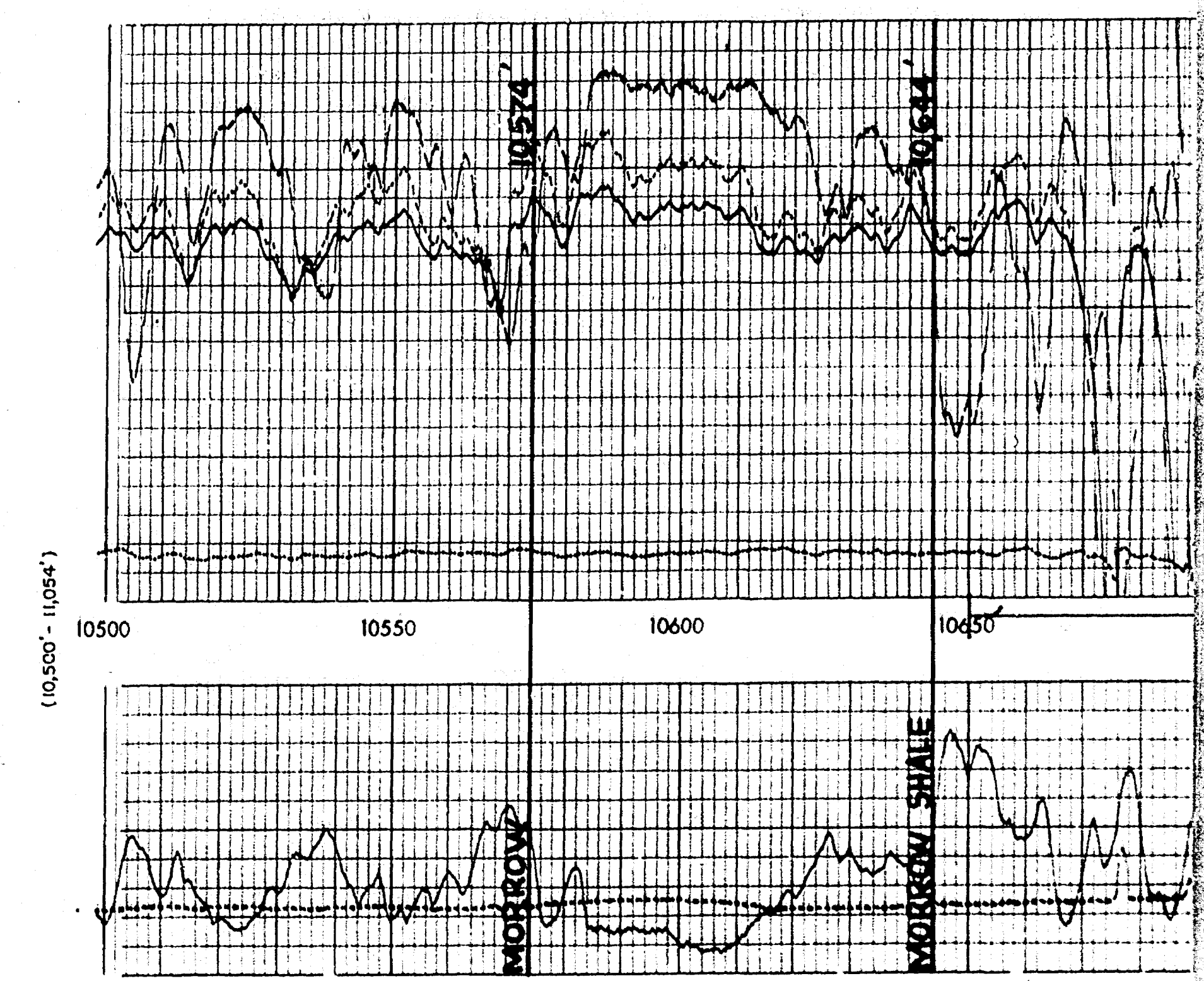
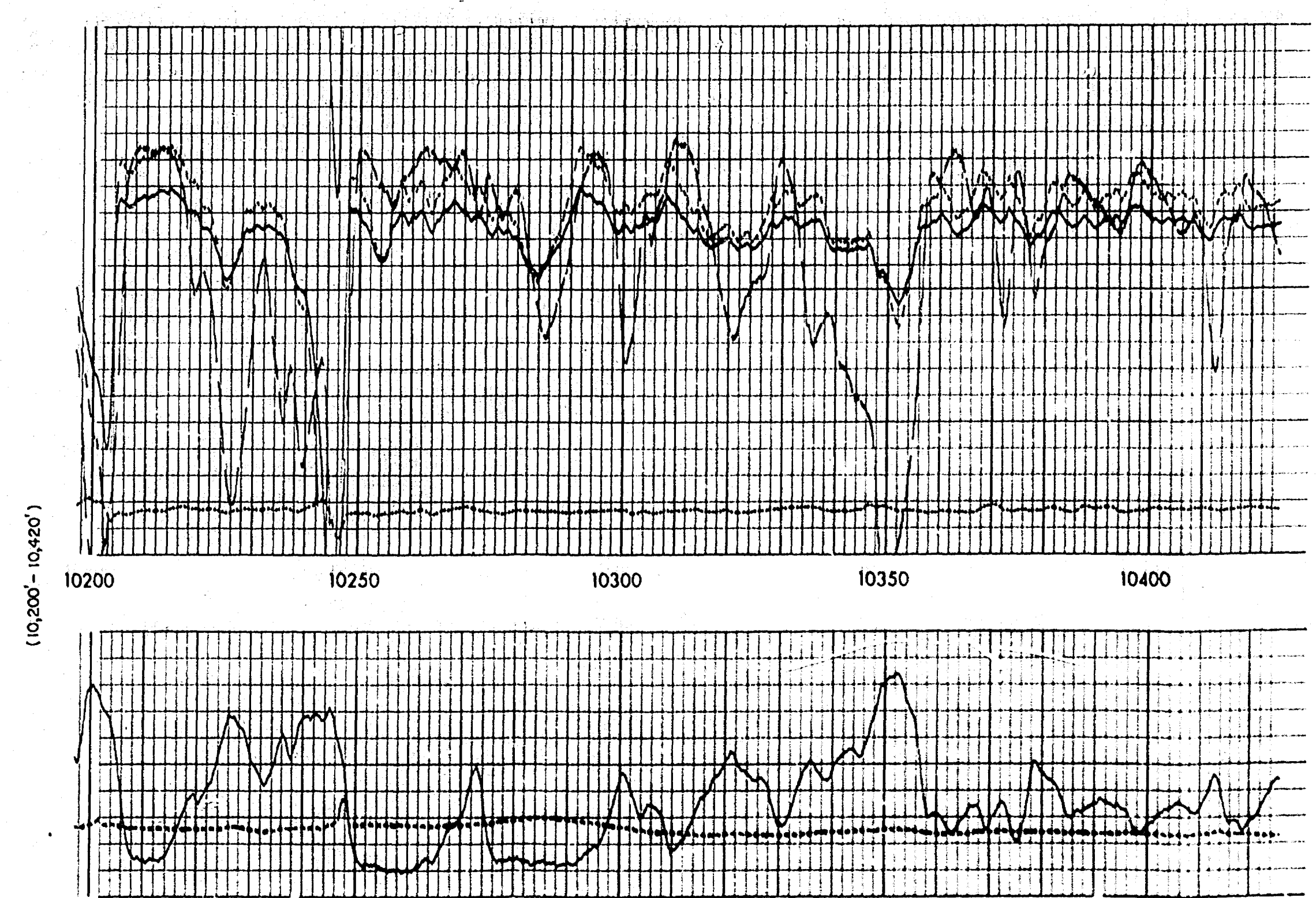
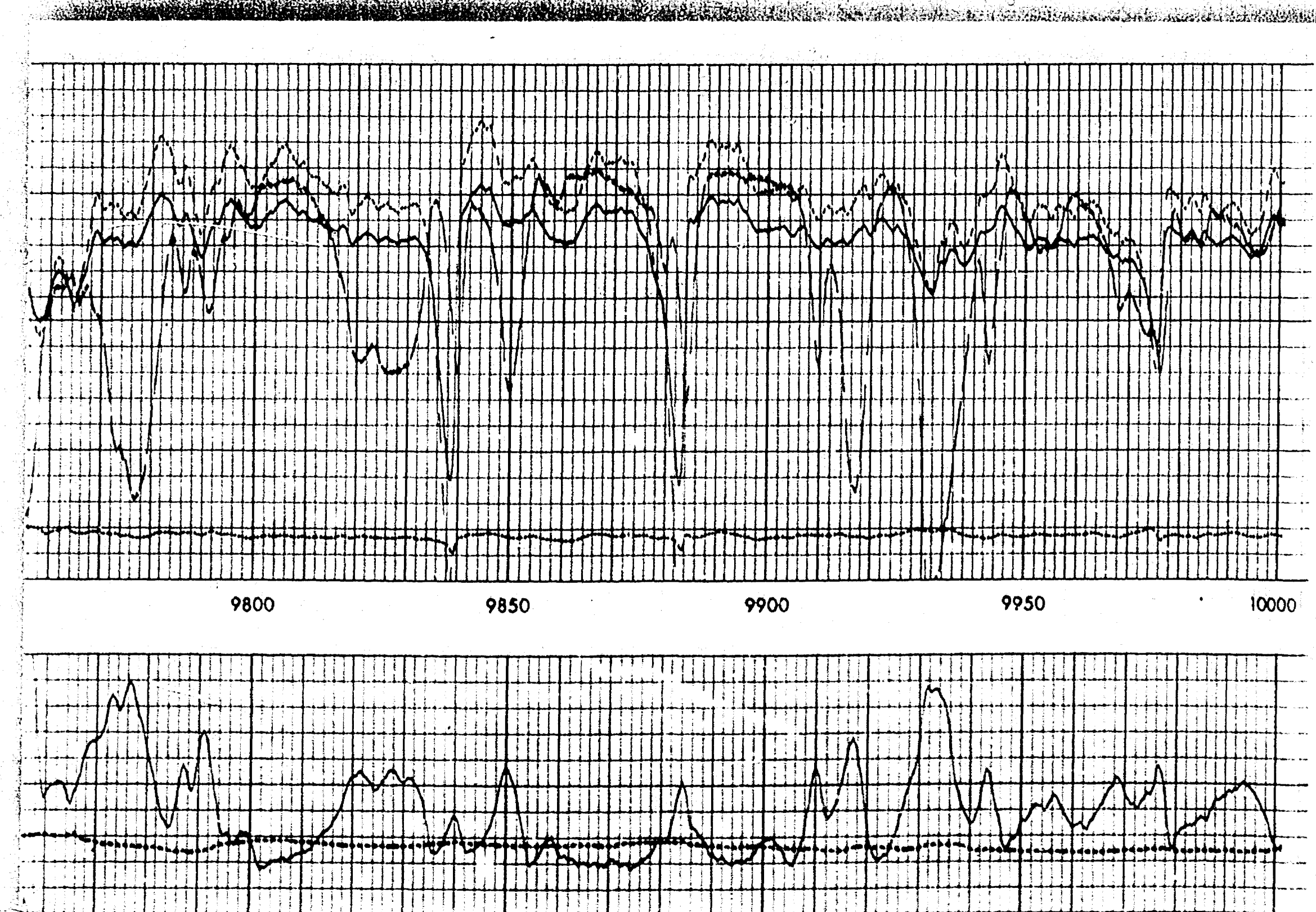


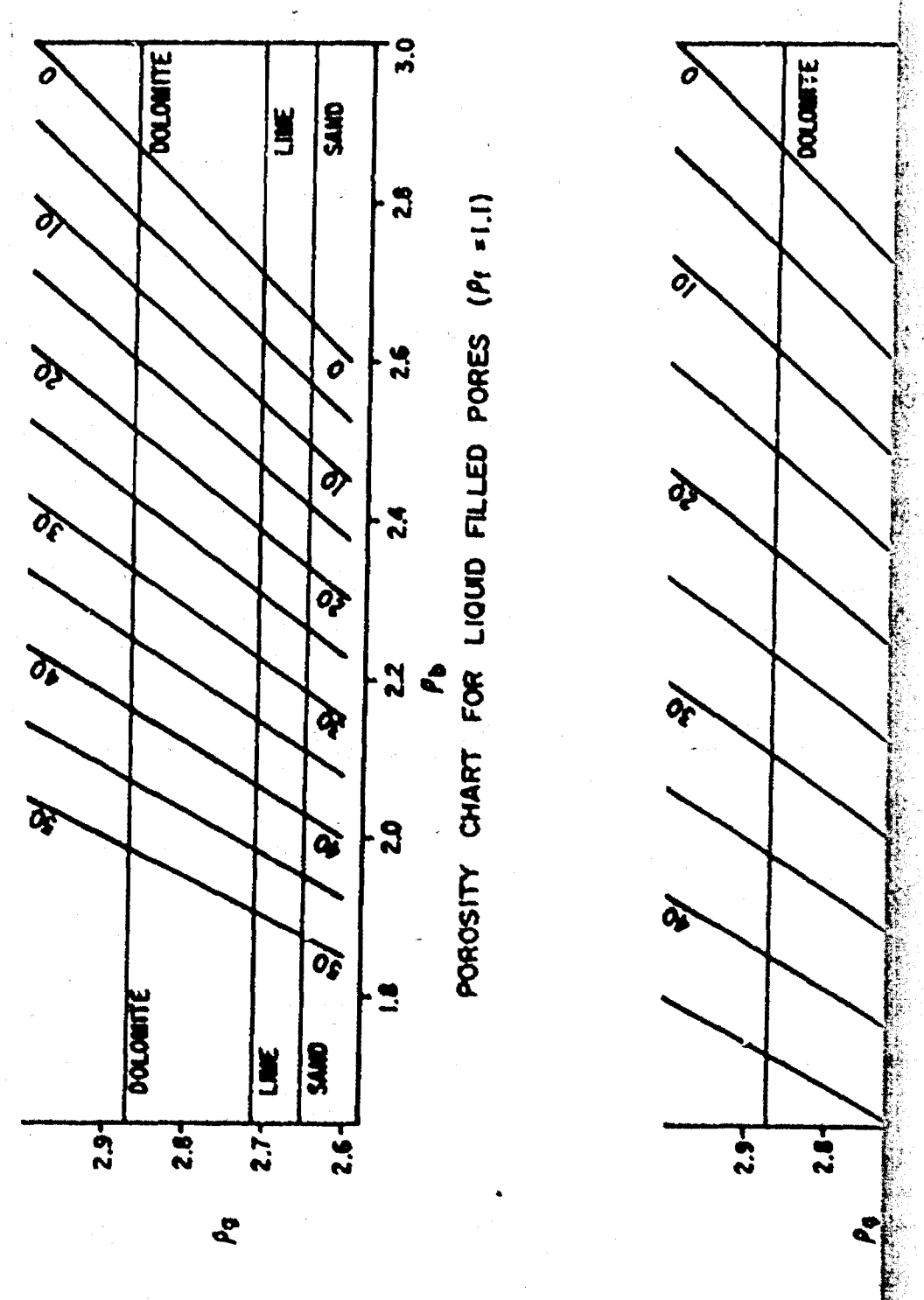
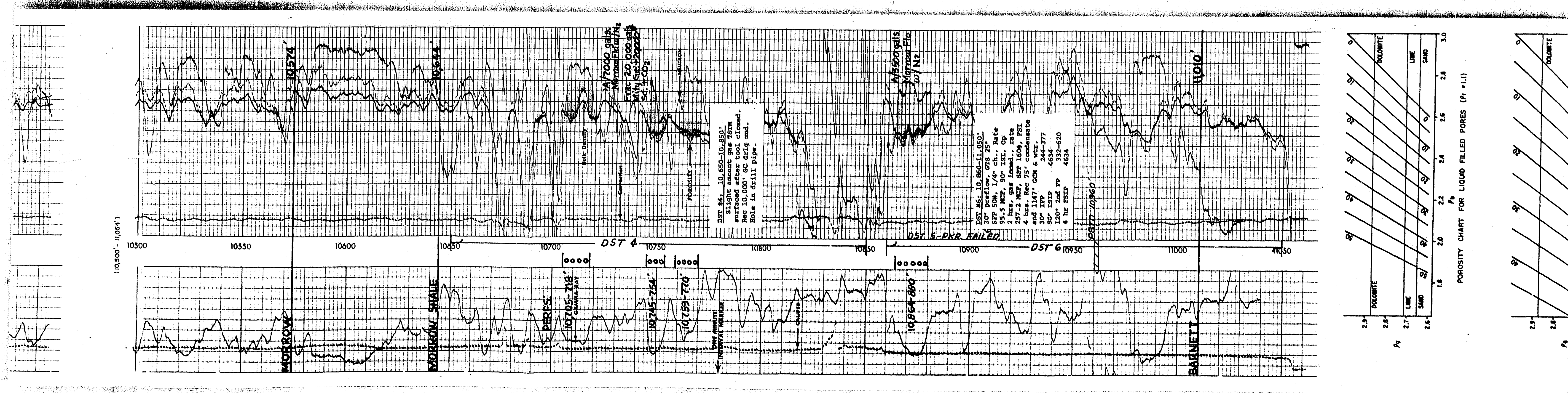


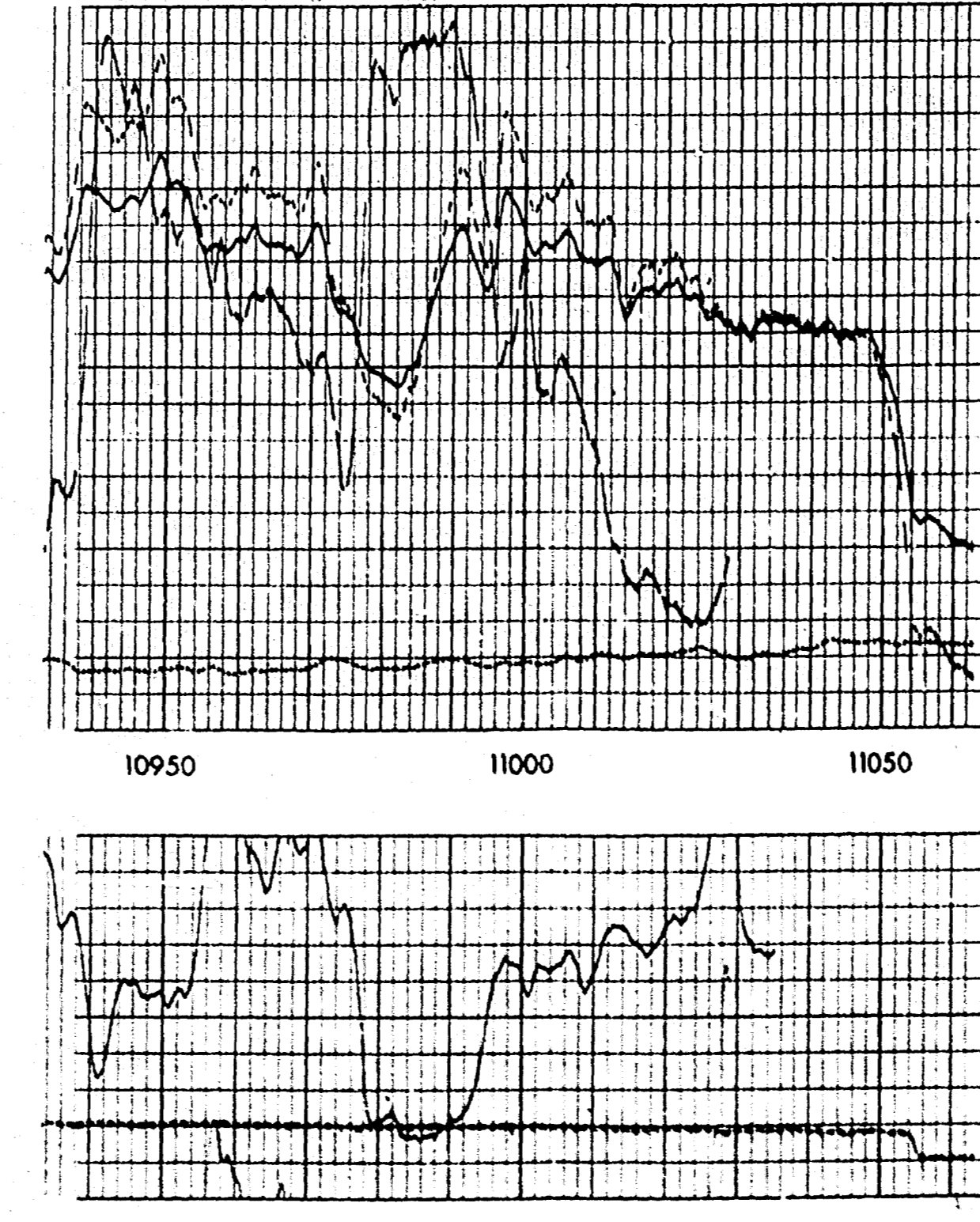
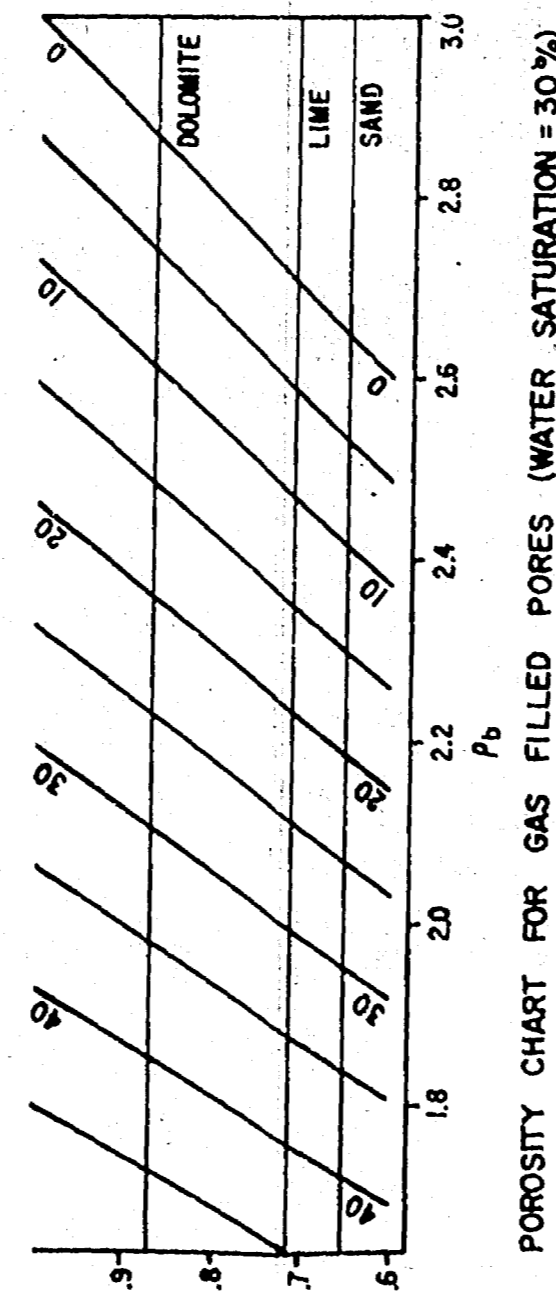
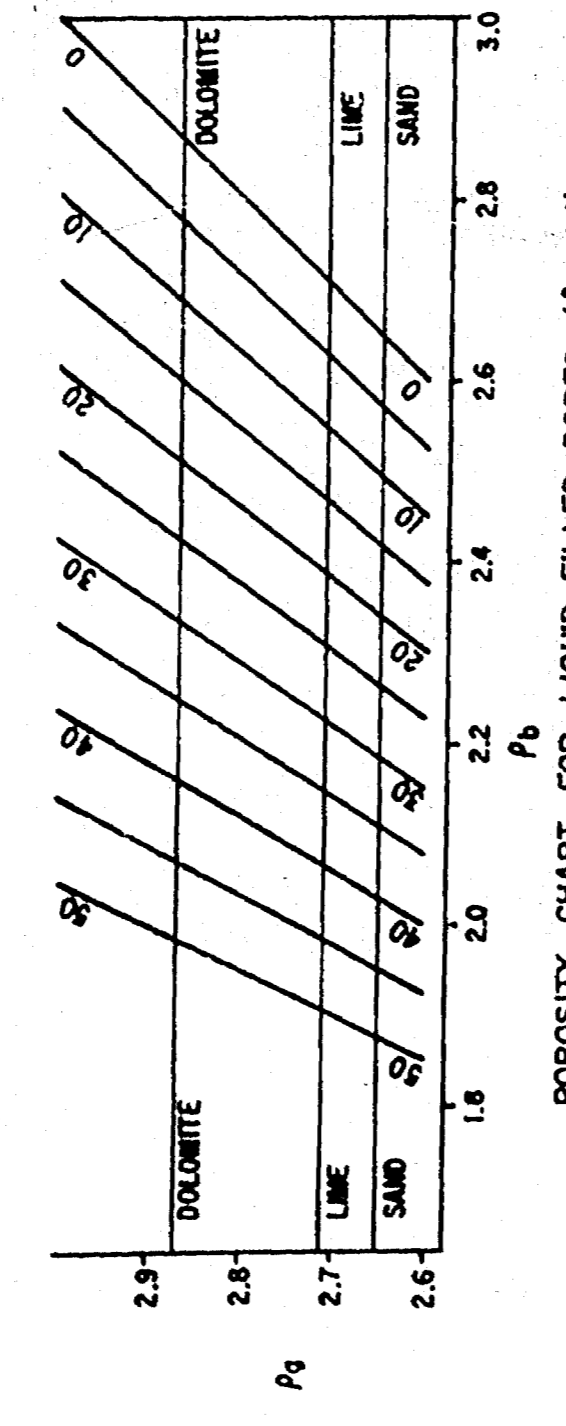
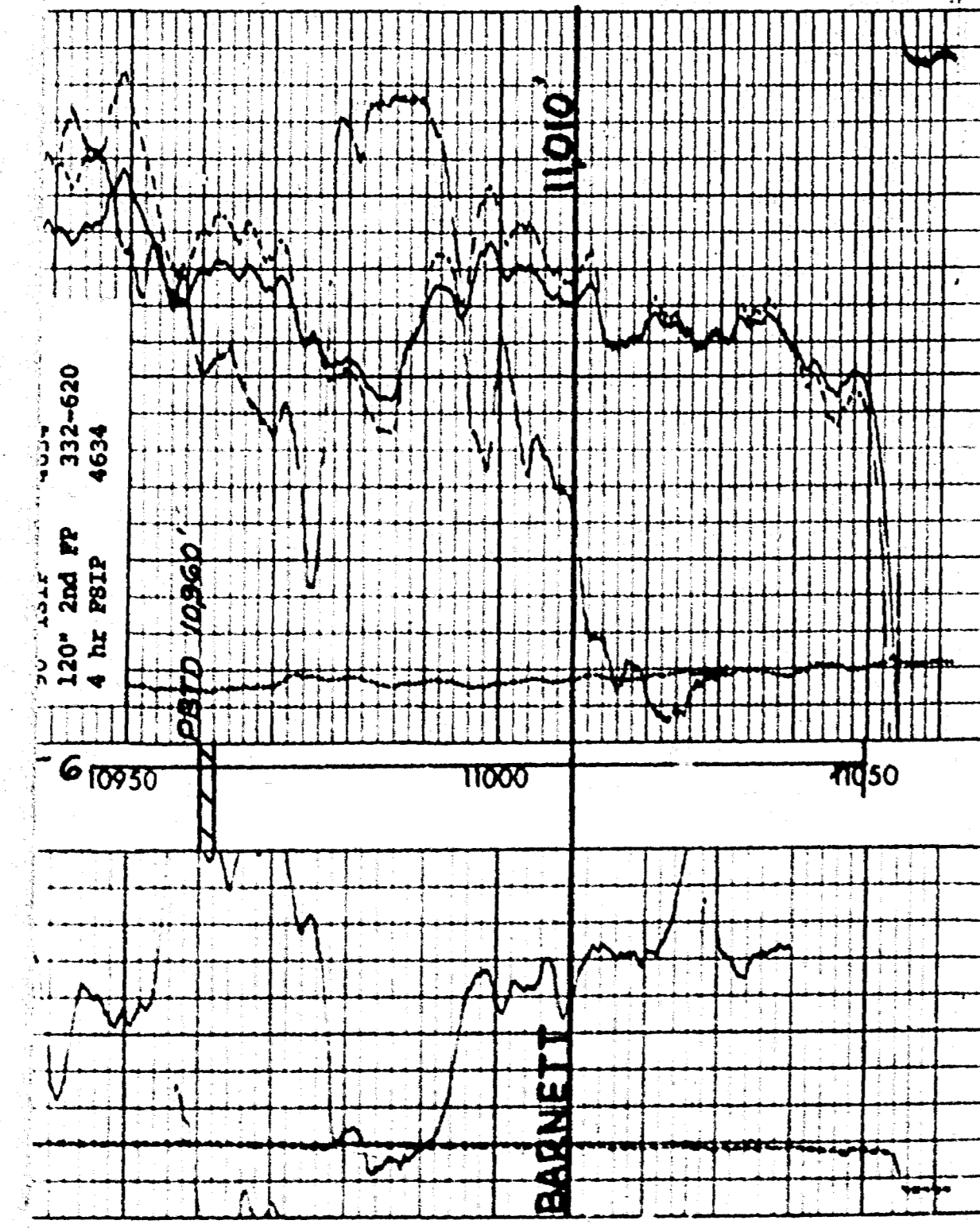












**CORRECTION (gram/cc)**

30% 2.05 10% 0.5 -10% 0.05

0+ 0.2 0.4

**POROSITY (%)  $P_v = 2.65 \text{ \& } 2.71$**

2.0 2.5 3.0

1.5 2.0

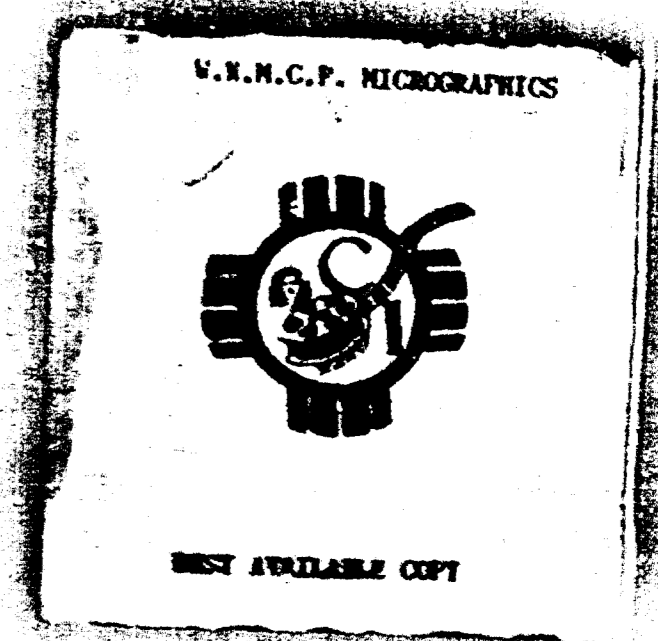
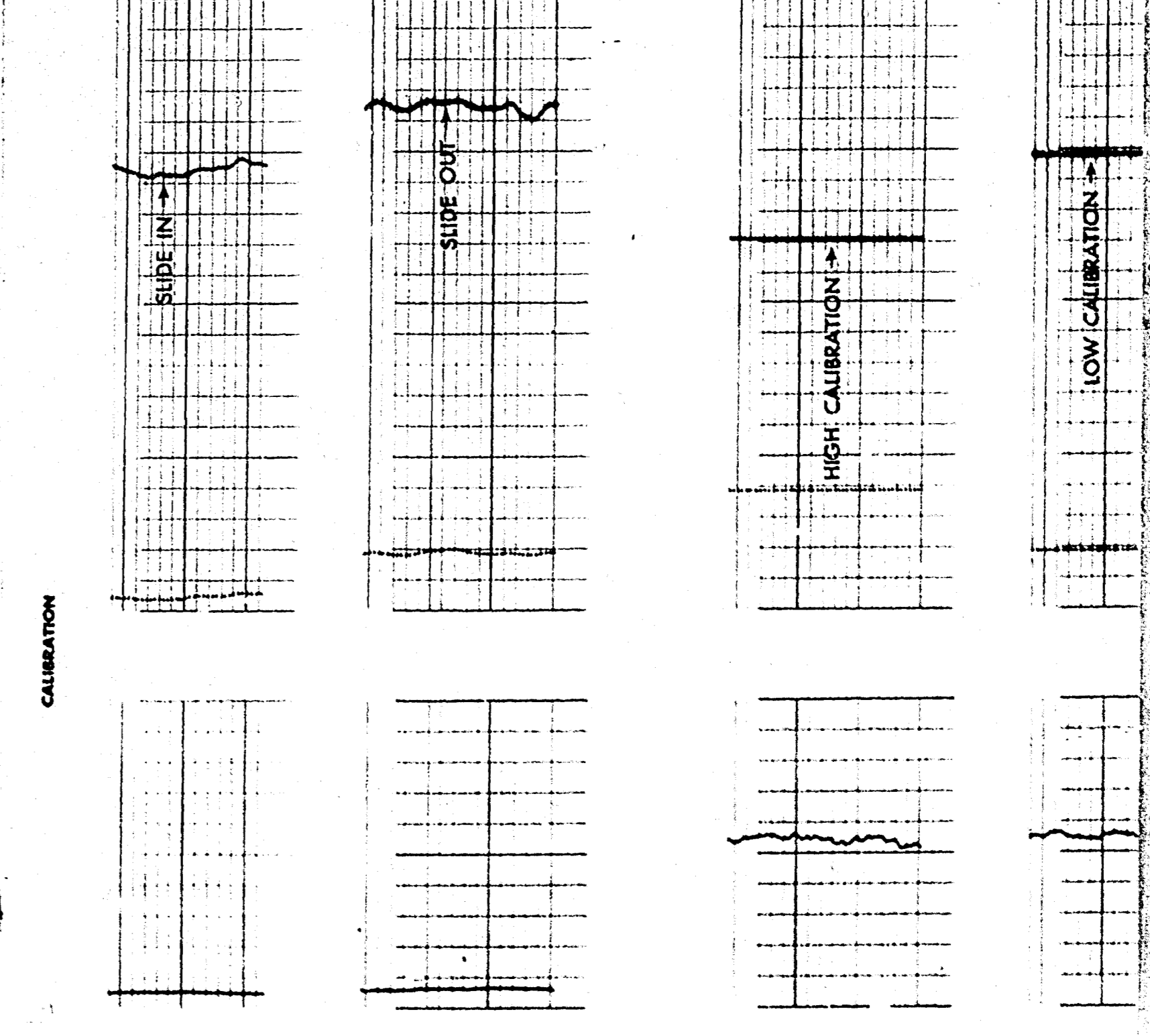
**BULK DENSITY**  
Grams/cc (lb/in<sup>3</sup>) = 0.5

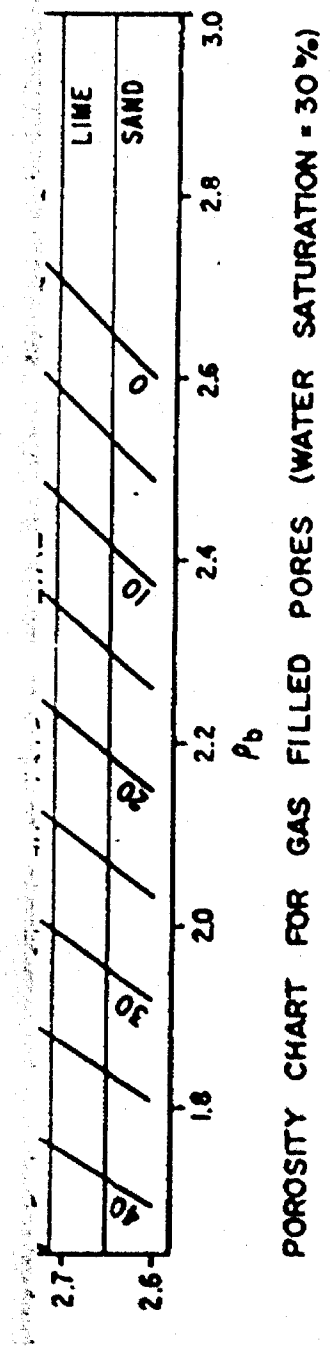
**GAUPE**  
Average Diameter in.  
0 100 200

**GAMMA**  
Average Density in.  
0 100 200

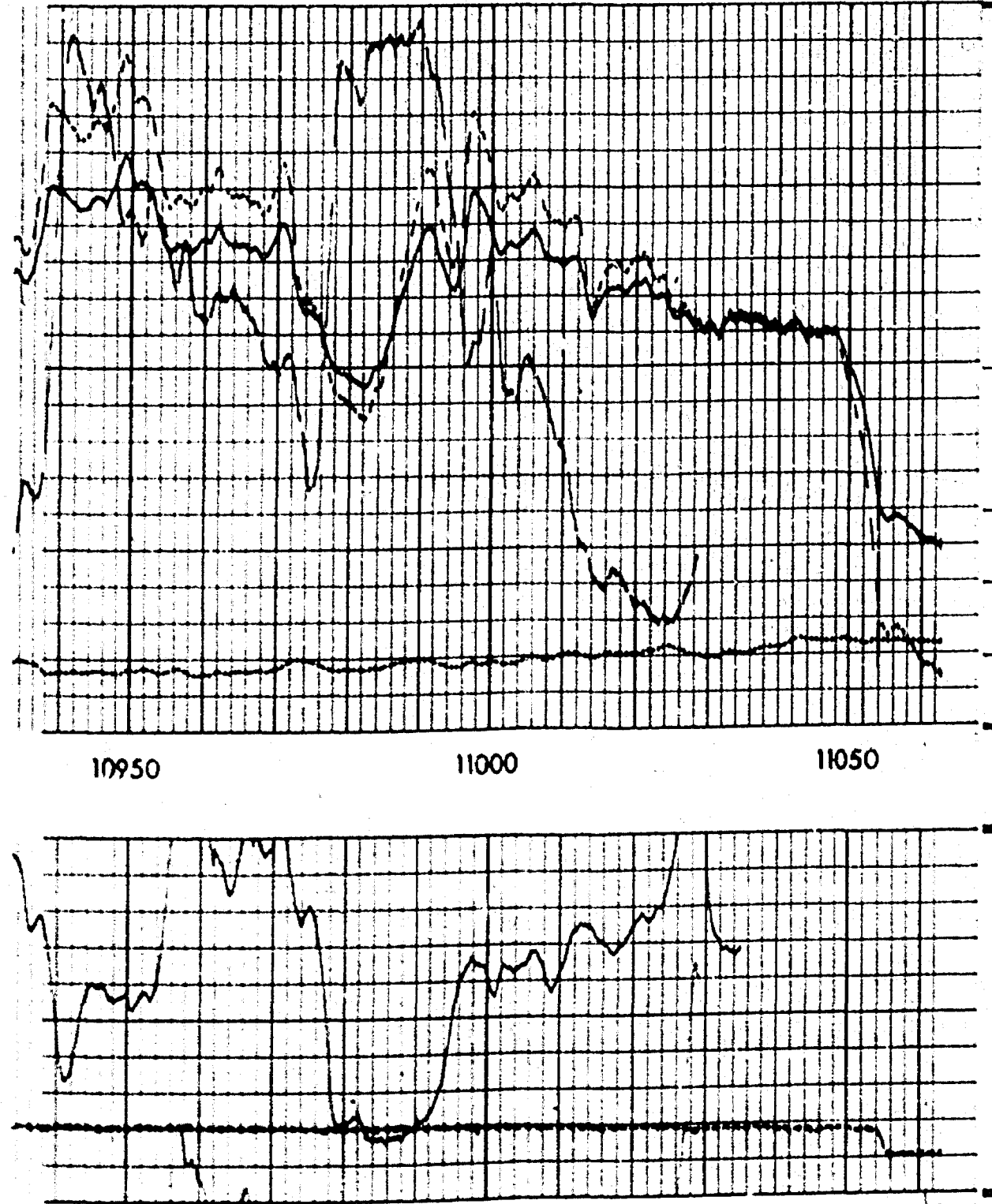
Perce Oil Corporation  
4115th St. Comb. # 1  
Bdry County, New Mexico

12.0000 11.054  
12.0000 11.050  
12.0000 11.055





REPEAT SECTION



6"	15"
CORRECTION (gram/cc)	
0.00	0.00
0.05	0.05
0.10	0.10
0.15	0.15
0.20	0.20
0.25	0.25
0.30	0.30
0.35	0.35
0.40	0.40
0.45	0.45
0.50	0.50
0.55	0.55
0.60	0.60
0.65	0.65
0.70	0.70
0.75	0.75
0.80	0.80
0.85	0.85
0.90	0.90
0.95	0.95
1.00	1.00
1.05	1.05
1.10	1.10
1.15	1.15
1.20	1.20
1.25	1.25
1.30	1.30
1.35	1.35
1.40	1.40
1.45	1.45
1.50	1.50
1.55	1.55
1.60	1.60
1.65	1.65
1.70	1.70
1.75	1.75
1.80	1.80
1.85	1.85
1.90	1.90
1.95	1.95
2.00	2.00
2.05	2.05
2.10	2.10
2.15	2.15
2.20	2.20
2.25	2.25
2.30	2.30
2.35	2.35
2.40	2.40
2.45	2.45
2.50	2.50
2.55	2.55
2.60	2.60
2.65	2.65
2.70	2.70
2.75	2.75
2.80	2.80
2.85	2.85
2.90	2.90
2.95	2.95
3.00	3.00

6" CALIPER  
Average Diameter, in.  
0 100 200

**GAMMA**  
AJT Gamma Ray Dens  
1.00 1.50 2.00

POROSIITY (%)  $P_g = 2.85 \times 2.71$

BULK DENSITY  
Correct (cc) (where  $\rho = 0.5$ )

PROBE OIL CORRECTION:  
Allen 10" Conn. # 1  
850' County, New Mexico  
TA LOGGED 11,554'  
TA DRIER 11,050'  
TA WALKER 11,055'

CALIBRATION

