

Case No  
5777

Large Exhibits

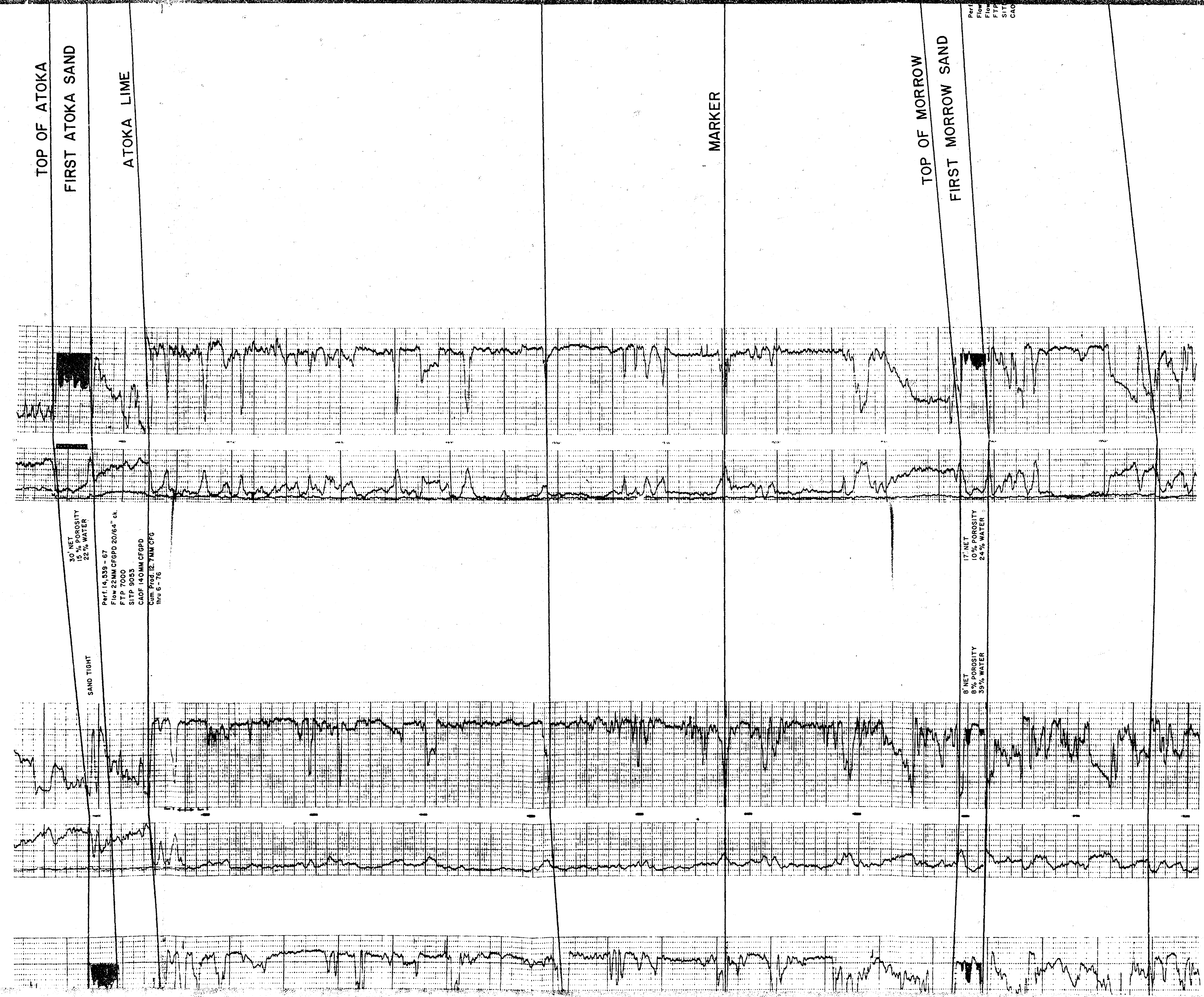
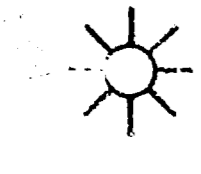
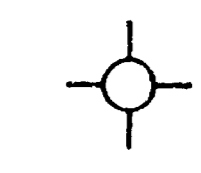




COMPANY  
E UNIT 9

CAROLINE HUNT SANDS  
NO. 1-8 TUBB ESTATE

SINCLAIR OIL & GAS COMPANY  
NO. 1 TUBB ESTATE UNIT 22



CROSS SECTION A - A

VERTICAL SCALE 2.5" = 100'  
HORIZONTAL SCALE 1" = 1000'

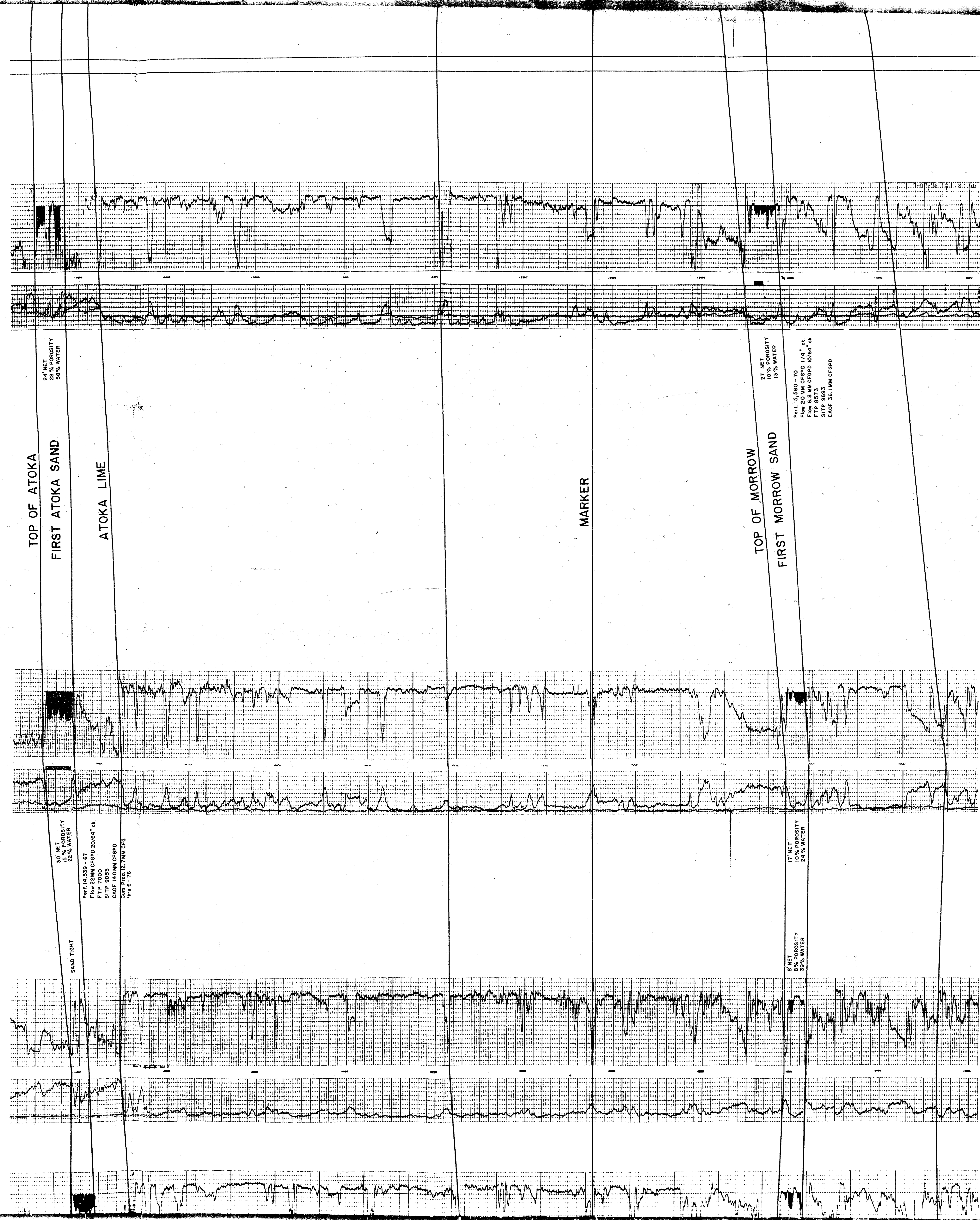
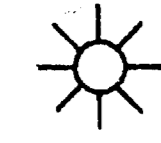
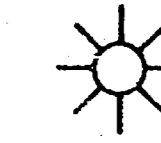
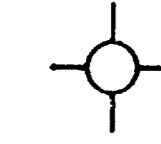


GIFFORD, MITCHELL & WISEBAKER  
NO. 1 COMANCHE UNIT

SINCLAIR OIL & GAS COMPANY  
NO. 1 TUBB ESTATE UNIT 22

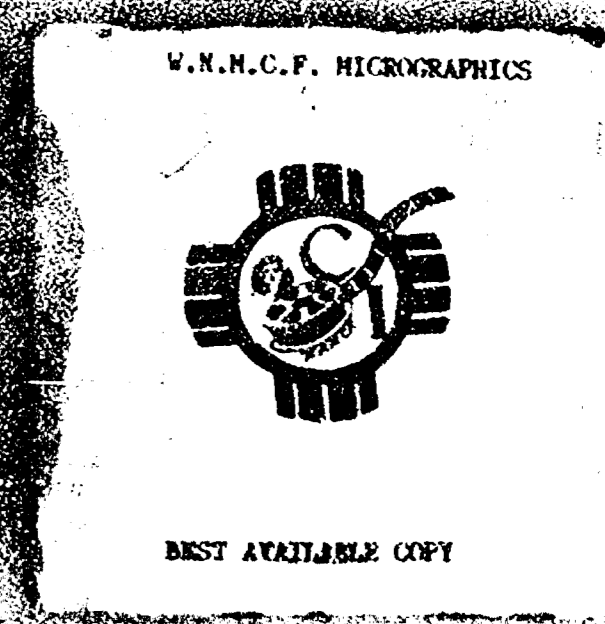
CAROLINE HUNT SANDS  
NO. 1-8 TUBB ESTATE

UNIT 9



CROSS SECTION A - A'

VERTICAL SCALE 2.5" = 100'  
HORIZONTAL SCALE 1" = 1000'



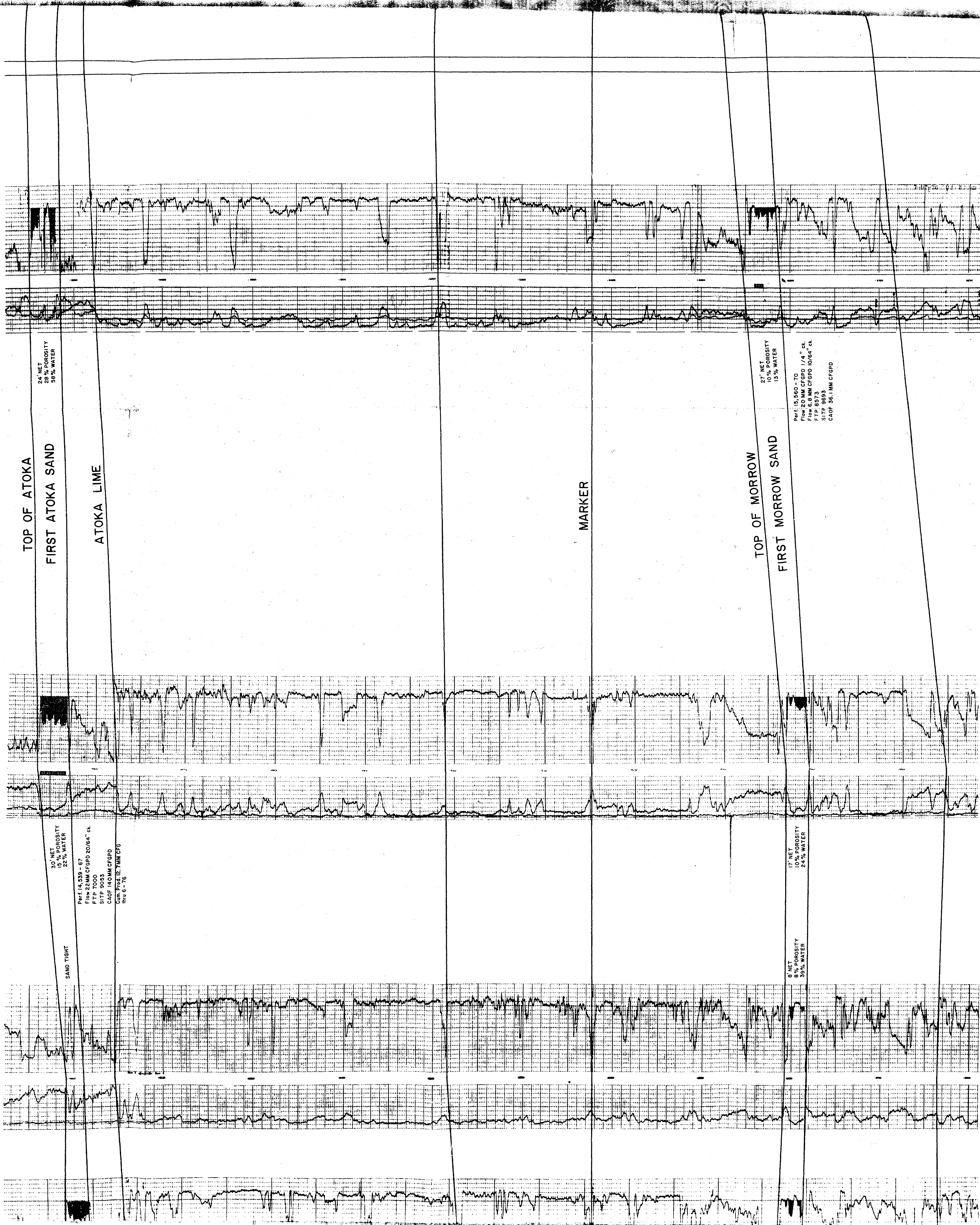
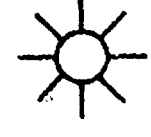
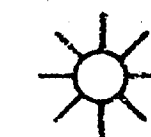
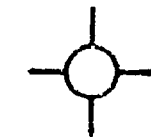
COMPANY

CAROLINE HUNT SANDS  
NO. 1-8 TUBB ESTATE

SINCLAIR OIL & GAS COMPANY  
NO. 1 TUBB ESTATE UNIT 22

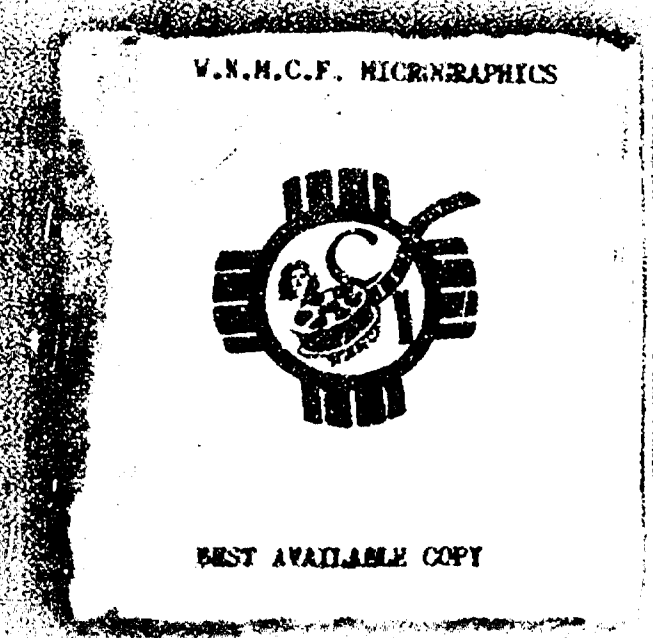
GIFFORD, MITCHELL & WISEBAKER  
NO. 1 COMANCHE UNIT

GIFFORD, MITCHELL & WISEBAKER  
NO. 1 HORSE BACK UNIT



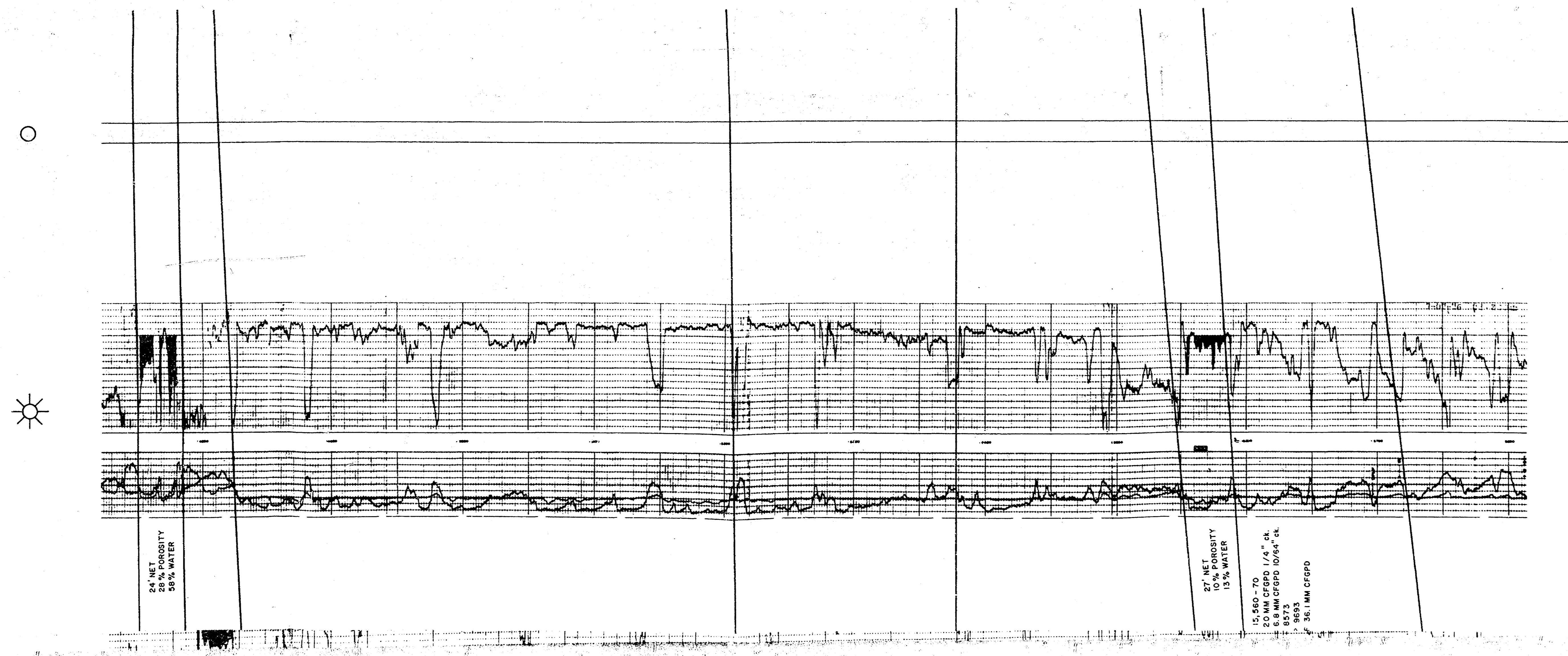
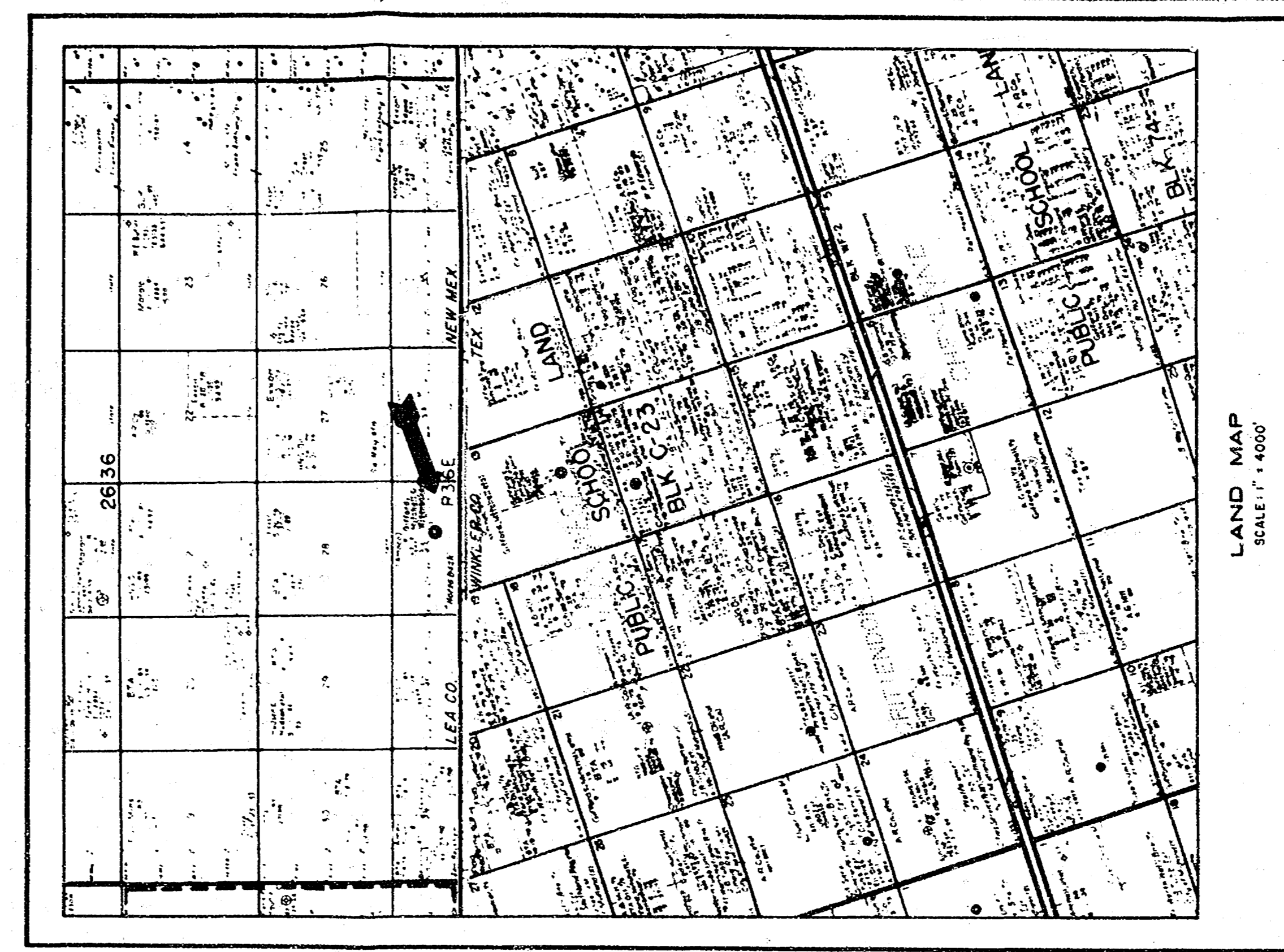
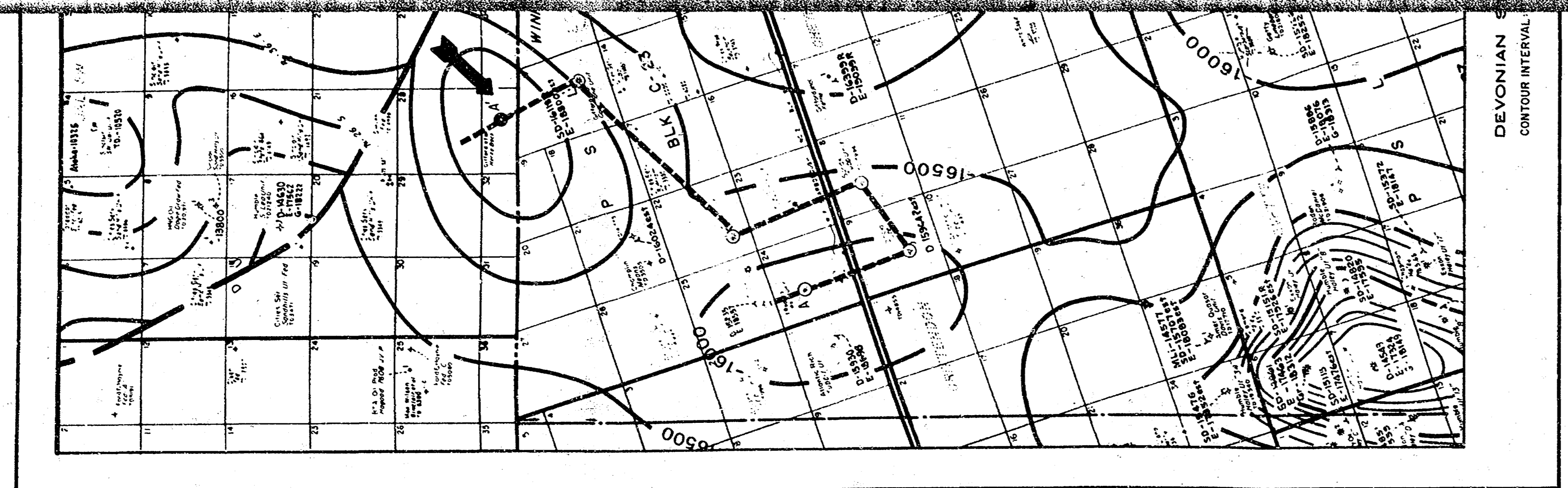
CROSS SECTION A - A'

VERTICAL SCALE: 2.5" = 100'  
HORIZONTAL SCALE: 1" = 1000'



GIFFORD, MITCHELL & WISEBAKER  
NO. 1 COMANCHE UNIT

A'



24" NET  
20% POROSITY  
50% WATER

27" NET  
10% POROSITY  
15% WATER

15.860 - 20  
20 MM CFSPD 1/4" dia  
6.8 MM CFSPD 10/64" dia  
9.933  
36.1 MM CFSPD

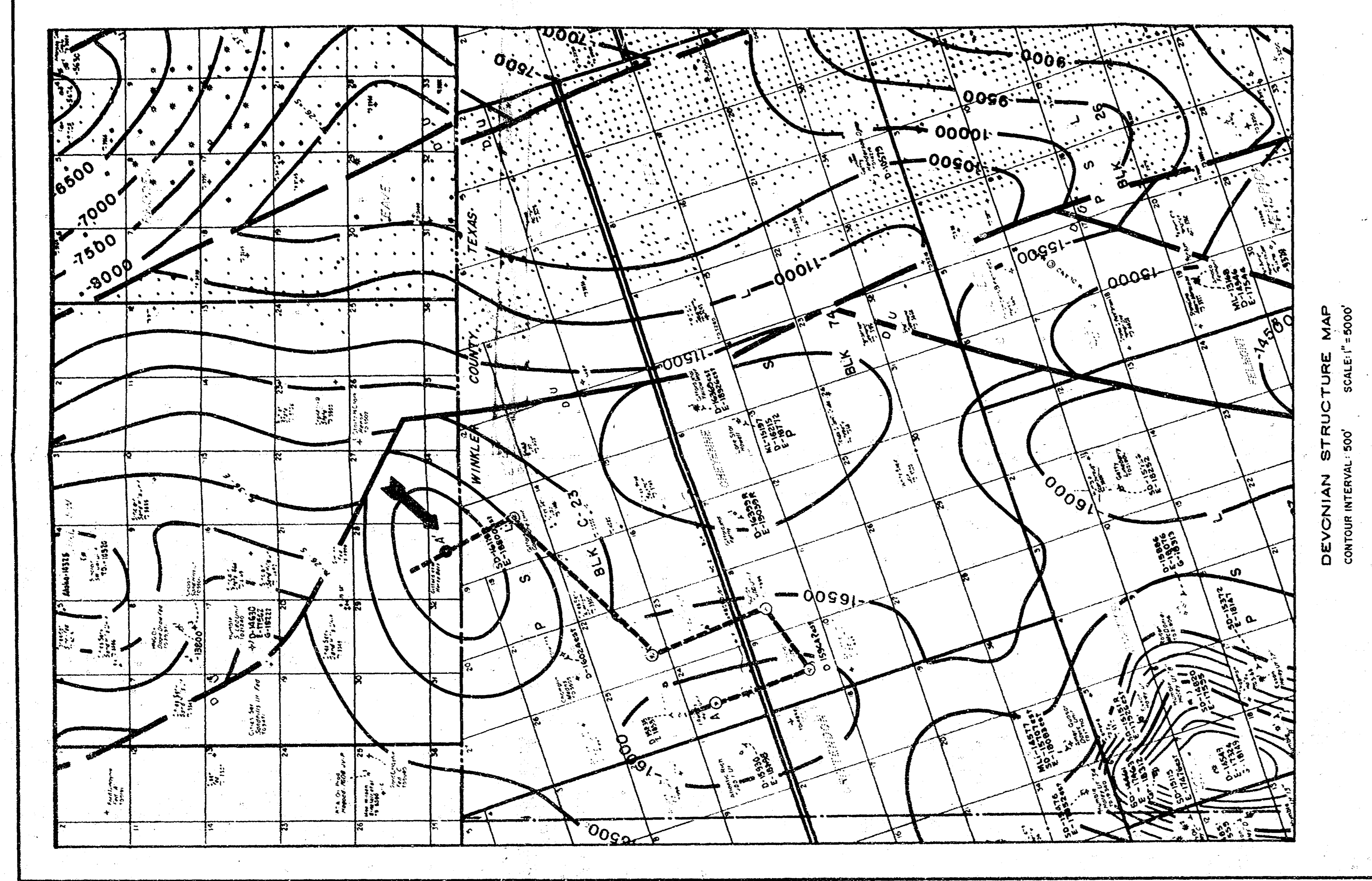
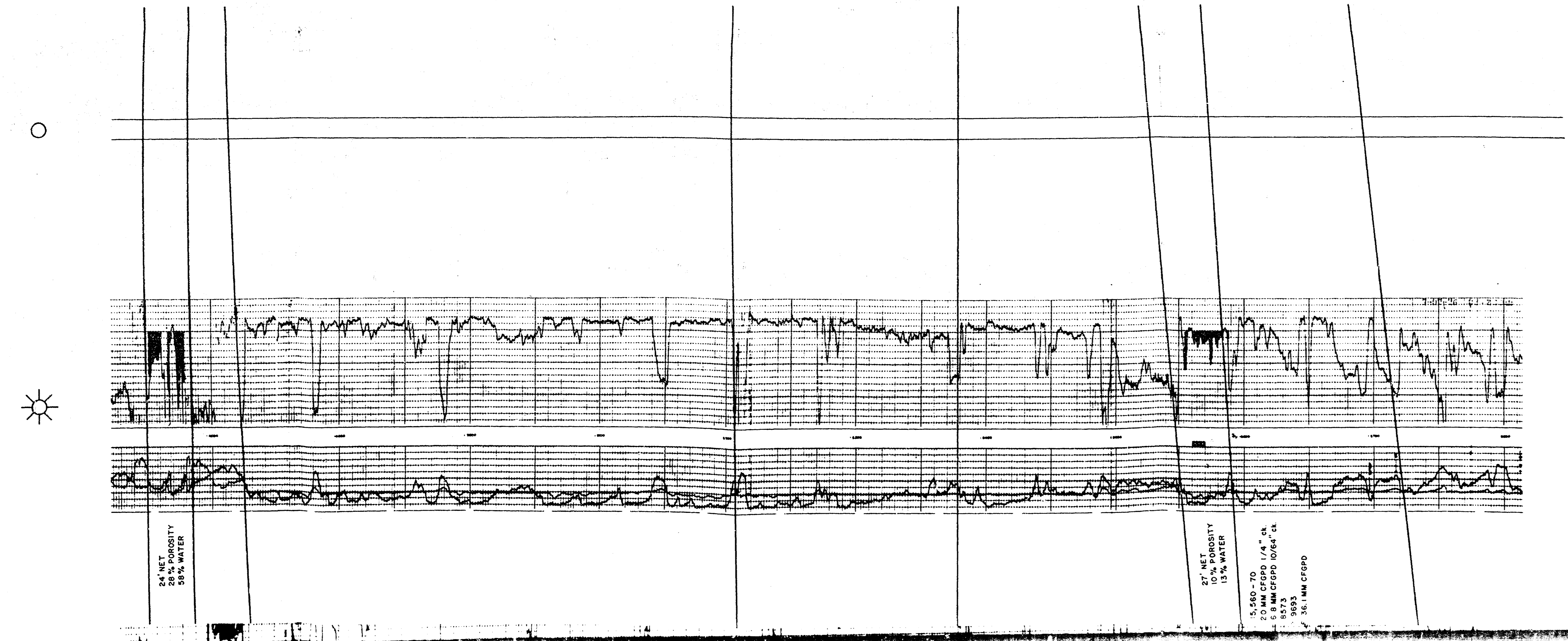
W.M.C.F. MICROGRAPHS



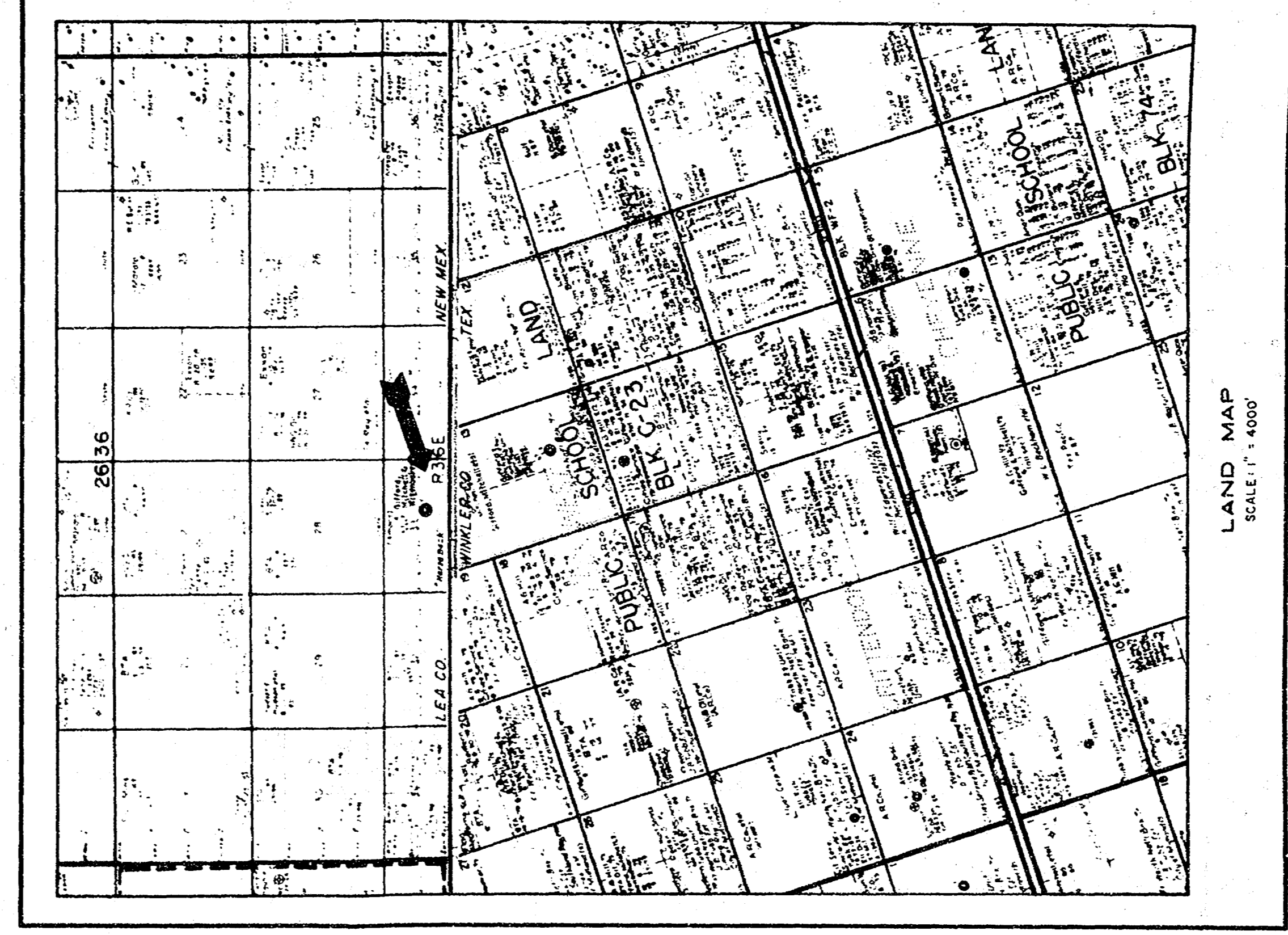
BEST AVAILABLE COPY

GIFFORD, MITCHELL & WISEBAKER  
 NO. 1 COMANCHE UNIT

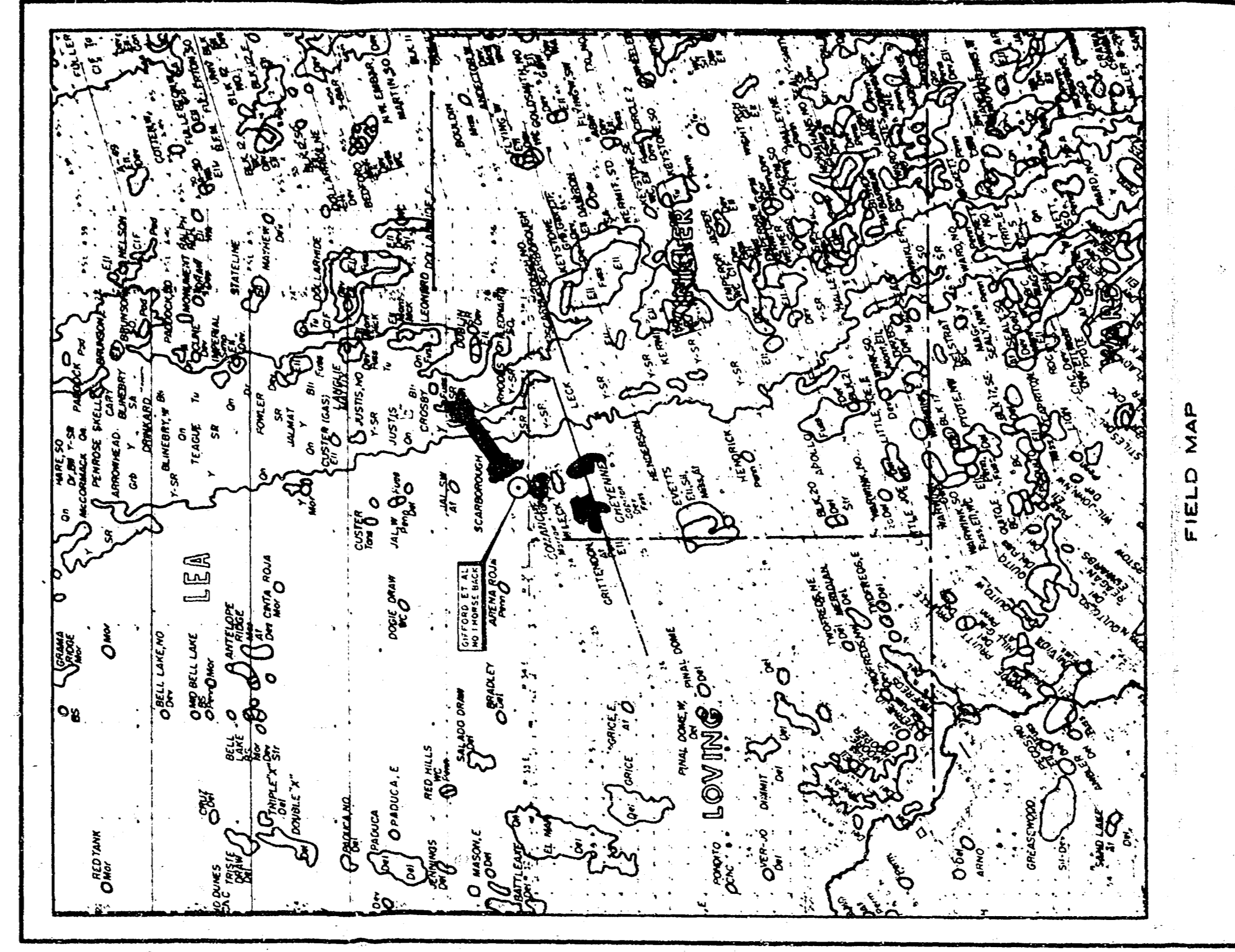
A'



DEVONIAN STRUCTURE MAP  
 CONTOUR INTERVAL 500 SCALE 1" = 5000'



LAND MAP  
 SCALE 1" = 4000'



FIELD MAP

**COMANCHE AREA**  
 WINKLER COUNTY, TEXAS - LEA COUNTY, NEW MEXICO  
 GIFFORD, MITCHELL & WISEBAKER

