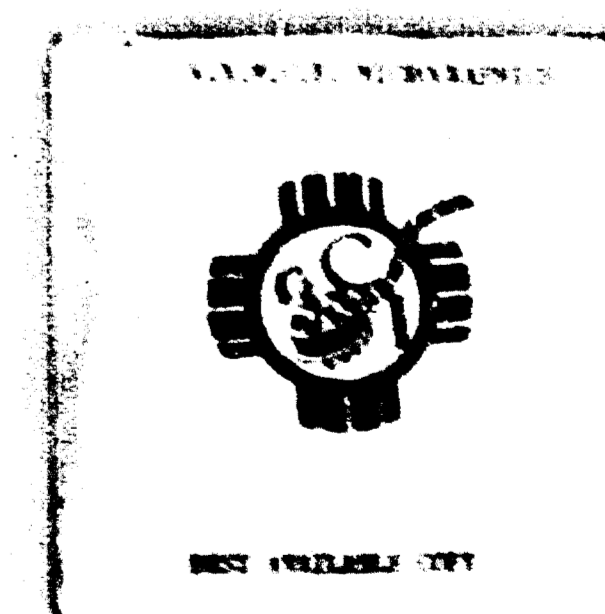
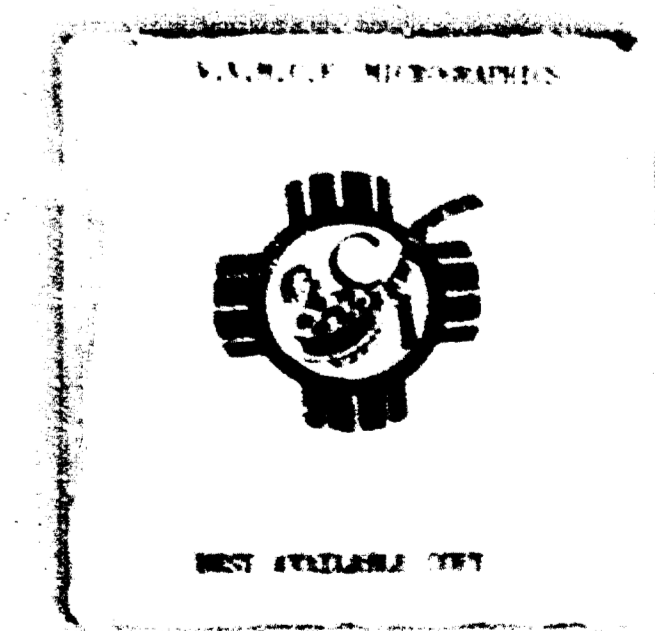
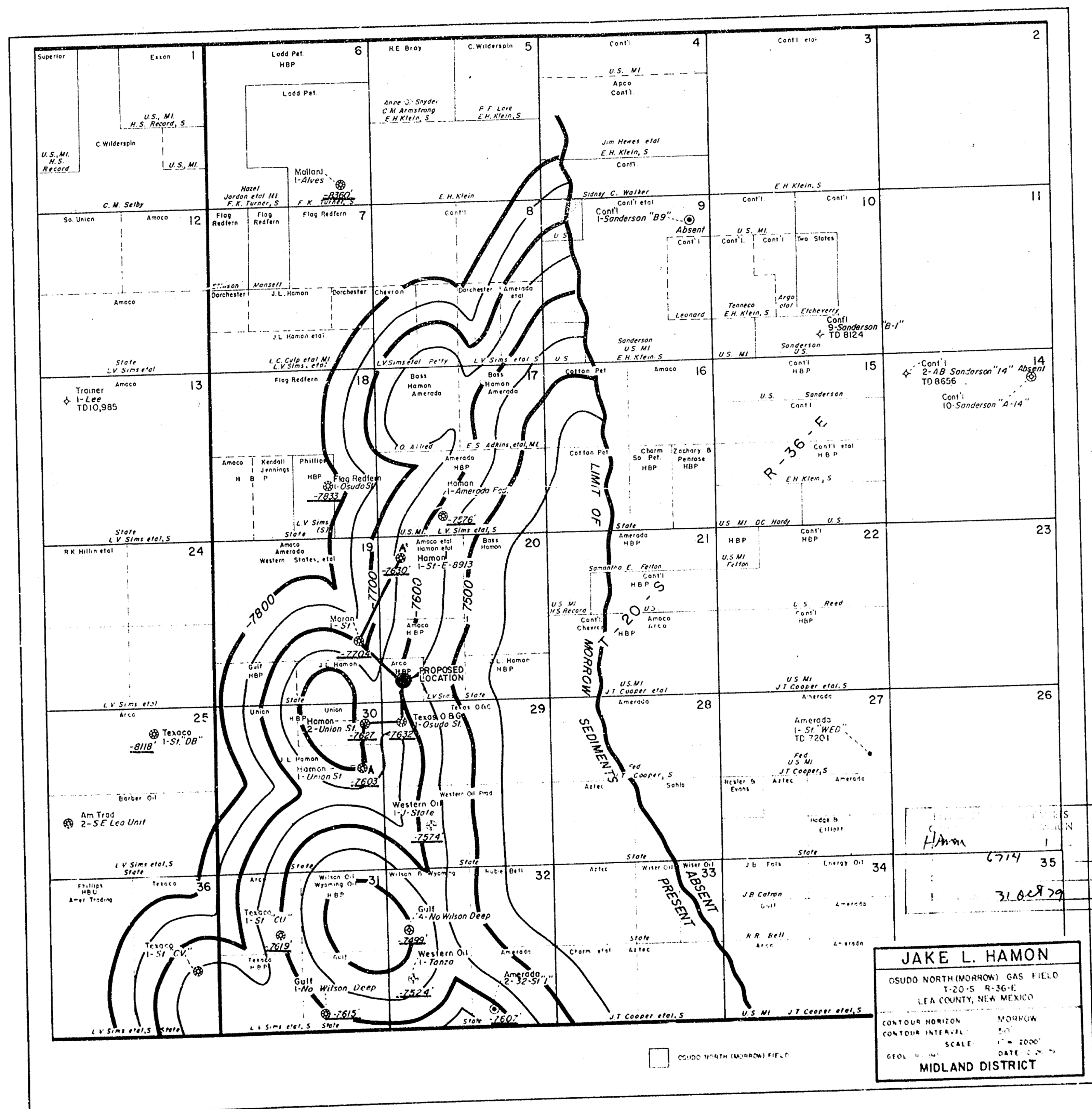
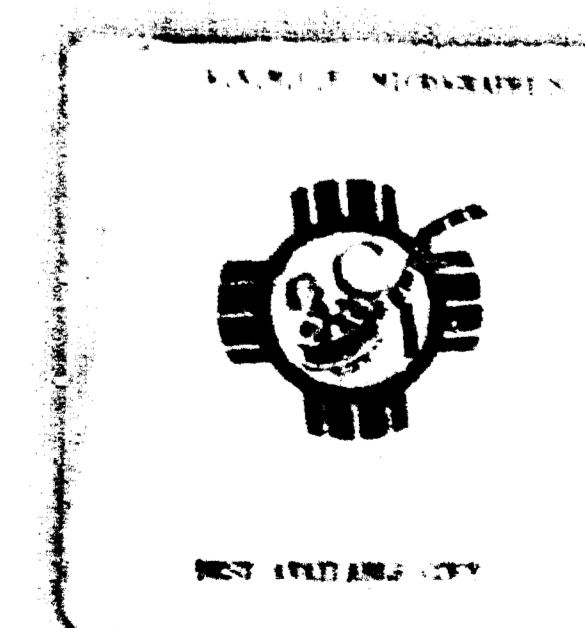
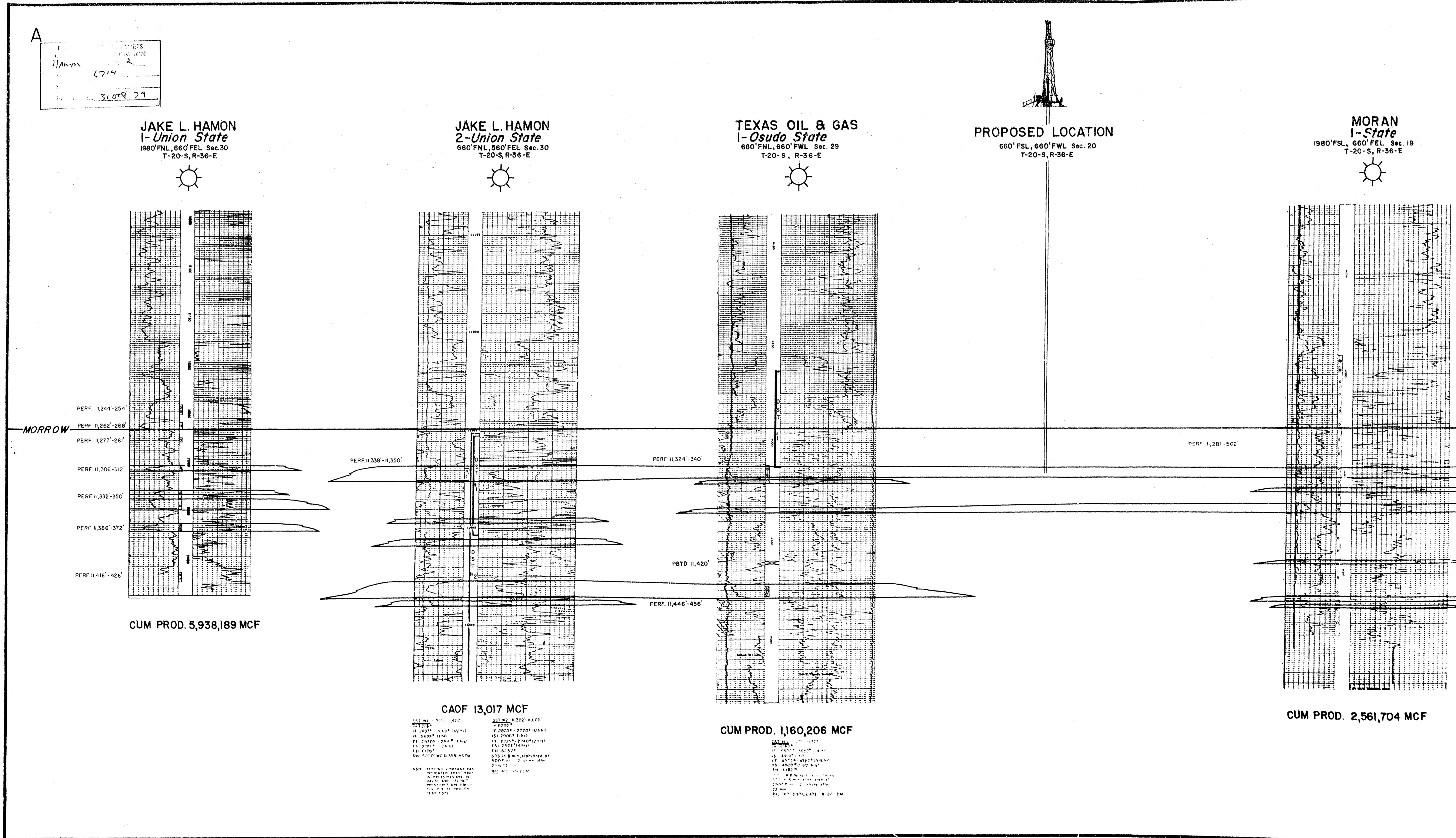


Case No
6714

Large Exhibits







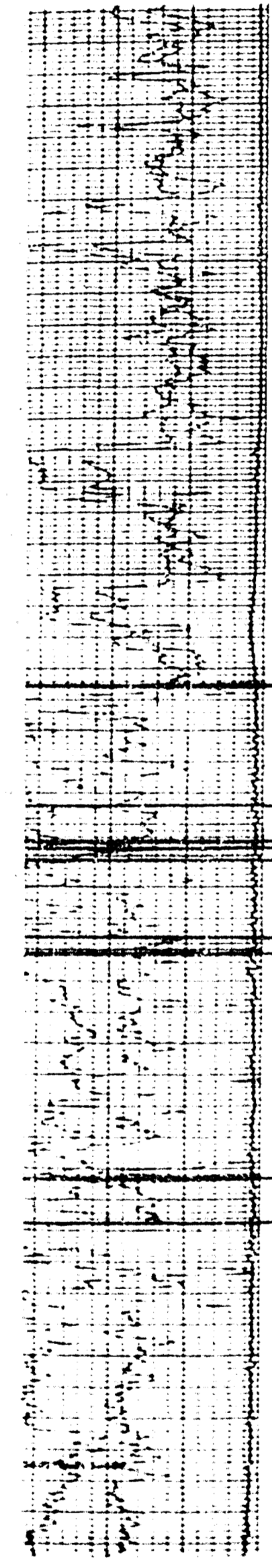
A'

L B GAS
i-*State*
ML Sec 29
-36-E

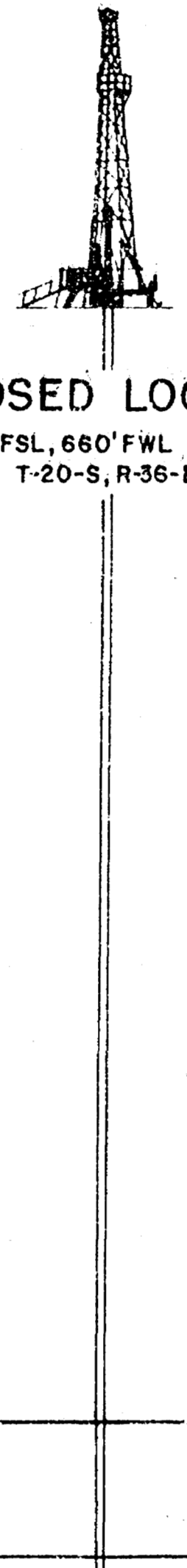
PROPOSED LOCATION
660' FSL, 660' FWL Sec. 20
T-20-S, R-36-E

MORAN
i-*State*
1980' FSL, 660' FWL Sec. 19
T-20-S, R-36-E

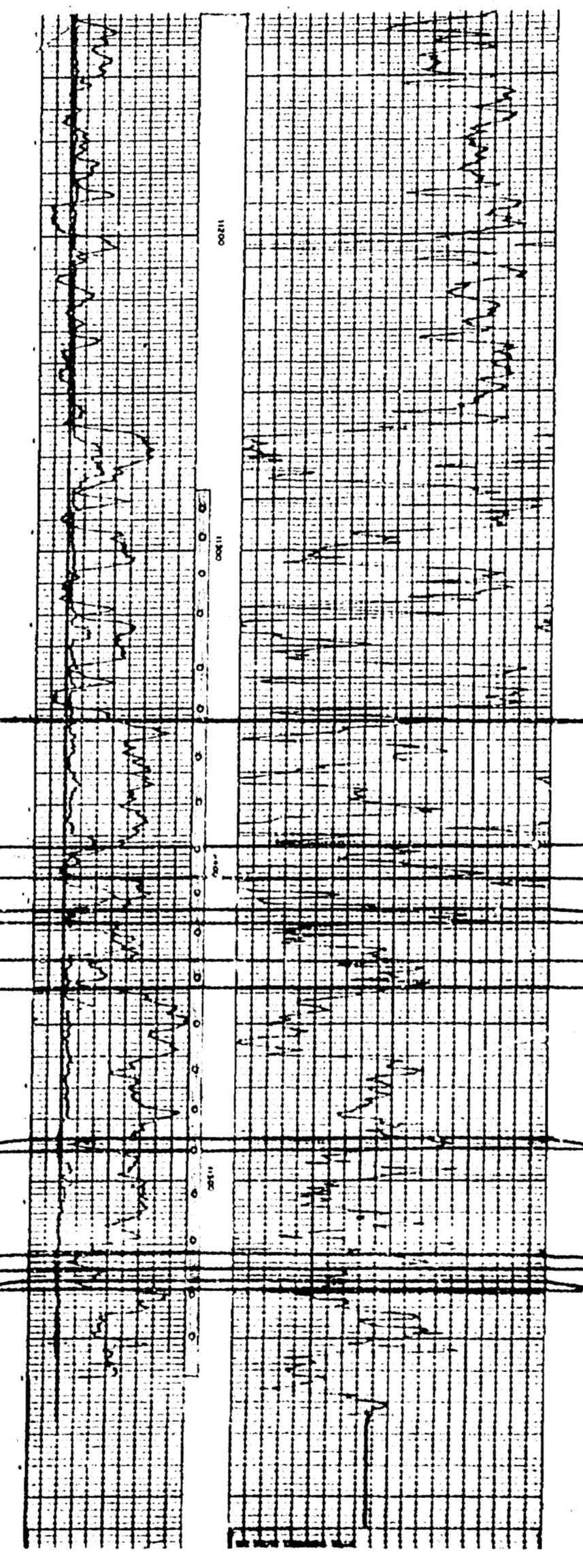
JAKE L. HAMON
i-*State* E-8913
660' FSL, 660' FWL Sec. 20
T-20-S, R-36-E



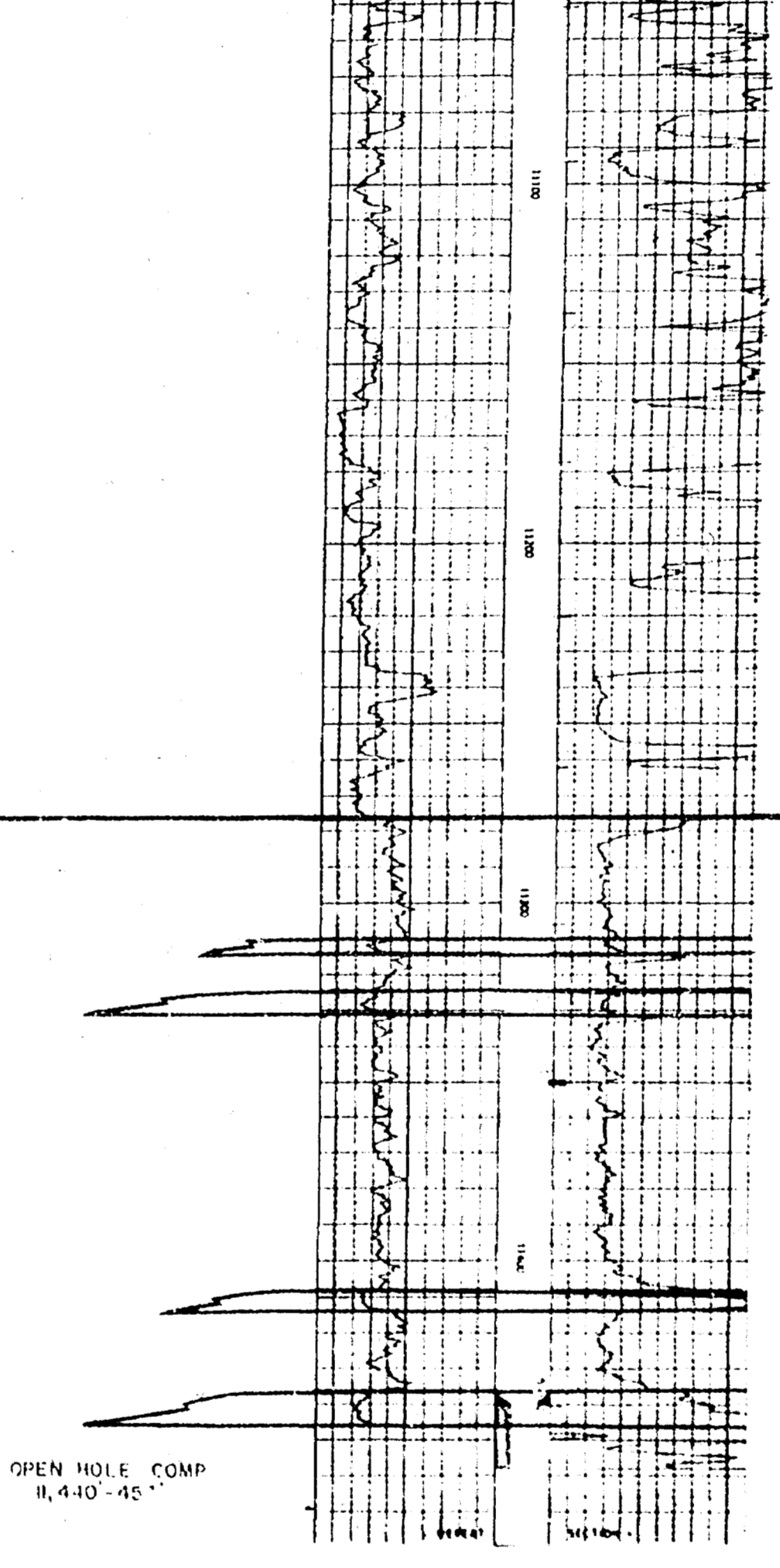
3,206 MCF



PERF 10,001-502'

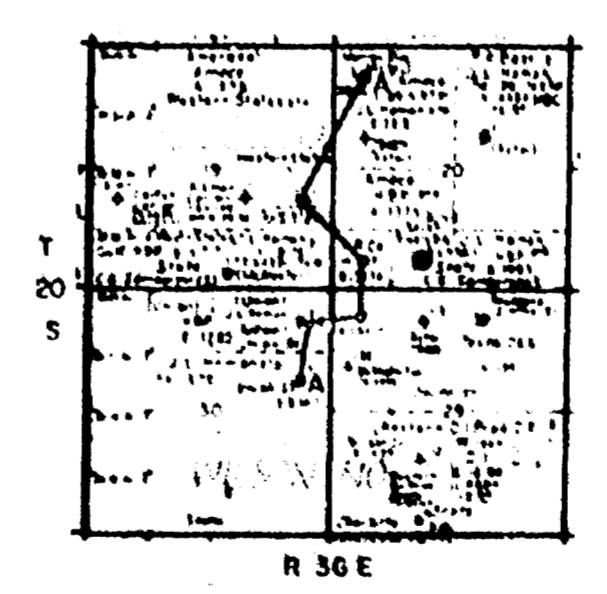


CUM PROD. 2,561,704 MCF

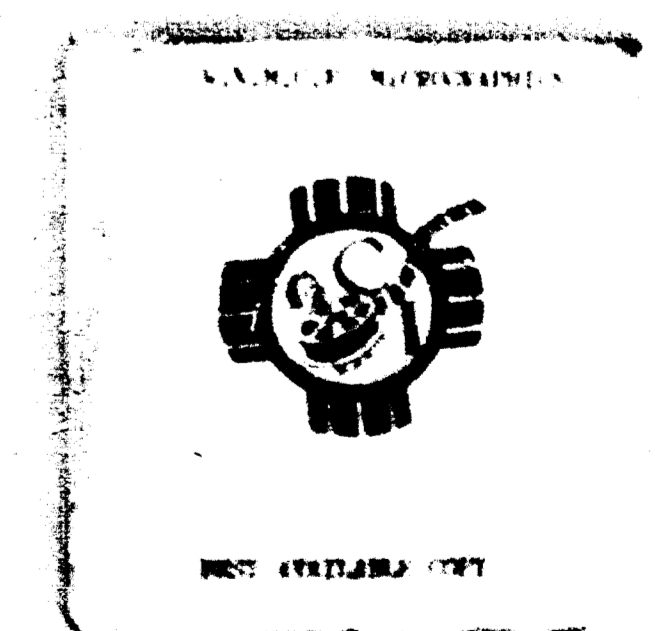


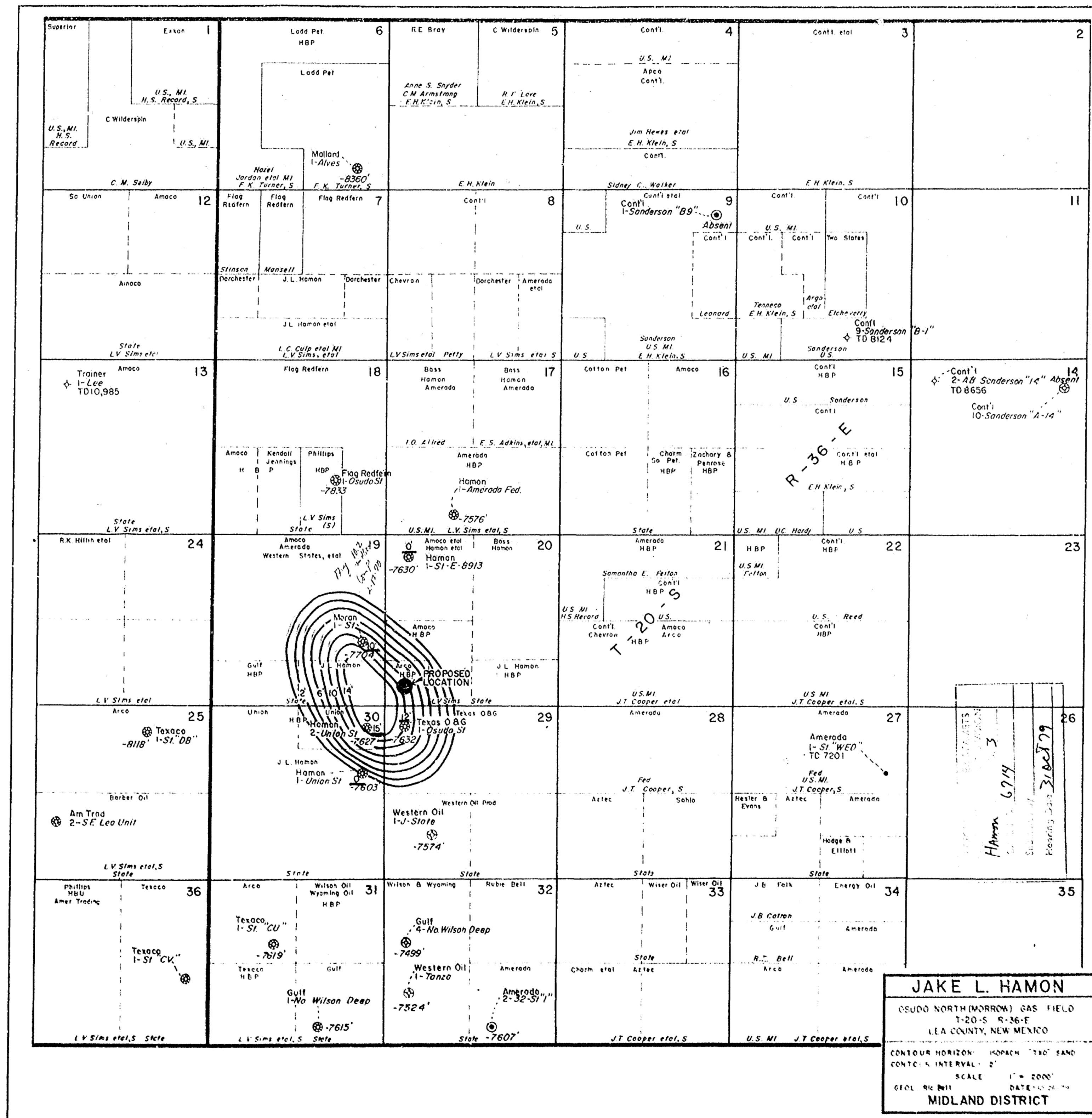
CUM PROD. 8,900,288 MCF

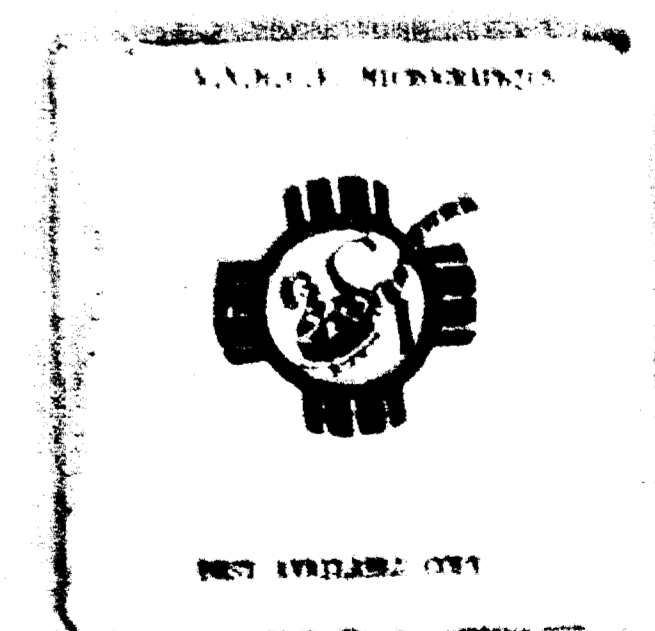
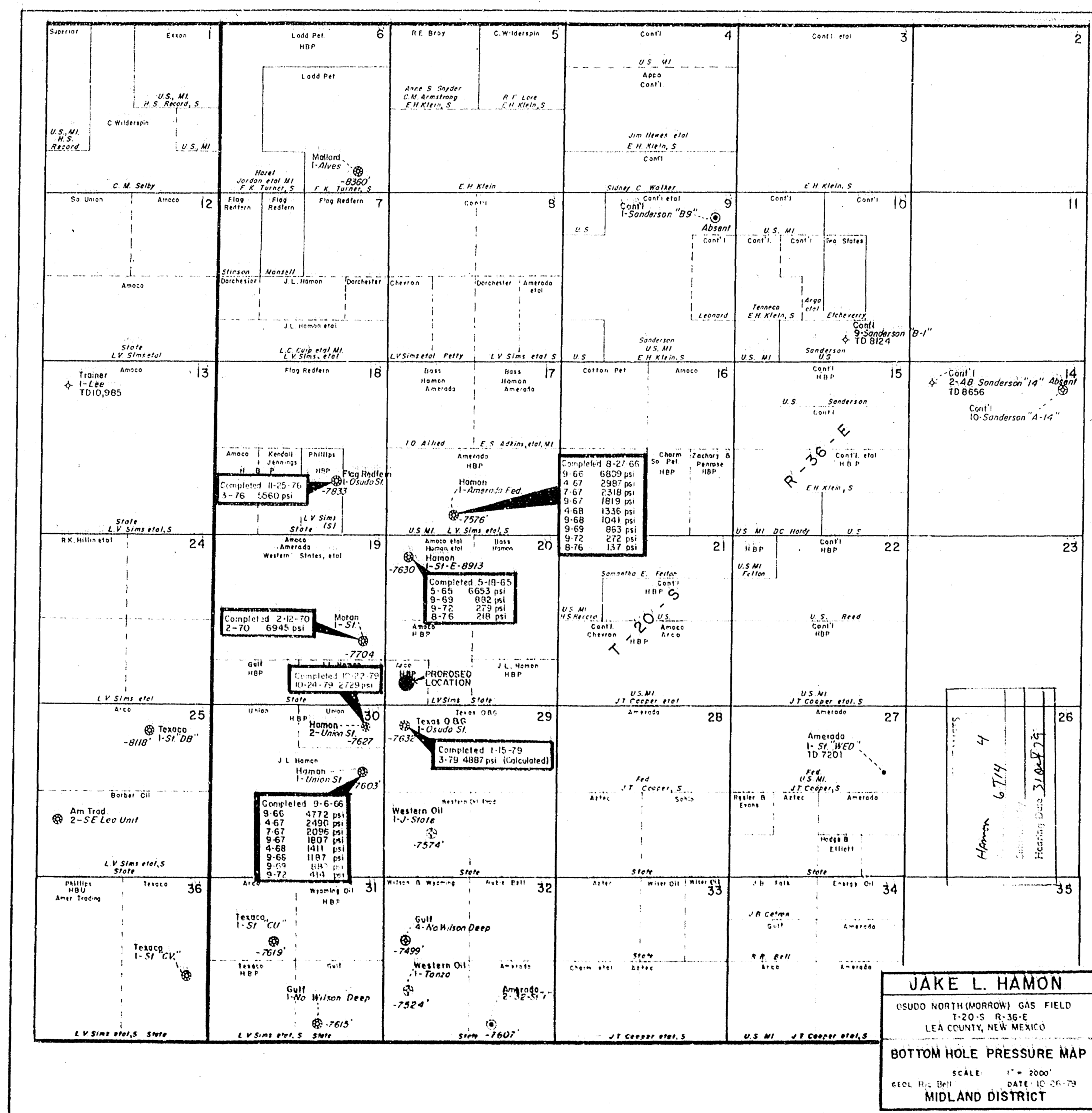
MORROW

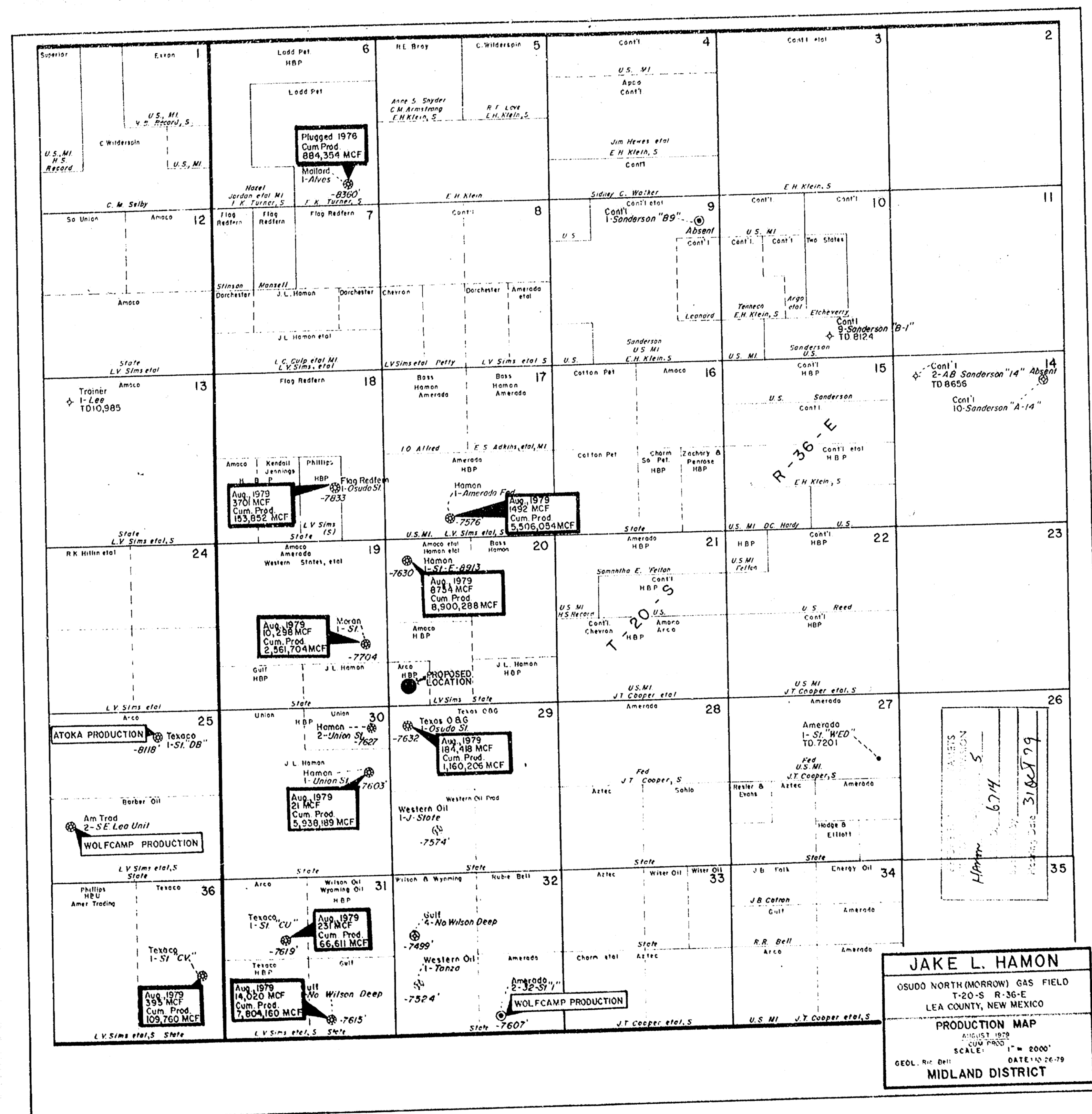


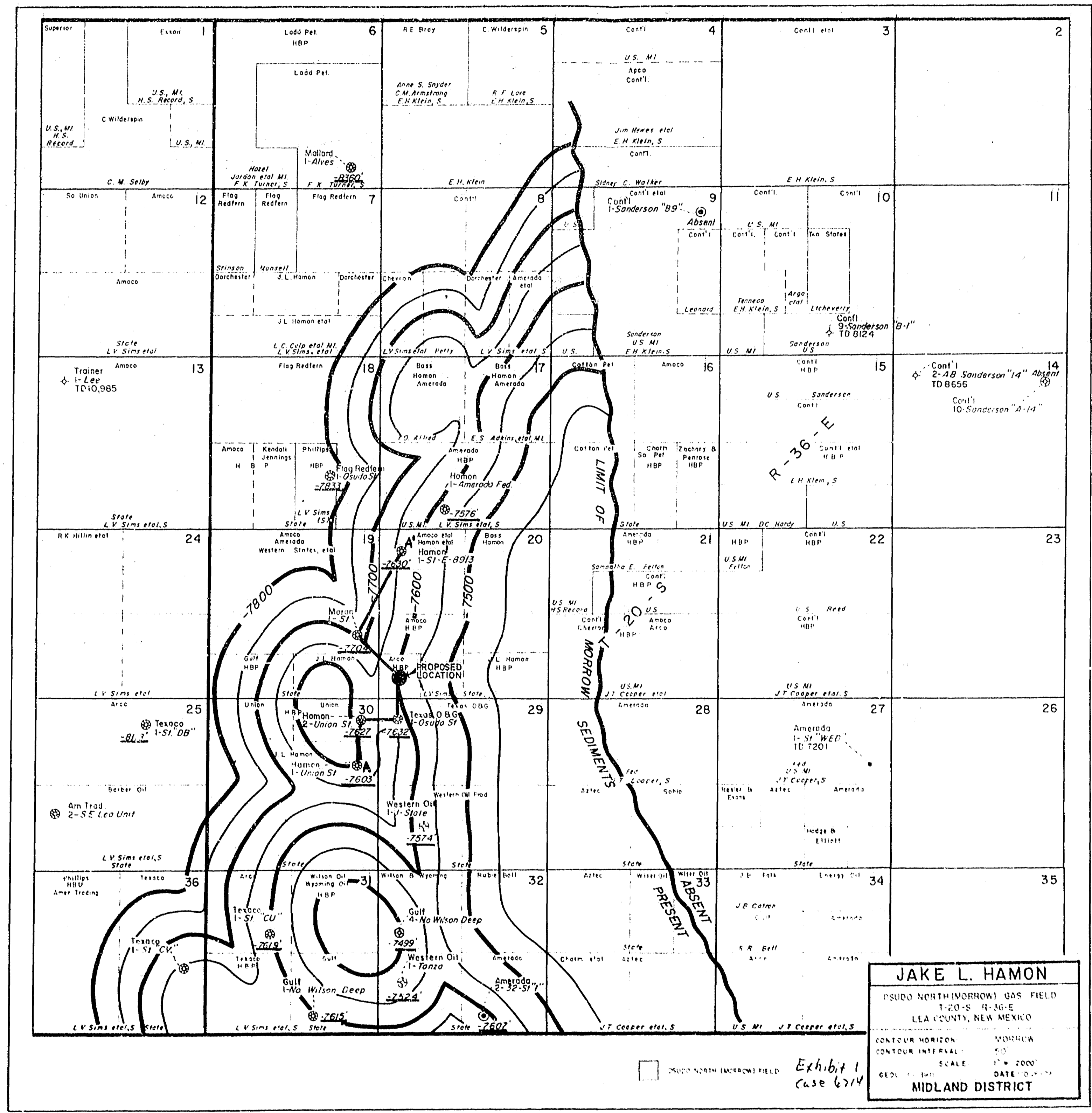
JAKE L. HAMON
MIDLAND DISTRICT
OSUDO NORTH
STRATIGRAPHIC X-SECTION
A-A'
T-20-S R-36-E
LEA COUNTY NEW MEXICO
Vert Scale: 2 1/2" = 100'
Horiz Scale: 1" = 300' Date: 10-26-79
Geol. Pl. Bull.





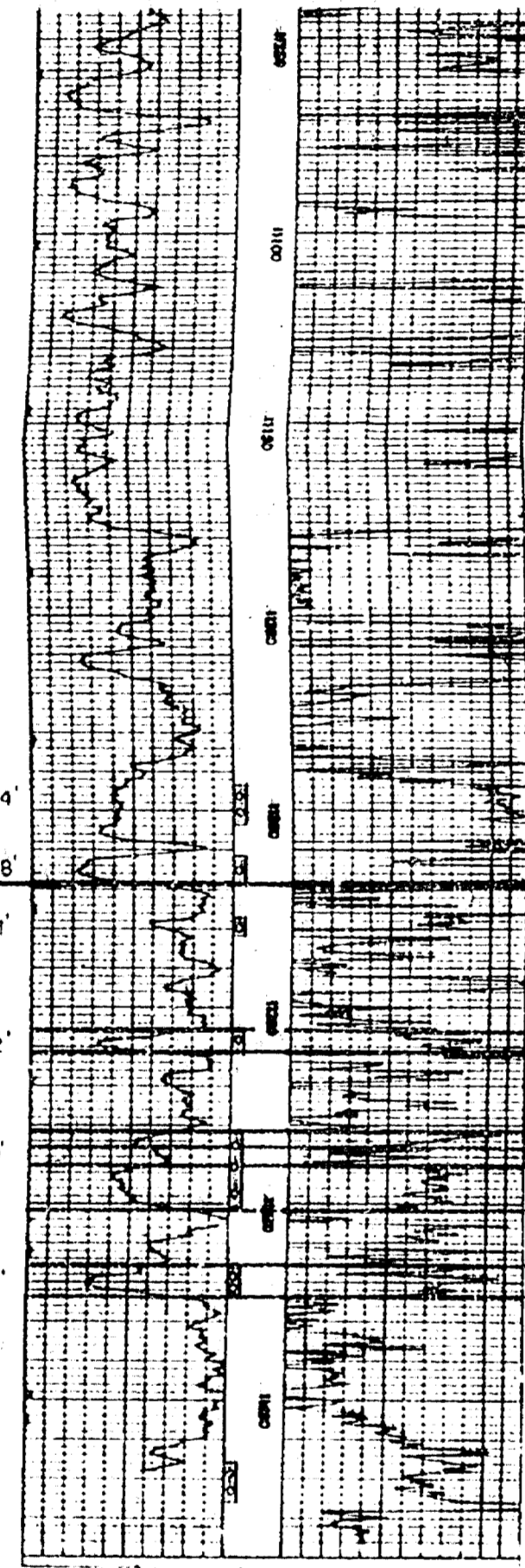






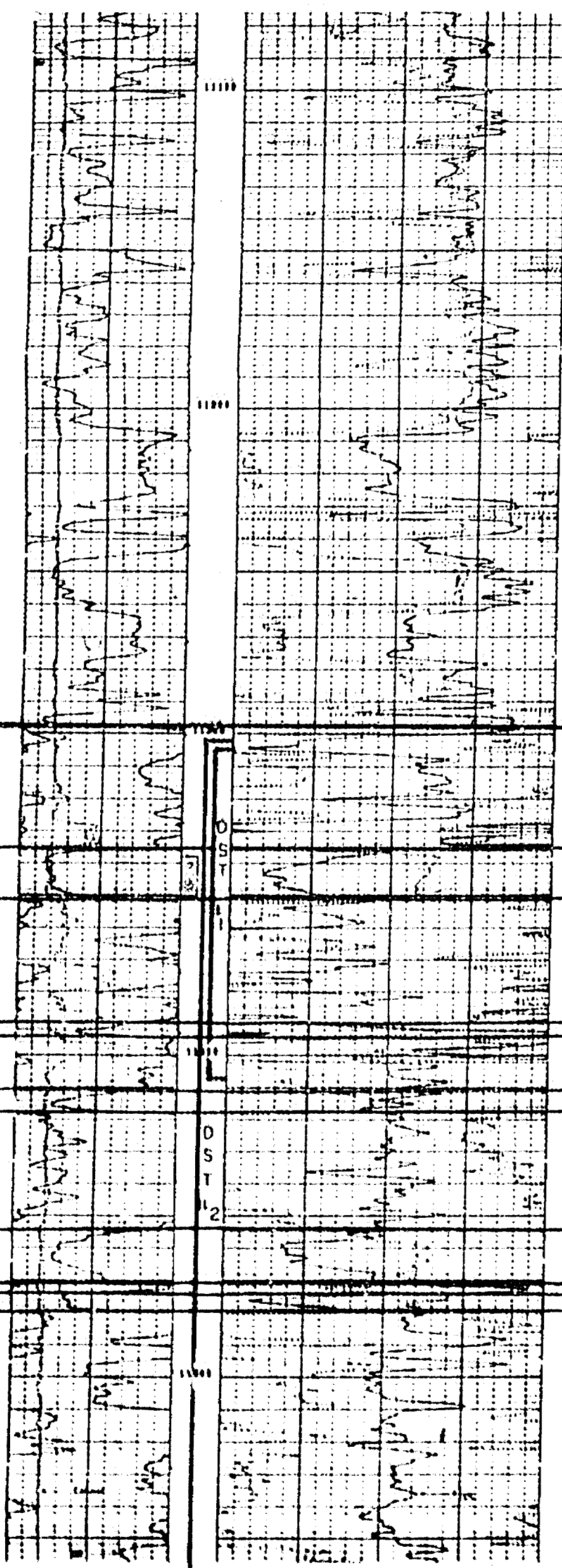
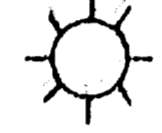
A

JAKE L. HAMON
1-Union State
1980'FNL, 680'FWL, Sec. 30
T-20-S, R-36-E



CUM PROD. 5,938,189 MCF

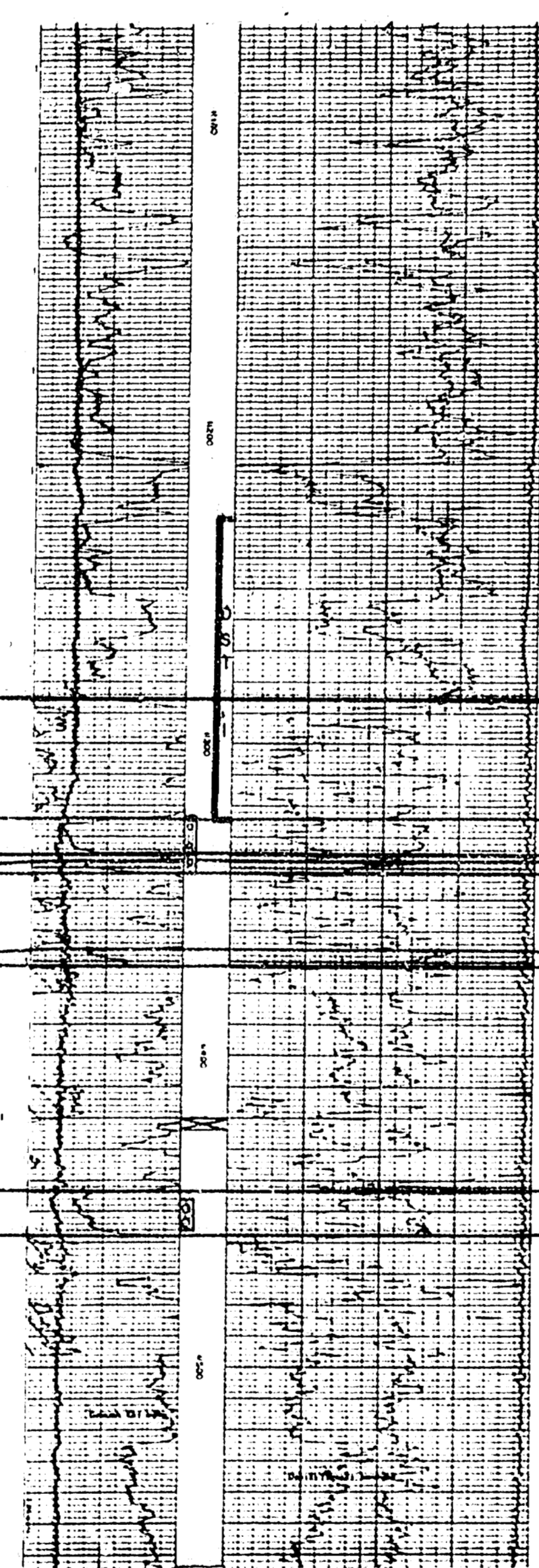
JAKE L. HAMON
2-Union State
680'FNL, 680'FWL, Sec. 30
T-20-S, R-36-E



CAOF 13,017 MCF

LOG NO. 11-11-11
DATE 11-11-11
WELL NO. 11-11-11
SECTION 30
T-20-S, R-36-E
11-11-11

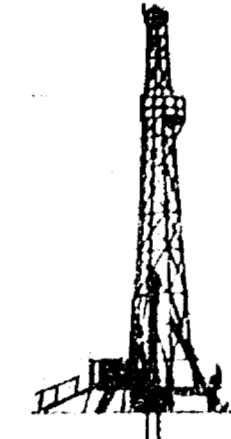
TEXAS OIL & GAS
1-Osuda State
680'FNL, 680'FWL, Sec. 29
T-20-S, R-36-E



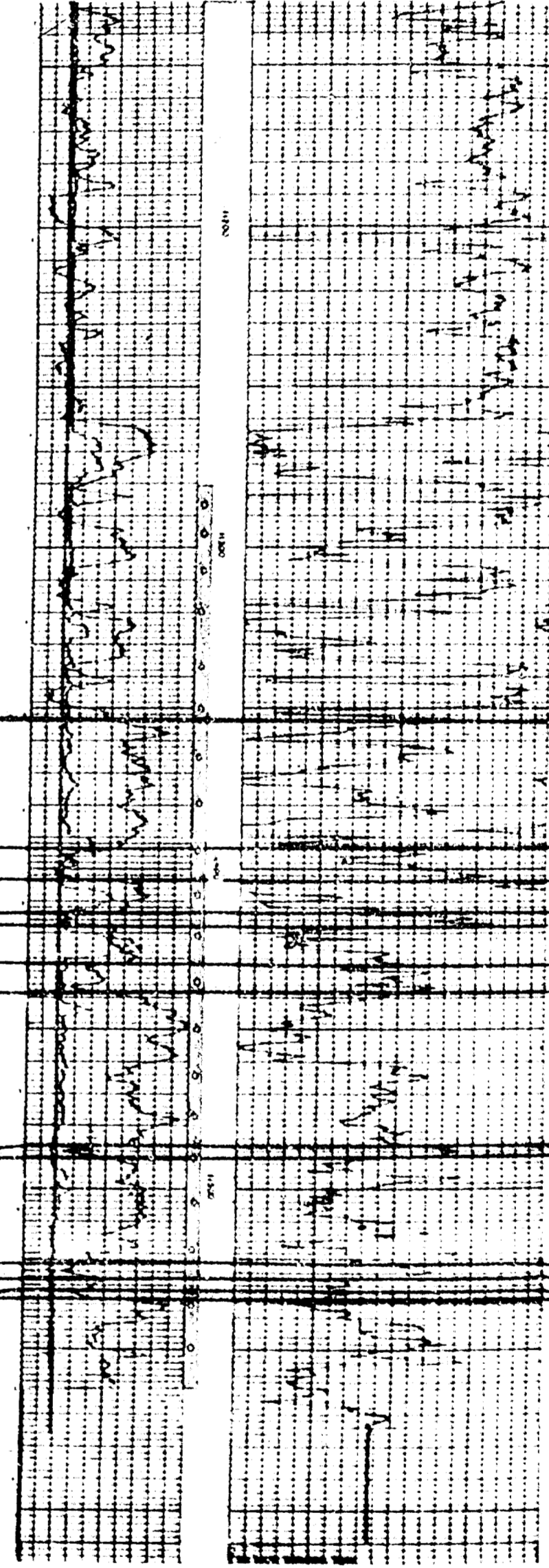
CUM PROD. 1,160,206 MCF

LOG NO. 11-11-11
DATE 11-11-11
WELL NO. 11-11-11
SECTION 29
T-20-S, R-36-E
11-11-11

PROPOSED LOCATION
680'FNL, 680'FWL, Sec. 20
T-20-S, R-36-E



MORAN
1-State
1980'FNL, 680'FWL, Sec. 19
T-20-S, R-36-E

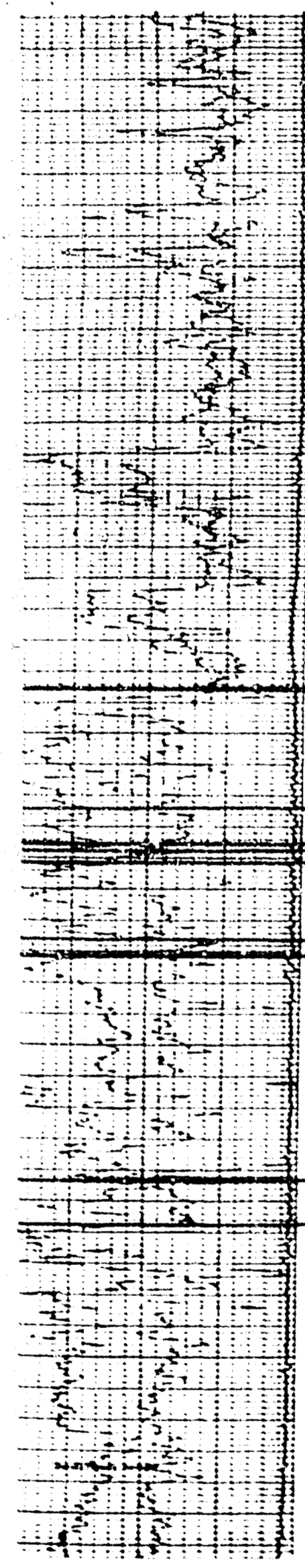
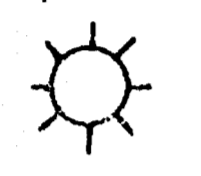


CUM PROD. 2,561,704 MCF



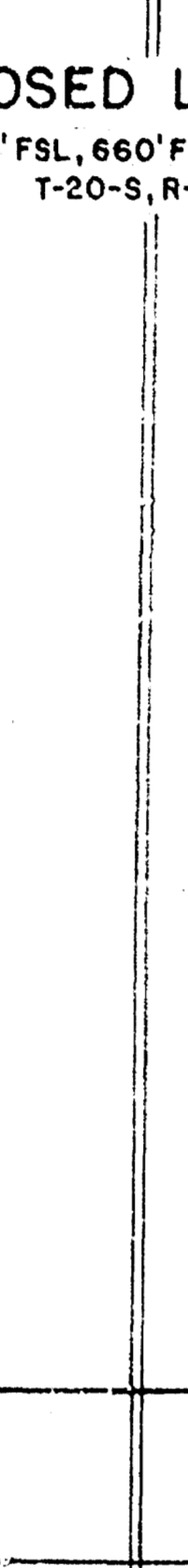
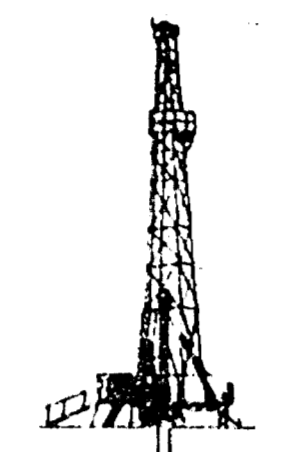
A'

OIL & GAS
State
0'FWL Sec. 29
R-36-E

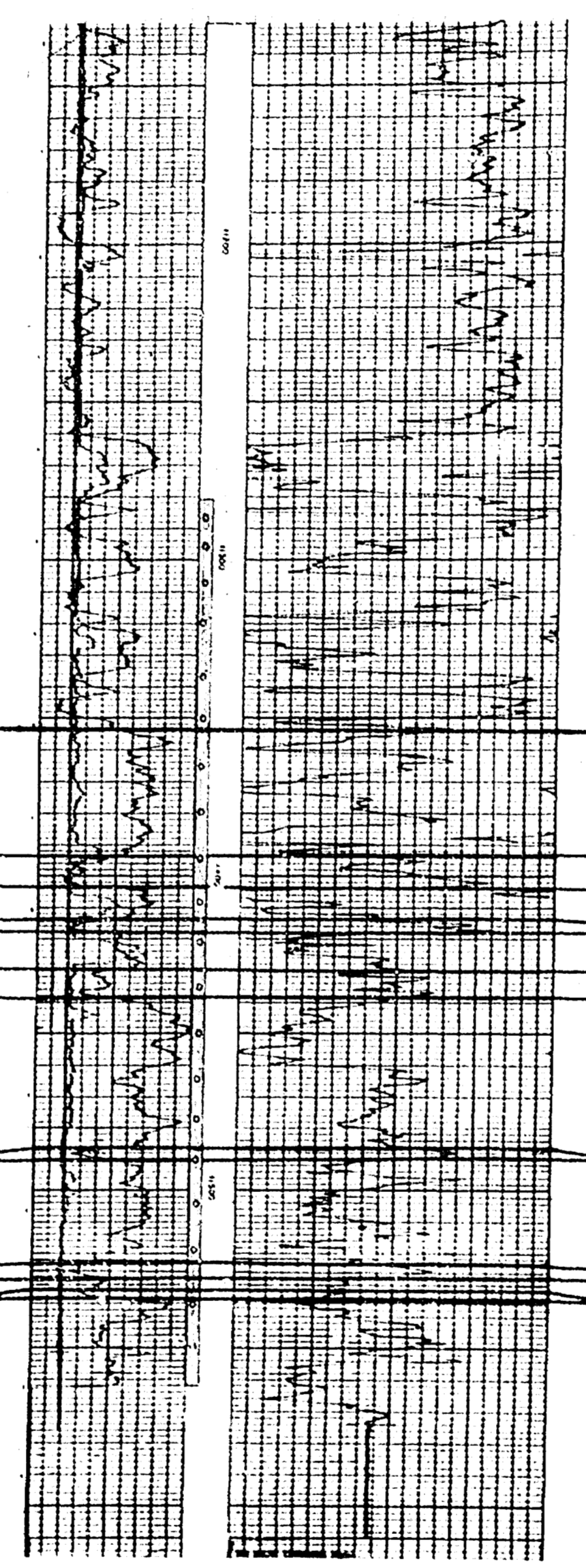
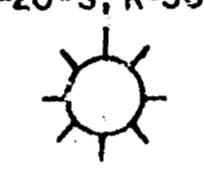


160,206 MCF

PROPOSED LOCATION
660'FWL, 660'FWL Sec. 20
T-20-S, R-36-E

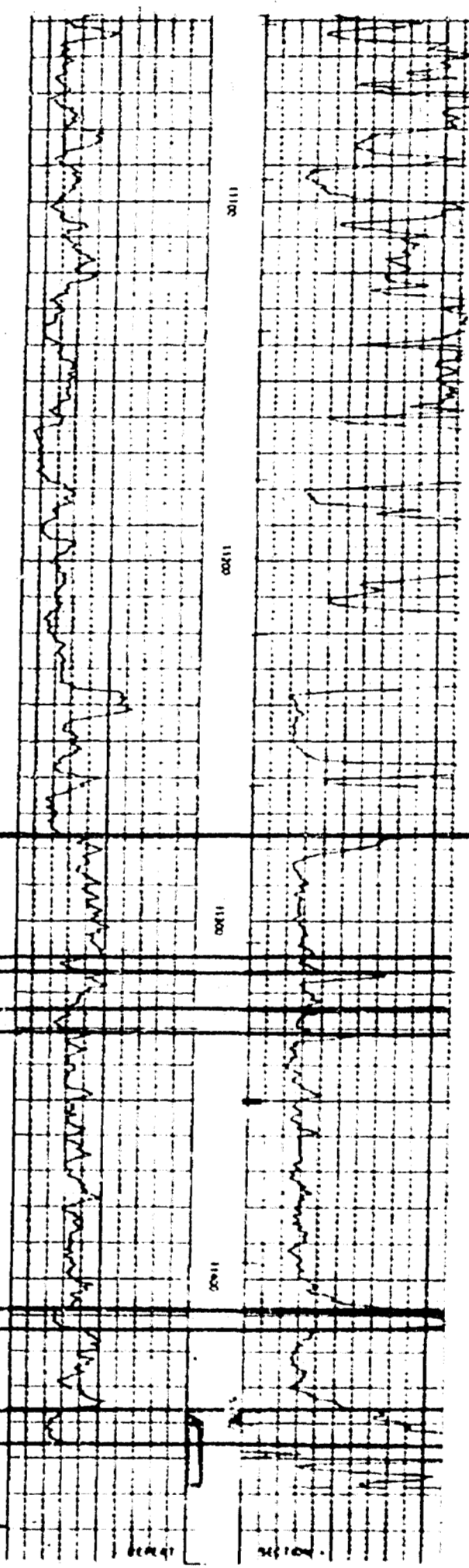
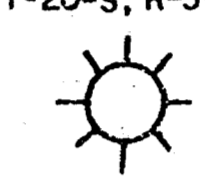


MORAN
1-State
1980'FWL, 660'FWL Sec. 19
T-20-S, R-36-E



CUM PROD. 2,561,704 MCF

JAKE L. HAMON
1-State E-8913
660'FWL, 660'FWL Sec. 20
T-20-S, R-36-E

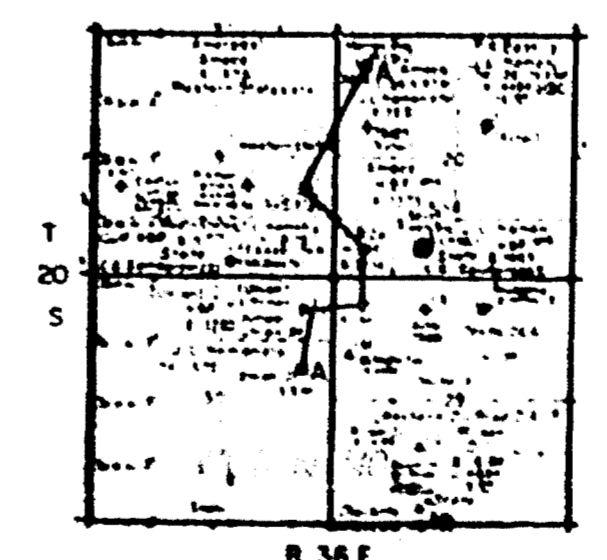


CUM PROD. 8,900,288 MCF

MORROW

OPEN HOLE COMP
1,410' - 65"

Exhibit 2
Case 6710



JAKE L. HAMON
MIDLAND DISTRICT

OSUDO NORTH
STRATIGRAPHIC X-SECTION
A-A'
T-20-S R-36-E
LEA COUNTY NEW MEXICO

Vert. Scale: 2 1/2" = 100'
Date: 10-26-79
Horiz. Scale: 1" = 300'
Geol. Ric. Bull.



