
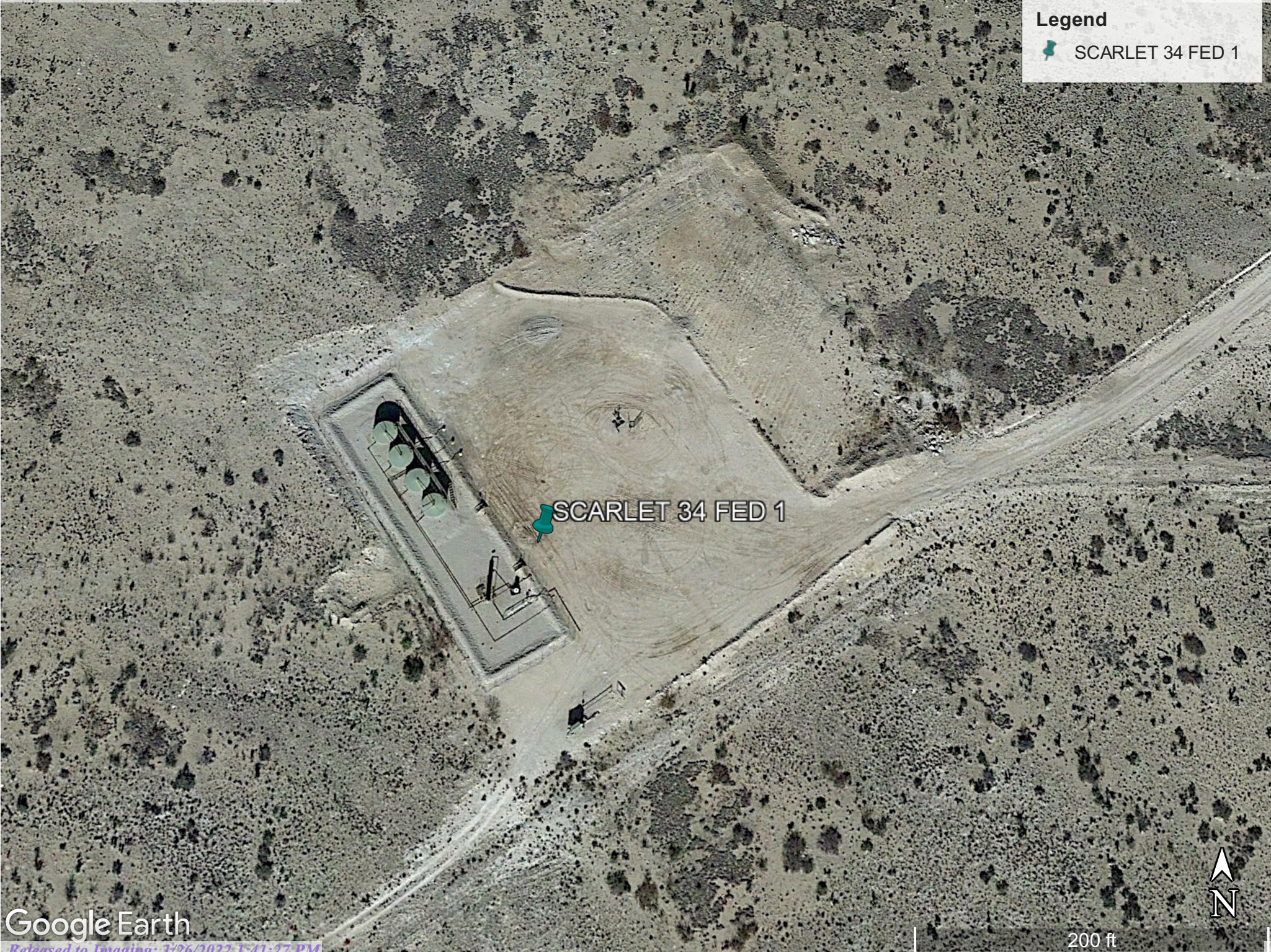


**Legend**

-  SCARLET 34 FED 1



 SCARLET 34 FED 1





**District I**  
 1625 N. French Dr., Hobbs, NM 88240  
 Phone:(575) 393-6161 Fax:(575) 393-0720  
**District II**  
 811 S. First St., Artesia, NM 88210  
 Phone:(575) 748-1283 Fax:(575) 748-9720  
**District III**  
 1000 Rio Brazos Rd., Aztec, NM 87410  
 Phone:(505) 334-6178 Fax:(505) 334-6170  
**District IV**  
 1220 S. St Francis Dr., Santa Fe, NM 87505  
 Phone:(505) 476-3470 Fax:(505) 476-3462

**State of New Mexico**  
**Energy, Minerals and Natural Resources**  
**Oil Conservation Division**  
**1220 S. St Francis Dr.**  
**Santa Fe, NM 87505**

QUESTIONS

Action 75547

**QUESTIONS**

Operator: CIMAREX ENERGY CO. OF COLORADO 600 N. Marienfeld Street Midland, TX 79701	OGRID: 162683
	Action Number: 75547
	Action Type: [UF-FAC] TB Registration (TB-REG)

**QUESTIONS**

<b>Facility Details</b>	
<i>Please answer all of the questions in this group.</i>	
Name of the facility	SCARLET 34 FED 1
Date the facility was opened	Not answered.
Depth to ground water, if known	Not answered.

<b>Verification</b>	
Does the operator have other facilities with a matching name	No
Are there other facilities located within approximately 50 feet	No

**District I**  
 1625 N. French Dr., Hobbs, NM 88240  
 Phone:(575) 393-6161 Fax:(575) 393-0720

**District II**  
 811 S. First St., Artesia, NM 88210  
 Phone:(575) 748-1283 Fax:(575) 748-9720

**District III**  
 1000 Rio Brazos Rd., Aztec, NM 87410  
 Phone:(505) 334-6178 Fax:(505) 334-6170

**District IV**  
 1220 S. St Francis Dr., Santa Fe, NM 87505  
 Phone:(505) 476-3470 Fax:(505) 476-3462

**State of New Mexico**  
**Energy, Minerals and Natural Resources**  
**Oil Conservation Division**  
**1220 S. St Francis Dr.**  
**Santa Fe, NM 87505**

ACKNOWLEDGMENTS

Action 75547

**ACKNOWLEDGMENTS**

Operator: CIMAREX ENERGY CO. OF COLORADO 600 N. Marienfeld Street Midland, TX 79701	OGRID: 162683
	Action Number: 75547
	Action Type: [UF-FAC] TB Registration (TB-REG)

**ACKNOWLEDGMENTS**

<input checked="" type="checkbox"/>	I certify that I am authorized to register a facility on behalf of the responsible operator.
<input checked="" type="checkbox"/>	I certify that I will notify OCD of any changes of ownership for this facility.
<input checked="" type="checkbox"/>	I certify that I will notify OCD when this facility is closed.