



June 11, 2021

Oil Conservation Division
1000 Rio Brazos
Aztec, NM 87410
ocd.enviro@state.nm.us

RE: 3RF-2, Basin Water Recycling Containment

Dear Mr. Smith & Ms. Venegas;

Basin Disposal Inc. is requesting an extension of six (6) months to the determination of cessation of operations for the Basin Water Recycling Facility (Permit/Registration #3RF-2) along with a 1 year extension of the registration/permit.

Per the May 5, 2021 extension granted by the OCD a couple requirements were stated:

1. *If BASIN DISPOSAL INC [1739] wishes to extend the registration/permit past the June 11, 2021, a registration/permit extension request must be submitted to OCD. Extension requests are reviewed on a case-by-case basis and evaluated on their merit. Extensions are considered for a maximum length of one year. Additional requests must be submitted to OCD (email to ocd.enviro@state.nm.us) on a Form C-147 (long form) as an Extension request and should include a formal extension request letter, a summary of the prior registration/permit period inspection reports, and the copies of the detailed inspection records for the prior permit period. The extension request should be submitted no later than May 30, 2021.*

The email server used by Basin Disposal has suffered a serious virus and malware attack this year and one impact was the unknown quarantining of emails. The May 5, 2021 email from the OCD was one such email and was finally recovered on June 9, 2021. Basin Disposal Inc missed the May 20, 2021 date but is submitting this request within 48 hours of the email's receipt.

2. *If less than 20% of the total fluid capacity is utilized every consecutive six months, operation of the facility is considered ceased and notification of cessation of operations should be sent electronically to OCD.Enviro@state.nm.us. An extension to extend the cessation of operations, not to exceed six months, may be submitted using a C-147 form to [OCD Online](#).*

Given the continued impact from the unprecedented slowdown of oil and gas exploration due to the Covid-19 pandemic there has been very little activity in the vicinity of the Basin Water Recycling Facility in Lybrook, NM. As such, less than 20% of the total fluid capacity has been utilized the past consecutive 6 months.

EOG Resources has been in contact with Basin about utilizing recycled water from the Basin Water Recycling Facility. The original date for this activity was December 2020. Due to delays

in EOG Resources obtaining right of ways and other permits the project has been delayed until fall of 2021. Basin Disposal believes that when that project is able to move forward the requirement of utilizing more than 20% of the total fluid capacity will be achievable.

3. *BASIN DISPOSAL INC [1739] will maintain a liquid level in the containment that is at least equal to the weight of the liner plus 20%. BASIN DISPOSAL INC [1739] may maintain a higher liquid level if they choose. Please provide the minimum liquid level calculation and the minimum liquid level to be maintained to the OCD no later than April 22, 2021.*

As stated earlier, the May 5, 2021 was not received until June 9, 2021 because the email server used by Basin Disposal has suffered a serious virus and malware attack. On that date, Basin Disposal replied via email with the calculation of the liner weight plus 20% and the minimum depth necessary as 1.6 feet (see attached). The weekly inspection reports for the time period of September 2020 through June 2021 show that the level has been maintained above the minimum needed.

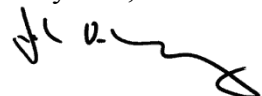
Basin Disposal has only taken enough water to offset the water evaporated thus has not yet commenced operations.

At the resumption of recycling operation, Basin shall perform an incremental fluid level test for liquid levels over the minimum maintained level.

1. Basin Disposal will pause filling operations every 10% of capacity above the minimum level. The total volume of the tank is 22,147 bbls and is 11 feet tall.
2. Basin will maintain the liquid level for each 10% increase (one foot/2000 bbls) for 24 hours and conduct an inspection of the leak detection system.
3. If there are no liquids present in the leak detection Basin may proceed to the next 10% and repeat the process until the containment full design capacity minus 3ft of freeboard is reached (i.e. 8 ft).
4. If liquids are present, the Basin shall perform a liner inspection and provide a written notice of the detected fluid via email to ocd.enviro@state.nm.us. Basin shall cease the incremental fill test until after written OCD approval to proceed is issued.
5. If a leak is confirmed are present Basin shall drain the last 10% and perform liner inspection/repair/replacement per 19.15.34.13 NMAC.

If you need anything else from me, please feel free to contact me on my cell phone at 505-320-2840 or email at jvolkerding@basindisposalinc.com .

Stay safe,



John Volkerding
Gen Mgr

Encl: C-147, Requesting Extension
Closure Plan

Inspection Records September 20-June 2021
C-148 Forms for September 20- June 2021

District I
1625 N. French Dr., Hobbs, NM 88240
District II
811 S. First St., Artesia, NM 88210
District III
1000 Rio Brazos Road, Aztec, NM 87410
District IV
1220 S. St. Francis Dr., Santa Fe, NM 87505

State of New Mexico
Energy Minerals and Natural Resources
Department
Oil Conservation Division
1220 South St. Francis Dr.
Santa Fe, NM 87505

Form C-147
Revised April 3, 2017

Recycling Facility and/or Recycling Containment

Type of Facility: ☒ Recycling Facility ☒ Recycling Containment*

Type of action: ☐ Permit ☐ Registration
☐ Modification ☒ Extension
☐ Closure ☐ Other (explain) _____

* At the time C-147 is submitted to the division for a Recycling Containment, a copy shall be provided to the surface owner.

Be advised that approval of this request does not relieve the operator of liability should operations result in pollution of surface water, ground water or the environment. Nor does approval relieve the operator of its responsibility to comply with any other applicable governmental authority's rules, regulations or ordinances.

1.
Operator: BASIN DISPOSAL INC (For multiple operators attach page with information) OGRID #: _____
Address: PO BOX 100, AZTEC, NM 87410
Facility or well name (include API# if associated with a well): BASIN WATER RECYCLING
OCD Permit Number: 3RF-2 (For new facilities the permit number will be assigned by the district office)
U/L or Qtr/Qtr SE 1/4 NE 1/4 & N 1/2 SE 1/4 Section 13 Township 23N Range 7W County: RIO ARRIBA
Surface Owner: ☒ Federal ☐ State ☐ Private ☐ Tribal Trust or Indian Allotment

2.
☒ **Recycling Facility:**
Location of recycling facility (if applicable): Latitude 36.225553° N Longitude 107.520556° W NAD83
Proposed Use: ☒ Drilling* ☒ Completion* ☒ Production* ☐ Plugging*
**The re-use of produced water may NOT be used until fresh water zones are cased and cemented*
☐ Other, *requires permit for other uses. Describe use, process, testing, volume of produced water and ensure there will be no adverse impact on groundwater or surface water.*
☒ Fluid Storage
☒ Above ground tanks ☐ Recycling containment ☐ Activity permitted under 19.15.17 NMAC explain type _____
☐ Activity permitted under 19.15.36 NMAC explain type: _____ ☐ Other explain _____
☐ For multiple or additional recycling containments, attach design and location information of each containment
☐ **Closure Report (required within 60 days of closure completion):** ☐ Recycling Facility Closure Completion Date: _____

3.
☒ **Recycling Containment:**
☐ Annual Extension after initial 5 years (attach summary of monthly leak detection inspections for previous year)
Center of Recycling Containment (if applicable): Latitude 36.225553° N Longitude 107.520556° W NAD: ☐ 1927 ☒ 1983
☐ For multiple or additional recycling containments, attach design and location information of each containment
☒ Lined ☒ Liner type: Thickness 45 mil ☒ LLDPE ☐ HDPE ☐ PVC ☐ Other _____
☒ String-Reinforced
Liner Seams: ☒ Welded ☒ Factory ☐ Other 11' x 133' Volume: 25000 bbl Dimensions: L _____ x W _____ x D _____
☐ Recycling Containment Closure Completion Date: _____

4.

Bonding:

- ☐ Covered under bonding pursuant to 19.15.8 NMAC per 19.15.34.15(A)(2) NMAC (These containments are limited to only the wells owned or operated by the owners of the containment.)
- ☒ Bonding in accordance with 19.15.34.15(A)(1). Amount of bond \$ 39,715.00 (work on these facilities cannot commence until bonding amounts are approved)
- ☒ Attach closure cost estimate and documentation on how the closure cost was calculated.

5.

Fencing:

- ☐ Four foot height, four strands of barbed wire evenly spaced between one and four feet
- ☐ Alternate. Please specify _____

6.

Signs:

- ☐ 12"x 24", 2" lettering, providing Operator's name, site location, and emergency telephone numbers
- ☐ Signed in compliance with 19.15.16.8 NMAC

7.

Variances:

Justifications and/or demonstrations that the proposed variance will afford reasonable protection against contamination of fresh water, human health, and the environment.

Check the below box only if a variance is requested:

- ☐ Variance(s): Requests must be submitted to the appropriate division district for consideration of approval. If a Variance is requested, include the variance information on a separate page and attach it to the C-147 as part of the application.

If a Variance is requested, it must be approved prior to implementation.

8.

Siting Criteria for Recycling Containment

Instructions: The applicant must provide attachments that demonstrate compliance for each siting criteria below as part of the application. Potential examples of the siting attachment source material are provided below under each criteria.

General siting**Ground water is less than 50 feet below the bottom of the Recycling Containment.**

NM Office of the State Engineer - iWATERS database search; USGS; Data obtained from nearby wells

☐ Yes ☒ No
☐ NA

Within incorporated municipal boundaries or within a defined municipal fresh water well field covered under a municipal ordinance adopted pursuant to NMSA 1978, Section 3-27-3, as amended.

☐ Yes ☐ No
☒ NA

- Written confirmation or verification from the municipality; written approval obtained from the municipality

Within the area overlying a subsurface mine.

☐ Yes ☒ No

- Written confirmation or verification or map from the NM EMNRD-Mining and Minerals Division

Within an unstable area.

☐ Yes ☒ No

- Engineering measures incorporated into the design; NM Bureau of Geology & Mineral Resources; USGS; NM Geological Society; topographic map

Within a 100-year floodplain. FEMA map

☐ Yes ☒ No

Within 300 feet of a continuously flowing watercourse, or 200 feet of any other significant watercourse, or lakebed, sinkhole, or playa lake (measured from the ordinary high-water mark).

☐ Yes ☒ No

- Topographic map; visual inspection (certification) of the proposed site

Within 1000 feet from a permanent residence, school, hospital, institution, or church in existence at the time of initial application.

☐ Yes ☒ No

- Visual inspection (certification) of the proposed site; aerial photo; satellite image

Within 500 horizontal feet of a spring or a fresh water well used for domestic or stock watering purposes, in existence at the time of initial application.

☐ Yes ☒ No

- NM Office of the State Engineer - iWATERS database search; visual inspection (certification) of the proposed site

Within 500 feet of a wetland.

☐ Yes ☒ No

- US Fish and Wildlife Wetland Identification map; topographic map; visual inspection (certification) of the proposed site

9.

Recycling Facility and/or Containment Checklist:**Instructions:** Each of the following items must be attached to the application. Indicate, by a check mark in the box, that the documents are attached.

- ☒ Design Plan - based upon the appropriate requirements.
- ☒ Operating and Maintenance Plan - based upon the appropriate requirements.
- ☒ Closure Plan - based upon the appropriate requirements.
- ☒ Site Specific Groundwater Data -
- ☒ Siting Criteria Compliance Demonstrations -
- ☒ Certify that notice of the C-147 (only) has been sent to the surface owner(s)

10.

Operator Application Certification:

I hereby certify that the information and attachments submitted with this application are true, accurate and complete to the best of my knowledge and belief.

Name (Print): JOHN VOLKERDING, PhDTitle: GENERAL MANAGERSignature: Date: 06/09/2021e-mail address: JVOLKERDING@BASINDISPOSALINC.COMTelephone: 505-334-3013

11.

OCD Representative Signature: _____ Approval Date: _____

Title: _____ OCD Permit Number: _____

- ☐ OCD Conditions _____
- ☐ Additional OCD Conditions on Attachment _____

Paragraph 4. Bonding

Addendum to C-147, Basin Disposal dba Basin Water Recycling #3RF-2

Attached is the cost estimate by Kleinfelder for the bond submitted in 2015. In speaking with companies, given the state of economic depression with the in oil and gas industry, the costs listed in the cost estimate have remained the same. Thus, the cost estimate and current bond is adequate to meet the requirements of 19.15.34.15.A(1)



**WATER BASIN RECYCLING CONTAINMENT
CLOSURE PLAN
BASIN DISPOSAL INC.
RIO ARriba COUNTY,
LYBROOK, NEW MEXICO**

June 25, 2015

**Copyright 2015 Kleinfelder
All Rights Reserved**

**ONLY THE CLIENT OR ITS DESIGNATED REPRESENTATIVES MAY USE THIS DOCUMENT AND ONLY FOR THE SPECIFIC
PROJECT FOR WHICH THIS REPORT WAS PREPARED.**



A Report Prepared for:

Mr. John Volkerding
Vice President
Basin Disposal Inc.
Bloomfield, New Mexico

**WATER BASIN RECYCLING CONTAINMENT CLOSURE PLAN
BASIN DISPOSAL INC.
RIO ARRIBA COUNTY,
LYBROOK, NEW MEXICO**

Prepared by:

A handwritten signature in black ink, reading "Theresa Ancell". The signature is written in a cursive style and is enclosed within a rectangular box.

Theresa Ancell
Environmental Professional

KLEINFELDER
1801 California St., Suite 1100
Denver, Colorado 80202
(303) 237-6601
www.kleinfelder.com

June 25, 2015



TABLE OF CONTENTS		
<u>SECTION</u>		<u>PAGE</u>
WATER BASIN RECYCLING CONTAINMENT CLOSURE PLAN		1
1.1. INTRODUCTION		1
1.2. SCOPE		1
1.3. PURPOSE		1
1.4. REQUIRED FORMS		1
1.5. REFERENCES		1
1.6. POLICY		2

APPENDICES

APPENDIX A – PORTABLE CONTAINMENT SYSTEM SCHEMATIC

APPENDIX B – COST ESTIMATE

WATER BASIN RECYCLING CONTAINMENT CLOSURE PLAN

1.1. INTRODUCTION

The purpose of this plan is to establish the minimum requirements, procedures and costs associated with closure and post-closure activities of the Water Basin Recycling Containment being permitted in Lybrook, NM.

1.2. SCOPE

The Basin Closure and Post Closure Policy shall be followed by all Basin employees with the key responsibilities as follows:

- A. Senior Management: Provides the necessary support, commitment, and resources to develop a closure and post closure plan.
- B. General Manager: Responsible for the preparation of closure and post closure plan, including a responsible third party contractor's cost estimate, sufficient to close the surface waste management facility in a manner that will protect fresh water, public health, safety and the environment.
- C. Plant Manager: Alerts the General Manager when there are changes in Basin Disposal activities that could impact or effect the closure or post closure plan.

1.3. PURPOSE

The requirements in the Closure and Post Closure Policy will aid in ensuring the closure of the facility in a manner that will protect fresh water, public health, safety and the environment pursuant to New Mexico Energy, Minerals and Natural Resources Department/Oil Conservation Division (NM EMNRD/OCD) requirements.

1.4. REQUIRED FORMS

- A. Cost Estimate
- B. OCD Form C-147
- C. OCD Form C-133
- D. OCD Form C-138

1.5. REFERENCES

- A. 19.15.34 NMAC

- B. Permit/Registration XXXX
- C. BLM Permit, NMNM 132770

1.6. POLICY

A Submittal of Financial Assurance

- i Pursuant to 19.15.8 NMAC Basin shall furnish financial assurance acceptable to the division in the amount of the recycling containment's estimated closure cost or \$25,000, whichever is greater.
- ii The financial assurance shall be on division-prescribed forms, payable to the state of New Mexico and conditioned upon the proper operation and site closure of the recycling containment as required by New Mexico statutes and division rules.
- iii Basin shall notify the division of any material change affecting the financial assurance within 30 days of discovery or notice of such change.
- iv Forfeiture of financial assurance. The division shall give Basin 20 days written notice and an opportunity for a hearing prior to forfeiting any financial assurance.
- v Forms of financial assurance. The division may accept the following forms of financial assurance.
 - 1 Surety bonds
 - 2 Letters of credit
 - 3 Cash accounts
- vi The division shall release a financial assurance upon Basin's or surety's written request if the recycling containment has been closed and the location remediated in accordance with 19.15.34 NMAC.
- vii The division may use funds in the oil and gas reclamation fund to remediate the impacts of a recycling containment if deemed necessary by the division director in the event of an emergency or insufficient financial assurance. In either case, the costs expended by the division may be recovered from the operator pursuant to Section 70-2-38 NMSA 1978. Basin is responsible for all costs of remediation of the recycling containment even if the costs exceed the financial assurance.

B Closure and Site Reclamation

- i Once operations have ceased, Basin shall remove all fluids within 60 days and close the containment within six months from the date the operator ceases operations from the containment for use.(19.15.34.14.A NMAC).

ii Basin shall notify the surface owner (i.e. Bureau of Land Management) by certified mail, return receipt requested that of Basin's planned closure operations at least 72 hours, but not more than one week, prior to any closure operation. Basin shall ensure the notice includes the location.

iii Basin shall notify the appropriate division district office verbally and in writing at least 72 hours, but not more than one week, prior to any closure operation. Basin shall ensure the notice includes the operator's name and the location to be closed by unit letter, section, township and range.

iv Basin shall close the recycling containment by first removing all fluids, contents and synthetic liners and transferring these materials to a division approved facility.

v After the tanks have been emptied Basin will be disconnect the tanks and manways will be removed. Removal of tanks for reuse will require an escort and permits for transporting on highways.

vi Basin shall test the soils beneath the containment for contamination with a five-point composite sample which includes stained or wet soils, if any, and that sample shall be analyzed for the constituents listed below since depth to groundwater is between 51 feet and 100 feet

vii Analytical Requirements

Constituent	Method*	Limit**
Chloride	EPA 300.0	10,000 mg/kg
TPH (GRO+DRO+MRO)	EPA SW-846 Method 8015M	2,500 mg/kg
GRO+DRO	EPA SW-846 Method 8015M	1,000 mg/kg
BTEX	EPA SW-846 Method 8021B or 8260B	50 mg/kg
Benzene	EPA SW-846 Method 8021B or 8260B	10 mg/kg

* Or other test methods approved by the division.

** Numerical limits or natural background level, whichever is greater.

1 If any contaminant concentration is higher than the parameters listed above, the division may require additional delineation upon review of the results and Basin must receive approval before proceeding with closure.

2 If all contaminant concentrations are less than or equal to the parameters listed in above, then Basin can proceed to backfill with non-waste containing, uncontaminated, earthen material.

viii Within 60 days of closure completion, Basin shall submit a closure report on form C-147, including required attachments, to document all closure activities including sampling results and the details on any backfilling, capping or covering, where applicable. The closure report shall certify that all information in the report and attachments is correct and that the operator has complied with all applicable closure requirements and conditions specified in division rules or directives.

ix Once the recycling containment is closed, Basin shall reclaim the containment's location to a safe and stable condition that blends with the surrounding undisturbed area.

1 Basin shall replace topsoils and subsoils to their original relative positions and contoured so as to achieve erosion control, long-term stability and preservation of surface water flow patterns.

2 Basin shall reseed the disturbed area in the first favorable growing season following closure of a recycling containment.

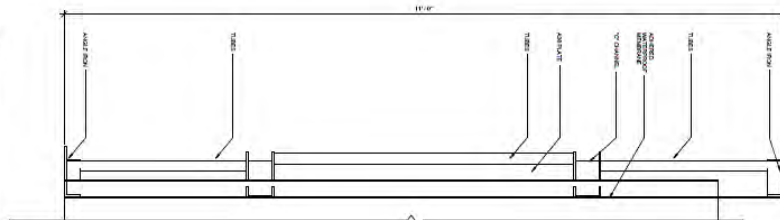
3 Basin shall substantially restore the impacted surface area to the condition that existed prior to the construction of the recycling containment.

x Reclamation of all disturbed areas no longer in use shall be considered complete when all ground surface disturbing activities at the site have been completed, and a uniform vegetative cover has been established that reflects a life-form ratio of plus or minus fifty percent (50%) of pre-disturbance levels and a total percent plant cover of at least seventy percent (70%) of pre-disturbance levels, excluding noxious weeds.

xi Basin shall follow the BLM Surface Reclamation Plan dated November 2014.

xii Basin shall notify the division when reclamation and re-vegetation are complete.

APPENDIX A – PORTABLE CONTAINMENT SYSTEM SCHEMATIC



Drawn by AKG
 Checked by J
 Project Date 07/23/2014
 Project Number 130704

APPENDIX B – COST ESTIMATE

Recycling Closure – Associated Cost Breakdown						
Task	Quantity	Trucks	Hours	Cost/unit	No. of Units	Cost
EQUIPMENT REMOVAL						
Remove liquids from containment and receiving tanks	24,000	300	150	\$ 65.00 /hour		\$9,750.00
Disposal of liquids from containment and receiving tanks	24,000			\$ 0.75 /bbl		\$18,000.00
Remove liquids from pipes				\$ 65.00 /hour	2	\$130.00
Disassemble/Remove piping & pumps				\$ 170.00 /hour	5	\$850.00
Remove/Transport tanks				\$ 1,340.00 /day	1	\$1,340.00
Remove 6 foot chain link fencing				\$ 170.00 /hour	2	\$340.00
Transport fencing to recycler				\$ 75.00 /hour	2	\$150.00
Grade/Backfill processing area				\$ 1,185.00 /day	3	\$3,555.00
Subtotal						\$34,115.00
SOILS BELOW CONTAINMENT						
TPH (418.1)				\$ 54.00 /sample	5	\$270.00
Chloride, EPA 300				\$ 45.00 /sample	5	\$225.00
BTEX (8021B or 8260B)				\$ 45.00 /sample	5	\$225.00
Benzene (8021B or 8260B)				\$ 45.00 /sample	5	\$225.00
Chlorides (300.0, 300.1, SM4500B)				\$ 15.00 /sample	5	\$75.00
Subtotal						\$1,020.00
GRADE/BACKFILL/RE-VEGETATION						
Grading and Backfill				\$ 1,290.00 /day	2	\$2,580.00
Re-vegetation				\$ 200.00 /acre	10	\$2,000.00
Subtotal						\$4,580.00
TOTAL RECYCLING CLOSURE COSTS						\$39,715.00

Paragraph 8. Siting

Addendum to C-147, Basin Disposal dba Basin Water Recycling #3RF-2

9.15.34.11 SITING REQUIREMENTS FOR RECYCLING CONTAINMENTS:

A. An operator shall not locate a recycling containment:

- (1) where ground water is less than 50 feet below the bottom of the containment

Comparing the information submitted in 2015 to currently available information the OSE lists one additional well within half a mile which is the SJ 04054 POD1 showing a depth to groundwater of 180 feet. All other information is the same for the OSE. The 2015 submittal included groundwater data obtained from WPX from their cathodic protection anode bed installations in the area. Using data from the 9 locations within approximately 1 mile radius of the recycling containment, groundwater is shown to range from a depth of 60 feet to 100 feet. The nearest point, NE Chaco Com 186H 187H 203H 204H location, shows a depth of 60 feet at 980 feet to the SSE (Easting (x) 273860 and Northing (y) 4011619). The second nearest point NE Chaco Com 184H 185H shows a depth of 88 feet at 1635 ft to the NNE (easting (x) 273625 and Northing (y) 4012379) That data has been included.

There is no groundwater less than 50 feet below the bottom of the containment.

- (2) within 300 feet of a continuously flowing watercourse, or 200 feet of any other significant watercourse or lakebed, sinkhole, or playa lake (measured from the ordinary high-water mark)

Comparing the information submitted in 2015 which stated it was 499 feet to a watercourse, using the US Fish and Wildlife Surface Waters and Wetland inventory, the actual as built distance is 494 feet.

There is no continuously flowing watercourse within 300 or any other significant watercourse within 200 feet of the containment..

- (3) within 1000 feet of a permanent residence, school, hospital, institution, or church in existence at the time of the initial registration;

Comparing the information submitted in 2015 which stated it was 1455 feet to a residence using Google Earth, the actual as built distance is 1301 feet

There is no residence with 1000 feet of the recycling containment

- (4) within 500 feet of a spring or fresh water well used for domestic or stock watering purposes in existence at the time of initial registration;

Comparing the information submitted in 2015 which stated it was 2172 feet to a spring using the US Fish and Wildlife Surface Waters and Wetland inventory, the actual as built distance is 2436 feet.

There is no spring within 500 feet of the containment.

(5) within incorporated municipal boundaries or within a defined municipal fresh water well field covered by a municipal ordinance adopted pursuant to Section 3-27-3 NMSA 1978, as amended, unless the municipality specifically approves the recycling containment in writing;

The recycling containment is not within any incorporated municipal boundaries with a defined municipal fresh water well field covered by a municipal ordinance adopted pursuant to Section 3-27-3 NMSA 1978, as amended

(6) within 500 feet of a wetland

Comparing the information submitted in 2015 which stated it was 2172 feet to a spring using the US Fish and Wildlife Surface Waters and Wetland inventory, the actual as built distance is 2436 feet.

There is no wetland within 500 feet of the containment

(7) within an area overlying a subsurface mine

According to the NM EMNRD Mining and Mineral Division database there are no subsurface mines in Section 13, Township 23N, Range 7W of Rio Arriba County

(8) within an unstable area unless the operator demonstrates that it has incorporated engineering measures into the design to ensure that the containment's integrity is not compromised

The recycling containment is not located in an unstable area. The location is not over a mine and is not on the side of a hill. The location of the excavated surface material will not be located within 100 feet of a continuously flowing or significant watercourse

(9) within a 100 year floodplan

Comparing the information submitted in 2015 to the current FEMA National Flood database, the containment is still not within a 100-year floodplan



New Mexico Office of the State Engineer

Water Column/Average Depth to Water

(A CLW##### in the
 POD suffix indicates the
 POD has been replaced
 & no longer serves a
 water right file.)

(R=POD has
 been replaced,
 O=orphaned,
 C=the file is
 closed)

(quarters are 1=NW 2=NE 3=SW 4=SE)

(quarters are smallest to largest) (NAD83 UTM in meters)

(In feet)

POD Number	Code	POD Sub-basin	County	Q 64	Q 16	Q 4	Sec	Tws	Rng	X	Y	Distance	DepthWell	DepthWater	Water Column
SJ 01156		SJ	RA	2	2	1	18	23N	06W	274330	4012555*	1038	1500	200	1300
SJ 04054 POD1		SJ	RA			1	14	23N	07W	270627	4012298	2950	273	180	93
SJ 02233		SJ	RA	1	1	2	15	23N	07W	269856	4012864*	3821	1100		
SJ 02233 CLW223636	O		RA	1	1	2	15	23N	07W	269856	4012864*	3821	1100		
SJ 01507		SJ	RA	3	3	4	10	23N	07W	269889	4013098*	3857	1709	900	809
SJ 01506		SJ	SA	1	1	3	22	23N	06W	278535	4010015*	5323	280		

Average Depth to Water: **426 feet**

Minimum Depth: **180 feet**

Maximum Depth: **900 feet**

Record Count: 6

UTMNAD83 Radius Search (in meters):

Easting (X): 273546.71

Northing (Y): 4011873.79

Radius: 8000

*UTM location was derived from PLSS - see Help

The data is furnished by the NMOSE/ISC and is accepted by the recipient with the expressed understanding that the OSE/ISC make no warranties, expressed or implied, concerning the accuracy, completeness, reliability, usability, or suitability for any particular purpose of the data.

6/10/21 3:40 PM

WATER COLUMN/ AVERAGE DEPTH TO
 WATER



New Mexico Office of the State Engineer

Point of Diversion Summary

(quarters are 1=NW 2=NE 3=SW 4=SE)

(quarters are smallest to largest)

(NAD83 UTM in meters)

Well Tag	POD Number	Q64 Q16 Q4 Sec TwS Rng	X	Y
SJ	04054 POD1	1 14 23N 07W	270627	4012298



x

Driller License: 1111 **Driller Company:** STEVE & SON, LLC

Driller Name: STEVENSON, STEVE L.

Drill Start Date: 03/02/2014	Drill Finish Date: 03/03/2014	Plug Date:
Log File Date: 03/13/2014	PCW Rcv Date:	Source: Shallow
Pump Type:	Pipe Discharge Size:	Estimated Yield: 8 GPM
Casing Size: 5.00	Depth Well: 273 feet	Depth Water: 180 feet

x

Water Bearing Stratifications:	Top	Bottom	Description
	0	30	Other/Unknown

x

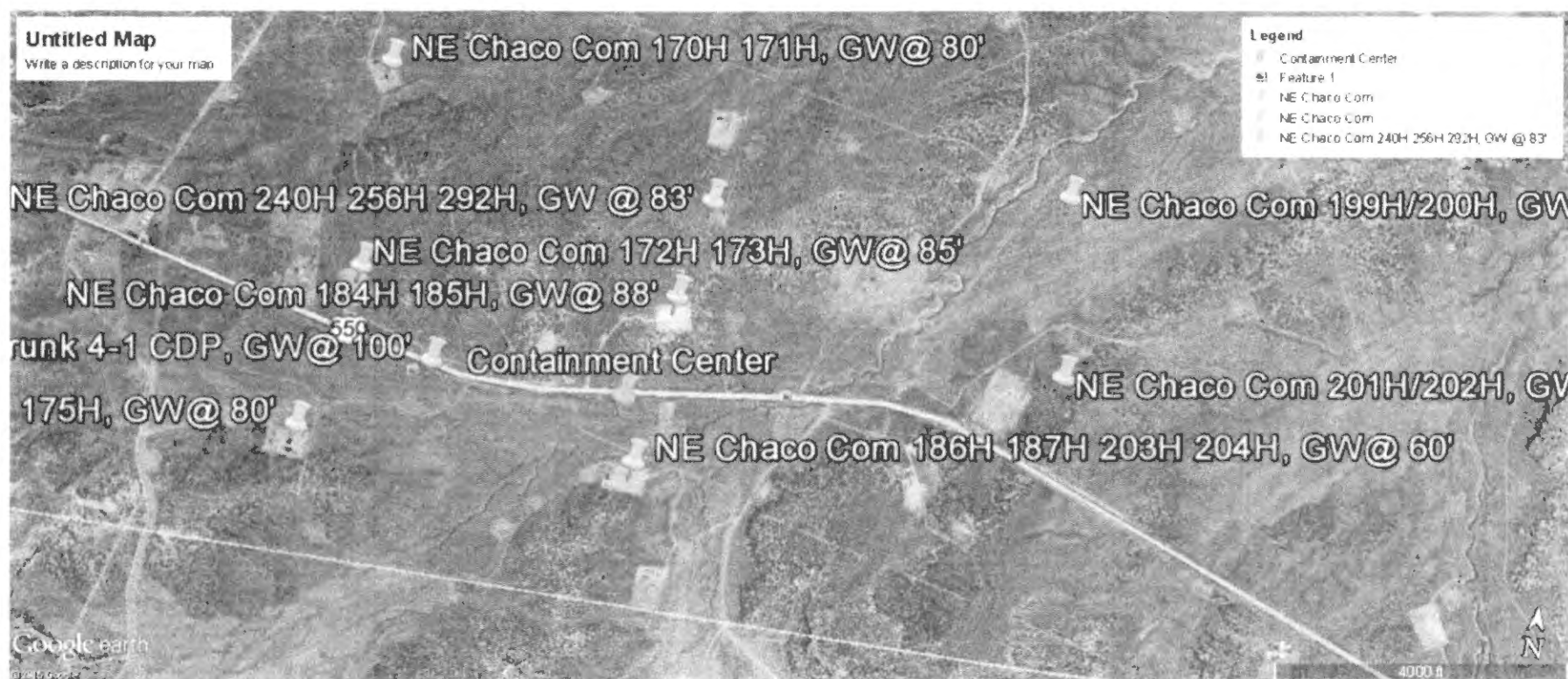
Casing Perforations:	Top	Bottom
	1	30
	30	273

x

The data is furnished by the NMOSE/ISC and is accepted by the recipient with the expressed understanding that the OSE/ISC make no warranties, expressed or implied, concerning the accuracy, completeness, reliability, usability, or suitability for any particular purpose of the data.

6/10/21 3:41 PM

POINT OF DIVERSION SUMMARY



CHACO SLOPE						
Well Name	Water Depth	Township/section/range			Long	Lat
Chaco Trunk 4-1 CDP	100'	23N	07W	12/13	107.53006	36.22590
NE Chaco Com 172H 173H	85'	23N	07W	13D	107.53433	36.22937
NE Chaco Com 174H 175H	80'	23N	07W	13L	107.53576	36.22266
NE Chaco Com 186H 187H 203H 204H	60'	23N	07W	13I	107.51959	36.22301
NE Chaco Com 184H 185H	88'	23N	07W	13A	107.51879	36.22980
NE Chaco Com 240H 256H 292H	83'	23N	06W	18M	107.51783	36.21883
NE Chaco Com 170H 171H	80'	23N	07W	12L	107.53496	36.23815
NE Chaco Com 199H/200H	86'	23N	06W	08L	107.50062	36.23615
NE Chaco Com 201H/202H	81'	23N	06W	17E	107.50001	36.22861

Distance to Center of Containment		
ft	Degrees	
2,816	272	W
4,284	288	WNW
4,610	256	WSW
980	163	SSE
1,635	18	NNE
4,070	8	N
6,240	317	NNW
7,059	56	ENE
6,177	79	ESE

Ground Bed Drilling Log

Company: VFX

Well: 1864 / 203H / 187H

Date: 10-20 10-21

Location: Sec 13 T-23N R-7W

State: North Carolina

Rig: Story

Ground Bed Depth: 300'

Water Depth: 120'

Diameter: 1 3/4

Fuel Usage: 85 gal / 90 g / 81 g

DEPTH

FORMATION

OTHER

6-40

Sand Stone, Shale, Sand w/ Shale w/ Sand

PVC #186H

0-40'

Sand Stone, Shale, Sand w/ Shale w/ Sand

PVC # 203H

60-100

Sand Stone, Shale, Sand w/ Shale w/ Sand

100-140

Sand Stone, Shale, Sand w/ Shale w/ Sand

140-180

Sand Stone, Shale, Sand w/ Shale w/ Sand

180-286

Sand Stone Shale Sand w/ Shale w/ Sand

280-300

Sand Stone, Shale, Sand w/ Shale w/ Sand

[illegible]

Company: VPX Well: 186H / 203H / 187H Date: 10-20 10-21

Location: Sec 13 T-23N R-2W State: Illinois Rig: Story

Ground Bed Depth: 300' Water Depth: 120' Diameter: 1 3/4

Fuel Usage: 85gal / 90g / 81g

OTHER

0-40	Sand Stone, Shale, Sand w/ Shale w/ Sand	PVC #1864
0-60'	Sand Stone, Shale, Sand w/ Shale w/ Sand	PVC #2034
60-100	Sand Stone, Shale, Sand w/ Shale w/ Sand	
100-140	Sand Stone, Shale, Sand w/ Shale w/ Sand	
140-180	Sand Stone, Shale, Sand w/ Shale w/ Sand	
180-280	Sand Stone, Shale, Sand w/ Shale w/ Sand	
280-300	Sand Stone, Shale, Sand w/ Shale w/ Sand	

[illegible]

[RETURN TO MMD MAIN PAGE](#)

Mine Registrations and Permits Search

New Mexico Mining and Minerals Division

[Home](#) [Search](#)

Mine Registrations and Permits

General

Name	<input type="text" value="Type here"/>
Operator	<input type="text" value="Type here"/>
Status	<input type="text"/>
Commodity	<input type="text"/>
Permit Number	<input type="text" value="Type here"/>

Owner

Mineral Owner	<input type="text"/>
Surface Owner	<input type="text"/>

Location

County	<input type="text"/>				
Quad	<input type="text"/>				
Grant	<input type="text"/>				
Township	<input type="text" value="23N"/>	Range	<input type="text" value="07W"/>	Section	<input type="text" value="Sec 13"/>

Date

Submission/Registration

From	<input type="text"/>	To	<input type="text"/>
------	----------------------	----	----------------------

Approval

From	<input type="text"/>	To	<input type="text"/>
------	----------------------	----	----------------------

[Search](#) [Reset](#)

To see all mine registrations and permits, leave all fields blank, then click Search

RETURN TO MMD MAIN PAGE

Mine Registrations and Permits Search

New Mexico Mining and Minerals Division

Home Search Results

Search Results - Mine Registrations And Permits

Details Permit Number Name Operator County Commodities Approval/Registration Status

[Back to Search](#)

Page
0 of 0

Export to KML

Export All to Excel

For help, call the Mining & Minerals Division at (505) 476-3400 or email: MMDWebInfo@state.nm.us

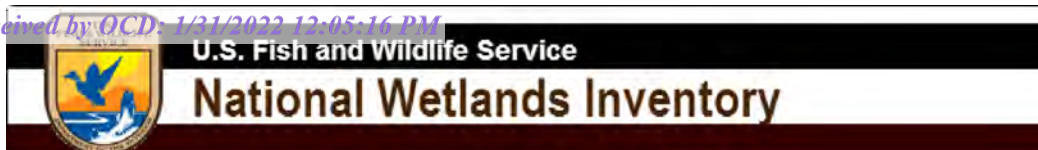
New Mexico Energy, Minerals and Natural Resources Department | Copyright 2014
1220 South St. Francis Drive | Santa Fe, NM 87505 | P: (505) 476-3200 | F: (505) 476-3220

EMNRD Home

Administration

Contact EMNRD

Mining and Minerals



Water Course Distance



June 10, 2021

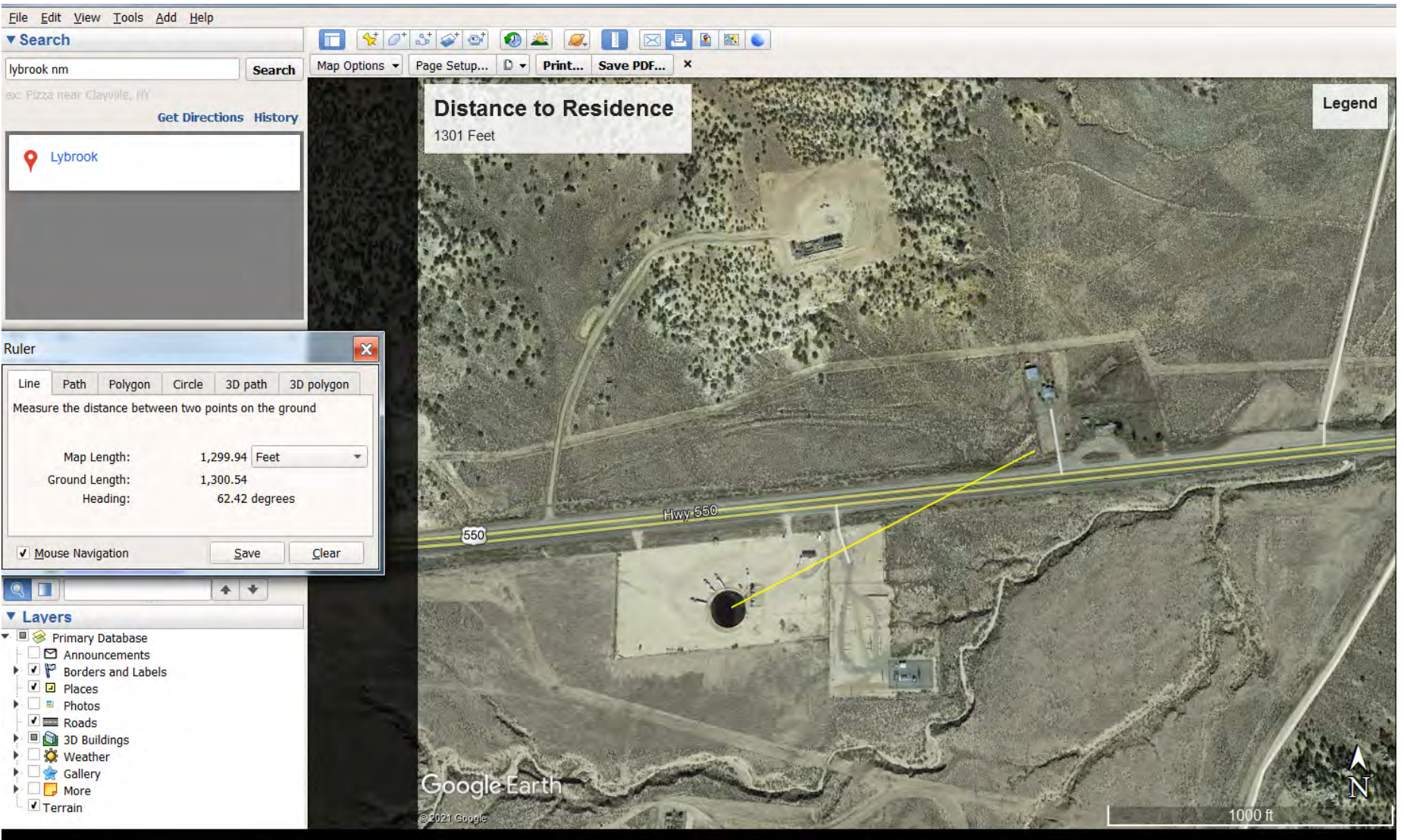
Wetlands

- Estuarine and Marine Deepwater
- Estuarine and Marine Wetland

- Freshwater Emergent Wetland
- Freshwater Forested/Shrub Wetland
- Freshwater Pond

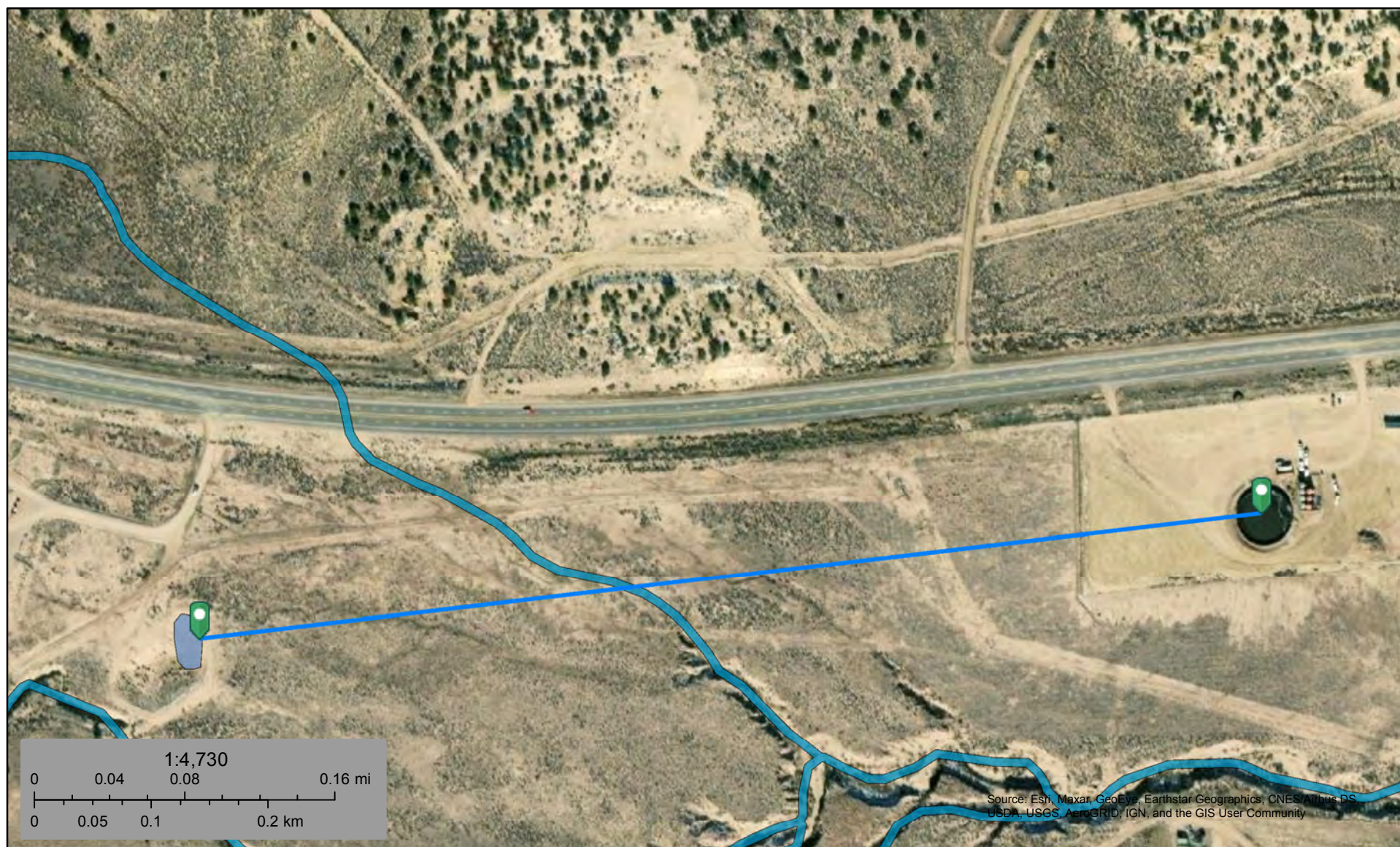
- Lake
- Other
- Riverine

This map is for general reference only. The US Fish and Wildlife Service is not responsible for the accuracy or currentness of the base data shown on this map. All wetlands related data should be used in accordance with the layer metadata found on the Wetlands Mapper web site.





Spring Distance



June 10, 2021

Wetlands

- Estuarine and Marine Deepwater
- Estuarine and Marine Wetland

- Freshwater Emergent Wetland
- Freshwater Forested/Shrub Wetland
- Freshwater Pond

- Lake
- Other
- Riverine

This map is for general reference only. The US Fish and Wildlife Service is not responsible for the accuracy or currentness of the base data shown on this map. All wetlands related data should be used in accordance with the layer metadata found on the Wetlands Mapper web site.

National Flood Hazard Layer FIRMette



107°31'30"W 36°13'46"N



Legend

SEE FIS REPORT FOR DETAILED LEGEND AND INDEX MAP FOR FIRM PANEL LAYOUT

SPECIAL FLOOD HAZARD AREAS		Without Base Flood Elevation (BFE) Zone A, V, A99
		With BFE or Depth Zone AE, AO, AH, VE, AR
		Regulatory Floodway
OTHER AREAS OF FLOOD HAZARD		0.2% Annual Chance Flood Hazard, Areas of 1% annual chance flood with average depth less than one foot or with drainage areas of less than one square mile Zone X
		Future Conditions 1% Annual Chance Flood Hazard Zone X
		Area with Reduced Flood Risk due to Levee. See Notes. Zone X
		Area with Flood Risk due to Levee Zone D
OTHER AREAS		NO SCREEN Area of Minimal Flood Hazard Zone X
		Effective LOMRs
		Area of Undetermined Flood Hazard Zone D
GENERAL STRUCTURES		Channel, Culvert, or Storm Sewer
		Levee, Dike, or Floodwall
OTHER FEATURES		20.2 Cross Sections with 1% Annual Chance Water Surface Elevation
		17.5 Cross Sections with 1% Annual Chance Water Surface Elevation
		Coastal Transect
		Base Flood Elevation Line (BFE)
		Limit of Study
		Jurisdiction Boundary
		Coastal Transect Baseline
		Profile Baseline
MAP PANELS		Digital Data Available
		No Digital Data Available
		Unmapped



The pin displayed on the map is an approximate point selected by the user and does not represent an authoritative property location.

This map complies with FEMA's standards for the use of digital flood maps if it is not void as described below. The basemap shown complies with FEMA's basemap accuracy standards

The flood hazard information is derived directly from the authoritative NFHL web services provided by FEMA. This map was exported on 6/10/2021 at 6:00 PM and does not reflect changes or amendments subsequent to this date and time. The NFHL and effective information may change or become superseded by new data over time.

This map image is void if the one or more of the following map elements do not appear: basemap imagery, flood zone labels, legend, scale bar, map creation date, community identifiers, FIRM panel number, and FIRM effective date. Map images for unmapped and unmodernized areas cannot be used for regulatory purposes.

Paragraph 9. Recycling Facility and/or Containment Checklist

Addendum to C-147, Basin Disposal dba Basin Water Recycling #3RF-2

☒ Design Plan - based upon the appropriate requirements.

In Basin Disposal's original C-147 application dated 6/10/15 Basin Disposal requested a variance from screening and netting and proposed installing a floating roof on the containment. After operating the floating roof, it was determined that alternate methods of controlling migratory birds was in order. A modification c-147 was submitted dated 9/17/18 where Basin Disposal proposed some or all of the following Bird Control Measures:

BroadBand PRO 4-speaker sonic and ultrasonic bird repeller

Terror Eyes

Prowler Owls

Bird X Laser

To date the Terror Eyes, Prowler Owls and Bird X Laser have been implemented. Basin Disposal has observed no birds ever in the recycling containment.

The updated Design Plan to reflect the changes is attached.

☒ Operating and Maintenance Plan - based upon the appropriate requirements.

The updated Operational Plan is included to reflect the operational requirement of maintaining the water level in the containment at a minimum of 2.4 feet to ensure compliance with the NM OCD requirement of the May 5, 2021 approval to maintain a liquid level in the containment that is at least equal to the weight of the liner plus 20%.

☒ Closure Plan - based upon the appropriate requirements.

Please see the attachment titled Paragraph 4. Bonding

☒ Siting Criteria Compliance Demonstrations

Please see the attachment titled Paragraph 8. Siting

☒ Certify that notice of the C-147 (only) has been sent to the surface owner(s)

I, John Volkerding, General Manager at Basin Disposal Inc (dba Basin Water Recycling) certify that the attached letter addressed to the surface owner (i.e. BLM) dated June 9, 2021 was sent to: Scott Hall, BLM, 6251 College Blvd., Suite A, Farmington, NM 87402

Name

Date

18 Design and Construction Plan

18.1 Introduction

The Basin Design and Construction Plan assists Basin personnel in ensuring compliance with the minimum design and construction requirements for recycling containments as defined by the NM OCD outlined in 19.15.34.13 NMAC and in BLM permit NMNM 132770

18.2 Scope

The Basin Design and Construction Plan applies to any Employee(s) and Subcontractor(s) whose job requires them assist with the design and construction of the facility.

18.3 Purpose

The Basin Design and Construction Plan is designed to ensure compliance with the minimum design and construction requirements for recycling containments as defined by the NM OCD outlined in 19.15.34.13 NMAC and in BLM permit NMNM 132770

18.4 Required Forms

None

18.5 Reference(s)

- A** 19.15.34 NMAC
- B** Permit/Registration 3RF-2
- C** BLM Permit, NMNM 132770

18.6 Design and Construction

A Recycling Containment

i Basin shall design and construct a recycling containment in accordance with the following specifications.

- 1 Basin shall design and construct a recycling containment to ensure the confinement of produced water, to prevent releases and to prevent overtopping due to wave action or rainfall.
- 2 Basin and its contractors shall ensure the recycling containment has a properly constructed foundation and interior slopes consisting of a firm, unyielding base, smooth and free of rocks, debris, sharp edges or irregularities to prevent the liner's rupture or tear.
- 3 Basin shall use geotextile under the liner, if needed, to reduce localized stress-strain or protuberances that otherwise may compromise the liner's integrity.
- 4 Basin's recycling containment shall incorporate, a primary (upper) liner and a secondary (lower) liner with a leak detection system.
- 5 Basin shall ensure primary (upper) liners in the recycling containment shall be geomembrane liners composed of an impervious, synthetic material that is resistant to ultraviolet light, petroleum hydrocarbons, salts and acidic and alkaline solutions.
- 6 Basin's primary liners shall be 45-mil LLDPE string reinforced liner.
- 7 Basin's secondary liner shall be 30-mil LLDPE string reinforced liner
- 8 Basin shall ensure the subcontractor installing the recycling containment

minimizes liner seams and orient them up and down, not across, a slope of the levee. Basin shall ensure that factory welded seams shall be used where possible.

9 Basin shall ensure the subcontractor installing the recycling containment ensures field seams in geosynthetic material are thermally seamed and that prior to any field seaming, the installer shall overlap liners four to six inches.

10 Basin shall ensure the subcontractor installing the recycling minimizes the number of field seams and corners and irregularly shaped area. Basin will only hire qualified personnel to perform field welding and testing.

11 Basin shall ensure that the liner is protected from excessive hydrostatic force and mechanical damage at the points of discharge into or suction from the recycling containment. Additionally, Basin shall ensure external discharge or suction lines shall not penetrate the liner. Basin shall accomplish both of these by the installation of an up and over "candy cane" shaped ridged piping that has a steel diverter plate to distribute the water minimizing hydrostatic forces.

12 Basin shall place a leak detection system between the upper and lower geomembrane liners that shall consist of 200-mil geonet to facilitate drainage. The leak detection system shall consist of a properly designed drainage and collection and removal system placed above the lower geomembrane liner in depressions and sloped to facilitate the earliest possible leak detection. A 3 foot wide by 3 foot long by 2 foot deep depression will be constructed to allow for collection of any leaking liquid. A 2 inch pvc line will be installed from the top of the tank to the depression to allow for detection

B Stockpiling of Top Soil

i Prior to constructing containment, Basin shall strip and stockpile the topsoil for use as the final cover or fill at the time of closure.

ii Basin shall not locate material excavated during construction:

(1) within 100 feet of a continuously flowing watercourse or significant watercourse;

(2) within 200 feet from a lakebed, sinkhole or playa lake (measured from the ordinary high-water mark);

(3) within 100 feet of a wetland; or

(4) within a 100-year floodplain.

C Berming

i Berms or firewalls will be constructed around all storage facilities sufficient in size to contain the storage capacity of tanks, or the combined capacity of tanks if a rupture could drain more than one tank

D Signs

i Basin shall post an upright sign no less than 12 inches by 24 inches with lettering not less than two inches in height in a conspicuous place at the entrance to the facility

ii Basin shall post the sign in a manner and location such that a person can easily read the legend.

1 The sign shall provide the following information:

2 the operator's name,

3 the location of the site by quarter-quarter or unit letter, section, township & range,

4 emergency telephone numbers.

E *Fencing*

- i Basin shall fence or enclose the entire working site in a manner that deters unauthorized wildlife and human access and shall maintain the fences in good repair.
- ii Basin shall ensure that all gates associated with the fence are closed and locked when responsible personnel are not onsite.
- iii Basin shall erect a 6 foot chain link fence with a barbed wire security top.

F *Bird Control*

- i Basin shall ensure that a recycling containment has the following equipment installed and operational so as to be protective of wildlife, including migratory birds.
 - 1 Terror Eyes
 - 2 Prowler Owls
 - 3 Bird X Laser

20 General Operational Plan

20.1 Introduction

The Basin General Operational Requirements Policy assists Employees in complying with the minimum operational requirements for recycling containments as defined by the NM OCD outlined in 19.15.34.13 NMAC and in BLM permit NMNM 132770

20.2 Scope

The Basin General Operational Requirements Policy applies to all Basin Employees.

20.3 Purpose

The Basin General Operational Policy provides Basin Employees directives for operating the recycling containment in compliance with OCD and BLM rules.

20.4 Required Forms

- A** Inspection Form
- B** NM OCD C-148

20.5 References

- A** 19.15.34 NMAC A&B
- B** OCD Permit/Registration 3RF-2
- C** BLM Permit, NMNM 132770

20.6 Policy

A Inspection

- i** Basin Employees shall inspect the recycling containment and associated leak detection systems weekly while it contains fluids.
- ii** Basin shall maintain a current log of such inspections and make the log available for review by the division upon request.

B Maintenance and Operation

- i** Basin Employees shall maintain and operate a recycling containment in accordance with the following requirements.
 - 1** Basin Employees shall remove any visible layer of oil from the surface of the recycling containment.
 - 2** Basin Employees shall maintain at least three feet of freeboard at each containment.
 - 3** Basin Employees shall ensure a minimum of 2.4 feet of water is in the containment.
 - 4** Basin shall ensure the injection and withdrawal of fluids from the containment shall be accomplished through pipes with a diverter plate that prevents damage to the liner by erosion.
 - 5** Basin shall ensure the pipes will be sturdily mounted at the top with angle iron to eliminate impact from installation and removal of hoses or pipes.

6 In the event the containment's primary liner is compromised above the fluid's surface, Basin employees shall repair the damage or initiate replacement of the primary liner within 48 hours of discovery or seek an extension of time from the division district office.

7 In the event the primary liner is compromised below the fluid's surface, Basin employees shall remove all fluid above the damage or leak within 48 hours of discovery, notify the division district office and repair the damage or replace the primary liner.

8 Basin shall ensure the ground surrounding the recycling containment is contoured such that surface water run on is diverted away from the containment to prevent erosion and ensure integrity of the containment.

9 Basin shall maintain on site, an oil absorbent boom to contain an unanticipated release.

C Recordkeeping

- i Basin Employees shall maintain records of the above operations as follows
 - 1 At a minimum the above shall be checked and documented weekly
 - 2 The records shall be maintained so as to accessible for inspection
 - 3 The activity shall be documented on the Containment Inspection form
 - 4 Monthly water reuse shall be recorded so it can be reported on the NM OCD Form C-148.

D Reporting

- i Basin Management shall ensure monthly C-148 forms are submitted via the NM OCD online portal

E Cessation of Operations

- i Basin management shall deem the recycling containments to have ceased operations if less than 20% of the total fluid capacity is used every six months following the first withdrawal of produced water for use.
- ii Basin management shall report cessation of operations to the appropriate division district office. The appropriate division district office may grant an extension to this determination of cessation of operations not to exceed six months

District I
1625 N. French Dr., Hobbs, NM 88240
District II
811 S. First St., Artesia, NM 88210
District III
1000 Rio Brazos Road, Aztec, NM 87410
District IV
1220 S. St. Francis Dr., Santa Fe, NM 87505

State of New Mexico
Energy Minerals and Natural Resources
Department
Oil Conservation Division
1220 South St. Francis Dr.
Santa Fe, NM 87505

Form C-147
Revised April 3, 2017

Recycling Facility Only

Type of action: ☐ Permit ☐ Registration ☒ Modification ☐ Closure ☐ Other (explain) _____

Be advised that approval of this request does not relieve the operator of liability should operations result in pollution of surface water, ground water or the environment. Nor does approval relieve the operator of its responsibility to comply with any other applicable governmental authority's rules, regulations or ordinances.

1.
Operator: Basin Disposal Inc, dba Basin Water Recycling (For multiple operators attach page with information) OGRID #: _____
Address: Mailing: PO Box 100, Aztec, NM 87410 Physical: 10127 US Hwy 550, Lybrook, NM
Facility or well name (include API# if associated with a well): Basin Water Recycling
OCD Permit Number: 3RF-2 (For new facilities the permit number will be assigned by the district office)
U/L or Qtr/Qtr S/2 NE 1/4 N 1/2 SE 1/4 Section 13 Township 23N Range 7W County: Rio Arriba
Surface Owner: ☒ Federal ☐ State ☐ Private ☐ Tribal Trust or Indian Allotment

2.
☒ **Recycling Facility:**
Location of recycling facility (if applicable): Latitude 32.225553" N Longitude 107.520556 "W NAD83
Proposed Use: ☒ Drilling* ☒ Completion* ☒ Production* ☐ Plugging *
**The re-use of produced water may NOT be used until fresh water zones are cased and cemented*
☐ Other, *requires permit for other uses. Describe use, process, testing, volume of produced water and ensure there will be no adverse impact on groundwater or surface water.*
☒ Fluid Storage
☒ Above ground tanks ☐ Activity permitted under 19.15.17 NMAC explain type _____
☐ Activity permitted under 19.15.36 NMAC explain type: _____ ☐ Other explain _____
☐ **Closure Report (required within 60 days of closure completion):** ☐ Recycling Facility Closure Completion Date: _____

3.
Variances:
Justifications and/or demonstrations that the proposed variance will afford reasonable protection against contamination of fresh water, human health, and the environment.
Check the below box only if a variance is requested:
☒ Variance(s): Requests must be submitted to the appropriate division district for consideration of approval. If a Variance is requested, include the variance information on a separate page and attach it to the C-147 as part of the application.
If a Variance is requested, it must be approved prior to implementation.

4.
Operator Application Certification:
I hereby certify that the information and attachments submitted with this application are true, accurate and complete to the best of my knowledge and belief.
Name (Print): John Volkerding Title: Gen Mgr
Signature: [Signature] Date: 9/17/18
e-mail address: jvolkerding@basindisposalinc.com Telephone: 505-334-3014

5.
OCD Representative Signature: _____ Approval/Registration Date: _____
Title: _____ OCD Permit Number: _____
☐ OCD Conditions _____
☐ Additional OCD Conditions on Attachment

**Basin Water Recycling
Lybrook Facility
Variance Explanation for Recycling Containment
Modification 9-17-18**

C-147 #3. Recycling Containment

19.15.34.12.E NMAC states "Netting. The operator shall ensure that a recycling containment is screened, netted or otherwise protective of wildlife, including migratory birds.. "

In Basin Disposal's original C-147 application dated 6/10/15 Basin Disposal requested a variance from screening and netting and proposed installing a floating roof on the containment.

After operating the facility, while from a perspective of being protective of wildlife, minimizing evaporation, minimizing algae growth, and controlling odors the Rhombo Hexoshield® is an outstanding product, Basin Disposal concurs with the concerns raised by the NM OCD that the balls make it difficult to identify if/when oil may be on the surface of the containment an additionally the balls make it difficult to remove any such oil as required by 19.15.34.13 B(1) NMAC.

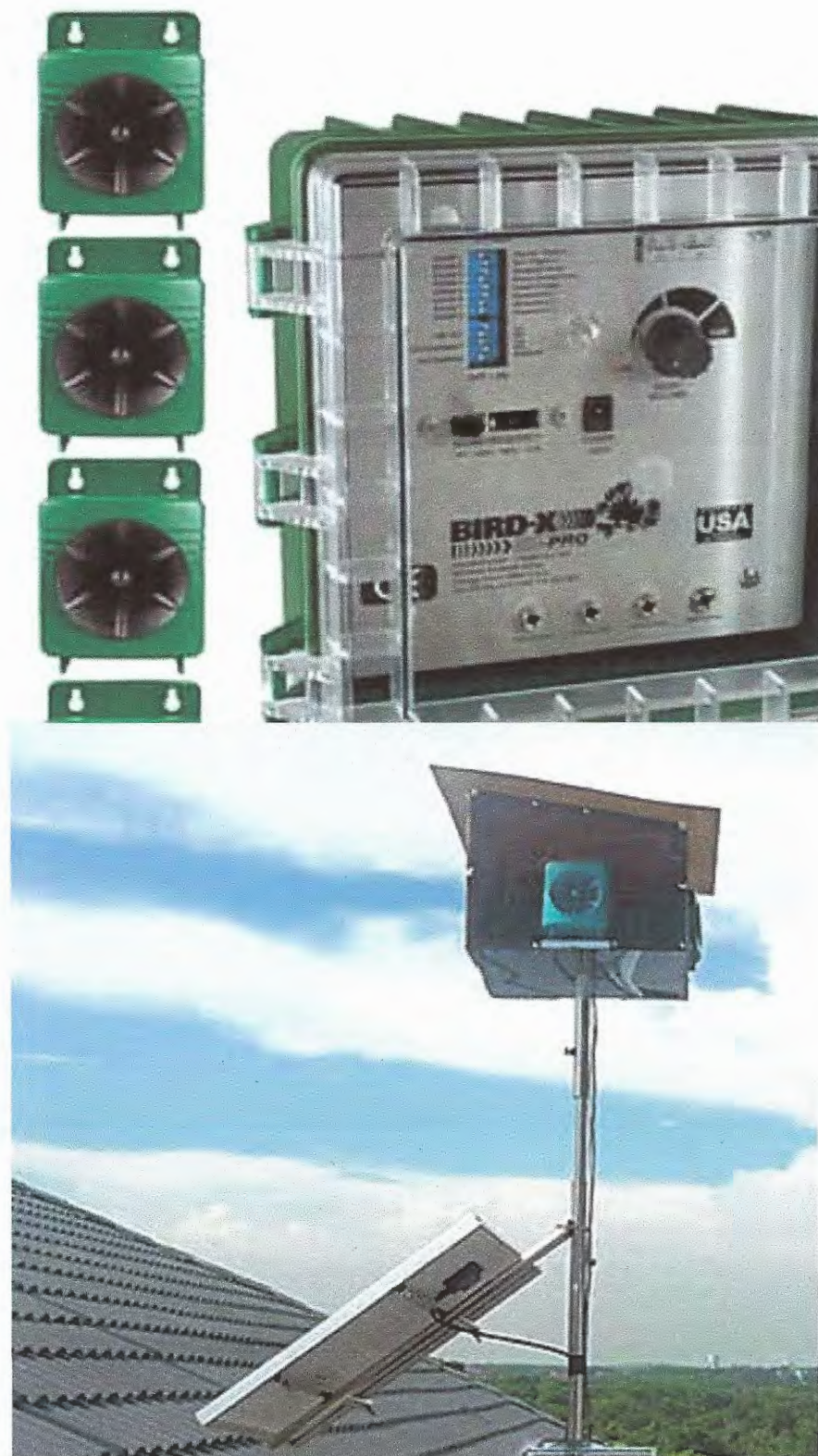
Basin Disposal proposes some or all of the following Bird Control Measures:

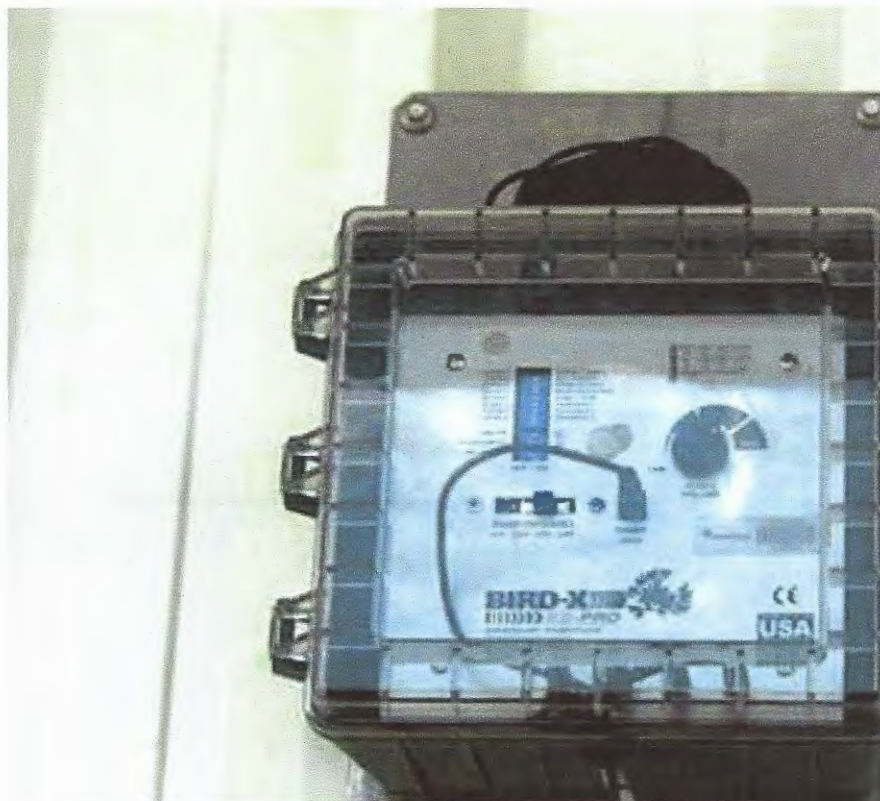
- BroadBand PRO 4-speaker sonic and ultrasonic bird repeller
- Terror Eyes
- Prowler Owls
- Bird X Laser

By implementing some or all of these we are dettracting birds with visual and audible repellants. The list provides Basin Disposal the flexibility to utilize the technologies that are most effective without requesting a subsequent modification to add or subtract technologies.

Since the commencement of operations in the fall of 2015, Basin Disposal has observed no birds ever in the recycling containment.







BroadBand PRO 4-speaker sonic and ultrasonic bird repeller

Combines SONIC and ULTRASONIC technology

Repel birds with multi-faceted sonic and ultrasonic sounds! The BroadBand PRO's 4-speaker system simultaneously emits sounds that are both audible and inaudible to humans that confuse, disorient, and intimidate pest birds, keeping them away. Birds will not linger when exposed to these sounds!

- Covers up to 6 acres
- Uses sonic and ultrasonic technology
- Weather resistant box designed to withstand outdoor use
- Includes installation consultation
- 60 Day Electronics Performance Satisfaction Guarantee

With both ultrasonic and sonic frequencies, pest birds won't stand a chance! Use this versatile electronic bird repeller outdoors or in semi-enclosed locations, with coverage up to 6 acres. Four speakers included – each with 100 ft. of wire. Fully programmable – control volume, sound delays, and daylight/night operation.

This industry favorite is used worldwide, protecting facilities from damage and liability. Bird-X provides bird control solutions for hundreds of top-tier corporate clients including: UPS, Boeing, Coca-Cola, American Airlines, Wrigley Field, US Air Force, Army, Navy, and many more.

Effective Against:

pigeons, sparrows, starlings, crows, blackbirds, grackles, seagulls, swallows, woodpeckers, bats, rodents, and more

Dimensions	Control Unit 9" x 9" x 5", Speakers 4" x 4" x 6"
Box dimensions	19" x 13" x 8" / Shipping weight: 10 lbs
Speakers	8 ohms, 75 watts
Frequency	15-25 KHz
Coverage	Up to 3,600 sq. ft (ultrasonic), up to 6 acres (sonic)
Power Requirements	110vAC (220vAC available)
Cord	110v, 220v and 240v cords are 6 ft
Sound Pressure	Ultrasonic sounds 95–102 dB (each speaker) at 1 meter, Sonic 105–110 dB (each speaker) at 1 meter
Frequency	Ultrasonic 15–25 kHz, Sonic 3–5 kHz
Compliance	Supply power source is UL and CE listed
EPA Est.	075130-OR-001
Body	Weatherproof box
Warranty	60 Day Electronics Performance Satisfaction Guarantee









Terror Eyes®

Terror Eyes' bright colors and fierce features mimic natural predators. Holographic eyes create the illusion of a predator following pest birds to attack, while moving organically with the wind. It is easy to install and requires little to no maintenance.

- ✓ 3D Visual Scare Device
- ✓ Reduces Damages
- ✓ Inexpensive, Effective Solution

Details

- Predator decoy; 3D balloon
- Weatherproof, vinyl, inflatable balloon
- Markings exaggerate the glaring stare & gaping mouth of natural predators
- Holographic material creates the illusion that the eyes are following pest birds
- Wind causes the inflatable Terror Eyes® to move in the wind, increasing efficacy
- Easy installation

Applications

Effective wherever visible, up to once acre of open space.

Effectively Repels:

- Pigeons
- Ducks and Geese
- Scagulls
- Sparrows and Starlings
- Woodpeckers
- Crows
- Blackbirds
- Grackles
- Swallows
- Other Birds
- Rabbits, Roents
- Skunks and other small animals

Ideal For Use At:

- Indoors and Outdoors
- Farms and Barns
- Golf Courses, Parks, and Public Spaces
- Car and Parking Lots
- Yards, Gardens, Porches, and Patios
- Fields, Barns, Orchards, and Vineyards
- Infrastructure and Transportation
- Boats, Harbors, Docks, and Marinas
- Homes, Garages, and Rooftops
- Warehouses, Loading Docks and Hangers
- Any large open or semi-enclosed space

Benefits

- Cut down on cleanup and repair costs
- Protect buildings, equipment, and vehicles from corrosive bird droppings
- Reduce health and liability risks associated with pest bird infestation
- Prevent the spread of diseases, such as West Nile, Salmonella and E. Coli
- Eliminate fire hazards caused by birds building nests in vents and chimneys
- Avoid government and safety inspection failures
- Save outdoor grounds from bird damage
- Increase property aesthetics
- Decrease nuisance for residents, workers, customers, etc.

Specifications

- Balloon diameter: 19" (inflated) / about 27" (deflated)
- Box dimensions: 12" x 9" x 2"
- 2 lbs



Prowler Owl

Scare away birds and small pests with this predator replica of the most-feared aerial predator, the Great Horned Owl, which catches and eats nearly everything in its path. Without movement, an owl scare is useless – don't be fooled by imitations that are immobile! Install Prowler Owl decoy in any open outdoor area where pest birds or small critters are a problem.

- ✓ **Proven Realistic Visual Scare**
- ✓ **Saves Money on Cleanup and Repair**
- ✓ **4-Foot Wingspan Moves in the Wind**

Decades-proven visual deterrent, improved with dynamic realism and movement!

- Accurate plumage and hunting flight pose
- Intimidating, glassy eyes “follow” pests
- 4-foot wingspan and accurate markings
- Owl scare decoy repels pest birds and other small animals
- Flexible wings move and flap in the wind realistically

Applications

Recommended for use wherever birds & small critters are a problem. Effective where visible for up to 6,000 sq. ft.

Effectively Repels:

- Pigeons
- Seagulls and Gulls
- Grackles
- Crows
- Blackbirds
- Sparrows
- Starlings
- Barn Swallows
- Also works on rodents, rabbits, squirrels, and more

Ideal For Use At:

- Parks, Fields, Bushes, and Trees
- Yards and Gardens
- Rooftops and Patios
- Near Light Poles and Telephone Poles
- Waterfront Property and Businesses

- Airports and Transportation Platforms
- Marinas and Boat Docks
- Farm Fields, Orchards, and Vineyards
- Warehouses and Manufacturing Facilities

Benefits

- Cut recurring cleanup and repair costs
- Protect buildings and equipment from corrosive bird droppings
- Reduce health and liability risks associated with pest bird infestation
- Prevent the spread of diseases, such as West Nile, Salmonella and E. Coli
- Eliminate fire hazards caused by birds building nests in vents and chimneys
- Avoid government and safety inspection failures
- Save outdoor grounds from bird damage
- Increase property aesthetics
- Decrease bird nuisance

Specifications

- Dimensions: 44" wingspan, 23" total head-to-tail, 6" head diameter
- Box dimensions: 12" x 8" x 13" / 2 lbs
- Materials: Head is hard plastic resin, body/wing is extra-durable, waterproof non-woven fabric supported by flexible cables and riveted plastic struts
- Mounting: Place neck opening on a ½" diameter pole

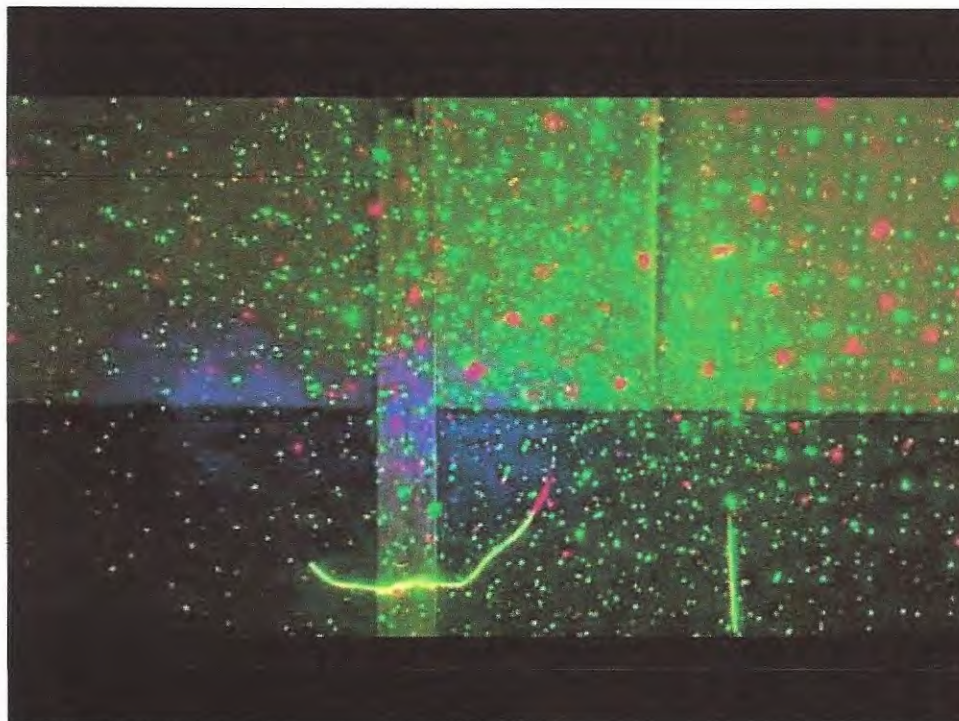




Bird-X Laser for Outdoors

The state of the art Bird-X Outdoor Laser uses randomized laser patterns in colors birds hate, forcing them to find somewhere calmer to land.

- ✓ SILENT – scares away birds with visuals, not sound
- ✓ FLEXIBLE – 10,000 square feet of coverage for outdoor use
- ✓ CONSTANT – works day and night



With a range of up to 10,000 square feet, the unrelenting red and green lasers of the Bird-X Laser for Outdoors will irritate and alarm birds, bats, and small mammal pest species without traps or chemicals. Powerful Class 3R “fat beam” laser diodes create multiple random patterns that prevent birds from acclimating and keeps them away!

The Bird-X Laser for Outdoors is pre-programmed, weather-resistant, and can be used night or day in darker areas. It comes ready to mount with included bracket. The convenient and flexible coverage makes it perfect for outdoor spaces like golf courses and corporate grounds. Plus, it comes with a 30-Day satisfaction guarantee to assure your unwanted guests are gone for good!

Effective Against:

pigeons, swallows, seagulls, ducks, grackles, crows, blackbirds, sparrows, starlings, cormorants, bats, rodents, and small critters

Uses:

warehouses and manufacturing plants, barns and stables, storages sheds, parking garages and lots, car washes, tunnels, underpasses, breezeways, sports arenas and convention centers, loading docks and transportation platforms, airplane hangars, boat houses, facilities and corporate grounds, apartments and condo buildings, walkways

Dimensions	10" x 10" x 8"
Weight	3.31 lbs / 1.5 kg
Laser Power	Red – 650nm100mW, Green – 532nm50mW
Unit Power	1mW Red + 1mW Green
Power	AC 100v-240v at 50/60Hz
Electric Current	100mA
Classification	3R
Fuse	2A
Housing	Casting Aluminum
Beam Divergence	60°
Operating Temperature	-68 to 104°F / -20 to 40°C
Safe Temperature for Use	– 50 to 95°F / -10 to 35°C

State of New Mexico
Energy Minerals and Natural Resources
Department
Oil Conservation Division
1220 South St. Francis Dr.
Santa Fe, NM 87505

District I

1625 N. French Dr., Hobbs, NM 88240

District II

811 S. First St., Artesia, NM 88210

District III

1000 Rio Brazos Road, Aztec, NM 87410

District IV

1220 S. St. Francis Dr., Santa Fe, NM 87505

Operator Name Basin Water RecyclingOGRID 

I certify all recycling containments associated with our recycling facilities are using >20% of the containments' total fluid capacity every 6 months until closure in compliance with 19.15.34.13(C) NMAC.

Month/Year June 2020

Admin. #	Produced water received*	Other fluid received*	Volume discharged for Recycling/Reuse*
3RF-2	1,250	0	1,500

*Report volumes in barrels

Admin. #	Produced water received*	Other fluid received*	Volume discharged for Recycling/Reuse*

Oil Conservation Division

*Report volumes in barrels

OGRID _____

Month/Year July 2020

[illegible]

Admin. #	Produced water received*	Other fluid received*	Volume discharged for Recycling/Reuse*

State of New Mexico
Energy Minerals and Natural Resources
Department
Oil Conservation Division
1220 South St. Francis Dr.
Santa Fe, NM 87505

District I

1625 N. French Dr., Hobbs, NM 88240

District II

811 S. First St., Artesia, NM 88210

District III

1000 Rio Brazos Road, Aztec, NM 87410

District IV

1220 S. St. Francis Dr., Santa Fe, NM 87505

Operator Name Basin Water RecyclingOGRID 

I certify all recycling containments associated with our recycling facilities are using >20% of the containments' total fluid capacity every 6 months until closure in compliance with 19.15.34.13(C) NMAC.

Month/Year August 2020

Admin. #	Produced water received*	Other fluid received*	Volume discharged for Recycling/Reuse*
3RF-2	500	0	0

*Report volumes in barrels

Admin. #	Produced water received*	Other fluid received*	Volume discharged for Recycling/Reuse*

Oil Conservation Division

*Report volumes in barrels

OGRID _____

Month/Year September 2020

[illegible]

Admin. #	Produced water received*	Other fluid received*	Volume discharged for Recycling/Reuse*

Oil Conservation Division

*Report volumes in barrels

OGRID _____

Month/Year October 2020

[illegible]

Admin. #	Produced water received*	Other fluid received*	Volume discharged for Recycling/Reuse*

Oil Conservation Division

*Report volumes in barrels

OGRID _____

Month/Year November 2020

[illegible]

Admin. #	Produced water received*	Other fluid received*	Volume discharged for Recycling/Reuse*

Admin. #	Produced water received*	Other fluid received*	Volume discharged for Recycling/Reuse*

State of New Mexico
Energy Minerals and Natural Resources
Department
Oil Conservation Division
1220 South St. Francis Dr.
Santa Fe, NM 87505

District I
1625 N. French Dr., Hobbs, NM 88240
District II
811 S. First St., Artesia, NM 88210
District III
1000 Rio Brazos Road, Aztec, NM 87410
District IV
1220 S. St. Francis Dr., Santa Fe, NM 87505

Operator Name Basin Water RecyclingOGRID 

I certify all recycling containments associated with our recycling facilities are using >20% of the containments' total fluid capacity every 6 months until closure in compliance with 19.15.34.13(C) NMAC.

Month/Year January 2021

Admin. #	Produced water received*	Other fluid received*	Volume discharged for Recycling/Reuse*
3RF-2	0	0	0

*Report volumes in barrels

Admin. #	Produced water received*	Other fluid received*	Volume discharged for Recycling/Reuse*

State of New Mexico
Energy Minerals and Natural Resources
Department
Oil Conservation Division
1220 South St. Francis Dr.
Santa Fe, NM 87505

District I
1625 N. French Dr., Hobbs, NM 88240
District II
811 S. First St., Artesia, NM 88210
District III
1000 Rio Brazos Road, Aztec, NM 87410
District IV
1220 S. St. Francis Dr., Santa Fe, NM 87505

Operator Name Basin Water RecyclingOGRID 

I certify all recycling containments associated with our recycling facilities are using >20% of the containments' total fluid capacity every 6 months until closure in compliance with 19.15.34.13(C) NMAC.

Month/Year February 2021

Admin. #	Produced water received*	Other fluid received*	Volume discharged for Recycling/Reuse*
3RF-2	0	0	0

*Report volumes in barrels

Admin. #	Produced water received*	Other fluid received*	Volume discharged for Recycling/Reuse*

State of New Mexico
Energy Minerals and Natural Resources
Department
Oil Conservation Division
1220 South St. Francis Dr.
Santa Fe, NM 87505

District I
1625 N. French Dr., Hobbs, NM 88240
District II
811 S. First St., Artesia, NM 88210
District III
1000 Rio Brazos Road, Aztec, NM 87410
District IV
1220 S. St. Francis Dr., Santa Fe, NM 87505

Operator Name Basin Water Recycling

OGRID _____

☐ I certify all recycling containments associated with our recycling facilities are using >20% of the containments' total fluid capacity every 6 months until closure in compliance with 19.15.34.13(C) NMAC.

Month/Year March 2021

Admin. #	Produced water received*	Other fluid received*	Volume discharged for Recycling/Reuse*
3RF-2	0	0	0

*Report volumes in barrels

Admin. #	Produced water received*	Other fluid received*	Volume discharged for Recycling/Reuse*

State of New Mexico
Energy Minerals and Natural Resources
Department
Oil Conservation Division
1220 South St. Francis Dr.
Santa Fe, NM 87505

District I
1625 N. French Dr., Hobbs, NM 88240

District II
811 S. First St., Artesia, NM 88210

District III
1000 Rio Brazos Road, Aztec, NM 87410

District IV
1220 S. St. Francis Dr., Santa Fe, NM 87505

Operator Name Basin Water Recycling

OGRID _____



☒ I certify all recycling containments associated with our recycling facilities are using >20% of the containments' total fluid capacity every 6 months until closure in compliance with 19.15.34.13(C) NMAC.

Month/Year April 2021

[illegible]

*Report volumes in barrels

Admin. #	Produced water received*	Other fluid received*	Volume discharged for Recycling/Reuse*

Oil Conservation Division

*Report volumes in barrels

OGRID _____

Month/Year May 2021

[illegible]

Admin. #	Produced water received*	Other fluid received*	Volume discharged for Recycling/Reuse*

BASIN WATER RECYCLING Containment Inspection

Basin Operations/SOPS/Daily Inspection

2021
YEAR 2020 MONTH 6 WEEK BEGINNING 6-9-21

ate	Sun	Mon	Tues	Wed 9	Thu	Fri	Sat
-----	-----	-----	------	-------	-----	-----	-----

Weather

Temperature, °F				70			
Skies (clear, pt cldy, cloudy)				clear			
Precipitation (last 24 hr), Inches				—			
Wind Speed (mph)				0			
Wind Direction				—			

Containment Surface

Migratory Birds Present (Y/N)				N			
(if yes, what action taken?)							
Bird Deterrent Operational (Y/N)				Y			
(if no, what is done)	Will order new equipment as some is becoming weathered ✓						
Oil on Surface (Y/N)				N			
(if yes, was it removed?)							
(if not removed, why/when)							

Containment Inspection

Depth of Containment Water, ft				27			
3 ft Freeboard Maintained (Y/N)				✓			
(if no, what is done)							
Strutural Defect (Y,N) *				N			
(if yes, what and actions?)							
Leak Detected (Y/N)				N			
(if yes, what and actions?)							
Run On/Off Water Present (Y/N)				N			
Comments							
Verification							
Initials and Time				OV			

BASIN WATER RECYCLING Containment Inspection

YEAR 2021 MONTH June WEEK BEGINNING _____

	Sun <u>30</u>	Mon <u>31</u>	Tues <u>1</u>	Wed <u>2</u>	Thu <u>3</u>	Fri <u>4</u>	Sat <u>5</u>
--	---------------	---------------	---------------	--------------	--------------	--------------	--------------

Weather

Temperature, °F				<u>80</u>			
Skies (clear, pt cldy, cloudy)				<u>pt cldy</u>			
Precipitation (last 24 hr), Inches				<u>—</u>			
Wind Speed (mph)				<u>15</u>			
Wind Direction				<u>WSW</u>			

Containment Surface

Migratory Birds Present (Y/N)				<u>N</u>			
(if yes, what action taken?)							
Bird Deterrent Operational (Y/N)				<u>Y</u>			
(if no, what is done)							
Oil on Surface (Y/N)				<u>N</u>			
(if yes, was it removed?)							
(if not removed, why/when)							

Containment Inspection

Depth of Containment Water, ft				<u>2'9"</u>			
3 ft Freeboard Maintained (Y/N)				<u>Y</u>			
(if no, what is done)							
Structural Defect (Y,N) *				<u>N</u>			
(if yes, what and actions?)							
Leak Detected (Y/N)				<u>N</u>			
(if yes, what and actions?)							
On/Off Water Present (Y/N)				<u>N</u>			
Comments							
Verification							
Initials and Time				<u>1245 PM</u>			

BASIN WATER RECYCLING **Containment Inspection**

Basin Operations/SOPS/Daily Inspection

 YEAR 2021 MONTH 5 WEEK BEGINNING _____

Day	Sun <u>23</u>	Mon <u>24</u>	Tues <u>25</u>	Wed <u>26</u>	Thu <u>27</u>	Fri <u>28</u>	Sat <u>29</u>
-----	---------------	---------------	----------------	---------------	---------------	---------------	---------------

Weather							
Temperature, °F			72				
Skies (clear, pt cldy, cloudy)			Partly				
Precipitation (last 24 hr), Inches			—				
Wind Speed (mph)			5				
Wind Direction			W				

Containment Surface							
Migratory Birds Present (Y/N)			N				
(if yes, what action taken?)							
Bird Deterrent Operational (Y/N)			Y				
(if no, what is done)							
Oil on Surface (Y/N)			N				
(if yes, was it removed?)							
(if not removed, why/when)							

Containment Inspection							
Depth of Containment Water, ft			2'9"				
3 ft Freeboard Maintained (Y/N)			Y				
(if no, what is done)							
Strutural Defect (Y,N) *			N				
(if yes, what and actions?)							
Leak Detected (Y/N)			N				
(if yes, what and actions?)							
On On/Off Water Present (Y/N)			N				
Comments							
Verification							
Intials and Time			1230 JV				

BASIN WATER RECYCLING Containment Inspection

YEAR 2021 MONTH May WEEK BEGINNING _____

Site	Sun <u>16</u>	Mon <u>17</u>	Tues <u>18</u>	Wed <u>19</u>	Thu <u>20</u>	Fri <u>21</u>	Sat <u>22</u>
------	---------------	---------------	----------------	---------------	---------------	---------------	---------------

Weather

Temperature, °F						69	
Skies (clear, pt cldy, cloudy)						pt cldy	
Precipitation (last 24 hr), Inches						-	
Wind Speed (mph)						4	
Wind Direction						SW	

Containment Surface

Migratory Birds Present (Y/N)						Y	
(if yes, what action taken?)							
Bird Deterrent Operational (Y/N)						Y	
(if no, what is done)							
Oil on Surface (Y/N)						N Y	
(if yes, was it removed?)							
(if not removed, why/when)							

Containment Inspection

Depth of Containment Water, ft						210"	
3 ft Freeboard Maintained (Y/N)						Y	
(if no, what is done)							
Structural Defect (Y,N) *						Y	
(if yes, what and actions?)							
Leak Detected (Y/N)						Y	
(if yes, what and actions?)							
On/Off Water Present (Y/N)						Y	
Comments							
Verification							
Initials and Time						1138 AM	

YEAR 2021 MONTH May WEEK BEGINNING _____

Date	Sun 9	Mon 10	Tues 11	Wed 12	Thu 13	Fri 14	Sat 15
Weather							
Temperature, °F	70						
Skies (clear, pt cldy, cloudy)	pt cldy						
Precipitation (last 24 hr), Inches	-						
Wind Speed (mph)	5						
Wind Direction	S						
Containment Surface							
Migratory Birds Present (Y/N)	N						
(if yes, what action taken?)							
Bird Deterrent Operational (Y/N)	Y						
(if no, what is done)							
Oil on Surface (Y/N)	N						
(if yes, was it removed?)							
(if not removed, why/when)							
Containment Inspection							
Depth of Containment Water, ft	210						
3 ft Freeboard Maintained (Y/N)	Y						
(if no, what is done)							
Structural Defect (Y,N) *	N						
(if yes, what and actions?)							
Leak Detected (Y/N)	N						
(if yes, what and actions?)							
Run On/Off Water Present (Y/N)	N						
Comments							
Verification							
Initials and Time	11 AM						

BASIN WATER RECYCLING Containment Inspection

Basin Operations/SOPS/Daily inspection

 YEAR 2021 MONTH 5 WEEK BEGINNING _____

te	Sun <u>2</u>	Mon <u>3</u>	Tues <u>4</u>	Wed <u>5</u>	Thu <u>6</u>	Fri <u>7</u>	Sat <u>8</u>
----	--------------	--------------	---------------	--------------	--------------	--------------	--------------

Weather

Temperature, °F	<u>70</u>						
Skies (clear, pt cldy, cloudy)	<u>pt</u>						
Precipitation (last 24 hr), Inches							
Wind Speed (mph)	<u>5</u>						
Wind Direction	<u>W</u>						

Containment Surface

Migratory Birds Present (Y/N)	<u>N</u>						
(if yes, what action taken?)							
Bird Deterrent Operational (Y/N)	<u>Y</u>						
(if no, what is done)							
Oil on Surface (Y/N)	<u>N</u>						
(if yes, was it removed?)							
(if not removed, why/when)							

Containment Inspection

Depth of Containment Water, ft	<u>2.10</u>						
3 ft Freeboard Maintained (Y/N)	<u>Y</u>						
(if no, what is done)							
Structural Defect (Y,N) *	<u>N</u>						
(if yes, what and actions?)							
Leak Detected (Y/N)	<u>N</u>						
(if yes, what and actions?)							
Oil On/Off Water Present (Y/N)	<u>N</u>						
Comments							
Verification							
Initials and Time	<u>1205</u>						

BASIN WATER RECYCLING Containment Inspection

YEAR 2021 MONTH April WEEK BEGINNING _____

May

Site	Sun 25	Mon 26	Tues 27	Wed 28	Thu 29	Fri 30	Sat
------	--------	--------	---------	--------	--------	--------	-----

Weather

Temperature, °F						75	
Skies (clear, pt cldy, cloudy)						clr	
Precipitation (last 24 hr), Inches						-	
Wind Speed (mph)						5	
Wind Direction						S	

Containment Surface

Migratory Birds Present (Y/N)						N	
(if yes, what action taken?)							
Bird Deterrent Operational (Y/N)						Y	
(if no, what is done)							
Oil on Surface (Y/N)						N	
(if yes, was it removed?)							
(if not removed, why/when)							

Containment Inspection

Depth of Containment Water, ft						2'11	
3 ft Freeboard Maintained (Y/N)						Y	
(if no, what is done)							
Structural Defect (Y/N) *						N	
(if yes, what and actions?)							
Leak Detected (Y/N)						N	
(if yes, what and actions?)							
Oil On/Off Water Present (Y/N)						N	
Comments							
Verification							
Initials and Time						JV 6:10 PM	

BASIN WATER RECYCLING **Containment Inspection**

YEAR 2021 MONTH 4 WEEK BEGINNING _____

	Sun <u>18</u>	Mon <u>19</u>	Tues <u>20</u>	Wed <u>21</u>	Thu <u>22</u>	Fri <u>23</u>	Sat <u>24</u>
--	---------------	---------------	----------------	---------------	---------------	---------------	---------------

Weather

Temperature, °F			<u>47</u>				
Skies (clear, pt cldy, cloudy)			<u>pt cldy</u>				
Precipitation (last 24 hr), Inches			<u>-</u>				
Wind Speed (mph)			<u>5</u>				
Wind Direction			<u>W</u>				

Containment Surface

Migratory Birds Present (Y/N)			<u>N</u>				
(if yes, what action taken?)							
Bird Deterrent Operational (Y/N)			<u>Y</u>				
(if no, what is done)							
Oil on Surface (Y/N)			<u>N</u>				
(if yes, was it removed?)							
(if not removed, why/when)							

Containment Inspection

Depth of Containment Water, ft			<u>2.11</u>				
3 ft Freeboard Maintained (Y/N)			<u>Y</u>				
(if no, what is done)							
Structural Defect (Y/N) *			<u>N</u>				
(if yes, what and actions?)							
Leak Detected (Y/N)			<u>N</u>				
(if yes, what and actions?)							
Oil On/Off Water Present (Y/N)			<u>N</u>				
Comments							
Verification							
Initials and Time			<u>JV 930</u>				

BASIN WATER RECYCLING **Containment Inspection**

Basin Operations/SOPS/Daily inspection

YEAR 2021 MONTH April WEEK BEGINNING _____

ate	Sun 11	Mon 12	Tues 13	Wed 14	Thu 15	Fri 16	Sat 17
-----	--------	--------	---------	--------	--------	--------	--------

Weather

Temperature, °F				70			
Skies (clear, pt cldy, cloudy)				cl-			
Precipitation (last 24 hr), Inches				/			
Wind Speed (mph)				10			
Wind Direction				S			

Containment Surface

Migratory Birds Present (Y/N)				N			
(if yes, what action taken?)							
Bird Deterrent Operational (Y/N)				Y			
(if no, what is done)							
Oil on Surface (Y/N)				N			
(if yes, was it removed?)							
(if not removed, why/when)							

Containment Inspection

Depth of Containment Water, ft				2'11			
3 ft Freeboard Maintained (Y/N)				Y			
(if no, what is done)							
Structural Defect (Y,N) *				N			
(if yes, what and actions?)							
Leak Detected (Y/N)				N			
(if yes, what and actions?)							
On On/Off Water Present (Y/N)				N			
Comments							
Verification							
Initials and Time				IV 245			

YEAR 2021 MONTH WEEK BEGINNING

Date	Sun 4	Mon 5	Tues 6	Wed 7	Thu 8	Fri 9	Sat 10
Weather							
Temperature, °F		72					
Skies (clear, pt cldy, cloudy)		clr					
Precipitation (last 24 hr), Inches		-					
Wind Speed (mph)		5					
Wind Direction		WSW					
Containment Surface							
Migratory Birds Present (Y/N)		✓					
(if yes, what action taken?)							
Bird Deterrent Operational (Y/N)		Y					
(if no, what is done)							
Oil on Surface (Y/N)		✓					
(if yes, was it removed?)							
(if not removed, why/when)							
Containment Inspection							
Depth of Containment Water, ft		3					
3 ft Freeboard Maintained (Y/N)		Y					
(if no, what is done)							
Structural Defect (Y,N) *		✓					
(if yes, what and actions?)							
Leak Detected (Y/N)		✓					
(if yes, what and actions?)							
Run On/Off Water Present (Y/N)		✓					
Comments							
Verification							
Initials and Time		12/10 P					

BASIN WATER RECYCLING Containment Inspection

Basin Operations/SOPS/Daily inspection

YEAR 2021 MONTH Mon/Apr WEEK BEGINNING

te	Sun <u>28</u>	Mon <u>29</u>	Tues <u>30</u>	Wed <u>31</u>	Thu <u>1</u>	Fri <u>2</u>	Sat <u>3</u>
----	---------------	---------------	----------------	---------------	--------------	--------------	--------------

Weather

Temperature, °F					<u>66</u>		
Skies (clear, pt cldy, cloudy)					<u>Pt cldy</u>		
Precipitaion (last 24 hr), Inches					<u>-</u>		
Wind Speed (mph)					<u>8</u>		
Wind Direction					<u>SW</u>		

Containment Surface

Migratory Birds Present (Y/N)					<u>N</u>		
(if yes, what action taken?)							
Bird Deterrent Operational (Y/N)					<u>Y</u>		
(if no, what is done)							
Oil on Surface (Y/N)					<u>N</u>		
(if yes, was it removed?)							
(if not removed, why/when)							

Containment Inspection

Depth of Containment Water, ft					<u>3</u>		
3 ft Freeboard Maintained (Y/N)					<u>Y</u>		
(if no, what is done)							
Strutural Defect (Y,N) *					<u>N</u>		
(if yes, what and actions?)							
Leak Detected (Y/N)					<u>N</u>		
(if yes, what and actions?)							
Oil On/Off Water Present (Y/N)					<u>N</u>		
Comments							
Verification							
Intials and Time					<u>255 P</u>		

BASIN WATER RECYCLING **Containment Inspection**

Basin Operations/SOPS/Daily inspection

YEAR 2021 MONTH 3 WEEK BEGINNING _____

te	Sun 21	Mon 22	Tues 23	Wed 24	Thu 25	Fri 26	Sat 27
----	--------	--------	---------	--------	--------	--------	--------

Weather

Temperature, °F							38
Skies (clear, pt cldy, cloudy)							pt cldy
Precipitation (last 24 hr), Inches							—
Wind Speed (mph)							3
Wind Direction							S

Containment Surface

Migratory Birds Present (Y/N)							N
(if yes, what action taken?)							
Bird Deterrent Operational (Y/N)							Y
(if no, what is done)							
Oil on Surface (Y/N)							N Y
(if yes, was it removed?)							
(if not removed, why/when)							

Containment Inspection

Depth of Containment Water, ft							3
3 ft Freeboard Maintained (Y/N)							
(if no, what is done)							
Structural Defect (Y,N) *							N
(if yes, what and actions?)							
Leak Detected (Y/N)							N
(if yes, what and actions?)							
Run On/Off Water Present (Y/N)							N
Comments							
Verification							
Initials and Time							JV 930

YEAR 2021 MONTH March WEEK BEGINNING _____

Date	Sun 14	Mon 15	Tues 16	Wed 17	Thu 18	Fri 19	Sat 20
Weather							
Temperature, °F			51				
Skies (clear, pt cldy, cloudy)			P+Clgy				
Precipitation (last 24 hr), Inches			—				
Wind Speed (mph)			4				
Wind Direction			SE				
Containment Surface							
Migratory Birds Present (Y/N)			N				
(if yes, what action taken?)							
Bird Deterrent Operational (Y/N)			Y				
(if no, what is done)							
Oil on Surface (Y/N)			N				
(if yes, was it removed?)							
(if not removed, why/when)							
Containment Inspection							
Depth of Containment Water, ft			3				
3 ft Freeboard Maintained (Y/N)			Y				
(if no, what is done)							
Structural Defect (Y,N) *			N				
(if yes, what and actions?)							
Leak Detected (Y/N)			N				
(if yes, what and actions?)							
Run On/Off Water Present (Y/N)			N				
Comments							
Verification							
Initials and Time			JV 1130				

BASIN WATER RECYCLING Containment Inspection

YEAR 2021 MONTH March WEEK BEGINNING

Date	Sun 7	Mon 8	Tues 9	Wed 10	Thu 11	Fri 12	Sat 13
------	-------	-------	--------	--------	--------	--------	--------

Weather							
Temperature, °F						60	
Skies (clear, pt cldy, cloudy)						pt cldy	
Precipitation (last 24 hr), Inches							
Wind Speed (mph)						20	
Wind Direction						S	

Containment Surface							
Migratory Birds Present (Y/N)						N	
(if yes, what action taken?)							
Bird Deterrent Operational (Y/N)						Y	
(if no, what is done)							
Oil on Surface (Y/N)						Y	
(if yes, was it removed?)							
(if not removed, why/when)							

Containment Inspection							
Depth of Containment Water, ft						3	
3 ft Freeboard Maintained (Y/N)						Y	
(if no, what is done)							
Strutural Defect (Y,N) *						N	
(if yes, what and actions?)							
Leak Detected (Y/N)						N	
(if yes, what and actions?)							
On/Off Water Present (Y/N)						N	
Comments							
Verification							
Intials and Time						SV 3PM	

BASIN WATER RECYCLING **Containment Inspection**

Basin Operations/SOPS/Daily inspection

YEAR 2021 MONTH 2/3 WEEK BEGINNING _____

Site	Sun <u>28</u>	Mon <u>1</u>	Tues <u>2</u>	Wed <u>3</u>	Thu <u>4</u>	Fri <u>5</u>	Sat <u>6</u>
------	---------------	--------------	---------------	--------------	--------------	--------------	--------------

Weather

Temperature, °F						<u>46</u>	
Skies (clear, pt cldy, cloudy)						<u>pt cldy</u>	
Precipitation (last 24 hr), Inches						<u>-</u>	
Wind Speed (mph)						<u>0</u>	
Wind Direction							

Containment Surface

Migratory Birds Present (Y/N)						<u>N</u>	
(if yes, what action taken?)							
Bird Deterrent Operational (Y/N)						<u>Y</u>	
(if no, what is done)							
Oil on Surface (Y/N)						<u>N</u>	
(if yes, was it removed?)							
(if not removed, why/when)							

Containment Inspection

Depth of Containment Water, ft						<u>3</u>	
3 ft Freeboard Maintained (Y/N)						<u>Y</u>	
(if no, what is done)							
Structural Defect (Y,N) *						<u>N</u>	
(if yes, what and actions?)							
Leak Detected (Y/N)						<u>N</u>	
(if yes, what and actions?)							
On/Off Water Present (Y/N)						<u>N</u>	
Comments							
Verification							
Initials and Time						<u>JV</u>	

BASIN WATER RECYCLING **Containment Inspection**

Basin Operations/SOPS/Daily inspection

 YEAR 2021 MONTH Feb WEEK BEGINNING _____

te	Sun <u>21</u>	Mon <u>22</u>	Tues <u>23</u>	Wed <u>24</u>	Thu <u>25</u>	Fri <u>26</u>	Sat <u>27</u>
----	---------------	---------------	----------------	---------------	---------------	---------------	---------------

Weather							
Temperature, °F		40					
Skies (clear, pt cldy, cloudy)		pt cldy					
Precipitation (last 24 hr), Inches		—					
Wind Speed (mph)		5					
Wind Direction		NE					

Containment Surface							
Migratory Birds Present (Y/N)		N					
(if yes, what action taken?)							
Bird Deterrent Operational (Y/N)		Y					
(if no, what is done)							
Oil on Surface (Y/N)		N					
(if yes, was it removed?)							
(if not removed, why/when)							

Containment Inspection							
Depth of Containment Water, ft		3					
3 ft Freeboard Maintained (Y/N)		Y					
(if no, what is done)							
Strutural Defect (Y,N) *		✓					
(if yes, what and actions?)							
Leak Detected (Y/N)		✓					
(if yes, what and actions?)							
Oil On/Off Water Present (Y/N)		✓					
Comments							
Verification							
Initials and Time		JV 1100					

BASIN WATER RECYCLING **Containment Inspection**

Basin Operations/SOPS/Daily Inspection

2021
YEAR 2019 MONTH 2-15² WEEK BEGINNING 2-15-21

	Sun	Mon	Tues	Wed	Thu	Fri	Sat
--	-----	-----	------	-----	-----	-----	-----

Weather

Temperature, °F		40					
Skies (clear, pt cldy, cloudy)		pt cld					
Precipitation (last 24 hr), Inches		-					
Wind Speed (mph)		3					
Wind Direction		N-12					

Containment Surface

Migratory Birds Present (Y/N)							
(if yes, what action taken?)							
Bird Deterrent Operational (Y/N)							
(if no, what is done)							
Oil on Surface (Y/N)							
(if yes, was it removed?)							
(if not removed, why/when)							

Containment Inspection

Depth of Containment Water, ft							
3 ft Freeboard Maintained (Y/N)		4					
(if no, what is done)							
Structural Defect (Y,N) *		N					
(if yes, what and actions?)							
Leak Detected (Y/N)		N					
(if yes, what and actions?)							
On/Off Water Present (Y/N)		N					
Comments	SANDY ORANGE TANK						
Verification							
Initials and Time		OC					

BASIN WATER RECYCLING Containment Inspection

Basin Operations/SOPS/Daily Inspection

2021
YEAR 2019 MONTH Feb WEEK BEGINNING 2/7

Site	Sun	Mon	Tues	Wed 10	Thu	Fri	Sat
------	-----	-----	------	--------	-----	-----	-----

Weather

Temperature, °F				41			
Skies (clear, pt cldy, cloudy)				pt cldy			
Precipitation (last 24 hr), Inches				—			
Wind Speed (mph)				8			
Wind Direction				N → S			

Containment Surface

Migratory Birds Present (Y/N)				N			
(if yes, what action taken?)							
Bird Deterrent Operational (Y/N)				Y			
(if no, what is done)							
Oil on Surface (Y/N)							
(if yes, was it removed?)							
(if not removed, why/when)							

Containment Inspection

Depth of Containment Water, ft							
3 ft Freeboard Maintained (Y/N)				Y			
(if no, what is done)							
Structural Defect (Y,N) *				N			
(if yes, what and actions?)							
Leak Detected (Y/N)				N			
(if yes, what and actions?)							
Run On/Off Water Present (Y/N)				N			
Comments	Snow present around Tank						
Verification							
Initials and Time				JV 9:50 AM			

BASIN WATER RECYCLING Containment Inspection

Basin Operations/SOPS/Daily Inspection

YEAR 2019 MONTH Jan / Feb WEEK BEGINNING 1/31

Date	Sun 31	Mon 1	Tues 2	Wed 3	Thu 4	Fri 5	Sat 6
------	--------	-------	--------	-------	-------	-------	-------

Weather

Temperature, °F					40		
Skies (clear, pt cldy, cloudy)					Partly		
Precipitation (last 24 hr), Inches					-		
Wind Speed (mph)					6		
Wind Direction					W		

Containment Surface

Migratory Birds Present (Y/N)					N		
(if yes, what action taken?)							
Bird Deterrent Operational (Y/N)					Y		
(if no, what is done)							
Oil on Surface (Y/N)					N		
(if yes, was it removed?)							
(if not removed, why/when)							

Containment Inspection

Depth of Containment Water, ft					3		
3 ft Freeboard Maintained (Y/N)					Y		
(if no, what is done)							
Structural Defect (Y,N) *					N		
(if yes, what and actions?)							
Leak Detected (Y/N)					N		
(if yes, what and actions?)							
Run On/Off Water Present (Y/N)					N		
Comments	Snow Present						

Verification

Initials and Time					1239 P JV		
-------------------	--	--	--	--	--------------	--	--

BASIN WATER RECYCLING Containment Inspection

Basin Operations/SOPS/Daily Inspection

 2021
 YEAR 2019 MONTH Jan WEEK BEGINNING

Date	Sun 24	Mon 25	Tues 26	Wed 27	Thu 28	Fri 29	Sat 30
------	--------	--------	---------	--------	--------	--------	--------

Weather

Temperature, °F				36			
Skies (clear, pt cldy, cloudy)				cldy			
Precipitation (last 24 hr), Inches				Snowing			
Wind Speed (mph)				0			
Wind Direction				—			

Containment Surface

Migratory Birds Present (Y/N)				✓			
(if yes, what action taken?)							
Bird Deterrent Operational (Y/N)				✓			
(if no, what is done)							
Oil on Surface (Y/N)				✓			
(if yes, was it removed?)							
(if not removed, why/when)							

Containment Inspection

Depth of Containment Water, ft				3			
3 ft Freeboard Maintained (Y/N)				✓			
(if no, what is done)							
Strutural Defect (Y,N) *				✓			
(if yes, what and actions?)							
Leak Detected (Y/N)				✓			
(if yes, what and actions?)							
Oil On/Off Water Present (Y/N)				✓			
Comments							
Verification							
Initials and Time				330 PM JV			

BASIN WATER RECYCLING Containment Inspection

YEAR 2019 MONTH JAN WEEK BEGINNING _____

Date _____ Sun 12 Mon 18 Tues 19 Wed 20 Thu 21 Fri 22 Sat 23

Weather

Temperature, °F			32				
Skies (clear, pt cldy, cloudy)			Partly				
Precipitation (last 24 hr), Inches			—				
Wind Speed (mph)			9				
Wind Direction			SE				

Containment Surface

Migratory Birds Present (Y/N)			N				
(if yes, what action taken?)							
Bird Deterrent Operational (Y/N)			Y				
(if no, what is done)							
Oil on Surface (Y/N)			N				
(if yes, was it removed?)							
(if not removed, why/when)							

Containment Inspection

Depth of Containment Water, ft			3				
3 ft Freeboard Maintained (Y/N)			Y				
(if no, what is done)							
Structural Defect (Y,N) *			N				
(if yes, what and actions?)							
Leak Detected (Y/N)			N				
(if yes, what and actions?)							
Run On/Off Water Present (Y/N)			N				
Comments							
Verification							
Initials and Time			1145 AM				

21
YEAR 2019 MONTH 1 WEEK BEGINNING

Date	Sun 10	Mon 11	Tues 12	Wed 13	Thu 14	Fri 15	Sat 16
Weather							
Temperature, °F					49		
Skies (clear, pt cldy, cloudy)					pt cldy		
Precipitation (last 24 hr), Inches					—		
Wind Speed (mph)					7		
Wind Direction					wnw		
Containment Surface							
Migratory Birds Present (Y/N)					N		
(if yes, what action taken?)							
Bird Deterrent Operational (Y/N)					Y		
(if no, what is done)							
Oil on Surface (Y/N)					N		
(if yes, was it removed?)							
(if not removed, why/when)							
Containment Inspection							
Depth of Containment Water, ft					3		
3 ft Freeboard Maintained (Y/N)					Y		
(if no, what is done)							
Structural Defect (Y,N) *					N		
(if yes, what and actions?)							
Leak Detected (Y/N)					N		
(if yes, what and actions?)							
Run On/Off Water Present (Y/N)					N		
Comments							
Verification							
Initials and Time					3400M		

BASIN WATER RECYCLING
Containment Inspection

2021
YEAR 2019 MONTH Jan WEEK BEGINNING

Date	Sun 3	Mon 4	Tues 5	Wed 6	Thu 7	Fri 8	Sat 9
Weather							
Temperature, °F			46				
Skies (clear, pt cldy, cloudy)			CLR				
Precipitation (last 24 hr), Inches			—				
Wind Speed (mph)			15				
Wind Direction			FW				
Containment Surface							
Migratory Birds Present (Y/N)			N				
(if yes, what action taken?)							
Bird Deterrent Operational (Y/N)			Y				
(if no, what is done)							
Oil on Surface (Y/N)			N				
(if yes, was it removed?)							
(if not removed, why/when)							
Containment Inspection							
Depth of Containment Water, ft			3				
3 ft Freeboard Maintained (Y/N)			N Y				
(if no, what is done)							
Structural Defect (Y,N) *			N				
(if yes, what and actions?)							
Leak Detected (Y/N)			N				
(if yes, what and actions?)							
Run On/Off Water Present (Y/N)			N				
Comments							
Verification							
Initials and Time			DV 1220				

BASIN WATER RECYCLING **Containment Inspection**

YEAR 2019 MONTH WEEK BEGINNING

Date Sun 27 Mon 28 Tues 29 Wed 30 Thu 31 Fri 1 Sat 2

Weather							
Temperature, °F							36
Skies (clear, pt cldy, cloudy)							Partly
Precipitation (last 24 hr), Inches							-
Wind Speed (mph)							7
Wind Direction							NNE

Containment Surface							
Migratory Birds Present (Y/N)							N
(if yes, what action taken?)							
Bird Deterrent Operational (Y/N)							Y
(if no, what is done)							
Oil on Surface (Y/N)							N
(if yes, was it removed?)							
(if not removed, why/when)							

Containment Inspection							
Depth of Containment Water, ft							3
3 ft Freeboard Maintained (Y/N)							Y
(if no, what is done)							
Structural Defect (Y,N) *							N
(if yes, what and actions?)							
Leak Detected (Y/N)							N
(if yes, what and actions?)							
Run On/Off Water Present (Y/N)							N
Comments							
Verification							
Initials and Time							250 PM

YEAR ~~2019~~ ²⁰²⁰ MONTH 12 WEEK BEGINNING _____

Date	Sun 20	Mon 21	Tues 22	Wed 23	Thu 24	Fri 25	Sat 26
Weather							
Temperature, °F		32					
Skies (clear, pt cldy, cloudy)		pt cldy					
Precipitation (last 24 hr), Inches		—					
Wind Speed (mph)		1-2					
Wind Direction		E					
Containment Surface							
Migratory Birds Present (Y/N)		N					
(if yes, what action taken?)							
Bird Deterrent Operational (Y/N)		Y					
(if no, what is done)							
Oil on Surface (Y/N)		N					
(if yes, was it removed?)							
(if not removed, why/when)							
Containment Inspection							
Depth of Containment Water, ft		3					
3 ft Freeboard Maintained (Y/N)		Y					
(if no, what is done)							
Structural Defect (Y,N) *		N					
(if yes, what and actions?)							
Leak Detected (Y/N)		N					
(if yes, what and actions?)							
Run On/Off Water Present (Y/N)		N					
Comments							
Verification							
Initials and Time		10:10 JV					

BASIN WATER RECYCLING **Containment Inspection**

YEAR 2020 MONTH Dec WEEK BEGINNING _____

Date	Sun <u>13</u>	Mon <u>14</u>	Tues <u>15</u>	Wed <u>16</u>	Thu <u>17</u>	Fri <u>18</u>	Sat <u>19</u>
------	---------------	---------------	----------------	---------------	---------------	---------------	---------------

Weather							
Temperature, °F			23				
Skies (clear, pt cldy, cloudy)			Partly				
Precipitation (last 24 hr), Inches			—				
Wind Speed (mph)			1-2				
Wind Direction			E				

Containment Surface							
Migratory Birds Present (Y/N)			N				
(if yes, what action taken?)							
Bird Deterrent Operational (Y/N)			Y				
(if no, what is done)							
Oil on Surface (Y/N)			N				
(if yes, was it removed?)							
(if not removed, why/when)							

Containment Inspection							
Depth of Containment Water, ft			3				
3 ft Freeboard Maintained (Y/N)			Y				
(if no, what is done)							
Structural Defect (Y,N) *			N				
(if yes, what and actions?)							
Leak Detected (Y/N)			N				
(if yes, what and actions?)							
Oil On/Off Water Present (Y/N)			N				
Comments							
Verification							
Initials and Time			TYS AM JV				

BASIN WATER RECYCLING **Containment Inspection**

YEAR 2019 MONTH Dec WEEK BEGINNING _____

ate	Sun <u>6</u>	Mon <u>7</u>	Tues <u>8</u>	Wed <u>9</u>	Thu <u>10</u>	Fri <u>11</u>	Sat <u>12</u>
-----	--------------	--------------	---------------	--------------	---------------	---------------	---------------

Weather							
Temperature, °F							34
Skies (clear, pt cldy, cloudy)							Partly
Precipitation (last 24 hr), Inches							some
Wind Speed (mph)							1-2
Wind Direction							SW

Containment Surface							
Migratory Birds Present (Y/N)							N
(if yes, what action taken?)							
Bird Deterrent Operational (Y/N)							Y
(if no, what is done)							
Oil on Surface (Y/N)							N
(if yes, was it removed?)							
(if not removed, why/when)							

Containment Inspection							
Depth of Containment Water, ft							3
3 ft Freeboard Maintained (Y/N)							Y
(if no, what is done)							
Strutural Defect (Y,N) *							N
(if yes, what and actions?)							
Leak Detected (Y/N)							N
(if yes, what and actions?)							
Oil On/Off Water Present (Y/N)							N
Comments							
Verification							
Initials and Time							345 N

BASIN WATER RECYCLING **Containment Inspection**

Basin Operations/SOPS/Daily Inspection

2020
YEAR 2019 MONTH 11/12 WEEK BEGINNING _____

Date	Sun <u>29</u>	Mon <u>30</u>	Tues <u>01</u>	Wed <u>02</u>	Thu <u>3</u>	Fri <u>4</u>	Sat <u>5</u>
------	---------------	---------------	----------------	---------------	--------------	--------------	--------------

Weather							
Temperature, °F					36		
Skies (clear, pt cldy, cloudy)					Pt cldy		
Precipitation (last 24 hr), Inches					-		
Wind Speed (mph)					0		
Wind Direction							

Containment Surface							
Migratory Birds Present (Y/N)					N		
(if yes, what action taken?)							
Bird Deterrent Operational (Y/N)					Y		
(if no, what is done)							
Debris on Surface (Y/N)					N		
(if yes, was it removed?)							
(if not removed, why/when)							

Containment Inspection							
Depth of Containment Water, ft					3		
3 ft Freeboard Maintained (Y/N)					Y		
(if no, what is done)							
Strutural Defect (Y,N) *					N		
(if yes, what and actions?)							
Leak Detected (Y/N)					N		
(if yes, what and actions?)							
Oil On/Off Water Present (Y/N)					N		
Comments							
Verification							
Initials and Time					JV 1040 AM		

YEAR 2019 MONTH WEEK BEGINNING

Date	Sun 22	Mon 23	Tues 24	Wed 25	Thu 26	Fri 27	Sat 28
Weather							
Temperature, °F	48						
Skies (clear, pt cldy, cloudy)	Ptcl						
Precipitation (last 24 hr), Inches	—						
Wind Speed (mph)	7						
Wind Direction	S						
Containment Surface							
Migratory Birds Present (Y/N)	N						
(if yes, what action taken?)							
Bird Deterrent Operational (Y/N)	Y						
(if no, what is done)							
Oil on Surface (Y/N)	N						
(if yes, was it removed?)							
(if not removed, why/when)							
Containment Inspection							
Depth of Containment Water, ft	3						
3 ft Freeboard Maintained (Y/N)	Y						
(if no, what is done)							
Structural Defect (Y,N) *	N						
(if yes, what and actions?)							
Leak Detected (Y/N)	N						
(if yes, what and actions?)							
Run On/Off Water Present (Y/N)	N						
Comments							
Verification							
Initials and Time	JV 534 PM						

BASIN WATER RECYCLING **Containment Inspection**

Basin Operations/SOPS/Daily Inspection

YEAR 2020 MONTH 11 WEEK BEGINNING _____

Date	Sun 15	Mon 16	Tues 17	Wed 18	Thu 19	Fri 20	Sat 21
------	--------	--------	---------	--------	--------	--------	--------

Weather

Temperature, °F						61	
Skies (clear, pt cldy, cloudy)						cl	
Precipitation (last 24 hr), Inches						—	
Wind Speed (mph)						0	
Wind Direction							

Containment Surface

Migratory Birds Present (Y/N)						N	
(if yes, what action taken?)							
Bird Deterrent Operational (Y/N)						Y	
(if no, what is done)							
Oil on Surface (Y/N)						Y	
(if yes, was it removed?)							
(if not removed, why/when)							

Containment Inspection

Depth of Containment Water, ft						3	
3 ft Freeboard Maintained (Y/N)						Y	
(if no, what is done)							
Structural Defect (Y,N) *						N	
(if yes, what and actions?)							
Leak Detected (Y/N)						N	
(if yes, what and actions?)							
Oil On/Off Water Present (Y/N)						N	
Comments							
Verification							
Initials and Time						JV 4:10 PM	

BASIN WATER RECYCLING **Containment Inspection**

Basin Operations/SOPS/Daily Inspection

YEAR 2019²⁰ MONTH Nov WEEK BEGINNING _____

ate	Sun	Mon	Tues	Wed	Thu	Fri	Sat
	8	9	10	11	12	13	14

Weather

Temperature, °F				50			
Skies (clear, pt cldy, cloudy)				CLR			
Precipitaion (last 24 hr), Inches				—			
Wind Speed (mph)				3			
Wind Direction				S			

Containment Surface

Migratory Birds Present (Y/N)				N			
(if yes, what action taken?)							
Bird Deterrant Operational (Y/N)				Y			
(if no, what is done)							
Oil on Surface (Y/N)				N			
(if yes, was it removed?)							
(if not removed, why/when)							

Containment Inspection

Depth of Containment Water, ft				3			
3 ft Freeboard Maintained (Y/N)				Y			
(if no, what is done)							
Strutural Defect (Y,N) *				N			
(if yes, what and actions?)							
Leak Detected (Y/N)				N			
(if yes, what and actions?)							
On/Off Water Present (Y/N)				N			
Comments							
Verification							
Intials and Time				JV 1210P			

BASIN WATER RECYCLING **Containment Inspection**

YEAR ²⁰~~2019~~ MONTH 11 WEEK BEGINNING _____

Date	Sun <u>2</u>	Mon <u>3</u>	Tues <u>3</u>	Wed <u>4</u>	Thu <u>5</u>	Fri <u>6</u>	Sat <u>7</u>
------	--------------	--------------	---------------	--------------	--------------	--------------	--------------

Weather

Temperature, °F				<u>65</u>			
Skies (clear, pt cldy, cloudy)				<u>CLR</u>			
Precipitaion (last 24 hr), Inches				<u>—</u>			
Wind Speed (mph)				<u>12</u>			
Wind Direction				<u>W-E</u>			

Containment Surface

Migratory Birds Present (Y/N)				<u>N</u>			
(if yes, what action taken?)							
Bird Deterrant Operational (Y/N)				<u>Y</u>			
(if no, what is done)							
on Surface (Y/N)				<u>N</u>			
(if yes, was it removed?)							
(if not removed, why/when)							

Containment Inspection

Depth of Containment Water, ft				<u>3</u>			
3 ft Freeboard Maintained (Y/N)				<u>Y</u>			
(if no, what is done)							
Strutural Defect (Y,N) *				<u>N</u>			
(if yes, what and actions?)							
Leak Detected (Y/N)				<u>N</u>			
(if yes, what and actions?)							
On On/Off Water Present (Y/N)				<u>N</u>			
Comments							

Verification

Intials and Time				<u>SV 1130</u>			
------------------	--	--	--	----------------	--	--	--

BASIN WATER RECYCLING **Containment Inspection**

Basin Operations/SOPS/Daily Inspection

YEAR 2020 MONTH Oct WEEK BEGINNING _____

ate	Sun 25	Mon 26	Tues 27	Wed 28	Thu 29	Fri 30	Sat 31
-----	--------	--------	---------	--------	--------	--------	--------

Weather

Temperature, °F		29					
Skies (clear, pt cldy, cloudy)		clh					
Precipitaion (last 24 hr), Inches		-					
Wind Speed (mph)		1					
Wind Direction		-					

Containment Surface

Migratory Birds Present (Y/N)		N					
(if yes, what action taken?)							
Bird Deterrant Operational (Y/N)		Y					
(if no, what is done)							
on Surface (Y/N)		N					
(if yes, was it removed?)							
(if not removed, why/when)							

Containment Inspection

Depth of Containment Water, ft		3					
3 ft Freeboard Maintained (Y/N)		Y					
(if no, what is done)							
Strutural Defect (Y,N) *		N					
(if yes, what and actions?)							
Leak Detected (Y/N)		N					
(if yes, what and actions?)							
On On/Off Water Present (Y/N)		N					
Comments							
Verification							
Intials and Time		JV 950A					

BASIN WATER RECYCLING Containment Inspection

Basin Operations/SOPS/Daily Inspection

2020
YEAR 2019 MONTH 10 WEEK BEGINNING _____

Site	Sun 18	Mon 19	Tues 20	Wed 21	Thu 22	Fri 23	Sat 24
------	--------	--------	---------	--------	--------	--------	--------

Weather

Temperature, °F							SS
Skies (clear, pt cldy, cloudy)							CLR
Precipitation (last 24 hr), Inches							—
Wind Speed (mph)							0
Wind Direction							—

Containment Surface

Migratory Birds Present (Y/N)							N
(if yes, what action taken?)							
Bird Deterrent Operational (Y/N)							Y
(if no, what is done)							
Oil on Surface (Y/N)							N
(if yes, was it removed?)							
(if not removed, why/when)							

Containment Inspection

Depth of Containment Water, ft							3
3 ft Freeboard Maintained (Y/N)							Y
(if no, what is done)							
Structural Defect (Y,N) *							N
(if yes, what and actions?)							
Leak Detected (Y/N)							N
(if yes, what and actions?)							
On/Off Water Present (Y/N)							N
Comments							
Verification							
Initials and Time							JV 930A

BASIN WATER RECYCLING **Containment Inspection**

Basin Operations/SOPS/Daily Inspection

YEAR 2020 MONTH Oct WEEK BEGINNING _____

Date	Sun 11	Mon 12	Tues 13	Wed 14	Thu 15	Fri 16	Sat 17
------	--------	--------	---------	--------	--------	--------	--------

Weather

Temperature, °F			58				
Skies (clear, pt cldy, cloudy)			Clr				
Precipitation (last 24 hr), Inches			—				
Wind Speed (mph)			14				
Wind Direction			NWS				

Containment Surface

Migratory Birds Present (Y/N)			N				
(if yes, what action taken?)							
Bird Deterrent Operational (Y/N)			N				
(if no, what is done)							
Oil on Surface (Y/N)			N				
(if yes, was it removed?)							
(if not removed, why/when)							

Containment Inspection

Depth of Containment Water, ft			3				
3 ft Freeboard Maintained (Y/N)			Y				
(if no, what is done)							
Structural Defect (Y,N) *			N				
(if yes, what and actions?)							
Leak Detected (Y/N)			N				
(if yes, what and actions?)							
Run On/Off Water Present (Y/N)			N				
Comments							
Verification							
Initials and Time			8:50 AM				

BASIN WATER RECYCLING Containment Inspection

YEAR 2020 MONTH 10 WEEK BEGINNING

Date	Sun 4	Mon 5	Tues 6	Wed 7	Thu 8	Fri 9	Sat 10
------	-------	-------	--------	-------	-------	-------	--------

Weather

Temperature, °F						80	
Skies (clear, pt cldy, cloudy)						clr	
Precipitation (last 24 hr), Inches						-	
Wind Speed (mph)						12	
Wind Direction						WSEW	

Containment Surface

Migratory Birds Present (Y/N)						N	
(if yes, what action taken?)							
Bird Deterrent Operational (Y/N)						Y	
(if no, what is done)							
Oil on Surface (Y/N)						N	
(if yes, was it removed?)							
(if not removed, why/when)							

Containment Inspection

Depth of Containment Water, ft						3	
3 ft Freeboard Maintained (Y/N)						Y	
(if no, what is done)							
Structural Defect (Y,N) *						N	
(if yes, what and actions?)							
Leak Detected (Y/N)						N	
(if yes, what and actions?)							
Run On/Off Water Present (Y/N)						N	
Comments							
Verification							
Initials and Time						SV 1230	

BASIN WATER RECYCLING Containment Inspection

YEAR 2020

MONTH

WEEK BEGINNING

ate	Sun 9/27	Mon 28	Tues 29	Wed 30	Thu 1	Fri 2	Sat 3
-----	----------	--------	---------	--------	-------	-------	-------

Weather

Temperature, °F				65			
Skies (clear, pt cldy, cloudy)				cr			
Precipitation (last 24 hr), Inches				—			
Wind Speed (mph)				12			
Wind Direction				N7S			

Containment Surface

Migratory Birds Present (Y/N)				N			
(if yes, what action taken?)							
Bird Deterrent Operational (Y/N)				Y			
(if no, what is done)							
Oil on Surface (Y/N)				N			
(if yes, was it removed?)							
(if not removed, why/when)							

Containment Inspection

Depth of Containment Water, ft				3			
3 ft Freeboard Maintained (Y/N)				Y			
(if no, what is done)							
Structural Defect (Y,N) *				N			
(if yes, what and actions?)							
Leak Detected (Y/N)				N			
(if yes, what and actions?)							
Run On/Off Water Present (Y/N)				N			
Comments							
Verification							
Initials and Time				JV 1050			

BASIN WATER RECYCLING Containment Inspection

Basin Operations/SOPS/Daily inspection

YEAR 2020 MONTH 9 WEEK BEGINNING

Date	Sun 20	Mon 21	Tues 22	Wed 23	Thu 24	Fri 25	Sat 26
------	--------	--------	---------	--------	--------	--------	--------

Weather

Temperature, °F			65				
Skies (clear, pt cldy, cloudy)			cloudy				
Precipitation (last 24 hr), Inches			0.00				
Wind Speed (mph)			00				
Wind Direction			S				

Containment Surface

Migratory Birds Present (Y/N)			N				
(if yes, what action taken?)							
Bird Deterrent Operational (Y/N)			N				
(if no, what is done)							
Oil on Surface (Y/N)			N				
(if yes, was it removed?)							
(if not removed, why/when)							

Containment Inspection

Depth of Containment Water, ft			2.9				
3 ft Freeboard Maintained (Y/N)							
(if no, what is done)							
Structural Defect (Y,N) *							
(if yes, what and actions?)							
Leak Detected (Y/N)			N				
(if yes, what and actions?)							
Run On/Off Water Present (Y/N)			N				
Comments							
Verification							
Initials and Time			PL 20:27				

BASIN WATER RECYCLING Containment Inspection

Basin Operations/SOPS/Daily Inspection

YEAR 2020 MONTH 9 WEEK BEGINNING 9-13-20

Date	Sun 13	Mon 14	Tues 15	Wed 16	Thu 17	Fri 18	Sat 19
------	--------	--------	---------	--------	--------	--------	--------

Weather

Temperature, °F		80	.	.			
Skies (clear, pt cldy, cloudy)		cloudy					
Precipitation (last 24 hr), Inches		2					
Wind Speed (mph)		4					
Wind Direction		S					

Containment Surface

Migratory Birds Present (Y/N)		N					
(if yes, what action taken?)							
Bird Deterrent Operational (Y/N)		N					
(if no, what is done)							
Oil on Surface (Y/N)		N					
(if yes, was it removed?)							
(if not removed, why/when)							

Containment Inspection

Depth of Containment Water, ft		2' 9"					
3 ft Freeboard Maintained (Y/N)							
(if no, what is done)							
Structural Defect (Y,N) *							
(if yes, what and actions?)							
Leak Detected (Y/N)		N					
(if yes, what and actions?)							
Run On/Off Water Present (Y/N)		N					
Comments							
Verification							
Initials and Time		OC RPM					

BASIN WATER RECYCLING **Containment Inspection**

Basin Operations/SOPS/Daily Inspection

YEAR 2020 MONTH 9 WEEK BEGINNING _____

Date	Sun 6	Mon 7	Tues 8	Wed 9	Thu 10	Fri 11	Sat 12
------	-------	-------	--------	-------	--------	--------	--------

Weather

Temperature, °F						88°	
Skies (clear, pt cldy, cloudy)						clear	
Precipitation (last 24 hr), Inches						0	
Wind Speed (mph)						3	
Wind Direction						E	

Containment Surface

Migratory Birds Present (Y/N)						N	
(if yes, what action taken?)							
Bird Deterrent Operational (Y/N)						N	
(if no, what is done)							
Oil on Surface (Y/N)						N	
(if yes, was it removed?)							
(if not removed, why/when)							

Containment Inspection

Depth of Containment Water, ft						2.11	
3 ft Freeboard Maintained (Y/N)							
(if no, what is done)							
Structural Defect (Y,N) *							
(if yes, what and actions?)							
Leak Detected (Y/N)						N	
(if yes, what and actions?)							
Run On/Off Water Present (Y/N)						N	
Comments							
Verification							
Initials and Time						OC 12pm	

BASIN WATER RECYCLING Containment Inspection

Basin Operations/SOPS/Daily Inspection

YEAR 2020 MONTH 8 WEEK BEGINNING 800

ate	Sun	Mon	Tues	Wed	Thu	Fri	Sat
	30	31	1	2	3	4	5

Weather

Temperature, °F		93					
Skies (clear, pt cldy, cloudy)		clear					
Precipitaion (last 24 hr), Inches		0					
Wind Speed (mph)		0					
Wind Direction		S					

Containment Surface

Migratory Birds Present (Y/N)		N					
(if yes, what action taken?)							
Bird Deterrent Operational (Y/N)		N					
(if no, what is done)							
Oil on Surface (Y/N)		N					
(if yes, was it removed?)							
(if not removed, why/when)							

Containment Inspection

Depth of Containment Water, ft		3.0					
3 ft Freeboard Maintained (Y/N)							
(if no, what is done)							
Strutural Defect (Y,N) *							
(if yes, what and actions?)							
Leak Detected (Y/N)		N					
(if yes, what and actions?)							
Run On/Off Water Present (Y/N)		N					
Comments							
Verification		OC					
Intials and Time		3pm					

BASIN WATER RECYCLING Containment Inspection

YEAR 2020

MONTH

8

WEEK BEGINNING

8-23-20

Date	Sun 23	Mon 24	Tues 25	Wed 26	Thu 27	Fri 28	Sat 29
------	--------	--------	---------	--------	--------	--------	--------

Weather

Temperature, °F				90			
Skies (clear, pt cldy, cloudy)				clear			
Precipitation (last 24 hr), Inches				0.0			
Wind Speed (mph)				2			
Wind Direction				E			

Containment Surface

Migratory Birds Present (Y/N)				N			
(if yes, what action taken?)							
Bird Deterrent Operational (Y/N)				N			
(if no, what is done)							
Oil on Surface (Y/N)				N			
(if yes, was it removed?)							
(if not removed, why/when)							

Containment Inspection

Depth of Containment Water, ft			0	3.1			
3 ft Freeboard Maintained (Y/N)							
(if no, what is done)							
Structural Defect (Y,N) *							
(if yes, what and actions?)							
Leak Detected (Y/N)				N			
(if yes, what and actions?)							
Run On/Off Water Present (Y/N)				N			
Comments							
Verification	OC						
Initials and Time				4:10 PM			

BASIN WATER RECYCLING Containment Inspection

Basin Operations/SOPS/Daily Inspection

YEAR 2020 MONTH 8 WEEK BEGINNING 8

Site	Sun 16	Mon 17	Tues 18	Wed 19	Thu 20	Fri 21	Sat 22
------	--------	--------	---------	--------	--------	--------	--------

Weather							
Temperature, °F		75					
Skies (clear, pt cldy, cloudy)		Clear					
Precipitation (last 24 hr), Inches		0.00					
Wind Speed (mph)		29					
Wind Direction		S					

Containment Surface							
Migratory Birds Present (Y/N)		N					
(if yes, what action taken?)							
Bird Deterrent Operational (Y/N)		N					
(if no, what is done)							
Oil on Surface (Y/N)		N					
(if yes, was it removed?)							
(if not removed, why/when)							

Containment Inspection							
Depth of Containment Water, ft		3'4"					
3 ft Freeboard Maintained (Y/N)							
(if no, what is done)							
Strutural Defect (Y,N) *							
(if yes, what and actions?)							
Leak Detected (Y/N)		N	N				
(if yes, what and actions?)							
Run On/Off Water Present (Y/N)		N					
Comments							
Verification							
Initials and Time		OC					
		3:00					

BASIN WATER RECYCLING **Containment Inspection**

Basin Operations/SOPS/Daily inspection

 YEAR 2020 MONTH 8 WEEK BEGINNING _____

te	Sun <u>9</u>	Mon <u>10</u>	Tues <u>11</u>	Wed <u>12</u>	Thu <u>13</u>	Fri <u>14</u>	Sat <u>15</u>
----	--------------	---------------	----------------	---------------	---------------	---------------	---------------

Weather

Temperature, °F			<u>84</u>				
Skies (clear, pt cldy, cloudy)			<u>clear</u>				
Precipitaion (last 24 hr), Inches			<u>0</u>				
Wind Speed (mph)			<u>2</u>				
Wind Direction			<u>N</u>				

Containment Surface

Migratory Birds Present (Y/N)			<u>N</u>				
(if yes, what action taken?)							
Bird Deterrent Operational (Y/N)			<u>N</u>				
(if no, what is done)							
Oil on Surface (Y/N)			<u>N</u>				
(if yes, was it removed?)							
(if not removed, why/when)							

Containment Inspection

Depth of Containment Water, ft			<u>2.4</u>				
3 ft Freeboard Maintained (Y/N)							
(if no, what is done)							
Strutural Defect (Y,N) *							
(if yes, what and actions?)							
Leak Detected (Y/N)			<u>N</u>				
(if yes, what and actions?)							
Run On/Off Water Present (Y/N)			<u>N</u>				
Comments							
Verification							
Initials and Time			<u>OC</u> <u>11:00pm</u>				

BASIN WATER RECYCLING Containment Inspection

Basin Operations/SOPS/Daily Inspection

 YEAR 2019 80 MONTH 7 WEEK BEGINNING 7-26-20

Date	Sun <u>26</u>	Mon <u>27</u>	Tues <u>28</u>	Wed <u>29</u>	Thu <u>30</u>	Fri <u>31</u>	Sat <u>1</u>
------	---------------	---------------	----------------	---------------	---------------	---------------	--------------

Weather

Temperature, °F				<u>93°</u>			
Skies (clear, pt cldy, cloudy)				<u>clear</u>			
Precipitation (last 24 hr), Inches				<u>0</u>			
Wind Speed (mph)				<u>5</u>			
Wind Direction				<u>SE</u>			

Containment Surface

Migratory Birds Present (Y/N)				<u>N</u>			
(if yes, what action taken?)							
Bird Deterrent Operational (Y/N)				<u>N</u>			
(if no, what is done)							
Oil on Surface (Y/N)				<u>N</u>			
(if yes, was it removed?)							
(if not removed, why/when)							

Containment Inspection

Depth of Containment Water, ft				<u>2.5</u>			
3 ft Freeboard Maintained (Y/N)							
(if no, what is done)							
Structural Defect (Y,N) *							
(if yes, what and actions?)							
Leak Detected (Y/N)				<u>N</u>			
(if yes, what and actions?)							
Run On/Off Water Present (Y/N)				<u>N</u>			
Comments							
Verification	<u>OC</u>						
Initials and Time				<u>2/PM</u>			

BASIN WATER RECYCLING **Containment Inspection**

Basin Operations/SOPS/Daily Inspection

YEAR 2020 MONTH 7 WEEK BEGINNING 7-19-20

Site	Sun 19	Mon 20	Tues 21	Wed 22	Thu 23	Fri 24	Sat 25
------	--------	--------	---------	--------	--------	--------	--------

Weather

Temperature, °F					8.2		
Skies (clear, pt cldy, cloudy)					CLAWY		
Precipitation (last 24 hr), Inches					0		
Wind Speed (mph)					4		
Wind Direction					S 12		

Containment Surface

Migratory Birds Present (Y/N)					N		
(if yes, what action taken?)							
Bird Deterrent Operational (Y/N)					N		
(if no, what is done)							
Oil on Surface (Y/N)					N		
(if yes, was it removed?)							
(if not removed, why/when)							

Containment Inspection

Depth of Containment Water, ft					2.6		
3 ft Freeboard Maintained (Y/N)							
(if no, what is done)							
Structural Defect (Y,N) *							
(if yes, what and actions?)							
Leak Detected (Y/N)					N		
(if yes, what and actions?)							
Oil On/Off Water Present (Y/N)					N		
Comments							
Verification	OC						
Initials and Time					1:PM		

BASIN WATER RECYCLING **Containment Inspection**

Basin Operations/SOPS/Daily Inspection

YEAR 2020 MONTH 7 WEEK BEGINNING 7-12-20

Site	Sun 12	Mon 13	Tues 14	Wed 15	Thu 16	Fri 17	Sat 18
------	--------	--------	---------	--------	--------	--------	--------

Weather

Temperature, °F			73°				
Skies (clear, pt cldy, cloudy)			C/cA/				
Precipitaion (last 24 hr), Inches			0				
Wind Speed (mph)			1.2				
Wind Direction			S				

Containment Surface

Migratory Birds Present (Y/N)			N				
(if yes, what action taken?)							
Bird Deterrent Operational (Y/N)			N				
(if no, what is done)							
Oil on Surface (Y/N)			N				
(if yes, was it removed?)							
(if not removed, why/when)							

Containment Inspection

Depth of Containment Water, ft			2.8				
3 ft Freeboard Maintained (Y/N)							
(if no, what is done)							
Strutural Defect (Y,N) *							
(if yes, what and actions?)							
Leak Detected (Y/N)			N				
(if yes, what and actions?)							
Oil On/Off Water Present (Y/N)			N				
Comments							

Verification

Initials and Time			OC 10 AM				
-------------------	--	--	-------------	--	--	--	--

BASIN WATER RECYCLING Containment Inspection

YEAR 2020 MONTH 7 WEEK BEGINNING 7-5-20

Date	Sun <u>5</u>	Mon <u>6</u>	Tues <u>7</u>	Wed <u>8</u>	Thu <u>9</u>	Fri <u>10</u>	Sat <u>11</u>
------	--------------	--------------	---------------	--------------	--------------	---------------	---------------

Weather

Temperature, °F		<u>91</u>					
Skies (clear, pt cldy, cloudy)		<u>clear</u>					
Precipitation (last 24 hr), Inches		<u>0.0</u>					
Wind Speed (mph)		<u>71</u>					
Wind Direction		<u>SE</u>					

Containment Surface

Migratory Birds Present (Y/N)		<u>N</u>					
(if yes, what action taken?)							
Bird Deterrent Operational (Y/N)		<u>N</u>					
(if no, what is done)							
Oil on Surface (Y/N)		<u>N</u>					
(if yes, was it removed?)							
(if not removed, why/when)							

Containment Inspection

Depth of Containment Water, ft		<u>3.0</u>					
3 ft Freeboard Maintained (Y/N)							
(if no, what is done)							
Structural Defect (Y/N) *							
(if yes, what and actions?)							
Leak Detected (Y/N)		<u>N</u>					
(if yes, what and actions?)							
Man On/Off Water Present (Y/N)		<u>N</u>					
Comments							
Verification	<u>OC</u>						
Initials and Time		<u>3:00pm</u>					

BASIN WATER RECYCLING **Containment Inspection**

YEAR 2020 MONTH 7 WEEK BEGINNING _____

te	Sun <u>26</u>	Mon <u>27</u>	Tues <u>28</u>	Wed <u>29</u>	Thu <u>30</u>	Fri <u>3</u>	Sat <u>1</u>
----	---------------	---------------	----------------	---------------	---------------	--------------	--------------

Weather

Temperature, °F				<u>93°</u>			
Skies (clear, pt cldy, cloudy)				<u>Clear</u>			
Precipitation (last 24 hr), Inches				<u>0</u>			
Wind Speed (mph)				<u>4</u>			
Wind Direction				<u>SE</u>			

Containment Surface

Migratory Birds Present (Y/N)				<u>N</u>			
(if yes, what action taken?)							
Bird Deterrent Operational (Y/N)				<u>N</u>			
(if no, what is done)							
Oil on Surface (Y/N)				<u>N</u>			
(if yes, was it removed?)							
(if not removed, why/when)							

Containment Inspection

Depth of Containment Water, ft				<u>2'0"</u>			
3 ft Freeboard Maintained (Y/N)							
(if no, what is done)							
Structural Defect (Y,N) *							
(if yes, what and actions?)							
Leak Detected (Y/N)				<u>N</u>			
(if yes, what and actions?)							
Run On/Off Water Present (Y/N)				<u>N</u>			
Comments							
Verification							
Initials and Time				<u>OC</u> <u>4/12</u>			

BASIN WATER RECYCLING **Containment Inspection**

Basin Operations/SOPS/Daily Inspection

YEAR 2020 MONTH 6 WEEK BEGINNING 6/30/20

te	Sun <u>28</u>	Mon <u>29</u>	Tues <u>30</u>	Wed <u>1</u>	Thu <u>2</u>	Fri <u>3</u>	Sat <u>4</u>
----	---------------	---------------	----------------	--------------	--------------	--------------	--------------

Weather

Temperature, °F			<u>74</u>				
Skies (clear, pt cldy, cloudy)			<u>clear</u>				
Precipitaion (last 24 hr), Inches			<u>0</u>				
Wind Speed (mph)			<u>6-9</u>				
Wind Direction			<u>SE</u>				

Containment Surface

Migratory Birds Present (Y/N)			<u>N</u>				
(if yes, what action taken?)							
Bird Deterrant Operational (Y/N)			<u>N</u>				
(if no, what is done)							
Oil on Surface (Y/N)			<u>N</u>				
(if yes, was it removed?)							
(if not removed, why/when)							

Containment Inspection

Depth of Containment Water, ft				<u>3.9"</u>			
3 ft Freeboard Maintained (Y/N)							
(if no, what is done)							
Strutural Defect (Y,N) *				<u>N</u>			
(if yes, what and actions?)							
Leak Detected (Y/N)				<u>N</u>			
(if yes, what and actions?)							
Run On/Off Water Present (Y/N)				<u>N</u>			
Comments							
Verification							
Intials and Time				<u>3:00pm</u>			

BASIN WATER RECYCLING Containment Inspection

Basin Operations/SOPS/Daily Inspection

YEAR 2020 MONTH 6 WEEK BEGINNING 6-21-20

te	Sun 21	Mon 22	Tues 23	Wed 24	Thu 25	Fri 26	Sat 27
----	--------	--------	---------	--------	--------	--------	--------

Weather

Temperature, °F					84		
Skies (clear, pt cldy, cloudy)					pt cloudy		
Precipitation (last 24 hr), Inches					0		
Wind Speed (mph)					2.0		
Wind Direction					SE		

Containment Surface

Migratory Birds Present (Y/N)					N		
(if yes, what action taken?)							
Bird Deterrent Operational (Y/N)					✓		
(if no, what is done)							
Oil on Surface (Y/N)					N		
(if yes, was it removed?)							
(if not removed, why/when)							

Containment Inspection

Depth of Containment Water, ft					2' 10"		
3 ft Freeboard Maintained (Y/N)					✓		
(if no, what is done)							
Strutural Defect (Y,N) *					N		
(if yes, what and actions?)							
Leak Detected (Y/N)					N		
(if yes, what and actions?)							
Run On/Off Water Present (Y/N)					N		
Comments							
Verification							
Intials and Time					11:00 AM		

YEAR 2020 MONTH 6 WEEK BEGINNING 6-14-20

Date	Sun 14	Mon 15	Tues 16	Wed 17	Thu 18	Fri 19	Sat 20
Weather							
Temperature, °F		75°					
Skies (clear, pt cldy, cloudy)		clear					
Precipitation (last 24 hr), Inches		0					
Wind Speed (mph)		0.1					
Wind Direction		S					
Containment Surface							
Migratory Birds Present (Y/N)		N					
(if yes, what action taken?)							
Bird Deterrent Operational (Y/N)		Y					
(if no, what is done)							
Oil on Surface (Y/N)		N					
(if yes, was it removed?)							
(if not removed, why/when)							
Containment Inspection							
Depth of Containment Water, ft		3'					
3 ft Freeboard Maintained (Y/N)		✓					
(if no, what is done)							
Structural Defect (Y,N) *		N					
(if yes, what and actions?)							
Leak Detected (Y/N)		N					
(if yes, what and actions?)							
Run On/Off Water Present (Y/N)		N					
Comments							
Verification							
Initials and Time		10:00A P6					

YEAR 2020 MONTH 6 WEEK BEGINNING

Date	Sun 7	Mon 8	Tues 9	Wed 10	Thu 11	Fri 12	Sat 13
Weather							
Temperature, °F						73°	
Skies (clear, pt cldy, cloudy)						clear	
Precipitation (last 24 hr), Inches						0	
Wind Speed (mph)						10	
Wind Direction						SE	
Containment Surface							
Migratory Birds Present (Y/N)						N	
(if yes, what action taken?)							
Bird Deterrent Operational (Y/N)						Y	
(if no, what is done)							
Oil on Surface (Y/N)						N	
(if yes, was it removed?)							
(if not removed, why/when)							
Containment Inspection							
Depth of Containment Water, ft						2' 11"	
3 ft Freeboard Maintained (Y/N)						Y	
(if no, what is done)							
Structural Defect (Y,N) *						N	
(if yes, what and actions?)							
Leak Detected (Y/N)						N	
(if yes, what and actions?)							
Run On/Off Water Present (Y/N)						N	
Comments							
Verification							
Initials and Time						10:00h P6	

District I
1625 N. French Dr., Hobbs, NM 88240
District II
811 S. First St., Artesia, NM 88210
District III
1000 Rio Brazos Road, Aztec, NM 87410
District IV
1220 S. St. Francis Dr., Santa Fe, NM 87505

State of New Mexico
Energy Minerals and Natural Resources
Department
Oil Conservation Division
1220 South St. Francis Dr.
Santa Fe, NM 87505

Form C-147
Revised April 3, 2017

Recycling Facility and/or Recycling Containment

Type of Facility: ☒ Recycling Facility ☒ Recycling Containment*

Type of action: ☐ Permit ☐ Registration
☐ Modification ☒ Extension
☐ Closure ☐ Other (explain) _____

* At the time C-147 is submitted to the division for a Recycling Containment, a copy shall be provided to the surface owner.

Be advised that approval of this request does not relieve the operator of liability should operations result in pollution of surface water, ground water or the environment. Nor does approval relieve the operator of its responsibility to comply with any other applicable governmental authority's rules, regulations or ordinances.

1.
Operator: BASIN DISPOSAL INC (For multiple operators attach page with information) OGRID #: _____
Address: PO BOX 100, AZTEC, NM 87410
Facility or well name (include API# if associated with a well): BASIN WATER RECYCLING
OCD Permit Number: 3RF-2 (For new facilities the permit number will be assigned by the district office)
U/L or Qtr/Qtr SE 1/4 NE 1/4 & N 1/2 SE 1/4 Section 13 Township 23N Range 7W County: RIO ARRIBA
Surface Owner: ☒ Federal ☐ State ☐ Private ☐ Tribal Trust or Indian Allotment

2.
☒ **Recycling Facility:**
Location of recycling facility (if applicable): Latitude 36.225553° N Longitude 107.520556° W NAD83
Proposed Use: ☒ Drilling* ☒ Completion* ☒ Production* ☐ Plugging*
**The re-use of produced water may NOT be used until fresh water zones are cased and cemented*
☐ Other, *requires permit for other uses. Describe use, process, testing, volume of produced water and ensure there will be no adverse impact on groundwater or surface water.*
☒ Fluid Storage
☒ Above ground tanks ☐ Recycling containment ☐ Activity permitted under 19.15.17 NMAC explain type _____
☐ Activity permitted under 19.15.36 NMAC explain type: _____ ☐ Other explain _____
☐ For multiple or additional recycling containments, attach design and location information of each containment
☐ **Closure Report (required within 60 days of closure completion):** ☐ Recycling Facility Closure Completion Date: _____

3.
☒ **Recycling Containment:**
☐ Annual Extension after initial 5 years (attach summary of monthly leak detection inspections for previous year)
Center of Recycling Containment (if applicable): Latitude 36.225553° N Longitude 107.520556° W NAD: ☐ 1927 ☒ 1983
☐ For multiple or additional recycling containments, attach design and location information of each containment
☒ Lined ☒ Liner type: Thickness 45 mil ☒ LLDPE ☐ HDPE ☐ PVC ☐ Other _____
☒ String-Reinforced
Liner Seams: ☒ Welded ☒ Factory ☐ Other 11' x 133' Volume: 25000 bbl Dimensions: L _____ x W _____ x D _____
☐ Recycling Containment Closure Completion Date: _____

4.

Bonding:

- ☐ Covered under bonding pursuant to 19.15.8 NMAC per 19.15.34.15(A)(2) NMAC (These containments are limited to only the wells owned or operated by the owners of the containment.)
- ☒ Bonding in accordance with 19.15.34.15(A)(1). Amount of bond \$ 39,715.00 (work on these facilities cannot commence until bonding amounts are approved)
- ☒ Attach closure cost estimate and documentation on how the closure cost was calculated.

5.

Fencing:

- ☐ Four foot height, four strands of barbed wire evenly spaced between one and four feet
- ☐ Alternate. Please specify _____

6.

Signs:

- ☐ 12"x 24", 2" lettering, providing Operator's name, site location, and emergency telephone numbers
- ☐ Signed in compliance with 19.15.16.8 NMAC

7.

Variances:

Justifications and/or demonstrations that the proposed variance will afford reasonable protection against contamination of fresh water, human health, and the environment.

Check the below box only if a variance is requested:

- ☐ Variance(s): Requests must be submitted to the appropriate division district for consideration of approval. If a Variance is requested, include the variance information on a separate page and attach it to the C-147 as part of the application.

If a Variance is requested, it must be approved prior to implementation.

8.

Siting Criteria for Recycling Containment

Instructions: The applicant must provide attachments that demonstrate compliance for each siting criteria below as part of the application. Potential examples of the siting attachment source material are provided below under each criteria.

General siting**Ground water is less than 50 feet below the bottom of the Recycling Containment.**

NM Office of the State Engineer - iWATERS database search; USGS; Data obtained from nearby wells

☐ Yes ☒ No
☐ NA

Within incorporated municipal boundaries or within a defined municipal fresh water well field covered under a municipal ordinance adopted pursuant to NMSA 1978, Section 3-27-3, as amended.

☐ Yes ☐ No
☒ NA

- Written confirmation or verification from the municipality; written approval obtained from the municipality

Within the area overlying a subsurface mine.

☐ Yes ☒ No

- Written confirmation or verification or map from the NM EMNRD-Mining and Minerals Division

Within an unstable area.

☐ Yes ☒ No

- Engineering measures incorporated into the design; NM Bureau of Geology & Mineral Resources; USGS; NM Geological Society; topographic map

Within a 100-year floodplain. FEMA map

☐ Yes ☒ No

Within 300 feet of a continuously flowing watercourse, or 200 feet of any other significant watercourse, or lakebed, sinkhole, or playa lake (measured from the ordinary high-water mark).

☐ Yes ☒ No

- Topographic map; visual inspection (certification) of the proposed site

Within 1000 feet from a permanent residence, school, hospital, institution, or church in existence at the time of initial application.

☐ Yes ☒ No

- Visual inspection (certification) of the proposed site; aerial photo; satellite image

Within 500 horizontal feet of a spring or a fresh water well used for domestic or stock watering purposes, in existence at the time of initial application.

☐ Yes ☒ No

- NM Office of the State Engineer - iWATERS database search; visual inspection (certification) of the proposed site

Within 500 feet of a wetland.

☐ Yes ☒ No

- US Fish and Wildlife Wetland Identification map; topographic map; visual inspection (certification) of the proposed site

9.

Recycling Facility and/or Containment Checklist:**Instructions:** Each of the following items must be attached to the application. Indicate, by a check mark in the box, that the documents are attached.

- ☒ Design Plan - based upon the appropriate requirements.
- ☒ Operating and Maintenance Plan - based upon the appropriate requirements.
- ☒ Closure Plan - based upon the appropriate requirements.
- ☒ Site Specific Groundwater Data -
- ☒ Siting Criteria Compliance Demonstrations -
- ☒ Certify that notice of the C-147 (only) has been sent to the surface owner(s)

10.

Operator Application Certification:

I hereby certify that the information and attachments submitted with this application are true, accurate and complete to the best of my knowledge and belief.

Name (Print): JOHN VOLKERDING, PhDTitle: GENERAL MANAGERSignature: Date: 06/09/2021e-mail address: JVOLKERDING@BASINDISPOSALINC.COMTelephone: 505-334-3013

11.

OCD Representative Signature: Victoria VenegasApproval Date: 02/01/2022Title: Environmental Specialist

OCD Permit Number: _____

☒ OCD Conditions _____☐ Additional OCD Conditions on Attachment _____

Venegas, Victoria, EMNRD

From: Venegas, Victoria, EMNRD
Sent: Tuesday, February 1, 2022 3:36 PM
To: Michael Montano
Subject: 3RF-2 - BASIN WATER RECYCLING FACILITY ID fCS1519747831
Attachments: Revised C-148 Form January 2022.pdf; C-147 3RF-2 Annual Extension 2021.pdf

3RF-2 - BASIN WATER RECYCLING FACILITY ID fCS1519747831.

Mr. Montano,

NMOCD has reviewed the determination of registration/permit annual extension request for 3RF-2 - BASIN WATER RECYCLING FACILITY ID fCS1519747831 received from BASIN DISPOSAL INC [1739] on January 31, 2022. The registration/permit extension request is approved with the following conditions of approval.

- The 3RF-2 - BASIN WATER RECYCLING FACILITY ID fCS1519747831 is approved for one (1) year of operation from the date of the previous registration/permit expiration date of June 11, 2021. The new registration/permit expiration date is June 11, 2022.
- BASIN DISPOSAL INC [1739] will continue to operate, maintain, and close the 3RF-2 - BASIN WATER RECYCLING FACILITY ID fCS1519747831 in compliance with 19.15.34 NMAC, to include but not limited to the performance of weekly inspections regardless of fluid levels in the containment; recording of detailed inspection reports; removal of debris, foreign objects and oil from the containment; and monthly reporting of recycling and reuse of produced water, drilling fluids, and liquid oil field waste via from C-148.
- **Please note that NMOCD has updated Form C-148. The new Form C-148 is attached and can be also found at:**
<https://www.emnrd.nm.gov/ocd/wp-content/uploads/sites/6/Revised-C-148-Form-January-2022.pdf>
- BASIN DISPOSAL INC [1739] will maintain a liquid level in the containment that is at least equal to the weight of the liner plus 20%. BASIN DISPOSAL INC [1739] may maintain a higher liquid level if they choose.
- If less than 20% of the total fluid capacity is utilized every consecutive six months, operation of the facility is considered ceased and notification of cessation of operations should be sent electronically to [OCD Online](#). An extension to extend the cessation of operations, not to exceed six months, may be submitted using a C-147 form to [OCD Online](#).
- A minimum of 3-feet freeboard must be maintained in the recycling containment at all times.
- BASIN DISPOSAL INC [1739] will comply with 19.15.29 NMAC Releases in the event of any release of produced water or produced water or other oil field wastes at 3RF-2 - BASIN WATER RECYCLING FACILITY ID fCS1519747831 will comply with all other OCD rules.
- BASIN DISPOSAL INC [1739] must perform weekly inspections of the containment and leak detection system.
- If BASIN DISPOSAL INC [1739] wishes to extend the registration/permit past the June 11, 2022, a registration/permit extension request must be submitted to OCD. Extension requests are reviewed on a case-by-case basis and evaluated on their merit. Extensions are considered for a maximum length of one year. Additional requests must be submitted to [OCD Online](#) on a Form C-147 (long form) as an Extension request and should include a formal extension request letter, a summary of the prior registration/permit period inspection reports, and the copies of the detailed inspection records for the prior permit period. The extension request should be submitted no later than May 11, 2022.

Please keep a copy of this electronic communication for your files, as no paper copy of the approval will be delivered. The signed C-147 will be saved in 3RF-2 - BASIN WATER RECYCLING FACILITY ID fCS1519747831 electronic file on the OCD website.

- Please note that NMOCD has updated Form C-148. The new Form C-148 is attached and can be also found at:
<https://www.emnrd.nm.gov/oed/wp-content/uploads/sites/6/Revised-C-148-Form-January-2022.pdf>

Regards,

Victoria Venegas • Environmental Specialist
Environmental Bureau
EMNRD - Oil Conservation Division
811S. First St. | Artesia, NM 88210
(575) 909-0269 | Victoria.Venegas@state.nm.us
<http://www.emnrd.state.nm.us/OCD/>



District I

1625 N. French Dr., Hobbs, NM 88240
 Phone:(575) 393-6161 Fax:(575) 393-0720

District II

811 S. First St., Artesia, NM 88210
 Phone:(575) 748-1283 Fax:(575) 748-9720

District III

1000 Rio Brazos Rd., Aztec, NM 87410
 Phone:(505) 334-6178 Fax:(505) 334-6170

District IV

1220 S. St Francis Dr., Santa Fe, NM 87505
 Phone:(505) 476-3470 Fax:(505) 476-3462

State of New Mexico
Energy, Minerals and Natural Resources
Oil Conservation Division
1220 S. St Francis Dr.
Santa Fe, NM 87505

CONDITIONS

Action 76882

CONDITIONS

Operator: BASIN DISPOSAL INC P.O. Box 100 Aztec, NM 87410	OGRID: 1739
	Action Number: 76882
	Action Type: [C-147] Water Recycle Long (C-147L)

CONDITIONS

Created By	Condition	Condition Date
vvenegas	NMOCD has reviewed the determination of registration/permit annual extension request for 3RF-2 - BASIN WATER RECYCLING FACILITY ID fCS1519747831 received from BASIN DISPOSAL INC [1739] on January 31, 2022. The registration/permit extension request is approved with conditions of approval. • The 3RF-2 - BASIN WATER RECYCLING FACILITY ID fCS1519747831 is approved for one (1) year of operation from the date of the previous registration/permit expiration date of June 11, 2021. The new registration/permit expiration date is June 11, 2022. • If BASIN DISPOSAL INC [1739] wishes to extend the registration/permit past the June 11, 2022, a registration/permit extension request must be submitted to OCD. The extension request should be submitted no later than May 11, 2022.	2/1/2022