

District I  
1625 N. French Dr., Hobbs, NM 88240  
District II  
811 S. First St., Artesia, NM 88210  
District III  
1000 Rio Brazos Road, Aztec, NM 87410  
District IV  
1220 S. St. Francis Dr., Santa Fe, NM 87505

State of New Mexico  
Energy Minerals and Natural Resources  
Department  
Oil Conservation Division  
1220 South St. Francis Dr.  
Santa Fe, NM 87505

Form C-144  
Revised April 3, 2017

**For temporary pits, below-grade tanks, and multi-well fluid management pits**, submit to the appropriate NMOC District Office.  
**For permanent pits** submit to the Santa Fe Environmental Bureau office and provide a copy to the appropriate NMOC District Office.

Pit, Below-Grade Tank, or  
Proposed Alternative Method Permit or Closure Plan Application

Type of action: ☒ Below grade tank registration  
☐ Permit of a pit or proposed alternative method  
BGT1 ☐ Closure of a pit, below-grade tank, or proposed alternative method  
☐ Modification to an existing permit/or registration  
☐ Closure plan only submitted for an existing permitted or non-permitted pit, below-grade tank, or proposed alternative method

**Instructions: Please submit one application (Form C-144) per individual pit, below-grade tank or alternative request**

Please be advised that approval of this request does not relieve the operator of liability should operations result in pollution of surface water, ground water or the environment. Nor does approval relieve the operator of its responsibility to comply with any other applicable governmental authority's rules, regulations or ordinances.

1.  
Operator: Harvest Four Corners OGRID # 837388

Address: 1755 Arroyo Dr., Bloomfield, NM 874133

Facility or well name: Hillstrom #1 Drip

API Number: -- OCD Permit Number: -- **Facility ID: fJMB2220060217**

U/L or Qtr/Qtr SE/NE (H) Section 2 Township 31N Range 12W County : San Juan

Center of Proposed Design: Latitude 36.92949 N Longitude 108.05755 W NAD

Surface Owner ☐ Federal ☐ State ☒ Private ☐ Tribal

2.  
☐ **Pit:** Subsection F, G or J of 19.15.17.11 NMAC

Temporary: ☐ Drilling ☐ Workover

☐ Permanent ☐ Emergency ☐ Cavitation ☐ P&A ☐ Multi-Well Fluid Management Low Chloride Drilling Fluid ☐ yes ☐ no

☐ Lined ☐ Unlined Liner type: Thickness \_\_\_\_\_ mil ☐ LLDPE ☐ HDPE ☐ PVC ☐ Other \_\_\_\_\_

☐ String-Reinforced

Liner Seams: ☐ Welded ☐ Factory ☐ Other \_\_\_\_\_ Volume: \_\_\_\_\_ bbl Dimensions: L \_\_\_\_\_ x W \_\_\_\_\_ x D \_\_\_\_\_

3.  
☒ **Below-grade tank:** Subsection I of 19.15.17.11 NMAC Volume: 11.9 bbl Type of fluid: Condensate/Produced Water

Tank Construction material: metal

☐ Secondary containment with leak detection ☐ Visible sidewalls, liner, 6-inch lift and automatic overflow shut-off

☐ Visible sidewalls and liner ☒ Visible sidewalls only ☐ Other \_\_\_\_\_

Liner type: Thickness \_\_\_\_\_ mil ☐ HDPE ☐ PVC ☒ Other Single-Walled and Single-Bottomed

4.  
☐ **Alternative Method:**

Submittal of an exception request is required. Exceptions must be submitted to the Santa Fe Environmental Bureau office for consideration of approval.

5.  
**Fencing:** Subsection D of 19.15.17.11 NMAC (*Applies to permanent pits, temporary pits, and below-grade tanks*)

☐ Chain link, six feet in height, two strands of barbed wire at top (*Required if located within 1000 feet of a permanent residence, school, hospital, institution or church*)

☐ Four foot height, four strands of barbed wire evenly spaced between one and four feet

☒ Alternate. Please specify 4' fence: 3' of hog wire + 2 strands of barbed wire at top

6.

**Netting:** Subsection E of 19.15.17.11 NMAC (*Applies to permanent pits and permanent open top tanks*)☒ Screen ☐ Netting ☐ Other \_\_\_\_\_☐ Monthly inspections (If netting or screening is not physically feasible)

7.

**Signs:** Subsection C of 19.15.17.11 NMAC☒ 12"x 24", 2" lettering, providing Operator's name, site location, and emergency telephone numbers☐ Signed in compliance with 19.15.16.8 NMAC

8.

**Variances and Exceptions:**

Justifications and/or demonstrations of equivalency are required. Please refer to 19.15.17 NMAC for guidance.

***Please check a box if one or more of the following is requested, if not leave blank:***☐ Variance(s): Requests must be submitted to the appropriate division district for consideration of approval.☐ Exception(s): Requests must be submitted to the Santa Fe Environmental Bureau office for consideration of approval.

9.

**Siting Criteria (regarding permitting):** 19.15.17.10 NMAC***Instructions: The applicant must demonstrate compliance for each siting criteria below in the application. Recommendations of acceptable source material are provided below. Siting criteria does not apply to drying pads or above-grade tanks.*****General siting****Ground water is less than 25 feet below the bottom of a low chloride temporary pit or below-grade tank.**- ☒ NM Office of the State Engineer - iWATERS database search; ☐ USGS; ☐ Data obtained from nearby wells☐ Yes ☒ No☐ NA**Ground water is less than 50 feet below the bottom of a Temporary pit, permanent pit, or Multi-Well Fluid Management pit .**

NM Office of the State Engineer - iWATERS database search; USGS; Data obtained from nearby wells

☐ Yes ☐ No☒ NAWithin incorporated municipal boundaries or within a defined municipal fresh water well field covered under a municipal ordinance adopted pursuant to NMSA 1978, Section 3-27-3, as amended. **(Does not apply to below grade tanks)**

- Written confirmation or verification from the municipality; Written approval obtained from the municipality

☐ Yes ☐ NoWithin the area overlying a subsurface mine. **(Does not apply to below grade tanks)**

- Written confirmation or verification or map from the NM EMNRD-Mining and Mineral Division

☐ Yes ☐ NoWithin an unstable area. **(Does not apply to below grade tanks)**

- Engineering measures incorporated into the design; NM Bureau of Geology &amp; Mineral Resources; USGS; NM Geological Society; Topographic map

☐ Yes ☐ NoWithin a 100-year floodplain. **(Does not apply to below grade tanks)**

- FEMA map

☐ Yes ☐ No**Below Grade Tanks**

Within 100 feet of a continuously flowing watercourse, significant watercourse, lake bed, sinkhole, wetland or playa lake (measured from the ordinary high-water mark).

- Topographic map; Visual inspection (certification) of the proposed site

☐ Yes ☒ No

Within 200 horizontal feet of a spring or a fresh water well used for public or livestock consumption;.

- NM Office of the State Engineer - iWATERS database search; Visual inspection (certification) of the proposed site

☐ Yes ☒ No**Temporary Pit using Low Chloride Drilling Fluid** (maximum chloride content 15,000 mg/liter)

Within 100 feet of a continuously flowing watercourse, or any other significant watercourse or within 200 feet of any lakebed, sinkhole, or playa lake (measured from the ordinary high-water mark). (Applies to low chloride temporary pits.)

- Topographic map; Visual inspection (certification) of the proposed site

☐ Yes ☐ No

Within 300 feet from a occupied permanent residence, school, hospital, institution, or church in existence at the time of initial application.

- Visual inspection (certification) of the proposed site; Aerial photo; Satellite image

☐ Yes ☐ No

Within 200 horizontal feet of a spring or a private, domestic fresh water well used by less than five households for domestic or stock watering purposes, or 300feet of any other fresh water well or spring, in existence at the time of the initial application.

NM Office of the State Engineer - iWATERS database search; Visual inspection (certification) of the proposed site

☐ Yes ☐ No

Within 100 feet of a wetland.

- US Fish and Wildlife Wetland Identification map; Topographic map; Visual inspection (certification) of the proposed site

☐ Yes ☐ No

### **Temporary Pit Non-low chloride drilling fluid**

Within 300 feet of a continuously flowing watercourse, or any other significant watercourse, or within 200 feet of any lakebed, sinkhole, or playa lake (measured from the ordinary high-water mark).

- Topographic map; Visual inspection (certification) of the proposed site

☐ Yes ☐ No

Within 300 feet from a permanent residence, school, hospital, institution, or church in existence at the time of initial application.

- Visual inspection (certification) of the proposed site; Aerial photo; Satellite image

☐ Yes ☐ No

Within 500 horizontal feet of a spring or a private, domestic fresh water well used by less than five households for domestic or stock watering purposes, or 1000 feet of any other fresh water well or spring, in the existence at the time of the initial application;

- NM Office of the State Engineer - iWATERS database search; Visual inspection (certification) of the proposed site

☐ Yes ☐ No

Within 300 feet of a wetland.

- US Fish and Wildlife Wetland Identification map; Topographic map; Visual inspection (certification) of the proposed site

☐ Yes ☐ No

### **Permanent Pit or Multi-Well Fluid Management Pit**

Within 300 feet of a continuously flowing watercourse, or 200 feet of any other significant watercourse, or lakebed, sinkhole, or playa lake (measured from the ordinary high-water mark).

- Topographic map; Visual inspection (certification) of the proposed site

☐ Yes ☐ No

Within 1000 feet from a permanent residence, school, hospital, institution, or church in existence at the time of initial application.

- Visual inspection (certification) of the proposed site; Aerial photo; Satellite image

☐ Yes ☐ No

Within 500 horizontal feet of a spring or a fresh water well used for domestic or stock watering purposes, in existence at the time of initial application.

- NM Office of the State Engineer - iWATERS database search; Visual inspection (certification) of the proposed site

☐ Yes ☐ No

Within 500 feet of a wetland.

- US Fish and Wildlife Wetland Identification map; Topographic map; Visual inspection (certification) of the proposed site

☐ Yes ☐ No

10.

#### **Temporary Pits, Emergency Pits, and Below-grade Tanks Permit Application Attachment Checklist:** Subsection B of 19.15.17.9 NMAC

**Instructions:** Each of the following items must be attached to the application. Please indicate, by a check mark in the box, that the documents are attached.

- ☒ Hydrogeologic Report (Below-grade Tanks) - based upon the requirements of Paragraph (4) of Subsection B of 19.15.17.9 NMAC
- ☐ Hydrogeologic Data (Temporary and Emergency Pits) - based upon the requirements of Paragraph (2) of Subsection B of 19.15.17.9 NMAC
- ☒ Siting Criteria Compliance Demonstrations - based upon the appropriate requirements of 19.15.17.10 NMAC
- ☒ Design Plan - based upon the appropriate requirements of 19.15.17.11 NMAC
- ☒ Operating and Maintenance Plan - based upon the appropriate requirements of 19.15.17.12 NMAC
- ☒ Closure Plan (Please complete Boxes 14 through 18, if applicable) - based upon the appropriate requirements of Subsection C of 19.15.17.9 NMAC and 19.15.17.13 NMAC

☐ Previously Approved Design (attach copy of design) API Number: \_\_\_\_\_ or Permit Number: \_\_\_\_\_

11.

#### **Multi-Well Fluid Management Pit Checklist:** Subsection B of 19.15.17.9 NMAC

**Instructions:** Each of the following items must be attached to the application. Please indicate, by a check mark in the box, that the documents are attached.

- ☐ Design Plan - based upon the appropriate requirements of 19.15.17.11 NMAC
- ☐ Operating and Maintenance Plan - based upon the appropriate requirements of 19.15.17.12 NMAC
- ☐ A List of wells with approved application for permit to drill associated with the pit.
- ☐ Closure Plan (Please complete Boxes 14 through 18, if applicable) - based upon the appropriate requirements of Subsection C of 19.15.17.9 NMAC and 19.15.17.13 NMAC
- ☐ Hydrogeologic Data - based upon the requirements of Paragraph (4) of Subsection B of 19.15.17.9 NMAC
- ☐ Siting Criteria Compliance Demonstrations - based upon the appropriate requirements of 19.15.17.10 NMAC

☐ Previously Approved Design (attach copy of design) API Number: \_\_\_\_\_ or Permit Number: \_\_\_\_\_

12.

**Permanent Pits Permit Application Checklist:** Subsection B of 19.15.17.9 NMAC

**Instructions:** Each of the following items must be attached to the application. Please indicate, by a check mark in the box, that the documents are attached.

- ☐ Hydrogeologic Report - based upon the requirements of Paragraph (1) of Subsection B of 19.15.17.9 NMAC  
☐ Siting Criteria Compliance Demonstrations - based upon the appropriate requirements of 19.15.17.10 NMAC  
☐ Climatological Factors Assessment  
☐ Certified Engineering Design Plans - based upon the appropriate requirements of 19.15.17.11 NMAC  
☐ Dike Protection and Structural Integrity Design - based upon the appropriate requirements of 19.15.17.11 NMAC  
☐ Leak Detection Design - based upon the appropriate requirements of 19.15.17.11 NMAC  
☐ Liner Specifications and Compatibility Assessment - based upon the appropriate requirements of 19.15.17.11 NMAC  
☐ Quality Control/Quality Assurance Construction and Installation Plan  
☐ Operating and Maintenance Plan - based upon the appropriate requirements of 19.15.17.12 NMAC  
☐ Freeboard and Overtopping Prevention Plan - based upon the appropriate requirements of 19.15.17.11 NMAC  
☐ Nuisance or Hazardous Odors, including H<sub>2</sub>S, Prevention Plan  
☐ Emergency Response Plan  
☐ Oil Field Waste Stream Characterization  
☐ Monitoring and Inspection Plan  
☐ Erosion Control Plan  
☐ Closure Plan - based upon the appropriate requirements of Subsection C of 19.15.17.9 NMAC and 19.15.17.13 NMAC

13.

**Proposed Closure:** 19.15.17.13 NMAC

**Instructions:** Please complete the applicable boxes, Boxes 14 through 18, in regards to the proposed closure plan.

- Type: ☐ Drilling ☐ Workover ☐ Emergency ☐ Cavitation ☐ P&A ☐ Permanent Pit ☒ Below-grade Tank ☐ Multi-well Fluid Management Pit  
☐ Alternative
- Proposed Closure Method: ☒ Waste Excavation and Removal  
☐ Waste Removal (Closed-loop systems only)  
☐ On-site Closure Method (Only for temporary pits and closed-loop systems)  
☐ In-place Burial ☐ On-site Trench Burial  
☐ Alternative Closure Method

14.

**Waste Excavation and Removal Closure Plan Checklist:** (19.15.17.13 NMAC) **Instructions:** Each of the following items must be attached to the closure plan. Please indicate, by a check mark in the box, that the documents are attached.

- ☒ Protocols and Procedures - based upon the appropriate requirements of 19.15.17.13 NMAC  
☒ Confirmation Sampling Plan (if applicable) - based upon the appropriate requirements of Subsection C of 19.15.17.13 NMAC  
☒ Disposal Facility Name and Permit Number (for liquids, drilling fluids and drill cuttings)  
☒ Soil Backfill and Cover Design Specifications - based upon the appropriate requirements of Subsection H of 19.15.17.13 NMAC  
☒ Re-vegetation Plan - based upon the appropriate requirements of Subsection H of 19.15.17.13 NMAC  
☒ Site Reclamation Plan - based upon the appropriate requirements of Subsection H of 19.15.17.13 NMAC

15.

**Siting Criteria (regarding on-site closure methods only):** 19.15.17.10 NMAC

**Instructions:** Each siting criteria requires a demonstration of compliance in the closure plan. Recommendations of acceptable source material are provided below. Requests regarding changes to certain siting criteria require justifications and/or demonstrations of equivalency. Please refer to 19.15.17.10 NMAC for guidance.

Ground water is less than 25 feet below the bottom of the buried waste. - NM Office of the State Engineer - iWATERS database search; USGS; Data obtained from nearby wells	<input type="checkbox"/> Yes <input type="checkbox"/> No <input type="checkbox"/> NA
Ground water is between 25-50 feet below the bottom of the buried waste - NM Office of the State Engineer - iWATERS database search; USGS; Data obtained from nearby wells	<input type="checkbox"/> Yes <input type="checkbox"/> No <input type="checkbox"/> NA
Ground water is more than 100 feet below the bottom of the buried waste. - NM Office of the State Engineer - iWATERS database search; USGS; Data obtained from nearby wells	<input type="checkbox"/> Yes <input type="checkbox"/> No <input type="checkbox"/> NA
Within 100 feet of a continuously flowing watercourse, or 200 feet of any other significant watercourse, lakebed, sinkhole, or playa lake (measured from the ordinary high-water mark). - Topographic map; Visual inspection (certification) of the proposed site	<input type="checkbox"/> Yes <input type="checkbox"/> No
Within 300 feet from a permanent residence, school, hospital, institution, or church in existence at the time of initial application. - Visual inspection (certification) of the proposed site; Aerial photo; Satellite image	<input type="checkbox"/> Yes <input type="checkbox"/> No
Within 300 horizontal feet of a private, domestic fresh water well or spring used for domestic or stock watering purposes, in existence at the time of initial application. - NM Office of the State Engineer - iWATERS database; Visual inspection (certification) of the proposed site	<input type="checkbox"/> Yes <input type="checkbox"/> No
Written confirmation or verification from the municipality; Written approval obtained from the municipality	<input type="checkbox"/> Yes <input type="checkbox"/> No
Within 300 feet of a wetland. US Fish and Wildlife Wetland Identification map; Topographic map; Visual inspection (certification) of the proposed site	<input type="checkbox"/> Yes <input type="checkbox"/> No
Within incorporated municipal boundaries or within a defined municipal fresh water well field covered under a municipal ordinance	

adopted pursuant to NMSA 1978, Section 3-27-3, as amended.

- Written confirmation or verification from the municipality; Written approval obtained from the municipality

☐ Yes ☐ No

Within the area overlying a subsurface mine.

- Written confirmation or verification or map from the NM EMNRD-Mining and Mineral Division

☐ Yes ☐ No

Within an unstable area.

- Engineering measures incorporated into the design; NM Bureau of Geology & Mineral Resources; USGS; NM Geological Society; Topographic map

☐ Yes ☐ No

Within a 100-year floodplain.

- FEMA map

☐ Yes ☐ No

16. **On-Site Closure Plan Checklist:** (19.15.17.13 NMAC) *Instructions: Each of the following items must be attached to the closure plan. Please indicate, by a check mark in the box, that the documents are attached.*

- ☐ Siting Criteria Compliance Demonstrations - based upon the appropriate requirements of 19.15.17.10 NMAC
- ☐ Proof of Surface Owner Notice - based upon the appropriate requirements of Subsection E of 19.15.17.13 NMAC
- ☐ Construction/Design Plan of Burial Trench (if applicable) based upon the appropriate requirements of Subsection K of 19.15.17.11 NMAC
- ☐ Construction/Design Plan of Temporary Pit (for in-place burial of a drying pad) - based upon the appropriate requirements of 19.15.17.11 NMAC
- ☐ Protocols and Procedures - based upon the appropriate requirements of 19.15.17.13 NMAC
- ☐ Confirmation Sampling Plan (if applicable) - based upon the appropriate requirements of 19.15.17.13 NMAC
- ☐ Waste Material Sampling Plan - based upon the appropriate requirements of 19.15.17.13 NMAC
- ☐ Disposal Facility Name and Permit Number (for liquids, drilling fluids and drill cuttings or in case on-site closure standards cannot be achieved)
- ☐ Soil Cover Design - based upon the appropriate requirements of Subsection H of 19.15.17.13 NMAC
- ☐ Re-vegetation Plan - based upon the appropriate requirements of Subsection H of 19.15.17.13 NMAC
- ☐ Site Reclamation Plan - based upon the appropriate requirements of Subsection H of 19.15.17.13 NMAC

17.

**Operator Application Certification:**

I hereby certify that the information submitted with this application is true, accurate and complete to the best of my knowledge and belief.

Name (Print): Monica Smith Title: Environmental Specialist

Signature:  Date: 12/3/2020

e-mail address: msmith@harvestmidstream.com Telephone: 505-632-4625

18.

**OCD Approval:** ☒ Permit Application (including closure plan) ☐ Closure Plan (only) ☐ OCD Conditions (see attachment)

OCD Representative Signature: Jaclyn Burdine Approval Date: 07/20/2022

Title: Environmental Specialist-A OCD Permit Number: Facility ID: fJMB2220060217

19.

**Closure Report (required within 60 days of closure completion):** 19.15.17.13 NMAC

*Instructions: Operators are required to obtain an approved closure plan prior to implementing any closure activities and submitting the closure report. The closure report is required to be submitted to the division within 60 days of the completion of the closure activities. Please do not complete this section of the form until an approved closure plan has been obtained and the closure activities have been completed.*

☐ Closure Completion Date:

20.

**Closure Method:**

- ☐ Waste Excavation and Removal ☐ On-Site Closure Method ☐ Alternative Closure Method ☐ Waste Removal (Closed-loop systems only)
- ☐ If different from approved plan, please explain.

21.

**Closure Report Attachment Checklist:** *Instructions: Each of the following items must be attached to the closure report. Please indicate, by a check mark in the box, that the documents are attached.*

- ☐ Proof of Closure Notice (surface owner and division)
- ☐ Proof of Deed Notice (required for on-site closure for private land only)
- ☐ Plot Plan (for on-site closures and temporary pits)
- ☐ Confirmation Sampling Analytical Results (if applicable)
- ☐ Waste Material Sampling Analytical Results (required for on-site closure)
- ☐ Disposal Facility Name and Permit Number *Not Applicable - no soil disposal*
- ☐ Soil Backfilling and Cover Installation
- ☐ Re-vegetation Application Rates and Seeding Technique
- ☐ Site Reclamation (Photo Documentation)

On-site Closure Location: Latitude \_\_\_\_\_ Longitude \_\_\_\_\_ NAD: ☐ 1927 ☐ 1983

22.

**Operator Closure Certification:**

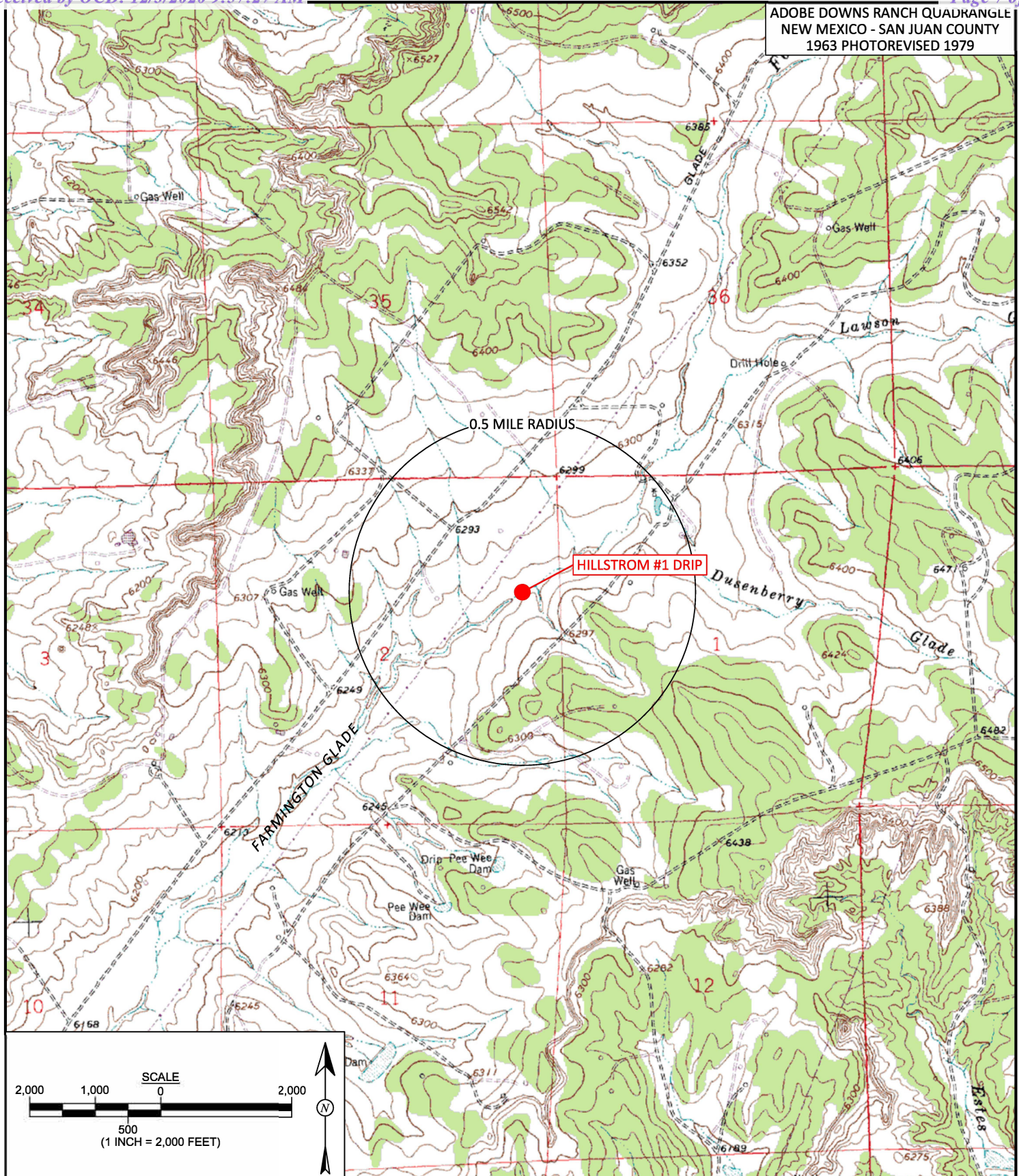
I hereby certify that the information and attachments submitted with this closure report is true, accurate and complete to the best of my knowledge and belief. I also certify that the closure complies with all applicable closure requirements and conditions specified in the approved closure plan.

Name (Print): \_\_\_\_\_ Title: \_\_\_\_\_

Signature: \_\_\_\_\_ Date: \_\_\_\_\_

email address: \_\_\_\_\_ Telephone: \_\_\_\_\_





animas  
environmental  
services

Farmington, NM • Durango, CO  
animasenvironmental.com

**DRAWN BY:**  
C. Lameman

**DATE DRAWN:**  
November 17, 2020

**REVISIONS BY:**  
C. Lameman

**DATE REVISED:**  
November 17, 2020

**CHECKED BY:**  
E. McNally

**DATE CHECKED:**  
November 17, 2020

**APPROVED BY:**  
E. McNally

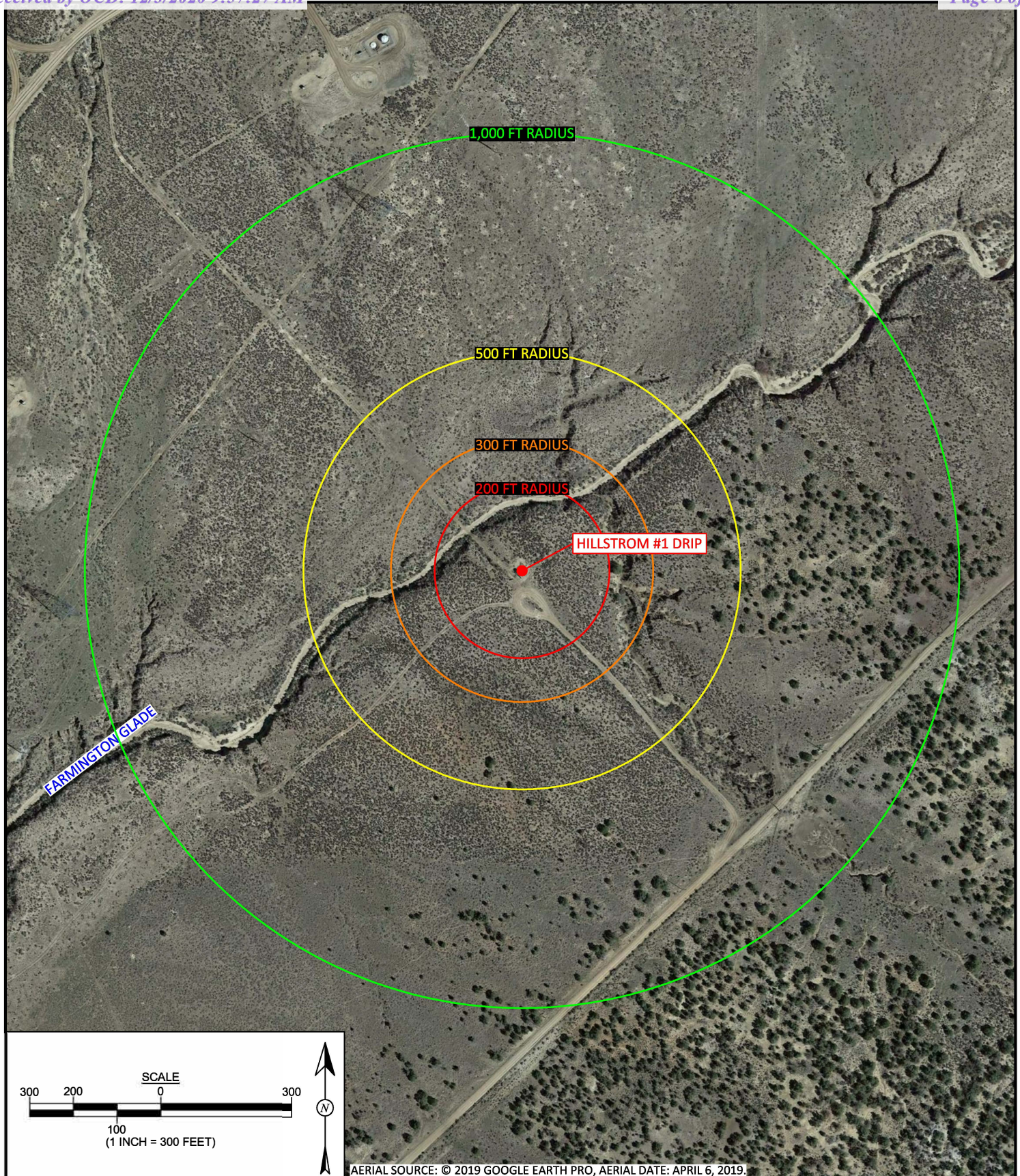
**DATE APPROVED:**  
November 17, 2020

## FIGURE 1

### TOPOGRAPHIC SITE LOCATION MAP

HARVEST FOUR CORNERS, LLC  
HILLSTROM #1 DRIP  
SE1/4 NE1/4, SECTION 2, T31N, R12W  
SAN JUAN COUNTY, NEW MEXICO  
N36.92949, W108.05755





animas  
environmental  
services

Farmington, NM • Durango, CO  
animasenvironmental.com

**DRAWN BY:**  
C. Lameman

**DATE DRAWN:**  
November 17, 2020

**REVISIONS BY:**  
C. Lameman

**DATE REVISED:**  
November 17, 2020

**CHECKED BY:**  
E. McNally

**DATE CHECKED:**  
November 17, 2020

**APPROVED BY:**  
E. McNally

**DATE APPROVED:**  
November 17, 2020

## FIGURE 2

**AERIAL SITE LOCATION MAP**  
HARVEST FOUR CORNERS, LLC  
HILLSTROM #1 DRIP  
SE1/4 NE1/4, SECTION 2, T31N, R12W  
SAN JUAN COUNTY, NEW MEXICO  
N36.92949, W108.05755




**BGT Siting Criteria - Summary Information Sheet**  
**19.15.17.10 NMAC**

Site Name:	Hillstrom 1 Drip
Pit Identifier:	BGT
API #:	none
Lat/Long:	N36.92949 W108.05755
Qtr/Qtr-Section-Township-Range:	SE/NE-2-31N-12W
Land Jurisdiction:	Private
County:	San Juan
Determination made by:	David Reese (Environmental Scientist)
Date:	11/16/2020

**Depth to Groundwater Determination**

Is groundwater less than 25 feet below the bottom of below grade tank?	Yes <input type="checkbox"/>	No <input checked="" type="checkbox"/>
Cathodic Report/Site Specific Hydrogeology	none	
Elevation Differential	approx. 20' higher than Farmington Glade	
Water Wells	50' at both SJ 03987 and SJ 03995 (both are 15' higher than site)	
Cathodic Report Nearby Wells	--	

**Distance to Waterbodies**

Is the BGT within 100 feet of a continuously flowing watercourse, significant watercourse, lake bed, sinkhole, wetland or playa lake?	Yes <input type="checkbox"/>	No <input checked="" type="checkbox"/>
Nearest continuously flowing watercourse, significant watercourse, lake bed, sinkhole, wetland or playa lake (measured from the ordinary high-water mark):	Farmington Glade is 140' to the northwest	

**Distance to Water Sources**

Is the BGT within 200 horizontal feet of a spring or fresh water well used for public or livestock consumption?	Yes <input type="checkbox"/>	No <input checked="" type="checkbox"/>
Springs or wells within 200 feet:	No wells registered within 1/2 mile.	

## Hillstrom 1 Drip

### Site Specific Hydrogeology

This particular site is located within the Adobe Downs Ranch 7.5' USGS topographic quadrangle. This location is in section 2 of Township 31 North Range 12 West of the Public Land Survey System (New Mexico Principal Meridian) in San Juan County, New Mexico. The nearest town is La Plata, located 7.2 miles to the west. The nearest large town (population greater than 10,000) is Farmington, located 13.5 miles to the southwest. The nearest highway is State Highway 574, located 2.1 miles to the southwest. The location is on Private land and is 660 feet from the edge of the parcel as notated in the ArcGIS Land Ownership – New Mexico layer. This location is in the Middle San Juan. Arizona, Colorado, New Mexico, Sub-basin. This location is located 1914 meters or 6277 feet above sea level and receives 14 inches of rain each year. The vegetation at this location is classified as Inter-Mountain Basins Big Sagebrush Shrubland as per the Southwest Regional Gap Analysis Program.

The estimated depth to ground water at this point is 25 to 50 feet. This estimation is based on the data published on the NMOSE New Mexico Water Rights Reporting System. Groundwater data available from that database for wells near the proposed site are attached. The nearest stream is 140 feet to the northwest and is classified by the USGS as an intermittent stream. The nearest perennial stream is the Animas River 6.5 miles to the southeast. The nearest water body is a stock pond 0.46 miles to the northeast. The nearest water well is 0.49 miles to the northeast. There are no wetlands designated on the US Fish & Wildlife Service National Wetlands Inventory. The slope at this location is to the northwest. This information is discerned from Google Earth and the included topographic map. The surface geology at this location is NACIMIENTO FORMATION--Shale and sandstone with a Shale dominated formations of all ages substrate. The soil at this location is 'Blancot-Notal association, gently sloping' and is well drained and not hydric with moderate erosion potential as taken from the NRCS Web Soil Survey accessed November 16, 2020.

### Regional Geological Context:

The Nacimiento Formation is of Paleocene age (Baltz, 1967, p. 35). It crops out in a broad band inside the southern and western margins of the central basin and in a narrow band along the west face of the Nacimiento Uplift. The Nacimiento is a nonresistant unit and typically erodes to low, rounded hills or forms badland topography.

The Nacimiento Formation occurs in approximately only the southern two-thirds of the San Juan Basin where it conformably overlies and intertongues with the Ojo Alamo Sandstone (Fassett, 1974, p. 229). The Nacimiento Formation grades laterally into the main part of the Animas Formation (Fassett and Hinds, 1971, p. 34); thus, in this area, the two formations occupy the same stratigraphic interval. Strata of the Nacimiento Formation were deposited in lakebeds in the central basin area with lesser deposition in stream channels (Brimhall, 1973, p. 201). In general, the Nacimiento consists of drab, interbedded black and gray shale with discontinuous, white, medium- to very coarse grained arkosic sandstone (Stone et al., 1983, p.30). Stone et al. indicated that the formation may contain more sandstone than commonly reported because some investigators assume the slope-forming strata in the unit area shales, whereas in many places the strata actually are poorly consolidated sandstones.

Total thickness of the Nacimiento Formation ranges from about 500 to 1,300 feet. The unit generally thickens from the basin margins toward the basin center (Steven et al., 1974). The sandstone deposits within the Nacimiento Formation are much thinner than the total thickness of the formation because



their environment of deposition was localized stream channels (Brimhall, 1973, p. 201). The thickness of the combined San Jose, Animas, and Nacimiento Formations ranges from 500 to more than 3,500 feet.

#### Hydraulic Properties:

Reported well yields for 53 wells completed in either the Animas or Nacimiento Formations range from 2 to 90 gallons per minute and the median yield is 7.5 gallons per minute. The primary use of water from Nacimiento and Animas Formations is domestic and livestock supplies. There are no known aquifer tests for the Animas or Nacimiento Formations, but specific capacities reported for six wells range from 0.24 to 2.30 gallons per minute per foot of drawdown (Levings et al., 1990). The Animas and Nacimiento Formations are in many ways hydrologically similar to the San Jose Formation because sands in both units produce approximately the same quantities of water. However, the greater percentage of fine materials in the Animas and Nacimiento Formations may restrict downward vertical leakage to the Ojo Alamo Sandstone or Kirtland Shale. The poorly cemented fine material is highly erodible, forms a badland terrain and supports only spotty vegetation. These conditions are more conducive to runoff than retention of precipitation.

#### References:

- Baltz, E.H., 1967, Stratigraphy and regional tectonic implications of part of Upper Cretaceous rocks, east central San Juan Basin, New Mexico: USGS Professional Paper 552, 101 p.
- Brimhall, R.M., 1973, Ground-water hydrology of Tertiary rocks of the San Juan Basin, New Mexico, in Fassett, J.E., ed., Cretaceous and Tertiary rocks of the Southern Colorado Plateau: Four Corners Geological Society Memoir, p. 197-207.
- Fassett, J.E., 1974, Cretaceous and Tertiary rocks of the eastern San Juan Basin, New Mexico and Colorado, in Guidebook of Ghost Ranch, central-northern New Mexico: New Mexico Geological Society, 25th Field Conference, p. 225-230.
- Fassett, J.E., and Hinds, J.S., 1971, Geology and fuel resources of the Fruitland Formation and Kirtland Shale of the San Juan Basin, New Mexico and Colorado: USGS Professional Paper 676, 76 p.
- Levings, G.W., Craig, S.D., Dam, W.L., Kernodle, J.M., and Thorn, C.R., 1990, Hydrogeology of the San Jose, Nacimiento, and Animas Formations in the San Juan structural basin, New Mexico, Colorado, Arizona, and Utah: USGS Hydrologic Investigations Atlas HA-720-A, 2 sheets.
- Stone, W.J., Lyford, F.P., Frenzel, P.F., Mizell, N.H., and Padgett, E.T., 1983, Hydrogeology and water resources of San Juan Basin, New Mexico: New Mexico Bureau of Mines and Mineral Resources, Hydrologic Report 6.



## New Mexico Office of the State Engineer

# Active & Inactive Points of Diversion

(with Ownership Information)

No PODs found.

**PLSS Search:**

**Section(s):** 2      **Township:** 31N      **Range:** 12W

The data is furnished by the NMOSE/ISC and is accepted by the recipient with the expressed understanding that the OSE/ISC make no warranties, expressed or implied, concerning the accuracy, completeness, reliability, usability, or suitability for any particular purpose of the data.

11/16/20 4:06 PM

ACTIVE & INACTIVE POINTS OF DIVERSION



## New Mexico Office of the State Engineer

# Active & Inactive Points of Diversion

(with Ownership Information)

(acre ft per annum)										(R=POD has been replaced and no longer serves this file, C=the file is closed)			(quarters are 1=NW 2=NE 3=SW 4=SE) (quarters are smallest to largest) (NAD83 UTM in meters)							
WR File Nbr	Sub basin	Use	Diversion	Owner	County	POD Number	Well Tag	Code	Grant	Source	q	q	q	Sec	Twa	Rng	X	Y		
<a href="#">SJ 02007</a>	SJ	DOM	3	MARVIN G. IVY	SJ	<a href="#">SJ 02007</a>					1	2	1	01	31N	12W	228321	4091876*		
<a href="#">SJ 03987</a>	SJ	STK	3	BRICE LEE	SJ	<a href="#">SJ 03987 POD1</a>				Shallow	1	2	1	01	31N	12W	228271	4091932		
<a href="#">SJ 03995</a>	SJ	STK	3	BRICE LEE	SJ	<a href="#">SJ 03995 POD1</a>				Shallow	2	1	01	31N	12W	228384	4091765			

**Record Count:** 3

**PLSS Search:**

**Q4:** NW      **Section(s):** 1      **Township:** 31N      **Range:** 12W

**Sorted by:** File Number

\*UTM location was derived from PLSS - see Help

The data is furnished by the NMOSE/ISC and is accepted by the recipient with the expressed understanding that the OSE/ISC make no warranties, expressed or implied, concerning the accuracy, completeness, reliability, usability, or suitability for any particular purpose of the data.

11/16/20 4:14 PM

ACTIVE & INACTIVE POINTS OF DIVERSION



## New Mexico Office of the State Engineer

# Active & Inactive Points of Diversion

(with Ownership Information)

(acre ft per annum)										(R=POD has been replaced and no longer serves this file, C=the file is closed)			(quarters are 1=NW 2=NE 3=SW 4=SE) (quarters are smallest to largest) (NAD83 UTM in meters)					
WR File Nbr	Sub basin	Use	Diversion	Owner	County	POD Number	Well Tag	Code	Grant	Source	q	q	q	Sec	Tw	Rng	X	Y
<a href="#">SJ 01871</a>	SJ	DOM	0	THOMAS R. & LEONA L. GLASPIE	SJ	<a href="#">SJ 01871</a>					3	3	01	31N	12W		227985	4090579*
<a href="#">SJ 03488</a>	SJ	DOM	0	IONE RANDELMAN	SJ	<a href="#">SJ 03488</a>					2	3	3	01	31N	12W	228084	4090678*

**Record Count:** 2

**DR: These 2 wells are over 1/2 miles from the location.**

**PLSS Search:**

**Q4:** SW      **Section(s):** 1      **Township:** 31N      **Range:** 12W

**Sorted by:** File Number

\*UTM location was derived from PLSS - see Help

The data is furnished by the NMOSE/ISC and is accepted by the recipient with the expressed understanding that the OSE/ISC make no warranties, expressed or implied, concerning the accuracy, completeness, reliability, usability, or suitability for any particular purpose of the data.

11/16/20 4:14 PM

ACTIVE & INACTIVE POINTS OF DIVERSION





# WELL RECORD & LOG

OFFICE OF THE STATE ENGINEER

[www.ose.state.nm.us](http://www.ose.state.nm.us)

STATE ENGINEER OFFICE  
AZTEC, NEW MEXICO


2020-8 PM 1:02

1. GENERAL AND WELL LOCATION	POD NUMBER (WELL NUMBER)				OSE FILE NUMBER(S) SJ-3987			
	WELL OWNER NAME(S) Brice Lee				PHONE (OPTIONAL) 970-588-3369			
	WELL OWNER MAILING ADDRESS 940 CR 119				CITY Hesperus		STATE CO	ZIP 81326
	WELL LOCATION (FROM GPS)	DEGREES LATITUDE 36	MINUTES 56	SECONDS .03 N	* ACCURACY REQUIRED: ONE TENTH OF A SECOND * DATUM REQUIRED: WGS 84			
DESCRIPTION RELATING WELL LOCATION TO STREET ADDRESS AND COMMON LANDMARKS								
2. OPTIONAL	(2.5 ACRE) ¼	(10 ACRE) NW ¼	(40 ACRE) NE ¼	(160 ACRE) NW ¼	SECTION 01	TOWNSHIP 31 <input checked="" type="checkbox"/> NORTH <input type="checkbox"/> SOUTH	RANGE 12 <input type="checkbox"/> EAST <input checked="" type="checkbox"/> WEST	
	SUBDIVISION NAME				LOT NUMBER	BLOCK NUMBER	UNIT/TRACT	
	HYDROGRAPHIC SURVEY				MAP NUMBER		TRACT NUMBER	
3. DRILLING INFORMATION	LICENSE NUMBER WD 1357		NAME OF LICENSED DRILLER Mark Bailey			NAME OF WELL DRILLING COMPANY Bailey Drilling Company		
	DRILLING STARTED 1-22-12		DRILLING ENDED 1-22-12		DEPTH OF COMPLETED WELL (FT) 90	BORE HOLE DEPTH (FT) 90	DEPTH WATER FIRST ENCOUNTERED (FT) 70	
	COMPLETED WELL IS: <input type="checkbox"/> ARTESIAN <input type="checkbox"/> DRY HOLE <input checked="" type="checkbox"/> SHALLOW (UNCONFINED)					STATIC WATER LEVEL IN COMPLETED WELL (FT) 50		
	DRILLING FLUID: <input checked="" type="checkbox"/> AIR <input type="checkbox"/> MUD <input type="checkbox"/> ADDITIVES - SPECIFY:							
	DRILLING METHOD: <input checked="" type="checkbox"/> ROTARY <input type="checkbox"/> HAMMER <input type="checkbox"/> CABLE TOOL <input type="checkbox"/> OTHER - SPECIFY:							
	DEPTH (FT)		BORE HOLE DIA. (IN)	CASING MATERIAL	CONNECTION TYPE (CASING)	INSIDE DIA. CASING (IN)	CASING WALL THICKNESS (IN)	SLOT SIZE (IN)
	FROM	TO						
	0	70						
	0	60						
	60		90	7 7/8	PVC	glued	5	sch 40
4. WATER BEARING STRATA	DEPTH (FT)		THICKNESS (FT)	FORMATION DESCRIPTION OF PRINCIPAL WATER-BEARING STRATA (INCLUDE WATER-BEARING CAVITIES OR FRACTURE ZONES)			YIELD (GPM)	
	FROM	TO						
	70	90	20	sand			1	
METHOD USED TO ESTIMATE YIELD OF WATER-BEARING STRATA air lift					TOTAL ESTIMATED WELL YIELD (GPM) 1			

FOR OSE INTERNAL USE

WELL RECORD & LOG (Version 6/9/08)

FILE NUMBER SJ-3987	POD NUMBER 1	TRN NUMBER
LOCATION 3N. 12W. 01. 121		PAGE 1 OF 2

5. SEAL AND PUMP	TYPE OF PUMP: <input type="checkbox"/> SUBMERSIBLE <input type="checkbox"/> JET <input checked="" type="checkbox"/> NO PUMP - WELL NOT EQUIPPED <input type="checkbox"/> TURBINE <input type="checkbox"/> CYLINDER <input type="checkbox"/> OTHER - SPECIFY:						
	ANNULAR SEAL AND GRAVEL PACK	DEPTH (FT)		BORE HOLE DIA. (IN)	MATERIAL TYPE AND SIZE	AMOUNT (CUBIC FT)	METHOD OF PLACEMENT
		FROM	TO				
		0	70	8	cement	2	hand pour
		50	90	7 7/8	3/8 pea gravel	9	hand pour
6. GEOLOGIC LOG OF WELL	DEPTH (FT)		THICKNESS (FT)	COLOR AND TYPE OF MATERIAL ENCOUNTERED (INCLUDE WATER-BEARING CAVITIES OR FRACTURE ZONES)	WATER BEARING?		
	FROM	TO					
	0	90	90	sandy fill	<input checked="" type="checkbox"/> YES	<input type="checkbox"/> NO	
					<input type="checkbox"/> YES	<input type="checkbox"/> NO	
					<input type="checkbox"/> YES	<input type="checkbox"/> NO	
					<input type="checkbox"/> YES	<input type="checkbox"/> NO	
					<input type="checkbox"/> YES	<input type="checkbox"/> NO	
					<input type="checkbox"/> YES	<input type="checkbox"/> NO	
					<input type="checkbox"/> YES	<input type="checkbox"/> NO	
					<input type="checkbox"/> YES	<input type="checkbox"/> NO	
					<input type="checkbox"/> YES	<input type="checkbox"/> NO	
					<input type="checkbox"/> YES	<input type="checkbox"/> NO	
					<input type="checkbox"/> YES	<input type="checkbox"/> NO	
					<input type="checkbox"/> YES	<input type="checkbox"/> NO	
					<input type="checkbox"/> YES	<input type="checkbox"/> NO	
	ATTACH ADDITIONAL PAGES AS NEEDED TO FULLY DESCRIBE THE GEOLOGIC LOG OF THE WELL						
	7. TEST & ADDITIONAL INFO	WELL TEST		METHOD: <input type="checkbox"/> BAILER <input type="checkbox"/> PUMP <input checked="" type="checkbox"/> AIR LIFT <input type="checkbox"/> OTHER - SPECIFY:			
TEST RESULTS - ATTACH A COPY OF DATA COLLECTED DURING WELL TESTING, INCLUDING START TIME, END TIME, AND A TABLE SHOWING DISCHARGE AND DRAWDOWN OVER THE TESTING PERIOD.							
ADDITIONAL STATEMENTS OR EXPLANATIONS:							
8. SIGNATURE	THE UNDERSIGNED HEREBY CERTIFIES THAT, TO THE BEST OF HIS OR HER KNOWLEDGE AND BELIEF, THE FOREGOING IS A TRUE AND CORRECT RECORD OF THE ABOVE DESCRIBED HOLE AND THAT HE OR SHE WILL FILE THIS WELL RECORD WITH THE STATE ENGINEER AND THE PERMIT HOLDER WITHIN 20 DAYS AFTER COMPLETION OF WELL DRILLING:						
	 SIGNATURE OF DRILLER			1-26-2012 DATE			

2012 FEB 26  
 STATE OF TEXAS  
 OFFICE OF THE STATE ENGINEER  
 AUSTIN, TEXAS

FOR USE INTERNAL USE

WELL RECORD &amp; LOG (Version 6/9/08)

FILE NUMBER	SI-3987	POD NUMBER		TRN NUMBER	
LOCATION	31N-12W-01-121				PAGE 2 OF 2





# WELL RECORD & LOG

OFFICE OF THE STATE ENGINEER

[www.ose.state.nm.us](http://www.ose.state.nm.us)

STATE ENGINEER'S OFFICE  
AZTEC, NEW MEXICO

2012 FEB -8 PM 12:43

1. GENERAL AND WELL LOCATION	POD NUMBER (WELL NUMBER)				OSE FILE NUMBER(S) SJ-3995			
	WELL OWNER NAME(S) Brice Lee				PHONE (OPTIONAL) 970-588-3369			
	WELL OWNER MAILING ADDRESS 940 CR 119				CITY Hesperus		STATE CO	ZIP 81326
	WELL LOCATION (FROM GPS)	DEGREES LATITUDE 36	MINUTES 56	SECONDS .53 N	* ACCURACY REQUIRED: ONE TENTH OF A SECOND * DATUM REQUIRED: WGS 84			
DESCRIPTION RELATING WELL LOCATION TO STREET ADDRESS AND COMMON LANDMARKS								
2. OPTIONAL	(2.5 ACRE) 1/4	(10 ACRE) 1/4	(40 ACRE) NE 1/4	(160 ACRE) NW 1/4	SECTION 01	TOWNSHIP 31 <input checked="" type="checkbox"/> NORTH <input type="checkbox"/> SOUTH	RANGE 12 <input type="checkbox"/> EAST <input checked="" type="checkbox"/> WEST	
	SUBDIVISION NAME				LOT NUMBER	BLOCK NUMBER	UNIT/TRACT	
	HYDROGRAPHIC SURVEY				MAP NUMBER		TRACT NUMBER	
3. DRILLING INFORMATION	LICENSE NUMBER WD 1357		NAME OF LICENSED DRILLER Mark Bailey			NAME OF WELL DRILLING COMPANY Bailey Drilling Company		
	DRILLING STARTED 1-25-12		DRILLING ENDED 1-25-12		DEPTH OF COMPLETED WELL (FT) 160	BORE HOLE DEPTH (FT) 160	DEPTH WATER FIRST ENCOUNTERED (FT) 60	
	COMPLETED WELL IS: <input type="checkbox"/> ARTESIAN <input type="checkbox"/> DRY HOLE <input checked="" type="checkbox"/> SHALLOW (UNCONFINED)					STATIC WATER LEVEL IN COMPLETED WELL (FT) 50		
	DRILLING FLUID: <input checked="" type="checkbox"/> AIR <input type="checkbox"/> MUD <input type="checkbox"/> ADDITIVES - SPECIFY:							
	DRILLING METHOD: <input checked="" type="checkbox"/> ROTARY <input type="checkbox"/> HAMMER <input type="checkbox"/> CABLE TOOL <input type="checkbox"/> OTHER - SPECIFY:							
	DEPTH (FT) FROM TO		BORE HOLE DIA. (IN)	CASING MATERIAL	CONNECTION TYPE (CASING)	INSIDE DIA. CASING (IN)	CASING WALL THICKNESS (IN)	SLOT SIZE (IN)
	0 160		7 7/8	PVC	glued	5	sch 40	1/16X4
4. WATER BEARING STRATA	DEPTH (FT) FROM TO		THICKNESS (FT)	FORMATION DESCRIPTION OF PRINCIPAL WATER-BEARING STRATA (INCLUDE WATER-BEARING CAVITIES OR FRACTURE ZONES)				YIELD (GPM)
	0 80		80	sand and clay				1
METHOD USED TO ESTIMATE YIELD OF WATER-BEARING STRATA air lift						TOTAL ESTIMATED WELL YIELD (GPM) 1		

FOR OSE INTERNAL USE

WELL RECORD & LOG (Version 6/9/08)

FILE NUMBER SJ-3995	POD NUMBER 1	TRN NUMBER
LOCATION 31N. 12W. 01. 100		PAGE 1 OF 2

<b>5. SEAL AND PUMP</b>	TYPE OF PUMP: <input type="checkbox"/> SUBMERSIBLE <input type="checkbox"/> JET <input checked="" type="checkbox"/> NO PUMP - WELL NOT EQUIPPED <input type="checkbox"/> TURBINE <input type="checkbox"/> CYLINDER <input type="checkbox"/> OTHER - SPECIFY:						
	ANNULAR SEAL AND GRAVEL PACK	DEPTH (FT)		BORE HOLE DIA. (IN)	MATERIAL TYPE AND SIZE	AMOUNT (CUBIC FT)	METHOD OF PLACEMENT
		FROM	TO				
		0	20				
		40	160				


  

<b>6. GEOLOGIC LOG OF WELL</b>	DEPTH (FT)		THICKNESS (FT)	COLOR AND TYPE OF MATERIAL ENCOUNTERED (INCLUDE WATER-BEARING CAVITIES OR FRACTURE ZONES)	WATER BEARING?		
	FROM	TO					
	0	80	80	sandy clay - brn	<input checked="" type="checkbox"/> YES	<input type="checkbox"/> NO	
	80	120	40	shale - gray	<input type="checkbox"/> YES	<input checked="" type="checkbox"/> NO	
	120	160	40	sandstone - brn	<input type="checkbox"/> YES	<input checked="" type="checkbox"/> NO	
					<input type="checkbox"/> YES	<input type="checkbox"/> NO	
					<input type="checkbox"/> YES	<input type="checkbox"/> NO	
					<input type="checkbox"/> YES	<input type="checkbox"/> NO	
					<input type="checkbox"/> YES	<input type="checkbox"/> NO	
					<input type="checkbox"/> YES	<input type="checkbox"/> NO	
					<input type="checkbox"/> YES	<input type="checkbox"/> NO	
					<input type="checkbox"/> YES	<input type="checkbox"/> NO	
					<input type="checkbox"/> YES	<input type="checkbox"/> NO	
					<input type="checkbox"/> YES	<input type="checkbox"/> NO	
					<input type="checkbox"/> YES	<input type="checkbox"/> NO	
					<input type="checkbox"/> YES	<input type="checkbox"/> NO	
	ATTACH ADDITIONAL PAGES AS NEEDED TO FULLY DESCRIBE THE GEOLOGIC LOG OF THE WELL.						

<b>7. TEST &amp; ADDITIONAL INFO</b>	WELL TEST	METHOD: <input type="checkbox"/> BAILER <input type="checkbox"/> PUMP <input checked="" type="checkbox"/> AIR LIFT <input type="checkbox"/> OTHER - SPECIFY:				
		TEST RESULTS - ATTACH A COPY OF DATA COLLECTED DURING WELL TESTING, INCLUDING START TIME, END TIME, AND A TABLE SHOWING DISCHARGE AND DRAWDOWN OVER THE TESTING PERIOD.				
	ADDITIONAL STATEMENTS OR EXPLANATIONS:					

<b>8. SIGNATURE</b>	THE UNDERSIGNED HEREBY CERTIFIES THAT, TO THE BEST OF HIS OR HER KNOWLEDGE AND BELIEF, THE FOREGOING IS A TRUE AND CORRECT RECORD OF THE ABOVE DESCRIBED HOLE AND THAT HE OR SHE WILL FILE THIS WELL RECORD WITH THE STATE ENGINEER AND THE PERMIT HOLDER WITHIN 20 DAYS AFTER COMPLETION OF WELL DRILLING:	
	 SIGNATURE OF DRILLER	1-26-2012 DATE

FOR USE INTERNAL USE

WELL RECORD &amp; LOG (Version 6/9/08)

FILE NUMBER SJ-3995	POD NUMBER 1	TRN NUMBER
LOCATION 31N. 12W. 01. 120		PAGE 2 OF 2





## Hillstrom 1 Drip



November 17, 2020

**Wetlands**

- Estuarine and Marine Deepwater
- Estuarine and Marine Wetland

- Freshwater Emergent Wetland
- Freshwater Forested/Shrub Wetland
- Freshwater Pond

- Lake
- Other
- Riverine

This map is for general reference only. The US Fish and Wildlife Service is not responsible for the accuracy or currentness of the base data shown on this map. All wetlands related data should be used in accordance with the layer metadata found on the Wetlands Mapper web site.

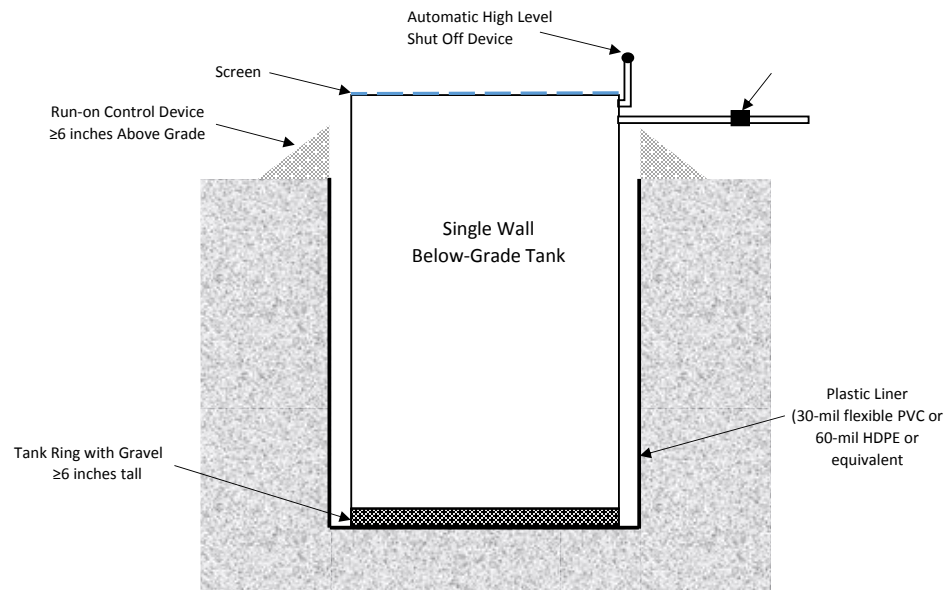
**Harvest Four Corners LLC**  
**Design and Construction Plan - Below Grade Tanks**

In accordance with Rule 19.15.17.11 NMAC of the New Mexico Administrative Code (NMAC), the information within this document describes the design and construction standards to be used by Harvest Four Corners LLC (Harvest) when installing Below Grade Tanks (BGTs). This is Harvest's standard procedure for all BGTs. A separate design and construction plan will be submitted for any BGT which does not conform to this plan.

Pit Rule Citation (NMAC)	Rule Requirement	Operator Requirements
19.15.17.11.A	Design	Harvest will design and construct a properly sized and approved BGT to contain liquids and solids, prevent contamination of fresh water and protect public health and environment. A solid riser pipe will be installed to facilitate liquid removal from the tank. The riser shall have a cap or cover and be positioned to prevent standing accumulation of liquids within the riser.
19.15.17.11.C	Construction	Harvest will post appropriate signage to include operator name, legal location information, and emergency telephone contact information. The sign will be at least 12-inches x 24-inches with lettering not less than 2-inches in height and be placed on the fence surrounding the BGT.
19.15.17.11.D(1)	Construction	Harvest will fence the BGT in a manner that deters unauthorized access and will maintain the fence in good repair. Harvest facilities with an exterior perimeter fence will not have a fence installed around the BGT if it is located within the facility exterior perimeter fence.
19.15.17.11.D(3)	Construction	BGT installations will be fenced to protect livestock and wildlife. Fencing will be a minimum of four feet high with four strands of barbed wire spaced in the interval between one foot and four feet above ground. As a variance (if approved with the BGT registration), the fence may be constructed using four 4 foot tall "hog wire" with 1 stand of barbed wire at the top.
19.15.17.11.E	Construction	BGTs will have one-inch (or less) steel mesh (i.e. expanded metal), solid steel covers, or otherwise be constructed to prevent migratory bird contact.
19.15.17.11.I(1)	Design/Construction	Harvest will design and construct the BGT to contain liquids associated with the dehydration and compression of natural gas, which will be resistant to the contents of the tank and resistant to damage from ultra violet light.
19.15.17.11.I(2)	Construction	The BGT foundation will be level and free of rocks, debris, sharp edges or irregularities and have a firm compacted bottom and sidewalls that are stable for the soil conditions.
19.15.17.11.I(3)	Construction	BGT installations will include an earthen berm or equivalent alternative at least 6-inches above ground to prevent surface water run-on; and install overflow monitoring device and/or monitor the tank at a frequency to prevent overflow as depicted in Figure 1.
19.15.17.11.I.4(a)	Construction	For BGTs that do not have double walls, Harvest will construct the BGT to meet the requirements listed in 19.15.17.11.I.4(a) associated with visual inspection, tank construction, liner, and overflow as depicted in Figure 1. All other BGTs, in which the side walls are not open for visible inspection shall be double walled with leak detection capability as depicted in Figure 2.
19.15.17.11.I.4.(b)	Construction	Buried BGTs will be constructed of steel with double-walls and double-bottom, welded following appropriate API and industry codes, coated with an epoxy based paint. A solid riser pipe will be installed between the space of the double-walls to allow monthly inspection to determine tank integrity.
19.15.17.11.I.4.(c)	Design/Construction	Harvest will meet with NMOCD district office before submitting application for an alternative BGT design.
19.15.17.11.I(5)	Construction	A single walled tank (installed prior to June 16, 2008) which has completely open sidewalls for visible inspection and which may or may not have a geomembrane liner, need not meet the above design and construction standards defined in Paragraphs (1) through (4) of Subsection I of 19.15.17.11 NMAC unless the integrity fails. If the integrity fails, the tank will then be closed pursuant to the approved Closure Plan or be retrofitted in accordance with the design drawings (see Figures 1 or 2) or NMOCD approved modification. Retrofitting actions that include changes to the BGT design and construction require an update to the BGT registration.
19.15.17.11.I(6)	Construction	All single walled BGTs must have sidewalls that are completely visible for inspection. Single walled tanks that do not meet this requirement must be retrofitted or closed pursuant to the approved Closure Plan. Retrofitting actions that include changes to the BGT design and construction require an update to the BGT registration.
19.15.17.11.I(7)	Construction	A double walled tank (installed prior to June 16, 2008) need not meet the above design and construction standards defined in Paragraphs (1) through (4) of Subsection I of 19.15.17.11 NMAC unless the integrity fails. If the integrity fails, the tank will then be closed pursuant to the approved Closure Plan or be retrofitted in accordance with the design drawings (see Figures 1 or 2) or NMOCD approved modification. Retrofitting actions that include changes to the BGT design and construction require an update to the BGT registration.

**Harvest Four Corners LLC**  
**Design and Construction Plan - Below Grade Tanks**

**FIGURE 1. BGT DESIGN AND CONSTRUCTION – 19.15.17.11.I.(4)(a) NMAC**



1. The BGT's bottom must be elevated a minimum of six inches above the underlying ground surface.
2. The BGT must be underlain with a geomembrane liner to divert leaked liquid to a location that can be visually inspected. Gravel will be contained within a tank ring and not cover the visible portion of the liner.
3. Geomembrane liner shall consist of 30-mil flexible PVC or 60-mil HDPE liner, or an equivalent liner material. The liner must have a hydraulic conductivity no greater than  $1 \times 10^{-9}$  cm/sec, be composed of an impervious, synthetic material that is resistant to petroleum hydrocarbons, salts and acidic and alkaline solutions, and resistant to ultraviolet light. The liner compatibility must comply with USEPA SW-
4. Equipped with a properly operating automatic high-level shut-off control device and manual controls to prevent overflows.



### Harvest Four Corners LLC Operations and Maintenance Plan - Below Grade Tanks

In accordance with Rule 19.15.17.12 NMAC of the New Mexico Administrative Code (NMAC), the information within this document describes the operations and maintenance standards to be used by Harvest Four Corners LLC (Harvest) when operating Below Grade Tanks (BGTs). This is Harvest's standard procedure for all BGTs. A separate operations and maintenance plan will be submitted for any BGT which does not conform to this plan.

Pit Rule Citation (NMAC)	Rule Requirement	Operator Requirements
19.15.17.12.A(1)	Integrity	Harvest will operate and maintain the BGT to contain liquids and solids and maintain the integrity of the liner, liner systems and secondary containment system to prevent contamination of fresh water and protect public health and environment.
19.15.17.12.A(3)	Waste Management	Willams will not discharge or store any hazardous waste in a BGT. "Hazardous waste" means non-exempt waste that exceeds the minimum standards for waste hazardous by characteristics established in RCRA regulations, 40 CFR 261.21-261.24, or listed hazardous waste as defined in 40 CFR, part 261, subpart D, as amended.
19.15.17.12.A(5)	Release Requirements	If the BGT integrity is compromised: 1. All discharges will be shut off to the BGT. 2. All liquids will be removed as soon as possible but no later than 48 hours after discovery. 3. Harvest will notify and report to NMOC in accordance to 19.15.29 NMAC and all other applicable agencies as require.
19.15.17.12.A(7)	Surface Water Run-on	Harvest will maintain a berm or equivalent alternative at least 6-inches above ground to keep surface water run-on from entering the BGT as shown on the Design and Construction Plan.
19.15.17.12.D(1)	Surface Water Run-on and Overflow	Harvest will require and maintain an adequate freeboard to prevent overtopping of the BGT.
19.15.17.12.D(2)	Measurable Oil	Any oil or hydrocarbon collecting in the BGT will be removed. Saleable condensate will be returned to the facility or field condensate tank. Slop oil from compression will be removed and transported to an offsite recycle facility.
19.15.17.12.D(3)	Inspection	Harvest will inspect the BGT for leakage and damage on a monthly basis. Harvest will document the integrity of each tank at least annually and maintain a written record for five years. Inspections may include: 1. Containment berms adequate and no oil present 2. Tank had no visible signs of corrosion 3. Tank valves, flanges, and hatches had no visible leaks 4. No evidence of significant spillage of produced liquids. 5. BGT cover intact and no signs of dead wildlife. 6. Sidewalls are completely visible for single walled BGTs.
19.15.17.12.D(4)	Freeboard	Harvest will maintain a 10-inch freeboard to prevent overtopping of the BGT.
19.15.17.12.D(5)	Integrity	If the BGT loses integrity, Harvest will repair the damage or close the BGT pursuant to the approved Closure Plan.
19.15.17.12.D(6)	Retrofit or Replacement Requirements	While performing BGT equipment or retrofitting actions, Harvest will visually inspect the area beneath the BGT and document any areas that are wet, discolored or showing other evidence of a release on OCD Form C-141. Harvest will report the concentration of contaminants to the OCD with respect to the standards set forth in Table I of 19.15.17.13 NMAC. Harvest will proceed with the approved Closure Plan if no evidence of impacts are present or concentrations of contaminants are below the OCD standards.

**Harvest Four Corners LLC**  
**Closure Plan - Below Grade Tanks**

In accordance with Rule 19.15.17.13 NMAC of the New Mexico Administrative Code (NMAC), the information within this document describes the closure requirements to be used by Harvest Four Corners LLC (Harvest) when closing Below Grade Tanks (BGTs). This is Harvest's standard procedure for all BGTs. A separate closure plan will be submitted for any BGT closure which does not conform to this plan.

Pit Rule Citation (NMAC)	Rule Requirement	Operator Requirements
19.15.17.13.A	Closure Plan	This plan describes Harvest proposed closure methods and the proposed procedures and protocols to implement and complete BGT closure.
19.15.17.13.C(1)		Prior to commencing BGT closure, Harvest will obtain a NMOCD approved closure plan before any closure activities start. Harvest understands that the NMOCD considers the start of closure for a BGT is when the BGT is being removed from the ground.
19.15.17.13.C(2)		Harvest will remove liquids and sludge from a BGT prior to commencing closure actions and will dispose the material in a NMOCD approved facility.
19.15.17.13.C.3(a)		Following removal of the tank and any liner material, Harvest will test the soils beneath the BGT in accordance with 19.15.17.13.C.3(a) NMAC. Samples will be collected from beneath the liner and/or BGT for obvious stained or wet soils, or any other evidence of contamination.
19.15.17.13.C.3(b)		If any contaminant concentration is higher than the parameters listed in Table I of 19.15.17.13 NMAC, the NMOCD may require additional delineation upon review of the results and Harvest must receive approval before proceeding with closure.
19.15.17.13.C.3(c)		Upon completion of BGT removal, if all contaminant concentrations are less than or equal to the parameters listed in Table I of 19.15.17.13 NMAC, the excavation will be backfilled with non-waste contained, uncontaminated, earthen material.
19.15.17.13.E(1)	Notification	Notice of closure will be given to the surface owner at least 72 hours, but not more than one week, prior to any closure operation via Certified mail. As a variance (if approved with the closure plan), surface owners which are public entities (State, BLM, or Tribal) will be notified by email or phone. The notification of closure will include the following: operators name, well name and API number (if applicable), and location (ULSTR).
19.15.17.13.E(2)		Notice of Closure will be given to the NMOCD office at least 72 hours, but not more than one week, prior to any closure operation via Certified mail. As a variance (if approved with the closure plan), the NMOCD district office will be notified by email or phone. The notification of closure will include the following: operators name, well name and API number (if applicable), and location (ULSTR).
19.15.17.13.F(1)	Reporting	Operator will send the NMOCD a closure report in accordance with 19.15.17.F(1) NMAC within 60 days of closure including the following items: Proof of closure notice, analytical results, backfill information, revegetation, and photo documentation of reclamation. Harvest understands that the NMOCD considers the closure date the day in which the BGT is backfilled and re-contoured. Revegetation is still required but, may be addressed in closure report.
19.15.17.13.G.4(a)	Timing	Within 60 days of cessation of operations, Harvest will remove liquids and sludge from a BGT prior to implementing a closure method and will dispose of the material in a NMOCD approved facility. Disposal facilities to be used by Harvest are listed below based on the listed waste types.
19.15.17.13.G.4(b)		Within 6 months of cessation of operations, Harvest will dispose, recycle, reuse, or reclaim the BGT in a NMOCD approved manner. If required, Harvest will provide documentation of the disposition of the BGT to the NMOCD. Liner materials will be cleaned to remove soils or contaminated material for disposal as solid waste. Disposal facilities to be used by Harvest are listed below based on the listed waste types.
19.15.17.13.H.1(a)	Reclamation	Harvest will reclaim the area by substantially restoring the impacted surface area to the condition that existed prior to oil and gas operations by placement of soil cover as described below for 19.15.17.13.H.2 NMAC. The location and associated areas will be recontoured that approximates the original contour and blends with the surrounding topography and revegetate as described below for 19.15.17.13.H.5 NMAC.
19.15.17.13.H.1(b)		Harvest will submit an alternative plan to be approved by the NMOCD and written approval from the surface owner before submitting the C-144 application.
19.15.17.13.H.1(c)		If a BGT is removed from an area where production operations will continue, the area will be reclaimed in such a way to minimize dust and erosion to the extent practicable.
19.15.17.13.H.2		Cover will include one foot of suitable material, with chloride concentrations less than 600 mg/kg as analyzed by EPA Method 300.0, to establish vegetation at the site, or the background thickness of topsoil, whichever is greater.
19.15.17.13.H.4		Harvest will construct the soil cover to the existing grade to prevent ponding of water and erosion of the cover material.

**Harvest Four Corners LLC  
Closure Plan - Below Grade Tanks**

Pit Rule Citation (NMAC)	Rule Requirement	Operator Requirements
19.15.17.13.H.5(a) 19.15.17.13.H.5(b) 19.15.17.13.H.5(c) 19.15.17.13.H.5(d) 19.15.17.13.H.5(e)	Reclamation	For those portions of the former BGT area no longer in use with the exception where production operations will continue, the area will be reclaimed as nearly as practicable to their original condition or their final land use. Reclamation will begin as early as practical. The areas will be maintained to minimize dust and topsoils placed and contoured to limit erosion control, maintain stability, and preserve surface-water flow patterns. Harvest will seed the disturbed areas the first favorable growing season following closure of the BGT. Harvest will comply with obligations imposed by other applicable federal or tribal agencies in which their re-vegetation and reclamation requirements provide equal or better protection of fresh water, human health and the environment. Harvest will notify the NMOCD when reclamation and re-vegetation is complete.

Summary of Waste Materials and Disposal Facilities	
Waste Types	Disposal Facility
Steel Tank	San Juan County Landfill; Steel Recycling
Fiberglass Tank	San Juan County Landfill; Bondad Landfill; Re-use
Liner (cleaned – absent soil / sludge)	San Juan County Landfill; Bondad Landfill
Sludge	Envirotech; Industrial Ecosystems Inc.; T-N-T; Bondad Landfill
Liquids (Water / Hydrocarbons)	Basin Disposal; Key Energy; T-N-T
Contaminated Soil	Envirotech; Industrial Ecosystems Inc.; T-N-T; Bondad Landfill
Fencing / Miscellaneous	Re-use or Scrap

**Table I  
Closure Criteria for Soils Beneath Below Grade Tanks, Drying Pads Associated with Closed Loop Systems and Pits where contents are Removed**

Depth Below Bottom of pit to ground water less than 10,000 mg/l	Constituent	Method	Limit**
≤50 feet	Chloride	EPA 300.0	600 mg/kg
	TPH	EPA SW-846 Method 418.1	100 mg/kg
	BTEX	EPA SW-846 8021B or 8260B	50 mg/kg
	Benzene	EPA SW-846 8021B or 8260B	10 mg/kg
51 feet – 100 feet	Chloride	EPA 300.0	10,000 mg/kg
	TPH	EPA SW-846 Method 418.1	2,500 mg/kg
	GRO+DRO	EPA SW-846 Method 8015M	1,000 mg/kg
	BTEX	EPA SW-846 8021B or 8260B	50 mg/kg
	Benzene	EPA SW-846 8021B or 8260B	10 mg/kg
≤100 feet	Chloride	EPA 300.0	20,000 mg/kg
	TPH	EPA SW-846 Method 418.1	2,500 mg/kg
	GRO+DRO	EPA SW-846 Method 8015M	1,000 mg/kg
	BTEX	EPA SW-846 8021B or 8260B	50 mg/kg
	Benzene	EPA SW-846	10 mg/kg



**District I**  
1625 N. French Dr., Hobbs, NM 88240  
Phone:(575) 393-6161 Fax:(575) 393-0720

**District II**  
811 S. First St., Artesia, NM 88210  
Phone:(575) 748-1283 Fax:(575) 748-9720

**District III**  
1000 Rio Brazos Rd., Aztec, NM 87410  
Phone:(505) 334-6178 Fax:(505) 334-6170

**District IV**  
1220 S. St Francis Dr., Santa Fe, NM 87505  
Phone:(505) 476-3470 Fax:(505) 476-3462

State of New Mexico  
Energy, Minerals and Natural Resources  
Oil Conservation Division  
1220 S. St Francis Dr.  
Santa Fe, NM 87505

CONDITIONS

Action 11411

CONDITIONS

Operator: Harvest Four Corners, LLC 1111 Travis Street Houston, TX 77002	OGRID: 373888
	Action Number: 11411
	Action Type: [C-144] PIT Generic Plan (C-144)

CONDITIONS

Created By	Condition	Condition Date
jburdine	None	7/20/2022