

NM1 - ____66____

**Operational
Infrastructure and Cell
E-1 Construction
Certification Report**

2B of 4

July 2022

**CQA FIELD REPORT**

Date: 04/15/2022

Client: SCS Engineers**Report #:** 45**Project:** North Ranch Landfill Cell E1/Operational Infrastructure**Job #:** 22-SCS-NRL-01**Location:** Lea Co, NM**Page:** 2 of 2**CONTRACTOR INFORMATION**

Contractor: T-5

Supervisor: C. B.

Contractor:

Supervisor

Equipment on Site:

(3) Volvo articulating haul trucks, (3) Excavators, (2) CAT D6K Dozer, (2) John Deere Tractors, (2) CAT 725 Water Truck, (2) CAT CP56B Compactor, (1) CAT 140M Blade, (2) CAT CS56 Smooth Drum

PROBLEM IDENTIFICATION & CORRECTIVE MEASURES

None observed

Prepared By: Xavier SmithReviewed By: B. Duganiero



CQA FIELD REPORT

Date: 04/16/2022

Client: SCS EngineersReport #: 46Project: North Ranch Landfill Cell E1/Operational InfrastructureJob #: 22-SCS-NRL-01Location: Lea Co, NMPage: 1 of 2CQA Personnel: Xavier SmithDay: SaturdayHours On-Site: 0730-1633Temperature: 50's to 90'sClient Rep.: Travis ClarkCloud Cover: SunnyOwner's Rep.: -Precipitation: N/AVisitors On-Site: NoneWind: 0-31 mph

WORK PERFORMED – COMMENTS – OBSERVATIONS

CQA rep on site at 0730

Cell E1

- 1 truck arrived on site with material. They were unloaded with a forklift, and placed within the storage pad south of Cell E1
- All the material was recorded upon offloading and roll numbers were verified on the approved inventory list.

No other activities required CQA observation. CQA departed from site at 1633.

Prepared By: Xavier SmithReviewed By: B. Duganiero



CQA FIELD REPORT

Date: 04/16/2022

Client: SCS EngineersReport #: 46Project: North Ranch Landfill Cell E1/Operational InfrastructureJob #: 22-SCS-NRL-01Location: Lea Co, NMPage: 2 of 2

CONTRACTOR INFORMATION

Contractor: T-5

Supervisor: C. B.

Contractor:

Supervisor

Equipment on Site:

(3) Volvo articulating haul trucks, (3) Excavators, (2) CAT D6K Dozer, (2) John Deere Tractors, (2) CAT 725 Water Truck, (2) CAT CP56B Compactor, (1) CAT 140M Blade, (2) CAT CS56 Smooth Drum

PROBLEM IDENTIFICATION & CORRECTIVE MEASURES

None observed.

Prepared By: Xavier SmithReviewed By: B. Duganiero



CQA FIELD REPORT

Date: 04/18/2022

Client: SCS EngineersReport #: 47Project: North Ranch Landfill Cell E1/Operational InfrastructureJob #: 22-SCS-NRL-01Location: Lea Co, NMPage: 1 of 3CQA Personnel: Xavier SmithDay: MondayHours On-Site: 0707-1459Temperature: 40's to 70'sClient Rep.: Travis ClarkCloud Cover: SunnyOwner's Rep.: -Precipitation: N/AVisitors On-Site: NoneWind: 0-35 mph

WORK PERFORMED – COMMENTS – OBSERVATIONS

CQA rep on site at 0707

Cell E1

- 5 trucks arrived on site with material. They were unloaded with a forklift, and placed within the storage pad south of Cell E1
- All the material were recorded on offloading and were on the approved inventory list.
- Mustang arrived on site, setting up their trailer southwest of the ramp to Cell E1.
- GCL was deployed on the east berm, from the southeast corner to south of the riser trench. Bentonite was placed in the overlap area, followed by the overlap being heat bonded together.
- Secondary geomembrane was placed on the east slope afterwards, with wedges fusion welding the overlap area starting in the west and going eastbound.
- All seams were air tested. The pressure for the air test was brought up within the acceptable ranged and maintained for 5 minutes.

No other activities required CQA observation. CQA departed from site at 1459.

Prepared By: Xavier SmithReviewed By: B. Duganiero



CQA FIELD REPORT

Date: 04/18/2022

Client: SCS EngineersReport #: 47Project: North Ranch Landfill Cell E1/Operational InfrastructureJob #: 22-SCS-NRL-01Location: Lea Co, NMPage: 2 of 3

CONTRACTOR INFORMATION

Contractor: T-5

Supervisor: C. B.

Contractor:

Supervisor

Equipment on Site:

(3) Volvo articulating haul trucks, (3) Excavators, (2) CAT D6K Dozer, (2) John Deere Tractors, (2) CAT 725 Water Truck, (2) CAT CP56B Compactor, (1) CAT 140M Blade, (2) CAT CS56 Smooth Drum, (3) Fusion Wedges, (2) Extrusion Guns, (2) Skidsteers.

PROBLEM IDENTIFICATION & CORRECTIVE MEASURES

No issues were present on this day.

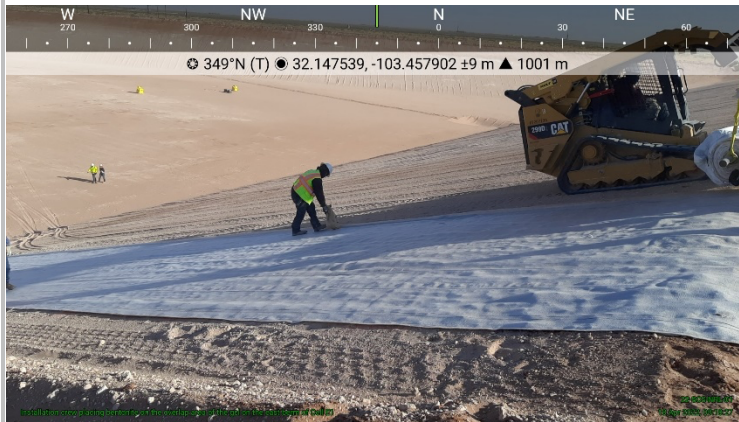
Prepared By: Xavier SmithReviewed By: B. Duganiero



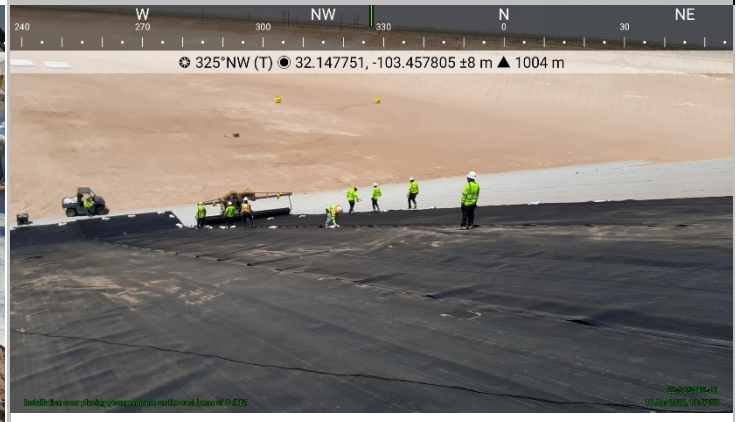
CQA FIELD REPORT

Date:
04/18/2022Client: SCS EngineersReport #: 47Project: North Ranch Landfill Cell E1/Operational InfrastructureJob #: 22-SCS-NRL-01Location: Lea Co, NMPage: 3 of 3

PHOTOGRAPHIC RECORD



Filename: 22-SCS-NRL-01-2022-04-18-09-18-27-Installation crew placing bentonite on the overlap area of the gcl on the east berm of Cell E1 (1)



Filename: 22-SCS-NRL-01-2022-04-18-13-57-55-Installation crew placing geomembrane on the east berm of Cell E1 (1)

Prepared By: Xavier SmithReviewed By: B. Duganiero



CQA FIELD REPORT

Date: 04/19/2022

Client: SCS EngineersReport #: 48Project: North Ranch Landfill Cell E1/Operational InfrastructureJob #: 22-SCS-NRL-01Location: Lea Co, NMPage: 1 of 3CQA Personnel: Xavier SmithDay: TuesdayHours On-Site: 0700-1728Temperature: 40's to 70'sClient Rep.: Travis ClarkCloud Cover: SunnyOwner's Rep.: -Precipitation: N/AVisitors On-Site: NoneWind: 0-35 mph

WORK PERFORMED – COMMENTS – OBSERVATIONS

CQA rep on site at 0700

Cell E1

- 3 trucks arrived on site with material. They were unloaded with a forklift, and placed within the storage pad south of Cell E1
- All the material were recorded on offloading and were on the approved inventory list.
- GCL was deployed on the east berm, from south of the riser trench to south of the northeast corner, and within the sump. Bentonite was placed in the overlap area, followed by the overlap being heat bonded together.
- Secondary geomembrane was placed on the deployed GCL afterwards, with wedges fusion welding the overlap area starting in the west and going eastbound south of the riser trench and starting in the east and going westbound north of the riser trench.
- All seams were air tested. The pressure for the air test was brought up within the acceptable ranged and maintained for 5 minutes.
- 4 destructive samples were marked on the prior day's deployment. All samples were cut, passing the field testing, with the lab sample being sent to FedEx.

No other activities required CQA observation. CQA departed from site at 1728.

Prepared By: Xavier SmithReviewed By: B. Duganiero



CQA FIELD REPORT

Date: 04/19/2022

Client: SCS EngineersReport #: 48Project: North Ranch Landfill Cell E1/Operational InfrastructureJob #: 22-SCS-NRL-01Location: Lea Co, NMPage: 2 of 3

CONTRACTOR INFORMATION

Contractor: T-5

Supervisor: C. B.

Contractor:

Supervisor

Equipment on Site:

(3) Volvo articulating haul trucks, (3) Excavators, (2) CAT D6K Dozer, (2) John Deere Tractors, (2) CAT 725 Water Truck, (2) CAT CP56B Compactor, (1) CAT 140M Blade, (2) CAT CS56 Smooth Drum, (3) Fusion Wedges, (2) Extrusion Guns, (2) Skidsteers.

PROBLEM IDENTIFICATION & CORRECTIVE MEASURES

No issues were observed on this day.

Prepared By: Xavier SmithReviewed By: B. Duganiero



CQA FIELD REPORT

Date: 04/19/2022

Client: SCS EngineersReport #: 48Project: North Ranch Landfill Cell E1/Operational InfrastructureJob #: 22-SCS-NRL-01Location: Lea Co, NMPage: 3 of 3

PHOTOGRAPHIC RECORD



Filename: 20220419_113126
Truck containing GCL being offloaded south of Cell E1



Filename: 20220419_123227
Installation Crew deploying GCL in the sump of Cell E1



Filename: 20220419_175720
Skidsteer transporting liner on the east berm of Cell E1



Filename: 20220419_182310
Installation crew air testing seams on the east berm north of the riser trench

Prepared By: Xavier SmithReviewed By: B. Duganiero



CQA FIELD REPORT

Date: 04/20/2022

Client: SCS EngineersReport #: 49Project: North Ranch Landfill Cell E1/Operational InfrastructureJob #: 22-SCS-NRL-01Location: Lea Co, NMPage: 1 of 3CQA Personnel: Xavier SmithDay: WednesdayHours On-Site: 0714-1805Temperature: 50's to 90'sClient Rep.: Travis ClarkCloud Cover: SunnyOwner's Rep.: -Precipitation: N/AVisitors On-Site: NoneWind: 0-33 mph

WORK PERFORMED – COMMENTS – OBSERVATIONS

CQA rep on site at 0714

Cell E1

- 2 trucks arrived on site with material. They were unloaded with a forklift, and placed within the storage pad south of Cell E1
- All the material were recorded on offloading and were on the approved inventory list.
- GCL was deployed on the north berm, from west of the northeast corner to the northeast corner, then on the east berm, from south of the northeast corner to the northwest corner. Bentonite was placed in the overlap area, followed by the overlap being heat bonded together.
- Secondary geomembrane was placed on the deployed GCL afterwards, with wedges fusion welding the overlap area starting in the southeast and going northwest bound west of the northeast corner to the northeast corner, and starting in the east and going west from south of the northeast corner to the northeast corner. The corner was welded, starting from the northeast going southwest to the toe of the slope of the corner.
- All seams were air tested. The pressure for the air test was brought up within the acceptable ranged and maintained for 5 minutes.
- 6 destructive samples were marked on the prior day's deployment. All samples were cut, passing the field testing, with the lab sample being sent to FedEx.

No other activities required CQA observation. CQA departed from site at 1805.

Prepared By: Xavier SmithReviewed By: B. Duganiero



CQA FIELD REPORT

Date: 04/20/2022

Client: SCS EngineersReport #: 49Project: North Ranch Landfill Cell E1/Operational InfrastructureJob #: 22-SCS-NRL-01Location: Lea Co, NMPage: 2 of 3

CONTRACTOR INFORMATION

Contractor: T-5

Supervisor: C. B.

Contractor:

Supervisor

Equipment on Site:

(3) Volvo articulating haul trucks, (3) Excavators, (2) CAT D6K Dozer, (2) John Deere Tractors, (2) CAT 725 Water Truck, (2) CAT CP56B Compactor, (1) CAT 140M Blade, (2) CAT CS56 Smooth Drum, (3) Fusion Wedges, (2) Extrusion Guns, (2) Skidsteers.

PROBLEM IDENTIFICATION & CORRECTIVE MEASURES

No issues were observed on this day.

Prepared By: Xavier SmithReviewed By: B. Duganiero



CQA FIELD REPORT

Date:
04/20/2022Client: SCS EngineersReport #: 49Project: North Ranch Landfill Cell E1/Operational InfrastructureJob #: 22-SCS-NRL-01Location: Lea Co, NMPage: 3 of 3

PHOTOGRAPHIC RECORD



Filename: 20220420_161519

Installation crew anchoring liner in place using geocomposite roll in northeast corner.



Filename: 20220420_161522

Installation crew fusion welding material on the north slope of Cell E1

Prepared By: Xavier SmithReviewed By: B. Duganiero



CQA FIELD REPORT

Date: 04/21/2022

Client: SCS EngineersReport #: 50Project: North Ranch Landfill Cell E1/Operational InfrastructureJob #: 22-SCS-NRL-01Location: Lea Co, NMPage: 1 of 3CQA Personnel: Xavier SmithDay: ThursdayHours On-Site: 0715-1748Temperature: 50's to 90'sClient Rep.: Travis ClarkCloud Cover: SunnyOwner's Rep.: -Precipitation: N/AVisitors On-Site: NoneWind: 0-28 mph

WORK PERFORMED – COMMENTS – OBSERVATIONS

CQA rep on site at 0715

Cell E1

- GCL was deployed on the north berm, starting from previously deployed GCL west of the northeast corner westbound, stopping shortly southwest of the midway corner. Bentonite was placed in the overlap area, followed by the overlap being heat bonded together.
- Secondary geomembrane was placed on the deployed GCL afterwards, with wedges fusion welding the overlap area starting in the southeast going northwest bound north of the midway corner, and starting northwest going southeast bound south of the midway corner
- All seams were air tested. The pressure for the air test was brought up within the acceptable ranged and maintained for 5 minutes.
- 4 destructive samples were marked on the prior day's deployment. All samples were cut, passing the field testing, with the lab sample being sent to FedEx.

Drying Pads

- PCL was placed on the east drying pad. Material was transported to the area adjacent to the drying pad by haul trucks, then pushed into the area via 1 dozer.

Leachate Pond

- Earthwork crew started excavation of the leachate pond area, using excavators and dozers to remove cut material and placing it in the stockpile southwest of Cell E1

No other activities required CQA observation. CQA departed from site at 1748.

Prepared By: Xavier SmithReviewed By: B. Duganiero



CQA FIELD REPORT

Date: 04/21/2022

Client: SCS EngineersReport #: 50Project: North Ranch Landfill Cell E1/Operational InfrastructureJob #: 22-SCS-NRL-01Location: Lea Co, NMPage: 2 of 3

CONTRACTOR INFORMATION

Contractor: T-5

Supervisor: C. B.

Contractor:

Supervisor

Equipment on Site:

(3) Volvo articulating haul trucks, (3) Excavators, (2) CAT D6K Dozer, (2) John Deere Tractors, (2) CAT 725 Water Truck, (2) CAT CP56B Compactor, (1) CAT 140M Blade, (2) CAT CS56 Smooth Drum, (3) Fusion Wedges, (2) Extrusion Guns, (2) Skidsteers.

PROBLEM IDENTIFICATION & CORRECTIVE MEASURES

No issues were observed on this day.

Prepared By: Xavier SmithReviewed By: B. Duganiero



CQA FIELD REPORT

Date:
04/21/2022Client: SCS EngineersReport #: 50Project: North Ranch Landfill Cell E1/Operational InfrastructureJob #: 22-SCS-NRL-01Location: Lea Co, NMPage: 3 of 3

PHOTOGRAPHIC RECORD



Filename: 20220421_133554

Skidsteer anchoring liner during deployment on the northwest berm of Cell E1

Filename: 20220421_174327

Installation crew anchoring exposed edge of liner while finishing up fusion welding.

Prepared By: Xavier Smith

Reviewed By: _____



CQA FIELD REPORT

Date: 04/22/2022

Client: SCS EngineersReport #: 51Project: North Ranch Landfill Cell E1/Operational InfrastructureJob #: 22-SCS-NRL-01Location: Lea Co, NMPage: 1 of 3CQA Personnel: Xavier SmithDay: FridayHours On-Site: 0700-1511Temperature: 60's to 90'sClient Rep.: Travis ClarkCloud Cover: SunnyOwner's Rep.: -Precipitation: N/AVisitors On-Site: NoneWind: 0-45 mph

WORK PERFORMED – COMMENTS – OBSERVATIONS

CQA rep on site at 0715

Cell E1

- Installation crew began welding of all leistered repairs in all deployed areas of the cell, with 2 individuals removing blown in material from the deployed area. Following the removal of material, the patches were then cleaned, and extrusion welded.
- All repairs were vacuum box tested. The vacuum was brought up to the required psi and held for the required amount of time.
- 7 destructive samples were marked on the prior day's deployment. All samples were cut, passing the field testing, with the lab sample being sent to FedEx.

Leachate Pond

- Earthwork crew started excavation of the leachate pond area, using excavators and dozers to remove cut material and placing it in the stockpile southwest of Cell E1, and finished excavation as well.
- 2 dozers were used to spread material from nearby stockpiles to begin building lifts for the leachate pond and the berm for the leachate pond.

No other activities required CQA observation. CQA departed from site at 1748.

Prepared By: Xavier SmithReviewed By: B. Duganiero



CQA FIELD REPORT

Date: 04/22/2022

Client: SCS EngineersReport #: 51Project: North Ranch Landfill Cell E1/Operational InfrastructureJob #: 22-SCS-NRL-01Location: Lea Co, NMPage: 2 of 3

CONTRACTOR INFORMATION

Contractor: T-5

Supervisor: C. B.

Contractor:

Supervisor

Equipment on Site:

(3) Volvo articulating haul trucks, (3) Excavators, (2) CAT D6K Dozer, (2) John Deere Tractors, (2) CAT 725 Water Truck, (2) CAT CP56B Compactor, (1) CAT 140M Blade, (2) CAT CS56 Smooth Drum, (3) Fusion Wedges, (2) Extrusion Guns, (2) Skidsteers.

PROBLEM IDENTIFICATION & CORRECTIVE MEASURES

No issues were observed on this day.

Prepared By: Xavier SmithReviewed By: B. Duganiero



CQA FIELD REPORT

Date:
04/22/2022Client: SCS EngineersReport #: 51Project: North Ranch Landfill Cell E1/Operational InfrastructureJob #: 22-SCS-NRL-01Location: Lea Co, NMPage: 3 of 3

PHOTOGRAPHIC RECORD



Filename: 20220422_131714

Installation crew vacuum boxing repairs on the toe of the northeast corner of Cell E1



Filename: 20220422_131716

Installation crew removing blown in material from a repair on the east slope.

Prepared By: Xavier SmithReviewed By: B. Duganiero



CQA FIELD REPORT

Date: 04/23/2022

Client: SCS EngineersReport #: 52Project: North Ranch Landfill Cell E1/Operational InfrastructureJob #: 22-SCS-NRL-01Location: Lea Co, NMPage: 1 of 3CQA Personnel: Xavier SmithDay: SaturdayHours On-Site: 0720-1310Temperature: 50's to 80'sClient Rep.: Travis ClarkCloud Cover: SunnyOwner's Rep.: -Precipitation: N/AVisitors On-Site: NoneWind: 8-39 mph

WORK PERFORMED – COMMENTS – OBSERVATIONS

CQA rep on site at 0720

Cell E1

- GCL was deployed on the northwest slope south of midway corner, adjacent to previously deployed GCL. Bentonite was placed in the overlap area before adjacent panels were heat bonded together.
- Liner was deployed on the placed GCL. It was fusion welded, starting from the northwest going southeast bound.
- All seams were air tested. The pressure for the air test was brought up within the acceptable ranged and maintained for 5 minutes.

Leachate Pond

- 2 dozers were used to spread material from nearby stockpiles to begin building lifts for the leachate pond and the berm for the leachate pond.
- 2 tests were taken in the southern half of the leachate pond. Both were within the acceptable range for Proctor and OMC, and passed.

No other activities required CQA observation. Construction was stopped early due to high winds. CQA departed from site at 1310.

Prepared By: Xavier SmithReviewed By: B. Duganiero



CQA FIELD REPORT

Date: 04/23/2022

Client: SCS EngineersReport #: 52Project: North Ranch Landfill Cell E1/Operational InfrastructureJob #: 22-SCS-NRL-01Location: Lea Co, NMPage: 2 of 3

CONTRACTOR INFORMATION

Contractor: T-5

Supervisor: C. B.

Contractor:

Supervisor

Equipment on Site:

(3) Volvo articulating haul trucks, (3) Excavators, (2) CAT D6K Dozer, (2) John Deere Tractors, (2) CAT 725 Water Truck, (2) CAT CP56B Compactor, (1) CAT 140M Blade, (2) CAT CS56 Smooth Drum, (3) Fusion Wedges, (2) Extrusion Guns, (2) Skidsteers.

PROBLEM IDENTIFICATION & CORRECTIVE MEASURES

No issues were observed on this day.

Prepared By: Xavier SmithReviewed By: B. Duganiero



CQA FIELD REPORT

Date:
04/23/2022

Client: SCS Engineers

Report #: 52

Project: North Ranch Landfill Cell E1/Operational Infrastructure

Job #: 22-SCS-NRL-01

Location: Lea Co, NM

Page: 3 of 3

PHOTOGRAPHIC RECORD



Filename: 20220423_074821
Installation crew deploying GCL on the north slope of Cell E1



Filename: 20220423_132405
Dozer spreading material in the east berm area of the leachate pond.

Prepared By: Xavier Smith

Reviewed By: B. Duganiero



CQA FIELD REPORT

Date: 04/25/2022

Client: SCS EngineersReport #: 53Project: North Ranch Landfill Cell E1/Operational InfrastructureJob #: 22-SCS-NRL-01Location: Lea Co, NMPage: 1 of 3CQA Personnel: Xavier SmithDay: MondayHours On-Site: 0700-1700Temperature: 50's to 70'sClient Rep.: Travis ClarkCloud Cover: Cloudy to SunnyOwner's Rep.: -Precipitation: N/AVisitors On-Site: NoneWind: 9-30 mph

WORK PERFORMED – COMMENTS – OBSERVATIONS

CQA rep on site at 0700

Cell E1

- GCL was deployed on the northwest slope south of midway corner to the southwest corner and floor, adjacent to previously deployed GCL. Bentonite was placed in the overlap area before adjacent panels were heat bonded together.
- Liner was deployed on the placed GCL. It was fusion welded, starting from the northwest going southeast bound on the north slope, and starting north going southbound on the floor.
- All seams were air tested. The pressure for the air test was brought up within the acceptable ranged and maintained for 5 minutes.
- 4 destructive sample were taken from previously deployed material. All samples passed field tested and were shipped for lab testing.

Leachate Pond

- 2 dozers were used to spread material from nearby stockpiles to begin building lifts for the leachate pond and the berm for the leachate pond.
- Density tests were taken in the berm of the leachate pond. All tests were within the acceptable range for Proctor and OMC, and passed. See density test log for details.

No other activities required CQA observation. CQA departed from site at 1700.

Prepared By: Xavier SmithReviewed By: B. Duganiero



CQA FIELD REPORT

Date: 04/25/2022

Client: SCS EngineersReport #: 53Project: North Ranch Landfill Cell E1/Operational InfrastructureJob #: 22-SCS-NRL-01Location: Lea Co, NMPage: 2 of 3

CONTRACTOR INFORMATION

Contractor: T-5

Supervisor: C. B.

Contractor:

Supervisor

Equipment on Site:

(3) Volvo articulating haul trucks, (3) Excavators, (2) CAT D6K Dozer, (2) John Deere Tractors, (2) CAT 725 Water Truck, (2) CAT CP56B Compactor, (1) CAT 140M Blade, (2) CAT CS56 Smooth Drum, (3) Fusion Wedges, (2) Extrusion Guns, (2) Skidsteers.

PROBLEM IDENTIFICATION & CORRECTIVE MEASURES

No issues were observed on this date.

Prepared By: Xavier SmithReviewed By: B. Duganiero



CQA FIELD REPORT

Date: 04/25/2022

Client: SCS EngineersReport #: 53Project: North Ranch Landfill Cell E1/Operational InfrastructureJob #: 22-SCS-NRL-01Location: Lea Co, NMPage: 3 of 3

PHOTOGRAPHIC RECORD



Filename: 20220425_081117
Installation crew deploying GCL on the north slope of Cell E1



Filename: 20220425_081123
Installation crew preparing GCL to be deployed on the floor of Cell E1

Prepared By: Xavier Smith

Reviewed By: _____



CQA FIELD REPORT

Date: 04/26/2022

Client: SCS EngineersReport #: 54Project: North Ranch Landfill Cell E1/Operational InfrastructureJob #: 22-SCS-NRL-01Location: Lea Co, NMPage: 1 of 3CQA Personnel: Xavier SmithDay: TuesdayHours On-Site: 0700-1700Temperature: 40's to 70'sClient Rep.: Travis ClarkCloud Cover: Cloudy to SunnyOwner's Rep.: -Precipitation: N/AVisitors On-Site: NoneWind: 3-20 mph

WORK PERFORMED – COMMENTS – OBSERVATIONS

CQA rep on site at 0700

Cell E1

- GCL was deployed on the floor east of the west corner, adjacent to previously deployed GCL, and being deployed eastbound. Bentonite was placed in the overlap area before adjacent panels were heat bonded together.
- Liner was deployed on the placed GCL. It was fusion welded, starting from the north going southbound on the floor.
- All seams were air tested. The pressure for the air test was brought up within the acceptable ranged and maintained for 5 minutes.
- 4 destructive samples were marked on previously deployed material. All samples passed field testing, and were shipped for lab testing.

Leachate Pond

- 1 dozer was used to spread material from nearby stockpiles to begin building lifts for the leachate pond and the berm for the leachate pond. A compactor and a smooth drum was used to compact the lifts after a water truck was used to spread water on placed material.
- Density tests were taken in the berm of the leachate pond. All tests were within the acceptable range for Proctor and OMC, and passed. See Density Test Log for details.

No other activities required CQA observation. CQA departed from site at 1700.

Prepared By: Xavier SmithReviewed By: B. Duganiero



CQA FIELD REPORT

Date: 04/26/2022

Client: SCS EngineersReport #: 54Project: North Ranch Landfill Cell E1/Operational InfrastructureJob #: 22-SCS-NRL-01Location: Lea Co, NMPage: 2 of 3

CONTRACTOR INFORMATION

Contractor: T-5

Supervisor: C. B.

Contractor:

Supervisor

Equipment on Site:

(3) Volvo articulating haul trucks, (3) Excavators, (2) CAT D6K Dozer, (2) John Deere Tractors, (2) CAT 725 Water Truck, (2) CAT CP56B Compactor, (1) CAT 140M Blade, (2) CAT CS56 Smooth Drum, (3) Fusion Wedges, (2) Extrusion Guns, (2) Skidsteers.

PROBLEM IDENTIFICATION & CORRECTIVE MEASURES

No issues were observed on this date.

Prepared By: Xavier SmithReviewed By: B. Duganiero



CQA FIELD REPORT

 Date:
04/26/2022

 Client: SCS Engineers

 Report #: 54

 Project: North Ranch Landfill Cell E1/Operational Infrastructure

 Job #: 22-SCS-NRL-01

 Location: Lea Co, NM

 Page: 3 of 3

PHOTOGRAPHIC RECORD


 Filename: 20220426_165046
 Compactor compacting lift on the east berm of the leachate pond

 Filename: 20220426_165048
 Haul truck transporting material in the east berm area of the leachate pond.

 Prepared By: Xavier Smith

 Reviewed By: B. Duganiero



CQA FIELD REPORT

Date: 04/27/2022

Client: SCS EngineersReport #: 55Project: North Ranch Landfill Cell E1/Operational InfrastructureJob #: 22-SCS-NRL-01Location: Lea Co, NMPage: 1 of 3CQA Personnel: Xavier SmithDay: WednesdayHours On-Site: 0700-1710Temperature: 50's to 80'sClient Rep.: Travis ClarkCloud Cover: Cloudy to SunnyOwner's Rep.: -Precipitation: N/AVisitors On-Site: NoneWind: 12-30 mph

WORK PERFORMED – COMMENTS – OBSERVATIONS

CQA rep on site at 0700

Cell E1

- GCL was deployed on the floor east of previously deployed GCL and being deployed eastbound. Bentonite was placed in the overlap area before adjacent panels were heat bonded together.
- Liner was deployed on the placed GCL. It was fusion welded, starting from the north going southbound on the floor.
- All seams were air tested. The pressure for the air test was brought up within the acceptable ranged and maintained for 5 minutes.
- 7 destructive samples were marked on previously deployed material. All samples passed field testing and were shipped for lab testing.

Leachate Pond

- 1 dozer was used to spread material from nearby stockpiles to begin building lifts for the leachate pond and the berm for the leachate pond. A compactor and a smooth drum was used to compact the lifts after a water truck was used to spread water on placed material.
- Density testing was performed in the berm of the leachate pond. Tests results were within the acceptable range for Proctor and OMC, and passed.

No other activities required CQA observation. CQA departed from site at 1710.

Prepared By: Xavier SmithReviewed By: B. Duganiero



CQA FIELD REPORT

Date: 04/27/2022

Client: SCS EngineersReport #: 55Project: North Ranch Landfill Cell E1/Operational InfrastructureJob #: 22-SCS-NRL-01Location: Lea Co, NMPage: 2 of 3

CONTRACTOR INFORMATION

Contractor: T-5

Supervisor: C. B.

Contractor:

Supervisor

Equipment on Site:

(3) Volvo articulating haul trucks, (3) Excavators, (2) CAT D6K Dozer, (2) John Deere Tractors, (2) CAT 725 Water Truck, (2) CAT CP56B Compactor, (1) CAT 140M Blade, (2) CAT CS56 Smooth Drum, (3) Fusion Wedges, (2) Extrusion Guns, (2) Skidsteers.

PROBLEM IDENTIFICATION & CORRECTIVE MEASURES

Considerable number of the earthwork crew's construction equipment was temporarily out of commission due to environmental conditions.

Most of the construction equipment was made operable again before end of day.

Prepared By: Xavier SmithReviewed By: B. Duganiero



CQA FIELD REPORT

Date: 04/27/2022

Client: SCS Engineers

Report #: 55

Project: North Ranch Landfill Cell E1/Operational Infrastructure

Job #: 22-SCS-NRL-01

Location: Lea Co, NM

Page: 3 of 3

PHOTOGRAPHIC RECORD



Filename: 20220427_155411

Installation crew anchoring edge of liner in the floor of Cell E1



Filename: 20220427_170335

Skidsteer transporting additional sandbags to the toe of the east slope of Cell E1



Filename: 20220427_170431

Excavator placing material onto a haul truck from a stockpile west of leachate pond



Filename: 20220427_155124

East berm of the leachate pond getting tested



Filename: 20220427_155126

Water truck spreading water on the west berm of the leachate pond



Filename: 20220427_155129

Compacting moving to compact the west berm area of the leachate pond

Prepared By: Xavier SmithReviewed By: B. Duganiero



CQA FIELD REPORT

Date: 04/28/2022

Client: SCS EngineersReport #: 56Project: North Ranch Landfill Cell E1/Operational InfrastructureJob #: 22-SCS-NRL-01Location: Lea Co, NMPage: 1 of 3CQA Personnel: Xavier SmithDay: ThursdayHours On-Site: 0715-1818Temperature: 50's to 90'sClient Rep.: Travis ClarkCloud Cover: SunnyOwner's Rep.: -Precipitation: N/AVisitors On-Site: NoneWind: 6-41 mph

WORK PERFORMED – COMMENTS – OBSERVATIONS

CQA rep on site at 0715

Cell E1

- GCL was deployed on the floor east of previously deployed GCL and being deployed eastbound. Bentonite was placed in the overlap area before adjacent panels were heat bonded together.
- Liner was deployed on the placed GCL. It was fusion welded, starting from the north going southbound on the floor.
- All seams were air tested. The pressure for the air test was brought up within the acceptable range and maintained for 5 minutes.
- 8 destructive samples were marked on previously deployed material. All samples passed field testing, and were shipped for lab testing.

Leachate Pond

- 1 dozer was used to spread material from nearby stockpiles to begin building lifts for the leachate pond and the berm for the leachate pond. A compactor and a smooth drum was used to compact the lifts after a water truck was used to spread water on placed material.
- Moisture/density tests were taken in the berm of the leachate pond. The test was within the acceptable range for Proctor and OMC, and passed.

Drying Pads

- Construction crew arrived, beginning to make forms and molds in the west drying pad using wooden planks and stakes.
- A dozer was used to bring in additional PCL material into the west drying pad.

No other activities required CQA observation. CQA departed from site at 1818.

Prepared By: Xavier SmithReviewed By: B. Duganiero



CQA FIELD REPORT

Date: 04/29/2022

Client: SCS EngineersReport #: 56Project: North Ranch Landfill Cell E1/Operational InfrastructureJob #: 22-SCS-NRL-01Location: Lea Co, NMPage: 2 of 3

CONTRACTOR INFORMATION

Contractor: T-5

Supervisor: C. B.

Contractor:

Supervisor

Equipment on Site:

(3) Volvo articulating haul trucks, (3) Excavators, (2) CAT D6K Dozer, (2) John Deere Tractors, (2) CAT 725 Water Truck, (2) CAT CP56B Compactor, (1) CAT 140M Blade, (2) CAT CS56 Smooth Drum, (3) Fusion Wedges, (2) Extrusion Guns, (2) Skidsteers.

PROBLEM IDENTIFICATION & CORRECTIVE MEASURES

No problems were observed today.

Prepared By: Xavier SmithReviewed By: B. Duganiero



CQA FIELD REPORT

Date:
04/28/2022Client: SCS EngineersReport #: 56Project: North Ranch Landfill Cell E1/Operational InfrastructureJob #: 22-SCS-NRL-01Location: Lea Co, NMPage: 3 of 3

PHOTOGRAPHIC RECORD



Filename: 20220428_110447
Forms getting setup in the northwest corner of the west drying pad.



Filename: 20220428_134344
Installation crew deploying geomembrane near the east toe of the slope of Cell E1



Filename: 20220428_105815
Construction crew putting in additional forms in the west drying pad



Filename: 20220428_173523
Dozer spreading PCL in the west drying pad.

Prepared By: Xavier SmithReviewed By: B. Duganiero



CQA FIELD REPORT

Date: 04/29/2022

Client: SCS EngineersReport #: 57Project: North Ranch Landfill Cell E1/Operational InfrastructureJob #: 22-SCS-NRL-01Location: Lea Co, NMPage: 1 of 3CQA Personnel: Xavier SmithDay: FridayHours On-Site: 0715-1710Temperature: 50's to 80'sClient Rep.: Travis ClarkCloud Cover: SunnyOwner's Rep.: -Precipitation: N/AVisitors On-Site: NoneWind: 6-31 mph

WORK PERFORMED – COMMENTS – OBSERVATIONS

CQA rep on site at 0715

Cell E1

- Extrusion welding was used to weld repairs in Cell E1 on the floor from the southwestern corner to the eastern toe of slope.
- All repairs were vacuum boxed, and no issues were discussed in the extrusion welding.
- 10 destructive samples were marked on previously deployed material. All samples passed field testing and were shipped for lab testing.
- Geocomposite was started to be placed, starting in the west corner. All adjacent panels were zip tied together, then stitched.

Leachate Pond

- 1 dozer was used to spread material from nearby stockpiles to begin building lifts for the leachate pond and the berm for the leachate pond. A compactor and a smooth drum was used to compact the lifts after a water truck was used to spread water on placed material.
- Moisture/density tests were taken in the berm of the leachate pond. The tests were within the acceptable range for Proctor and OMC, and passed.

Drying Pads

- Construction crew arrived, beginning to make forms and molds in the west drying pad using wooden planks and stakes.
- A dozer was used to bring in additional PCL material into the west drying pad.

No other activities required CQA observation. CQA departed from site at 1710.

Prepared By: Xavier SmithReviewed By: B. Duganiero



CQA FIELD REPORT

Date: 04/29/2022

Client: SCS EngineersReport #: 57Project: North Ranch Landfill Cell E1/Operational InfrastructureJob #: 22-SCS-NRL-01Location: Lea Co, NMPage: 2 of 3

CONTRACTOR INFORMATION

Contractor: T-5

Supervisor: C. B.

Contractor:

Supervisor

Equipment on Site:

(3) Volvo articulating haul trucks, (3) Excavators, (2) CAT D6K Dozer, (2) John Deere Tractors, (2) CAT 725 Water Truck, (2) CAT CP56B Compactor, (1) CAT 140M Blade, (2) CAT CS56 Smooth Drum, (3) Fusion Wedges, (2) Extrusion Guns, (2) Skidsteers.

PROBLEM IDENTIFICATION & CORRECTIVE MEASURES

No problems were observed today.

Prepared By: Xavier SmithReviewed By: B. Duganiero



CQA FIELD REPORT

Date:
04/29/2022Client: SCS EngineersReport #: 57Project: North Ranch Landfill Cell E1/Operational InfrastructureJob #: 22-SCS-NRL-01Location: Lea Co, NMPage: 3 of 3

PHOTOGRAPHIC RECORD



Filename: 20220429_150110
Excavator preparing to transport PCL in the stockpile south of Cell E1



Filename: 20220429_161125
Installation crew placing material on the geocomposite placed in Cell E1

Prepared By: Xavier SmithReviewed By: B. Duganiero



CQA FIELD REPORT

Date: 04/30/2022

Client: SCS EngineersReport #: 58Project: North Ranch Landfill Cell E1/Operational InfrastructureJob #: 22-SCS-NRL-01Location: Lea Co, NMPage: 1 of 2CQA Personnel: Xavier SmithDay: SaturdayHours On-Site: 0700-1500Temperature: 50's to 80'sClient Rep.: Travis ClarkCloud Cover: SunnyOwner's Rep.: -Precipitation: N/AVisitors On-Site: NoneWind: 7-24 mph

WORK PERFORMED – COMMENTS – OBSERVATIONS

CQA rep on site at 0700

Cell E1

- Extrusion welding was used to weld repairs in Cell E1 on the floor from the center to the eastern toe of slope.
- All repairs were vacuum boxed, and no issues were discussed in the extrusion welding.
- Geocomposite was started to be placed, starting in the west corner. All adjacent panels were zip tied together, then stitched.

No other activities required CQA observation. CQA departed from site at 1500.

Prepared By: Xavier SmithReviewed By: B. Duganiero



CQA FIELD REPORT

Date: 04/30/2022

Client: SCS EngineersReport #: 58Project: North Ranch Landfill Cell E1/Operational InfrastructureJob #: 22-SCS-NRL-01Location: Lea Co, NMPage: 2 of 2

CONTRACTOR INFORMATION

Contractor: T-5

Supervisor: C. B.

Contractor:

Supervisor

Equipment on Site:

(3) Volvo articulating haul trucks, (3) Excavators, (2) CAT D6K Dozer, (2) John Deere Tractors, (2) CAT 725 Water Truck, (2) CAT CP56B Compactor, (1) CAT 140M Blade, (2) CAT CS56 Smooth Drum, (3) Fusion Wedges, (2) Extrusion Guns, (2) Skidsteers.

PROBLEM IDENTIFICATION & CORRECTIVE MEASURES

No problems were observed today.

Prepared By: Xavier SmithReviewed By: B. Duganiero



CQA FIELD REPORT

Date: 05/02/2022

Client: SCS EngineersReport #: 59Project: North Ranch Landfill Cell E1/Operational InfrastructureJob #: 22-SCS-NRL-01Location: Lea Co, NMPage: 1 of 3CQA Personnel: Xavier SmithDay: MondayHours On-Site: 0710-1632Temperature: 60's to 90'sClient Rep.: Travis ClarkCloud Cover: SunnyOwner's Rep.: -Precipitation: N/AVisitors On-Site: NoneWind: 7-29 mph

WORK PERFORMED – COMMENTS – OBSERVATIONS

CQA rep on site at 0710

Cell E1

- Extrusion welding was used to weld repairs in Cell E1 on the floor from the southwestern corner to the eastern toe of slope.
- All repairs were vacuum boxed, and no issues were discussed in the extrusion welding.
- Geocomposite was placed, starting adjacent to previously placed materials. All adjacent panels were zip tied together, then stitched.

Leachate Pond

- 1 dozer was used to spread material from nearby stockpiles to begin building lifts for the leachate pond and the berm for the leachate pond. A compactor and a smooth drum was used to compact the lifts after a water truck was used to spread water on placed material.
- Moisture/density tests were taken in the berm of the leachate pond. All tests were within the acceptable range for Proctor and OMC, and passed.

Drying Pads

- Construction crew arrived, beginning to make forms and molds in the west drying pad building steel rebar pillars
- A dozer was used to bring in additional PCL material into the east drying pad.

No other activities required CQA observation. CQA departed from site at 1632.

Prepared By: Xavier SmithReviewed By: B. Duganiero



CQA FIELD REPORT

Date: 05/02/2022

Client: SCS EngineersReport #: 59Project: North Ranch Landfill Cell E1/Operational InfrastructureJob #: 22-SCS-NRL-01Location: Lea Co, NMPage: 2 of 3

CONTRACTOR INFORMATION

Contractor: T-5

Supervisor: C. B.

Contractor:

Supervisor

Equipment on Site:

(3) Volvo articulating haul trucks, (3) Excavators, (2) CAT D6K Dozer, (2) John Deere Tractors, (2) CAT 725 Water Truck, (2) CAT CP56B Compactor, (1) CAT 140M Blade, (2) CAT CS56 Smooth Drum, (3) Fusion Wedges, (2) Extrusion Guns, (2) Skidsteers.

PROBLEM IDENTIFICATION & CORRECTIVE MEASURES

No problems were observed today.

Prepared By: Xavier SmithReviewed By: B. Duganiero



CQA FIELD REPORT

Date: 05/02/2022

Client: SCS Engineers

Report #: 59

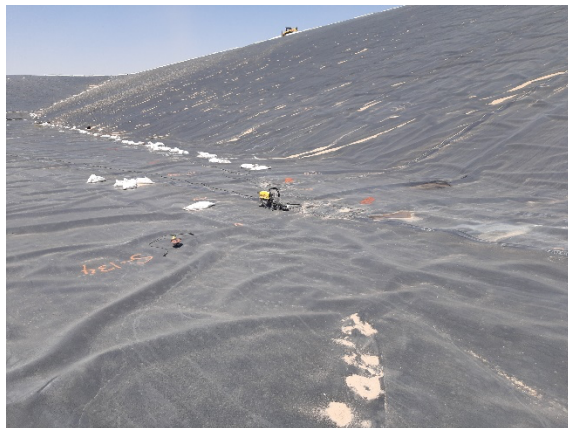
Project: North Ranch Landfill Cell E1/Operational Infrastructure

Job #: 22-SCS-NRL-01

Location: Lea Co, NM

Page: 3 of 3

PHOTOGRAPHIC RECORD



Filename: 20220502_144026
Extrusion gun being prepared for finishing up patches



Filename: 20220502_144033
Skidsteer being used to pull geocomposite for deployment



Filename: 20220502_144036
Installation crew deploying geocomposite on the north slope of Cell E1



Filename: 20220502_162654
Concrete crew taking a short rest in the area south of the west drying pad.

Prepared By: Xavier SmithReviewed By: B. Duganiero



CQA FIELD REPORT

Date: 05/03/2022

Client: SCS EngineersReport #: 60Project: North Ranch Landfill Cell E1/Operational InfrastructureJob #: 22-SCS-NRL-01Location: Lea Co, NMPage: 1 of 3CQA Personnel: Xavier SmithDay: TuesdayHours On-Site: 0710-1715Temperature: 50's to 70'sClient Rep.: Travis ClarkCloud Cover: SunnyOwner's Rep.: -Precipitation: N/AVisitors On-Site: NoneWind: 0-25 mph

WORK PERFORMED – COMMENTS – OBSERVATIONS

CQA rep on site at 0710

Cell E1

- Geocomposite was placed, starting adjacent to previously placed materials. All adjacent panels were zip tied together, then stitched.

Leachate Pond

- 1 dozer was used to spread material from nearby stockpiles to begin building lifts for the leachate pond and the berm for the leachate pond. A compactor and a smooth drum was used to compact the lifts after a water truck was used to spread water on placed material.
- Moisture/density tests were taken in the berm of the leachate pond. The test was within the acceptable range for Proctor and OMC, and passed.

Drying Pads

- Construction crew arrived, beginning to make forms and molds in the west drying pad building steel rebar pillars
- A dozer was used to bring in additional PCL material into the east drying pad.

No other activities required CQA observation. CQA departed from site at 1632.

Prepared By: Xavier SmithReviewed By: B. Duganiero



CQA FIELD REPORT

Date: 05/03/2022

Client: SCS EngineersReport #: 60Project: North Ranch Landfill Cell E1/Operational InfrastructureJob #: 22-SCS-NRL-01Location: Lea Co, NMPage: 2 of 3

CONTRACTOR INFORMATION

Contractor: T-5

Supervisor: C. B.

Contractor:

Supervisor

Equipment on Site:

(3) Volvo articulating haul trucks, (3) Excavators, (2) CAT D6K Dozer, (2) John Deere Tractors, (2) CAT 725 Water Truck, (2) CAT CP56B Compactor, (1) CAT 140M Blade, (2) CAT CS56 Smooth Drum, (3) Fusion Wedges, (2) Extrusion Guns, (2) Skidsteers.

PROBLEM IDENTIFICATION & CORRECTIVE MEASURES

No problems were observed today.

Prepared By: Xavier SmithReviewed By: B. Duganiero



CQA FIELD REPORT

Date: 05/03/2022

Client: SCS EngineersReport #: 60Project: North Ranch Landfill Cell E1/Operational InfrastructureJob #: 22-SCS-NRL-01Location: Lea Co, NMPage: 3 of 3

PHOTOGRAPHIC RECORD



Filename: 20220503_093134
Dozer spreading material on the north leachate berm



Filename: 20220503_124839
Haul truck transporting material to the north leachate berm



Filename: 20220503_124834
Dozer spreading material on the east leachate berm



Filename: 20220503_124841
Density test being taken in the west berm

Prepared By: Xavier SmithReviewed By: B. Duganiero



CQA FIELD REPORT

Date: 05/04/2022

Client: SCS EngineersReport #: 61Project: North Ranch Landfill Cell E1/Operational InfrastructureJob #: 22-SCS-NRL-01Location: Lea Co, NMPage: 1 of 3CQA Personnel: Xavier SmithDay: WednesdayHours On-Site: 0655-1640Temperature: 60's to 80'sClient Rep.: Travis ClarkCloud Cover: SunnyOwner's Rep.: -Precipitation: N/AVisitors On-Site: NoneWind: 7-28 mph

WORK PERFORMED – COMMENTS – OBSERVATIONS

CQA rep on site at 0655

Cell E1

- GCL was deployed on the floor, starting in the southwestern corner and being deployed eastbound on the northern slope.
- Liner was deployed on the placed GCL. It was fusion welded, starting from the north going southbound on the north slope to the trench, then starting from the south going northbound.
- All seams were air tested. The pressure for the air test was brought up within the acceptable ranged and maintained for 5 minutes.

Caliche Road

- 1 dozer was used to spread material from nearby stockpiles to begin building lifts for the Caliche Road west of the western drying pad. A compactor and a smooth drum was used to compact the lifts after a water truck was used to spread water on placed material.
- 5 tests were taken in the berm of the Caliche Road. The test was within the acceptable range for Proctor and OMC, and passed.

Drying Pads

- Construction crew arrived, beginning to make forms and molds in the west drying pad building steel rebar pillars

No other activities required CQA observation. CQA departed from site at 1640.

Prepared By: Xavier SmithReviewed By: B. Duganiero



CQA FIELD REPORT

Date: 05/04/2022

Client: SCS EngineersReport #: 61Project: North Ranch Landfill Cell E1/Operational InfrastructureJob #: 22-SCS-NRL-01Location: Lea Co, NMPage: 2 of 3

CONTRACTOR INFORMATION

Contractor: T-5

Supervisor: C. B.

Contractor:

Supervisor

Equipment on Site:

(3) Volvo articulating haul trucks, (3) Excavators, (2) CAT D6K Dozer, (2) John Deere Tractors, (2) CAT 725 Water Truck, (2) CAT CP56B Compactor, (1) CAT 140M Blade, (2) CAT CS56 Smooth Drum, (3) Fusion Wedges, (2) Extrusion Guns, (2) Skidsteers.

PROBLEM IDENTIFICATION & CORRECTIVE MEASURES

No problems were observed today.

Prepared By: Xavier SmithReviewed By: B. Duganiero



CQA FIELD REPORT

Date:
05/04/2022Client: SCS EngineersReport #: 61Project: North Ranch Landfill Cell E1/Operational InfrastructureJob #: 22-SCS-NRL-01Location: Lea Co, NMPage: 3 of 3

PHOTOGRAPHIC RECORD



Filename: 20220504_161934

Haul truck transporting material to the caliche road west of the western drying pad



Filename: 20220504_161937

Compactor being used to compact material in the Caliche Road

Prepared By: Xavier SmithReviewed By: B. Duganiero



CQA FIELD REPORT

Date: 05/05/2022

Client: SCS EngineersReport #: 62Project: North Ranch Landfill Cell E1/Operational InfrastructureJob #: 22-SCS-NRL-01Location: Lea Co, NMPage: 1 of 3CQA Personnel: Xavier SmithDay: ThursdayHours On-Site: 0700-1800Temperature: 40's to 80'sClient Rep.: Travis ClarkCloud Cover: SunnyOwner's Rep.: -Precipitation: N/AVisitors On-Site: NoneWind: 7-28 mph

WORK PERFORMED – COMMENTS – OBSERVATIONS

CQA rep on site at 0700

Cell E1

- GCL was deployed on the floor, starting in the southwestern corner and being deployed eastbound on the floor.
- Liner was deployed on the placed GCL. It was fusion welded, starting from the north going southbound on the floor.
- All seams were air tested. The pressure for the air test was brought up within the acceptable ranged and maintained for 5 minutes.

Caliche Road

- 1 dozer was used to spread material from nearby stockpiles to begin building lifts for the Caliche Road east of the western berm. A compactor and a smooth drum was used to compact the lifts after a water truck was used to spread water on placed material.
- Moisture/Density tests were taken in the Caliche Road by the lab technician. The tests were within the acceptable range for Proctor and OMC, and passed.

Drying Pads

- Construction crew arrived, beginning to make forms in the west drying pad building steel rebar pillars

No other activities required CQA observation. CQA departed from site at 1800.

Prepared By: Xavier SmithReviewed By: B. Duganiero



CQA FIELD REPORT

Date: 05/05/2022

Client: SCS EngineersReport #: 62Project: North Ranch Landfill Cell E1/Operational InfrastructureJob #: 22-SCS-NRL-01Location: Lea Co, NMPage: 2 of 3

CONTRACTOR INFORMATION

Contractor: T-5

Supervisor: C. B.

Contractor:

Supervisor

Equipment on Site:

(3) Volvo articulating haul trucks, (3) Excavators, (2) CAT D6K Dozer, (2) John Deere Tractors, (2) CAT 725 Water Truck, (2) CAT CP56B Compactor, (1) CAT 140M Blade, (2) CAT CS56 Smooth Drum, (3) Fusion Wedges, (2) Extrusion Guns, (2) Skidsteers.

PROBLEM IDENTIFICATION & CORRECTIVE MEASURES

No problems were observed today.

Prepared By: Xavier SmithReviewed By: B. Duganiero



CQA FIELD REPORT

Date:
05/05/2022Client: SCS EngineersReport #: 62Project: North Ranch Landfill Cell E1/Operational InfrastructureJob #: 22-SCS-NRL-01Location: Lea Co, NMPage: 3 of 3

PHOTOGRAPHIC RECORD



Filename: 20220505_145941
Construction crew preparing to create new forms



Filename: 20220505_150017
Forklift being used to assist the construction crew to create the forms

Prepared By: Xavier SmithReviewed By: B. Duganiero



CQA FIELD REPORT

Date: 05/06/2022

Client: SCS EngineersReport #: 63Project: North Ranch Landfill Cell E1/Operational InfrastructureJob #: 22-SCS-NRL-01Location: Lea Co, NMPage: 1 of 3CQA Personnel: Xavier SmithDay: FridayHours On-Site: 0653-1615Temperature: 50's to 90'sClient Rep.: Travis ClarkCloud Cover: SunnyOwner's Rep.: -Precipitation: N/AVisitors On-Site: NoneWind: 7-24 mph

WORK PERFORMED – COMMENTS – OBSERVATIONS

CQA rep on site at 0653

Cell E1

- Geocomposite was started to be placed, starting in the southern part of the east slope, going northbound. All adjacent panels were zip tied together, then stitched.

Caliche Road

- 1 dozer was used to spread material from nearby stockpiles to begin building lifts for the Caliche Road east of the western berm. A compactor and a smooth drum were used to compact the lifts after a water truck was used to spread water on placed material.
- Moisture/density tests were taken in the Caliche Road by the lab technician. The tests were within the acceptable range for Proctor and OMC and passed.

Drying Pads

- Construction crew arrived, beginning to make forms and molds in the west drying pad building steel rebar pillars

No other activities required CQA observation. CQA departed from site at 1615.

Prepared By: Xavier SmithReviewed By: B. Duganiero



CQA FIELD REPORT

Date: 05/06/2022

Client: SCS EngineersReport #: 63Project: North Ranch Landfill Cell E1/Operational InfrastructureJob #: 22-SCS-NRL-01Location: Lea Co, NMPage: 2 of 3

CONTRACTOR INFORMATION

Contractor: T-5

Supervisor: C. B.

Contractor:

Supervisor

Equipment on Site:

(3) Volvo articulating haul trucks, (3) Excavators, (2) CAT D6K Dozer, (2) John Deere Tractors, (2) CAT 725 Water Truck, (2) CAT CP56B Compactor, (1) CAT 140M Blade, (2) CAT CS56 Smooth Drum, (3) Fusion Wedges, (2) Extrusion Guns, (2) Skidsteers.

PROBLEM IDENTIFICATION & CORRECTIVE MEASURES

No problems were observed today.

Prepared By: Xavier SmithReviewed By: B. Duganiero



CQA FIELD REPORT

Date: 05/06/2022

Client: SCS EngineersReport #: 63Project: North Ranch Landfill Cell E1/Operational InfrastructureJob #: 22-SCS-NRL-01Location: Lea Co, NMPage: 3 of 3

PHOTOGRAPHIC RECORD



Filename: 20220506_134957
Installation crew deploying material on the east slope of Cell E1



Filename: 20220506_135004
Installation crew securing exposed composite edge on the east slope



Filename: 20220506_161357
Skidsteer moving to transport geocomposite on the northeast corner of Cell E1



Filename: 20220506_161408
Installation crew pulling geocomposite into place on the floor of Cell E1

Prepared By: Xavier SmithReviewed By: B. Duganiero



CQA FIELD REPORT

Date: 05/09/2022

Client: SCS EngineersReport #: 64Project: North Ranch Landfill Cell E1/Operational InfrastructureJob #: 22-SCS-NRL-01Location: Lea Co, NMPage: 1 of 3CQA Personnel: Xavier SmithDay: MondayHours On-Site: 0703-1701Temperature: 60's to 90'sClient Rep.: Travis ClarkCloud Cover: SunnyOwner's Rep.: -Precipitation: N/AVisitors On-Site: NoneWind: 7-35 mph

WORK PERFORMED – COMMENTS – OBSERVATIONS

CQA rep on site at 0653

Cell E1

- Extrusion welding was used to weld repairs in Cell E1 on the floor from the western corner to the center of the cell.
- All repairs were vacuum boxed, and no issues were discussed in the extrusion welding.
- The 12" HDPE pipe was placed within the cell in the east riser trench, with the perforated portion being placed within the base of the sump.
- 2' of washed gravel was placed within the sump, followed by a geotextile wrap covering it.

Drying Pads

- Construction crew arrived, beginning to make forms and molds in the east drying pad building steel rebar pillars

No other activities required CQA observation. CQA departed from site at 1615.

Prepared By: Xavier SmithReviewed By: B. Duganiero



CQA FIELD REPORT

Date: 05/09/2022

Client: SCS EngineersReport #: 64Project: North Ranch Landfill Cell E1/Operational InfrastructureJob #: 22-SCS-NRL-01Location: Lea Co, NMPage: 2 of 3

CONTRACTOR INFORMATION

Contractor: T-5

Supervisor: C. B.

Contractor:

Supervisor

Equipment on Site:

(3) Volvo articulating haul trucks, (3) Excavators, (2) CAT D6K Dozer, (2) John Deere Tractors, (2) CAT 725 Water Truck, (2) CAT CP56B Compactor, (1) CAT 140M Blade, (2) CAT CS56 Smooth Drum, (3) Fusion Wedges, (2) Extrusion Guns, (2) Skidsteers.

PROBLEM IDENTIFICATION & CORRECTIVE MEASURES

No problems were observed today.

Prepared By: Xavier SmithReviewed By: B. Duganiero



CQA FIELD REPORT

Date:
05/09/2022Client: SCS EngineersReport #: 64Project: North Ranch Landfill Cell E1/Operational InfrastructureJob #: 22-SCS-NRL-01Location: Lea Co, NMPage: 3 of 3

PHOTOGRAPHIC RECORD



Filename: 20220509_155046
12" pipe being placed within the east trench riser



Filename: 20220509_155101
Construction crew preparing rebar forms in the east drying pad

Prepared By: Xavier SmithReviewed By: B. Duganiero



CQA FIELD REPORT

Date: 05/10/2022

Client: SCS EngineersReport #: 65Project: North Ranch Landfill Cell E1/Operational InfrastructureJob #: 22-SCS-NRL-01Location: Lea Co, NMPage: 1 of 3CQA Personnel: Xavier SmithDay: TuesdayHours On-Site: 0715-1720Temperature: 60's to 90'sClient Rep.: Travis ClarkCloud Cover: SunnyOwner's Rep.: -Precipitation: N/AVisitors On-Site: NoneWind: 7-37 mph

WORK PERFORMED – COMMENTS – OBSERVATIONS

CQA rep on site at 0715

Cell E1

- Liner was deployed on the previously placed geocomposite, starting adjacent to previously deployed material on the north slope heading eastbound to the northeast corner. It was fusion welded, starting on the floor going northbound. Liner was then placed on the east slope going northbound to the northeast corner.
- All seams were air tested. The pressure for the air test was brought up within the acceptable ranged and maintained for 5 minutes.

Drying Pads

- Construction crew arrived, beginning to make forms and molds in the east drying pad building steel rebar pillars

No other activities required CQA observation. CQA departed from site at 1720.

Prepared By: Xavier SmithReviewed By: B. Duganiero



CQA FIELD REPORT

Date: 05/10/2022

Client: SCS EngineersReport #: 65Project: North Ranch Landfill Cell E1/Operational InfrastructureJob #: 22-SCS-NRL-01Location: Lea Co, NMPage: 2 of 3

CONTRACTOR INFORMATION

Contractor: T-5

Supervisor: C. B.

Contractor:

Supervisor

Equipment on Site:

(3) Volvo articulating haul trucks, (3) Excavators, (2) CAT D6K Dozer, (2) John Deere Tractors, (2) CAT 725 Water Truck, (2) CAT CP56B Compactor, (1) CAT 140M Blade, (2) CAT CS56 Smooth Drum, (3) Fusion Wedges, (2) Extrusion Guns, (2) Skidsteers.

PROBLEM IDENTIFICATION & CORRECTIVE MEASURES

No problems were observed today.

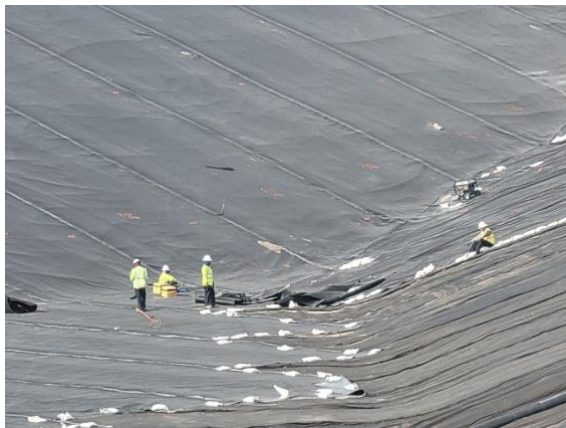
Prepared By: Xavier SmithReviewed By: B. Duganiero



CQA FIELD REPORT

Date:
05/10/2022Client: SCS EngineersReport #: 65Project: North Ranch Landfill Cell E1/Operational InfrastructureJob #: 22-SCS-NRL-01Location: Lea Co, NMPage: 3 of 3

PHOTOGRAPHIC RECORD



Filename: 20220510_171828
Installation crew removing excess cut material in the northeast corner of Cell E1

Filename: 20220510_171832
Installation crew anchoring the geomembrane with sandbags on the east slope



Filename: 20220510_075309
Installation crew using an ATV to deploy liner on the north slope of Cell E1

Filename: 20220511_133040
Construction crew preparing more rebar forms in the east drying pad.

Prepared By: Xavier SmithReviewed By: B. Duganiero



CQA FIELD REPORT

Date: 05/11/2022

Client: SCS EngineersReport #: 66Project: North Ranch Landfill Cell E1/Operational InfrastructureJob #: 22-SCS-NRL-01Location: Lea Co, NMPage: 1 of 3CQA Personnel: Xavier SmithDay: WednesdayHours On-Site: 0704-1515Temperature: 60's to 90'sClient Rep.: Travis ClarkCloud Cover: SunnyOwner's Rep.: -Precipitation: N/AVisitors On-Site: NoneWind: 0-30 mph

WORK PERFORMED – COMMENTS – OBSERVATIONS

CQA rep on site at 0715

Cell E1

- Liner was deployed on the previously placed geocomposite, starting adjacent to previously deployed material on the east slope heading southbound to the southeast corner. It was fusion welded, starting on the floor going westbound north of the riser trench, then eastbound south of the riser trench.
- All seams were air tested. The pressure for the air test was brought up within the acceptable range and maintained for 5 minutes.
- 13 destructive samples were marked on previously deployed material. All samples passed field testing and were shipped for lab testing.

Drying Pads

- Construction crew arrived, beginning to make forms and molds in the east drying pad building steel rebar pillars

No other activities required CQA observation. CQA departed from site at 1720.

Prepared By: Xavier SmithReviewed By: B. Duganiero



CQA FIELD REPORT

Date: 05/11/2022

Client: SCS EngineersReport #: 66Project: North Ranch Landfill Cell E1/Operational InfrastructureJob #: 22-SCS-NRL-01Location: Lea Co, NMPage: 2 of 3

CONTRACTOR INFORMATION

Contractor: T-5

Supervisor: C. B.

Contractor:

Supervisor

Equipment on Site:

(3) Volvo articulating haul trucks, (3) Excavators, (2) CAT D6K Dozer, (2) John Deere Tractors, (2) CAT 725 Water Truck, (2) CAT CP56B Compactor, (1) CAT 140M Blade, (2) CAT CS56 Smooth Drum, (3) Fusion Wedges, (2) Extrusion Guns, (2) Skidsteers.

PROBLEM IDENTIFICATION & CORRECTIVE MEASURES

No problems were observed today.

Prepared By: Xavier SmithReviewed By: B. Duganiero



CQA FIELD REPORT

Date:
05/11/2022Client: SCS EngineersReport #: 66Project: North Ranch Landfill Cell E1/Operational InfrastructureJob #: 22-SCS-NRL-01Location: Lea Co, NMPage: 3 of 3

PHOTOGRAPHIC RECORD



Filename: 20220511_075306
Welder cleaning and preparing overlap for welding on the east slope



Filename: 20220511_133032
Installation crew using ATV to assist deploying liner on the east slope



Filename: 20220511_133047
Construction crew preparing forms in the center of the east drying pad



Filename: 20220511_091047
Installation crew QC cutting marked destruct in the northeast part of Cell E1



Filename: 20220511_133034
Installation crew straightening out the liner on the east slope of Cell E1



Filename: 20220511_133043
Construction crew preparing steel forms in the northern part of the east drying pad

Prepared By: Xavier SmithReviewed By: B. Duganiero



CQA FIELD REPORT

Date: 05/12/2022

Client: SCS EngineersReport #: 67Project: North Ranch Landfill Cell E1/Operational InfrastructureJob #: 22-SCS-NRL-01Location: Lea Co, NMPage: 1 of 3CQA Personnel: Xavier SmithDay: ThursdayHours On-Site: 0715-1701Temperature: 60's to 90'sClient Rep.: Travis ClarkCloud Cover: SunnyOwner's Rep.: -Precipitation: N/AVisitors On-Site: NoneWind: 0-30 mph

WORK PERFORMED – COMMENTS – OBSERVATIONS

CQA rep on site at 0715

Cell E1

- Extrusion welding was used to weld repairs in Cell E1 on the floor from the center of the floor to the northeast corner.
- All repairs were vacuum boxed, and no issues were discussed in the extrusion welding.
- 13 destructive samples were marked on previously deployed material. All samples passed field testing and were shipped for lab testing.

Drying Pads

- Construction crew arrived, beginning to make forms and molds in the east drying pad building steel rebar pillars

No other activities required CQA observation. CQA departed from site at 1701.

Prepared By: Xavier SmithReviewed By: B. Duganiero



CQA FIELD REPORT

Date: 05/12/2022

Client: SCS EngineersReport #: 67Project: North Ranch Landfill Cell E1/Operational InfrastructureJob #: 22-SCS-NRL-01Location: Lea Co, NMPage: 2 of 3

CONTRACTOR INFORMATION

Contractor: T-5

Supervisor: C. B.

Contractor:

Supervisor

Equipment on Site:

(3) Volvo articulating haul trucks, (3) Excavators, (2) CAT D6K Dozer, (2) John Deere Tractors, (2) CAT 725 Water Truck, (2) CAT CP56B Compactor, (1) CAT 140M Blade, (2) CAT CS56 Smooth Drum, (3) Fusion Wedges, (2) Extrusion Guns, (2) Skidsteers.

PROBLEM IDENTIFICATION & CORRECTIVE MEASURES

No problems were observed today.

Prepared By: Xavier SmithReviewed By: B. Duganiero



CQA FIELD REPORT

Date:
05/12/2022Client: SCS EngineersReport #: 67Project: North Ranch Landfill Cell E1/Operational InfrastructureJob #: 22-SCS-NRL-01Location: Lea Co, NMPage: 3 of 3

PHOTOGRAPHIC RECORD



Filename: 20220512_140241
Welder preparing patch to be welded in the northeast corner



Filename: 20220512_140243
Installation crew cutting scrap liner to make a patch in the northeast corner



Filename: 20220512_140245
Installation crew cleaning and grinding a section to be repaired in the east slope



Filename: 20220512_080224
Mobile generator being used to power extrusion guns in the northeast corner



Filename: 20220512_082924
Extrusion welder welding a repair on the floor of Cell E1



Filename: 20220512_082929
Installation crew leistering a patch on the floor of Cell E1

Prepared By: Xavier SmithReviewed By: B. Duganiero



CQA FIELD REPORT

Date: 05/13/2022

Client: SCS EngineersReport #: 68Project: North Ranch Landfill Cell E1/Operational InfrastructureJob #: 22-SCS-NRL-01Location: Lea Co, NMPage: 1 of 3CQA Personnel: Xavier SmithDay: FridayHours On-Site: 0702-1532Temperature: 50's to 90'sClient Rep.: Travis ClarkCloud Cover: SunnyOwner's Rep.: -Precipitation: N/AVisitors On-Site: NoneWind: 0-18 mph

WORK PERFORMED – COMMENTS – OBSERVATIONS

CQA rep on site at 0702

Cell E1

- Geocomposite was placed into the western corner of Cell E1 deploying eastbound. The geonet within the panels were ziptied together, followed by the geotextile component being stitched together
- All repairs were vacuum boxed, and no issues were discussed in the extrusion welding.
- 1 destructive sample was marked on previously deployed material. All samples passed field testing and were shipped for lab testing.

Drying Pads

- Construction crew brought 2 light plants, placing them around the west drying pad.

No other activities required CQA observation. CQA departed from site at 1532.

Prepared By: Xavier SmithReviewed By: B. Duganiero



CQA FIELD REPORT

Date: 05/13/2022

Client: SCS EngineersReport #: 68Project: North Ranch Landfill Cell E1/Operational InfrastructureJob #: 22-SCS-NRL-01Location: Lea Co, NMPage: 2 of 3

CONTRACTOR INFORMATION

Contractor: T-5

Supervisor: C. B.

Contractor:

Supervisor

Equipment on Site:

(3) Volvo articulating haul trucks, (3) Excavators, (2) CAT D6K Dozer, (2) John Deere Tractors, (2) CAT 725 Water Truck, (2) CAT CP56B Compactor, (1) CAT 140M Blade, (2) CAT CS56 Smooth Drum, (3) Fusion Wedges, (2) Extrusion Guns, (2) Skidsteers.

PROBLEM IDENTIFICATION & CORRECTIVE MEASURES

1 destruct failed testing within the lab, and tracking destructs were marked appropriately.

Prepared By: Xavier SmithReviewed By: B. Duganiero



CQA FIELD REPORT

Date:
05/13/2022

Client: SCS Engineers

Report #: 68

Project: North Ranch Landfill Cell E1/Operational Infrastructure

Job #: 22-SCS-NRL-01

Location: Lea Co, NM

Page: 3 of 3

PHOTOGRAPHIC RECORD



Filename: 20220513_092902
Installation crew using ATV to assist deploying geocomposite in Cell E1



Filename: 20220513_093042
Installation crew pulling the geocomposite in line with adjacent panel



Filename: 20220513_093128
Installation crew opening overlap of panels for zip ties on the north slope of Cell E1



Filename: 20220513_094938
Installation crew vacuum boxing repairs within the floor of Cell E1



Filename: 20220513_145304
Installation crew using zip ties to connect geocomposite in Cell E1



Filename: 20220513_153124
Construction crew placing light plant adjacent to western drying pad.

Prepared By: Xavier Smith

Reviewed By: B. Duganiero



CQA FIELD REPORT

Date: 05/14/2022

Client: SCS EngineersReport #: 69Project: North Ranch Landfill Cell E1/Operational InfrastructureJob #: 22-SCS-NRL-01Location: Lea Co, NMPage: 1 of 3CQA Personnel: Xavier SmithDay: FridayHours On-Site: 0648-1544Temperature: 50's to 90'sClient Rep.: Travis ClarkCloud Cover: SunnyOwner's Rep.: -Precipitation: N/AVisitors On-Site: NoneWind: 0-18 mph

WORK PERFORMED – COMMENTS – OBSERVATIONS

CQA rep on site at 0658

Cell E1

- Geocomposite was placed into the northeast corner of Cell E1 deploying eastbound. The geonet within the panels were ziptied together, followed by the geotextile component being stitched together.

Drying Pads

- Concrete crew was onsite, pouring concrete into the west drying pad. The concrete was poured via a concrete mixer with an extended arm, with concrete crews pushing and spreading the material with brooms.
- More rebar and steel forms were created in the east drying pad.

No other activities required CQA observation. CQA departed from site at 1544.

Prepared By: Xavier SmithReviewed By: B. Duganiero



CQA FIELD REPORT

Date: 05/14/2022

Client: SCS EngineersReport #: 69Project: North Ranch Landfill Cell E1/Operational InfrastructureJob #: 22-SCS-NRL-01Location: Lea Co, NMPage: 2 of 3

CONTRACTOR INFORMATION

Contractor: T-5

Supervisor: C. B.

Contractor:

Supervisor

Equipment on Site:

(3) Volvo articulating haul trucks, (3) Excavators, (2) CAT D6K Dozer, (2) John Deere Tractors, (2) CAT 725 Water Truck, (2) CAT CP56B Compactor, (1) CAT 140M Blade, (2) CAT CS56 Smooth Drum, (3) Fusion Wedges, (2) Extrusion Guns, (2) Skidsteers.

PROBLEM IDENTIFICATION & CORRECTIVE MEASURES

None observed.

Prepared By: Xavier SmithReviewed By: B. Duganiero



CQA FIELD REPORT

Date: 05/14/2022

Client: SCS Engineers

Report #: 69

Project: North Ranch Landfill Cell E1/Operational Infrastructure

Job #: 22-SCS-NRL-01

Location: Lea Co, NM

Page: 3 of 3

PHOTOGRAPHIC RECORD



Filename: 20220514_071430
Rebar forms being made in the east drying pad



Filename: 20220514_100125
Installation crew using an ATV to assist pulling the liner on the north slope.



Filename: 20220514_100234
ATV being used to assist deploy the liner near the northeast corner of the floor.



Filename: 20220514_071235
Concrete crew using device to cool the concrete in the west drying pad.



Filename: 20220514_071239
Concrete crew spreading material in the eastern part of the west drying pad.



Filename: 20220514_154232
Construction crew clearing clog in the extended arm of the concrete mixer.

Prepared By: Xavier SmithReviewed By: B. Duganiero



CQA FIELD REPORT

Date: 05/16/2022

Client: SCS EngineersReport #: 70Project: North Ranch Landfill Cell E1/Operational InfrastructureJob #: 22-SCS-NRL-01Location: Lea Co, NMPage: 1 of 3CQA Personnel: Xavier SmithDay: MondayHours On-Site: 0700-1628Temperature: 60's to 90'sClient Rep.: Travis ClarkCloud Cover: Sunny to CloudyOwner's Rep.: -Precipitation: N/AVisitors On-Site: NoneWind: 13-38 mph

WORK PERFORMED – COMMENTS – OBSERVATIONS

CQA rep on site at 0700

Cell E1

- Liner was deployed on the previously placed geocomposite, starting adjacent to previously deployed material on the center of the floor, heading eastbound to the toe of the east slope. It was fusion welded, starting on the floor going southbound.
- All seams were air tested. The pressure for the air test was brought up within the acceptable ranged and maintained for 5 minutes.
- Extrusion welding was used to weld repairs in Cell E1 on the floor from the center of the floor to the toe of the east slope.
- All repairs were vacuum boxed, and no issues were discussed in the extrusion welding.

Drying Pads

- Construction crew arrived, beginning to make forms in the east drying pad building steel rebar pillars

No other activities required CQA observation. CQA departed from site at 1628.

Prepared By: Xavier SmithReviewed By: B. Duganiero



CQA FIELD REPORT

Date: 05/16/2022

Client: SCS EngineersReport #: 70Project: North Ranch Landfill Cell E1/Operational InfrastructureJob #: 22-SCS-NRL-01Location: Lea Co, NMPage: 2 of 3

CONTRACTOR INFORMATION

Contractor: T-5

Supervisor: C. B.

Contractor:

Supervisor

Equipment on Site:

(3) Volvo articulating haul trucks, (3) Excavators, (2) CAT D6K Dozer, (2) John Deere Tractors, (2) CAT 725 Water Truck, (2) CAT CP56B Compactor, (1) CAT 140M Blade, (2) CAT CS56 Smooth Drum, (3) Fusion Wedges, (2) Extrusion Guns, (2) Skidsteers.

PROBLEM IDENTIFICATION & CORRECTIVE MEASURES

No problems were observed on this day.

Prepared By: Xavier SmithReviewed By: B. Duganiero



CQA FIELD REPORT

Date: 05/16/2022

Client: SCS EngineersReport #: 70Project: North Ranch Landfill Cell E1/Operational InfrastructureJob #: 22-SCS-NRL-01Location: Lea Co, NMPage: 3 of 3

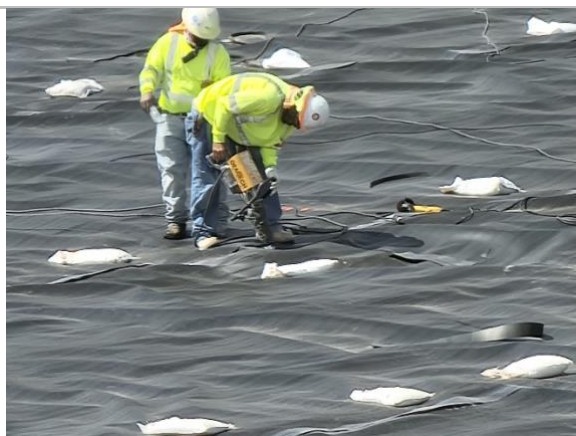
PHOTOGRAPHIC RECORD



Filename: 20220516_150044
Construction crew using a forklift to assist with building the forms



Filename: 20220516_150052
Construction crew adjusting rebar to build the forms in the east drying pad



Filename: 20220516_150110
Installation crew extrusion welding a repair in the floor of Cell E1



Filename: 20220516_150007
Welder cleaning the overlap for welding on the floor near the east slope



Filename: 20220516_150020
Installation crew cleaning overlap area in the center of the floor for welding



Filename: 20220516_150026
Welder maintaining the position of the wedge in the center of the floor.

Prepared By: Xavier SmithReviewed By: B. Duganiero



CQA FIELD REPORT

Date: 05/17/2022

Client: SCS EngineersReport #: 71Project: North Ranch Landfill Cell E1/Operational InfrastructureJob #: 22-SCS-NRL-01Location: Lea Co, NMPage: 1 of 3CQA Personnel: Xavier SmithDay: MondayHours On-Site: 0730-1615Temperature: 60's to 100'sClient Rep.: Travis ClarkCloud Cover: SunnyOwner's Rep.: -Precipitation: N/AVisitors On-Site: NoneWind: 5-32 mph

WORK PERFORMED – COMMENTS – OBSERVATIONS

CQA rep on site at 0730

Cell E1

- Extrusion welding was used to weld repairs in Cell E1 on the floor from the center of the floor to the toe of the east slope.
- All repairs were vacuum boxed, and no issues were discussed in the extrusion welding.
- 13 destructive samples were marked on previously deployed material. All samples passed field testing and were shipped for lab testing.
- Geocomposite was placed onto the east slope of Cell E1 deploying northbound. The geonet within the panels were zip tied together, followed by the geotextile component being stitched together.

Leachate Pond

- 1 dozer was used to spread material from within the leachate pond to the southern berm. A water truck was used to spread moisture throughout, followed by a compactor to compact the lift.
- 1 test was taken within the southern berm of the leachate pond. The test was within the acceptable range for Proctor and OMC, and passed.

Drying Pads

- Construction crew arrived, beginning to make forms in the east drying pad building steel rebar pillars

No other activities required CQA observation. CQA departed from site at 1615.

Prepared By: Xavier SmithReviewed By: B. Duganiero



CQA FIELD REPORT

Date: 05/17/2022

Client: SCS EngineersReport #: 71Project: North Ranch Landfill Cell E1/Operational InfrastructureJob #: 22-SCS-NRL-01Location: Lea Co, NMPage: 2 of 3

CONTRACTOR INFORMATION

Contractor: T-5

Supervisor: C. B.

Contractor:

Supervisor

Equipment on Site:

(3) Volvo articulating haul trucks, (3) Excavators, (2) CAT D6K Dozer, (2) John Deere Tractors, (2) CAT 725 Water Truck, (2) CAT CP56B Compactor, (1) CAT 140M Blade, (2) CAT CS56 Smooth Drum, (3) Fusion Wedges, (2) Extrusion Guns, (2) Skidsteers.

PROBLEM IDENTIFICATION & CORRECTIVE MEASURES

2 panels had to be dealt with due to having horizontal cross-seams on the slope of Cell E1. P16 had a panel extrusion welded over it with a 45-degree cross seam. P124 was removed and replaced with a panel with a 45-degree cross seam in it.

Prepared By: Xavier SmithReviewed By: B. Duganiero



CQA FIELD REPORT

Date:
05/17/2022Client: SCS EngineersReport #: 71Project: North Ranch Landfill Cell E1/Operational InfrastructureJob #: 22-SCS-NRL-01Location: Lea Co, NMPage: 3 of 3

PHOTOGRAPHIC RECORD



Filename: 20220517_122955
Construction crew working on rebar forms in the east drying pad



Filename: 20220517_161158
Excavator backfilling the anchor trench on the north slope of Cell E1



Filename: 20220517_161309
Installation crew stitching geocomposite together on the floor of Cell E1



Filename: 20220517_112201
Installation crew leistering the repair panel over P16



Filename: 20220517_113312
Installation crew extrusion welding replacement panel over P16



Filename: 20220517_113316
Installation crew gridding overlap of the replacement panel and P16

Prepared By: Xavier SmithReviewed By: B. Duganiero



CQA FIELD REPORT

Date: 05/18/2022

Client: SCS EngineersReport #: 71Project: North Ranch Landfill Cell E1/Operational InfrastructureJob #: 22-SCS-NRL-01Location: Lea Co, NMPage: 1 of 3CQA Personnel: Xavier SmithDay: WednesdayHours On-Site: 0700-1713Temperature: 60's to 100'sClient Rep.: Travis ClarkCloud Cover: SunnyOwner's Rep.: -Precipitation: N/AVisitors On-Site: NoneWind: 0-21 mph

WORK PERFORMED – COMMENTS – OBSERVATIONS

CQA rep on site at 0700

Cell E1

- Geocomposite was placed onto the east slope of Cell E1 deploying northbound. The geonet within the panels were ziptied together, followed by the geotextile component being stitched together.

Leachate Pond

- 1 dozer was used to excavate an anchor trench in the berm of the leachate pond

Drying Pads

- Construction crew arrived, beginning to make forms and molds in the east drying pad building steel rebar pillars

Truck Wash

- A dozer was used to spread drainage material throughout the truck wash.

No other activities required CQA observation. CQA departed from site at 1713.

Prepared By: Xavier SmithReviewed By: B. Duganiero



CQA FIELD REPORT

Date: 05/18/2022

Client: SCS EngineersReport #: 71Project: North Ranch Landfill Cell E1/Operational InfrastructureJob #: 22-SCS-NRL-01Location: Lea Co, NMPage: 2 of 3

CONTRACTOR INFORMATION

Contractor: T-5

Supervisor: C. B.

Contractor:

Supervisor

Equipment on Site:

(3) Volvo articulating haul trucks, (3) Excavators, (2) CAT D6K Dozer, (2) John Deere Tractors, (2) CAT 725 Water Truck, (2) CAT CP56B Compactor, (1) CAT 140M Blade, (2) CAT CS56 Smooth Drum, (3) Fusion Wedges, (2) Extrusion Guns, (2) Skidsteers.

PROBLEM IDENTIFICATION & CORRECTIVE MEASURES

2 tracking destructs failed, the areas that failed were marked, to be dealt with the following day.

Prepared By: Xavier SmithReviewed By: B. Duganiero



CQA FIELD REPORT

Date: 05/18/2022

Client: SCS EngineersReport #: 71Project: North Ranch Landfill Cell E1/Operational InfrastructureJob #: 22-SCS-NRL-01Location: Lea Co, NMPage: 3 of 3

PHOTOGRAPHIC RECORD



Filename: 20220518_074135
Excavator digging the anchor trench in the leachate pond berm



Filename: 20220518_110626
Dozer spreading drainage material in the truck wash



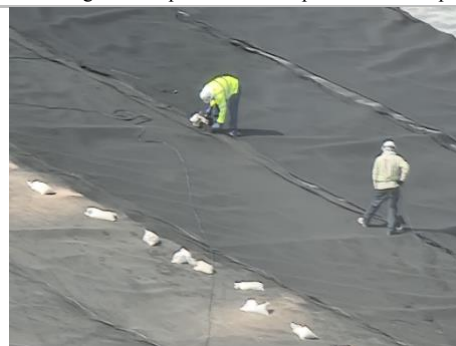
Filename: 20220518_110631
Construction crew preparing rebar forms in the east drying pad



Filename: 20220518_131941
ATV moving to the top of the east slope to move composite.



Filename: 20220518_154750
Composite being deployed in the northeast corner of Cell E1



Filename: 20220518_154757
Installation crew stitching together composite on the north slope of Cell E1

Prepared By: Xavier SmithReviewed By: B. Duganiero



CQA FIELD REPORT

Date: 05/19/2022

Client: SCS EngineersReport #: 72Project: North Ranch Landfill Cell E1/Operational InfrastructureJob #: 22-SCS-NRL-01Location: Lea Co, NMPage: 1 of 3CQA Personnel: Xavier SmithDay: ThursdayHours On-Site: 0658-1701Temperature: 60's to 100'sClient Rep.: Travis ClarkCloud Cover: SunnyOwner's Rep.: -Precipitation: N/AVisitors On-Site: Michael BradfordWind: 0-31 mph

WORK PERFORMED – COMMENTS – OBSERVATIONS

CQA rep on site at 0658

Cell E1

- Geocomposite was placed onto the floor of Cell E1 deploying eastbound. The geonet within the panels were ziptied together, followed by the geotextile component being stitched together.
- The seams containing the failed destructs were all capped using extrusion welding. The welding was then tested via vacuum box.
- 1 destruct was taken from the extrusion welding of this day, as per discussion with Bradford.
- At the western corner of Cell E1, PC was placed in order to transport and spread PC material further within Cell E1. 1 dozer was used to spread the material.

Drying Pads

- Construction crew arrived, beginning to make forms in the east drying pad building steel rebar pillars

No other activities required CQA observation. CQA departed from site at 1701.

Prepared By: Xavier SmithReviewed By: B. Duganiero



CQA FIELD REPORT

Date: 05/19/2022

Client: SCS EngineersReport #: 72Project: North Ranch Landfill Cell E1/Operational InfrastructureJob #: 22-SCS-NRL-01Location: Lea Co, NMPage: 2 of 3

CONTRACTOR INFORMATION

Contractor: T-5

Supervisor: C. B.

Contractor:

Supervisor

Equipment on Site:

(3) Volvo articulating haul trucks, (3) Excavators, (2) CAT D6K Dozer, (2) John Deere Tractors, (2) CAT 725 Water Truck, (2) CAT CP56B Compactor, (1) CAT 140M Blade, (2) CAT CS56 Smooth Drum, (3) Fusion Wedges, (2) Extrusion Guns, (2) Skidsteers.

PROBLEM IDENTIFICATION & CORRECTIVE MEASURES

Due to void space between the primary liner and 12" pipe, the primary liner was opened to fill the void with PC.

Prepared By: Xavier SmithReviewed By: B. Duganiero



CQA FIELD REPORT

Date:
05/19/2022

Client: SCS Engineers

Report #: 72

Project: North Ranch Landfill Cell E1/Operational Infrastructure

Job #: 22-SCS-NRL-01

Location: Lea Co, NM

Page: 3 of 3

PHOTOGRAPHIC RECORD



Filename: 20220519_074709
Skidsteer moving to the southern limit of Cell E1 to deploy geocomposite



Filename: 20220519_112445
ATV moving geocomposite towards the trench in the floor of Cell E1



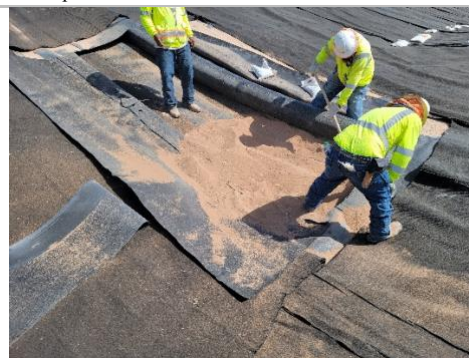
Filename: 20220519_133016
Installation crew welding a cap over the failed seam in Cell E1



Filename: 20220519_133031
Dozer spread PC material at the western corner of Cell E1



Filename: 20220519_133147
Excavator transporting PC onto a haul truck from the stockpile south of Cell E1



Filename: 20220519_155921
Installation crew placing PC within the void spots surrounding the 12" pipe.

Prepared By: Xavier Smith

Reviewed By: B. Duganiero



CQA FIELD REPORT

Date: 05/20/2022

Client: SCS EngineersReport #: 73Project: North Ranch Landfill Cell E1/Operational InfrastructureJob #: 22-SCS-NRL-01Location: Lea Co, NMPage: 1 of 3CQA Personnel: Xavier SmithDay: FridayHours On-Site: 0711-1524Temperature: 60's to 90'sClient Rep.: Travis ClarkCloud Cover: SunnyOwner's Rep.: -Precipitation: N/AVisitors On-Site: NoneWind: 7-36 mph

WORK PERFORMED – COMMENTS – OBSERVATIONS

CQA rep on site at 0711

Cell E1

- At the western corner of Cell E1, PC was transported and spread PC material further within Cell E1. 1 dozer was used to spread the material.
- The repair in the riser trench was welded using extrusion welding and was afterwards tested using vacuum box testing. The geocomposite was then retied with zip ties and stitched back together

Leachate Pond

- GCL was deployed on the southern berm going northbound. Bentonite was placed in the overlap area before adjacent panels were heat bonded together.
- Liner was deployed on the placed GCL. It was fusion welded, starting from the east going westbound.
- All seams were air tested. The pressure for the air test was brought up within the acceptable ranged and maintained for 5 minutes.

Drying Pads

- Construction crew arrived, beginning to make forms and molds in the east drying pad building steel rebar pillars

No other activities required CQA observation. CQA departed from site at 1524.

Prepared By: Xavier SmithReviewed By: B. Duganiero



CQA FIELD REPORT

Date: 05/20/2022

Client: SCS EngineersReport #: 73Project: North Ranch Landfill Cell E1/Operational InfrastructureJob #: 22-SCS-NRL-01Location: Lea Co, NMPage: 2 of 3

CONTRACTOR INFORMATION

Contractor: T-5

Supervisor: C. B.

Contractor:

Supervisor

Equipment on Site:

(3) Volvo articulating haul trucks, (3) Excavators, (2) CAT D6K Dozer, (2) John Deere Tractors, (2) CAT 725 Water Truck, (2) CAT CP56B Compactor, (1) CAT 140M Blade, (2) CAT CS56 Smooth Drum, (3) Fusion Wedges, (2) Extrusion Guns, (2) Skidsteers.

PROBLEM IDENTIFICATION & CORRECTIVE MEASURES

Failed tracking destructs were not tracked, so in the next day, the tracking destructs will be marked.

Prepared By: Xavier SmithReviewed By: B. Duganiero



CQA FIELD REPORT

Date: 05/20/2022

Client: SCS EngineersReport #: 73Project: North Ranch Landfill Cell E1/Operational InfrastructureJob #: 22-SCS-NRL-01Location: Lea Co, NMPage: 3 of 3

PHOTOGRAPHIC RECORD



Filename: 20220520_082417
Repair in the riser trench being cleaned for extrusion welding



Filename: 20220520_084834
Dozer spreading material in the western part of Cell E1



Filename: 20220520_110916
Installation crew welding panels together in the leachate pond



Filename: 20220520_110946
Installation crew setting up the air test within the leachate pond



Filename: 20220520_111140
Construction crew setting up rebar forms in the east drying pad.



Filename: 20220520_110925
Skidsteer being used to deploy geomembrane in the leachate pond

Prepared By: Xavier SmithReviewed By: B. Duganiero



CQA FIELD REPORT

Date: 05/21/2022

Client: SCS EngineersReport #: 74Project: North Ranch Landfill Cell E1/Operational InfrastructureJob #: 22-SCS-NRL-01Location: Lea Co, NMPage: 1 of 3CQA Personnel: Xavier SmithDay: SaturdayHours On-Site: 0657-1138Temperature: 50's to 80'sClient Rep.: Travis ClarkCloud Cover: SunnyOwner's Rep.: -Precipitation: N/AVisitors On-Site: NoneWind: 5-36 mph

WORK PERFORMED – COMMENTS – OBSERVATIONS

CQA rep on site at 0657

Cell E1

- The cap that was placed over the failed seams was opened at either end, revealing the primary fusion seams. Tracking was continued on the failed seams at the ends of the seams within the cap, meeting the requirements for continued tracking for CPDS45.
- After the tracking destructs were taken, repairs were extrusion welded, followed by vacuum box testing before the geocomposite was restored via zip ties and stitching
- At the western corner of Cell E1, PC was placed in order to transport and spread PC material further within Cell E1. 1 dozer was used to spread the material.

Leachate Pond

- Extrusion welding was used to weld repairs in leachate pond on previously deployed material.
- All repairs were vacuum boxed, and no issues were discussed in the extrusion welding.
- 4 destructs were marked, but were not tested in field yet.

Drying Pads

- Concrete crew was onsite, pouring concrete into the east drying pad. The concrete was poured via a concrete mixer with an extended arm, with concrete crews pushing and spreading the material with brooms. It was flattened via people using handheld flat pieces of equipment, as well as a device that cooled the concrete.
- More rebar and steel forms were created in the east drying pad.

No other activities required CQA observation. Work ended early due to high winds dropping visibility. CQA departed from site at 1138.

Prepared By: Xavier SmithReviewed By: B. Duganiero



CQA FIELD REPORT

Date: 05/21/2022

Client: SCS EngineersReport #: 74Project: North Ranch Landfill Cell E1/Operational InfrastructureJob #: 22-SCS-NRL-01Location: Lea Co, NMPage: 2 of 3

CONTRACTOR INFORMATION

Contractor: T-5

Supervisor: C. B.

Contractor:

Supervisor

Equipment on Site:

(3) Volvo articulating haul trucks, (3) Excavators, (2) CAT D6K Dozer, (2) John Deere Tractors, (2) CAT 725 Water Truck, (2) CAT CP56B Compactor, (1) CAT 140M Blade, (2) CAT CS56 Smooth Drum, (3) Fusion Wedges, (2) Extrusion Guns, (2) Skidsteers.

PROBLEM IDENTIFICATION & CORRECTIVE MEASURES

No problems were observed on this date.

Prepared By: Xavier SmithReviewed By: B. Duganiero



CQA FIELD REPORT

Date:
05/21/2022Client: SCS EngineersReport #: 74Project: North Ranch Landfill Cell E1/Operational InfrastructureJob #: 22-SCS-NRL-01Location: Lea Co, NMPage: 3 of 3

PHOTOGRAPHIC RECORD



Filename: 20220521_075533
Installation crew cleaning repair for tracking destruct in Cell E1



Filename: 20220521_092332
Concrete crew pouring and molding concrete in the east drying pad



Filename: 20220521_092401
Concrete crew using device to cool concrete in the east drying pad



Filename: 20220521_092447
Concrete crew removing sand from concrete



Filename: 20220521_092659
Dozer spreading material in the western part of cell e1



Filename: 20220521_102033
Installation crew placing water near a repair for vacuum box testing

Prepared By: Xavier SmithReviewed By: B. Duganiero



CQA FIELD REPORT

Date: 05/23/2022

Client: SCS EngineersReport #: 75Project: North Ranch Landfill Cell E1/Operational InfrastructureJob #: 22-SCS-NRL-01Location: Lea Co, NMPage: 1 of 3CQA Personnel: Xavier SmithDay: MondayHours On-Site: 0702-1809Temperature: 60's to 80'sClient Rep.: Travis ClarkCloud Cover: Mostly CloudyOwner's Rep.: -Precipitation: N/AVisitors On-Site: NoneWind: 5-36 mph

WORK PERFORMED – COMMENTS – OBSERVATIONS

CQA rep on site at 0702

Cell E1

- Near the center of Cell E1, PC was placed in order to transport and spread PC material further within Cell E1. 1 dozer was used to spread the material.

Leachate Pond

- GCL was deployed on the floor going northbound. Bentonite was placed in the overlap area before adjacent panels were heat bonded together.
- Liner was deployed on the placed GCL. It was fusion welded, starting from the east going westbound.
- All seams were air tested. The pressure for the air test was brought up within the acceptable ranged and maintained for 5 minutes.

Truck Wash

- More rebar and steel forms were created in the truck wash.

No other activities required CQA observation. CQA departed from site at 1809.

Prepared By: Xavier SmithReviewed By: B. Duganiero



CQA FIELD REPORT

Date: 05/23/2022

Client: SCS EngineersReport #: 75Project: North Ranch Landfill Cell E1/Operational InfrastructureJob #: 22-SCS-NRL-01Location: Lea Co, NMPage: 2 of 3

CONTRACTOR INFORMATION

Contractor: T-5

Supervisor: C. B.

Contractor:

Supervisor

Equipment on Site:

(3) Volvo articulating haul trucks, (3) Excavators, (2) CAT D6K Dozer, (2) John Deere Tractors, (2) CAT 725 Water Truck, (2) CAT CP56B Compactor, (1) CAT 140M Blade, (2) CAT CS56 Smooth Drum, (3) Fusion Wedges, (2) Extrusion Guns, (2) Skidsteers.

PROBLEM IDENTIFICATION & CORRECTIVE MEASURES

No problems were observed on this date.

Prepared By: Xavier SmithReviewed By: B. Duganiero



CQA FIELD REPORT

Date:
05/23/2022Client: SCS EngineersReport #: 75Project: North Ranch Landfill Cell E1/Operational InfrastructureJob #: 22-SCS-NRL-01Location: Lea Co, NMPage: 3 of 3

PHOTOGRAPHIC RECORD



Filename: 20220523_080140
Construction crew preparing more forms for the truckwash



Filename: 20220523_083824
Installation crew spreading gcl on the floor of the leachate pond



Filename: 20220523_142030
Installation crew deploying geomembrane on the floor of the leachate pond



Filename: 20220523_142238
Installation crew preparing geomembrane overlap for welding



Filename: 20220523_142243
Installation crew fusion welding geomembrane overlap together



Filename: 20220523_173722
Dozer spreading material in Cell E1

Prepared By: Xavier SmithReviewed By: B. Duganiero



CQA FIELD REPORT

Date: 05/24/2022

Client: SCS EngineersReport #: 76Project: North Ranch Landfill Cell E1/Operational InfrastructureJob #: 22-SCS-NRL-01Location: Lea Co, NMPage: 1 of 3CQA Personnel: Xavier SmithDay: TuesdayHours On-Site: 0702-1809Temperature: 50's to 70'sClient Rep.: Travis ClarkCloud Cover: CloudyOwner's Rep.: -Precipitation: N/AVisitors On-Site: NoneWind: 9-58 mph

WORK PERFORMED – COMMENTS – OBSERVATIONS

CQA rep on site at 0702

Cell E1

- Near the center of Cell E1, PC was placed in order to transport and spread PC material further within Cell E1. 1 dozer was used to spread the material.

Leachate Pond

- Extrusion welding was used to weld repairs in leachate on the floor from the center of the floor to north slope.
- All repairs were vacuum boxed, and no issues were discussed in the extrusion welding.
- 10 destructive samples were marked on previously deployed material. All samples passed field testing and were shipped for lab testing.
- Geocomposite was placed onto the east slope of Cell E1 deploying northbound. The geonet within the panels were zip tied together, followed by the geotextile component being stitched together.

Truck Wash

- More rebar and steel forms were created in the truck wash.

No other activities required CQA observation. CQA departed from site at 1809.

Prepared By: Xavier SmithReviewed By: B. Duganiero



CQA FIELD REPORT

Date: 05/24/2022

Client: SCS EngineersReport #: 76Project: North Ranch Landfill Cell E1/Operational InfrastructureJob #: 22-SCS-NRL-01Location: Lea Co, NMPage: 2 of 3

CONTRACTOR INFORMATION

Contractor: T-5

Supervisor: C. B.

Contractor:

Supervisor

Equipment on Site:

(3) Volvo articulating haul trucks, (3) Excavators, (2) CAT D6K Dozer, (2) John Deere Tractors, (2) CAT 725 Water Truck, (2) CAT CP56B Compactor, (1) CAT 140M Blade, (2) CAT CS56 Smooth Drum, (3) Fusion Wedges, (2) Extrusion Guns, (2) Skidsteers.

PROBLEM IDENTIFICATION & CORRECTIVE MEASURES

No problems were observed on this date.

Prepared By: Xavier SmithReviewed By: B. Duganiero



CQA FIELD REPORT

Date:
05/24/2022Client: SCS EngineersReport #: 76Project: North Ranch Landfill Cell E1/Operational InfrastructureJob #: 22-SCS-NRL-01Location: Lea Co, NMPage: 3 of 3

PHOTOGRAPHIC RECORD



Filename: 20220524_080913
Installation crew vacuum box testing a repair in the leachate pond



Filename: 20220524_134519
Dozer spreading material in the floor of Cell E1



Filename: 20220524_143630
Construction crew placing rebar forms vertically in the truck wash



Filename: 20220524_143636
Construction crew preparing wooden form for use in the leachate pond



Filename: 20220524_144808
Installation crew zip tying geocomposite in the leachate pond



Filename: 20220524_144833
Installation crew using sewing machine to stitch geocomposite together in the pond

Prepared By: Xavier SmithReviewed By: B. Duganiero



CQA FIELD REPORT

Date: 05/25/2022

Client: SCS EngineersReport #: 77Project: North Ranch Landfill Cell E1/Operational InfrastructureJob #: 22-SCS-NRL-01Location: Lea Co, NMPage: 1 of 3CQA Personnel: Xavier SmithDay: WednesdayHours On-Site: 0701-1548Temperature: 40's to 70'sClient Rep.: Travis ClarkCloud Cover: SunnyOwner's Rep.: -Precipitation: N/AVisitors On-Site: NoneWind: 3-18 mph

WORK PERFORMED – COMMENTS – OBSERVATIONS

CQA rep on site at 0701

Cell E1

- Near the center of Cell E1, PC was placed in order to transport and spread PC material further within Cell E1. 1 dozer was used to spread the material.
- The 18" and 6" pipes were transported into the sump riser trench and sump.
- The 6" pipe that was pulled in was welded to existing 6" pipe that was previously deployed in the trench of the floor.
- Stone was placed onto the 6" pipe in the very western part of the trench.
- Geomembrane was brought into the sump to be used to create a rub sheet.

Leachate Pond

- Geocomposite was placed onto floor of the leachate pond deploying northbound. The geonet within the panels were zip tied together, followed by the geotextile component being stitched together.

Truck Wash

- More rebar and steel forms were created in the truck wash.

Office

- A water truck spread water out in the area where an office would be placed, followed by a dozer removing excess material and a smooth drum smoothing out the area.

No other activities required CQA observation. CQA departed from site at 1548.

Prepared By: Xavier Smith

Reviewed By: B. Duganiero



CQA FIELD REPORT

Date: 05/25/2022

Client: SCS EngineersReport #: 77Project: North Ranch Landfill Cell E1/Operational InfrastructureJob #: 22-SCS-NRL-01Location: Lea Co, NMPage: 2 of 3

CONTRACTOR INFORMATION

Contractor: T-5

Supervisor: C. B.

Contractor:

Supervisor

Equipment on Site:

(3) Volvo articulating haul trucks, (3) Excavators, (2) CAT D6K Dozer, (2) John Deere Tractors, (2) CAT 725 Water Truck, (2) CAT CP56B Compactor, (1) CAT 140M Blade, (2) CAT CS56 Smooth Drum, (3) Fusion Wedges, (2) Extrusion Guns, (2) Skidsteers.

PROBLEM IDENTIFICATION & CORRECTIVE MEASURES

Due to the elbow of the 18" pipe, the pipe was unable to lay on the floor of the sump, so the bend is to be removed, and replaced with a straight pipe.

Prepared By: Xavier SmithReviewed By: B. Duganiero



CQA FIELD REPORT

Date:
05/25/2022

Client: SCS Engineers

Report #: 77

Project: North Ranch Landfill Cell E1/Operational Infrastructure

Job #: 22-SCS-NRL-01

Location: Lea Co, NM

Page: 3 of 3

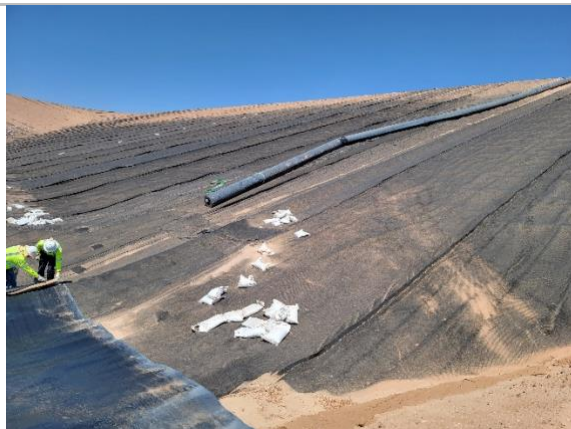
PHOTOGRAPHIC RECORD



Filename: 20220525_094954
Installation crew deploying geocomposite in the leachate pond



Filename: 20220525_095049
Water truck spreading water out in the area of the main office.



Filename: 20220525_143815
18" pipe being transported down the riser trench of Cell E1



Filename: 20220525_152139
Installation crew spreading stone within the floor trench of Cell E1

Prepared By: Xavier Smith

Reviewed By: B. Duganiero



CQA FIELD REPORT

Date: 05/26/2022

Client: SCS EngineersReport #: 78Project: North Ranch Landfill Cell E1/Operational InfrastructureJob #: 22-SCS-NRL-01Location: Lea Co, NMPage: 1 of 3CQA Personnel: Xavier SmithDay: ThursdayHours On-Site: 0658-1717Temperature: 50's to 90'sClient Rep.: Travis ClarkCloud Cover: SunnyOwner's Rep.: -Precipitation: N/AVisitors On-Site: NoneWind: 3-18 mph

WORK PERFORMED – COMMENTS – OBSERVATIONS

CQA rep on site at 0658

Cell E1

- Near the center of Cell E1, PC was placed in order to transport and spread PC material further within Cell E1. 1 dozer was used to spread the material.
- The 18" pipe was cut and had a straight piece welded on in order to lay on the floor of the sump
- The 6" pipe within the floor that was added the previous day had holes made into it per spec requirements
- Stone was placed onto the 6" pipe in the trench and in the southern portion of the sump.
- 4 layers of geomembrane was stacked and welded together to make a rub sheet, placed under the 18" pipe

Leachate Pond

- Liner was deployed on the placed geocomposite. It was fusion welded, starting from the east going westbound.
- All seams were air tested. The pressure for the air test was brought up within the acceptable ranged and maintained for 5 minutes.

No other activities required CQA observation. CQA departed from site at 1717.

Prepared By: Xavier SmithReviewed By: B. Duganiero



CQA FIELD REPORT

Date: 05/26/2022

Client: SCS EngineersReport #: 78Project: North Ranch Landfill Cell E1/Operational InfrastructureJob #: 22-SCS-NRL-01Location: Lea Co, NMPage: 2 of 3

CONTRACTOR INFORMATION

Contractor: T-5

Supervisor: C. B.

Contractor:

Supervisor

Equipment on Site:

(3) Volvo articulating haul trucks, (3) Excavators, (2) CAT D6K Dozer, (2) John Deere Tractors, (2) CAT 725 Water Truck, (2) CAT CP56B Compactor, (1) CAT 140M Blade, (2) CAT CS56 Smooth Drum, (3) Fusion Wedges, (2) Extrusion Guns, (2) Skidsteers.

PROBLEM IDENTIFICATION & CORRECTIVE MEASURES

No issues were observed on this day

Prepared By: Xavier SmithReviewed By: B. Duganiero



CQA FIELD REPORT

Date:
05/26/2022Client: SCS EngineersReport #: 78Project: North Ranch Landfill Cell E1/Operational InfrastructureJob #: 22-SCS-NRL-01Location: Lea Co, NMPage: 3 of 3

PHOTOGRAPHIC RECORD



Filename: 20220526_090309
Installation crew welding the rub sheet within the sump of Cell E1



Filename: 20220526_094337
Stone being transported to the sump of Cell E1



Filename: 20220526_094857
Pipe crew installing holes within the 6" pipe



Filename: 20220526_104255
Dozer spreading material near the floor trench of Cell E1



Filename: 20220526_150914
Stone being placed within the floor trench



Filename: 20220526_152459
Pipe crew welding the straight 18" pipe end to the remainder of the 18" pipe

Prepared By: Xavier SmithReviewed By: B. Duganiero



CQA FIELD REPORT

Date: 05/27/2022

Client: SCS EngineersReport #: 79Project: North Ranch Landfill Cell E1/Operational InfrastructureJob #: 22-SCS-NRL-01Location: Lea Co, NMPage: 1 of 3CQA Personnel: Xavier SmithDay: FridayHours On-Site: 0709-1641Temperature: 50's to 100'sClient Rep.: Travis ClarkCloud Cover: SunnyOwner's Rep.: -Precipitation: N/AVisitors On-Site: NoneWind: 5-31 mph

WORK PERFORMED – COMMENTS – OBSERVATIONS

CQA rep on site at 0709

Cell E1

- In the northern section of Cell E1, PC was placed in order to transport and spread PC material further within Cell E1. 1 dozer was used to spread the material.
- Stone was placed onto the 6" pipe in the trench and in the sump.
- After 2' of stone was placed into the sump, the 6" pipe was moved into the sump, where additional stone could be placed.
- The 6" pipe and stone within the floor trench was wrapped with textile, with the overlap being heat bonded together. Afterwards, a single layer of stone was placed over the overlap across the entirety of the floor trench.

Leachate Pond

- Liner was deployed on the placed geocomposite. It was fusion welded, starting from the east going westbound.
- All seams were air tested. The pressure for the air test was brought up within the acceptable range and maintained for 5 minutes.
- A 12" pipe was transported to the leachate pond, where it was placed into the floor the sump, going up slope. 2' of stone was placed in the sump afterwards, followed by geotextile that was heat bonded to existing geocomposite.

Office

- Two portions of a building were delivered onsite, moved into the area previously prepared. The two portions were moved adjacent to each other in order for the building to be put together

No other activities required CQA observation. CQA departed from site at 1641.

Prepared By: Xavier SmithReviewed By: B. Duganiero



CQA FIELD REPORT

Date: 05/27/2022

Client: SCS EngineersReport #: 79Project: North Ranch Landfill Cell E1/Operational InfrastructureJob #: 22-SCS-NRL-01Location: Lea Co, NMPage: 2 of 3

CONTRACTOR INFORMATION

Contractor: T-5

Supervisor: C. B.

Contractor:

Supervisor

Equipment on Site:

(3) Volvo articulating haul trucks, (3) Excavators, (2) CAT D6K Dozer, (2) John Deere Tractors, (2) CAT 725 Water Truck, (2) CAT CP56B Compactor, (1) CAT 140M Blade, (2) CAT CS56 Smooth Drum, (3) Fusion Wedges, (2) Extrusion Guns, (2) Skidsteers.

PROBLEM IDENTIFICATION & CORRECTIVE MEASURES

No issues were observed on this day

Prepared By: Xavier SmithReviewed By: B. Duganiero



CQA FIELD REPORT

Date:
05/27/2022Client: SCS EngineersReport #: 79Project: North Ranch Landfill Cell E1/Operational InfrastructureJob #: 22-SCS-NRL-01Location: Lea Co, NMPage: 3 of 3

PHOTOGRAPHIC RECORD



Filename: 20220527_082115
Installation crew fusion welding primary liner in the leachate pond



Filename: 20220527_082119
Installation crew deploying primary liner in the leachate pond



Filename: 20220527_090909
6" pipe being removed from the sump in order for the 2' of stone to be placed.



Filename: 20220527_112653
Two portions of a building being moved together in the office area



Filename: 20220527_113628
The 12" pipe being pulled into the sump of the leachate pond



Filename: 20220527_145015
The 6" pipe being placed on top of the 2' of stone.

Prepared By: Xavier SmithReviewed By: B. Duganiero



CQA FIELD REPORT

Date: 05/28/2022

Client: SCS EngineersReport #: 80Project: North Ranch Landfill Cell E1/Operational InfrastructureJob #: 22-SCS-NRL-01Location: Lea Co, NMPage: 1 of 3CQA Personnel: Xavier SmithDay: SaturdayHours On-Site: 0715-1310Temperature: 50's to 100'sClient Rep.: Travis ClarkCloud Cover: SunnyOwner's Rep.: -Precipitation: N/AVisitors On-Site: NoneWind: 5-31 mph

WORK PERFORMED – COMMENTS – OBSERVATIONS

CQA rep on site at 0715

Cell E1

- In the northern section of Cell E1, PC was placed in order to transport and spread PC material further within Cell E1. 1 dozer was used to spread the material.

Leachate Pond

- Extrusion welding was used to weld repairs in the leachate pond on the floor and on the slopes of the berms
- All repairs were vacuum boxed, and no issues were discussed in the extrusion welding.
- Holes were cut through the primary and secondary liner for air vents near the top of the slope, with a cover placed over it and welded on 3 sides
- 15 destructs were cut this date. They passed field testing, and were shipped out

No other activities required CQA observation. CQA departed from site at 1310.

Prepared By: Xavier SmithReviewed By: B. Duganiero



CQA FIELD REPORT

Date: 05/28/2022

Client: SCS EngineersReport #: 80Project: North Ranch Landfill Cell E1/Operational InfrastructureJob #: 22-SCS-NRL-01Location: Lea Co, NMPage: 2 of 3

CONTRACTOR INFORMATION

Contractor: T-5

Supervisor: C. B.

Contractor:

Supervisor

Equipment on Site:

(3) Volvo articulating haul trucks, (3) Excavators, (2) CAT D6K Dozer, (2) John Deere Tractors, (2) CAT 725 Water Truck, (2) CAT CP56B Compactor, (1) CAT 140M Blade, (2) CAT CS56 Smooth Drum, (3) Fusion Wedges, (2) Extrusion Guns, (2) Skidsteers.

PROBLEM IDENTIFICATION & CORRECTIVE MEASURES

No issues were observed on this day

Prepared By: Xavier SmithReviewed By: B. Duganiero



CQA FIELD REPORT

Date:
05/28/2022Client: SCS EngineersReport #: 80Project: North Ranch Landfill Cell E1/Operational InfrastructureJob #: 22-SCS-NRL-01Location: Lea Co, NMPage: 3 of 3

PHOTOGRAPHIC RECORD



Filename: 20220528_085924
Installation crew cleaning overlap for extrusion welding



Filename: 20220528_085935
Welder extrusion welding a repair on the floor of the leachate pond



Filename: 20220528_091422
Installation crew preparing cover of air vent for welding



Filename: 20220528_091623
Hole cutting through primary and secondary liner to the GCL for the air vent



Filename: 20220528_100751
Installation crew doing vacuum box testing on the repairs in the leachate pond



Filename: 20220528_120344
Cover fully welded over an air vent hole on the slope of the leachate pond

Prepared By: Xavier SmithReviewed By: B. Duganiero



CQA FIELD REPORT

Date: 05/30/2022

Client: SCS EngineersReport #: 81Project: North Ranch Landfill Cell E1/Operational InfrastructureJob #: 22-SCS-NRL-01Location: Lea Co, NMPage: 1 of 2CQA Personnel: Xavier SmithDay: MondayHours On-Site: 0656-0828Temperature: 60's to 90'sClient Rep.: Travis ClarkCloud Cover: SunnyOwner's Rep.: -Precipitation: N/AVisitors On-Site: NoneWind: 6-33 mph

WORK PERFORMED – COMMENTS – OBSERVATIONS

CQA rep on site at 0656

Cell E1

- In the northern section of Cell E1, PC was placed in order to transport and spread PC material further within Cell E1. 1 dozer was used to spread the material.

Leachate Pond

- A walk thru was done in the leachate pond.

No other activities required CQA observation. CQA departed from site at 0828

Prepared By: Xavier SmithReviewed By: B. Duganiero



CQA FIELD REPORT

Date: 05/30/2022

Client: SCS EngineersReport #: 81Project: North Ranch Landfill Cell E1/Operational InfrastructureJob #: 22-SCS-NRL-01Location: Lea Co, NMPage: 2 of 2

CONTRACTOR INFORMATION

Contractor: T-5

Supervisor: C. B.

Contractor:

Supervisor

Equipment on Site:

(3) Volvo articulating haul trucks, (3) Excavators, (2) CAT D6K Dozer, (2) John Deere Tractors, (2) CAT 725 Water Truck, (2) CAT CP56B Compactor, (1) CAT 140M Blade, (2) CAT CS56 Smooth Drum, (3) Fusion Wedges, (2) Extrusion Guns, (2) Skidsteers.

PROBLEM IDENTIFICATION & CORRECTIVE MEASURES

No issues were observed on this day

Prepared By: Xavier SmithReviewed By: B. Duganiero



CQA FIELD REPORT

Date: 05/31/2022

Client: SCS EngineersReport #: 82Project: North Ranch Landfill Cell E1/Operational InfrastructureJob #: 22-SCS-NRL-01Location: Lea Co, NMPage: 1 of 3CQA Personnel: Xavier SmithDay: TuesdayHours On-Site: 0704-1400Temperature: 70's to 90'sClient Rep.: Travis ClarkCloud Cover: SunnyOwner's Rep.: -Precipitation: N/AVisitors On-Site: NoneWind: 5-32 mph

WORK PERFORMED – COMMENTS – OBSERVATIONS

CQA rep on site at 0656

Cell E1

- In the northern section of Cell E1, PC was placed in order to transport and spread PC material further within Cell E1. 1 dozer was used to spread the material onto the north and east slopes of the cell.
- A haul truck was used to spread material over the top of the slope berm of the cell.

No other activities required CQA observation.

Prepared By: Xavier SmithReviewed By: B. Duganiero



CQA FIELD REPORT

Date: 05/31/2022

Client: SCS EngineersReport #: 82Project: North Ranch Landfill Cell E1/Operational InfrastructureJob #: 22-SCS-NRL-01Location: Lea Co, NMPage: 2 of 3

CONTRACTOR INFORMATION

Contractor: T-5

Supervisor: C. B.

Contractor:

Supervisor

Equipment on Site:

(3) Volvo articulating haul trucks, (3) Excavators, (2) CAT D6K Dozer, (2) John Deere Tractors, (2) CAT 725 Water Truck, (2) CAT CP56B Compactor, (1) CAT 140M Blade, (2) CAT CS56 Smooth Drum, (3) Fusion Wedges, (2) Extrusion Guns, (2) Skidsteers.

PROBLEM IDENTIFICATION & CORRECTIVE MEASURES

No issues were observed on this day

Prepared By: Xavier SmithReviewed By: B. Duganiero



CQA FIELD REPORT

Date:
05/31/2022

Client: SCS Engineers

Report #: 82

Project: North Ranch Landfill Cell E1/Operational Infrastructure

Job #: 22-SCS-NRL-01

Location: Lea Co, NM

Page: 3 of 3

PHOTOGRAPHIC RECORD



Filename: 20220531_132229
Haul truck transporting material to the northern section of Cell E1



Filename: 20220531_132237
Dozer spreading material up the northeast corner of Cell E1

Prepared By: Xavier Smith

Reviewed By: B. Duganiero



CQA FIELD REPORT

Date: 06/01/2022

Client: SCS EngineersReport #: 83Project: North Ranch Landfill Cell E1/Operational InfrastructureJob #: 22-SCS-NRL-01Location: Lea Co, NMPage: 1 of 3CQA Personnel: Xavier SmithDay: TuesdayHours On-Site: 0712-1544Temperature: 60's to 80'sClient Rep.: Travis ClarkCloud Cover: Mostly Cloudy to CloudyOwner's Rep.: -Precipitation: N/AVisitors On-Site: NoneWind: 5-38 mph

WORK PERFORMED – COMMENTS – OBSERVATIONS

CQA rep on site at 0712

Cell E1

- In the northern section of Cell E1, PC was placed in order to transport and spread PC material further within Cell E1. 1 dozer was used to spread the material onto the north and east slopes of the cell.
- A haul truck was used to spread material over the top of the slope berm of the cell.

Drying Pads

- The eastern edge of the drying pads were excavated of PC material to reveal the polylock and liner system previously installed.
- Excess material was removed from the liner system of the west drying pad in order to make edge of liner smooth against the polylock for welding, as well as excess concrete was removed prior to welding.
- The secondary and primary liners of the west drying pad was extrusion welded to the polylock.

No other activities required CQA observation. CQA departed from site at 1544

Prepared By: Xavier SmithReviewed By: B. Duganiero



CQA FIELD REPORT

Date: 06/01/2022

Client: SCS EngineersReport #: 82Project: North Ranch Landfill Cell E1/Operational InfrastructureJob #: 22-SCS-NRL-01Location: Lea Co, NMPage: 2 of 3

CONTRACTOR INFORMATION

Contractor: T-5

Supervisor: C. B.

Contractor:

Supervisor

Equipment on Site:

(3) Volvo articulating haul trucks, (3) Excavators, (2) CAT D6K Dozer, (2) John Deere Tractors, (2) CAT 725 Water Truck, (2) CAT CP56B Compactor, (1) CAT 140M Blade, (2) CAT CS56 Smooth Drum, (3) Fusion Wedges, (2) Extrusion Guns, (2) Skidsteers.

PROBLEM IDENTIFICATION & CORRECTIVE MEASURES

No issues were observed on this day

Prepared By: Xavier SmithReviewed By: B. Duganiero



CQA FIELD REPORT

Date:
06/01/2022

Client: SCS Engineers

Report #: 83

Project: North Ranch Landfill Cell E1/Operational Infrastructure

Job #: 22-SCS-NRL-01

Location: Lea Co, NM

Page: 3 of 3

PHOTOGRAPHIC RECORD



Filename: 20220601_073622
PC material being removed from the eastern edge to reveal polylock



Filename: 20220601_083145
Installation crew removing excess PC material to reveal liner systems



Filename: 20220601_102645
Excess concrete material that was removed from the west drying pad.



Filename: 20220601_101342
Installation crew lifting up primary liner system to be welded to the polylock

Prepared By: Xavier Smith

Reviewed By: B. Duganiero



CQA FIELD REPORT

Date: 06/02/2022

Client: SCS EngineersReport #: 84Project: North Ranch Landfill Cell E1/Operational InfrastructureJob #: 22-SCS-NRL-01Location: Lea Co, NMPage: 1 of 3CQA Personnel: Xavier SmithDay: ThursdayHours On-Site: 0655-1641Temperature: 60's to 80'sClient Rep.: Travis ClarkCloud Cover: CloudyOwner's Rep.: -Precipitation: N/AVisitors On-Site: NoneWind: 1-21 mph

WORK PERFORMED – COMMENTS – OBSERVATIONS

CQA rep on site at 0655

Cell E1

- In the western section of Cell E1, material was placed to create the ramp into the cell. 1 dozer was used to spread the material brought by haul trucks, with a water truck spreading water, and a compactor and smooth drum compacting the material.
- Density tests were taken in the area. All tests were within the acceptable range of Proctor and OMC and passed.
- Additional rock for the cell sump arrived onsite, stockpiled south of the cell ramp.

Drying Pads

- The eastern edge of the drying pads were excavated of PC material to reveal the polylock and liner system previously installed.
- Excess material was removed from the liner system of the west drying pad in order to make edge of liner smooth against the polylock for welding, as well as excess concrete was removed prior to welding.
- The secondary liner of the east drying pad was extrusion welded to the polylock.
- Boots were installed on the pipes of both drying pads

Leachate Pond

- Sandbags were brought to the leachate pond in preparation for building sand pillows to ballast the pond.
- A dozer was used to cut and spread excess material on the top of berm for building the anchor trench, followed by a smooth drum compacting it.
- Density tests were taken in the anchor trench, at 100 ft increments. All tests were within Proctor range and passed.

Caliche Road

- West of the drying pads, material was placed on the Caliche Road 1 dozer was used to spread the material brought by haul trucks, with a water truck spreading water, and a compactor and smooth drum compacting the material.

No other activities required CQA observation. CQA departed from site at 1641

Prepared By: Xavier SmithReviewed By: B. Duganiero



CQA FIELD REPORT

Date: 06/02/2022

Client: SCS EngineersReport #: 84Project: North Ranch Landfill Cell E1/Operational InfrastructureJob #: 22-SCS-NRL-01Location: Lea Co, NMPage: 2 of 3

CONTRACTOR INFORMATION

Contractor: T-5

Supervisor: C. B.

Contractor:

Supervisor

Equipment on Site:

(3) Volvo articulating haul trucks, (3) Excavators, (2) CAT D6K Dozer, (2) John Deere Tractors, (2) CAT 725 Water Truck, (2) CAT CP56B Compactor, (1) CAT 140M Blade, (2) CAT CS56 Smooth Drum, (3) Fusion Wedges, (2) Extrusion Guns, (2) Skidsteers.

PROBLEM IDENTIFICATION & CORRECTIVE MEASURES

No issues were observed on this day

Prepared By: Xavier SmithReviewed By: B. Duganiero



CQA FIELD REPORT

Date: 06/02/2022

Client: SCS Engineers

Report #: 84

Project: North Ranch Landfill Cell E1/Operational Infrastructure

Job #: 22-SCS-NRL-01

Location: Lea Co, NM

Page: 3 of 3

PHOTOGRAPHIC RECORD



Filename: 20220602_085447
Dozer spreading excess material into the anchor trench of the leachate pond



Filename: 20220602_122552
Density testing a lift in the center of the cell ramp



Filename: 20220602_132928
Smooth drum compacting material at the top of the cell ramp



Filename: 20220602_134543
Rock for the sump being placed south of the cell ramp



Filename: 20220602_144603
Boot installed on the east drying pad



Filename: 20220602_144609
Haul truck spreading material on the Caliche Road west of the drying pads

Prepared By: Xavier Smith

Reviewed By: B. Duganiero



CQA FIELD REPORT

Date: 06/03/2022

Client: SCS EngineersReport #: 85Project: North Ranch Landfill Cell E1/Operational InfrastructureJob #: 22-SCS-NRL-01Location: Lea Co, NMPage: 1 of 3CQA Personnel: Xavier SmithDay: FridayHours On-Site: 0712-1401Temperature: 50's to 80'sClient Rep.: Travis ClarkCloud Cover: CloudyOwner's Rep.: -Precipitation: N/AVisitors On-Site: NoneWind: 6-23 mph

WORK PERFORMED – COMMENTS – OBSERVATIONS

CQA rep on site at 0712

Cell E1

- Excavation of the ditch surrounding the cell berm has started, removing excess material that was placed during construction of the berms. 1 excavator was used to transport material onto haul trucks while 1 dozer was used to cut excess material.

Leachate Pond

- Sand pillows were created in the leachate pond using 60 mil HDPE and sandbags. 5 sandbags were placed in a row on a sheet of geomembrane, followed by the membrane being folded over the sandbags and welded to itself. These were placed on the toe of slope of every panel.

No other activities required CQA observation. CQA departed from site at 1401

Prepared By: Xavier SmithReviewed By: B. Duganiero



CQA FIELD REPORT

Date: 06/03/2022

Client: SCS EngineersReport #: 85Project: North Ranch Landfill Cell E1/Operational InfrastructureJob #: 22-SCS-NRL-01Location: Lea Co, NMPage: 2 of 3

CONTRACTOR INFORMATION

Contractor: T-5

Supervisor: C. B.

Contractor:

Supervisor

Equipment on Site:

(3) Volvo articulating haul trucks, (3) Excavators, (2) CAT D6K Dozer, (2) John Deere Tractors, (2) CAT 725 Water Truck, (2) CAT CP56B Compactor, (1) CAT 140M Blade, (2) CAT CS56 Smooth Drum, (3) Fusion Wedges, (2) Extrusion Guns, (2) Skidsteers.

PROBLEM IDENTIFICATION & CORRECTIVE MEASURES

No issues were observed on this day

Prepared By: Xavier SmithReviewed By: B. Duganiero



CQA FIELD REPORT

Date:
06/03/2022

Client: SCS Engineers

Report #: 85

Project: North Ranch Landfill Cell E1/Operational Infrastructure

Job #: 22-SCS-NRL-01

Location: Lea Co, NM

Page: 3 of 3

PHOTOGRAPHIC RECORD



Filename: 20220603_072704
Installation crew leistering geomembrane to itself for sand pillow



Filename: 20220603_073036
Installation crew extrusion welding sand pillow in leachate pond



Filename: 20220603_073443
Installation crew placing sandbags on geomembrane for creating sand pillow



Filename: 20220603_074432
Installation crew transporting sandbags to the leachate pond for the sand pillows.

Prepared By: Xavier Smith

Reviewed By: B. Duganiero



CQA FIELD REPORT

Date: 06/04/2022

Client: SCS EngineersReport #: 86Project: North Ranch Landfill Cell E1/Operational InfrastructureJob #: 22-SCS-NRL-01Location: Lea Co, NMPage: 1 of 2CQA Personnel: Xavier SmithDay: SaturdayHours On-Site: 0700-0730Temperature: 50's to 90'sClient Rep.: Travis ClarkCloud Cover: SunnyOwner's Rep.: -Precipitation: N/AVisitors On-Site: NoneWind: 0-29 mph

WORK PERFORMED – COMMENTS – OBSERVATIONS

CQA rep on site at 0700

Cell E1

- Excavation of the ditch surrounding the cell berm has started, removing excess material that was placed during construction of the berms. 1 excavator was used to transport material onto haul trucks while 1 dozer was used to cut excess material.

No other activities required CQA observation. CQA departed from site at 0730

Prepared By: Xavier SmithReviewed By: B. Duganiero



CQA FIELD REPORT

Date: 06/04/2022

Client: SCS EngineersReport #: 86Project: North Ranch Landfill Cell E1/Operational InfrastructureJob #: 22-SCS-NRL-01Location: Lea Co, NMPage: 2 of 2

CONTRACTOR INFORMATION

Contractor: T-5

Supervisor: C. B.

Contractor:

Supervisor

Equipment on Site:

(3) Volvo articulating haul trucks, (3) Excavators, (2) CAT D6K Dozer, (2) John Deere Tractors, (2) CAT 725 Water Truck, (2) CAT CP56B Compactor, (1) CAT 140M Blade, (2) CAT CS56 Smooth Drum, (3) Fusion Wedges, (2) Extrusion Guns, (2) Skidsteers.

PROBLEM IDENTIFICATION & CORRECTIVE MEASURES

No issues were observed on this day

Prepared By: Xavier SmithReviewed By: B. Duganiero



CQA FIELD REPORT

Date: 06/06/2022

Client: SCS EngineersReport #: 87Project: North Ranch Landfill Cell E1/Operational InfrastructureJob #: 22-SCS-NRL-01Location: Lea Co, NMPage: 1 of 3CQA Personnel: Xavier SmithDay: MondayHours On-Site: 0658-1614Temperature: 60's to 100'sClient Rep.: Travis ClarkCloud Cover: SunnyOwner's Rep.: -Precipitation: N/AVisitors On-Site: NoneWind: 0-29 mph

WORK PERFORMED – COMMENTS – OBSERVATIONS

CQA rep on site at 0658

Cell E1

- Excavation of the ditch surrounding the cell berm has started, removing excess material that was placed during construction of the berms. 1 excavator was used to transport material onto haul trucks while 1 dozer was used to cut excess material.

Caliche Road

- In the Caliche Road section west of the west drying pad, material was placed. 2 dozers were used to spread the material brought by haul trucks, with a water truck spreading water, and a compactor and smooth drum compacting the material.
- Density tests were taken in the area. All tests were within the acceptable range of Proctor and OMC, and passed.

No other activities required CQA observation. CQA departed from site at 1614

Prepared By: Xavier SmithReviewed By: B. Duganiero



CQA FIELD REPORT

Date: 06/06/2022

Client: SCS EngineersReport #: 87Project: North Ranch Landfill Cell E1/Operational InfrastructureJob #: 22-SCS-NRL-01Location: Lea Co, NMPage: 2 of 3

CONTRACTOR INFORMATION

Contractor: T-5

Supervisor: C. B.

Contractor:

Supervisor

Equipment on Site:

(3) Volvo articulating haul trucks, (3) Excavators, (2) CAT D6K Dozer, (2) John Deere Tractors, (2) CAT 725 Water Truck, (2) CAT CP56B Compactor, (1) CAT 140M Blade, (2) CAT CS56 Smooth Drum, (3) Fusion Wedges, (2) Extrusion Guns, (2) Skidsteers.

PROBLEM IDENTIFICATION & CORRECTIVE MEASURES

No issues were observed on this day

Prepared By: Xavier SmithReviewed By: B. Duganiero



CQA FIELD REPORT

Date:
06/06/2022

Client: SCS Engineers

Report #: 87

Project: North Ranch Landfill Cell E1/Operational Infrastructure

Job #: 22-SCS-NRL-01

Location: Lea Co, NM

Page: 3 of 3

PHOTOGRAPHIC RECORD



Filename: 20220606_085824
Excavator removing excess material from the ditch surrounding the Cell Berm

Filename: 20220606_123055
Taking a density test in the Caliche Road west of the west drying pad



Filename: 20220606_123057
Smooth drum preparing to compact Caliche Road

Filename: 20220606_123101
Dozers spreading material on the Caliche Road

Prepared By: Xavier Smith

Reviewed By: B. Duganiero

District I
1625 N. French Dr., Hobbs, NM 88240
Phone:(575) 393-6161 Fax:(575) 393-0720
District II
811 S. First St., Artesia, NM 88210
Phone:(575) 748-1283 Fax:(575) 748-9720
District III
1000 Rio Brazos Rd., Aztec, NM 87410
Phone:(505) 334-6178 Fax:(505) 334-6170
District IV
1220 S. St Francis Dr., Santa Fe, NM 87505
Phone:(505) 476-3470 Fax:(505) 476-3462

State of New Mexico
Energy, Minerals and Natural Resources
Oil Conservation Division
1220 S. St Francis Dr.
Santa Fe, NM 87505

CONDITIONS

Action 137599

CONDITIONS

| | |
|---|---|
| Operator: NGL Waste Services, LLC 1008 Southview Circle Center, TX 75935 | OGRID: 329268 |
| | Action Number: 137599 |
| | Action Type: [C-137] Non-Fee SWMF Submittal (SWMF NON-FEE SUBMITTAL) |

CONDITIONS

| Created By | Condition | Condition Date |
|------------|-----------|----------------|
| bjones | None | 8/24/2022 |