

R. T. HICKS CONSULTANTS, LTD.

901 Rio Grande Blvd NW ▲ Suite F-142 ▲ Albuquerque, NM 87104 ▲ 505.266.5004 ▲ Since 1996

October 10, 2022

Mr. Mike Bratcher
NMOCD - District 2, Supervisor
811 S. First St.
Artesia, NM 88210
Via E-Mail

Ms. Victoria Venegas
NMOCD - District 2
811 S. First St.
Artesia, NM 88210
Via E-Mail

RE: Enchantment Water, LLC, Fed 128 AST Containment
Section 21, T23S, R31E, Eddy County
C-147 Closure Report

Dear Mr. Bratcher and Ms. Venegas:

On behalf of Enchantment Water LLC, R.T. Hicks Consultants submits the above-referenced closure report. Enchantment will upload the document to OCD via the OCD Online portal. In addition to this transmittal letter that summarizes the results of closure sampling, please find attached:

1. The signed C-147 for closure.
2. Our compliance checklist for closure.
3. The description of the sampling protocol. Note we elected to submit all samples to the laboratory rather than hold samples as suggested in the protocol.
4. Table 1 that presents all of the analytical data.
5. Laboratory reports from Cardinal Laboratory.

The table below provides the average concentrations of the 5-point composite sample and the closure criteria of Table 1. There is no evidence of a release from the AST and the sampling program demonstrates compliance with Table 1 criteria for closure.

	Depth ft	Chloride	TPH	BTEX	GRO+DRO
Average	4.25	236.8	43.854	0.29	36.446
Average	0-4	431.6	29.97	0.29	19.98
Average	0-2	195.2	32.552	0.29	20.042
Average	2 to 4	482.8	29.97	0.29	23.226
Table 1 Criteria		20,000	2500	10	1000

Enchantment plans to continue to use the pad that housed the AST. Reclamation of the E&P pad will proceed according to the agreements and policies of the BLM. OCD will be copied on Enchantment's reclamation submissions to the BLM.

In compliance with 19.15.34.10 of the Rule, the original submission was copied to BLM Carlsbad who is the representative of the owner of the surface upon which the containment will be constructed (i.e., the United States).

October 10, 2022

Page 2

If you have any questions or concerns regarding this registration or the attached C-147, please contact me. As always, we appreciate your work ethic and attention to detail

Sincerely,

R.T. Hicks Consultants

A handwritten signature in black ink, appearing to read "Randall H", written in a cursive style.

Randall T. Hicks PG

Principal

Copy: Enchantment Water LLC c/o Caliber Land
BLM

District I
1625 N. French Dr., Hobbs, NM 88240
District II
811 S. First St., Artesia, NM 88210
District III
1000 Rio Brazos Road, Aztec, NM 87410
District IV
1220 S. St. Francis Dr., Santa Fe, NM 87505

State of New Mexico
Energy Minerals and Natural Resources
Department
Oil Conservation Division
1220 South St. Francis Dr.
Santa Fe, NM 87505

Form C-147
Revised April 3, 2017

Recycling Facility and/or Recycling Containment

Type of Facility: ☐ Recycling Facility ☒ Recycling Containment*
Type of action: ☐ Permit ☐ Registration
☐ Modification ☐ Extension
☒ Closure ☐ Other (explain) _____

* At the time C-147 is submitted to the division for a Recycling Containment, a copy shall be provided to the surface owner.

Be advised that approval of this request does not relieve the operator of liability should operations result in pollution of surface water, ground water or the environment. Nor does approval relieve the operator of its responsibility to comply with any other applicable governmental authority's rules, regulations or ordinances.

1.

Operator: : Enchantment Water, LLC OGRID #: 329620
Address: 1250 S. Capital of Texas hwy, Ste 1-270, Austin, Tx 78746
Facility or well name (include API# if associated with a well): FED 128 AST (STORAGE)
OCD Permit Number: 2RG-169 (For new facilities the permit number will be assigned by the district office)
U/L or Qtr/Qtr Containments 1 & 2 O Section 21 Township 23S Range 31E County: Eddy
Surface Owner: ☒ Federal ☐ State ☐ Private ☐ Tribal Trust or Indian Allotment

2.

☒ **Recycling Facility:**
Location of (if applicable): Latitude 32.28179 Longitude -103.7805691 NAD83 (Approximate)
Proposed Use: ☒ Drilling* ☒ Completion* ☒ Production* ☒ Plugging *
**The re-use of produced water may NOT be used until freshwater zones are cased and cemented.*
☐ Other, *requires permit for other uses. Describe use, process, testing, volume of produced water and ensure there will be no adverse impact on groundwater or surface water.*
☒ Fluid Storage
☒ Above ground tanks ☐ Recycling containment ☐ Activity permitted under 19.15.17 NMAC explain type _____
☐ Activity permitted under 19.15.36 NMAC explain type: _____ ☐ Other explain _____
☐ For multiple or additional recycling containments, attach design and location information of each containment
☐ **Closure Report (required within 60 days of closure completion):** ☐ Recycling Facility Closure Completion Date: _____

3.

☒ **Recycling Containment:**
☐ Annual Extension after initial 5 years (attach summary of monthly leak detection inspections for previous year)
Center of Recycling **See Attachment (adjacent):** (if applicable) Latitude 32.2836555 Longitude -103.7803083 NAD83 (Approximate)
☒ For multiple or additional recycling containments, attach design and location information of each containment:
☒ Lined ☐ Liner type: Thickness **See Attachment:** ☐ HDPE ☒ LLDPE ☐ HDPE ☐ PVC ☐ Other
Primary liner SEE DESIGN DRAWINGS ; Secondary liner SEE DESIGN DRAWINGS ☐ String-Reinforced
Liner Seams: ☒ Welded ☐ Factory ☐ Other ☐ Volume: SEE DESIGN DRAWINGS bbl Dimensions: (Inside dimensions) SEE DESIGN
☐ Recycling Containment Closure Completion Date: _____

4.

Bonding:

- ☐ Covered under bonding pursuant to 19.15.8 NMAC per 19.15.34.15(A)(2) NMAC **(These containments are limited to only the wells owned or operated by the owners of the containment.)**
- ☒ Bonding in accordance with 19.15.34.15(A)(1). Amount of bond \$ See Attached Cost Estimate **(work on these facilities cannot commence until bonding amounts are approved)**
- ☒ Attach closure cost estimate and documentation on how the closure cost was calculated.

5. **Fencing:**

- ☒ Four foot height, four strands of barbed wire evenly spaced between one and four feet
- ☐ Alternate. Please specify _____

6. **Signs:**

- ☐ 12"x 24", 2" lettering, providing Operator's name, site location, and emergency telephone numbers
- ☒ Signed in compliance with 19.15.16.8 NMAC

7. **Variances:**

Justifications and/or demonstrations that the proposed variance will afford reasonable protection against contamination of fresh water, human health, and the environment.

Check the below box only if a variance is requested:

☒ Variance(s): Requests must be submitted to the appropriate division district for consideration of approval. If a Variance is requested, include the variance information on a separate page and attach it to the C-147 as part of the application.

If a Variance is requested, it must be approved prior to implementation. See Volume 2

8. **Siting Criteria for Recycling Containment**

Instructions: The applicant must provide attachments that demonstrate compliance for each siting criteria below as part of the application. Potential examples of the siting attachment source material are provided below under each criteria

General siting**Ground water is less than 50 feet below the bottom of the Recycling Containment.**

NM Office of the State Engineer - iWATERS database search; USGS; Data obtained from nearby wells

☐ Yes ☒ No
☐ NA

Within incorporated municipal boundaries or within a defined municipal fresh water well field covered under a municipal ordinance adopted pursuant to NMSA 1978, Section 3-27-3, as amended.

☐ Yes ☒ No
☐ NA

- Written confirmation or verification from the municipality; written approval obtained from the municipality

Within the area overlying a subsurface mine.

☐ Yes ☒ No

- Written confirmation or verification or map from the NM EMNRD-Mining and Minerals Division

Within an unstable area.

☐ Yes ☒ No

- Engineering measures incorporated into the design; NM Bureau of Geology & Mineral Resources; USGS; NM Geological Society; topographic map

Within a 100-year floodplain. FEMA map

☐ Yes ☒ No

Within 300 feet of a continuously flowing watercourse, or 200 feet of any other significant watercourse, or lakebed, sinkhole, or playa lake (measured from the ordinary high-water mark).

☐ Yes ☒ No

- Topographic map; visual inspection (certification) of the proposed site

Within 1000 feet from a permanent residence, school, hospital, institution, or church in existence at the time of initial application.

☐ Yes ☒ No

- Visual inspection (certification) of the proposed site; aerial photo; satellite image

Within 500 horizontal feet of a spring or a fresh water well used for domestic or stock watering purposes, in existence at the time of initial application.

☐ Yes ☒ No

- NM Office of the State Engineer - iWATERS database search; visual inspection (certification) of the proposed site

Within 500 feet of a wetland.

☐ Yes ☒ No

- US Fish and Wildlife Wetland Identification map; topographic map; visual inspection (certification) of the proposed site

9.

Recycling Facility and/or Containment Checklist:

Instructions: Each of the following items must be attached to the application. Indicate, by a check mark in the box, that the documents are attached.

- ☒ Design Plan - based upon the appropriate requirements.
- ☒ Operating and Maintenance Plan - based upon the appropriate requirements.
- ☒ Closure Plan - based upon the appropriate requirements.
- ☒ Site Specific Groundwater Data -
- ☒ Siting Criteria Compliance Demonstrations -
- ☒ **Certify that notice of the C-147 (only) has been sent to the surface owner(s)**

10.

Operator Application Certification:

I hereby certify that the information and attachments submitted with this application are true, accurate and complete to the best of my knowledge and belief.

Name (Print): Peter Mercure Title: Chief Operating Officer

Signature:  Date: 9/19/2022

e-mail address peter@water.energy Telephone: 432-242-2021

11.

OCD Representative Signature: Victoria Venegas Approval Date: 10/12/2022

Title: Environmental Specialist OCD Permit Number: 2RF-169

- ☒ OCD Conditions
- ☒ Additional OCD Conditions on Attachment

Compliance Checklist

19.15.34.14 CLOSURE AND SITE RECLAMATION REQUIREMENTS FOR RECYCLING CONTAINMENTS:

A. Once the operator has ceased operations, the operator shall remove all fluids within 60 days and close the containment within six months from the date the operator ceases operations from the containment for use. The division district office may grant an extension for the removal of all fluids not to exceed two months. The division district office may grant an extension to close the containment not to exceed six months. If the operator wants to use the containment for a purpose other than recycling then the operator must have that use approved or permitted by the division in accordance with the appropriate rules.

B. The operator shall close a recycling containment by first removing all fluids, contents and synthetic liners and transferring these materials to a division approved facility.

C. The operator shall test the soils beneath the containment for contamination with a five-point composite sample which includes stained or wet soils, if any, and that sample shall be analyzed for the constituents listed in Table I below.

(1) If any contaminant concentration is higher than the parameters listed in Table I, the division may require additional delineation upon review of the results and the operator must receive approval before proceeding with closure.

(2) If all contaminant concentrations are less than or equal to the parameters listed in Table I, then the operator can proceed to backfill with non-waste containing, uncontaminated, earthen material.

D. Within 60 days of closure completion, the operator shall submit a closure report on form C-147, including required attachments, to document all closure activities including sampling results and the details on any backfilling, capping or covering, where applicable. The closure report shall certify that all information in the report and attachments is correct and that the operator has complied with all applicable closure requirements and conditions specified in division rules or directives.

Enchantment moved the Fed 128 AST from the location to the Mills Ranch Containment Facility. Thus, they complied with Section A and B

Transmittal letter and attachment provide evidence of compliance with Section C

E. Once the operator has closed the recycling containment, the operator shall reclaim the containment's location to a safe and stable condition that blends with the surrounding undisturbed area. Topsoils and subsoils shall be replaced to their original relative positions and contoured so as to achieve erosion control, long-term stability and preservation of surface water flow patterns. The disturbed area shall then be reseeded in the first favorable growing season following closure of a recycling containment. The operator shall substantially restore the impacted surface area to the condition that existed prior to the construction of the recycling containment.

While the Fed 128 AST is closed, the pad upon which it stood will be employed by Enchantment for continued E&P operations as allowed by the existing agreement with BLM.

F. Reclamation of all disturbed areas no longer in use shall be considered complete when all ground surface disturbing activities at the site have been completed, and a uniform vegetative cover has been established that reflects a life-form ratio of plus or minus fifty percent (50%) of pre-disturbance levels and a total percent plant cover of at least seventy percent (70%) of pre-disturbance levels, excluding noxious weeds.

Enchantment will copy the NMOCD on reclamation submissions to the BLM to comply with Sections F, G and H

G. The re-vegetation and reclamation obligations imposed by federal, state trust land or tribal agencies on lands managed by those agencies shall supersede these provisions and govern the obligations of any operator subject to those provisions, provided that the other requirements provide equal or better protection of fresh water, human health and the environment.

H. The operator shall notify the division when reclamation and re-vegetation are complete.

R. T. HICKS CONSULTANTS, LTD.

901 Rio Grande Blvd NW ▲ Suite F-142 ▲ Albuquerque, NM 87104 ▲ 505.266.5004 ▲ Since 1996

Closure Sampling Fed 128 AST

- Flex Services is responsible as the excavator to ensure clearance from the NM811 “one-call” service for underground facilities location before any excavation begins.
- RT Hicks Consultants is responsible for the collection, storage, integrity, and transport of all of the samples.

PROCEDURE

The following procedure will be followed to collect samples using an auger mounted on a skid-steer, bobcat or equivalent:

1. Advance drill to 4 ft BGS and slowly remove auger from hole. Hicks Consultants will collect representative soil sample from stem of auger drill from
 - a. 0-4 ft depth interval
 - b. 0-2 foot depth
 - c. 2-4 foot depth.
2. Clean out boring and then return clean auger to the hole. Advance auger to approximately 4.3 ft BGS and slowly remove stem from hole. Hicks Consultants will collect soil sample from this interval.
3. Backfill hole with remaining cuttings using a shovel.
4. Repeat at each sample point marked by an “X” on the enclosed maps or as directed by Hicks Consultants on site.

SAMPLE MANAGEMENT

Obtain coolers and sample vials, etc. from Cardinal Labs in Hobbs.

Chain of Custody #1 should list only the following samples

- 5 samples of the depth interval 0-4 feet - 1 for each boring
- 5 samples of the 4.25 depth - 1 from each boring
- All 10 samples should be analyzed for Chloride, BTEX and GRO/DRO/MRO

Chain of Custody #2 should be for the second group of samples that will be “HELD FOR POSSIBLE ANALYSIS” and will include

- 5 samples of the depth interval 0-2 feet - one from each boring and
- 5 samples of the depth interval 2-4 feet - one from each boring
- All 10 samples should be analyzed for chloride only

Deliver samples on ice to Cardinal Labs in Hobbs.

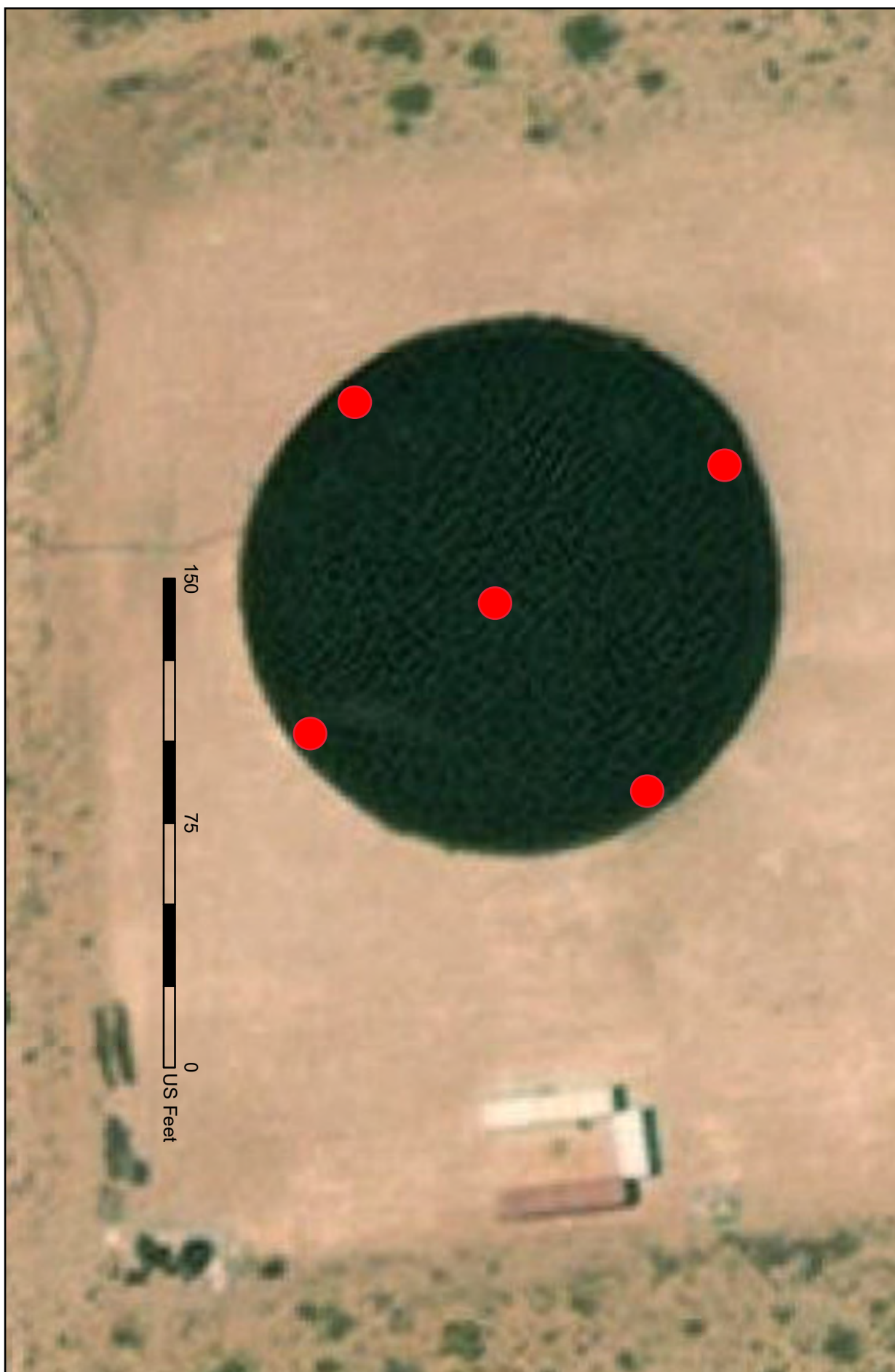
Health & Safety Plan

Directions to location – As shown below, site is on north side of 128 between Red Road and Twin Wells Road.



Image below shows how to get to the site from 128 – entrance northwest of location





Borings should lie within the AST footprint, which should be relatively obvious on the pad. 4 of the borings should be close to the wall of the AST, as shown, because most seepage would originate where the liner is folded at the base. One sample from the middle of the AST footprint as shown is fine. Locations are approximate.

If the footprint of the AST is not obvious, you can use the scaled drawing to identify the approximate sample locations. For example, the SW sample is about 75 feet east of the western edge of the pad as shown in this photo and about 90 feet from the southern edge of the pad.

Table 1 - Summary of Analyses

Sample	date_cld	matrix	discDepth_fbg	topDepth_fbg	botDepth_fbg	Chloride	GRO_ppm	DRO_ppm	MRO	benzene_ppm	BTEX_ppm	TPH (GRO+DRO+MRP)	GRO+DRO
W1	8/15/2022	soil	4.25	2	4	400	9.99	9.99	9.99	0.49	0.29	29.97	19.98
C5	8/31/2022	soil	4.25			192	9.99	76.4	9.99	0.49	0.29	29.97	86.39
E3	8/23/2022	soil	4.25			192	9.99	9.99	9.99	0.49	0.29	96.38	19.98
E4	8/27/2022	soil	4.25			48	9.99	13	9.99	0.49	0.29	29.97	22.99
W2	8/19/2022	soil	4.25			352	9.99	22.9	9.99	0.49	0.29	32.98	32.89
C5	8/28/2022	soil		0	2	96	9.99	9.99	9.99	0.49	0.29	42.88	19.98
E3	8/20/2022	soil		0	2	368	9.99	9.99	9.99	0.49	0.29	29.97	19.98
E4	8/24/2022	soil		0	2	64	9.99	10.3	9.99	0.49	0.29	29.97	20.29
W1	8/12/2022	soil		0	2	352	9.99	9.99	9.99	0.49	0.29	29.97	19.98
W2	8/16/2022	soil		0	2	96	9.99	9.99	9.99	0.49	0.29	29.97	19.98
C5	8/29/2022	soil		0	4	144	9.99	9.99	9.99	0.49	0.29	29.97	19.98
E3	8/21/2022	soil		0	4	624	9.99	9.99	9.99	0.49	0.29	29.97	19.98
E4	8/25/2022	soil		0	4	64	9.99	9.99	9.99	0.49	0.29	29.97	19.98
W1	8/13/2022	soil		0	4	1230	9.99	9.99	9.99	0.49	0.29	29.97	19.98
W2	8/17/2022	soil		0	4	96	9.99	9.99	9.99	0.49	0.29	29.97	19.98
C5	8/30/2022	soil		2	4	160	9.99	9.99	9.99	0.49	0.29	29.97	19.98
E3	8/22/2022	soil		2	4	944	9.99	9.99	9.99	0.49	0.29	29.97	19.98
E4	8/26/2022	soil		2	4	64	9.99	9.99	9.99	0.49	0.29	29.97	19.98
W1	8/14/2022	soil		2	4	1200	9.99	9.99	9.99	0.49	0.29	29.97	19.98
W2	8/18/2022	soil		2	4	46	9.99	9.99	9.99	0.49	0.29	29.97	19.98



PHONE (575) 393-2326 ° 101 E. MARLAND ° HOBBS, NM 88240

August 18, 2022

RANDALL HICKS

R T HICKS CONSULTANTS

901 RIO GRANDE BLVD SUITE F-142

ALBUQUERQUE, NM 87104

RE: FED 128 AST

Enclosed are the results of analyses for samples received by the laboratory on 08/12/22 16:11.

Cardinal Laboratories is accredited through Texas NELAP under certificate number T104704398-22-15. Accreditation applies to drinking water, non-potable water and solid and chemical materials. All accredited analytes are denoted by an asterisk (*). For a complete list of accredited analytes and matrices visit the TCEQ website at www.tceq.texas.gov/field/ga/lab_accred_certif.html.

Cardinal Laboratories is accredited through the State of Colorado Department of Public Health and Environment for:

Method EPA 552.2	Haloacetic Acids (HAA-5)
Method EPA 524.2	Total Trihalomethanes (TTHM)
Method EPA 524.4	Regulated VOCs (V1, V2, V3)

Accreditation applies to public drinking water matrices.

This report meets NELAP requirements and is made up of a cover page, analytical results, and a copy of the original chain-of-custody. If you have any questions concerning this report, please feel free to contact me.

Sincerely,

A handwritten signature in black ink that reads "Coley D. Keene".

Celey D. Keene

Lab Director/Quality Manager



PHONE (575) 393-2326 • 101 E. MARLAND • HOBBS, NM 88240

Analytical Results For:

R T HICKS CONSULTANTS
 RANDALL HICKS
 901 RIO GRANDE BLVD SUITE F-142
 ALBUQUERQUE NM, 87104
 Fax To: NONE

Received: 08/12/2022
 Reported: 08/18/2022
 Project Name: FED 128 AST
 Project Number: NOT GIVEN
 Project Location: NM

Sampling Date: 08/12/2022
 Sampling Type: Soil
 Sampling Condition: Cool & Intact
 Sample Received By: Shalyn Rodriguez

Sample ID: W 1 - 0-2' (H223698-01)

BTEX 8021B		mg/kg		Analyzed By: JH						
Analyte	Result	Reporting Limit	Analyzed	Method Blank	BS	% Recovery	True Value QC	RPD	Qualifier	
Benzene*	<0.050	0.050	08/16/2022	ND	2.05	103	2.00	3.70		
Toluene*	<0.050	0.050	08/16/2022	ND	2.00	99.8	2.00	3.76		
Ethylbenzene*	<0.050	0.050	08/16/2022	ND	1.94	96.8	2.00	4.45		
Total Xylenes*	<0.150	0.150	08/16/2022	ND	5.94	99.0	6.00	4.80		
Total BTEX	<0.300	0.300	08/16/2022	ND						

Surrogate: 4-Bromofluorobenzene (PIE) 101 % 69.9-140

Chloride, SM4500CI-B		mg/kg		Analyzed By: GM						
Analyte	Result	Reporting Limit	Analyzed	Method Blank	BS	% Recovery	True Value QC	RPD	Qualifier	
Chloride	352	16.0	08/17/2022	ND	432	108	400	7.69		

TPH 8015M		mg/kg		Analyzed By: MS					
Analyte	Result	Reporting Limit	Analyzed	Method Blank	BS	% Recovery	True Value QC	RPD	Qualifier
GRO C6-C10*	<10.0	10.0	08/16/2022	ND	202	101	200	10.5	
DRO >C10-C28*	<10.0	10.0	08/16/2022	ND	224	112	200	11.7	
EXT DRO >C28-C36	<10.0	10.0	08/16/2022	ND					

Surrogate: 1-Chlorooctane 86.2 % 43-149

Surrogate: 1-Chlorooctadecane 89.1 % 42.5-161

Cardinal Laboratories

*=Accredited Analyte

PLEASE NOTE: Liability and Damages. Cardinal's liability and client's exclusive remedy for any claim arising, whether based in contract or tort, shall be limited to the amount paid by client for analyses. All claims, including those for negligence and any other cause whatsoever shall be deemed waived unless made in writing and received by Cardinal within thirty (30) days after completion of the applicable service. In no event shall Cardinal be liable for incidental or consequential damages, including, without limitation, business interruptions, loss of use, or loss of profits incurred by client, its subsidiaries, affiliates or successors arising out of or related to the performance of the services hereunder by Cardinal, regardless of whether such claim is based upon any of the above stated reasons or otherwise. Results relate only to the samples identified above. This report shall not be reproduced except in full with written approval of Cardinal Laboratories.

Celey D. Keene, Lab Director/Quality Manager



PHONE (575) 393-2326 • 101 E. MARLAND • HOBBS, NM 88240

Analytical Results For:

R T HICKS CONSULTANTS
 RANDALL HICKS
 901 RIO GRANDE BLVD SUITE F-142
 ALBUQUERQUE NM, 87104
 Fax To: NONE

Received: 08/12/2022
 Reported: 08/18/2022
 Project Name: FED 128 AST
 Project Number: NOT GIVEN
 Project Location: NM

Sampling Date: 08/12/2022
 Sampling Type: Soil
 Sampling Condition: Cool & Intact
 Sample Received By: Shalyn Rodriguez

Sample ID: W 1 - 0-4' (H223698-02)

BTEX 8021B			mg/kg		Analyzed By: JH					
Analyte	Result	Reporting Limit	Analyzed	Method Blank	BS	% Recovery	True Value QC	RPD	Qualifier	
Benzene*	<0.050	0.050	08/16/2022	ND	2.05	103	2.00	3.70		
Toluene*	<0.050	0.050	08/16/2022	ND	2.00	99.8	2.00	3.76		
Ethylbenzene*	<0.050	0.050	08/16/2022	ND	1.94	96.8	2.00	4.45		
Total Xylenes*	<0.150	0.150	08/16/2022	ND	5.94	99.0	6.00	4.80		
Total BTEX	<0.300	0.300	08/16/2022	ND						

Surrogate: 4-Bromofluorobenzene (PIE) 101 % 69.9-140

Chloride, SM4500Cl-B		mg/kg		Analyzed By: GM					
Analyte	Result	Reporting Limit	Analyzed	Method Blank	BS	% Recovery	True Value QC	RPD	Qualifier
Chloride	1230	16.0	08/17/2022	ND	432	108	400	7.69	
TPH 8015M		mg/kg		Analyzed By: MS					

TPH 8015M		mg/kg		Analyzed By: MS					
Analyte	Result	Reporting Limit	Analyzed	Method Blank	BS	% Recovery	True Value QC	RPD	Qualifier
GRO C6-C10*	<10.0	10.0	08/16/2022	ND	202	101	200	10.5	
DRO >C10-C28*	<10.0	10.0	08/16/2022	ND	224	112	200	11.7	
EXT DRO >C28-C36	<10.0	10.0	08/16/2022	ND					

Surrogate: 1-Chlorooctane 88.0 % 43-149

Surrogate: 1-Chlorooctadecane 93.6 % 42.5-161

Cardinal Laboratories

*=Accredited Analyte

PLEASE NOTE: Liability and Damages. Cardinal's liability and client's exclusive remedy for any claim arising, whether based in contract or tort, shall be limited to the amount paid by client for analyses. All claims, including those for negligence and any other cause whatsoever shall be deemed waived unless made in writing and received by Cardinal within thirty (30) days after completion of the applicable service. In no event shall Cardinal be liable for incidental or consequential damages, including, without limitation, business interruptions, loss of use, or loss of profits incurred by client, its subsidiaries, affiliates or successors arising out of or related to the performance of the services hereunder by Cardinal, regardless of whether such claim is based upon any of the above stated reasons or otherwise. Results relate only to the samples identified above. This report shall not be reproduced except in full with written approval of Cardinal Laboratories.

Celey D. Keene, Lab Director/Quality Manager



PHONE (575) 393-2326 • 101 E. MARLAND • HOBBS, NM 88240

Analytical Results For:

R T HICKS CONSULTANTS
 RANDALL HICKS
 901 RIO GRANDE BLVD SUITE F-142
 ALBUQUERQUE NM, 87104
 Fax To: NONE

Received: 08/12/2022
 Reported: 08/18/2022
 Project Name: FED 128 AST
 Project Number: NOT GIVEN
 Project Location: NM

Sampling Date: 08/12/2022
 Sampling Type: Soil
 Sampling Condition: Cool & Intact
 Sample Received By: Shalyn Rodriguez

Sample ID: W 1 - 2-4' (H223698-03)

BTEX 8021B			mg/kg		Analyzed By: JH					
Analyte	Result	Reporting Limit	Analyzed	Method Blank	BS	% Recovery	True Value QC	RPD	Qualifier	
Benzene*	<0.050	0.050	08/16/2022	ND	2.05	103	2.00	3.70		
Toluene*	<0.050	0.050	08/16/2022	ND	2.00	99.8	2.00	3.76		
Ethylbenzene*	<0.050	0.050	08/16/2022	ND	1.94	96.8	2.00	4.45		
Total Xylenes*	<0.150	0.150	08/16/2022	ND	5.94	99.0	6.00	4.80		
Total BTEX	<0.300	0.300	08/16/2022	ND						

Surrogate: 4-Bromofluorobenzene (PIE) 102 % 69.9-140

Chloride, SM4500Cl-B		mg/kg		Analyzed By: GM					
Analyte	Result	Reporting Limit	Analyzed	Method Blank	BS	% Recovery	True Value QC	RPD	Qualifier
Chloride	1200	16.0	08/17/2022	ND	432	108	400	7.69	
TPH 8015M		mg/kg		Analyzed By: MS					

Surrogate: 1-Chlorooctane 90.9 % 43-149

Surrogate: 1-Chlorooctadecane 94.4 % 42.5-161

Cardinal Laboratories

*=Accredited Analyte

PLEASE NOTE: Liability and Damages. Cardinal's liability and client's exclusive remedy for any claim arising, whether based in contract or tort, shall be limited to the amount paid by client for analyses. All claims, including those for negligence and any other cause whatsoever shall be deemed waived unless made in writing and received by Cardinal within thirty (30) days after completion of the applicable service. In no event shall Cardinal be liable for incidental or consequential damages, including, without limitation, business interruptions, loss of use, or loss of profits incurred by client, its subsidiaries, affiliates or successors arising out of or related to the performance of the services hereunder by Cardinal, regardless of whether such claim is based upon any of the above stated reasons or otherwise. Results relate only to the samples identified above. This report shall not be reproduced except in full with written approval of Cardinal Laboratories.

Celey D. Keene, Lab Director/Quality Manager



PHONE (575) 393-2326 • 101 E. MARLAND • HOBBS, NM 88240

Analytical Results For:

R T HICKS CONSULTANTS
 RANDALL HICKS
 901 RIO GRANDE BLVD SUITE F-142
 ALBUQUERQUE NM, 87104
 Fax To: NONE

Received: 08/12/2022
 Reported: 08/18/2022
 Project Name: FED 128 AST
 Project Number: NOT GIVEN
 Project Location: NM

Sampling Date: 08/12/2022
 Sampling Type: Soil
 Sampling Condition: Cool & Intact
 Sample Received By: Shalyn Rodriguez

Sample ID: W 1 - 4.25' (H223698-04)

BTEX 8021B		mg/kg		Analyzed By: JH						
Analyte	Result	Reporting Limit	Analyzed	Method Blank	BS	% Recovery	True Value QC	RPD	Qualifier	
Benzene*	<0.050	0.050	08/16/2022	ND	2.05	103	2.00	3.70		
Toluene*	<0.050	0.050	08/16/2022	ND	2.00	99.8	2.00	3.76		
Ethylbenzene*	<0.050	0.050	08/16/2022	ND	1.94	96.8	2.00	4.45		
Total Xylenes*	<0.150	0.150	08/16/2022	ND	5.94	99.0	6.00	4.80		
Total BTEX	<0.300	0.300	08/16/2022	ND						

Surrogate: 4-Bromofluorobenzene (PIE) 102 % 69.9-140

Chloride, SM4500Cl-B		mg/kg		Analyzed By: GM					
Analyte	Result	Reporting Limit	Analyzed	Method Blank	BS	% Recovery	True Value QC	RPD	Qualifier
Chloride	400	16.0	08/17/2022	ND	432	108	400	7.69	
TPH 8015M		mg/kg		Analyzed By: MS					

Surrogate: 1-Chlorooctane 101 % 43-149

Surrogate: 1-Chlorooctadecane 106 % 42.5-161

Cardinal Laboratories

*=Accredited Analyte

PLEASE NOTE: Liability and Damages. Cardinal's liability and client's exclusive remedy for any claim arising, whether based in contract or tort, shall be limited to the amount paid by client for analyses. All claims, including those for negligence and any other cause whatsoever shall be deemed waived unless made in writing and received by Cardinal within thirty (30) days after completion of the applicable service. In no event shall Cardinal be liable for incidental or consequential damages, including, without limitation, business interruptions, loss of use, or loss of profits incurred by client, its subsidiaries, affiliates or successors arising out of or related to the performance of the services hereunder by Cardinal, regardless of whether such claim is based upon any of the above stated reasons or otherwise. Results relate only to the samples identified above. This report shall not be reproduced except in full with written approval of Cardinal Laboratories.

Celey D. Keene, Lab Director/Quality Manager



PHONE (575) 393-2326 • 101 E. MARLAND • HOBBS, NM 88240

Analytical Results For:

R T HICKS CONSULTANTS
 RANDALL HICKS
 901 RIO GRANDE BLVD SUITE F-142
 ALBUQUERQUE NM, 87104
 Fax To: NONE

Received: 08/12/2022
 Reported: 08/18/2022
 Project Name: FED 128 AST
 Project Number: NOT GIVEN
 Project Location: NM

Sampling Date: 08/12/2022
 Sampling Type: Soil
 Sampling Condition: Cool & Intact
 Sample Received By: Shalyn Rodriguez

Sample ID: W 2 - 0-2' (H223698-05)

BTEX 8021B			mg/kg		Analyzed By: JH					
Analyte	Result	Reporting Limit	Analyzed	Method Blank	BS	% Recovery	True Value QC	RPD	Qualifier	
Benzene*	<0.050	0.050	08/16/2022	ND	2.05	103	2.00	3.70		
Toluene*	<0.050	0.050	08/16/2022	ND	2.00	99.8	2.00	3.76		
Ethylbenzene*	<0.050	0.050	08/16/2022	ND	1.94	96.8	2.00	4.45		
Total Xylenes*	<0.150	0.150	08/16/2022	ND	5.94	99.0	6.00	4.80		
Total BTEX	<0.300	0.300	08/16/2022	ND						

Surrogate: 4-Bromofluorobenzene (PIE) 103 % 69.9-140

Chloride, SM4500Cl-B		mg/kg		Analyzed By: GM					
Analyte	Result	Reporting Limit	Analyzed	Method Blank	BS	% Recovery	True Value QC	RPD	Qualifier
Chloride	96.0	16.0	08/17/2022	ND	432	108	400	7.69	
TPH 8015M		mg/kg		Analyzed By: MS					

Surrogate: 1-Chlorooctane 101 % 43-149

Surrogate: 1-Chlorooctadecane 106 % 42.5-161

Cardinal Laboratories

*=Accredited Analyte

PLEASE NOTE: Liability and Damages. Cardinal's liability and client's exclusive remedy for any claim arising, whether based in contract or tort, shall be limited to the amount paid by client for analyses. All claims, including those for negligence and any other cause whatsoever shall be deemed waived unless made in writing and received by Cardinal within thirty (30) days after completion of the applicable service. In no event shall Cardinal be liable for incidental or consequential damages, including, without limitation, business interruptions, loss of use, or loss of profits incurred by client, its subsidiaries, affiliates or successors arising out of or related to the performance of the services hereunder by Cardinal, regardless of whether such claim is based upon any of the above stated reasons or otherwise. Results relate only to the samples identified above. This report shall not be reproduced except in full with written approval of Cardinal Laboratories.

Celey D. Keene, Lab Director/Quality Manager



PHONE (575) 393-2326 • 101 E. MARLAND • HOBBS, NM 88240

Analytical Results For:

R T HICKS CONSULTANTS
 RANDALL HICKS
 901 RIO GRANDE BLVD SUITE F-142
 ALBUQUERQUE NM, 87104
 Fax To: NONE

Received: 08/12/2022
 Reported: 08/18/2022
 Project Name: FED 128 AST
 Project Number: NOT GIVEN
 Project Location: NM

Sampling Date: 08/12/2022
 Sampling Type: Soil
 Sampling Condition: Cool & Intact
 Sample Received By: Shalyn Rodriguez

Sample ID: W 2 - 0-4' (H223698-06)

BTEX 8021B			mg/kg		Analyzed By: JH					
Analyte	Result	Reporting Limit	Analyzed	Method Blank	BS	% Recovery	True Value QC	RPD	Qualifier	
Benzene*	<0.050	0.050	08/18/2022	ND	2.05	103	2.00	3.70		
Toluene*	<0.050	0.050	08/18/2022	ND	2.00	99.8	2.00	3.76		
Ethylbenzene*	<0.050	0.050	08/18/2022	ND	1.94	96.8	2.00	4.45		
Total Xylenes*	<0.150	0.150	08/18/2022	ND	5.94	99.0	6.00	4.80		
Total BTEX	<0.300	0.300	08/18/2022	ND						

Surrogate: 4-Bromofluorobenzene (PIE) 103 % 69.9-140

Chloride, SM4500Cl-B		mg/kg		Analyzed By: GM					
Analyte	Result	Reporting Limit	Analyzed	Method Blank	BS	% Recovery	True Value QC	RPD	Qualifier
Chloride	96.0	16.0	08/17/2022	ND	432	108	400	7.69	
TPH 8015M		mg/kg		Analyzed By: MS					

Surrogate: 1-Chlorooctane 103 % 43-149

Surrogate: 1-Chlorooctadecane 109 % 42.5-161

Cardinal Laboratories

*=Accredited Analyte

PLEASE NOTE: Liability and Damages. Cardinal's liability and client's exclusive remedy for any claim arising, whether based in contract or tort, shall be limited to the amount paid by client for analyses. All claims, including those for negligence and any other cause whatsoever shall be deemed waived unless made in writing and received by Cardinal within thirty (30) days after completion of the applicable service. In no event shall Cardinal be liable for incidental or consequential damages, including, without limitation, business interruptions, loss of use, or loss of profits incurred by client, its subsidiaries, affiliates or successors arising out of or related to the performance of the services hereunder by Cardinal, regardless of whether such claim is based upon any of the above stated reasons or otherwise. Results relate only to the samples identified above. This report shall not be reproduced except in full with written approval of Cardinal Laboratories.

Celey D. Keene, Lab Director/Quality Manager



PHONE (575) 393-2326 • 101 E. MARLAND • HOBBS, NM 88240

Analytical Results For:

R T HICKS CONSULTANTS
 RANDALL HICKS
 901 RIO GRANDE BLVD SUITE F-142
 ALBUQUERQUE NM, 87104
 Fax To: NONE

Received: 08/12/2022
 Reported: 08/18/2022
 Project Name: FED 128 AST
 Project Number: NOT GIVEN
 Project Location: NM

Sampling Date: 08/12/2022
 Sampling Type: Soil
 Sampling Condition: Cool & Intact
 Sample Received By: Shalyn Rodriguez

Sample ID: W 2 - 2-4' (H223698-07)

BTEX 8021B		mg/kg		Analyzed By: JH						
Analyte	Result	Reporting Limit	Analyzed	Method Blank	BS	% Recovery	True Value QC	RPD	Qualifier	
Benzene*	<0.050	0.050	08/16/2022	ND	2.05	103	2.00	3.70		
Toluene*	<0.050	0.050	08/16/2022	ND	2.00	99.8	2.00	3.76		
Ethylbenzene*	<0.050	0.050	08/16/2022	ND	1.94	96.8	2.00	4.45		
Total Xylenes*	<0.150	0.150	08/16/2022	ND	5.94	99.0	6.00	4.80		
Total BTEX	<0.300	0.300	08/16/2022	ND						

Surrogate: 4-Bromofluorobenzene (PIE) 102 % 69.9-140

Chloride, SM4500Cl-B		mg/kg		Analyzed By: GM					
Analyte	Result	Reporting Limit	Analyzed	Method Blank	BS	% Recovery	True Value QC	RPD	Qualifier
Chloride	48.0	16.0	08/17/2022	ND	432	108	400	7.69	
TPH 8015M		mg/kg		Analyzed By: MS					

TPH 8015M		mg/kg	Analyzed By: MS						
Analyte	Result	Reporting Limit	Analyzed	Method Blank	BS	% Recovery	True Value QC	RPD	Qualifier
GRO C6-C10*	<10.0	10.0	08/16/2022	ND	202	101	200	10.5	
DRO >C10-C28*	<10.0	10.0	08/16/2022	ND	224	112	200	11.7	
EXT DRO >C28-C36	<10.0	10.0	08/16/2022	ND					

Surrogate: 1-Chlorooctane 103 % 43-149

Surrogate: 1-Chlorooctadecane 109 % 42.5-161

Cardinal Laboratories

*=Accredited Analyte

PLEASE NOTE: Liability and Damages. Cardinal's liability and client's exclusive remedy for any claim arising, whether based in contract or tort, shall be limited to the amount paid by client for analyses. All claims, including those for negligence and any other cause whatsoever shall be deemed waived unless made in writing and received by Cardinal within thirty (30) days after completion of the applicable service. In no event shall Cardinal be liable for incidental or consequential damages, including, without limitation, business interruptions, loss of use, or loss of profits incurred by client, its subsidiaries, affiliates or successors arising out of or related to the performance of the services hereunder by Cardinal, regardless of whether such claim is based upon any of the above stated reasons or otherwise. Results relate only to the samples identified above. This report shall not be reproduced except in full with written approval of Cardinal Laboratories.

Celey D. Keene, Lab Director/Quality Manager



PHONE (575) 393-2326 • 101 E. MARLAND • HOBBS, NM 88240

Analytical Results For:

R T HICKS CONSULTANTS
 RANDALL HICKS
 901 RIO GRANDE BLVD SUITE F-142
 ALBUQUERQUE NM, 87104
 Fax To: NONE

Received: 08/12/2022
 Reported: 08/18/2022
 Project Name: FED 128 AST
 Project Number: NOT GIVEN
 Project Location: NM

Sampling Date: 08/12/2022
 Sampling Type: Soil
 Sampling Condition: Cool & Intact
 Sample Received By: Shalyn Rodriguez

Sample ID: W 2 - 4.25' (H223698-08)

BTEX 8021B			mg/kg		Analyzed By: JH					
Analyte	Result	Reporting Limit	Analyzed	Method Blank	BS	% Recovery	True Value QC	RPD	Qualifier	
Benzene*	<0.050	0.050	08/16/2022	ND	2.05	103	2.00	3.70		
Toluene*	<0.050	0.050	08/16/2022	ND	2.00	99.8	2.00	3.76		
Ethylbenzene*	<0.050	0.050	08/16/2022	ND	1.94	96.8	2.00	4.45		
Total Xylenes*	<0.150	0.150	08/16/2022	ND	5.94	99.0	6.00	4.80		
Total BTEX	<0.300	0.300	08/16/2022	ND						

Surrogate: 4-Bromofluorobenzene (PIE) 103 % 69.9-140

Chloride, SM4500Cl-B		mg/kg		Analyzed By: GM					
Analyte	Result	Reporting Limit	Analyzed	Method Blank	BS	% Recovery	True Value QC	RPD	Qualifier
Chloride	352	16.0	08/17/2022	ND	432	108	400	7.69	
TPH 8015M		mg/kg		Analyzed By: MS					

Surrogate: 1-Chlorooctane 96.0 % 43-149

Surrogate: 1-Chlorooctadecane 104 % 42.5-161

Cardinal Laboratories

*=Accredited Analyte

PLEASE NOTE: Liability and Damages. Cardinal's liability and client's exclusive remedy for any claim arising, whether based in contract or tort, shall be limited to the amount paid by client for analyses. All claims, including those for negligence and any other cause whatsoever shall be deemed waived unless made in writing and received by Cardinal within thirty (30) days after completion of the applicable service. In no event shall Cardinal be liable for incidental or consequential damages, including, without limitation, business interruptions, loss of use, or loss of profits incurred by client, its subsidiaries, affiliates or successors arising out of or related to the performance of the services hereunder by Cardinal, regardless of whether such claim is based upon any of the above stated reasons or otherwise. Results relate only to the samples identified above. This report shall not be reproduced except in full with written approval of Cardinal Laboratories.

Celey D. Keene, Lab Director/Quality Manager



PHONE (575) 393-2326 • 101 E. MARLAND • HOBBS, NM 88240

Analytical Results For:

R T HICKS CONSULTANTS
 RANDALL HICKS
 901 RIO GRANDE BLVD SUITE F-142
 ALBUQUERQUE NM, 87104
 Fax To: NONE

Received: 08/12/2022
 Reported: 08/18/2022
 Project Name: FED 128 AST
 Project Number: NOT GIVEN
 Project Location: NM

Sampling Date: 08/12/2022
 Sampling Type: Soil
 Sampling Condition: Cool & Intact
 Sample Received By: Shalyn Rodriguez

Sample ID: E 3 - 0-2' (H223698-09)

BTEX 8021B		mg/kg		Analyzed By: JH						
Analyte	Result	Reporting Limit	Analyzed	Method Blank	BS	% Recovery	True Value QC	RPD	Qualifier	
Benzene*	<0.050	0.050	08/16/2022	ND	2.05	103	2.00	3.70		
Toluene*	<0.050	0.050	08/16/2022	ND	2.00	99.8	2.00	3.76		
Ethylbenzene*	<0.050	0.050	08/16/2022	ND	1.94	96.8	2.00	4.45		
Total Xylenes*	<0.150	0.150	08/16/2022	ND	5.94	99.0	6.00	4.80		
Total BTEX	<0.300	0.300	08/16/2022	ND						

Surrogate: 4-Bromofluorobenzene (PIE) 102 % 69.9-140

Chloride, SM4500Cl-B		mg/kg		Analyzed By: GM					
Analyte	Result	Reporting Limit	Analyzed	Method Blank	BS	% Recovery	True Value QC	RPD	Qualifier
Chloride	368	16.0	08/17/2022	ND	432	108	400	7.69	
TPH 8015M		mg/kg		Analyzed By: MS					

Surrogate: 1-Chlorooctane 105 % 43-149

Surrogate: 1-Chlorooctadecane 110 % 42.5-161

Cardinal Laboratories

*=Accredited Analyte

PLEASE NOTE: Liability and Damages. Cardinal's liability and client's exclusive remedy for any claim arising, whether based in contract or tort, shall be limited to the amount paid by client for analyses. All claims, including those for negligence and any other cause whatsoever shall be deemed waived unless made in writing and received by Cardinal within thirty (30) days after completion of the applicable service. In no event shall Cardinal be liable for incidental or consequential damages, including, without limitation, business interruptions, loss of use, or loss of profits incurred by client, its subsidiaries, affiliates or successors arising out of or related to the performance of the services hereunder by Cardinal, regardless of whether such claim is based upon any of the above stated reasons or otherwise. Results relate only to the samples identified above. This report shall not be reproduced except in full with written approval of Cardinal Laboratories.

Celey D. Keene, Lab Director/Quality Manager



PHONE (575) 393-2326 • 101 E. MARLAND • HOBBS, NM 88240

Analytical Results For:

R T HICKS CONSULTANTS
 RANDALL HICKS
 901 RIO GRANDE BLVD SUITE F-142
 ALBUQUERQUE NM, 87104
 Fax To: NONE

Received: 08/12/2022
 Reported: 08/18/2022
 Project Name: FED 128 AST
 Project Number: NOT GIVEN
 Project Location: NM

Sampling Date: 08/12/2022
 Sampling Type: Soil
 Sampling Condition: Cool & Intact
 Sample Received By: Shalyn Rodriguez

Sample ID: E 3 - 0-4' (H223698-10)

BTEX 8021B		mg/kg		Analyzed By: JH						
Analyte	Result	Reporting Limit	Analyzed	Method Blank	BS	% Recovery	True Value QC	RPD	Qualifier	
Benzene*	<0.050	0.050	08/16/2022	ND	2.05	103	2.00	3.70		
Toluene*	<0.050	0.050	08/16/2022	ND	2.00	99.8	2.00	3.76		
Ethylbenzene*	<0.050	0.050	08/16/2022	ND	1.94	96.8	2.00	4.45		
Total Xylenes*	<0.150	0.150	08/16/2022	ND	5.94	99.0	6.00	4.80		
Total BTEX	<0.300	0.300	08/16/2022	ND						

Surrogate: 4-Bromofluorobenzene (PIE) 102 % 69.9-140

Chloride, SM4500Cl-B		mg/kg		Analyzed By: GM					
Analyte	Result	Reporting Limit	Analyzed	Method Blank	BS	% Recovery	True Value QC	RPD	Qualifier
Chloride	624	16.0	08/17/2022	ND	432	108	400	7.69	
TPH 8015M		mg/kg		Analyzed By: MS					

Surrogate: 1-Chlorooctane 102 % 43-149

Surrogate: 1-Chlorooctadecane 108 % 42.5-161

Cardinal Laboratories

*=Accredited Analyte

PLEASE NOTE: Liability and Damages. Cardinal's liability and client's exclusive remedy for any claim arising, whether based in contract or tort, shall be limited to the amount paid by client for analyses. All claims, including those for negligence and any other cause whatsoever shall be deemed waived unless made in writing and received by Cardinal within thirty (30) days after completion of the applicable service. In no event shall Cardinal be liable for incidental or consequential damages, including, without limitation, business interruptions, loss of use, or loss of profits incurred by client, its subsidiaries, affiliates or successors arising out of or related to the performance of the services hereunder by Cardinal, regardless of whether such claim is based upon any of the above stated reasons or otherwise. Results relate only to the samples identified above. This report shall not be reproduced except in full with written approval of Cardinal Laboratories.

Celey D. Keene, Lab Director/Quality Manager



PHONE (575) 393-2326 • 101 E. MARLAND • HOBBS, NM 88240

Analytical Results For:

R T HICKS CONSULTANTS
 RANDALL HICKS
 901 RIO GRANDE BLVD SUITE F-142
 ALBUQUERQUE NM, 87104
 Fax To: NONE

Received: 08/12/2022
 Reported: 08/18/2022
 Project Name: FED 128 AST
 Project Number: NOT GIVEN
 Project Location: NM

Sampling Date: 08/12/2022
 Sampling Type: Soil
 Sampling Condition: Cool & Intact
 Sample Received By: Shalyn Rodriguez

Sample ID: E 3 - 2-4' (H223698-11)

BTEX 8021B		mg/kg		Analyzed By: JH						
Analyte	Result	Reporting Limit	Analyzed	Method Blank	BS	% Recovery	True Value QC	RPD	Qualifier	
Benzene*	<0.050	0.050	08/16/2022	ND	2.05	103	2.00	3.70		
Toluene*	<0.050	0.050	08/16/2022	ND	2.00	99.8	2.00	3.76		
Ethylbenzene*	<0.050	0.050	08/16/2022	ND	1.94	96.8	2.00	4.45		
Total Xylenes*	<0.150	0.150	08/16/2022	ND	5.94	99.0	6.00	4.80		
Total BTEX	<0.300	0.300	08/16/2022	ND						

Surrogate: 4-Bromofluorobenzene (PIE) 101 % 69.9-140

Chloride, SM4500Cl-B		mg/kg		Analyzed By: GM					
Analyte	Result	Reporting Limit	Analyzed	Method Blank	BS	% Recovery	True Value QC	RPD	Qualifier
Chloride	944	16.0	08/17/2022	ND	432	108	400	7.69	
TPH 8015M		mg/kg		Analyzed By: MS					

Surrogate: 1-Chlorooctane 102 % 43-149

Surrogate: 1-Chlorooctadecane 108 % 42.5-161

Cardinal Laboratories

*=Accredited Analyte

PLEASE NOTE: Liability and Damages. Cardinal's liability and client's exclusive remedy for any claim arising, whether based in contract or tort, shall be limited to the amount paid by client for analyses. All claims, including those for negligence and any other cause whatsoever shall be deemed waived unless made in writing and received by Cardinal within thirty (30) days after completion of the applicable service. In no event shall Cardinal be liable for incidental or consequential damages, including, without limitation, business interruptions, loss of use, or loss of profits incurred by client, its subsidiaries, affiliates or successors arising out of or related to the performance of the services hereunder by Cardinal, regardless of whether such claim is based upon any of the above stated reasons or otherwise. Results relate only to the samples identified above. This report shall not be reproduced except in full with written approval of Cardinal Laboratories.

Celey D. Keene, Lab Director/Quality Manager



PHONE (575) 393-2326 • 101 E. MARLAND • HOBBS, NM 88240

Analytical Results For:

R T HICKS CONSULTANTS
 RANDALL HICKS
 901 RIO GRANDE BLVD SUITE F-142
 ALBUQUERQUE NM, 87104
 Fax To: NONE

Received: 08/12/2022
 Reported: 08/18/2022
 Project Name: FED 128 AST
 Project Number: NOT GIVEN
 Project Location: NM

Sampling Date: 08/12/2022
 Sampling Type: Soil
 Sampling Condition: Cool & Intact
 Sample Received By: Shalyn Rodriguez

Sample ID: E 3 - 4.25' (H223698-12)

BTEX 8021B		mg/kg		Analyzed By: JH						
Analyte	Result	Reporting Limit	Analyzed	Method Blank	BS	% Recovery	True Value QC	RPD	Qualifier	
Benzene*	<0.050	0.050	08/16/2022	ND	2.05	103	2.00	3.70		
Toluene*	<0.050	0.050	08/16/2022	ND	2.00	99.8	2.00	3.76		
Ethylbenzene*	<0.050	0.050	08/16/2022	ND	1.94	96.8	2.00	4.45		
Total Xylenes*	<0.150	0.150	08/16/2022	ND	5.94	99.0	6.00	4.80		
Total BTEX	<0.300	0.300	08/16/2022	ND						

Surrogate: 4-Bromofluorobenzene (PIE) 101 % 69.9-140

Chloride, SM4500Cl-B		mg/kg		Analyzed By: GM					
Analyte	Result	Reporting Limit	Analyzed	Method Blank	BS	% Recovery	True Value QC	RPD	Qualifier
Chloride	192	16.0	08/17/2022	ND	432	108	400	0.00	
TPH 8015M		mg/kg		Analyzed By: MS					

Surrogate: 1-Chlorooctane 86.6 % 43-149

Surrogate: 1-Chlorooctadecane 101 % 42.5-161

Cardinal Laboratories

*=Accredited Analyte

PLEASE NOTE: Liability and Damages. Cardinal's liability and client's exclusive remedy for any claim arising, whether based in contract or tort, shall be limited to the amount paid by client for analyses. All claims, including those for negligence and any other cause whatsoever shall be deemed waived unless made in writing and received by Cardinal within thirty (30) days after completion of the applicable service. In no event shall Cardinal be liable for incidental or consequential damages, including, without limitation, business interruptions, loss of use, or loss of profits incurred by client, its subsidiaries, affiliates or successors arising out of or related to the performance of the services hereunder by Cardinal, regardless of whether such claim is based upon any of the above stated reasons or otherwise. Results relate only to the samples identified above. This report shall not be reproduced except in full with written approval of Cardinal Laboratories.

Celey D. Keene, Lab Director/Quality Manager



PHONE (575) 393-2326 • 101 E. MARLAND • HOBBS, NM 88240

Analytical Results For:

R T HICKS CONSULTANTS
 RANDALL HICKS
 901 RIO GRANDE BLVD SUITE F-142
 ALBUQUERQUE NM, 87104
 Fax To: NONE

Received: 08/12/2022
 Reported: 08/18/2022
 Project Name: FED 128 AST
 Project Number: NOT GIVEN
 Project Location: NM

Sampling Date: 08/12/2022
 Sampling Type: Soil
 Sampling Condition: Cool & Intact
 Sample Received By: Shalyn Rodriguez

Sample ID: E 4 - 0-2' (H223698-13)

BTEX 8021B		mg/kg		Analyzed By: JH						
Analyte	Result	Reporting Limit	Analyzed	Method Blank	BS	% Recovery	True Value QC	RPD	Qualifier	
Benzene*	<0.050	0.050	08/16/2022	ND	2.05	103	2.00	3.70		
Toluene*	<0.050	0.050	08/16/2022	ND	2.00	99.8	2.00	3.76		
Ethylbenzene*	<0.050	0.050	08/16/2022	ND	1.94	96.8	2.00	4.45		
Total Xylenes*	<0.150	0.150	08/16/2022	ND	5.94	99.0	6.00	4.80		
Total BTEX	<0.300	0.300	08/16/2022	ND						

Surrogate: 4-Bromofluorobenzene (PIE) 102 % 69.9-140

Chloride, SM4500Cl-B		mg/kg		Analyzed By: GM					
Analyte	Result	Reporting Limit	Analyzed	Method Blank	BS	% Recovery	True Value QC	RPD	Qualifier
Chloride	64.0	16.0	08/17/2022	ND	432	108	400	0.00	
TPH 8015M		mg/kg		Analyzed By: MS					

Surrogate: 1-Chlorooctane 91.3 % 43-149

Surrogate: 1-Chlorooctadecane 109 % 42.5-161

Cardinal Laboratories

*=Accredited Analyte

PLEASE NOTE: Liability and Damages. Cardinal's liability and client's exclusive remedy for any claim arising, whether based in contract or tort, shall be limited to the amount paid by client for analyses. All claims, including those for negligence and any other cause whatsoever shall be deemed waived unless made in writing and received by Cardinal within thirty (30) days after completion of the applicable service. In no event shall Cardinal be liable for incidental or consequential damages, including, without limitation, business interruptions, loss of use, or loss of profits incurred by client, its subsidiaries, affiliates or successors arising out of or related to the performance of the services hereunder by Cardinal, regardless of whether such claim is based upon any of the above stated reasons or otherwise. Results relate only to the samples identified above. This report shall not be reproduced except in full with written approval of Cardinal Laboratories.

Celey D. Keene, Lab Director/Quality Manager



PHONE (575) 393-2326 • 101 E. MARLAND • HOBBS, NM 88240

Analytical Results For:

R T HICKS CONSULTANTS
 RANDALL HICKS
 901 RIO GRANDE BLVD SUITE F-142
 ALBUQUERQUE NM, 87104
 Fax To: NONE

Received: 08/12/2022
 Reported: 08/18/2022
 Project Name: FED 128 AST
 Project Number: NOT GIVEN
 Project Location: NM

Sampling Date: 08/12/2022
 Sampling Type: Soil
 Sampling Condition: Cool & Intact
 Sample Received By: Shalyn Rodriguez

Sample ID: E 4 - 0-4' (H223698-14)

BTEX 8021B		mg/kg		Analyzed By: JH						
Analyte	Result	Reporting Limit	Analyzed	Method Blank	BS	% Recovery	True Value QC	RPD	Qualifier	
Benzene*	<0.050	0.050	08/16/2022	ND	1.93	96.4	2.00	7.14		
Toluene*	<0.050	0.050	08/16/2022	ND	2.09	105	2.00	11.3		
Ethylbenzene*	<0.050	0.050	08/16/2022	ND	1.94	97.0	2.00	7.11		
Total Xylenes*	<0.150	0.150	08/16/2022	ND	6.03	100	6.00	8.32		
Total BTEX	<0.300	0.300	08/16/2022	ND						

Surrogate: 4-Bromofluorobenzene (PIE) 106 % 69.9-140

Chloride, SM4500Cl-B		mg/kg		Analyzed By: GM					
Analyte	Result	Reporting Limit	Analyzed	Method Blank	BS	% Recovery	True Value QC	RPD	Qualifier
Chloride	64.0	16.0	08/17/2022	ND	432	108	400	0.00	
TPH 8015M		mg/kg		Analyzed By: MS					

TPH 8015M		mg/kg	Analyzed By: MS						
Analyte	Result	Reporting Limit	Analyzed	Method Blank	BS	% Recovery	True Value QC	RPD	Qualifier
GRO C6-C10*	<10.0	10.0	08/16/2022	ND	219	110	200	8.65	
DRO >C10-C28*	<10.0	10.0	08/16/2022	ND	200	100	200	10.4	
EXT DRO >C28-C36	<10.0	10.0	08/16/2022	ND					

Surrogate: 1-Chlorooctane 92.0 % 43-149

Surrogate: 1-Chlorooctadecane 106 % 42.5-161

Cardinal Laboratories

*=Accredited Analyte

PLEASE NOTE: Liability and Damages. Cardinal's liability and client's exclusive remedy for any claim arising, whether based in contract or tort, shall be limited to the amount paid by client for analyses. All claims, including those for negligence and any other cause whatsoever shall be deemed waived unless made in writing and received by Cardinal within thirty (30) days after completion of the applicable service. In no event shall Cardinal be liable for incidental or consequential damages, including, without limitation, business interruptions, loss of use, or loss of profits incurred by client, its subsidiaries, affiliates or successors arising out of or related to the performance of the services hereunder by Cardinal, regardless of whether such claim is based upon any of the above stated reasons or otherwise. Results relate only to the samples identified above. This report shall not be reproduced except in full with written approval of Cardinal Laboratories.

Celey D. Keene, Lab Director/Quality Manager



PHONE (575) 393-2326 • 101 E. MARLAND • HOBBS, NM 88240

Analytical Results For:

R T HICKS CONSULTANTS
 RANDALL HICKS
 901 RIO GRANDE BLVD SUITE F-142
 ALBUQUERQUE NM, 87104
 Fax To: NONE

Received: 08/12/2022
 Reported: 08/18/2022
 Project Name: FED 128 AST
 Project Number: NOT GIVEN
 Project Location: NM

Sampling Date: 08/12/2022
 Sampling Type: Soil
 Sampling Condition: Cool & Intact
 Sample Received By: Shalyn Rodriguez

Sample ID: E 4 - 2-4' (H223698-15)

BTEX 8021B		mg/kg		Analyzed By: JH						
Analyte	Result	Reporting Limit	Analyzed	Method Blank	BS	% Recovery	True Value QC	RPD	Qualifier	
Benzene*	<0.050	0.050	08/16/2022	ND	1.93	96.4	2.00	7.14		
Toluene*	<0.050	0.050	08/16/2022	ND	2.09	105	2.00	11.3		
Ethylbenzene*	<0.050	0.050	08/16/2022	ND	1.94	97.0	2.00	7.11		
Total Xylenes*	<0.150	0.150	08/16/2022	ND	6.03	100	6.00	8.32		
Total BTEX	<0.300	0.300	08/16/2022	ND						

Surrogate: 4-Bromofluorobenzene (PIE) 106 % 69.9-140

Chloride, SM4500Cl-B		mg/kg		Analyzed By: GM					
Analyte	Result	Reporting Limit	Analyzed	Method Blank	BS	% Recovery	True Value QC	RPD	Qualifier
Chloride	64.0	16.0	08/17/2022	ND	432	108	400	0.00	
TPH 8015M		mg/kg		Analyzed By: MS					

Surrogate: 1-Chlorooctane 79.4 % 43-149

Surrogate: 1-Chlorooctadecane 92.3 % 42.5-161

Cardinal Laboratories

*=Accredited Analyte

PLEASE NOTE: Liability and Damages. Cardinal's liability and client's exclusive remedy for any claim arising, whether based in contract or tort, shall be limited to the amount paid by client for analyses. All claims, including those for negligence and any other cause whatsoever shall be deemed waived unless made in writing and received by Cardinal within thirty (30) days after completion of the applicable service. In no event shall Cardinal be liable for incidental or consequential damages, including, without limitation, business interruptions, loss of use, or loss of profits incurred by client, its subsidiaries, affiliates or successors arising out of or related to the performance of the services hereunder by Cardinal, regardless of whether such claim is based upon any of the above stated reasons or otherwise. Results relate only to the samples identified above. This report shall not be reproduced except in full with written approval of Cardinal Laboratories.

Celey D. Keene, Lab Director/Quality Manager



PHONE (575) 393-2326 • 101 E. MARLAND • HOBBS, NM 88240

Analytical Results For:

R T HICKS CONSULTANTS
 RANDALL HICKS
 901 RIO GRANDE BLVD SUITE F-142
 ALBUQUERQUE NM, 87104
 Fax To: NONE

Received: 08/12/2022
 Reported: 08/18/2022
 Project Name: FED 128 AST
 Project Number: NOT GIVEN
 Project Location: NM

Sampling Date: 08/12/2022
 Sampling Type: Soil
 Sampling Condition: Cool & Intact
 Sample Received By: Shalyn Rodriguez

Sample ID: E 4 - 4.25' (H223698-16)

BTEX 8021B			mg/kg		Analyzed By: JH					
Analyte	Result	Reporting Limit	Analyzed	Method Blank	BS	% Recovery	True Value QC	RPD	Qualifier	
Benzene*	<0.050	0.050	08/16/2022	ND	1.93	96.4	2.00	7.14		
Toluene*	<0.050	0.050	08/16/2022	ND	2.09	105	2.00	11.3		
Ethylbenzene*	<0.050	0.050	08/16/2022	ND	1.94	97.0	2.00	7.11		
Total Xylenes*	<0.150	0.150	08/16/2022	ND	6.03	100	6.00	8.32		
Total BTEX	<0.300	0.300	08/16/2022	ND						

Surrogate: 4-Bromofluorobenzene (PIE) 105 % 69.9-140

Chloride, SM4500Cl-B		mg/kg		Analyzed By: GM					
Analyte	Result	Reporting Limit	Analyzed	Method Blank	BS	% Recovery	True Value QC	RPD	Qualifier
Chloride	48.0	16.0	08/17/2022	ND	432	108	400	0.00	
TPH 8015M		mg/kg		Analyzed By: MS					

Surrogate: 1-Chlorooctane 85.1 % 43-149

Surrogate: 1-Chlorooctadecane 102 % 42.5-161

Cardinal Laboratories

*=Accredited Analyte

PLEASE NOTE: Liability and Damages. Cardinal's liability and client's exclusive remedy for any claim arising, whether based in contract or tort, shall be limited to the amount paid by client for analyses. All claims, including those for negligence and any other cause whatsoever shall be deemed waived unless made in writing and received by Cardinal within thirty (30) days after completion of the applicable service. In no event shall Cardinal be liable for incidental or consequential damages, including, without limitation, business interruptions, loss of use, or loss of profits incurred by client, its subsidiaries, affiliates or successors arising out of or related to the performance of the services hereunder by Cardinal, regardless of whether such claim is based upon any of the above stated reasons or otherwise. Results relate only to the samples identified above. This report shall not be reproduced except in full with written approval of Cardinal Laboratories.

Celey D. Keene, Lab Director/Quality Manager



PHONE (575) 393-2326 • 101 E. MARLAND • HOBBS, NM 88240

Analytical Results For:

R T HICKS CONSULTANTS
 RANDALL HICKS
 901 RIO GRANDE BLVD SUITE F-142
 ALBUQUERQUE NM, 87104
 Fax To: NONE

Received: 08/12/2022
 Reported: 08/18/2022
 Project Name: FED 128 AST
 Project Number: NOT GIVEN
 Project Location: NM

Sampling Date: 08/12/2022
 Sampling Type: Soil
 Sampling Condition: Cool & Intact
 Sample Received By: Shalyn Rodriguez

Sample ID: C 5 - 0-2' (H223698-17)

BTEX 8021B			mg/kg		Analyzed By: JH					
Analyte	Result	Reporting Limit	Analyzed	Method Blank	BS	% Recovery	True Value QC	RPD	Qualifier	
Benzene*	<0.050	0.050	08/16/2022	ND	1.93	96.4	2.00	7.14		
Toluene*	<0.050	0.050	08/16/2022	ND	2.09	105	2.00	11.3		
Ethylbenzene*	<0.050	0.050	08/16/2022	ND	1.94	97.0	2.00	7.11		
Total Xylenes*	<0.150	0.150	08/16/2022	ND	6.03	100	6.00	8.32		
Total BTEX	<0.300	0.300	08/16/2022	ND						

Surrogate: 4-Bromofluorobenzene (PIE) 106 % 69.9-140

Chloride, SM4500Cl-B		mg/kg		Analyzed By: GM					
Analyte	Result	Reporting Limit	Analyzed	Method Blank	BS	% Recovery	True Value QC	RPD	Qualifier
Chloride	96.0	16.0	08/17/2022	ND	432	108	400	0.00	
TPH 8015M		mg/kg		Analyzed By: MS					

TPH 8015M		mg/kg		Analyzed By: MS					
Analyte	Result	Reporting Limit	Analyzed	Method Blank	BS	% Recovery	True Value QC	RPD	Qualifier
GRO C6-C10*	<10.0	10.0	08/16/2022	ND	219	110	200	8.65	
DRO >C10-C28*	<10.0	10.0	08/16/2022	ND	200	100	200	10.4	
EXT DRO >C28-C36	<10.0	10.0	08/16/2022	ND					

Surrogate: 1-Chlorooctane 85.0 % 43-149

Surrogate: 1-Chlorooctadecane 100 % 42.5-161

Cardinal Laboratories

*=Accredited Analyte

PLEASE NOTE: Liability and Damages. Cardinal's liability and client's exclusive remedy for any claim arising, whether based in contract or tort, shall be limited to the amount paid by client for analyses. All claims, including those for negligence and any other cause whatsoever shall be deemed waived unless made in writing and received by Cardinal within thirty (30) days after completion of the applicable service. In no event shall Cardinal be liable for incidental or consequential damages, including, without limitation, business interruptions, loss of use, or loss of profits incurred by client, its subsidiaries, affiliates or successors arising out of or related to the performance of the services hereunder by Cardinal, regardless of whether such claim is based upon any of the above stated reasons or otherwise. Results relate only to the samples identified above. This report shall not be reproduced except in full with written approval of Cardinal Laboratories.

Celey D. Keene, Lab Director/Quality Manager



PHONE (575) 393-2326 • 101 E. MARLAND • HOBBS, NM 88240

Analytical Results For:

R T HICKS CONSULTANTS
 RANDALL HICKS
 901 RIO GRANDE BLVD SUITE F-142
 ALBUQUERQUE NM, 87104
 Fax To: NONE

Received: 08/12/2022
 Reported: 08/18/2022
 Project Name: FED 128 AST
 Project Number: NOT GIVEN
 Project Location: NM

Sampling Date: 08/12/2022
 Sampling Type: Soil
 Sampling Condition: Cool & Intact
 Sample Received By: Shalyn Rodriguez

Sample ID: C 5 - 0-4' (H223698-18)

BTEX 8021B			mg/kg		Analyzed By: JH					
Analyte	Result	Reporting Limit	Analyzed	Method Blank	BS	% Recovery	True Value QC	RPD	Qualifier	
Benzene*	<0.050	0.050	08/16/2022	ND	1.93	96.4	2.00	7.14		
Toluene*	<0.050	0.050	08/16/2022	ND	2.09	105	2.00	11.3		
Ethylbenzene*	<0.050	0.050	08/16/2022	ND	1.94	97.0	2.00	7.11		
Total Xylenes*	<0.150	0.150	08/16/2022	ND	6.03	100	6.00	8.32		
Total BTEX	<0.300	0.300	08/16/2022	ND						

Surrogate: 4-Bromofluorobenzene (PIE) 106 % 69.9-140

Chloride, SM4500Cl-B		mg/kg		Analyzed By: GM					
Analyte	Result	Reporting Limit	Analyzed	Method Blank	BS	% Recovery	True Value QC	RPD	Qualifier
Chloride	144	16.0	08/17/2022	ND	432	108	400	0.00	
TPH 8015M		mg/kg		Analyzed By: MS					

TPH 8015M		mg/kg		Analyzed By: MS					
Analyte	Result	Reporting Limit	Analyzed	Method Blank	BS	% Recovery	True Value QC	RPD	Qualifier
GRO C6-C10*	<10.0	10.0	08/16/2022	ND	219	110	200	8.65	
DRO >C10-C28*	<10.0	10.0	08/16/2022	ND	200	100	200	10.4	
EXT DRO >C28-C36	<10.0	10.0	08/16/2022	ND					

Surrogate: 1-Chlorooctane 82.8 % 43-149

Surrogate: 1-Chlorooctadecane 97.5 % 42.5-161

Cardinal Laboratories

*=Accredited Analyte

PLEASE NOTE: Liability and Damages. Cardinal's liability and client's exclusive remedy for any claim arising, whether based in contract or tort, shall be limited to the amount paid by client for analyses. All claims, including those for negligence and any other cause whatsoever shall be deemed waived unless made in writing and received by Cardinal within thirty (30) days after completion of the applicable service. In no event shall Cardinal be liable for incidental or consequential damages, including, without limitation, business interruptions, loss of use, or loss of profits incurred by client, its subsidiaries, affiliates or successors arising out of or related to the performance of the services hereunder by Cardinal, regardless of whether such claim is based upon any of the above stated reasons or otherwise. Results relate only to the samples identified above. This report shall not be reproduced except in full with written approval of Cardinal Laboratories.

Celey D. Keene, Lab Director/Quality Manager



PHONE (575) 393-2326 • 101 E. MARLAND • HOBBS, NM 88240

Analytical Results For:

R T HICKS CONSULTANTS
 RANDALL HICKS
 901 RIO GRANDE BLVD SUITE F-142
 ALBUQUERQUE NM, 87104
 Fax To: NONE

Received: 08/12/2022
 Reported: 08/18/2022
 Project Name: FED 128 AST
 Project Number: NOT GIVEN
 Project Location: NM

Sampling Date: 08/12/2022
 Sampling Type: Soil
 Sampling Condition: Cool & Intact
 Sample Received By: Shalyn Rodriguez

Sample ID: C 5 - 2-4' (H223698-19)

BTEX 8021B			mg/kg		Analyzed By: JH					
Analyte	Result	Reporting Limit	Analyzed	Method Blank	BS	% Recovery	True Value QC	RPD	Qualifier	
Benzene*	<0.050	0.050	08/16/2022	ND	1.93	96.4	2.00	7.14		
Toluene*	<0.050	0.050	08/16/2022	ND	2.09	105	2.00	11.3		
Ethylbenzene*	<0.050	0.050	08/16/2022	ND	1.94	97.0	2.00	7.11		
Total Xylenes*	<0.150	0.150	08/16/2022	ND	6.03	100	6.00	8.32		
Total BTEX	<0.300	0.300	08/16/2022	ND						

Surrogate: 4-Bromofluorobenzene (PIE) 107 % 69.9-140

Chloride, SM4500Cl-B		mg/kg		Analyzed By: GM					
Analyte	Result	Reporting Limit	Analyzed	Method Blank	BS	% Recovery	True Value QC	RPD	Qualifier
Chloride	160	16.0	08/17/2022	ND	432	108	400	0.00	
TPH 8015M		mg/kg		Analyzed By: MS					

GRO C6-C10*	<10.0	10.0	08/16/2022	ND	219	110	200	8.65	
DRO >C10-C28*	<10.0	10.0	08/16/2022	ND	200	100	200	10.4	
EXT DRO >C28-C36	<10.0	10.0	08/16/2022	ND					

Surrogate: 1-Chlorooctane 78.7 % 43-149

Surrogate: 1-Chlorooctadecane 95.7 % 42.5-161

Cardinal Laboratories

*=Accredited Analyte

PLEASE NOTE: Liability and Damages. Cardinal's liability and client's exclusive remedy for any claim arising, whether based in contract or tort, shall be limited to the amount paid by client for analyses. All claims, including those for negligence and any other cause whatsoever shall be deemed waived unless made in writing and received by Cardinal within thirty (30) days after completion of the applicable service. In no event shall Cardinal be liable for incidental or consequential damages, including, without limitation, business interruptions, loss of use, or loss of profits incurred by client, its subsidiaries, affiliates or successors arising out of or related to the performance of the services hereunder by Cardinal, regardless of whether such claim is based upon any of the above stated reasons or otherwise. Results relate only to the samples identified above. This report shall not be reproduced except in full with written approval of Cardinal Laboratories.

Celey D. Keene, Lab Director/Quality Manager



PHONE (575) 393-2326 • 101 E. MARLAND • HOBBS, NM 88240

Analytical Results For:

R T HICKS CONSULTANTS
 RANDALL HICKS
 901 RIO GRANDE BLVD SUITE F-142
 ALBUQUERQUE NM, 87104
 Fax To: NONE

Received: 08/12/2022
 Reported: 08/18/2022
 Project Name: FED 128 AST
 Project Number: NOT GIVEN
 Project Location: NM

Sampling Date: 08/12/2022
 Sampling Type: Soil
 Sampling Condition: Cool & Intact
 Sample Received By: Shalyn Rodriguez

Sample ID: C 5 - 4.25' (H223698-20)

BTEX 8021B		mg/kg		Analyzed By: JH						
Analyte	Result	Reporting Limit	Analyzed	Method Blank	BS	% Recovery	True Value QC	RPD	Qualifier	
Benzene*	<0.050	0.050	08/16/2022	ND	1.93	96.4	2.00	7.14		
Toluene*	<0.050	0.050	08/16/2022	ND	2.09	105	2.00	11.3		
Ethylbenzene*	<0.050	0.050	08/16/2022	ND	1.94	97.0	2.00	7.11		
Total Xylenes*	<0.150	0.150	08/16/2022	ND	6.03	100	6.00	8.32		
Total BTEX	<0.300	0.300	08/16/2022	ND						

Surrogate: 4-Bromofluorobenzene (PIE) 108 % 69.9-140

Chloride, SM4500Cl-B		mg/kg		Analyzed By: GM					
Analyte	Result	Reporting Limit	Analyzed	Method Blank	BS	% Recovery	True Value QC	RPD	Qualifier
Chloride	192	16.0	08/17/2022	ND	432	108	400	0.00	
TPH 8015M		mg/kg		Analyzed By: MS					

Surrogate: 1-Chlorooctane 95.3 % 43-149

Surrogate: 1-Chlorooctadecane 114 % 42.5-161

Cardinal Laboratories

*=Accredited Analyte

PLEASE NOTE: Liability and Damages. Cardinal's liability and client's exclusive remedy for any claim arising, whether based in contract or tort, shall be limited to the amount paid by client for analyses. All claims, including those for negligence and any other cause whatsoever shall be deemed waived unless made in writing and received by Cardinal within thirty (30) days after completion of the applicable service. In no event shall Cardinal be liable for incidental or consequential damages, including, without limitation, business interruptions, loss of use, or loss of profits incurred by client, its subsidiaries, affiliates or successors arising out of or related to the performance of the services hereunder by Cardinal, regardless of whether such claim is based upon any of the above stated reasons or otherwise. Results relate only to the samples identified above. This report shall not be reproduced except in full with written approval of Cardinal Laboratories.

Celey D. Keene, Lab Director/Quality Manager



PHONE (575) 393-2326 ° 101 E. MARLAND ° HOBBS, NM 88240

Notes and Definitions

ND	Analyte NOT DETECTED at or above the reporting limit
RPD	Relative Percent Difference
**	Samples not received at proper temperature of 6°C or below.
***	Insufficient time to reach temperature.
-	Chloride by SM4500Cl-B does not require samples be received at or below 6°C
	Samples reported on an as received basis (wet) unless otherwise noted on report

Cardinal Laboratories

*=Accredited Analyte

PLEASE NOTE: Liability and Damages. Cardinal's liability and client's exclusive remedy for any claim arising, whether based in contract or tort, shall be limited to the amount paid by client for analyses. All claims, including those for negligence and any other cause whatsoever shall be deemed waived unless made in writing and received by Cardinal within thirty (30) days after completion of the applicable service. In no event shall Cardinal be liable for incidental or consequential damages, including, without limitation, business interruptions, loss of use, or loss of profits incurred by client, its subsidiaries, affiliates or successors arising out of or related to the performance of the services hereunder by Cardinal, regardless of whether such claim is based upon any of the above stated reasons or otherwise. Results relate only to the samples identified above. This report shall not be reproduced except in full with written approval of Cardinal Laboratories.

A handwritten signature in black ink, appearing to read "Celey D. Keene".

Celey D. Keene, Lab Director/Quality Manager



CHAIN-OF-CUSTODY AND ANALYSIS REQUEST

101 East Marland, Hobbs, NM 88240
(575) 393-2326 FAX (575) 393-2476

BILL TO

ANALYSIS REQUEST

Company Name:

Project Manager:

Address:

City:

State:

Phone #:

Fax #:

Project #:

Project Name:

Project Location:

Sample Name:

FOR LAB USE ONLY

Lab I.D.

Sample I.D.

(G)RAB OR (C)OMP.

CONTAINERS

GROUNDWATER

WASTEWATER

SOIL

OIL

SLUDGE

OTHER:

ACID/BASE:

ICE / COOL

OTHER:

DATE

TIME

CL

BTEX

TPH



101 East Marland, Hobbs, NM 88240
(575) 393-2326 FAX (575) 393-2476

CHAIN-OF-CUSTODY AND ANALYSIS REQUEST

Company Name: RT Hicks Project Manager: Randy Hicks Address: 901 Rio Grande Blvd NW City: Albuquerque State: NM Zip: 87104 Phone #: 505-266-5004 Fax #: Project #: Project Name: Fed 128 AST, NM Project Location: Sampler Name: Aaron Garcia		P.O. #: Company: RT Hicks Attn: Address: City: State: Zip: Phone #: Fax #:	
FOR LAB USE ONLY		BILL TO	
Lab I.D. H035008		ANALYSIS REQUEST	
Sample I.D. E3 - 2-4 E3 - 4-25 E4 - 0-2 E4 - 0-4 E4 - 2-4 E4 - 4-25 E4 - 0-2 E4 - 0-4 E4 - 2-4 E4 - 4-25		MATRIX (G)RAB OR (C)OMP. # CONTAINERS GROUNDWATER WASTEWATER SOIL OIL SLUDGE OTHER: ACID/BASE: ICE / COOL OTHER:	
DATE 8/12/22 1035 8/14/22 1035 8/12/22 1045 8/14/22 1045 1045 1045 1055 1055 1055 1055		SAMPLING CL BTEX TPH	
Relinquished By: [Signature] Date: 8/11/22 Time: 1111 Received By: [Signature] Date: 8/11/22 Time: 1111 Received By: [Signature]		REMARKS:	
Delivered By: (Circle One) Sample - UPS - Bus - Other:		Observed Temp. °C: 6.0°C Corrected Temp. °C: 5.4°C Sample Condition: Cool Intact <input checked="" type="checkbox"/> Yes <input type="checkbox"/> No Checked By: [Signature]	
Turnaround Time: Standard <input checked="" type="checkbox"/> Rush <input type="checkbox"/> Thermometer ID #113 Correction Factor -0.8°C		Bacteria (only) Sample Condition: Cool Intact <input type="checkbox"/> Observed Temp. °C <input type="checkbox"/> Yes <input type="checkbox"/> No Corrected Temp. °C	

Venegas, Victoria, EMNRD

From: Venegas, Victoria, EMNRD
Sent: Wednesday, October 12, 2022 10:56 AM
To: Matthew Grisell
Cc: rgomez@blm.gov; Michael Bailey; Randy T. Hicks PG
Subject: 2RF-169 - FED 128 AST FACILITY ID [fVV2206936015]
Attachments: C-147 2RF-169 - FED 128 AST FACILITY ID [fVV2206936015] Closure. 10.12.2022.pdf

2RF-169 - FED 128 AST FACILITY ID [fVV2206936015]

Mr. Grisell,
NMOCD has reviewed the closure report submitted by [329620] Enchantment Water, LLC on 10/12/2022, for 2RF-169 - FED 128 AST FACILITY ID [fVV2206936015] in O-28-23S-31E, Eddy County, New Mexico. The closure report has been approved. The permit associated with 2RF-169 - FED 128 AST FACILITY ID [fVV2206936015] is closed.
Please note that according to 19.15.34.14.G: The re-vegetation and reclamation obligations imposed by federal, state trust land or tribal agencies on lands managed by those agencies shall supersede these provisions and govern the obligations of any operator subject to those provisions, provided that the other requirements provide equal or better protection of fresh water, human health and the environment. As stated by 19.15.34.14.H, the operator shall notify the division when reclamation and re-vegetation are complete.
Please let me know if you have any additional questions.
Regards,

Victoria Venegas • Environmental Specialist
Environmental Bureau
EMNRD - Oil Conservation Division
(575) 909-0269 | Victoria.Venegas@emnrd.nm.gov
<http://www.emnrd.state.nm.us/OCD/>



From: Matthew Grisell <matthew@caliberlandman.com>
Sent: Tuesday, October 11, 2022 2:07 PM
To: Venegas, Victoria, EMNRD <Victoria.Venegas@emnrd.nm.gov>
Cc: rgomez@blm.gov; Michael Bailey <michael@caliberlandman.com>; Randy T. Hicks PG <r@rthicksconsult.com>
Subject: [EXTERNAL] Re: Enchantment Water, LLC Fed 128 AST Containment C-147 Closure

CAUTION: This email originated outside of our organization. Exercise caution prior to clicking on links or opening attachments.

Hi Victoria,

The fully executed and attached copy of the Closure Report has been uploaded to the OCD website. Please let me know if there is anything else you need from me relating to the closure of the subject AST. Thank you!

Take care,

Matthew W. Grisell
Managing Partner
Caliber Land Management, LLC
14340 Memorial Dr., Suite 600
Houston, Texas 77079
Mobile: (832) 725-8503
Office: (346) 409-2742
matthew@caliberlandman.com
www.caliberlandman.com



CONFIDENTIALITY / PRIVILEGE NOTICE:

This communication and any attachment(s) are confidential and/or privileged, and are for the sole use of the addressee(s). If you received this transmission in error, you are advised that any unauthorized review, use, disclosure, or distribution is strictly prohibited. In such event, please contact the sender by return email and destroy all copies of the original message and any attachment(s). Thank you.

On Oct 10, 2022, at 7:33 AM, Randall Hicks <r@rthicksconsult.com> wrote:

Ms. Venegas:

The purpose of this submission is to document that the surface owner representative received a copy of the C-147 for closure as required by OCD Rules.

Please note:

1. Enchantment will sign the C-147 then upload this document to the OCD portal.
2. The pad upon which Enchantment constructed the AST will be used for E&P activities. Therefore, the closure of the AST should not trigger reclamation.

Please contact me if you have any questions.

Randall T. Hicks PG
R.T.Hicks Consultants LTD
901 Rio Grande Blvd. NW F-142
Albuquerque, NM 87104

505-238-9515 (mobile and best contact)
505-266-5004 (office land line)

<CLOSURE_REPORT_Final10-10-22.pdf>

District I

1625 N. French Dr., Hobbs, NM 88240
 Phone:(575) 393-6161 Fax:(575) 393-0720

District II

811 S. First St., Artesia, NM 88210
 Phone:(575) 748-1283 Fax:(575) 748-9720

District III

1000 Rio Brazos Rd., Aztec, NM 87410
 Phone:(505) 334-6178 Fax:(505) 334-6170

District IV

1220 S. St Francis Dr., Santa Fe, NM 87505
 Phone:(505) 476-3470 Fax:(505) 476-3462

State of New Mexico
Energy, Minerals and Natural Resources
Oil Conservation Division
1220 S. St Francis Dr.
Santa Fe, NM 87505

CONDITIONS

Action 150181

CONDITIONS

Operator: Enchantment Water, LLC P.O Box 60 Jal, TX 88252	OGRID: 329620
	Action Number: 150181
	Action Type: [C-147] Water Recycle Long (C-147L)

CONDITIONS

Created By	Condition	Condition Date
vvenegas	NMOCD has reviewed the closure report submitted by [329620] Enchantment Water, LLC on 10/12/2022, for 2RF-169 - FED 128 AST FACILITY ID [fVV2206936015] in O-28-23S-31E, Eddy County, New Mexico. The closure report has been approved. The permit associated with 2RF-169 - FED 128 AST FACILITY ID [fVV2206936015] is closed. Please note that according to 19.15.34.14.G: The re-vegetation and reclamation obligations imposed by federal, state trust land or tribal agencies on lands managed by those agencies shall supersede these provisions and govern the obligations of any operator subject to those provisions, provided that the other requirements provide equal or better protection of fresh water, human health and the environment. As stated by 19.15.34.14.H, the operator shall notify the division when reclamation and re-vegetation are complete.	10/12/2022