



Ameredev II, LLC

2901 Via Fortuna Suite 600 • Austin, Texas 78746 • Phone (737) 300-4700

April 9, 2024

NM Oil Conservation Division
Environmental Bureau
1220 South St. Francis Dr.
Santa Fe, NM 87505

RE: NW, SW, and NE Recycling ASTs
Ike's Containment #1 and Recycling Facility
1RF-508
Facility ID: fVV2326835427
UL D Section 27 T26S R36E, Lea County

Ameredev Operating respectfully submits this closure report for the 3 AST containments which are associated with above recycling facility, identified as NW AST, SW AST, and NE AST. Closure activities occurred in accordance with closure plan in approved registration application.

Dates of operation/deconstruction:

- NW AST: 11/2018 - 9/2023
- SW AST: 5/2019 – 4/2021
- NE AST: 11/2018 – 4/2019

Site map is presented in Plate 1 and shows the AST footprints, extent of previously identified and closed releases, approximate composite sample point locations. The pad will remain in use for oil and gas production operations.

Containment Deconstruction

Residual fluids in the containments were removed and sent to disposal at a division-approved facility prior to deconstruction.

Following removal of fluids, all solid contents, synthetic liners, and leak detection materials were removed and transported to a division-approved facility.

Deconstruction of the steel walls and other infrastructure occurred according to the manufacturer's recommendations (Tank Tech).

Ike's Containment #1 and Recycling Facility Recycling ASTs Closure Report

Soil Sampling

Following deconstruction, Ameredev tested the soils beneath the containments for contamination with a five-point composite sample to include any areas which may have been impacted as observed by stained or wet soils. Soil sampling for the NE and SW AST footprints occurred on September 22, 2023, following deconstruction of the NE AST. Soil samples were analyzed for the constituents of concern as listed in Table I of 19.15.34.14 NMAC.

Samples obtained of soils beneath the NE and the SW containments met the most stringent closure criteria as listed in Table I of 19.15.34.14 NMAC.

A prior release was located south of the NW AST (Incident ID# NCS2003549670) and deferral of the release area immediately adjacent to the AST, pending deconstruction of the NW AST, was approved by NMOCD on May 26, 2020. Following deconstruction in September 2023, horizontal delineation sampling of the deferred area was completed. All samples met the most stringent closure criteria as listed in Table 1 of 19.15.29.12. Closure of Incident ID# NCS2003549670 was approved by NMOCD on February 20, 2024. Email notification attached in Appendix A.

During assessment of soils beneath the NW AST, an area of wet soil was noted to the southeast of the AST footprint. Field samples revealed impact with elevated chlorides. A produced water release was reported to NMOCD (Incident ID# nAPP2328943035). Remediation activities occurred according to 19.15.29 NMOCD and closure was approved by NMOCD on March 13, 2024. Conditions of approval include remediation and reclamation requirements when the site is no longer in use for oil and gas production. Email notification attached in Appendix A.

A request for extension for closure of the Ike's ASTS, pending closure approval of above Incidents, was submitted and approved on December 20, 2023. Email notification attached in Appendix A.

After closure of the 2 releases at this location, Ameredev proceeded with closure sampling of the NW AST. A five-point composite sample of the NW AST, including any areas which may have been impacted as observed by stained or wet soils. occurred on March 25, 2024 and was analyzed for constituents of concern. All contaminate concentrations were below the most stringent parameters listed in Table 1 of 19.15.34.14 NMAC. Site characterization information, including documentation of DTW > 100 ft bgs is presented in previously approved permitting/registration application.

Summary of analytical is presented in Table A.
Laboratory Certificates of Analysis are located in Appendix B.

April 9, 2024

Ike's Containment #1 and Recycling Facility
Recycling ASTs Closure Report

Remediation, Restoration, & Reclamation

No excavation or backfilling was required. The site is stable and has been restored as an active production site in-use for oil and gas activities.

When the location is no longer in-use for oil and gas production, the site will be restored and reclaimed to the condition that existed prior to the construction of the recycling containment in accordance with 19.15.34.14 E-H.

- Reclaim the containment's location to a safe and stable condition that blends with the surrounding undisturbed area.
- Topsoil and subsoils shall be replaced to their original relative positions and contoured to achieve erosion control, long-term stability, and preservation of surface water flow patterns.
- The disturbed area shall then be reseeded in the first favorable growing season following closure of a recycling containment.
- Reclamation will be considered complete when all ground surface disturbing activities at the site have been completed, and a uniform vegetative cover has been established that reflects a life-form ratio of plus or minus fifty percent (50%) of pre-disturbance levels and a total percent plant cover of at least seventy percent (70%) of pre-disturbance levels, excluding noxious weeds.
- NMOCD will be notified when revegetation is complete.

Please contact me with any questions.

Sincerely,



Shane McNeely
Ameredev II, LLC
Email: smcneely@ameredev.com

April 9, 2024

State of New Mexico
Energy Minerals and Natural Resources
Department Oil Conservation Division
1220 South St. Francis Dr.
Santa Fe, NM 87505
<https://www.emnrd.nm.gov/ocd/ocd-e-permitting/>

Form C-147
Revised October 11, 2022

Recycling Facility and/or Recycling Containment

Type of Facility: ☐ Recycling Facility ☒ Recycling Containment*
Type of action: ☐ Permit ☐ Registration **Closure of:**
☐ Modification ☐ Extension NW AST: 8/2018 - 9/2023
☒ Closure ☐ Other (explain) SW AST: 6/2019 - 4/2021
NE AST: 5/2018 - 6/2019

*** At the time C-147 is submitted to the division for a Recycling Containment, a copy shall be provided to the surface owner.**

Be advised that approval of this request does not relieve the operator of liability should operations result in pollution of surface water, ground water or the environment. Nor does approval relieve the operator of its responsibility to comply with any other applicable governmental authority's rules, regulations or ordinances.

1.
 Operator: Ameredev II, LLC (For multiple operators attach page with information) OGRID #: 372224
 Address: 2901 Via Fortuna #600, Austin, TX 78746
 Facility or well name (include API# if associated with a well): Ike's Containment #1 and Recycling Facility
 OCD Permit Number: 1 RF-508 (For new facilities the permit number will be assigned by the district office)
 U/L or Qtr/Qtr D Section 27 Township 26S Range 36E County: Lea
 Surface Owner: ☐ Federal ☐ State ☒ Private ☐ Tribal Trust or Indian Allotment

2.
☐ **Recycling Facility:**
 Location of recycling facility (if applicable): Latitude _____ Longitude _____ NAD83
 Proposed Use: ☐ Drilling* ☐ Completion* ☐ Production* ☐ Plugging*
**The re-use of produced water may NOT be used until fresh water zones are cased and cemented*
☐ Other, *requires permit for other uses. Describe use, process, testing, volume of produced water and ensure there will be no adverse impact on groundwater or surface water.*
☐ Fluid Storage
☐ Above ground tanks ☐ Recycling containment ☐ Activity permitted under 19.15.17 NMAC explain type _____
☐ Activity permitted under 19.15.36 NMAC explain type: _____ ☐ Other explain _____
☐ For multiple or additional recycling containments, attach design and location information of each containment
☐ **Closure Report (required within 60 days of closure completion):** ☐ Recycling Facility Closure Completion Date: _____

3.
☒ **Recycling Containment:** NW AST
☐ Annual Extension after initial 5 years (attach summary of monthly leak detection inspections for previous year)
 Center of Recycling Containment (if applicable): Latitude 32.0209189 Longitude -103.2607928 NAD83
☒ For multiple or additional recycling containments, attach design and location information of each containment
☒ Lined ☐ Liner type: Thickness _____ mil ☐ LLDPE ☐ HDPE ☐ PVC ☐ Other _____
☐ String-Reinforced Primary liner: Dual (2) 40 mil LLDPE; Secondary liner: 60 mil HDPE
 Liner Seams: ☒ Welded ☐ Factory ☐ Other _____ Volume: 60 K bbl Dimensions: L _____ x W _____ x D 12 ft 3.5 in
☒ Recycling Containment Closure Completion Date: 09/15/2023 Diameter 191 ft

☒ **Recycling Containment:** SW AST

☐ Annual Extension after initial 5 years (attach summary of monthly leak detection inspections for previous year)

Center of Recycling Containment (if applicable): Latitude 32.0191416 Longitude -103.2608087 NAD83

☒ For multiple or additional recycling containments, attach design and location information of each containment

☒ Lined ☐ Liner type: Thickness _____ mil ☐ LLDPE ☐ HDPE ☐ PVC ☐ Other _____

☐ String-Reinforced Primary liner: Dual (2) 40 mil LLDPE; Secondary liner: 60 mil HDPE

Liner Seams: ☒ Welded ☐ Factory ☐ Other _____ Volume: 60 K bbl Dimensions: L _____ x W _____ x D 12 ft 3.5 in

☒ Recycling Containment Closure Completion Date: 04/15/2021 _____ Diameter 191 ft.

☒ **Recycling Containment:**

NE AST

☐ Annual Extension after initial 5 years (attach summary of monthly leak detection inspections for previous year)

Center of Recycling Containment (if applicable): Latitude 32.0209202 Longitude -103.2598617 NAD83

☐ For multiple or additional recycling containments, attach design and location information of each containment

☒ Lined

☐ Liner type: Thickness _____mil

☐ LLDPE

☐ HDPE

☐ PVC

☐ Other _____

☐ String-Reinforced

Primary liner: Dual (2) 40 mil LLDPE; Secondary liner 60 mil HDPE

Liner Seams: ☒ Welded ☐ Factory ☐ Other _____ Volume: 60 K bbl Dimensions: L_____ x W_____ x D 12 ft 3.5 in☒ Recycling Containment Closure Completion Date: _____04/15/2019_____ Diameter 191 ft

4.

Bonding:

- ☒ Covered under bonding pursuant to 19.15.8 NMAC per 19.15.34.15(A)(2) NMAC (These containments are limited to only the wells owned or operated by the owners of the containment.)
- ☐ Bonding in accordance with 19.15.34.15(A)(1). Amount of bond \$ _____ (work on these facilities cannot commence until bonding amounts are approved)
- ☐ Attach closure cost estimate and documentation on how the closure cost was calculated.

5.

Fencing:

- ☐ Four foot height, four strands of barbed wire evenly spaced between one and four feet
- ☒ Alternate. Please specify 8-foot game fence topped with a single strand of barbed wire.

6.

Signs:

- ☒ 12"x 24", 2" lettering, providing Operator's name, site location, and emergency telephone numbers
- ☐ Signed in compliance with 19.15.16.8 NMAC

7.

Variances:

Justifications and/or demonstrations that the proposed variance will afford reasonable protection against contamination of fresh water, human health, and the environment.

Check the below box only if a variance is requested:

- ☒ Variance(s): Requests must be submitted to the appropriate division district for consideration of approval. If a Variance is requested, include the variance information on a separate page and attach it to the C-147 as part of the application.

If a Variance is requested, it must be approved prior to implementation.

8.

Siting Criteria for Recycling Containment

Instructions: The applicant must provide attachments that demonstrate compliance for each siting criteria below as part of the application. Potential examples of the siting attachment source material are provided below under each criteria.

General siting**Ground water is less than 50 feet below the bottom of the Recycling Containment.** **Plate 2**

NM Office of the State Engineer - iWATERS database search; USGS; Data obtained from nearby wells

☐ Yes ☒ No
☐ NA

Within incorporated municipal boundaries or within a defined municipal fresh water well field covered under a municipal ordinance adopted pursuant to NMSA 1978, Section 3-27-3, as amended. **Plate 3**

☐ Yes ☒ No
☐ NA

- Written confirmation or verification from the municipality; written approval obtained from the municipality

Within the area overlying a subsurface mine. **Plate 7**

- Written confirmation or verification or map from the NM EMNRD-Mining and Minerals Division

☐ Yes ☒ No

Within an unstable area. **Plate 8**

- Engineering measures incorporated into the design; NM Bureau of Geology & Mineral Resources; USGS; NM Geological Society; topographic map

☐ Yes ☒ No

Within a 100-year floodplain. FEMA map. **Plate 9**

☐ Yes ☒ No

Within 300 feet of a continuously flowing watercourse, or 200 feet of any other significant watercourse, or lakebed, sinkhole, or playa lake (measured from the ordinary high-water mark). **Plate 4**

☐ Yes ☒ No

- Topographic map; visual inspection (certification) of the proposed site

Within 1000 feet from a permanent residence, school, hospital, institution, or church in existence at the time of initial application.

- Visual inspection (certification) of the proposed site; aerial photo; satellite image. **Plate 5**

☐ Yes ☒ No

Within 500 horizontal feet of a spring or a fresh water well used for domestic or stock watering purposes, in existence at the time of initial application. **Plate 3**

- NM Office of the State Engineer - iWATERS database search; visual inspection (certification) of the proposed site

☐ Yes ☒ No

Within 500 feet of a wetland. **Plate 6**

- US Fish and Wildlife Wetland Identification map; topographic map; visual inspection (certification) of the proposed site

☐ Yes ☒ No

9.

Recycling Facility and/or Containment Checklist:

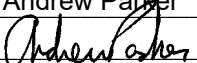
Instructions: Each of the following items must be attached to the application. Indicate, by a check mark in the box, that the documents are attached.

- ☒ Design Plan - based upon the appropriate requirements.
- ☒ Operating and Maintenance Plan - based upon the appropriate requirements.
- ☒ Closure Plan - based upon the appropriate requirements.
- ☒ Site Specific Groundwater Data -
- ☒ Siting Criteria Compliance Demonstrations -
- ☒ Certify that notice of the C-147 (only) has been sent to the surface owner(s)

10.

Operator Application Certification:

I hereby certify that the information and attachments submitted with this application are true, accurate and complete to the best of my knowledge and belief.

Name (Print): Andrew Parker Title: Environmental Specialist
Signature:  Date: 04/20/2024
e-mail address: aparker@ameredev.com Telephone: 970-570-9535

11.

OCD Representative Signature: Victoria Venegas Approval Date: 04/26/2024

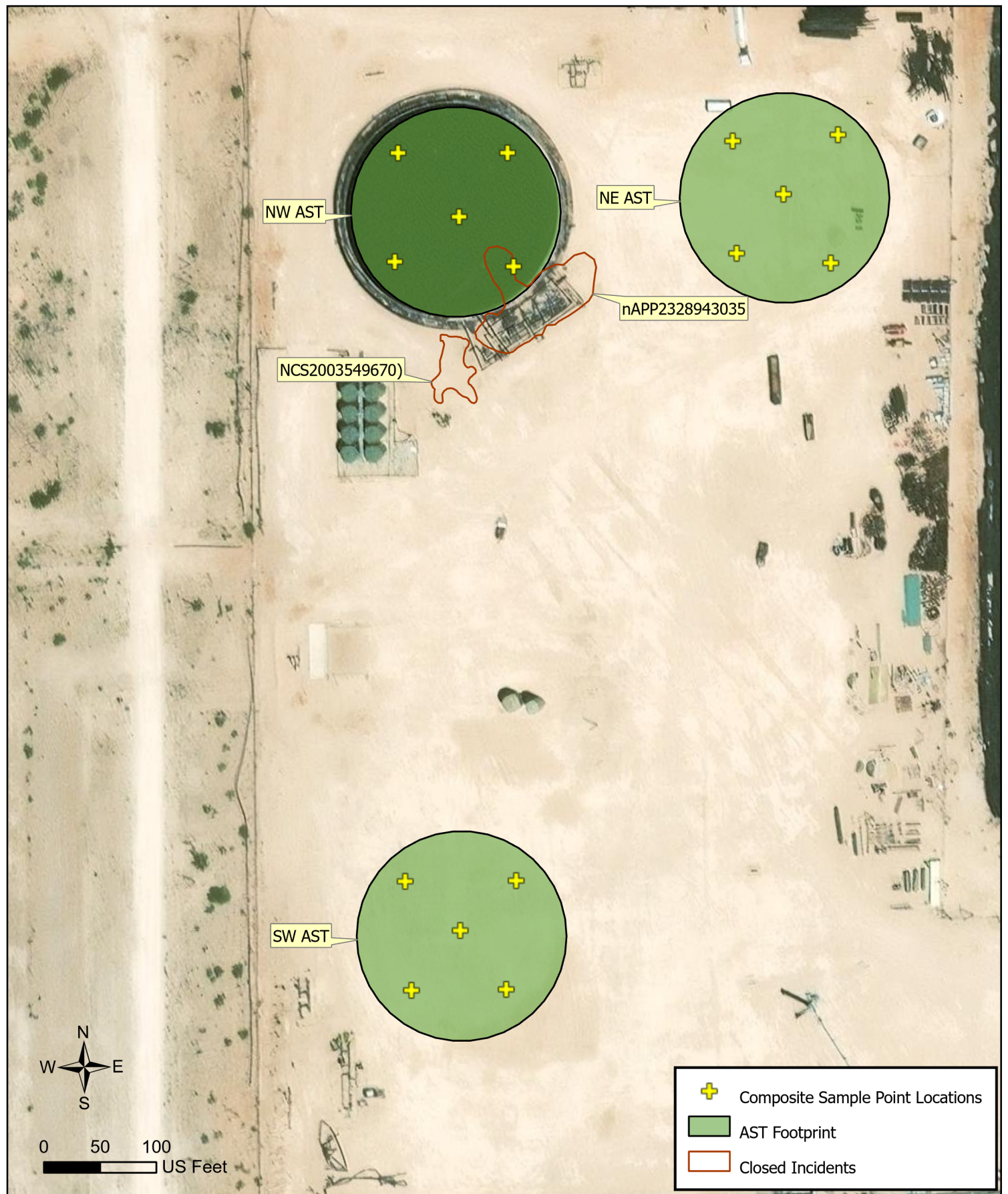
Title: Environmental Specialist OCD Permit Number: 1RF-508

- ☐ OCD Conditions _____
- ☐ Additional OCD Conditions on Attachment _____

Plates



Ameredev II, LLC



AST Closure Report Site Map

Plate 1

Ike's Containment #1 and Recycling Facility
Facility ID: fVV2326835427

04/03/2024

Tables



Ameredev II, LLC

Sample ID	Date	Discrete Depth (Feet)	Top Depth (Feet)	Bottom Depth (Feet)	Location	Chloride (mg/kg)	GRO+DRO (mg/kg)	TPH Ext. (mg/kg)	Benzene (mg/kg)	BTEX (mg/kg)	Lab	Lab #
											(Hall/Cardinal)	
NMOCD Closure Criteria												
0 - 4 feet & "not in-use"						600	--	100	10	50		
> 4 ft or "in-use"						20,000	1,000	2,500	10	50		
SW Composite	9/22/2023		0	0.5	Pad	32	<20	<30	<0.05	<0.3	Cardinal	H235184
NE Composite	9/22/2023		0	0.5	Pad	80	<20	<30	<0.05	<0.3	Cardinal	H235186
NW Composite	3/25/2024		0	0.5	Pad	400	<20	<30	<0.05	<0.3	Cardinal	H241552

Appendix A

Communications



Ameredeve II, LLC

Laura Parker

From: Andrew Parker
Sent: Thursday, January 11, 2024 6:01 PM
To: Laura Parker
Subject: FW: [EXTERNAL] The Oil Conservation Division (OCD) has approved the application, Application ID: 296647

For the files. See below.

Andrew Parker
Environmental Scientist
970-570-9535



From: OCDOnline@state.nm.us <OCDOnline@state.nm.us>
Sent: Thursday, December 28, 2023 1:03 PM
To: Andrew Parker <aparker@amerdev.com>
Subject: [EXTERNAL] The Oil Conservation Division (OCD) has approved the application, Application ID: 296647

To whom it may concern (c/o Andrew Parker for AMEREDEV OPERATING, LLC),

The OCD has approved the submitted *Permit or Registration for Recycling and Re-use of Produced Water, Drilling Fluids and Liquid Oil Field Waste (Including Recycling Containment)* (C-147L), for facility ID (f#) fVV2326835427, with the following conditions:

- **Thank you for the notification, it has been received and noted in e-permitting**

The signed C-147L can be found in the OCD Online: Imaging under the facility ID (f#).

If you have any questions regarding this application, please contact me.

Thank you,
Victoria Venegas
Environmental Specialist
575-748-1283
victoria.venegas@emnrd.nm.gov

New Mexico Energy, Minerals and Natural Resources Department
1220 South St. Francis Drive
Santa Fe, NM 87505



Ameredev II, LLC

2901 Via Fortuna Suite 600 • Austin, Texas 78746 • Phone (737) 300-4700

December 20, 2023

NM Oil Conservation Division
Environmental Bureau
1220 South St. Francis Dr.
Santa Fe, NM 87505

RE: NW, SW, and NE Recycling ASTs
Ike's Containment #1 and Recycling Facility
1RF-508
Facility ID: fVV2326835427

Ameredev Operating respectfully submits notification of the following:

Delay in closure of the above AST locations pending closure approval of 2 identified releases in the vicinity of the NW AST.

All ASTs have been deconstructed (most recently the NW AST September 28, 2023).

A prior release was located south of the NW AST (Incident ID# NCS2003549670) with deferral approved by NMOCD 5/26/2020. Following deconstruction, activities to close this incident occurred and closure report was submitted to NMOCD on October 31, 2023 and is pending review.

Following deconstruction and during site evaluation activities, a release was identified to the southeast of the NW AST footprint (Incident ID# nAPP2328943035). Closure report was submitted to NMOCD on 12/06/2023, pending review.

Sampling of the NE and the SW AST containment have been completed and met closure criteria. The site is to continue in-use for oil and gas operations.

When closure of above incidents are approved by NMOCD, Ameredev will proceed with sampling the NW AST footprint and submit the site closure report. Please advise if there is any additional action to be taken at this time.

Please contact us with any questions.

Sincerely,

Laura Parker

Laura Parker

lparker@amerdev.com

On Behalf of Amerdev Operating

December 19, 2022

District I
1625 N. French Dr., Hobbs, NM 88240
Phone:(575) 393-6161 Fax:(575) 393-0720

District II
811 S. First St., Artesia, NM 88210
Phone:(575) 748-1283 Fax:(575) 748-9720

District III
1000 Rio Brazos Rd., Aztec, NM 87410
Phone:(505) 334-6178 Fax:(505) 334-6170

District IV
1220 S. St Francis Dr., Santa Fe, NM 87505
Phone:(505) 476-3470 Fax:(505) 476-3462

State of New Mexico
Energy, Minerals and Natural Resources
Oil Conservation Division
1220 S. St Francis Dr.
Santa Fe, NM 87505

CONDITIONS

Action 296647

CONDITIONS

Operator: AMEREDEV OPERATING, LLC 2901 Via Fortuna Austin, TX 78746	OGRID: 372224
	Action Number: 296647
	Action Type: [C-147] Water Recycle Long (C-147L)

CONDITIONS

Created By	Condition	Condition Date
vvenegas	Thank you for the notification, it has been received and noted in e-permitting	12/28/2023

From: OCDOnline@state.nm.us
To: [Andrew Parker](#)
Subject: [EXTERNAL] The Oil Conservation Division (OCD) has approved the application, Application ID: 281749
Date: Tuesday, February 20, 2024 2:45:21 PM

Caution: External (ocdonline@state.nm.us)

Spam Content [Details](#)

[Report This Email](#) [FAQ](#) [Protection by INKY](#)

To whom it may concern (c/o Andrew Parker for AMEREDEV OPERATING, LLC),

The OCD has approved the submitted *Application for administrative approval of a release notification and corrective action* (C-141), for incident ID (n#) nCS2003549670, with the following conditions:

- **None**

The signed C-141 can be found in the OCD Online: Imaging under the incident ID (n#).

If you have any questions regarding this application, please contact me.

Thank you,
Nelson Velez
Environmental Specialist - Advanced
505-469-6146
Nelson.Velez@emnrd.nm.gov

New Mexico Energy, Minerals and Natural Resources Department
1220 South St. Francis Drive
Santa Fe, NM 87505

From: OCDOnline@state.nm.us
To: [Andrew Parker](#)
Subject: [EXTERNAL] The Oil Conservation Division (OCD) has approved the application, Application ID: 291332
Date: Wednesday, March 13, 2024 1:47:24 PM

Caution: External (ocdonline@state.nm.us)

Spam Content [Details](#)

[Report This Email](#) [FAQ](#) [Protection by INKY](#)

To whom it may concern (c/o Andrew Parker for AMEREDEV OPERATING, LLC),

The OCD has approved the submitted *Application for administrative approval of a release notification and corrective action* (C-141), for incident ID (n#) nAPP2328943035, with the following conditions:

- **Remediation has met 19.15.29 NMAC requirements. Soil impacts exceeding the reclamation standards have been left in place and are required to meet 19.15.29.13D (1) NMAC once the site is no longer reasonably needed for production or subsequent drilling ops.**
- **The following will be administered from this point forward per 19.15.29.12D (1) NMAC; The responsible party must test the remediated areas for contamination with representative five-point composite samples from the walls and base, and individual grab samples from any wet or discolored areas. The samples must be analyzed for the constituents listed in Table I of 19.15.29.12 NMAC or constituents from other applicable remediation standards.**

The signed C-141 can be found in the OCD Online: Imaging under the incident ID (n#).

If you have any questions regarding this application, please contact me.

Thank you,
Nelson Velez
Environmental Specialist - Advanced
505-469-6146
Nelson.Velez@emnrd.nm.gov

New Mexico Energy, Minerals and Natural Resources Department
1220 South St. Francis Drive
Santa Fe, NM 87505

Appendix B

Certificates of Analysis



Ameredev II, LLC



PHONE (575) 393-2326 ° 101 E. MARLAND ° HOBBS, NM 88240

September 27, 2023

ANDREW PARKER

AMEREDEV

2901 VIA FORTUNA , SUITE 600

AUSTIN, TX 78746

RE: SW AST COMPOSITE

Enclosed are the results of analyses for samples received by the laboratory on 09/22/23 15:46.

Cardinal Laboratories is accredited through Texas NELAP under certificate number T104704398-22-15. Accreditation applies to drinking water, non-potable water and solid and chemical materials. All accredited analytes are denoted by an asterisk (*). For a complete list of accredited analytes and matrices visit the TCEQ website at www.tceq.texas.gov/field/qa/lab_accred_certif.html.

Cardinal Laboratories is accredited through the State of Colorado Department of Public Health and Environment for:

Method EPA 552.2	Haloacetic Acids (HAA-5)
Method EPA 524.2	Total Trihalomethanes (TTHM)
Method EPA 524.4	Regulated VOCs (V1, V2, V3)

Accreditation applies to public drinking water matrices.

This report meets NELAP requirements and is made up of a cover page, analytical results, and a copy of the original chain-of-custody. If you have any questions concerning this report, please feel free to contact me.

Sincerely,

A handwritten signature in black ink that reads "Celey D. Keene". The signature is written in a cursive style with a large, stylized 'C' and 'K'.

Celey D. Keene

Lab Director/Quality Manager



PHONE (575) 393-2326 ° 101 E. MARLAND ° HOBBS, NM 88240

Analytical Results For:

AMEREDEV
 ANDREW PARKER
 2901 VIA FORTUNA , SUITE 600
 AUSTIN TX, 78746
 Fax To:

Received:	09/22/2023	Sampling Date:	09/22/2023
Reported:	09/27/2023	Sampling Type:	Soil
Project Name:	SW AST COMPOSITE	Sampling Condition:	Cool & Intact
Project Number:	NONE GIVEN	Sample Received By:	Dionica Hinojos
Project Location:	NONE GIVEN		

Sample ID: SW AST COMPOSITE 0-0.5 FT (H235184-01)

BTEX 8021B		mg/kg		Analyzed By: MS						
Analyte	Result	Reporting Limit	Analyzed	Method Blank	BS	% Recovery	True Value QC	RPD	Qualifier	
Benzene*	<0.050	0.050	09/25/2023	ND	1.86	92.8	2.00	0.510		
Toluene*	<0.050	0.050	09/25/2023	ND	1.93	96.6	2.00	1.93		
Ethylbenzene*	<0.050	0.050	09/25/2023	ND	1.94	97.1	2.00	0.649		
Total Xylenes*	<0.150	0.150	09/25/2023	ND	5.85	97.5	6.00	1.21		
Total BTEX	<0.300	0.300	09/25/2023	ND						

Surrogate: 4-Bromofluorobenzene (PID) 110 % 71.5-134

Chloride, SM4500Cl-B		mg/kg		Analyzed By: AC						
Analyte	Result	Reporting Limit	Analyzed	Method Blank	BS	% Recovery	True Value QC	RPD	Qualifier	
Chloride	32.0	16.0	09/25/2023	ND	432	108	400	3.64		

TPH 8015M		mg/kg		Analyzed By: MS					
Analyte	Result	Reporting Limit	Analyzed	Method Blank	BS	% Recovery	True Value QC	RPD	Qualifier
GRO C6-C10*	<10.0	10.0	09/25/2023	ND	206	103	200	1.43	
DRO >C10-C28*	<10.0	10.0	09/25/2023	ND	214	107	200	4.80	
EXT DRO >C28-C36	<10.0	10.0	09/25/2023	ND					

Surrogate: 1-Chlorooctane 77.4 % 48.2-134

Surrogate: 1-Chlorooctadecane 77.9 % 49.1-148

Cardinal Laboratories

*=Accredited Analyte

PLEASE NOTE: Liability and Damages. Cardinal's liability and client's exclusive remedy for any claim arising, whether based in contract or tort, shall be limited to the amount paid by client for analyses. All claims, including those for negligence and any other cause whatsoever shall be deemed waived unless made in writing and received by Cardinal within thirty (30) days after completion of the applicable service. In no event shall Cardinal be liable for incidental or consequential damages, including, without limitation, business interruptions, loss of use, or loss of profits incurred by client, its subsidiaries, affiliates or successors arising out of or related to the performance of the services hereunder by Cardinal, regardless of whether such claim is based upon any of the above stated reasons or otherwise. Results relate only to the samples identified above. This report shall not be reproduced except in full with written approval of Cardinal Laboratories.

Celey D. Keene, Lab Director/Quality Manager

PHONE (575) 393-2326 ° 101 E. MARLAND ° HOBBS, NM 88240

Notes and Definitions

QM-07	The spike recovery was outside acceptance limits for the MS and/or MSD. The batch was accepted based on acceptable LCS recovery.
ND	Analyte NOT DETECTED at or above the reporting limit
RPD	Relative Percent Difference
**	Samples not received at proper temperature of 6°C or below.
***	Insufficient time to reach temperature.
-	Chloride by SM4500Cl-B does not require samples be received at or below 6°C Samples reported on an as received basis (wet) unless otherwise noted on report

Cardinal Laboratories

*=Accredited Analyte

PLEASE NOTE: Liability and Damages. Cardinal's liability and client's exclusive remedy for any claim arising, whether based in contract or tort, shall be limited to the amount paid by client for analyses. All claims, including those for negligence and any other cause whatsoever shall be deemed waived unless made in writing and received by Cardinal within thirty (30) days after completion of the applicable service. In no event shall Cardinal be liable for incidental or consequential damages, including, without limitation, business interruptions, loss of use, or loss of profits incurred by client, its subsidiaries, affiliates or successors arising out of or related to the performance of the services hereunder by Cardinal, regardless of whether such claim is based upon any of the above stated reasons or otherwise. Results relate only to the samples identified above. This report shall not be reproduced except in full with written approval of Cardinal Laboratories.

A handwritten signature in black ink, appearing to read "Celey D. Keene".

Celey D. Keene, Lab Director/Quality Manager



PHONE (575) 393-2326 ° 101 E. MARLAND ° HOBBS, NM 88240

September 27, 2023

ANDREW PARKER

AMEREDEV

2901 VIA FORTUNA , SUITE 600

AUSTIN, TX 78746

RE: NE AST COMPOSITE

Enclosed are the results of analyses for samples received by the laboratory on 09/22/23 15:46.

Cardinal Laboratories is accredited through Texas NELAP under certificate number T104704398-22-15. Accreditation applies to drinking water, non-potable water and solid and chemical materials. All accredited analytes are denoted by an asterisk (*). For a complete list of accredited analytes and matrices visit the TCEQ website at www.tceq.texas.gov/field/qa/lab_accred_certif.html.

Cardinal Laboratories is accredited through the State of Colorado Department of Public Health and Environment for:

Method EPA 552.2	Haloacetic Acids (HAA-5)
Method EPA 524.2	Total Trihalomethanes (TTHM)
Method EPA 524.4	Regulated VOCs (V1, V2, V3)

Accreditation applies to public drinking water matrices.

This report meets NELAP requirements and is made up of a cover page, analytical results, and a copy of the original chain-of-custody. If you have any questions concerning this report, please feel free to contact me.

Sincerely,

A handwritten signature in black ink that reads "Celey D. Keene". The signature is written in a cursive, flowing style.

Celey D. Keene

Lab Director/Quality Manager



PHONE (575) 393-2326 • 101 E. MARLAND • HOBBS, NM 88240

Analytical Results For:

AMEREDEV
 ANDREW PARKER
 2901 VIA FORTUNA , SUITE 600
 AUSTIN TX, 78746
 Fax To:

Received: 09/22/2023
 Reported: 09/27/2023
 Project Name: NE AST COMPOSITE
 Project Number: NONE GIVEN
 Project Location: NONE GIVEN

Sampling Date: 09/22/2023
 Sampling Type: Soil
 Sampling Condition: Cool & Intact
 Sample Received By: Dionica Hinojos

Sample ID: NE AST COMPOSITE 0-0.5 FT (H235186-01)

BTEX 8021B		mg/kg		Analyzed By: JH					
Analyte	Result	Reporting Limit	Analyzed	Method Blank	BS	% Recovery	True Value QC	RPD	Qualifier
Benzene*	<0.050	0.050	09/25/2023	ND	1.92	96.1	2.00	3.53	
Toluene*	<0.050	0.050	09/25/2023	ND	2.08	104	2.00	3.02	QR-03
Ethylbenzene*	<0.050	0.050	09/25/2023	ND	2.24	112	2.00	3.23	
Total Xylenes*	<0.150	0.150	09/25/2023	ND	6.69	112	6.00	3.41	QR-03
Total BTEX	<0.300	0.300	09/25/2023	ND					

Surrogate: 4-Bromofluorobenzene (PID) 106 % 71.5-134

Chloride, SM4500Cl-B		mg/kg		Analyzed By: AC					
Analyte	Result	Reporting Limit	Analyzed	Method Blank	BS	% Recovery	True Value QC	RPD	Qualifier
Chloride	80.0	16.0	09/25/2023	ND	432	108	400	0.00	

TPH 8015M		mg/kg		Analyzed By: MS					
Analyte	Result	Reporting Limit	Analyzed	Method Blank	BS	% Recovery	True Value QC	RPD	Qualifier
GRO C6-C10*	<10.0	10.0	09/25/2023	ND	206	103	200	1.43	
DRO >C10-C28*	<10.0	10.0	09/25/2023	ND	214	107	200	4.80	
EXT DRO >C28-C36	<10.0	10.0	09/25/2023	ND					

Surrogate: 1-Chlorooctane 78.4 % 48.2-134

Surrogate: 1-Chlorooctadecane 79.5 % 49.1-148

Cardinal Laboratories

*=Accredited Analyte

PLEASE NOTE: Liability and Damages. Cardinal's liability and client's exclusive remedy for any claim arising, whether based in contract or tort, shall be limited to the amount paid by client for analyses. All claims, including those for negligence and any other cause whatsoever shall be deemed waived unless made in writing and received by Cardinal within thirty (30) days after completion of the applicable service. In no event shall Cardinal be liable for incidental or consequential damages, including, without limitation, business interruptions, loss of use, or loss of profits incurred by client, its subsidiaries, affiliates or successors arising out of or related to the performance of the services hereunder by Cardinal, regardless of whether such claim is based upon any of the above stated reasons or otherwise. Results relate only to the samples identified above. This report shall not be reproduced except in full with written approval of Cardinal Laboratories.

Celey D. Keene, Lab Director/Quality Manager



PHONE (575) 393-2326 • 101 E. MARLAND • HOBBS, NM 88240

Notes and Definitions

QR-03	The RPD value for the sample duplicate or MS/MSD was outside of QC acceptance limits due to matrix interference. QC batch accepted based on LCS and/or LCSD recovery and/or RPD values.
ND	Analyte NOT DETECTED at or above the reporting limit
RPD	Relative Percent Difference
**	Samples not received at proper temperature of 6°C or below.
***	Insufficient time to reach temperature.
-	Chloride by SM4500Cl-B does not require samples be received at or below 6°C Samples reported on an as received basis (wet) unless otherwise noted on report

Cardinal Laboratories

*=Accredited Analyte

PLEASE NOTE: Liability and Damages. Cardinal's liability and client's exclusive remedy for any claim arising, whether based in contract or tort, shall be limited to the amount paid by client for analyses. All claims, including those for negligence and any other cause whatsoever shall be deemed waived unless made in writing and received by Cardinal within thirty (30) days after completion of the applicable service. In no event shall Cardinal be liable for incidental or consequential damages, including, without limitation, business interruptions, loss of use, or loss of profits incurred by client, its subsidiaries, affiliates or successors arising out of or related to the performance of the services hereunder by Cardinal, regardless of whether such claim is based upon any of the above stated reasons or otherwise. Results relate only to the samples identified above. This report shall not be reproduced except in full with written approval of Cardinal Laboratories.

A handwritten signature in black ink, appearing to read "Celey D. Keene".

Celey D. Keene, Lab Director/Quality Manager



101 East Marland, Hobbs, NM 88240
(575) 393-2326 FAX (575) 393-2476

CHAIN-OF-CUSTODY AND ANALYSIS REQUEST

[illegible]



PHONE (575) 393-2326 ° 101 E. MARLAND ° HOBBS, NM 88240

April 01, 2024

ANDREW PARKER

AMEREDEV

2901 VIA FORTUNA , SUITE 600

AUSTIN, TX 78746

RE: NW AST - COMPOSITE SAMPLE

Enclosed are the results of analyses for samples received by the laboratory on 03/25/24 15:08.

Cardinal Laboratories is accredited through Texas NELAP under certificate number T104704398-23-16. Accreditation applies to drinking water, non-potable water and solid and chemical materials. All accredited analytes are denoted by an asterisk (*). For a complete list of accredited analytes and matrices visit the TCEQ website at www.tceq.texas.gov/field/qa/lab_accred_certif.html.

Cardinal Laboratories is accredited through the State of Colorado Department of Public Health and Environment for:

Method EPA 552.2	Haloacetic Acids (HAA-5)
Method EPA 524.2	Total Trihalomethanes (TTHM)
Method EPA 524.4	Regulated VOCs (V1, V2, V3)

Accreditation applies to public drinking water matrices.

This report meets NELAP requirements and is made up of a cover page, analytical results, and a copy of the original chain-of-custody. If you have any questions concerning this report, please feel free to contact me.

Sincerely,

A handwritten signature in black ink that reads "Celey D. Keene". The signature is written in a cursive style with a large, stylized 'C' and 'K'.

Celey D. Keene

Lab Director/Quality Manager



PHONE (575) 393-2326 • 101 E. MARLAND • HOBBS, NM 88240

Analytical Results For:

AMEREDEV
 ANDREW PARKER
 2901 VIA FORTUNA , SUITE 600
 AUSTIN TX, 78746
 Fax To:

Received:	03/25/2024	Sampling Date:	03/25/2024
Reported:	04/01/2024	Sampling Type:	Soil
Project Name:	NW AST - COMPOSITE SAMPLE	Sampling Condition:	Cool & Intact
Project Number:	NONE GIVEN	Sample Received By:	Shalyn Rodriguez
Project Location:	NONE GIVEN		

Sample ID: NW - AST COMPOSITE 0-0.5' (H241552-01)

BTEX 8021B		mg/kg		Analyzed By: JH					
Analyte	Result	Reporting Limit	Analyzed	Method Blank	BS	% Recovery	True Value QC	RPD	Qualifier
Benzene*	<0.050	0.050	03/27/2024	ND	2.17	108	2.00	0.911	
Toluene*	<0.050	0.050	03/27/2024	ND	2.12	106	2.00	0.911	
Ethylbenzene*	<0.050	0.050	03/27/2024	ND	2.06	103	2.00	1.04	
Total Xylenes*	<0.150	0.150	03/27/2024	ND	6.00	99.9	6.00	1.06	
Total BTEX	<0.300	0.300	03/27/2024	ND					

Surrogate: 4-Bromofluorobenzene (PID) 93.1 % 71.5-134

Chloride, SM4500Cl-B		mg/kg		Analyzed By: HM					
Analyte	Result	Reporting Limit	Analyzed	Method Blank	BS	% Recovery	True Value QC	RPD	Qualifier
Chloride	400	16.0	03/27/2024	ND	432	108	400	0.00	

TPH 8015M		mg/kg		Analyzed By: MS					
Analyte	Result	Reporting Limit	Analyzed	Method Blank	BS	% Recovery	True Value QC	RPD	Qualifier
GRO C6-C10*	<10.0	10.0	03/26/2024	ND	209	105	200	0.265	
DRO >C10-C28*	<10.0	10.0	03/26/2024	ND	204	102	200	0.439	
EXT DRO >C28-C36	<10.0	10.0	03/26/2024	ND					

Surrogate: 1-Chlorooctane 122 % 48.2-134

Surrogate: 1-Chlorooctadecane 116 % 49.1-148

Cardinal Laboratories

*=Accredited Analyte

PLEASE NOTE: Liability and Damages. Cardinal's liability and client's exclusive remedy for any claim arising, whether based in contract or tort, shall be limited to the amount paid by client for analyses. All claims, including those for negligence and any other cause whatsoever shall be deemed waived unless made in writing and received by Cardinal within thirty (30) days after completion of the applicable service. In no event shall Cardinal be liable for incidental or consequential damages, including, without limitation, business interruptions, loss of use, or loss of profits incurred by client, its subsidiaries, affiliates or successors arising out of or related to the performance of the services hereunder by Cardinal, regardless of whether such claim is based upon any of the above stated reasons or otherwise. Results relate only to the samples identified above. This report shall not be reproduced except in full with written approval of Cardinal Laboratories.

Celey D. Keene, Lab Director/Quality Manager

PHONE (575) 393-2326 ° 101 E. MARLAND ° HOBBS, NM 88240

Notes and Definitions

ND	Analyte NOT DETECTED at or above the reporting limit
RPD	Relative Percent Difference
**	Samples not received at proper temperature of 6°C or below.
***	Insufficient time to reach temperature.
-	Chloride by SM4500Cl-B does not require samples be received at or below 6°C Samples reported on an as received basis (wet) unless otherwise noted on report

Cardinal Laboratories

*=Accredited Analyte

PLEASE NOTE: Liability and Damages. Cardinal's liability and client's exclusive remedy for any claim arising, whether based in contract or tort, shall be limited to the amount paid by client for analyses. All claims, including those for negligence and any other cause whatsoever shall be deemed waived unless made in writing and received by Cardinal within thirty (30) days after completion of the applicable service. In no event shall Cardinal be liable for incidental or consequential damages, including, without limitation, business interruptions, loss of use, or loss of profits incurred by client, its subsidiaries, affiliates or successors arising out of or related to the performance of the services hereunder by Cardinal, regardless of whether such claim is based upon any of the above stated reasons or otherwise. Results relate only to the samples identified above. This report shall not be reproduced except in full with written approval of Cardinal Laboratories.

A handwritten signature in black ink, appearing to read "Celey D. Keene".

Celey D. Keene, Lab Director/Quality Manager



101 East Marland, Hobbs, NM 88240
(575) 393-2326 FAX (575) 393-2476

CHAIN-OF-CUSTODY AND ANALYSIS REQUEST

Company Name: Amerender LLC Project Manager: Andrew Parker Address: On-File City: State: Zip: Phone #: Fax #: Project #: Project Name: NW AST Composite Sample Project Location: NW AST Composite Sample Sampler Name: Jesus Palomares FOR LAB USE ONLY				BILL TO P.O. #: NW AST Composite Sample Company: Amerender Attn: Andrew Parker Address: City: State: Zip: Phone #: Fax #:				ANALYSIS REQUEST			
Lab I.D. 4941558 NWAST composite 0-0.5ft G-1		Sample I.D.		(G)RAB OR (C)OMP. # CONTAINERS GROUNDWATER WASTEWATER SOIL OIL SLUDGE OTHER : ACID/BASE: ICE / COOL OTHER :		MATRIX PRESERV. SAMPLING		DATE TIME		Chloride TPH (GRO+ DRO+ MRO) BTEX (Benzene)	
Relinquished By: [Signature] Date: 3-25-24 Time: 1:58 Received By: [Signature]		Delivered By: (Circle One) Sampler - UPS - Bus - Other: Corrected Temp. °C: 2-46 Sample Condition: Cool Intact: <input checked="" type="checkbox"/> Yes <input type="checkbox"/> No Intact: <input checked="" type="checkbox"/> Yes <input type="checkbox"/> No CHECKED BY: [Signature]		Observed Temp. °C: 2-46 Corrected Temp. °C: 2-46		Turnaround Time: Standard <input checked="" type="checkbox"/> Rush <input type="checkbox"/> Bacteria (only) Sample Condition: Cool Intact: <input type="checkbox"/> Yes <input type="checkbox"/> No Observed Temp. °C: Corrected Temp. °C:		Verbal Result: <input type="checkbox"/> Yes <input type="checkbox"/> No Add'l Phone #:		REMARKS: Temp Bank: -0.4°C	

† Cardinal cannot accept verbal changes. Please email changes to celey.keene@cardinallabsnm.com

Venegas, Victoria, EMNRD

From: Venegas, Victoria, EMNRD
Sent: Friday, April 26, 2024 2:00 PM
To: Laura Parker
Subject: 1RF-508 - IKE's CONTAINMENT #1 FACILITY ID [fVV2326835427]
Attachments: C-147 1RF-508 - IKE's CONTAINMENT #1 FACILITY ID [fVV2326835427] 04.26.2024.pdf

1RF-508 - IKE's CONTAINMENT #1 FACILITY ID [fVV2326835427]

Good afternoon Ms. Parker.

NMOCD has reviewed the recycling containment closure application and related documents, submitted by [372224] AMEREDEV OPERATING, LLC Application ID 335564, for 1RF-508 - IKE's CONTAINMENT #1 FACILITY ID [fVV2326835427] in Unit Letter D, Section 27, Township 26S, Range 36E, Lea County, New Mexico. [372224] AMEREDEV OPERATING, LLC requested the closure of the following three (3) ASTs, that are part of 1RF-508 - IKE's CONTAINMENT #1 FACILITY ID [fVV2326835427].

The closure request, specific to NW AST, SW AST and NE AST, is approved with the following conditions of approval:

- [372224] AMEREDEV OPERATING, LLC will operate 1RF-508 - IKE'S CONTAINMENT #1 FACILITY ID [FVV2326835427] as originally permitted.
- [372224] AMEREDEV OPERATING, LLC will comply with all conditions previously approved for the 1RF-508 - IKE's CONTAINMENT #1 FACILITY ID [fVV2326835427] permit.
- No changes to the operations procedures, maintenance, monitoring procedures, or closure procedures will be made aside from the requested closure of the above-mentioned ASTs.
- [372224] AMEREDEV OPERATING, LLC will provide OCD with the updated total fluid capacity of 1RF-508 - IKE's CONTAINMENT #1 FACILITY ID [fVV2326835427].

[372224] AMEREDEV OPERATING, LLC will continue to operate, maintain, and close 1RF-508 - IKE's CONTAINMENT #1 FACILITY ID [fVV2326835427] in compliance with 19.15.34 NMAC, to include but not limited detailed inspection records, removal of trash/oil from containment, and monthly C-148 reporting (even if there is zero activity).

Please let me know if you have any additional questions.

Regards,

Victoria Venegas • Environmental Specialist

Environmental Bureau

EMNRD - Oil Conservation Division

506 W. Texas Ave. Artesia, NM 88210

(575) 909-0269 | Victoria.Venegas@emnrd.nm.gov

<https://www.emnrd.nm.gov/oecd/>



District I
1625 N. French Dr., Hobbs, NM 88240
Phone:(575) 393-6161 Fax:(575) 393-0720
District II
811 S. First St., Artesia, NM 88210
Phone:(575) 748-1283 Fax:(575) 748-9720
District III
1000 Rio Brazos Rd., Aztec, NM 87410
Phone:(505) 334-6178 Fax:(505) 334-6170
District IV
1220 S. St Francis Dr., Santa Fe, NM 87505
Phone:(505) 476-3470 Fax:(505) 476-3462

State of New Mexico
Energy, Minerals and Natural Resources
Oil Conservation Division
1220 S. St Francis Dr.
Santa Fe, NM 87505

CONDITIONS

Action 335564

CONDITIONS

Operator: AMEREDEV OPERATING, LLC 2901 Via Fortuna Austin, TX 78746	OGRID: 372224
	Action Number: 335564
	Action Type: [C-147] Water Recycle Long (C-147L)

CONDITIONS

Created By	Condition	Condition Date
vvenegas	[372224] AMEREDEV OPERATING, LLC requested the closure of the following three (3) ASTs, that are part of 1RF-508 - IKE's CONTAINMENT #1 FACILITY ID [VV2326835427]. The closure, specific to NW AST, SW AST and NE AST, is approved.	4/26/2024