



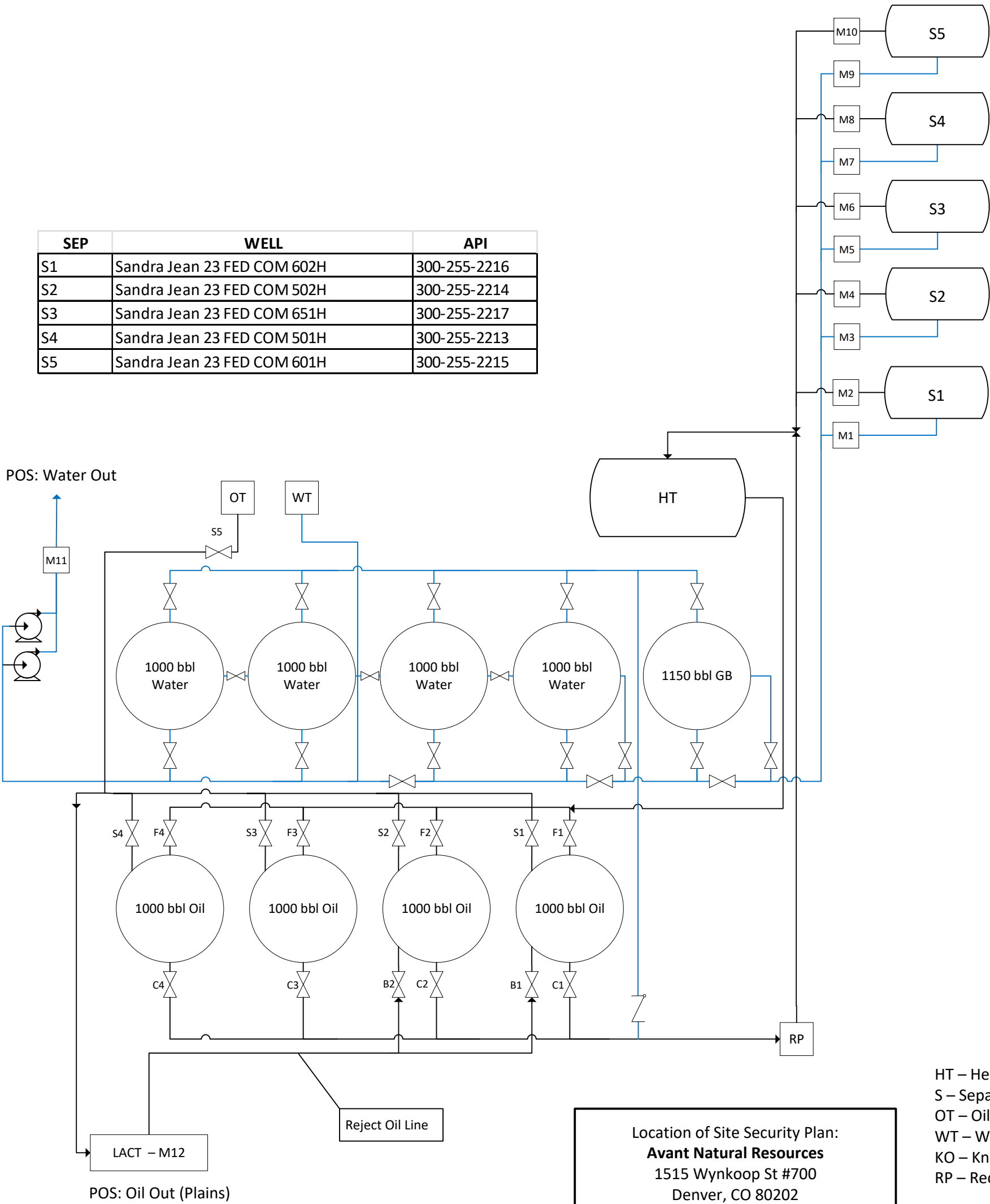
Site Facility Diagram (Oil & Water)

Sandra Jean East CTB
Lat: 32.552066 N Long: 103.6291478 W
Lea County, N.M.

Sec. 23, T20S, R33E



SEP	WELL	API
S1	Sandra Jean 23 FED COM 602H	300-255-2216
S2	Sandra Jean 23 FED COM 502H	300-255-2214
S3	Sandra Jean 23 FED COM 651H	300-255-2217
S4	Sandra Jean 23 FED COM 501H	300-255-2213
S5	Sandra Jean 23 FED COM 601H	300-255-2215



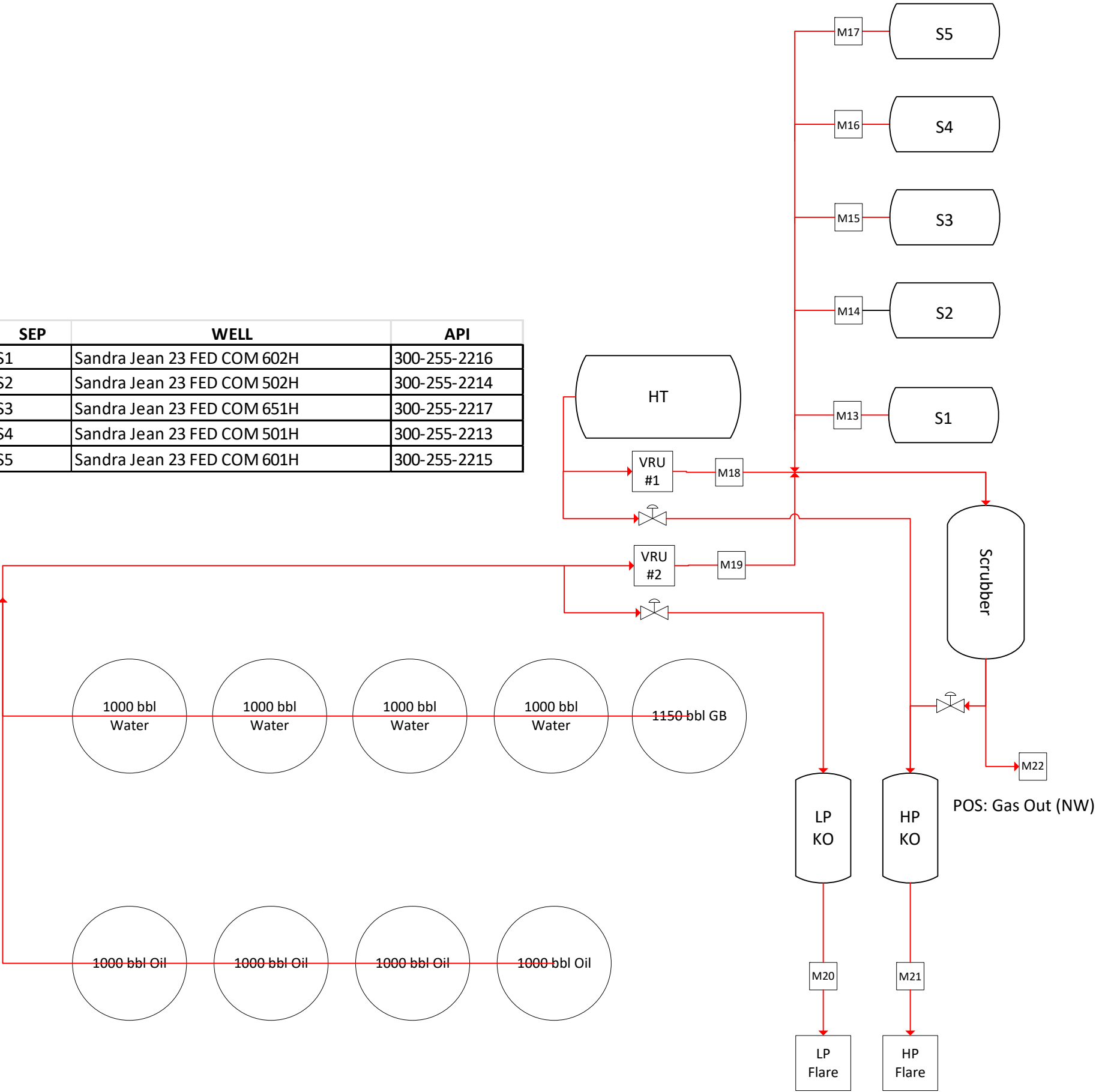


Site Facility Diagram (Oil & Water)

Sandra Jean East CTB
Lat: 32.552066 N Long: 103.6291478 W
Lea County, N.M.



SEP	WELL	API
S1	Sandra Jean 23 FED COM 602H	300-255-2216
S2	Sandra Jean 23 FED COM 502H	300-255-2214
S3	Sandra Jean 23 FED COM 651H	300-255-2217
S4	Sandra Jean 23 FED COM 501H	300-255-2213
S5	Sandra Jean 23 FED COM 601H	300-255-2215



Location of Site Security Plan:
Avant Natural Resources
1515 Wynkoop St #700
Denver, CO 80202

- HT – Heater Treater
- S – Separator
- OT – Oil Truck Load
- WT – Water Truck Load
- KO – Knock Out
- RP – Recycle Pump



Site Facility Diagram (Valves/Meters)

Sandra Jean East CTB
Lat: 32.552066 N Long: 103.6291478 W
Lea County, N.M.

VALVE	PRODUCTION PHASE	SALES PHASE
S1	Closed	Open or Closed
S2	Open	Open
S3	Closed	Open or Closed
S4	Closed	Open or Closed
S5	Closed	Open or Closed
C1	Open or Closed	Closed
C2	Open or Closed	Closed
C3	Open or Closed	Closed
C4	Open or Closed	Closed
F1	Open	Open or Closed
F2	Closed	Closed
F3	Closed	Closed
F4	Closed	Closed
B1	Open	Open
B2	Closed	Closed

Meter	Serial Number	Type
M1	124498-124597-18	Turbine
M2	12201067631	Turbine
M3	122808-123153-05	Turbine
M4	12201067630	Turbine
M5	121311-122643-03	Turbine
M6	12198377427	Turbine
M7	124498-124597-20	Turbine
M8	12201067624	Turbine
M9	121311-122643-12	Turbine
M10	12201067634	Turbine
M11	W303B916000	Mag Meter
M12	W2006C16000	Coriolis
M13	T233940498	Orifice plate
M14	T2322627220	Orifice plate
M15	T2001988427	Orifice plate
M16	T2001988403	Orifice plate
M17	T2001988420	Orifice plate
M18	F22939	Thermal mass
M19	F22937	Thermal mass
M20	F22940	Thermal mass
M21	F22941	Thermal mass
M22	T233536398	Orifice Plate

District I
1625 N. French Dr., Hobbs, NM 88240
Phone:(575) 393-6161 Fax:(575) 393-0720
District II
811 S. First St., Artesia, NM 88210
Phone:(575) 748-1283 Fax:(575) 748-9720
District III
1000 Rio Brazos Rd., Aztec, NM 87410
Phone:(505) 334-6178 Fax:(505) 334-6170
District IV
1220 S. St Francis Dr., Santa Fe, NM 87505
Phone:(505) 476-3470 Fax:(505) 476-3462

State of New Mexico
Energy, Minerals and Natural Resources
Oil Conservation Division
1220 S. St Francis Dr.
Santa Fe, NM 87505

QUESTIONS

Action 345914

QUESTIONS

Operator: Avant Operating, LLC 1515 Wynkoop Street Denver, CO 80202	OGRID: 330396
	Action Number: 345914
	Action Type: [UF-FAC] TB Registration (TB-REG)

QUESTIONS

Facility Details <i>Please answer all the questions in this group.</i>	
Name of the facility	Sandra Jean East CTB
Date the facility was opened	04/24/2024
Depth to ground water, if known	Not answered.

Verification	
Does the operator have other facilities with a matching name	No
Are there other facilites located within approximately 50 feet	No

District I
1625 N. French Dr., Hobbs, NM 88240
Phone:(575) 393-6161 Fax:(575) 393-0720
District II
811 S. First St., Artesia, NM 88210
Phone:(575) 748-1283 Fax:(575) 748-9720
District III
1000 Rio Brazos Rd., Aztec, NM 87410
Phone:(505) 334-6178 Fax:(505) 334-6170
District IV
1220 S. St Francis Dr., Santa Fe, NM 87505
Phone:(505) 476-3470 Fax:(505) 476-3462

State of New Mexico
Energy, Minerals and Natural Resources
Oil Conservation Division
1220 S. St Francis Dr.
Santa Fe, NM 87505

ACKNOWLEDGMENTS

Action 345914

ACKNOWLEDGMENTS

Operator: Avant Operating, LLC 1515 Wynkoop Street Denver, CO 80202	OGRID: 330396
	Action Number: 345914
	Action Type: [UF-FAC] TB Registration (TB-REG)

ACKNOWLEDGMENTS

<input checked="" type="checkbox"/>	I certify that I am authorized to register a facility on behalf of the responsible operator.
<input checked="" type="checkbox"/>	I certify that I will notify OCD of any changes of ownership for this facility.
<input checked="" type="checkbox"/>	I certify that I will notify OCD when this facility is closed.