

SPCC Plan

Eddy County, New Mexico

MR NM Operating LLC

---

## SPILL PREVENTION, CONTROL, AND COUNTERMEASURE PLAN

SITE NAME: Phoenix CTB

OWNER/OPERATOR RESPONSIBLE: MR NM Operating LLC  
5950 Berkshire Lane Suite 1000  
Dallas, TX 75225  
(469) 899-8600

### MANAGEMENT REVIEW AND APPROVAL:

This Spill Prevention, Control, and Countermeasure (SPCC) Plan will be implemented as herein described. In addition, necessary manpower, equipment, and materials required to expeditiously control and remove any quantity of oil discharged is hereby committed.

Designated person accountable for oil spill prevention at the facilities:

Signature: *Chance Scarborough*

Name: Chance Scarborough

Date: 9/20/2023

Title: Field Operations Manager



September 2023

1

SPCC Plan

Eddy County, New Mexico

MR NM Operating LLC

SITE NAME: Phoenix CTB

**PROFESSIONAL ENGINEER CERTIFICATION**

By means of this Professional Engineer Certification, I hereby attest to the following:

- I am familiar with the requirements of 40 CFR Part 112 and have verified that this SPCC Plan has been prepared in accordance with the requirements of this Part.
- I or my agent have visited and examined the facility listed above.
- I have verified that this SPCC Plan has been prepared in accordance with good engineering practice, including consideration of applicable industry standards.
- I have verified that the required inspection and testing procedures have been established as herein described in Volume I Section 9.0 and Volume II Section 3.5.
- I have verified that the technical content included in this SPCC Plan is adequate for the facility with the exceptions presented below:
  - Confirm that the diesel tank is double-walled or provide sized secondary containment.



Allison White

Printed Name of Registered Professional Engineer

A handwritten signature in blue ink that reads "Allison S White".  
Signature of Registered Professional EngineerDate 9/14/23 Registration No. 25204 State New Mexico

SPCC Plan

Eddy County, New Mexico  
MR NM Operating LLC

SITE NAME: Phoenix CTB

**CERTIFICATION OF THE APPLICABILITY OF THE SUBSTANTIAL HARM CRITERIA [40 CFR 112, Appendix C]**

Does the facility transfer oil over water to or from vessels *and* does the facility have a total oil storage capacity greater than or equal to 42,000 gallons?

NO

Does the facility have a total oil storage capacity greater than or equal to 1 million gallons *and* does the facility lack secondary containment that is sufficiently large to contain the capacity of the largest aboveground oil storage tank plus sufficient freeboard to allow for precipitation within any aboveground oil storage tank area?

NO

Does the facility have a total oil storage capacity greater than or equal to 1 million gallons *and* is the facility located at a distance (as calculated using the appropriate formula in Attachment C-III to this appendix or a comparable formula<sup>1</sup>) such that a discharge from the facility could cause injury to fish and wildlife and sensitive environments? For further description of fish and wildlife and sensitive environments, see Appendices I, II, and III to DOC/NOAA's "Guidance for Facility and Vessel Response Plans: Fish and Wildlife and Sensitive Environments" (59 FR 14713, March 29, 1994) and the applicable Area Contingency Plan.

NO

Does the facility have a total oil storage capacity greater than or equal to 1 million gallons *and* is the facility located at a distance (as calculated using the appropriate formula in Attachment C-III to this appendix or a comparable formula<sup>1</sup>) such that a discharge from the facility would shut down a public drinking water intake<sup>2</sup>?

NO

Does the facility have a total oil storage capacity greater than or equal to 1 million gallons *and* has the facility experienced a reportable oil spill in an amount greater than or equal to 10,000 gallons within the last 5 years?

NO**CERTIFICATION**

I certify under penalty of law that I have personally examined and am familiar with the information submitted in this document, and that based on my inquiry of those individuals responsible for obtaining this information, I believe that the submitted information is true, accurate, and complete.

\_\_\_\_\_  
Signature\_\_\_\_\_  
Chance Scarborough

Name (please type or print)

\_\_\_\_\_  
Field Operations Manager

Title

\_\_\_\_\_  
Date

September 2023

3

SPCC Plan

Eddy County, New Mexico

MR NM Operating LLC

SITE NAME: Phoenix CTB

**SITE INFORMATION**

Inspection Date	County	State	Pad Direction of Runoff Flow	Nearest Watercourse Name	Direction	Distance (miles)
8/16/2023	Eddy	NM	W	Unnamed Pond	SE	1.17

**TANK INFORMATION AND CONTAINMENT CALCULATIONS**

Tank Information							
Berm Number	Type	No of Tanks	Construction	Contents	Diameter (feet)	Tank Height (feet)	Tank Volume (bbl)
1	Storage Tank	3	Steel	Oil	15.5	16	500
1	Storage Tank	3	Steel	Produced Water	15.5	16	500
General	Storage Tank	1	Steel	Diesel			36
General	Heater Treater	1	Steel	Oil/Water	6	20	100
General	Separator	2	Steel	Oil/Water	4	15	34
General	Separator	1	Steel	Oil/Water	4	10	22

Secondary Containment										
Berm Number	Material	Shape	Length (feet)	Width (feet)	Height (feet)	Empty Capacity (bbl)	Displacement (bbl)	Precipitation Volume (bbl)	Available Containment (bbl)	Containment Sufficient?
1	Metal	Rectangle	150.00	55.00	3.25	4775	546	502	3727	Y

**Notes:**

bbl - barrels

See Professional Engineer Certification for required corrective action where berm capacity is not sufficient.

Displacement volume is equal to the volume of all tanks (below the top of the berm) within the containment, not including the single largest container.

Precipitation volume is based upon the published 25-year, 24-hour storm for the county in which the site is located, captured within the calculated area of the berm.

Containment is sufficient if Empty Capacity - Displacement - Precipitation volume  $\geq$  above ground volume of the largest tank in the berm.

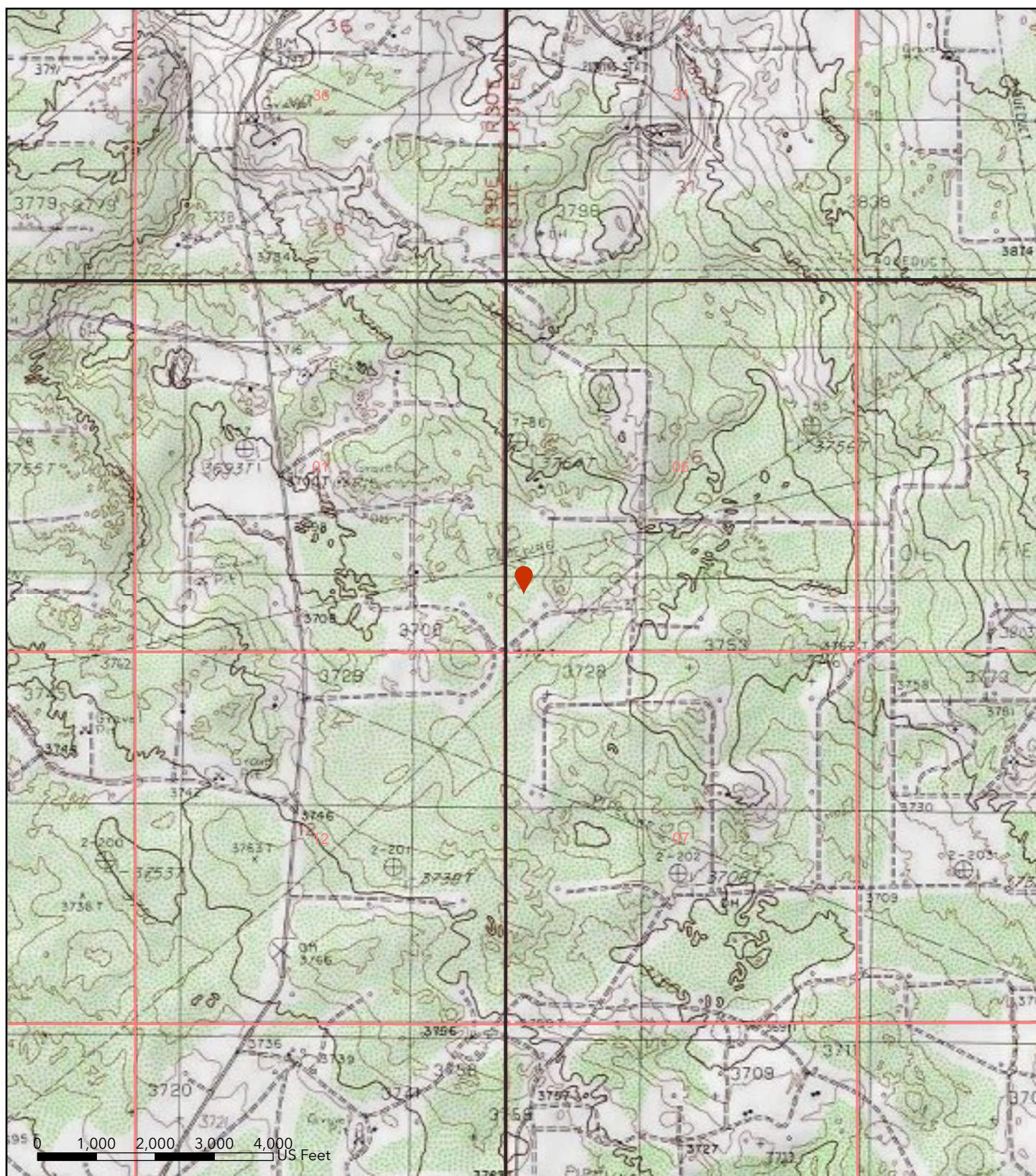
For SPCC applicable equipment outside of the bulk storage tank containment, which includes oil-filled operational equipment and flow-through process vessels, GENERAL CONTAINMENT is provided through modified site grading and/or site perimeter containment measures. In addition to general containment and inspections, an Oil Spill Contingency Plan is provided with a written inspection and monitoring program.

September 2023

4







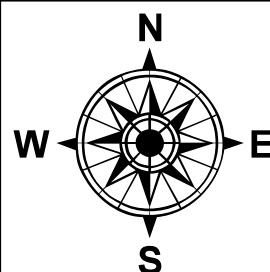
### Figure 1 Site Location Map

Phoenix CTB  
Eddy County, NM



Facility

Basemap: USGS Topo Map  
Quad: Loco Hills

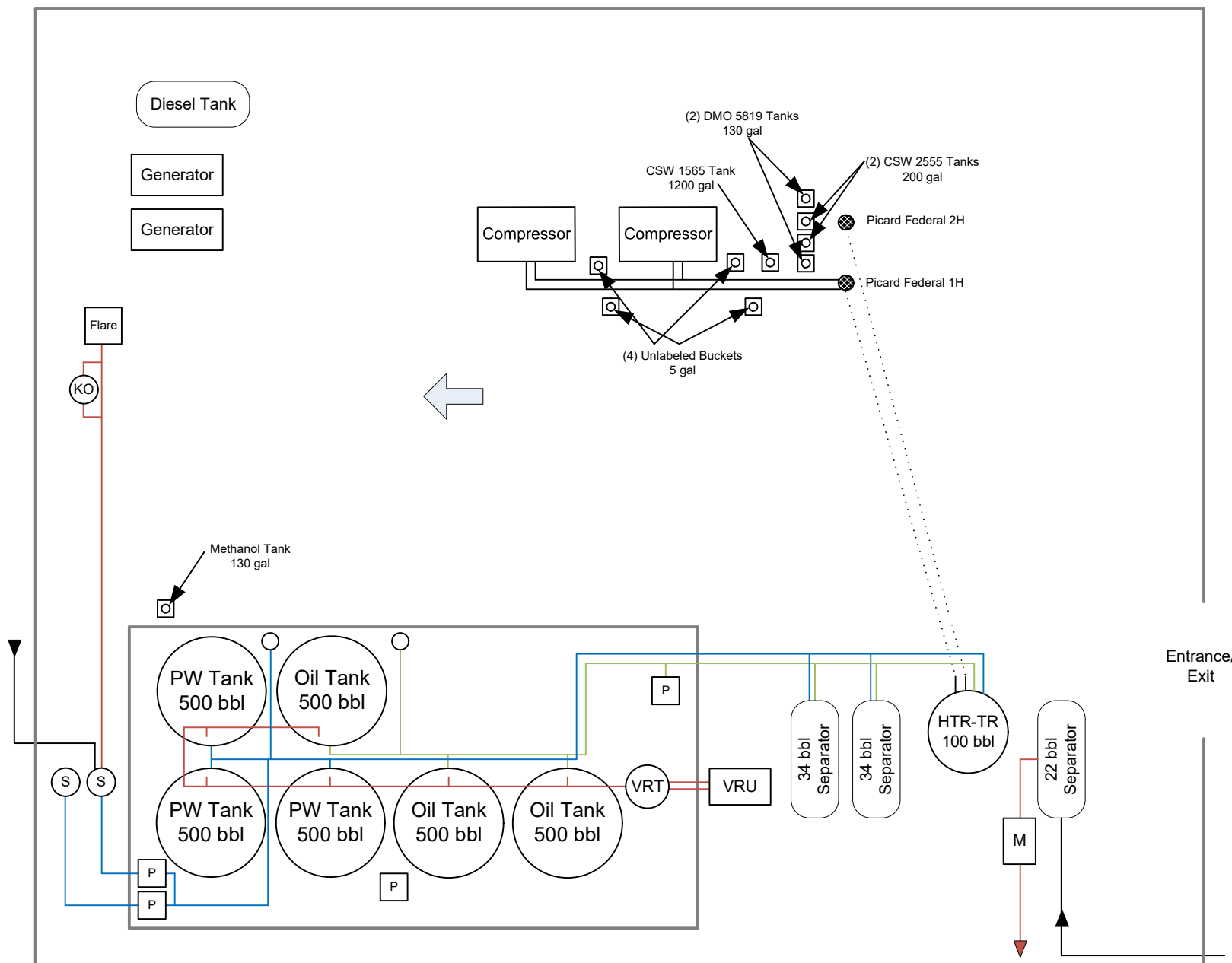


Thornton, CO  
720.431.7468  
[www.CDHconsult.com](http://www.CDHconsult.com)



**LEGEND**

	BERM
	ABOVEGROUND PIPING
	UNDERGROUND PIPING
	GAS PIPING
	OIL PIPING
	PRODUCED WATER PIPING
	PROCESS FLOW DIRECTION
	DIRECTION OF FLOW
PW	PRODUCED WATER
M	METER
bbl	BARREL(S)
gal	GALLON(S)
	WELLHEAD
	DRIP PAN
	CHEMICAL IN CONTAINMENT
P	PUMP
S	SCRUBBER
KO	KNOCK OUT TANK



**FACILITY DIAGRAM**  
PHOENIX CTB  
MR NM Operating, LLC



**District I**  
1625 N. French Dr., Hobbs, NM 88240  
Phone:(575) 393-6161 Fax:(575) 393-0720  
**District II**  
811 S. First St., Artesia, NM 88210  
Phone:(575) 748-1283 Fax:(575) 748-9720  
**District III**  
1000 Rio Brazos Rd., Aztec, NM 87410  
Phone:(505) 334-6178 Fax:(505) 334-6170  
**District IV**  
1220 S. St Francis Dr., Santa Fe, NM 87505  
Phone:(505) 476-3470 Fax:(505) 476-3462

State of New Mexico  
Energy, Minerals and Natural Resources  
Oil Conservation Division  
1220 S. St Francis Dr.  
Santa Fe, NM 87505

QUESTIONS  
  
Action 346621

QUESTIONS

Operator:  MACK ENERGY CORP P.O. Box 960 Artesia, NM 882110960	OGRID:  13837
	Action Number:  346621
	Action Type:  [UF-FAC] TB Registration (TB-REG)

QUESTIONS

<b>Facility Details</b>	
Please answer all the questions in this group.	
Name of the facility	Phoenix CTB
Date the facility was opened	07/01/2022
Depth to ground water, if known	Not answered.
<b>Verification</b>	
Does the operator have other facilities with a matching name	No
Are there other facilites located within approximately 50 feet	No

**District I**  
1625 N. French Dr., Hobbs, NM 88240  
Phone:(575) 393-6161 Fax:(575) 393-0720  
**District II**  
811 S. First St., Artesia, NM 88210  
Phone:(575) 748-1283 Fax:(575) 748-9720  
**District III**  
1000 Rio Brazos Rd., Aztec, NM 87410  
Phone:(505) 334-6178 Fax:(505) 334-6170  
**District IV**  
1220 S. St Francis Dr., Santa Fe, NM 87505  
Phone:(505) 476-3470 Fax:(505) 476-3462

**State of New Mexico**  
**Energy, Minerals and Natural Resources**  
**Oil Conservation Division**  
**1220 S. St Francis Dr.**  
**Santa Fe, NM 87505**

ACKNOWLEDGMENTS  
  
Action 346621

ACKNOWLEDGMENTS

Operator:  MACK ENERGY CORP P.O. Box 960 Artesia, NM 882110960	OGRID:  13837
	Action Number:  346621
	Action Type: [UF-FAC] TB Registration (TB-REG)

ACKNOWLEDGMENTS

<input checked="" type="checkbox"/>	I certify that I am authorized to register a facility on behalf of the responsible operator.
<input checked="" type="checkbox"/>	I certify that I will notify OCD of any changes of ownership for this facility.
<input checked="" type="checkbox"/>	I certify that I will notify OCD when this facility is closed.